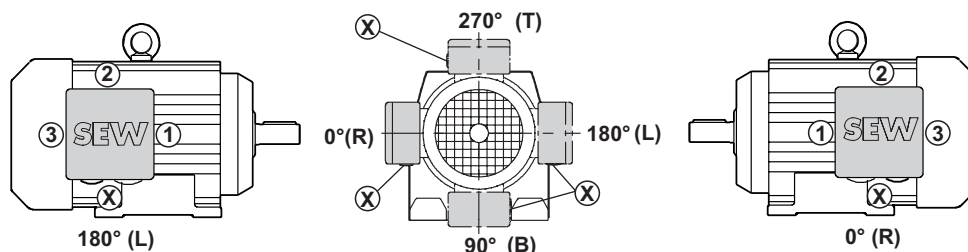




13 Mounting Positions and Dimension Sheets of AC Motors

13.1 Mounting position designations for AC motors

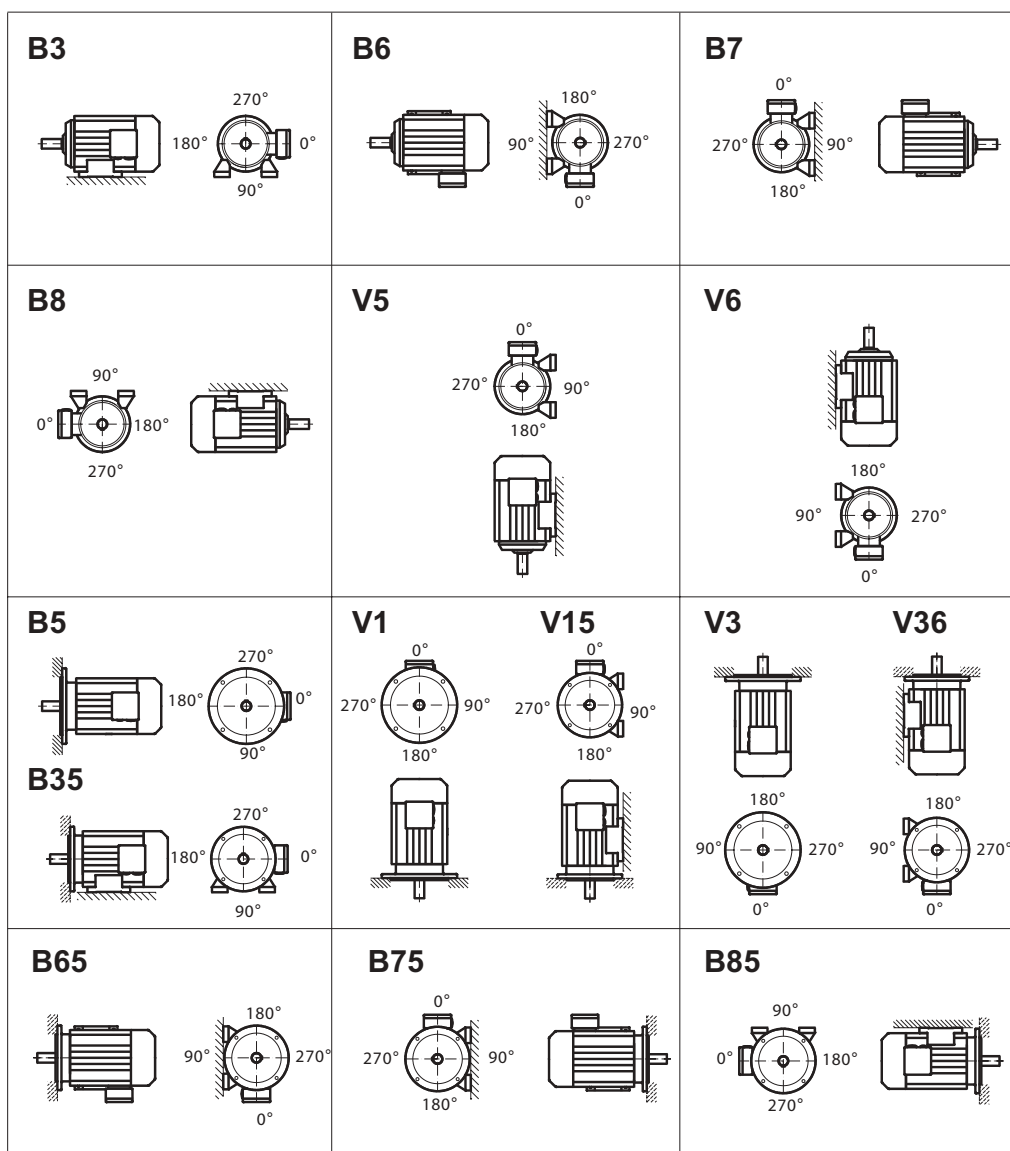
Position of motor terminal box and cable entry



51302AXX

Figure 46: Position of terminal box and cable entry

Mounting
positions



04375AXX

Figure 47: Mounting positions for AC motors

**13.2 Dimension sheet notes for AC motors**

Please observe the following points regarding dimension sheets for AC motors (DT/DV):

- The foot dimensions of DT90, DV180 and DV225 motors differ from IEC dimensions.
- Fan guards of DT71.., DT90.., DV132M and DV160L foot-mounted motors are flat-topped.
- Manual brake release can be pivoted through 90° together with the terminal box, with the exception of DT71.., DT90.., DV132M and DV160L foot-mounted motors.
- With brake motors, please leave adequate room (= diameter of the fan guard) for removing the fan guard.
- DT71.., DT90.., DV132M and DV160L foot-mounted motors with a built-on encoder are not available with a flat-topped fan guard and must be supported if necessary.
- Motors from size DV112.. and up are equipped with lifting eyebolts. The lifting eyebolts can be unscrewed.
- Leave a clearance of about half the fan guard diameter to allow for unhindered air inflow.

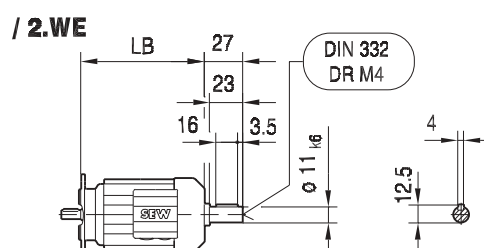
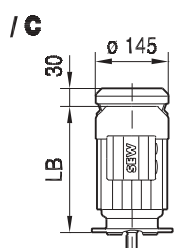
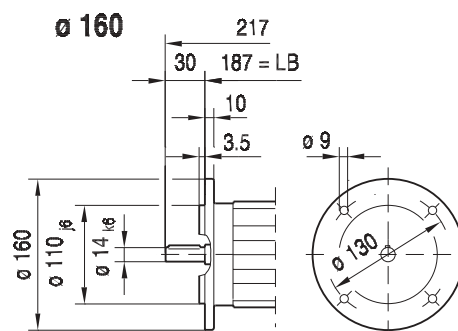
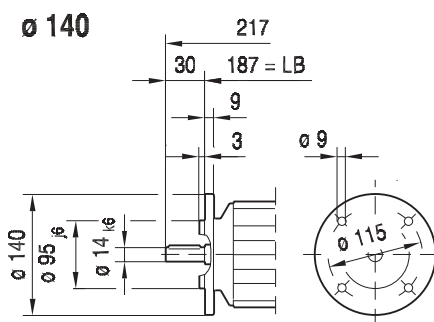
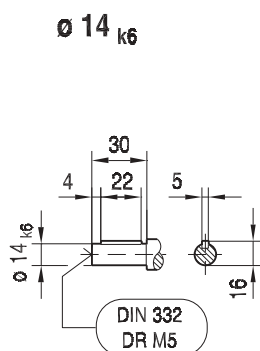
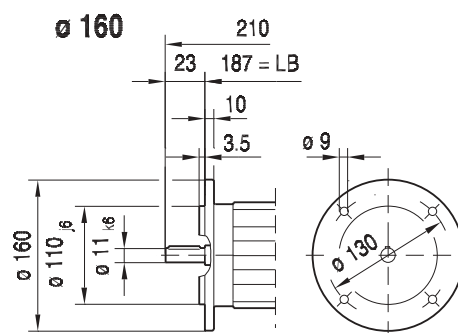
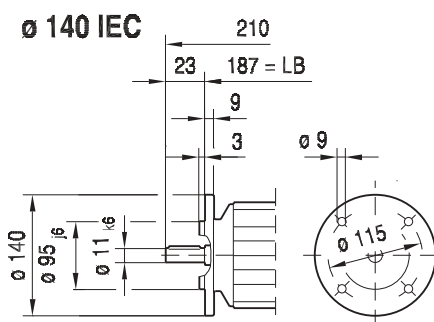
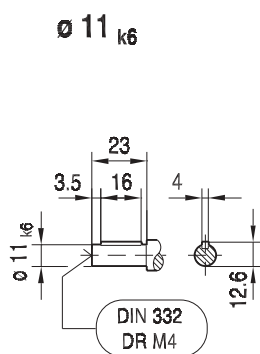
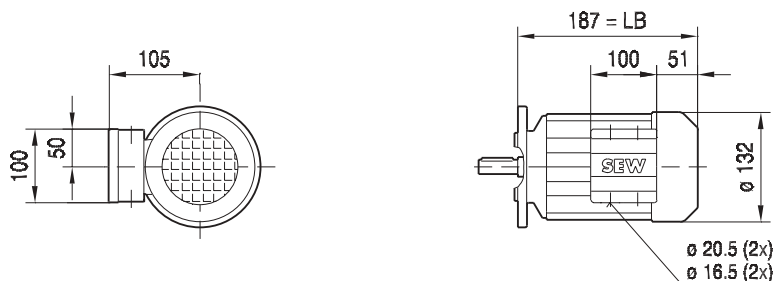




13.3 (e)DT/DV.. [mm]

DFR63

08 182 01 02
1 (2)

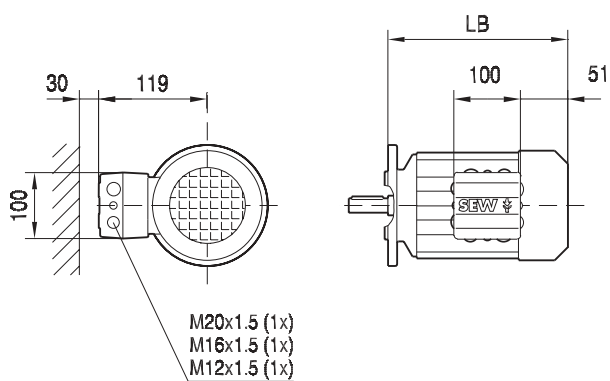




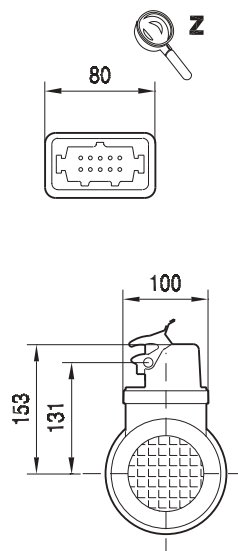
DFR63

08 182 01 02
2 (2)

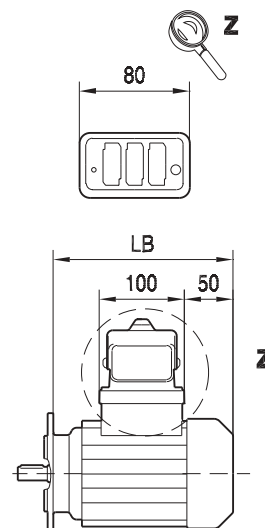
/ IS



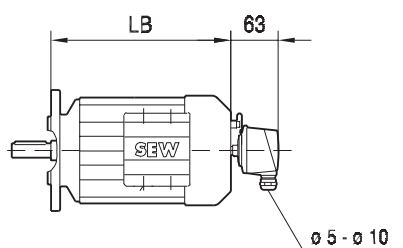
/ ASD.



/ AMD.



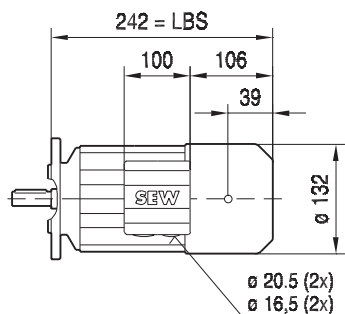
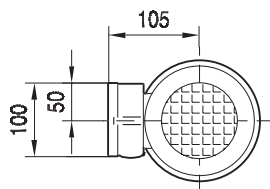
/ EH1



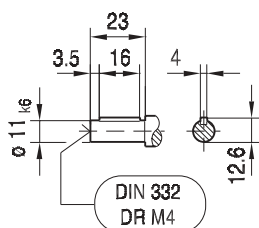


DFR63 / BR03

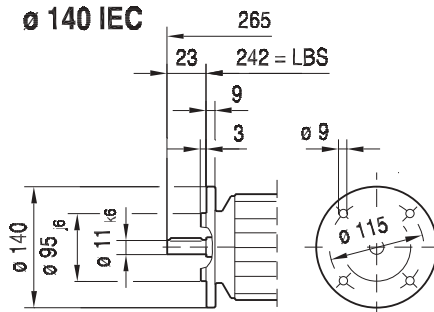
09 037 01 02
1 (2)



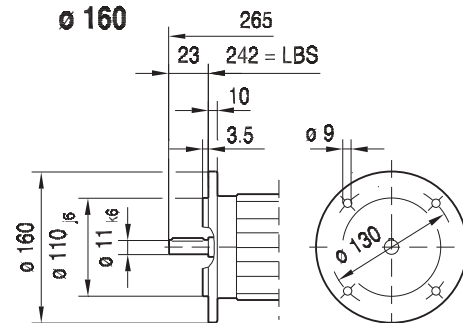
Ø 11_{k6}



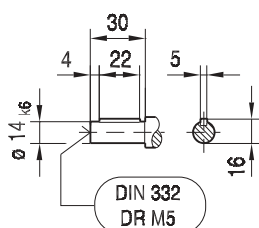
Ø 140 IEC



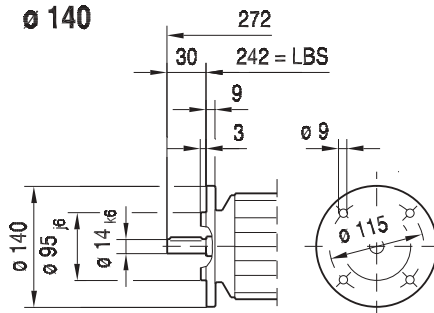
Ø 160



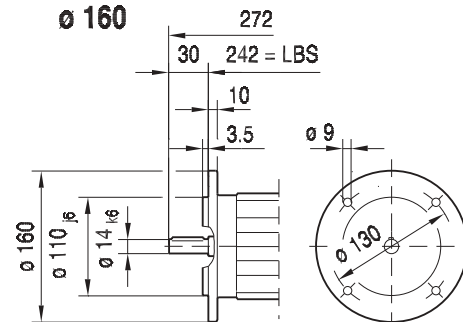
Ø 14_{k6}



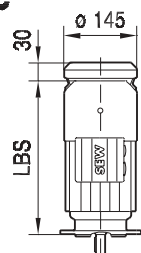
Ø 140



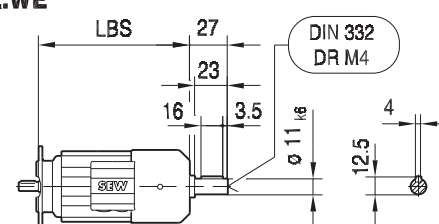
Ø 160



/C



/ 2.WE

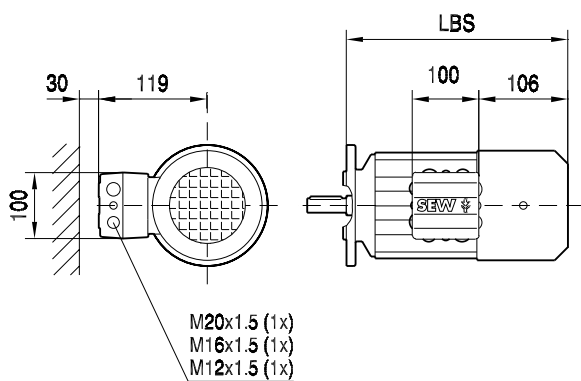




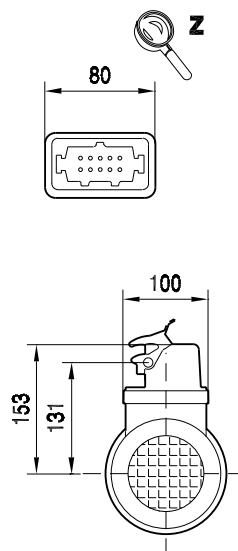
DFR63 / BR03

09 037 01 02
2 (2)

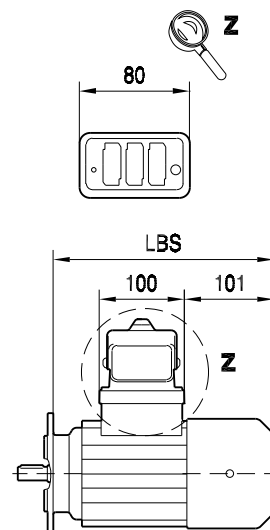
/ IS



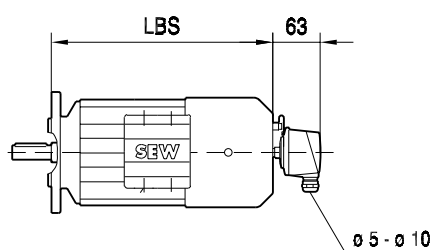
/ ASD.



/ AMD.



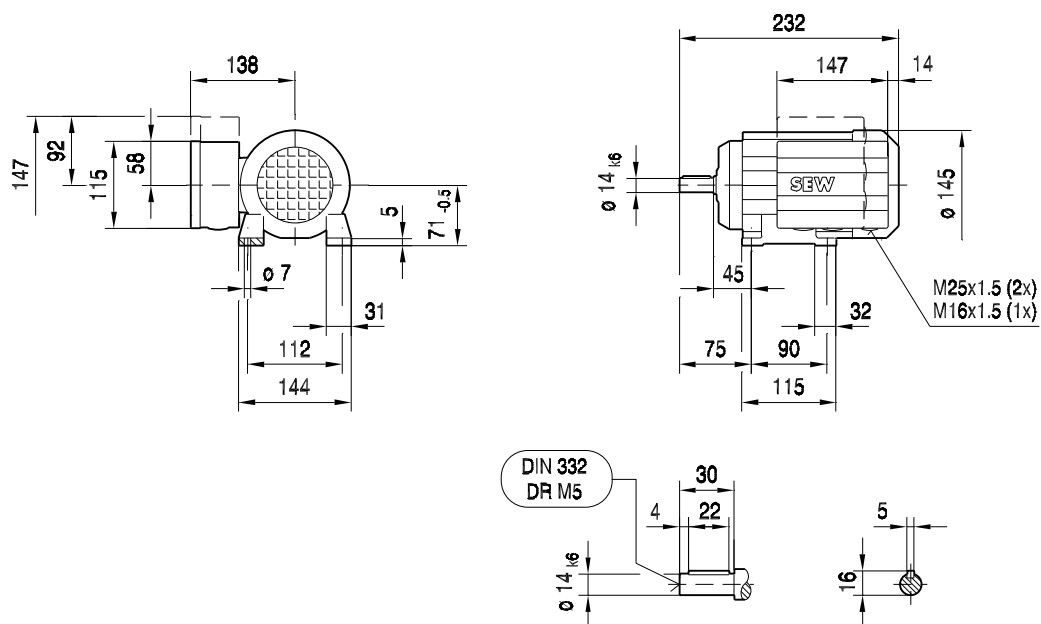
/ EH1



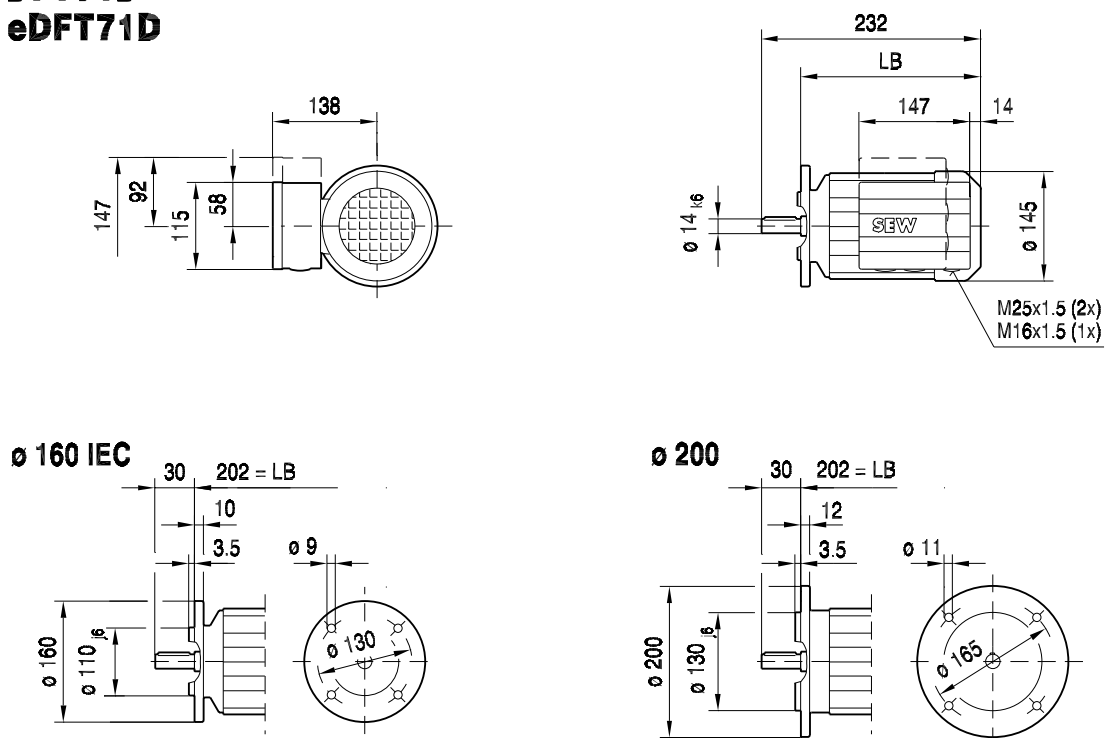


DT71D eDT71D

08 207 002
1 (2)



DFT71D eDFT71D

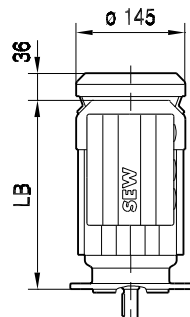




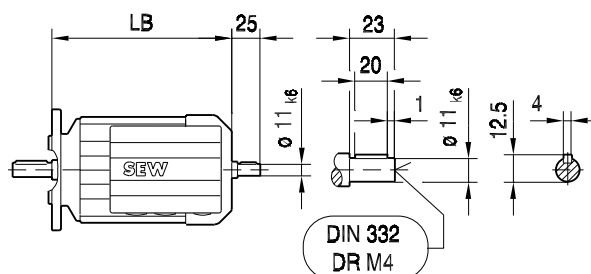
D(F)T71D

08 207 002
2 (2)

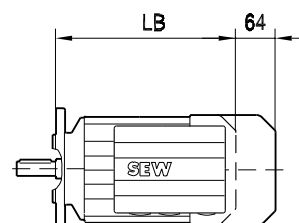
/ C



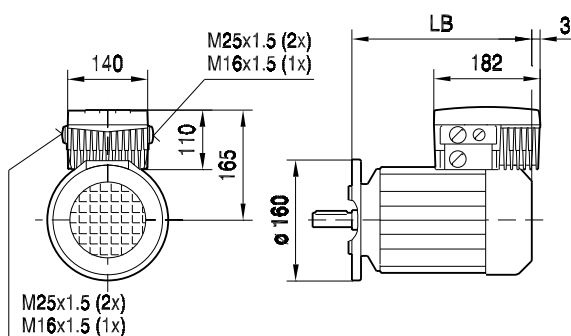
/ 2.WE



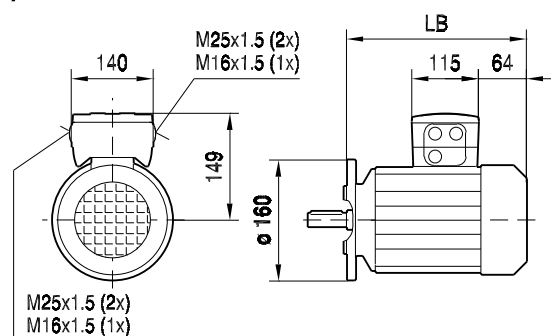
/ RS



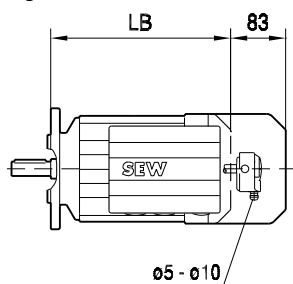
/ MM..



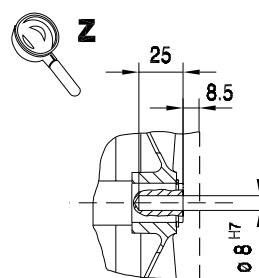
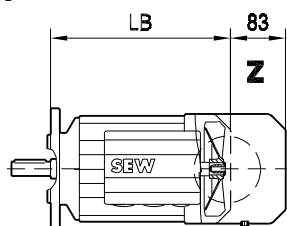
/ MSW



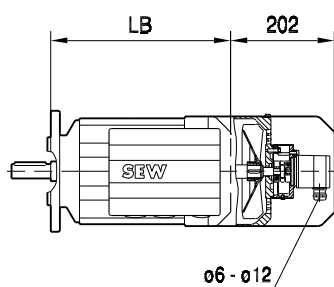
/ ES1.



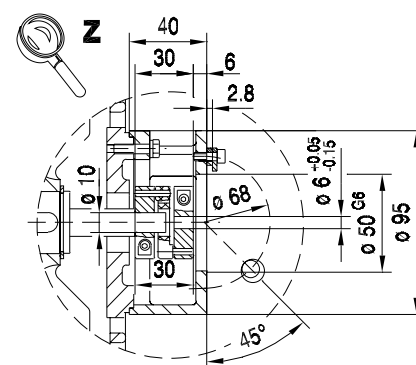
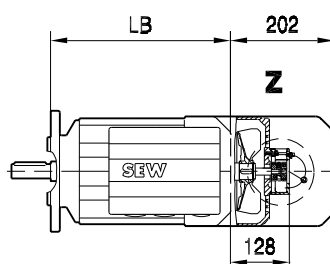
/ ES1A



/ EV1.



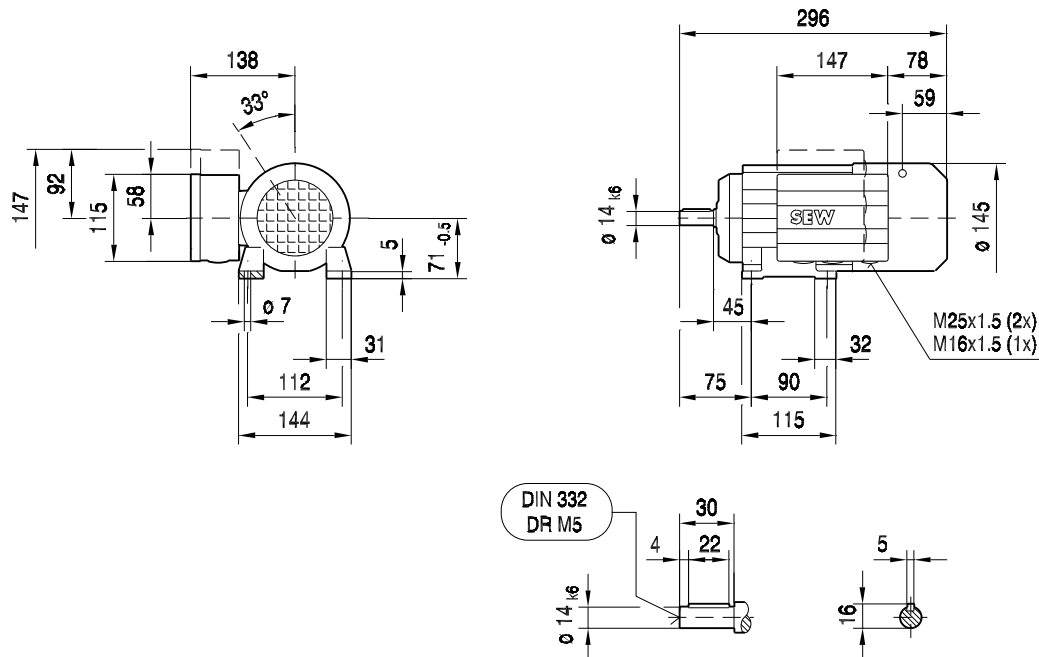
/ EV1A



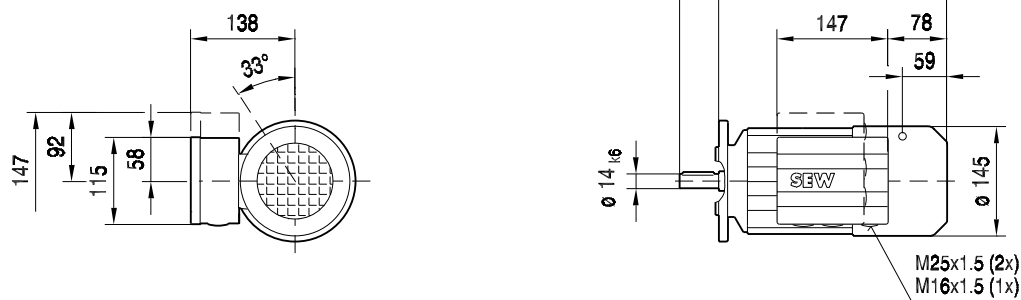


DT71D / BMG

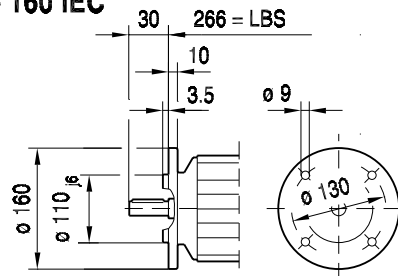
09 055 002
1 (2)



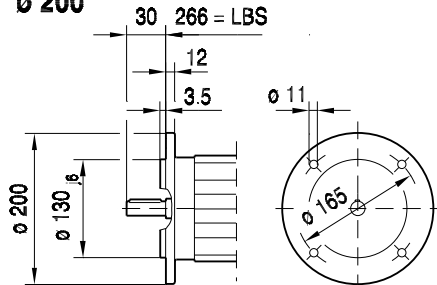
DFT71D / BMG



$\phi 160$ IEC



$\phi 200$

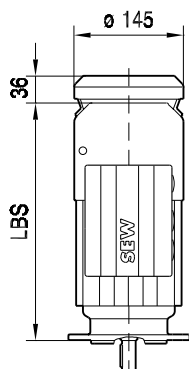




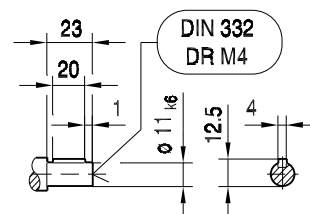
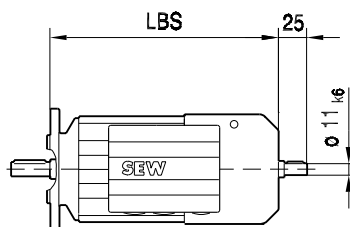
D(F)T71D / BMG

09 055 002
2 (2)

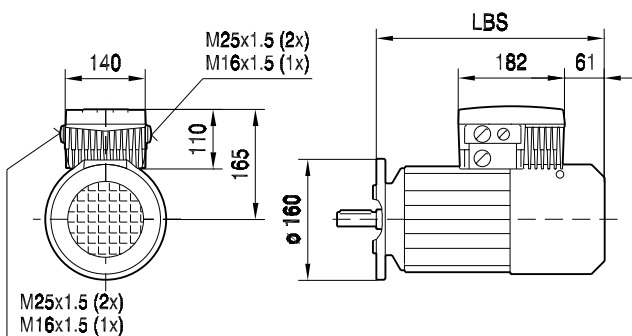
/ C



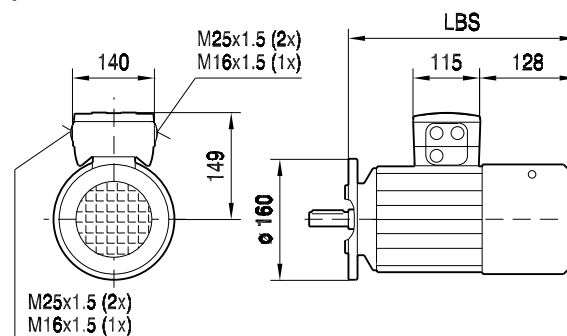
/ 2.WE



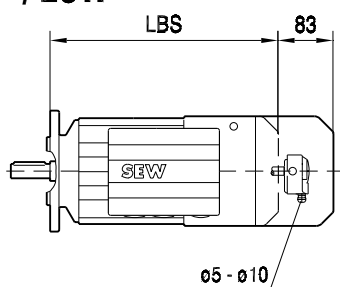
/ MM..



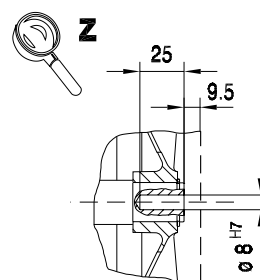
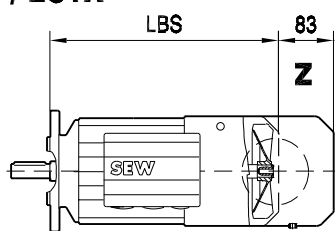
/ MSW



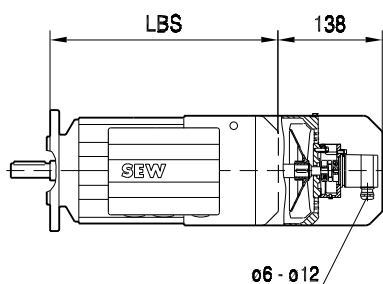
/ ES1.



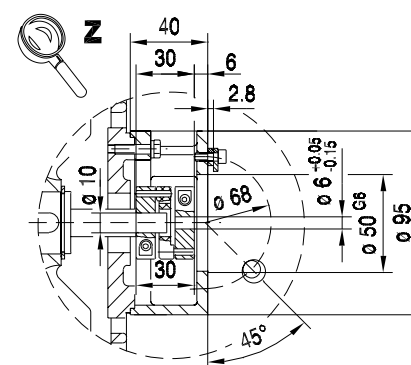
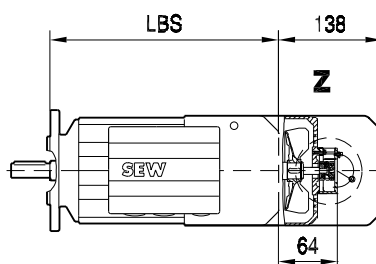
/ ES1A



/ EV1.



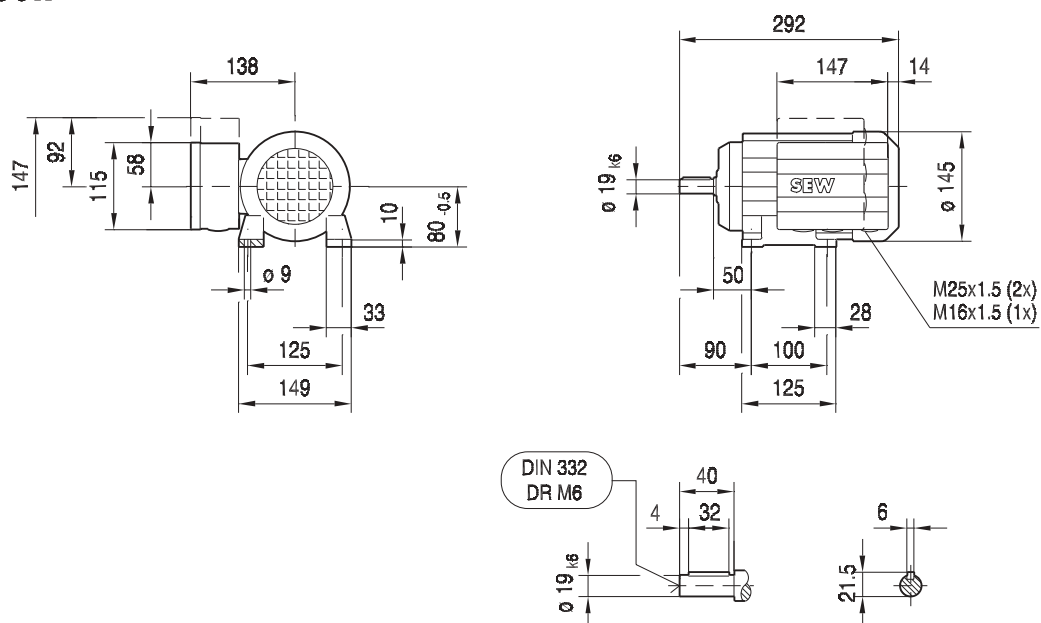
/ EV1A



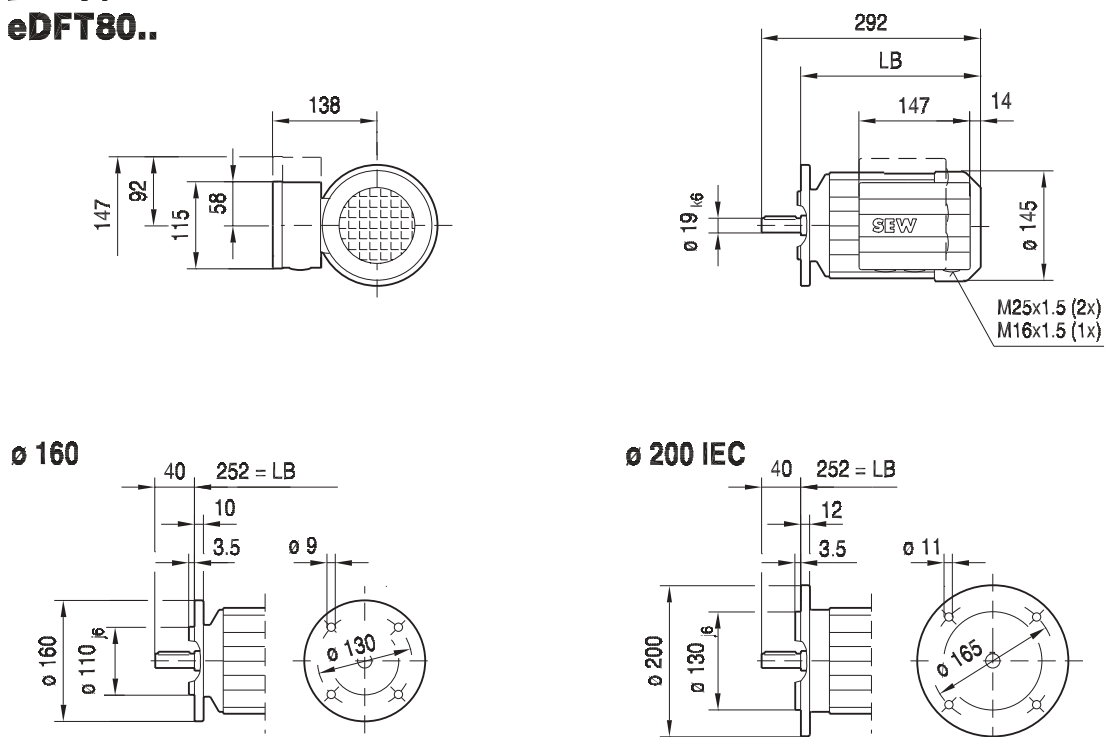


DT80.. eDT80..

08 208 002
1 (2)



DFT80.. eDFT80..

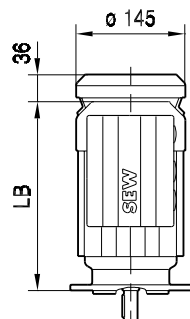




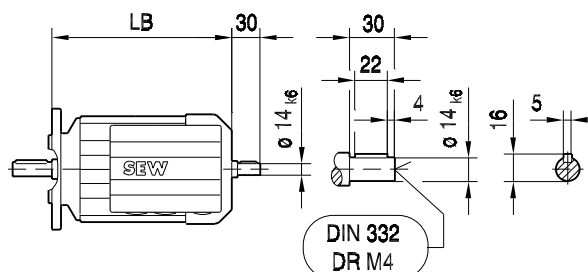
D(F)T80..

08 208 002
2 (2)

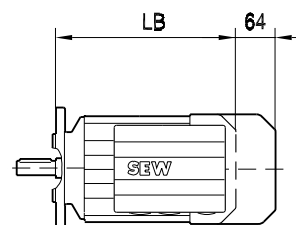
/ C



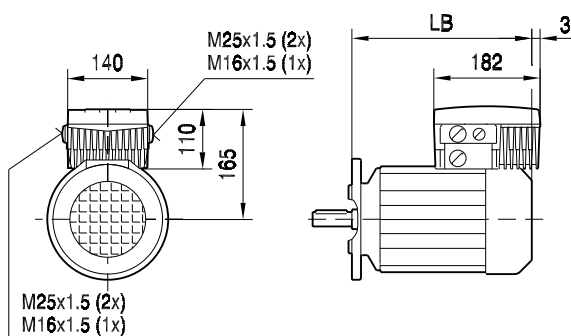
/ 2.WE



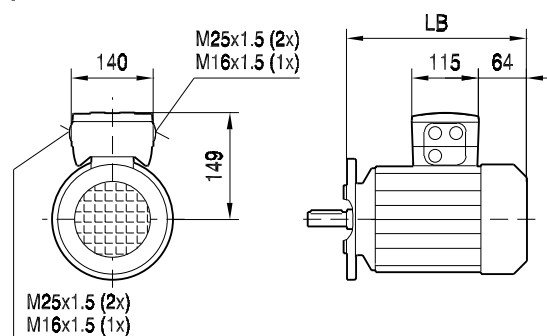
/ RS



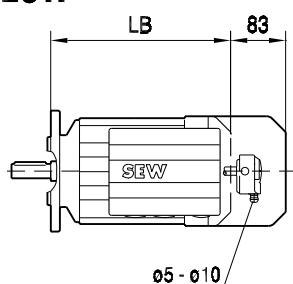
/ MM..



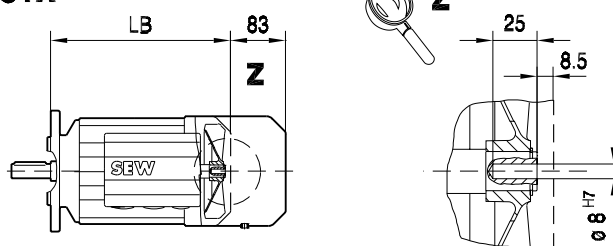
/ MSW



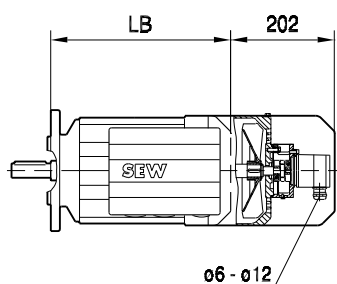
/ ES1.



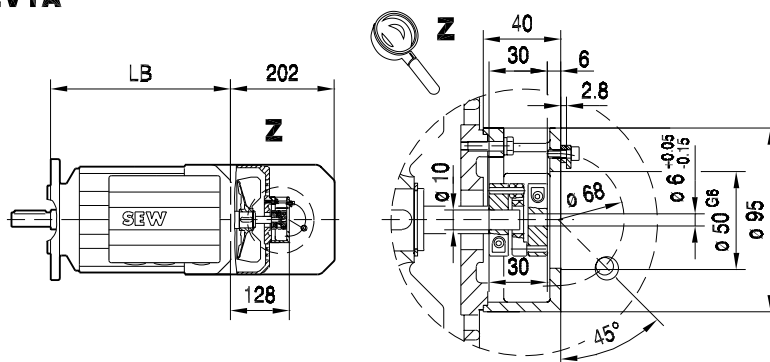
/ ES1A



/ EV1.



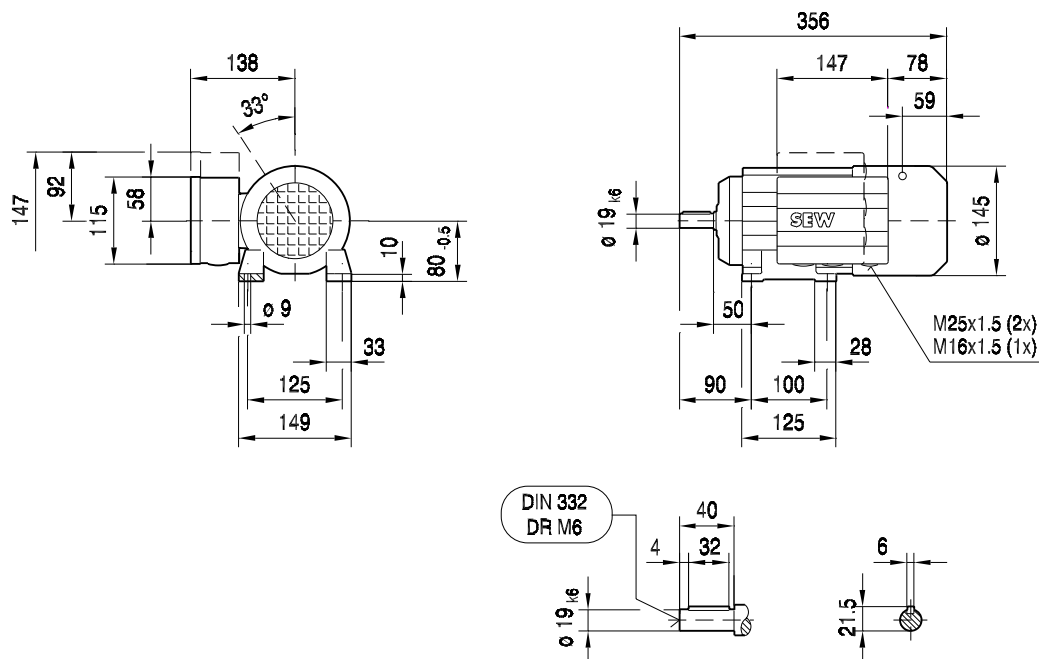
/ EV1A



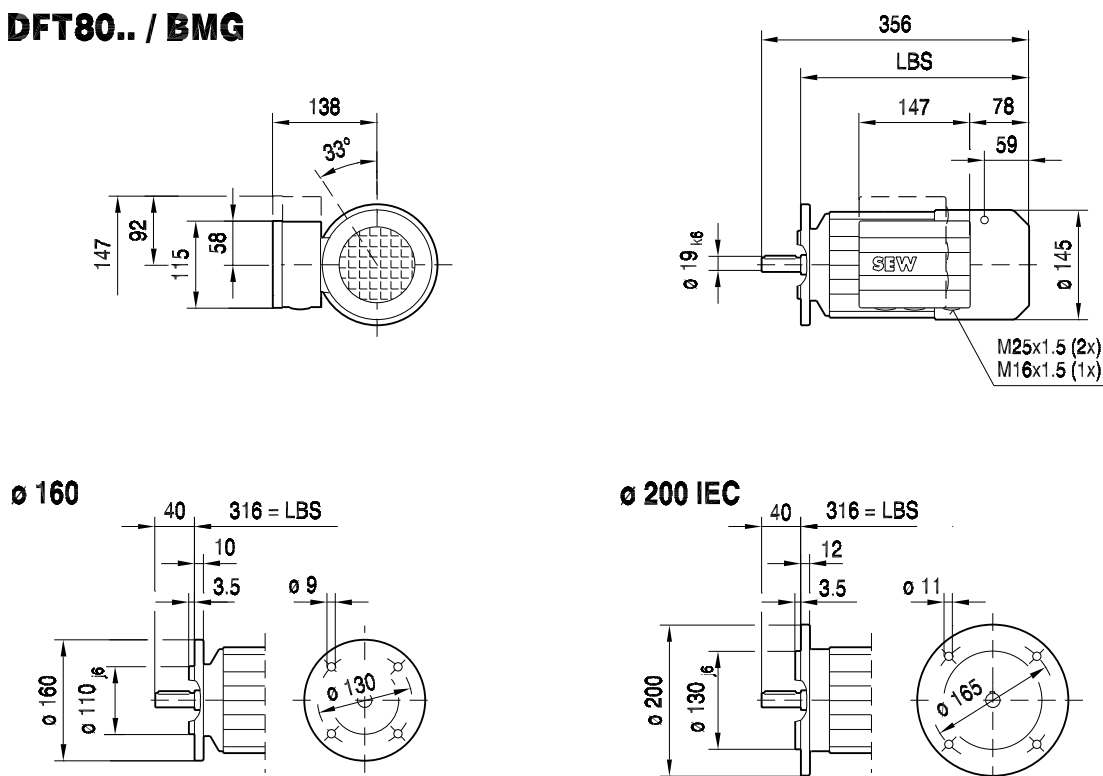


DT80.. / BMG

09 056 002
1 (2)



DFT80.. / BMG

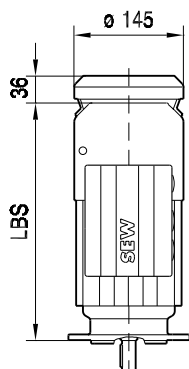




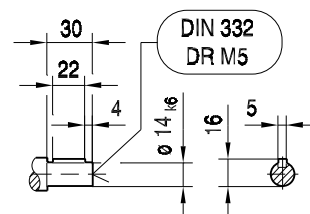
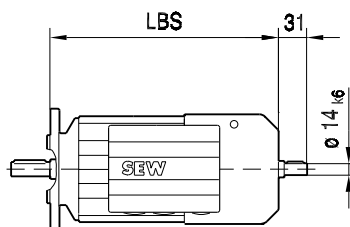
D(F)T80.. / BMG

09 056 002
2 (2)

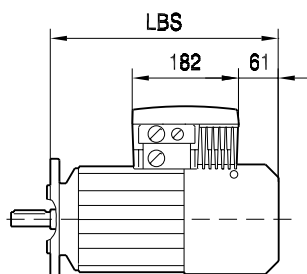
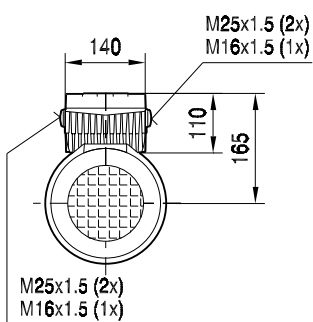
/ C



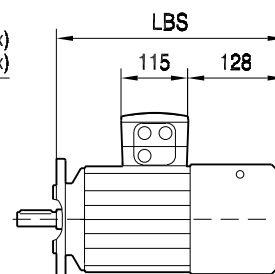
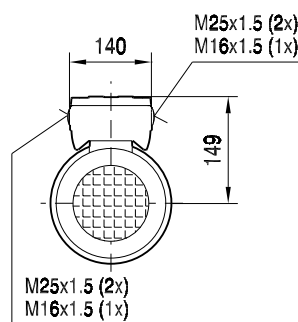
/ 2.WE



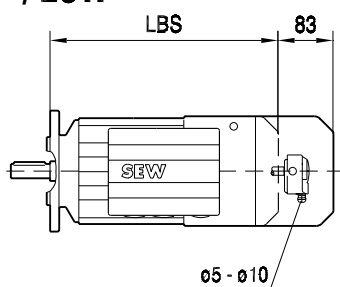
/ MM..



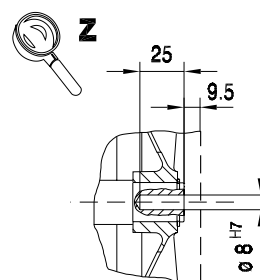
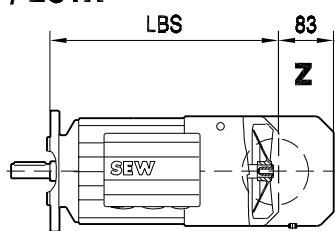
/ MSW



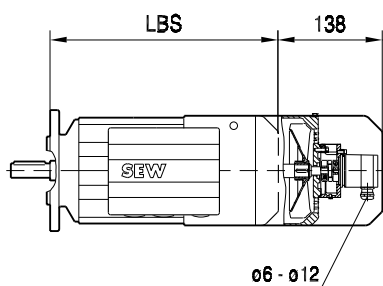
/ ES1.



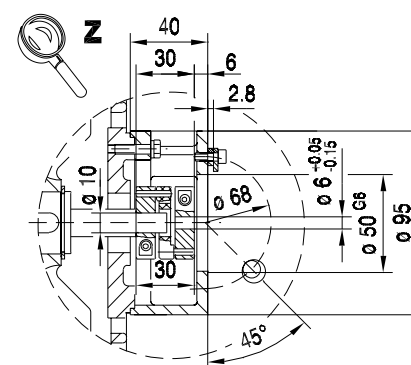
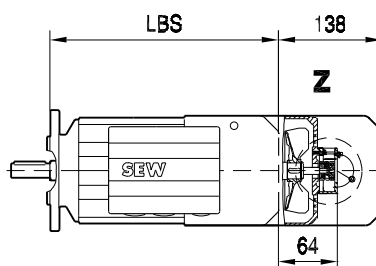
/ ES1A



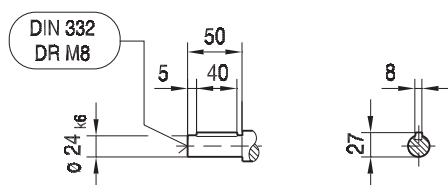
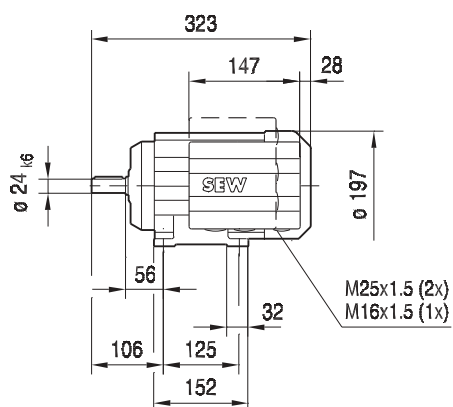
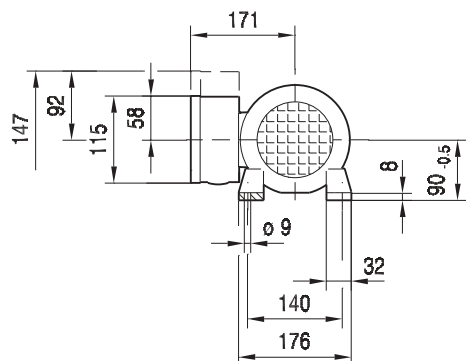
/ EV1.



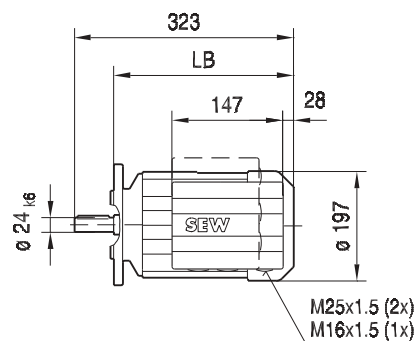
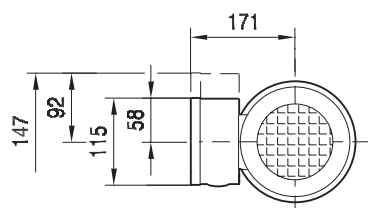
/ EV1A



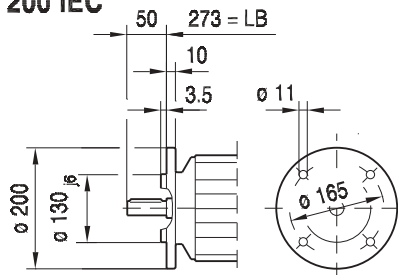
08 209 002
1 (2)



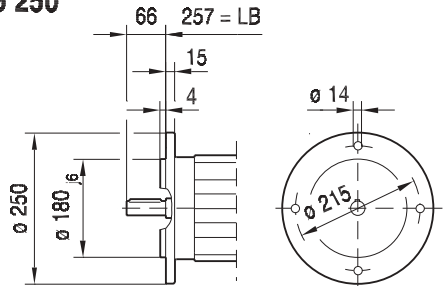
DFT90..
eDFT90..



Ø 200 IEC



Ø 250

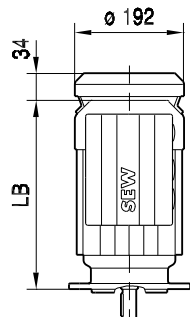




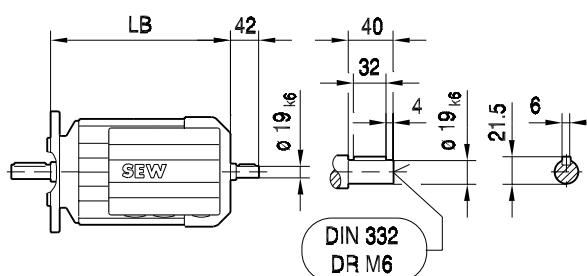
D(F)T90..

08 209 002
2 (2)

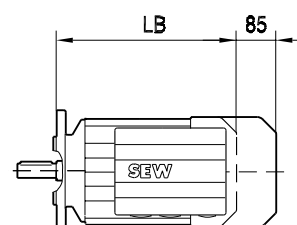
/ C



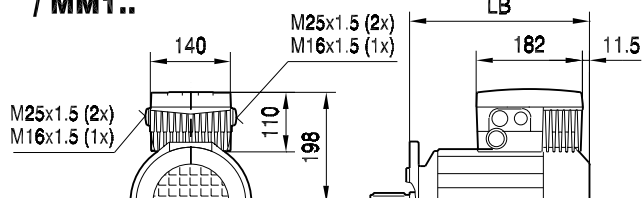
/ 2.WE



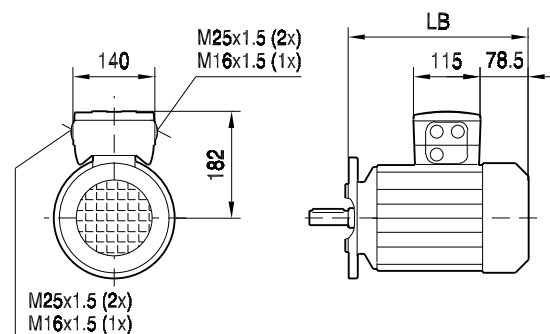
/ RS



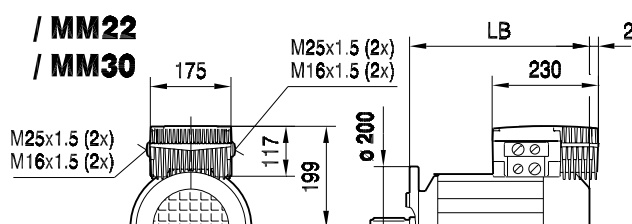
/ MM1..



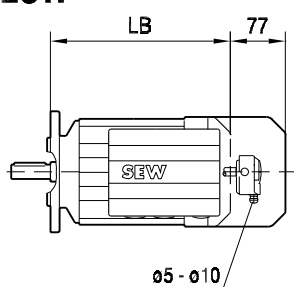
/ MSW



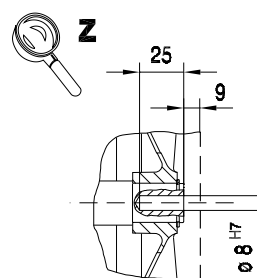
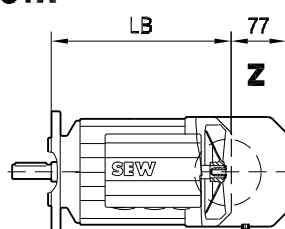
**/ MM22
/ MM30**



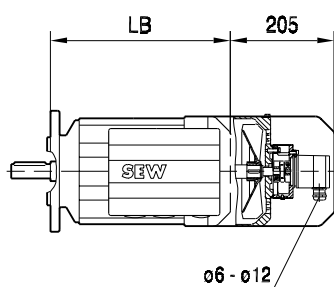
/ ES1.



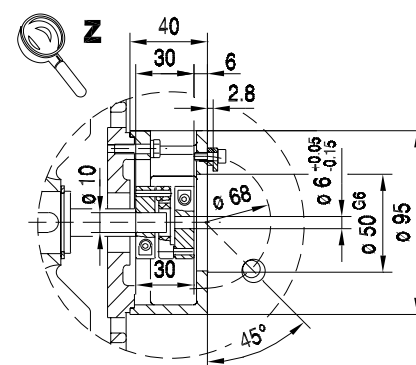
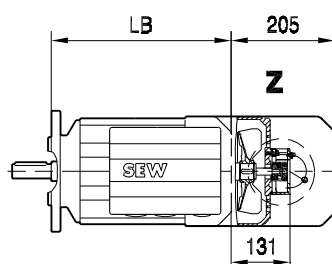
/ ES1A



/ EV1.



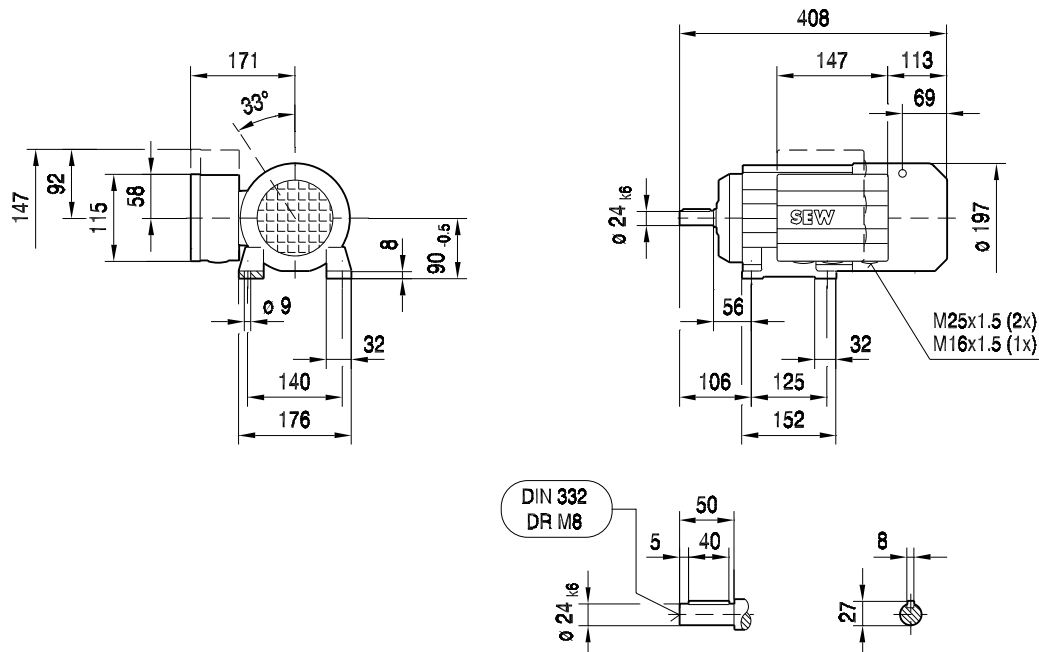
/ EV1A



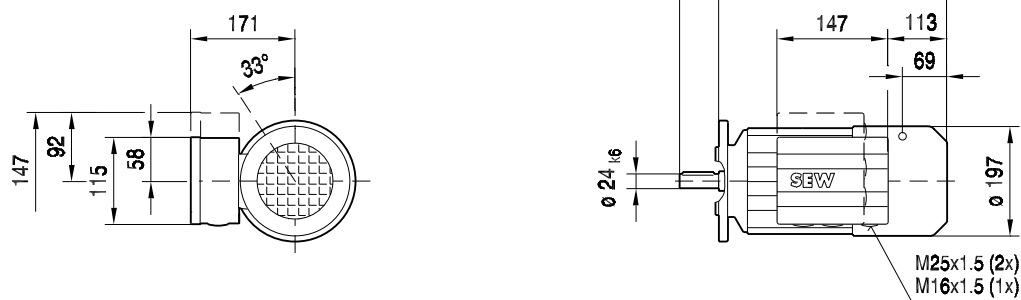


DT90.. / BMG

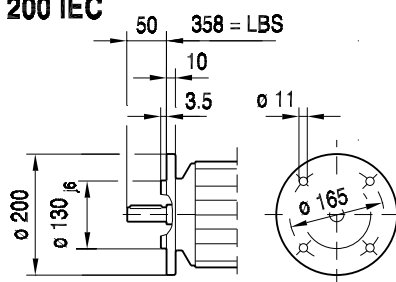
09 057 002
1 (2)



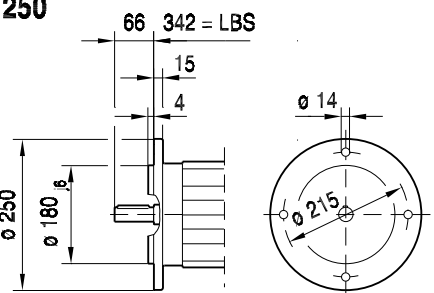
DFT90.. / BMG



ø 200 IEC



ø 250

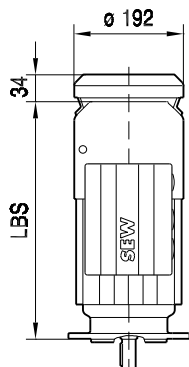




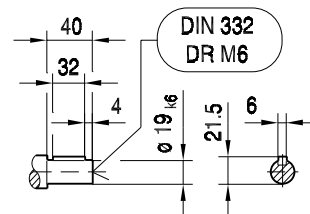
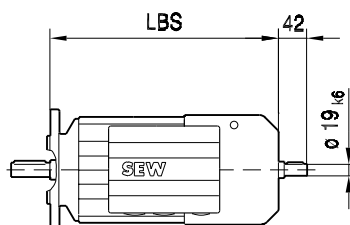
D(F)T90.. / BMG

09 057 002
2 (2)

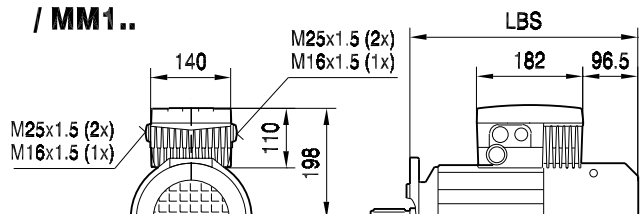
/ C



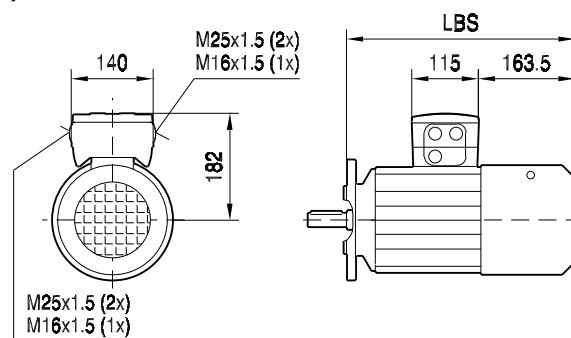
/ 2.WE



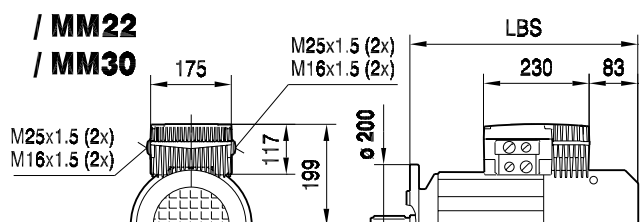
/ MM1..



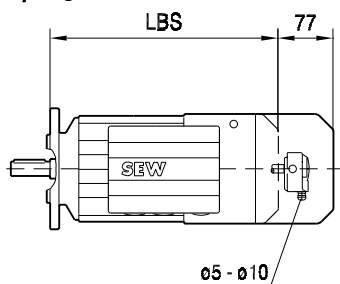
/ MSW



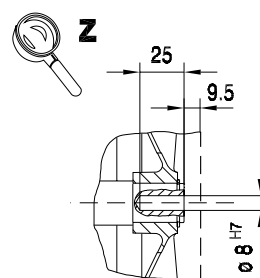
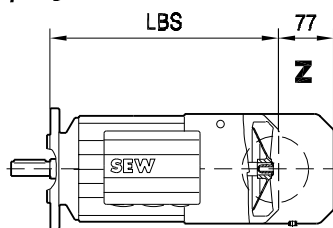
**/ MM22
/ MM30**



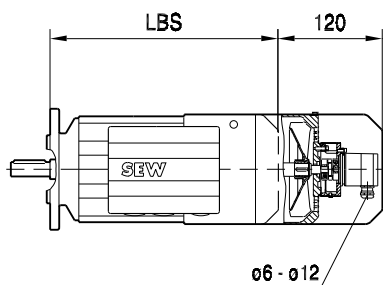
/ ES1.



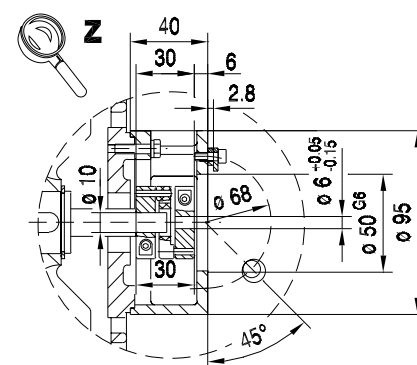
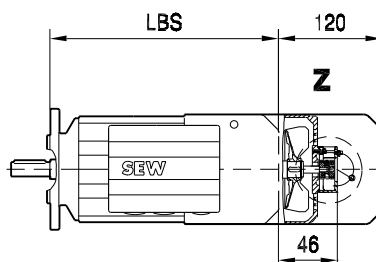
/ ES1A



/ EV1.



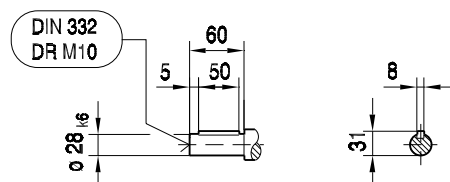
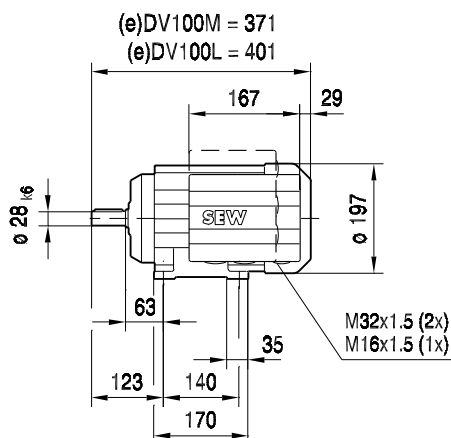
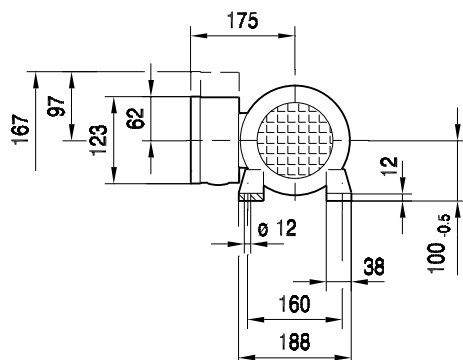
/ EV1A



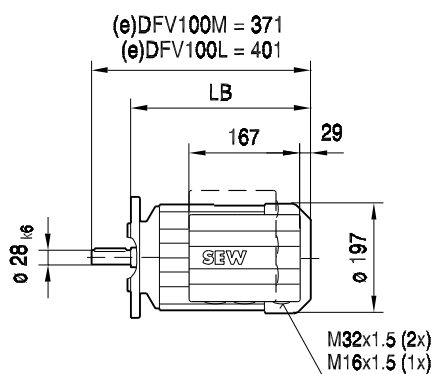
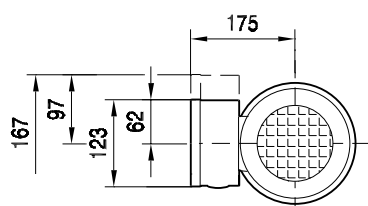


DV100.. eDV100..

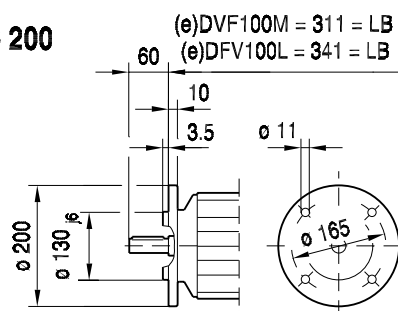
08 210 002
1 (2)



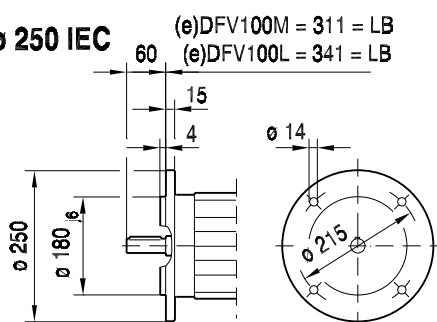
DFV100.. eDFV100..



ø 200



ø 250 IEC

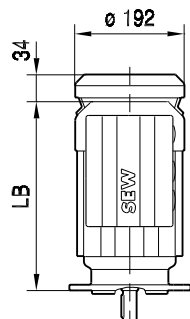




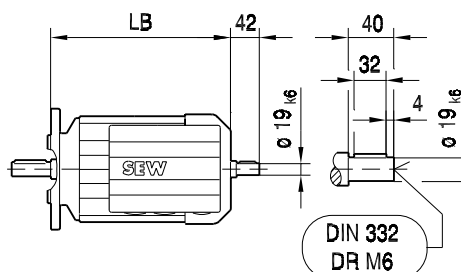
D(F)V100..

08 210 002
2 (2)

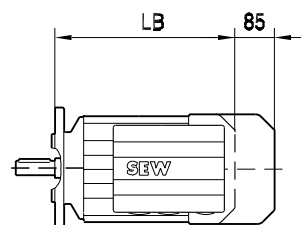
/ C



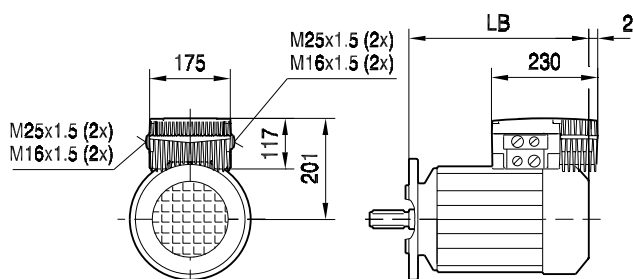
/ 2.WE



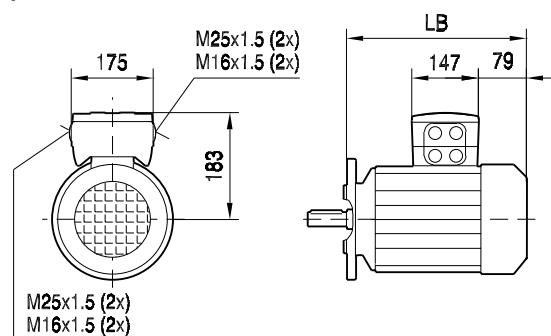
/ RS



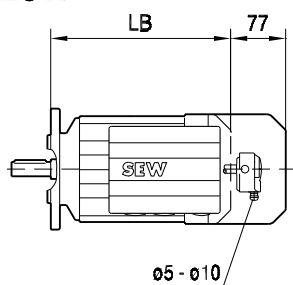
/ MM..



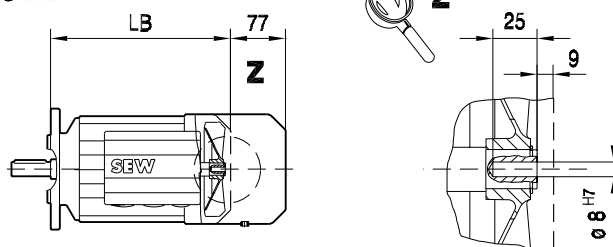
/ MSW



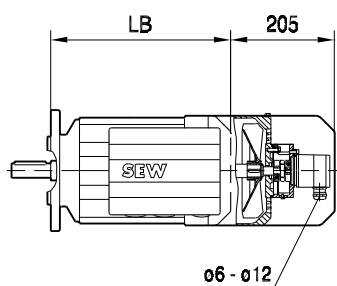
/ ES1.



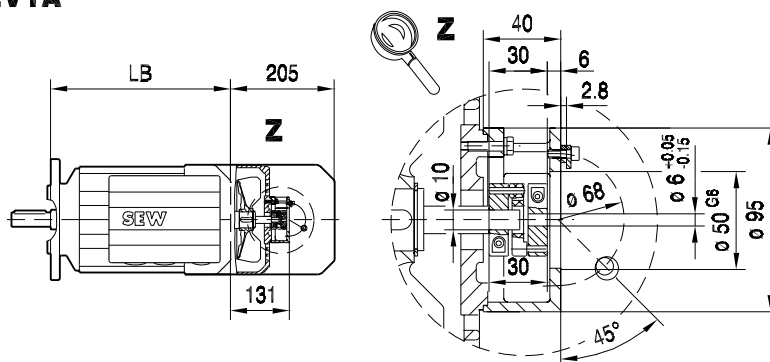
/ ES1A



/ EV1.



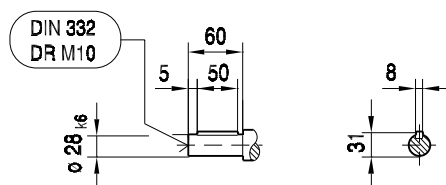
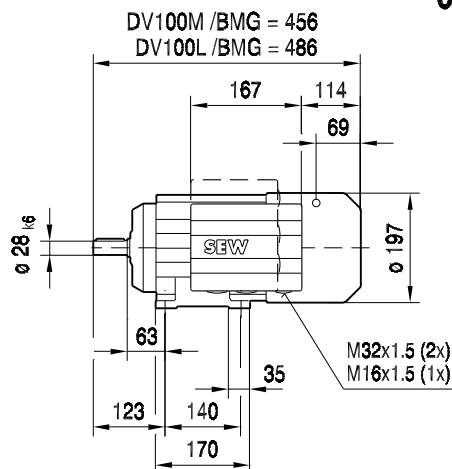
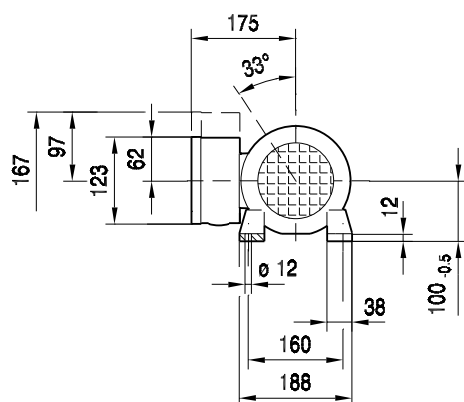
/ EV1A



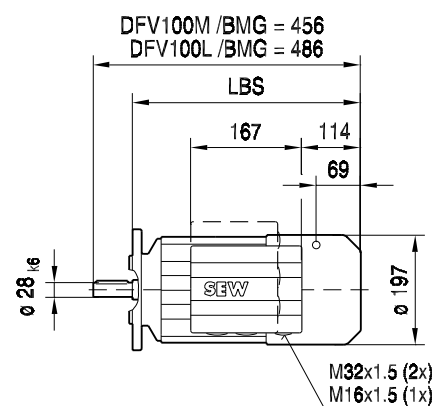
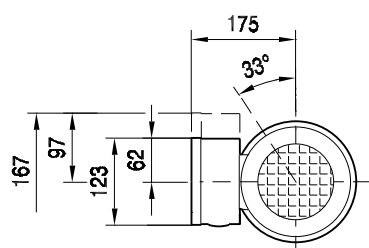


DV100.. / BMG

09 058 002
1 (2)

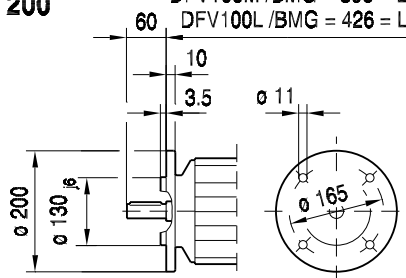


DFV100.. / BMG



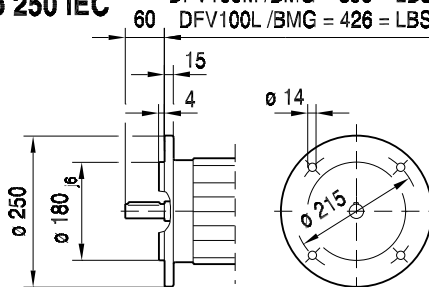
ø 200

DFV100M / BMG = 396 = LBS
DFV100L / BMG = 426 = LBS



ø 250 IEC

DFV100M / BMG = 396 = LBS
DFV100L / BMG = 426 = LBS

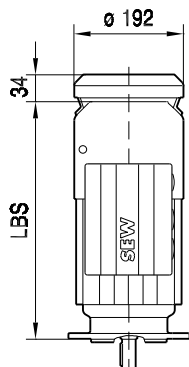




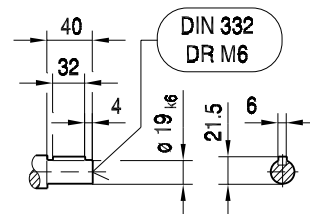
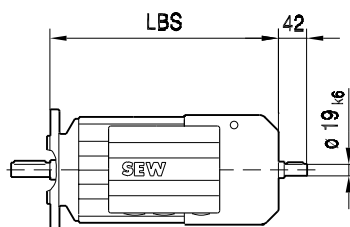
D(F)T100.. / BMG

09 058 002
2 (2)

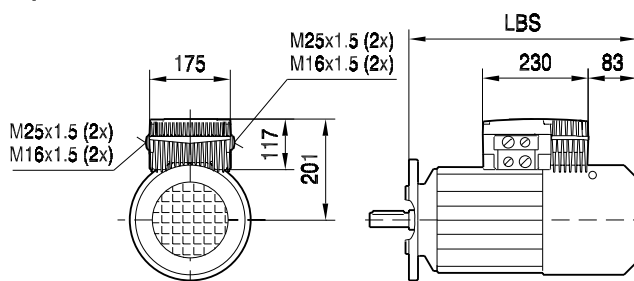
/ C



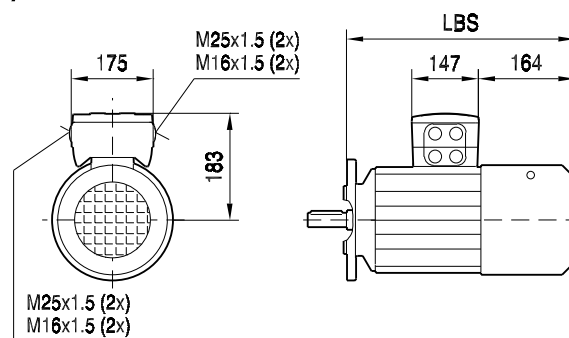
/ 2.WE



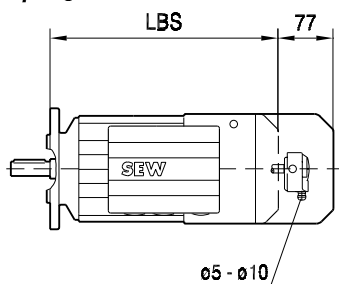
/ MM..



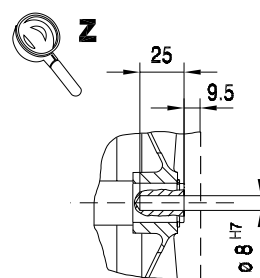
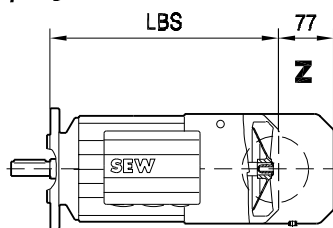
/ MSW



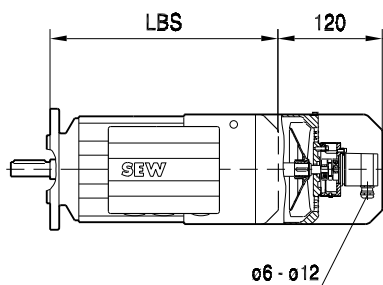
/ ES1.



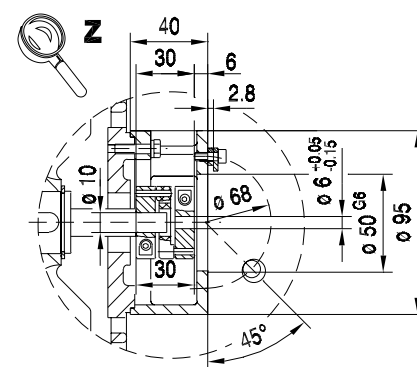
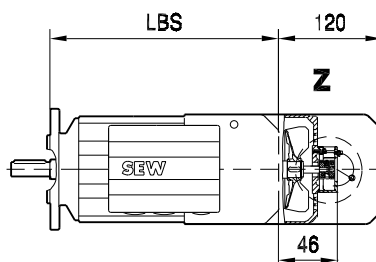
/ ES1A



/ EV1.



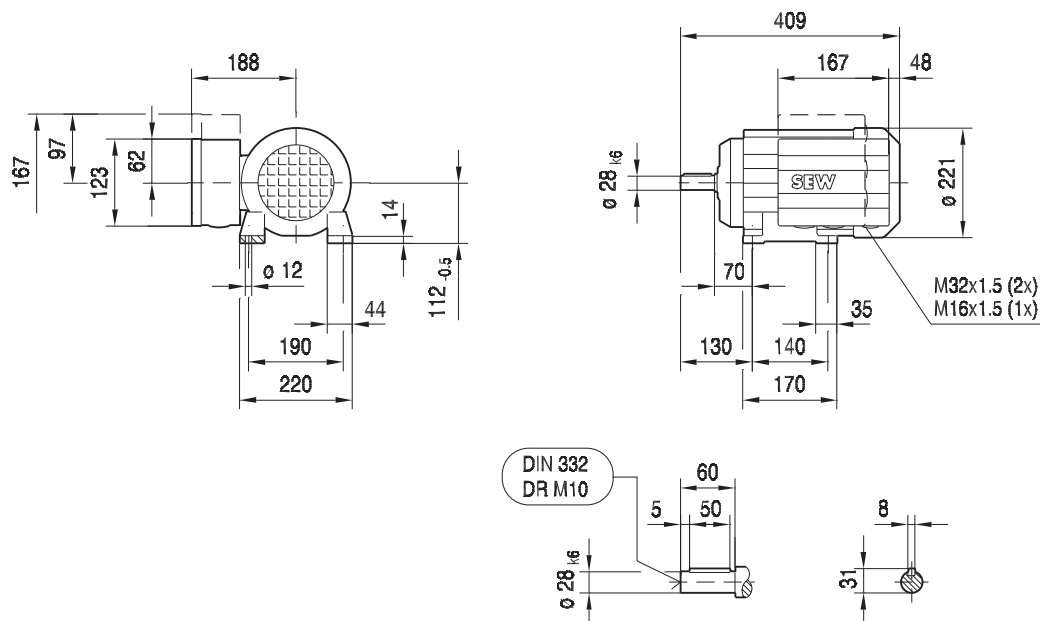
/ EV1A



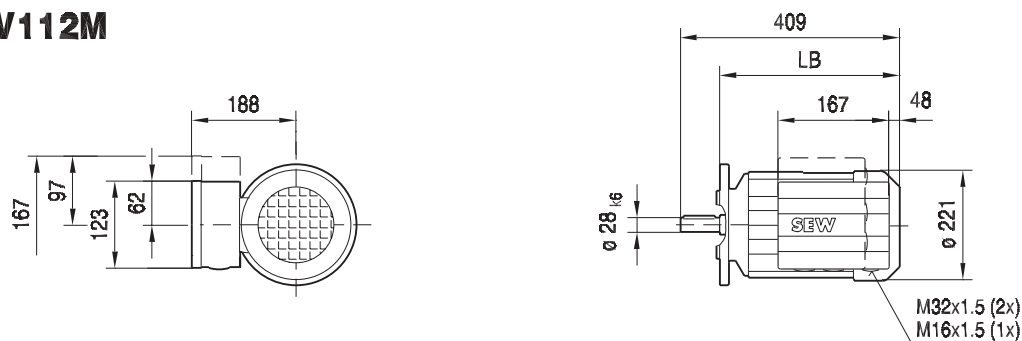


DV112M eDV112M

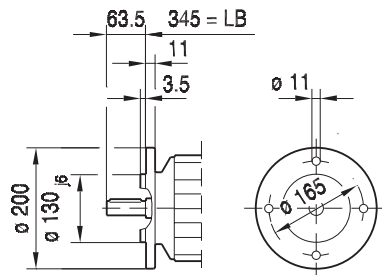
08 211 002
1 (2)



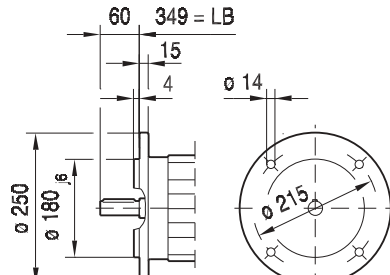
DFV112M eDFV112M



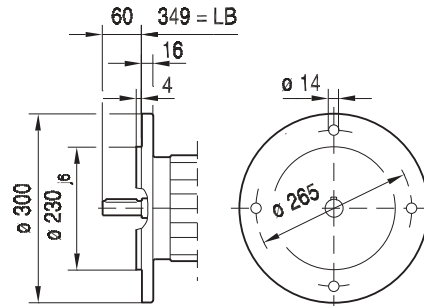
$\phi 200$



$\phi 250$ IEC



$\phi 300$

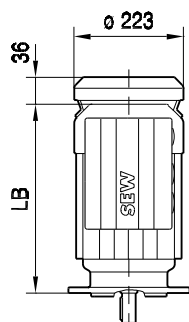




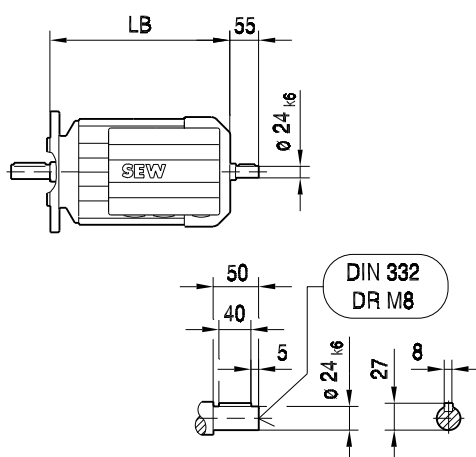
D(F)V112M

08 211 002
2 (2)

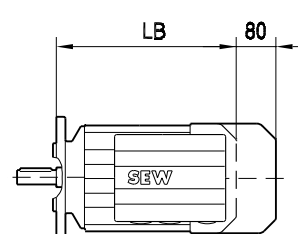
/ C



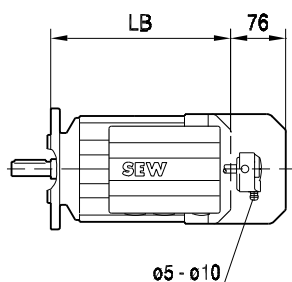
/ 2.WE



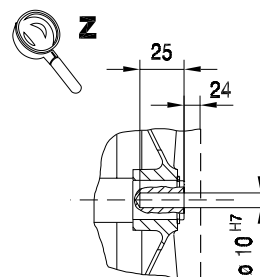
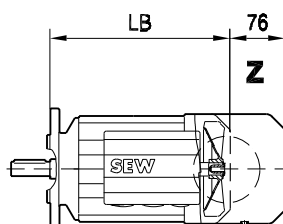
/ RS



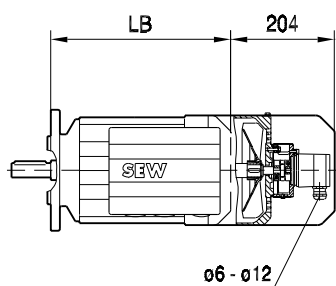
/ ES2.



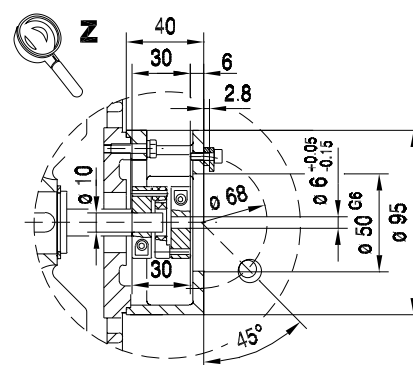
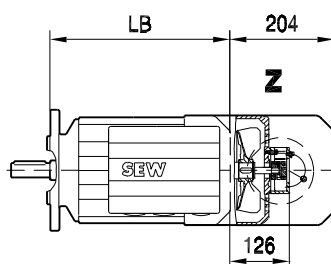
/ ES2A



/ EV1.



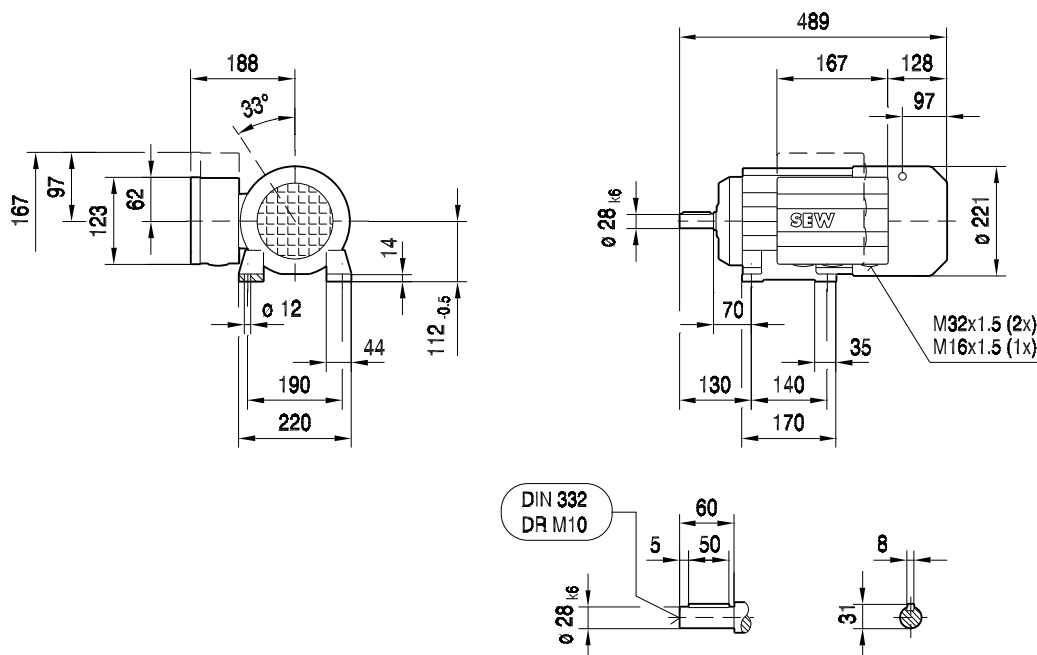
/ EV1A



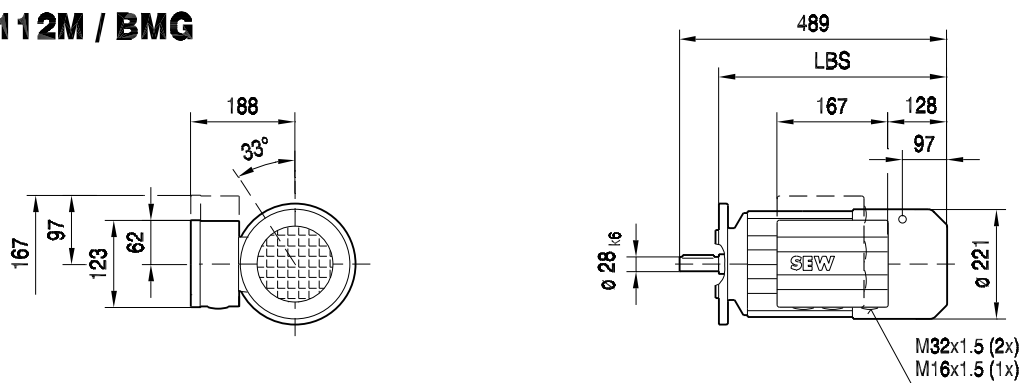


DV112M / BMG

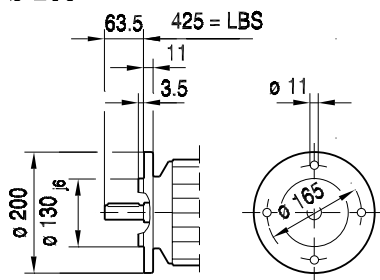
09 059 002
1 (2)



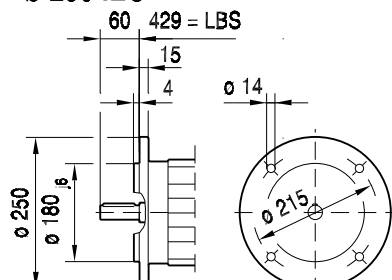
DFV112M / BMG



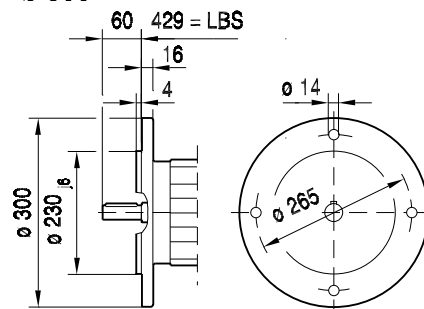
ø 200



ø 250 IEC



ø 300

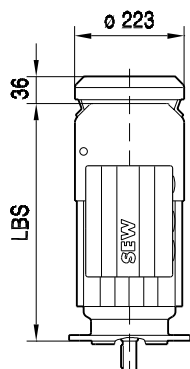




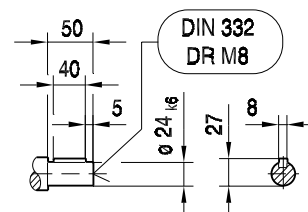
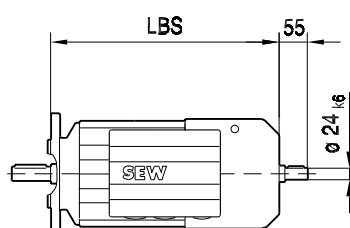
D(F)V112M / BMG

09 059 002
2 (2)

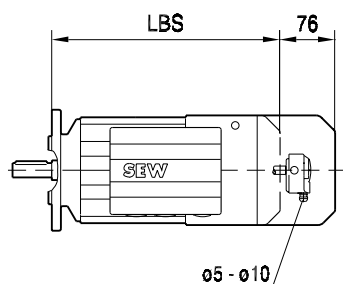
/ C



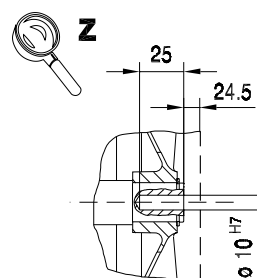
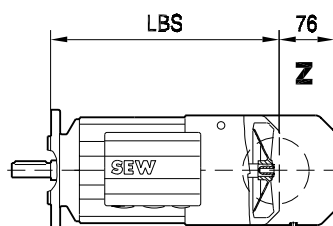
/ 2.WE



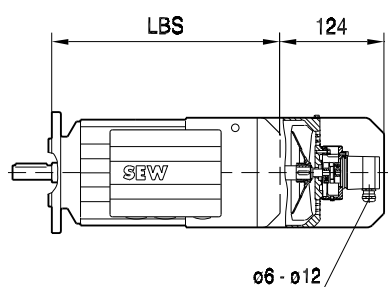
/ ES2.



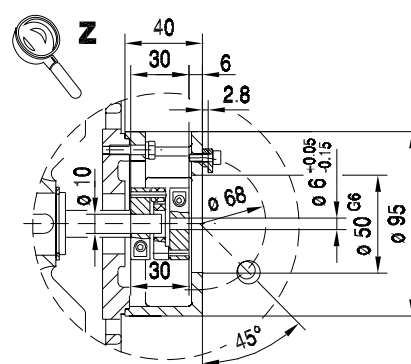
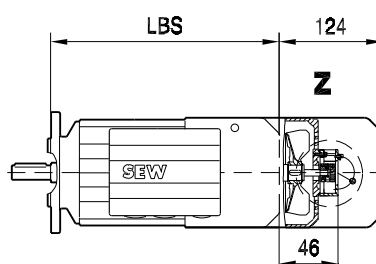
/ ES2A



/ EV1.



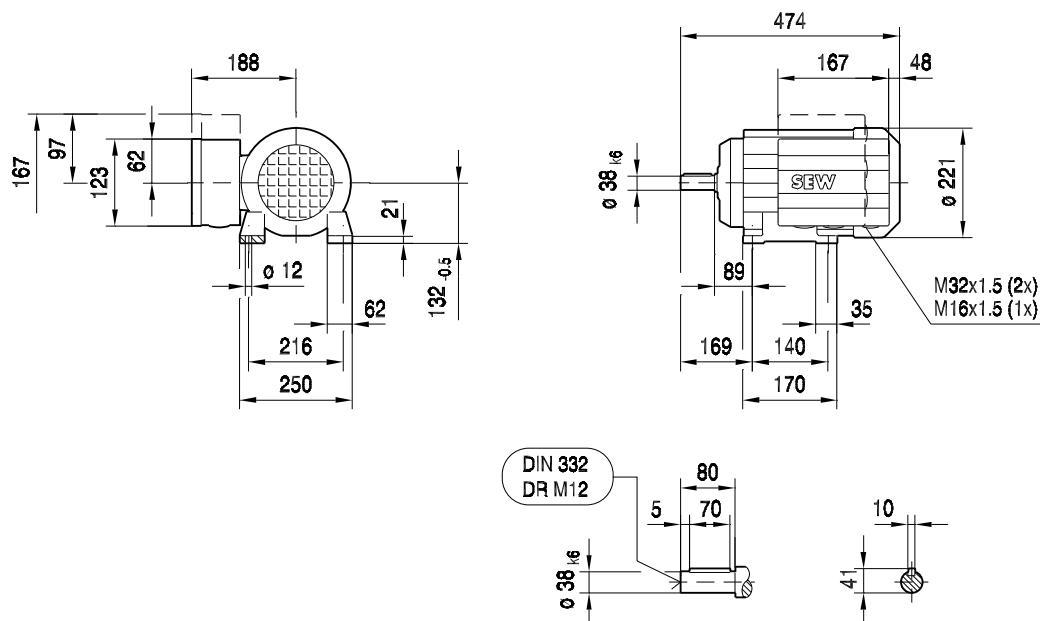
/ EV1A



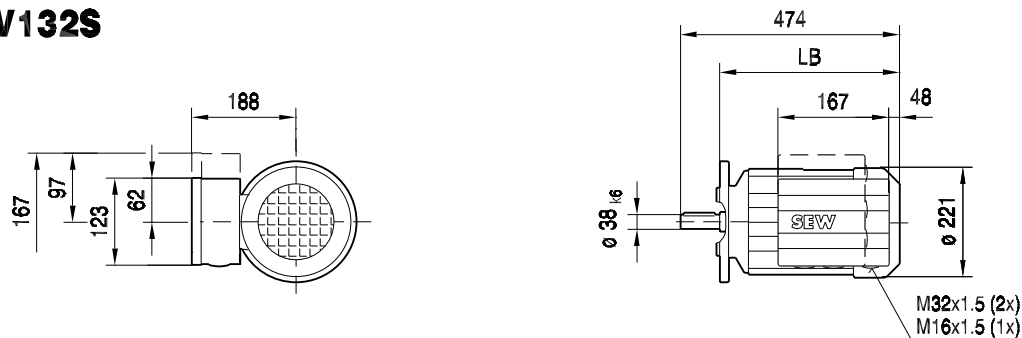


DV132S eDV132S

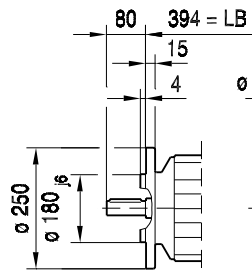
08 212 002
1 (2)



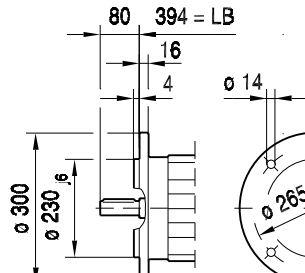
DFV132S eDFV132S



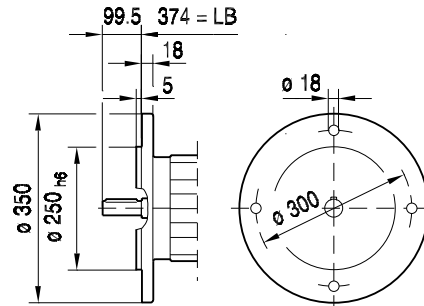
ø 250



ø 300 IEC



ø 350

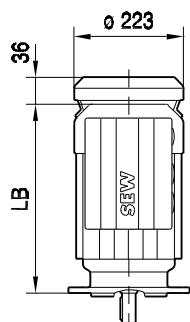




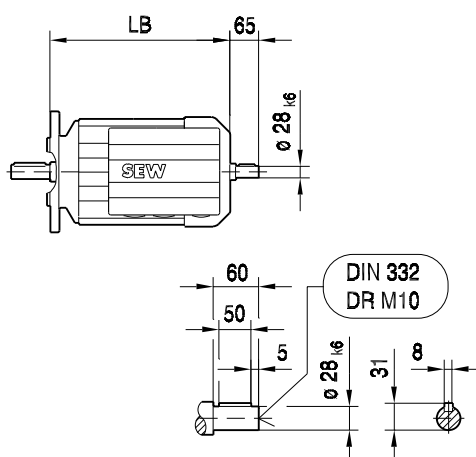
D(F)V132S

08 212 002
2 (2)

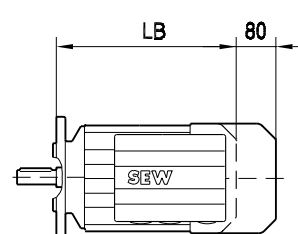
/ C



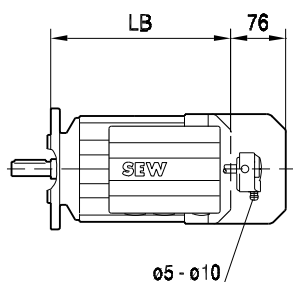
/ 2.WE



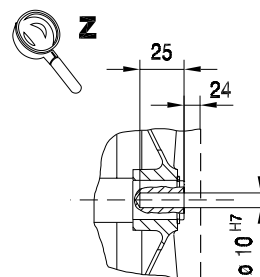
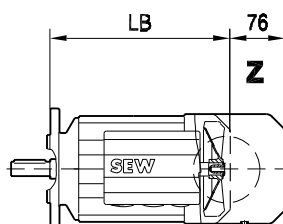
/ RS



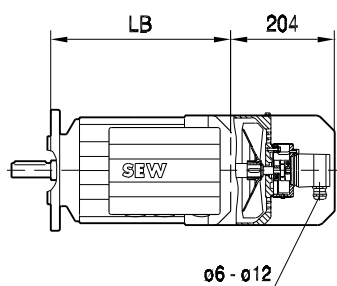
/ ES2.



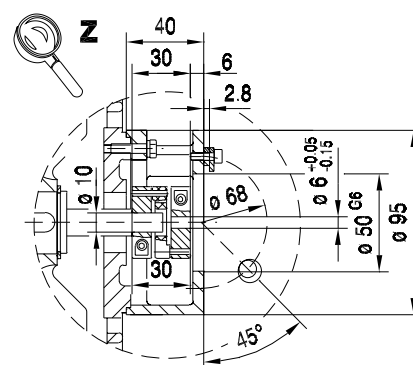
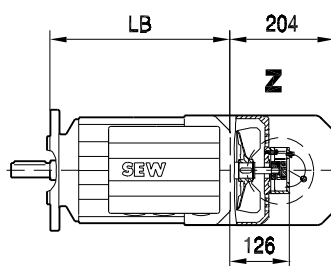
/ ES2A



/ EV1.



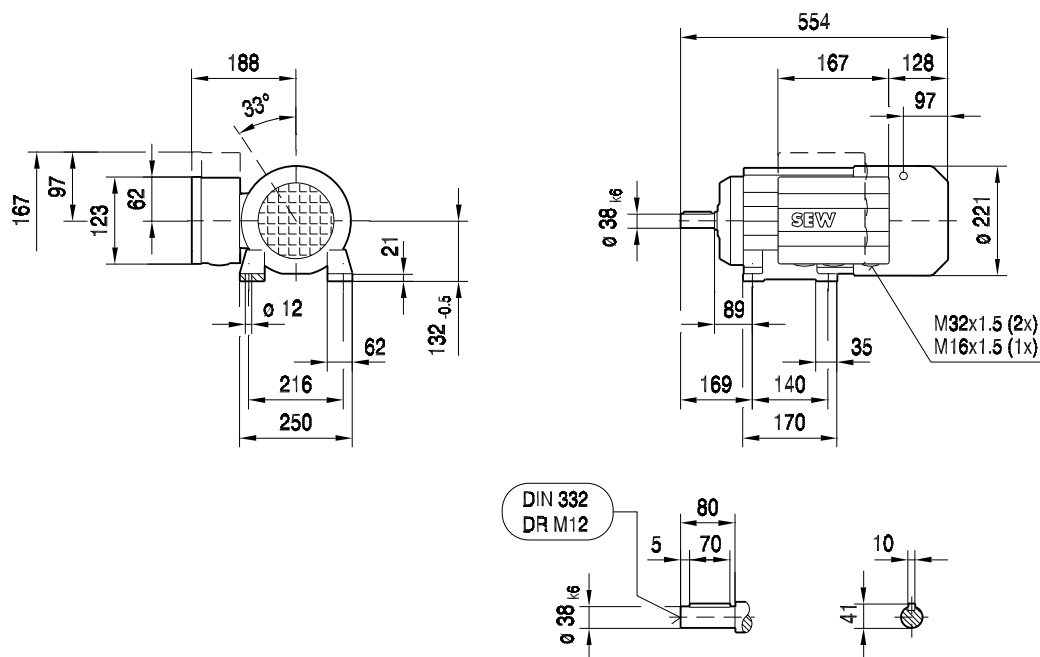
/ EV1A



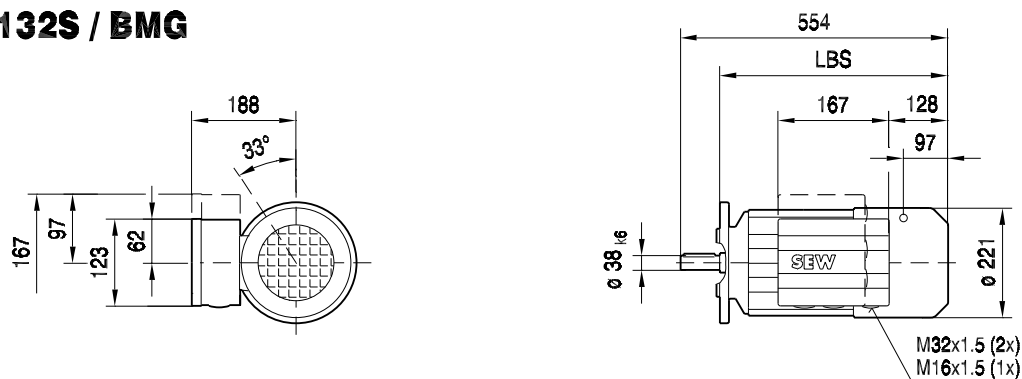


DV132S / BMG

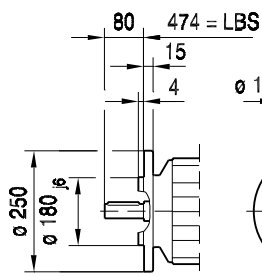
09 060 002
1 (2)



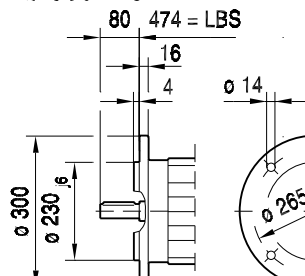
DFV132S / BMG



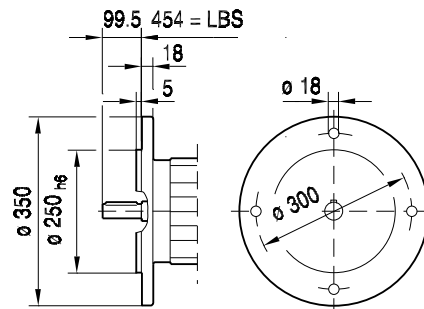
ø 250



ø 300 IEC



ø 350

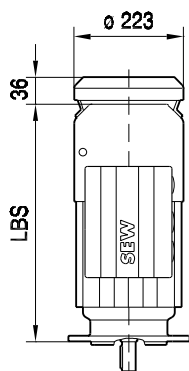




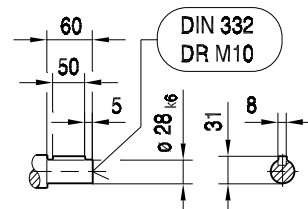
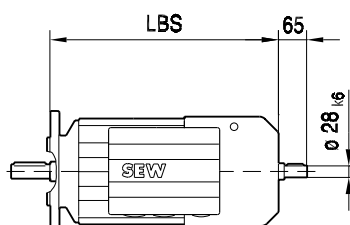
D(F)V132S / BMG

09 060 002
2 (2)

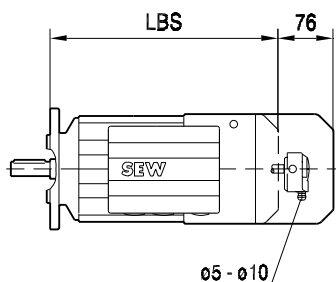
/ C



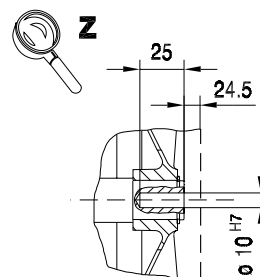
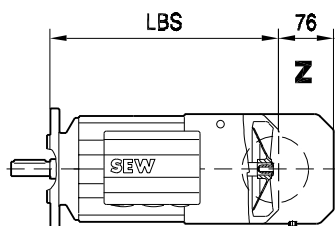
/ 2.WE



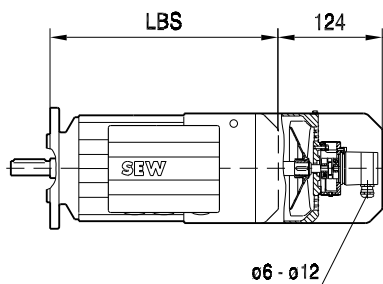
/ ES2.



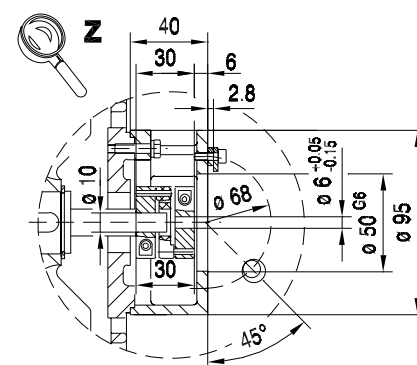
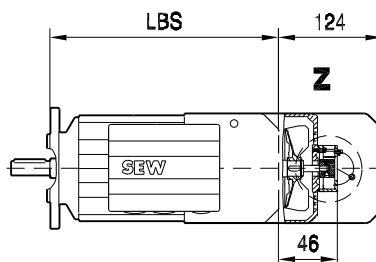
/ ES2A



/ EV1.



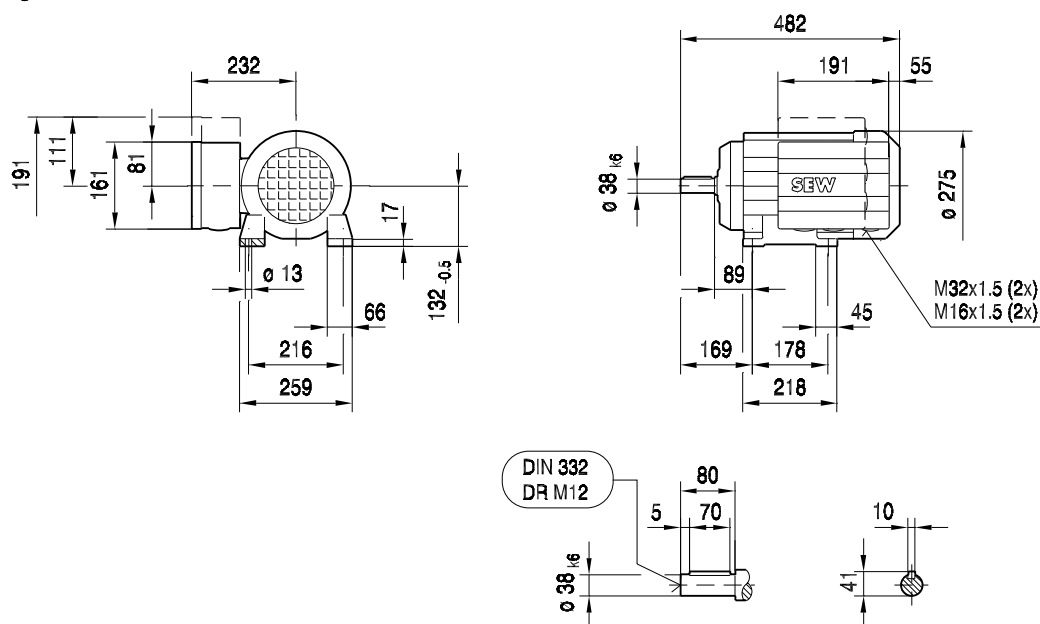
/ EV1A



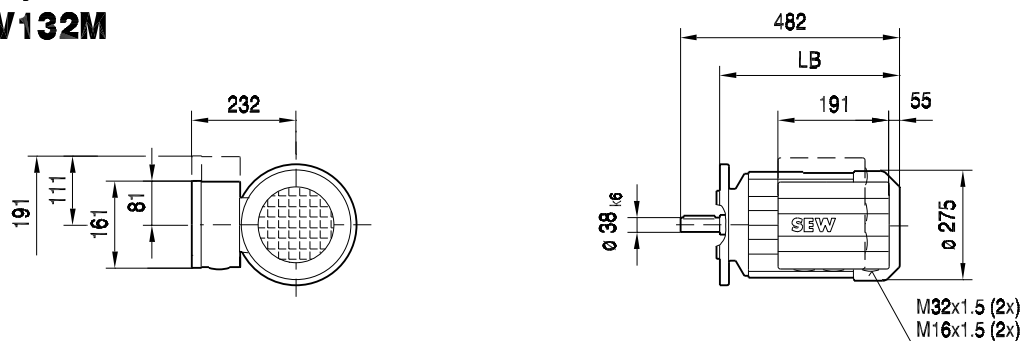


DV132M eDV132M

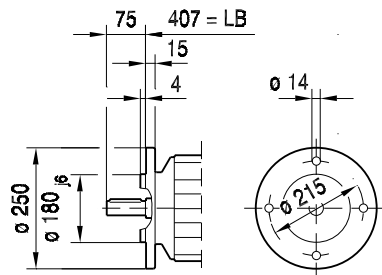
08 213 002
1 (2)



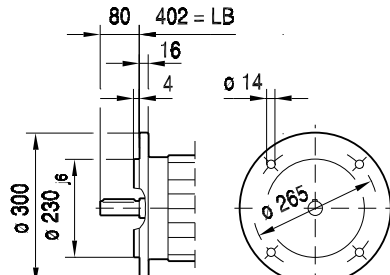
DFV132M eDFV132M



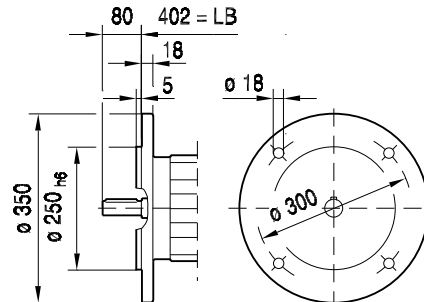
$\phi 250$



$\phi 300$ IEC



$\phi 350$

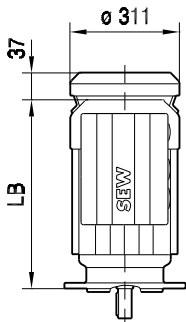




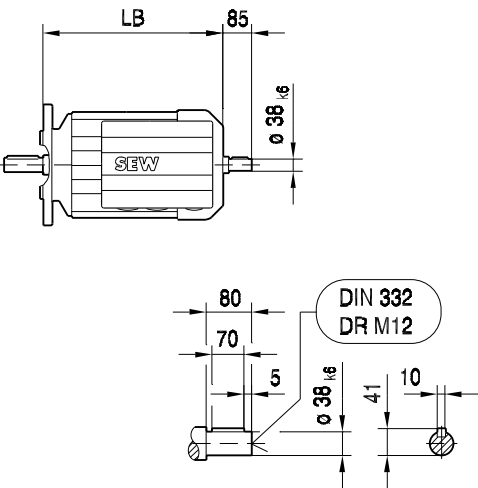
D(F)V132M

08 213 002
2 (2)

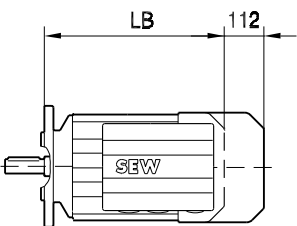
/ C



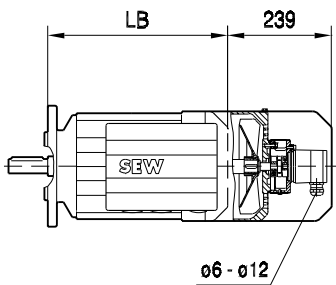
/ 2.WE



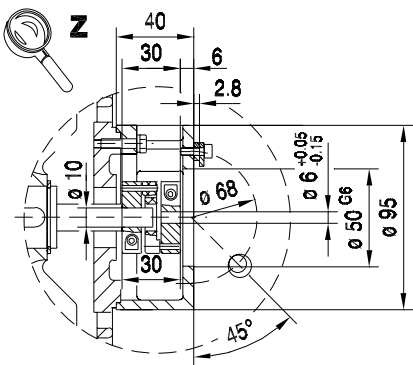
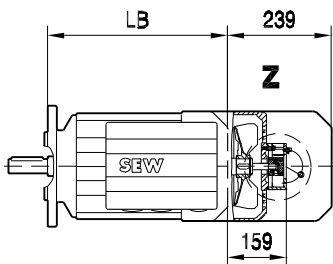
/ RS



/ EV1.



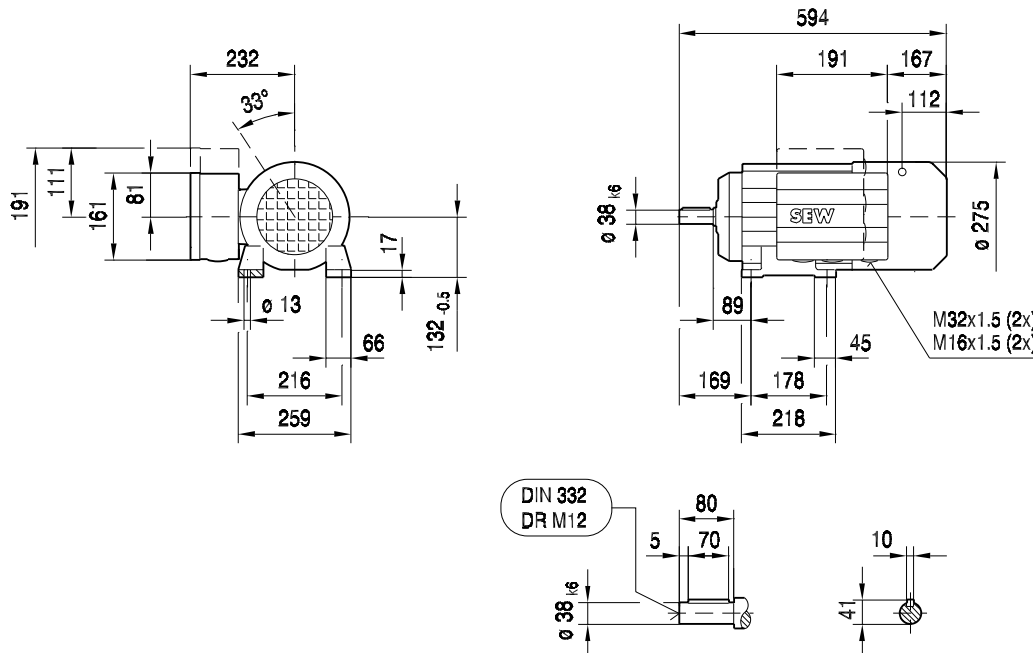
/ EV1A



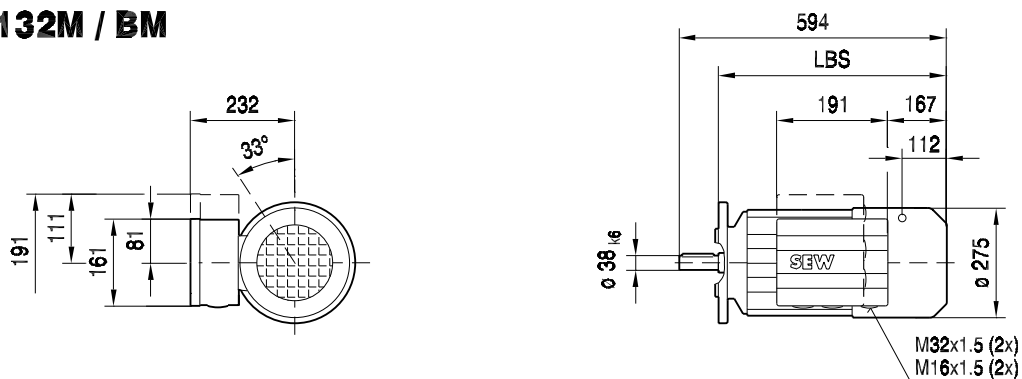


DV132M / BM

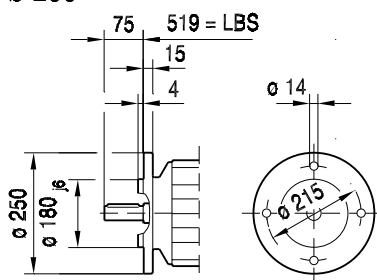
09 061 002
1 (2)



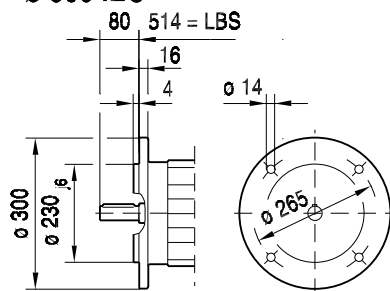
DFV132M / BM



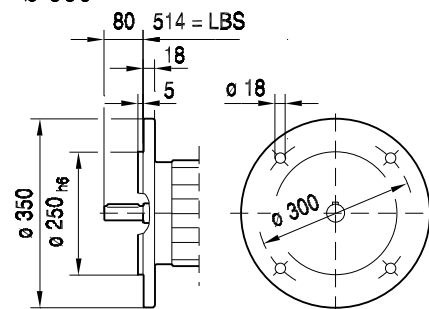
ø 250



ø 300 IEC



ø 350

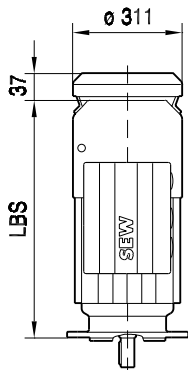




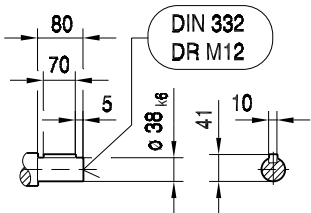
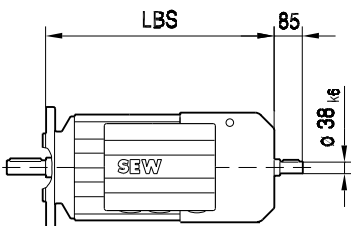
D(F)V132M / BM

09 061 002
2 (2)

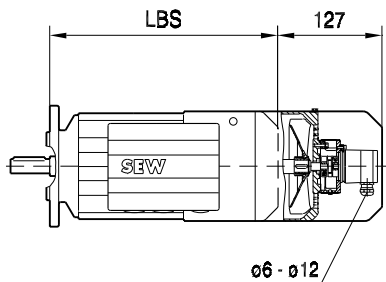
/ C



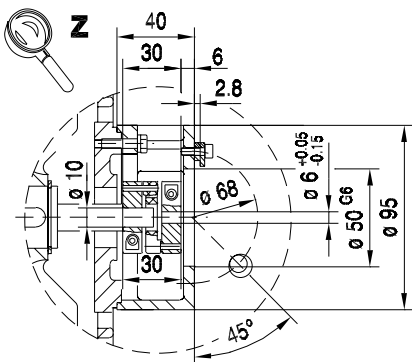
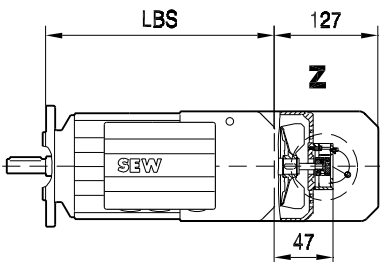
/ 2.WE



/ EV1.



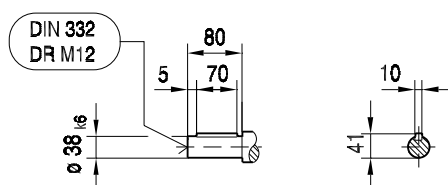
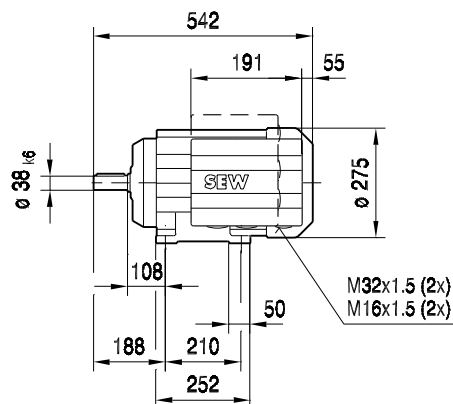
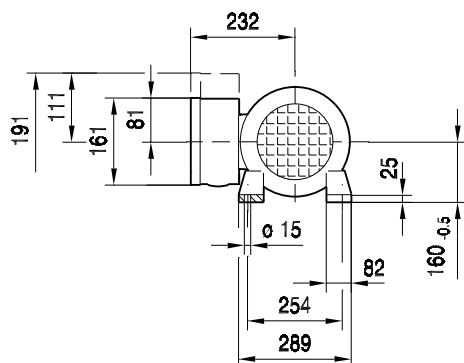
/ EV1A



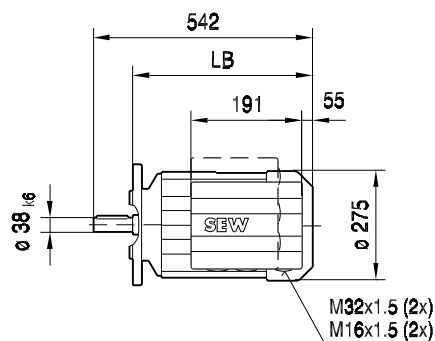
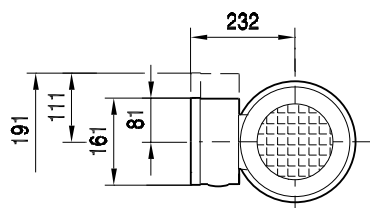


DV132ML eDV132ML

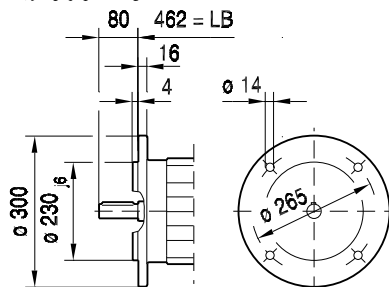
08 214 002
1 (2)



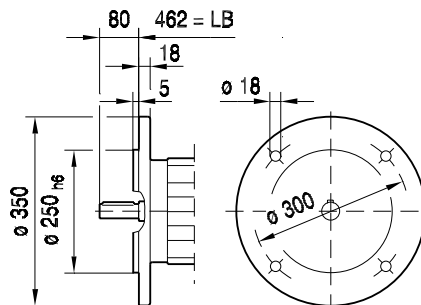
DFV132ML eDFV132ML



ø 300 IEC



ø 350

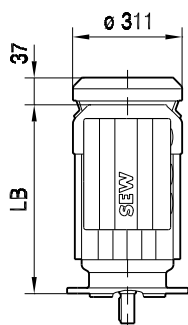




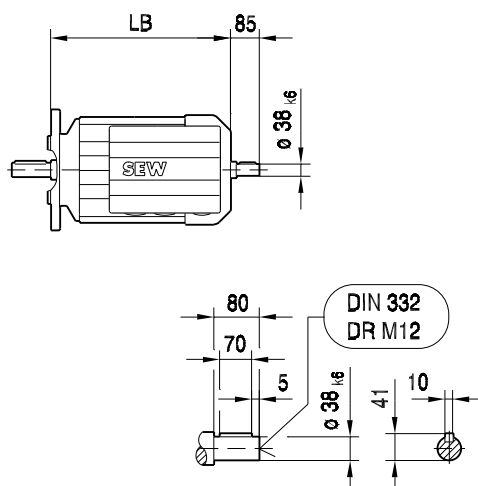
D(F)V132ML

08 214 002
2 (2)

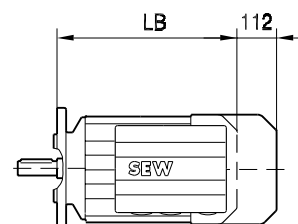
/ C



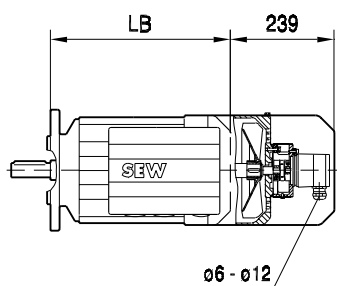
/ 2.WE



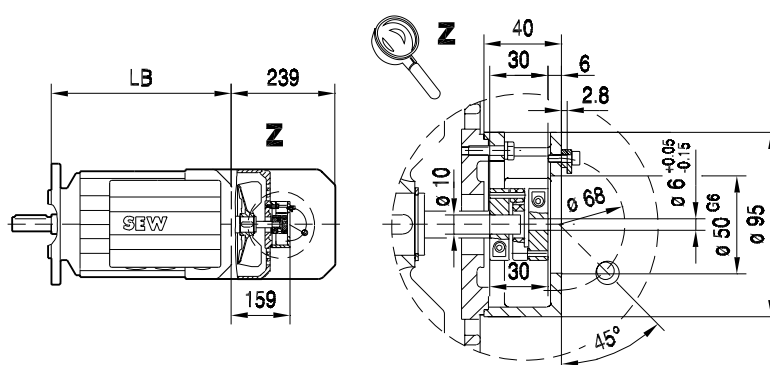
/ RS



/ EV1.



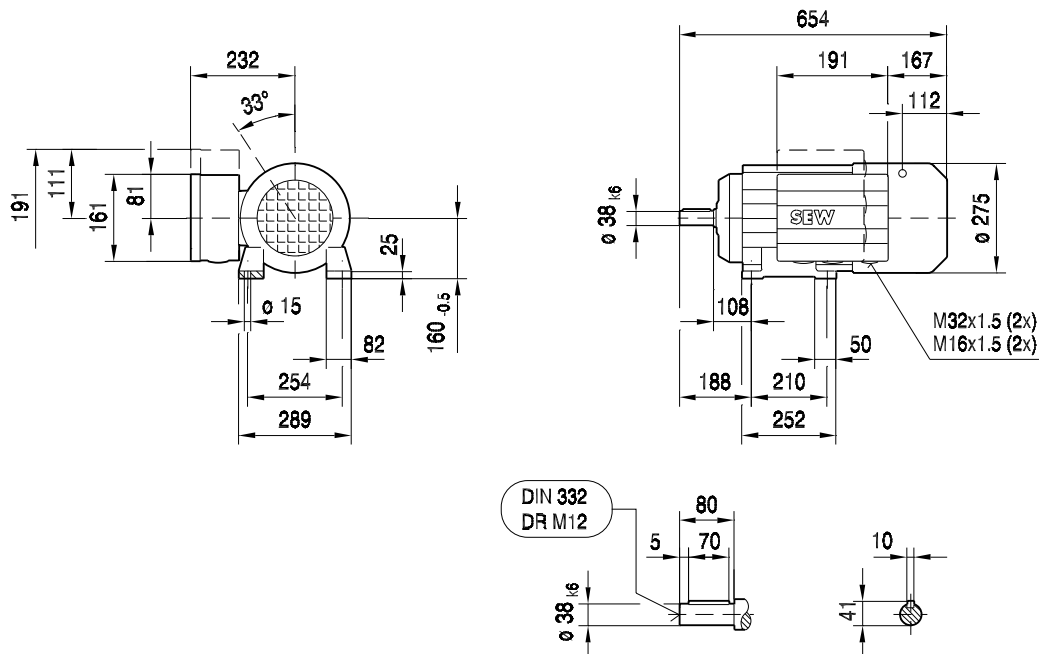
/ EV1A



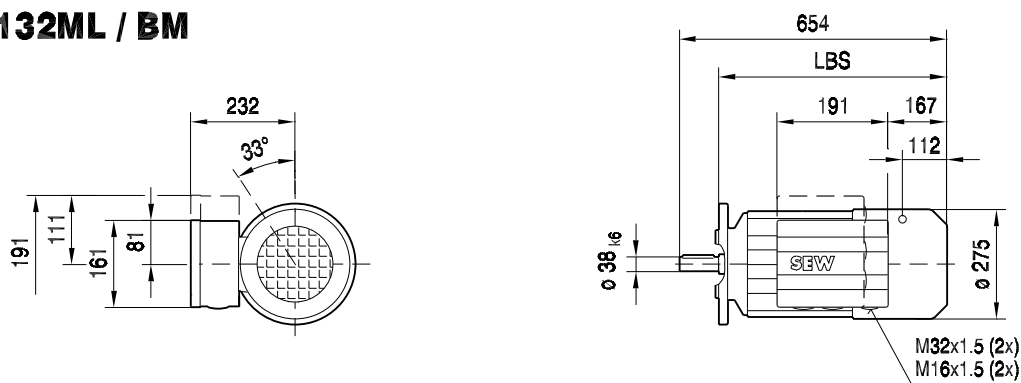


DV132ML / BM

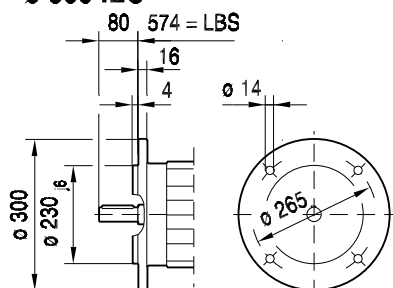
09 062 002
1 (2)



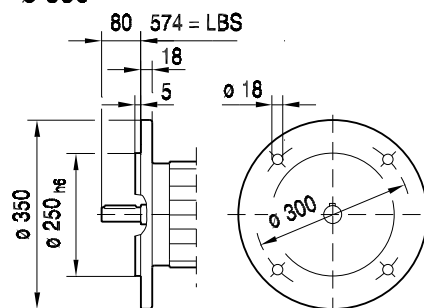
DFV132ML / BM



ø 300 IEC



ø 350

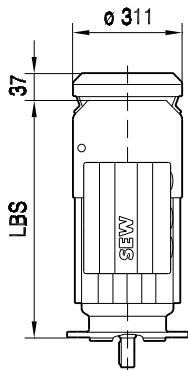




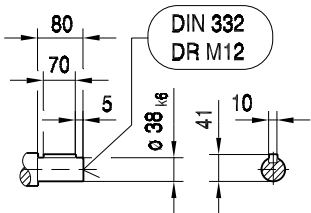
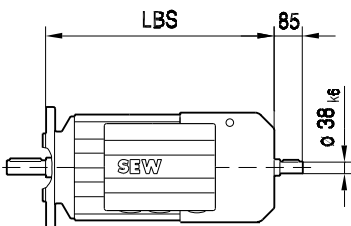
D(F)V132ML / BM

09 062 002
2 (2)

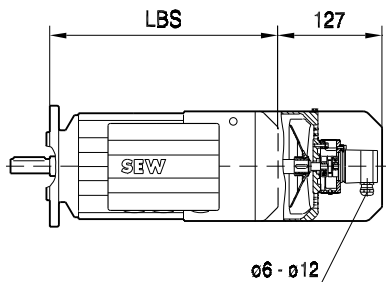
/ C



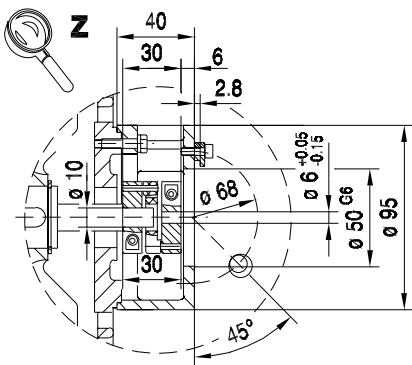
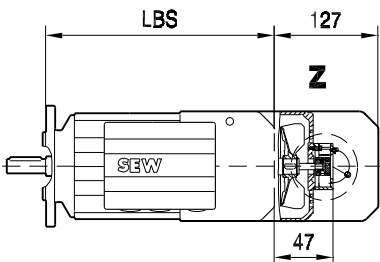
/ 2.WE



/ EV1.



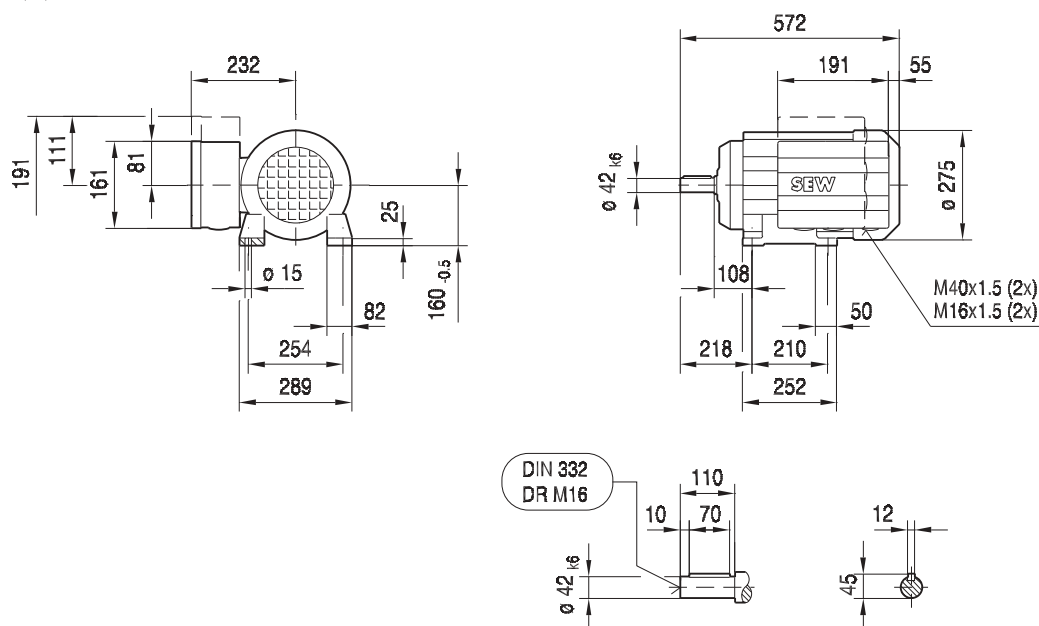
/ EV1A



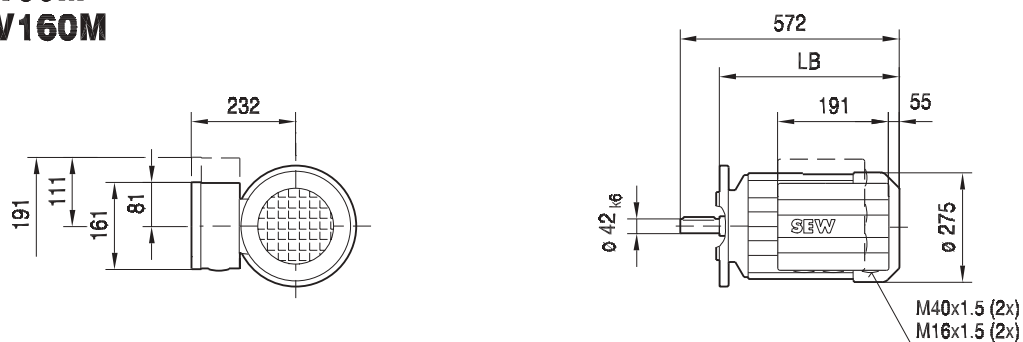


DV160M eDV160M

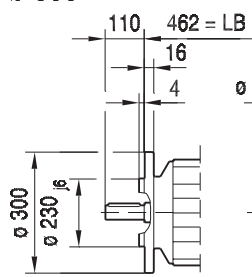
08 215 002
1 (2)



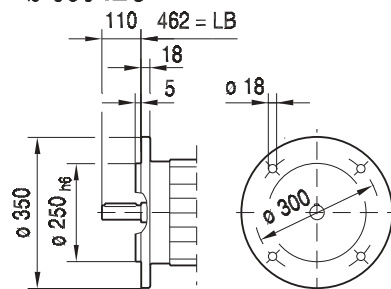
DFV160M eDFV160M



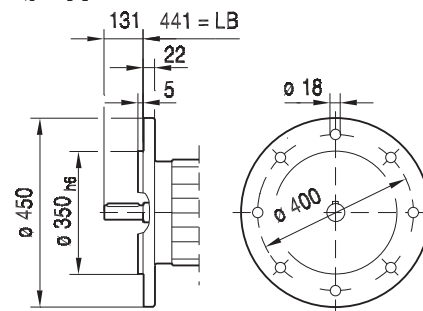
$\varnothing 300$



$\varnothing 350$ IEC



$\varnothing 450$

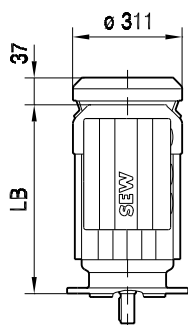




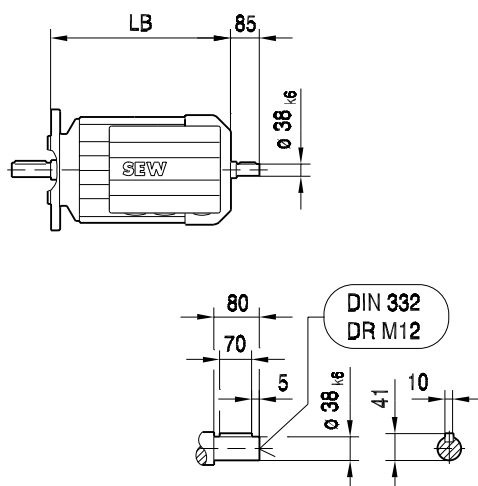
D(F)V160M

08 215 002
2 (2)

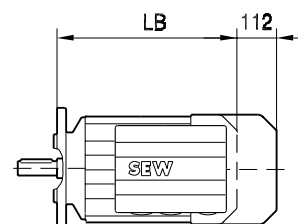
/ C



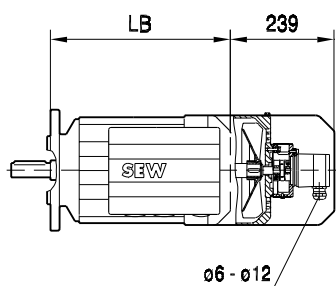
/ 2.WE



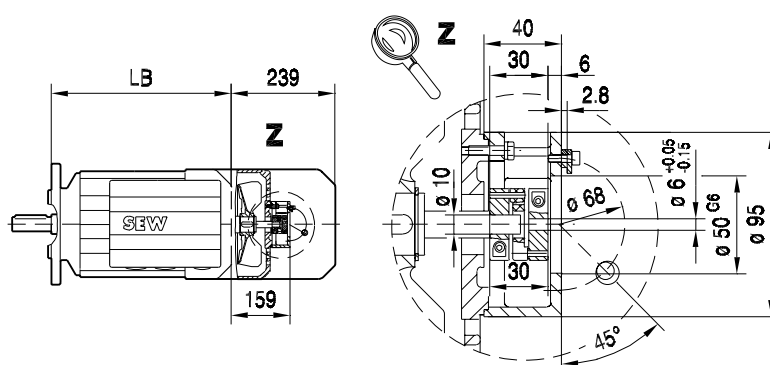
/ RS



/ EV1.



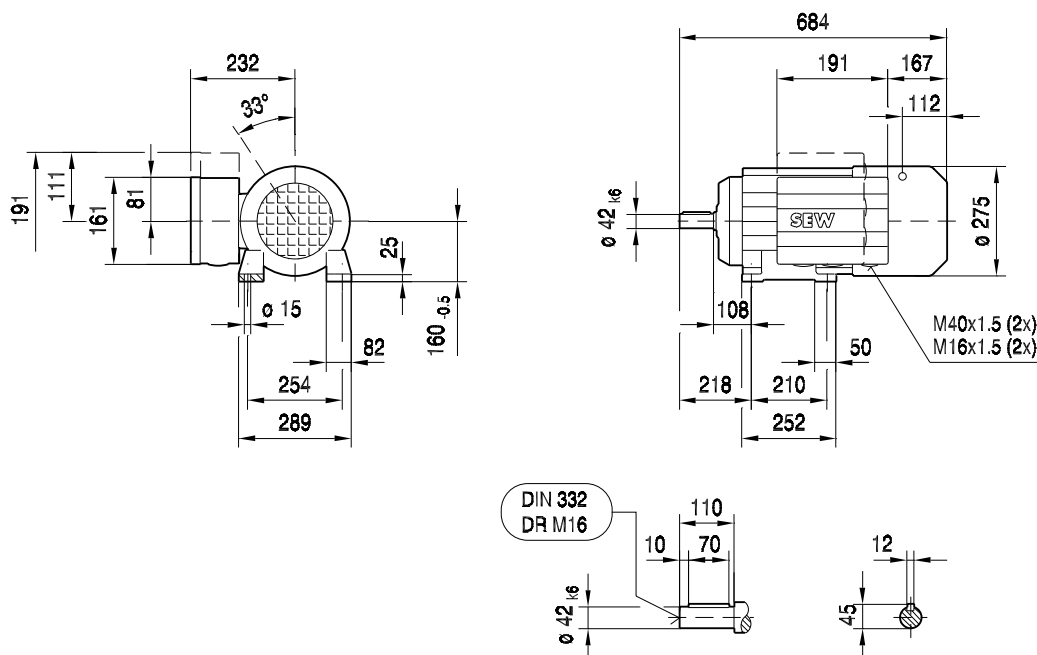
/ EV1A



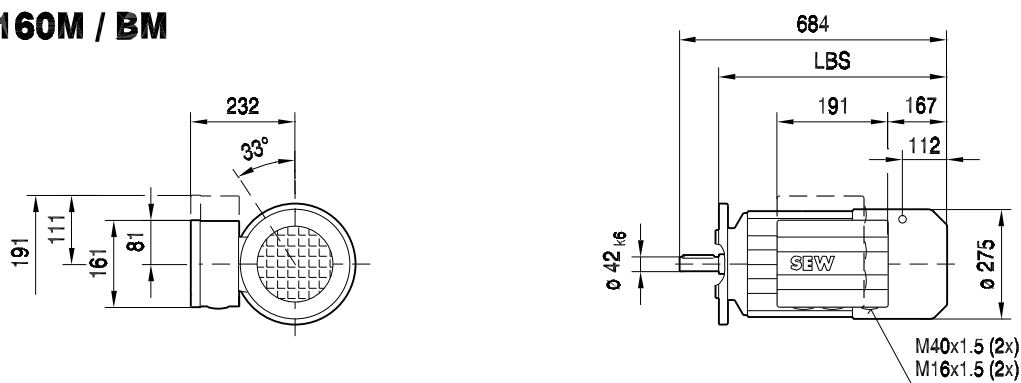


DV160M / BM

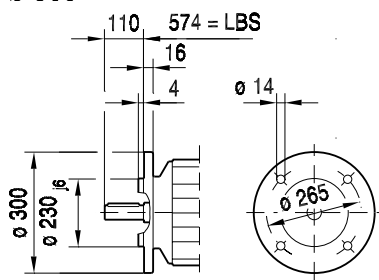
09 063 002
1 (2)



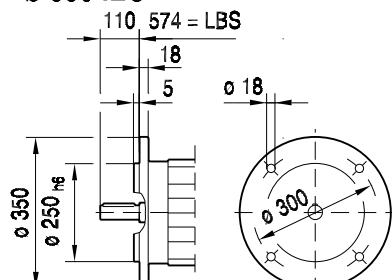
DFV160M / BM



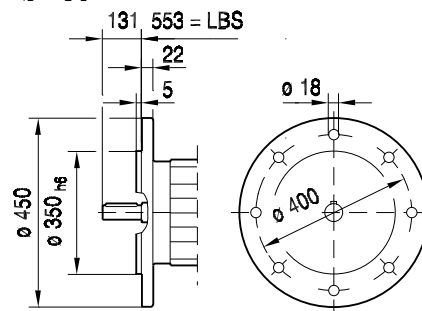
ø 300



ø 350 IEC



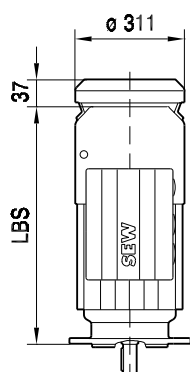
ø 450



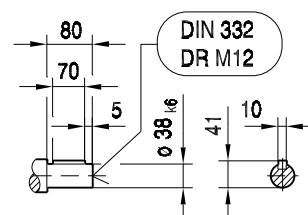
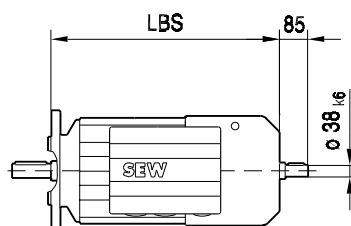
D(F)V160M / BM

09 063 002
2 (2)

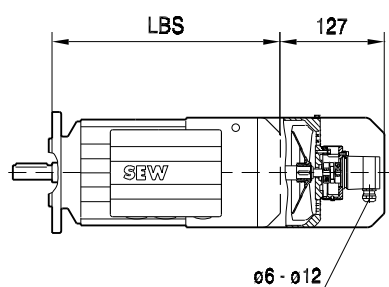
/c



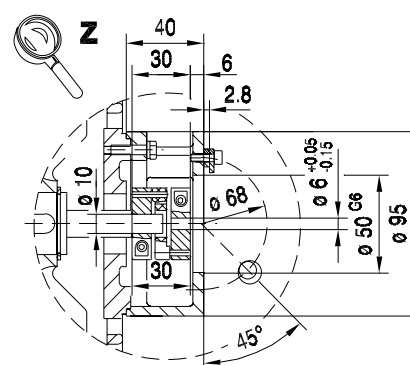
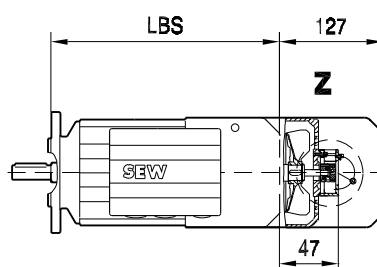
/ 2.WE



/ EV1.



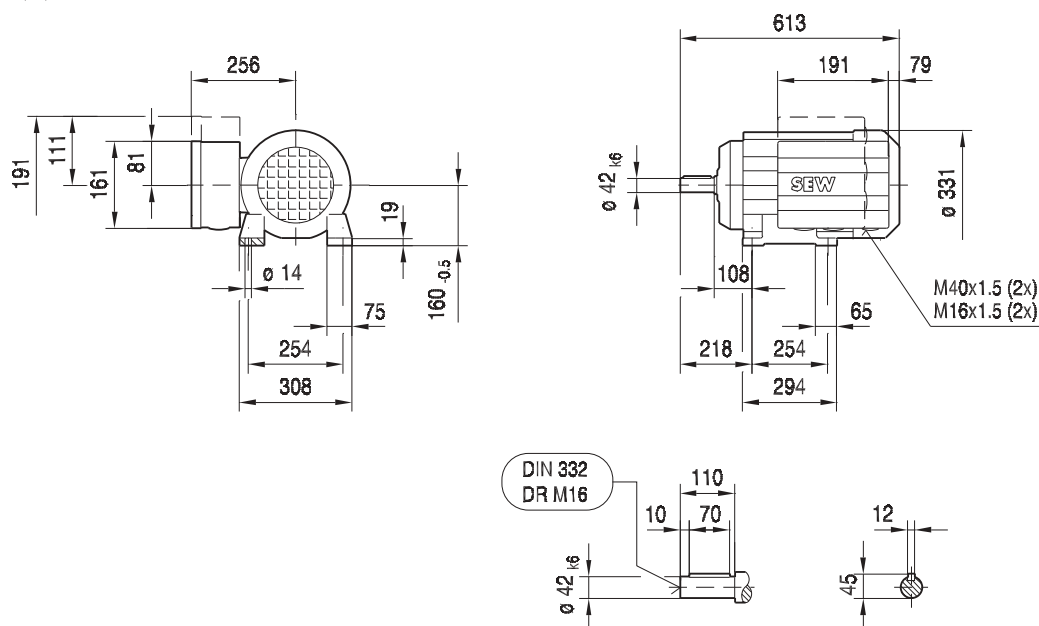
/ EV1A



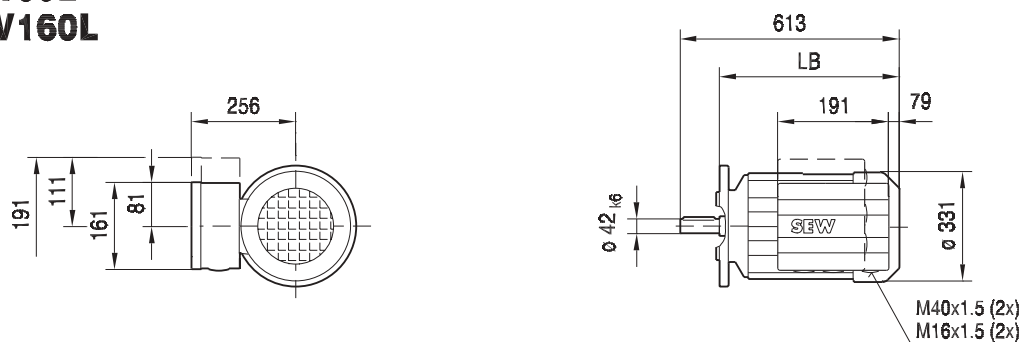


DV160L eDV160L

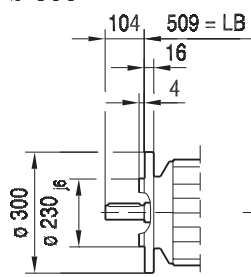
08 216 002
1 (2)



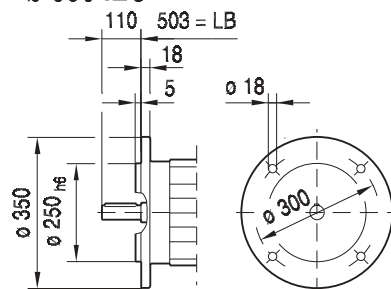
DFV160L eDFV160L



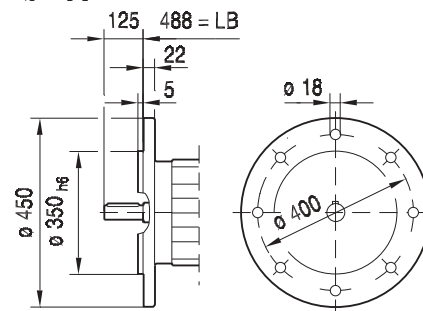
$\varnothing 300$



$\varnothing 350$ IEC



$\varnothing 450$

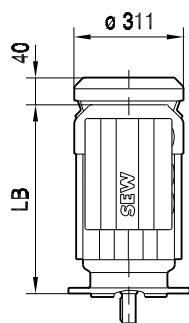




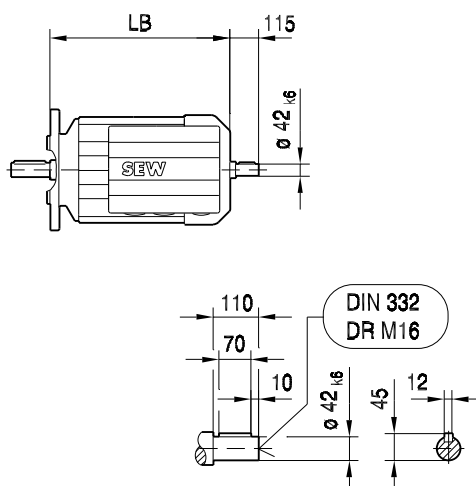
D(F)V160L

08 216 002
2 (2)

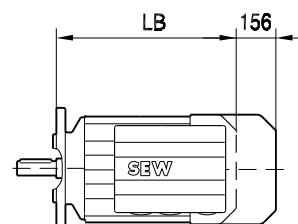
/ C



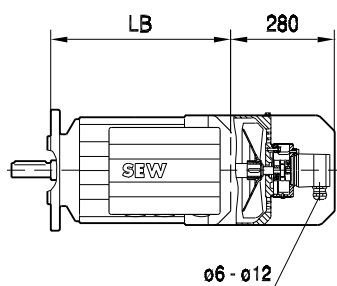
/ 2.WE



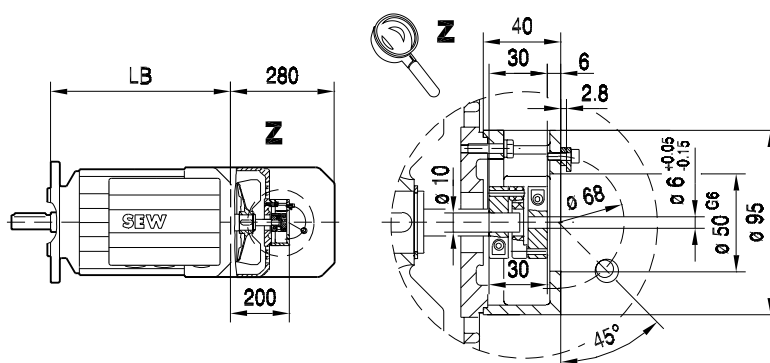
/ RS



/ EV1.



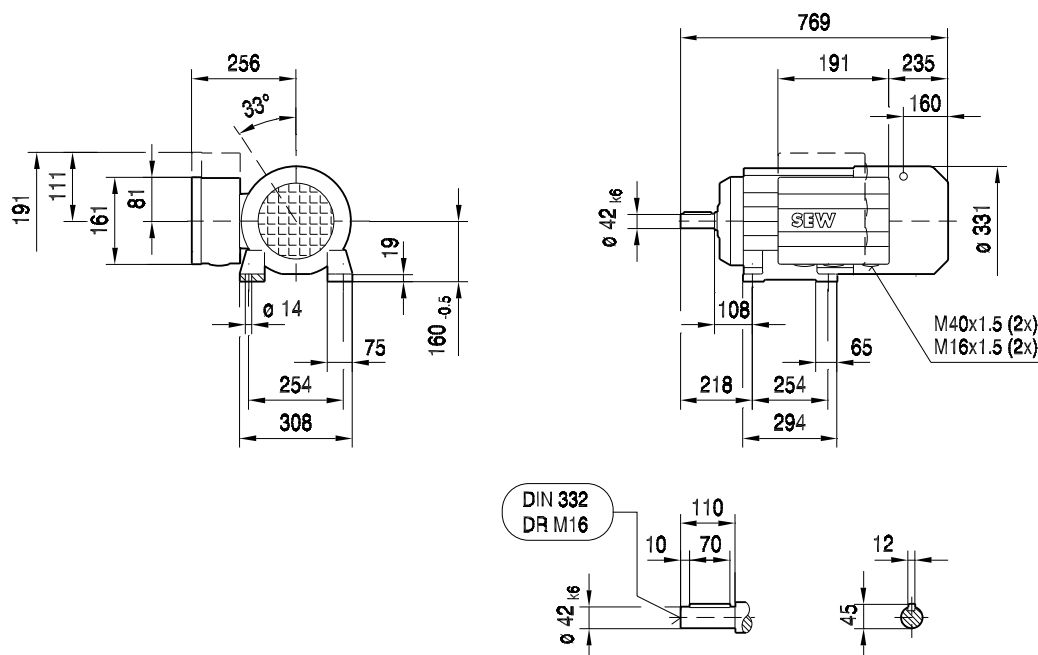
/ EV1A



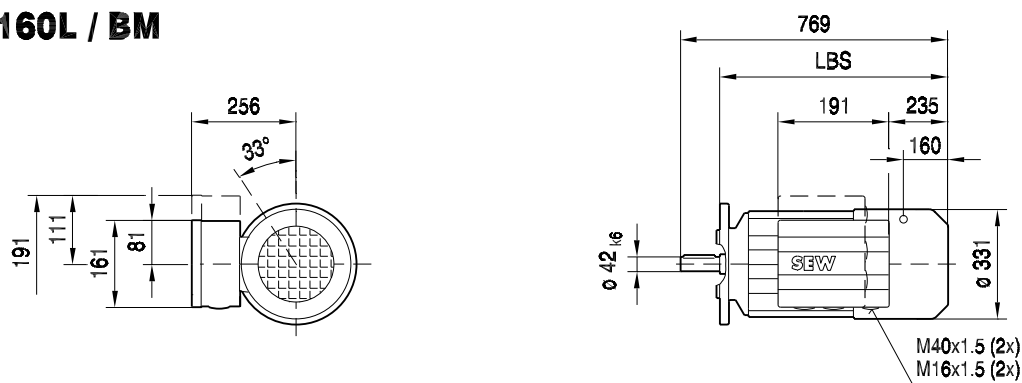


DV160L / BM

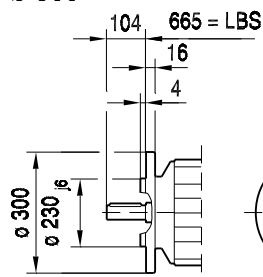
09 064 002
1 (2)



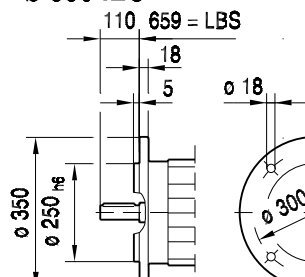
DFV160L / BM



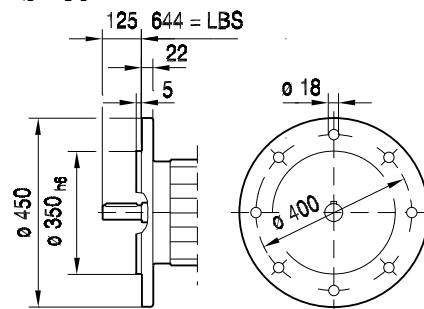
ø 300



ø 350 IEC



ø 450

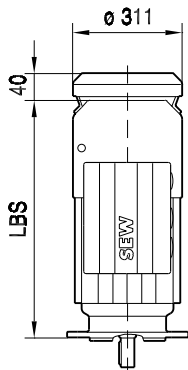




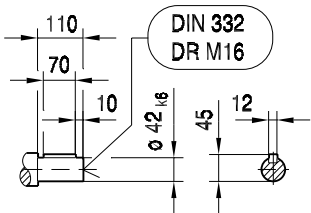
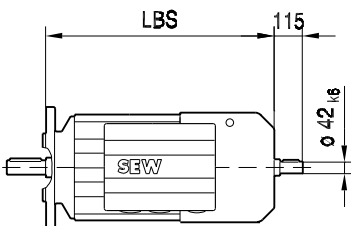
D(F)V160L / BM

09 064 002
2 (2)

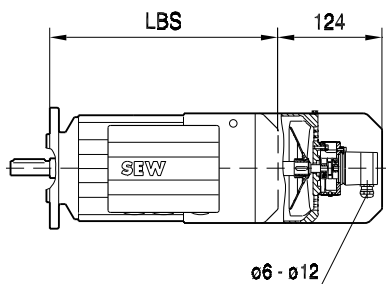
/ C



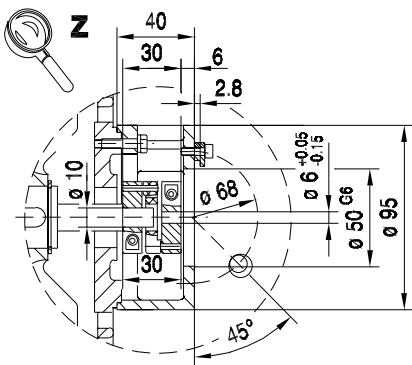
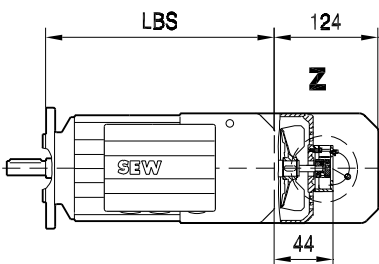
/ 2.WE



/ EV1.



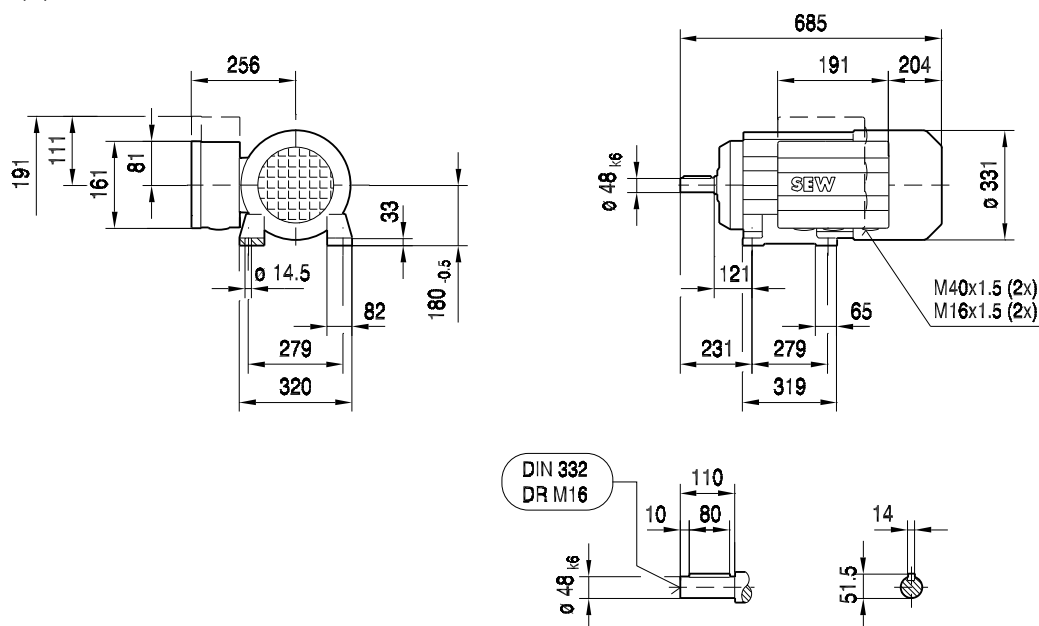
/ EV1A



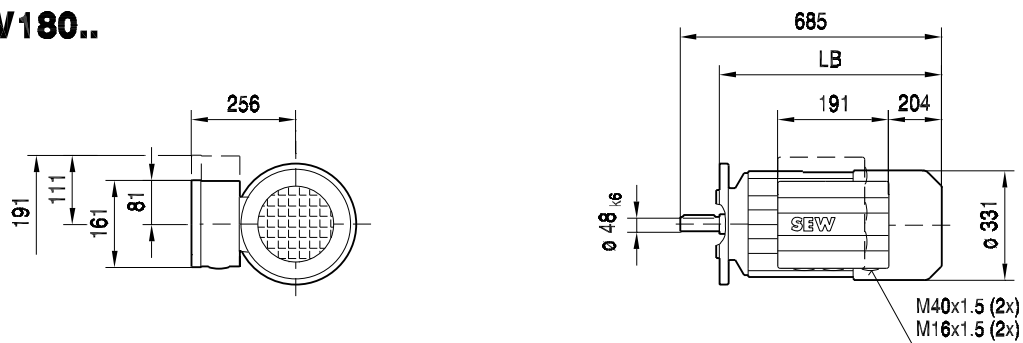


DV180.. eDV180..

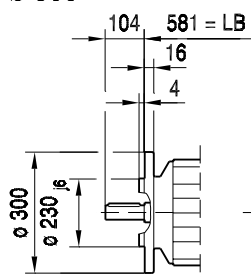
08 217 002
1 (2)



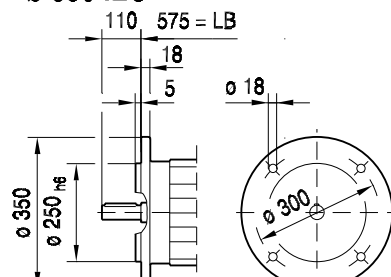
DFV180.. eDFV180..



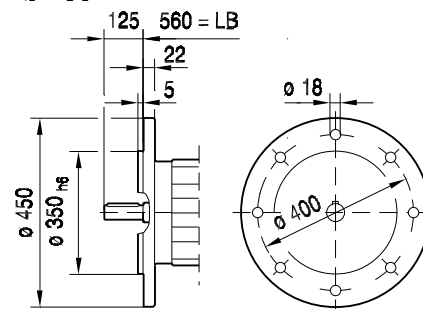
ø 300



ø 350 IEC



ø 450

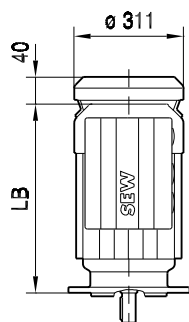




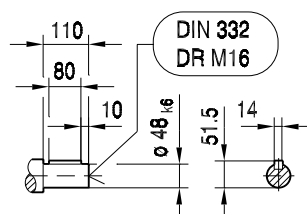
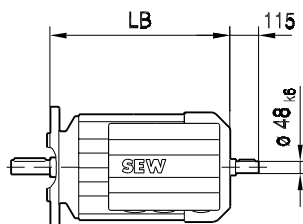
D(F)V180..

08 217 002
2 (2)

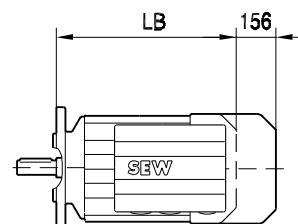
/ C



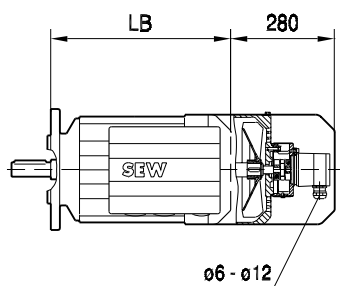
/ 2.WE



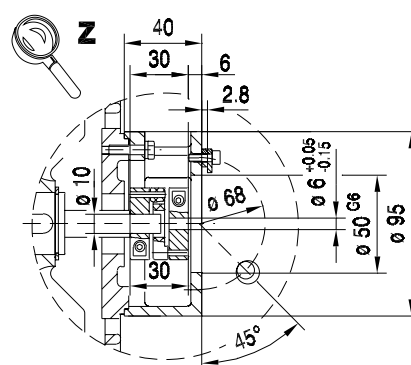
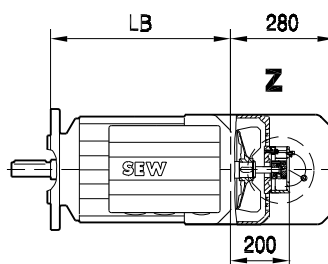
/ RS



/ EV1.



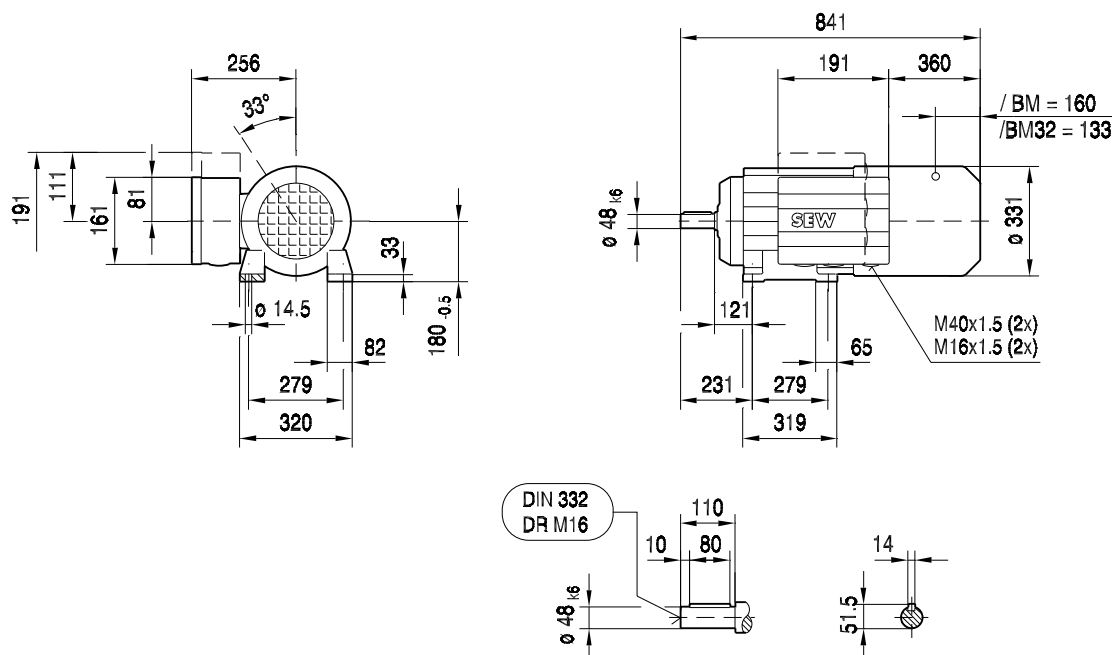
/ EV1A



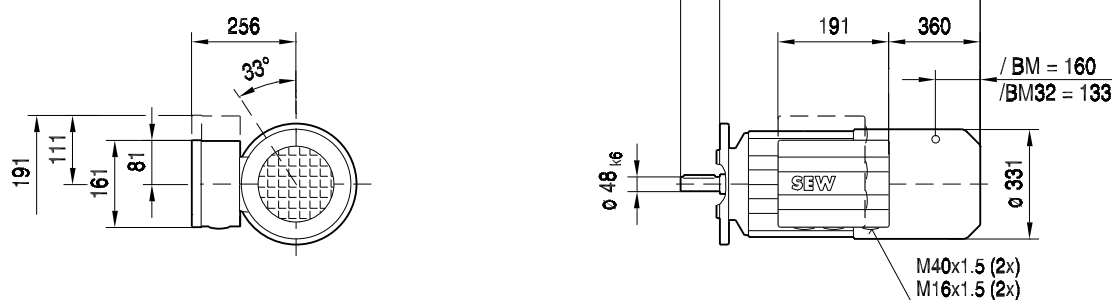


DV180.. / BM

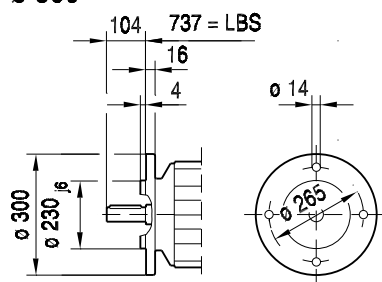
09 065 002
1 (2)



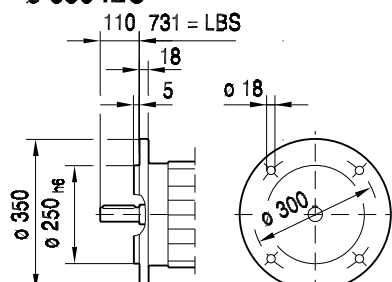
DFV180.. / BM



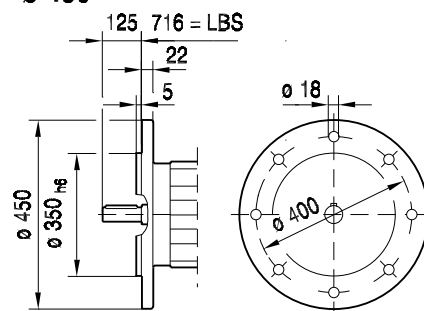
$\phi 300$



$\phi 350$ IEC



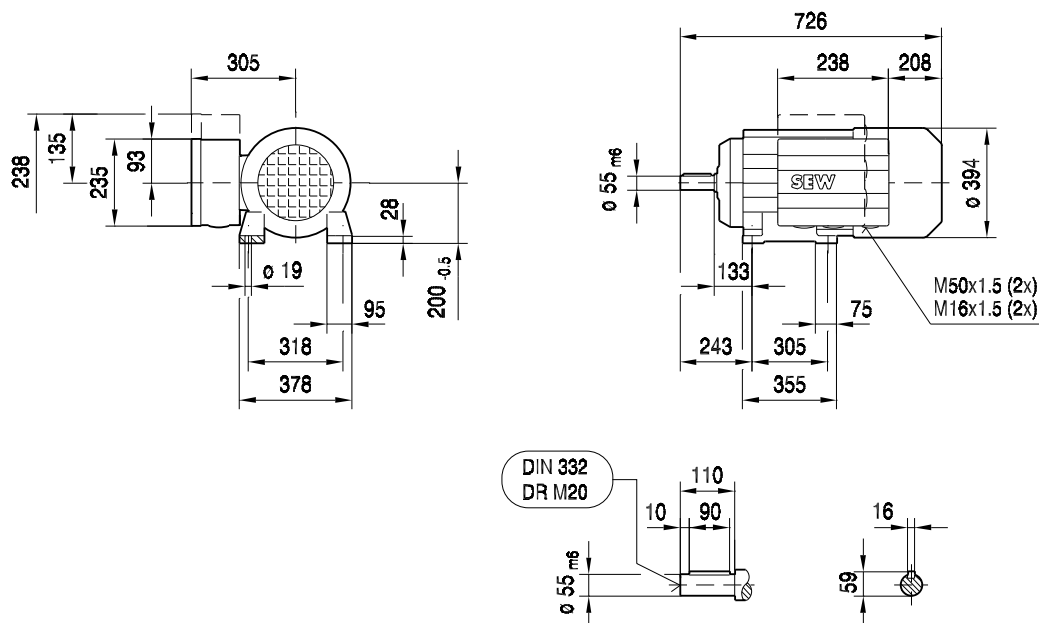
$\phi 450$



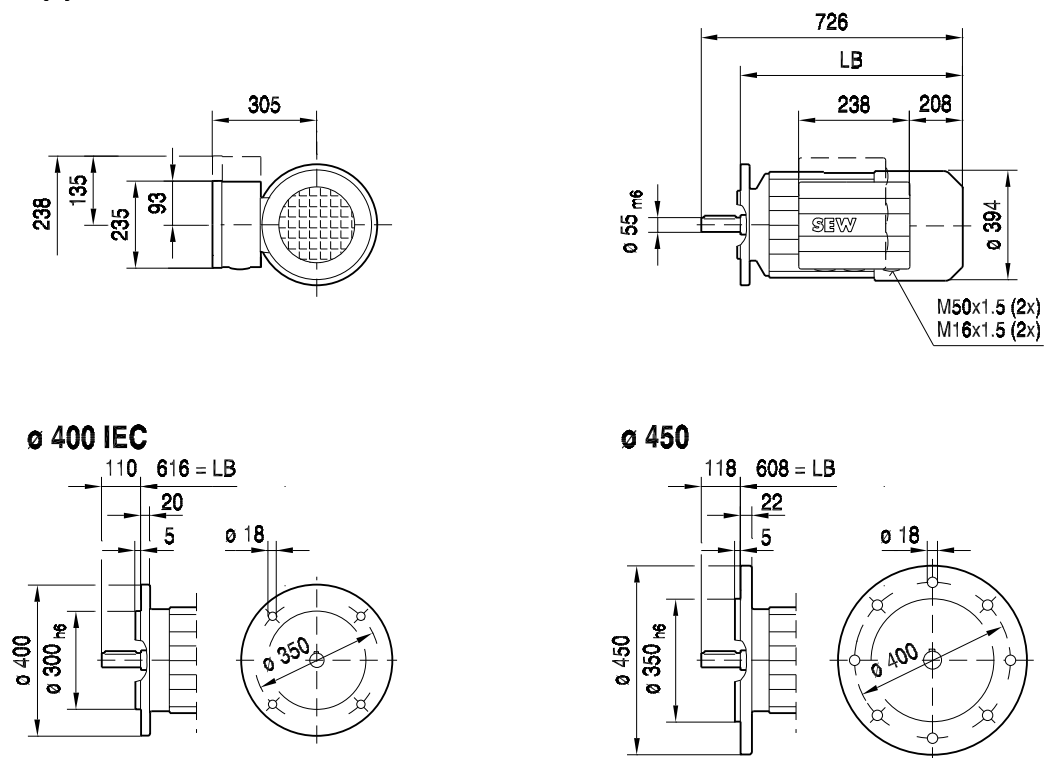


DV200..

08 218 002
1 (2)



DFV200..

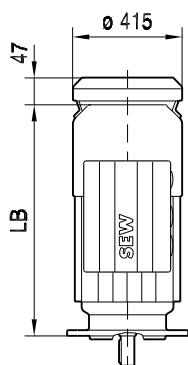




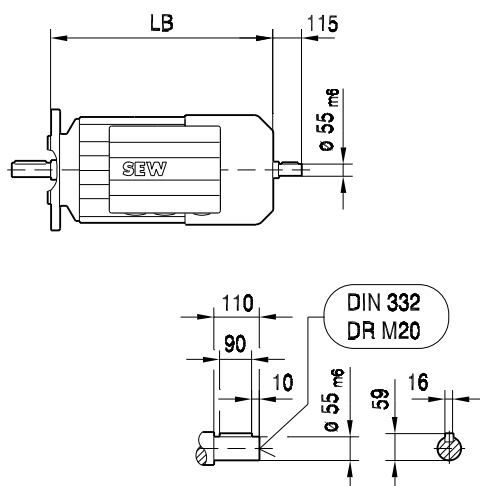
D(F)V200..

08 218 002
2 (2)

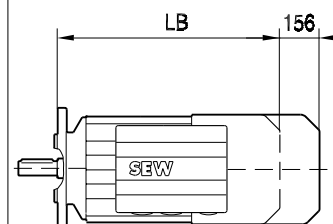
/ C



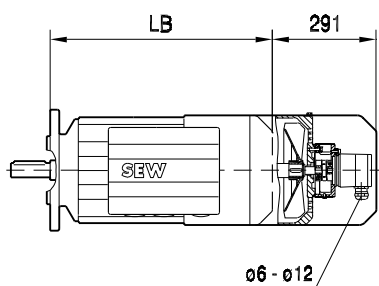
/ 2.WE



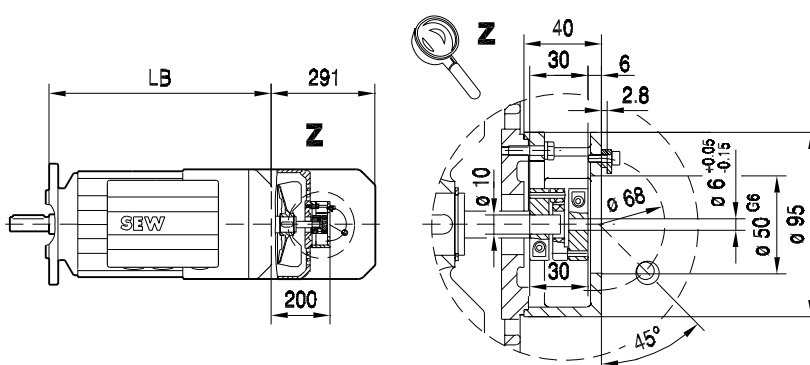
/ RS



/ EV1.



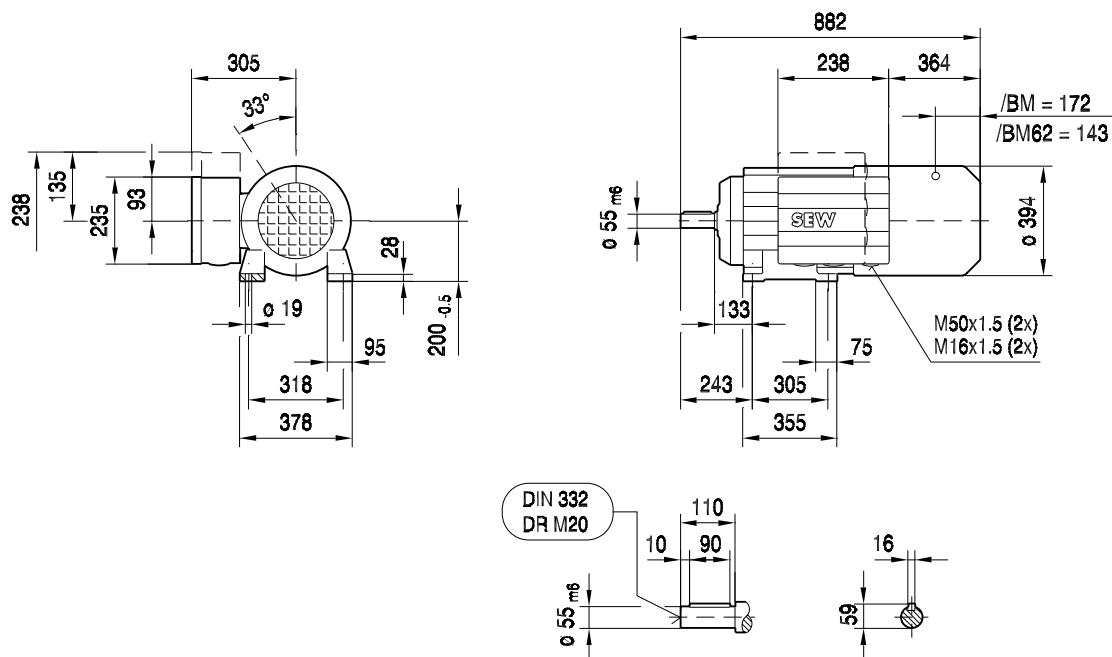
/ EV1A



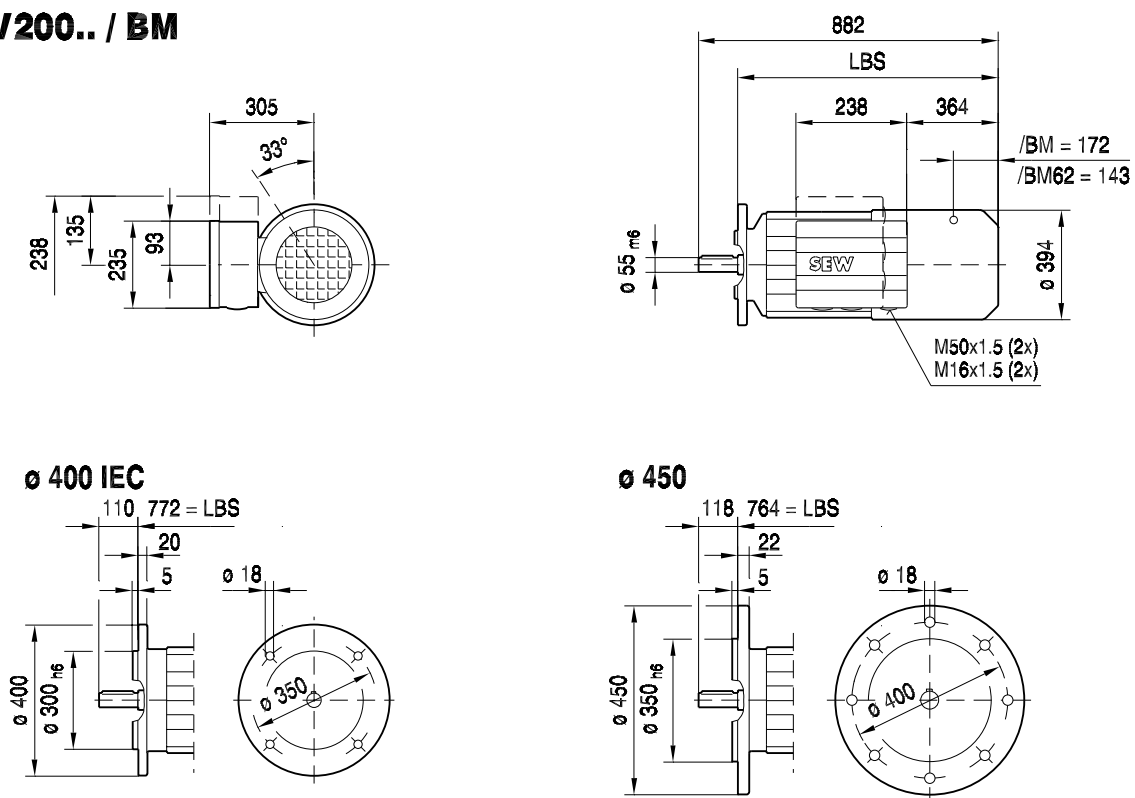


DV200.. / BM

09 066 002
1 (2)



DFV200.. / BM

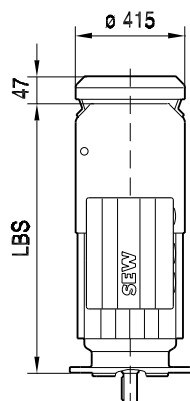




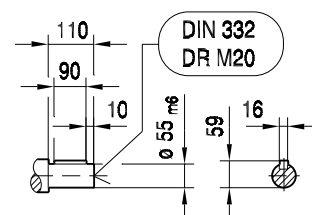
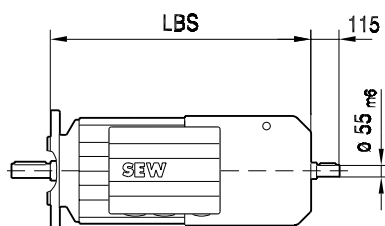
D(F)V200.. / BM

09 066 002
2 (2)

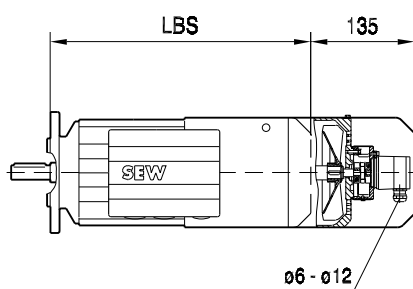
/ C



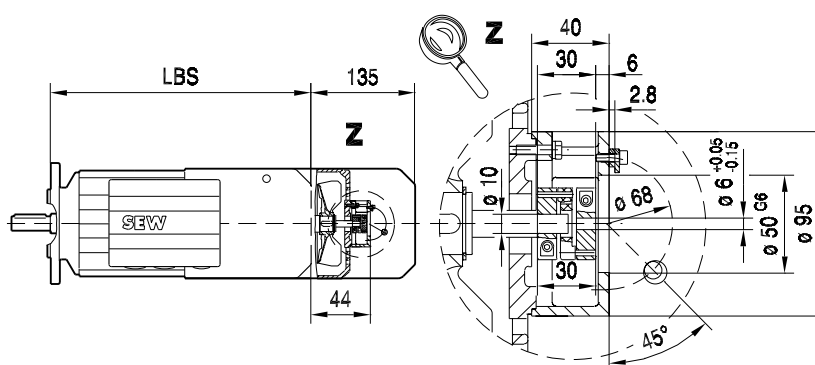
/ 2.WE



/ EV1.



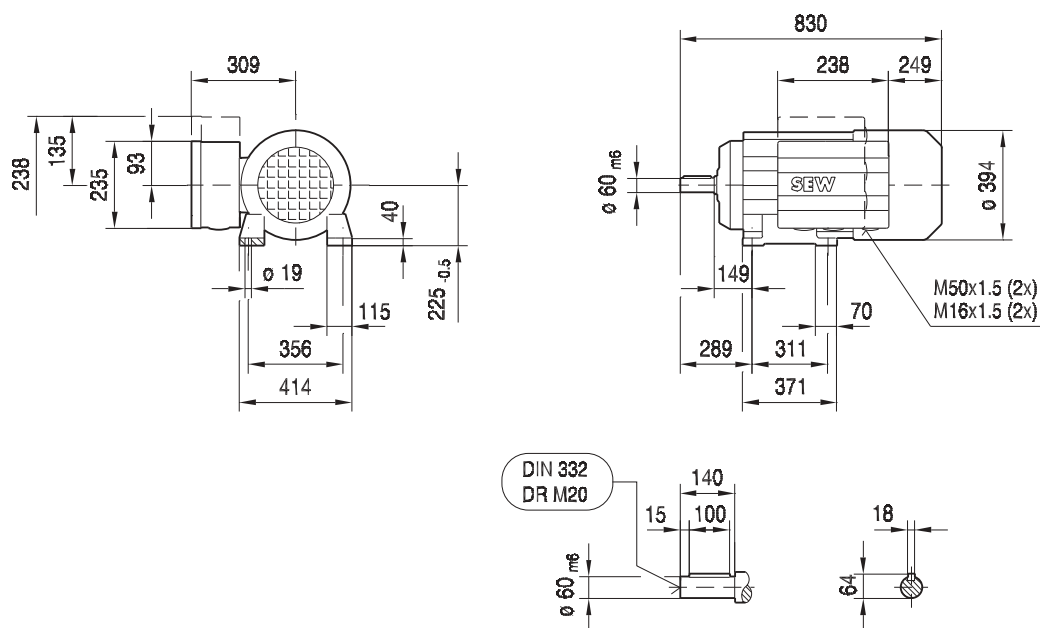
/ EV1A



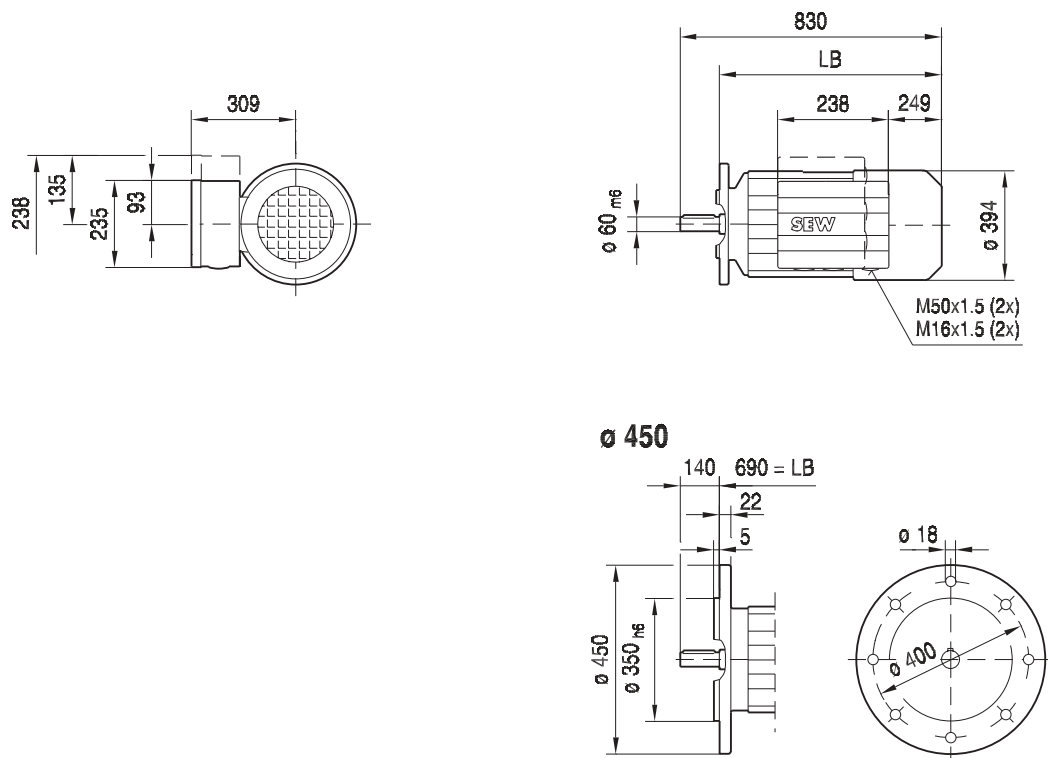


DV225..

08 219 002
1 (2)



DFV225..

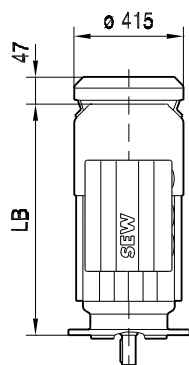




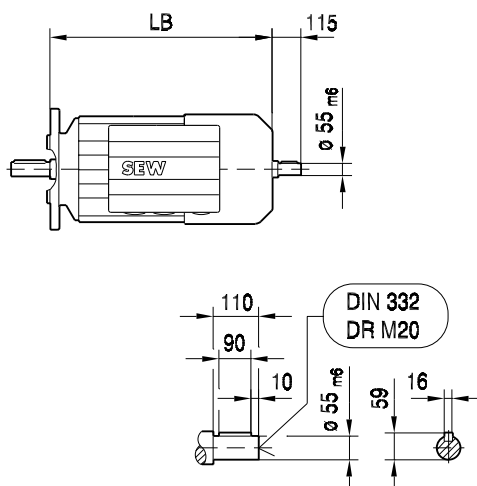
D(F)V225..

08 219 002
2 (2)

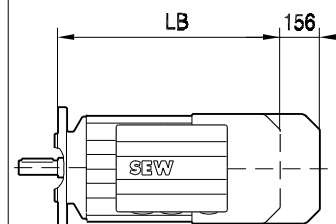
/ C



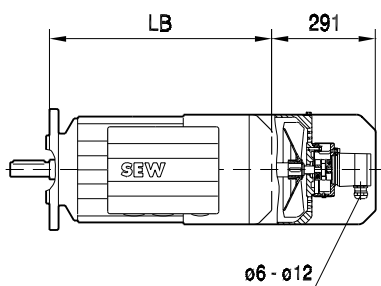
/ 2.WE



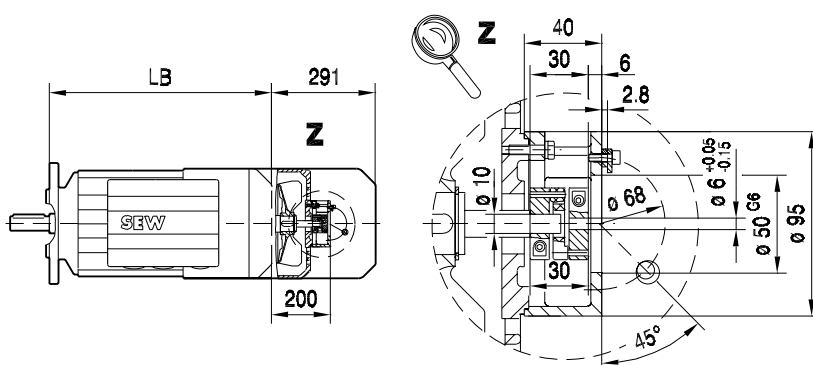
/ RS



/ EV1.



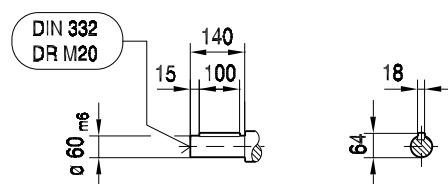
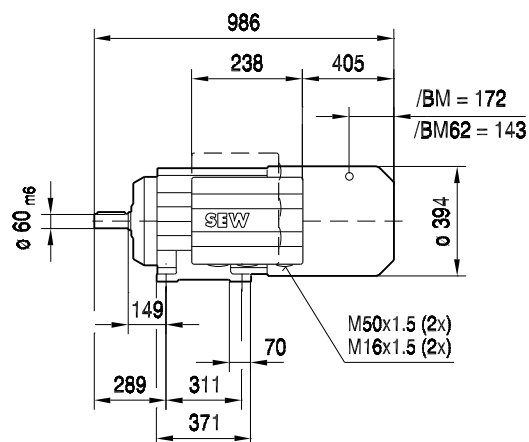
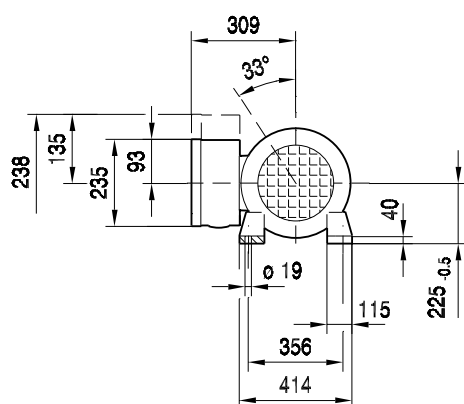
/ EV1A



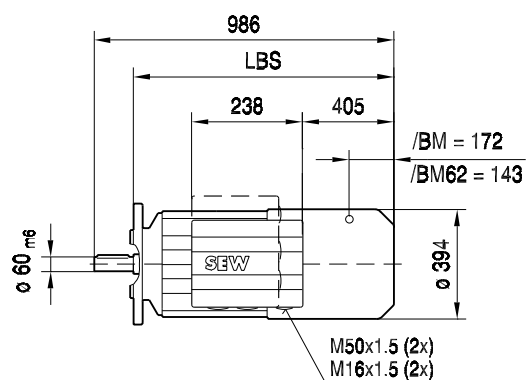
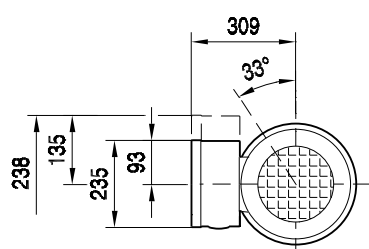


DV225.. / BM

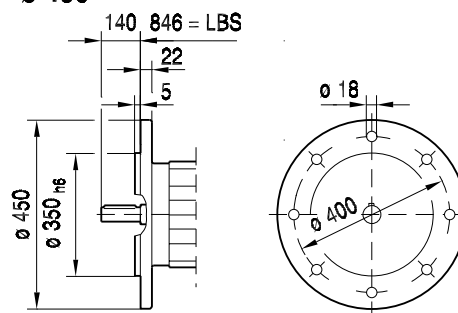
09 067 002
1 (2)



DFV225.. / BM



ø 450

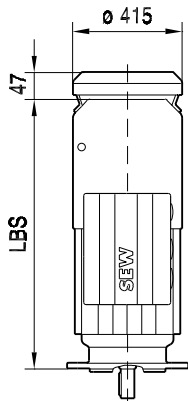




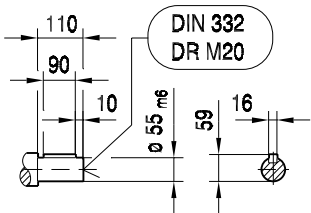
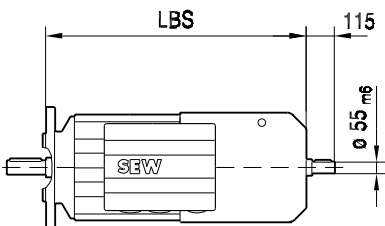
D(F)V225.. / BM

09 067 002
2 (2)

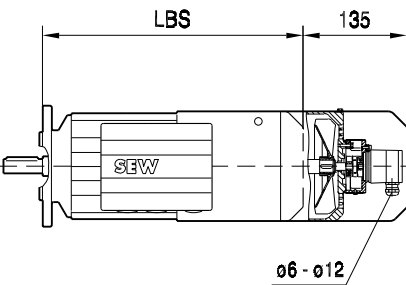
/ C



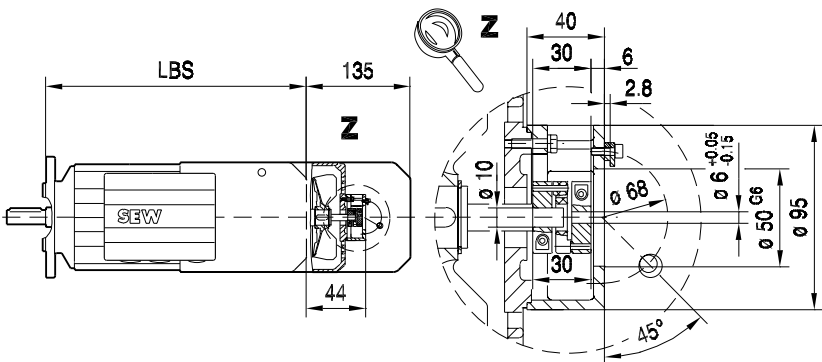
/ 2.WE



/ EV1.



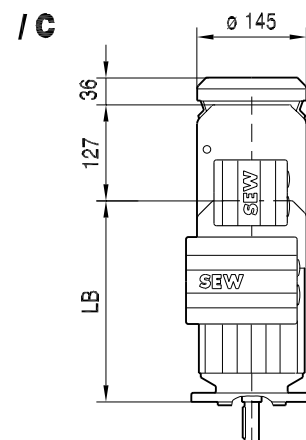
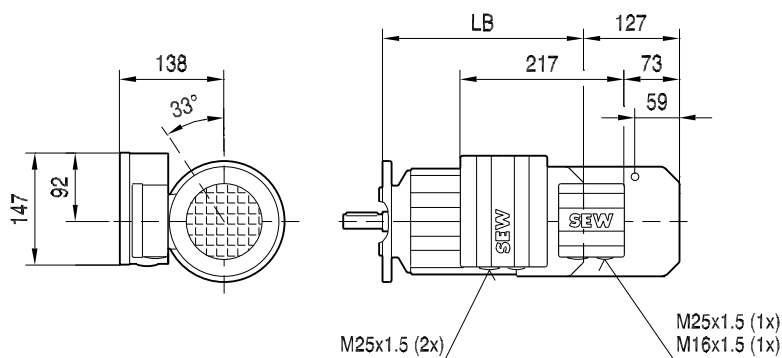
/ EV1A



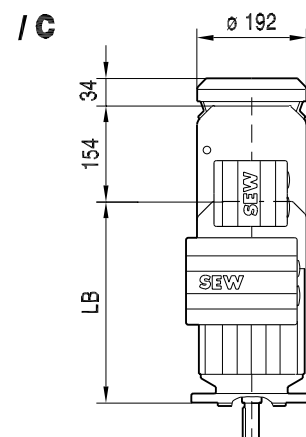
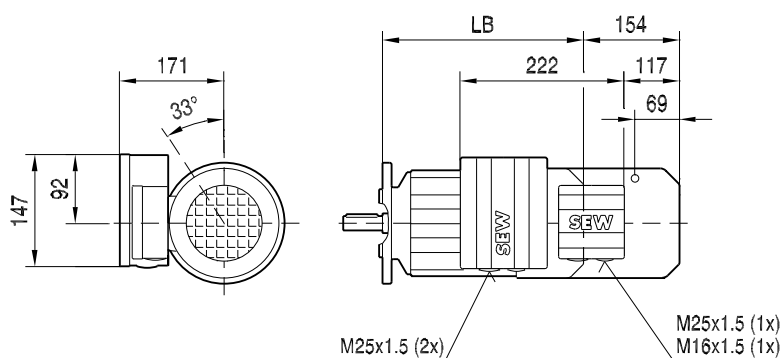


eDT71D / BC05 eDT80.. / BC05

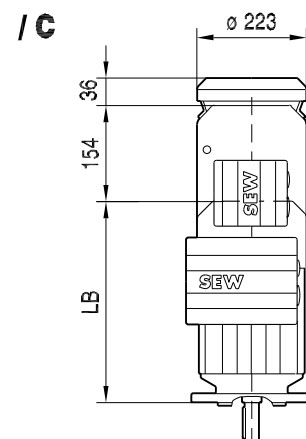
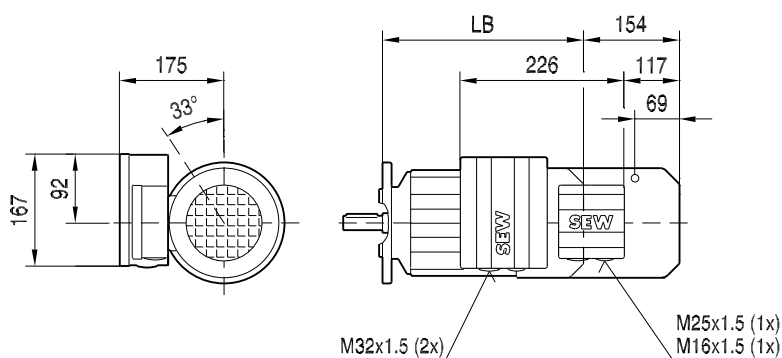
09 068 002
1 (1)



eDT90.. / BC2



eDT100.. / BC2





13.4 Technical data RS backstop

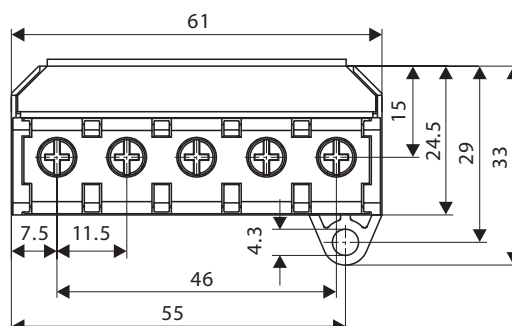
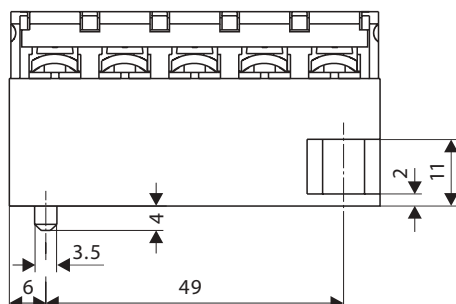
RS Backstop

Motor type	Rated locking torque [Nm]	Lift-off speed of the sprags [1/min]	Ambient temperature
DT71 ... DT80../RS	40	800	-20 °C ... +40 °C
DT90 ... DV100../RS	150	550	
DV112 ... DV132S../RS	150	550	
DV132M ... DV160M../RS	530	630	
DV160L ... DV180L../RS	800	540	
DV200 ... DV225../RS	800	540	
DV250 ... DV280../RS	2600	400	



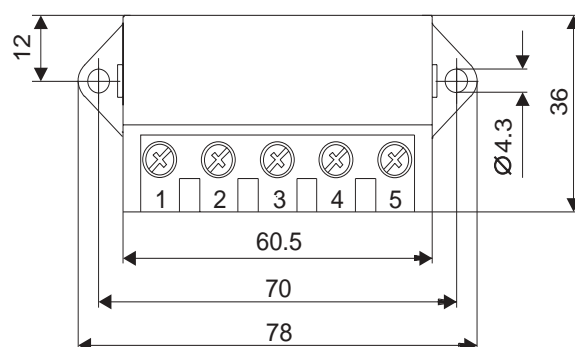
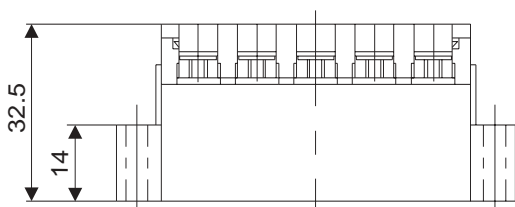
13.5 Dimensions of brake control systems

BG1.0, BG1.2, BG2.4



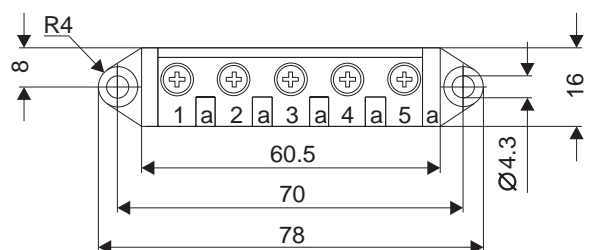
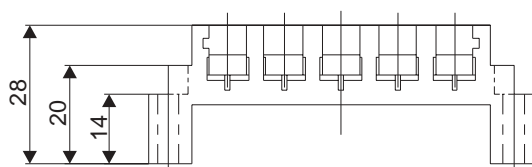
04750AXX

BG1.5, BG3, BGE, BS, BSG



01621BXX

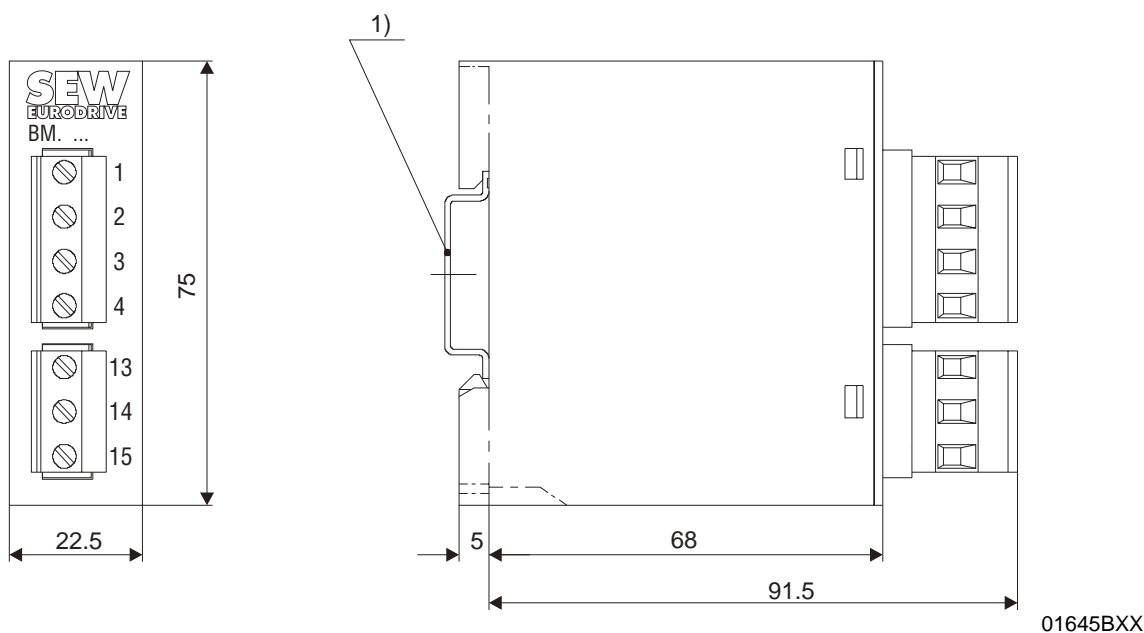
Auxiliary terminal strip For connecting the brake coil or TF/TH and strip heaters in the wiring space of the motor.



01622BXX



BMS, BME, BMH, BMP, BMK



1) Mounting rail attachment EN 50022-35-7.5

