

# Human Anatomy Model

## Assembly Guide

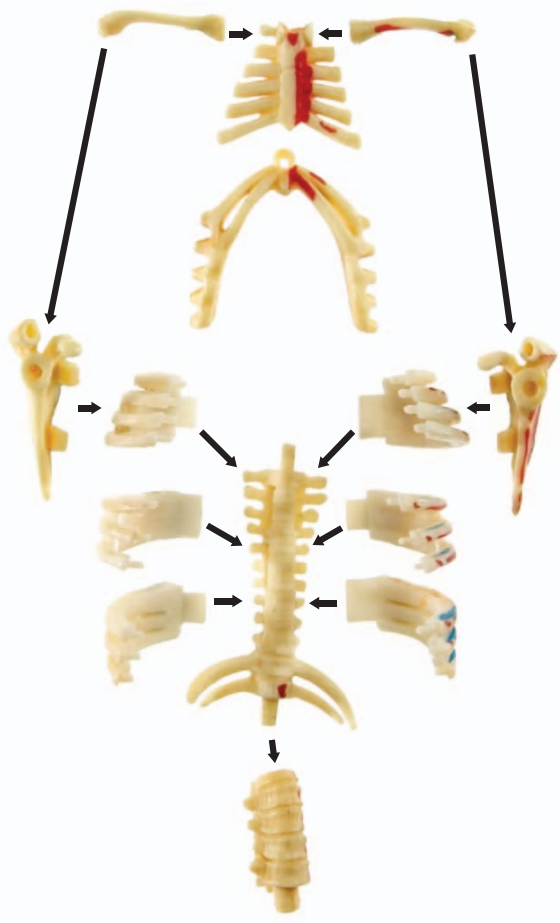
The human skeleton consists of over two hundred connecting bones that work together to give the body its shape and support. Without a skeleton the human body would be a soft, shapeless blob of muscle and organs. The skeleton not only provides the body structure, but also protects internal organs, stores essential minerals such as calcium, produces red blood cells, and connects with muscles to allow the body to move.

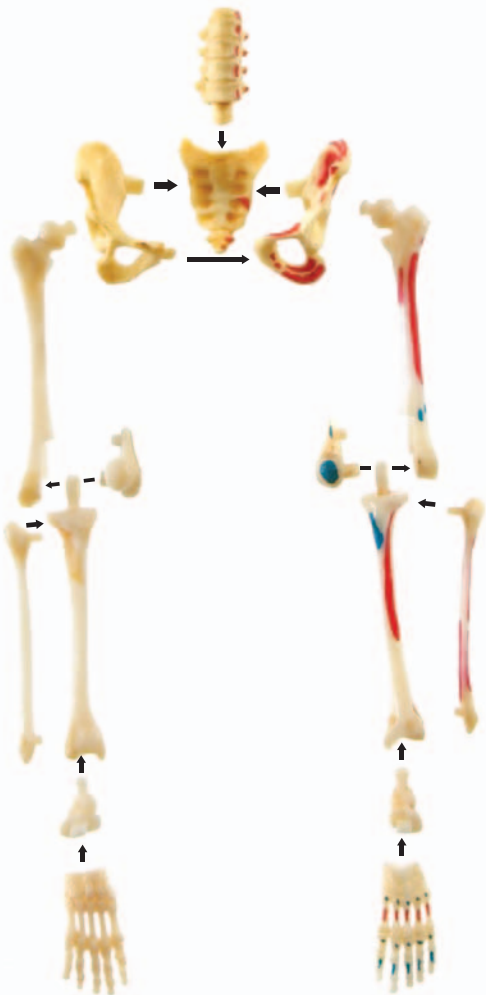
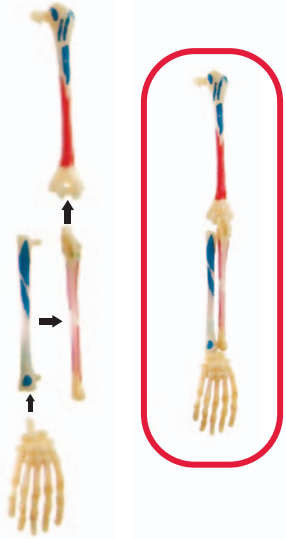
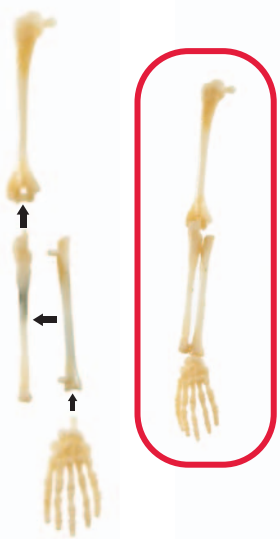
This set of forty-one pieces connects to form a human skeleton that displays the structure's major parts. The model features the following skeletal parts: skull, rib cage, humerus, spinal column, radius, ulna, hand, pelvis, femur, tibia, fibula, and foot.



# Skeleton

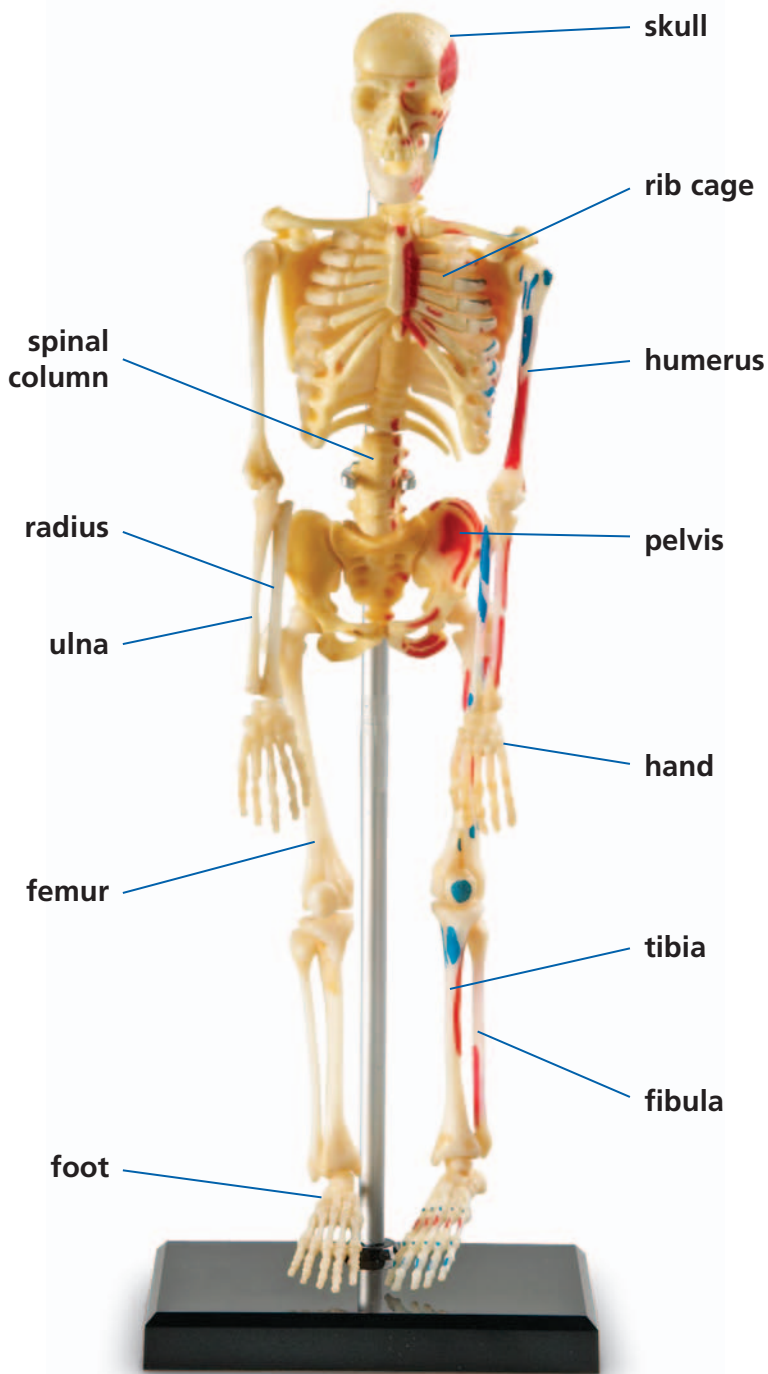
# Assembly











**skull (head)** typically consists of twenty-two bones that protect the brain from injuries and comprise the structure of the face

**rib cage** typically consists of twelve pairs of ribs that protect the internal organs, such as the heart and lungs, from injury

**humerus (upper arm)** single long bone in the arm between the shoulder and lower arm

**spinal column** contains the spinal cord. Comprised of thirty-three flexible vertebrae allow movement of the back and neck.

**radius** one of two bones in the lower arm; connects the lower arm to the wrist

**ulna** one of two bones in the lower arm; connects the lower arm to the humerus and creates the point of the elbow

**hand** typically consists of twenty-seven bones that allow flexibility of the fingers and thumb

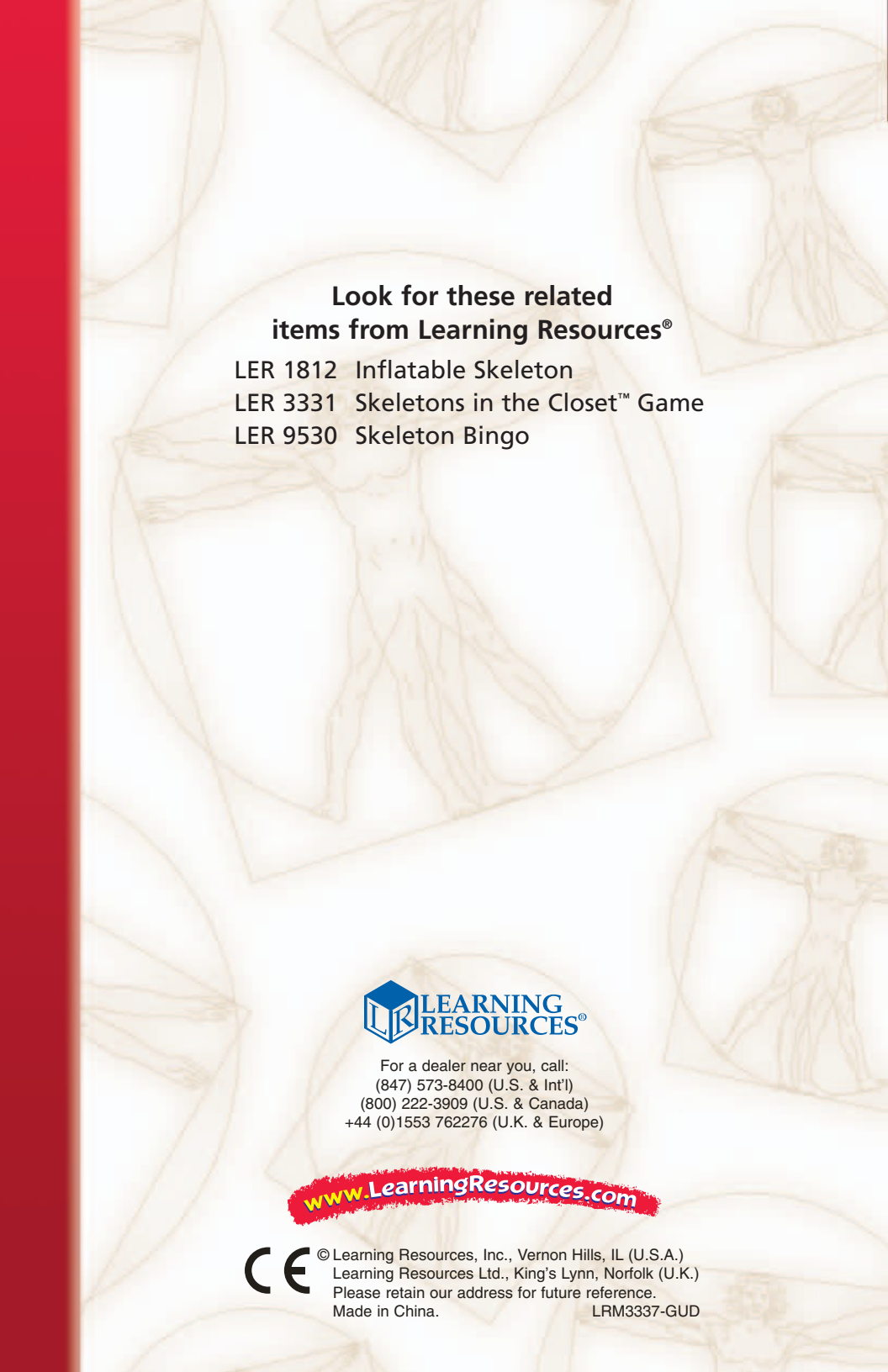
**pelvis (hips)** supports the weight of the upper body

**femur (upper leg)** longest and largest bone in the skeletal system

**tibia** larger of the two lower leg bones; unlike the male tibia, the female tibia is not parallel to the fibula

**fibula** smaller of the two lower leg bones; helps control movement of the ankle

**foot** typically consists of twenty-six bones that coordinate balance and mobility

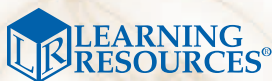


**Look for these related  
items from Learning Resources®**

LER 1812 Inflatable Skeleton


LER 3331 Skeletons in the Closet™ Game

LER 9530 Skeleton Bingo



For a dealer near you, call:  
(847) 573-8400 (U.S. & Int'l)  
(800) 222-3909 (U.S. & Canada)  
+44 (0)1553 762276 (U.K. & Europe)

[www.LearningResources.com](http://www.LearningResources.com)

 © Learning Resources, Inc., Vernon Hills, IL (U.S.A.)  
Learning Resources Ltd., King's Lynn, Norfolk (U.K.)  
Please retain our address for future reference.  
Made in China. LRM3337-GUD