

# Notification Appliances

## 'SL' Series – Horns | Strobes | Horn-Strobes Applications : Indoor, Wall-Only

### Architect & Engineer Specifications

- ❑ Sophisticated series of notification appliances that meets fire-industry codes and regulations for commercial-building applications
- ❑ Compatible with the Siemens 50-point, 252-point and 504-point addressable fire alarm control panels (FACPs), and with:
  - Siemens Modular FACPs
  - Siemens PAD-series of NAC extenders
  - FireFinder® XLS / XLSV FACPs
  - Siemens dual-sync control (DSC) modules
- ❑ Innovative LED strobe technology provides an energy-efficient means for a significantly reduced current draw
  - Capability to have existing Xenon and new LED strobes in the same field-of-view
  - Fewer power supplies required, smaller wire gage, reduced wire runs
- ❑ Straightforward installation coupled with compact, modern design
  - No visible mounting screws
  - Manual (index finger) slide-setting adjustor
  - Four (4) field-selectable settings in one (1) device: 15cd | 30cd | 75cd | 110cd
- ❑ Faceplates ship in four (4) distinctive types:
  - 'FIRE' | 'ALERT' | 'AGENT' | (blank)
- ❑ Two (2) audible settings in each notification appliance
  - Temporal or steady horn output
  - High or Low setting
- ❑ UL (2034 | 1971 | 464) and ULC Listed (ULC-S525 | - S526)
- ❑ ADA | NFPA | FCC | ANSI | OSHA compliant

### Product Overview

Formed as the 'SL'-series, Siemens is now offering horns, strobes, and horn-strobes with LED based strobes to its notification-appliances portfolio. With the 'SL'-series, Siemens offers a full range of products with low and high candela settings that makes these sophisticated notification appliances ideal for new installs and retrofit applications.

Innovative light-emitting diode (LED) strobe technology provides an energy-efficient means for a significantly reduced current draw.

The strobe portion of these appliances meets the 20 millisecond light-pulse-duration requirements of the 2016 edition of NFPA 72. This feature allows existing Xenon and the new LED devices to be used in the same field-of-view.

In a single device, the 'SL'-series can provide alarm-signaling tones for dual applications. All strobe models in the series feature multi-Candela settings (15 | 30 | 75 | 110cd) on a single appliance.

Additionally, there are two (2) modes of operation for the audible portion of these notification appliances:

- T3 (coded)
- Continuous

The 'SL'-series of horns, strobes and horn-strobes devices are produced in a sleek, modern design. Its single-gang form factor provides high-quality energy efficiency in an aesthetically pleasing, low-profile design that is consistent to the look of the interior composition of the building application.

The 'SL'-series is apt for indoor wall-mount applications. The Model 'SLH'-series horn appliances work in either 12V or 24VDC, whereas the Series 'SLSW' and 'SLHSW' strobe and horn-strobe devices are specifically for 24V operation.



**Model SLHR-N**  
Horn

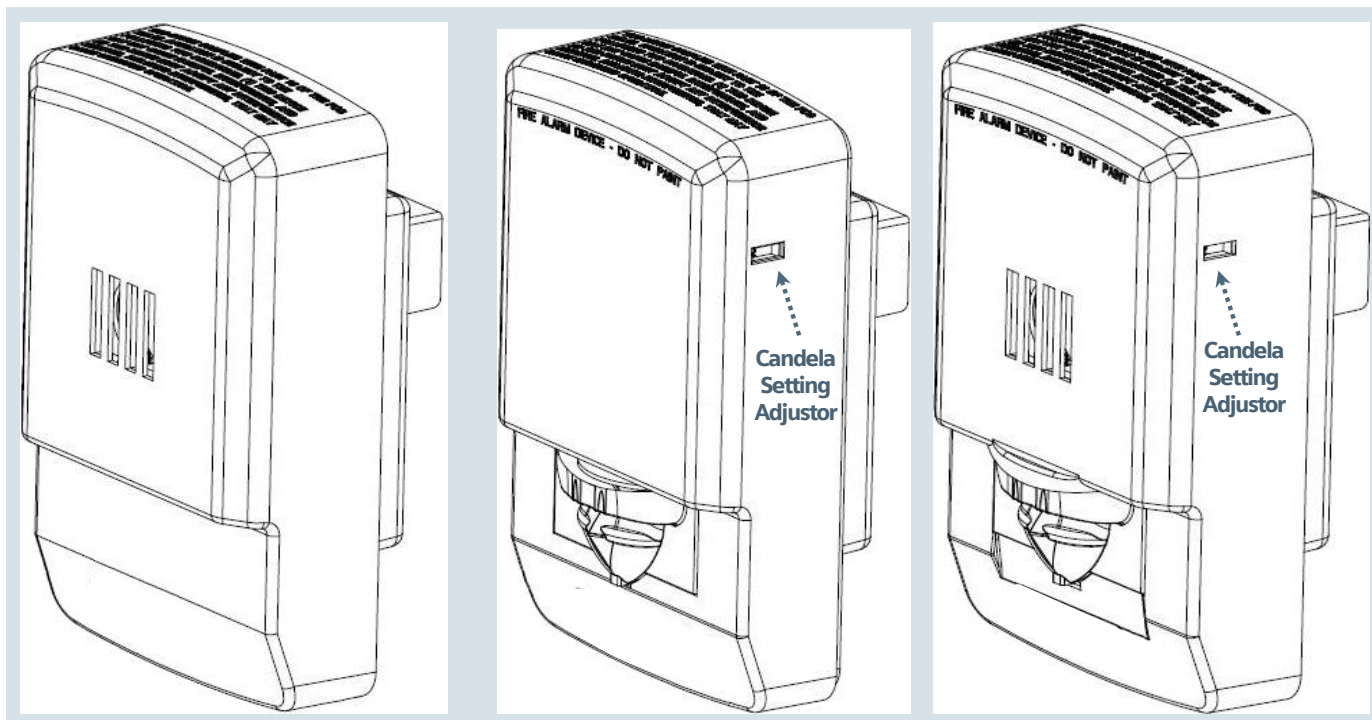


**Model SLSWW-ALA**  
Strobe



**Model SLHSWR-F**  
Horn-Strobe





**`SLHW' Series**  
**Horn**

**TRIMPLATE DIMENSIONS:**  
5.25 inches (13.34 cm.) {H};  
4.58 inches (11.6 cm.) {W};  
0.32 inches (0.81 cm.) {D}

**`SLSW' Series**  
**Strobe**

**MOUNTING OPTIONS INCLUDE:**  
- Model SLSBBR or SLSBBW to any single-gang backbox  
- 4" (10.2 cm.) square backboxes with the Model SLESB-KIT-R or SLESB-KIT-W adapter kit

**`SLHSW' Series**  
**Horn-Strobe**

## Specifications

In terms of composition and functionality, Models `SLHW'-series, `SLSW'-series, and `SLHSW'-series provide added value to the installer for the types of applications for operation:

- Compact | sleek | low-profile design
- Comprehensive feature list
- Convenient mounting options
- Easy-to-adjust selection-slider switch for Candela settings
  - No tools required for setting changes
  - Multi-level settings: 15cd | 30cd | 75cd | 110cd
- High and Low audible outputs
- Reduced current draw, via cutting-edge LED technology

The LED portions of the Siemens `SL'-series of strobes and horn-strobes meet the 20 millisecond light-pulse-duration requirements of the 2016 edition of NFPA 72. By meeting this latest requirement, existing Xenon as well as the new LED-technology devices can now be in the same field-of-view.

The horn, strobe and horn-strobes in this Siemens `SL'-series of notification appliances have received UL / ULC Listed status by attaining compatible testing standards with all of the Siemens fire-alarm control panels (FACPs) and accessories that have been determined to be aligned with existing Siemens strobe-based appliances.

This would include the following existing model-types: `CH' | `HS' | `MTH' | `S-HQ' | `SA' | `SE' | `SEF' | `SET' | `ST' | `STH' | `ZR' and `ZH' Series notification appliances. The regulatory listing also includes the capability for installing the Siemens `SL'-series LED-based strobes in the same notification zone and field-of-view with any existing Siemens Notification Appliance Xenon-based strobes.

All types of these horns, strobes and horn-strobes are UL Listed (for indoor use under Standard 1971 and 464), as well as ULC-S525 | ULC-S526 Listed. The Siemens `SL'-series sounder-strobes also have ADA | RoHS and ICES approval.

## Technical Data

### Wall-Mount | Horn-Strobes | Output Current Draw

Current Ratings (HIGH dB   in Amps) 16.0 – 33.0VDC					
MODEL 'SLHSW'	Setting	15cd	30cd	75cd	110cd
SERIES: <sup>A</sup>	Code 3	0.034	0.046	0.105	0.214
	Continuous	0.042	0.052	0.110	0.217

### Wall-Mount | Horn-Strobes | Output Current Draw

Current Ratings (LOW dB   in Amps) 16.0 – 33.0VDC					
MODEL 'SLHSW'	Setting	15cd	30cd	75cd	110cd
SERIES: <sup>A</sup>	Code 3	0.032	0.042	0.102	0.213
	Continuous	0.036	0.044	0.104	0.216

### Wall-Mount | Horn-Only | Output Current Draw

Current Ratings (Code 3   in Amps) RMS Current @ 24VDC			
MODEL 'SLHW'	Regulated Voltage Range	High	Low
SERIES: <sup>A</sup>	8.0 – 17.50 VDC	0.024	0.018
	16.0 – 33.0 VDC	0.030	0.022

### Wall-Mount | Strobe-Only | Output Current Draw

Current Ratings (Code 3   in Amps) RMS Current @ 24VDC					
MODEL 'SLSW'	Regulated Voltage Range	15cd	30cd	75cd	110cd
SERIES: <sup>A</sup>	16.0 – 33.0 VDC	0.030	0.040	0.102	0.201

### Wall Mount | Horn | Output Ratings (UL)

UL Sound Output Ratings (dBA) Reverberant per UL464 @ 10 feet						
MODEL 'SLHW'– and – 'SLHSW'	Volume	SLHW @ 12VDC			SLHW -and- SLHSW @ 24VDC	
		8.0V	12.0V	17.5V	16.0V	24.0V
SERIES: <sup>A</sup>	Code 3   High dBA	75	80	83	76	79
	Code 3   Low dBA	73	77	80	75	77
	Continuous   High dBA	80	84	87	80	83
	Continuous   Low dBA	78	79	84	78	81

### Wall Mount | Horn | Output Ratings (ULC)

ULC Sound Output Ratings (dBA) Anechoic per ULCS525-16 @ 3.05 meters						
MODEL 'SLHW'– and – 'SLHSW'	Volume	SLHW @ 12VDC			SLHW -and- SLHSW @ 24VDC	
		8.0V	12.0V	17.5V	16.0V	24.0V
SERIES: <sup>A</sup>	Code 3   High dBA	85	89	92	91	95
	Code 3   Low dBA	79	84	87	86	90
	Continuous   High dBA	85	89	92	91	94
	Continuous   Low dBA	79	84	87	86	90

<sup>A</sup>RMS current ratings are per UL maximum RMS method.  
UL max current rating is the maximum RMS current within the listed voltage range (16 - 33V for 24V units)

<sup>A</sup> For audible appliances, the max current is usually at the maximum listed voltage (16 - 33V for 24V units)

<sup>A</sup> For unfiltered FWR ratings, see installation instructions

### GENERAL NOTES:

1. Strobes are designed to flash at 1-flash-per-second minimum over their "Regulated Voltage Range."
2. NFPA-72 specifies a flash rate of 1-to-2 flashes-per-second, and guidelines for the Americans with Disabilities Act (ADA) specify a flash rate of 1-to-3 flashes-per-second.
3. All Candela ratings represent minimum effective Strobe intensity based on UL 1971.

## Technical Data

### General Properties

OPERATING TEMPERATURE:	MODEL 'SL'-series
	<ul style="list-style-type: none"> <li>32°F (0°C) to 122°F (50°C)</li> <li>for indoor-applications' use only</li> </ul>
RELATIVE HUMIDITY:	93%, maximum
OPERATING VOLTAGE RANGES:	<ul style="list-style-type: none"> <li>12 VDC / VFWR → 8 - 17.5 VDC / VFWR;</li> <li>24 VDC / VFWR → 16 - 33 VDC/VFWR (12 VDC for Model SLHW only)</li> </ul>
STROBE OUTPUT RATING:	<ul style="list-style-type: none"> <li>UL 1971, ULC-S526</li> <li>Field-selectable 15cd   30cd   75cd   110cd Candela outputs</li> </ul>
STROBE FLASH RATE:	Strobes are designed to flash at one-flash-per-second
STROBE SYNCHRONIZATION:	<ul style="list-style-type: none"> <li>all Siemens addressable panels</li> <li>Siemens PAD-series NAC extenders</li> <li>Siemens dual-sync (DSC) modules, which provide the unique Siemens proprietary synchronization protocol</li> </ul>
TEMPORAL PATTERN:	<ul style="list-style-type: none"> <li>Continuous</li> <li>Code 3 (1/2 second on, 1/2 second off; then 1/2 second on, 1/2 second off; followed by 1/2 second on, 1-1/2 second off and repeat)</li> </ul> <p><b>NOTES:</b> The Code 3 pattern is specified by ANSI and NFPA 72 for Standard Emergency Evacuation Signaling.</p>

### Physical Properties

MATERIAL:	MODEL 'SL'-series								
	<ul style="list-style-type: none"> <li>White-or-red textured, ultraviolet (UV) stabilized, colored impregnated engineered plastic</li> <li>Exceeds 94V-0 UL flammability rating</li> </ul>								
WEIGHT:	0.35 Lbs. (0.16 Kg.)								
LENS TYPE:	LED strobe situated in a rugged Lexan lens								
DIMENSIONS:	<table> <tr> <th>Actual Appliance:</th><th>Single-Gang Trim Plate:</th></tr> <tr> <td>4.53" (11.5 cm.) { H };</td><td>5.25" (13.3 cm.) { H };</td></tr> <tr> <td>2.76" (7.0 cm.) { W };</td><td>4.58" (11.6 cm.) { W };</td></tr> <tr> <td>1.27" (3.23 cm.) { D }</td><td>0.32" (0.81 cm.) { D }</td></tr> </table>	Actual Appliance:	Single-Gang Trim Plate:	4.53" (11.5 cm.) { H };	5.25" (13.3 cm.) { H };	2.76" (7.0 cm.) { W };	4.58" (11.6 cm.) { W };	1.27" (3.23 cm.) { D }	0.32" (0.81 cm.) { D }
Actual Appliance:	Single-Gang Trim Plate:								
4.53" (11.5 cm.) { H };	5.25" (13.3 cm.) { H };								
2.76" (7.0 cm.) { W };	4.58" (11.6 cm.) { W };								
1.27" (3.23 cm.) { D }	0.32" (0.81 cm.) { D }								

### Mounting and Wiring Properties

INDOOR MOUNTING:	MODEL 'SL'-series
	<ul style="list-style-type: none"> <li>Wall-mount applications</li> <li>Single-gang (Model SLESB) backboxes or to 4" (10.2 cm.) square with Model SLESB-KIT-R or SLESB-KIT-W adapter kit</li> </ul>
WIRING TYPE:	#12 – #18, American Wire Gauge (AWG)

## Details for Ordering

MODEL	PART NUMBER	APPLIANCE TYPE	UL	ULC	MOUNTING TYPE	STROBE TYPE	FACEPLATE COLOR	FACEPLATE LETTERING
SLHWR-N	S54329-F23-A1	Horn	✓	✓	WALL	– None –	RED	– None –
SLHWW-N	S54329-F23-A2		✓	✓	WALL	– None –	WHITE	– None –
SLHSWR-F	S54329-F22-A1	Horn-Strobe	✓	—	WALL	Clear	RED	FIRE
SLHSWW-F	S54329-F22-A2		✓	—	WALL	Clear	WHITE	FIRE
SLHSWR-FB	S54329-F24-A1	Horn-Strobe	—	✓	WALL	Clear	RED	– Pictogram –
SLHSWW-FB	S54329-F24-A2		—	✓	WALL	Clear	WHITE	– Pictogram –
SLHSWR-A	S54329-F31-A2	Horn-Strobe	✓	✓	WALL	Clear	RED	AGENT
SLHSWW-A	S54329-F34-A2		✓	✓	WALL	Clear	WHITE	AGENT
SLHSWR-N	S54329-F34-A1	Horn-Strobe	✓	—	WALL	Clear	RED	– None –
SLHSWW-N	S54329-F37-A1		✓	—	WALL	Clear	WHITE	– None –
SLHSWW-AL	S54329-F35-A1	Horn-Strobe	✓	✓	WALL	Clear	WHITE	ALERT
SLHSWR-AL	S54329-F32-A1		✓	✓	WALL	Clear	RED	ALERT
SLSWR-F	S54329-F25-A1	Strobe	✓	—	WALL	Clear	RED	FIRE
SLSWW-F	S54329-F25-A2		✓	—	WALL	Clear	WHITE	FIRE
SLSWW-FB	S54329-F26-A1	Strobe	—	✓	WALL	Clear	WHITE	– Pictogram –
SLSWR-FB	S54329-F26-A2		—	✓	WALL	Clear	RED	– Pictogram –
SLSWR-A	S54329-F27-A1	Strobe	✓	—	WALL	Clear	RED	AGENT
SLSWW-AL	S54329-F27-A2	Strobe	✓	✓	WALL	Clear	WHITE	ALERT
SLSWR-AL	S54329-F28-A1		✓	✓	WALL	Clear	RED	ALERT
SLSWW-ALA	S54329-F28-A2	Strobe	✓	✓	WALL	Amber	WHITE	ALERT
SLSWR-ALA	S54329-F29-A1		✓	✓	WALL	Amber	RED	ALERT
SLSWR-NA	S54329-F29-A2	Strobe	✓	✓	WALL	Amber	RED	– None –
SLSWW-NA	S54329-F30-A1		✓	✓	WALL	Amber	WHITE	– None –
SLSWW-N	S54329-F30-A2	Strobe	✓	—	WALL	Clear	WHITE	– None –
SLSWR-N	S54329-F31-A1		✓	—	WALL	Clear	RED	– None –
SLSBBR	S54329-F21-A1	Backbox	✓	✓	WALL	– None –	RED	– None –
SLSBBW	S54329-F21-A2		✓	✓	WALL	– None –	WHITE	– None –
SLESB-KIT-R	S54329-F64-A1	Optional Single-Gang Trim Plate	✓	✓	WALL	– None –	RED	– None –
SLESB-KIT-W	S54329-F64-A2		✓	✓	WALL	– None –	WHITE	– None –

**NOTICE**– The information contained in this data-sheet document is intended only as a summary, and is subject to change without notice. The product(s) described here has/have a specific instruction sheet(s) that cover various technical, limitation and liability information.

Copies of install-type, instruction sheets – as well as the *General Product Warning and Limitations* document, which also contains important data, are provided with the product. All are available from the Manufacturer.

Data contained in the aforesaid type of documentation should be consulted with a fire-safety professional before specifying or using the product.

Any further questions or assistance concerning particular problems that might arise, relative to the proper functioning of the equipment, please contact the Manufacturer.

**SIEMENS**

**Siemens Industry, Inc.**  
Smart Infrastructure – Building Products  
8 Fernwood Road • Florham Park, NJ 07932  
Tel: (973) 593-2600

July - 2021  
(Rev. 4)