

VISUAL

RELEASE ROADMAP

January 2021

infor

Disclaimer

This presentation reflects the direction Infor may take with regard to the products or services described herein, all of which is subject to change without notice. This presentation is not a commitment to you in any way and you should not rely on any content herein in making any decision.

Infor is not committing to develop or deliver any specified enhancement, upgrade, product, service or functionality, even if such is described herein. Many factors can affect Infor's product development plans and the nature, content and timing of future product releases, all of which remain in the sole discretion of Infor. This presentation, in whole or in part, may not be incorporated into any agreement. Infor expressly disclaims any liability with respect to this presentation.

VISUAL

2020 Enhancement Recap



Enhancement Requests

Voice of the Customer

61



Shop Floor Mobility

Increased productivity

27



Technology

Current operating environment adoption

7



Translation & Localization

Expand IQM footprint & VISUAL upgrades

3



Security ER's

Voice of the Customer Requests

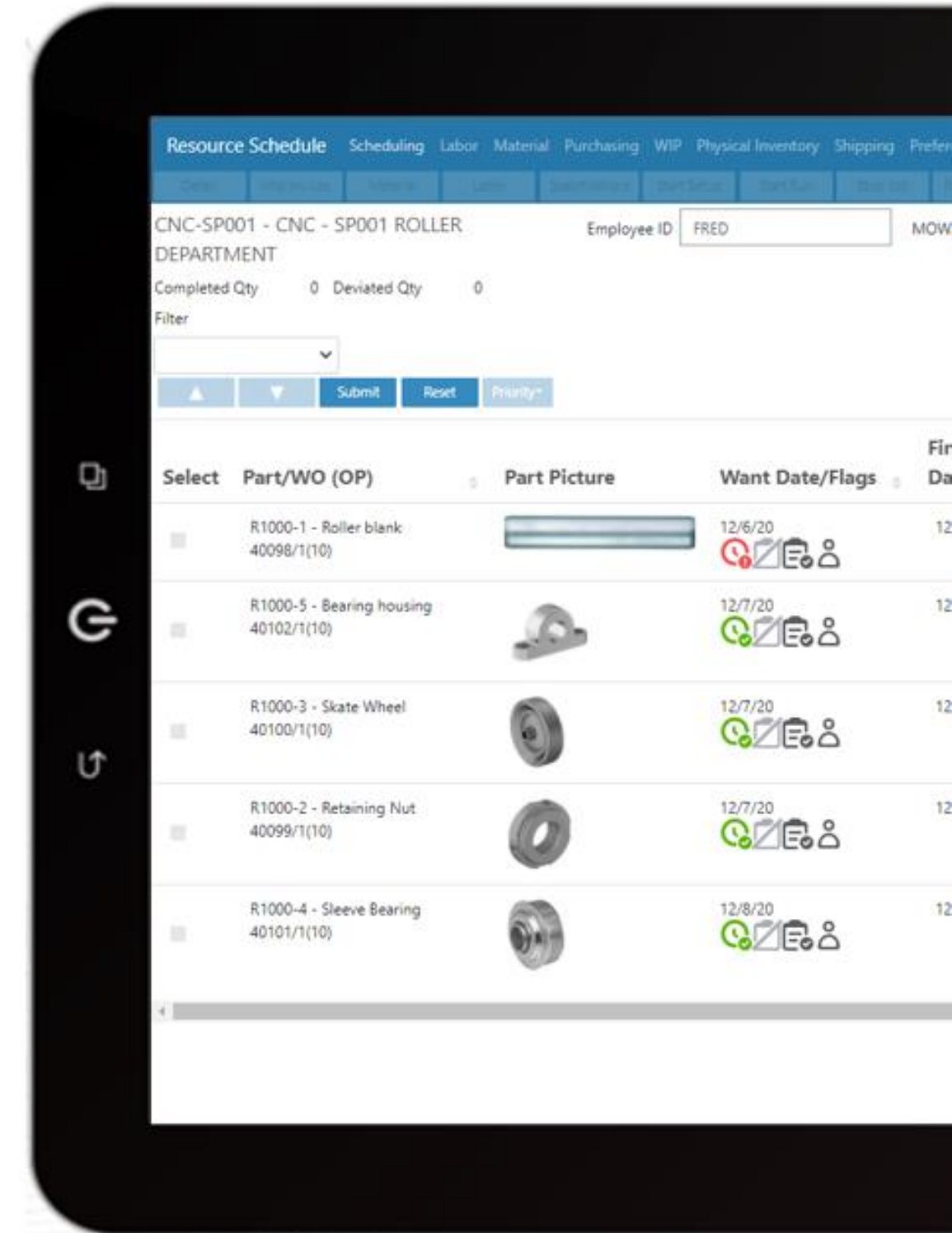
5



Total Projects

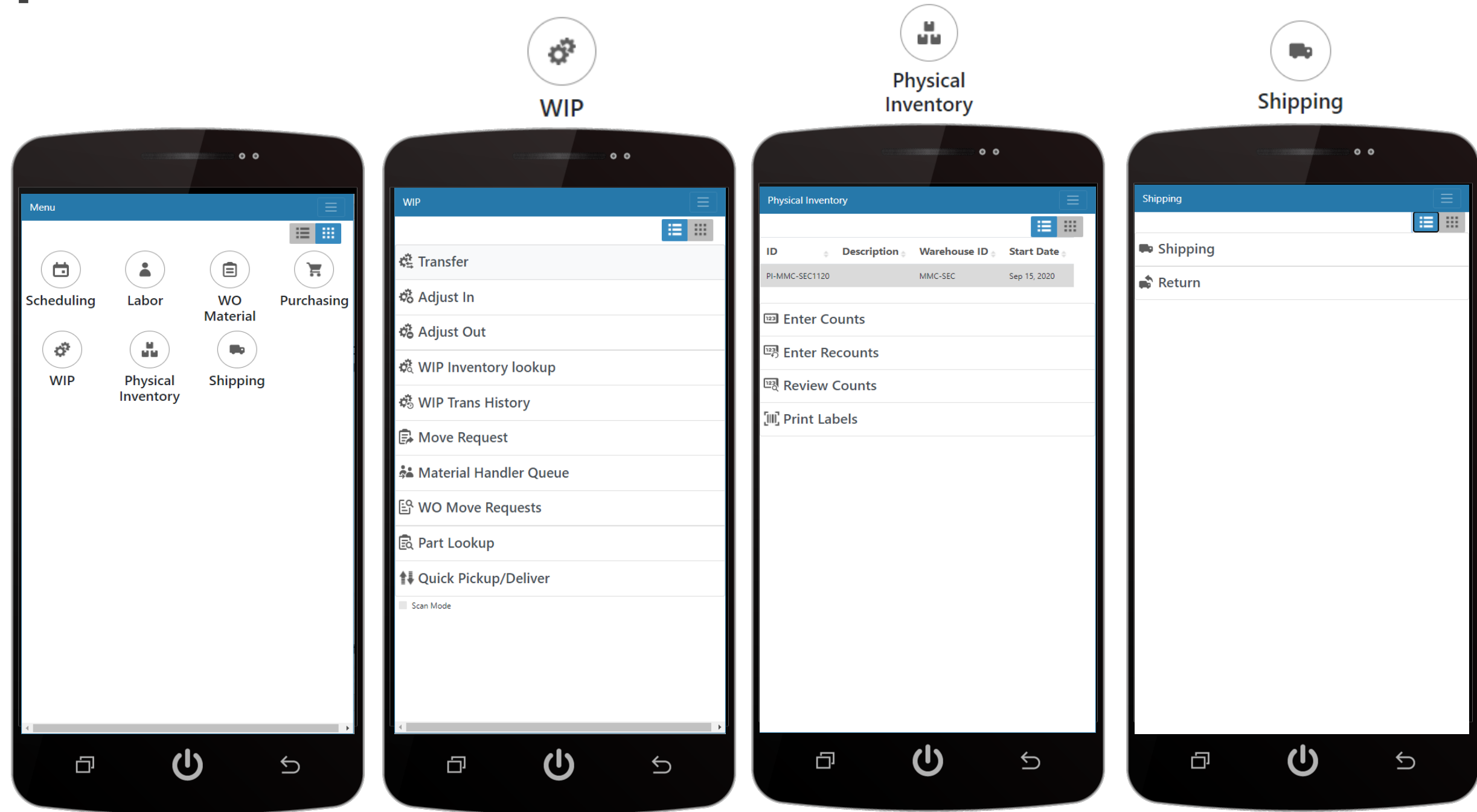
Total development projects completed

104



Expanded Shop Floor features

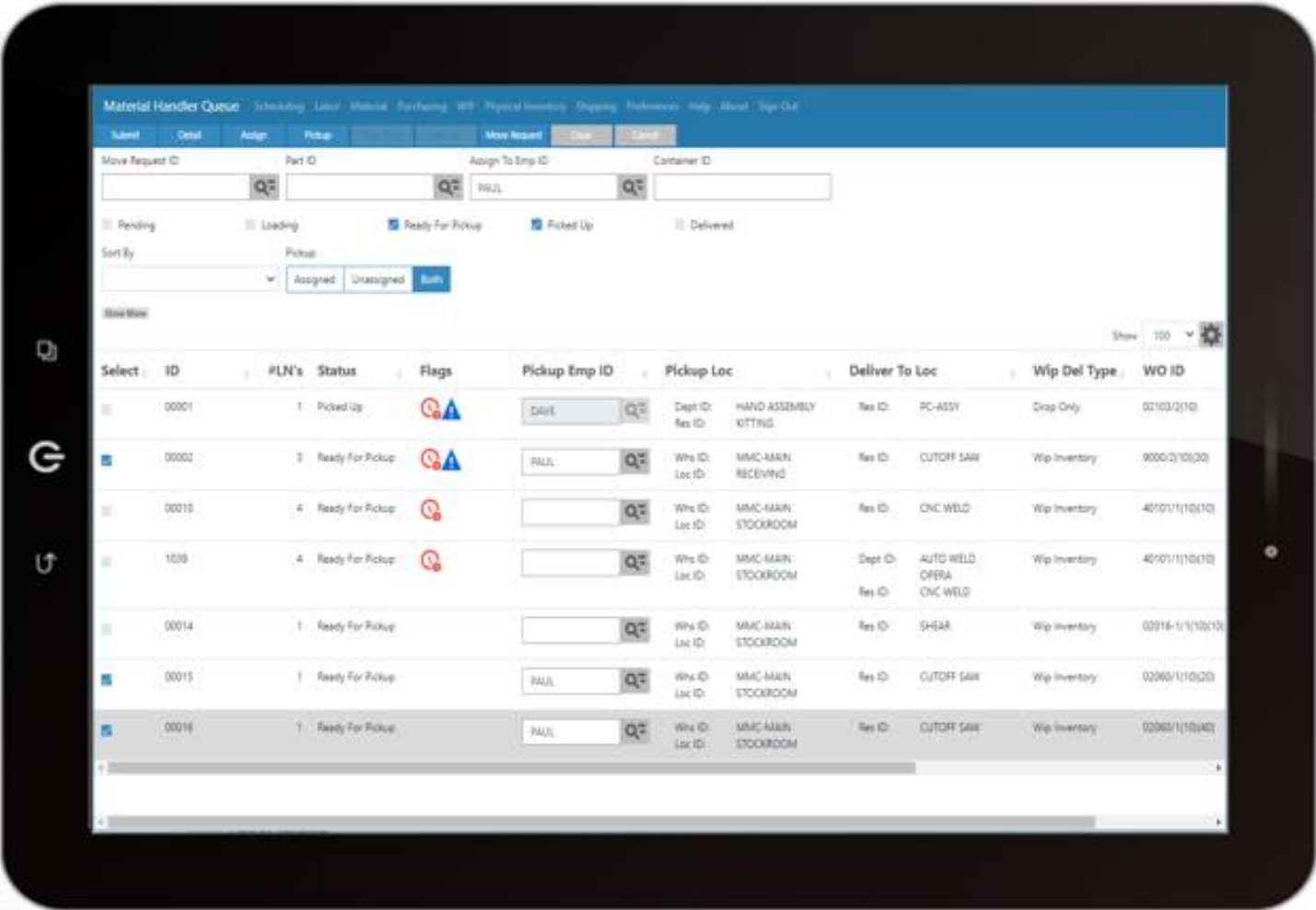
- WIP Inventory tracking
- Move Request with Material Handler Queue
- Labelling
- Physical inventory and cycle counting
- Shipments and Returns



VISUAL 10 HIGHLIGHT

WIP Management

Drive operation excellence over all work in process inventory logistics, streamlining the flow of demand and value-added material entering, moving within, and exiting production.



Benefits:

Flag and queue in-process material requiring pickup and delivery throughout the manufacturing facility

Assign locations to WIP inventory while waiting on the next operation

Create pick and move request labels for visual identification, tracking, and scanning automation

Sales Order Line Status



Provides increased order management and flexibility



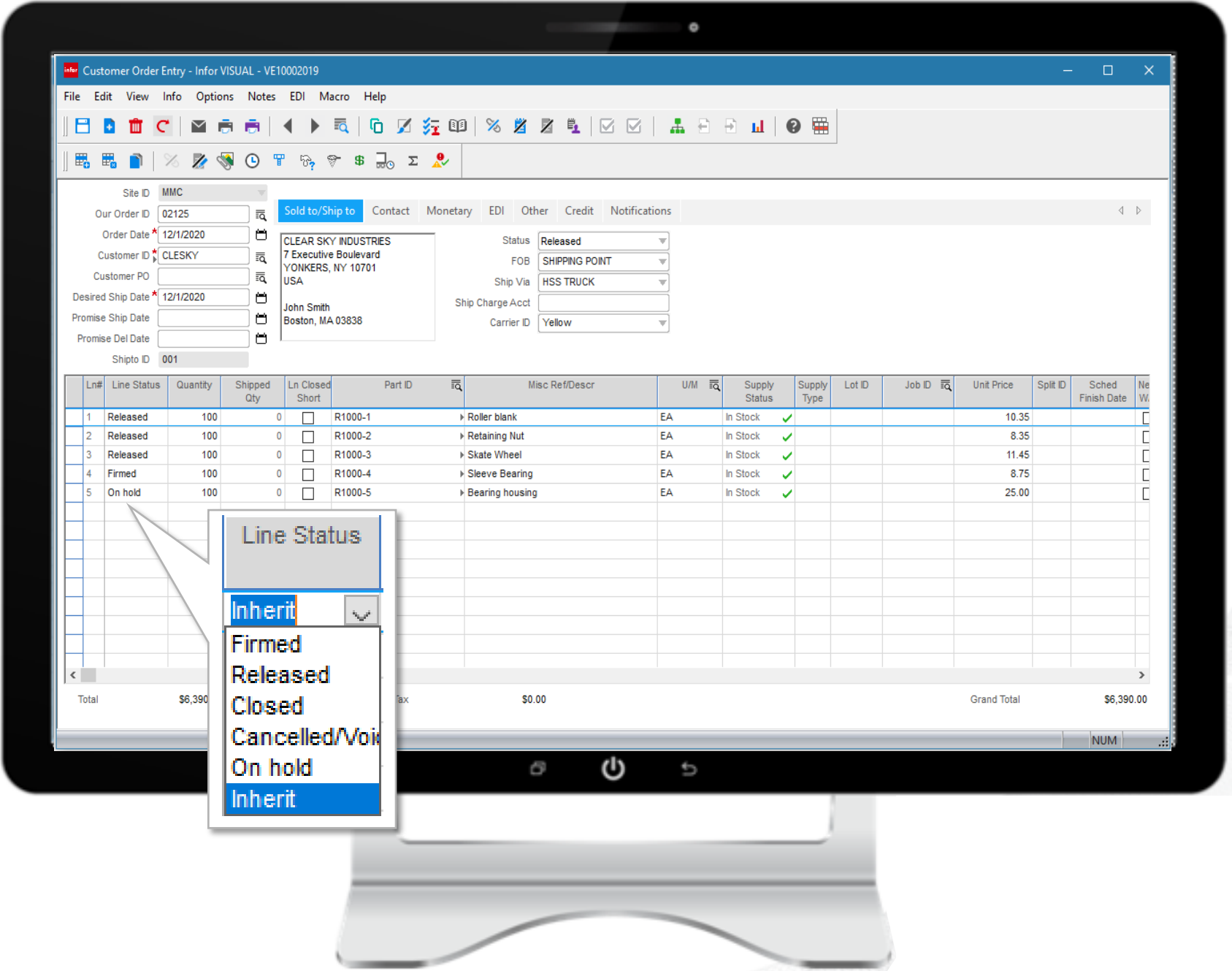
Preserves original order line, no need to delete or suppress attributes



Release lines individually into production or shipping



Statuses: Released, Firmed, Closed, On Hold, Cancel/Void, Inherit



Period Close by Functional Area



Selectively prevent accounting transactions by functional area

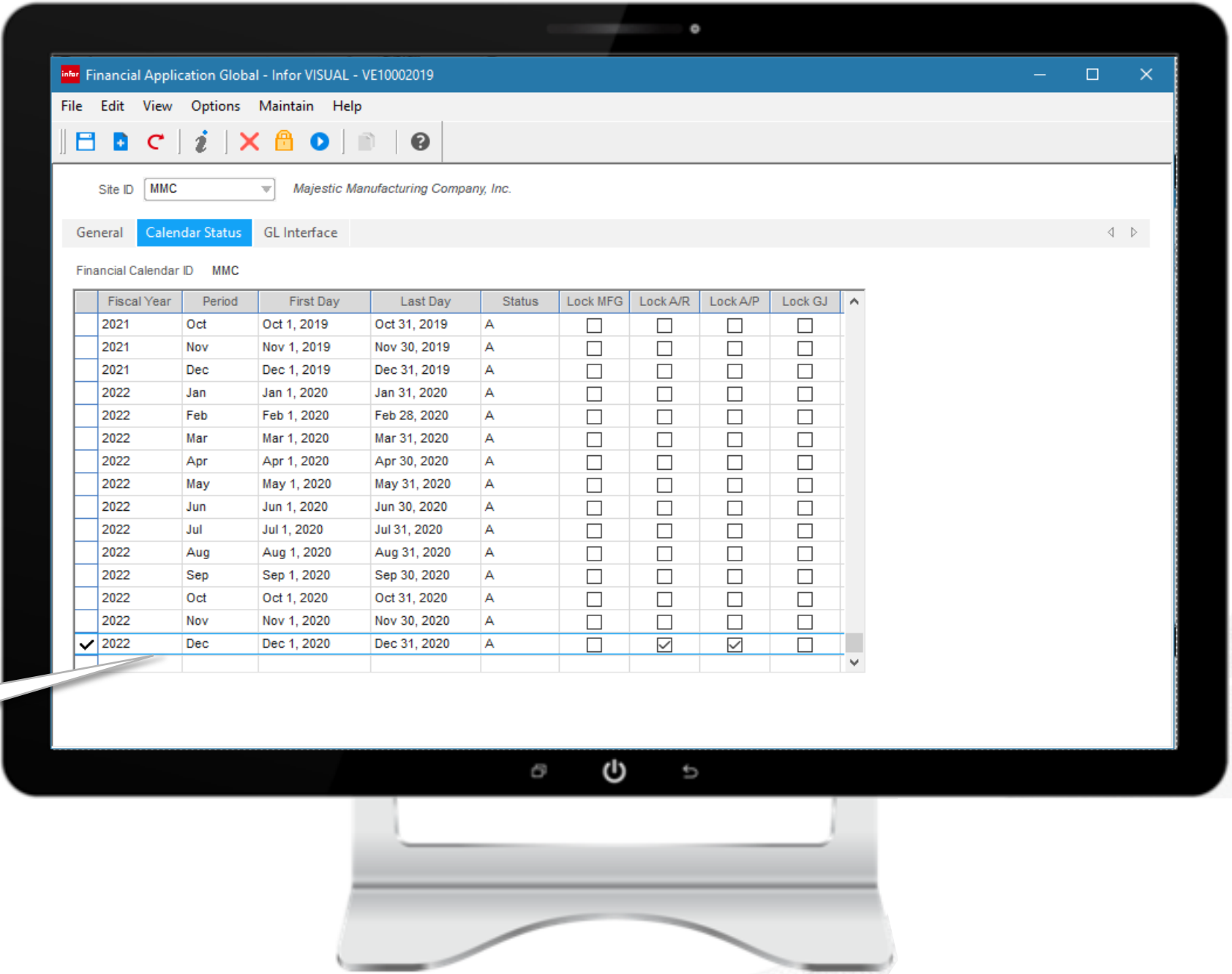


Provides a phased approach to closing a period



Prevents mistakes, eliminating the need to create reversing entries

Status	Lock MFG	Lock A/R	Lock A/P	Lock GJ
A	<input type="checkbox"/>	<input type="checkbox"/>	<input type="checkbox"/>	<input type="checkbox"/>



Parts statues



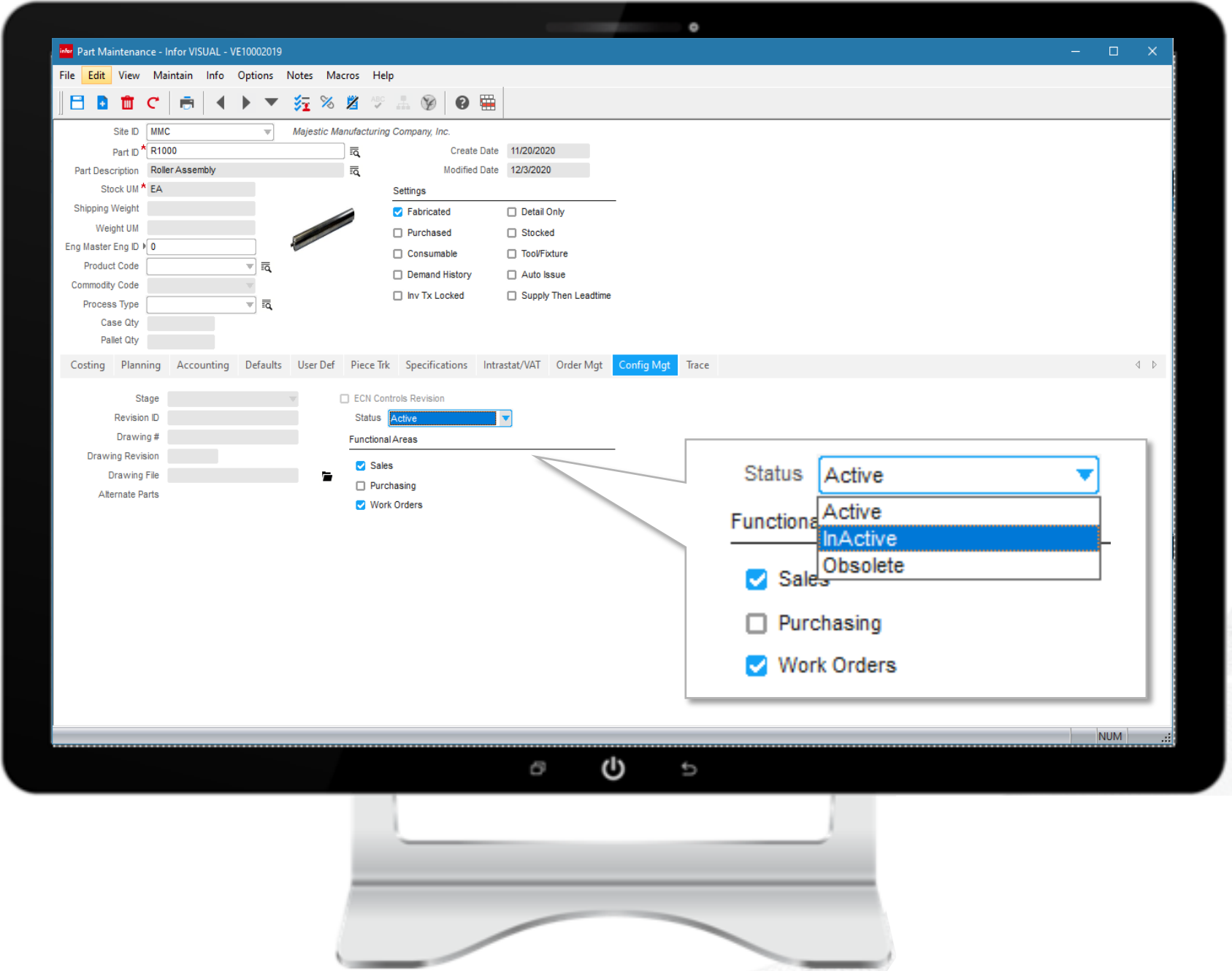
Set part as inactive, allowing existing transactions to process but no new uses



Use statuses for improved vetting process of new parts



Parts will not appear in search if not available for related business function



Shop Floor Schedule by Work Cell



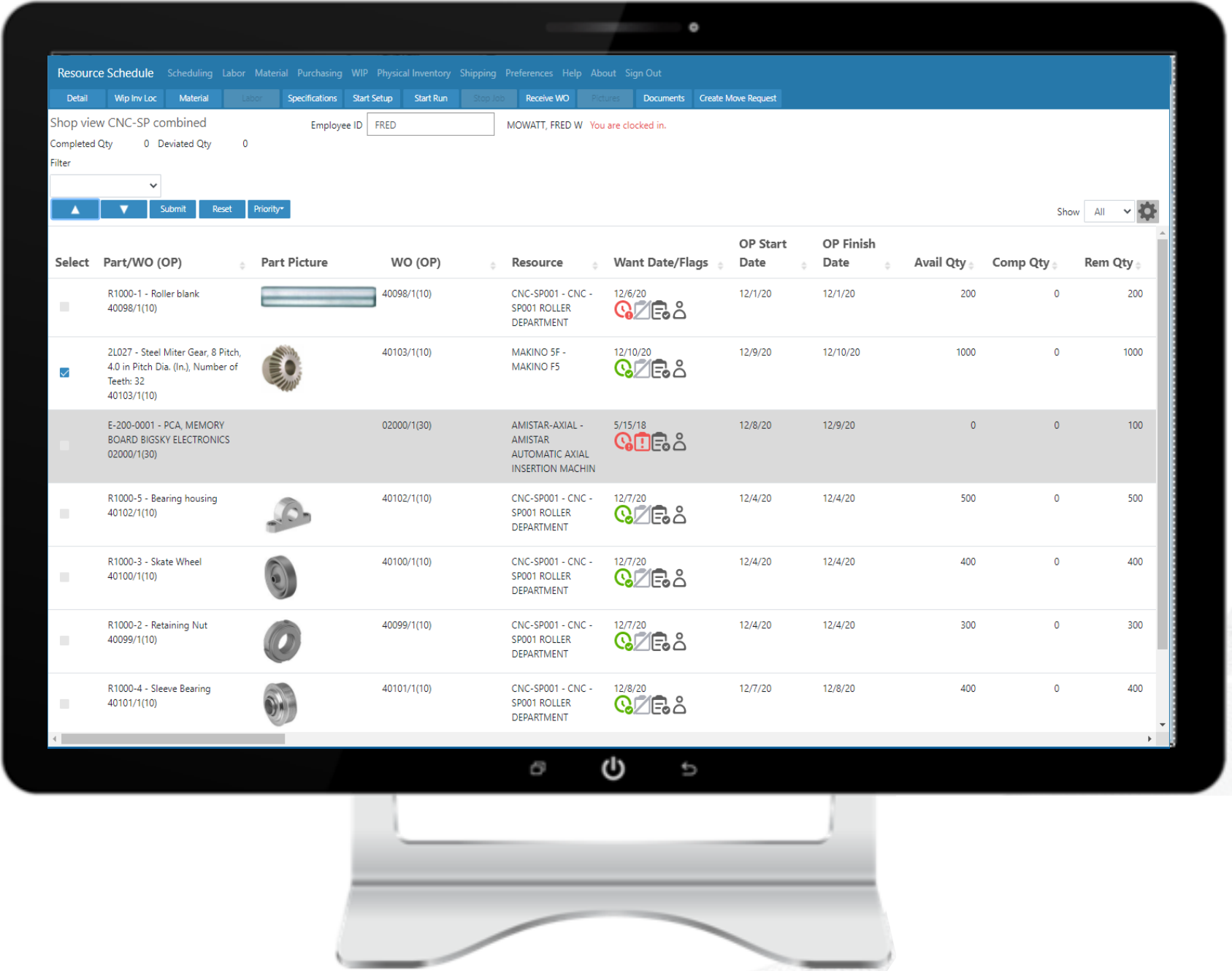
Display shop floor schedule by work cell / shop view / department



Filter or sort by customer, part, or work order to group or expedite work



Helpful when scheduling work by customer, work order, or part



VISUAL Product Lifecycle

Current versions of the product lifecycle can be found posted on Knowledgebase# 1116381

Infor VISUAL ERP product support schedule

Major Product version	General availability (GA)	End of mainstream maintenance	End of extended maintenance	End of sustaining maintenance	Extended fee	Sustaining fee
Infor VISUAL* 10.0.0	December 11, 2020	To Be Determined				
Infor VISUAL* 9.0.x	May 19, 2017	December 31, 2023	December 31, 2025	¹ To Be Determined	Standard Extended rate	Mainstream rate
Infor VISUAL 8.0.0	August 25, 2015	March 31, 2021	March 31, 2023	¹ To Be Determined	Standard Extended rate	Mainstream rate

12-month outlook (2021)

Mobile Contact Center

Uplift VISUAL CRM Contact Center to the shop floor UI

Infor Quality Management

Customer Enhancement Requests, New Mongoose UI

Shop Floor

Customer Enhancement Requests and Data Entry forms for integration to IQM

Country Packs

VISUAL 10 – Italy, LATAM, Netherlands, China, Czech Republic, Mexico CFDI & Extractor

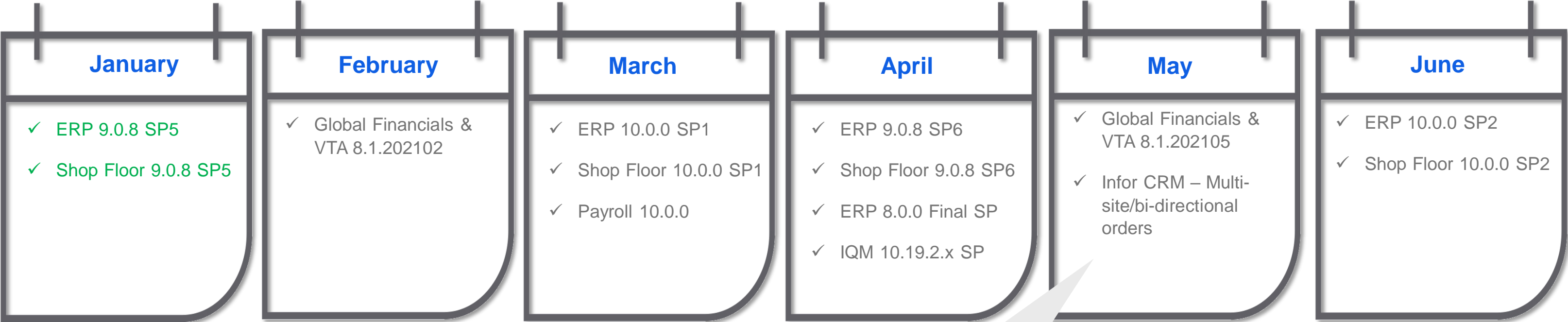
Infor CRM

Multi-site & bi-directional orders

Customer Enhancements

Enhancements from the 2020 voting process

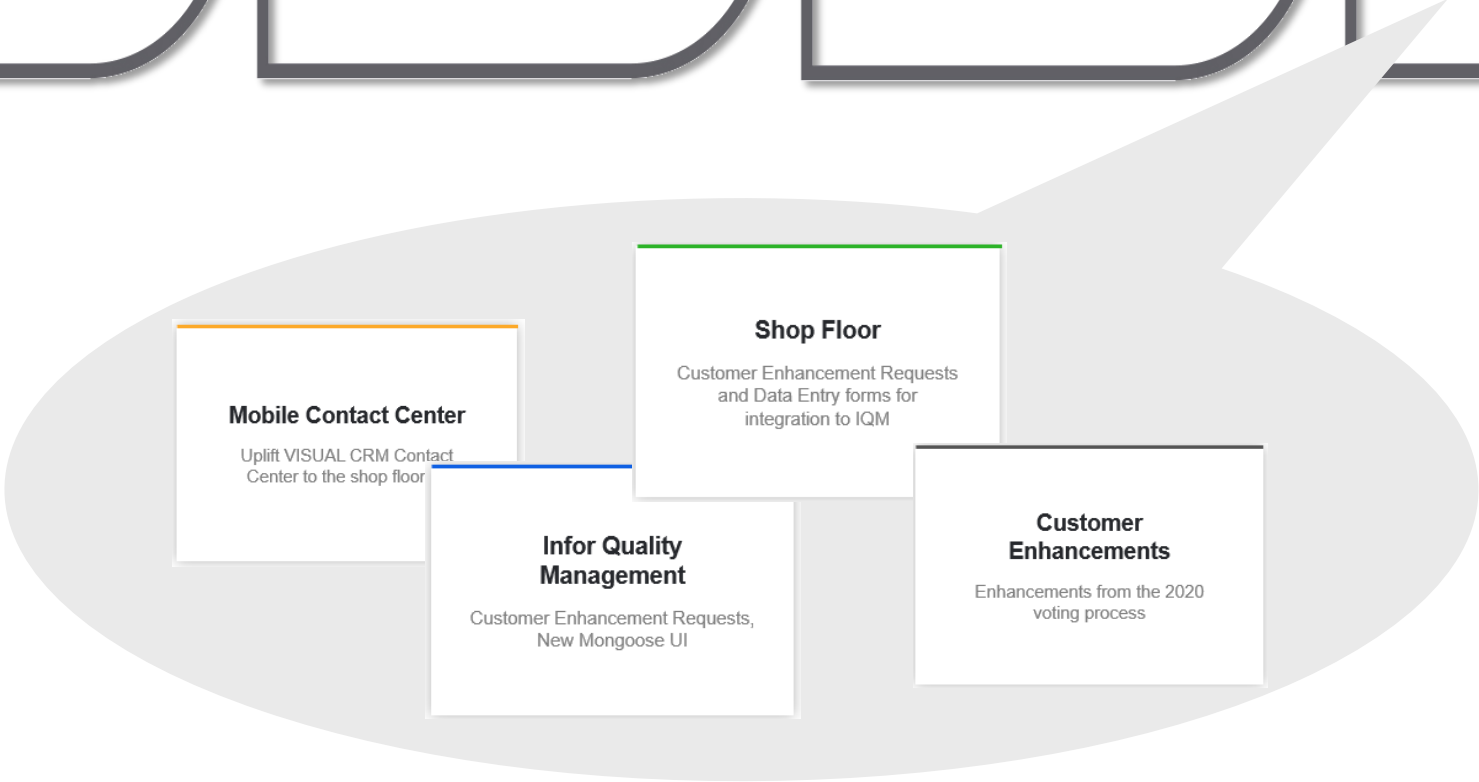
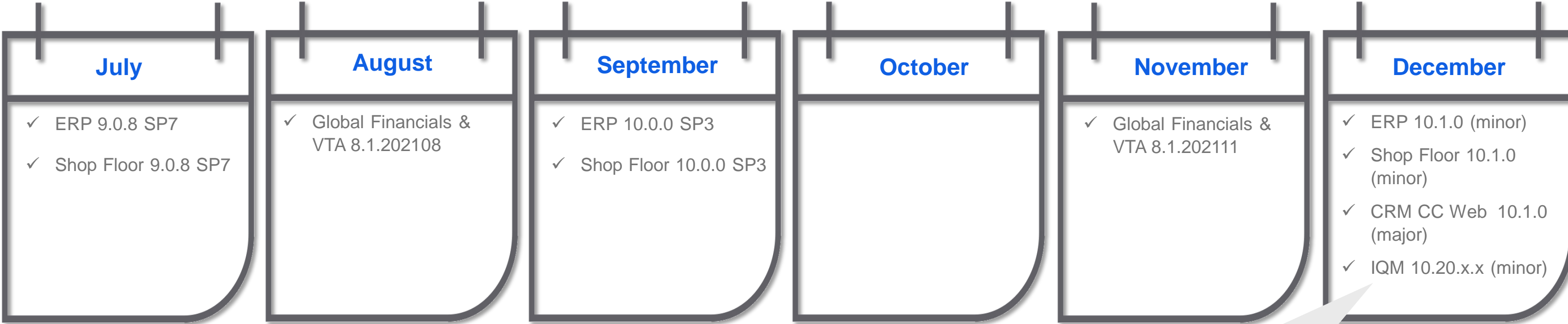
2021 Release Timeline



Infor CRM
Multi-site & bi-directional orders

GA releases noted in green

2021 Release Timeline



GA releases noted in green



2021 Enhancement details

ERS #	MODULE	AREA OF INFLUENCE	RELEASE	ENHANCEMENT
47297	Shop Floor	Labor Reporting	TBD	Report by quantity rather than clock-in / clock-out.
	Shop Floor	Data Management	TBD	Purge of WIP and Move Requests
	Shop Floor	WIP process control	TBD	Dynamic quantity reporting on labels
59789	Shop Floor	Scheduling	TBD	Combine min/max unit of capacity operations as a single operation on the resource schedule view
40979	Shop Floor	Scheduling Alerts	TBD	Adopt e-mail notification whereby production can e-mail personnel of production issues and flag WO's to notify contributing departments
55683	Shop Floor	Document Management	TBD	Make part drawing and drawing file available within shop floor
49285	Shop Floor	Work Instructions	TBD	Open the work order specification screen in full maximized mode verses a small dialog
49684	Shop Floor	Scheduling	TBD	Estimate, actual, and hour information on resource form
52487	Shop Floor	Labor Reporting	TBD	Simplify quantity complete entry
49682	Shop Floor	Scheduling	TBD	Add resource capacity and available capacity columns to the resource listing screen

2021 Enhancement details

ERS #	MODULE	AREA OF INFLUENCE	RELEASE	ENHANCEMENT
49685	Shop Floor	Scheduling	TBD	Update in-process labor icon indicating whether it's a setup or run activity
49689	Shop Floor	Scheduling	TBD	Add setup complete indicator to resource schedule grid
57033	Shop Floor	Efficiency / Ease of use	TBD	Suppress tabs for features / modules not used or needed
57034	Shop Floor	Efficiency / Ease of use	TBD	Add grid column sequencing in PO Receiving and Return
63320	Shop Floor	Quality Reporting	TBD	Quality Data Collection forms for imputing test results based on IQM test plans inline with Labor Ticket Entry, Wedge and VTA
N/A	Shop Floor	Scheduling	TBD	Add a preference to show available quantity at the next reporting operation, not the auto-reporting operation

2021 Enhancement details

ERS #	MODULE	AREA OF INFLUENCE	RELEASE	ENHANCEMENT
64447	Time and Attendance	Production Labor Reporting	8.1.201202	VTA Timesheet entry/Timesheet Admin Work Order and Operation Info
64994	Time and Attendance	Production Labor Reporting	8.1.201202	VTA restrict resources for an employee that works in Multiple sites
N/A	Global Financials	Security	8.1.201202	Force user to change password when logging in to be consistent with VISUAL ERP 10
N/A	Global Financials	Sales Management	8.1.201202	Ability to deactivate Sales Reps to be consistent with VISUAL ERP 10
41031	Sales – Core VISUAL	Efficiency		Add advance browse with auto-browse on the Service Charge ID. I.E. Same behavior as Part ID

THANK YOU

