

Capital Equipment Reference Guide

Product Checklist for Every Acute Care Setting



Capital Equipment Reference Guide

Table of Contents

Assembly & Sterilization Room

Drying Scope Cabinets	6
Ultrasonic Pre-Wash Units	6
Instrument Container Wash Carts	6
Sterile Processing Cart Washers	7
Scrub Carts	7
Processing Sinks	7
Stainless Steel Utility Carts	8
Utility Tables	8
Wrap Racks	8
Stainless Steel Back Tables	9
Prep & Pack Tables	9
Prep Tables	9

Behavioral Health Common Area

Chairs	10
Multipurpose Tables	10
Coffee Table	10
Seating & Tables	11
Lighting	11
Poly Waste Basket	11

Behavioral Health Resident Room

Beds	12
Hospital Beds	12
Bedside Cabinets	12
Dressers	13
Chairs	13
Desks	13
Lighting	14
Mirrors	14
Poly Waste Basket	14

Cath Lab

Anesthesia Stools	15
Surgeons Stools	15
Apron Racks	15
Aprons	16
X-Ray Accessories	16

Cath Lab (continued)

Mobile Radiation Shields	16
Glasses	17
C-Arm Tables	17
Drying Scope Cabinets	17
Anesthesia Carts	18
Crash Carts	18
Suture Procedure Carts	18
Hampers	19
Waste Receptacles	19
I.V. Poles	19
I.V. Pole Accessories	20
Lighting	20
Imaging Tables	20
Instrument Tables	21
Space Station Tables	21
Kick Buckets	21
Mayo Stands	22
Solution Stands	22
Stacking Step Stools	22
Vital Signs Monitors	23
Transfer Boards	23
Transfer Sheets	23

Emergency Room

Stretchers	24
Digital Scales	24
Baby Scales	24
Treatment Carts	25
Hampers	25
I.V. Poles	25
I.V. Pole Accessories	26
Integrated Diagnostics Systems	26
Bladder Scanners	26
Patient Communication Boards	27
Workstation on Wheels	27
Blanket Warmers	27
Crash Carts	28
Physician Stools	28
Wheelchairs	28

EVS Closet

Walk-Behind Floor Scrubbers	29
Wet-Dry Vacuums	29
I-Mops	29
Housekeeping Carts	30
Wet Floor Signs	30

Hospital Room

Hampers	31
Waste Baskets	31
Workstation on Wheels	31
Hospital Beds	32
Recliners	32
Overbed Tables	32
I.V. Poles	33
I.V. Pole Accessories	33
Integrated Diagnostics Systems	33
Vital Signs Monitors	34
Patient Lifts	34
Patient Communication Boards	34

Imaging Room

Arpons	35
Apron Racks	35
X-Ray Accessories	35
Glasses	36
Mobile Radiation Shields	36
MRI Conditional Carts	36
MRI Safe I.V. Poles	37
MRI Safe Foot Stool	37
X-Ray Illuminators	37
X-Ray Shields	38
Imaging Accessories	38

Kitchen/Cafeteria

Bus Boxes	39
Bus Carts	39
Meal Delivery Carts	39
Tray Carts	40

Kitchen/Cafeteria (continued)

Trays	40
Stainless Steel Utility Carts	40
Cup Dispenser	41
Food Scales	41

Labor & Delivery

Hospital Beds	42
Baby Scales	42
Bassinets	42
Bedside Cabinets	43
Recliners	43
Overbed Tables	43
Blanket Warmers	44
Cribs	44
Fetal Monitoring Carts	44
Hampers	45
Waste Baskets	45
Stainless Steel Utility Carts	45
Fetal Dopplers and Fetal Monitor	46
I.V. Poles	46
I.V. Pole Accessories	46
Patient Communication Boards	47
Ultrasounds	47
Workstation on Wheels	47

Laboratory

Instrument Tables	48
Stainless Steel Utility Carts	48
Suture Procedure Carts	48
Hampers	49
Waste Baskets	49
Mayo Stands	49
Solution Stands	50
Stacking Step Stools	50
Physician Stools	50
Storage Cabinets	51
Centrifuge	51
Digital Mini Tube Rotator	51
Pharmacy/Vaccine Refrigerators	51

Locker Room

Benches	52
Lockers	52
Digital Scales	52
Hampers	53
Scrub Carts	53

Mortuary

Autopsy Tables	54
Body Lifts	54
Cadaver Carriers	54
Refrigerators	55
Stainless Steel Utility Carts	55
Organ Scales	55

Nurses' Station

Crash Carts	56
Isolation Carts	56
Poly Utility Carts	56
Reception Desks	57
Vinyl Task Chairs	57
File Cabinets	58
Narcotics Cabinets	58
Workstation on Wheels	58
Whiteboards	59
Blanket Warmers	59
Waste Baskets	59

Office

Conference Tables	60
Office Chairs	60
Desks	60
File Cabinets	61
Waste Baskets	61
Whiteboards	61

Operating Room

Anesthesia Stools	62
Surgeons Stools	62
Bladder Scanners	62
Blanket Warmers	63
Anesthesia Carts	63
Crash Carts	63
Isolation Carts	64
Case Carts	64
Open Case Carts	64
Stainless Steel Utility Carts	65
Clear Cervical Visualizer (CCV)	65
Vital Signs Monitors and Patient Monitors	65
Electrosurgical Generator	66
Integrated Diagnostics Systems	66
I.V. Poles	66
I.V. Pole Accessories	67
Barrier Drape Clips	67
Hampers	67
Waste Receptacles	68
Kick Buckets	68
Mayo Stands	68
Solution Stands	69
Step Stools	69
Stacking Step Stools	69
Procedure Lighting	70
Scope Cabinets	70
Storage Cabinets	70
Stretchers	71
White Boards	71
Utility Tables	71
Stainless Steel Back Tables	72
Instrument Tables	72
Space Station Tables	72
Armboards	73
Transfer Boards	73
Roller Boards	73

Patient Records

Fireproof File Cabinets	75
Track Shelving	75

Pharmacy

Bins	76
File Cabinets	76
Fireproof File Cabinets	76
Medication Carts	77
Narcotics Cabinets	77
Pharmacy/Vaccine Refrigerators	77
Stools	78
Shelving	78
Stacking Step Stools	78

Pre Op/Post Op

Treatment Carts	79
Digital Scales	79
Vital Signs Monitors and Patient Monitors	79
Integrated Diagnostics Systems	80
Hampers	80
Wheelchairs	80
I.V. Poles	81
I.V. Pole Accessories	81
Overbed Tables	81

Pre Op/Post Op (continued)

Recliners	82
Physician Stools	82
Phlebotomy Chairs	82
Phlebotomy Carts	83
Privacy Screens	83
Stretchers	83
Workstation on Wheels	84
Blanket Warmers	84

Scrub Area

Scrub Sinks	85
Blanket Warmers	85
Hampers	85

Storage Room

Poly Utility Carts	86
Bins	86
Grid Storage Panels	86
High-Density Shelving	87
Louver Panels	87
Shelving	87
DSI Shelving	88

Therapy & Rehab Room

Upright Exercise Bikes	89
Recumbent Exercise Bikes	89
Recumbent & Lateral Steppers	89
Ellipticals	90
Treadmills	90
Ergometers	90
Full Body Exercises	91
Functional Exercise	91
Wall-Mounted Exercise	91
Strength Equipment	92
Strength Accessories	92
ActivICE Topical Pain Relief	92
Neurogym	93
Virtual Reality Exercise	93
Treatment Tables (Power)	93
Wooden Treatment Tables	94
Hi/Lo Treatment Tables	94
Mat Tables	94
Tilt Tables	95
Stand-In Tables	95
Parallel Bars	95
Training Stairs	96
Work Tables	96
Physician Stools	96
E-Stim/Ultrasound	97
Diathermy	97
Light Therapy	97
Dysphagia Therapy – VitalStim Plus	98
Hivamat	98
Moist Heat Therapy	98
Cold Pack Machines	99
Game Ready	99
Hawkgrrips	99
Digital Scales	100
Vital Signs Monitors and Patient Monitors	100
Hampers	101
Privacy Screens	101

Waiting Room

Reception Counters	102
Guest Chairs	102
Magazine Racks	102
Wheelchairs	103
Waste Baskets	103
Vinyl Task Chairs	103

Your **complete** Capital planning and services solution.

We Design, Deliver and Install.

From space planning and product selection to delivery and installation, our experts work closely with you to make your Capital purchases easy.

Free Design Assistance

From **space optimization to product and fabric selection.**

We'll evaluate your space and develop a custom layout.

- Creating the best environment to foster productivity while maintaining patient safety
- Evidence-based design enhances the patient and staff experience
- Product, fabric, finish and color scheme selection
- 3D renderings
- Detailed quote

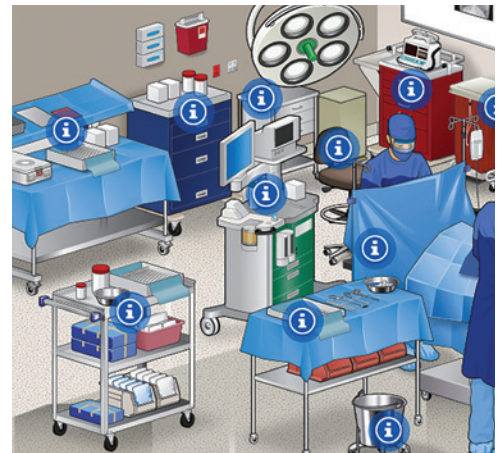


Simplified Shopping

With **Medline's Capital Quote Tool.**

Compare equipment options, quickly and easily.

- Choose from premium Medline products and other national brands
- Browse virtual rooms or search for specific items
- Choose product images to add to your quote
- Request a quote directly through the tool
- Access to national GPO contracts



Delivery and Installation

With **White Glove Service.**

Unique receiving needs? No problem. Our years of experience will ensure your project is in good hands. We'll help coordinate:

- Warehousing and consolidation
- Assembly: pre-delivery or during installation
- Delivery: dock-to-dock*, lift-gate**, inside to a specific location
- Unpacking and installation, including wall mounting
- Old equipment removal
- Garbage removal with dumpster



*Let us know if our 53-ft. carrier won't fit in your dock. Additional charges apply if we have to return to our hub, put your equipment on a smaller truck and attempt a second delivery.

**Lift gates must be requested when ordering as not all our trucks have them.

Assembly & Sterilization Room

Drying Scope Cabinets



- HLFSC8136DRDP***
- 16-scope drying cabinet
- Includes Sure-Dry positive pressure HEPA filter system
- 33 D x 44 W x 97" H



- HLFEDPDSS3316***
- 15-scope drying cabinet
- Includes Dri-Scope Aid™ for internal lumen drying
- 21 D x 36 W x 93" H



- SUYTED2501UV**
- 9-scope drying cabinet
- Includes HEPA Filter
- 38¹/₁₀ D x 30¹/₁₀ W x 89²/₅" H

*Available in other colors and configurations

Ultrasonic Pre-Wash Units



- SUYSTUS100L**
- Stainless steel
- Two step cleaning 1. Water and detergent dosed with control of parameters 2. Ultrasonic Steelco Active Flush technology cycle
- 31¹/₂ W x 27³/₁₆ D x 37³/₁₆ H



- SUYSTUS80**
- Stainless steel
- Capacity: up to 12 hollow instruments in a single cycle
- 29⁷/₈ W x 22¹/₁₆ D x 15¹/₁₆" H

Ultrasonic Pre-Wash Units include delivery and installation

Instrument Container Wash Carts



- PEDCDS160**
- 5 shelves
- Stainless steel
- 49 W x 26 D x 67" H



- PEDCDS162**
- 3 shelves
- Stainless steel
- 49 W x 26 D x 66¹/₂" H

Assembly & Sterilization Room

Sterile Processing Cart Washers



- PEDDCS151C**
- Includes 3 wire shelves
 - Open wire bottom for improved steam circulation
 - 37¾ W x 24½ D x 55¾" H



- PEDDCS150C**
- Includes 2 wire shelves
 - Includes bumpers
 - 37¾ W x 24½ D x 45¾" H



- MDRQU7051**
- 3 adjustable shelves
 - Teflon non-marring bumper
 - 24 D x 36 W x 57" H

Scrub Carts



- MDRQ2436C46E***
- Enclosed on 3 sides
 - Chrome
 - 24 D x 36 W x 69" H



- MDRQWRC632436***
- Enclosed on 3 sides and 1 solid shelf
 - Chrome
 - 24 D x 36 L x 69" H



- MDRQDBS632436***
- Enclosed on 3 sides and 1 solid shelf with dolly base
 - Chrome
 - 24 D x 36 L x 70" H

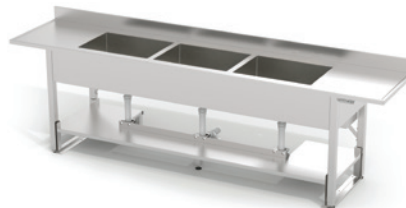
*Available in other sizes and configurations

Processing Sinks

ANSI/AAMI recommend triple basin sinks (Pre-soak, Cleaning, and Rinsing)



- MPHPS120371***
- Pipe base
 - Triple basin
 - Stationary height



- MPHPS1209***
- Pipe base
 - Triple basin
 - Height adjustable



- MPHPS12091131***
- Pipe base
 - Triple basin with accessory package
 - Height adjustable

*Available in other configurations

Assembly & Sterilization Room

Stainless Steel Utility Carts



- LKS726***
- 700-lb. weight capacity
- 32 $\frac{1}{2}$ " W x 19 $\frac{1}{2}$ " D x 34 $\frac{1}{2}$ " H



- MPH311***
- 300-lb. weight capacity
- 16 $\frac{1}{4}$ " W x 27 $\frac{1}{2}$ " L x 32 $\frac{1}{2}$ " H



- MPH526***
- 500-lb. weight capacity
- 19 W x 31 L x 34 $\frac{3}{4}$ " H

*Available in other sizes

Utility Tables



- PEDSG80ASS***
- Stainless steel with 2 drawers
- 700-lb. weight capacity
- 20 W x 16 D x 34" H



- PEDSG80SS***
- Stainless steel with 1 drawer
- 700-lb. weight capacity
- 20 W x 16 D x 34" H



- PEDSG81SS***
- Stainless steel, no drawers
- 700-lb. weight capacity
- 20 W x 16 D x 34" H

*Available in other sizes

Wrap Racks



- MDRQCLPSW1863**
- Chrome
- Flat surface
- 18 W x 63 L x 39 $\frac{1}{2}$ " H



- MDRQWRCSW2448**
- Chrome
- Cascading surface
- 24 W x 48 L x 69" H



Assembly & Sterilization Room

Stainless Steel Back Tables



- MPH08MCM573HL***
- H-brace
 - No shelf, no casters
 - 36 W x 20 D x 35" H



- MPH08MCM582SC***
- With shelf
 - 24 D x 60 L x 35" H



- PEDSG99SS***
- H-brace
 - Soundproofed reinforced channels for quiet use
 - 36 W x 24 D x 34" H

*Available in other sizes

Prep & Pack Tables



- MPHSS48ETABL1**
- 71 $\frac{1}{8}$ –83 $\frac{3}{8}$ " H adjustable
 - Stainless steel construction
 - Package A: Adjustable overhead light and mounted power strip



- PEDCDS1000**
- Electronically operated hydraulic height adjustment from 36–47 $\frac{1}{2}$ " H
 - Stainless steel construction
 - Includes 6 removable stainless steel trays, 3 large pegboards, 8 slide-out lower shelves for bins, and a center drawer



- MPHSS72ETABL3**
- 71 $\frac{1}{8}$ –83 $\frac{3}{8}$ " H adjustable
 - Stainless steel construction
 - Package C: Adjustable overhead light, mounted power strip, bin/spool holder, 5 bins, full shelf, half shelf, peg board, 2 wire grids and computer housing drawer and monitor arm

Prep Tables



- PEDCDS2472C***
- Includes accessories: bins and shelf
 - Stainless steel
 - 72 W x 24 D x 34" H



- PEDCDS3260C***
- Includes accessories: bins, shelf and rack
 - Stainless steel
 - 60 W x 32 D x 34" H



- PEDCDS3684***
- Heavy-duty, all stainless steel construction
 - Height adjustable floor glides
 - 84 W x 36 D x 34" H

*Available in other configurations and sizes; available with and without casters

Behavioral Health Common Area

Chairs



NORFC610QS*

- Tamper-resistant steel encased nylon glides for floor protection
- 750-lb. weight capacity
- 26 $\frac{3}{8}$ " D x 21" W x 32 $\frac{1}{2}$ " H



PNPARYD00EB*

- Water resistant, can be used outdoors
- Constructed of durable plastic with a weight capacity of 500-lb.
- 19 $\frac{3}{8}$ " W x 24 $\frac{3}{8}$ " D x 34 $\frac{3}{8}$ " H



PNPARYL00CG*

- Water resistant, can be used outdoors
- Constructed of durable plastic with a weight capacity of 500-lb.
- 23 $\frac{3}{8}$ " W x 29 $\frac{3}{8}$ " D x 30 $\frac{3}{8}$ " H

*Available in other colors

Multipurpose Tables



MDRDRT20X20BH*

- Weighted to deter misuse
- 20" D x 20" H



NORWAAQS*

- Steel tubing welded to steel plate for attaching top
- Won't wobble or tip
- 42" x 42"



PNP1RYT00DG*

- Cruciform base designed to minimize conflict and passing of contraband
- Weighted table to limit weaponizing unit
- 29 $\frac{1}{2}$ " H x 49 $\frac{1}{8}$ " D

*Available in other colors

Coffee Table



PNPARYLD00IP*

- Constructed of polyethylene
- Water resistant
- 25 $\frac{1}{8}$ " W x 25 $\frac{1}{8}$ " D x 16 $\frac{1}{8}$ " H

*Available in other colors

Solid composites
are more resistant
to breakage
and abuse



Behavioral Health Common Area

Seating & Tables



- KWA30542BH***
- Square, shaker legs, bullnose $\frac{3}{8}$ "
 - Standard height
 - 42 W x 42 D x 29 $\frac{3}{4}$ " H



- KWA32542BH***
- Round
 - Wheelchair height
 - 42 W x 42 D x 31 $\frac{3}{4}$ " H



- KWADT1R2A1ABH**
- Drum, round
 - 19 $\frac{1}{2}$ W x 19 $\frac{1}{2}$ D x 22" H

*Available in other colors

Lighting



- ARK5501FDL**
- Break resistant
 - On/Off push thru socket switch
 - 61 $\frac{1}{2}$ " H pole and 11" W base



- ARK5615TDL**
- Break resistant, bolt down available upon request
 - On/Off rotary base switch
 - 25" H

Poly Waste Basket



- STASF710BN***
- Corners and edges are rounded for increased safety
 - Virtually unbreakable and easy to clean
 - 24 W x 12 D x 10" H

*Available in other colors

Behavioral Health Resident Room

Beds



MDRFR9SFR

- Steel frame with restraint portals
- Includes restraint hole cut outs
- 37½ W x 82 D x 21" H



PNP1SVFA100

- Internal support ribs create extreme strength and resistance to damage
- Durable water resistant, stain resistant, anti-bacterial, and flame-retardant finish
- 18¾ H x 78¾ W x 39" D



STASF7801BN*

- Open shelving molded into the end of the bed
- Can be bolted to the floor
- 45 W x 86 D x 24" H

*Available in other colors

Hospital Beds



NOA1055050BEI

- NOA Behavioral Health Bed
- Ligature free siderails and lockbox for power cords
- 500-lb. weight capacity



AMC3FMBHB

- Amico Behavioral Health Bed
- Sturdy and secure siderails, restraint loops, and removable brake pedal
- Hydraulic foot pump and removable brake handle

Bedside Cabinets



NORATN255QS*

- HPL top has radiused edge for safety and pressure fused to the top
- Base is chemically resistant to blood, vinegar, urine, feces, salt solution and chlorine solution
- 22 W x 22 D x 23¾" H



PNP1AUB101HGW

- Heavy-duty hinges and robust drawer runners (rated to 40-kg.) provide durability
- Designed to minimize concealment areas, which include underside and between drawers
- 17¾ W x 19 D x 23½" H



STASF7602BN*

- Can be bolted to the wall
- Open shelving to prevent concealed prohibited items
- 21 W x 18 D x 22" H

*Available in other colors

Behavioral Health Resident Room

Dressers



- NORATN750QS**
- Can bolt to the floor
 - Fluid resistant; permanently affixed top
 - 30 W x 18 D x 42½" H



- PNP1AUOC400**
- Scalloped handles, piano hinges, and curved drawer tops to reduce ligature risk
 - Heavily weighted to deter misuse
 - 78¾ W x 39 D x 18¾" H



- STASF7201BG**
- Molded in shelving
 - Ability to be bolted to the wall
 - 30 W x 18 D x 42" H

Chairs



- PNPARYU00VY***
- Constructed of polyethylene
 - Water resistant, can be used outdoors
 - 26¾ W x 26¾ D x 31¾" H



- NORFC620QS**
- Fire-retardant, high-impact polyethylene
 - Quick ship
 - 32¾ H x 31 D x 27" W



- STASF7901BN**
- Stain resistant, seamless and easy to clean
 - Can be bolted to the floor
 - 16½ W x 12 D x 15½" H

*Available in other colors

Desks



- PNP1AUD400HWG**
- Scalloped handles, piano hinges and curved door tops to reduce ligature risks
 - Heavily weighted to deter misuse
 - 28¾ H x 42¾ W x 19" D



- STASF7605BN**
- Stain resistant, seamless and easy to clean
 - Bolt to the wall via concealed pilot holes
 - 36 W x 24 D x 29" H



- KWAFWWD00**
- Tamper-proof design
 - Solid back panel
 - 35¾ W x 23¾ D x 30" H

Behavioral Health Resident Room

Lighting



ARK5501FDL

- Break resistant
- On/Off push thru socket switch
- 61½" H pole and 11" W base



ARK5615TDL

- Break resistant, bolt down available upon request
- On/Off rotary base switch
- 25" H

Mirrors



PNP1AUK001

- Smooth, rounded corners for safety
- Security fixings as standard
- 23¾ W x 19¼" H



STASF1115*

- Stain resistant, seamless and easy to clean
- Highly resistant to breakage
- 11 W x 15" H



STASF1824*

- Stain resistant, seamless and easy to clean
- Highly resistant to breakage
- 18 W x 24" H

*Available in other sizes

Poly Waste Basket



STASF710BN*

- Corners and edges are rounded for increased safety
- Virtually unbreakable and easy to clean
- 24 W x 12 D x 10" H

*Available in other colors



Anesthesia Stools



- PEDP7000BGE***
 - Hydraulic height adjustable and articulating arm/wrist rests
 - Height adjustable 20¾–28¾"
 - 300-lb. weight capacity

*Available in other colors



- PEDT583CAT***
 - Adjustable arm rests
 - Height adjustable 24¾–34¾"
 - 300-lb. weight capacity



- PEDT584CAT***
 - Adjustable backrest
 - Height adjustable 24¾–34¾"
 - 300-lb. weight capacity

Surgeons Stools



- PEDP6000LAK***
 - Hydraulic height adjustment and includes back
 - Height adjustable 20¾–28¾"
 - 300-lb. weight capacity

*Available in other colors



- PEDP6001PRLAK***
 - Hydraulic height adjustment and padded procedure rest
 - Height adjustable 20¾–28¾"
 - 300-lb. weight capacity

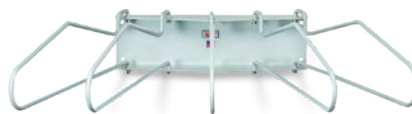


- PEDP7000BGE***
 - Hydraulic height adjustable and articulating arm/wrist rests
 - Height adjustable 20¾–21¾"
 - 300-lb. weight capacity

Apron Racks



- WOL16400**
 - Wall mounted
 - Set for a pair of gloves and 1 apron
 - 16 H x 8 D x 28" W



- WOL16410**
 - Wall mounted
 - Holds 5 aprons
 - 4¾ H x 23½ D x 17" W



- WOL16411**
 - Free standing
 - Holds 10 aprons
 - 54 W x 51 H x 20" D

Cath Lab

Aprons



- WOL6502320***
- Easy-wrap apron
 - 0.5 mm lead protection
 - Armholes help bring protection up close to armpits for better coverage



- WOL68099LW23***
- Quick-drop apron
 - 0.5 mm lead protection
 - Shoulder tabs and wrap around tabs help keep apron secure



- WOL66083CB23***
- Apron and vest
 - 0.5 mm lead protection in the front, 0.3 mm protection in the back
 - 2-piece set

*Available in other colors and sizes

X-Ray Accessories



- WOL75070***
- Nylon outer
 - 0.5 mm protective core
 - Held in place by an adjustable hook & loop



- WOL12419**
- Molded lead gloves
 - Supple enough to pick up small objects
 - 12" L



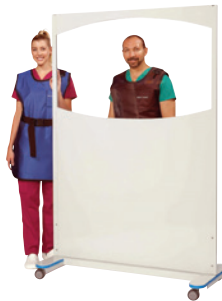
- WOL19110XR**
- Illuminated
 - Steel
 - 12 W x 7 H x 2½" W

*Available in other colors

Mobile Radiation Shields



- WOL23111**
- Mobile barrier
 - Height adjustable 33–48" H
 - 26¾ W x 18 D x 48" H



- WOL56603W***
- Viewing area 24 H x 30" W
 - Clear viewing panel has 0.5 mm lead protection
 - Locking casters



- WOL56610**
- Clear viewing panel has 0.5 mm lead protection on top portion, bottom portion is 1 mm
 - Locking casters
 - Height adjustable 45¼–74" H

*Available in other sizes

Cath Lab

Glasses



- WOL14130BK***
- Fits over any glasses
 - Side protection
 - Fits any size



- WOL14133BY***
- Wraparound style
 - Hi-Impact TR-90 nylon
 - Small/medium size



- WOL14139BK***
- Wraparound style
 - Hi-Impact TR-90 nylon
 - Medium size

*Available in other colors and styles

C-Arm Tables



- OAK55569T01**
- 1-motion
 - Includes integrated headrest
 - 500-lb. weight capacity



- OAK75209T01**
- 3-motion
 - Includes trendelenburg tilt and lateral tilt
 - 500-lb. weight capacity



- OAK75206T01**
- 4-motion
 - Includes integrated headrest, trendelenburg tilt, lateral tilt, and lateral travel
 - 500-lb. weight capacity

Drying Scope Cabinets



- HLFSC8136DRDP***
- 16-scope drying cabinet
 - Includes Sure-Dry positive pressure HEPA filter system
 - 33 D x 44 W x 97" H



- HLFEDPDSS3316***
- 15-scope drying cabinet
 - Includes Dri-Scope Aid™ for internal lumen drying
 - 21 D x 36 W x 93" H



- SUYTED2501UV**
- 9-scope drying cabinet
 - Includes HEPA filter
 - 38¹/₁₀ D x 30⁰/₁₀ W x 89²/₅" H

*Available in other colors and configurations

Cath Lab

Anesthesia Carts



HLF7456E

- 6 drawers: 4-3", 1-6", 1-9"
- Steel construction and accessories included
- Overall dimensions with accessories 32 W x 22 D x 57" H



MPH01WMLA9*

- 6 drawers: 4-3", 1-6", 1-9"
- Aluminum construction
- 29 W x 24½ D x 42" H



WTLUXGK433669*

- 6 drawers: 3-3", 2-6", 1-9"
- Steel construction
- 29 W x 24½ D x 45" H

*Available in other configurations and colors

Crash Carts



HLFA3027E06*

- 6 drawers: 1-3", 1-6" and 1-9"
- Aluminum
- 37½ W x 22½ D x 38½" H



MPH01W2000*

- 1-touch breakaway seal
- Constructed of hybrid steel and polymer
- 26 W x 33 D x 45" H

Ask about
our Rapid
Response
Trays



MPH01WML6*

- 6 drawers: 4-3", 1-6" 1-9"
- Steel construction
- 29 W x 24½ D x 42" H

*Available in other configurations and colors

Suture Procedure Carts



BNT30820

- Includes 5 trays and 4 side pockets
- Includes casters
- 15 W x 16 D x 29" H



MKA12810

- 6 shelves with 45° angle to keep boxes in place and 3 full-extension drawers
- Large storage compartment with clear sliding door with lock
- 27¼ W x 20 D x 35½" H



MDRSRSCS

- 5 adjustable shelves
- 2 tempered glass doors
- 35 W x 23½ D x 60" H

Cath Lab

Hampers



- MDS80529**
- Foot pedal open
- Chrome finish, metal lid
- 20 W x 18 D x 38" H



- MDS80529P**
- Foot pedal open
- Chrome finish, plastic lid
- 20 W x 18 D x 38" H



- RBW694***
- Double medium-duty hamper
- Chrome finish, plastic lid
- 39½ L x 17¼ W x 35" H

*Available in other colors

Waste Receptacles



- EVSSTC2305RL**
- 23-gal.
- Blue
- Rectangle

I.V. Poles



- MDS80500**
- Economical 5-leg pole
- Hammertone base
- Twist lock height adjustment



- MDS80600**
- Heavy-duty, 6-leg pole
- Quick-release casters
- Stainless steel height adjustable pole



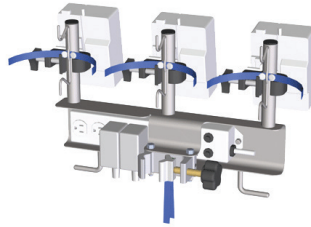
- MDSP10906**
- Interlocking base
- Clearview hook
- Stainless steel

Cath Lab

I.V. Pole Accessories



- PEDP1080F**
- Holds up to 6 pumps
 - Includes universal clamp



- PEDP1080G**
- Holds up to 3 pumps
 - Includes universal clamp



- PEDP3401**
- Hospital grade
 - 15-ft. cord
 - Stainless steel construction

Lighting



- MDR50SC**
- Cool operation for long use
 - Halogen bulb
 - Ceiling mount included



- MDR65CMSCST**
- Precisely positioned LEDs allow superior shadow control, depth of field and light intensity
 - Easy-to-use control pad includes 5 dimming levels and an endo mode
 - 36 LED bulbs



- MDRALED100SC**
- Ceiling mounted
 - 3-step dimmable LED system
 - Limitless arm rotation

Imaging Tables



- MDR85200***
- Welded steel construction
 - Built-in, hinged, 10 x 10" drop window
 - 450-lb. weight capacity

*Available in other colors



- OAK65258***
- Sliding cardio panel to adjust the opening to the size needed
 - 22-38" H adjustment
 - 550-lb. weight capacity



- OAK67375***
- Adjustable height from 22-38" for safe wheelchair transfer and ergonomic working heights
 - Central base locking system
 - 550-lb. weight capacity

Instrument Tables



- MPH08MCM508***
- Includes lower shelf
- 3" casters
- 24 L x 60 W x 34" H



- MPH08MCM517***
- Includes H-brace
- 3" casters
- 24 L x 60 W x 34" H



- PEDSG98SS***
- Includes lower shelf
- 3" casters
- 36 L x 24 W x 34" H

*Available in other sizes

Space Station Tables



- PEDCDS3060**
- Tuck away shelf
- Stainless steel
- 30 D x 60 W x 34" H, 20 D x 60" W top shelf



- PEDCDS3072**
- Tuck away shelf
- Stainless steel
- 30 D x 72 W x 34" H, 20 D x 72" W top shelf



- PEDCDS3072ADJ**
- Tuck away shelf
- Electronic height adjustability
- 30 D x 72 W x 34" H, 20 D x 72" W top shelf

Kick Buckets



- MPH08190**
- 13-qt. kick bucket
- Wall guard
- 14½" diameter



- MPH08MCM540**
- 12-qt. kick bucket
- Wall guard
- 13½" diameter



- PEDP1020SS**
- 12-qt. kick bucket
- Wall guard
- 13½" diameter

Cath Lab

Mayo Stands



- MPH08771**
- Stainless steel
 - 20 W x 25" L tray
 - Foot-pedal operated, height adjustable



- MPH08MS02**
- Stainless steel
 - 16 W x 21" L tray
 - Foot-pedal operated lock adjusts height from 36–62"



- PEDP1066SS**
- Stainless steel
 - 16¼ W x 21¼" L tray
 - Foot-pedal operated lock height adjustable 36–62"

Solution Stands



- MPH0808SSHB**
- 8½-qt. each basin
 - Stainless steel
 - 29 W x 15¼ D x 34" H

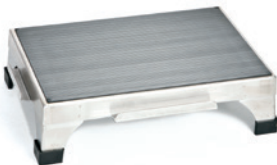


- MPH08MCM1000**
- 8½-qt. single basin with X brace
 - Stainless steel
 - 14 W x 14 D x 34" H

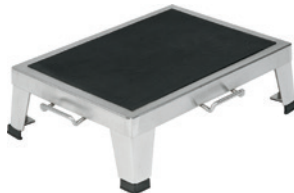


- PEDP1078SS**
- 7-qt. single basin
 - Stainless steel
 - 14 W x 14 D x 34" H

Stacking Step Stools



- MPH08MCM140**
- Stainless steel
 - Slip-resistant top and rubber floor tips
 - 14 D x 19 W x 6" H



- PEDP1015**
- Slip-resistant top
 - Heavy gauge legs and handles
 - 14 D x 19 W x 6" H



- PEDP1015TC**
- Transport cart holds up to 6 PEDP1015 Step Stools (sold separately)
 - 3" diameter Genesis maintenance-free swivel caster
 - 28 D x 14¼ W x 40½" H

Cath Lab

Vital Signs Monitors



- MDSM3ASNTCP**
 - Suitable for adult, pediatric, and neonatal patients
 - Auto/manual/continuous BP modes
 - Measures NIBP, Pulse, SpO₂, and Oral Temp with printer for recording of vitals



- MDSRVSBST1**
 - Vital signs monitor with blood pressure, SpO₂, and oral thermometer; 3 measurement modes available with averaging available (continuous, spot-check, triage)
 - Full connectivity and compatibility with major EMR systems
 - Available as desk and floor model

Transfer Boards



- PVCM600W**
 - Constructed of PVC
 - 550-lb. weight capacity
 - 70 L x 35½ W x 1¼" H



- MPH08MCM122**
 - 10 built-in hand holes
 - Full length, half length available
 - 72 L x 22 W x ¾" H

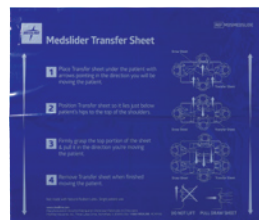


- CNSPTS1000KL**
 - Built-in scale to get weight while transferring
 - 550-lb. weight capacity
 - 71 L x 27½ W x 1" H

Transfer Sheets



- MDSSLIDE5848**
 - Disposable
 - 58 H x 48" W



- MDSMEDSLIDE**
 - Disposable
 - 33 H x 39" W

Emergency Room

Stretchers



- MDS750SPEC***
- Includes mattress, I.V. pole, side rails, and O₂ holder
 - 750-lb. weight capacity
 - 83 L x 29½" W



- MPHPT1001**
- Includes 4" comfort mattress, oxygen tank holder, 2-hook removable telescoping I.V. pole, and 6 I.V. pole sockets
 - 750-lb. weight capacity
 - 83¾ L x 33¾" W



- MONHRP800026R**
- Reconditioned Hill Rom P8000 Transtar with 6-wheel steering
 - Accessories include center column support, retractable push handles, and a quick-release O₂ holder
 - 700-lb. weight capacity

*Available in wide version

Digital Scales



- CNS1101KL**
- 1,000-lb. weight capacity
 - Optional height rod, includes BMI feature
 - Live handrails allow patient to hold onto handrails for stability while scale calculates



- MDR110611**
- 550-lb. weight capacity
 - Includes height rod and BMI function
 - Locks in LB or KG only

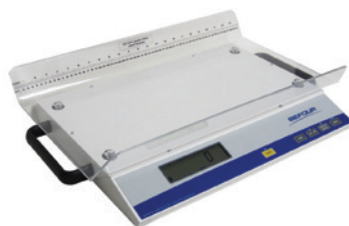


- MPH07HP4**
- 500-lb. weight capacity
 - Includes height rod and BMI function
 - EMR connectivity via USB

Baby Scales



- DETM130**
- 40-lb. weight capacity
 - Tray is removable for weighing toddlers
 - 13¾ L x 12¾ W x 1¼" H



- MDRMX202**
- 45-lb. weight capacity
 - Motion-lock technology for moving infants
 - 26 L x 16½ W x 7" H



- MPH07H2210KL**
- 45-lb. weight capacity
 - Includes motion detection and LB/KG lockout
 - 24 W x 3 H x 15¾" D

Emergency Room

Treatment Carts



- LGQQT35W21E3W***
- 4 drawers, 2-3", 1-6" and 1-9"; E Lock (electronic lock is not included)
 - 20 W x 27 D x 34½" H



- MPH01WMLA9***
- 6 drawers: 4-3", 1-6", 1-9"
 - Aluminum construction
 - 29 W x 24½ D x 42" H



- WTLALJR6CHY***
- 5 drawers, 3-3", 2-6"
 - Includes dual side slide out work surfaces
 - 22 W x 19½ D x 33" H

*Available in other colors and configurations

Hampers



- MDS80529**
- Foot pedal open
 - Chrome finish, metal lid
 - 20 W x 18 D x 38" H



- MDS80529P**
- Foot pedal open
 - Chrome finish, plastic lid
 - 20 W x 18 D x 38" H



- RBW694***
- Double medium-duty hamper
 - Chrome finish, plastic lid
 - 39½ L x 17¾ W x 35" H

*Available in other colors

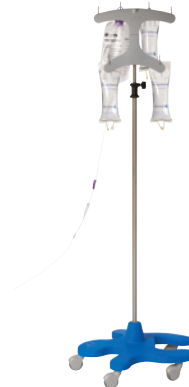
I.V. Poles



- MDS80500**
- Economical 5-leg pole
 - Hammertone base
 - Twist lock height adjustment



- MDS80600**
- Heavy-duty, 6-leg pole
 - Quick-release casters
 - Stainless steel height adjustable pole



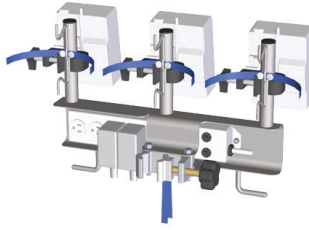
- MDSP10906**
- Interlocking base
 - Clearview hook
 - Stainless steel

Emergency Room

I.V. Pole Accessories



- PEDP1080F**
- Holds up to 6 pumps
 - Includes universal clamp



- PEDP1080G**
- Holds up to 3 pumps
 - Includes universal clamp



- PEDP3401**
- Hospital grade
 - 15-ft. cord
 - Stainless steel construction

Integrated Diagnostics Systems



- MDS36533020B**
- Wall mounted
 - Nonslip, ergonomically-designed handles offer continuously adjustable brightness
 - Includes LED EliteVue otoscope, Xenon L2 ophthalmoscope, specula dispenser, oral thermometer, and manual aneroid



- MDS36533023**
- Wall mounted
 - Nonslip, ergonomically-designed handles offer continuously adjustable brightness
 - Includes Xenon EliteVue otoscope, Xenon L2 ophthalmoscope, and specula dispenser

Bladder Scanners



- MDSB10750**
- 3D sector scan, 2.6 Mhz ultrasound frequency, B-mode scan
 - Includes printer
 - 7¹⁹/₂₀ W x 2³/₈ L x 4¹/₁₆ H



- MDSB10900**
- Dual frequency, 2 Mhz, 3.4 MHz ultrasound frequency, B-mode scan, scan angle: 120°, penetration depth: 230 mm
 - Includes printer
 - 9 W x 2¹/₄ D x 2" H

Emergency Room

Patient Communication Boards



- MDRPIB1218***
 - Customizable
 - Tempered glass surface
 - 12 W x 18 H x 1½" D



- MDRPIB1620***
 - Customizable
 - Tempered glass surface
 - 16 W x 20 H x 1½" D



- MDRPIB3624***
 - Customizable
 - Tempered glass surface
 - 36 W x 24 H x 1½" D

*Available in other configurations

Workstation on Wheels



- ALTCLP0141***
 - Laptop cart
 - Rectangle shape
 - Height adjustment: 28½–46½"



- ALTHC6P50141B***
 - Computer cart
 - Rectangle shape
 - Height adjustment: 28½–46½"



- ALTPC47P60141***
 - Computer cart
 - Kidney shape
 - Height adjustment: 28½–46½"

*Available in other configurations

Blanket Warmers



- ESYEC1540**
 - 98–200°F temperature range
 - 15.4-cu. ft. dual chamber, 40–45 blanket capacity
 - 23¾ W x 33 D x 72¼ H



- ESYEC1850BL**
 - Temperature range, fluid chamber: 90–150°F, bottom chamber: 90–160°F
 - 18.5-cu. ft. dual chamber, 30–40 blanket capacity, 30 1-L bottles or 36 1-L bags
 - 30 W x 28½ D x 75" H



- ESYEC750**
 - 90–160°F temperature range
 - 7.5-cu. ft., 20–25 blanket capacity
 - 24 W x 25¾ D x 35½ H

Emergency Room

Crash Carts



- HLFA3027E06***
- 6 drawers: 1-3", 1-6" and 1-9"
 - Aluminum
 - 37½ W x 22½ D x 38½" H



- MPH01W2000***
- 1-touch breakaway seal
 - Constructed of hybrid steel and polymer
 - 26 W x 33 D x 45" H

Ask about
our Rapid
Response
Trays



- MPH01WML6***
- 6 drawers: 4-3", 1-6" 1-9"
 - Steel construction
 - 29 W x 24½ D x 42" H

*Available in other configurations and colors

Physician Stools



- MDR2135SBG***
- Pneumatic height adjustable 19-24"
 - Vinyl upholstery with composite base
 - 250-lb. weight capacity



- MDR505B***
- Pneumatic height adjustable 19-24"
 - Vinyl upholstery with aluminum base
 - 250-lb. weight capacity



- MDR505***
- Pneumatic height adjustable 17¾-24½"
 - No back; vinyl upholstery with aluminum base
 - 250-lb. weight capacity

*Available in other colors

Wheelchairs



- MDS806250D**
- 300-lb. weight capacity
 - 18" W
 - Includes removable desk length arms and swing-away leg rest



- MDS806300EV**
- 300-lb. weight capacity
 - 18" W
 - Includes removable desk length arms and elevating leg rest



- MDS806950**
- 500-lb. weight capacity
 - 33½" W
 - Includes removable desk length arms and elevating leg rest

EVS Closet

Walk-Behind Floor Scrubbers



- EVSMR20SLB1**
- 20"
- 155AH lead acid batteries
- On board charger



- KNA98413840**
- 20"
- BD 50/50
- On board charger

Various configurations available

Wet-Dry Vacuums



- KNA1103494**
- 18-gal.
- Crushproof house



- KNA1428609**
- 12-gal.
- Larger back wheels for easy transport

I-Mops



- EVSIMOP2**
- 18"
- 2 solution tanks



- EVSIMOPXLT**
- 18"
- Turbo battery for increased productivity; 1 set of 2 batteries
- 2 solution tanks



- EVSIMOPXXLT**
- 24"
- Turbo battery for increased productivity; 1 set of 2 batteries
- 2 solution tanks

EVS Closet

Housekeeping Carts



- MPHMCEC02**
- Convenient EVS mobile workstation
 - Short base
 - Economy model



- EVSCART250**
- Lockable hood
 - Lockable front door
 - Adjustable shelf



- MPHMCPLUS1**
- Convenient EVS mobile workstation
 - Large base
 - 1 tower storage, 1 tower collection

Wet Floor Signs



- EVSTOOL902**
- Pop-up cone
 - 20" H
 - 3 languages



- EVSBC1012**
- Banana cone
 - 23½" H
 - Stackable



- EVS9152**
- Yellow sign
 - 24¾" H
 - 2 languages

Hospital Room

Hampers



- MDS80529**
- Foot pedal open
 - Chrome finish, metal lid
 - 20 W x 18 D x 38" H



- MDS80529P**
- Foot pedal open
 - Chrome finish, plastic lid
 - 20 W x 18 D x 38" H



- RBW694***
- Double medium-duty hamper
 - Chrome finish, plastic lid
 - 39½ L x 17¼ W x 35" H

*Available in other colors

Waste Baskets



- BRW35266**
- 32-qt. square bin
 - White
 - 11½ W x 12½ D x 18¼" H



- MPHP24R**
- 32-qt. round bin
 - White
 - 11½ W x 24" H



- UMESS1475**
- 48-qt. square bin
 - Stainless steel
 - 14 W x 13 D x 23½" H

Workstation on Wheels



- ALTCLP0141***
- Laptop cart
 - Rectangle shape
 - Height adjustment: 28½–46½"



- ALTHC6P50141B***
- Computer cart
 - Rectangle shape
 - Height adjustment: 28½–46½"



- ALTPC47P60141***
- Computer cart
 - Kidney shape
 - Height adjustment: 28½–46½"

*Available in other configurations

Hospital Room

Hospital Beds



- MONHRP1700R1**
- Reconditioned Hill Rom Advanta with scale
 - 500-lb. weight capacity



- MDRBEAM14002**
- Amico Apollo MS with scale
 - Includes mattress and scale in bed
 - 500-lb. weight capacity



- MDR1055043BEI**
- NOA SCE+ bed with scale
 - Features electronic brake and digital nurse panel with real time information
 - 600-lb. weight capacity

Recliners



- CMPALOMOC10**
- Power recliner with swing-away arms and comfort padding, includes Trendelenburg, swing-away arms, 2 side tables
 - Choose from straight or wing back
 - 32¾ W x 41½ D x 47" H



- CMP65PT09**
- Power recliner with swing-away arms
 - Includes a side table, foot tray, and push handle
 - 32¾ W x 41½ D x 47" H



- CMP67PT09**
- Wall hugger infinite position recline mechanism
 - Includes a foldaway side table, self-storing foot tray, and push handle
 - 32¾ W x 40½ D x 49½" H; 300-lb. weight capacity

Overbed Tables



- MDRAMIOBT1P**
- Peanut thermofoil top with spill guard edge
 - 100-lb. weight capacity
 - 32 L x 17" W



- MDROTFTCLSGU**
- Candelight thermofoil flip top with accessories; quick ship
 - 100-lb. weight capacity
 - Table top: 17 W x 32" L; flip top: 13½ L x 17" W



- MDRAMOBTWBL**
- Whiteboard laminate top
 - 100-lb. weight capacity
 - 32 L x 17" W

Hospital Room

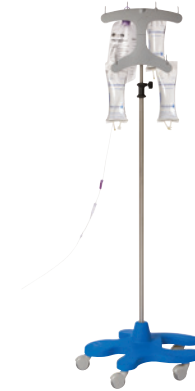
I.V. Poles



- MDS80500**
- Economical 5-leg pole
- Hammertone base
- Twist lock height adjustment



- MDS80600**
- Heavy-duty, 6-leg pole
- Quick-release casters
- Stainless steel height adjustable pole

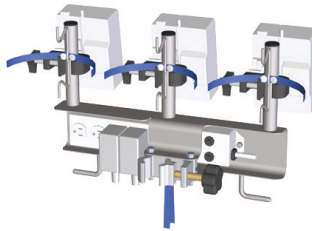


- MDSP10906**
- Interlocking base
- Clearview hook
- Stainless steel

I.V. Pole Accessories



- PEDP1080F**
- Holds up to 6 pumps
- Includes universal clamp



- PEDP1080G**
- Holds up to 3 pumps
- Includes universal clamp



- PEDP3401**
- Hospital grade
- 15-ft. cord
- Stainless steel construction

Integrated Diagnostics Systems



- MDS36533020B**
- Wall mounted
- Nonslip, ergonomically designed handles offer continuously adjustable brightness
- Includes LED EliteVue otoscope, Xenon L2 ophthalmoscope, specula dispenser, oral thermometer, and manual aneroid



- MDS36533023**
- Wall mounted
- Nonslip, ergonomically designed handles offer continuously adjustable brightness
- Includes Xenon EliteVue otoscope, Xenon L2 ophthalmoscope, and specula dispenser

Hospital Room

Vital Signs Monitors



MDSM3ASNTCP

- Suitable for adult, pediatric, and neonatal patients
- Auto/manual/continuous BP modes
- Measures NIBP, Pulse, SpO₂, and Oral Temp with printer for recording of vitals



MDSRVSBST1

- Vital signs monitor with blood pressure, SpO₂, and oral thermometer; 3 measurement modes available with averaging available (continuous, spot-check, triage)
- Full connectivity and compatibility with major EMR systems
- Available as desk and floor model

Patient Lifts



MDS700EL

- Fully powered Total Mobile lift with powered base
- 700-lb. capacity
- Controls are easy-to-operate and common between mobile lifts



MDS500SA

- Fully powered Stand-Assist lift with powered base
- 500-lb. weight capacity
- Controls are easy-to-operate and common between mobile lifts



ERGLUNA

- Luna Overhead Patient Lift by Bestcare
- 600-lb. or 1,000-lb. capacity
- Custom tracking systems for each room

Patient Communication Boards



MDRPIB1218*

- Customizable
- Tempered glass surface
- 12 W x 18 H x 1½" D



MDRPIB1620*

- Customizable
- Tempered glass surface
- 16 W x 20 H x 1½" D



MDRPIB3624*

- Customizable
- Tempered glass surface
- 36 W x 24 H x 1½" D

*Available in other configurations

Imaging Room

Aprons



WOL6502320*

- Easy-wrap apron
- 0.5 mm lead protection
- Armholes help bring protection up close to armpits for better coverage



WOL68099LW23*

- Quick-drop apron
- 0.5 mm lead protection
- Shoulder tabs and wrap around tabs help keep apron secure



WOL66083CB23*

- Apron and vest
- 0.5 mm lead protection in the front, 0.3 mm protection in the back
- 2-piece set

*Available in other colors and sizes

Apron Racks



WOL16400

- Wall mounted
- Set for a pair of gloves and 1 apron
- 16 H x 8 D x 28" W



WOL16410

- Wall mounted
- Holds 5 aprons
- 4 $\frac{1}{8}$ " H x 23 $\frac{1}{2}$ " D x 17" W



WOL16411

- Free standing
- Holds 10 aprons
- 54 W x 51 H x 20" D

X-Ray Accessories



WOL75070*

- Nylon outer
- 0.5 mm protective core
- Held in place by an adjustable hook & loop



WOL12419

- Molded lead gloves
- Supple enough to pick up small objects
- 12" L



WOL19110XR

- Illuminated
- Steel
- 12 L x 7 H x 2 $\frac{1}{2}$ " W

*Available in other colors

Imaging Room

Glasses



- WOL14130BK***
- Fits over any glasses
 - Side protection
 - Fits any size



- WOL14133BY***
- Wraparound style
 - Hi-impact TR-90 nylon
 - Small/medium size



- WOL14139BK***
- Wraparound style
 - Hi-impact TR-90 nylon
 - Medium size

*Available in other colors and styles

Mobile Radiation Shields



- WOL23111**
- Mobile barrier
 - Height adjustable 33–48"
 - 26¾ W x 18 D x 48" H



- WOL56603W***
- Viewing area 24 H x 30" W
 - Clear viewing panel has 0.5 mm lead protection
 - Locking casters



- WOL56610**
- Clear viewing panel has 0.5 mm lead protection on top portion, bottom portion is 1 mm
 - Locking casters
 - Height adjustable 45¼–74"

*Available in other sizes

MRI Conditional Carts



- HLFMR6B***
- 6 drawers 1–4", 2–3", 2–6½", 1–9¾"
 - Plastic top
 - Push handles



- HLFMR7KMAN***
- 7 drawers 1–4", 4–3¼", 1–6½", 1–9¾"
 - Aluminum 3-tier back rail
 - Push handles



- HLFMRN6K***
- 7 drawers 1–4", 2–3¼", 2–6½", 1–9¾"
 - Plastic top and push handles
 - Narrow width of 20"

*Available in other sizes and configurations

Imaging Room

MRI Safe I.V. Poles



- BLK7792MRC**
- 2 hooks
 - 5 legs
 - Stainless steel



- BLK7792NM4C**
- 4 hooks
 - 5 legs
 - Stainless steel

MRI Safe Foot Stool



- BLK7757SSHR**
- 300-lb. weight capacity
 - Stainless steel
 - 18 W x 23 H x 8" D

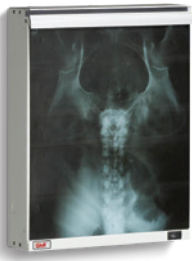


- BLK7761SS**
- 300-lb. weight capacity
 - Stainless steel
 - 30 W x 12 D x 8" H



- BLK7764MRHR**
- 350-lb. weight capacity
 - Double step stool and dual handrails
 - 12 W x 36 D x 41" H

X-Ray Illuminators



- WOL29601***
- Econoline illuminator
 - 2 15-watt bulb illuminators
 - 14 W x 17" H viewing area



- WOL29422***
- 4 lamps per viewing area
 - Trimline
 - 14 W x 17" H viewing area



- WOL21504MS2***
- Desk-style seating for viewing
 - High-grade welded steel
 - 65 H x 32 W x 20" D

*Available in other configurations

Imaging Room

X-Ray Shields



- WOL56612**
- Clear viewing panel has 0.5 mm lead protection
 - Height adjustable
 - Viewing area 24 W x 48" H



- WOL56160**
- Sliding arms accommodate sensor sizes from 8½–19½"
 - Folds for easy storage
 - Includes provisions to hang unit on wall when folded



- WOL56148**
- Weight bearing mobile DR panel protector
 - 750-lb. weight capacity
 - 14 W x 17" H

Imaging Accessories



- WOL14110**
- Set of 7 (includes 1 block, 1 large triangle, 2 small triangles, 2 wedges, and 1 circle block)
 - Non-absorbant, non-flammable foam plastic



- WOL50134D**
- 6 to 7 letters
 - Polystyrene



- WOL50171**
- L and R markers
 - Left is blue, right is red
 - Polystyrene



Kitchen/Cafeteria

Bus Boxes



DINBT710

- Durable high-density polyethylene (HDPE) construction, freezer safe
- Container only
- 21¼ L x 17¼ D x 7" H



DINBTL10

- Durable high-density polyethylene (HDPE) construction, freezer safe
- Lid for bus boxes

Bus Carts



ROYBC4019GRY

- Dual molded handles for greater maneuverability; fits bus boxes
- 130-lb. weight capacity
- 32¾ L x 16½ W x 37¾" D



ROYBC8162BLK

- Dual molded handles for greater maneuverability; fits bus boxes
- 130-lb. weight capacity
- 32 L x 16½ W x 36¾" D



ROYBC8162GRY

- Dual molded handles for greater maneuverability; fits bus boxes
- 130-lb. weight capacity
- 32 L x 16½ W x 36¾" D

Meal Delivery Carts



CMF1520S10191

- Durable plastic and rust resistant
- Premium casters and rattle-free molded tray rails for quiet delivery
- Holds 15 W x 20" L trays; 10 tray capacity



CMFMDC1418T16

- Durable plastic and rust resistant
- Premium casters and rattle-free molded tray rails for quiet delivery
- Holds 14 W x 18" L trays; 16 tray capacity



CMFMDC1520S20

- Durable plastic and rust resistant
- Premium casters and rattle-free molded tray rails for quiet delivery
- Holds 15 W x 20" L trays; 20 tray capacity

Kitchen/Cafeteria

Tray Carts



- MDRQTC19**
- 19 tray capacity
 - Chrome finish
 - 18 W x 30 L x 39" H



- MDRQTC31**
- 31 tray capacity
 - Chrome finish
 - 18 W x 30 L x 69" H



- MDRQTC39**
- 39 tray capacity
 - Chrome finish
 - 21 W x 30 L x 69" H

Trays



- DINTC1014RED**
- Scratch-resistant basket weave surface to reduce slippage
 - Lightweight and durable
 - 10 W x 14" L



- DINTC1418BLK**
- Scratch-resistant basket weave surface to reduce slippage
 - Lightweight and durable
 - 14 W x 18" L



- MDRQ1826TR**
- Constructed of fiberglass reinforced thermoset
 - 200-lb. weight capacity
 - 18 W x 16 L x 1½" D

Stainless Steel Utility Carts



- LKS726***
- 700-lb. weight capacity
 - 32½ W x 19¾ D x 34½" H



- MPH311***
- 300-lb. weight capacity
 - 16¼ W x 27½ L x 32¾" H



- MPH526***
- 500-lb. weight capacity
 - 19 W x 31 L x 34¾" H

*Available in other sizes

Kitchen/Cafeteria

Cup Dispenser



SJC3400P

- Adjusts to dispense multiple cup sizes easily and safely without damaging the cups
- Mounting bracket will work on coolers or any flat surface
- Compatible for 12–24-oz. cups

Food Scales



DETPS4

- Molded poly enclosure with stainless steel commodity tray and sealed membrane keypad
- 4-lb. weight capacity
- 5%_o W x 6%_o D x 1½" H



OTC360427

- Convenient tare function
- Battery included
- 11-lb. weight capacity



MDR53494

- Can weigh in grams, pounds, ounces
- Removable stainless steel weighing platform
- 2,000 g weight capacity

Labor & Delivery

Hospital Beds



- MONHRP37014R1**
- Reconditioned Hill Rom Affinity IV labor and delivery bed
 - 500-lb. weight capacity



- MONHRP37003R1**
- Reconditioned Hill Rom Affinity III labor and delivery bed
 - 500-lb. weight capacity

Baby Scales



- DETM130**
- 40-lb. weight capacity
 - Tray is removable for weighing toddlers
 - 13 $\frac{3}{16}$ " L x 12 $\frac{1}{16}$ " W x 1 $\frac{1}{16}$ " H



- MDRMX202**
- 45-lb. weight capacity
 - Motionlock technology for moving infants
 - 26 W x 16 $\frac{1}{2}$ D x 7" H



- MPH07H2210KL**
- 45-lb. weight capacity
 - Includes motion detection and LB/KG lockout
 - 24 W x 15 $\frac{3}{8}$ D x 3" H

Bassinets



- MDR907285**
- Quiet hinge system
 - Constructed of reinforced, heavy-gauge, polished stainless steel
 - 31 L x 17 $\frac{1}{2}$ W x 37 $\frac{3}{4}$ " H



- MPHBD3-1MO**
- 3-drawer configuration
 - Self-closing drawer slides
 - Tub and mattress sold separately
 - 21 L x 32 W x 37" H



- MPHBDD-1HM**
- 1-drawer, 1-cupboard configuration
 - Self-closing drawer slides
 - Tub and mattress sold separately
 - 21 L x 32 W x 37" H

Labor & Delivery

Bedside Cabinets



- KWALBBS11R***
 - 1 door, 1 drawer configuration
 - Door hinges are self-closing
 - 21¼ W x 19¼ D x 30" H



- KWACABS30HCCT**
 - 3 drawers, Corian top, with casters
 - Moisture impervious finish
 - 21 W x 20½ D x 30" H



- POPBC1D1DMQS**
 - 1 door, 1 drawer configuration, flat drawer style
 - High-pressure laminate
 - 21½ W x 18¾ D x 29¼" H

*Available in other colors

Recliners



- CMP65PT09**
 - Power recliner with swing-away arms
 - Includes a side table, foot tray, and push handle
 - 32¾ W x 41½ D x 47" H



- CMP67PT09**
 - Wall hugger infinite position recline mechanism
 - Includes a foldaway side table, self-storing foot tray, and push handle
 - 32¾ W x 40½ D x 49½" H; 300-lb. weight capacity



- CMPALOMOC10**
 - Power recliner with swing-away arms and comfort padding, includes Trendelenburg, swing-away arms, 2 side tables
 - Choose from straight or wing back
 - 32¾ W x 41½ D x 47" H

Overbed Tables



- MDRAMOBTWBL**
 - Whiteboard laminate top, seamless and easy-to-clean
 - 100-lb. weight capacity
 - 32 L x 17" W



- MDROTFTMCSGU**
 - Medium cherry thermofoil flip top with accessories
 - 100-lb. weight capacity; table top: 17 W X 32" L, flip top: 13½ L X 17" W
 - Quick ship



- MDRAMIOBT1P***
 - Peanut thermofoil top with spill guard edge
 - 100-lb. weight capacity
 - 32 L x 17" W

*Available in other colors

Labor & Delivery

Blanket Warmers



ESYDC150

- 90–160°F temperature range
- 1.5-cu. ft. 3–4 blanket capacity
- 18½ W x 21½ D x 16¾" H



ESYDC350

- 90–160°F temperature range
- 3.5-cu. ft. 10–12 blanket capacity
- 18½ W x 24½ D x 27¾" H



ESYDC750

- 90–160°F temperature range
- 7.5-cu. ft. 20–25 blanket capacity
- 24 W x 27 D x 34¾" H

Cribs



MDRE1981CG

- Easy access safety gates
- Solid pan sleeping system in a non-helical design
- 30 W x 60 L x 61" H



MDRE2065FWCR

- Easy access safety gates
- Solid pan sleeping system in a non-helical design
- 24 W x 36 L x 44" H



PED500SPEC

- Dual-action release handle is childproof and easy to operate
- 200-lb. weight capacity
- 60 L x 30¼ W x 59½" H

Fetal Monitoring Carts



MPHFMC211-MC

- 2 drawers, 2 pullout tables, 1 drop-down drawer
- Includes integrated cable management, backdoor access, and night-time charting light
- 26 D x 22 W x 40¾" H



MPHFMC21-CL

- 2 drawers, 2 pullout tables, 1 drop-down drawer
- Includes integrated cable management, backdoor access, and night-time charting light
- 26 D x 22 W x 40¾" H



MPHFMC2-HM

- 2 drawers, 2 pullout tables
- Includes integrated cable management, backdoor access, and night-time charting light
- 26 D x 22 W x 40¾" H

Labor & Delivery

Hampers



- MDS80529**
- Foot pedal open
 - Chrome finish, metal lid
 - 20 W x 18 D x 38" H



- MDS80529P**
- Foot pedal open
 - Chrome finish, plastic lid
 - 20 W x 18 D x 38" H



- RBW694***
- Double medium-duty hamper
 - Chrome finish, plastic lid
 - 39½ L x 17¼ W x 35" H

*Available in other colors

Waste Baskets



- BRW35266**
- 32-qt. square bin
 - White
 - 11½ W x 12½ D x 18¾" H



- MPHP24R**
- 32-qt. round bin
 - White
 - 11½ W x 24" H



- UMESS1475**
- 48-qt. square bin
 - Stainless steel
 - 14 W x 13 D x 23½" H

Stainless Steel Utility Carts



- LKS726***
- 700-lb. weight capacity
 - 32½ W x 19¾ D x 34½" H



- MPH311***
- 300-lb. weight capacity
 - 16¼ W x 27½ L x 3¾" H



- MPH526***
- 500-lb. weight capacity
 - 19 W x 31 L x 34¾" H

*Available in other sizes

Labor & Delivery

Fetal Dopplers and Fetal Monitor



MDS80PPLERF

- Headphone plug for clinician convenience and hearing-impaired individuals
- Simple 1-button operation
- Interchangeable water proof fetal and vascular probes; 2MHz fetal probe included



MDSSD3F

- Bright OLED screen with real-time fetal heart rate display
- Real-time monitoring for daily use; record and engage with audio playback and numeric display
- Probes included: 2 MHz and 3 MHz



MDSFETALF6

- 10" color touchscreen, 1 button operation with 60 hours of data storage
- Probe rack for easy positioning of transducers; color-coded accessory interfaces for quick plug-and-play
- Ability to monitor twin fetuses

I.V. Poles



MDS80500

- Economical 5-leg pole
- Hammertone base
- Twist lock height adjustment



MDS80600

- Heavy-duty, 6-leg pole
- Quick-release casters
- Stainless steel height adjustable pole



MDSP10906

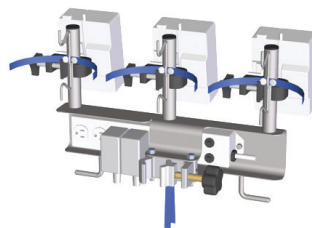
- Interlocking base
- Clearview hook
- Stainless steel

I.V. Pole Accessories



PEDP1080F

- Holds up to 6 pumps
- Includes universal clamp



PEDP1080G

- Holds up to 3 pumps
- Includes universal clamp



PEDP3401

- Hospital grade
- 15-ft. cord
- Stainless steel construction

Labor & Delivery

Patient Communication Boards



MDRPIB1218*

- Customizable
- Tempered glass surface
- 12 W x 18 H x 1½" D



MDRPIB1620*

- Customizable
- Tempered glass surface
- 16 W x 20 H x 1½" D



MDRPIB3624*

- Customizable
- Tempered glass surface
- 36 W x 24 H x 1½" D

*Available in other configurations

Ultrasounds



MDSU60

- Compact, lightweight design, and integrated battery to aid mobility
- Speckle reduction and spatial compounding to enhance contrast resolution and color imaging to aid diagnostics
- 15" high-resolution LCD display



MDSAX7

- 128-channel hardware architecture offers exceptional processing power
- 3D/4D capability with eFace feature to automate volume editing
- 15" HD LCD monitor

Workstation on Wheels



ALTCLP0141*

- Laptop cart
- Rectangle shape
- Height adjustment: 28½–46½"



ALTHC6P50141B*

- Computer cart
- Rectangle shape
- Height adjustment: 28½–46½"



ALTPC47P60141*

- Computer cart
- Kidney shape
- Height adjustment: 28½–46½"

*Available in other configurations

Laboratory

Instrument Tables



- MPH08MCM508***
- Includes lower shelf
 - 3" casters
 - 24 L x 60 W x 34" H



- MPH08MCM517***
- Includes H-brace
 - 3" casters
 - 24 L x 60 W x 34" H



- PEDSG98SS***
- Includes lower shelf
 - 3" casters
 - 36 L x 24 W x 34" H

*Available in other sizes

Stainless Steel Utility Carts



- LKS726***
- 700-lb. weight capacity
 - 32½" W x 19¾" D x 34½" H



- MPH311***
- 300-lb. weight capacity
 - 16¾" W x 27½" L x 32¾" H



- MPH526***
- 500-lb. weight capacity
 - 19" W x 31" L x 34¾" H

*Available in other sizes

Suture Procedure Carts



- BNT30820**
- Includes 5 trays and 4 side pockets
 - Includes casters
 - 15 W x 16 D x 29" H



- MKA12810**
- 6 shelves with 45° angle to keep boxes in place and 3 full-extension drawers
 - Large storage compartment with clear sliding door with lock
 - 27¼ W x 20 D x 35½" H



- MDRSRSCS**
- 5 adjustable shelves
 - 2 tempered glass doors
 - 35 W x 23¾ D x 60" H

Laboratory

Hampers



- MDS80529**
- Foot pedal open
 - Chrome finish, metal lid
 - 20 W x 18 D x 38" H



- MDS80529P**
- Foot pedal open
 - Chrome finish, plastic lid
 - 20 W x 18 D x 38" H



- RBW694***
- Double medium-duty hamper
 - Chrome finish, plastic lid
 - 39½ L x 17¾ W x 35" H

*Available in other colors

Waste Baskets



- BRW35266**
- 32-qt. square bin
 - White
 - 11½ W x 12½ D x 18¾" H



- MPHP24R**
- 32-qt. round bin
 - White
 - 11½ W x 24" H



- UMESS1475**
- 48-qt. square bin
 - Stainless steel
 - 14 W x 13 D x 23½" H

Mayo Stands



- MPH08771**
- Stainless steel
 - 20 W x 25" L tray
 - Foot-pedal operated, height adjustable



- MPH08MS02**
- Stainless steel
 - 16 W x 21" L tray
 - Foot-pedal operated lock adjusts height from 36–62"



- PEDP1066SS**
- Stainless steel
 - 16¾ W x 21¼" L tray
 - Foot-pedal operated lock height adjustable 36–62"

Laboratory

Solution Stands



- MPH0808SSHB**
- 8½-qt. each basin
 - Stainless steel
 - 29 W x 15¼ D x 34" H

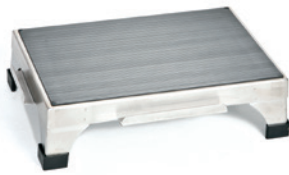


- MPH08MCM1000**
- 8½-qt. single basin with X brace
 - Stainless steel
 - 14 W x 14 D x 34" H



- PEDP1078SS**
- 7-qt. single basin
 - Stainless steel
 - 14 W x 14 D x 34" H

Stacking Step Stools



- MPH08MCM140**
- Stainless steel
 - Slip-resistant top and rubber floor tips
 - 14 W x 19 L x 6" H



- PEDP1015**
- Slip-resistant top
 - Heavy-gauge legs and handles
 - 14 W x 19 L x 6" H



- PEDP1015TC**
- Transport cart holds up to 6 PEDP1015 Step Stools (sold separately)
 - 3" diameter Genesis maintenance-free swivel caster
 - 28 D x 14¾ W x 40½" H

Physician Stools



- MDR2135SBG***
- Pneumatic height adjustable 19–24"
 - Vinyl upholstery with composite base
 - 250-lb. weight capacity



- MDR505B***
- Pneumatic height adjustable 19–24"
 - Vinyl upholstery with aluminum base
 - 250-lb. weight capacity



- MDR505***
- Pneumatic height adjustable 17¾–24½"
 - No back; vinyl upholstery with aluminum base
 - 250-lb. weight capacity

*Available in other colors

Laboratory

Storage Cabinets



- MPH08B70***
- 5 glass shelves
- Glass doors
- 35 $\frac{3}{8}$ " W x 16" D x 79 $\frac{1}{4}$ " H



- MPH08B701***
- 5 stainless steel shelves
- Glass doors
- 35 $\frac{3}{8}$ " W x 16" D x 79 $\frac{1}{4}$ " H



- MPH08B711***
- 5 glass shelves, adjustable every 5"
- Glass doors
- 48" W x 16" D x 78" H

*Available in other configurations

Centrifuge



- QBC0076009004**
- 6 tube capacity
- Standard tube holders spin 75 or 100 mm tubes (up to 10 mL)
- 5,500 RPM maximum

Digital Mini Tube Rotator



- BK1260750**
- For applications that require 360° rotation and adjustable mixing from 0–90° F
- The temperature range is 4–40° C for use in cold rooms and incubators at 4–18 rpm
- Supplied with a carousel for 36 x 1.5/2 mL tubes; other types of carousels are sold separately

Pharmacy/Vaccine Refrigerators



- HSBPH0404GADA**
- 4.6-cu. ft. capacity built-in under counter refrigerator
- Glass swing door
- 23 $\frac{3}{4}$ " W x 25 $\frac{1}{2}$ " D x 31 $\frac{15}{16}$ " H



- HSBPHHCRFC12G**
- 12-cu. ft. capacity (10 $\frac{1}{2}$ ref./17/10 freezer)
- Combo glass/solid door
- 23 $\frac{3}{4}$ " W x 26 $\frac{1}{2}$ " D x 80 $\frac{1}{4}$ " H

Locker Room

Benches



MDRGB1636S*

- Stainless steel
- Floor-mounted or free-standing
- 16 H x 36 W x 18" D



MDRGB1648S*

- Stainless steel
- Floor-mounted or free-standing
- 16 H x 48 W x 18" D



MDRGB1660S*

- Stainless steel
- Floor-mounted or free-standing
- 16 H x 60 W x 18" D

*Available in other styles and finishes

Lockers



HLWP12821AEFA*

- Includes hat shelf and 2 coat hooks and DigiTech electronic access lock
- Ships assembled
- 12 W x 18 D x 72" H



MDRU12882AHG*

- Double-tier, 1 wide
- Gray steel
- 12 W x 12 D x 78" H



HLWP1282ZAF*

- Includes 2 coat hooks and projecting finger pull handle
- Ships assembled
- 12 W x 18 D x 72" H

*Available in other sizes and colors

Digital Scales



CNS1101KL

- 1000-lb. weight capacity
- Optional height rod, includes BMI feature
- Live handrails allow patient to hold onto handrails for stability while scale calculates



MDR110611

- 550-lb. weight capacity
- Includes height rod and BMI function
- Locks in LB or KG only



MPH07HP4

- 500-lb. weight capacity
- Includes height rod and BMI function
- EMR connectivity via USB

Locker Room

Hampers



- MDS80529**
- Foot pedal open
- Chrome finish, metal lid
- 20 W x 18 D x 38" H



- MDS80529P**
- Foot pedal open
- Chrome finish, plastic lid
- 20 W x 18 D x 38" H



- RBW694***
- Double medium-duty hamper
- Chrome finish, plastic lid
- 39½ L x 17¾ W x 35" H

*Available in other colors

Scrub Carts



- MDRQ2436C46E***
- Enclosed on 3 sides
- Chrome
- 24 D x 36 W x 69" H



- MDRQWRC632436***
- Enclosed on 3 sides and 1 solid shelf
- Chrome
- 24 D x 36 L x 69" H



- MDRQDBS632436***
- Enclosed on 3 and 1 solid shelf with dolly base
- Chrome
- 24 D x 36 L x 70" H

*Available in other sizes and configurations

Mortuary

Autopsy Tables



MDR103610

- Includes instrument drawers and light fixture over work area
- Wall mounted
- 29 W x 114 L x 34" H



MDR103641

- Includes electrical outlet with waterproof cover
- Backflow protection
- 32 W x 104 L x 35" H

Custom mortuary layouts available

Body Lifts



MDRM678

- Battery operated
- 1,000-lb. weight capacity
- Hydraulic lift



MDRM678SP

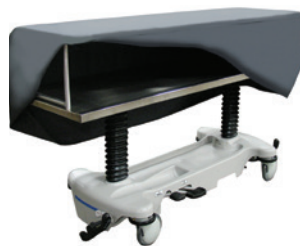
- Hand control for movements
- 1,000-lb. weight capacity
- Self-propelled lift

Cadaver Carriers



MDR600038H

- Hydraulic height adjustment
- 500-lb. weight capacity
- Front and rear elevation



MDR600039H

- Hydraulic height adjustment
- 500-lb. weight capacity
- Covered cadaver tray



MDR600040DS

- Foot pedal height adjustment
- 500-lb. weight capacity
- Double scissor lift

Mortuary

Refrigerators



- MDR1036R106**
- Includes vapor proof light with switch and digital thermometer
- 4-body capacity
- 77 W x 97 D x 79" H



- MDR1036R111**
- Includes vapor proof light with switch and digital thermometer
- 8-body capacity
- 153 W x 97 D x 80½" H



- MDR1036R115**
- Includes vapor proof light with switch and digital thermometer
- 2-body capacity
- 35 W x 88 D x 81" H

Stainless Steel Utility Carts



- LKS726***
- 700-lb. weight capacity
- 32½ W x 19¾ D x 34½" H



- MPH311***
- 300-lb. weight capacity
- 16¾ W x 27½ L x 32¾" H



- MPH526***
- 500-lb. weight capacity
- 19 W x 31 L x 34¾" H

*Available in other sizes

Organ Scales



- CNS3400KL**
- Stainless steel weighing surface
- Rechargeable battery
- 176-oz. weight capacity



- MDSPC50010**
- Water resistant to allow for thorough sanitizing
- 10-lb. weight capacity
- 12¾ L x 9¾ W x 5¾" H



- MPH07SD1**
- Automatic switch off
- 6.6-lb. weight capacity
- 8¾ W x 5½ H x 8¾" D

Nurses' Station

Crash Carts



- HLFA3027E06***
- 6 drawers: 1-3", 1-6" and 1-9"
 - Aluminum
 - 37 $\frac{1}{8}$ " W x 22 $\frac{1}{8}$ " D x 38 $\frac{1}{2}$ " H



- MPH01W2000***
- 1-touch breakaway seal
 - Constructed of hybrid steel and polymer
 - 26 W x 33 D x 45" H

Ask about
our Rapid
Response
Trays



- MPH01WML6***
- 6 drawers: 4-3", 1-6" 1-9"
 - Steel construction
 - 29 W x 24 $\frac{1}{2}$ " D x 42" H

*Available in other configurations and colors

Isolation Carts



- LKSKIT30-1Y***
- Aluminum cart
 - 4 drawers: 1-3", 3-9"
 - 33 W x 25 $\frac{1}{2}$ " D x 44 $\frac{3}{4}$ " H



- MPH01WMLA27***
- Aluminum cart
 - 4 drawers: 3-6", 1-9"
 - 29 W x 24 $\frac{1}{2}$ " D x 42" H



- MPH01WMLMA1***
- Aluminum cart
 - 4 drawers: 2-3", 1-6", 1-12"
 - 29 W x 24 $\frac{1}{2}$ " D x 39" H

*Available in other configurations and colors

Poly Utility Carts



- LKS2500**
- 300-lb. weight capacity
 - 3 shelves
 - Spill guard edge



- LKS2512**
- 500-lb. weight capacity
 - 3 shelves
 - Spill guard edge



- MDRQPC4026333**
- 500-lb. weight capacity
 - 3 shelves
 - 6" spill guard edge

Nurses' Station

Reception Desks



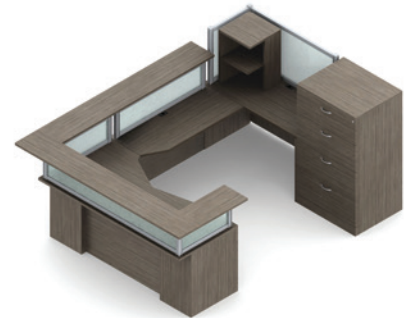
OFM55293WAL*

- Triple unit
- Silver base with walnut top
- 142 W x 45½ H x 71" D



OFM55312WAL*

- Double unit
- Silver base with walnut top
- 124¾ W x 45½ H x 49" D



GLOZRA521L*

- Multi-piece unit with plenty of storage and large work area
- Many different finish options
- 6 W x 9' D footprint, 30" counter height

*Available in other configurations, sizes, and colors

Vinyl Task Chairs



OFM241VAMDK66

- Adjustable foot ring and many back, seat, and arm adjustments settings
- Comes with 2 different height bases for a seat height of 25¾–29½" or 28¾–32½"
- 250-lb. weight capacity



OFM241VAMA606*

- Many ergonomic seat, back, and arm adjustments
- 19–22½" standard height
- 250-lb. weight capacity



OFM247VAM606*

- Multiple ergonomic options including synchronized back and seat adjustment
- 19½–23" standard height
- 400-lb. weight capacity

*Available in other colors

Nurses' Station

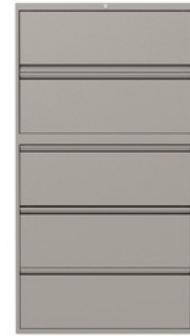
File Cabinets



- MDRLF6A36200***
- 2 drawers
 - Lateral
 - 36 W x 19¼ D x 28¾" H



- MDRLF6A42400***
- 4 drawers
 - Lateral
 - 42 W x 19 D x 53" H



- GLO1930P5F12***
- 5 drawers
 - Lateral
 - 19¼ D x 12¼" H drawers

*Available in other colors and sizes

Narcotics Cabinets



- UME7780**
- 2 door
 - 2 lock
 - 18½ W x 24 H x 12½" D



- UME7784**
- 1 door, 1 lock
 - Cam-style lock
 - 12 W x 7¼ H x 7" D



- MPH01WNCS2***
- Double door/double lock (both locks are keyed differently)
 - 3 adjustable or removable shelves
 - 12 W x 8 H x 15" D

*Available in other configurations and colors

Workstation on Wheels



- ALTCLP0141***
- Laptop cart
 - Rectangle shape
 - Height adjustment: 28½–46½"



- ALTHC6P50141B***
- Computer cart
 - Rectangle shape
 - Height adjustment: 28½–46½"



- ALTPC47P60141***
- Computer cart
 - Kidney shape
 - Height adjustment: 28½–46½"

*Available in other configurations

Nurses' Station

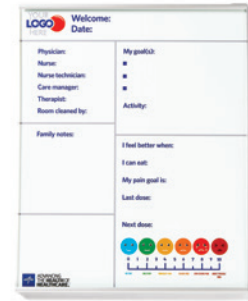
Whiteboards



- OFMESS8500**
- Magnetic
- Marker tray
- 36 W x 24" H



- OFMESS8501**
- Magnetic
- Marker tray
- 47 W x 30" H



- MDRPIB3624***
- Customizable
- Tempered glass surface
- 36 W x 24 H x 1½" D

*Available in other configurations

Blanket Warmers



- ESYDC150**
- 90–160°F temperature range
- 1.5-cu. ft. 3–4 blanket capacity
- 18½ W x 21½ D x 16¼" H



- ESYDC350**
- 90–160°F temperature range
- 3.5-cu. ft. 10–12 blanket capacity
- 18½ W x 24½ D x 27¼" H



- ESYDC750**
- 90–160°F temperature range
- 7.5-cu. ft. 20–25 blanket capacity
- 24 W x 27 D x 34¼" H

Waste Baskets



- BRW35266**
- 32-qt. square bin
- White
- 11½ W x 12½ D x 18¼" H



- MPHP24R**
- 32-qt. round bin
- White
- 11½ W x 24" H



- UMESS1475**
- 48-qt. square bin
- Stainless steel
- 14 W x 13 D x 23½" H

Office

Conference Tables



OFM33378WLT

- Solid elm wood top with walnut stain
- 10-gauge steel legs with an antique brown finish and 2" thick wood edge
- 39½ D x 78½ W x 30" H



OFM55118CHY*

- Sturdy steel frame and durable scratch-resistant cherry wood-look top
- Rounded corners
- 47¼ D x 93½ W x 29½" H



OFM55118MPL*

- Sturdy steel frame and durable scratch-resistant wood-like graphite top
- Adjustable leveling guides
- 47¼ D x 93½ W x 29¼" H

*Available in other colors

Office Chairs



MDRESS3011

- Fixed arms
- 25¼ D x 25¼" W and seat height adjustable: 16½–20"
- 250-lb. weight capacity



OFM257BLK

- Steel tube sled base
- 28½ D x 27½" W and seat height adjustable: 18¾–21¾"
- 350-lb. weight capacity



GLO6321STDV2

- 5 mechanisms to adjust arms, back, and tilt
- 24 D x 25½" W and seat height adjustable: 17½–22½"
- 350-lb. weight capacity

Desks



OFM77360CHRY

- Sturdy steel construction and leveling feet on all 4 corners
- 4 lockable side drawers and lockable center drawer
- 57¼ W x 29½ D x 29¼" H



SAFARD6030*

- 4 laminate finish options
- Surfaces are abrasion and stain resistant for durability
- 60 W x 30 D x 29½" H



GLOZ3660FB22*

- Multiple finish options available
- Box/box/file on left and right
- 60 W x 36 D x 30" H

*Available in other configurations

Office

File Cabinets



- MDRLF6A36200***
- 2 drawers
- Lateral
- 36 W x 19¼ D x 28¾" H



- MDRLF6A42400***
- 4 drawers
- Lateral
- 42 W x 19 D x 53" H



- GLO1930P5F12***
- 5 drawers
- Lateral
- 19¼ D x 12¼" H drawers

*Available in other colors and sizes

Waste Baskets



- BRW35266**
- 32-qt. square bin
- White
- 11½ W x 12½ D x 18¼" H



- MPHP24R**
- 32-qt. round bin
- White
- 11½ W x 24" H



- UMESS1475**
- 48-qt. square bin
- Stainless steel
- 14 W x 13 D x 23½" H

Whiteboards



- OFMESS8500**
- Magnetic
- Marker tray
- 36 W x 24" H



- OFMESS8501**
- Magnetic
- Marker tray
- 47 W x 30" H

Operating Room

Anesthesia Stools



- PEDP7000BGE***
 - Hydraulic height adjustable and articulating arm/wrist rests
 - Height adjustable 20¾–28¾"
 - 300-lb. weight capacity



- PEDT583CAT***
 - Includes adjustable arm rests
 - Height adjustable 24¾–34¾"
 - 300-lb. weight capacity



- PEDT584CAT***
 - Adjustable backrest
 - Height adjustable 24¾–34¾"
 - 300-lb. weight capacity

*Available in other colors

Surgeons Stools



- PEDP6000LAK***
 - Includes back
 - Height adjustable 20¾–28¾"
 - 300-lb. weight capacity



- PEDP6001PRLAK***
 - Hydraulic height adjustment and padded procedure rest
 - Height adjustable 20¾–28¾"
 - 300-lb. weight capacity



- PEDP7000BGE***
 - Hydraulic height adjustable and articulating arm/wrist rests
 - Height adjustable 20¾–28¾"
 - 300-lb. weight capacity

*Available in other colors

Bladder Scanners



- MDSB10750**
 - Includes printer and 5-year warranty
 - 3D sector scan, 2.6 Mhz ultrasound frequency, B-mode scan
 - 7¹/₂ W x 2³/₈ L x 4¹/₁₆"



- MDSB10900**
 - Includes printer and 5-year warranty
 - 3.4 MHz ultrasound frequency, B-mode scan, Industry leading penetration depth of 23 cm
 - 2 W x 9 H x 2¹/₄" D

Operating Room

Blanket Warmers



- ESYEC1540**
- 98–200°F temperature range
- 15.4-cu. ft. dual chamber, 40–45 blanket capacity
- 23³/₁₀ W x 33 D x 72¹/₁₀ H



- ESYEC1850BL**
- Temperature range, fluid chamber: 90–150°F, bottom chamber: 90–160°F
- 18.5-cu. ft. dual chamber, 30–40 blanket capacity, 30 1-L bottles or 36 1-L bags
- 30 W x 28¹/₂ D x 75" H



- ESYEC750**
- 90–160°F temperature range
- 7.5-cu. ft., 20–25 blanket capacity
- 24 W x 25³/₄ D x 35¹/₂ H

Anesthesia Carts



- HLF7456E**
- 6 drawers: 4–3", 1–6", 1–9"
- Steel construction and accessories included
- Overall dimensions with accessories 32 W x 22 D x 57" H



- MPH01WMLA9***
- 6 drawers: 4–3", 1–6", 1–9"
- Aluminum construction
- 29 W x 24¹/₂ D x 42" H



- WTLUXGK433669***
- 6 drawers: 3–3", 2–6", 1–9"
- Steel construction
- 29 W x 24¹/₂ D x 45" H

*Available in other configurations and colors

Crash Carts



- HLFA3027E06***
- 6 drawers: 1–3", 1–6" and 1-9"
- Aluminum
- 37³/₈ W x 22¹/₈ D x 38¹/₂ H



- MPH01W2000***
- 1-touch breakaway seal
- Constructed of hybrid steel and polymer
- 26 W x 33 D x 45" H

Ask about our Rapid Response Trays



- MPH01WML6***
- 6 drawers: 4-3", 1-6" 1-9"
- Steel construction
- 29 W x 24¹/₂ D x 42" H

*Available in other configurations and colors

Operating Room

Isolation Carts



- LKSKIT30-1Y***
- Aluminum cart
- 4 drawers: 1-3", 3-9" drawers
- 33 W x 25½ D x 44¾" H



- MPH01WMLA27***
- Aluminum cart
- 4 drawers: 3-6", 1-9"
- 29 W x 24½ D x 42" H



- MPH01WMLMA1***
- Aluminum cart
- 4 drawers: 2-3", 1-6", 1-12"
- 29 W x 24½ D x 39" H

*Available in other configurations and colors

Case Carts



- PEDCDS245C***
- Stainless steel
- Includes 2 shelves, bumper, lock, and exterior push handles
- 45 D x 28 W x 56" H



- PEDRCC242B***
- Includes biohazard wheel and scratch resistant windows
- High temp casters reduce push/pull force by 32%
- 46½ D x 27½ W x 41½" H



- PEDSCC245***
- Solid, sealed doors to withstand a cart wash
- Fully welded stainless steel
- 45½ D x 28½ W x 56" H

*Available in other sizes

Open Case Carts



- PEDCDS262C***
- Stainless steel
- Enclosed back
- 29¾ W x 29¾ D x 62" H



- PEDCDS270C***
- Stainless steel
- Fully welded construction
- 50½ W x 26 D x 65" H

*Available in other sizes



Operating Room

Stainless Steel Utility Carts



- LKS726***
- 700-lb. weight capacity
- 32 $\frac{5}{8}$ " W x 19 $\frac{3}{8}$ " D x 34 $\frac{1}{2}$ " H



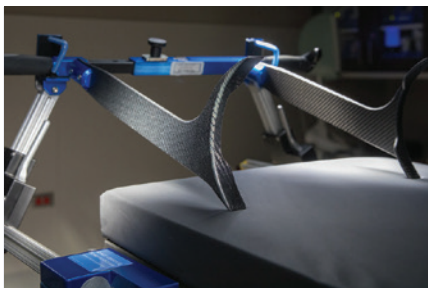
- MPH311***
- 300-lb. weight capacity
- 16 $\frac{1}{4}$ " W x 27 $\frac{1}{2}$ " L x 32 $\frac{1}{8}$ " H



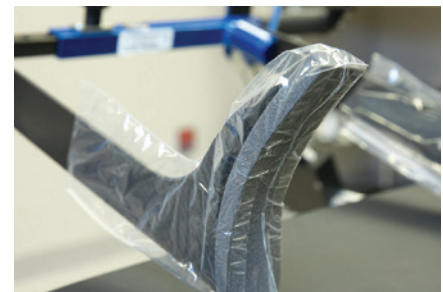
- MPH526***
- 500-lb. weight capacity
- 19" W x 31" L x 34 $\frac{3}{4}$ " H

*Available in other sizes

Clear Cervical Visualizer (CCV)



- MPHCCV**
- Provides enhanced intraoperative visualization of the lower cervical spine for more accurate diagnosis and improved surgical outcomes
- Gently pushes shoulders down to expose up to 2 to 3 more vertebrae for more accurate diagnosis
- Eliminates the need for staff to pull and hold patient arms, potentially causing bruising or soreness, and allows staff to leave the imaging room to reduce exposure to X-rays



- MPHGARDS**
- MRSA Shoulder Guards

Vital Signs Monitors and Patient Monitors



- MDSM3ASNTCP**
- Suitable for adult, pediatric, and neonatal patients
- Auto/manual/continuous BP modes
- Measures NIBP, Pulse, SpO₂, and Oral Temp with printer for recording of vitals



- MDSRVSBST1**
- Vital signs monitor with blood pressure, SpO₂, and oral thermometer; 3 measurement modes available with averaging available (continuous, spot-check, triage)
- Full connectivity and compatibility with major EMR systems
- Available as desk and floor model



- MDSIM60PTWC**
- Provides essential measurements of patient vitals for continuous monitoring
- Includes: 3/5 lead ECG, SpO₂, NIBP, skin temp, printer, CO₂ (built-in), and wifi connectivity
- 10 $\frac{3}{8}$ " high-resolution touchscreen display

Operating Room

Electrosurgical Generator



ESUIDS310

- No calibration required
- Coagulation modes: pinpoint coagulation, spray coagulation
- Uses digital technology to reduce instrument sticking and to minimize tissue destruction

Integrated Diagnostics Systems



MDS36533020B

- Wall mounted
- Nonslip, ergonomically-designed handles offer continuously adjustable brightness
- Includes LED EliteVue otoscope, Xenon L2 ophthalmoscope, specula dispenser, oral thermometer, and manual aneroid



MDS36533023

- Wall mounted
- Nonslip, ergonomically-designed handles offer continuously adjustable brightness
- Includes Xenon EliteVue otoscope, Xenon L2 ophthalmoscope, and specula dispenser

I.V. Poles



MDS80500

- Economical 5-leg pole
- Hammertone base
- Twist lock height adjustment



MDS80600

- Heavy-duty, 6-leg pole
- Quick-release casters
- Stainless steel height adjustable pole



MDSP10906

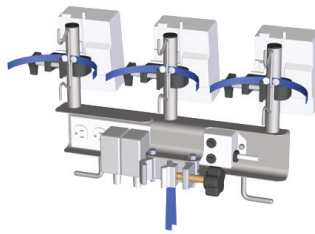
- Interlocking base
- Clearview hook
- Stainless steel

Operating Room

I.V. Pole Accessories



- PEDP1080F**
- Holds up to 6 pumps
- Includes universal clamp



- PEDP1080G**
- Holds up to 3 pumps
- Includes universal clamp



- PEDP3401**
- Hospital grade
- 15-ft. cord
- Stainless steel construction

Barrier Drape Clips



- MDSIVCLIP**
- Attach to surgical drape and I.V. pole as barrier
- Heavy-duty holding power; wide, easy-to-grip surface
- 50 each per case



- MDSIVCLIPZ**
- Attach to surgical drape and I.V. pole as barrier
- Heavy-duty holding power; wide, easy-to-grip surface
- 10 each per case

Hampers



- MDS80529**
- Foot pedal open
- Chrome finish, metal lid
- 20 W x 18 D x 38" H



- MDS80529P**
- Foot pedal open
- Chrome finish, plastic lid
- 20 W x 18 D x 38" H



- RBW694***
- Double medium-duty hamper
- Chrome finish, plastic lid
- 39½ L x 17¾ W x 35" H

*Available in other colors

Operating Room

Waste Receptacles



Medline offers
FREE O.R.
assessments

- EVSTCTHIN23BL**
- 23-gal.
 - Blue
 - Rectangle

Kick Buckets



- MPH08190**
- 13-qt. kick bucket
 - Wall guard
 - 14½" diameter



- MPH08MCM540**
- 12-qt. kick bucket
 - Wall guard
 - 13½" diameter



- PEDP1020SS**
- 12-qt. kick bucket
 - Wall guard
 - 13½" diameter

Mayo Stands



- MPH08771**
- Stainless steel
 - 20 W x 25" L tray
 - Foot-pedal operated, height adjustable



- MPH08MS02**
- Stainless steel
 - 16 W x 21" L tray
 - Foot-pedal operated lock adjusts height from 36–62"



- PEDP1066SS**
- Stainless steel
 - 16¼ W x 21¼" L tray
 - Foot-pedal operated lock height adjustable 36–62"

Operating Room

Solution Stands



- MPH0808SSHB**
- 8½-qt. each basin
 - Stainless steel
 - 29 W x 15¼ D x 34" H



- MPH08MCM1000**
- 8½-qt. single basin with X brace
 - Stainless steel
 - 14 W x 14 D x 34" H



- PEDP1078SS**
- 7-qt. single basin
 - Stainless steel
 - 14 W x 14 D x 34" H

Step Stools



- MDR717150**
- Includes handrail
 - 350-lb. weight capacity
 - 14¼ W x 11¼ D x 9" H

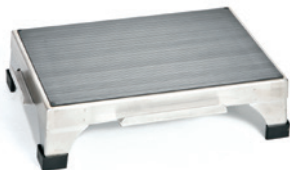


- BLK7764MRHR**
- Double step stool and dual handrails
 - 350-lb. weight capacity
 - 12 W x 36 D x 41" H

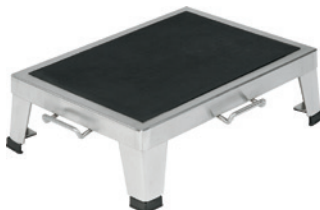


- PEDP1010SS**
- Rubber floor tips
 - 300-lb. weight capacity
 - 16 W x 12 D x 8¼" H

Stacking Step Stools



- MPH08MCM140**
- Stainless steel
 - Slip-resistant top and rubber floor tips
 - 14 D x 19 W x 6" H



- PEDP1015**
- Slip-resistant top
 - Heavy-gauge legs and handles
 - 14 D x 19 W x 6" H



- PEDP1015TC**
- Transport cart holds up to 6 PEDP1015 Step Stools (sold separately)
 - 3" diameter Genesis maintenance-free swivel caster
 - 28 D x 14¾ W x 40½" H

Operating Room

Procedure Lighting



- MDR50SC**
- Cool operation for long use
- Halogen bulb
- Ceiling mount included



- MDR65CMSCST**
- Precisely positioned LEDs allow superior shadow control, depth of field and light intensity
- Easy-to-use control pad includes 5 dimming levels and an endo mode
- 36 LED bulbs



- MDRALED100SC**
- Ceiling mounted
- 3-step dimmable LED system
- Limitless arm rotation

Scope Cabinets



- MDRSE1927SGRB**
- 5-scope capacity
- Glass door
- 19¼ L x 26¾ W x 60" H



- HLFSC8136DRDP***
- 16-scope drying cabinet
- Includes Sure-Dry positive pressure HEPA filter system
- 33 D x 44 W x 97" H



- MDRSEC1940SGD**
- 18-scope capacity
- Glass door
- 19¼ L x 40 W x 92" H

*Available in other colors and configurations

Storage Cabinets



- MPH08B70***
- 5 glass shelves
- Glass doors
- 35½ L x 16 W x 79¼" H



- MPH08B701***
- 5 stainless steel shelves
- Glass doors
- 35½ L x 16 W x 79¼" H



- MPH08B711***
- 5 glass shelves, adjustable every 5"
- Glass doors
- 48 W x 16 D x 78" H

*Available in other configurations

Operating Room

Stretchers



- MDS750SPEC***
 - Includes mattress, I.V. pole, side rails, and O₂ holder
 - 750-lb. weight capacity
 - 83 L x 29½" W



- MPHPT1001**
 - Includes 4" comfort mattress, oxygen tank holder; 2-hook removable telescoping I.V. pole and 6 I.V. pole sockets
 - 750-lb. weight capacity
 - 83¾ L x 33¾" W



- MONHRP800026R**
 - Reconditioned Hill Rom P8000 Transtar with 6-wheel steering
 - Accessories include center column support, retractable push handles and a quick-release O₂ holder
 - 700-lb. weight capacity

*Available in wide version

White Boards



- OFMESS8500***
 - 36 W x 24" H
 - Magnetic
 - Marker tray



- OFMESS8501***
 - 47 W x 30" H
 - Magnetic
 - Marker tray

*Available in other configurations

Utility Tables



- PEDSG80ASS***
 - Stainless steel with 2 drawers
 - 700-lb. weight capacity
 - 20 W x 16 D x 34" H



- PEDSG80SS***
 - Stainless steel with 1 drawer
 - 700-lb. weight capacity
 - 20 W x 16 D x 34" H



- PEDSG81SS***
 - Stainless steel, no drawers
 - 700-lb. weight capacity
 - 20 W x 16 D x 34" H

*Available in other sizes

Operating Room

Stainless Steel Back Tables



- MPH08MCM573HL***
- H-brace
 - No shelf, no casters
 - 36 W x 20 D x 35" H



- MPH08MCM582SC***
- With Shelf
 - 24 D x 60 L x 35" H



- PEDSG99SS***
- H-brace
 - Soundproofed reinforced channels for quiet use
 - 36 W x 24 D x 34" H

*Available in other sizes

Instrument Tables



- MPH08MCM508***
- Includes lower shelf
 - 3" casters
 - 24 L x 60 W x 34" H



- MPH08MCM517***
- Includes H-brace
 - 3" casters
 - 24 L x 60 W x 34" H



- PEDSG98SS***
- Includes lower shelf
 - 3" casters
 - 36 L x 24 W x 34" H

*Available in other sizes

Space Station Tables



- PEDCDS3060**
- Includes a tuck away shelf
 - Stainless steel
 - 30 D x 60 W x 34" H,
20 D x 60" W top shelf



- PEDCDS3072**
- Tuck away shelf
 - Stainless steel
 - 30 D x 72 W x 34" H,
20 D x 72" W top shelf



- PEDCDS3072ADJ**
- Tuck away shelf
 - Electronic height adjustability
 - 30 D x 72 W x 34" H,
20 D x 72" W top shelf

Operating Room

Armboards



- MPH08MCM401**
- Radiolucent
- Height adjustable with knob
- 6 W x 26" L



- MPH08MCM310**
- Single post
- Posi-lock clamps to adhere to the O.R. table
- 18 W x 32" L



- MPH08MCM321**
- Hourglass arm and double foot base
- Posi-lock clamps to adhere to the O.R. table
- 15 W x 32" L

Transfer Boards



- PVCM600W**
- Constructed of PVC
- 550-lb. weight capacity
- 70 L x 35½ W x 1¼" H



- MPH08MCM122**
- 10 built-in hand holes
- Full length, half length available
- 72 L x 22 W x ¾" H



- CNSPTS1000KL**
- Built-in scale to get weight while transferring
- 550-lb. weight capacity
- 71 L x 27½ W x 1" H

Medline Transfer Sheets available

Roller Boards



- MPH08MCM123**
- Cover included
- Eliminates physical lifting of patients
- 25" L



- MPH08MCM125**
- Cover included
- Eliminates physical lifting of patients
- 30" L



- MPH08MCM130**
- Cover included
- Eliminates physical lifting of patients
- 67" L

Accurately count and locate sponges before, during and after surgery.

ORLocate® Sponge Solution

RFID-enabled intraoperative item management system powered by Haldor Advanced Technologies

ORLocate Sponge Solution counts and locates sponges to help prevent RSIs. The modular architecture accommodates any need—from standalone sponge tracking to full intraoperative item management. Sponges and towels contain an RFID chip that can be detected by the HoveRead scanner and the Locator.

Key benefits

- Improve patient safety
- Reduce RSI risk and liability
- Reduce time spent on manual counting and searching for sponges
- Increase counting accuracy
- Minimize the need for X-ray to detect RSIs
- Ability to expand to instrument tracking
- EMR compatible

- RFID Locator**
- Lightweight
 - Ergonomic grip

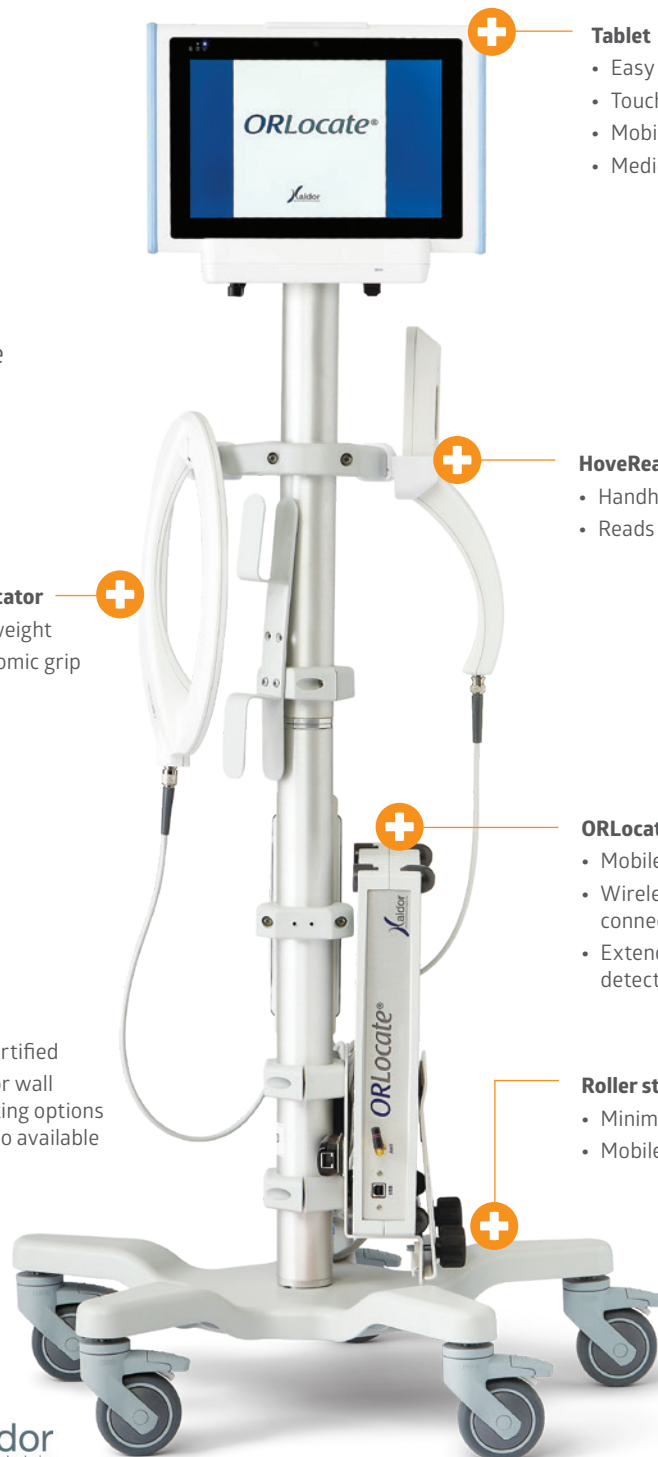
- ISO-certified
- Desk or wall mounting options are also available

- Tablet**
- Easy to use
 - Touchscreen
 - Mobile
 - Medical grade

- HoveRead RFID reader**
- Handheld
 - Reads multiple items

- ORLocate Reader**
- Mobile
 - Wireless network connection
 - Extended detection range

- Roller stand**
- Minimal footprint
 - Mobile



Patient Records

Fireproof File Cabinets



- FRK42131CAW**
- Includes high sides for hanging folders
- UL Class 350 1-hour fire rating
- 20 $\frac{1}{2}$ " W x 52 $\frac{3}{4}$ " H x 31 $\frac{1}{2}$ " D



- FRK44422CAW**
- Includes high sides for hanging folders
- UL Class 350 1-hour fire rating
- 44 $\frac{1}{2}$ " W x 52 $\frac{3}{4}$ " H x 22 $\frac{1}{2}$ " D



- FRKCF7236MDAW**
- Includes end tab filing
- UL Class 350 1-hour fire rating
- 36 W x 72 H x 19 $\frac{1}{4}$ " D

Track Shelving



- HIGH DENSITY SLIDING TRACK SYSTEM**
- Bearings in the skate are located under each post for a load capacity of 1,500-lbs. per shelving unit
- V-groove floor track allows the shelving unit to slide back and forth with ease
- Complies with ADA regulations



- HIGH DENSITY SLIDING OVERHEAD TRACK**
- Casters are 5 x 1 $\frac{1}{4}$ " rigid polyurethane
- Provides a clear walkway and clear aisles underneath eliminating any tripping hazard
- Manufactured of heavy-duty aluminum ensuring years of heavy-duty and reliable service

Completely Customizable

Provide your dimensions and let us optimize your space

Pharmacy

Bins



MDRQSB103*

- Economy bin
- Built-in rear hanger for tilting out on shelving
- 4¼ W x 17⅞ H x 17⅞" D



MDRQUS250C*

- Stack and hang bin
- Front, back and side grips for easy handling
- 14¾ W x 16½ D x 7" H



MDRQS975*

- Hulk bin
- Wide stacking ledge
- 18¼ L x 29⅞ W x 4" H

*Available in other sizes and colors

File Cabinets



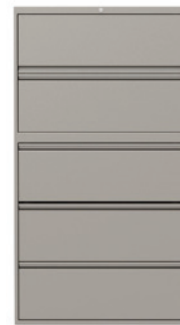
MDRLF6A36200*

- 2 drawers
- Lateral
- 36 W x 19¼ D x 28⅞" H



MDRLF6A42400*

- 4 drawers
- Lateral
- 42 W x 19 D x 53" H



GL01930P5F12*

- 5 drawers
- Lateral
- 19¼ D x 12¼" H drawers

*Available in other colors and sizes

Fireproof File Cabinets



FRK42131CAW

- Includes high sides for hanging folders
- UL Class 350 1-hour fire rating
- 20⅞ W x 52¾ H x 31⅞" D



FRK44422CAW

- Includes high sides for hanging folders
- UL Class 350 1-hour fire rating
- 44½ W x 52¾ H x 22⅞" D



FRKCF7236MDAW

- Includes end tab filing
- UL Class 350 1-hour fire rating
- 36 W x 72 H x 19¼" D

Pharmacy

Medication Carts



- HLFWL480PCDC***
- Concealed wheels behind wood facade
- All aluminum internal structure
- 22½ D x 35½ W x 45" H



- MPH12007CR***
- Spring-loaded locking narcotics box
- 600-750 punch card capacity
- 21½ W x 25½ D x 43½" H



- PHXLTC900PC***
- Removable plastic top and ergonomic handle
- 900 pill card capacity
- 47¼ W x 25 D x 43¼" H

*Available in additional colors and configurations

Narcotics Cabinets



- UME7780**
- 2 door
- 2 lock
- 18½ W x 24 H x 12½" D



- UME7784**
- 1 door, 1 lock
- Cam-Style lock
- 12 W x 7¾ H x 7" D



- MPH01WNCS2***
- Double door/double lock (both locks are keyed differently)
- 3 adjustable or removable shelves
- 12 W x 8 D x 15" H

*Available in other configurations and colors

Pharmacy/Vaccine Refrigerators



- HSBPH0404GADA**
- 4.6-cu. ft. capacity built-in under counter refrigerator
- Glass swing door
- 23¾ W x 25½ D x 31½" H



- HSBPHHCRFC12G**
- 12-cu. ft. capacity (10½ ref./17/10 freezer)
- Combo glass/solid door
- 23¾ W x 26½ D x 80¼" H

Pharmacy

Physician Stools



- MDR2135SBG***
- Pneumatic height adjustable 19–24"
 - Vinyl upholstery with composite base
 - 250-lb. weight capacity



- MDR505B***
- Pneumatic height adjustable 19–24"
 - Vinyl upholstery with aluminum base
 - 250-lb. weight capacity



- MDR505***
- Pneumatic height adjustable 17¾–24½"
 - No back; vinyl upholstery with aluminum base
 - 250-lb. weight capacity

*Available in other colors

Shelving



- MDRQW542460C5**
- Chrome
 - 24 W x 60 L x 54" H
 - 5 shelves, 4 posts



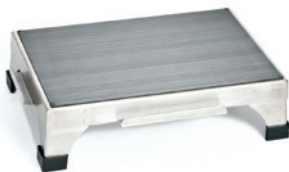
- MDRQWR742448C***
- Chrome
 - 24 W x 48 L x 74" H
 - 4 shelves, 4 posts



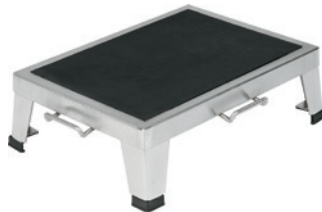
- MDRQWR742448S***
- Stainless steel
 - 24 W x 48 L x 74" H
 - 4 shelves, 4 posts

*Available in other sizes

Stacking Step Stools



- MPH08MCM140**
- Stainless steel
 - Slip-resistant top and rubber floor tips
 - 14 D x 19 W x 6" H



- PEDP1015**
- Slip-resistant top
 - Heavy gauge legs and handles
 - 14 D x 19 W x 6" H



- PEDP1015TC**
- Transport cart holds up to 6 PEDP1015 small case step stool (sold separately)
 - 3" diameter Genesis maintenance-free swivel caster
 - 28 D x 14¾ W x 40½" H

Pre Op/Post Op

Treatment Carts



- LGQQT35W21E3W***
 - 4 drawers, 2-3", 1-6" and 1-9"; E Lock (electronic lock is not included)
 - 20 W x 27 D x 34½" H



- MPH01WMLA9***
 - 6 drawers: 4-3", 1-6", 1-9"
 - Aluminum construction
 - 29 W x 24½ D x 42" H



- WTLALJR6CHY***
 - 5 drawers, 3-3", 2-6"
 - Includes dual side slide out work surfaces
 - 22 W x 19½ D x 33" H

*Available in other colors and configurations

Digital Scales



- CNS1101KL**
 - 1,000-lb. weight capacity
 - Optional height rod, includes BMI feature
 - Live handrails allow patient to hold onto handrails for stability while scale calculates



- MDR110611**
 - 550-lb. weight capacity
 - Includes height rod and BMI function
 - Locks in LB or KG only



- MPH07HP4**
 - 500-lb. weight capacity
 - Includes height rod and BMI function
 - EMR connectivity via USB=

Vital Signs Monitors and Patient Monitors



- MDSM3ASNTCP**
 - Suitable for adult, pediatric, and neonatal patients
 - Auto/manual/continuous BP modes
 - Measures NIBP, Pulse, SpO₂, and Oral Temp with printer for recording of vitals



- MDSRVSBST1**
 - Vital signs monitor with blood pressure, SpO₂, and oral thermometer; 3 measurement modes available with averaging available (continuous, spot-check, triage)
 - Full connectivity and compatibility with major EMR systems
 - Available as desk and floor model



- MDSIM50PT**
 - Provides essential measurements of patient vitals for continuous monitoring
 - Includes: 3/5 lead ECG, SpO₂, NIBP, skin temp, printer
 - 8½" high-resolution touchscreen display

Pre Op/Post Op

Integrated Diagnostics Systems



MDS36533020B

- Wall mounted
- Nonslip, ergonomically-designed handles offer continuously adjustable brightness
- Includes LED EliteVue otoscope, Xenon L2 ophthalmoscope, specula dispenser, oral thermometer, and manual aneroid



MDS36533023

- Wall mounted
- Nonslip, ergonomically designed handles offer continuously adjustable brightness
- Includes Xenon EliteVue otoscope, Xenon L2 ophthalmoscope and specula dispenser

Hampers



MDS80529

- Foot pedal open
- Chrome finish, metal lid
- 20 W x 18 D x 38" H



MDS80529P

- Foot pedal open
- Chrome finish, plastic lid
- 20 W x 18 D x 38" H



RBW694*

- Double medium-duty hamper
- Chrome finish, plastic lid
- 39½ L x 17¾ W x 35" H

*Available in other colors

Wheelchairs



MDS806250D

- 300-lb. weight capacity
- 18" W
- Includes removable desk length arms and swing-away leg rest



MDS806300EV

- 300-lb. weight capacity
- 18" W
- Includes removable desk length arms and elevating leg rest



MDS806950

- 500-lb. weight capacity
- 33½" W
- Includes removable desk length arms and elevating leg rest

Pre Op/Post Op

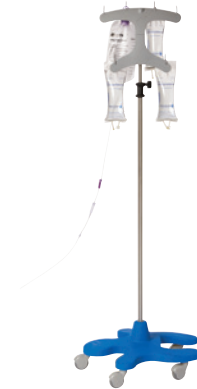
I.V. Poles



- MDS80500**
 - Economical 5-leg pole
 - Hammertone base
 - Twist lock height adjustment



- MDS80600**
 - Heavy-duty, 6-leg pole
 - Quick-release casters
 - Stainless steel height adjustable pole

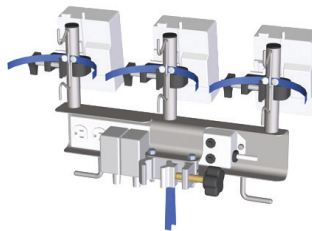


- MDSP10906**
 - Interlocking base
 - Clearview hook
 - Stainless steel

I.V. Pole Accessories



- PEDP1080F**
 - Holds up to 6 pumps
 - Includes universal clamp



- PEDP1080G**
 - Holds up to 3 pumps
 - Includes universal clamp



- PEDP3401**
 - Hospital grade
 - 15-ft. cord
 - Stainless steel construction

Overbed Tables



- MDRAMOBTWBL**
 - Whiteboard laminate top, seamless and easy-to-clean
 - 100-lb. weight capacity
 - 32 L x 17" H top



- MDROTFTMCSGU**
 - Medium cherry thermofoil flip top with accessories
 - 100-lb. weight capacity; table top: 17 W X 32" L, flip top: 13½ L X 17" W
 - Quick ship



- MDRAMIOBT1P***
 - Peanut thermofoil top with spill guard edge
 - 100-lb. weight capacity
 - 32 x 17" top

*Available in other colors

Pre Op/Post Op

Recliners



- FURN10100BLC***
- 3-position headrest
 - 300-lb. weight capacity
 - 69 L x 19" W



- CMP67PT09**
- Wall hugger infinite position recline mechanism
 - Includes a foldaway side table, self-storing foot tray, and push handle
 - 32¾ W x 40½ D x 49½" H; 300-lb. weight capacity



- CMP858T09***
- Includes swing-away arms, fold away table, retractable foot tray, and push handle
 - 300-lb. weight capacity

*Available in other configurations and colors

Physician Stools



- MDR2135SBG***
- Pneumatic height adjustable 19–24"
 - Vinyl upholstery with composite base
 - 250-lb. weight capacity



- MDR505B***
- Pneumatic height adjustable 19–24"
 - Vinyl upholstery with aluminum base
 - 250-lb. weight capacity



- MDR505***
- Pneumatic height adjustable 17¾–24½"
 - No back, vinyl upholstery with aluminum base.
 - 250-lb. weight capacity

*Available in other colors

Phlebotomy Chairs



- MDR66000B***
- Flip arm able to adjust height and depth. Padded seat and arm rests.
 - 700-lb. weight capacity
 - 35 W x 21" D



- MDR66010***
- Contoured padded seat, backrest and armrests
 - 400-lb. weight capacity
 - 31 W x 27" D



- MDR6810***
- Fully electric recline and height adjustment (22–30" seat height)
 - 375-lb. weight capacity
 - 20½ W x 17" D

*Available in other colors

Pre Op/Post Op

Phlebotomy Carts



- MDR67200**
- Cabinet has laminate construction
- Pneumatic height adjustment
- Lockable door



- MDRMED0020HL**
- Includes small blue bin
- Ergonomic vertical/horizontal handle
- Large casters are quiet and can go over any surface



- MDRMED1216HS**
- Includes large blue bin with dividers
- Ergonomic vertical/horizontal handle
- Large casters are quiet and can go over any surface

Privacy Screens



- MDS80450***
- 3 panels
- Aluminum frame
- Includes casters



- RBWPSS3C***
- 3 panels
- Powder-coated steel frame
- Includes casters



- WNF317002***
- Powder-coated steel frame
- Standard crutch tips and casters included
- Smooth panels for easy cleaning

*Available in other colors and lengths

Stretchers



- MDS750SPEC***
- Includes mattress, I.V. pole, side rails, and O₂ holder
- 750-lb. weight capacity
- 83 L x 29½" W



- MPHPT1001**
- Includes 4" comfort mattress, oxygen tank holder; 2-hook removable telescoping I.V. pole and 6 I.V. pole sockets
- 750-lb. weight capacity
- 83¾ L x 33¾" W



- MONHRP800026R**
- Reconditioned Hill Rom P8000 Transtar with 6-wheel steering
- Accessories include center column support, retractable push handles and a quick-release O₂ holder
- 700-lb. weight capacity

*Available in wide version

Pre Op/Post Op

Workstation on Wheels



ALTCLP0141*

- Laptop cart
- Rectangle shape
- Height adjustment: 28½–46½"



ALTHC6P50141B*

- Computer cart
- Rectangle shape
- Height adjustment: 28½–46½"



ALTPC47P60141*

- Computer cart
- Kidney shape
- Height adjustment: 28½–46½"

*Available in other configurations

Blanket Warmers



ESYEC1540

- 98–200°F temperature range
- 15.4-cu. ft. dual chamber, 40–45 blanket capacity
- 23%₁₀ W x 33 D x 72%₁₀ H



ESYEC1850BL

- Temperature range, fluid chamber: 90–150°F, bottom chamber: 90–160°F
- 18.5-cu. ft. dual chamber, 30–40 blanket capacity, 30 1-L bottles or 36 1-L bags
- 30 W x 28½ D x 75" H



ESYEC750

- 90–160°F temperature range
- 7.5-cu. ft., 20–25 blanket capacity
- 24 W x 25%₄ D x 35%₂ H

Scrub Area

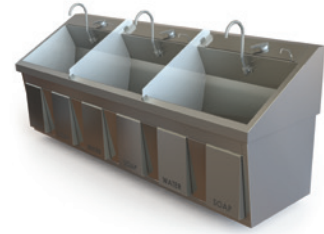
Scrub Sinks



- MPH08SS32***
- Stainless steel
- Knee operated single sink
- Includes high mount swivel gooseneck spout with adjustable spray



- MPH08SS64IR***
- Stainless steel
- Double sink
- Includes Infrared high mount swivel gooseneck spout with adjustable spray aerator



- MPHSS96IRMBTM***
- Stainless steel
- Triple sink
- Includes Infrared high mount swivel gooseneck spout with adjustable spray aerator

*Available in other configurations

Blanket Warmers



- ESYEC1540**
- 98–200°F temperature range
- 15.4-cu. ft. dual chamber, 40–45 blanket capacity
- 23¹/₁₀ W x 33 D x 72¹/₁₀ H



- ESYEC1850BL**
- Temperature range, fluid chamber: 90–150°F, bottom chamber: 90–160°F
- 18.5-cu. ft. dual chamber, 30–40 blanket capacity, 30 1-L bottles or 36 1-L bags
- 30 W x 28¹/₂ D x 75" H



- ESYEC750**
- 90–160°F temperature range
- 7.5-cu. ft., 20–25 blanket capacity
- 24 W x 25³/₄ D x 35¹/₂ H

Hampers



- MDS80529**
- Foot pedal open
- Chrome finish, metal lid
- 20 W x 18 D x 38" H



- MDS80529P**
- Foot pedal open
- Chrome finish, plastic lid
- 20 W x 18 D x 38" H



- RBW694***
- Double medium-duty hamper
- Chrome finish, plastic lid
- 39¹/₂ L x 17³/₄ W x 35" H

*Available in other colors

Storage Room

Poly Utility Carts



LKS2500

- 300-lb. weight capacity
- 3 shelves
- Spill guard edge



LKS2512

- 500-lb. weight capacity
- 3 shelves
- Spill guard edge



MDRQPC4026333

- 500-lb. weight capacity
- 3 shelves
- 6" spill guard edge

Bins



MDRQSB103*

- Economy bin
- Built-in rear hanger for tilting out on shelving
- 4¼ W x 17⅞ H x 17⅞" D



MDRQUS250C*

- Stack and hang bin
- Front, back and side grips for easy handling
- 14¾ W x 16½ D x 7" H



MDRQUS975*

- Hulk bin
- Wide stacking ledge
- 18¼ L x 29⅞ W x 4" H

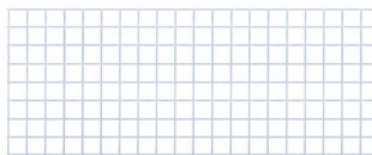
*Available in other sizes and colors

Grid Storage Panels



MDRQGSP2460*

- Wall mounted
- Fits grid hooks or slanted grid store baskets
- 24 W x 60" L



MDRQGSP2472*

- Wall mounted
- Fits grid hooks or slanted grid store baskets
- 24 W x 72" L

*Available in other sizes

Storage Room

High-Density Shelving



- MDRQ2460CG475***
- 4 wire, 1 solid shelf
- 4 donut bumpers, 4 stem casters
- 24 W x 60 L x 80" H

*Available in different sizes

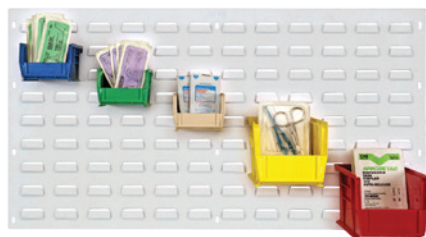


- MDRQ2460C47***
- 4 wire shelves
- Includes 4 donut bumpers and 4 5" poly stem casters, 2 have brakes
- 24 W x 60 L x 80" H



- MDRQ2460SG47***
- 4 solid shelves
- Includes 4 donut bumpers and 4 5" poly stem casters, 2 have brakes
- 24 W x 60 L x 80" H

Louwer Panels



- MDRQLP3619WH**
- Wall mounted
- 36 L x 19" H
- Cold-rolled steel



- MDRQLP3661**
- Wall mounted
- 36 L x 61" H
- Cold-rolled steel



- MDRQLP4861**
- Wall mounted
- 48 L x 61" H
- Cold-rolled steel

Shelving



- MDRQW542460C5***
- Chrome
- 24 L x 60 W x 54" H
- 5 shelves, 4 posts



- MDRQWR742448C***
- Chrome
- 24 W x 48 L x 74" H
- 4 shelves, 4 posts



- MDRQWR742448S***
- Stainless steel
- 24 W x 48 L x 74" H
- 4 shelves, 4 posts

*Available in other sizes

Storage Room

DSI Shelving

MODU-MAX

- Rails can be adjusted every 1" on center (no tools required) allowing baskets to be adjusted in seconds flat. The rails have the unique "snap-in" catch that locks the rail onto the frame.
- Frame uprights contain a front runner strip. This 1-piece rubber strip helps prevent denting, chipping or scraping of misguided carts and product.
- Aluminum stabilizer cross members are made from 18 gauge aluminum to ensure stability and added strength, yet keeping the frame very light.
- All casters are 3" swivel polyurethane braking double wheel for heavier load capacities.
- Rails have a "built-in" stopper to prevent the basket extending through the rear of the frame.



MODU-MAX CTS

- Heavy-duty ball bearing glides extend 110% allowing access to the entire tray when completely pulled out. Runners will automatically pull themselves back in the last 1/2". Load capacity is 45-lbs. per shelf.
- Trays have full length pull handles allowing for easy access to product. Trays have powder coated solid galvanized surface.
- 1" rear and side retaining walls on the trays ensure product will remain in place while trays are opened and closed.
- All casters are 3" swivel polyurethane braking double wheel for heavier load capacities.



WIRE SHELVING SYSTEMS

- Fine mesh wire baskets and powder coated epoxy paint for erosion prevention.
- Holes in the frame uprights are spaced every 1/2" on center allowing for maximum basket adjustment.
- Comes with metal, screw in foot levelers or 4" swivel polyurethane braking casters.



Therapy & Rehab Room

Upright Exercise Bikes



- MTXU1X**
- Step-through entry for easy access
- 400-lb. weight capacity
- 46 L x 26 $\frac{1}{2}$ W x 57 $\frac{1}{2}$ H



- SCFIS07001**
- Bi-directional resistance
- 350-lb. weight capacity
- 58 L x 23 W x 53" H



- SPR800343**
- Vertical and horizontal adjustable seat
- 450-lb. weight capacity
- 42 L x 21 W x 53" H

Recumbent Exercise Bikes



- SAC521M**
- Reclining seat and pivoting arm rests
- 400-lb. weight capacity
- 66 $\frac{1}{2}$ L x 26 $\frac{3}{4}$ W x 50" H



- SCFIS07011R**
- Removable seat for wheelchair access
- 450-lb. weight capacity
- 58 L x 24 W x 53" H



- SPR800143**
- Easily adjustable seat
- 450-lb. weight capacity
- 57 L x 30 W x 51" H

Recumbent & Lateral Steppers



- SPRCRS800**
- Foam seat pads and cushioned handles
- 450-lb. weight capacity
- 67 L x 31 $\frac{1}{2}$ W x 48" H



- SCFSONE03**
- Direct wheelchair access and step-through seating
- 450-lb. weight capacity
- 68 L x 30 W x 48" H



- SCFLAT03**
- Circular motion activates stability muscles
- 450-lb. weight capacity
- 70 L x 34 W x 49 $\frac{1}{2}$ H

Therapy & Rehab Room

Ellipticals



- MTXE1X**
- Suspension design for smooth motion
 - 400-lb. weight capacity
 - 70 L x 29½ W x 68½" H



- SCFSXT7000**
- Bi-directional resistance
 - 425-lb. weight capacity
 - 60 L x 32 W x 63" H



- SPR800043**
- 2 cooling fans for 4 hp motor
 - 450-lb. weight capacity
 - 78 L x 28 W x 67" H

Treadmills



- MTXT3XM**
- Extended handrails with angled grips
 - 350-lb. weight capacity
 - 66½ L x 26¾ W x 50" H



- SCFAC5000**
- Side handrail switches for speed and elevation
 - 550-lb. weight capacity
 - 83 L x 34 W x 63" H



- SPR800844 & SPR801849**
- 22 x 60" workout area for walkers or runners
 - 450-lb. weight capacity
 - 84 L x 35 W x 57" H

Ergometers



- HCIPTPRO & HCIUBETABLEM**
- 32 resistance levels and adjustable crank and handles
 - For standing use
 - 22½ L x 18 W x 21" H



- SAUB521M-BILA**
- In-unison or opposing arm motion
 - 500-lb. weight capacity
 - 69 L x 31½ W x 75" H



- SCFPRO100**
- Removable seat for wheelchair access
 - 450-lb. weight capacity
 - 60 L x 30 W x 77" H

Therapy & Rehab Room

Full Body Exercisers



- SCFPRO230**
- Removable seat for wheelchair access
 - 450-lb. weight capacity
 - 61 L x 30 W x 62" H



- MDSPKDUO**
- Active and passive training
 - 285-lb. weight capacity
 - 33½ L x 48 W x 26½" H



- SCFCORESTIX**
- Provides assistance and resistance in functional exercises
 - Instructional placecards included on the platform
 - 60½ L x 33 W x 5½" H

Functional Exercise



- MTXG3-MSFT300**
- 1:4 pulley ratio
 - Comes with 10 attachments
 - 66¾ L x 51½ W x 92¾" H

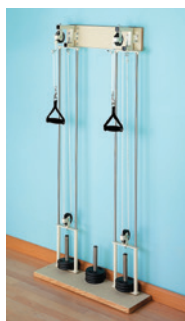


- SADS972**
- 1:2 and 1:4 adjustable pulley ratios
 - Comes with 7 piece accessory set
 - 60½ L x 39¾ W x 89½" H

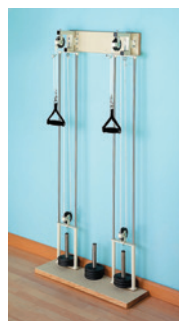


- TFSCDP-300**
- 1:2 and 1:4 adjustable pulley ratios
 - 16-position dual cable station
 - 50 L x 50 W x 83" H

Wall-Mounted Exercise



- HSM2626**
- 2-disc pulley weights
 - "Smooth action" nylon pulleys
 - 8½ L x 30 W x 63" H



- HSM2629**
- 4-disc pulley weights
 - "Smooth action" nylon pulleys
 - 8½ L x 30 W x 63" H



- HSM2631**
- 6-disc pulley weights
 - "Smooth action" nylon pulleys
 - 8½ L x 30 W x 96¾" H

Therapy & Rehab Room

Strength Equipment



MTXVS-S131

- Elevated foot rests for stability
- Reclined position for lumbar support
- 60%₁₀ L x 61%₁₀ W x 78%₁₀" H



SADF208

- Multiple seating positions
- Stainless steel guide rods
- 55%₁₀ L x 58 W x 65%₁₀" H



TFSCG-9503

- Roller-style seat assembly
- 200-lb. steel weight stack
- 73 L x 59 W x 59" H

Strength Accessories



MDSP100565

- Durable iron with vinyl coating to prevent scuffing
- Set of 20 dumbbells, 2 of each weight 1–10-lbs.
- Additional weights available



MDSP103146

- Easy grip surface
- 5-piece set, 1 each 2, 4, 7, 11, 15-lbs.
- Additional sizes available



MTXXT5-50-RBH

- Thick rubber coating and steel core
- Hard chrome handles
- 5–50-lb. set, additional sizes available

ActivICE™ Topical Pain Relief



MDSAICESPRYH

- Compare to Biofreeze*
- Temporary pain relief for arthritis, muscle aches, joint and back pain
- 4-oz. spray bottle



MDSAICEGELH

- Compare to Biofreeze*
- Temporary pain relief for arthritis, muscle aches, joint and back pain
- 4-oz. gel



MDSAICEROLLH

- Compare to Biofreeze*
- Temporary pain relief for arthritis, muscle aches, joint and back pain
- 3-oz. roll on

*Details on file

Therapy & Rehab Room

Neurogym®



- NGSTST**
- Counterweight mechanism assists standing and seating activity
- Helps improve transfers
- Easily wheeled from room to room



- NGBMT**
- Graduated body weight support system
- Allows those with compromised balance to engage in activities
- Easily wheeled from room to room



- NGEPSA**
- Trains lower extremity strength and range of motion
- Small footprint
- Lightweight and easily wheeled from room to room

Virtual Reality Exercise



- MDSVRJTRX**
- Combines virtual reality with therapy-focused games
- No necessary sensors on the body
- Shared templates, results data, and automatic documentation

Treatment Tables (Power)



- MDR80200***
- Pneumatic backrest
- 450-lb. weight capacity
- 72 L x 27" W



- MDR802100***
- 1-piece top for easy cleaning
- 450-lb. weight capacity
- 72 L x 27" W



- MDROAKPT300***
- Height range: 16-34"
- 550-lb. lifting capacity and includes manual tilt headrest and lift-assist backrest
- 73 L x 29" W

*Available in other color options

Therapy & Rehab Room

Wooden Treatment Tables



- ARMAM604**
- 500-lb. weight capacity
 - 78 L x 30 W x 30" H



- ARMAM618**
- 500-lb. weight capacity
 - 78 L x 28 W x 30" H



- HSM4002**
- 400-lb. weight capacity
 - 72 L x 24 W x 31" H

Hi/Lo Treatment Tables



- ARMAM150**
- 400-lb. weight capacity
 - 76 L x 27 W x 17-36" H



- ARMAM200**
- 400-lb. weight capacity
 - 76 L x 27 W x 18-37" H



- ARMAM340**
- 500-lb. weight capacity
 - 76 L x 40 W x 18-37" H

Mat Tables



- ARMAM657**
- 500-lb. weight capacity
 - 5' W x 7' L x 18" H



- ARMAM641**
- 900-lb. weight capacity
 - Electric height adjustment 20-30"
 - 4 W x 7' L



- ARMAM652**
- 900-lb. weight capacity
 - Manual height adjustment 20-30"
 - 5 W x 7' L

Therapy & Rehab Room

Tilt Tables



- HSM6020**
- 300-lb. weight capacity
 - Manual crank
 - 78 L x 28 W x 33" H



- HSM6040**
- 300-lb. weight capacity
 - Heavy-duty electric tilt mechanism
 - 78 L x 28 W x 33" H



- HSM6045**
- 500-lb. weight capacity
 - Bariatric electric tilt table
 - 74 L x 34 W x 33" H

Stand-In Tables



- HSM6125**
- 180-lb. weight capacity
 - Height of standing platform can be adjusted in 10" vertical range
 - 30 L x 30 D x 45" H



- HSM6180**
- 400-lb. weight capacity
 - Motorized height adjustment from 42½–52½"
 - 37 W x 42" D



- HSM6185**
- 500-lb. weight capacity
 - Motorized height adjustment from 42½–52½"
 - 43 W x 42" D

Parallel Bars



- ARMAM700**
- 400-lb. weight capacity
 - 10' L, electric height and manual width adjustment



- HSM1362**
- 300-lb. weight capacity
 - 10' L, electric height and width adjustment



- HSM1391**
- 400-lb. weight capacity
 - 7' L, manual height and width adjustment

Therapy & Rehab Room

Training Stairs



- ARMAM680**
- 450-lb. weight capacity
 - 55 L x 31 W x 48" H



- HSM1567**
- 350-lb. weight capacity
 - 5 L x 30 W x 24" H



- HSM1570**
- 350-lb. weight capacity
 - 109 L x 56 W x 24" H

Work Tables



- HSM4335**
- Round hydraulic table with foot activated mechanism raises height from 28½–34" high
 - 48" in diameter



- HSM4375**
- Electric lift mechanism elevates top from 27–43" high
 - 36 W x 60" L



- MDR7528C**
- Activity table with cut-out
 - 63 L x 40 W x 26–34" H range
 - Cut-out is 18 W x 10" D

Physician Stools



- MDR2135SBG***
- Pneumatic height adjustable 19–24"
 - Vinyl upholstery with composite base
 - 250-lb. weight capacity



- MDR505B***
- Pneumatic height adjustable 19–24"
 - Vinyl upholstery with aluminum base
 - 250-lb. weight capacity



- MDR505***
- Pneumatic height adjustable 17¾–24½"
 - No back; vinyl upholstery with aluminum base
 - 250-lb. weight capacity

*Available in other colors

Therapy & Rehab Room

E-Stim/Ultrasound



- MDSQ7001**
- 4-channel electrotherapy unit
- 8 preset protocols and space for 99 customizable protocols
- Bilingual touchscreen interface (English/Spanish)



- MDSQ8001**
- 4-channel electrotherapy and ultrasound unit
- 8 preset protocols and space for 99 customizable protocols
- Bilingual interface (English/Spanish)



- CHT6000 & CHT70001**
- E-Stim/Ultrasound/EMG/Laser therapy available contact division for options
- Up to 100 protocol options
- Item numbers only include base and cart, customer required to order additional modules

Diathermy

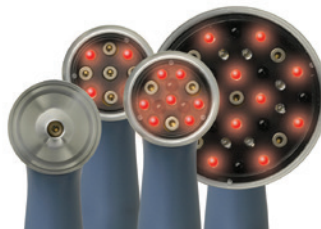


- MDSDIATHERMY**
- Large drum and versatile arm
- 6 heat dosage settings, including 2 additional moderate settings
- Faster heating and shorter treatment times

Light Therapy



- CHT2784**
- Non-contact pain relief therapy
- Versatile and mobile, designed for tabletop, cart, or wall mount
- Must purchase diode cluster separately



- CHT27811 & CHT27812**
- Non-contact pain relief therapy; stimulates wound healing and reduces inflammation
- CHT27811 – 9 diode cluster, 540 mW total power; CHT27812 – 9 diode cluster, 1040 mW total power
- Applicator options for CHT2784



- MDSDQLLT & MDSDQCART**
- Low level laser light therapy
- 10 predefined protocols and up to 100 user protocol options
- Mobile and can be used with a cart

*Additional accessories available

Therapy & Rehab Room

Dysphagia Therapy – VitalStim Plus



- CHT5923**
 - NMES/E-Stim therapy for dysphagia patients
 - Customizable treatment protocols
 - 4 channels



- E-I59000**
 - Replacement electrodes for VitalStim
 - 12/pk



- E-I59043**
 - Replacement electrodes for VitalStim
 - 50/bx

Hivamat



- MDSHIVAPORT**
 - Deep oscillation therapy using electrostatic field
 - Comes with 3 treatment protocol cards
 - Battery operated for mobile use



- MDSHIVAEBI**
 - Deep oscillation therapy using electrostatic field
 - Ability to store treatment programs created by therapist
 - Features full-color screen, navigation wheel, and intensity knob



- MDSHIVACART**
 - Used for evident model
 - Offers mobility and ample storage

Moist Heat Therapy



- CHT2102**
 - Durable stainless steel tabletop unit
 - Comes with 4 standard heat packs
 - 13 W x 8 D x 16" H



- CHT2502**
 - Durable stainless steel mobile unit
 - Comes with 24 standard heat packs
 - 35 W x 20 D x 33" H



- MDSHYDRA12DD**
 - Mobile composite polymer tank that requires little cleaning
 - Comes with 3 standard, cervical, universal, and oversize heat packs
 - 30 W x 20 D x 33" H

Therapy & Rehab Room

Cold Pack Machines



- CHT3102**
- Mobile top-opening unit with faster chilling time
 - Comes with 6 regular and 6 half-size cold packs
 - 27 W x 16 D x 33" H



- CHT90910**
- Front-opening unit with 4 stainless steel shelves
 - Comes with 12 regular cold packs
 - 21½ W x 26 D x 33½" H



- WHTLF4**
- 4 cold packs included
 - 17¼ W x 18½ D x 19" H

Game Ready



- DYGR55050003**
- Cooling and compression therapy to reduce edema and pain
 - Deep therapy for faster recovery
 - Available battery pack for enhanced mobility



- DYGR59016003**
- Articulated knee wrap
 - Universal (either leg), one size fits all
 - Cold compression therapy for fast rehab and recovery



- DYGR59043403**
- Cold compression therapy for fast rehab and recovery
 - Available for various shoulder conditions
 - For right shoulder, use item DYGR59043203, left shoulder DYGR59043403

Hawkgrips



- MDSHGGOLD**
- Comes with emollient and user manual
 - Pack of 7 instruments



- MDSHGINTRO**
- Comes with emollient and user manual
 - Pack of 3 instruments



- MDSHGSILVER**
- Comes with emollient and user manual
 - Pack of 6 instruments

Therapy & Rehab Room

Digital Scales



CNS1101KL

- 1,000-lb. weight capacity
- Optional height rod, includes BMI feature
- Live handrails allow patient to hold onto handrails for stability while scale calculates



MDR110611

- 550-lb. weight capacity
- Includes height rod and BMI function
- Digital



MPH07HP4

- 500-lb. weight capacity
- Includes height rod and BMI function
- Digital

Vital Signs Monitors and Patient Monitors



MDSM3ASNTCP

- Suitable for adult, pediatric, and neonatal patients
- Auto/manual/continuous BP modes
- Measures NIBP, Pulse, SpO₂, and Oral Temp with printer for recording of vitals



MDSRVSBST1

- Vital signs monitor with blood pressure, SpO₂, and oral thermometer; 3 measurement modes available with averaging available (continuous, spot-check, triage)
- Full connectivity and compatibility with major EMR systems
- Available as desk and floor model



MDSIM50PT

- Provides essential measurements of patient vitals for continuous monitoring
- Includes: 3/5 lead ECG, SpO₂, NIBP, skin temp, printer
- 8 $\frac{3}{4}$ " high-resolution touchscreen display

Hampers



MDS80529

- Foot pedal open
- Chrome finish, metal lid
- 20 W x 18 D x 38" H



MDS80529P

- Foot pedal open
- Chrome finish, plastic lid
- 20 W x 18 D x 38" H



RBW694*

- Double medium-duty hamper
- Chrome finish, plastic lid
- 39 $\frac{1}{2}$ " L x 17 $\frac{3}{4}$ " W x 35" H

*Available in other colors

Therapy & Rehab Room

Privacy Screens



- MDS80450***
- 3 panels
 - Aluminum frame
 - Includes casters



- RBWPSS3C***
- 3 panels
 - Powder coated steel frame
 - Includes casters



- WNF317002***
- Powder-coated steel frame
 - Standard crutch tips and casters included
 - Smooth panels for easy cleaning

*Available in other colors

Waiting Room

Reception Counters



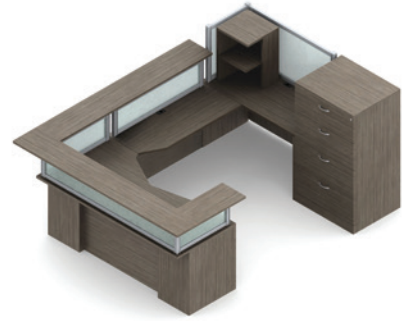
OFM55293WAL*

- Triple unit
- Silver base with walnut top
- 142 W x 45½ H x 71" D



OFM55312WAL*

- Double unit
- Silver base with walnut top
- 124¾ W x 45½ H x 49" D



GLOZRA521L*

- Multi-piece unit with plenty of storage and large work area
- Many different finish options
- 6 W x 9' D footprint, 30" counter height

*Available in other configurations, sizes, and colors

Guest Chairs



OFM403VAM606 *

- Steel tube sled base
- Easy to clean vinyl
- 250-lb. weight capacity



LESLS1801G7G3*

- Sturdy steel frame and durable powder coat finish
- Many vinyl and crypton fabric options
- 275-lb. weight capacity



GLOGC3620WV2

- Solid hardwood frame
- Many vinyl and crypton options
- 350-lb. weight capacity

*Available in other colors

Magazine Racks



MDR5621CL

- Clear display unit
- Wall mounted
- 11 H x 2 D x 12¼" L



MDR5579BL

- 10-pocket
- Wall mounted
- 9¾ H x 7½" W



MDR6616MG

- 6-pocket
- Wall mounted
- 30 H x 3 D x 24" L

Waiting Room

Wheelchairs



- MDS806250D**
- 300-lb. weight capacity
 - 18" W
 - Includes removable desk length arms and swing-away leg rest



- MDS806300EV**
- 300-lb. weight capacity
 - 18" W
 - Includes removable desk length arms and elevating leg rest



- MDS806950**
- 500-lb. weight capacity
 - 33½" W
 - Includes removable desk length arms and elevating leg rest

Waste Baskets



- BRW35266**
- 32-qt. square bin
 - White
 - 11½ W x 12½ D x 18¾" H



- MPHP24R**
- 32-qt. round bin
 - White
 - 11½ W x 24" H



- UMESS1475**
- 48-qt. square bin
 - Stainless steel
 - 14 W x 13 D x 23½" H

Vinyl Task Chairs



- OFM241VAMDK66**
- Adjustable foot ring and many back, seat, and arm adjustments settings
 - Comes with 2 different height bases for a seat height of 25¾–29½" or 28¾–32½"
 - 250-lb. weight capacity



- OFM241VAMA606***
- Many ergonomic seat, back, and arm adjustments
 - Standard height of 19–22½"
 - 250-lb. weight capacity



- OFM247VAM606***
- Multiple ergonomic options including synchronized back and seat adjustment
 - Standard height of 19½–23"
 - 400-lb. weight capacity

*Available in other colors

Capital purchases, simplified.

Capital Quote Tool

www.MedlineCapitalQuote.com

Dealing with multiple vendors can be inefficient and challenging. Our Capital Quote Tool can help. It's your single source for quality, service and the best price.

One more way we help simplify capital purchases.



Browse.

Quickly navigate and search by product category, specific product or room-by-room.

- Laboratory
- Nurses' Station
- Operating Room
- Pre-Op
- Post-Op
- Storage/Medication Closet
- Triage Room
- Emergency Room
- Radiology
- ...and more

Choose.

Evaluate, preview and compare prices with ease.

- Industry-leading selection with all the well-known national brands, including high-quality Medline products
- Unconditional product performance guarantee

Order.

Receive accurate costing within 24 hours after you submit your quote and take advantage of superior customer support services:

- Product planning
- Logistics coordination
- Order consolidation
- Flexible financing options



Medline Industries, Inc. Three Lakes Drive, Northfield, IL 60093
Medline United States
1-800-MEDLINE (633-5463)
medline.com | info@medline.com

Medline Canada
1-800-396-6996 | medline.ca | canada@medline.com
Medline México
01-800-831-0898 | medlinemexico.com | mexico@medline.com

Follow us    