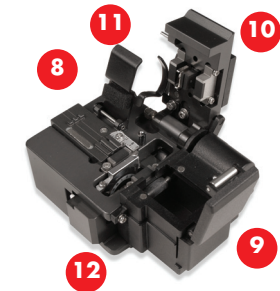
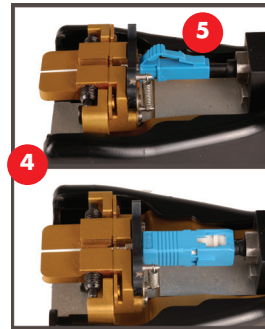
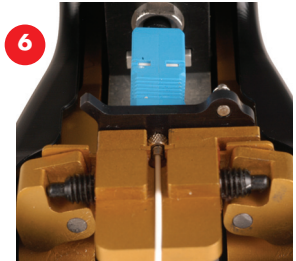
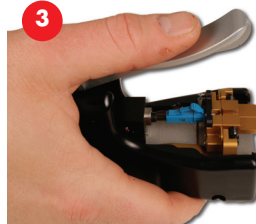


## FIBER TERMINATION KIT

Siemon's new XLR8 mechanical splice termination kit incorporates an exclusive dual-process activation tool which dramatically reduces termination time per connector. This process is intended for use with 900µm tight buffered fiber cables.



- 1 Single Step Termination**— XLR8 tool combines both splice activation and mechanical crimp into a single, optimized step
- 2 Robust Process** — Single-step termination eliminates the need to handle the connector between splice and crimp processes, maintaining integrity of the splice
- 3 Flexible Ergonomics** — Tool optimized for use in handheld or table-top orientation
- 4 Reduced Risk of Polish Contamination** — All termination steps completed with connector dust cap in place
- 5 Universal LC/SC Compatibility** — Tool terminates both LC and SC connectors with no time-consuming changeover required
- 6 Fiber Alignment Aid** — Smooth alignment channel simplifies fiber insertion and avoids damage to fiber end face

- 7 Validated** — XLR8 Tool has been validated for over 250,000 cycles
- 8 Precision Cleaver** — Kit features a user-friendly fiber cleaver designed to provide clean, precise and high performance cleaves on an array of fiber types
- 9 Safety** — Integrated cleaver fiber collection bin eliminates handling of cleaved fiber
- 10 Simple Cleaver Operation** —Single operation cleaving mechanism
- 11 Oil Dampening System** —Oil dampening system allows the blade to cleave at a uniform speed eliminating user variance resulting in a consistent high quality cleave
- 12 Cleaver Life Span** —Increased blade life span resulting in 48,000 cleaves

### ORDERING INFORMATION

Part #	Description
FTERM-XLR8 . . . . .	XLR8 fiber termination kit

#### Kit Includes:

- Activation tool
- Jacket stripper
- Buffer stripper
- Scissors
- Precision cleaver
- Strip template
- Marker
- Alcohol pads
- Electrical tape
- Convenient carrying case

#### Replacement Parts

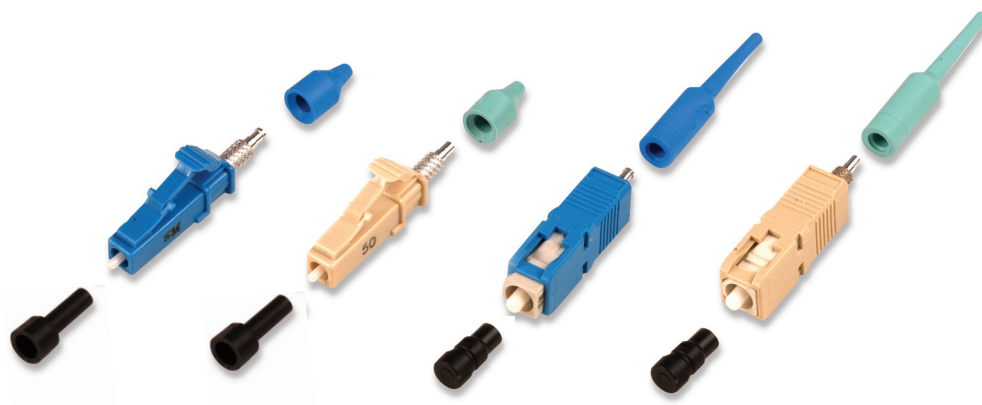
Part #	Description
FTERM-XLR8-A . . . . .	Fiber activation tool, replacement
FTERM-XLR8-C2 . . . . .	Precision fiber cleaver, replacement



Visit [www.siemon.com](http://www.siemon.com) for installation instructions and demonstration

## XLR8 FIBER CONNECTORS

Combined with the patent-pending XLR8 activation tool, Siemon's new pre-polished XLR8 mechanical splice connectors can be deployed with unsurpassed termination speed and quality. Available in both LC and SC configurations, these connectors support both the multimode and singlemode versions of Siemon's 10 Gb/s XGLO® and Gigabit-ready LightSystem® solutions.



### Optical Performance

#### Insertion Loss

- SM: 0.20dB Typ
- MM: 0.20dB Typ

#### Return Loss

- SM: -55dB Typ
- MM: -37dB Typ

### Fewer Termination Steps —

XLR8 SC connectors ship factory-assembled, eliminating time-consuming field assembly of inner and outer connector bodies

### Enhanced Splice Integrity —

XLR8 connector termination process combines splicing and crimping in a single step, eliminating connector handling that can impact splice integrity

### Robust Polish Protection —

Entire connector termination process is completed with dust-cap in place, protecting the critical end face polish from contamination

### High Quality Performance —

Exceeds TIA standards for optical performance and fiber retention strength

## ORDERING INFORMATION

### Part #

### Description

#### LC Multimode

- FC1M-LC-5L-B12 . . . . . LC Simplex connector, 50/125µm laser optimized, 900µm buffered fiber\*, aqua boot (XGLO)  
 FC1M-LC-6MM-B80 . . . . . LC Simplex connector, 62.5/125µm multimode, 900µm buffered fiber\*, beige boot (LightSystem)  
 FC1M-LC-5MM-B01 . . . . . LC Simplex connector, 50/125µm multimode, 900µm buffered fiber\*, black boot (LightSystem)

#### LC Singlemode

- FC1M-LC-SM-B06 . . . . . LC Simplex connector, singlemode, 900µm buffered fiber\*, blue boot (XGLO and LightSystem)  
 FC1M-LCA-SM-B07 . . . . . LC Simplex connector, angled polished singlemode, 900µm buffered fiber\*, green boot (XGLO and LightSystem)

#### SC Multimode

- FC1M-SC-5L-B12 . . . . . SC Simplex connector, 50/125µm laser optimized, 900µm buffered fiber\*, aqua boot (XGLO)  
 FC1M-SC-6MM-B80 . . . . . SC Simplex connector, 62.5/125µm multimode, 900µm buffered fiber\*, beige boot (LightSystem)  
 FC1M-SC-5MM-B01 . . . . . SC Simplex connector, 50/125µm multimode, 900µm buffered fiber\*, black boot (LightSystem)

#### SC Singlemode

- FC1M-SC-SM-B06 . . . . . SC Simplex connector, singlemode, 900µm buffered fiber\*, blue boot (XGLO and LightSystem)  
 FC1M-SCA-SM-B07 . . . . . SC Simplex connector, angled polished singlemode, 900µm buffered fiber\*, green boot (XGLO and LightSystem)

### Note:

For use with 900µm tight buffer terminations only - Fan-out kits to transition from 250µm to 900µm can not be used with XLR8 connectivity.

### The Americas

Watertown, CT USA  
 Phone (1) 860 945 4200 US  
 Phone (1) 888 425 6165 Canada

### Europe/Middle East/Africa

Surrey, England  
 Phone (44) 0 1932 571771

### Asia/Pacific

Shanghai, P.R. China  
 Phone (86) 21 6390 6778

### Central & South America

Bogota, Colombia  
 Phone (571) 317 2121

