



KQ2 Union

Adapt Metric
to Inch Tubing

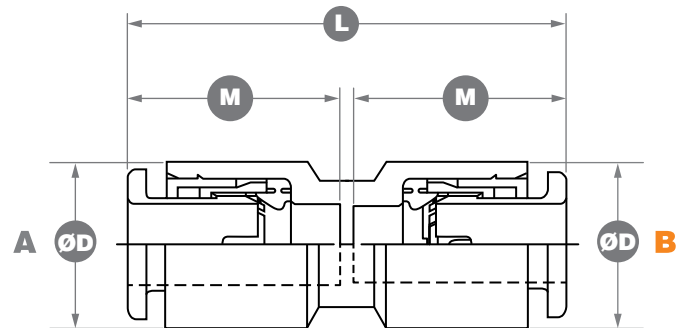
- Connect common inch tubing sizes to metric equivalents
- Union type One-touch fitting
- 3 models available
 - 1/4" x 6 mm
 - 3/8" x 10 mm
 - 1/2" x 12 mm

Ordering Information

Part Number	Applicable Tubing Size (O.D. inch X O.D. metric)	Similar Legacy Models
KQ2H06-07A-X562	ø1/4" x ø6mm	IN-289-666, KQ2H06-07-X562
KQ2H10-11A-X562	ø3/8" x ø10mm	IN-289-668, KQ2H10-11-X562
KQ2H12-13A-X562	ø1/2" x ø12mm	IN-289-669, KQ2H12-13-X562

Dimensions

Applicable Tubing O.D.		Model	ØD	L	M
(a) mm	(b) in				
ø6	ø1/4"	KQ2H06-07A-X562	11.1	27.6	13.3
ø10	ø3/8"	KQ2H10-11A-X562	15.9	32.2	15.6
ø12	ø1/2"	KQ2H12-13A-X562	19.3	35	17



Additional Options

Due to the interchangeability of 5/32" and 4 mm tubing as well as 5/16" and 8 mm, several standard KQ2 series unions offer additional conversion capabilities.

Unions

Part Number	Tubing Size
KQ2H01-03A	ø1/8" x ø4 mm (5/32")
KQ2H03-05A	ø3/16" x ø4 mm (5/32")
KQ2H03-07A	ø1/4" x ø4 mm (5/32")
KQ2H07-09A	ø1/4" x ø8mm (5/16")
KQ2H09-11A	ø3/8" x ø8mm (5/16")
KQ2H02-04A	ø2 mm x ø5/32" (4 mm)
KQ2H23-04A	ø3.2 mm x ø5/32" (4 mm)
KQ2H04-06A	ø6 mm x ø5/32" (4 mm)
KQ2H06-08A	ø6 mm x ø5/16" (8 mm)
KQ2H08-10A	ø10 mm x ø5/16" (8 mm)





KQ2 Reducers

Adapt Metric to Inch Tubing

- Connect common inch tubing sizes to metric equivalents
- Plug-in reducer type One-touch fitting
- 6 models available
 - 1/4" x 6 mm
 - 3/8" x 10 mm
 - 1/2" x 12 mm
 - 6 mm x 1/4"
 - 10 mm x 3/8"
 - 12mm x 1/2"

Ordering Information

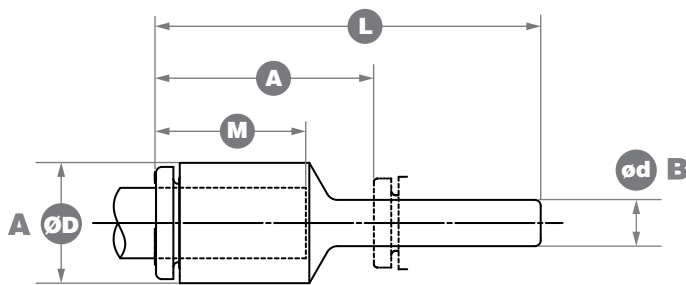
Part Number	Applicable Tubing O.D.	Applicable Fitting Size	Similar Legacy Models
KQ2R06-07A-X1045	ø6mm	ø1/4"	IN-289-523
KQ2R07-06A-X1045	ø1/4"	ø6mm	IN-289-201
KQ2R10-11A-X1045	ø10mm	ø3/8"	-
KQ2R11-10A-X1045	ø3/8"	ø10mm	-
KQ2R12-13A-X1045	ø12mm	ø1/2"	-
KQ2R13-12A-X1045	ø1/2"	ø12mm	-

Dimensions

Applicable Tubing O.D.		Applicable Fitting Size ød		Model	ØD	L	A	M
inch	mm	inch	mm					
-	ø6	ø1/4"	-	KQ2R06-07A-X1045	10	33.9	20.6	13.3
ø1/4"	-	-	ø6	KQ2R07-06A-X1045	11	32.9	19.6	
-	ø10	ø3/8"	-	KQ2R10-11A-X1045	15.6	41.2	25.6	15.6
ø3/8"	-	-	ø10	KQ2R11-10A-X1045	15.1	40.3	24.7	
-	ø12	ø1/2"	-	KQ2R12-13A-X1045	19	43.9	26.9	17
ø1/2"	-	-	ø12	KQ2R13-12A-X1045		45.1	28.1	

Additional Options

Due to the interchangeability of 5/32" and 4 mm tubing as well as 5/16" and 8 mm, several standard KQ2 series reducers offer additional conversion capabilities.



Plug-in Reducers

Part Number	Tubing Size	Fitting Size
KQ2R23-04A	ø3.2 mm	ø5/32"(4 mm)
KQ2R02-04A	ø2 mm	ø5/32"(4 mm)
KQ2R04-06A	ø5/32"(4 mm)	ø6 mm
KQ2R04-08A	ø4 mm (5/32")	ø8 mm (5/16")
KQ2R04-10A	ø5/32"(4 mm)	ø10 mm
KQ2R06-04A	ø6 mm	ø5/32"(4 mm)
KQ2R06-08A	ø6 mm	ø5/16" (8 mm)
KQ2R08-10A	ø5/16" (8 mm)	ø10 mm
KQ2R01-03A	ø1/8"	ø4 mm (5/32")
KQ2R03-05A	ø4 mm (5/32")	ø3/16"
KQ2R03-07A	ø4 mm (5/32")	ø1/4"
KQ2R05-09A	ø3/16"	ø8 mm (5/16")
KQ2R07-09A	ø1/4"	ø8 mm (5/16")
KQ2R09-11A	ø8 mm (5/16")	ø3/8"
KQ2R09-13A	ø8 mm (5/16")	ø1/2"

SMC Corporation of America
 10100 SMC Blvd. Noblesville, IN 46060
(800) SMC.SMC1 (762 - 7621)