

ALPTOP

AT-200B/800B(Z)

AT-200D/800D(Z)

AT-200PE/500PE(20)

AT-4K30P

POE Camera Series

User's Manual

www.alptopsecurity.com

support@alptopsecurity.com

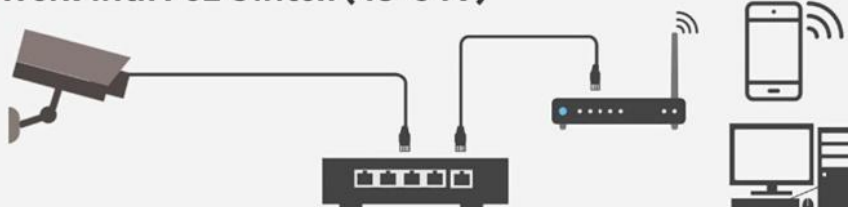
Table of Content	Page
1.Connecting the camera to system	03-03
2.Download Search Tool and change IP address	04-05
3.Accessing via Web Browser	06-09
4.Accessing via Client Software	10-12
5.Working with Onvif NVR	13-14
6.Add camera to Blue Iris	15-15
7.Operating via Danale Mobile App	16-20
8.Frequently Asked Questions	20-22

Due to the printing reasons, this manual may not be clear. Please go to our website to download the electronic file manual. Thank you for your understanding!

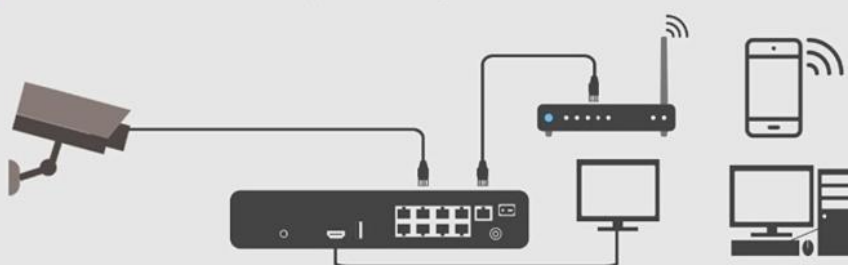
If you need more details about Danale APP,LMS Software Client ,Please download from our website.Thank you for your interest in our products.

1. Connecting the camera to system

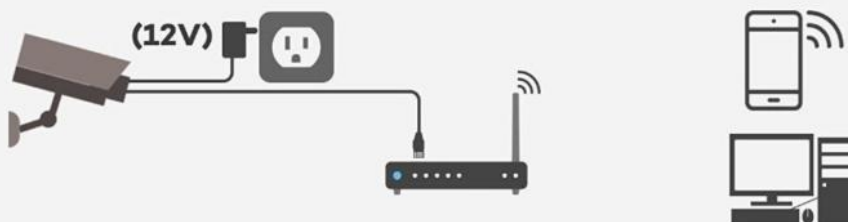
1 Work with PoE Switch (48-54V)



2 Work with PoE NVR (48-54V)



3 Work with Router



Note:

1. This camera works with ONVIF standard PoE NVR or PoE Switch with 48V-54V power supply, insufficient power supply will result in no picture.
2. The camera should be connected to an OPTIONAL DC 12V power supply if you do not use PoE (Power over Ethernet).
3. A Windows computer is more convenient for setup and troubleshooting.
4. Please choose a power supply method for the camera.

2.DownloadSearch Tool and change IP address

Most camera model come with DHCP reservations.You can also set cameras with static IP address via search tool.

Note:some model has the same default IP address after leaving the factory.

Default: IP address: 192.168.0.123, Username: admin, Password: 123456

2.1 Downloadsearchtool and get cameraip address

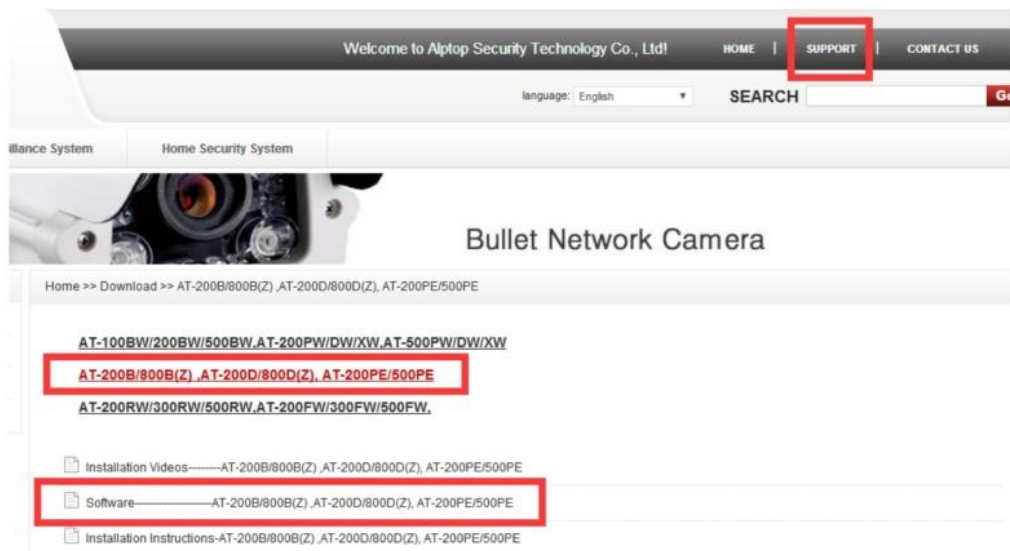
Visit our website www.alptopsecurity.com

Goto "SUPPORT"----"AT-200B/800B(Z),AT-200D/800D(Z),AT-200PE/500PE"---

"Software", download the search tool,

There are two versions of the search tool, one for Windows and the other for Mac.

Please select the correct version to download.



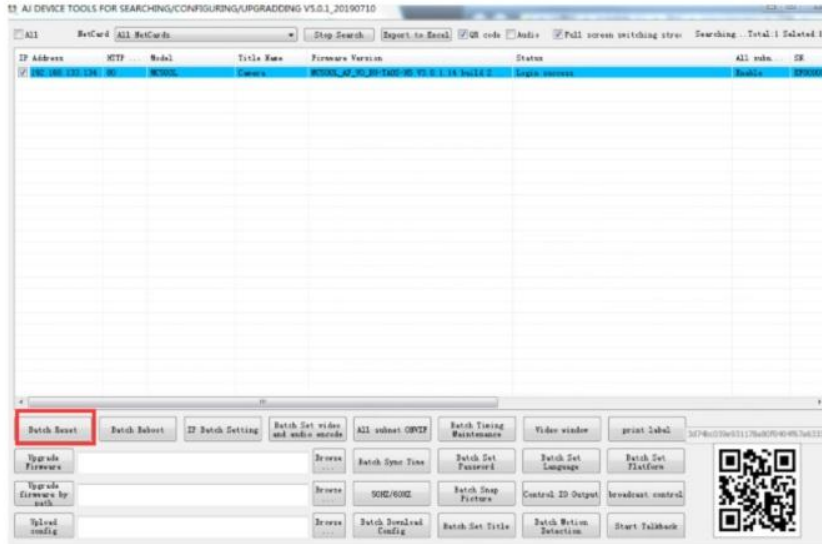
Installation language can be selected in the drop-down menu.



Open the search tool, then it will search out your camera IP address automatically.

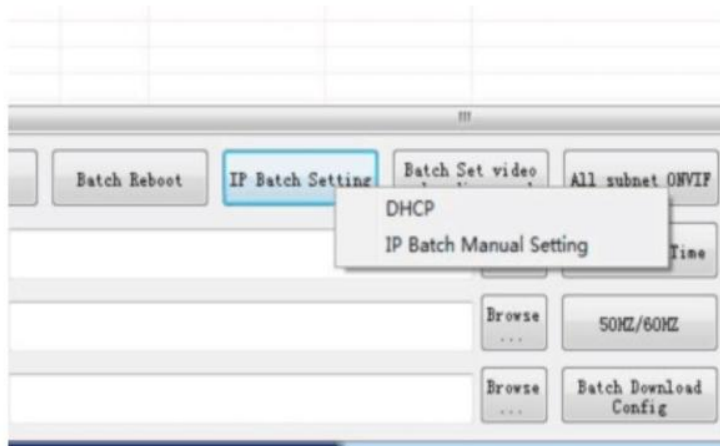
2.2 Restore to Factory Setting

Select camera and click "Batch Reset"



2.3 Revise camera IP address

Select camera, click "IP Batch Setting", You can enable DHCP or revise camera ip address directly.



Tips:

- 1. You can also use Hikvision search tool to find or change camera ip address.

3. Accessing via Web Browser

The camera support IE browser ,Firefox browser, Google Chrome, and Safari

1. Open the browser.

2. In the browser address bar, input the IP address of the network camera, and press the Enter key to enter the login interface.

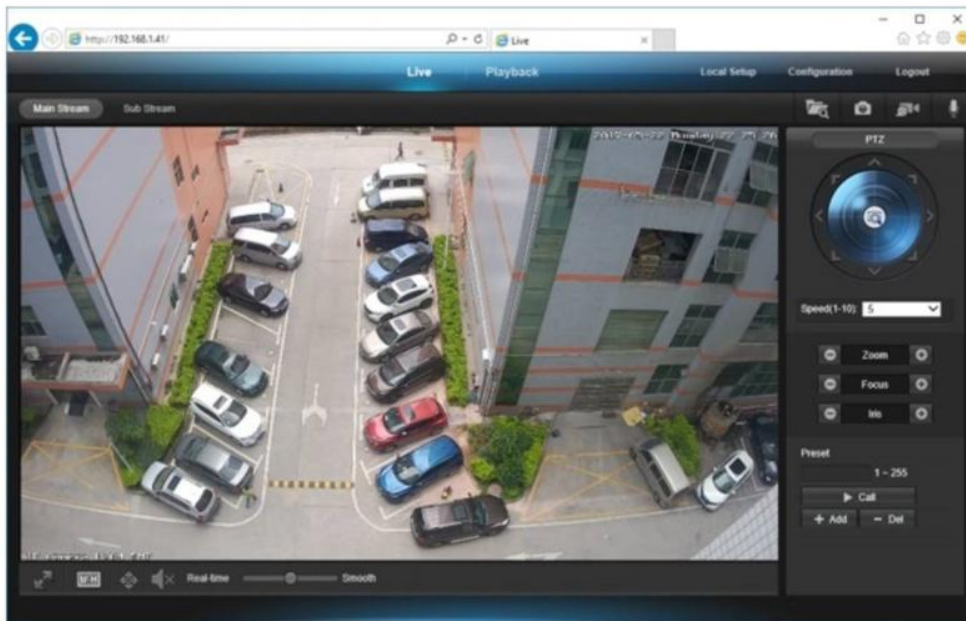


3. Input the user name(admin) and password(123456)

4. Select the English language from the drop down menu, Click Login

5. Install the plug-in before viewing the live video and managing the camera.

6. Reopen the web browser after the installation of the plug-in.



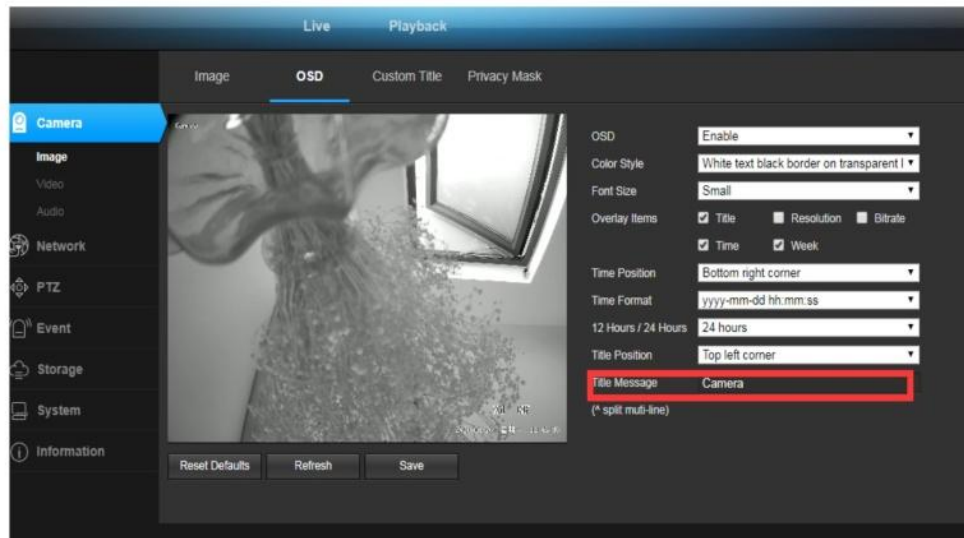
Note: Only the Motorized Auto Focus cameras can Zoom In and Zoom Out.

If there is a delay in video response when accessing remotely, please switch to Sub Stream instead.

General Configurations

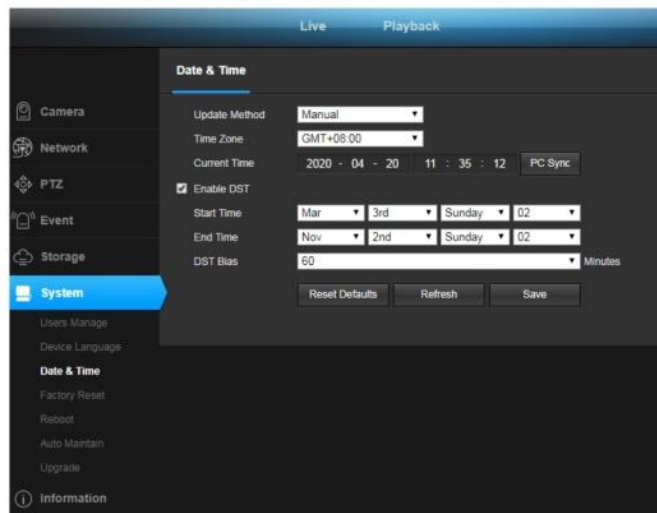
1) To modify the camera Title name and Time & Date

➤ Configuration > Camera > Image > OSD > Title Message



➤ Configuration > System > Time setup

There are two time update modes available, Manual and NTP.

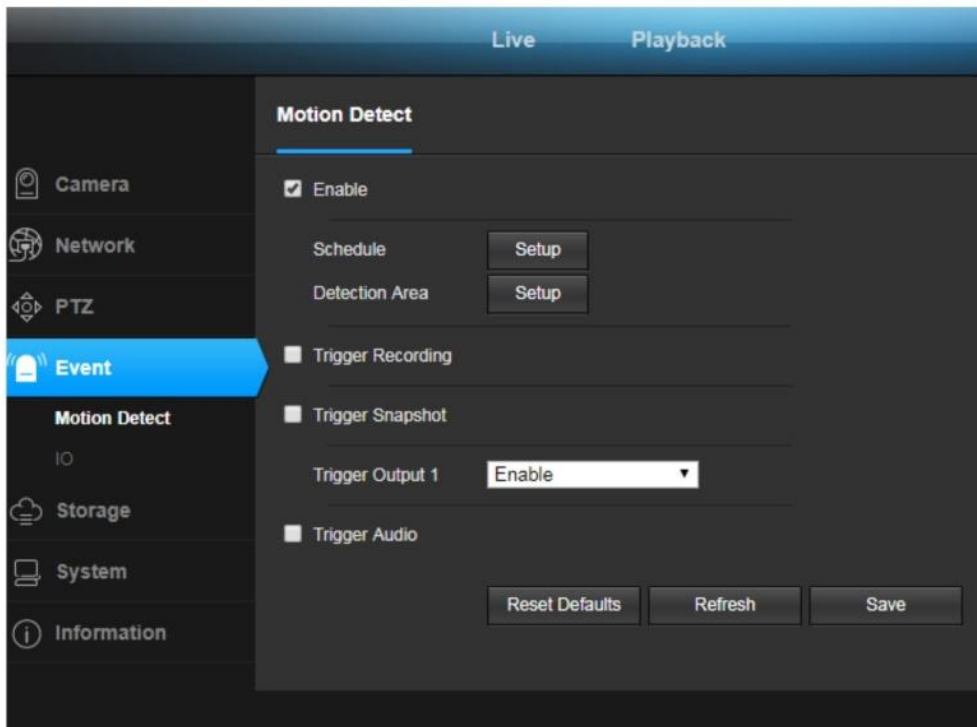


a. Select your Time Zone, and click PC Sync. Set up your DST (Daylight Savings Time) if needed, click Save. (Time and date will reset to 2000-01-01 if camera restarts)

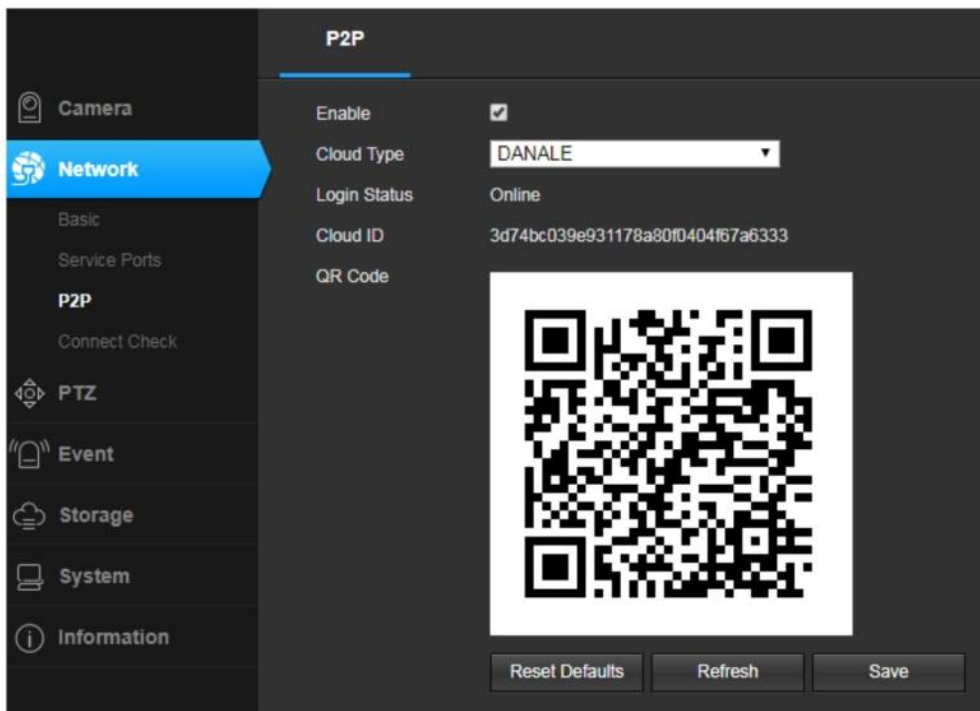
b. If the camera is connected to the Internet, you can set up a NTP server for the camera to sync the time and date automatically. We suggest you use NTP; if you choose Manual, the time will be reset to the default one once you reboot camera

2) To enable Motion Detection Alarm

➤ Configuration > Event > Motion Detection



3) To find the device Cloud ID and QR code for remote access, Configuration > Network > P2P



Using the P2P ID and QR code, you can access the camera remotely anywhere via smart phone with Internet access. Please register an account via mobile phone after installing the Danale APP from APP Store or Google Play Market, then login and add your camera to start previewing.

Or you can go to the website <https://cn.danale.com/download.html> to register if you need PC remote access. You can download client from the website to find out more. Windows and mac app are provided here, if you need instructions, please visit our official website. Tips: if the Login Status shows Offline, please check your Internet connection and IP camera TCP/IP Network configurations. Please make sure to use a valid DNS server IP in the TCP/IP Network setting.

4. Accessing via LMS Client Software

LMS Client is installed for Local viewing under LAN network.

4.1 PC software-LMS Software Client (only support Windows PC)

Visit our website: www.alptopsecurity.com, go to Support---Download---AT-200B/800B(Z),AT-200D/800D(Z),AT-200PE/500PE"-Software, LMS local client_windows.zip

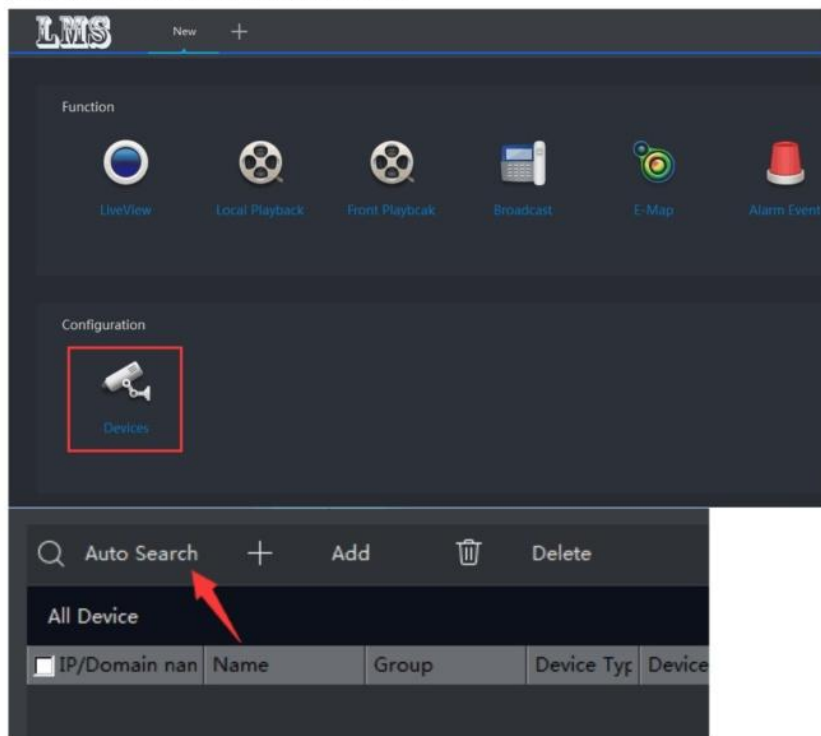
(Note: Please don't install Client Software on C drive, not support for Macintosh system)

Input user name(admin) and password (123456) to log in.

4.2 Add camera to LMS

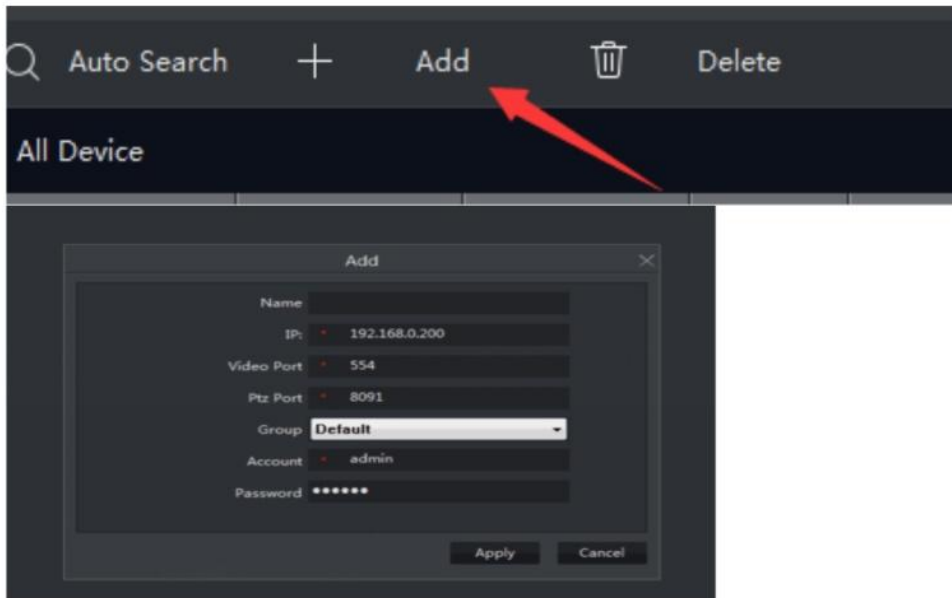
1) Automatic add

When you log into LMS, click "Device" icon, then click "Auto Search", it will automatically search camera within LAN network.



2) Manually add

Click "Add" button, You can manually add devices, including name, IP, video port, PTZ control port, grouping, account, and password (default setting: admin, 123456) for editing. * Required field.



4.3 Record Plan

The corresponding video recording plans can be customized in batches or individually, including timed recordings, motion detection recordings, alarm recordings, and clearing recordings.

You can save the timed recording, motion detection recording to your windows computer, Please refer to the figure below. The green range indicates the timing recording period, and the red range indicates the motion detection recording period. and recording will be stored on the **D drive by default.**

Each motion detection recording time is 1 minute, and the timed recording will generate multiple clip videos, each video is about 30 minutes.

(The camera has no alarm external interface, so it does not support alarm recording)

You can also check the corresponding video from our website. If you can't find the correct video, please contact us at support@alptopsecurity.com



3.3 PTZ control interface

Back to liveview,click the arrow as below, PTZ control box will pop up



5. Working with Onvif NVR

The IP camera supports standard ONVIF protocol and it can be added to third-party video recorder.

5.1 Before pairing cameras to the NVR, make sure the NVR and cameras have valid and matching IP scheme.



Note: Some of the PoE NVR supports Plug & play, which allows you to get video without manually search and add. If Plug & play feature is not available or not compatible, please follow the manual step and select ONVIF protocol as the pairing protocol. (camera default password:123456)

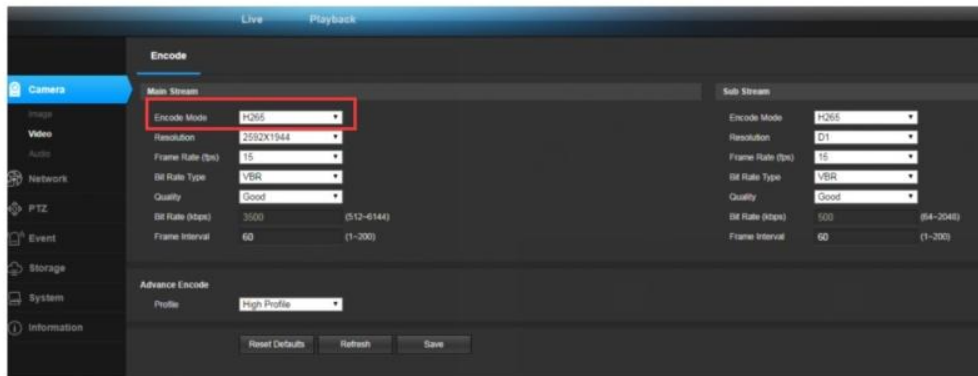
If the POE NVR can not discover the connected camera or can not display the camera video, please check its internal POE interface IP configuration and make sure all connected cameras and NVR POE interface are in the same subnet scheme. For more help please contact the both NVR and IP camera suppliers for technical assistance.

5.2 Dual H.265&H.264

- ▶ This camera supports Dual H.265 & H.264 Code. Built in standard ONVIF protocol, can be added to third-party video recorder.
- ▶ The H.265 encode cameras can compress the video data to a very low bit rates which save at least 50% video data storage than normal H.264 camera.

Notice: Only configure the camera to H.265 mode when your NVR supports H.265. If your NVR only support H.264, Please modify the main stream and sub stream to H.264. Otherwise, there will be no image.

- ▶ Configuration > Camera > Video-Encode

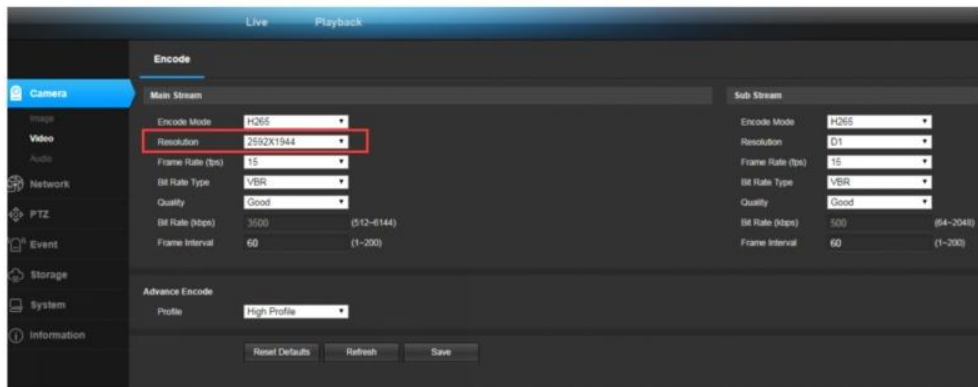


5.3. Modify IP address

Notice: The IP address of the camera must be in the same subnet of your NVR. Please refer to the NVR user manual of your NVR to confirm the IP address Subnet.

5.4 Resolution of Camera

- ▶ The recording resolution of NVR must be compatible with the resolution of camera. If the NVR only support 1080P, You must modify the resolution of the camera to be compatible with NVR.
- ▶ Configuration > Camera > Video > Resolution



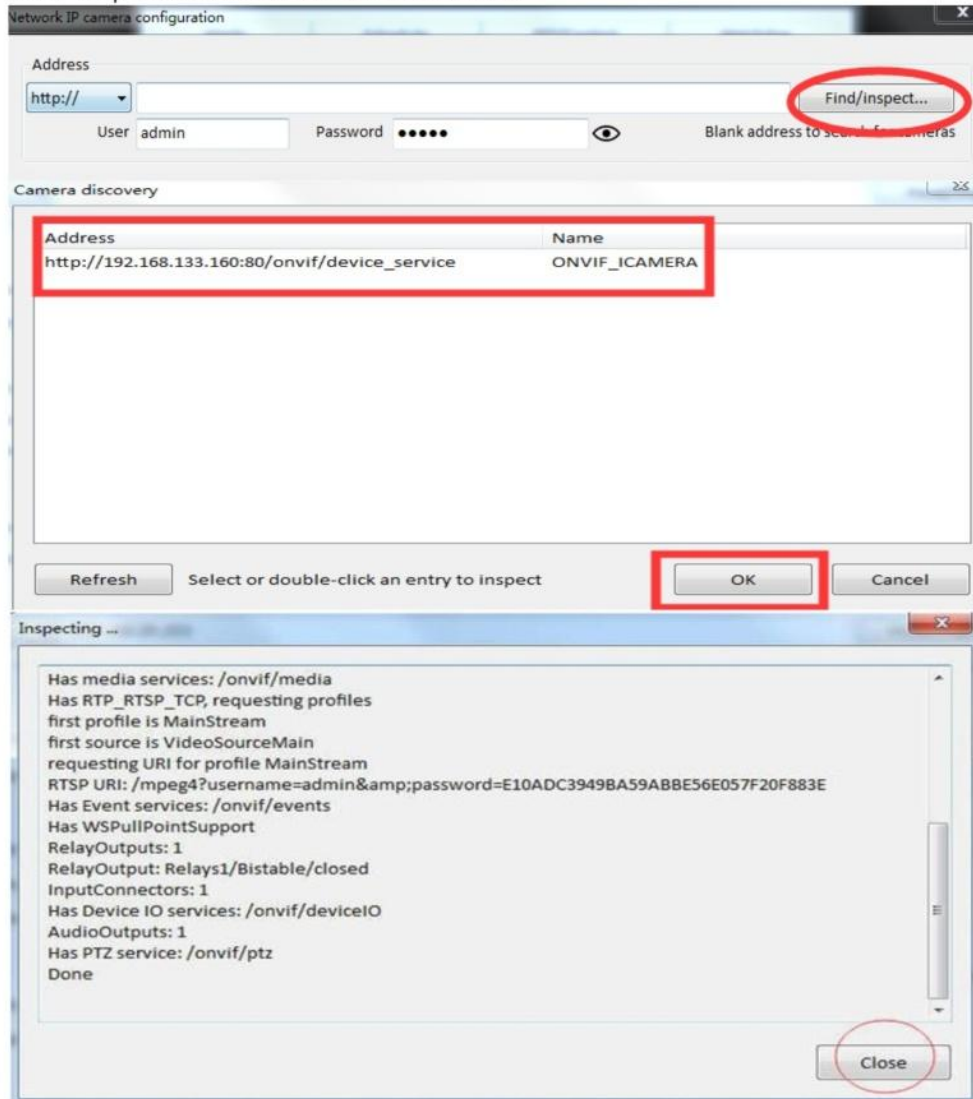
Tips:

No Signal or Picture when you plug to POE NVR.

- ▶ Check the resolution of NVR, does it support 5.0MP or above?
Some old NVRs only support 1080P input. So you need to modify the resolution of the camera through web interface of camera.
- ▶ Does your NVR support H.265 compression?
Some old NVRs only support H. 264. If camera default to H. 265, You need to modify the main stream and sub stream to H. 264 to compatible with NVR.
- ▶ Is the IP Address of the Camera in the same Network segment of the NVR ?
You need to modify the IP Address of the Camera.

6.Add camera to Blue Iris

1.Use "http" and find camera within Lan network.



Note:The password is the camera's login password, if you change camera password,here password must be consistent.

7. Operating via Danale App

Danale is an application for mobile devices. With the App, you can view live image of the camera, receive alarm notification. You can open Cloud Service to store motion detection videos and 7/24 videos.

7.1. Add Camera


Download Phone APP-“Danale” from App Store for iPhone,from Google Play for Android Phone.Or scan the QR code in the following.

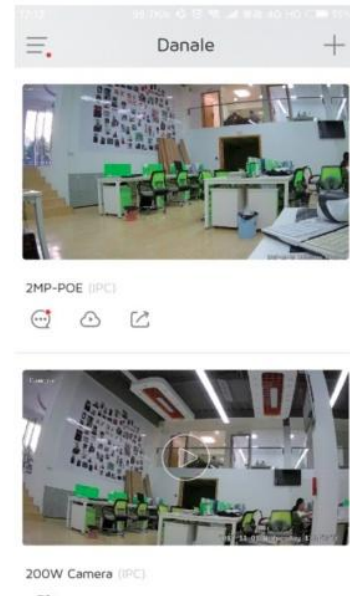
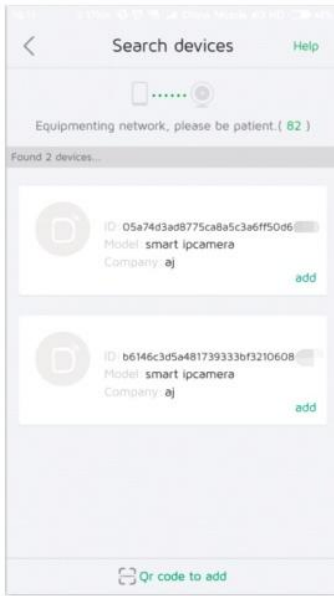
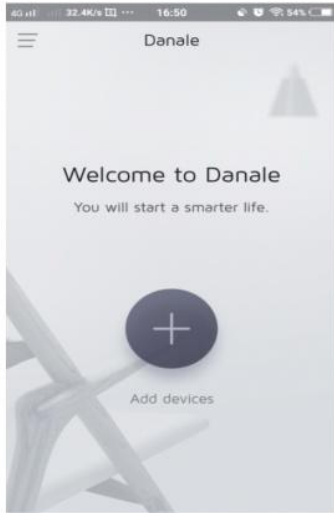


Open APP,register an account first and login camera as below.

Note: If it reminds whether allow Danale to access photos,media content and files on your device,please click“allow”.

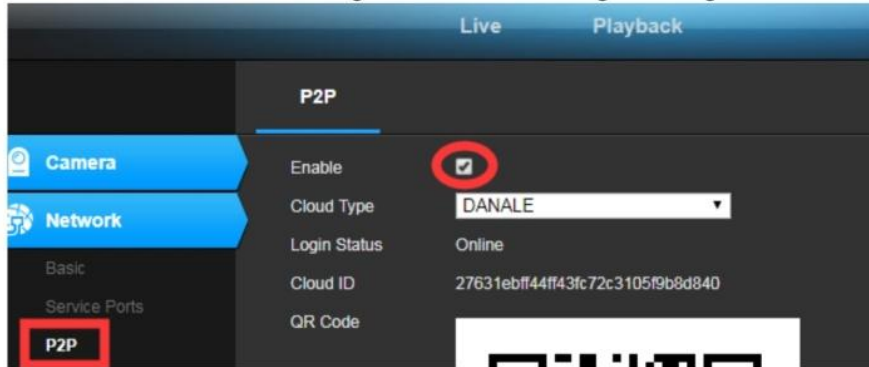


Click  button and turn on GPS positioning to get the WiFi name, Input wifi password (please ensure your phone and camera connected under the same wifi) Click "next" to find camera in the Lan and click "add".



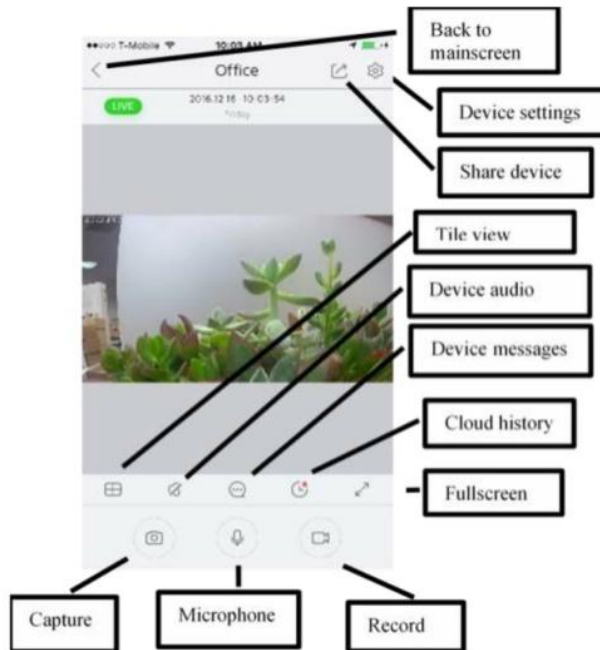
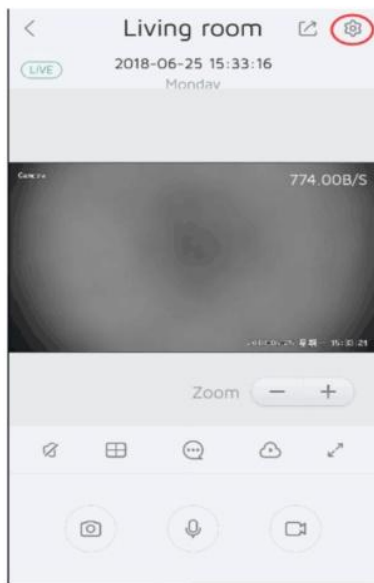
Note:

Please make sure P2P is enable. Log into web browser and go to configuration - network - P2P.



7.2 Settings

Click on the phone preview screen, And click  button to enter the settings of the camera.



7.2.1 Security Setting:

- 1.Motion detection: Activate motion detection and alarm notification, sensitivity is adjustable
- 2.Sound detection: Optional. Please check the product details.

7.2.2 Device Settings

Network Setting:

- 1.WiFi Setting:Please ignore since this camera does not support WiFi.
- 2.Lan Setting:You can set static IP here.

Time Setting:Select time zone and set camera’s time.

Power Frequency:Default 50hz

SD Card Settings:Optional.

Initialization:

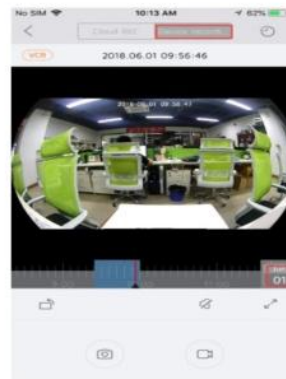
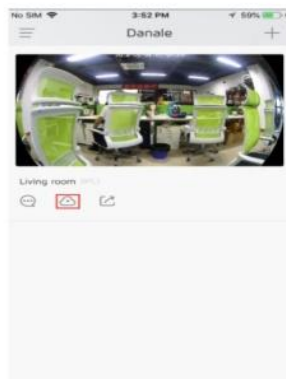
- 1.Restart Device:Restart camera
- 2.Format SD card:Optional
- 3.Restore Factory Setting:Reset camera



7.3 How to play back the recordings

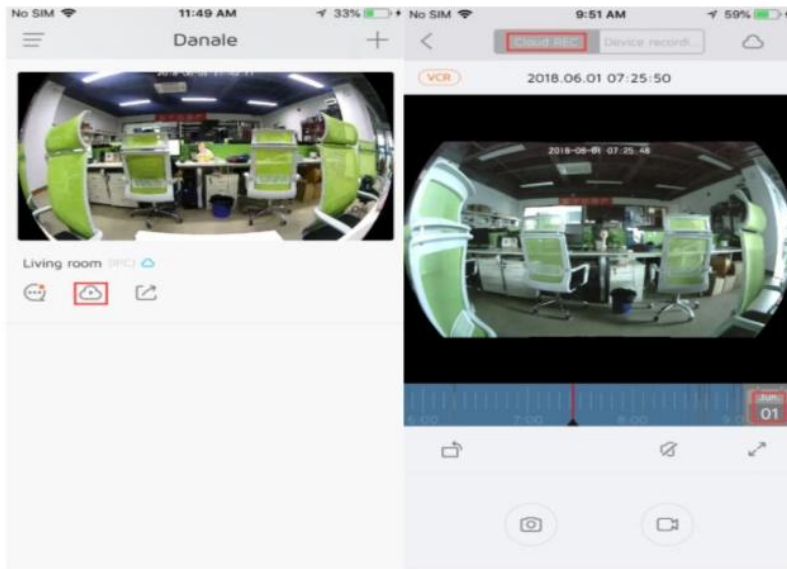
7.3.1 Playback the recordings in the SD card

Click the playback icon. Select “Device recording” to play back the recordings. You can choose the date and drag the recording progress bar below for your selective playback.

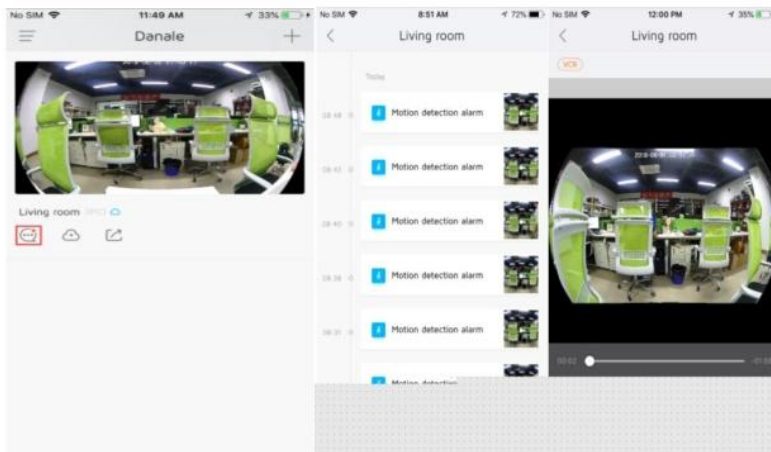


7.3.2 Playback the recordings in the cloud storage,Click the playback icon.

Select "Cloud REC" to play back the recordings. You can choose the date and drag the recording progress bar below for your selective playback.




7.3.3 Check the motion detection recordings,Click the information icon.Click the corresponding motion detection information to watch the video.

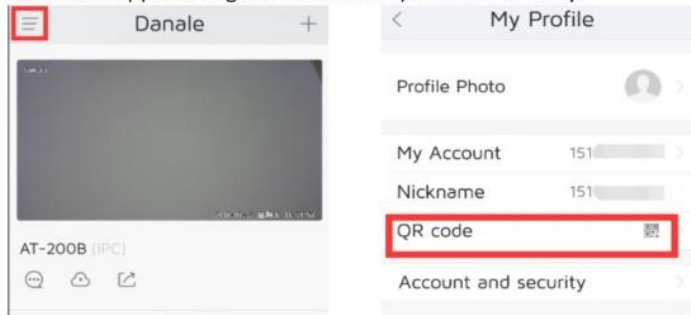


Note: You are not able to watch the motion detection recordings if the cloud storage service is not activated or the service has expired.

7.4 Sharing Camera

Please share your camera if your family member want to add this camera.

Click  button—Click “share”---Add user---Scan another user’s account ID(Let another download app and register an account) or add manually.



8. Frequently Asked Questions

1. Why can't I open the default IP address 192.168.0.123 via web browser?

The default IP address may not match your LAN's IP scheme. Check your computer's IP address before accessing the camera. If the IP address does not match the 192.168.0.x scheme, please install the IP search tool from the CD to modify the camera's IP address. Make sure the IP address of the camera matches the LAN IP scheme. For example, if the your LAN is 192.168.1.xxx, then set the IP camera to 192.168.1.123 and so on.

2. How to reset the password?

The default Username: admin, Password: 123456. If you lost the password or would to reset the camera's setting, please install the search tool to search the camera IP and click Reset factory button.

3. How to upgrade the IP camera?

1) Ask the supplier for the suitable firmware, 2) you can use the web browser, search tool, or PC client to upgrade the camera, 3) go to the Configuration > System > update, click browse and select the firmware, then click Upgrade button and wait for the operation to complete.

4. How to fetch the RTSP video stream and http snapshot?

- 1) Main Stream: `rtsp://IP:554/h264?username=admin&password=123456`
- 2) Sub Stream: `rtsp://IP:554/h264cif?username=admin&password=123456`
- 3) low resolution snapshot: `http://IP/cgi-bin/snapshot.cgi?stream=1`
- 4) HD snapshot : <http://IP/cgi-bin/snapshot.cgi?stream=0>

5. Why does the NVR not show image after adding your IP camera?

- 1) Make sure you selected the right protocol and enter the correct username and password when adding the cameras, 2) Make sure the NVR and IP camera are the same IP scheme.(eg. NVR:192.168.1.x, and IP camera:192.168.1.y), 3) try changing the camera encode mode to H.264 if the NVR can't support H.265. (Configuration -> Camera -> Video > Encode mode: H.264)

6. How to make the NVR record in motion detection mode?

- 1) Enable the IP camera motion detection function via web browser or UC client,
- 2) add the IP camera via ONVIF protocol, 3) change the NVR record mode to Motion Detection mode, 4) check the NVR screen MD icon and try playback. Please refer to your NVR's manual for NVR's motion record option.

7. Where can i control the motorized auto focus lens zoom?

- 1) Using the camera's web interface;
- 2) Control by PC client software;
- 3) Roll the mouse wheel at the search tool preview window;
- 4) Find the PTZ menu in your NVR to control lens zoom

8.No found devices after inputing WiFi password or can not view this camera with danale app?

- 1.Log in to Internet Explorer and go to Configuration - Network - P2P to enable it.
- 2.Please ensure that the camera is powered and the light on the ethernet cable is blinking.
- 3.Please ensure that the 2.4G WiFi network you use in your ip camera and the cellphone is the same.
- 4.The computer and the camera should belong to the same subnet.if not ,Please use search tool to change camera IP address.For more search tool information,
- 5.All permissions should allow to turn on after installing Danale APP.
- 6.Please reset this camera with search tool.
- 7.Contact us at support@alptopsecurity.com and get firmware for upgrading.