



# Experience Observation.

Closer than ever before.





## Nature has many faces ...

... beautiful, mysterious – and sometimes unpredictable. Rich with fascinating aspects to explore, the great outdoors unites nature lovers worldwide. And once you have fallen under its spell, you'll have a hard time doing without it. Here at Leica, we feel the same sense of wonder. That's why we are passionate about manufacturing high-quality precision optics that provide more intense visual experiences. Our aim is to allow you to discover nature's creatures up close, without disturbing them in their habitats.

Use our products to expand your natural vision and enjoy details that would have remained forever hidden to the naked eye. Mindful. Intense. Sustainable. On the following pages, we invite you to learn more about us and our range of products. We manufacture them with the greatest care, achieving absolute precision and the highest possible quality. For a truly visionary visual experience.

Your Leica Camera AG

## Content.



4

History, service and quality



6

Product overview



8

Binoculars



34

Spotting scopes



40

Digiscoping



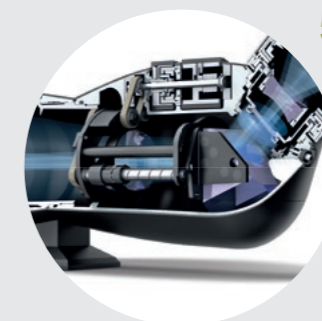
46

Rangefinders



52

Accessories



56

Technical data

## Our quest for the perfect visual experience leads to ...

... expertly balanced images, down to the finest detail. We achieve this by doing more than boosting the amount of light transmitted through the lens to the eye. All Leica products offer what we consider to be the perfect combination of high light transmission, exceptional color fidelity and ideal contrasts – thanks to optimized stray light suppression – along with intuitive operation and a long service life. Your advantages are crystal clear. If, during twilight, you can discern details in the undergrowth that nobody else can see; if you can recognize the finest structures despite massive backlighting when the sun is low; if you can identify a bird's precise species by detecting subtle mottling in its plumage – then you know: you are using a Leica.

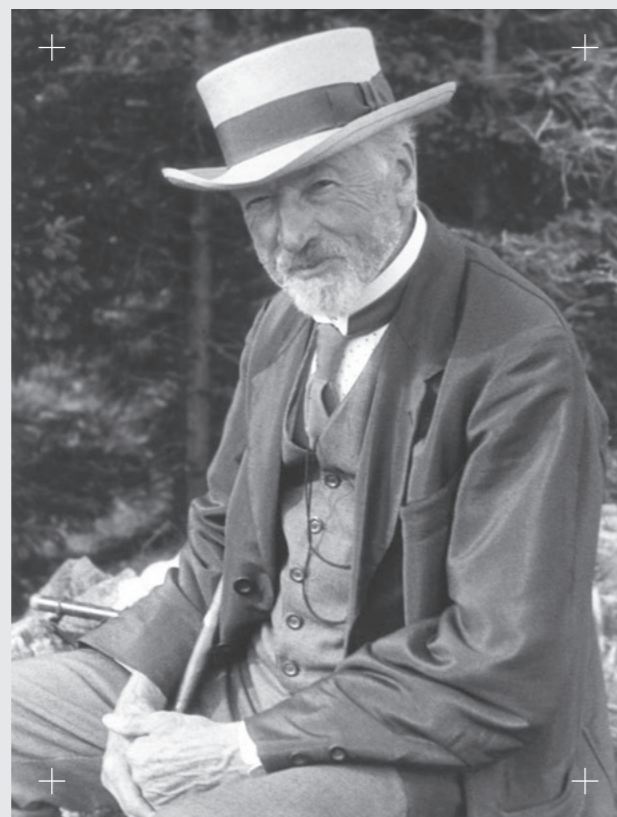
Our products are the result of over 100 years of knowledge and experience in developing and manufacturing optical systems for cameras, sport optics and microscopy. Our optics designers continuously develop their software for minimizing reflections and stray light, enabling increasingly complex simulations. And because our developers are also users, improvements can be tested and implemented directly. Shaped by practical experience, our ergonomic, timeless product design features rugged, precise and extremely reliable mechanics made from the highest-quality materials, such as magnesium or titanium.

Everything we create shares the same lofty goal: **offering you the perfect visual experience for many years to come!**

## Making history means ...

... setting something in motion. Shaping the future means dedicating yourself to striving for new innovation every single day.

Our story begins with Dr. Ernst Leitz, a passionate nature lover and businessman who decisively influenced the development of our products and still shapes their character today. In May 1907, after three years of research and development, series production of the first binoculars began: the Binocle 6 x 18. These were followed by many other sport optics products, all of inimitable quality – and all born of the same commitment to devising ever-more innovative optics. Over a century of experience, and many exceptional milestones, has placed us in a leading position worldwide. Leica wasn't just the first choice back then; it continues to be synonymous with high quality, absolute reliability and durability today. Naturally, we're not going to stop at these achievements, and our work on tomorrow's innovative technologies continues unabated, as the next chapter of our success story unfolds.



Dr. Ernst Leitz

## For us quality is a process...

... that we're always questioning and refining. Everyday, we work to continually improve this quality to ensure our customers' lifelong enjoyment of each of our optical products. Motivated, dedicated employees are our most important asset. They're the basis for our success. They make Leica what it is: a co-operative partnership that understands the importance of character.

... that we're always questioning and refining. Everyday, we work to continually improve this quality to ensure our customers' lifelong enjoyment of each of our optical products. Motivated, dedicated employees are our most important asset. They're the basis for our success. They make Leica what it is: a co-operative partnership that understands the importance of character.

### Our product quality

For over 100 years, Leica has been synonymous with outstanding quality in optics and engineering. Our technicians give priority to maximum mechanical precision and mini-



# At a glance. Our range of birding products.

## NOCTIVID



LEICA Noctivid  
8 x 42  
Page 14



LEICA Noctivid  
10 x 42  
Page 14

## ULTRAVID HD-PLUS



LEICA Ultravid  
8 x 32 HD-Plus  
Page 18



LEICA Ultravid  
10 x 32 HD-Plus  
Page 18



LEICA Ultravid  
7 x 42 HD-Plus  
Page 18



LEICA Ultravid  
8 x 42 HD-Plus  
Page 18



LEICA Ultravid  
10 x 42 HD-Plus  
Page 18



LEICA Ultravid  
8 x 50 HD-Plus  
Page 18



LEICA Ultravid  
10 x 50 HD-Plus  
Page 18



LEICA Ultravid  
12 x 50 HD-Plus  
Page 18

## ULTRAVID BLACKLINE



LEICA Ultravid  
8 x 42 Blackline  
Page 20



LEICA Ultravid  
10 x 42 Blackline  
Page 20



LEICA Ultravid  
8 x 42 Silverline  
Page 21



LEICA Ultravid  
10 x 42 Silverline  
Page 21

## ULTRAVID SILVERLINE

## ULTRAVID COMPACTS



LEICA Ultravid  
8 x 20 BL/BR/Silverline  
Page 22



LEICA Ultravid  
10 x 25 BL/BR/Silverline  
Page 22



LEICA Ultravid  
8 x 20 Colorline  
Page 23



LEICA Ultravid  
10 x 25 Colorline  
Page 23

## TRINOVID HD



LEICA Trinovid  
8 x 42 HD  
Page 28



LEICA Trinovid  
10 x 42 HD  
Page 28

## TRINOVID COMPACTS



LEICA Trinovid  
8 x 20 BCA  
Page 30



LEICA Trinovid  
10 x 25 BCA  
Page 30

## DUOVID



LEICA Duovid  
8+12 x 42  
Page 32



LEICA Duovid  
10+15 x 50  
Page 32

## MONOVID



LEICA Monovid  
8 x 20  
Page 24

## APO-TELEVID



LEICA APO Televid 65  
Page 38



LEICA APO Televid 65 W  
Page 38



LEICA APO Televid 82  
Page 38



LEICA APO Televid 82 W  
Page 38

# Binoculars.



## See more, recognize more and experience more.

Beyond reach, at a seemingly insurmountable distances. In the world of nature, we human beings often encounter our limitations. With Leica binoculars, it becomes easy to conquer these distances and discover the details otherwise hidden to the human eye. Even when the nearest mountain peak is miles away, a Leica Trinovid glass makes it easy to pinpoint the cross on its summit. With the aid of Leica Ultravid compact binoculars, the frescos and paintings in the lofty domes of churches are brought so close that it is possible to see the individual brush strokes of the artist.

At the opera, a festival or a sporting event, a pair of Leica Ultravid Silverline or Blackline binoculars will always reserve you a seat in the front row. Where cautious or timid birds or animals quickly take flight at the slightest movement or noise, Leica Noctivid binoculars allow the observation of the most natural and fascinating aspects of their behaviour. Binoculars help you to overcome your visual limitations and bring you closer to reveal what must otherwise remain hidden to your eyes. See, recognize and experience more.

# Leica binoculars. For breathtaking visual experiences.

No matter whether for travel, leisure, birding or wildlife watching – our programme of binoculars is certain to offer the right companion for your individual needs. Discover a uniquely new dimension of viewing with your Leica binoculars.

### Noctivid

The Noctivid is inspired by nature itself. It reflects the perfect balance of properties that, as in the world of nature, is essential to making life possible in the most demanding situations. This new family of Leica premium binoculars promises you incomparable viewing experiences. Discover a perfect equilibrium of clearly-defined, pin-sharp contours, exceptional contrast and unrivalled brilliance. Bring distant worlds to your eyes – and see them in a way you have never experienced before.

### Ultravid HD-Plus

When your expectations of binoculars are high, you simply cannot ignore the Leica Ultravid HD-Plus models. Robust and proven over many years of constant use, they make every viewing moment an unforgettable experience and transform the love of details into pure passion.

### Trinovid

The trusty and discreet companion for every tour, whether on a Caribbean cruise or a safari in the heart of Africa, Trinovid binoculars are the most versatile solution for all occasions and should never be left at home when you travel. They impress their users with best optical performance, excellent mechanical properties and extremely easy handling.

## Inside Noctivid.

### Construction of the Noctivid 10x42.



“With a camera, this image is captured by a sensor; with binoculars, the image is stored in your memory – forever.”

Sigrun Kammans



## Behind the scenes. How a pair of binoculars is made.

I was quite overawed when I began my first day of work in 1987. I feel that the lesson I was told back then still plays a crucial role: “Innovations are the consequence of constant dialogue and intense exchange with the users of our products.” Understanding our customers’ needs is the first step – but for the second, physics comes into play. But how do we go about developing a new line of binoculars? What kind of opportunities do we have to expand the natural boundaries of perception? And how can we make the new Noctivid line even better?

Scientific research, new materials and manufacturing methods also offer new opportunities for the improvement of the mechanical and optical components of binoculars. When I started out at Leica, it was virtually impossible to develop binocular systems with more than 80% transmission. Nowadays, we have optical glasses with particularly high transmission properties. In the Noctivid binoculars, we use such glasses for the lenses, but above all for the prisms, where the ray paths through glass are longest. In addition to this, we have also made further improvements to the special coatings that are applied to all lenses and prisms to minimise reflections.

All these improvements contribute to almost lossless transmission of the entire visible spectrum and colors of the light entering the binoculars through their optical systems and to the eye. This results in a very bright and color-neutral viewing image. People often ask me whether this is suitable for observation during the day or night. The

answer is: for both, eminently. We naturally also analyze them according to the requirements of international standards and norms, e.g. with transmission measurement equipment. In the particular case of our Noctivid binoculars, in terms of color fidelity and rendition, we even come extraordinarily close to the so-called achromatic locus, in other words, the point of absolute color neutrality.

Everything is well engineered, impeccable. The secret behind such perfection is revealed by the lesson learnt on my first day at work. Teamwork is essential in the development of binoculars. The optical systems of the Noctivid, for example, were designed by my colleague Michael Hartmann. For the Noctivid line, he actually managed to further improve the already exceptional resolving powers our HD-Plus binoculars are known for. The bright and clear viewing image is now richer in contrast and even sharper.

Here at Leica Camera AG, synergy between our work and that of the photographic lens designers brings significant benefits for both sides. The expectations to be fulfilled by a camera lens are very similar. Customers for both product lines expect best contrast, finest resolution of details and the ability to see their subjects in what comes as close as possible to 3D – in both cases, a perfect image. The only difference: In the case of a camera, this image is captured by a sensor and stored while, in the case of a pair of binoculars, it is captured by the eyes and stored in your memories – eternally.



Read more about Sigrun Kammans’ experiences at [blog.leica-birding.com](https://blog.leica-birding.com)





# LEICA NOCTIVID. UNPARALLELED VIEWING EXPERIENCE.

Distilled from 110 years of experience. Named after the Athene noctua, the symbol of wisdom, knowledge and insight, the Leica Noctivid are the best binoculars we've ever made. Stylish and compact, they offer the perfect balance of attributes for crystal clear seeing experiences. Easy one-handed use, large eyepieces, incredible depth of field, clean contrasts and the perfect combination of light transmission and color fidelity. Unparalleled viewing.



## Leica Noctivid. Progress with a clear perspective.

Inspired by nature and its perfect balance, from abilities that are essential to survival in various habitats, the Noctivid also possesses a perfect balance of the best characteristics from more than a century of experience of optical excellence and precision engineering. Its incomparable resolving power promises unique viewing experiences with clear-cut and pin-sharp contours, dazzling contrast and unrivalled brilliance.



### The globe effect

Particularly in the case of binoculars, we must take the so-called globe effect into account. Already familiar from the early days of telescope technology, the middle of the image affected by the globe effect frequently appears significantly closer to the viewer than the edges. Panning across a scene with such a telescope gives the impression of a glass ball rolling through the image. This effect is a result of the physiology of the human eye and is particularly pronounced in binoculars with strong image field flatness. We take this effect into consideration when designing out optical systems and ensure that the eventual user enjoys a natural and undisturbed visual experience when viewing a scene by the appropriate positioning of lens elements within the optical system.

### Viewing behaviour and the power of the eye to accommodate

With the particularly large oculars and long eye-relief of the Noctivid binoculars, every user, either with or without glasses, quickly and easily finds the ideal position for viewing through the oculars. Simultaneously, the already outstanding closest viewing distance of 1.8 meters can be significantly reduced by the accommodation capability of the user's eyes - i.e. the dynamic adaptation of the refractive index within the eye.

### Precise interaction of optics and precision engineering

Lens elements must be positioned with absolute precision at the right distances from one another in the optical system and must be precisely centred in the tubes of the binoculars. To ensure this, and to guarantee that the viewing image is not degraded by false light, our optical designers work very closely with our precision engineers and constructors of the mechanical components. They take advantage of the latest technologies, for example to ensure perfect focusing with consistently high resolving power, or to keep the construction as light and as compact as possible. In the production process, permissible tolerances are frequently measured in thousandths of millimeters. Despite this, the construction of the Noctivid still resists the most extreme stresses and rough handling. Our customer may watch ivory gulls in a snowstorm just as well as gigantic herds of zebra in the middle of the African savannah. Such versatile, robust and resilient pieces of equipment can only be made when we utilise only the finest, most modern, most resilient and hard wearing materials.



### Fast and precise focusing

Focusing is extremely precise and it takes only two turns of the focusing wheel to shift the focus from the closest distance of 1.8 meters to infinity. At the same time, the large, ergonomically located focus wheel with excellent grip allows delicate and precise focusing for even the smallest differences in distance. In true Leica tradition, diopter compensation is integrated in the focusing wheel, can be securely locked and is easily visible through a viewing window.

# Noctivid binoculars.

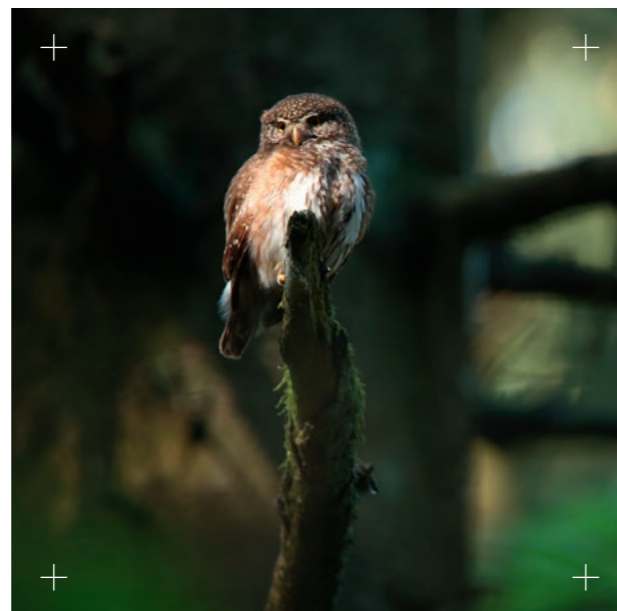


High-contrast, brilliant and razor-sharp: the perfect balance.

## A century of knowledge has come to life.

Today, more than a century of experience and expertise in the development of optical devices for long-distance observation, microscopes and cameras has been brought together in a new generation of Leica binoculars – the Noctivid family. Not only compact in size, stylish and elegant, but also unbelievably robust and resilient. The true milestones are however set by the mechanical construction and optical systems of this new family of Leica binoculars. In the case of its optical qualities, the Noctivid unites the best of all the most innovative and proven technologies at our disposal.

The Schott HT™ (High Transmission) glasses ensure the amazingly natural color rendition and exceptional transmission values of the Noctivid line. Extremely complex and innovative baffle systems for the suppression of stray light guarantee maximum contrast and an absolute minimum of stray light. New, high-temperature plasma deposition processes for highest-quality coatings ensure perfectly balanced transmission characteristics at an outstanding level throughout the entire waveband of visible light. These leads to even better color-neutrality in the viewing image in daylight hours and in the unfavourable conditions of the late twilight hours and under overcast skies.



### The benefits at a glance

- extraordinarily plastic viewing experience thanks to perfectly harmonised combination of light transmission, stray light suppression and levels of contrast
- perfect color-neutrality and brilliance
- large oculars and long eye-relief distance of 19 mm for overwhelmingly fast impressions and comfortable viewing
- extremely compact size and ideal weight distribution guarantee fatigue-free observation for longer periods: the centre of gravity of the binoculars lies in the middle, as a direct extension of the wrist



The modification of the radii of the lens surfaces made it possible to achieve additional, significant improvements to the sharpness at the edges of the viewing image without negative effects on resolving power. A further result of all these improvements is a much more plastic viewing experience.

Thanks to the perfect and consistent harmonization of an entire spectrum of modern technologies, Noctivid binoculars deliver an impressively natural viewing experience that is as plastic as seen with the human eye – only better.



### LEICA NOCTIVID 8 x 42

- high light-gathering power, bright viewing image late into the twilight hours, thanks to a large exit pupil and best contrast performance
- steadiest viewing image, thanks to large fields of view and perfect ergonomics
- natural viewing impression, thanks to ideal color-neutrality
- broad field of view for barrier-free overviews at short distances and maximized viewing performance at long distances



### LEICA NOCTIVID 10 x 42

- 10 x magnification for optimum resolution of details
- outstanding stray light suppression and high contrast enable viewing of finest structures under even the most unfavourable conditions
- relaxed, fatigue-free observation, thanks to compact size and ideal weight distribution





“Look up and enjoy!”

David Lindo

## Fascination observation. How to be an urban birder.

What does a young boy growing up in North London do? Exploring the wildlife in front of his door, certainly! This might sound somewhat strange to town people, but birds were the things I became fascinated with most. Unfortunately, I didn't have a mentor to take me out into the countryside. So I had to find wildlife on my doorstep. Watching over my back garden in North London every morning before school, I was astonished at the array of species that passed through including unexpected birds like lesser spotted woodpecker, reed bunting and goldcrest. Thus my urban birding was born. I have stayed with a motto to this day: Look up and enjoy!

Check the goings on in your garden and start staring out of the office window watching for any avian action – although try not to make it appear obvious as it could get you into trouble! Leica Ultravid 8x20 compact binoculars are great for watching backyard bird activity from the comfort of your home. Despite their optical excellence they are so small that they can be practically hidden in your hands.

### Feed the birds

Gardens are great training grounds for the apprentice urban birder. If you put out food for the local birds, your backyard may become a veritable fast food restaurant. Just stick a couple of nut containers or seed feeders out and wait for them to be discovered. Remember to place your feeders

in the open away from bushes and fences where predators could lurk. Eventually, they may allow close approach and you will be able to observe them in the mornings from your kitchen window through sleepy eyes. A pair of Ultravid 10x42 HD-PLUS binoculars will bring you even closer to the birds to show you their full splendor.

### Retune your mind

Some people find the thought of watching birds in built up areas incongruous. You will need to start seeing your local urban environment as how a bird might see a city environment. Start seeing buildings as rocky outcrops filled with crevices and ledges and imagine that each green spot in the city is actually a rich nature reserve for birds. Once you have convinced yourself of that then you will start noticing birds that you never expected to see.

### Find a patch

Your transition to urban birder extraordinaire is nearly complete, but no birder is a proper birder without a local patch. Find an area close to your home or place of work and start watching it regularly. Get to know the local resident birds and over the course of a year you will notice changes with the different seasonal visitors making appearances. When you start loving this patch, you know you have truly become an urban birder.



Read more about David Lindo's experiences at [blog.leica-birding.com](http://blog.leica-birding.com)



# Ultravid HD-Plus.



The benefits of optimum image brightness, outstanding color fidelity and compact dimensions.

## Ultravid binoculars. The perfect viewing experience.

Those looking for the best in binoculars simply cannot overlook the Leica Ultravid HD and HD Plus models. They transform any moment into an unforgettable experience and the love of detail into pure passion. These high-end binoculars demonstrate the state of the art: fluoride lenses ensure brilliant color fidelity and perfect contrast, delivering unparalleled image brightness and captivating clarity. Their outstanding performance is enhanced by efficient stray-light suppression for cutting-edge contrast.

The focusing mechanism of the Ultravid models is unerringly smooth – and less than two turns take you from the shortest focusing distance to infinity. Reliably, quickly and precisely. The central hinge axis is machined from high-tensile titanium, while the body is manufactured from ultra-lightweight magnesium. In addition, all models are waterproof to 16.5 feet (5 meters). The AquaDura® coating reliably protects the lenses from water and dirt. The patented twist-up eyecups with two click-stops offer the best in viewing comfort, even for users wearing glasses.



### The benefits at a glance

- 92% light transmission, for use from dawn to dusk
- compact and ultra-lightweight
- uncompromising optical performance
- HD-Plus optics for optimum image brightness with exceptional color fidelity
- designed for all conditions, with water and dirt repellent AquaDura® coating and rugged rubber armoring



### LEICA ULTRAVID 8 x 32 HD-PLUS

- comfortable experience: easy to use, steady visual impression
- extra-wide field of view: 404 ft/135 m
- compact, lightweight and powerful: the handy companion for long tours, from alpine ascents to birding on unpredictable terrain



### LEICA ULTRAVID 10 x 32 HD-PLUS

- brilliant viewing experiences, particularly during daylight hours
- the small, compact, lightweight companion for safaris and adventure travel: ideal for detailed observations over longer distances



### LEICA ULTRAVID 7 x 42 HD-PLUS

- 7x magnification, for steady and detailed impressions, even on a swaying ship
- keep your eye on everything with an ultra-wide field of view: 420 ft/140 m
- the perfect companion at sea or when light is fading: magnificent panorama, impressively steady image and crisp contrasts into the late twilight hours



### LEICA ULTRAVID 8 x 42 HD-PLUS

- observe a broad area, even at short distances: great for locating objects
- 8x magnification offers the perfect combination of detail resolution, broad panorama and steady image
- the universal all-rounder, ideal for almost every occasion



### LEICA ULTRAVID 10 x 42 HD-PLUS

- incredibly detailed impressions, even over the farthest distances
- highest contrast and very high light transmission for impressive views – even under adverse lighting conditions
- the ideal glass for details: from animal observations over long distances to detail resolution at short distances, during daylight and twilight



### LEICA ULTRAVID 8 x 50 HD-PLUS

- bright images, even at night – thanks to 50 mm front lens diameter
- the generous exit pupil enables fast, safe viewing
- ideal for night viewing, with compact dimensions and low weight



### LEICA ULTRAVID 10 x 50 HD-PLUS

- balanced ratio of magnification to brightness
- excellent twilight performance
- perfect for longer viewing, even in unfavorable light conditions, from daylight well into twilight



### LEICA ULTRAVID 12 x 50 HD-PLUS

- outstanding for viewing over longer distances
- reliable detail resolution and identification
- for detailed, longer observation
- steadier image when mounted on a monopod or tripod

# Ultravid Blackline.



Sleek, classic design and black leather trim for extra-special viewing experiences.

## Extremely lightweight and powerful.

With the Ultravid Blackline 42, you recognize even the hidden facets – whether in the big city, where you can easily admire every architectural detail, or on a nature walk, where the binoculars give you even more insights.

The Ultravid Blackline 42 offers highest technical precision in a compact package. The large focusing barrel is very easy to use. Leather offers a comfortable grip and cuts down on weight. And the point of optimum focus can always be found quickly – little more than one complete turn takes you from infinity to the shortest focusing distance.

Thanks to their classic leather trim, the Ultravid Blackline 42 models are not only particularly attractive, they also weigh only about 25 oz/700 g. In fact, they're among the lightest 42mm binoculars in the premium segment.



### LEICA ULTRAVID 8x42 BLACKLINE

- ideal all-rounder: high-contrast viewing in daylight and twilight; good detail resolution
- optimum ratio of magnification to field of view, brightness, and weight
- wide field of view: 389 ft/130 m



### LEICA ULTRAVID 10x42 BLACKLINE

- high detail resolution thanks to 10x magnification
- ideal for daylight viewing at greater distances
- generous field of view: 336 ft/112m

# Ultravid Silverline.



A synonym for ease, style and class in viewing optics.

## Exclusive design for unforgettable moments.

Whatever outdoor activity you undertake, you can count on the Silverline 8x42 and 10x42 binoculars. They're not only designed to last, they're also ideal for use in conditions with low light or poor visibility.

Compact and lightweight, the exclusive housing contains remarkably precise technology. The large, well-designed focusing wheel is extremely practical and convenient. In addition, Silverline binoculars are designed to sit comfortably in your hand and let you set the focus quickly and accurately in every situation. And they're among the lightest 42mm binoculars in the premium segment, weighing in at approximately 25 oz/700g, like the Blackline models.



### LEICA ULTRAVID 8x42 SILVERLINE

- high-contrast viewing, good detail resolution
- optimum ratio of magnification to field of view, brightness and weight
- wide field of view: 389 ft/130 m



### LEICA ULTRAVID 10x42 SILVERLINE

- high detail resolution thanks to 10x magnification
- ideal for daylight viewing at greater distances
- generous field of view: 336 ft/112m

# Ultravid Compacts.



## LEICA ULTRAVID 8 x 20 Blackline

- classic, elegant leather provides excellent grip
- extremely lightweight: just 8.1 oz/230 g



## LEICA ULTRAVID 8 x 20 BR

- unparalleled compact size
- extremely versatile, thanks to 8x magnification: optimum detail resolution at close-up limit (5.9 ft/1.8 m) and outstanding panoramas at great distances
- dimensions: 4.4 x 3.7 x 1.9 in / 111 x 93 x 39 mm



## LEICA ULTRAVID 8 x 20 Silverline

- classic, elegant leather provides excellent grip
- extremely lightweight: just 8.1 oz/230 g

## The benchmark for compact binoculars. Handy and versatile.

The Ultravid compacts are outstanding companions for the demanding observer, particularly on long tours where every ounce counts. Hardly larger than a first-aid kit, the binoculars barely add weight and feature convenient dimensions, a focusing wheel with maximum grip and impressive optical quality. Brilliant, contrast-rich, high-resolution images as well as outstanding stray-light suppression set these models apart in their class. Brighter and sharper than most other binoculars of this lens size, these compact Ultravid models are true to the high standard of the Leica Ultravid class.

The diopter is adjusted with the touch of a button. Thanks to the double hinge, they can be easily folded and stored – but they're too good-looking to keep hidden away! Available in the rubber-armored BR version, the classic Blackline, eye-catching Colorline or the elegant Silverline – take your pick!



## LEICA ULTRAVID 10 x 25 Blackline

- classic, elegant leather provides excellent grip
- very light in weight: just 9 oz/255 g



## LEICA ULTRAVID 10 x 25 BR

- large field of view: 295 ft at 3281 ft (90 m at 1000 m)
- full rubber armoring for maximum protection
- 10x magnification for a richly detailed view
- dimensions: 4.4 x 4.4 x 1.9 in / 111 x 112 x 39 mm



## LEICA ULTRAVID 10 x 25 Silverline

- classic, elegant leather provides excellent grip
- very light in weight: just 9 oz/255 g

# Ultravid Colorline.



## Show your colors with Colorline.

For over 100 years, Leica has stood for uncompromising quality in innovative optical products. Products as exciting as life itself. Each is a high-precision masterpiece designed to extend the natural limits of perception. Discover the wonders of the world in unparalleled brilliance, perfect image quality and breathtaking natural color.

Are you looking for new impressions? Eager to experience new horizons? Then you're ready for the binoculars of the Leica Colorline range, with their array of elegant, genuine leathers offering a secure and comfortable grip. Stow your Colorline in its matching leather case, and set off on your stylish discovery tour!

### Colors:

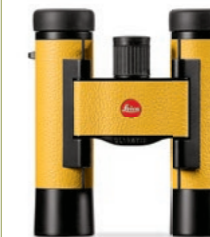
- capri blue
- cherry red
- lemon yellow
- apple green
- dove blue

Supplied with a high-quality leather case.



## LEICA ULTRAVID 8 x 20 Colorline

- tiny dimensions: 4.4 x 3.7 x 1.9 in / 111 x 93 x 39 mm
- close-up limit: only 5.9 ft/1.8 m
- 8 x magnification for optimum detail resolution at closest range and outstanding panoramas in the far distance
- convenient double-hinge folding mechanism



## LEICA ULTRAVID 10 x 25 Colorline

- large field of view: 295 ft at 3281 ft (90 m at 1000 m)
- 10 x magnification for richly detailed viewing, even at great distances
- compact dimensions: 4.4 x 4.4 x 1.9 in / 111 x 112 x 39 mm
- 5 stylish colors

# Monovid.

+



+

Lightweight, brilliant,  
versatile and rugged.

+

+

## Elegant design, outstanding optics.

The Monovid 8x20 always at the ready - in the city, at the opera, the theater, as well as in the great outdoors. Your take-anywhere companion lets you keep an eye on everything and detect even the finest details on the buildings or in the faces of the actors and singers on stage.

The Monovid 8x20 is lightweight, handy and fits inside any purse without attracting attention. Thanks to the included close-up accessory lens, objects as close as 10-12in (25-30cm) can be viewed in great detail, no matter whether you want to examine the bus schedule or the veins of a flower. Simply twist the accessory lens onto the objective lens. You'll be astounded by the high quality, the 8 x magnification and the elegant design.



### The benefits at a glance

- brilliant, high-contrast, razor-sharp images
- versatile, convenient, and rugged
- weighs just 4 oz / 112 g
- close-up lens enables macro effect
- nitrogen filling prevents internal fogging
- water and dirt repellent AquaDura® coating
- waterproof to 15.5 ft / 5 m
- all-round protection, thanks to high-quality leather case with silent magnetic closure



### LEICA MONOVID 8x20

- 8 x magnification for steady, brilliant images.
- small, lightweight and compact: always at hand
- available in various colors and versions
- astounding macro observations thanks to the accessory close-up lens (included)

## Color variations and accessories.



MONOVID BLACK

MONOVID RED

MONOVID SILVER

CARRYING STRAP &  
LEATHER CASE

You will experience a lot more when you watch the wildlife through your binoculars!

## Into the wild. Behind the dark.

5:00 a.m. – for the past half hour, the zebra-striped jeep has been speeding down bumpy roads along the edge of Ngorongoro Crater. I envy my neighbor Gert, snoring on the seat beside me. We’re bouncing along in the back of the jeep and he’s sleeping like a log. Outside, the Tanzanian night is still pitch dark; but soon the sun is going to rise over Ngorongoro Crater. While we are driving, two green dots suddenly light up on the road ahead. The driver slowly puts on the brakes and comes to a standstill.

“Sir, sir, your binoculars, please!” Darweshi, our guide, asks for my Trinovid 8x42 HD. “Are you sure? You hardly see further than three meters.” Gert has woken up and is staring into the darkness ahead, as excited as I am. We actually have no idea what to expect. A spotted hyena, a warthog, or perhaps another Thomson’s gazelle? It must be something special – Darweshi quickly takes my binoculars. A few seconds later, he gives it back, whispering excitedly: “Leopard, leopard!”

We can’t wait to see the silhouette a bit better. Gert and I butt heads as we try to look past the front seats and out the windshield, fascinated by the glowing green dots. But

without any binoculars, we only saw more of the pitch dark. “Sir, why don’t you use the binoculars!” Darweshi insists, and he’s right – it’s as if we’d switched on the lights outdoors. The big cat’s silhouette becomes clearly visible. The jeep’s weak headlamps provide enough light for Trinovid HD to reveal the beautiful pattern of contrasting spots on the animal’s fur. Wow, I hadn’t dared to hope that we’d see a leopard! Slowly and elegantly, the predatory cat turns its head, leaves the road and lets us pass. “Yes, sir, today we’ll see lots of wonderful things!”

We laugh, elated. I had wondered whether an early-morning adventure while on vacation would be worthwhile, but now my doubts have vanished into thin air. “I never thought that the binoculars would let us see so much more, even when it’s so dark”, Gert admits. “Oh yes, everyone on safari should bring good binoculars along. You don’t want to stare into the dark for two hours when you go on a safari, do you? You will experience a lot more when you watch the wildlife through your binoculars!” Darweshi chuckles and already sees another savanna’s inhabitant ...



Read more at [blog.leica-birding.com](https://blog.leica-birding.com)



# Trinovid HD 42.



With the new Trinovid HD, you're right up close – everywhere and anytime.

## Trinovid binoculars. Ready for anything, anywhere.

The new Trinovid HD 42 binoculars are designed for the widest array of uses and expertly combine impressive optical performance, outstanding mechanical features and easy, intuitive operation. Thanks to the time-tested Leica optics, the Trinovid HD offers excellent contrasts, optimum color reproduction and very good light transmission. The rubber armoring provides maximum grip in any weather and makes the glass incomparably robust. A well-designed Neoprene carrying harness completes the range of features, ensuring a high level of wear comfort, fast access and secure stowing.

All full-size Trinovid binoculars are supplied with this handy Adventure-Strap, which can be used as a comfortable and convenient carrying strap as well as a carrying case, hip belt and binocular belt. What's more, the Adventure-Strap also offers optimum protection against rain and dirt. For even more breathtaking visual impressions – anytime, anywhere.



### The benefits at a glance

- top-quality Leica optics for high-contrast, razor-sharp images and optimum color fidelity
- innovative carrying harness for quick and convenient use
- compact design – ideally balanced and light in weight
- large fields of view offer excellent panoramas, even for distant, unpredictable terrain



Includes the innovative Adventure-Strap carrying system.



### LEICA TRINOVID 8 x 42 HD

- pleasantly steady viewing, even on long and strenuous trips thanks to large exit pupil
- bright visual impressions well into the twilight hours
- generous fields of view for outstanding panoramas, even at extreme distances



### LEICA TRINOVID 10 x 42 HD

- richly detailed impressions at all distances
- outstanding close-up limit: under 6.2ft/1.9m
- ideal contrast and transmission for subtle color nuances and finest details

# Trinovid Compacts.

+

+



Light and compact design, reliable optics.

+

+

## Exceptional and rugged.

The Trinovid 8x20 BCA and 10x25 BCA are high-quality compact binoculars that, in favorable light, can hold their own against many larger models. These handy pocket-sized companions are the ideal choice whenever equipment volume and weight are a concern. Reliable functionality, sturdy construction, high-class optics, compact dimensions and low weight – these features set the Trinovid BCA apart. Leica's own HDC® multi-layer coating ensures color fidelity and high-contrast viewing, under even the most challenging light conditions.



### The benefits at a glance

- ideal imaging performance in a pocket-sized format, with HDC® multi-layer coating for color fidelity and high-contrast images
- fast, intuitive use with easy operation and excellent eye relief for even more comfortable viewing
- lightweight, handy, compact and splash-proof



### LEICA TRINOVID 8 x 20 BCA

- compact dimensions, high performance
- 8 x magnification for pleasant scanning and steady viewing
- clear field of view



### LEICA TRINOVID 10 x 25 BCA

- low in weight, rich in visual detail
- outstanding contrast and brilliant clarity
- longitudinal ribs in the outer armoring for an even better grip



# Duovid.

+



+

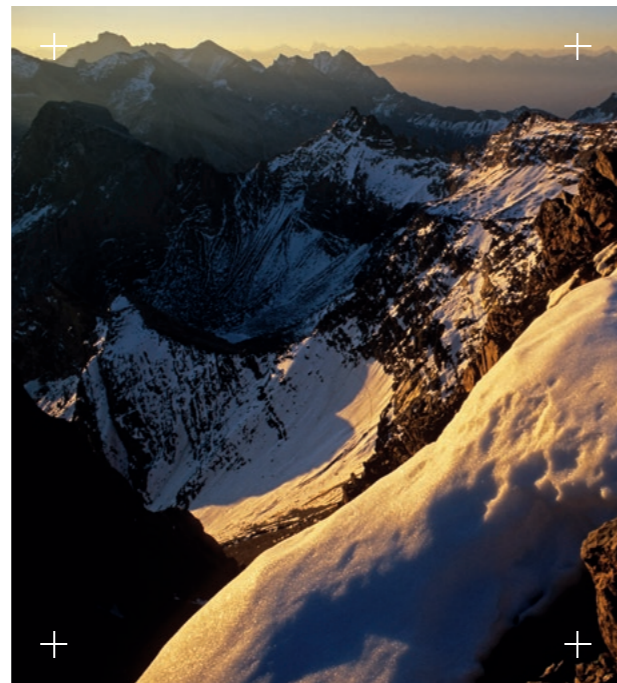
Extraordinary flexibility  
with two magnifications  
in a single glass.

+

## One-of-a-kind flexibility.

For broad scanning or detailed observation, over long distances or in low-light situations – the Duovid models are always at the ready. Equipped with two magnifications, these unique binoculars provide exceptional flexibility. No other premium glass offers this advantage. Switch between levels of magnification with just two easy movements. Once set, the diopter value is maintained – thanks to the automatic diopter compensation function ADC®.

The ergonomic eye cups with two click-stops offer the best in viewing comfort, even for users wearing glasses.



### The benefits at a glance

- two magnifications in one glass
- Automatic Diopter Compensation ADC®
- exceptional image quality in all viewing situations
- protective aluminum housing, rubber armoring for a secure grip



### LEICA DUOVID 8+12x42

- the handy all-rounder for highly flexible use on a wide variety of terrain
- 8 x magnification for steady, relaxed observation with large field of view
- 12 x magnification for fine detail, even from far distances



### LEICA DUOVID 10+15x50

- ideal for nature observation over longer distances – from dawn to dusk
- 10 x magnification for steady viewing with outstanding depth of field
- 15 x magnification for razor-sharp details
- includes a tripod adapter for more steady viewing

## Spotting scopes & digiscoping.



## The best moments ...

... are the ones most easily missed. And they're irretrievable. With the Leica digiscoping system, you observe the fascinating world of animals and plants in razor-sharp, brilliant images – as if you were right up close.

Back in 1994, Leica launched the world's first high-performance spotting scopes for terrestrial observation. These products featured high magnifications, broad fields of view and an imaging performance that remains outstanding, even by current standards. The proven variants – angled or straight viewing with 62mm or 82mm front lens diameters – remain in our product portfolio to this day.

Our ambitious goal is to always stand at the pinnacle of research, combining state-of-the-art imaging performance

and the very best mechanics for a unique visual experience. Today, more than ever before, our products provide uncompromising flexibility, brilliant optics and superior contrasts. Highest-resolution imaging at magnifications of up to 90x? Not a problem for the APO-Televid with the 1.8x extender. And all with exceptionally compact dimensions, intuitive operation and – thanks to the 25x–50x WW ASPH. eyepiece – particularly large fields of view.

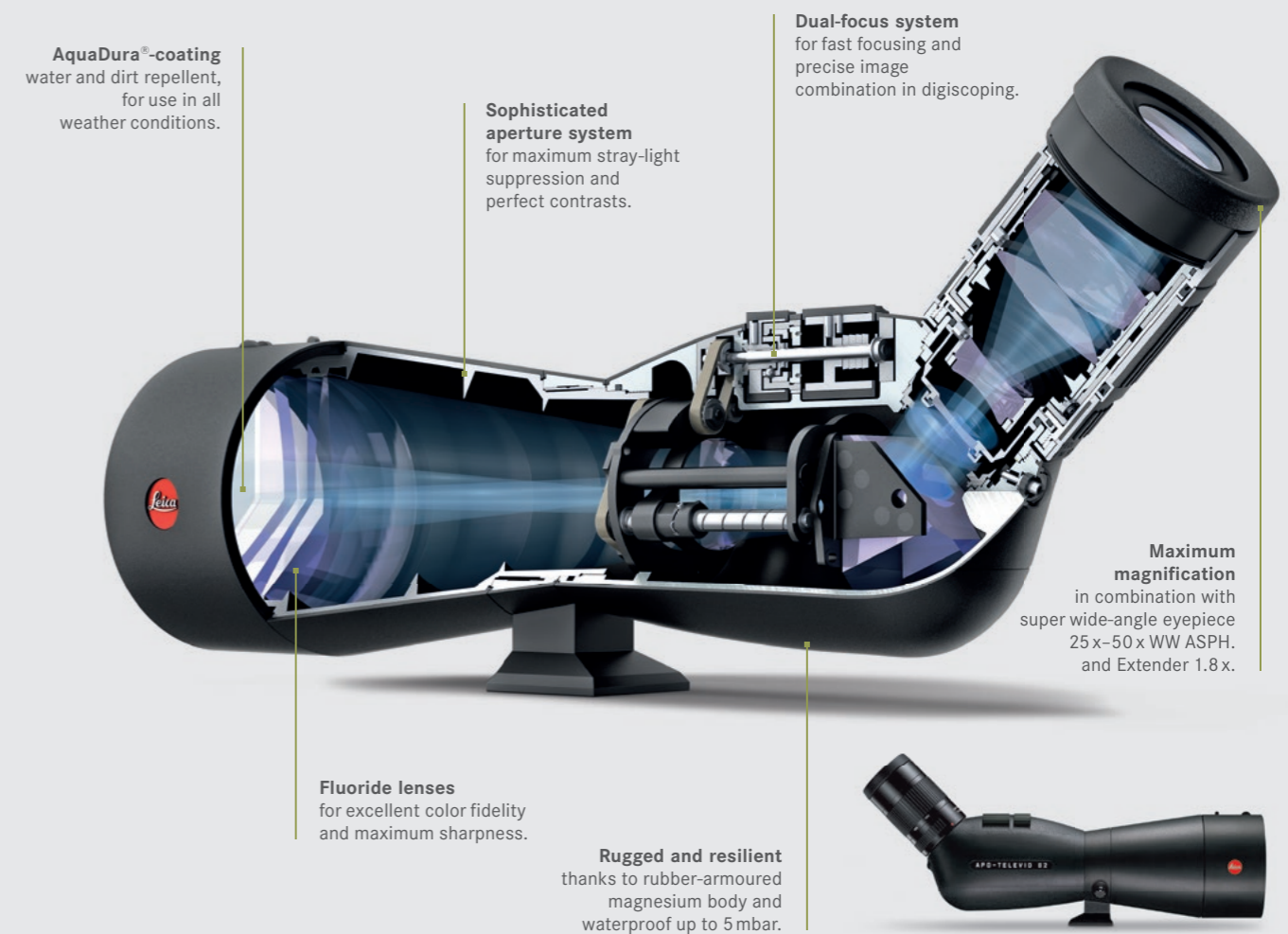
In addition, Leica is one of a few optics specialists worldwide offering perfectly matched systems: from the powerful spotting scope, to the crisp eyepiece, to the first-class camera. These products form a cohesive unit – the ideal prerequisite for high-end observing and digiscoping.

## APO-Televid spotting scopes. Bright and brilliant.

With Leica's APO-Televid spotting scopes, you'll enjoy the minutest details in razor-sharp focus. The fluoride lenses and the apochromatic system ensure highest contrasts, optimum color neutrality and minimal color fringing. These scopes offer the widest possible field of view over the entire magnification range, along with crisply detailed resolution and maximum stray-light suppression. In addition, the proven Leica dual-focus system allows two different focusing ratios: the rapid focusing required for moving objects, as well as the fine, precise focusing that digiscoping demands. Ideal for intensifying all of your viewing experiences, even those from a great distance.

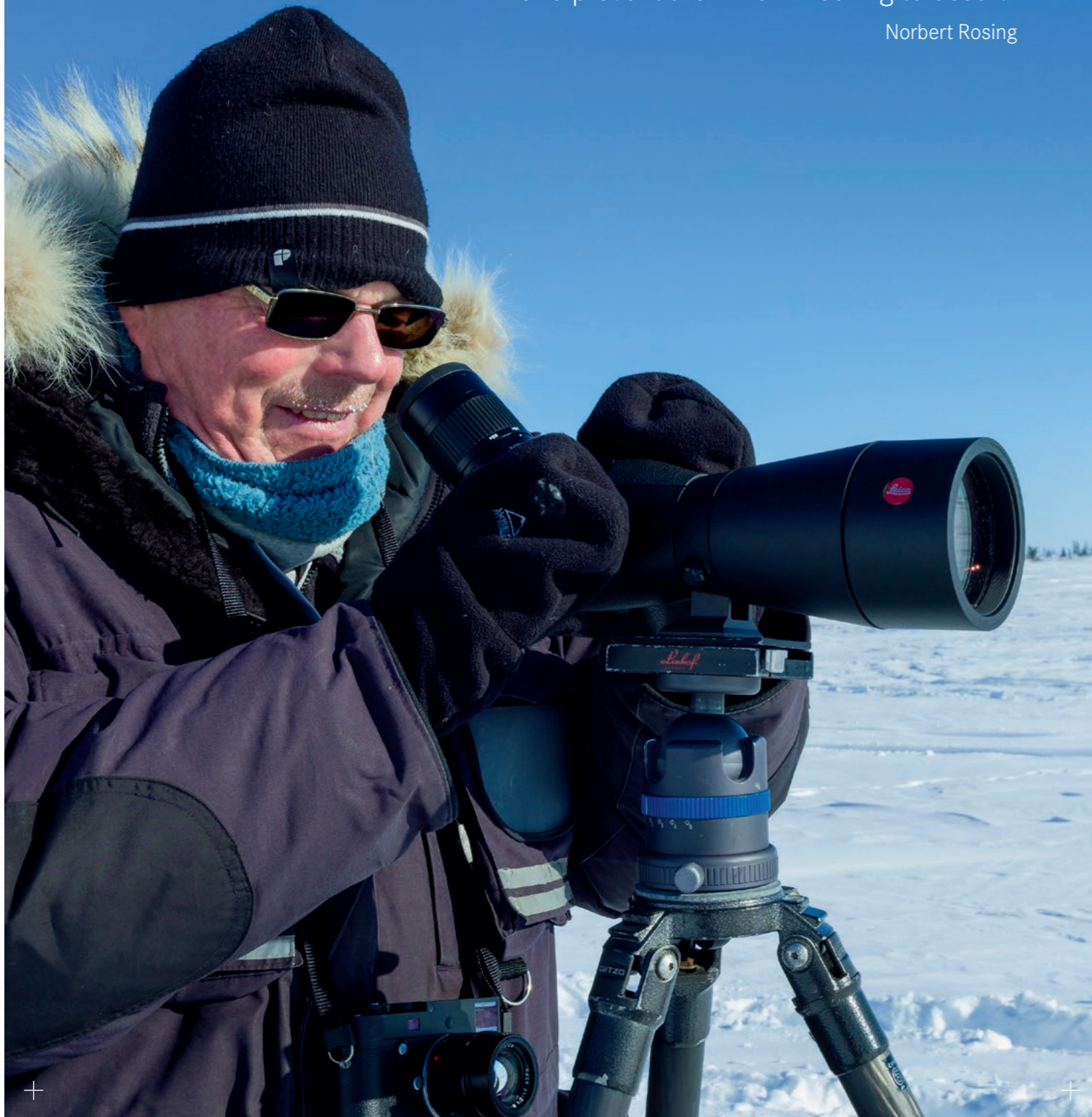
Thanks to the brilliant optics and the exquisite contrasts, even high-definition images at high magnifications are no problem. All four models feature impressively compact dimensions, logical and intuitive handling, and amazingly broad fields of view – together with the matched 25x–50x WW ASPH. eyepiece. A rubber-armored magnesium housing makes these spotting scopes extremely rugged, the dirt and water repellent AquaDura® lens coating ensures a clear view at all times, while nitrogen filling reliably prevents internal fogging.

### The inner values count. Construction of the APO-Televid 82 W.



“She began licking her cubs to keep them dry and prevent them from freezing to death.”

Norbert Rosing



**In focus: Norbert Rosing**

For over 20 years, Norbert Rosing has been traveling the world as a professional wildlife and nature photographer. His breathtaking shots of the Canadian Arctic, particularly of polar bears, have been published in many magazines. Even today, he still prefers analog photography. For many years now, he has given presentations about his journeys,

the realm of the polar bears, and life as a nature photographer. In addition, he has published numerous books, calendars and DVDs. His most recent book, *Up Here* – featuring 150 color photographs of his far-north adventures on 160 pages – has just been released.

## Norbert Rosing. On an expedition with the APO-Televid.

**Leica: Norbert, this spring, you participated in a photo expedition to Hudson Bay, in Canada. What exactly awaited you there?**

Norbert Rosing: Our task was to capture the wintry mood, the snow drifts, the timber line, the northern lights and, of course, the polar bears. At the very beginning of spring, the female polar bears emerge from the caves where they've spent the past several months. I call this the “holy grail” of wildlife photography. For the first time in their lives, the cubs experience the warmth of the sun's rays. Logistically and technically, however, these observations are a huge challenge. Everything needs to be precisely planned, prepared and coordinated. The bear dens are spread across a huge area of 7200km<sup>2</sup>. Within six weeks the female bears leave the area, this makes our clock tick very loud.

**Leica: That sounds difficult. How do you find the bears' dens in such a large area, if there are no tracks to be found?**

Norbert Rosing: We depend on the knowledge of our local guides. Everyday, whatever the weather, they take their snowmobiles out across the tundra and look for bear tracks. They look everywhere: near streams, behind trees and behind large drifts of snow. They sometimes use the Leica APO-Televid spotting scope first to scan the scene. Once they've found a family, they radio us. When we're lucky, the mother bears tolerate our presence – but at least half of them make us understand that we'd better make off into the distance.

**Leica: Listening to your story, it sounds as if you got very close to the bears. Aren't polar bears potentially aggressive, particularly mother bears with cubs?**

Norbert Rosing: That's right, and “close” is a relative term here. For these shots, we need lenses with long focal lengths, ideally 600 to 800 millimeters. I used the Leica SL with the R module system. We approach the bear families with care, keeping a distance of at least 109 yards (100 meters) – that's the “Parks Canada” rule – and we always stay near the vehicles. The guides monitor the immediate surroundings and check for polar bears that could approach us. The APO-Televid spotting scopes are ideal for observing and digiscoping over long distances. But Polar bears are true artists when it comes to blending in with the landscape. For this reason, spotting scopes and binocu-

lars must be absolutely color-neutral, and even the tiniest contrasts in the surroundings need to be noticeable. Our guides were able to recognize every movement, leaving me free to focus on photographing and filming.

**Leica: So the bear families act naturally, although humans are present?**

Norbert Rosing: Oh yes. We gathered first-hand evidence this year: We had been observing a family of bears for some time; they were quite a distance away from their cave. Suddenly a rare weather pattern surprised us and within a few minutes, the temperature had risen from -22°F to +43°F (-30°C to +6°C) and rain was pouring down. Ice covered our clothing, camera lenses, spotting scopes and binoculars, forming icicles up to 6 inches (15 cm) long. And then the mother bear did something that very few people have had the chance to see – she began licking her cubs to keep them warm and prevent them from freezing to death! If we had irritated the bear, she most probably would not have displayed this type of behavior. As we were watching, she finished her “rescue mission” and then calmly nursed her two cubs.

**Leica: Impressive! Is this still special for an experienced arctic explorer like you?**

Norbert Rosing: Absolutely! This trip was full of incredible wildlife observations and amazing northern lights. We brought many hours of 4K video material home and thousands of unforgettable images that we'll soon share with the world – through our books, presentations and brochures.



Read more about Norbert Rosing's experiences at [blog.leica-birding.com](http://blog.leica-birding.com)



# APO-Televid.

+

+

The bright front lens delivers astonishingly detailed, high-contrast images.



+

+

## Powerful and high-contrast.

Leica APO-Televid spotting scopes feature apochromatic lenses and use sophisticated fluoride glass for perfect imaging performance. What's more, the inner optics are protected by an additional, optically neutral front lens glass. In the APO Televid 82 (available in a straight or angled version), an exceptionally bright 82mm objective delivers extremely rich images. Astounding details are visible even under the most unfavorable viewing conditions. The APO-Televid is predestined for professional digiscoping – the fascinating world of wildlife can be observed in crisp quality and captured forever in detail-rich photographs. Outstanding optical performance results in natural, brilliant colors across the entire field of view. The more compact APO Televid 65 straight or angled spotting scope is the ideal companion for long, demanding treks and exhausting alpine ascents. With a short build of 11.8 in/30 cm, it weighs a mere 39.3 oz/1115 g. All APO-Televid spotting scopes are particularly rugged, as any shocks or impacts are effectively absorbed by a resistant magnesium-alloy body and rubber armoring.

### LEICA APO-Televid 82.



### LEICA APO-Televid 65.



### LEICA APO-Televid 65 W.



#### The benefits at a glance

- modern fluoride lenses for perfect color fidelity and maximum contrast
- dual-focus system for fast, precise adjustment
- rugged and quiet, thanks to rubber-armored magnesium body
- water and dirt repellent AquaDura® coating
- available as a powerful straight or angled spotting scope with bright 82 mm or compact 65 mm front lens diameters

# Eyepiece and extender.



## Outstanding field of view at all magnifications.

With the 25x–50x WW ASPH. Vario-eyepiece, you enjoy incomparable image quality across the whole field of view – without limitations and throughout the entire zoom range. And the subjective field of view is exceptionally large: up to 74° at 50x magnification.

For all Leica APO-Televid angled spotting scopes, the Leica Extender 1.8x, together with the eyepiece, enables magnifications of up to 90x. This tremendous zoom range makes wildlife, nature and astronomical observations even more enjoyable.

The bayonet connection features an integrated automatic lock, quickly and securely mounting the eyepiece and the 1.8x extender on the spotting scope. The rubber-armored function elements and the convenient twist-up eyecup ensure outstanding grip and comfort when viewing, even if you're wearing gloves.



#### Leica eyepiece 25–50x WW ASPH.

- 25x to 50x magnification
- wide-angle field of view: 41 m (25x) to 28 m (50x) at 1000 m
- edge-to-edge clarity, thanks to aspherical lenses
- waterproof to 15.5 ft/5 m
- sophisticated nitrogen filling prevents internal fogging



#### Leica Extender 1.8x

- unparalleled overview, even at 90x magnification
- high-contrast image: details can be identified even in severe heat shimmer
- helps Leica angled spotting scopes achieve 45x–90x magnification, in combination with the Leica eyepiece
- fast and secure connection between angled spotting scope and eyepiece, thanks to automatic lock at bayonet connection

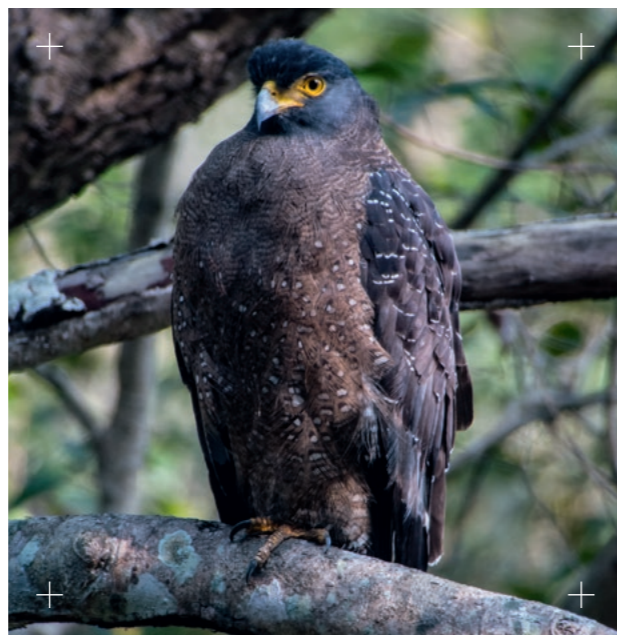
# Leica and digiscoping – an ideal combination.

Long-range optical instruments and cameras of the very highest quality – only a few manufacturers can claim to be leaders in both areas. And even fewer can look back on over 115 years of expertise in development and design. The uniquely powerful combination of Leica cameras and Leica APO-Televid spotting scopes takes digiscoping to the next level.

Superior imaging performance, perfect contrasts, true colors and ingenious mechanisms unite in Leica's perfectly matched digiscoping kit. The cameras offer unique tools for digiscoping, such as "digiscoping mode", which makes it possible to take outstanding photos quickly and easily – even for observers with little

experience. The optimum stray-light suppression of the APO-Televid spotting scopes, combined with the magnificent edge-to-edge clarity of the 25x–50x WW ASPH. eyepiece and intuitive handling, transform the spotting scopes into exceptional camera lenses with focal lengths of up to 3078 mm.

Share your best moments to social networks, or send them via e-mail or MMS. Many Leica cameras offer Wi-Fi mode and additional apps for your smartphone, letting you show images to friends and colleagues in real time.



## Digiscoping lens.

The Leica digiscoping lens (35 mm) is designed to work perfectly with the APO-Televid spotting scopes and the 25–50x WW ASPH. eyepieces. Thanks to the T2 threaded interface, almost every camera with an interchangeable lens can benefit from the extraordinary image quality offered by APO-Televid spotting scopes and eyepieces. The Leica digiscoping lens combines brilliant optical performance, sharp contrasts and top-class manufacturing using lightweight yet durable materials. In next to no time, it transforms your APO-Televid spotting scope into an ultra-powerful camera lens with focal lengths of 855 to 3078 mm.

Magnification at 25–50x WW ASPH.	25x	50x	90x
M43	1710	3420	6156
APS-C	1283	2565	4617
35 mm film equivalent*	855	1710	3078

\* Format of the Leica SL. Due to the image circle of the optical system (adapter + eyepiece + spotting scope), some vignetting appears, e.g. the format edges of the 35 mm film equivalent remain black.

## Tips: Digiscoping with a Leica.

Reduced to the essentials and built to make perfect pictures: Leica cameras also reveal their unique advantages in the field of professional digiscoping. Particularly when lighting conditions become difficult and when circumstances beyond your control present a real challenge. The premium quality Leica cameras, lenses and spotting scopes, which offer focal lengths between 800 and 3500 mm, make the real difference at moments like these.

Extremely stable tripods and tripod heads are essential when shooting with such enormous focal lengths. Tip: take your time to get it right when composing your picture. Your main subject doesn't always have to be in the middle of your picture to attract attention to it. Make good use of faster shutter speeds and try to avoid anything slower than 1/250 s. If your picture is too dark, compensate for

### Leica digiscoping lens (35 mm)

- suitable for all cameras with interchangeable lenses, thanks to T2 threading system
- intuitive operation and fast switching between observation and photography, thanks to integrated diopter compensation
- conveniently compact, it fits into every camera bag



it by changing the ISO setting on your camera. Noise-free exposures are possible at ISO 400 with the APS-C sensor used in Leica cameras; Leica cameras with full-frame sensors let you use even higher ISO values without your pictures suffering from image noise. Use the continuous shooting option for moving subjects. When using less stable tripods or panning heads, pressing the shutter release can sometimes lead to an unsharp picture – in continuous shooting mode, the second and following pictures will be sharp. Only the last picture could be unsharp again, from taking your finger off the button.

Concentrate on your picture and use an auxiliary viewfinder when your camera doesn't have an integrated finder. You won't be distracted from your subject when focusing or disturbed by reflections on the monitor screen.

# Our digiscoping system. Unique and professional.



# Leica cameras and adapters.

Leica is the European premium manufacturer to offer a complete digiscoping system from one single source – with perfectly matched components and unrivaled quality. Just like our binoculars and spotting scopes, all Leica camera models are meticulously manufactured from only the finest materials to ensure absolute reliability and enduring value. In addition to their compact form, elegant design, and intuitive handling, their optical and mechanical quality is without compromise.



## Digiscoping adapters.

ADAPTER FOR LEICA X1, X2 AND X-E (TYPE 102) CAMERAS



ADAPTER FOR LEICA Q (TYPE 116) CAMERAS



ADAPTER FOR LEICA X (TYPE 113) CAMERAS



All Leica digiscoping adapters are perfectly engineered for use with APO-Televid spotting scopes and the corresponding camera models. Their high-quality construction from only the finest, light and strong materials guarantees precise and secure mounting without unnecessarily increasing the weight of the system. They are also extremely easy to use.

## Leica cameras.



### The benefits at a glance

- brilliant optics: Leica Summilux 28 mm F1.7 ASPH. lens in combination with APO-Televid spotting scopes
- autofocus option also possible for digiscoping
- ISO maximum: 50,000
- 24 MP full-frame CMOS sensor
- built-in 3.68 MP viewfinder

Magnification at eyepiece	Total focal length (film equivalent)
25x	875
45x	1.575
50x	1.750
90x	3.150

Focal length of camera 35 mm.

### LEICA Q-System

Leica's first compact camera with a full-frame sensor and a fixed focal length, the Leica Q boasts everything you need to capture your view of the world in a perfect image. Versatile, spontaneous, powerful – even in adverse lighting conditions. The camera's fast autofocus feature enables rapid image acquisition and maintains crisp focus on moving objects when videoscoping. The high-end Leica Summilux 28 mm F1.7 ASPH. lens is equipped with a threaded ring which, in combination with the Leica digiscoping adapter for Leica Q, can be mounted directly on the eyepiece.



### Die Vorteile im Überblick

- intuitive handling and ultra-fast switching between observation and photography
- generous display and digiscoping mode: for very easy manual focusing
- Wi-Fi for direct connection to mobile devices
- for use with the digiscoping lens (35 mm) with T2 adapter for Leica L-bayonet connection

### LEICA T

Perfect contrasts and highest color neutrality enable razor-sharp images and uniquely nuanced details in every possible situation. Store your incomparable experiences and moments in extraordinary quality – using 16 GB of internal memory or an SDcard.



### The benefits at a glance

- sturdy yet flexible and easy to use
- film equivalent focal length: 35 mm; 1.5 x crop factor
- ISO maximum: 12,500
- sensor: 23.6 x 15.7 mm CMOS (APS-C format)
- self-timer: 2 sec or 10 sec delay

Magnification at eyepiece	Total focal length (film equivalent)
25x	862
45x	1.552
50x	1.725
90x	3.105

Focal length of camera 23 mm.

### LEICA SL

The Leica SL system marks the beginning of a new era of professional photography. As the first mirrorless system camera of its kind, the Leica SL offers an impressive range of innovative features and sets entirely new standards in terms of versatility and handling – and rugged resilience.

### The benefits at a glance

- intuitive operation and ultra-fast switching between observation and photography
- EyeRes viewfinder with an imperceptible latency time, for an entirely new visual experience in photography and digiscoping
- 4K video function – for all who demand the very best in videoscoping while keeping operation simple
- rugged and durable, designed to meet the special requirements of professionals and stand up to rough weather conditions while digiscoping
- for use with the digiscoping lens (35 mm) with T2 adapter for Leica L-bayonet connection



# Rangefinders.



## For over 20 years ...

... Leica has been the pioneer in rangefinding technology. Thanks to our decades of experience and comprehensive expertise – and over 300,000 laser rangefinders sold – we can proudly assert our unrivalled market leadership in the premium segment. In 2013, we revolutionized rangefinding with the Geovid HD-B 42. It offers the perfect combination of observation and rangefinding. Its innovative, patented Perger-Porro prism system gives flawless imaging performance. The bridge's ergonomic construction ensures fatigue-free viewing. A microSD card slot allows the capture of ballistics data and a multifunctional ballistic computer, air-pressure and temperature sensors ensure maximum precision.

Even the long-established Geovid HD models have undergone further development. By combining equivalent horizontal range (EHR) output with the Open Ergonomic Bridge, the new Geovid HD-R (Type 402/403/500) offers maximum safety and precision along with intuitive operation and fatigue-free handling.

With the Geovid R, Leica adds rangefinding binoculars for the premium entry-level segment to its 2016 product portfolio. This family of binoculars focuses on the most essential features – but manages to include everything a nature observer needs.

# Leica rangefinding. More precise than ever before.

## Geovid HD-B

The Geovid HD-B models are not only a unique pioneering achievement, they are a revolution in rangefinding. With the ABC® ballistics system, determining the point of impact is easier and safer than ever before. The microSD card included with your rangefinder is very simple to use, and ensures maximum precision. Based on the calculated trajectory, you can import the data via microSD card into your Geovid HD-B. After reading out the data, you can begin rangefinding right away – no further programming is required. The precise calculation evaluates all relevant ballistics information within fractions of a second and displays the holdover correction, in the desired output format, at the push of a button.

## Rangemaster models

The Rangemaster CRF models are indispensable companions, proving their strength in any terrain and in any weather. They always deliver highly precise measurements, the LED menu display is clear and well-structured so you can focus on the task at hand. Extremely lightweight and compact, you'll hardly notice carrying one of them. But thanks to the use of fluoride glass, aspherical lenses and cutting-edge coatings, they provide brilliant, clear images with fascinating detail, depth and plasticity – even over long distances.

## Inside and outside groundbreaking. Construction of the Geovid HD-B.





# Geovid HD-B.



LEICA GEOVID 8x42 HD-B

- lower magnification factor enables steady, clear observation
- generous field of view for precisely surveying large areas
- clear, bright image into the twilight hours



LEICA GEOVID 10x42 HD-B

- 10x magnification enables detailed viewing of animals
- low weight – ideal for mountains
- wide field of view: 342ft / 114m
- very compact and rugged



LEICA GEOVID 8x56 HD-B

- extraordinary light-collecting ability due to 56 mm lens
- extremely compact – not much larger than 42mm rangefinding binoculars
- high light transmission

# Geovid HD-R.



LEICA GEOVID 8x42 HD-R (Type 402)

- 8x magnification for particularly steady viewing
- very wide, generous field of view: 426ft/130m
- reliable observation and measuring, well into dusk



LEICA GEOVID 10x42 HD-R (Type 403)

- 10x magnification enables detailed viewing and identification of animals
- precise measurements, even over longer distances
- wide field of view: 342ft/114m



LEICA GEOVID 8x56 HD-R (Type 500)

- Leica's brightest rangefinding binoculars, thanks to 56 mm lens
- extremely compact, with patented Open Ergonomic Bridge

## Revolutionary in every way.

At first glance, the Geovid HD-B already sends a clear message: Innovative rangefinding meets tangible comfort. The cutting-edge technology – consisting of the superior, integrated ABC® ballistics system, as well as a microSD card in combination with a completely redesigned optics concept – outshines all previous benchmarks in the premium segment. Blunders are a thing of the past. Maximum precision is within reach today. Using the included microSD card, you can now program relevant, pre-defined ballistic data into the Geovid HD-B. Determining the point of impact is easier and more accurate than ever before.

Leica's Geovid HD-B rangefinding binoculars also feature impressive contrast and extraordinary brightness – achieved by patented Perger-Porro prisms in conjunction with the sophisticated Leica baffle system and outstanding light transmission. Thanks to its 56 mm lens, the Geovid 8x56 HD-B in particular boasts strong light collection, despite its very compact dimensions.



### The benefits at a glance

- ABC® ballistics system for maximum precision – adjustable to your specific equipment and your individual environment
- air-pressure, temperature sensors and angle of incline for increased precision
- microSD card enhances accuracy due to individualized, real ballistic data
- unique Open Ergonomic Bridge for a natural hold
- Perger-Porro prism system for an extremely bright, high-contrast image with outstanding depth and plasticity; efficient stray-light suppression eliminates reflections
- precise measurements up to 2,000 yds/1,825 m
- easy-to-read LED display with automatic brightness control
- lightweight, shock-resistant magnesium housing
- simple and convenient two-button operation, ideal ergonomic design
- water and dirt repellent AquaDura® lens coating

## For moments when precision is crucial.

The Geovid HD-R 42 and 56 (Type 402/403/500) models, like the Geovid HD-B family, combine ergonomic design and razor-sharp, high-contrast images, along with reliable ballistics.

Easy, intuitive operation is guaranteed: equivalent horizontal range (EHR) output requires no pre-programming. In steep terrain, EHR gives you greater safety and flexibility. Leica's own algorithm takes into account not only the linear distance and angle but also a realistic ballistic trajectory. The result is a highly precise calculation of the EHR at a ballistic function range of 600 yds/550 m.

Thanks to patented Perger-Porro prisms, optimized coatings and the unique Leica baffle system, third-generation Geovid HD-R models achieve excellent values in terms of contrast, transmission and stray-light suppression – for maximum performance until night sets in.



### The benefits at a glance

- Open Ergonomic Bridge for a natural hold and intuitive operation
- integrated laser rangefinder with a range of 2,000 yds/1,825 m
- output of linear distance and equivalent horizontal distance (EHR), ballistic function range is 600 yds/550 m; linear distance and EHR are displayed at the push of a button
- air-pressure and temperature sensors for increased precision
- very simple operation: no pre-setting or pre-programming necessary
- Perger-Porro prism system for an extremely bright, high-contrast image with outstanding depth and plasticity; efficient false-light suppression eliminates reflections
- secure grip thanks to non-slip rubber armoring, maximum shock resistance
- water and dirt repellent AquaDura® lens coating
- nitrogen filling prevents internal fogging
- guaranteed reliability from +131 °F to -13 °F/+55 °C to -25 °C, waterproof to 16.5 ft/5 m

# Geovid R.



LEICA GEOVID 8x42 R

- 8x magnification for particularly steady viewing
- generous field of view: 375 ft/125 m
- reliable observation and measuring, well into dusk
- lightweight and compact



LEICA GEOVID 10x42 R

- 10x magnification for reliable identification of animals
- precise measurements, even over longer distances
- convenient field of view: 331 ft/110 m
- lightweight and compact



LEICA GEOVID 8x56 R

- for longer observations
- exceptionally bright thanks to 56 mm lens, wide exit pupil
- 8x magnification for particularly steady viewing
- wide field of view: 354 ft/118 m



LEICA GEOVID 15x56 R

- 15x magnification for maximum detail recognition
- greatest magnification of all rangefinding binoculars on the market

## Reduced to maximum efficiency.

The Geovid-R models reinterpret the initial concept which has made the Geovid family so successful to the present day. Binoculars and rangefinder – united in one product. Focusing on a handful of essential features makes the glass affordable for all who haven't chosen a pair of rangefinding binoculars. And yet, the Geovid-R offers everything an observer needs!

The measurement range of 1,200 yds (1,100 m) is more than enough for every type of range measurements. The basic Equivalent Horizontal Range (EHR) ballistics function is included, giving you a significantly greater certainty of accuracy – uphill or down. Whether over longer distances or in low-light – the Geovid R models help you clearly detect and identify animals at any time. They combine optimum optics and proven laser technology with a perfected mechanics concept. It's easy to see why these are the ideal binoculars for entering the Leica Geovid world.

The Geovid-R can be operated intuitively, without any knowledge of ballistics, and offer comfortable viewing along with classic good looks. The binoculars are designed for extreme conditions, so they're always ready for action – whether for heavy-duty use or in unfavorable weather.

### The benefits at a glance

- integrated laser rangefinder with a range of 1,200 yds/1,100 m
- output of linear distance and equivalent horizontal distance (EHR), ballistic function range is 600 yds/550 m
- fast measurements
- compact, lightweight and comfortable to hold
- very simple operation: no pre-setting or pre-programming necessary
- classic design
- secure grip thanks to non-slip rubber armoring, shock-resistant aluminum housing
- nitrogen filling prevents internal fogging
- guaranteed reliability from +131 °F to -13 °F/+55 °C to -25 °C, waterproof to 16.5 ft/5 m

# Rangemaster.



## For reliable shots – uphill or down.

Small, lightweight and pocket-sized, CRF Rangemasters by Leica fit inside any pack, so they're always at hand for your observations or distance measurement.

Flexible, easy to handle, and with basic ballistics functionality – the CRF 2000-B is the best entry-level model for those who value reliable results on rough terrain.

When the animal is uphill or downhill from your position, it's essential to ensure that distance measurements are corrected accurately. The CRF 1600-R measures both, linear distance and horizontal distance. The remarkably versatile new CRF 2000-B features three modes of application, twelve ballistic curves, and three different zeroing ranges to deliver more accurate ballistics information than ever before. A single press of a button displays the distance to target and the equivalent horizontal range; the unit of measurement can be changed as easily.

Additional features include a wide field of view, allowing rapid detection even at long range, and an innovative LED display with automatic brightness control. This display is particularly helpful in difficult lighting conditions, as it provides clear information without obscuring the animals.



LEICA CRF 2000-B



LEICA CRF 1600-R

### The benefits at a glance

- absolutely precise measurements up to 1.825 m/2000 yds (CRF 2000-B) or 1.460 m/1.600 yds (CRF 1600-R) thanks to sophisticated, innovative optical and electronical concept
- extremely compact and lightweight magnesium body at only 6.6 oz/185 g
- ballistic system ABC® for highest precision – balanced to many requirements of rangefinding, uphill and downhill (CRF 2000-B)
- clear, readable LED display with automatic brightness control
- bright, crisp image, remarkable clarity of detail – even during twilight
- easy, intuitive operation over long periods, with angle-of-inclination display and yard/meter toggle
- water and dirt repellent AquaDura® lens coating

# Accessories.

## Neoprene binocular strap “Sport”

The ingeniously designed “Sport” belt allows binoculars to be carried without them swinging when walking or climbing and simultaneously offers fast access to the binoculars whenever and wherever they are needed. The binoculars are automatically drawn back into the right carrying position when not in use. The Neoprene material is soft, particularly comfortable on bare skin, and the belt can be adjusted to any suitable length.



- pitch black order no. 42 056
- chocolate brown order no. 42 057
- juicy orange order no. 42 058
- racing green order no. 42 059



## Floating carrying strap in orange

All Leica full-size binoculars are waterproof. That is why we make a floating Neoprene carrying strap to make sure they don't sink if the worst happens. Their eye-catching signal orange color offers optimum protection against complete loss in situations on or near water.



- juicy orange order no. 42 163

## “Aneas for Leica” binocular bags in a choice of two exclusive colors

The new “Aneas for Leica” binocular bags are ideal for the safe stowage and carrying of all binoculars with 42mm objective lenses. Made in France, the elegant, particularly hardwearing, and weatherproof bags in robust, finest-quality canvas are available in a choice of brown or green. The bags are produced in collaboration with “Aneas”, the French artisan workshop well known for their use of the premium materials, finest leathers, and elaborate finishing.



- brown order no. 42 060
- green order no. 42 061

## Neoprene binocular strap

Thanks to their contoured design, the Neoprene carrying straps from Leica adapt perfectly to the body and, thanks to a broad, cushioned Neoprene element, also offer superior comfort when carrying binoculars. The structured, rubber-like lining guarantees ideal grip on the shoulder and prevents binoculars slipping when walking or climbing. First-class materials and high-quality finishing make the Neoprene carrying straps particularly robust and hardwearing. As a further advantage, they guarantee almost silent use of binoculars.



- pitch black order no. 42 052
- chocolate brown order no. 42 053
- juicy orange order no. 42 054
- racing green order no. 42 055

## “Swazi for Leica” binocular beret ever-ready cover for binoculars

The extremely practical and rugged “Swazi for Leica” ever-ready cover has been created for Leica in collaboration with Swazi, the well-known outdoor equipment manufacturer from New Zealand. This rugged and weatherproof cover protects binoculars against wind, weather, moisture and dirt in any situation. The binoculars are held tight against the body by the cover when walking or climbing and are immediately ready for use when needed.



- tussock order no. 96 450

# Accessories.

## Exclusive black leathercase with red inner lining

Inside this exclusive case made of black leather with a soft lining, your Leica compact binoculars are not only safe and sound – they're very elegantly stowed. With shoulder strap.



for Ultravid BR 20/Trinovid BCA 20 order no. 42 323  
for Ultravid BR 25/Trinovid BCA 25 order no. 42 324

## Tripod adapter for binoculars

A stable platform for your Leica binoculars is particularly helpful when viewing objects at greater distances or when you wish to focus precisely on a particular scene. The Leica tripod adapter enables simple and secure attachment of your binoculars on all standard tripods.



Tripod adapter for binoculars order no. 42 220

## Balance plate

The balance plate allows APO-Televid spotting scopes to be positioned at the precise point of balance on a tripod to ensure maximum stability of digiscoping systems on any surface – settings can be made for any combination of camera, digiscoping adapter, eyepiece, and Extender 1.8 x being used.



Balance plate order no. 42 225

## Ever-ready case for APO-Televid spotting scopes

These tough and hardwearing Cordura ever-ready cases with shoulder straps not only keep your APO-Televid safe and sound; they also ensure that it is ready to use whenever you need it. Thanks to the cleverly designed closing system – with extra openings for the front lens, eyepiece, focusing barrel and tripod mount – your spotting scope doesn't need to be taken out of its case for viewing and can be slung over your shoulder while still mounted on a tripod.



for APO-Televid 65 W order no. 42 311  
for APO-Televid 65 order no. 42 312  
for APO-Televid 82 order no. 42 314

## Innovative binocular case the Leica Adventure-Strap

The Leica Adventure-Strap lets you rapidly access and safely stow any pair of full-size binoculars with a 42mm front lens diameter. Manufactured from rugged, weatherproof Neoprene, this popular carrying system offers exceptional convenience. Thanks to its ingenious design, your binoculars are carried in comfort, yet ready the second you need them – whether in mountainous terrain or on long treks.



M (for Leica Ultravid and Trinovid 42mm binoculars) order no. 42 064  
L (for all Leica full-size binoculars) order no. 42 066



# Technical data. Binoculars.

Binocular	Leica Noctivid 8 x 42	Leica Noctivid 10 x 42	Leica Ultravid 8 x 32 HD-Plus	Leica Ultravid 10 x 32 HD-Plus	Leica Ultravid 7 x 42 HD-Plus	Leica Ultravid 8 x 42 HD-Plus	Leica Ultravid 10 x 42 HD-Plus
Order no.	40 384	40 385	40 090	40 091	40 092	40 093	40 094
Package includes	contoured Neoprene carrying strap, front lens and eyepiece caps, cordura case	contoured Neoprene carrying strap, front lens and eyepiece caps, cordura case	contoured Neoprene carrying strap, front lens and eyepiece caps, cordura case	contoured Neoprene carrying strap, front lens and eyepiece caps, cordura case	contoured Neoprene carrying strap, front lens and eyepiece caps, cordura case	contoured Neoprene carrying strap, front lens and eyepiece caps, cordura case	contoured Neoprene carrying strap, front lens and eyepiece caps, cordura case
Magnification	8 x	10 x	8 x	10 x	7 x	8 x	10 x
Front lens diameter	42 mm	42 mm	32 mm	32 mm	42 mm	42 mm	42 mm
Exit pupil	5.2 mm	4.2 mm	4 mm	3.2 mm	6 mm	5.2 mm	4.2 mm
Twilight factor	18.3	20.5	16	17.9	17.1	18.3	20.5
Field of view at 1,000 yds/m	404 ft / 135 m	336 ft / 112 m	404 ft / 135 m	352 ft / 118 m	420 ft / 140 m	389 ft / 130 m	336 ft / 112 m
Eye relief	19 mm	19 mm	13.3 mm	13.2 mm	17 mm	15.5 mm	16 mm
Close focus range	approx. 6.2 ft / 1.9 m	approx. 6.2 ft / 1.9 m	approx. 7.2 ft / 2.1 m	approx. 6.6 ft / 2 m	approx. 10.8 ft / 3.3 m	approx. 9.8 ft / 3 m	approx. 9.5 ft / 2.9 m
Diopter compensation	± 4 dpt	± 4 dpt	± 4 dpt	± 4 dpt	± 4 dpt	± 4 dpt	± 4 dpt
Eyepiece for eyeglass wearers	yes	yes	yes	yes	yes	yes	yes
Eyecup with twist-and-pull action	yes, removable, with 4 click-stops	yes, removable, with 4 click-stops	yes, removable, with 4 click-stops	yes, removable, with 4 click-stops	yes, removable, with 4 click-stops	yes, removable, with 4 click-stops	yes, removable, with 4 click-stops
Adjustable interpupillary distance	56 – 74 mm	56 – 74 mm	52 – 74 mm	52 – 74 mm	55 – 75 mm	55 – 75 mm	55 – 75 mm
Focusing	internal focusing via central focusing device	internal focusing via central focusing device	internal focusing via central focusing device	internal focusing via central focusing device	internal focusing via central focusing device	internal focusing via central focusing device	internal focusing via central focusing device
Prism system	roof prism with phase-correcting coating P40 and HighLux-System HLS®	roof prism with phase-correcting coating P40 and HighLux-System HLS®	roof prism with phase-correcting coating P40 and HighLux-System HLS®	roof prism with phase-correcting coating P40 and HighLux-System HLS®	roof prism with phase-correcting coating P40 and HighLux-System HLS®	roof prism with phase-correcting coating P40 and HighLux-System HLS®	roof prism with phase-correcting coating P40 and HighLux-System HLS®
Transmission	92%	91 %	92%	92%	92%	92%	92%
Coating	HDC® multicoating, AquaDura® lens coating	HDC® multicoating, AquaDura® lens coating	HDC® Plus-multicoating and AquaDura® lens coating	HDC® Plus-multicoating and AquaDura® lens coating	HDC® Plus-multicoating and AquaDura® lens coating	HDC® Plus-multicoating and AquaDura® lens coating	HDC® Plus-multicoating and AquaDura® lens coating
Waterproof	to 16.5 ft / 5 m	to 16.5 ft / 5 m	waterproof to 16.5 ft / 5 m	waterproof to 16.5 ft / 5 m	waterproof to 16.5 ft / 5 m	waterproof to 16.5 ft / 5 m	waterproof to 16.5 ft / 5 m
Body	magnesium, nitrogen-filled	magnesium, nitrogen-filled	magnesium, nitrogen-filled	magnesium, nitrogen-filled	magnesium, nitrogen-filled	magnesium, nitrogen-filled	magnesium, nitrogen-filled
Dimensions (WxHxD)	4.9 x 5.9 x 2.3 in / 124 x 150 x 59 mm	4.9 x 5.9 x 2.3 in / 124 x 150 x 59 mm	4.57 x 4.57 x 2.2 in / 116 x 116 x 56 mm	4.57 x 4.7 x 2.2 in / 116 x 120 x 56 mm	4.7 x 5.6 x 2.7 in / 120 x 141 x 68 mm	4.8 x 5.6 x 2.6 in / 121 x 142 x 67 mm	4.7 x 5.8 x 2.7 in / 120 x 147 x 68 mm
Weight	approx. 31 oz / 860 g	approx. 31 oz / 860 g	approx. 18.9 oz / 535 g	approx. 19.9 oz / 565 g	approx. 27.2 oz / 770 g	approx. 27.9 oz / 790 g	approx. 26.5 oz / 750 g

Leica Ultravid 8 x 50 HD-Plus	Leica Ultravid 10 x 50 HD-Plus	Leica Ultravid 12 x 50 HD-Plus	Leica Ultravid 8 x 42 Blackline/ Silverline	Leica Ultravid 10 x 42 Blackline/ Silverline	Leica Ultravid 8 x 20 BR/Blackline Silverline/Colorline	Leica Ultravid 10 x 25 BR/Blackline Silverline/Colorline
40 095	40 096	40 097	40 271 (Blackline) 40 653 (Silverline)	40 272 (Blackline) 40 654 (Silverline)		
contoured Neoprene carrying strap, front lens and eyepiece caps, cordura case	contoured Neoprene carrying strap, front lens and eyepiece caps, cordura case	contoured Neoprene carrying strap, front lens and eyepiece caps, cordura case	contoured Neoprene carrying strap, front lens and eyepiece caps, cordura case	contoured Neoprene carrying strap, front lens and eyepiece caps, cordura case	woven fabric carrying strap, eyepiece caps, cordura case (BR, Silverline) leather case (Blackline)/colored cordura case (Colorline)	woven fabric carrying strap, eyepiece caps, cordura case (BR, Silverline) leather case (Blackline)/colored cordura case (Colorline)
8 x	10 x	12 x	8 x	10 x	8 x	10 x
50 mm	50 mm	50 mm	42 mm	42 mm	20 mm	25 mm
6.2 mm	5 mm	4.2 mm	5.2 mm	4.2 mm	2.5 mm	2.5 mm
20	22.4	24.5	18.3	20.5	12.7	15.8
352 ft / 117 m	352 ft / 117 m	299 ft / 100 m	130 m	112 m	341 ft / 113 m	273 ft / 90 m
17 mm	15 mm	13 mm	15.5 mm	16 mm	15 mm	15 mm
approx. 11.5 ft / 3.5 m	approx. 10.8 ft / 3.3 m	approx. 10.5 ft / 3.2 m	approx. 9.8 ft / 3 m	approx. 9.5 ft / 2.9 m	approx. 6 ft / 1.8 m	approx. 10.5 ft / 3.2 m
± 4 dpt	± 4 dpt	± 4 dpt	± 4 dpt	± 4 dpt	± 3,5 dpt	± 3,5 dpt
yes	yes	yes	yes	yes	yes	yes
yes, removable, with 4 click-stops	yes, removable, with 4 click-stops	yes, removable, with 4 click-stops	yes, removable, with 4 click-stops	yes, removable, with 4 click-stops	yes	yes
58 – 74 mm	58 – 74 mm	58 – 75 mm	55 – 75 mm	55 – 75 mm	34 – 74 mm	34 – 74 mm
internal focusing via central focusing device	internal focusing via central focusing device	internal focusing via central focusing device	internal focusing via central focusing device	internal focusing via central focusing device	internal focusing via central focusing knob	internal focusing via central focusing knob
roof prism with phase-correcting coating P40 and HighLux-System HLS®	roof prism with phase-correcting coating P40 and HighLux-System HLS®	roof prism with phase-correcting coating P40 and HighLux-System HLS®	roof prism with phase-correcting coating P40 and HighLux-System HLS®	roof prism with phase-correcting coating P40 and HighLux-System HLS®	roof prism with phase-correcting coating P40 and HighLux-System HLS®	roof prism with phase-correcting coating P40 and HighLux-System HLS®
92%	92%	92%	89%	89%	92%	92%
HDC® Plus-multicoating and AquaDura® lens coating	HDC® Plus-multicoating and AquaDura® lens coating	HDC® Plus-multicoating and AquaDura® lens coating	HDC® Plus-multicoating	HDC® Plus-multicoating	HDC® Plus-multicoating and AquaDura® lens coating	HDC® Plus-multicoating and AquaDura® lens coating
waterproof to 16.5 ft / 5 m	waterproof to 16.5 ft / 5 m	waterproof to 16.5 ft / 5 m	waterproof to 16.5 ft / 5 m	waterproof to 16.5 ft / 5 m	waterproof to 16.5 ft / 5 m	waterproof to 16.5 ft / 5 m
magnesium, nitrogen-filled	magnesium, nitrogen-filled	magnesium, nitrogen-filled	magnesium, nitrogen-filled	magnesium, nitrogen-filled	aluminum, nitrogen-filled	aluminum, nitrogen-filled
4.7 x 7.2 x 2.7 in / 120 x 182 x 68 mm	4.9 x 7 x 2.8 in / 125 x 178 x 70 mm	4.7 x 7.2 x 3 in / 120 x 182 x 78 mm	4.8 x 5.6 x 2.5 in / 121 x 141 x 63 mm	4.8 x 5.7 x 2.5 in / 121 x 146 x 63 mm	4.4 x 3.7 x 1.5 in / 111 x 93 x 39 mm	4.4 x 4.4 x 1.9 in / 111 x 112 x 39 mm
approx. 35.3 oz / 1,000 g	approx. 35.3 oz / 1,000 g	approx. 36.7 oz / 1,040 g	approx. 25 oz / 710 g	approx. 24.7 oz / 695 g	approx. 8.1 oz / 8.5 oz 230 g / 240 g	approx. 9.0 oz / 9.4 oz 255 g / 265 g

## Order no. compacts

BR	40 252	40 253
Blackline	40 263	40 264
Silverline	40 651	40 652

Colorline		
capri blue	40 625	40 631
lemon yellow	40 626	40 632
dove blue	40 627	40 633
apple green	40 628	40 634
cherry red	40 630	40 636

# Technical data. Binoculars.

Binocular	Leica Monovid 8 x 20	Leica Trinovid 8 x 42 HD	Leica Trinovid 10 x 42 HD	Leica Trinovid 8 x 20 BCA	Leica Trinovid 10 x 25 BCA
Order no.	40 390 (Blackline) 40 391 (Red) 40 605 (Silver)	40 318	40319	40 342	40 343
Package includes	close focus lens for close-up viewing, wrist strap, eyepiece cover, carrying bag with belt loop	contoured Neoprene carrying strap, front lens and eyepiece caps, Adventure-Strap	contoured Neoprene carrying strap, front lens and eyepiece caps, Adventure-Strap	carrying lanyard, cordura case with belt loop	carrying lanyard, cordura case with belt loop
Magnification	8 x	8 x	10 x	8 x	10 x
Front lens diameter	20 mm	42 mm	42 mm	20 mm	25 mm
Exit pupil	2.5 mm	5.25 mm	4.2 mm	2.5 mm	2.5 mm
Twilight factor	12.7	18.3	20.5	12.65	15.8
Field of view at 1,000 yds/m	341 ft / 110 m	378 ft / 126 m	324 ft / 108 m	341 ft / 113 m	273 ft / 90 m
Eye relief	15 mm	17 mm	15 mm	14 mm	14,6 mm
Close focus range	approx. 6 ft / 1.8 m	approx. 1.8 m	approx. 1.8 m	approx. 9.8 ft / 3 m	approx. 16.5 ft / 5 m
Diopter compensation	-	± 4 dpt	± 4 dpt	± 3,5 dpt	± 3,5 dpt
Eyepiece for eyeglass wearers	yes	yes	yes	yes	yes
Eyecup with twist-and-pull action	yes	yes, removable, with 4 click-stops	yes, removable, with 4 click-stops	yes	yes
Adjustable interpupillary distance	-	58–76 mm	58–76 mm	32–74 mm	32–74 mm
Focusing	internal focusing via central focusing device	internal focusing via central focusing device	internal focusing via central focusing device	internal focusing via central focusing device	internal focusing via central focusing device
Prism system	roof prism system	roof prism with phase-correcting coating P40 and HighLux-System HLS®	roof prism with phase-correcting coating P40 and HighLux-System HLS®	roof prism with phase-correcting coating P40 and HighLux-System HLS®	roof prism with phase-correcting coating P40 and HighLux-System HLS®
Coating	HDC® Plus-multicoating and AquaDura® coating on outer lenses	HDC® Plus-multicoating and AquaDura® coating on outer lenses	HDC® Plus-multicoating and AquaDura® coating on outer lenses	HDC® Plus-multicoating and AquaDura® coating on outer lenses	HDC® Plus-multicoating and AquaDura® coating on outer lenses
Waterproof	to 16.5 ft / 5 m	to 16.5 ft / 5 m	to 16.5 ft / 5 m	splash proof	splash proof
Body	aluminum, nitrogen-filled	aluminum, nitrogen-filled	aluminum, nitrogen-filled	aluminium	aluminium
Dimensions (WxHxD)	35.5 x 97,5 x 35,5 mm	117 x 140 x 65 mm	117 x 140 x 65 mm	3.8 x 3.6 x 1.5 in / 96 x 92 x 37 mm	4.3 x 3.6 x 1.5 in / 110 x 92 x 37 mm
Weight	4 oz / 112 g	approx. 730 g	approx. 730 g	approx. 8.3 oz / 235 g	approx. 9.0 oz / 255 g

Leica Duovid 8 + 12 x 42	Leica Duovid 10 + 15 x 50
40 400	40 420
contoured Neoprene carrying strap, front lens and eyepiece caps, nappa leather case	contoured Neoprene carrying strap, front lens and eyepiece caps, nappa leather case
8 x / 12 x	10 x / 15 x
42 mm	50 mm
5.25 mm / 3.5 mm	5 mm / 3.3 mm
18.3 / 22,5	22.5 / 27.4
351 ft / 268 ft 118 m / 90 m	274 ft / 208 ft 92 m / 70 m
14.5 mm	14.5 mm
approx. 11.5 ft / 3.5 m	approx. 12.9 ft / 3.8 m
± 3 dpt	± 3 dpt
yes	yes
yes, removable, with 2 click-stops	yes, removable, with 2 click-stops
55–74 mm	59–74 mm
internal focusing via central focusing device	internal focusing via central focusing device
roof prism with phase-correcting coating P40 and HighLux-System HLS®	roof prism with phase-correcting coating P40 and HighLux-System HLS®
HDC® multicoating	HDC® multicoating
to 16.5 ft / 5 m	to 16.5 ft / 5 m
aluminum, nitrogen-filled	aluminum, nitrogen-filled
4.7 x 6.2 x 2.6 in / 120 x 157 x 67 mm	5 x 7.7 x 2.6 in / 126 x 195 x 67 mm
approx. 37 oz / 1,045 g	approx. 44 oz / 1,250 g



# Technical data.

## APO-Televid spotting scope.

Spotting scope	Leica APO-Televid 65	Leica APO-Televid 82	Eyepiece	Leica eyepiece 25 x – 50 x WW ASPH.
Order no.: straight viewing angled viewing (45°)	40 127 40 129	40 119 40 121	Order no.:	41021
Package includes	lens and bayonet caps	lens and bayonet caps	Package includes	eyepiece, eyepiece case, bayonet and eyepiece caps
Front lens diameter	65 mm	82 mm	Exit pupil:	
Focal length	approx. 17.3 in/440 mm	approx. 17.3 in/440 mm	APO-Televid 65	2.6 mm (25 x) to 1.3 mm (50 x)
Close focus range	approx. 9.5 ft/2.9 m	approx. 9.5 ft/2.9 m	APO-Televid 82	3.3 mm (25 x) to 1.6 mm (50 x)
Exit pupil, twilight factor and field of view	please refer to eyepiece table	please refer to eyepiece table	Field of view at 1,000 yds/m	135 ft/41 m (25 x) to 92 ft/28 m (50 x)
Focusing	internal focusing with dual-focusing function	internal focusing with dual-focusing function	Subjective angle of view	57° (25 x) to 74° (50 x)
Coating	HDC® Plus-multicoating and AquaDura® coating on	HDC® Plus-multicoating and AquaDura® coating on	Focal length	17.9 – 9 mm (17.9 ± 0.15 to 9 ± 0,1)
Prism system:			Max. external diameter	2.3 in/59.5 mm
straight viewing angled viewing (45°)	Schmidt-Pechan prism system Schmidt prism	Schmidt-Pechan prism system Schmidt prism	Overall length	4.1 in/105 mm, without bayonet 3.4 in/87 mm
Waterproof	to 16.5 ft/5 m	to 16.5 ft/5 m	Weight	15.3 oz/435 g
Body	magnesium, nitrogen-filled	magnesium, nitrogen-filled	<b>Extender</b>	<b>Extender 1.8 x (with Leica APO-Televid Angle viewing Spotting scopes and Eyepiece 25 x – 50 x WW ASPH.)</b>
Eyepiece attachment	quick-release bayonet	quick-release bayonet	Order no.:	41022
Tripod mount	1/4", rotating, with locking screw	1/4", rotating, with locking screw	Package includes	eyepiece case, bayonet cap
Lens shade	retractable, with sighting aid	retractable, with sighting aid	Magnification	45–90 x
Front lens filter thread	E67	E82	Field of view at 1.094 yds/1.000 m	24 yds/21.6 m (45 x) to 15.3 yds/14 m (50 x)
Dimensions (W x H x D):			Subjective angle of view	53° (45 x) to 65° (90 x)
straight viewing	11.8 x 4.3 x 3.3 in/ 288 x 108 x 83 mm	12.3 x 4.3 x 4.0 in/ 313 x 108 x 101 mm	Exit pupil:	
angled viewing (45°)	11.9 x 4.3 x 3.3 in/ 302 x 108 x 83 mm	12.9 x 4.3 x 4.0 in/ 328 x 108 x 101 mm	APO-Televid 65	1.5 mm (45 x) to 0.73 mm (90 x)
Weight (without eyepiece):			APO-Televid 82	1.8 mm (45 x) to 0.91 mm (90 x)
straight viewing	39.4 oz/ 1,115 g	53.7 oz/ 1,520 g	Close focus range:	
angled viewing (45°)	39.6 oz/ 1,123 g	51.8 oz/ 1,469 g	APO-Televid 65	3.8 yds/3.5 m
			APO-Televid 82	4.2 yds/3.8 m
			Max. external diameter	max. 2.3 in/59.05 mm
			Overall length	1.6 in/41 mm, without bayonet 0.9 in/23 mm
			Weight	3.2 oz/92 g



# Technical data. Rangefinder.

Rangefinder	Leica Geovid 8 x 42 HD-B	Leica Geovid 10 x 42 HD-B	Leica Geovid 8 x 56 HD-B	Leica Geovid 8 x 42 HD-R (Type 402)	Leica Geovid 10 x 42 HD-R (Type 403)	Leica Geovid 8 x 56 HD-R (Type 500)
Order no.	40 047	40 049	40 051	40 052	40 054	40 053
Package includes	contoured Neoprene carrying strap, front lens caps, eyepiece caps, cordura case, battery, microSD card	contoured Neoprene carrying strap, front lens caps, eyepiece caps, battery, microSD card	contoured Neoprene carrying strap, front lens caps, eyepiece caps, battery, microSD card	contoured Neoprene carrying strap, front lens caps, eyepiece caps, cordura case, battery	contoured Neoprene carrying strap, front lens caps, eyepiece caps, cordura case, battery	contoured Neoprene carrying strap, front lens caps, eyepiece caps, cordura case, battery
Magnification	8 x	10 x	8 x	8 x	10 x	8 x
Front lens diameter	42 mm	42 mm	56 mm	42 mm	42 mm	56 mm
Exit pupil	5.2 mm	4.2 mm	6.9 mm	5.2 mm	4.2 mm	6.9 mm
Twilight factor	18.3	20.5	21.2	18.3	20.5	21.2
Field of view at 1,000 yds/m	426 ft / 130 m	374 ft / 114 m	354 ft / 118 m	426 ft / 130 m	374 ft / 114 m	354 ft / 118 m
Close focus range	16.5 ft / 5 m	16.5 ft / 5 m	19.0 ft / 5.8 m	16.5 ft / 5 m	16.5 ft / 5 m	19.0 ft / 5.8 m
Diopter compensation	± 4 dpt	± 4 dpt	± 4 dpt	± 4 dpt	± 4 dpt	± 4 dpt
Distance measurement: Range	10 yds / 10 m to approx. 2,000 yds / 1,825 m	10 yds / 10 m to approx. 2,000 yds / 1,825 m	10 yds / 10 m to approx. 2,000 yds / 1,825 m	10 yds / 10 m to approx. 2,000 yds / 1,825 m	10 yds / 10 m to approx. 2,000 yds / 1,825 m	10 yds / 10 m to approx. 2,000 yds / 1,825 m
Equivalent horizontal distance	yes, 10 m (10 yds) to 550 m (600 yds)	yes, 10 m (10 yds) to 550 m (600 yds)	yes, 10 m (10 yds) to 550 m (600 yds)	yes, 10 m (10 yds) to 550 m (600 yds)	yes, 10 m (10 yds) to 550 m (600 yds)	yes, 10 m (10 yds) to 550 m (600 yds)
Measuring accuracy	± 1 yd / 1 m to 547 yds / 500 m, ± 2 yds / 2 m to 1,094 yds / 1,000 m, ± 0.5% beyond 1,094 yds / 1,000 m	± 1 yd / 1 m to 547 yds / 500 m, ± 2 yds / 2 m to 1,094 yds / 1,000 m, ± 0.5% beyond 1,094 yds / 1,000 m	± 1 yd / 1 m to 547 yds / 500 m, ± 2 yds / 2 m to 1,094 yds / 1,000 m, ± 0.5% beyond 1,094 yds / 1,000 m	± 1 yd / 1 m to 547 yds / 500 m, ± 2 yds / 2 m to 1,094 yds / 1,000 m, ± 0.5% beyond 1,094 yds / 1,000 m	± 1 yd / 1 m to 547 yds / 500 m, ± 2 yds / 2 m to 1,094 yds / 1,000 m, ± 0.5% beyond 1,094 yds / 1,000 m	± 1 yd / 1 m to 547 yds / 500 m, ± 2 yds / 2 m to 1,094 yds / 1,000 m, ± 0.5% beyond 1,094 yds / 1,000 m
Display	LED display with 4 characters and ambient-light-controlled brightness	LED display with 4 characters and ambient-light-controlled brightness	LED display with 4 characters and ambient-light-controlled brightness	LED display with 4 characters and ambient-light-controlled brightness	LED display with 4 characters and ambient-light-controlled brightness	LED display with 4 characters and ambient-light-controlled brightness
Focusing	internal focusing with center focusing barrel	internal focusing with center focusing barrel	internal focusing with center focusing barrel	internal focusing with center focusing barrel	internal focusing with center focusing barrel	internal focusing with center focusing barrel
Prism system	Perger-Porro system	Perger-Porro system	Perger-Porro system	Perger-Porro system	Perger-Porro system	Perger-Porro system
Coating	HDC® multicoating, AquaDura® lens coating	HDC® multicoating, AquaDura® lens coating	HDC® multicoating, AquaDura® lens coating	HDC® multicoating, AquaDura® lens coating	HDC® multicoating, AquaDura® lens coating	HDC® multicoating, AquaDura® lens coating
Waterproof	to 16.5 ft / 5 m	to 16.5 ft / 5 m	to 16.5 ft / 5 m	to 16.5 ft / 5 m	to 16.5 ft / 5 m	to 16.5 ft / 5 m
Body	magnesium, nitrogen-filled	magnesium, nitrogen-filled	magnesium, nitrogen-filled	aluminum, nitrogen-filled	aluminum, nitrogen-filled	magnesium, nitrogen-filled
Dimensions (W x H x D)	4.9 x 7 x 2.8 in / 125 x 178 x 70 mm	4.9 x 6.9 x 2.8 in / 125 x 174 x 70 mm	6 x 7.4 x 3.6 in / 153 x 187 x 90 mm	4.9 x 7 x 2.8 in / 125 x 178 x 70 mm	4.9 x 7 x 2.8 in / 125 x 174 x 70 mm	6 x 7.4 x 3.6 in / 153 x 187 x 90 mm
Weight	approx. 34.3 oz / 975 g	approx. 34.5 oz / 980 g	approx. 42.5 oz / 1,205 g	approx. 34.3 oz / 975 g	approx. 33.3 oz / 980 g	approx. 42.5 oz / 1,205 g
Laser	eye-safe, FDA Class 1	eye-safe, FDA Class 1	eye-safe, FDA Class 1	eye-safe, FDA Class 1	eye-safe, FDA Class 1	eye-safe, FDA Class 1
Ballistic system	point-of-impact correction (holdover), click/MOA adjustment	point-of-impact correction (holdover), click/MOA adjustment	point-of-impact correction (holdover), click/MOA adjustment	no	no	no
Power supply	1 x 3V / CR2 lithium button cell	1 x 3V / CR2 lithium button cell	1 x 3V / CR2 lithium circular cell	1 x 3V / CR2 lithium button cell	1 x 3V / CR2 lithium button cell	1 x 3V / CR2 lithium circular cell
Battery life	approx. 2,000 measurements at 68°F / 20°C	approx. 2,000 measurements at 68°F / 20°C	approx. 2,000 measurements at 68°F / 20°C	approx. 2,000 measurements at 68°F / 20°C	approx. 2,000 measurements at 68°F / 20°C	approx. 2,000 measurements at 68°F / 20°C

Leica Geovid 8 x 42 R	Leica Geovid 10 x 42 R	Leica Geovid 8 x 56 R	Leica Geovid 15 x 56 R
40 425 (meter version) 40 426 (yard version)	40 427 (meter version) 40 428 (yard version)	40 429 (meter version) 40 430 (yard version)	40 431 (meter version) 40 432 (yard version)
contoured Neoprene carrying strap, front lens caps, eyepiece caps, battery, cordura case, battery	contoured Neoprene carrying strap, front lens caps, eyepiece caps, battery, cordura case, battery	contoured Neoprene carrying strap, front lens caps, eyepiece caps, battery, cordura case, battery	contoured Neoprene carrying strap, front lens caps, eyepiece caps, battery, cordura case, battery
8 x	10 x	8 x	15 x
42 mm	42 mm	56 mm	56 mm
5.25 mm	4.2 mm	7 mm	3.7 mm
18.3	20.5	21.2	29
375 ft / 125 m	331 ft / 110 m	354 ft / 118 m	225 ft / 75 m
18.4 ft / 5.6 m	18.4 ft / 5.6 m	18.4 ft / 5.6 m	19.4 ft / 5.9 m
± 4 dpt	± 4 dpt	± 4 dpt	± 4 dpt
10 yds / 10 m to approx. 1,200 yds / 1,100 m	10 yds / 10 m to approx. 1,200 yds / 1,100 m	10 yds / 10 m to approx. 1,200 yds / 1,100 m	10 yds / 10 m to approx. 1,200 yds / 1,100 m
yes, 10 m (10 yds) to 550 m (600 yds)	yes, 10 m (10 yds) to 550 m (600 yds)	yes, 10 m (10 yds) to 550 m (600 yds)	yes, 10 m (10 yds) to 550 m (600 yds)
± 1 yd / 1 m to 382 yds / 350 m, ± 2 yds / 2 m to 766 yds / 700 m, ± 0.5% beyond 766 yds / 700 m	± 1 yd / 1 m to 382 yds / 350 m, ± 2 yds / 2 m to 766 yds / 700 m, ± 0.5% beyond 766 yds / 700 m	± 1 yd / 1 m to 382 yds / 350 m, ± 2 yds / 2 m to 766 yds / 700 m, ± 0.5% beyond 766 yds / 700 m	± 1 yd / 1 m to 382 yds / 350 m, ± 2 yds / 2 m to 766 yds / 700 m, ± 0.5% beyond 766 yds / 700 m
LED display with 4 characters and ambient-light-controlled brightness	LED display with 4 characters and ambient-light-controlled brightness	LED display with 4 characters and ambient-light-controlled brightness	LED display with 4 characters and ambient-light-controlled brightness
internal focusing with center focusing barrel	internal focusing with center focusing barrel	internal focusing with center focusing barrel	internal focusing with center focusing barrel
roof prism with phase-correcting coating P40	roof prism with phase-correcting coating P40	roof prism with phase-correcting coating P40	roof prism with phase-correcting coating P40
HDC® multicoating	HDC® multicoating	HDC® multicoating	HDC® multicoating
to 16.5 ft / 5 m	to 16.5 ft / 5 m	to 16.5 ft / 5 m	to 16.5 ft / 5 m
aluminum, nitrogen-filled	aluminum, nitrogen-filled	aluminum, nitrogen-filled	aluminum, nitrogen-filled
4.9 x 6.8 x 2.8 in / 125 x 173 x 70 mm	4.9 x 6.6 x 2.8 in / 125 x 168 x 70 mm	5.3 x 7.2 x 2.7 in / 135 x 182 x 68 mm	5.3 x 8.3 x 2.8 in / 134 x 210 x 70 mm
approx. 33.5 oz / 950 g incl. battery	approx. 33.3 oz / 945 g incl. battery	approx. 38.8 oz / 1,100 g incl. battery	approx. 45.9 oz / 1,300 g incl. battery
eye-safe, FDA Class 1	eye-safe, FDA Class 1	eye-safe, FDA Class 1	eye-safe, FDA Class 1
no	no	no	no
1 x 3V / CR2 lithium button cell	1 x 3V / CR2 lithium button cell	1 x 3V / CR2 lithium button cell	1 x 3V / CR2 lithium button cell
approx. 2,000 measurements at 68°F / 20°C	approx. 2,000 measurements at 68°F / 20°C	approx. 2,000 measurements at 68°F / 20°C	approx. 2,000 measurements at 68°F / 20°C

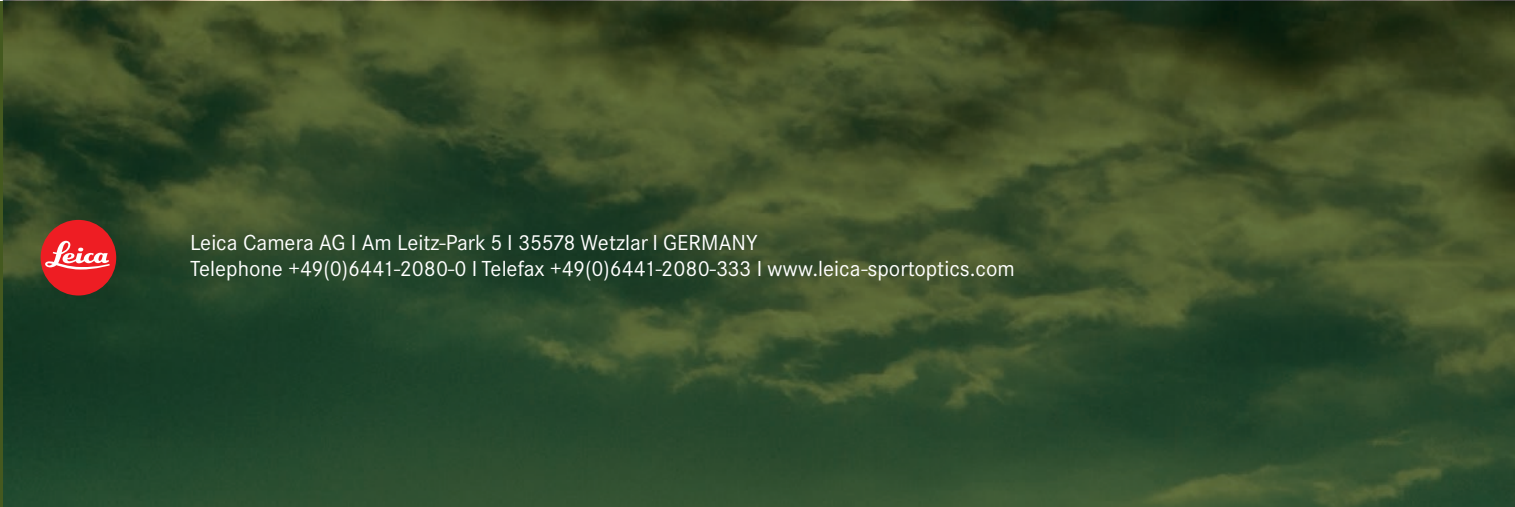
Rangefinder	Leica Rangemaster CRF 1600-R	Leica Rangemaster CRF 2000-B
Order no.	40 537	40 536
Package includes	Cordura case, carrying strap, battery	Cordura case, carrying strap, battery
Magnification	7x	7x
Front lens diameter	24 mm	24 mm
Exit pupil	3.4 mm	3.4 mm
Field of view at 1,000 yds/m	347 ft / 115 m	347 ft / 115 m
Eye relief	15 mm	15 mm
Objective angle of view	6.6°	6.6°
Diopter compensation	± 3.5 dpt	± 3.5 dpt
Distance measurement: Range	10 yds / 10 m to approx. 1,600 yds / 1,460 m	10 yds / 10 m to approx. 2,000 yds / 1,825 m
Equivalent horizontal distance	yes, 10 m (10 yds) to 1100 m (1200 yds)	yes, 10 m (10 yds) to 1100 m (1200 yds)
Measuring mode	scan mode, single measurement	scan mode, single measurement
Measuring accuracy	± 1 yd / 1 m to 400 yds / 366 m, ± 2 yds / 2 m to 800 yds / 732 m, ± 0.5% beyond 800 yds / 732 m	± 1 yd / 1 m to 410 yds / 375 m, ± 2 yds / 2 m to 820 yds / 750 m, ± 0.5% over 820 yds / 750 m
Display	LED display with 4 characters and ambient-light-controlled brightness	LED display with 4 characters and ambient-light-controlled brightness
Eyepieces for eyeglass wearers	yes	yes
Temperature display	yes	no
Barometric pressure display	yes	no
Angle of incline display	yes	yes
Coating	AquaDura®-coating on external lens	AquaDura®-coating on external lens
Waterproof	to 3.28 ft / 1 m	to 3.28 ft / 1 m
Body	carbon-reinforced plastic	carbon-reinforced plastic
Chassis	magnesium	magnesium
Dimensions (W x H x D)	4.4 x 2.9 x 1.3 in / 113 x 75 x 34 mm	4.4 x 2.9 x 1.3 in / 113 x 75 x 34 mm
Weight	approx. 6.5 oz / 185 g	approx. 6.5 oz / 185 g
Laser	eye-safe, class 1	eye-safe, class 1
Ballistic system	point-of-impact correction, click / MOA adjustment	no
Power supply	1 x 3V / CR2 lithium button cell	1 x 3V / CR2 lithium button cell
Battery life	approx. 3,000 measurements at 68°F / 20°C	approx. 3,000 measurements at 68°F / 20°C



© 2016 Leica Camera AG

We reserve the right to make modifications to the construction, features and ranges without prior notice | Materials and colors may differ from those shown in printed illustrations  
Concept and design: zoom productions GmbH, Fuschl am See | Order-no.: 25 242 German, 25 243 English, 25 244 French, 25 245 Italian  
Paper from environmentally responsible sources





Leica Camera AG | Am Leitz-Park 5 | 35578 Wetzlar | GERMANY  
Telephone +49(0)6441-2080-0 | Telefax +49(0)6441-2080-333 | [www.leica-sportoptics.com](http://www.leica-sportoptics.com)

