

expodisc[®] 2.0

Professional White Balance Filter

Instructions

► Step by step guide

White Balance

- 1. Cover the Lens.** Attach the ExpoDisc to the front of your lens (white side towards camera). If your ExpoDisc is larger than your lens filter size, simply hold the ExpoDisc flat over the lens.
- 2. Manual Camera Focus (If Necessary).** Some cameras require the lens to be in manual focus to capture an exposure through the ExpoDisc. Note: This is not necessary when using Nikon cameras to set a Preset white balance.
- 3. Set Exposure.** Camera Program or Aperture mode will automatically produce a good exposure through the ExpoDisc (when shooting in ambient light). If shooting in Manual mode (or with flash), set a proper exposure prior to setting the custom white balance.
- 4. When Using Flash.** You must set your custom white balance using the same shutter speed that you intend to use when photographing your subject. Your flash must fire when setting the custom white balance.
- 5. Aim the Camera (Measure Incident Light).** Aim the camera towards the dominant light source (just like an incident light meter). Note: The light illuminating your subject must pass through the ExpoDisc, which may require you to stand at your subject's position.
- 6. Set the Custom White Balance.** Follow your camera's custom white balance procedure to take a white balance reading.
- 7. Finished.** Remove your ExpoDisc and return your camera to autofocus, if necessary. Take a new custom white balance reading whenever your lighting changes.

ExpoDisc Videos

How to use your ExpoDisc

1. Why White Balance with ExpoDisc
2. Using the ExpoDisc to White Balance with Ambient Light
3. Using the ExpoDisc with Strobe or On-Camera Flash
4. Using the ExpoDisc to Set or Check Exposure
5. Applying White Balance in Post Production

expodisc.com

Copyright © 2016, Expomaging, Inc.

ExpoDisc

AWB



Images © APW Photography, 2013

expodisc[®] 2.0

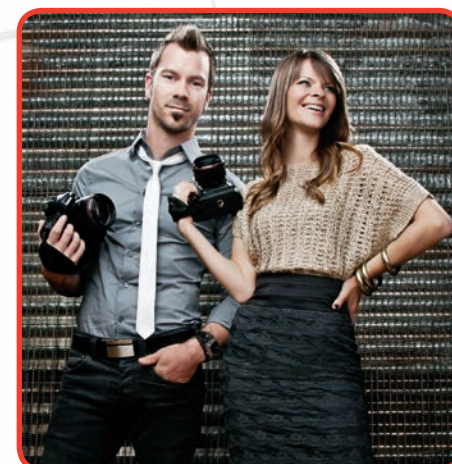
Professional White Balance Filter

Save time editing photos & video

- Set custom white balance ► Meter 18% incident exposure

ExpoDisc

AWB



ZACH & JODY



Images © Zach & Jody, 2014 • zachandjody.com

Winner 2014

**ExpoDisc 2.0, Best Product
Color Management System Category**

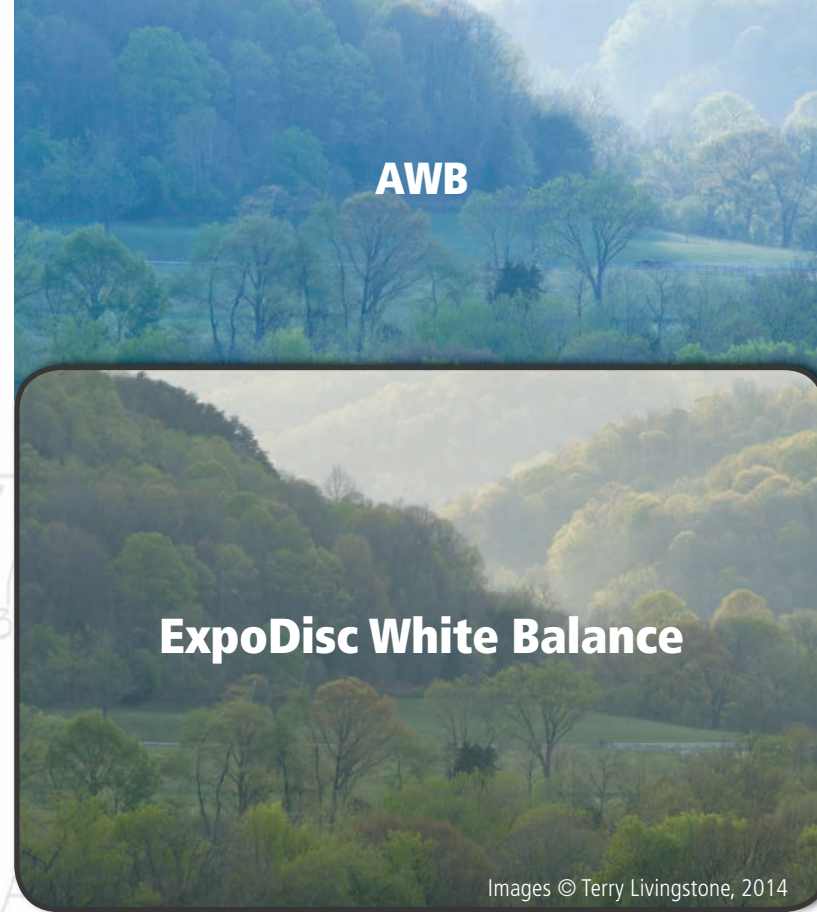
expodisc.com

Use ExpoDisc® to Save Time Editing White Balance in Photos and Video

Whether shooting in RAW or JPEG, using ExpoDisc to white balance saves valuable time editing photos and video. The ExpoDisc consistently produces excellent color in natural, artificial, studio, and mixed lighting environments.

The ExpoDisc is far easier to use than any gray card, white card or calibration target. Simply place the ExpoDisc in front of your lens and capture the incident light while setting your camera's custom white balance.

Eliminate the need for RAW or JPEG post-capture color adjustments by setting a custom white balance with an ExpoDisc.



How to Set a Custom White Balance with the ExpoDisc

To set a custom white balance, place the ExpoDisc in front of your lens and follow your camera's custom white balance procedure to capture an incident light reading through it. Aim the camera towards the dominant light source (just like an incident light meter). For most cameras, this procedure takes less than 15 seconds.

That's it. If you're shooting JPEG you're done. If you're shooting RAW, simply download your images "as shot" to save yourself valuable time correcting color. No special software, and no post-processing required.



ExpoDisc attached to lens

Larger ExpoDisc Sizes Can Be Used with Smaller Lenses

As with the original ExpoDisc, a larger ExpoDisc can be used with smaller filter size lenses by simply holding the ExpoDisc flat against the lens during the white balance procedure.

ExpoDisc over smaller lens ▶



ExpoDisc 2.0 Includes New Portrait Warming Filters (Gels)

ExpoDisc 2.0 includes two levels of custom warming filters (gels) which can be inserted into recesses on the face of the ExpoDisc, allowing photographers to add varying degrees of warmth for pleasing skin tones. Under daylight balanced studio lights, the +1 and +2 custom warming filters provide 250° and 400° Kelvin warming, respectively.

Portrait Warming Filters



Easy filter attachment



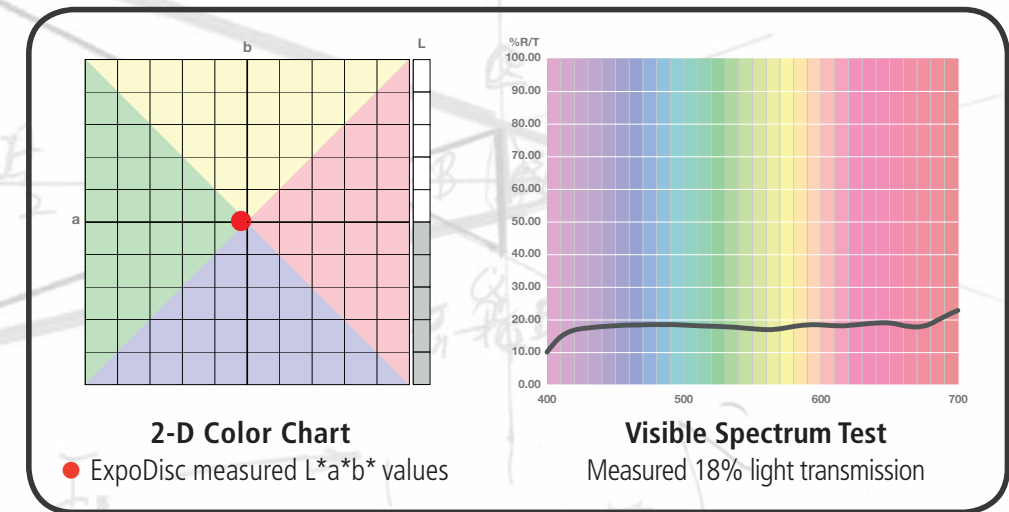
Meter for 18% Incident Exposure with the ExpoDisc

The ExpoDisc is not just for white balance. The precision calibration and uniformity of the ExpoDisc means that it can also be used to meter for an 18% incident exposure.

To meter for an 18% exposure, stand at the subject's position and aim the camera back toward your intended shooting position. Use the camera's meter as seen through the viewfinder to adjust the aperture, shutter speed, or ISO until a proper exposure is indicated. It's also possible to make exposure adjustments based upon the position of the histogram spike on an ExpoDisc test shot. Simply adjust the aperture, shutter speed, or ISO until the spike is centered.

ExpoDisc is Hand Calibrated in the USA

ExpoDisc is tested by hand on a transmission spectrophotometer and individually adjusted using custom formulated materials to ensure an 18% total light transmission across the visible spectrum. This neutrality is important because using a non-neutral tool for white balance can actually add undesirable color casts to images. Each ExpoDisc 2.0 includes a quality control card to certify its neutrality.



Online Support: www.expodisc.com/support

Please visit our website to view tutorial videos, read FAQs, or to download written instructions about the ExpoDisc and custom white balance.

www.expodisc.com

