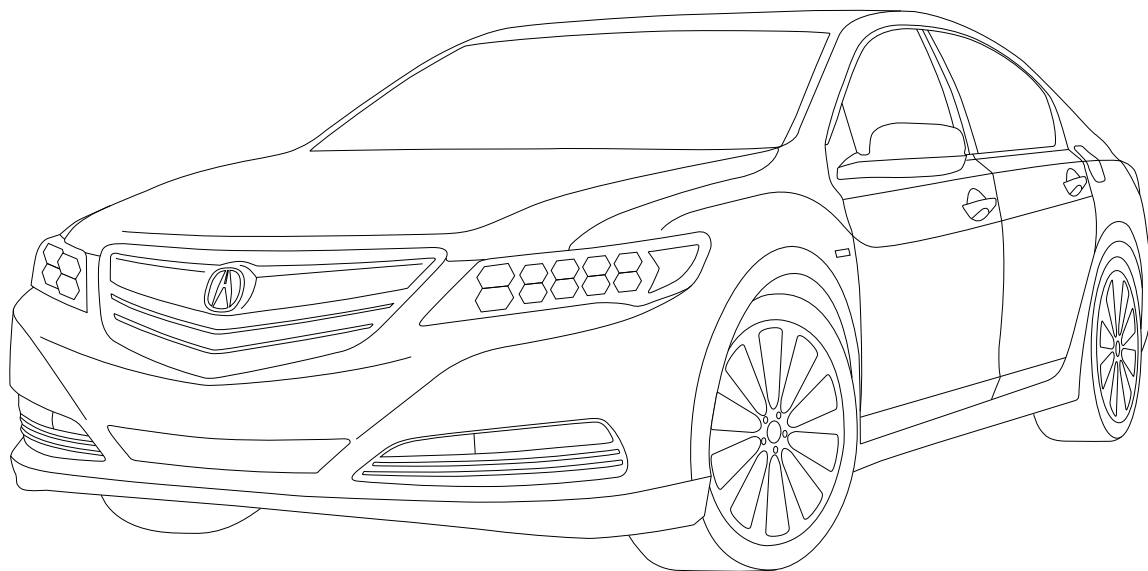


2016

RLX SPORT
HYBRID



2016 RLX SPORT
HYBRID





The 2016 RLX Sport Hybrid is the standard bearer of luxury and performance in the Acura portfolio. Our simple goal is to stir the driver in you, providing exceptional power and agile handling, while never losing track of our focus on visionary innovation and fuel efficiency.

THE ACURA OF HYBRIDS



RLX SPORT HYBRID
SUPER HANDLING ALL-WHEEL DRIVE™§

A POWERFUL CONTRADICTION

The Direct-Injected i-VTEC® V6 engine and three electric motors are designed to achieve staggering power and performance without sacrificing fuel efficiency. A combined 377 horsepower† is managed by the first Acura-designed 7-speed dual-clutch transmission and a one-touch Electronic Gear Selector that engages the vehicle's computer to sense gear requirements intuitively. In the corners, it's like nothing you've ever driven. Acura's revolutionary Super Handling All-Wheel Drive™§ system is coupled to a hybrid-electric Twin Motor Unit (TMU).

This set-up is engineered to dynamically distribute torque to each of the rear wheels, producing "on rails" handling at the will of the driver.

REACTIVE FORCE PEDAL

The RLX Sport Hybrid is engineered to dynamically vary accelerator stiffness to assist the driver in applying optimum engine power in virtually any driving condition to benefit fuel economy and help maintain traction.

VARIABLE CYLINDER MANAGEMENT®

Variable Cylinder Management is designed to help the RLX increase its fuel efficiency by automatically changing the V6 engine to run on six or three cylinders, depending on driving conditions. The cylinder activation is seamless and not felt by driver or passengers. The fuel consumption ratings of as little as 7.5 litres/100 km† on the highway however, are something you're sure to notice.

§None of the features we describe are intended to replace the driver's responsibility to exercise due care while driving. Drivers should not use handheld devices or operate certain vehicle features unless it is safe and legal to do so. Some features have technological limitations. For additional feature information, limitations and restrictions, please visit www.acura.ca/disclaimers and refer to the vehicle's owner's manual.

†Horsepower and torque calculations reflect SAE net, Rev. 08/04, SAE J1349 procedures.

‡Estimated fuel economy based on Government of Canada's 5-cycle testing method. Your actual fuel consumption will vary based on driving habits and other factors – use for comparison only. For more information on 5-cycle testing, visit <http://vehicles.nrcan.gc.ca>.





PERFORMANCE

HANDLING MEETS HIGHER LEARNING

377
— HORSEPOWER —

7
— SPEED —
DUAL-CLUTCH

3.5
— LITRE —
i-VTEC
V6 ENGINE

7-SPEED DUAL-CLUTCH TRANSMISSION

On the receiving end of Acura's one-touch gear selector is an equally responsive 7-speed dual-clutch transmission (DCT). Unlike a conventional transmission, the DCT offers ultra-quick gear changes. Drivers choose between fully automatic and Sport modes, or the thrill of shifting manually via race-inspired paddle shifters that are intuitively mounted behind the steering wheel.

SHARPENED AGILITY BY DESIGN

The RLX Sport Hybrid's revolutionary powertrain uses three separate electric motors to help achieve the power of a conventional V8 engine with 4-cylinder-like fuel economy.

Unlike most hybrids, the RLX Sport Hybrid retains performance mettle; a combined 341 lb.-ft of torque at 4,700 rpm[†] thanks to its 3.5-litre, 24-valve Direct-Injected i-VTEC[®] engine.

A powerful front electric motor supplies astounding torque during hard acceleration and is designed to improve fuel efficiency at low cruising speeds.

Independent electric motors at the rear wheels provide power for standing starts, low-speed cruising and rolling acceleration, as well as harness torque for remarkable cornering.

AGILE HANDLING ASSIST

Linear and precise, Agile Handling Assist[§] not only complements the SH-AWD^{™§} system to help improve cornering ability, but it also pays further dividends by smoothing ride quality and making the tactile response of accelerating more pleasurable.

§None of the features we describe are intended to replace the driver's responsibility to exercise due care while driving. Drivers should not use handheld devices or operate certain vehicle features unless it is safe and legal to do so. Some features have technological limitations. For additional feature information, limitations and restrictions, please visit www.acura.ca/disclaimers and refer to the vehicle's owner's manual.

†Horsepower and torque calculations reflect SAE net, Rev. 08/04, SAE J1349 procedures.





EXTERIOR

VISIONARY STATEMENT

JEWEL EYE™ LED HEADLIGHTS—LEADING THE WAY
Acura's signature Jewel Eye LED headlights present a dual-stacked array with a total of eight separate high-intensity LED lamps and utilize ultra-reflective optical lenses to provide powerful, down-the-road illumination. Even when they are not illuminated, Acura Jewel Eye LED headlights give the RLX a sophisticated, gem-like appearance.

LED TAILLIGHTS

Rear LED lighting further ensures crystal clear nighttime visibility and provides a striking exterior look.

UNMISTAKABLE PRESENCE

The RLX Sport Hybrid leads the way with 19" wheels and a dark chrome grille. It leaves a bold impression with sculpted lines and an athletic stance, complete with a unique SH-AWD badge.



Elite model shown.

INTERIOR

GRACIOUS HOST

Intelligent design has graced the Acura RLX with a spacious, comfortable and balanced cabin typically associated with a much larger luxury sedan. Luxurious finishes in the form of soft, Milano leather-trimmed seating surfaces and chestnut wood grain accents complete the cabin's welcoming aura.

12-WAY POWERED AND HEATED SEATING

Finding the ideal driving position is easy with the standard heated and 12-way power adjustable front seats, including 4-way power lumbar support and programmable driver recognition memory. Ventilated front seats are available for heating and cooling on the RLX Elite. An additional measure of comfort on the RLX comes from the heated rear seats.

HEATED STEERING WHEEL

No less enticing is the heated, leather-wrapped steering wheel for those cold winter morning drives.

ACTIVE NOISE CANCELLATION (ANC)

Discreet microphones inside the RLX cabin monitor low-frequency noise and, when detected, the Active Noise Cancellation system counteracts and cancels the disturbance with an equivalent waveform using the sound system. Acoustic glass further cocoons cabin occupants from auditory intrusion.

ACTIVE SOUND CONTROL (ASC)

Operating in unison with the Active Noise Cancellation system, Active Sound Control uses in-cabin microphones and complex electronic sensors to mitigate noise created by the engine as it goes through its rpm cycle.

TRUNK CAPACITY

Trunk space is generous with a cargo volume of 328 litres. Two sets of clubs are typically easily accommodated—and the aperture is large enough to help make stowing and retrieving heftier items less of a burden. Keyless access to the trunk compartment is, of course, standard across the trim range.

TECHNOLOGY

TECHNOLOGICAL PACE CAR

KRELL AUDIO

The RLX Elite trim level offers the only in-car audio system designed and built by legendary Krell Industries. Audiophiles already know Krell for its fundamental research into amplifier design and performance. Every Krell component used in the RLX upholds their legacy, including an incredible 14-speaker array that delivers premium fidelity from a CD/AM/FM/SiriusXM™[†] tuner, MP3/Windows Media® Audio compatibility, auxiliary input jack, USB device connector* and more—a direct result of Krell's discoveries in audio amplification. Unprecedented linearity and accuracy are the result.

[†]Only available in certain areas. Includes a no-charge trial of three months.

*Only compatible with certain devices and operating systems. Cellular data and/or voice charges may apply, including roaming charges and/or other amounts charged by your wireless carrier.

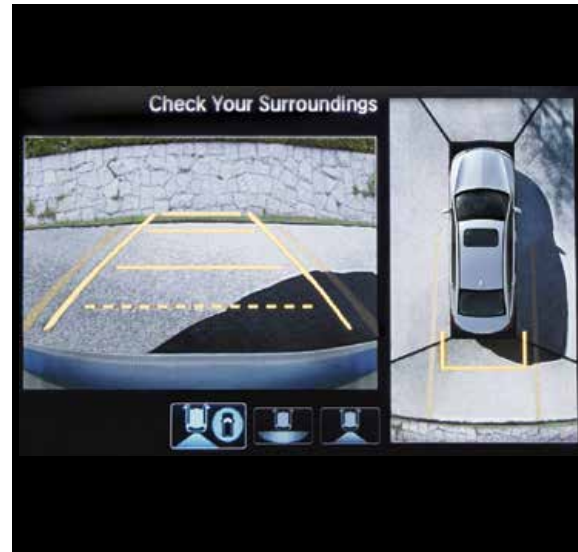
AVAILABLE SURROUND VIEW CAMERA SYSTEM[§]

Visibility is taken to a new level using four separate cameras that can be viewed independently or combined to create a composite "bird's-eye," ground view.

[§]None of the features we describe are intended to replace the driver's responsibility to exercise due care while driving. Drivers should not use handheld devices or operate certain vehicle features unless it is safe and legal to do so. Some features have technological limitations. For additional feature information, limitations and restrictions, please visit www.acura.ca/disclaimers and refer to the vehicle's owner's manual.

HEAD-UP DISPLAY

At-a-glance access to key driver inputs projected in sharp, crisp, full colour on the windshield. Display modes include Sport Hybrid system operation, turn-by-turn navigation, speedometer and compass, as well as alerts from various driver-assist systems.



ACURALINK™†,‡

A NEW BAR FOR CONNECTIVITY

NAVIGATION

AcuraLink brings some impressive additions to your Acura Navigation System^{†,††} like Real-Time Traffic^{***} with surface street traffic information and bilingual voice recognition software. You'll also be able to request points of interest via a live concierge agent and have the route sent directly to your navigation screen. Or map locations yourself and upload them to your screen via the MyAcura website, or AcuraLink Connect app.[‡]

REMOTE CONTROL

With the AcuraLink^{†,‡} Connect app, or MyAcura website, you no longer need to be in your RLX to connect with it. Using your web-enabled device, you can remotely lock and unlock doors; use the car finder feature in a crowded lot; even check things such as fuel level, tire pressure and odometer reading from your virtual dashboard. And the connection goes both ways as your RLX can send messages to you via the mobile app, alerting you of an alarm notification for example, even if you're out of town.

An On-Demand Multi-Use Display[™] touchscreen and one-touch dedicated Link and Assist buttons in the vehicle easily give you access to an array of customizable media, convenience features, emergency services and even 24-hour live concierge operators. The AcuraLink^{†,‡} Connect app and MyAcura website allow you to connect remotely with your RLX in ways like never before.

EMERGENCY

In the event of an airbag deployment, AcuraLink^{†,‡} is engineered to automatically send a signal for assistance to your location.[‡] The on-board one-touch Assist button also gives you access to live operator assistance in the case of non-collision emergencies.

MAINTENANCE

Not only will you be notified when your next service is due via the Maintenance Minder,[™] but the Automated Appointments[™] feature allows you to schedule an appointment with your favourite, or local, Acura dealer directly through the AcuraLink^{†,‡} system.

LIVE CONCIERGE

The AcuraLink^{†,‡} Premium package gives you access to the most personalized feature of all—access to live concierge agents. One touch puts you in direct voice contact with an Acura concierge who will assist you with virtually anything from finding a point of interest; booking dinner, hotel, or flight reservations; even searching the web for answers while you drive.

[†]None of the features we describe are intended to replace the driver's responsibility to exercise due care while driving. Drivers should not use handheld devices or operate certain vehicle features unless it is safe and legal to do so. Some features have technological limitations. For additional feature information, limitations and restrictions, please visit www.acura.ca/disclaimers and refer to the vehicle's owner's manual.

^{††}Map database covers major metropolitan areas in Canada and 48 contiguous U.S. states.

*Only compatible with certain devices and operating systems. Cellular data and/or voice charges may apply, including roaming charges and/or other amounts charged by your wireless carrier. Subscription required. One year complimentary subscription to AcuraLink Standard, AcuraLink Connect, and AcuraLink Premium included, after which fees, taxes and other charges will apply in order to continue subscription. Ask your dealer for full terms and conditions.

**Real-Time Traffic[™] is only available in 13 of Canada's largest metropolitan areas and is dependent upon data location reporting of connected vehicles.

[‡]Vehicle or the compatible smartphone tethered via the vehicle's HandsFreeLink Bluetooth connection needs to have cellular reception.





AUTOMOBILE JOURNALISTS
ASSOCIATION OF CANADA

2015 BEST
NEW SAFETY TECHNOLOGY
ACURAWATCH™
DRIVER ASSIST FEATURES



(((ACURAWATCH™)))

ALL EYES ON DECK

ADAPTIVE CRUISE CONTROL (ACC) WITH LOW-SPEED FOLLOW[§]

The RLX has taken the conventional cruise control system and enhanced its benefits for the driver. Using an advanced radar system hidden discretely behind the front grille, the Adaptive Cruise Control with Low-Speed Follow system is engineered to allow the RLX to independently follow the car in front at a set distance, starting and stopping appropriately with the flow of traffic.

FORWARD COLLISION WARNING (FCW) SYSTEM[§]

The Forward Collision Warning system uses an onboard camera that is designed to monitor the gap between you and the car in front of you. If that gap begins to close too quickly, the system is designed to use both audible and visual warnings to inform you to reduce your speed.

COLLISION MITIGATION BRAKING SYSTEM™ (CMBS)[§]

Innovation that's designed to allow the RLX to react, even when you don't. The CMBS uses a radar transmitter to determine the distance and closing speed of the car directly in front of you and is designed to react accordingly when a programmed threshold is exceeded. Initially, the system warns you with audio

and visual alerts. If speed is not reduced, the system is engineered to gently pull your seat belt and automatically begin light braking. If the system still determines an impact is unavoidable, it is designed to automatically apply strong braking to help reduce speed and mitigate the force of the collision.

BLIND SPOT INFORMATION (BSI) SYSTEM[§]

The RLX expands your field of vision by providing certain information about vehicles that are in, or about to enter your blind spot when you're passing, being passed, merging or changing lanes. When the system detects vehicles approaching from behind in adjacent lanes, it is designed to trigger the appropriate indicator, providing assistance when you change lanes.

LANE DEPARTURE WARNING (LDW) SYSTEM[§]

Should the RLX begin to drift out of its lane without a turning signal being applied, the Lane Departure Warning system is designed to trigger both an audible and visual warning to alert the driver. This connection between car and road is achieved through an onboard camera that is designed to monitor the vehicle's lane position at all times.

LANE KEEPING ASSIST SYSTEM (LKAS)[§] AND ROAD DEPARTURE MITIGATION (RDM) SYSTEM[§]

Road Departure Mitigation works with the Acura Lane Keeping Assist System to help keep the vehicle inside the lane and on the road during normal driving conditions. If the car begins to cross lane markings unintentionally, it's engineered to apply light steering torque to return the vehicle to the centre of the lane while a continuous beep alerts the driver.

§ None of the features we describe are intended to replace the driver's responsibility to exercise due care while driving. Drivers should not use handheld devices or operate certain vehicle features unless it is safe and legal to do so. Some features have technological limitations. For additional feature information, limitations and restrictions, please visit www.acura.ca/disclaimers and refer to the vehicle's owner's manual.



SOLID ON SAFETY

At Acura, we strive to provide a high level of standard safety features to help ensure the safety of occupants, other drivers and even pedestrians. This added peace of mind helps our drivers maintain the confidence needed to enjoy every road to the fullest.

ACE™ BODY STRUCTURE

The innovative Advanced Compatibility Engineering™ (ACE) body structure utilizes a high-tensile, high-efficiency steel body structure and is engineered to help provide enhanced protection from a multi-directional collision. ACE is designed to reduce the force of a frontal impact by absorbing energy over a large area and dispersing it away from you and other occupants of the cabin. ACE is also designed to help reduce occupant injuries caused by misalignment in collisions between vehicles of different sizes.

VEHICLE STABILITY ASSIST (VSA®)§

VSA with Traction Control automatically detects and corrects understeer or oversteer situations, sometimes before you're aware there's a problem. The system is designed to intuitively analyze conditions and reduce throttle and/or apply braking to individual wheels. Should a loss of traction occur on a slippery surface, Traction Control is designed to help ensure you get underway safely.

ANTI-LOCK BRAKES

The 4-wheel Anti-lock Braking System® (ABS) is designed to help you maintain steering control when braking hard on wet, slippery or loose surfaces, while Electronic Brake-force Distribution and Brake Assist are designed to balance braking forces at each wheel to help compensate for cargo and passenger weight distribution inside the cabin.

TIRE PRESSURE MONITORING SYSTEM (TPMS)†

To enhance your peace of mind, this system is engineered to continually monitor each tire and display the precise pressure of each individual tire in the instrument panel. If a tire loses pressure, a warning appears, indicating the specific tire that requires attention.

AIRBAGS

A significant level of safety is achieved with seven standard airbags. The cabin of the RLX features side curtain airbags with a sensor designed to deploy in the event of a rollover and dual-stage, multiple-threshold front airbags (SRS). Plus, it has Smartvent™ side airbags, which are designed to deploy in a manner that mitigates the risk of injury to out-of-position or smaller occupants as well as a driver's side knee airbag.

§None of the features we describe are intended to replace the driver's responsibility to exercise due care while driving. Drivers should not use handheld devices or operate certain vehicle features unless it is safe and legal to do so. Some features have technological limitations. For additional feature information, limitations and restrictions, please visit www.acura.ca/disclaimers and refer to the vehicle's owner's manual.

†For optimal tire wear and performance, the pressure should be checked regularly with a tire gauge. Do not rely solely on the monitor system.



ENGINE	
Engine	3.5-litre, 24-valve, Direct Injection SOHC, i-VTEC® aluminum-alloy V6
3-motor hybrid powertrain: Front electric motor and rear twin motor unit	
Horsepower	310 hp @ 6500 rpm
Torque	273 lb.-ft. @ 4700 rpm
Total combined Hybrid horsepower	377 hp
Total combined Hybrid torque	341 lb.-ft.
Displacement	3471 cc
Bore and stroke	89 x 93 mm
Emissions	Tier 2 Bin 3
Active Control Engine Mount (ACM) system	
Idle-stop	
Compression ratio	11.5:1
Variable Cylinder Management® (VCM®)	
Recommended fuel	Premium unleaded
Horsepower and torque calculations reflect SAE net, Rev. 08/04, SAE J1349 procedures.	

DRIVETRAIN	
7-speed dual-clutch transmission with Sequential SportShift® paddle shifters, Grade Logic Control and Sport mode	
Drive-by-Wire Throttle System™	
Electronic gear selector	
Reactive force pedal	

SAFETY FEATURES	
Adaptive Cruise Control (ACC) with Low-Speed Follow [§]	
Advanced Compatibility Engineering™ (ACE™) body structure	
Anti-lock Braking System [§] (ABS) with Electronic Brake-force Distribution (EBD) and Brake Assist	
Blind Spot Information (BSI) system [§]	
Collision Mitigation Braking System™ [§] (CMBS®)	
Cross Traffic Monitor system [§]	
Driver's side knee airbag	
Dual-stage, multiple-threshold front airbags (SRS)	
Smartvent™ side airbags	
Side curtain airbags	
Forward Collision Warning (FCW) system [§]	
Immobilizer Theft-Deterrent System	
Lane Departure Warning (LDW) system [§]	
Lane Keeping Assist System [§] (LKAS)	
Lower Anchors and Tethers for Children (LATCH)	
Road Departure Mitigation (RDM) system [§]	
Security system	
Tire repair kit	
Tire Pressure Monitoring System [†] (TPMS) with location and pressure indicators	
Vehicle Stability Assist [§] (VSA®) with Traction Control	

CAPACITIES	
Cargo volume	328 litres
Fuel tank capacity	57 litres
Passenger volume	2891 litres

FUEL ECONOMY	
City/Hwy/Combined	8.0/7.5/7.7 litres/100 km*

CHASSIS	
19" alloy wheels	
Agile Handling Assist [§]	
Amplitude Reactive Dampers	
Double-wishbone, lower double-joint front suspension	
Multi-link rear suspension	
Front and rear stabilizer bars	
Power-assisted, solid rear disc brakes	
Power-assisted, ventilated front disc brakes	
Sport Hybrid Super Handling All-Wheel Drive™ [§] (SH-AWD®)	
Tires: P245/40 R19 98W	
Electric power-assisted rack-and-pinion steering (EPS)	

SEATING & TRIM	
12-way power adjustable driver's and front passenger's seat including 4-way power lumbar support	
Driver's seat memory settings	
Heated front seats	
Heated rear seats	
Leather-wrapped steering wheel and shift knob	
Milano leather-trimmed interior	
Woodgrain interior trim	

EXTERIOR	
Dark chrome-plated grille	
Front splash guards	
Heated power-adjusting, power-folding side mirrors with driver recognition, reverse gear tilt-down, integrated turn indicators and expanded view driver's mirror	
Headlamp washers	
Jewel Eye™ LED headlights	
LED fog lights	
LED taillights	
Power moonroof with tilt feature, auto-open/close, auto-reverse, key-off operation and sliding shade	
Rain-sensing windshield wipers	

EXTERIOR DIMENSIONS	
Curb weight (Technology/Elite)	1960/1980 kg
Gross vehicle weight rating	2440 kg
Ground clearance – full-load	96 mm
Height	1465 mm
Length	4982 mm
Steering ratio	13.94
Steering turns lock-to-lock	2.575
Track – front/rear	1632/1630 mm
Turning radius, curb to curb	12.3 m
Wheelbase	2850 mm
Width (excluding sideview mirrors)	1890 mm

INTERIOR DIMENSIONS	
Headroom – front/rear	954/937 mm
Hip room – front/rear	1419/1385 mm
Legroom – front/rear	1074/985 mm
Shoulder room – front/rear	1514/1449 mm
Seating capacity	5

COMFORT & CONVENIENCE	
Acoustic glass	
Acura Navigation System with Voice Recognition™ ^{§,††} and 8" display	
AcuraLink™ ^{§,††,‡} connectivity system	
Active Noise Cancellation (ANC)/Active Sound Control (ASC)	
Ambient cabin and door handle lighting	
Ambient driver's and front passenger's footwell lighting	
Auto-dimming rearview mirror	
Automatic climate control system	
Capless fueling system	
Colour TFT Multi-Information Display (MID)	
Driver's and front passenger's seatback pockets	
Electronic Parking Brake (EPB) with automatic brake hold	
Electronically-locking glove compartment	
HandsFreeLink™-Bluetooth® wireless mobile phone interface ^{§,††} with steering wheel-mounted controls	
Head-up display	
Heated steering wheel	
HomeLink® remote system***	
Keyless Access System	
Multi-angle rearview camera [§] with dynamic guidelines	
On-Demand Multi-Use Display™	
One-touch directional signals	
Power tilt and telescoping steering column	
Power windows with driver's and front passenger's auto-up/down, auto-reverse and key-off operation	
Pushbutton start	
Rear-seat centre armrest	
Remote engine starter	
Steering wheel-mounted audio, phone, MID and cruise controls	

ENTERTAINMENT	
Acura/ELS Surround® Premium Audio System with CD/AM/FM/SiriusXM™ ^{††} tuner, MP3/Windows Media® Audio compatibility, auxiliary input jack, USB audio interface** and 14 speakers	
Bluetooth® Streaming Audio ^{§,††}	
E-mail function ^{§,††}	
Hard disk drive (HDD) media storage	
SMS text message function ^{§,††}	

§ None of the features we describe are intended to replace the driver's responsibility to exercise due care while driving. Drivers should not use handheld devices or operate certain vehicle features unless it is safe and legal to do so. Some features have technological limitations. For additional feature information, limitations and restrictions, please visit www.acura.ca/disclaimers and refer to the vehicle's Owner's Manual.

† Only available in certain areas. Includes a no-charge trial of three months.

‡ For optimal tire wear and performance, the pressure should be checked regularly with a tire gauge. Do not rely solely on the monitor system.

†† Map database covers major metropolitan areas in Canada and 48 the contiguous U.S. states.

ELITE PACKAGE (Adds to or replaces Technology Package features)	
Auto-dimming side mirrors	
Ambient rear passenger's footwell lighting	
Krell ultra-premium audio system with CD/AM/FM/SiriusXM™ ^{††} tuner, MP3/Windows Media® Audio compatibility, auxiliary input jack, USB device connector** and 14 speakers	
Front and rear parking sensors	
Power rear sunshade	
Rear side sunshades	
Surround view camera system [§] (replaces multi-angle rearview camera with dynamic guidelines)	
Ventilated front seats	

* Estimated fuel economy based on Government of Canada's 5-cycle testing method. Your actual fuel consumption will vary based on driving habits and other factors – use for comparison only. For more information on 5-cycle testing, visit <http://vehicles.nrcan.gc.ca>

** Only compatible with certain devices and operating systems. Cellular data and/or voice charges may apply, including roaming charges and/or other amounts charged by your wireless carrier.

***HomeLink® can be programmed with codes of up to three remote-control devices (e.g., garage-door opener, home security system, etc.).

Δ Subscription required. One year complimentary subscription to AcuraLink Standard, AcuraLink Connect, and AcuraLink Premium included, after which fees, taxes and other charges will apply in order to continue subscription. Ask your dealer for full terms and conditions.



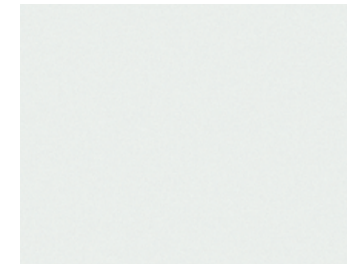
COLOUR & TRIM

Our colour and trim range is an extension of our commitment to craftsmanship and elegance. A palette of timeless exterior colours is complemented by equally refined interior options and a superior grade of leather and fabric trims. These are the finishing touches that elevate your relationship with your Acura, and the road, at every turn.

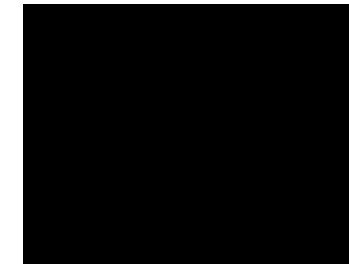
EXTERIOR COLOURS	TECHNOLOGY PACKAGE	ELITE PACKAGE
BELLANOVA WHITE PEARL NH-788P	Ebony or Seacoast Milano Leather	Ebony or Seacoast Milano Leather
CRYSTAL BLACK PEARL NH-731P	Ebony or Seacoast Milano Leather	Ebony or Seacoast Milano Leather
GILDED PEWTER METALLIC YR-596M	Seacoast Milano Leather	Seacoast Milano Leather
GRAPHITE LUSTER METALLIC NH-782M	Ebony Milano Leather	Ebony Milano Leather
POMEGRANATE PEARL R-540P	Seacoast Milano Leather	Seacoast Milano Leather
SLATE SILVER METALLIC NH-829M	Ebony Milano Leather	Ebony Milano Leather

COLOUR & TRIM

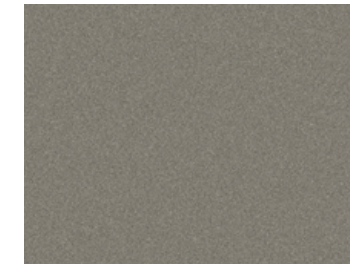
EXTERIOR RLX



BELLANOVA WHITE PEARL NH-788P



CRYSTAL BLACK PEARL NH-731P



GILDED PEWTER METALLIC YR-596M



GRAPHITE LUSTER METALLIC NH-782M

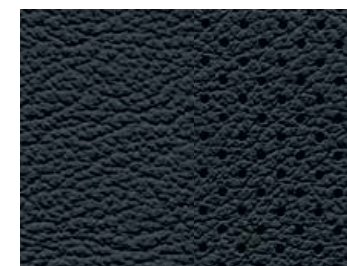


POMEGRANATE PEARL R-540P

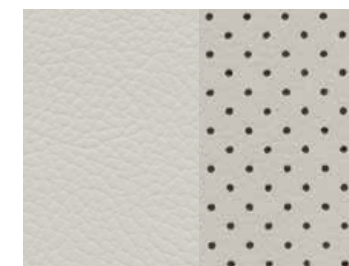


SLATE SILVER METALLIC NH-829M

INTERIOR RLX



EBONY MILANO LEATHER



SEACOAST MILANO LEATHER

ACCESSORIES

Choose from an array of Acura Genuine Accessories that give you the practical luxuries and advanced styling that will bring you together with your machine.

PROTECTION PACKAGE

All-season floor mats
Trunk tray

Accessories listed in the packages may also be added individually to your RLX.

ADDITIONAL ACCESSORIES AVAILABLE

Ashtray, cup-holder style
Car cover
Cargo net
Door edge film
Hood edge deflector
Powertrain heater kit
Rear deck lid spoiler
Rear splash guards
Trunk carpet mat
Trunk edge and bumper protector
Wheel locks



BODY SIDE MOLDING



ILLUMINATED DOOR SILL TRIM



REAR BUMPER APPLIQUÉ

At Acura, when innovation and performance meet purpose, remarkable things can be achieved. Through our commitment and continued involvement with events and organizations across Canada, we seek to create engaging and inspiring experiences for our customers and our community. Because at Acura we believe exhilaration goes beyond the driver's seat.



Acura is honoured to be the Canadian broadcast sponsor of golf's most historic and time-honoured tournament. The Masters is golf's first major open of the season and is famous for its ceremonial "Green Jacket" winner's presentation.



Mobile Clinics
Presented by Acura

Acura is proud to be the official vehicle sponsor of the CN Future Links Mobile Golf Clinics. Close to 70,000 junior golfers are expected to participate in the clinics facilitated by the ten provincial golf associations, each of which are provided a current model year MDX from Acura.

Driving a luxury vehicle should go beyond engineering and amenities. That's why Acura is committed to ensuring your ownership experience is equally luxurious. New Acura owners benefit from four-year 24-hour Roadside Assistance, which includes Dispatch Emergency Roadside Service, Emergency Lockout Service and Traffic Accident Services. See your Acura Retailer for details.

WARRANTY

Your new Acura vehicle comes with the following warranties:

- Major Component – 5-year/100,000-km limited warranty
- Vehicle – 4-year/80,000-km Distributor's limited warranty
- Rust Perforation – 5-year unlimited-distance warranty
- Surface Corrosion – 4-year/ 80,000-km
- Accessories – 4-year/80,000-km limited warranty

(when installed by an authorized Acura Retailer at time of new vehicle delivery). Regular maintenance items and parts are subject to normal wear and replacement, and are not covered by warranty. Certain other items are excluded and certain conditions apply. See your Acura Retailer for details.

ACURA PLUS

Extend your worry-free ownership experience by purchasing additional coverage. Choose from Acura's flexible selection of Mechanical Coverage that extends up to 8 years or 200,000 km, whichever comes first. See your Acura Retailer for details.

LEASING AND FINANCING

Owning your Acura is easy. See your Acura Retailer for complete details on Conventional Financing.*

*A genuine service of Acura Financial Services. Conditions, restrictions and prepayment requirements might apply O.A.C.

Always use seat belts and appropriate child seats. Children 12 and under are safest when properly restrained in a rear seat. Acura reminds you to properly secure all items stored in the cargo area.

Acura reserves the right to terminate or change any of the services and/or features at any time, for any reason. Certain features require registration and may transmit to Acura and/or its providers a vehicle's location, operating conditions or other information that may be tied to the vehicle identification number (VIN) and can be combined to create a track of a vehicle. For Acura's data use and privacy policy, see www.acura.ca/owners/acuralink.

2016 RLX model shown. Some of the technologies described in this brochure come with limitations. See owner's manual for complete details. Specifications, features, illustrations and equipment shown in this catalogue are based upon the latest available information at the time of publication. Remember your seat belts. It's a simple fact of life. Although descriptions are believed to be correct, accuracy cannot be guaranteed. Honda Canada Inc. reserves the right to make changes at any time, without notice or obligation, in colours, specifications, accessories, materials and models. Some vehicles are shown with optional equipment. Some vehicles shown are U.S. models. Canadian specifications may vary. Refer to the owner's manual for detailed towing information. Map Database of the Acura Navigation System covers major metropolitan areas in southern Canada and the 48 contiguous U.S. states. For a list of current detailed coverage areas, refer to the Acura web site, www.acura.ca. Bluetooth is a registered trademark of SIG Inc. ELS Surround is a registered trademark of Panasonic Corporation of North America. HomeLink and HandsFreeLink are registered trademarks or trademarks of Johnson Controls Technology. Windows Media is a registered trademark of Microsoft Corporation. © 2015 Sirius XM Canada Inc. "SiriusXM", the SiriusXM logo, channel names and logos are trademarks of SiriusXM Radio Inc. and are used under license. Available Krell Audio System is a premium audio system developed by Acura in conjunction with Krell Industries. Krell Industries is a trademark of Krell Industries, LLC. www.krellonline.com. Acura, RLX, ACE, Advanced Compatibility Engineering, Acura Navigation System with Voice Recognition, AcuraLink, AcuraWajich, Automated Appointments, Collision Mitigation Braking System, CMBS, Drive-by-Wire Throttle System, i-VTEC, Jewel Eye, Maintenance Minder, On-Demand Multi-Use Display, Real-Time Traffic, SmartVent, SportShift, Super Handling All-Wheel Drive, SH-AWD, Variable Cylinder Management, VCM and VSA are trademarks of Honda Motor Co., Ltd. Acura, a division of Honda Canada Inc., 180 Honda Boulevard, Markham, Ontario, Canada L6C 0H9. 1-888-9-ACURA-9. www.acura.ca.

DEALER E-PROCESS