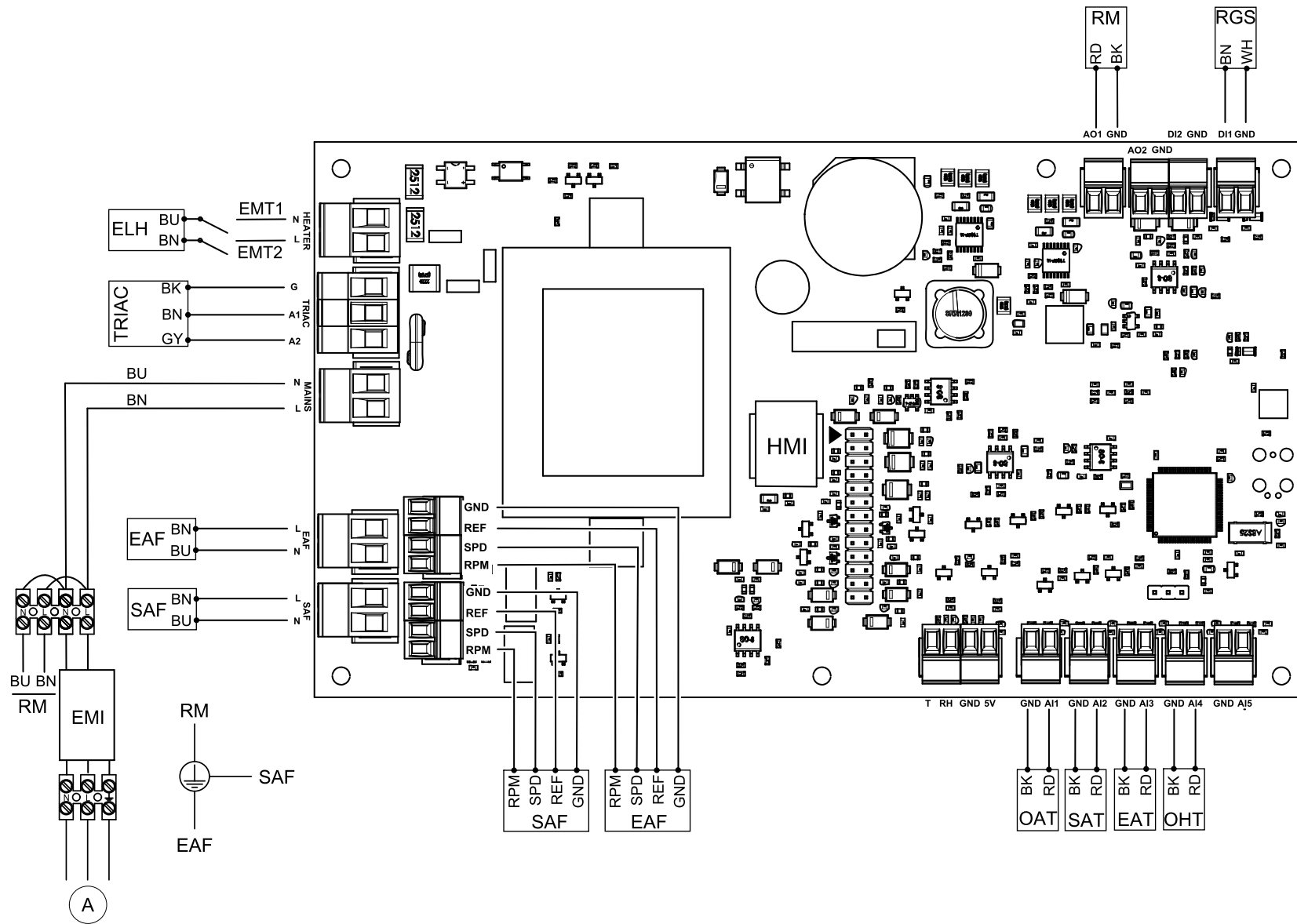
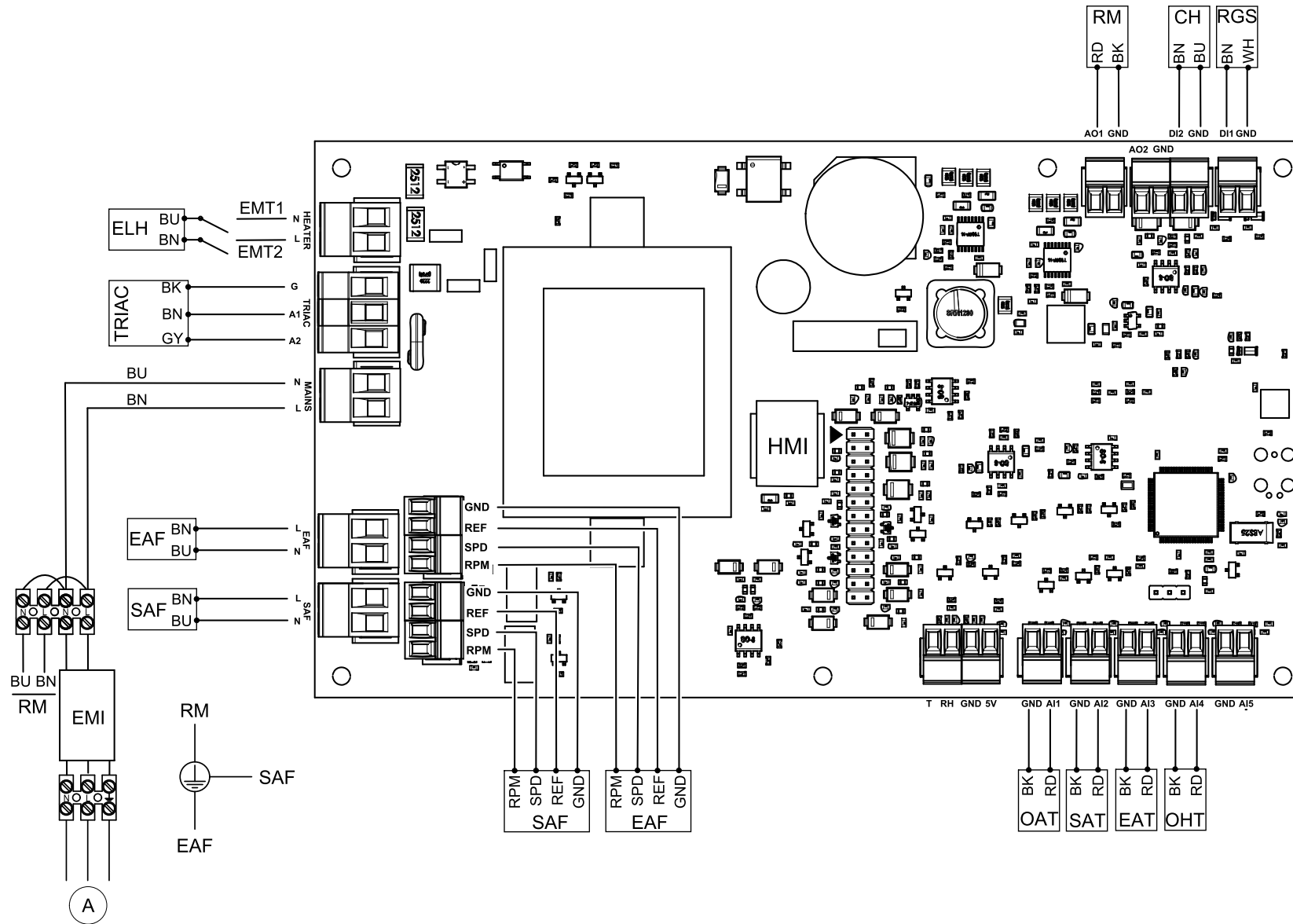


Standard configuration



Cooker hood



Symbol	Description
SAF	Supply air fan.
EAF	Extract air fan.
SAT	Supply air temperature sensor. ¹
EMI	Electromagnetic interference filter for 230 V AC.
ELH	Electrical heater.
OHT	Overheat protection sensor. ²
OAT	Outdoor air sensor.
RM	Rotor motor.
EMT2	Emergency thermostat, manual reset 120°C (normally closed contact)
EMT1	Emergency thermostat, automatic reset 60°C (normally closed contact)
HMI	Modular cable
RGS	Rotor guard sensor.
CH	Cooker hood.
EAT	Extract air temperature sensor.
A	Mains supply 230 V~.
BU	Blue.
BN	Brown.
BK	Black.
RD	Red.
YE	Yellow.
GY	Gray.
WH	White.
GN	Green.

¹ For water heating/cooling battery,

² Units with electrical re-heater battery.