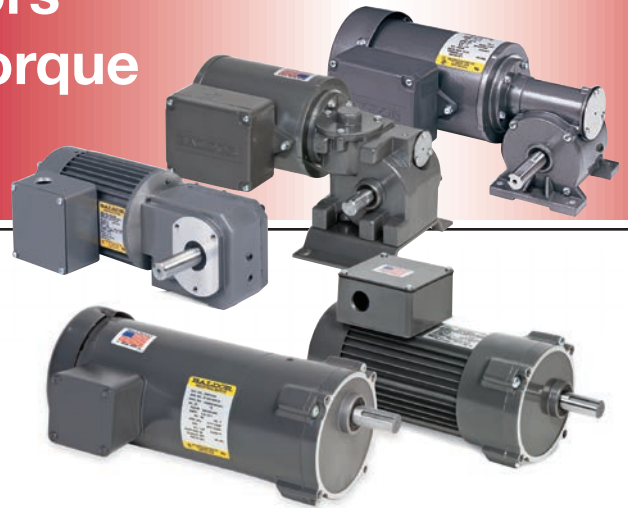


Inverter Duty Gearmotors

5 - 637 in-lbs. Output Torque

5.4 - 345 Output RPM



Applications:

Conveyors, material handling, packaging machinery, agricultural, medical and laboratory equipment, and other applications requiring adjustable speed.

Features:

- Optimal unit performance achieved by precision matched motor and gearhead combinations
- Industry standard foot prints
- Inverter Ready insulation system – meets NEMA MG 1 Part 31.4.4.2
- UL recognized and CSA certified
- High strength bronze gearing in right angle motors
- Induction hardened helical and spur gearing in parallel shaft motors
- Factory lubricated for life with synthetic lubricant
- Non-vented gear housings for flexible mounting and to prevent lubricant contamination
- Supplied with conduit box as standard
- Other ratios, voltages, surface finishes, mountings, conduit boxes, cords, brakes, and encoders are available as custom
- 35 district offices throughout the USA and Canada that can assist with any technical questions
- 33 stocking locations throughout the USA and Canada with 24 hour support

BALDOR

A MEMBER OF THE ABB GROUP

Right Angle

Input Motor Hp	Output RPM 60 Hz	Gear Ratio	Speed Range (CT)	Max. Safe Torque In. Lbs. @ 60 Hz	Catalog Number (a)	List Price	Mult. Sym.	Ap'x Shpg. Wgt.	Motor Type & Gear Style	Voltage @ 60 Hz
FTA Style										
1/25	85	20:1	28 - 128	13	IDGM2401	505	E2	7	2416M-FTA	230
	170	10:1	57 - 255	9	IDGM2402	505	E2	7	2416M-FTA	230
	340	5:1	113 - 510	5	IDGM2403	505	E2	7	2416M-FTA	230
D Style										
1/20	5.4	660:1	2 - 8	75	IDGM2301	660	E2	10	2416M-DB	230
	18.6	130:1	6 - 27	75	IDGM2302	660	E2	10	2416M-DB	230
E Style										
1/12	9.3	180:1	3 - 14	175	IDGM2512	840	E2	15	2512M-EB	230
	16.8	100:1	6 - 25	125	IDGM2511	840	E2	15	2512M-EB	230
B Style										
1/15	28.3	60:1	10 - 44	30	IDGM2406	612	E2	13	2512M-BB	230
	85	20:1	28 - 128	25	IDGM2405	612	E2	13	2512M-BB	230
	340	5:1	113 - 510	15	IDGM2404	612	E2	13	2520M-BB	230
G Style										
1/6	6	280:1	2 - 9	400	IDGM2515	1036	E2	20	2516M-G	230
	14	120:1	5 - 21	375	IDGM2514	1036	E2	20	2516M-G	230
	28	60:1	9 - 42	250	IDGM2513	1036	E2	20	2516M-G	230
K Style										
3/8	22	75:1	7 - 33	315	IDGM2509	868	E2	17	2528M-K	230
	28	60:1	9 - 42	252	IDGM2508	868	E2	17	2528M-K	230
	41	40:1	14 - 62	228	IDGM2506	868	E2	18	2528M-K	230
	83	20:1	28 - 125	138	IDGM2503	868	E2	17	2528M-K	230
	165	10:1	55 - 248	105	IDGM2501	868	E2	17	2528M-K	230
	330	5:1	110 - 495	68	IDGM2500	868	E2	17	2528M-K	230
HK Style										
3/8	22	75:1	7 - 33	315	IDGHM2509	998	E2	19	2528M-HK	230
	28	60:1	9 - 42	252	IDGHM2508	998	E2	19	2528M-HK	230
	41	40:1	14 - 62	228	IDGHM2506	998	E2	19	2528M-HK	230
	83	20:1	28 - 125	138	IDGHM2503	998	E2	19	2528M-HK	230
	165	10:1	55 - 248	105	IDGHM2501	998	E2	19	2528M-HK	230
	330	5:1	110 - 495	68	IDGHM2500	998	E2	19	2528M-HK	230
J Style										
1/2	28.7	60:1	10 - 44	385	IDGM3303	942	E2	28	3324M-JH	230
	57.5	30:1	19 - 86	355	IDGM3302	942	E2	28	3324M-JH	230
3/4	172	10:1	57 - 255	230	IDGM3301	961	E2	30	3324M-JH	230
	345	5:1	113 - 510	125	IDGM3300	961	E2	30	3324M-JH	230

(a) Vertical motor below gearhead not recommended. Avoiding those positions where the high speed oil seal is immersed in oil, will provide greater security against high speed input seal wear.

ATTENTION: Additional ratios, voltages, and ratings are available. Application specific modifications are the common, such as custom shaft dimensions, addition of brakes or encoders, specific power cords, and washdown features. Contact your local Baldor representative for assistance.



Parallel Shaft

Input Motor Hp	Output RPM 60 Hz	Gear Ratio	Stages	Speed Range (CT)	Max. Safe Torque In. Lbs. @ 60 Hz	Catalog Number (a)	List Price	Mult. Sym.	Ap'x Shpg. Wgt.	Motor Type & Gear Style	Voltage @ 60 Hz
PSSH Style											
1/30	9.6	180:1	4	3 - 15	144	IDGMP24180	613	E2	11	2412M-PSSH	230
1/15	18.8	90:1	4	6 - 29	144	IDGMP24090	613	E2	13	2416M-PSSH	230
	27.9	60:1	3	9 - 42	130	IDGMP24060	595	E2	11	2416M-PSSH	230
1/8	55	30:1	3	18 - 83	125	IDGMP24030	595	E2	14	2424M-PSSH	230
1/5	84.5	20:1	2	28 - 128	142	IDGMP24020	561	E2	12	2524M-PSSH	230
1/4	167	10:1	2	56 - 251	86	IDGMP24010	561	E2	12	2524M-PSSH	230
	335	5:1	2	112 - 503	44	IDGMP24005	561	E2	12	2524M-PSSH	230
PSM Style											
1/25	9.4	180:1	4	3 - 14	184	IDGMP25181	729	E2	16	2412M-PSM	230
1/15	18.6	90:1	4	6 - 29	176	IDGMP25091	729	E2	16	2416M-PSM	230
1/8	27.5	60:1	3	9 - 42	204	IDGMP25061	698	E2	14	2424M-PSM	230
1/4	55.8	30:1	3	19 - 84	230	IDGMP25031	698	E2	18	2524M-PSM	230
	83.5	20:1	2	28 - 126	166	IDGMP25021	698	E2	16	2524M-PSM	230
	167	10:1	2	56 - 251	86	IDGMP25011	667	E2	16	2524M-PSM	230
	335	5:1	2	112 - 503	44	IDGMP25006	667	E2	16	2524M-PSM	230
PSL Style											
1/12	9.6	180:1	4	3 - 15	445	IDGMP25182	1059	E2	20	2516M-PSL	230
1/8	18.8	90:1	4	6 - 29	360	IDGMP25092	1059	E2	20	2516M-PSL	230
1/6	28	60:1	3	9 - 42	325	IDGMP25063	1044	E2	18	2516M-PSL	230
1/4	56	30:1	3	19 - 84	247	IDGMP25033	1044	E2	18	2524M-PSL	230
	84	20:1	2	28 - 126	167	IDGMP25023	1025	E2	17	2524M-PSL	230
	167	10:1	2	56 - 251	85	IDGMP25013	1025	E2	17	2524M-PSL	230
	335	5:1	2	112 - 503	44	IDGMP25008	1025	E2	17	2524M-PSL	230
3/8	41	60:1	3	14 - 62	500	IDGMP25062	1037	E2	20	2528M-PSL	230
	55	30:1	3	18 - 83	350	IDGMP2505	1037	E2	20	2528M-PSL	230
	83	20:1	2	28 - 125	233	IDGMP2503	1012	E2	18	2528M-PSL	230
	165	10:1	2	55 - 248	116	IDGMP2501	1012	E2	18	2528M-PSL	230
	330	5:1	2	110 - 495	58	IDGMP2500	1012	E2	18	2528M-PSL	230
1/2	43	40:1	3	14 - 65	637	IDGMP33040	1037	E2	28	3324M-PSLH	230
	57	30:1	3	19 - 86	482	IDGMP33030	1037	E2	28	3324M-PSLH	230
	86	20:1	2	29 - 129	326	IDGMP33020	1012	E2	25	3324M-PSLH	230
	115	15:1	2	38 - 173	245	IDGMP33015	1012	E2	25	3324M-PSLH	230
	172	10:1	2	57 - 258	164	IDGMP33010	1012	E2	25	3324M-PSLH	230
	345	5:1	2	115 - 518	82	IDGMP33005	1012	E2	25	3324M-PSLH	230

(a) Vertical motor below gearhead not recommended. Avoiding those positions where the high speed oil seal is immersed in oil, will provide greater security against high speed input seal wear.



Gearmotor Accessories

“L” Type Mounting Brackets for Parallel Shaft Gearmotors

Description:

- Mounting brackets for PSSH, PSL, and PSLH gearmotors. Securely mounts to gear face in 90 degree locations for floor, wall or ceiling mount. LB74 bracket is not recommended for units weighing over 20 lbs. For units weighing more than 20 lbs. use LB75.

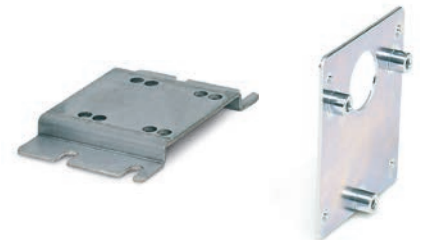


Catalog Number	Gearhead Style	List Price	Mult. Sym.	Color	Ap'x. Shpg. Wgt.
LB73	PSSH	49	A8	Black	2
LB74	PSL	69	A8	Black	2
LB75	PSL/PSLH	96	A8	Black	7
LB73GR	PSSH	49	A8	Baldor Grey	2
LB74GR	PSL	69	A8	Baldor Grey	2
LB75GR	PSL/PSLH	96	A8	Baldor Grey	7

PSM Parallel Shaft Mounting Adapters

Description:

- **B92:** Formed steel mounting base that bolts to the machined surface on bottom of the PSM gear box. Provides secure foot mounting of gearmotor and drop-in interchangeability with other major manufacturers.
- **B93:** Three point face mounting adapter. Provides interchangeability with industry standard mounting dimensions.



Catalog Number	Description	Ap'x. Shpg. Wgt.
B92	Foot Mount	1
B93	3 Point Face Mount	1

Feedback Devices

Item	Description
Optical	U.S. Digital (E2) - 500 or 1000 PPR (pulse per revolution)
	Renco (R35i) - 500 or 1000 PPR
	BEI (H20) - 200, 500, or 1000 PPR
Hall Effect	1-60 PPR (single pulse)
	1-60 PPR (With Quadrature)



AC Variable Speed Drives

Drive Type	Hp Range	Power Supply	Voltage Range	Literature
ACS55	1/4 - 3.0 Hp	1 Phase	110-120 and 200-240 VAC	501 or CA769
ACS150	1/2 - 3.0 Hp	1 Phase	200-240 VAC	
	1/2 - 5.0 Hp	3 Phase	200-240 and 380-480V VAC	
Series 5	1/2 - 2.0 Hp	1 Phase	110-120 and 200-240 VAC	
	1.0 - 5.0 Hp	3 Phase	200-240 and 380-480V VAC	



BALDOR

A MEMBER OF THE ABB GROUP

Baldor Electric Company

P.O. Box 2400 • Fort Smith, AR 72902-2400 U.S.A.

Phone (479) 646-4711 • Fax (479) 648-5792

www.baldor.com