



SIMPLER, FASTER, SMARTER FIXES. COMPLETE, CONFIDENT REPAIRS. SATISFIED CUSTOMERS.

Juggling codes, data, functional tests, special functions, relearns, resets, recalibrations and more can be incredibly time-consuming — and frustrating, too. The 19.2 Software Upgrade from Snap-on can help you power up your productivity and overcome even the toughest obstacles more quickly, thanks to more robust vehicle coverage, innovative new features and the ability to handle hundreds of automotive and motorcycle systems from 58 different manufacturers.



snapon.com/diagnostics

SOFTWARE UPGRADE 19.2 HIGHLIGHTS

WHY SNAP-ON FOR DIAGNOSTICS?

Everything is moving faster and becoming more complex. New automotive technology makes it more important for customers to be up to date in equipment and software.

Codes, data, functional tests, special functions, relearns, resets and more. If trying to solve the repair, juggling all of this information is time consuming and frustrating.

Shops, whether body, repair, glass replacement, oil change, used car dealerships or mobile diagnostic businesses, can rely on Snap-on for the most comprehensive OEM-specific coverage. With innovative features and capabilities for hundreds of automotive and motorcycle systems from 58 manufacturers, shops overcome the toughest obstacles quickly.

SOLUTIONS FOR TOMORROW'S JOBS TODAY

Diagnostic solutions from Snap-on focus on making jobs less complex and faster, relieving manual procedures where possible.

Pre- and Post-Scan Vehicle System Reports

You can speed approvals, repairs and payment with pre- and post-scan reports and the Snap-on Cloud.

Performing a **pre-scan vehicle system report** spots any hidden issues and makes your customer aware of problems. Code identification and display helps to accelerate necessary approvals and repair.

A **post-scan vehicle system report** confirms the original problems have been fixed, building trust in your shop and customer satisfaction.

Reports may be printed, emailed or viewed online.



The Snap-on® Cloud

With Wi-Fi and a Snap-on tool with the newest software installed, automatically upload and access images, vehicle system reports and more from the Snap-on Cloud using a smart phone, tablet or PC.

Capture

- **Capture and Auto-load Reports:** With the most current Snap-on software loaded on a tool, users can capture and upload vehicle system reports on a ZEUS®, VERUS® Edge, APOLLO-D₈™, MODIS Edge™, MODIS Ultra™ or SOLUS Edge™
- **Image Storage for ZEUS, VERUS Edge and Diagnostic Thermal Imager:** Take pictures and screenshots with ZEUS or VERUS Edge, create images with the Diagnostic Thermal Imager Elite and store them in the cloud
- **Direct Repair Order linkage:** Create permanent links which lead directly to the saved image or vehicle system report that can be added to and accessed from shop management software

Categorize

- **Mark Files:** Identify images as 'Known good' or 'Known bad'
- **Tag Files:** File tagging makes keyword search fast for future reference
- **Get files:** By customer name, VIN or sort by date allowing for easy retrieval

Collaborate

- **Compare and Share:** Use with others to facilitate diagnosis and repair
- **Be the Expert:** Share "Known good" or "Known bad" images

Communicate

- **My Network:** Add up to 20 contacts and easily share files
- **Flexible Sharing:** Communicate vehicle system reports and images via text or email
- **Speed It Up:** You can share pre-scan reports and images with customers to receive quick repair approvals and post-scans with insurance companies to confirm OEM repair requirements have been met

SOFTWARE UPGRADE 19.2 HIGHLIGHTS

EMPOWER ON SALES WITH NEW AND IMPROVED COVERAGE

What is the Opportunity in Collision Diagnosis and Repair?

Collision repair is not covered by a manufacturer’s warranty, regardless of vehicle age. This is good news for you because the repair may be done outside of the dealership. Furthermore, many insurance companies pay for pre- and post-scans, where scans are required by vehicle manufacturers. This provides new opportunities for business growth.

Safety and Advanced Drivers Assistance Systems (ADAS)

Snap-on offers the most safety and ADAS coverage in the market today. In this new software get more Vehicle Communications Systems, and new Guided Component Tests for a full testing and recalibration solution to complete the repair.

More Vehicle Communications

Snap-on continues to add to its already expansive coverage, which includes Airbag, Intelligent Cruise Control, Collision Mitigation, Electronic Parking Brake, Head Up Display, Lane Departure Warning, Occupant Classification, Parking Assist, Radar Sensor, Surround View Mirror and more.

NEW Guided Component Tests

New to ADAS? Snap-on onboard CTM training and Guided Component Tests help eliminate guesswork by walking you through the process for pinpoint diagnosis:

- Adaptive Cruise Control
- Adaptive Front Lighting
- Blind Spot Detection Radar
- Blind Spot Warning System
- Collision Mitigation
- Electronic Parking Brake
- Forward Collision Warning System Unit
- Front and Rear Camera
- Lane Departure Warning
- Object Detection
- Parking Assist
- Rain Sensors
- Steering Angle Sensor

Continuous General Repair Innovation and Growth

You can be confident in the unparalleled breadth and depth of the general repair coverage Snap-on provides. Snap-on invests in the latest technology innovations, resources and aftermarket repair relationships to significantly expand vehicle systems coverage and strengthen tool capabilities.

Onboard Capabilities**

- Powerful **bi-directional control**, plus **scripted functional tests** to automatically run through multi-step tests in no time
- **Instant ID** means vehicles will identify themselves to the scan tool automatically, saving time and eliminating entry errors
- **One-Touch Code Scan** for a quick and complete health check of all available systems, plus clear codes with one touch, saving time and preventing comebacks
- The **Vehicle System Report** offers results for available systems plus Global OBD-II codes and Readiness Monitors for a more complete view of vehicle systems. Great for pre-scan and post-scan reporting to customers and insurance companies
- Access to the **Snap-on Cloud** for up-to-the-second online storage. Archive, reference, retrieve and communicate Vehicle System Reports, thermal images and more to customers, colleagues, insurance companies
- Exclusive **Fast-Track® Guided Component Tests** show how to test, where to connect and what results to look for
- **Component Test Meter (CTM) Training** including Power User Tests, How To’s and more
- Exclusive access to **SureTrack®**, providing Real Fixes and verified parts replacement records from millions of successful repair orders
- **Intelligent Diagnostics** is software that guides you through every step needed to find the solution, while avoiding the steps you don’t, displaying only relevant information to the specific vehicle and fault code. It includes Smart Data, released continuously before, during and after every software release
- **Software options** to get the most comprehensive software available for domestic, Asian and European vehicles
- Wide-ranging **support programs**, including a Customer Care hotline, extended warranty and online Training Solutions®

**Eligible platforms only. See Features At-A-Glance on page 8

SOFTWARE UPGRADE 19.2 HIGHLIGHTS

NEW FEATURES EMPOWER UP PERFORMANCE

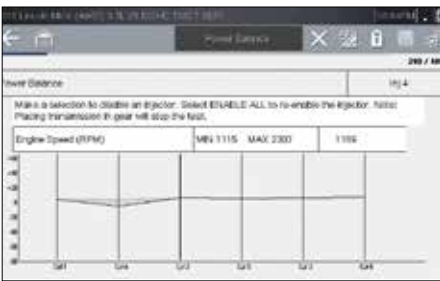
Intuitively Categorized Systems Menu

Each of our diagnostic tools offers categorized groups of commonly chosen systems, modules or procedures for quick and easy selection



Ford Power Balance Test History

Enhancing software upgrade 18.4's Ford Power Balance Test display by showing the current value along with a continuous record of its history, making it easier to identify and track power inconsistencies



On-Tool Training and Classes for Guided Component Test

Previously known as Top Level Menus, Training and Classes is directly accessible from the home menu on CTM-enabled devices. Get Power User Tests, How To's and much more



ZEUS® and VERUS® Edge

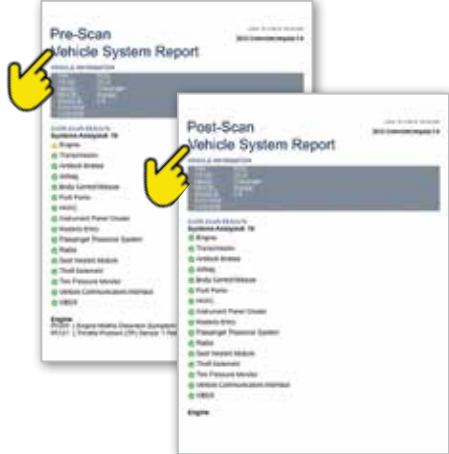
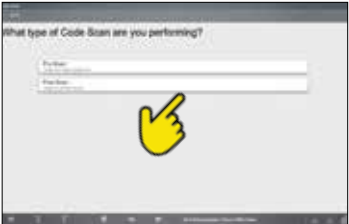
New Service Resets and Relearns

This new feature serves up all the necessary information about related and required repair procedures that must be done to complete the job. It eliminates the time it takes to perform research manually and allows you to focus on getting the repair done accurately and quickly



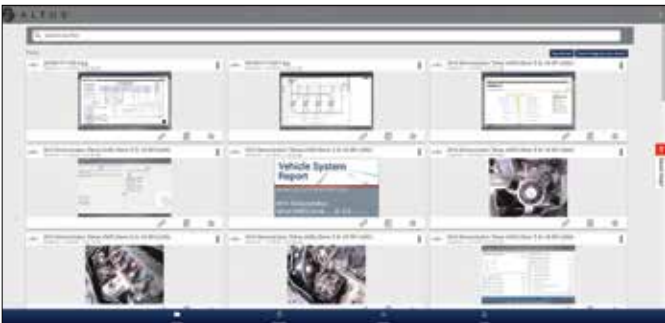
Pre- and Post-scan Report Labeling

New “pre” and “post” labeling options on Vehicle System Reports spell out clearly each report’s purpose without guessing



Snap-on® Cloud

Automatically upload pre-/post-scan reports, plus save device screenshots and photograph images to enhance a specific repair file or to share with others



FEATURES AT-A-GLANCE

PLATFORM FEATURES	P1000™	ETHOS® Edge	SOLUS Edge™	APOLLO-D8™	MODIS Edge™	ZEUS®
AUTOMOTIVE COVERAGE	X	X	X	X	X	X
MOTORCYCLE COVERAGE	X					
COLOR DISPLAY SCREEN	5.6"	5.6"	8"	8"	8"	10"
TOUCHSCREEN OPERATION & INTUITIVE SYSTEM MENU	X	X	X	X	X	X
HI-SPEED WIRELESS VEHICLE CONNECTION						X
INTELLIGENT DIAGNOSTICS ACCESS WITH SOFTWARE PLAN				X		X
TOPIC-SPECIFIC HELP						X
EXCLUSIVE SURETRACK® EXPERT INFORMATION			X	X	X	X
INSTANT ID	X*	X	X	X	X	X
QUICK LOOK-UPS FROM HOME SCREEN		X	X	X	X	X
TIRE & WHEEL SERVICE, OIL CHANGE SPECS AND RESETS	X*	X	X	X	X	X
ONE-TOUCH CODE SCAN & CLEAR	X	X	X	X	X	X
CODE SCAN REPORT	X	X				
PRE-/POST-SCAN VEHICLE SYSTEM REPORT AUTO UPLOAD TO SNAP-ON CLOUD			X	X	X	X
DEVICE SCREENSHOTS & PHOTOS UPLOAD TO SNAP-ON CLOUD						X
OEM-SPECIFIC FAULT CODES	X	X	X	X	X	X
FUNCTIONAL TESTS & BI-DIRECTIONAL CONTROLS	X	X	X	X	X	X
ENHANCED SERVICE RESETS & RELEARNS MENU, TSBs & COMPONENT-BASED TOP REPAIRS						X
RELEARNS & ADAPTATIONS	X	X	X	X	X	X
SCOPE MULTIMETER					X	X
LIVE DATA GRAPHING (SCANNER AND/OR SCOPE)	X	X	X	X	X	X
SIDE-BY-SIDE CTM AND SCANNER VIEWING						X
EXCLUSIVE GUIDED COMPONENT TESTS					X	X
ONBOARD CTM TRAINING COURSES					X	X
WI-FI ENABLED	X	X	X	X	X	X
INTERNET BROWSER						X
SOFTWARE SUBSCRIPTION PROGRAM	X	X	X	X	X	X
ONLINE SOFTWARE UPDATE VIA SHOPSTREAM CONNECT™	X	X	X	X	X	
OVER-AIR AUTOMATIC SOFTWARE UPDATE						X
SHOPKEY® REPAIR INFORMATION & MANAGEMENT SYSTEM (OPTIONAL)						X
INTERNAL 60GB SOLID STATE DRIVE						X
ONBOARD CAMERA						X
WIRELESS PRINTING						X
EMAIL SUPPORT & INSTALL YOUR OWN SOFTWARE APPLICATIONS						X
MICROSOFT® SECURITY ESSENTIALS						X
DOCKING STATION W/HDMI PORT FOR EXTERNAL DISPLAY (OPTIONAL)						X

*Available for automotive coverage only

INTELLIGENT DIAGNOSTICS SOFTWARE

Comprehensive enough to provide all the diagnostic and repair tips you need, smart enough to skip the ones you don't!

All the functions and repair tips you need to diagnose, repair and manage any issue. But unlike any software before, it practically anticipates your next move by guiding you through every step needed to find the solution, while avoiding the steps you don't. It displays only the information that's relevant to the specific vehicle and fault code.

Intelligent Diagnostics includes Smart Data, which comes in continuous updates throughout the year. Get thousands more functional tests, PIDs, Guided Component Tests, Common Replacement Parts and TSBs added before, during and after every software release.

From Technical Service Bulletins and scanner Smart Data to SureTrack® Expert Information, Intelligent Diagnostics is the most sophisticated and intuitive software we've ever created. Accessing all the Intelligent Diagnostics functions requires an applicable software agreement, which more than pays for itself through its depth of information and time savings.

Intelligent Diagnostics is limited to eligible tools. See page 12 for software purchase options.

SURETRACK® – THE FASTEST PATH TO FIXED

Available in Snap-on diagnostic tools and online, SureTrack delivers expert information with the latest Snap-on Software Upgrade. Get Real Fixes and verified parts replacement records harvested from millions of actual repair orders.

New content is continually added and with the latest software you instantly access:

- Verified parts replacement records showing successful fixes
- Expert information hot-linked directly from diagnostic trouble codes
- Exclusive insight based on experience from millions of repair orders
- Vehicle-specific fixes based on symptoms, codes and mileage
- Definitive, reliable answers, validated by SureTrack expert technicians

**Eligible platforms only. See Features At-A-Glance on page 8



SOFTWARE OPTIONS**

AVOID GAPS IN COVERAGE AND GET ALL NEW FEATURES

ZEUS® Intelligent Diagnostics Data Plan†

Three-year plan exclusive to ZEUS. Includes complete data services, all available domestic, Asian and European coverage, SureTrack®, plus one-year extended warranty included and online upgrades for eligible platforms.

APOLLO-D₈™ Intelligent Diagnostics Prepaid Plan†

One-year plan exclusive to APOLLO-D₈. Includes complete data services, all available coverage for domestic, Asian and European vehicles, SureTrack, plus online upgrades.

Single Software Upgrade

Six months of all available coverage for domestic, Asian and European vehicles, plus SureTrack.

**Eligible platforms only. See Diagnostic Tool Comparison

† See back cover

EXTENDED WARRANTY PROTECTION

Snap-on offers peace of mind and protection for some of your customer's most valued business assets – their Snap-on diagnostic tools. Snap-on is proud to offer this comprehensive and flexible extended warranty coverage for an additional 12, 24 or 36 months" — it's your customer's choice.

Here are some key reasons why the Extended Warranty Program is right for your customer:

- Coverage equal to the original factory warranty
- Continuous protection for pennies a day
- Flexible financing available
- Protection against future parts and labor cost increases
- Increased resale value
- Can pay for itself in cost savings with just one repair
- Provides years of worry-free use
- 12, 24 or 36 month extended coverage"
- Genuine Snap-on service parts and expert service technicians
- Complimentary shipping and handling

The Snap-on Extended Warranty Program is the most comprehensive extended warranty in the business that offers the same complete coverage as the original warranty. Whether customers choose 12, 24 or the 36 month extension, its universal protection remains the same!

" Extended Warranty Program available with new diagnostic tool purchases as well as any diagnostic tool while under its original Snap-on warranty



P1000™ – THE ALL NEW DIAGNOSTIC SCAN TOOL FOR MOTORCYCLES

We took the Snap-on quality and expertise techs already know and trust and created a new diagnostic scan tool engineered to help customers take on diagnostic jobs confidently and effortlessly.



- Comprehensive OEM-specific coverage for nine domestic, Asian, and European motorcycle makes as far back as 2000
- Makes include: Harley-Davidson®, BMW®, Victory®, Indian®, Ducati®, Yamaha®, Honda®, Kawasaki® and Suzuki®
- Comprehensive diagnostics with codes, live data graphing, functional tests, relearns and adaptations
- Accelerate maintenance tasks with special functions like brake bleeding, service light reset, compression tests and fuel tank drain
- PLUS! Automotive coverage for 49 domestic, Asian and European vehicles as far back as 1980

OPTIONAL HARLEY-DAVIDSON COVERAGE FOR ZEUS®, APOLLO-D₈™ AND VERUS®, MODIS™, SOLUS™ AND ETHOS® FAMILIES

Delivers comprehensive coverage for all major systems on 2000 and newer

Harley-Davidson motorcycles, including: Engine, ABS, Hands-free, Security, Turn Signal, Hand Control Module, Body Controls, Instrument, Speedometer, Tachometer.

The Smart Vehicle Interface includes both Harley-Davidson adapters in one and a handy support hook helps keep the Smart Interface safe from hot pipes and moving parts.

Read and clear OEM-specific fault codes. Perform One-Touch Code Scan for all available systems. Display live data in digital and graphing views. Control vehicle systems and verify component operation with a wide range of functional tests and more.





EMPOWER UP

For a complete run-down of available coverage, refer to the Vehicle Coverage Guide located at diagnostics.snapon.com/19.2

Some functions shown require an internet connection

[†] Intelligent Diagnostics Plan

Data package is separate and may be included on EC. Rates and terms are subject to credit approval at time of sale and terms of the program and contract. Not everyone will be approved. Payment based on contract term. Not all platform products qualify

Diagnostic Training & Support

Training

WEB diagnostics.snapon.com/training

Support

WEB diagnostics.snapon.com/faq

EMAIL diagnostics_support@snapon.com

PHONE **(800) 424-7226**

snapon.com/diagnostics



Snap-on is a trademark, registered in the United States and other countries, of Snap-on Incorporated. This publication contains many Snap-on Incorporated trademarks, including but not limited to FAST-TRACK® and SURETRACK®. All other marks are trademarks or registered trademarks of their respective holders. ©2019 Snap-on Incorporated. All pictures and illustrations shown are for reference purposes only. All information including specifications herein are subject to change without notice. EAZ0042L56C Rev. A

PR