



WEDDINGS
at **THE NED**



Photography by Ashlee Taylor; Bridal dress & accessories from LA Bespoke; Bouquet by Grandirosa

Set in the former Midland Bank building, The Ned was designed by Sir Edwin ‘Ned’ Lutyens in 1924 and has nine restaurants, 250 bedrooms channeling 1920s and 1930s design, a range of men’s and women’s grooming services and Ned’s Club, where members have access to a rooftop pool, gym, spa, hammam and late night lounge bar in the original bank vault.

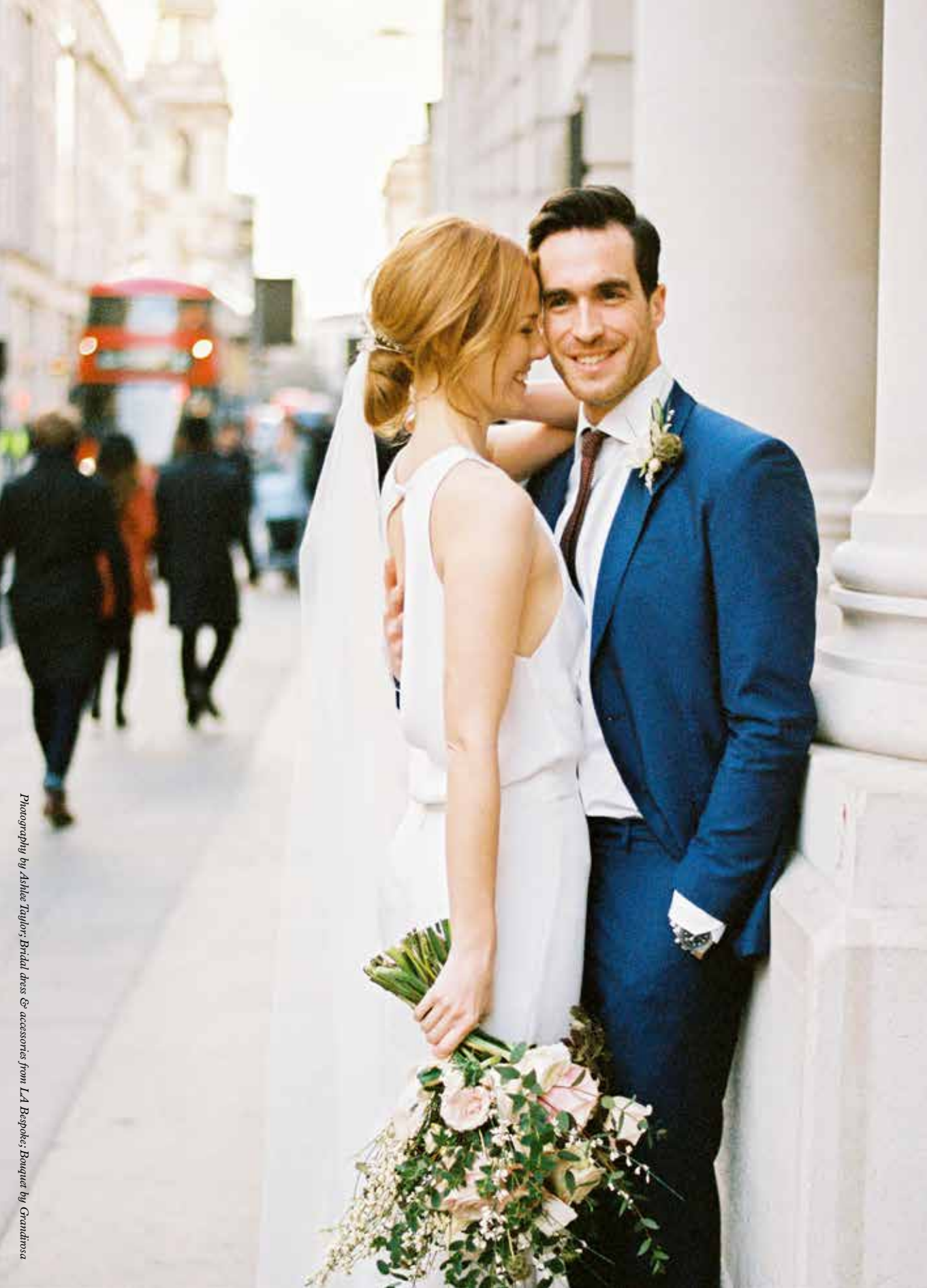
Contents

| | |
|--------------------------------|----|
| INTRODUCTION | 7 |
| THE SPACES | 9 |
| The Tapestry Room | |
| The Saloon | |
| GETTING READY | 35 |
| Pre-wedding spa & grooming | |
| THE DINNER | 39 |
| Sample food menus | |
| THE END OF THE NIGHT .. | 44 |
| Rooms & Suites | |
| WEDDING PACKAGES | 56 |
| CONTACT | 59 |



THE NED

THE NED



Getting married at The Ned couldn't be easier. We can take care of everything you need, from the ceremony and your menu, to the flowers and music.

Weddings at The Ned take place on the historic sixth floor, which has six rooms and two outdoor terraces with views across the City. There's space for weddings of all sizes, whether you want an intimate affair for 50, or a large-scale gathering of 200. You can hire out each event space on its own, from the cosy Rose Room right through to The Tapestry Room. Alternatively, takeover the entire sixth floor for the day and along with hosting your ceremony, drinks reception and dinner, you'll also have space for any extras you might want, like a photobooth room, a dedicated present area, a green room for the band or somewhere for children to play.

Our chefs will work closely with you to create your perfect wedding menu – from canapes and light bites, to a formal sit-down dinner and late-night snacks to keep your guests going until the early hours.

Ned's Club Spa is just a lift ride away, offering manicures, pedicures and facials, and a parlour for hair and make-up, to ensure getting ready on the big day is as seamless as possible.

As Bride and Groom, you'll spend your wedding night in our Terrace Suite, with arched windows, a fourposter king-size bed, and your own private terrace. There's also room for your wedding guests to rest their heads at The Ned once the party is over, so you can re-live the whole day again over breakfast on your first morning as newlyweds.

Photography by Ashlee Taylor, Bridal dress & accessories from LA Baspoke, Bouquet by Grandiosa



Photography by Ashlee Taylor; Styling by Jessie Westwood; Tableware by Soho Home; Flowers by Grandirosa



The Spaces

The entire events floor at The Ned can be yours for the day, which includes six rooms and two outdoor terraces. We can host up to 120 guests for dinner or 200 guests for a reception, with all spaces boasting period features and ample arched windows to allow for plenty of natural light.

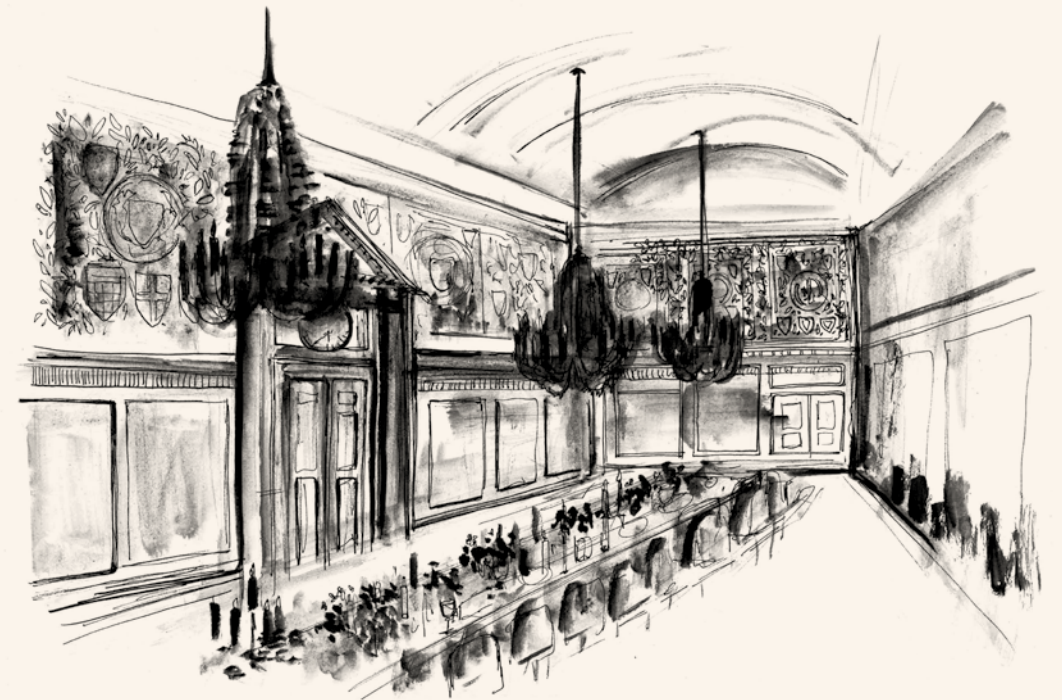
Our more intimate event rooms can also provide the perfect backdrop for smaller weddings.



The Tapestry Room



Photography by Ashlee Taylor; Styling by Jessie Westwood; Flowers by Grandirosa



165 SQ M | 1776 SQ FT

The Tapestry Room has a capacity of up to 120 people seated or 200 standing

Featuring original walnut panelling and crystal chandeliers, The Tapestry Room is our most iconic space. It takes its name from the remarkable pastoral tapestry that wraps around the upper walls - the largest of its kind ever produced in England - when it was created in the 1920s.





Photography by Catherine Mead



Photography by Simon Brown



Photography by Ashlee Taylor; Styling by Jessie Westwood; Dessert table by Peborjon



Photography by Catherine Mead

The Saloon



125 SQ M | 1345 SQ FT

*The Saloon has a capacity of up to
70 people seated or 120 standing*

Dominated by an 18th-century chandelier
sourced from London's Devonshire House,
The Saloon has original ornate chalk frieze
and a restored parquet floor.



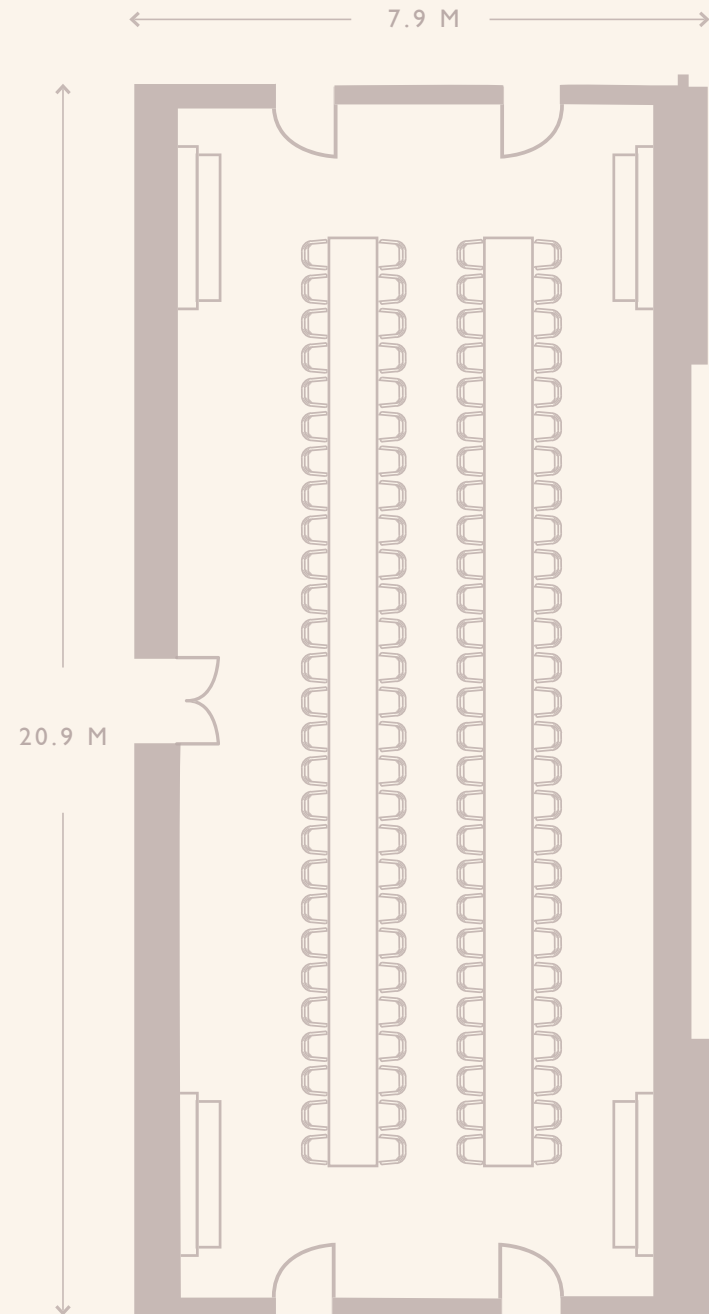




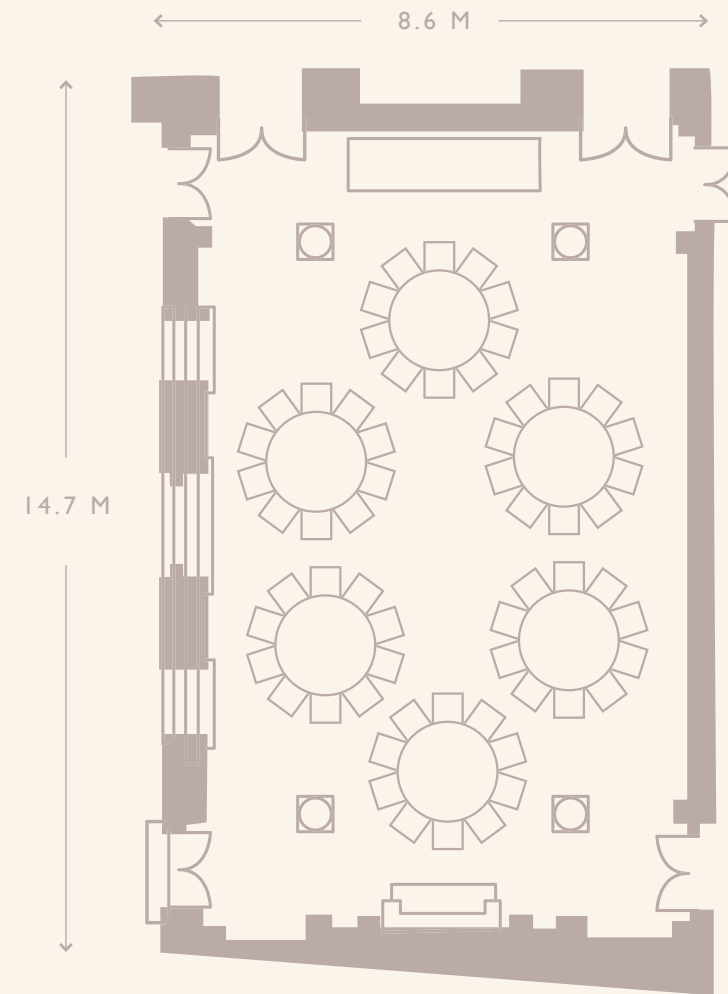
Photography by Ashlee Taylor; Styling by Jessie Westwood; Dessert table by Cakes by Krishanthi



The Tapestry Room



The Saloon



OTHER TABLE ARRANGEMENTS AVAILABLE



Photography by Simon Brown



Photography by Aubree Taylor; Styling by Jessie Westwood; Dress & bridal accessories from LA Bespoke



Photography by Ashlee Taylor; Styling by Jessie Westwood; Hair & makeup by Jessie May Young



Getting Ready

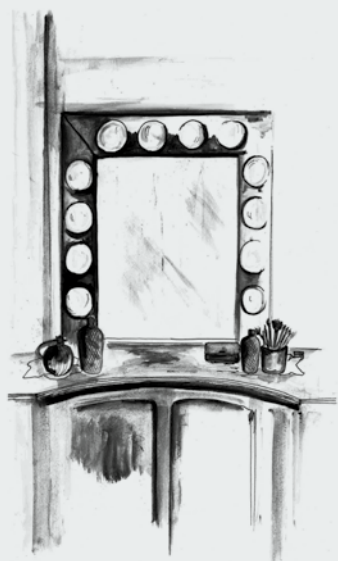
Ned's Club Spa brings together a range of men's and women's services in a relaxed atmosphere. The spa includes a 20 metre indoor pool, hammam and steam and sauna rooms.





In the spa you'll find Cheeky; a fast, no-nonsense service for nails, Cowshed; a one-stop shop for head-to-toe maintenance, and Ned's Parlour; our hairdressing salon.

For the gents there's Ned's Barbershop, a classic, speakeasy-style barbershop for the modern man, offering everything from a haircut to a traditional wet shave or facial.



Pre-Wedding Treatments

Bridal Hair Styling

Cut & Blow-dries

Hair Extensions

Traditional Wet Shaves

iS Clinical Facials

Cowshed Moody Massages

Cheeky Manicures

Cowshed Pedicures

Waxing

Private Hammam Treatments

VitaDrip® infusions from The Elixir Clinic





Photography by Ashlee Taylor; Bridal accessories from LA Bespoke



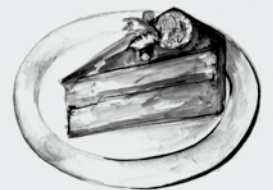
Photography by Ashlee Taylor



The Dinner

Dinner will be served in your choice of location – The Saloon or The Tapestry Room.

On arrival, you and your guests will be served a selection of canapes, sparkling wine or Champagne, cocktails and soft drinks.





Wedding Breakfast

EXAMPLE MENU

Butternut & ginger soup, crab cannelloni

Orkney scallops, roasted & raw cauliflower, caper beurre noisette

Beef carpaccio, chestnuts, Treviso & cabernet sauvignon dressing

Game terrine, pickled vegetable salad, truffle mayo

Fillet of venison, spiced kale, swede & honey

Fillet of beef, braised cheek, wild mushroom & Madeira

Herb crumbed cannon of lamb, red pepper, chorizo & black olive

Wild fillet of seabass, spiced bulgar wheat, kaafir lime sauce

Sticky toffee pudding, vanilla ice cream & butterscotch sauce

Chocolate marquis, blackcurrants

Pear crumble with oats & almonds, Jersey cream

Mandarin parfait, shortbread, chocolate ganache

Late Night Snacks

EXAMPLE MENU

SUBSTANTIAL CANAPES

BBQ pulled pork, asian slaw in brioche bun

Seabass tacos, charred spring onion & chilli

Vermicelli coated prawn lollipops with togarashi salt

Beef burger slider, red onion chutney & butter lettuce

Beef carpaccio, parmesan & truffle

Lebanese chicken, tahini spiced yoghurt

Wild mushroom arancini, trompette & Madeira puree

BOWLS

Risotto of courgette flower & parmesan

Lobster mac & cheese

Braised lamb neck 'Shepherds pie'

Fricassee of hand rolled gnocchi,
trompette, cauliflower & truffle





Party On

You can keep the party going until 1am, or later on request.

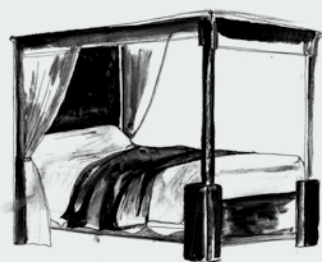
If you want to stay late, we offer evening munchies for guests.

Dj must finish at midnight but background music fine until 1am



The End of The Night

Your friends and family can book from our 250 bedrooms – from intimate Cosy rooms to the 100 square metre Lutyens suite, with two en-suite bedrooms, a large lounge with a custom-made eight-seat corner sofa, and a bar and dining space. All rooms come with large walk-in rainforest showers and plenty of full-size Cowshed products.







Our 50 sq m Terrace Suite is perfect for the wedding couple – with generous dome windows, a richly draped four-poster king-size bed, velvet ottoman and original mahogany fireplace. A doorway from the main bedroom leads outside, where there’s a 35 square metre terrace with a large dining area and lounge, the perfect spot for hosting guests.









Making it Yours

The Ned works with a variety of companies who can design your wedding to your exact specification. Between us we can take care of everything from florists, decorations and entertainment, to photographers and stationery.

Your event planner will share our recommended suppliers list to help you add that personal touch to the big day.



Photography by Ashlee Taylor; Styling by Jessie Westwood; Stationery by Design My Wedding; Flowers by Grammosa

Your £50,000 Wedding

Menu tasting for four guests

Four weeks temporary membership to Ned's Club Active

Champagne breakfast in the suite for one half of the wedding party and pre-wedding drinks for the other half of the party

Seasonal flowers to decorate the Saloon and Tapestry Room

Entertainment for reception (violinist or harpist)

Welcome reception, including a selection of canapes, champagne, cocktails and soft drinks

Four course dinner menu, tea & coffee, petit fours, personalised menus

Wine during dinner

Champagne for the toasts

After dinner drinks reception to include beers, house wine, house spirits and soft drinks

Selection of evening munchies

DJ equipment for the after-dinner party

Two nights' accommodation for the wedding couple in the Terrace Suite

Eight Medium rooms for two nights for the wedding party

Late check out at 2pm for the wedding couple

BASED ON 100 GUESTS
12.5 % DISCRETIONARY SERVICE CHARGE ON FOOD & BEVERAGE



Your £30,000 Wedding



Menu tasting for the wedding couple

Reception, including a selection of canapes, prosecco, cocktails and soft drinks

Three course wedding dinner, including tea & coffee

Half bottle of wine per person with dinner

Unlimited mineral water

Prosecco for the toasts

After dinner drinks reception with beers, house wine, house spirits and soft drinks

DJ equipment for the after-dinner party

Evening munchies

A medium bedroom for the wedding couple on the night of the wedding

Guaranteed late check out for the wedding party

BASED ON 100 GUESTS
12.5 % DISCRETIONARY SERVICE CHARGE ON FOOD & BEVERAGE

*Bespoke Wedding Packages
from £200 per person*

12.5 % DISCRETIONARY SERVICE CHARGE ON FOOD & BEVERAGE



Photography by Ashlee Taylor; Styling by Jessie Westwood; Bouquet by Grandiroso



Get in Touch

For enquiries and availability,
please call us on **020 3828 2000**
or email **weddings@thened.com**

THENED.COM



THE NED

LONDON
