



NetStick/TITAN-GLU194ST

Global Telecom's *NetStick/TITAN*¹ is an advanced multi-band LTE Cat 4 mobile device designed for easy deployment across a variety of industries with global connectivity. The simple plug and play interface enables connection to any host, using standard USB 2.0 or higher, LAN. The advanced 2x2 MIMO technology offers rapid access to 4G broadband speeds. AI algorithms and watchdogs ensure the device maintains a constant and reliable connection for a lifetime usage exceeding 80,000 hours.

High Performance & Lightning Speed Mobile Data

The *NetStick/TITAN* + *Ethernet* device supports both FDD and TDD modes of LTE operation and provides up to category 4 data throughput - far exceeding the speeds of existing wired broadband data service and easily satisfying the demands of high-quality HD video and VoIP applications.

Easy and Quick Integration

The USB 2.0 interface supports quick integration with virtually any host and works with different LTE eNodeB systems to enable quick deployment across operator networks. Roaming and hand over support are also available. The *NetStick/TITAN*+ can be connected to any router or device via an ethernet adapter to provide WAN interface, which is archived via an accessory (purchased separately).

Superior Performance

Global Telecom adopted the standard USB form factor design to support advanced 4.5G technologies, such as AMC, HARQ, MIMO, DL & UL CA, and more. Host-less SoC design further reduces cost and power consumption.

Advanced MIMO Technology

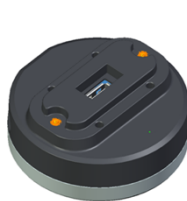
The *NetStick/TITAN*+ supports advanced MIMO technology (up to 2Rx and 1Tx), enabling the product to achieve up to LTE category 4 performance. Global Telecom's industry-leading MIMO technology also extends the coverage area and greatly improves spectrum efficiency.



- USB for simple and reliable interface
- Supports USB 2.0 or higher, Ethernet/WAN interface
- Advanced 4G capabilities with 2x2 MIMO design (Release 9 compliant)
- Multi-band & multi-mode (FDD & TDD) support
- Router & bridge operation mode support
- Full IPv4 & IPv6 and multiple PDN support
- PPT, L2TP and GRE VPN tunneling client support
- Advanced built-in router software & host-less operation
- Http, Https, Telnet, SSH and FOTA management support
- OMA-DM & SIMOTA support
- Secured ManagementTR069

Accessories

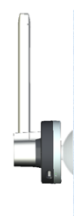
WiFi, USB to Ethernet Cradle



Desktop installation



Wall installation



Window installation

¹ Titan and NetStick are identical in hardware and software. NetStick is ordered through Carriers; TITAN is ordered through wholesale, enterprise, Master Resellers

NetStick/TITAN Specifications

| | |
|---------------------------|--|
| Device Name | NetStick/TITAN |
| Device Model Number | GLU194ST |
| Dimensions | 191mm x 40mm x 40mm |
| Antenna | IPEX-1 Connectors (x2) Gain between 2 to 6 dBi depending on the band |
| Power | USB / 5v1A |
| Weight | 170 g |
| Nominal Power Consumption | 2.5 W |
| Temperature | Operating temperature: -20°C to 55°C Storage temperature: -40°C to 85°C |
| Standard | 3GPP LTE Release 9 |
| Duplex Mode | TDD & FDD with 2Rx / 1Tx Design |
| Frequency | B2 / B4 / B5 / B12 / B25 / B26 / B41 / B71 |
| Bandwidth | 1.4 MHz / 3 MHz / 5 MHz / 10 MHz / 15 MHz / 20 MHz |
| Modulations | DL: QPSK / QAM16 / QAM64 UL: QPSK / QAM16 / QAM64 |
| MIMO | 2x2 MIMO |
| Tx Power | 23dBm ±1dB |
| Networking Interface | USB 2.0 / LAN / WAN supports failover |
| Management | Plug and Play Support (sFOTA, Http, Https, Telnet, SSH, OMA-DM, SIMOTA, TR069) |
| Operating System | Driverless & Host-less Support (Linux, Mac OS, Android, Windows XP, Vista, and Windows 7/8/10) |