

# RØDECASTER PRO™

INTEGRATED PODCAST PRODUCTION CONSOLE

---

OBS MIDICONTROL SETUP GUIDELINES | PC

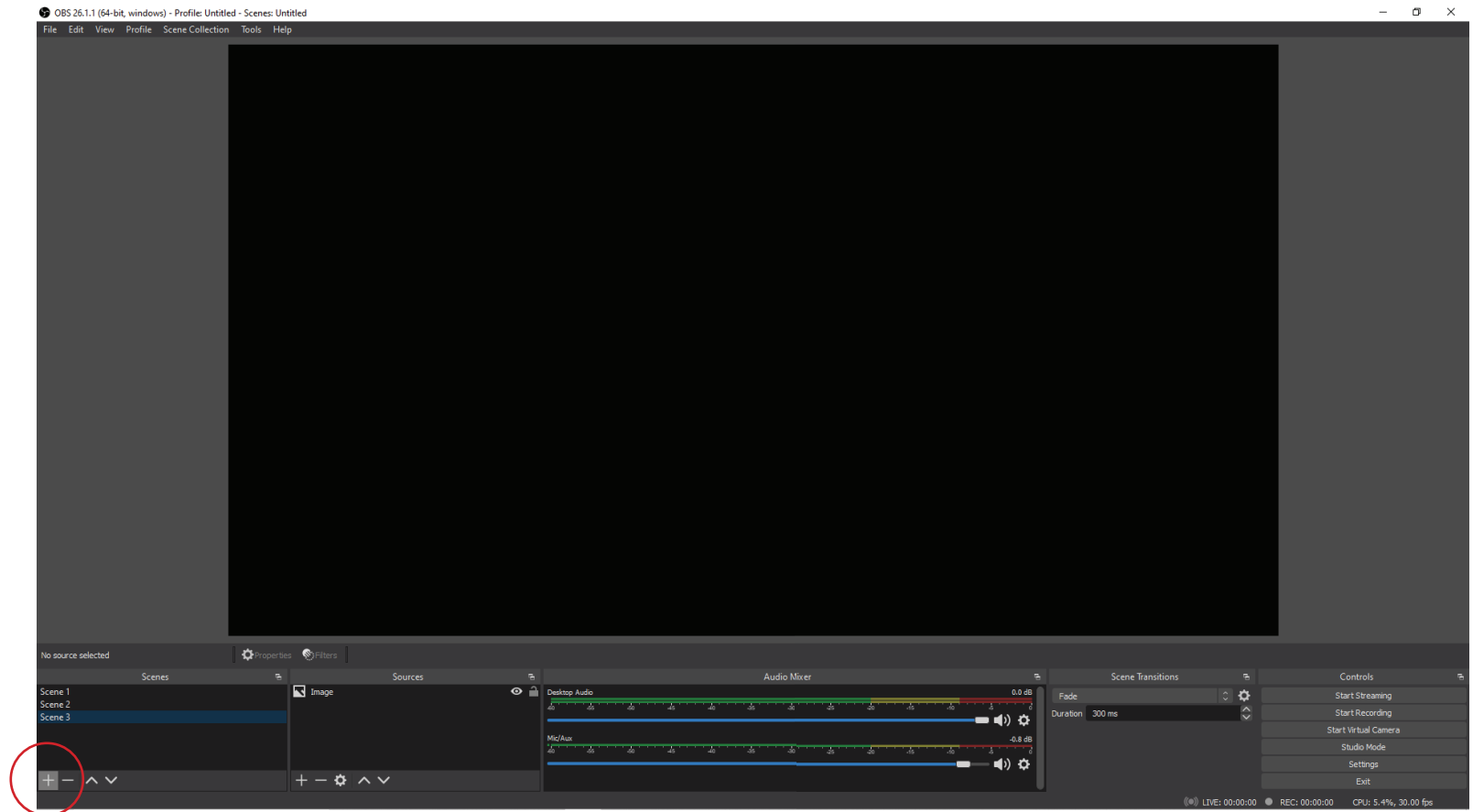
# STEP 1

Enable MIDI Control From your RODECaster Pro settings. To do this, go to: Settings> Advanced> Audio> Operations> MIDI Control



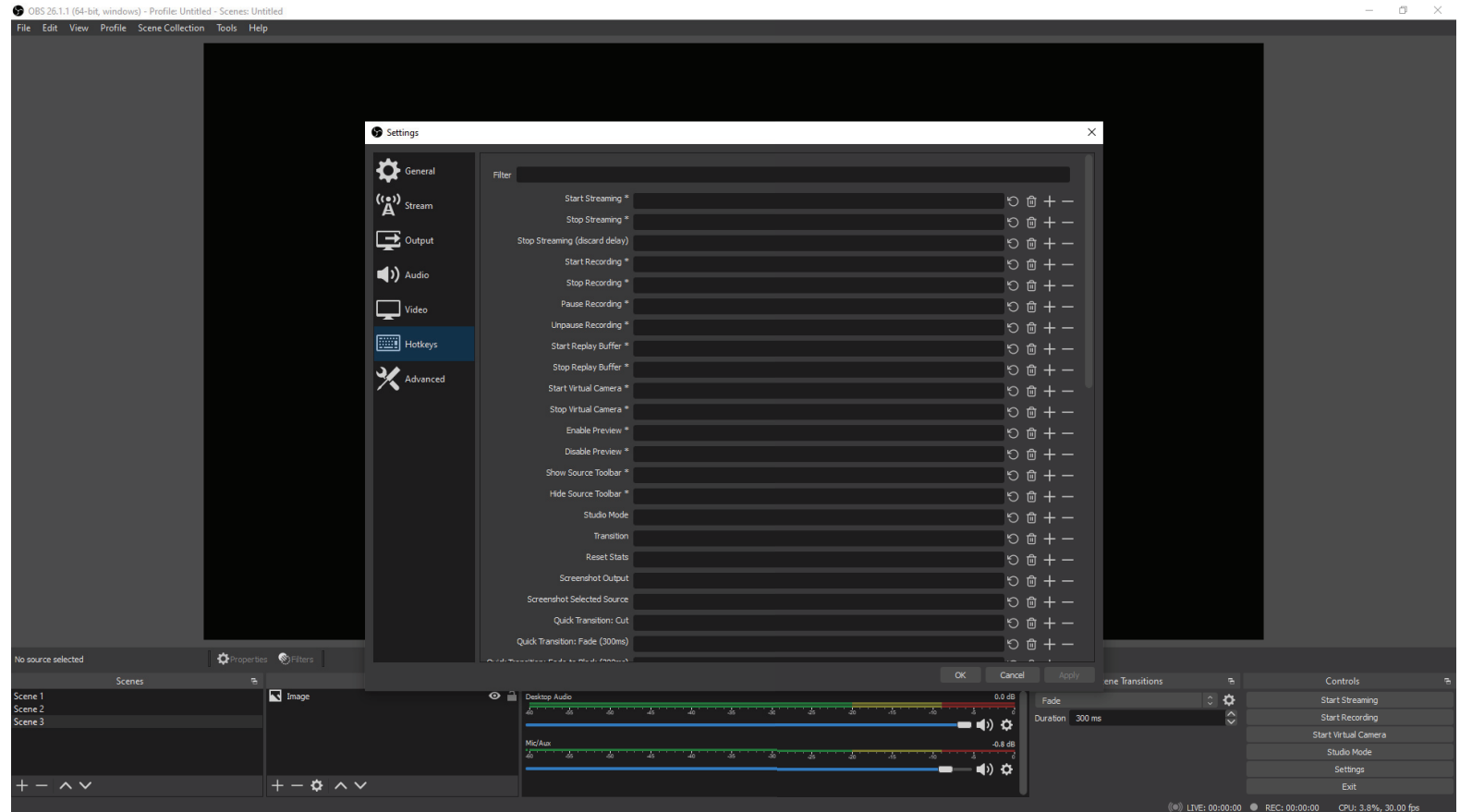
## STEP 2

Open OBS and add however many scenes you require with the '+' button in the bottom left of the 'Scenes' section



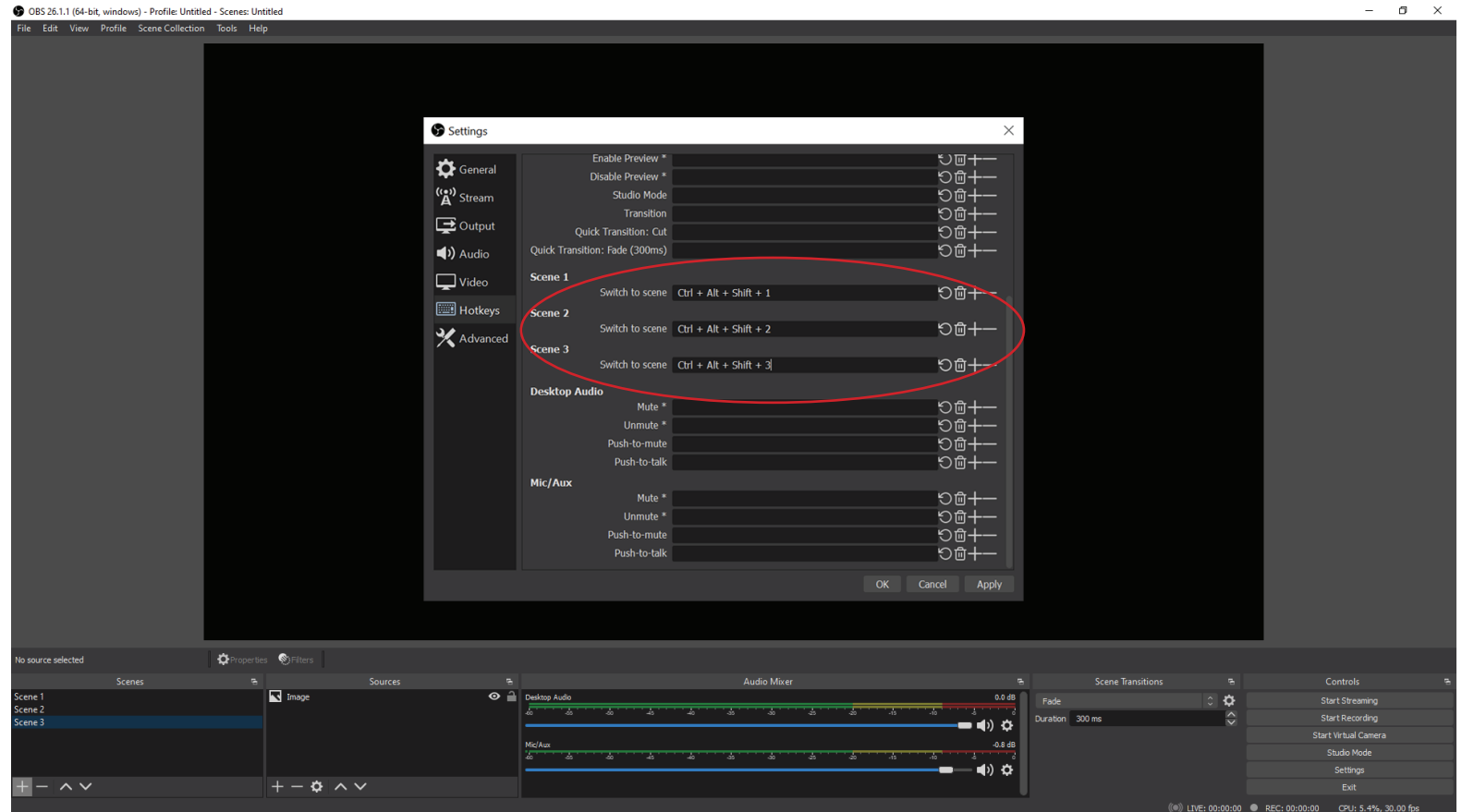
# STEP 3

Navigate to File>  
Settings> Hotkeys



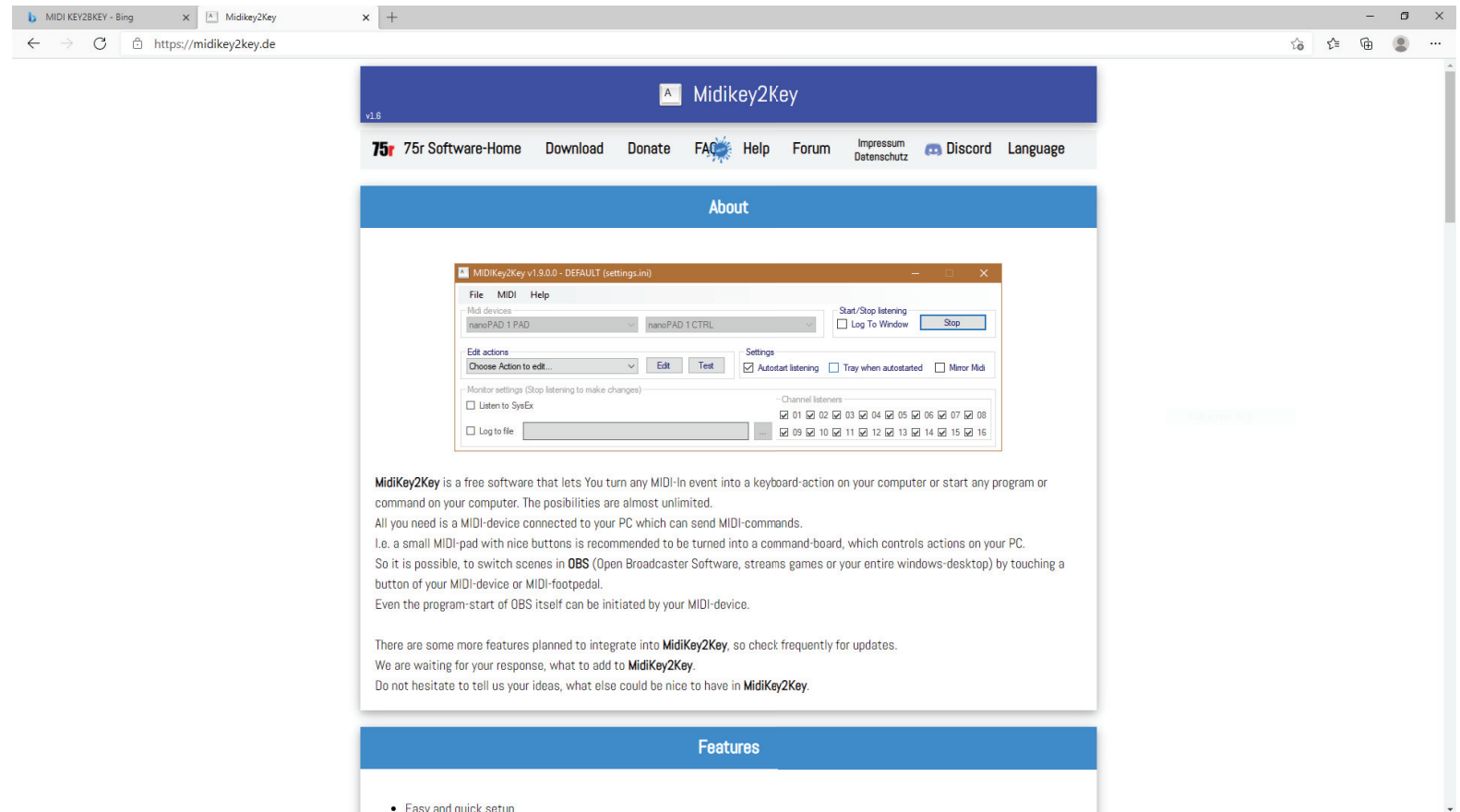
## STEP 4

Create unique hotkey commands for the 'Switch to scene' action for each of your scenes. For example, 'Switch to scene' for Scene 1 could be: Ctrl+Alt+Shift+1, 'Switch to scene' for Scene 2 could be: Ctrl+Alt+Shift+2 etc



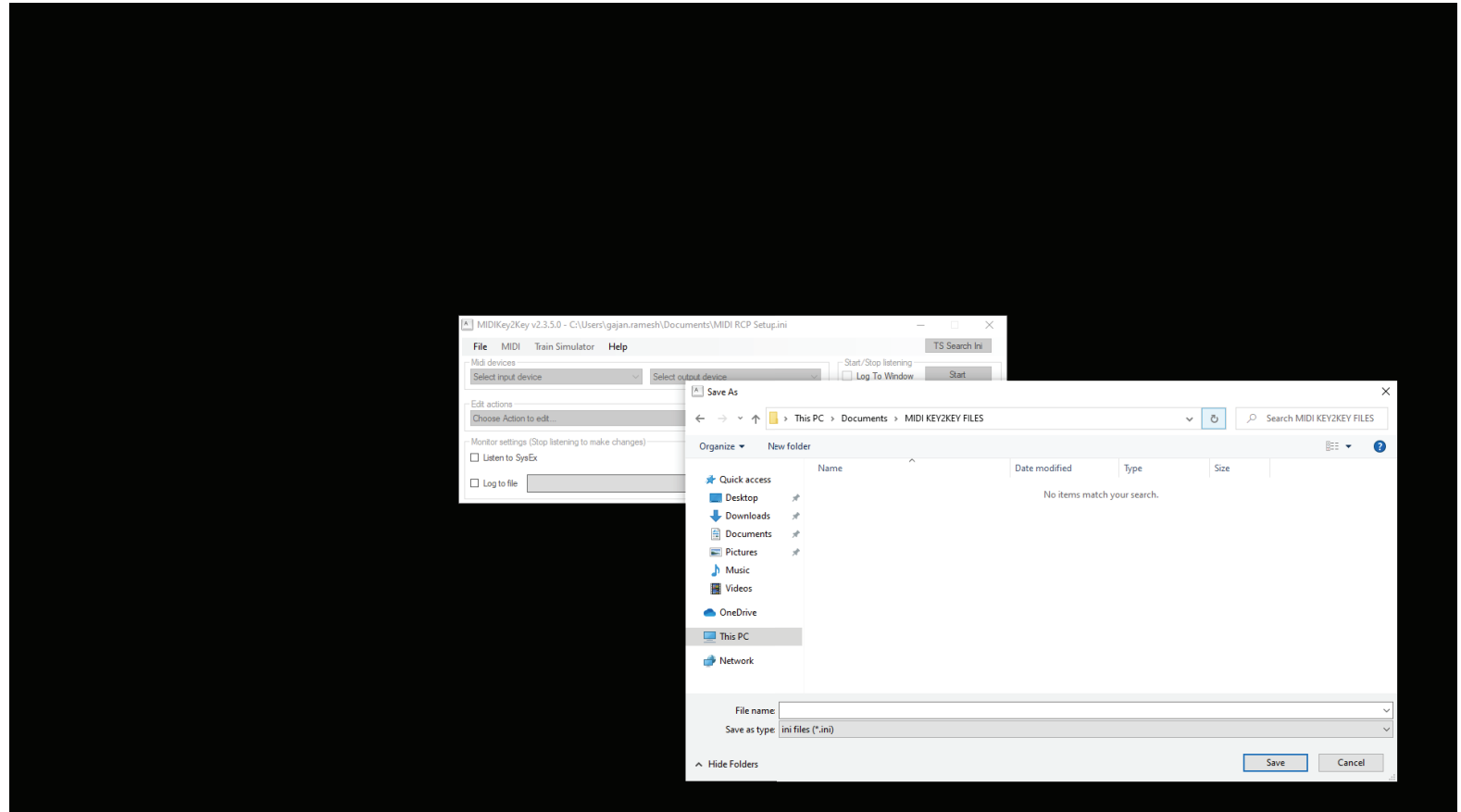
# STEP 5

Download, install and open MIDI Key2Key.  
Use link to download here:  
<https://midikey2key.de/>



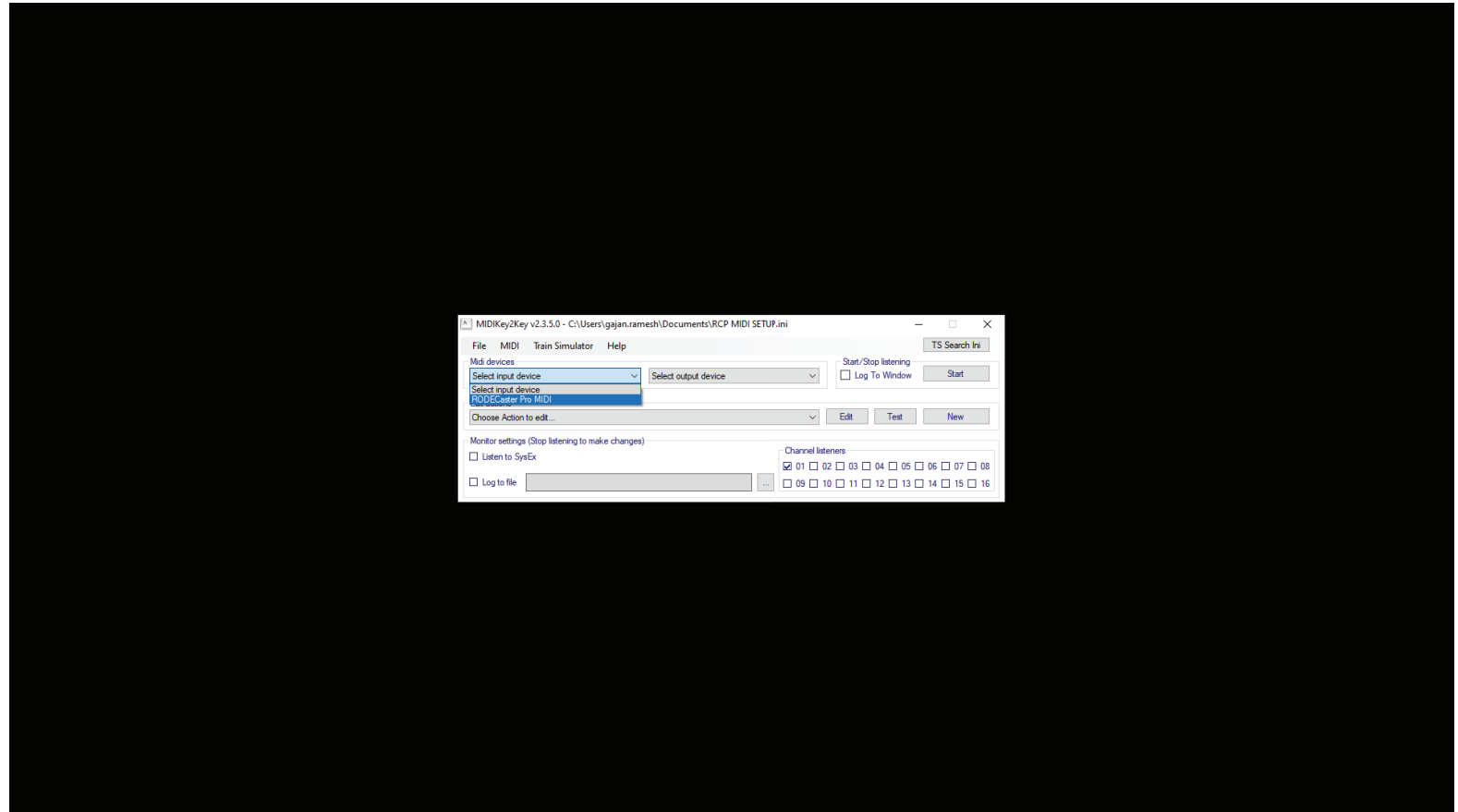
## STEP 6

Open MIDI Key2Key,  
go to File> New and save  
your new MIDI setup



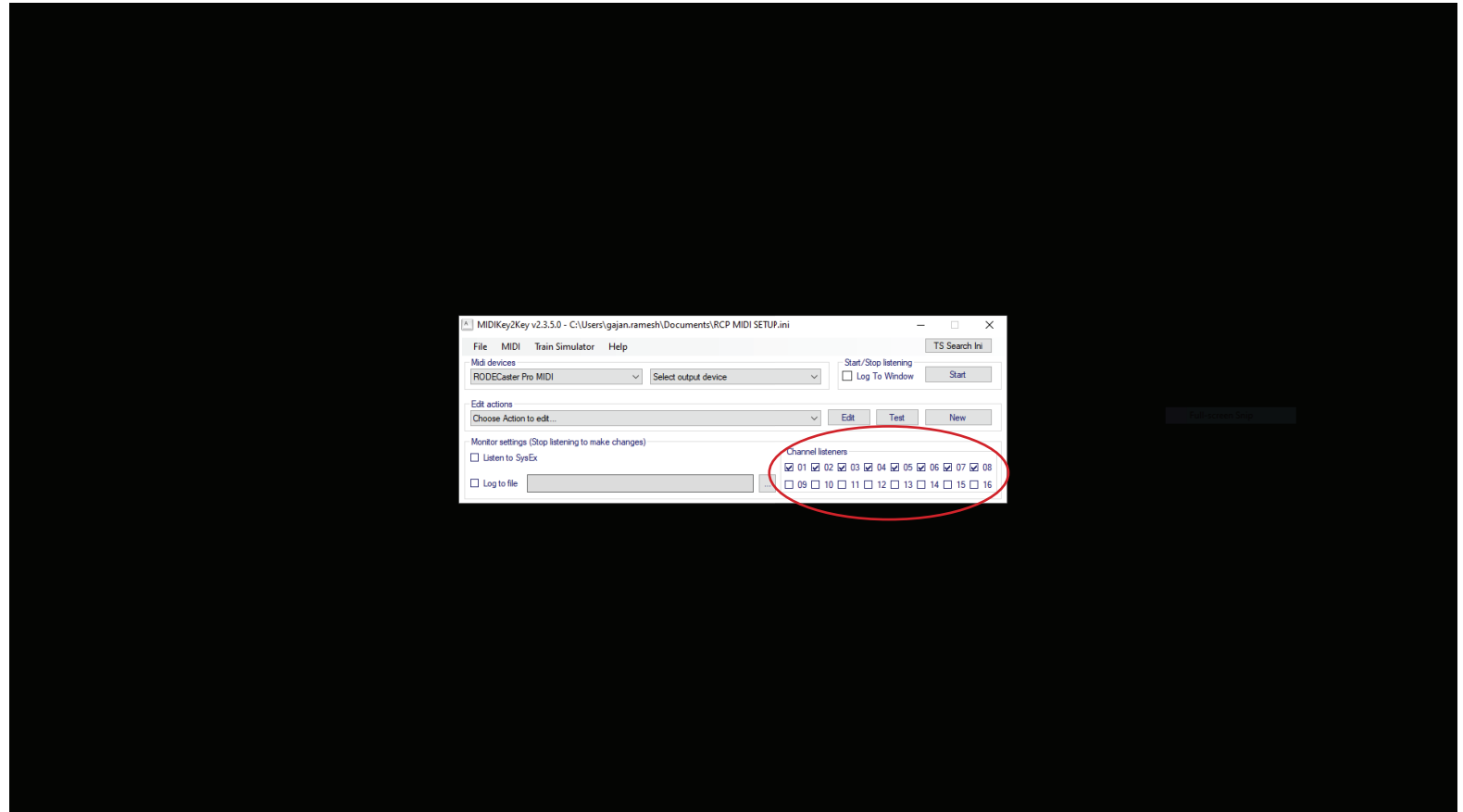
## STEP 7

Under 'MIDI Devices' on the Home screen, select 'RODECaster Pro MIDI' as your input device



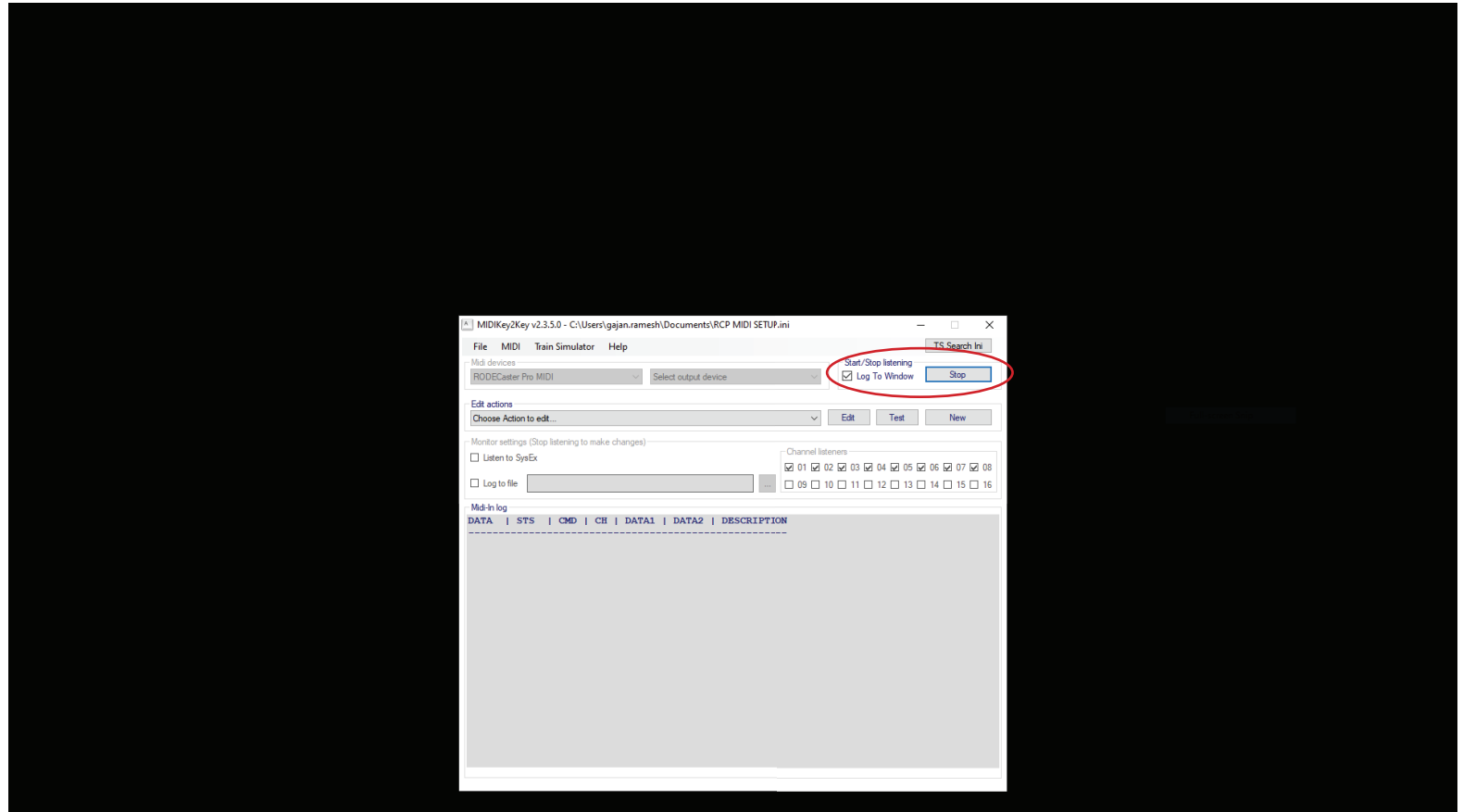
## STEP 8

Under the 'Channel Listeners' section in the bottom right, ensure that boxes 1-8 are checked



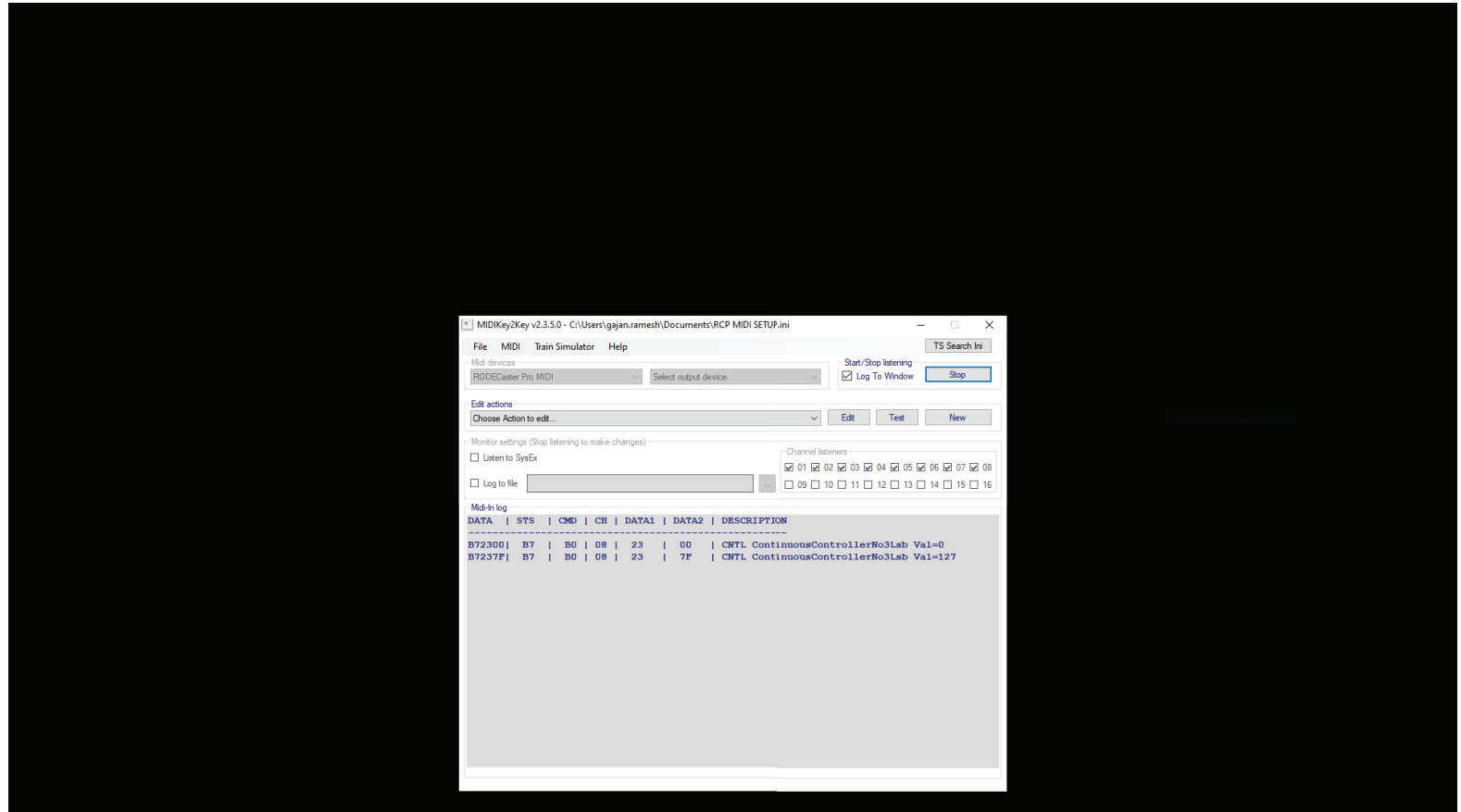
## STEP 9

Under the 'Start/Stop Listening' section, check the 'Log to Window' box and press the 'Start' button



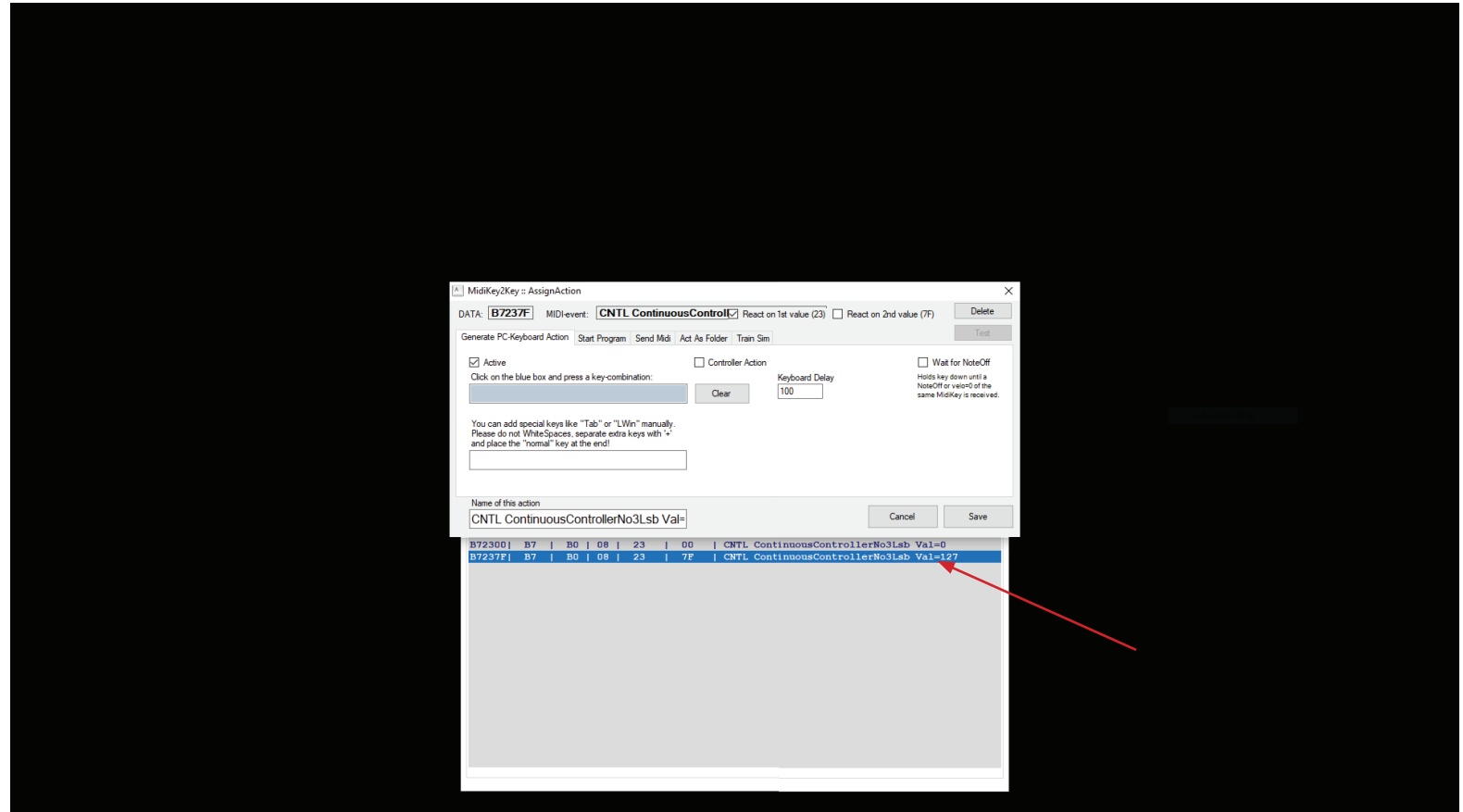
## STEP 10

Press the soundpad on your RODECaster Pro that you would like to control the 'change to Scene 1' action. You should see an action appear in the 'MIDI In-log' window



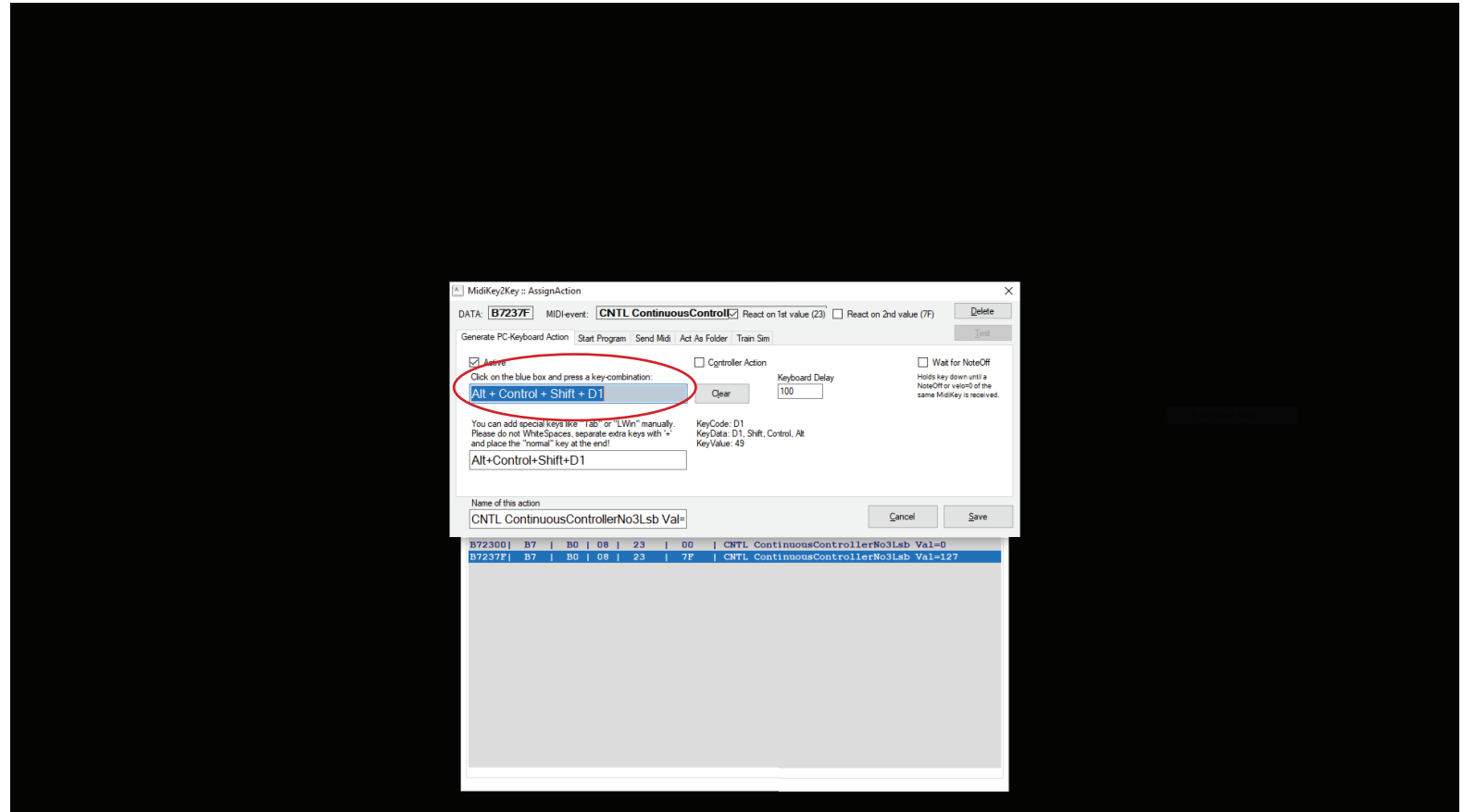
# STEP 11

In the 'MIDI In-log' window, double click on the 'Note On' message (the one ending in "Val=127")



## STEP 12

In the new pop-up window, click on the blue box and press the same key-combination that you used for the 'Switch to Scene' action for the scene you would like to link. For example, if you used Ctrl+Alt+Shift+1 for Scene 1, you would type this here



# STEP 13

Repeat steps 11-13 for your remaining scenes with their matching hot-key combinations

**PRO TIP:** If you would prefer no audio to play when switching scenes, delete the sound on the pads you are using to control your scenes and record a snippet of silence to each. This will enable you to assign them a colour and hit them without firing off audio

