

# ProjectWise® Components Center

Manage, Share, and Access Digital Components Faster

## Reduce Rework with a Better Digital Component Library

As more organizations deepen their adoption of BIM workflows, the volume of new digital components is ever-growing. The ability to effectively manage this added digital content can make a huge difference in whether you thrive or struggle to cope with this explosion of data.

Without a reliable, centralized source of digital components, your teams waste time looking for the right components for each project or recreating ones that already exist. Managing your existing digital components and your expanding library of content can yield big time savings and a lower risk of errors choosing the wrong components. But without the right technology, it can be a tedious and enormously time-consuming manual effort.

ProjectWise Components Center is a ProjectWise 365 digital component management service that provides faster access to, and more consistent use of, catalogs of manufactured digital components. You can quickly access organization and project-specific approved content for use in specific design applications and industries across multidiscipline project teams, while enabling the persistence of components and their associated data across the asset lifecycle.

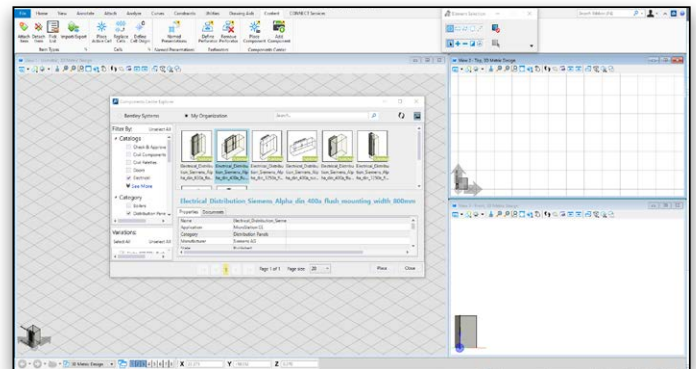
With a common, centralized source of digital components, distributed project teams can ensure consistency and speed the design process. Moreover, you can add any of your own project or organization-specific components to ProjectWise Components Center to build institutional knowledge and provide a centrally managed, ubiquitously accessible source of consistent digital components. This source can be shared and re-used within and across project and organizational boundaries.

## Support All Your Users, Regardless of Design Application

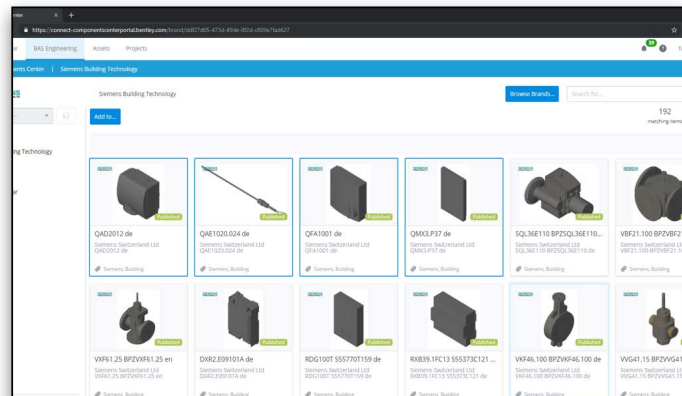
Users of Bentley's open design applications and Autodesk's design applications can directly access Components Center's extensive library of high-quality, information-rich, extensible components from manufacturers within the modeling application. Moreover, to build institutional knowledge, users can publish any of their own project or organization-specific components to Components Center, providing a centrally managed, ubiquitously accessible source of digital components that can be shared and re-used within and across organizational boundaries.

## Simplify Hand-off and Handover

ProjectWise Components Center serves as a persistent repository of project-specific information and documentation related to each component, like specifications, installation, and operations manuals, ultimately reducing the time and effort needed to package the required information during construction and operations. Incorporate any documentation and details that are developed at each phase of the lifecycle to increase the value of the information downstream.



Components can be placed in designs or published to the library directly from within the design application.



Easily manage digital components centrally.

## Access Digital Components Anywhere

As a browser and in-application accessible cloud service, ProjectWise Components Center allows any user to quickly search and access libraries of high-quality, information-rich digital components where they are needed within your design application, which include MicroStation® and Bentley's open applications and Autodesk's Revit and Civil3D applications. The faster you can find what you need, the more quickly you can get projects delivered, with the confidence that you are using the right digital components.

*With a common, centralized source of digital components, distributed project teams can ensure consistency and speed the design process.*

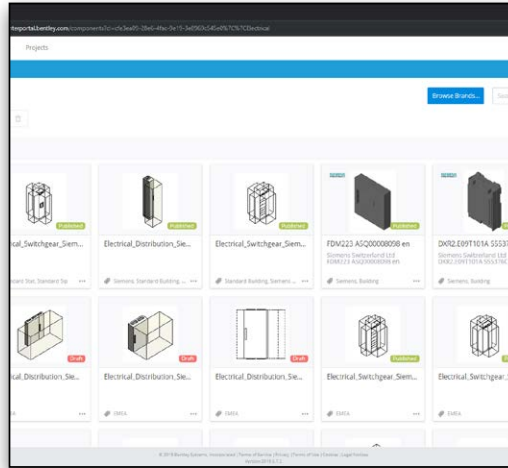
**Find out about Bentley at: [www.bentley.com](http://www.bentley.com)**

**Contact Bentley**  
1-800-BENTLEY (1-800-236-8539)  
Outside the US +1 610-458-5000

**Global Office Listings**  
[www.bentley.com/contact](http://www.bentley.com/contact)

## Manage Digital Components Centrally

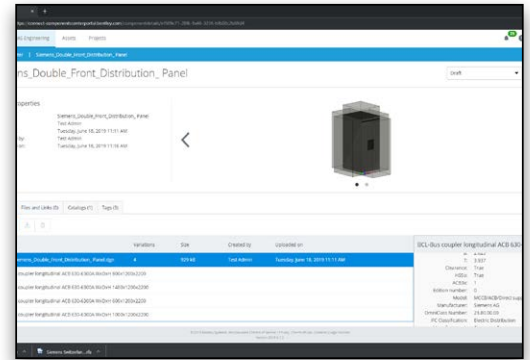
Whether your project teams are working with information-rich digital components in BIM workflows or simple 2D and 3D cells or blocks, you can securely manage and publish cloud-hosted catalogs of approved digital components centrally. Design application users can create or modify components that can be submitted for review and approval before being shared with the organization.



*Manage the review and approval of new content published by project team members.*

## Report on Digital Component Usage

To efficiently manage component libraries, you also need the analytics to fully understand how components are being used and to make decisions about library content. ProjectWise Components Center enables you to track how often components are downloaded and used in designs as well as exactly where they are used.



*Manage property-rich 2D and 3D digital components to improve project quality and simplify project hand-off.*

## Manage Persistent Component Data and Documents

Each component can have associated data and file-based information persistently attached, including things like specifications, drawings, and data sheets. With ProjectWise Components Center, you can maintain persistent metadata and file-based information associated with components for use throughout the asset lifecycle. This can dramatically simplify and speed up the work for hand-off and handover.

## Managing Digital Components Can Be Your Competitive Advantage

With ProjectWise Components Center, you can deliver more consistent, higher quality projects with lower component management costs. You'll be able to provide faster, more consistent use of approved components across your teams. You'll be able to improve the quality of your component library through the use of the best components on each project. And, you will be more confident in your decision making with all the detailed component information your project stakeholders need throughout the lifecycle of an asset, while simplifying hand-off and handover.