



POWER DISTRIBUTION BLOCK SUPPLEMENT

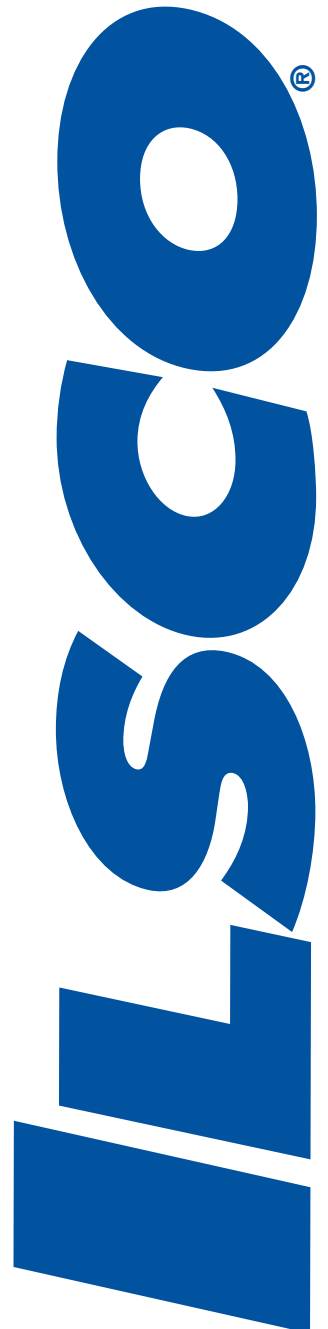


Table of Contents



PDH 1 - 2

PDE 3

PDL 4

LDAU/LDBU 5

PDBU 6 - 8

LDA/LDB 9

PDA/PDC 10

PDB 11 - 16

TYPE PDH

- Features**
- Manufactured from high strength 6061-T6 aluminum alloy
 - UL 1059 Recognized 90° C 600 Volts and is CSA Certified
 - Electro-tin plated
 - High Short Circuit Rating 100K RMS SYM Amps

- Benefits**
- Suitable for use with either copper or aluminum conductors
 - Ensures reliability
 - Provides low contact resistance
 - Added protection

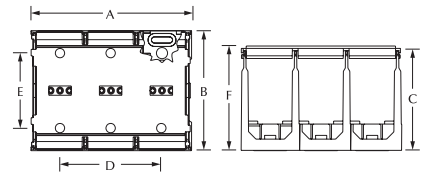
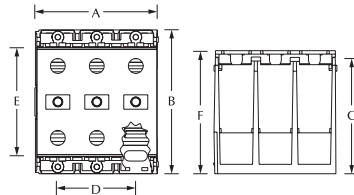
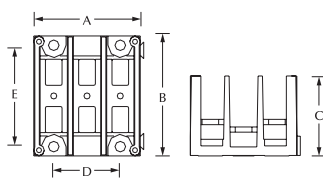


Fig. 1

Fig. 2

Fig. 3

Catalog Number	Fig. No.	Amps	Rated Conductor Range		High SCCR Conditions								SCCR RMS SYM Amps	Volts Max	Dimensions (in.)						Cover ID
					Suitable Conductors Per Pole		Overcurrent Protection Fuse Required Class/Max Amp Rating†								A	B	C	D	E	F	
					Line	Load	J	T	RK1	RK5	G	CC								w/cover	
PDH-11-2-1*	1	115	(1) 2-14	(1) 2-14	(1) 2-6	(1) 2-6	200	200	200	100	60	30	200,000	600	0.83	2.29	1.53	-	1.93	1.60	C-2-1
PDH-11-2-2*	1	115	(1) 2-14	(1) 2-14	(1) 2-6	(1) 2-6	200	200	200	100	60	30	200,000	600	1.46	2.29	1.53	-	1.93	1.60	C-2-2
PDH-11-2-3*	1	115	(1) 2-14	(1) 2-14	(1) 2-6	(1) 2-6	200	200	200	100	60	30	200,000	600	2.10	2.29	1.53	1.27	1.93	1.60	C-2-3
PDH-11-2-4*	1	115	(1) 2-14	(1) 2-14	(1) 2-6	(1) 2-6	200	200	200	100	60	30	200,000	600	2.75	2.29	1.53	1.92	1.93	1.60	C-2-4
PDH-14-2-1*	1	115	(1) 2-14	(4) 10-18	(1) 2-6	(4) 10-14	200	200	200	100	60	30	200,000	600	0.83	2.29	1.53	-	1.93	1.60	C-2-1
PDH-14-2-2*	1	115	(1) 2-14	(4) 10-18	(1) 2-6	(4) 10-14	200	200	200	100	60	30	200,000	600	1.46	2.29	1.53	-	1.93	1.60	C-2-2
PDH-14-2-3*	1	115	(1) 2-14	(4) 10-18	(1) 2-6	(4) 10-14	200	200	200	100	60	30	200,000	600	2.10	2.29	1.53	1.27	1.93	1.60	C-2-3
PDH-14-2-4*	1	115	(1) 2-14	(4) 10-18	(1) 2-6	(4) 10-14	200	200	200	100	60	30	200,000	600	2.75	2.29	1.53	1.92	1.93	1.60	-
PDH-11-2/0-1	2	175	(1) 2/0-14	(1) 2/0-14	(1) 2/0-6	(1) 2/0-6	200	200	200	100	60	30	100,000	600	1.00	3.00	2.42	-	2.25	2.57	-
PDH-11-2/0-2	2	175	(1) 2/0-14	(1) 2/0-14	(1) 2/0-6	(1) 2/0-6	200	200	200	100	60	30	100,000	600	1.82	3.00	2.42	0.81	2.25	2.57	-
PDH-11-2/0-3	2	175	(1) 2/0-14	(1) 2/0-14	(1) 2/0-6	(1) 2/0-6	200	200	200	100	60	30	100,000	600	2.55	3.00	2.42	1.63	2.25	2.57	-
PDH-11-2/0-A	2	175	(1) 2/0-14	(1) 2/0-14	(1) 2/0-6	(1) 2/0-6	200	200	200	100	60	30	100,000	600	0.89	3.00	2.42	-	2.25	-	-
PDH-14-2/0-1	2	175	(1) 2/0-14	(4) 4-14	(1) 2/0-6	(4) 4-14	200	200	200	100	60	30	100,000	600	1.00	3.00	2.42	-	2.25	2.57	-
PDH-14-2/0-2	2	175	(1) 2/0-14	(4) 4-14	(1) 2/0-6	(4) 4-14	200	200	200	100	60	30	100,000	600	1.82	3.00	2.42	0.81	2.25	2.57	-
PDH-14-2/0-3	2	175	(1) 2/0-14	(4) 4-14	(1) 2/0-6	(4) 4-14	200	200	200	100	60	30	100,000	600	2.55	3.00	2.42	1.63	2.25	2.57	-
PDH-14-2/0-A	2	175	(1) 2/0-14	(4) 4-14	(1) 2/0-6	(4) 4-14	200	200	200	100	60	30	100,000	600	0.89	3.00	2.42	-	2.25	-	-
PDH-12-350-1	3	310	(1) 350-6	(2) 2/0-14	(1) 350-3/0	(1) 2/0-1	600	600	400	200	60	30	100,000	600	1.96	4.00	3.49	-	3.38	3.49	-
PDH-12-350-2	3	310	(1) 350-6	(2) 2/0-14	(1) 350-3/0	(1) 2/0-1	600	600	400	200	60	30	100,000	600	3.66	4.00	3.49	1.70	3.38	3.49	-
PDH-12-350-3	3	310	(1) 350-6	(2) 2/0-14	(1) 350-3/0	(1) 2/0-1	600	600	400	200	60	30	100,000	600	5.36	4.00	3.49	3.40	3.38	3.49	-
PDH-14-400-1	3	335	(1) 400-6	(4) 2-14	(1) 400-3/0	(4) 2-8	400	400	400	100	60	30	100,000	600	1.96	4.00	3.49	-	3.38	3.49	-
PDH-14-400-2	3	335	(1) 400-6	(4) 2-14	(1) 400-3/0	(4) 2-8	400	400	400	100	60	30	100,000	600	3.66	4.00	3.49	1.70	3.38	3.49	-
PDH-14-400-3	3	335	(1) 400-6	(4) 2-14	(1) 400-3/0	(4) 2-8	400	400	400	100	60	30	100,000	600	5.36	4.00	3.49	3.40	3.38	3.49	-
PDH-26-2/0-1	3	350	(2) 2/0-14	(6) 4-14	(1) 2/0-2	(6) 4-8	400	400	400	100	60	30	100,000	600	1.96	4.00	3.49	-	3.38	3.49	-
PDH-26-2/0-2	3	350	(2) 2/0-14	(6) 4-14	(1) 2/0-2	(6) 4-8	400	400	400	100	60	30	100,000	600	3.66	4.00	3.49	1.70	3.38	3.49	-
PDH-26-2/0-3	3	350	(2) 2/0-14	(6) 4-14	(1) 2/0-2	(6) 4-8	400	400	400	100	60	30	100,000	600	5.36	4.00	3.49	3.40	3.38	3.49	-
PDH-14A-500-1	3	380	(1) 500-4	(3) 2-14 (1) 350-6	(1) 500-3/0	(4) 350-6	600	600	400	200	60	30	100,000	600	1.96	4.00	3.49	-	3.38	3.49	-
PDH-14A-500-2	3	380	(1) 500-4	(3) 2-14 (1) 350-6	(1) 500-3/0	(4) 350-6	600	600	400	200	60	30	100,000	600	3.66	4.00	3.49	1.70	3.38	3.49	-
PDH-14A-500-3	3	380	(1) 500-4	(3) 2-14 (1) 350-6	(1) 500-3/0	(4) 350-6	600	600	400	200	60	30	100,000	600	5.36	4.00	3.49	3.40	3.38	3.49	-
PDH-11-600-1	3	420	(1) 600-2	(1) 600-2	(1) 600-2	(1) 600-2	400	400	400	200	60	30	100,000	600	1.96	4.00	3.49	-	3.38	3.49	-
PDH-11-600-2	3	420	(1) 600-2	(1) 600-2	(1) 600-2	(1) 600-2	400	400	400	200	60	30	100,000	600	3.66	4.00	3.49	1.70	3.38	3.49	-
PDH-11-600-3	3	420	(1) 600-2	(1) 600-2	(1) 600-2	(1) 600-2	400	400	400	200	60	30	100,000	600	5.36	4.00	3.49	3.40	3.38	3.49	-

* Cover not standard, available as an option.

† For further details on conductors, fuse ratings, and additional SCCR ratings please refer to product data sheets.

TYPE
PDH

Features

- Manufactured from high strength 6061-T6 aluminum alloy
- UL 1059 Recognized 90° C 600 Volts and is CSA Certified
- Electro-tin plated
- High Short Circuit Rating 100K RMS SYM Amps

Benefits

- Suitable for use with either copper or aluminum conductors
- Ensures reliability
- Provides low contact resistance
- Added protection

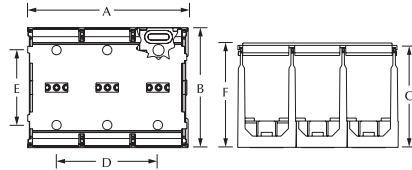


Fig. 3

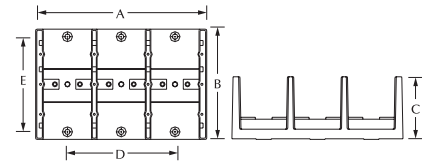


Fig. 4

Catalog Number	Fig. No.	Amps	Rated Conductor Range		High SCCR Conditions									SCCR RMS SYM Amps	Volts Max	Dimensions (in.)						Cover ID
					Suitable Conductors Per Pole		Overcurrent Protection Fuse Required Class/Max Amp Rating†						A			B	C	D	E	F w/cover		
			Line	Load	Line	Load	J	T	RK1	RK5	G	CC										
PDH-18-600-1	3	420	(1) 600-2	(8) 2-14	(1) 600-3/0	(8) 2-8	400	400	400	200	60	30	100,000	600	1.96	4.00	3.49	-	3.38	3.49	-	
PDH-18-600-2	3	420	(1) 600-2	(8) 2-14	(1) 600-3/0	(8) 2-8	400	400	400	200	60	30	100,000	600	3.66	4.00	3.49	1.70	3.38	3.49	-	
PDH-18-600-3	3	420	(1) 600-2	(8) 2-14	(1) 600-3/0	(8) 2-8	400	400	400	200	60	30	100,000	600	5.36	4.00	3.49	3.40	3.38	3.49	-	
PDH-112-600-1	3	420	(1) 600-2	(12) 4-14	(1) 600-3/0	(12) 4-8	600	600	400	200	60	30	100,000	600	1.96	4.00	3.49	-	3.38	3.49	-	
PDH-112-600-2	3	420	(1) 600-2	(12) 4-14	(1) 600-3/0	(12) 4-8	600	600	400	200	60	30	100,000	600	3.66	4.00	3.49	1.70	3.38	3.49	-	
PDH-112-600-3	3	420	(1) 600-2	(12) 4-14	(1) 600-3/0	(12) 4-8	600	600	400	200	60	30	100,000	600	5.36	4.00	3.49	3.40	3.38	3.49	-	
PDH-19A-600-1	3	420	(1) 600-2	(6) 2-14 (3) 1/0-14	(1) 600-3/0	(9) 1/0-8	600	600	400	200	60	30	100,000	600	1.96	4.00	3.49	-	3.38	3.49	-	
PDH-19A-600-2	3	420	(1) 600-2	(6) 2-14 (3) 1/0-14	(1) 600-3/0	(9) 1/0-8	600	600	400	200	60	30	100,000	600	3.66	4.00	3.49	1.70	3.38	3.49	-	
PDH-19A-600-3	3	420	(1) 600-2	(6) 2-14 (3) 1/0-14	(1) 600-3/0	(9) 1/0-8	600	600	400	200	60	30	100,000	600	5.36	4.00	3.49	3.40	3.38	3.49	-	
PDH-22-250-1	3	510	(2) 250-1/0	(2) 250-1/0	(2) 250-1/0	(2) 250-1/0	600	600	400	200	60	30	100,000	600	1.96	4.00	3.49	-	3.38	3.49	-	
PDH-22-250-2	3	510	(2) 250-1/0	(2) 250-1/0	(2) 250-1/0	(2) 250-1/0	600	600	400	200	60	30	100,000	600	3.66	4.00	3.49	1.70	3.38	3.49	-	
PDH-22-250-3	3	510	(2) 250-1/0	(2) 250-1/0	(2) 250-1/0	(2) 250-1/0	600	600	400	200	60	30	100,000	600	5.36	4.00	3.49	3.40	3.38	3.49	-	
PDH-28-250-1	3	510	(2) 250-1/0	(8) 2-14	(2) 250-1/0	(8) 2-14	600	600	600	200	60	30	100,000	600	1.96	4.00	3.49	-	3.38	3.49	-	
PDH-28-250-2	3	510	(2) 250-1/0	(8) 2-14	(2) 250-1/0	(8) 2-14	600	600	600	200	60	30	100,000	600	3.66	4.00	3.49	1.70	3.38	3.49	-	
PDH-28-250-3	3	510	(2) 250-1/0	(8) 2-14	(2) 250-1/0	(8) 2-14	600	600	600	200	60	30	100,000	600	5.36	4.00	3.49	3.40	3.38	3.49	-	
PDH-212-250-1	3	510	(2) 250-1/0	(12) 4-14	(2) 250-1/0	(12) 4-14	600	600	600	200	60	30	100,000	600	1.96	4.00	3.49	-	3.38	3.49	-	
PDH-212-250-2	3	510	(2) 250-1/0	(12) 4-14	(2) 250-1/0	(12) 4-14	600	600	600	200	60	30	100,000	600	3.66	4.00	3.49	1.70	3.38	3.49	-	
PDH-212-250-3	3	510	(2) 250-1/0	(12) 4-14	(2) 250-1/0	(12) 4-14	600	600	600	200	60	30	100,000	600	5.36	4.00	3.49	3.40	3.38	3.49	-	
PDH-22-350-1*	4	620	(2) 350-4	(2) 350-4	(2) 350-4	(2) 350-4	450	450	400	200	60	30	100,000	600	3.17	5.50	3.12	-	4.75	3.18	C-6-1	
PDH-22-350-2*	4	620	(2) 350-4	(2) 350-4	(2) 350-4	(2) 350-4	450	450	400	200	60	30	100,000	600	5.85	5.50	3.12	2.69	4.75	3.18	C-6-2	
PDH-22-350-3*	4	620	(2) 350-4	(2) 350-4	(2) 350-4	(2) 350-4	450	450	400	200	60	30	100,000	600	8.54	5.50	3.12	5.38	4.75	3.18	C-6-3	
PDH-22-500-1*	4	760	(2) 500-4	(2) 500-4	(2) 500-4	(2) 500-4	600	600	400	200	60	30	100,000	600	3.17	5.50	3.12	-	4.75	3.18	C-6-1	
PDH-22-500-2*	4	760	(2) 500-4	(2) 500-4	(2) 500-4	(2) 500-4	600	600	400	200	60	30	100,000	600	5.85	5.50	3.12	2.69	4.75	3.18	C-6-2	
PDH-22-500-3*	4	760	(2) 500-4	(2) 500-4	(2) 500-4	(2) 500-4	600	600	400	200	60	30	100,000	600	8.54	5.50	3.12	5.38	4.75	3.18	C-6-3	
PDH-28-500-1*	4	760	(2) 500-6	(8) 2/0-14	(2) 500-250	(8) 2/0-14	600	600	400	200	60	30	100,000	600	3.17	5.50	3.12	-	4.75	3.18	C-6-1	
PDH-28-500-2*	4	760	(2) 500-6	(8) 2/0-14	(2) 500-250	(8) 2/0-14	600	600	400	200	60	30	100,000	600	5.85	5.50	3.12	2.69	4.75	3.18	C-6-2	
PDH-28-500-3*	4	760	(2) 500-6	(8) 2/0-14	(2) 500-250	(8) 2/0-14	600	600	400	200	60	30	100,000	600	8.54	5.50	3.12	5.38	4.75	3.18	C-6-3	
PDH-212-500-1*	4	760	(2) 500-6	(12) 4-14	(2) 500-250	(12) 4-8	400	400	400	200	60	30	100,000	600	3.17	5.50	3.12	-	4.75	3.18	C-6-1	
PDH-212-500-2*	4	760	(2) 500-6	(12) 4-14	(2) 500-250	(12) 4-8	400	400	400	200	60	30	100,000	600	5.85	5.50	3.12	2.69	4.75	3.18	C-6-2	
PDH-212-500-3*	4	760	(2) 500-6	(12) 4-14	(2) 500-250	(12) 4-8	400	400	400	200	60	30	100,000	600	8.54	5.50	3.12	5.38	4.75	3.18	C-6-3	

* Cover not standard, available as an option.

† For further details on conductors, fuse ratings, and additional SCCR ratings please refer to product data sheets.

TYPE PDE

Features

- Manufactured from high strength 6061-T6 aluminum alloy
- UL Listed and is CSA Certified
- Electro-tin plated
- High Short Circuit Rating 100K RMS SYM Amps

Benefits

- Suitable for use with either copper or aluminum conductors
- Ensures reliability
- Provides low contact resistance
- Added protection



Catalog Number	Amps (CU Wire)	Rated Conductor Range		High SCCR Conditions								SCCR RMS SYM Amps	Volts Max	Dimensions (in.)				
				Suitable Conductors Per Pole		Overcurrent Protection Fuse Required Class/Max Amp Rating								A	B	C	D	E
				Line	Load	Line	Load	J	T	RK1	RK5							
PDE-11-3/0	200	(1) 3/0-14	(1) 3/0-14	(1) 3/0-8	(1) 3/0-8	225	225	200	60	60	30	100,000	600	1.20	3.61	2.71	.56	3.00
PDE-11-3/0-CU	200	(1) 3/0-14	(1) 3/0-14	(1) 3/0-8	(1) 3/0-8	225	225	200	60	60	30	100,000	600	1.20	3.61	2.71	.56	3.00
PDE-14-3/0	200	(1) 3/0-14	(4) 2-14	(1) 3/0-8	(4) 2-14	225	225	200	60	60	30	100,000	600	1.20	3.61	2.71	.56	3.00
PDE-14-3/0-CU	200	(1) 3/0-14	(4) 2-14	(1) 3/0-8	(4) 2-14	225	225	200	60	60	30	100,000	600	1.20	3.61	2.71	.56	3.00
PDE-18-400†	335	(1) 400-6	(8) 2-16 (1) 2/0-14	(1) 400-3/0	(8) 2-8	400	400	400	200	60	30	100,000	600	2.27	4.39	3.14	1.11	3.75
PDE-18-400-CU†	335	(1) 400-6	(8) 2-16 (1) 2/0-14	(1) 400-3/0 (1) 2/0-14	(8) 2-8	400	400	400	200	60	30	100,000	600	2.27	4.39	3.14	1.11	3.75
PDE-22-250†	510	(2) 250-6	(2) 250-6	(2) 250-1/0	(2) 250-1/0	400	400	400	200	60	30	100,000	600	2.27	4.39	3.14	1.11	3.75
PDE-22-250-CU†	510	(2) 250-6	(2) 250-6	(2) 250-1/0	(2) 250-1/0	400	400	400	200	60	30	100,000	600	2.27	4.39	3.14	1.11	3.75

All PDE blocks are single pole and snap together for 2 and 3 pole configurations

† For further details on conductors, fuse ratings, and additional SCCR ratings please refer to product data sheets.

‡ UL Recognized.

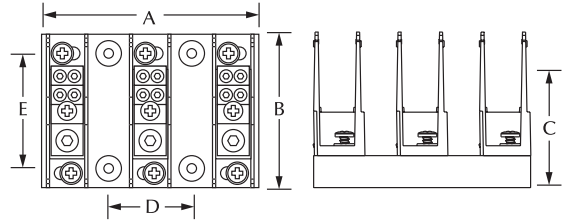
TYPE PDL

Features

- Manufactured from high strength 6061-T6 aluminum alloy
- UL Listed and is CSA Certified
- Electro-tin plated
- High Short Circuit Rating 100K RMS SYM Amps

Benefits

- Suitable for use with either copper or aluminum conductors
- Ensures reliability
- Provides low contact resistance
- Added protection



Catalog Number	Amps (CU Wire)	Rated Conductor Range		High SCCR Conditions								SCCR RMS SYM Amps	Volts Max	Dimensions (in.)				
				Suitable Conductors Per Pole		Overcurrent Protection Fuse Required Class/Max Amp Rating								A	B	C	D	E
				Line	Load	J	T	RK1	RK5	G	CC							
PDL-11-2/0-3	175	(1) 2/0-14	(1) 2/0-14	(1) 2/0-6	(1) 2/0-6	200	200	200	100	60	30	100,000	600	4.25	3.00	3.05	1.63	2.25
PDL-14-2/0-3	175	(1) 2/0-14	(4) 4-14	(1) 2/0-6	(4) 4-14	200	200	200	100	60	30	100,000	600	4.25	3.00	3.05	1.63	2.25
PDL-16-2/0-3	175	(1) 2/0-14	(6) 4-14	(1) 2/0-6	(6) 4-14	200	200	200	100	60	30	100,000	600	4.25	3.00	3.05	1.63	2.25
PDL-16-400-3	335	(1) 400-6	(6) 2-14	(1) 400-3/0	(6) 2-8	400	400	400	100	60	30	100,000	600	6.00	5.50	3.96	3.25	4.75
PDL-112-600-3	335	(1) 600-2	(12) 4-14	(1) 600-3/0	(12) 4-8	600	600	400	200	60	30	100,000	600	6.00	5.50	3.96	3.25	4.75
PDL-19A-600-3	335	(1) 600-2	(3) 1/0-14 (6) 2-14	(1) 600-3/0	(9) 1/0-8	600	600	400	200	60	30	100,000	600	6.00	5.50	3.96	3.25	4.75

PDL Distribution Blocks are also UL listed with high SCCR ratings with certain Circuit Breaker Combinations - consult factory.

† For further details on conductors, fuse ratings, and additional SCCR ratings please refer to product data sheets.

TYPE

LDAU

LDBU

Features

- Modular design
- Easy to assemble
- UL listed 90° C 600 Volts
- Electro-tin plated 6061-T6 aluminum alloy
- Multiple conductor capability

Benefits

- Simplifies stocking. Combines any number of blocks with multiple conductor ranges into the specific configuration required for the job.
- Unique locking feature allows individual blocks to be combined quickly without special tools
- Ensures reliability
- Suitable for use with both copper and aluminum conductors in any combination
- Individual blocks supplied in a variety of configurations with one or two main cable ports and four, six, or twelve taps. All are range taking.



Fig. 1

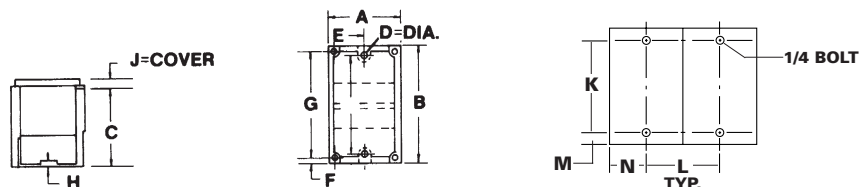


Fig. 2

Catalog Number	Figure Number	Connector		Primary			Secondary			Ampere
		Primary	Secondary	Wire Range	Openings Per Pole	Hex Size	Wire Range	Openings Per Pole	Hex Size	Rating Per Pole
LDBU-112-350	1			350kcmil-6	1	3/8	4-14	12	Slot	310
LDAU-112-350	2			350kcmil-6	1	3/8	4-14	12	Slot	310
LDBU-112A-350	1			350kcmil-6	1	3/8	4-14	12	Slot	310
LDAU-112A-350	2			350kcmil-6	1	3/8	4-14	12	Slot	310
LDBU-16-350	1			350kcmil-6	1	3/8	2/0-14	6	3/16	310
LDAU-16-350	2			350kcmil-6	1	3/8	2/0-14	6	3/16	310
LDBU-16-500	1			500kcmil-4	1	3/8	2/0-14	6	3/16	380
LDAU-16-500	2			500kcmil-4	1	3/8	2/0-14	6	3/16	380
LDBU-26-350	1			350kcmil-6	2	3/8	2/0-14	6	3/16	620
LDAU-26-350	2			350kcmil-6	2	3/8	2/0-14	6	3/16	620
LDBU-212-4/0	1			4/0-6	2	1/4	4-14	12	Slot	460
LDAU-212-4/0	2			4/0-6	2	1/4	4-14	12	Slot	460
LDBU-212-500	1			500kcmil-4	2	3/8	4-14	12	Slot	760
LDAU-212-500	2			500kcmil-4	2	3/8	4-14	12	Slot	760
LDBU-26-500	1			500kcmil-4	2	3/8	2/0-14	6	3/16	760
LDAU-26-500	2			500kcmil-4	2	3/8	2/0-14	6	3/16	760
LDBU-24-500	1			500kcmil-4	2	3/8	4/0-6	4	5/16	760
LDAU-24-500	2			500kcmil-4	2	3/8	4/0-6	4	5/16	760
LDBU-11-500	1			500kcmil-4	1	3/8	500kcmil-4	1	3/8	380
LDAU-11-500	2			500kcmil-4	1	3/8	500kcmil-4	1	3/8	380
LDBU-22-350	1			350kcmil-6	2	3/8	350kcmil-6	2	3/8	620
LDAU-22-350	2			350kcmil-6	2	3/8	350kcmil-6	2	3/8	620
LDBU-22-500	1			500kcmil-4	2	3/8	500kcmil-4	2	3/8	760
LDAU-22-500	2			500kcmil-4	2	3/8	500kcmil-4	2	3/8	760

Side Panel can be ordered separately Cat. No. LDS-1

Tested to UL 1953, UL File E112158



Dimensions

A	B	C	D=Dia.	E	F	G	H	J = Cover	K	L	M	N
3	5-1/2	3-7/16	.28 Slot	1-1/2	5/16	4-7/8	1/4	1/2	4.75	2.69	.38	1.50

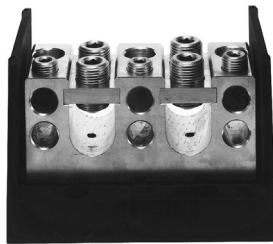
TYPE PDBU

Features

- Lay-In primary cable ports
- Valox insulating base
- UL 1953 Listed for 600 volts
- Electro-tin plated
- Manufactured from high strength 6061-T6 aluminum alloy

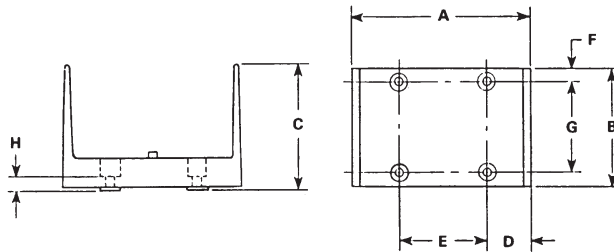
Benefits

- Designed for feed through of two primary conductors and up to six taps with no need to break the main feeder cable
- Provides a high degree of impact resistance with superior insulating qualities
- Ensures reliability
- Provides low contact resistance
- Suitable for use with either copper or aluminum conductors



Catalog Number	Connector		Primary		Secondary		Ampere Rating Per Pole	Number Of Poles	Hex Size	
	Primary	Secondary	Wire Range	Openings Per Pole	Wire Range	Openings Per Pole			Primary	Secondary
	PDBU-26-750-1			750kcmil-250kcmil	2	250kcmil-6			6	950

Tested to UL 1953, UL File E112158



Block Size	No. of Poles	Dimensions							
		A	B	C	D	E	F	G	H
W	1	6-7/32	4	4-3/8	1-19/32	3	3/8	3-1/4	7/16

* Valox® is a registered trade name of the General Electric Company.

TYPE PDBU

Features

- Manufactured from high strength 6061-T6 aluminum alloy
- Valox* insulating base
- UL 1953 Listed 90° C 600 volts
- Electro-tin plated

Benefits

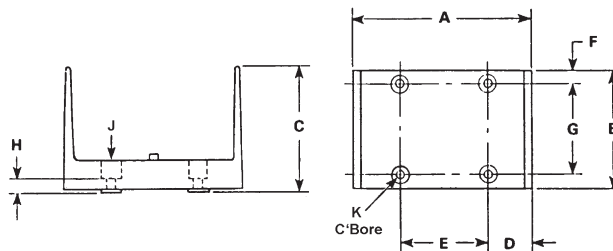
- Reliable use for copper conductor only
- Provides a high degree of impact resistance with superior insulating qualities
- Ensures reliability
- Provides low contact resistance



Catalog Number	Connector		Primary		Secondary		Ampere Rating Per Pole	Number Of Poles	Block Size	Hex Size	
	Primary	Secondary	Wire Range	Openings Per Pole	Wire Range	Openings Per Pole				Primary	Secondary

Valox® is a registered trade name of the General Electric Company.
A versatile tap hole, wire range 8-14 AWG included on the connector.

Tested to UL 1953, UL File E112158



Block Size	No. of Poles	Dimensions									
		A	B	C	D	E	F	G	H	J	K
W	1	6-7/32	4	4-3/8	1-19/32	3	3/8	3-1/4	7/16	9/32	9/16

ILSCO Power Distribution Blocks - Dual Rated



TYPE PDBU

Features

- Multiple taps
- Valox® insulating base
- UL 1953 Listed 90° C 600 Volts
- Electro-tin plated
- Manufactured from high strength 6061-T6 aluminum alloy
- Short Circuit Rating 10K RMS SYM Amps

Benefits

- Three different connector configurations provide a wide range of tapping capabilities for up to four primary conductors
- Provides a high degree of impact resistance with superior insulating qualities
- Ensures reliability
- Provides low contact resistance
- Suitable for use with either copper or aluminum conductors
- Added protection

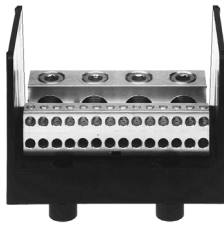


Fig. 1



Fig. 2



Fig. 3

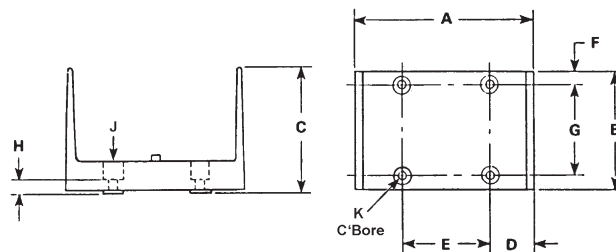


Fig. 4

Catalog Number	Figure Number	Connector		Primary		Secondary		Ampere Rating Per Pole	Number of Poles	Block Size	Hex Size	
		Primary	Secondary	Wire Range	Openings Per Pole	Wire Range	Openings Per Pole				Primary	Secondary
PDBU-428-500-1	1			500kcmil-4	4	4-14	28	1520	1	W	3/8	Slot
PDBU-49-500-1	2			500kcmil-4	4	350kcmil-6 4/0-6	6 3	1520	1	W	3/8	3/8 5/16
PDBU-55-500-1	4			500kcmil-3/0	5	500kcmil-3/0	5	1600	1	W	3/8	3/8
PDBU-412-500-1	3			500kcmil-4	4	4/0-6	12	1520	1	W	3/8	5/16

Valox® is a registered trade name of the General Electric Company.
 ° A versatile tap hole, wire range 8-14 AWG included on the connector.

Tested to UL 1953, UL File E112158



Block Size	No. of Poles	Dimensions									
		A	B	C	D	E	F	G	H	J	K
W	1	6-7/32	4	4-3/8	1-19/32	3	3/8	3-1/4	7/16	9/32	9/16



TYPE

LDA

LDB

Features

- Modular design
- Easy to assemble
- UL Recognized 90° C 600 Volts and is CSA Certified
- Electro-tin plated 6061-T6 aluminum alloy
- Clear cover
- Multiple conductor capability

Benefits

- Simplifies stocking. Combines any number of blocks with multiple conductor ranges into the specific configuration required for the job.
- Unique locking feature allows individual blocks to be combined quickly without special tools
- Ensures reliability
- Suitable for use with both copper and aluminum conductors in any combination
- Permits visual inspection
- Individual blocks supplied in a variety of configurations with one or two main cable ports and four, six, or twelve taps. All are range taking.



Fig. 1

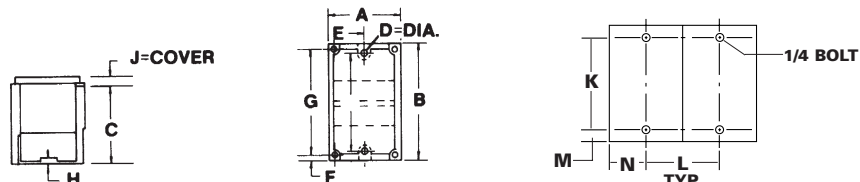


Fig. 2

Catalog Number	Figure Number	Connector		Primary			Secondary			Ampere
		Primary	Secondary	Wire Range	Openings Per Pole	Hex Size	Wire Range	Openings Per Pole	Hex Size	Rating Per Pole
LDB-112-350	1			350kcmil-6	1	3/8	4-14	12	Slot	310
LDA-112-350	2			350kcmil-6	1	3/8	4-14	12	Slot	310
LDB-112A-350	1			350kcmil-6	1	3/8	4-14	12	Slot	310
LDA-112A-350	2			350kcmil-6	1	3/8	4-14	12	Slot	310
LDB-16-350	1			350kcmil-6	1	3/8	2/0-14	6	3/16	310
LDA-16-350	2			350kcmil-6	1	3/8	2/0-14	6	3/16	310
LDB-16-500	1			500kcmil-4	1	3/8	2/0-14	6	3/16	380
LDA-16-500	2			500kcmil-4	1	3/8	2/0-14	6	3/16	380
LDB-26-350	1			350kcmil-6	2	3/8	2/0-14	6	3/16	620
LDA-26-350	2			350kcmil-6	2	3/8	2/0-14	6	3/16	620
LDB-212-4/0	1			4/0-6	2	1/4	4-14	12	Slot	460
LDA-212-4/0	2			4/0-6	2	1/4	4-14	12	Slot	460
LDB-212-500	1			500kcmil-4	2	3/8	4-14	12	Slot	760
LDA-212-500	2			500kcmil-4	2	3/8	4-14	12	Slot	760
LDB-26-500	1			500kcmil-4	2	3/8	2/0-14	6	3/16	760
LDA-26-500	2			500kcmil-4	2	3/8	2/0-14	6	3/16	760
LDB-24-500	1			500kcmil-4	2	3/8	4/0-6	4	5/16	760
LDA-24-500	2			500kcmil-4	2	3/8	4/0-6	4	5/16	760
LDB-11-500	1			500kcmil-4	1	3/8	500kcmil-4	1	3/8	380
LDA-11-500	2			500kcmil-4	1	3/8	500kcmil-4	1	3/8	380
LDB-22-350	1			350kcmil-6	2	3/8	350kcmil-6	2	3/8	620
LDA-22-350	2			350kcmil-6	2	3/8	350kcmil-6	2	3/8	620
LDB-22-500	1			500kcmil-4	2	3/8	500kcmil-4	2	3/8	760
LDA-22-500	2			500kcmil-4	2	3/8	500kcmil-4	2	3/8	760

Side Panel can be ordered separately Cat. No. LDS-1

Tested to UL 1059, UL File E84782



Dimensions

A	B	C	D=Dia.	E	F	G	H	J = Cover	K	L	M	N
3	5-1/2	3-7/16	.28 Slot	1-1/2	5/16	4-7/8	1/4	1/2	4.75	2.69	.38	1.50

TYPE PDA PDC

Features

- Modular design
- Easy to assemble
- UL Recognized 90° C 600 Volts and is CSA Certified
- Electro-tin plated
- Lexan® insulating base
- Manufactured from high strength 6061-T6 aluminum alloy

Benefits

- Simplifies stocking. Combines any number of blocks with multiple conductor ranges into the specific configuration required for the job.
- Unique locking feature allows individual blocks to be combined quickly without special tools
- Ensures reliability
- Provides low contact resistance
- Provides a high degree of impact resistance with superior insulating qualities
- Suitable for use with either copper or aluminum conductors



Fig. 1

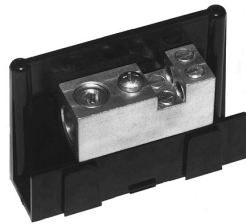


Fig. 2



Fig. 3



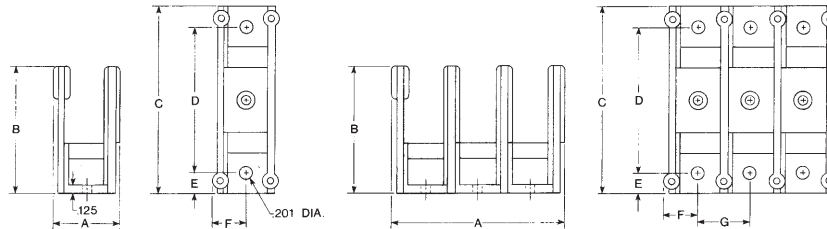
Fig. 4

Catalog Number	Figure Number	Connector		Primary		Secondary		Ampere Rating Per Pole	No. of Poles	Hex Size	
		Primary	Secondary	Wire Range	Openings Per Pole	Wire Range	Openings Per Pole			Primary	Secondary
PDC-14-2/0-1	1			2/0-14	1	4-14	4	175	1	3/16	Slot
PDA-14-2/0-1	2			2/0-14	1	4-14	4	175	Adder	3/16	Slot
PDC-11-2/0-1	3			2/0-14	1	2/0-14	1	175	1	3/16	3/16
PDA-11-2/0-1	4			2/0-14	1	2/0-14	1	175	Adder	3/16	3/16

Covers available 1-10 Poles. Specify length.

*Lexan is a registered trademark of SABIC INNOVATIVE PLASTICS HOLDINGS BV.

Tested to UL 486A-486B, UL File E84782



Block Size	No. of Poles	Dimensions						
		A	B	C	D	E	F	G
S	1	1.05	1.94	2.88	2.25	.31	.53	.80
S	2	1.85	1.94	2.88	2.25	.31	.53	.80

"A" Dimension increases by .80 per additional pole.

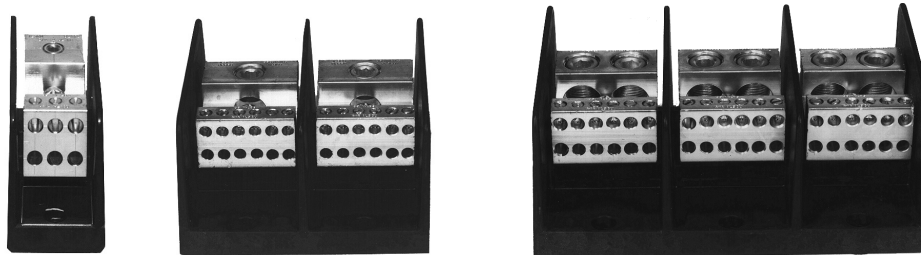
TYPE PDB

Features

- Range taking
- Valox* insulating base
- Electro-tin plated
- Manufactured from high strength 6061-T6 aluminum alloy
- UL Recognized rated 90° C and is CSA Certified, rated for 600 volts

Benefits

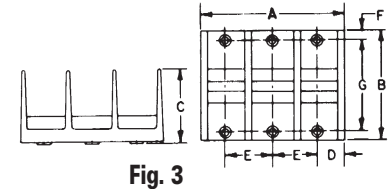
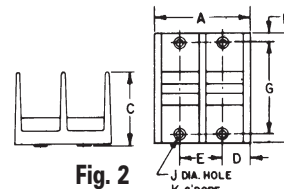
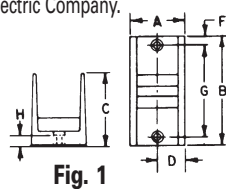
- Provides great flexibility in using the connector as an in line splice or to reduce conductor size
- Provides a high degree of impact resistance with superior insulating qualities
- Provides low contact resistance
- Suitable for use with either copper or aluminum conductors
- Ensures reliability



Catalog Number	Connector		Primary		Secondary		Ampere Rating Per Pole	Number Of Poles	Block Size	Hex Size	
	Primary	Secondary	Wire Range	Openings Per Pole	Wire Range	Openings Per Pole				Primary	Secondary
PDB-16-2/0-1			2/0-12	1	4-14	6	175	1	M		
PDB-16-2/0-2			2/0-12	1	4-14	6	175	2	M	3/16	Slot
PDB-16-2/0-3			2/0-12	1	4-14	6	175	3	M		
PDB-26-2/0-1			2/0-12	2	2-14	6	350	1	M		
PDB-26-2/0-2			2/0-12	2	2-14	6	350	2	M	3/16	Slot
PDB-26-2/0-3			2/0-12	2	2-14	6	350	3	M		
PDB-112-350-1			350kcmil-6	1	4-14	12	310	1	L		
PDB-112-350-2			350kcmil-6	1	4-14	12	310	2	L	3/8	Slot
PDB-112-350-3			350kcmil-6	1	4-14	12	310	3	L		
PDB-112A-350-1			350kcmil-6	1	4-14	12	310	1	M		
PDB-112A-350-2			350kcmil-6	1	4-14	12	310	2	M	3/8	Slot
PDB-112A-350-3			350kcmil-6	1	4-14	12	310	3	M		
PDB-14-500-1			500kcmil-4	1	2/0-14	4	380	1	M		
PDB-14-500-2			500kcmil-4	1	2/0-14	4	380	2	M	3/8	3/16
PDB-14-500-3			500kcmil-4	1	2/0-14	4	380	3	M		
PDB-16-350-1			350kcmil-6	1	2/0-14	6	310	1	L		
PDB-16-350-2			350kcmil-6	1	2/0-14	6	310	2	L	3/8	3/16
PDB-16-350-3			350kcmil-6	1	2/0-14	6	310	3	L		
PDB-162-500-1			500kcmil-4	1	2-14	6	380	1	M		
PDB-162-500-2			500kcmil-4	1	2-14	6	380	2	M	3/8	Slot
PDB-162-500-3			500kcmil-4	1	2-14	6	380	3	M		

* Valox® is a registered trade name of the General Electric Company.

Tested to UL 1059, UL File E84782



Dimensions

Block Size	Number Of Poles	Figure Number	A	B	C	D	E	F	G	H	J	K
M	1	1	1-27/32	4	2-5/8	31/32	-	5/16	3-3/8	3/8	13/64	13/32
M	2	2	3-13/32	4	2-5/8	31/32	1-17/32	5/16	3-3/8	3/8	13/64	13/32
M	3	3	5	4	2-5/8	31/32	1-17/32	5/16	3-3/8	3/8	13/64	13/32
L	1	1	3	5-1/2	3-1/2	1-1/2	-	3/8	4-3/4	7/16	9/32	1/2
L	2	2	5-11/16	5-1/2	3-1/2	1-1/2	2-11/16	3/8	4-3/4	7/16	9/32	1/2
L	3	3	8-3/8	5-1/2	3-1/2	1-1/2	2-11/16	3/8	4-3/4	7/16	9/32	1/2

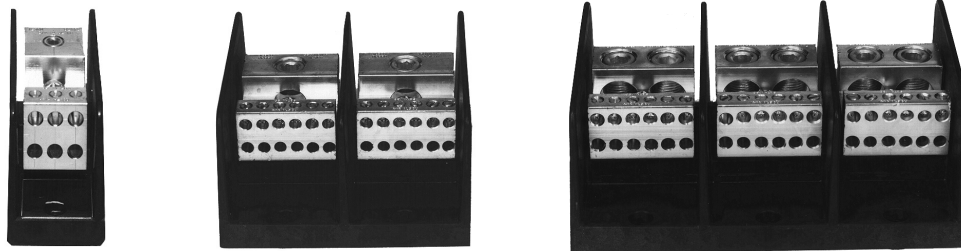
TYPE PDB

Features

- Range taking
- Valox* insulating base
- Electro-tin plated
- Manufactured from high strength 6061-T6 aluminum alloy
- UL Recognized rated 90° C and is CSA Certified, rated for 600 volts

Benefits

- Provides great flexibility in using the connector as an in line splice or to reduce conductor size
- Provides a high degree of impact resistance with superior insulating qualities
- Provides low contact resistance
- Suitable for use with either copper or aluminum conductors
- Ensures reliability



Catalog Number	Connector		Primary		Secondary		Ampere Rating Per Pole	Number Of Poles	Block Size	Hex Size	
	Primary	Secondary	Wire Range	Openings Per Pole	Wire Range	Openings Per Pole				Primary	Secondary
PDB-212-4/0-1			4/0-6	2	4-14	12	460	1	M	3/8	Slot
PDB-212-4/0-2			4/0-6	2	4-14	12	460	2	M	3/8	Slot
PDB-212-4/0-3			4/0-6	2	4-14	12	460	3	M	3/8	Slot
PDB-26-350-1			350kcmil-6	2	2/0-14	6	620	1	L	3/8	3/16
PDB-26-350-2			350kcmil-6	2	2/0-14	6	620	2	L	3/8	3/16
PDB-26-350-3			350kcmil-6	2	2/0-14	6	620	3	L	3/8	3/16
PDB-16-500-1			500kcmil-4	1	2/0-14	6	380	1	L	3/8	3/16
PDB-16-500-2			500kcmil-4	1	2/0-14	6	380	2	L	3/8	3/16
PDB-16-500-3			500kcmil-4	1	2/0-14	6	380	3	L	3/8	3/16
PDB-212-500-1			500kcmil-4	2	4-14	12	760	1	L	3/8	Slot
PDB-212-500-2			500kcmil-4	2	4-14	12	760	2	L	3/8	Slot
PDB-212-500-3			500kcmil-4	2	4-14	12	760	3	L	3/8	Slot
PDB-24-500-1			500kcmil-4	2	4/0-6	4	760	1	L	3/8	5/16
PDB-24-500-2			500kcmil-4	2	4/0-6	4	760	2	L	3/8	5/16
PDB-24-500-3			500kcmil-4	2	4/0-6	4	760	3	L	3/8	5/16
PDB-26-500-1			500kcmil-4	2	2/0-14	6	760	1	L	3/8	3/16
PDB-26-500-2			500kcmil-4	2	2/0-14	6	760	2	L	3/8	3/16
PDB-26-500-3			500kcmil-4	2	2/0-14	6	760	3	L	3/8	3/16

* Valox® is a registered trade name of the General Electric Company.

Tested to UL 1059, UL File E84782

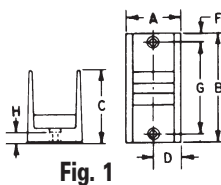


Fig. 1

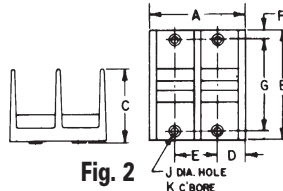


Fig. 2

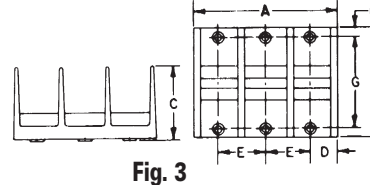


Fig. 3

Dimensions

Block Size	Number Of Poles	Figure Number	A	B	C	D	E	F	G	H	J	K
M	1	1	1-27/32	4	2-5/8	31/32	-	5/16	3-3/8	3/8	13/64	13/32
M	2	2	3-13/32	4	2-5/8	31/32	1-17/32	5/16	3-3/8	3/8	13/64	13/32
M	3	3	5	4	2-5/8	31/32	1-17/32	5/16	3-3/8	3/8	13/64	13/32
L	1	1	3	5-1/2	3-1/2	1-1/2	-	3/8	4-3/4	7/16	9/32	1/2
L	2	2	5-11/16	5-1/2	3-1/2	1-1/2	2-11/16	3/8	4-3/4	7/16	9/32	1/2
L	3	3	8-3/8	5-1/2	3-1/2	1-1/2	2-11/16	3/8	4-3/4	7/16	9/32	1/2

TYPE PDB

Features

- Multiple taps
- Range taking
- Valox* insulating base
- Electro-tin plated
- Manufactured from high strength 6061-T6 aluminum alloy
- UL Recognized rated 90° C and is CSA Certified, rated for 600 volts

Benefits

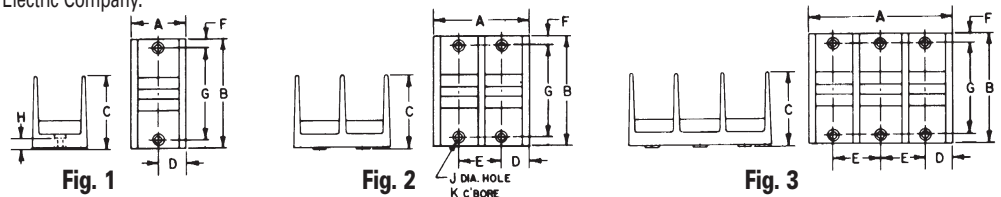
- Depending on product selected, up to twelve taps can be taken from one or two mains
- Provides tapping flexibility over a broad wire range
- Provides a high degree of impact resistance with superior insulating qualities
- Provides low contact resistance
- Suitable for use with either copper or aluminum conductors
- Ensures reliability



Catalog Number	Connector		Primary		Secondary		Ampere Rating Per Pole	Number Of Poles	Block Size	Hex Size	
	Primary	Secondary	Wire Range	Openings Per Pole	Wire Range	Openings Per Pole				Primary	Secondary
PDB-11-2/0-1			2/0-14	1	2/0-14	1	175	1	M	3/16	3/16
PDB-11-2/0-2			2/0-14	1	2/0-14	1	175	2	M		
PDB-11-2/0-3			2/0-14	1	2/0-14	1	175	3	M		
PDB-11-350-1			350kcmil-6	1	350kcmil-6	1	310	1	M	3/8	3/8
PDB-11-350-2			350kcmil-6	1	350kcmil-6	1	310	2	M		
PDB-11-350-3			350kcmil-6	1	350kcmil-6	1	310	3	M		
PDB-11-500-1			500kcmil-4	1	500kcmil-4	1	380	1	L	3/8	3/8
PDB-11-500-2			500kcmil-4	1	500kcmil-4	1	380	2	L		
PDB-11-500-3			500kcmil-4	1	500kcmil-4	1	380	3	L		
PDB-22-2/0-1			2/0-14	2	2/0-14	2	350	1	M	3/16	3/16
PDB-22-2/0-2			2/0-14	2	2/0-14	2	350	2	M		
PDB-22-2/0-3			2/0-14	2	2/0-14	2	350	3	M		
PDB-22-350-1			350kcmil-6	2	350kcmil-6	2	620	1	L	3/8	3/8
PDB-22-350-2			350kcmil-6	2	350kcmil-6	2	620	2	L		
PDB-22-350-3			350kcmil-6	2	350kcmil-6	2	620	3	L		
PDB-22-500-1			500kcmil-4	2	500kcmil-4	2	760	1	L	3/8	3/8
PDB-22-500-2			500kcmil-4	2	500kcmil-4	2	760	2	L		
PDB-22-500-3			500kcmil-4	2	500kcmil-4	2	760	3	L		

* Valox® is a registered trade name of the General Electric Company.

Tested to UL 1059, UL File E84782



Dimensions

Block Size	Number Of Poles	Figure Number	A	B	C	D	E	F	G	H	J	K
M	1	1	1-27/32	4	2-5/8	31/32	-	5/16	3-3/8	3/8	13/64	13/32
M	2	2	3-13/32	4	2-5/8	31/32	1-17/32	5/16	3-3/8	3/8	13/64	13/32
M	3	3	5	4	2-5/8	31/32	1-17/32	5/16	3-3/8	3/8	13/64	13/32
L	1	1	3	5-1/2	3-1/2	1-1/2	-	3/8	4-3/4	7/16	9/32	1/2
L	2	2	5-11/16	5-1/2	3-1/2	1-1/2	2-11/16	3/8	4-3/4	7/16	9/32	1/2
L	3	3	8-3/8	5-1/2	3-1/2	1-1/2	2-11/16	3/8	4-3/4	7/16	9/32	1/2

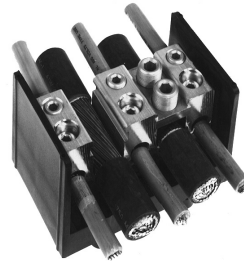
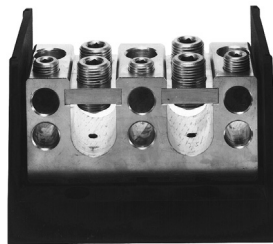
TYPE PDB

Features

- Lay-In primary cable ports
- Valox insulating base
- Clear cover
- UL 1059 Recognized and CSA Certified for 600 volts
- Electro-tin plated
- Manufactured from high strength 6061-T6 aluminum alloy

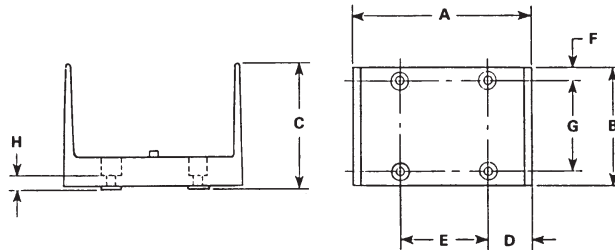
Benefits

- Designed for feed through of two primary conductors and up to six taps with no need to break the main feeder cable
- Provides a high degree of impact resistance with superior insulating qualities
- Permits visual inspection
- Ensures reliability
- Provides low contact resistance
- Suitable for use with either copper or aluminum conductors



Catalog Number	Connector		Primary		Secondary		Ampere Rating Per Pole	Number Of Poles	Hex Size	
	Primary	Secondary	Wire Range	Openings Per Pole	Wire Range	Openings Per Pole			Primary	Secondary
	PDB-26-750-1			750kcmil-250kcmil	2	250kcmil-6			6	950

Tested to UL 1059, UL File E84782



Block Size	No. of Poles	Dimensions							
		A	B	C	D	E	F	G	H
W	1	6-7/32	4	4-3/8	1-19/32	3	3/8	3-1/4	7/16

* Valox® is a registered trade name of the General Electric Company.

TYPE PDB

Features

- Manufactured from high strength 6061-T6 aluminum alloy
- Valox* insulating base
- UL 1059 Recognized 90° C 600 volts
- Electro-tin plated
- Clear cover

Benefits

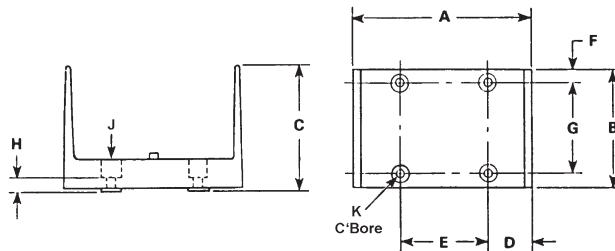
- Reliable use for copper conductor only
- Provides a high degree of impact resistance with superior insulating qualities
- Ensures reliability
- Provides low contact resistance
- Provides visual inspection



Catalog Number	Connector		Primary		Secondary		Ampere Rating Per Pole	Number Of Poles	Block Size	Hex Size	
	Primary	Secondary	Wire Range	Openings Per Pole	Wire Range	Openings Per Pole				Primary	Secondary

Valox® is a registered trade name of the General Electric Company.
A versatile tap hole, wire range 8-14 AWG included on the connector.

Tested to UL 1059, UL File E84782



Block Size	No. of Poles	Dimensions									
		A	B	C	D	E	F	G	H	J	K
W	1	6-7/32	4	4-3/8	1-19/32	3	3/8	3-1/4	7/16	9/32	9/16

TYPE PDB

Features

- Multiple taps
- Valox® insulating base
- Clear cover
- UL 1059 Recognized 90° C 600 Volts and is CSA Certified
- Electro-tin plated
- Manufactured from high strength 6061-T6 aluminum alloy

Benefits

- Three different connector configurations provide a wide range of tapping capabilities for up to four primary conductors
- Provides a high degree of impact resistance with superior insulating qualities
- Permits visual inspection
- Ensures reliability
- Provides low contact resistance
- Suitable for use with either copper or aluminum conductors



Fig. 1



Fig. 2



Fig. 3

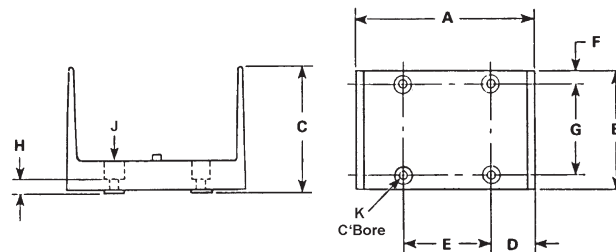


Fig. 4

Catalog Number	Figure Number	Connector		Primary		Secondary		Ampere Rating Per Pole	Number of Poles	Block Size	Hex Size	
		Primary	Secondary	Wire Range	Openings Per Pole	Wire Range	Openings Per Pole				Primary	Secondary
PDB-428-500-1	1			500kcmil-4	4	4-14	28	1520	1	W	3/8	Slot
PDB-49-500-1	2			500kcmil-4	4	350kcmil-6 4/0-6	6 3	1520	1	W	3/8	3/8 5/16
‡ PDB-55-500-1	4			500kcmil-3/0	5	500kcmil-3/0	5	1600	1	W	3/8	3/8
PDB-412-500-1	3			500kcmil-4	4	4/0-6	12	1520	1	W	3/8	5/16

Valox® is a registered trade name of the General Electric Company.
 ° A versatile tap hole, wire range 8-14 AWG included on the connector.
 ‡ Not CSA Certified

Tested to UL 1059, UL File E84782



Block Size	No. of Poles	Dimensions									
		A	B	C	D	E	F	G	H	J	K
W	1	6-7/32	4	4-3/8	1-19/32	3	3/8	3-1/4	7/16	9/32	9/16

U.S. TECHNICAL SUPPORT
1-800-776-9775

ILSCO CORPORATION • 4730 Madison Road, Cincinnati, Ohio 45227-1426
Phone (513) 533-6200 • Fax (513) 871-4084
sales@ilsco.com • www.ilsco.com

Lined area for technical support notes.

