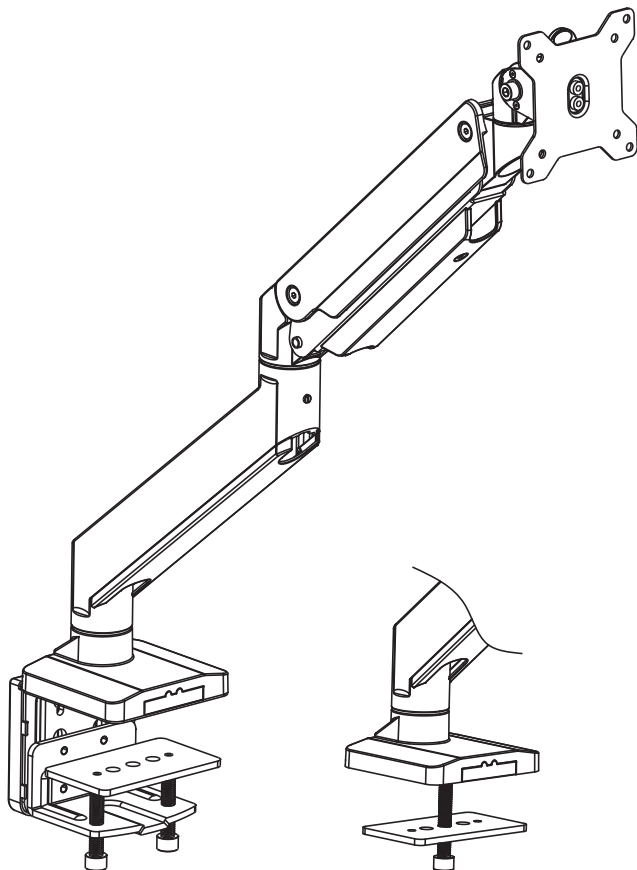




# Single Monitor Desk Mount



**GSM001XL**



75x75/100x100



[support@walelectric.com](mailto:support@walelectric.com)

# WARNING!

If you do not understand these directions, or if you have any doubts about the safety of the installation, please call a qualified technician. Check carefully to make sure there are no missing or defective parts. Improper installation may cause damage or serious injury. Do not use this product for any purpose that is not explicitly specified in this manual. Do not exceed weight capacity. We cannot be liable for damage or injury caused by improper mounting, incorrect assembly or inappropriate use.



## TIPOVER WARNING

**SERIOUS OR FATAL CRUSHING INJURIES CAN OCCUR FROM TIPOVER.  
TO HELP PREVENT TIPOVER:**

- NEVER ALLOW CHILDREN TO CLIMB, STAND, HANG, OR PLAY ON ANY PART OF MONITOR OR STAND.
- USE TIPOVER RESTRAINT OR ANCHOR STAND TO WALL.

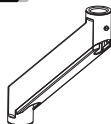
**USE OF TIPOVER RESTRAINTS MAY ONLY REDUCE, BUT NOT ELIMINATE RISK OF TIP OVER.**

SMALL PARTS- NOT FOR CHILDREN UNDER 3 YEARS. ADULT SUPERVISION IS REQUIRED.

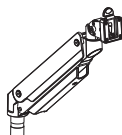
## Supplied Parts List



Base  
A (x1)



Arm  
B (x1)



Arm  
C (x1)



VESA Plate  
D (x1)



Support Plate  
E (x1)



Bottom Grommet Plate  
F (x1)



Anti-skid Pad  
G (x1)



Decor Cover  
H (x1)



C-Clamp Brace  
I (x1)



C-Clamp  
J (x1)



Bolt  
K (x4)



Allen Key 3mm  
L (x1)



Allen Key 4mm  
M (x1)



Allen Key 6mm  
N (x1)



M4x12 Bolt  
M-A (x4)



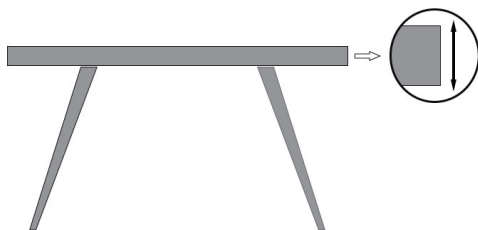
M5x12 Bolt  
M-B (x4)



D5 Washer  
M-C (x4)

## Step 1

Measure the thickness of your mounting surface or desk

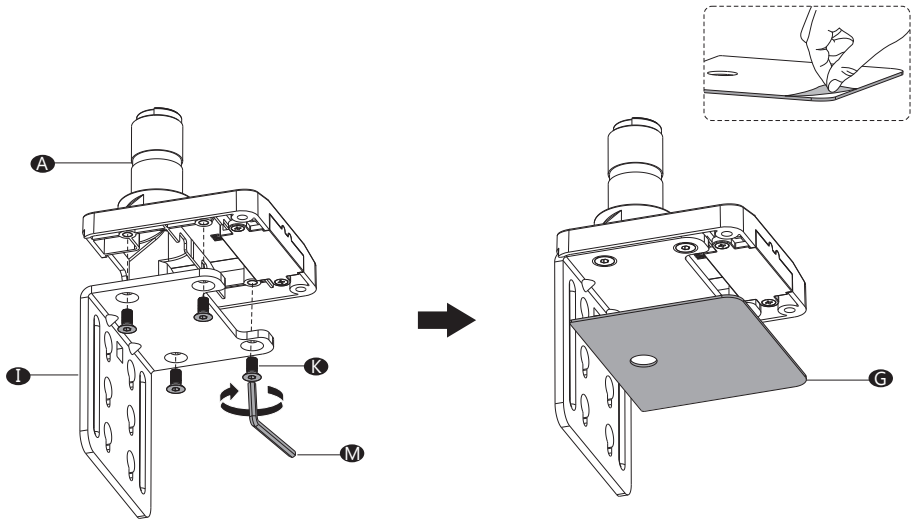


Fit clamp: 0.4"-3.3"  
Grommet: 0.4"-1.9"

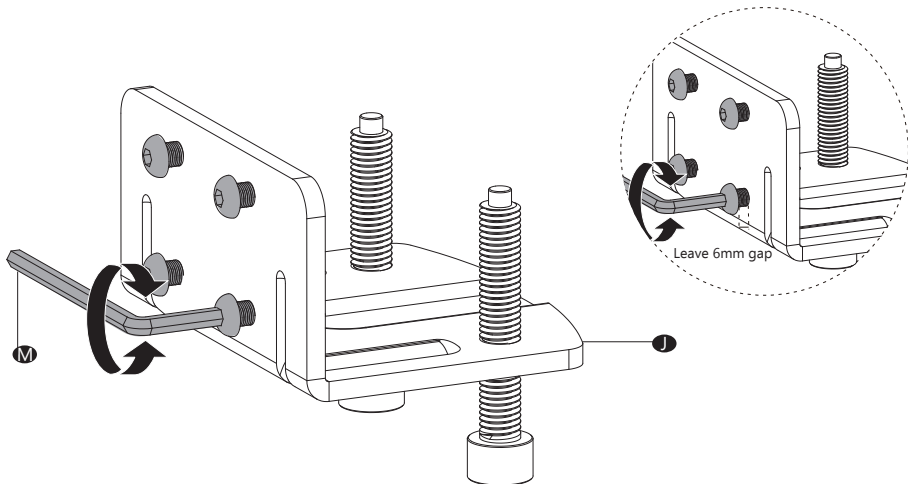
## Step 2

### Option A Clamp Installation

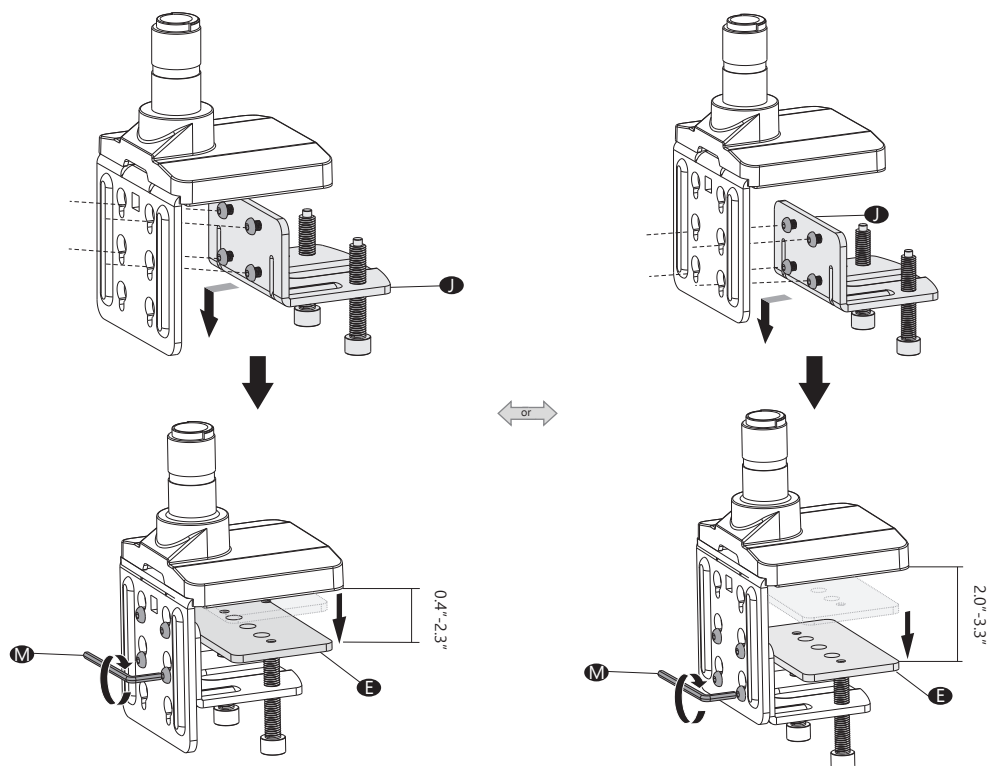
1. Connect the C-Clamp Brace **L** to the Base **A** from the bottom using 4 pcs Bolt **K** and tighten with Allen Key 4mm **M**. Tear off the protective paper to attach Anti-Skid Pad **G** to the bottom designated position of Base **A** as the image shown.



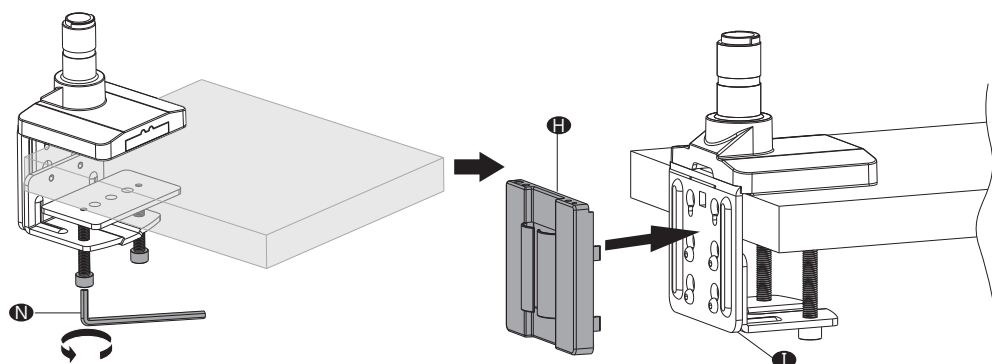
2. Loosen the Bolts on the C-Clamp **J** using Allen Key 4mm **M**.



3. Hang the C-Clamp **I** on the C-Clamp Brace **J** to the preferred height according to your desk thickness and tighten using Allen Key 4mm **M**. Place Support Plate **E** on top of clamp bolts.



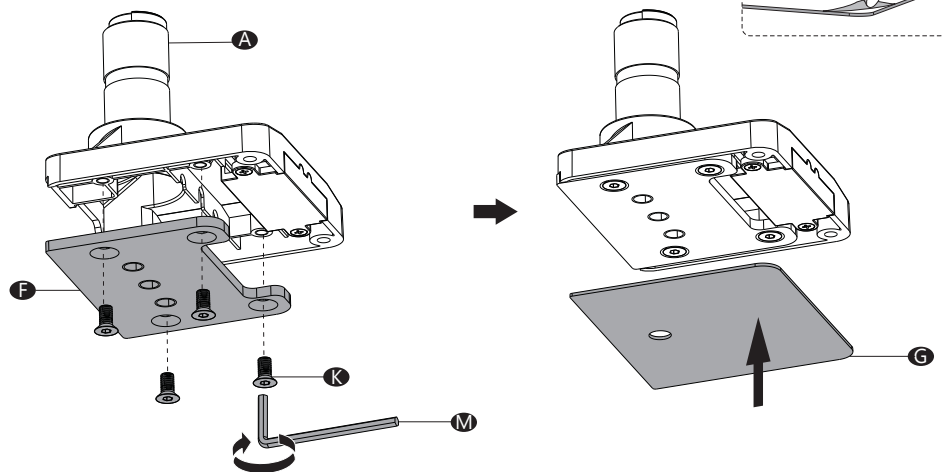
4. Position base on desktop and tighten clamp bolts evenly using Allen Key 6mm **N**. Attach Decor Cover **H** to back of C-Clamp Brace **I**.



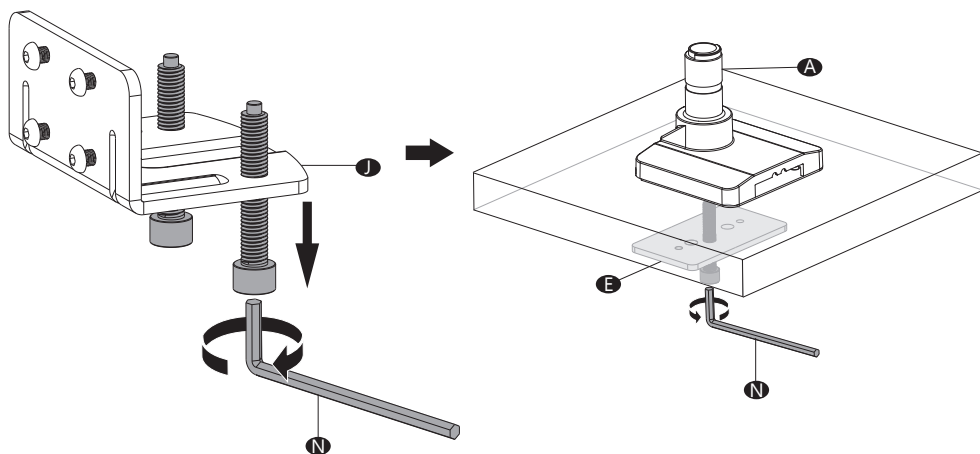
## Step 2

### Option B Grommet Base Installation

1. Connect the Bottom Grommet Plate **F** to the Base **A** from the bottom using 4 pcs Bolt **K** and tighten with Allen Key 4mm **M**. Tear off the protective paper to attach Anti-Skid Pad **G** to the bottom designated position of Base **A** as the image shown.

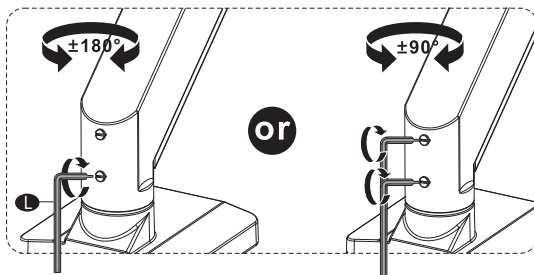
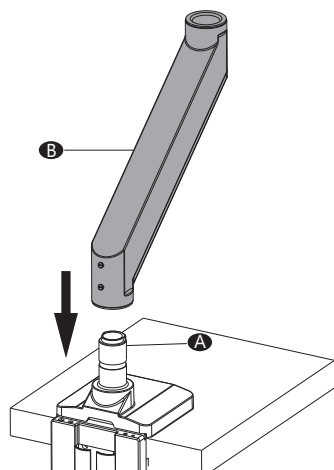


2. Remove clamp bolt from C-Clamp **J** using Allen Key 6mm **N**. Place the Base **A** onto the desk hole, and guide the Support Plate **E** through the bolt. Tighten the bolt to the base for stability using Allen Key 6mm **N**.



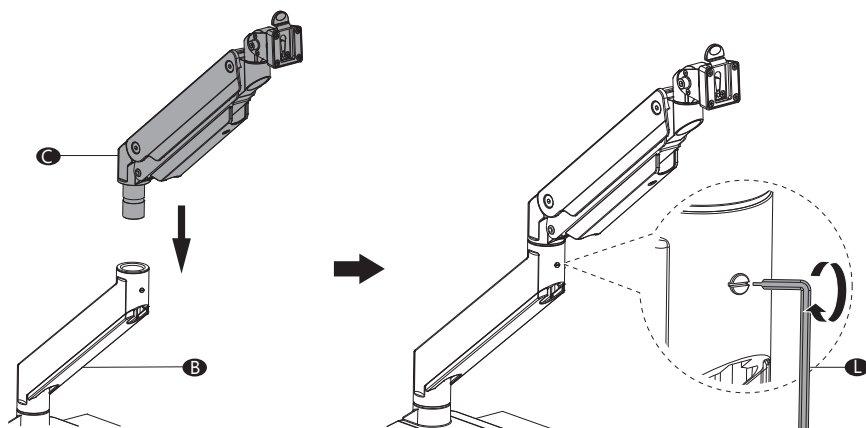
## Step 3

Connect the Arm **B** to the Base **A** and tighten the lower screw with Allen Key 3mm **L**. Optionally, also tighten the upper screw to restrict swivel movement to  $\pm 90^\circ$ .



## Step 4

Connect the Arm **C** to the Arm **B** and tighten with Allen Key 3mm **L**.



## Step 5

### Step 5.1

Only one screw size fits your TV

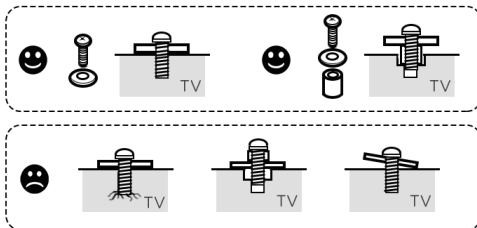
M4x12



M5x12

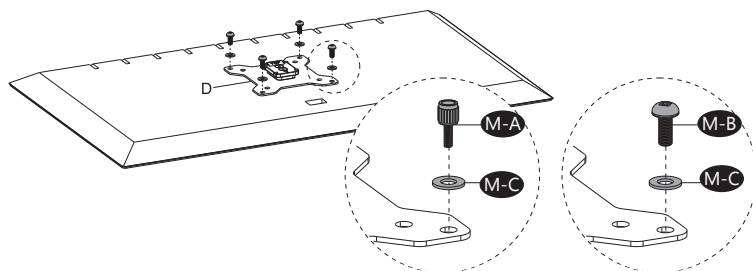


Hand thread screws into the threaded inserts on the back of your TV to determine which screw diameter (M4) or (M5) to use.



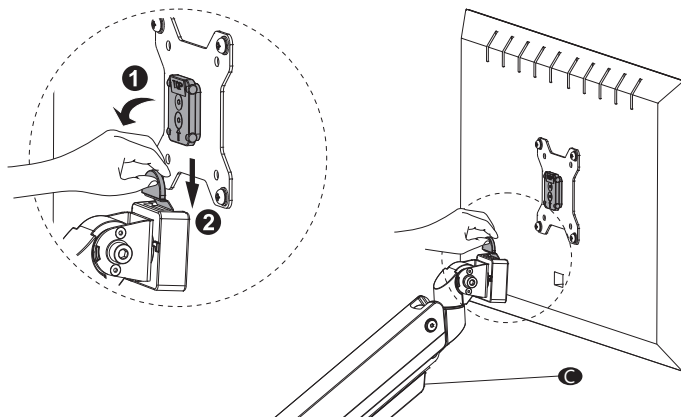
### Step 5.2

Select M4x12 Bolt (M-A) or M5x12 Bolt (M-B) according to your TV/Monitor, connect VESA Plate (D) together with D5 Washer (M-C) into the mounting holes on the back of TV/Monitor, tighten with screwdriver. (Screwdriver needed but not included)



## Step 6

Pull the buckle and put the assembled TV/Monitor onto the Arm (C) and ensure stability.





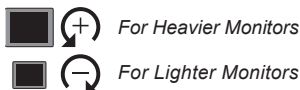
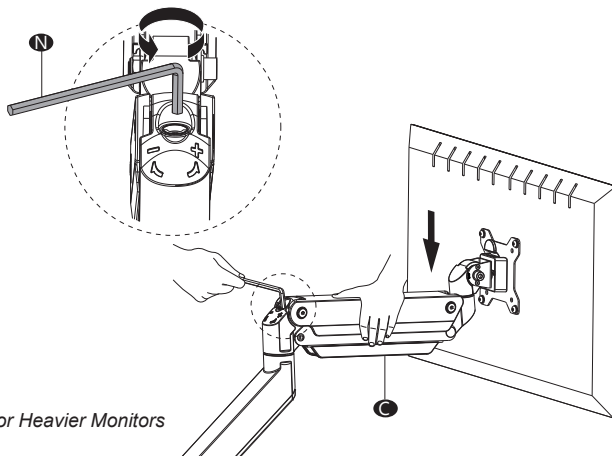
## Step 7



Press the Arm **C** on horizontal level as image shown, adjust gas spring tension to your personal preference using Allen Key 6mm **N**.

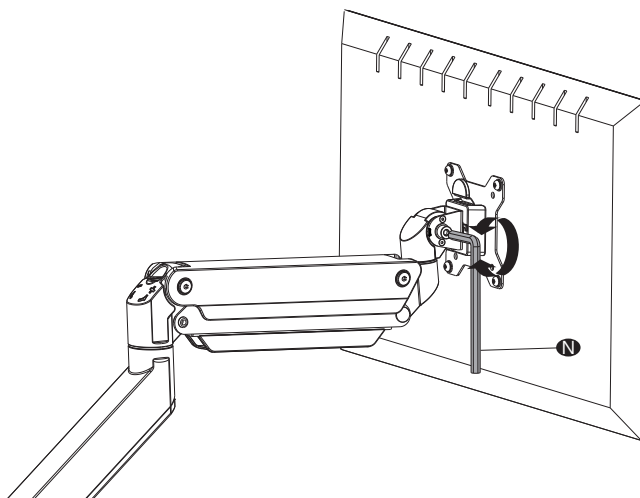
### Adjust the Gas Spring Tension

- Insert the 6mm Allen Key into the adjusting hole and turn clockwise (-) to reduce gas spring tension, suitable for lighter screens.
- Insert the 6mm Allen Key into the adjusting hole and turn counter-clockwise (+) to increase gas spring tension, suitable for heavier screens.
- Please take note it may take numerous turns for gas spring tension adjustment.



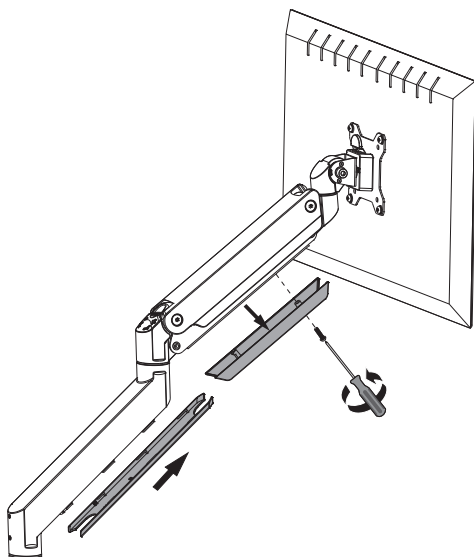
## Step 8

Adjust the tilt tension using Allen Key 6mm **N**.



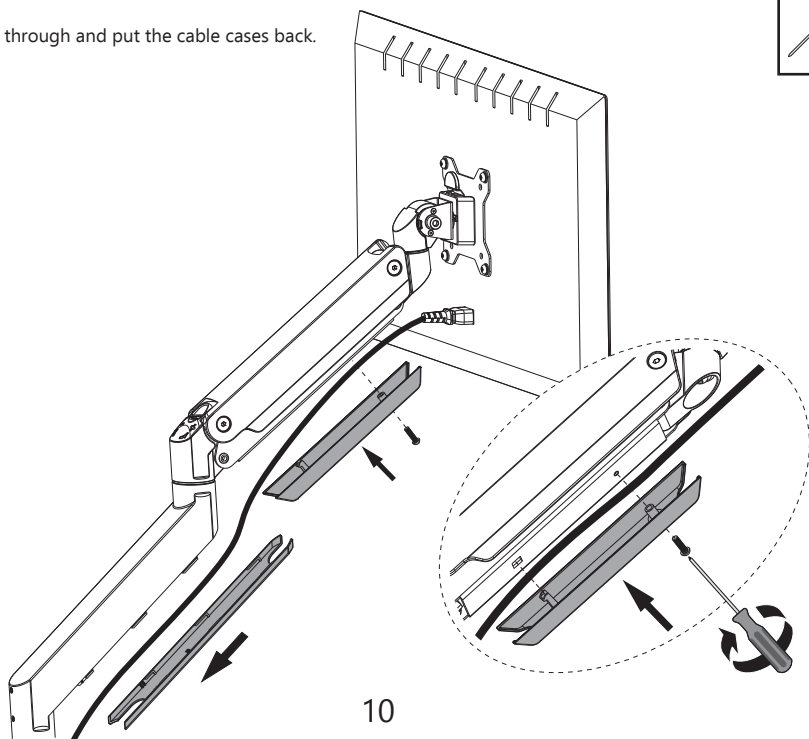
## Step 9

Screw out the bolts and take off the cable cases.



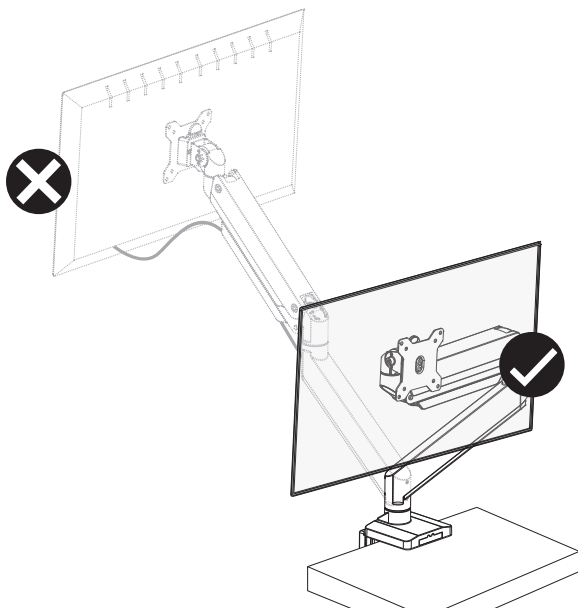
## Step 10

Guide the cables through and put the cable cases back.



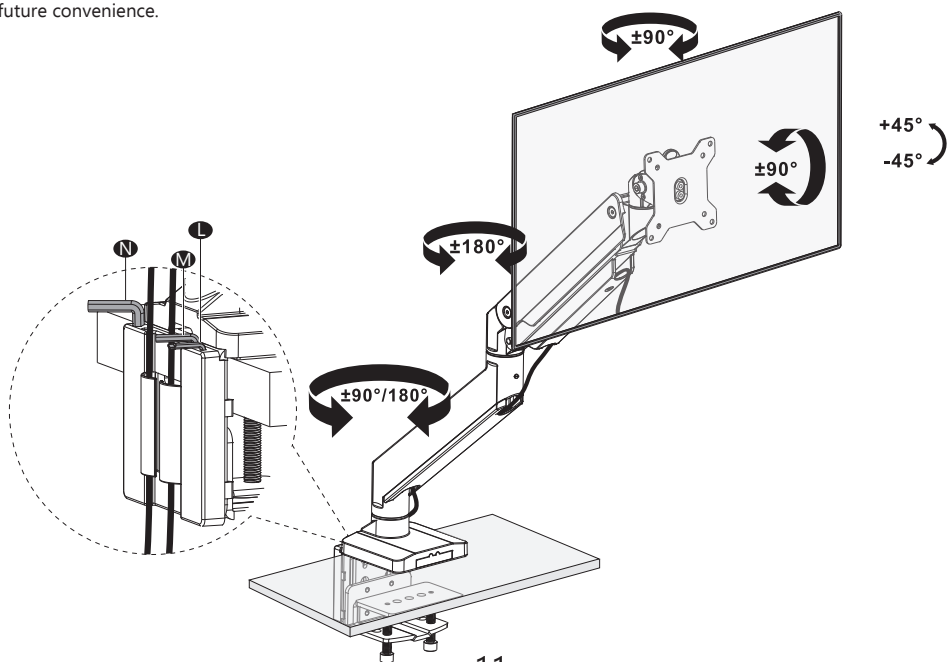
## Step 11

For safety, please do not extend the monitor behind the desk. This may cause instability and tip the desk over.



## Step 12

Manually swivel, tilt, and rotate the monitor for the best viewing angle. Store the Allen Keys in the holder of Decor Cover **H** for future convenience.





**Thank you for choosing us!**

*We support the technology that brings your home to life.*  
*We offer high quality products, professional customer service,*  
*and extensive technical support.*

---

**If you have any questions, please contact us.**

 1-844-SATTler (18447288537)

 [support@wallelectric.com](mailto:support@wallelectric.com)

 [www.wallelectric.com](http://www.wallelectric.com)