



Proven solutions
you can trust



3M ESPE

Dear Dental Professional,

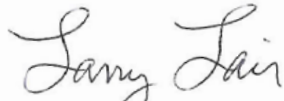
There are many stories in this company about technology cross-pollination that have led to breakthrough innovations that really make a difference for our customers. Every day we are working to leverage the resources of the total company to help solve problems and make things better for our dental customers and partners around the world. This catalog represents that effort, and throughout you will find many new products designed to improve the field of dentistry, along with our tried and true products that continue to satisfy dental professionals year after year.

In order to create products like these, it takes a unique partnership between our award-winning innovation and your dental expertise. These products are a result of the ongoing dialog and collaboration we have developed with dental professionals around the world. We continuously listen to your feedback and strive to provide you with the tools you need to improve your practice.

3M ESPE remains dedicated to delivering practical and ingenious solutions that will make a difference in your dental practice. For additional information on anything in this catalog or for technical support, call the 3M ESPE Customer Care Center at 1-800-634-2249 (1-888-363-3685 in Canada). You can also visit www.3MESPE.com for a wealth of information. To order, please contact your approved 3M ESPE distributor.

Thank you for your continued support.

Sincerely,



Larry Lair
President and General Manager
3M ESPE

Table of Contents

Direct Restorative Products

■ Adhesives and Etchants	2-9
■ Composites/Compomers	10-19
■ Glass Ionomer Restoratives and Liners	20-30
■ Curing Lights	31
■ Finishing and Polishing	32-34
■ Other Restorative Products and Accessories	35-37

Preventive Products

■ Varnish	38-39
■ Toothpaste	40
■ Sealant	41
■ Oral Gels and Rinses	42-44
■ Prophy/Floss/Xylitol Mints	45-47
■ Whitening	48

Infection Control Products

■ Hand Antiseptic	49
■ Sterilization Monitoring	50-51
■ Face Masks	52-53

Indirect Restorative Products

■ Impression Materials	54-68
■ Impression Equipment and Accessories	69-72
■ Temporization Materials	73-75
■ Crowns & Crown Instruments	76-84
■ Cements	85-95
■ Aplicap™/Maxicap™ Capsule Equipment & Accessories	96-97
■ MDI Mini Dental Implants	98-99

Lab and Digital Products

■ Digital Impressions	100-101
■ Digital Chairside Restorative Materials	102-103
■ Lava™ Laboratory Materials	104-108
■ Lava™ Equipment	109-110
■ Other Laboratory Products	111-115



Adper™ Easy Bond Self-Etch Adhesive

A one-step, one-coat self-etch adhesive that provides a fast and easy application, along with strong bonds.

Indications

- All classes of fillings with light-curing composite or compomer.
- Core build-ups made of light-curing composite.
- Repair of composite or compomer fillings.
- Root surface desensitization.
- Intraoral repair of existing composite, porcelain-fused-to-metal, and all-ceramic restorations.
- Cementation of indirect restorations made of composite or compomer, ceramic and metal (after light curing and when combined with RelyX™ ARC Adhesive Resin Cement).

Product Benefits

- One-bottle, one-coat convenience.
- High bond strength with proven chemistry and filler.
- Virtually no post-operative sensitivity.
- High marginal integrity and low microleakage.
- Moisture tolerant—works well on moist or dry enamel and dentin.
- Desensitizes hypersensitive root surface.
- Available in unit-dose delivery.
- Uniquely suited for the “selective” etch technique.



Product Information

Item Number

Adper Easy Bond Self-Etch Adhesive Intro Kit	41245
1 – 5ml Adhesive Vial	
50 – Disposable Mixing Wells	
50 – Disposable Microbrushes	
Adper Easy Bond Self-Etch Adhesive Refills	
1 – 5ml Adhesive Vial	41246
40 – Adhesive Unit-Dose Applicators	41248
100 – Adhesive Unit-Dose Applicators	41249
200 – Adhesive Unit-Dose Applicators	41252

Adper™ Scotchbond™ SE Self-Etch Adhesive

This two-bottle, high-performance self-etch adhesive system offers total-etch performance, and introduces confidence-inspiring features you won't find with other self-etch adhesives.

Indications

- Bonding between dentin/enamel and composite filling.
- Bonding between dentin/enamel and compomer filling.
- Intraoral repair of porcelain, composite and metal using light-cure composite resin.
- Desensitization of hypersensitive teeth/root surface.

Product Benefits

- Color-change indicator verifies coverage and etch activation.
- Radiopacity reduces risk of misdiagnosing secondary caries.
- Total-etch performance.
- High bond strength with proven chemistry and bonded nanofiller.
- Reduces risk of post-operative sensitivity.
- Works on moist or dry enamel and dentin.
- High marginal integrity and low microleakage.
- Solvent-free hydrophobic overcoat for consistent performance.
- Desensitizes root surface.



Product Information

Item Number

Adper Scotchbond SE Self-Etch Adhesive

Intro Kit	42000
1 – 5g (Primer) Vial Liquid A	
1 – 5g (Bond) Vial Liquid B	
50 – Disposable Dispensing Wells	
50 – Disposable Microbrushes, Purple	
50 – Disposable Microbrushes, Black	

Adper Scotchbond SE Self-Etch Adhesive Trial Kit

1 – 2.5g (Primer) Vial Liquid A	
1 – 2.5g (Bond) Vial Liquid B	
50 – Disposable Dispensing Wells	
50 – Disposable Microbrushes, Purple	
50 – Disposable Microbrushes, Black	

Adper Scotchbond SE Self-Etch Adhesive Refills

1 – 5g (Primer) Vial Liquid A	42010
1 – 5g (Bond) Vial Liquid B	42020

Adper™ Prompt™ Self-Etch Adhesive

Offers easy activation and high performance. The unique unit-dose delivery is fast and easy to use, allowing you to etch, prime and bond in a single step.

Indications

- Bonding between dentin/enamel and direct, light-cured composite and compomer filling materials.
- Bonding light-cured pit and fissure sealants.
- Root surface desensitization.

Product Benefits

- Bonds to dentin, cut and uncut enamel without a separate etch step.
- Clinically proven.
- Very low incidence of post-operative sensitivity.
- Desensitizes hypersensitive root surfaces.
- Simplifies sealant technique.
- Extra small applicator works well with very small preparations and in hard-to-reach areas of the mouth.
- Available in disposable unit-dose delivery.



Product Information

Item Number

Adper Prompt Self-Etch Adhesive Refills

40 – Adhesive Unit-Dose Applicators	41925
100 – Adhesive Unit-Dose Applicators	41926
500 – Adhesive Unit-Dose Applicators	41928
50 – XS Applicator Brushes	41904

Clinpro™ Sealant and Adper Prompt Adhesive

Trial Kit.	12626TP
1 – .2ml Clinpro Sealant Syringe	
10 – Sealant Syringe Tips, Black	
20 – Adhesive Unit-Dose Applicators	

Adper™ Single Bond Plus Adhesive

A fast, easy and convenient total-etch, single-component bonding agent offering exceptional bond strength. Available in unit-dose applicators or easy dispensing bottle.

Indications

- All direct, light-cured bonding procedures.
- Indirect bonding procedures when combined with 3M ESPE RelyX™ ARC Adhesive Resin Cement.
- Root surface desensitization.
- Porcelain and composite repair.
- Bonding veneers in combination with RelyX™ Veneer Cement from 3M ESPE.

Product Benefits

- Excellent bonding to dentin and enamel.
- Easy-to-use unit dose—simply press one chamber and use.
- Doesn't need shaking; nanofiller is stable and will not settle out of dispersion.
- Unique, easy-dispensing bottle permits visual inspection of exactly how much adhesive remains in the bottle.
- Cap snaps securely shut, minimizing evaporation.
- Ethanol/water-based adhesive.



Product Information	Item Number
Adper Single Bond Plus Adhesive Unit-Dose Kit	51000
1 – 3ml Phosphoric Etchant Syringe	
40 – Adhesive Unit-Dose Applicators	
Adper Single Bond Plus Adhesive Unit-Dose Kit	51001
1 – 3ml Phosphoric Etchant Syringe	
100 – Adhesive Unit-Dose Applicators	
Adper Single Bond Plus Adhesive Intro Kit (Vial)	51101
2 – 3ml Phosphoric Etchant Syringes	
1 – 6g Adhesive Vial	
1 – Brush Handle	
60 – Brush Tips	
25 – Etchant Tips	
48 – Disposable Mixing Wells	
Adper Single Bond Plus Adhesive Refill	
1 – 6g Adhesive Vial	51102

Adper™ Scotchbond™ Multi-Purpose Adhesive

A light-cure system that is designed to handle difficult bonding situations, is fast and easy to apply and offers excellent bonds to a variety of surfaces.

Indications

- Light-cured composite restorations.
- Porcelain and composite repairs.
- Bonding of veneers in combination with RelyX™ Veneer Cement from 3M ESPE.

Product Benefits

- Versatile adhesive system designed to handle difficult bonding situations such as bonding to sclerotic dentin and bonding in moist environments.
- Reduces microleakage that can contribute to post-operative sensitivity for increased patient comfort and doctor confidence.
- Offers excellent bond strengths to a variety of surfaces for reliable bonding performance.
- The system offers complete dental bonding with dual-cure capabilities when used with Adper™ Scotchbond™ Multi-Purpose Plus Activator and Adper™ Scotchbond™ Multi-Purpose Plus Catalyst.
- Easy-to-follow technique guides and color-coded, numbered vials make the system efficient and simple to use.



Product Information

Item Number

Adper Scotchbond Multi-Purpose Adhesive Intro Kit	7540S
2 – 3ml Phosphoric Etchant Syringes	
1 – 8ml Primer Vial	
1 – 8ml Adhesive Vial	
3-Well Mixing Well	
Brush Tips/Color-Coded Handles	
Adper Scotchbond Multi-Purpose Adhesive Refills	
1 – 8ml Primer Vial	7542
1 – 8ml Adhesive Vial	7543
2 – 3ml Phosphoric Etchant Syringes with 50 Etchant Tips	7523

Adper™ Scotchbond™ Multi-Purpose Plus Adhesive

Offers complete dental bonding with dual-cure capabilities and excellent bond strengths for a variety of surfaces common to many dental procedures.

Indications

- Composite restorations.
- Porcelain and composite repairs.
- Bonding of veneers in combination with RelyX™ Veneer Cement from 3M ESPE.
- Bonding of inlays/onlays, crowns, bridges, Maryland bridges and posts.
- Bonding porcelain and metal orthodontic brackets to porcelain, metal and composite crowns.
- Bonding amalgam.

Product Benefits

- Versatile adhesive system designed to handle difficult bonding situations such as bonding to sclerotic dentin and bonding in moist or dry environments.
- Reduces microleakage that can contribute to post-operative sensitivity for increased patient comfort and doctor confidence.
- Offers excellent bond strengths to a variety of surfaces for reliable bonding performance.
- Easy-to-follow technique guides and color-coded, numbered vials make the system efficient and simple to use.



Product Information

Item Number

Adper Scotchbond Multi-Purpose Plus Adhesive Intro Kit	7545S
2 – 3ml Phosphoric Etchant Syringes	
1 – 8ml Primer Vial	
1 – 8ml Adhesive Vial	
1 – 4ml Activator Vial	
1 – 4ml Catalyst Vial	
1 – 5ml RelyX™ Ceramic Primer	
3-Well Mixing Well	
Brush Tips/Color-Coded Handles	
Adper Scotchbond Multi-Purpose Plus Adhesive Refills	
1 – 4ml Activator Vial.	7546
1 – 4ml Catalyst Vial	7547
1 – 5ml RelyX Ceramic Primer.	2721

Scotchbond™ Dual Cure Adhesive

The original two-component, dual-cured dental adhesive system.

Indications

- Recommended for all classes of restorations.

Product Benefits

- Dual curing.



Product Information

Item Number

Scotchbond Dual Cure Adhesive Intro Kit	7535
1 – 5ml Resin Vial	
1 – 5ml Liquid Vial	
1 – 9ml Scotchbond™ Etchant Gel Vial	
3-Well Mixing Well	
1 – Applicator Handle	
60 – Brush Tips	
Scotchbond Dual Cure Adhesive Refills	
1 – 5ml Resin Vial	7533R
1 – 5ml Liquid Vial	7533L
1 – 9ml Scotchbond Etchant Gel Vial	7423

Scotchbond™ Etchant

A 35% or 37% phosphoric etchant that is used to etch enamel and/or dentin as indicated in the instructions provided with the various dental adhesive systems.

Indications

- Acid etching of enamel and dentin.

Product Benefits

- The syringe version is colored blue, which makes precise application easier.
- The flexible dispensing tip can be individually adjusted before application.
- The bottle version has a low-viscosity, gel-like consistency.
- The etching liquid is an aqueous solution of 37% phosphoric acid.



Product Information	Item Number
Scotchbond Etchant Delivery System	7523
Contains 35% Phosphoric Etchant 2 – 3ml Syringes and 50 Etchant Tips	
Scotchbond Etchant Refills	
Etchant Dispensing Tips, 25/Bag	7523T
1 – 9ml Scotchbond Etchant Gel Vial Contains 37% Phosphoric Etchant	7423
1 – 9ml Etching Liquid Vial Contains 37% Phosphoric Etchant	1923

Filtek™ Supreme Ultra Universal Restorative

The top universal nanocomposite that's easy to use and offers esthetics and strength for all of your dental composite needs.

Indications

- Direct anterior and posterior restorations, including occlusal surfaces.
- Core buildup.
- Splinting.
- Indirect restorations, including inlays, onlays and veneers.

Product Benefits

- Unsurpassed esthetics: excellent polish and better polish retention than a microfill.
- Improved fluorescence.
- Simple to use: color-coded by opacity and bold, easy-to-read labels.
- Exceptional handling and improved handling of Translucent shades.
- 3M ESPE's unique nanofiller technology gives your restorations the best of strength and esthetics.
- Outstanding strength for anterior and posterior use.
- Wide range of shades and opacities.
- Expanded selection of Body shades.
- Wear resistance equivalent to Filtek™ Supreme Plus Universal Restorative.*
- Radiopaque.



Product Information	Item Number
Filtek Supreme Ultra Universal Restorative Single Opacity Trial Kit – Capsule	6029ST
20 – 0.2g Capsules: 10 each of Body Shades A1 and A2	
20 – Adper™ Easy Bond Self-Etch Adhesive Unit-Dose Applicators	
5 – 0.2g Capsules: Filtek™ Supreme Ultra Flowable Restorative Sample Pack	
1 – Restorative Dispenser for Capsules	
Filtek Supreme Ultra Universal Restorative Single Shade Intro Kit – Syringe	6028S
2 – 4g Syringes: 1 each of Body Shades A2 and A3	
1 – 1.5g Vial Adper Easy Bond Self-Etch Adhesive	
Filtek Supreme Ultra Universal Restorative Dual Shade Intro Kit – Capsule	6029D
40 – 0.2g Capsules: 10 each of Dentin Shades A3, A4 and Enamel Shades A2, A3	
1 – 1.5g Vial Adper Easy Bond Self-Etch Adhesive	
1 – Shade Selector Wheel	
Filtek Supreme Ultra Universal Restorative Dual Shade Intro Kit – Syringe	6028D
4 – 4g Syringes: 1 each of Dentin Shades A3, A4 and Enamel Shades A2, A3	
1 – 1.5g Vial Adper Easy Bond Self-Etch Adhesive	
1 – Shade Selector Wheel	
Filtek Supreme Ultra Universal Restorative Master's Kit, Capsule	6029M
129 – 0.2g Capsules in Plastic Reusable Case:	
3 each of Dentin Shades: A1, A2, A3, A4, B3, C4, W	
6 each of Body Shades: A1, A2, A3, A3.5, A4, B1, B2, C2	
3 each of Body Shades: A6, B3, B5, C1, C3, D2, D3, W, XW	
6 each of Enamel Shade: A2	
3 each of Enamel Shades: A1, A3, B1, B2, D2, W, XW	
3 each of Translucent Shades: AT, CT	
1 – Shade Selector Wheel	

*Source: 3M ESPE in vitro internal data



Restoration created using multiple shades of Filtek™ Supreme Ultra Universal Restorative.

Photos courtesy of Dr. Gabriel Krastl, Department of Periodontology, Endodontics and Cariology, University of Basel, Switzerland.

Product Information		Item Number	
Shade	Syringe	Capsule	
Filtek Supreme Ultra Universal Restorative Dentin Refills			
A1D	6028A1D	6029A1D	
A2D	6028A2D	6029A2D	
A3D	6028A3D	6029A3D	
A4D	6028A4D	6029A4D	
B3D	6028B3D	6029B3D	
C4D	6028C4D	6029C4D	
White	6028WD	6029WD	
Filtek Supreme Ultra Universal Restorative Body Refills			
A1B	6028A1B	6029A1B	
A2B	6028A2B	6029A2B	
A3B	6028A3B	6029A3B	
A3.5B	6028A3.5B	6029A3.5B	
A4B	6028A4B	6029A4B	
A6B	6028A6B	6029A6B	
B1B	6028B1B	6029B1B	
B2B	6028B2B	6029B2B	
B3B	6028B3B	6029B3B	
B5B	6028B5B	6029B5B	
C1B	6028C1B	6029C1B	
C2B	6028C2B	6029C2B	
C3B	6028C3B	6029C3B	
D2B	6028D2B	6029D2B	
D3B	6028D3B	6029D3B	
White	6028WB	6029WB	
Extra White	6028XWB	6029XWB	
Filtek Supreme Ultra Universal Restorative Enamel Refills			
A1E	6028A1E	6029A1E	
A2E	6028A2E	6029A2E	
A3E	6028A3E	6029A3E	
B1E	6028B1E	6029B1E	
B2E	6028B2E	6029B2E	
D2E	6028D2E	6029D2E	
White	6028WE	6029WE	
Extra White	6028XWE	6029XWE	
Filtek Supreme Ultra Universal Restorative Translucent Refills			
Clear	6028CT	6029CT	
Blue	6028BT	6029BT	
Gray	6028GT	6029GT	
Amber	6028AT	6029AT	

SYRINGE SHADE REFILLS include 1 – 4g syringe; CAPSULE SHADE REFILLS: Dentin, Enamel and Translucent Shade Refills include 10 – 0.2g capsules; Body Shade Refills include 20 – 0.2g capsules.

Filtek™ Supreme Ultra Flowable Restorative

The dental flowable composite that is a dependable companion with many uses...it flows when you want it...stays where you need it.

Indications

- Class III and V restorations.
- Restoration of minimally invasive cavity preparations (including small, non stress-bearing occlusal restorations).
- Base/liner under direct restorations.
- Repair of small defects in esthetic indirect restorations.
- Pit and fissure sealant.
- Undercut blockout.
- Repair of resin and acrylic temporary restorations.

Product Benefits

- Versatile formula is ideal for multiple indications.
- Unique nanotechnology for excellent esthetics and low wear.*
- Unsurpassed polish retention.*
- Flow-on-demand handling dentists prefer.
- The perfect companion to our leading composite Filtek™ Supreme Ultra Universal Restorative.
- Available in capsule or syringe delivery and in 12 shades: A1, A2, A3, A3.5, A4, B1, B2, C2, D2, White, Extra White and Opaque A3.

*Versus competitive materials tested. In vitro data on file.



Product Information		Item Number
Shade	Syringe	Capsule
Filtek Supreme Ultra Flowable Restorative Refills		
A1	6032A1	6033A1
A2	6032A2	6033A2
A3	6032A3	6033A3
A3.5	6032A3.5	6033A3.5
A4	6032A4	6033A4
B1	6032B1	6033B1
B2	6032B2	6033B2
C2	6032C2	6033C2
D2	6032D2	6033D2
White	6032W	6033W
Extra White	6032XW	6033XW
OA3	6032OA3	6033OA3
Filtek Supreme Ultra Flowable Restorative Accessory		
20 – Dispensing Tips (20 Gauge).....		3700T

SYRINGE SHADE REFILLS include 2 – 2g syringes; 20 dispensing tips.
 CAPSULE SHADE REFILLS include 20 – 0.2g capsules.

Filtek™ Z250 Universal Restorative

Speed and convenience in a universal dental composite resin that provides exceptional handling, long-lasting esthetic results, and is available in 12 shades.

Indications

- Direct anterior and posterior restorations.
- Core buildup.
- Splinting.
- Indirect restorations including inlays, onlays and veneers.

Product Benefits

- Low polymerization shrinkage for less stress on the tooth and less potential for patient sensitivity.
- Speed and convenience: easy to use, fast placement technique, and easy to finish to a smooth surface.
- Excellent handling with exceptional resistance to slumping.
- Strong, long-lasting and natural-looking results.
- Outstanding versatility for any area of the mouth.
- Excellent esthetics—available in 12 shades to meet your needs: A1, A2, A3, A3.5, A4, B1, B2, B3, C2, D3, Incisal and Universal Dentin.



Product Information

Item Number

Shade	Syringe	Capsule
Filtek Z250 Universal Restorative Refills		
A1	6020A1	6021A1
A2	6020A2	6021A2
A3	6020A3	6021A3
A3.5	6020A3.5	6021A3.5
A4	6020A4	6021A4
B1	6020B1	6021B1
B2	6020B2	6021B2
B3	6020B3	6021B3
C2	6020C2	6021C2
D3	6020D3	6021D3
Incisal	6020I	6021I
Universal Dentin	6020UD	6021UD

SYRINGE REFILLS contain 1 – 4g syringe.

CAPSULE REFILLS contain 20 – 0.2g capsules.

Z100™ Restorative

A light-cured hybrid composite resin with a 19-year clinical history for use in both anterior and posterior restorations.

Indications

- Z100 Restorative is indicated for anterior and posterior restorations (direct and indirect, including occlusal surfaces).

Product Benefits

- Unique, single filler is 100% zirconia/silica which allows more particles per gram of paste, resulting in excellent strength and wear resistance.
- Excellent handling characteristics allow for easy placement and a lack of resin stickiness so the material will release easily from your instrument.
- Addresses the opacities of both dentin and enamel, minimizing shade-matching guesswork and allowing better blending with natural tooth color for superior esthetic results.
- Available in unit-dose (capsule) or multi-dose (syringe) delivery, and in 11 shades: A1, A2, A3, A3.5, A4, B2, B3, C2, Pedo, Cervical Yellow and Universal Dentin.
- Versatile material is ideal for both anterior and posterior restorations.



Product Information

Item Number

Shade	Syringe	Capsule
Z100 Restorative Refills		
A1	5904A1	5905A1
A2	5904A2	5905A2
A3	5904A3	5905A3
A3.5	5904A3.5	5905A3.5
A4	5904A4	5905A4
B2	5904B2	5905B2
B3	5904B3	5905B3
C2	5904C2	5905C2
Universal Dentin	5906UD	5907UD
Pedo	5906P	5907P
Cervical Yellow	5906CY	5907CY

SYRINGE REFILLS contain 1 – 4g syringe.
CAPSULE REFILLS contain 18 – 0.2g capsules.

Paradigm™ Nano Hybrid Universal Restorative

Paradigm™ Nano Hybrid Universal Restorative offers an everyday, easy-to-use restorative, designed with a good balance of the straightforward features you rely on most.

Indications

- Direct anterior and posterior restorations including occlusal surfaces.
- Core buildups.
- Splinting.
- Indirect restorations including inlays, onlays and veneers.

Product Benefits

- Easy to polish.
- 12 shades that cover most dentists' daily needs.
- Fluoresces.
- Great handling without slumping or sticking to instruments.
- Easy to use in posterior and anterior restorations.
- Good fracture toughness, strength and wear resistance.
- Easy to adapt to cavity.
- Radiopaque.



Product Information

Item Number

Shade	Syringe	Capsule
Paradigm Nano Hybrid Universal Restorative Refills		
A1	1480A1	1481A1
A2	1480A2	1481A2
A3	1480A3	1481A3
A3.5	1480A3.5	1481A3.5
A4	1480A4	1481A4
B1	1480B1	1481B1
B2	1480B2	1481B2
B3	1480B3	1481B3
C2	1480C2	1481C2
D3	1480D3	1481D3
OA2	1480OA2	1481OA2
OA3	1480OA3	1481OA3

SYRINGE REFILLS contain 1 – 3g syringe.

CAPSULE REFILLS contain 20 – 0.2g capsules.

Filtek™ LS Low Shrink Posterior Restorative System

The first composite to shrink less than 1%, Filtek™ LS Low Shrink Posterior Restorative is based on 3M ESPE's breakthrough technology using silorane chemistry.

Indications

- Direct posterior dental restoration of the cavity Classes I and II.
- Filtek LS restorative and 3M™ ESPE™ LS System Adhesive can be used together with glass ionomer cements or resin-modified glass ionomer cements as cavity liners or bases.

Product Benefits

- First composite to shrink less than 1%.
- Excellent marginal integrity.
- Up to 6 minutes operator light stability.
- Easy to handle; nonsticky; excellent ability to hold shape.
- Strong and durable.
- Low water sorption for substantially decreased exogenous staining.
- Dedicated self-etch adhesive with excellent bond strength.
- Radiopaque.
- Available in 3 shades: A2, A3, C2 (capsule or syringe).

Note: Filtek LS Low Shrink Posterior Restorative must be used with the LS System Adhesive.



Product Information

Item Number

Filtek LS Low Shrink Posterior Restorative System Capsule Trial Kit	4901TK
20 – 0.2g Capsules; Shade A2	
1 – 5ml LS System Adhesive Self-Etch Primer Vial	
1 – 5ml LS System Adhesive Bond Vial	
100 – Microbrushes (50 Black, 50 Green)	
1 – Mixing Well	
Filtek LS Low Shrink Posterior Restorative System Syringe Trial Kit	4902TK
1 – 4g Syringe; Shade A2	
1 – 5ml LS System Adhesive Self-Etch Primer Vial	
1 – 5ml LS System Adhesive Bond Vial	
100 – Microbrushes (50 Black, 50 Green)	
1 – Mixing Well	
Filtek LS Low Shrink Posterior Restorative System Refills	
20 – 0.2g Capsules, Shade A2	4901A2
20 – 0.2g Capsules, Shade A3	4901A3
20 – 0.2g Capsules, Shade C2	4901C2
1 – 4g Syringe, Shade A2	4902A2
1 – 4g Syringe, Shade A3	4902A3
1 – 4g Syringe, Shade C2	4902C2
LS System Adhesive Refills	
1 – 5ml Self-Etch Primer Vial	
1 – 5ml Bond Vial	
100 Microbrushes (50 Black, 50 Green)	4903
1 – 5ml Self-Etch Primer Vial	4903P
1 – 5ml Bond Vial	4903B

Filtek™ P60 Posterior Restorative

With a rapid cure time, easy handling and fast placement, you can rely on Filtek™ P60 Posterior Restorative for excellent results.

Indications

- Direct posterior restorations.
- Core buildup.
- Splinting.
- Indirect restorations including inlays, onlays and veneers.

Product Benefits

- Superior packability—packs well without sticking to instruments.
- Easy sculpting with exceptional resistance to slumping.
- Excellent marginal adaptation and interproximal contact.
- Fast placement technique takes only 20 seconds to cure an increment of 2.5 mm.
- Low polymerization shrinkage means less stress on the tooth and less potential for patient sensitivity.
- Excellent wear resistance and strength means you can be confident of long-lasting posterior restorations.



Product Information

Item Number

Filtek P60 Posterior Restorative Intro Kit	4720
1 – 4g Syringe each of Shades A3, B2, C2	
1 – 3g Vial Adper™ Single Bond Plus Dental Adhesive	
1 – 3ml Scotchbond™ Phosphoric Etchant Syringe	
Etchant Tips; 2 Brush Handles; Fiber Tip Applicators	
48 Disposable Mixing Wells; Mix Pad; Shade Guide	
Filtek P60 Posterior Restorative Refills	
1 – 4g Syringe, Shade A3	4720A3
1 – 4g Syringe, Shade B2	4720B2
1 – 4g Syringe, Shade C2	4720C2

F2000 Compomer Restorative

A compomer restorative system that combines attributes of glass ionomers and composites into an easy-to-use, single-paste product.

Indications

- Class III cavities.
- Class V cavities and cervical erosion/abrasion lesions.
- Root caries lesions.
- Class I and II cavities in primary teeth.
- Class II laminate or open sandwich technique.
- Core buildup.
- Class I and II restorations in permanent teeth, provided the width of the cavity is less than two-thirds of the intercuspal distance.

Product Benefits

- Excellent handling characteristics and fast, easy placement to save time.
- High level of fluoride release not available in traditional composites.
- Versatile compomer is indicated for restoring a variety of cavity classifications in adult and primary teeth.
- Can be used with conventional dental adhesives or the 3M™ ESPE™ F2000 Compomer Primer/Adhesive.
- F2000 compomer primer/adhesive in the unique Clicker™ Dispenser offers a no-etch system with one-step bonding that is moisture-tolerant.
- Available in unit-dose capsule delivery and in 9 shades: A2, A3, A3.5, A4, B2, B3, C2, Pedo and Blue (Core Buildup).



Product Information

Item Number

Shade	Capsule
F2000 Compomer Restorative Refills	
A2	2021A2
A3	2021A3
A3.5	2021A3.5
A4	2021A4
B2	2021B2
B3	2021B3
C2	2021C2
Pedo	2021P
Blue	2021BLUE

F2000 Compomer Primer/Adhesive Refill

1 – 2.6ml Primer/Adhesive in Clicker Dispenser2024

CAPSULE REFILLS contain 20 – 0.2g capsules.

Concise™ Composite

A self-cure, esthetic anterior restorative material based on a quartz filler.

Indications

- Class III restorations.
- Class V restorations.
- Limited use in Class I restorations in premolars.
- Selected Class IV restorations where esthetics are of primary importance.

Product Benefits

- Strong, esthetic and long-lasting anterior restorative.
- Chemically activated, self-cure restorative.



Product Information

Item Number

Concise Composite System	1925
1 – 16g Paste A Universal Shade	
1 – 16g Paste B	
10 – Mixing Pads	
50 – Mixing Sticks	

Ketac™ Nano Light-Curing Glass Ionomer Restorative

Ketac™ Nano Light-Curing Glass Ionomer Restorative is the world's first nano-ionomer—and a breakthrough in glass ionomer restoratives.

Indications

- Primary teeth restorations.
- Transitional restorations.
- Small Class I restorations.
- Laminate/Sandwich restorations.
- Class III and V restorations.
- Filling defects and undercuts.
- Core buildups (>50% coronal tooth intact).

Product Benefits

- The first paste/paste, resin-modified glass ionomer (RMGI) restorative based on bonded nanofiller technology.
- Esthetic glass ionomer restorative.
- High fluoride release.
- Improved wear resistance.
- Light cure on demand.
- Radiopaque.
- Available in six shades: A1, A2, A3, A3.5, A4, B2.
- Automatic mixing for fast dispensing from the unit-dose Quick Mix Capsule.
- Also available in our Clicker™ Dispenser.



Product Information	Item Number
Ketac Nano Light-Curing Glass Ionomer Restorative Quick Mix Capsule Trial Kit	
10 – A2 Quick Mix Capsules	3305TK
10 – A3 Quick Mix Capsules	
1 – 6.5ml Primer	
Ketac Nano Light-Curing Glass Ionomer Restorative Quick Mix Capsule Refills	
20 – Quick Mix Capsules A1 Shade	3305A1
20 – Quick Mix Capsules A2 Shade	3305A2
20 – Quick Mix Capsules A3 Shade	3305A3
20 – Quick Mix Capsules A3.5 Shade	3305A3.5
20 – Quick Mix Capsules A4 Shade	3305A4
20 – Quick Mix Capsules B2 Shade	3305B2

Product Information	Item Number
Ketac Nano Light-Curing Glass Ionomer Restorative Intro Kit	
2 – 12g Clicker Dispenser: A1, A3	33041
1 – 6.5ml Vial Ketac Nano Primer	
50 – Delivery Tips with Pistons	
1 – Small Mix Pad	
50 – Fiber Tips	
1 – Applicator Handle	
48 – Disposable Mix Wells	
Ketac Nano Light-Curing Glass Ionomer Restorative Clicker Dispenser Trial Kit	3304TK
1 – 12g Clicker Dispenser A2 Shade	
1 – 6.5ml Vial Ketac Nano Primer	
10 – Delivery Tips With Pistons	
Ketac Nano Light-Curing Glass Ionomer Restorative Clicker Dispenser Refills	
1 – 12g Clicker Dispenser A1 Shade	3304A1
1 – 12g Clicker Dispenser A2 Shade	3304A2
1 – 12g Clicker Dispenser A3 Shade	3304A3
1 – 12g Clicker Dispenser A3.5 Shade	3304A3.5
1 – 12g Clicker Dispenser B2 Shade	3304B2
1 – 6.5ml Vial Primer	3304P
Ketac Nano Light-Curing Glass Ionomer Restorative Refill	
1 – 6.5ml Vial Primer	3304P

Ketac™ Molar Aplicap™ Glass Ionomer Restorative

This fluoride-releasing, packable material offers high compressive strength and excellent handling characteristics.

Indications

- Primary teeth fillings.
- Single surface fillings in non-occlusal areas.
- Cervical fillings in posterior region.
- Base material for single- and multiple-surface composite fillings.
- Core buildups prior to crown placement.

Product Benefits

- High compressive strength.
- Minimal abrasion.
- Excellent handling characteristics: plastic contouring and condensing properties similar to amalgam.
- Aplicap capsule provides consistent quality, simplified handling and a nozzle for direct application of the material.
- Available in four shades.



Product Information

Item Number

Ketac Molar Aplicap Glass Ionomer Restorative Refills

50 – Capsules, Assorted (10 each of A1, A4, DY0; 20 of A3)	56410
50 – A1 Shade Capsules	56430
50 – A3 Shade Capsules	56420
20 – A4 Shade Capsules	56440

The applicable quantity of an Aplicap capsule is approximately 0.1 ml.

Ketac™ Molar Quick Aplicap™ Glass Ionomer Restorative

Ketac Molar Quick material is a bulk-fill, packable and fast-setting conventional glass ionomer. High compressive strength and marginal integrity make it a glass ionomer of choice for posterior restorations.

Indications

- Primary teeth fillings.
- Single surface fillings in non-occlusal areas.
- Cervical fillings in posterior region.
- Base material for single- and multiple-surface composite fillings.
- Core buildups prior to crown placement.
- Minimally Invasive Dentistry (MID).

Product Benefits

- High compressive strength.
- Minimal abrasion.
- Excellent handling characteristics: plastic contouring and condensing properties similar to amalgam.
- Aplicap capsule provides consistent quality, simplified handling and a long nozzle for direct application of the material.
- Available in five shades.



Product Information

Item Number

Ketac Molar Quick Aplicap Glass Ionomer Restorative Refills

50 – Capsules, Assorted (10 each of A1, A2, A3, A4, B2)	.56369
50 – A1 Shade Capsules	.56366
50 – A2 Shade Capsules	.56363
50 – A3 Shade Capsules	.56364

The applicable quantity of an Aplicap capsule is approximately 0.1 ml.

Ketac™ Fil Plus Aplicap™ Glass Ionomer Restorative

This radiopaque conventional glass ionomer filling material in the unique Aplicap delivery system offers high fluoride release and helps you achieve virtually invisible anterior restorations.

Indications

- Class III and Class V restorations.
- Small Class I fillings.
- Wedge-shaped defects.
- Core buildups.

Product Benefits

- Provides molecular bond to enamel and dentin to guarantee a tight marginal seal.
- Offers high fluoride release.
- Radiopaque.
- Consistent, easy and unit-dose dispensing with high visibility during placement.
- Minimal preparation.
- Available in eight esthetic shades to better match existing tooth structure.



Product Information

Item Number

Ketac Fil Plus Aplicap Glass Ionomer Restorative Intro Kit	55000
50 – Aplicap Capsules: 20 Capsules of Shade A2; 10 Capsules each of Shades A3, A3.5, and A4 Activator; Applier; Ketac™ Conditioner; Ketac™ Glaze; Mixing Pad	
Ketac Fil Plus Aplicap Glass Ionomer Restorative Refills	
50 – Capsules, Assorted	55010
(20 – A2; 10 each of A3, A3.5 and A4)	
50 – A1 Shade Capsules	55020
50 – A2 Shade Capsules	55030
50 – A3 Shade Capsules	55040
50 – A3.5 Shade Capsules	55050
50 – A4 Shade Capsules	55060
50 – C2 Shade Capsules	55070
50 – C3 Shade Capsules	55080
50 – DGO Shade Capsules	55090

The applicable quantity of an Aplicap capsule is approximately 0.1 ml.

Ketac™ Silver Glass Ionomer Restorative

This silver glass ionomer contains no amalgam and offers high, long-term fluoride release as well as adhesion to enamel and dentin to ensure sealed, lasting restorations without the need for undercuts.

Indications

- Core buildups.
- Primary teeth fillings.
- Small fillings in posterior teeth.
- Base under amalgams.
- Temporary restorations.

Product Benefits

- Silver particles are sintered into the glass using a 3M ESPE process, which makes Ketac Silver glass ionomer restorative an excellent thermal and electrical insulator.
- Offers high, sustained fluoride release.
- Contains no amalgam.
- Aplicap™ and Maxicap™ delivery systems provide accurate, consistent mixing and easy dispensing.
- Maxicap delivery system is indicated for extended core buildups.



Product Information

Item Number

Ketac Silver Glass Ionomer Restorative Handmix Intro Kit	37800
1 – 25g Powder	
1 – 12ml Liquid	
1 – Mixing Pad	
Ketac Silver Glass Ionomer Restorative Handmix Refills	
1 – 25g Powder	37810
1 – 12ml Liquid	37820
Ketac Silver Aplicap Glass Ionomer Restorative Intro Kit	37006
50 – Aplicap Capsules	
Activator; Applier; Ketac™ Conditioner;	
Ketac™ Glaze; Mixing Pad	
Ketac Silver Aplicap Glass Ionomer Restorative Refill	37010
50 – Capsules	
Ketac Silver Maxicap Glass Ionomer Restorative Intro Kit	56203
50 – Maxicap Capsules	
Activator; Applier; Ketac™ Conditioner;	
Ketac™ Glaze; Mixing Pad	
Ketac Silver Maxicap Glass Ionomer Restorative Refill	56210
50 – Capsules	

The applicable quantity of an Aplicap capsule is approximately 0.1 ml.
The applicable quantity of a Maxicap capsule is approximately 0.4 ml.

Ketac™ Conditioner

A conditioner for the pretreatment of dentin, Ketac conditioner pretreatment solution removes the dentin smear layer associated with tooth preparation procedures.

Indications

- Removing the dentin smear layer during tooth preparation procedures.
- For use with: Ketac™ Molar Quick Glass Ionomer Restorative, Ketac™ Molar Quick Aplicap™ Glass Ionomer Restorative, Ketac™ Fil Plus Aplicap™ Glass Ionomer Restorative and Ketac™ Silver Glass Ionomer Restorative as part of the procedure.

Product Benefits

- Removes the dentin smear layer associated with tooth preparation procedures.



Product Information

Item Number

Ketac Conditioner Refill

1 – 10ml Liquid Vial37470

Ketac™ Glaze

A light-cured varnish that protects glass ionomer restorations from moisture and saliva during setting.

Indications

- For use with: Ketac™ Molar Quick Glass Ionomer Restorative, Ketac™ Molar Quick Aplicap™ Glass Ionomer Restorative, Ketac™ Fil Plus Aplicap™ Glass Ionomer Restorative and Ketac™ Silver Glass Ionomer Restorative as part of the procedure.



Product Information

Item Number

Ketac Glaze Refill

1 – 2.5g Vial37190

Glass Ionomer Accessories

For more information on the RotoMix™ Capsule Mixing Unit, see page 96.



Product Information

Item Number

Glass Ionomer Accessories

Mixing Pads (4 Large)1961P
 Mixing Pads (10 Small)70128
 Mixing Pads (10 Universal)70144
 Aplicap™ Activator73040
 Aplicap™ Applier73050
 Maxicap™ Activator73060
 Maxicap™ Applier73070
 Aplicap Activator/Applier Combination Pack37160
 Maxicap Activator/Applier Combination Pack37180
 RotoMix Capsule Mixing Unit76310

Photac™ Fil Quick Aplicap™ Light-Cured Glass Ionomer Restorative

Photac Fil Quick material is a fluoride-releasing, resin-modified glass ionomer. Its self-adhesive property eliminates the need for bonding and cavity conditioning. The result is a fast and easy solution for treating anxious pediatric and geriatric patients.

Indications

- Class III and Class IV restorations.
- Small Class I restorations.
- Primary tooth restorations.
- Temporary restorations.

Product Benefits

- Dual cure provides light-cure control and the assurance of a complete cure.
- High fluoride release.
- Excellent mechanical properties, plus it's radiopaque and biocompatible.
- Convenience, simplicity and accuracy of the Aplicap delivery system.
- Esthetic versatility of eight shades.
- Conservative cavity preparation, fluoride release and fast, easy technique make it ideal for geriatric and pediatric patients.



Product Information

Item Number

Photac Fil Quick Aplicap Light-Cured Glass Ionomer Restorative Intro Kit	61000
50 – Aplicap Capsules: 10 each of A3 and A3.5 5 each of A1, A2, B2, B3, C4 and DBO Activator; Applier; Mixing Pad	
Photac Fil Quick Aplicap Light-Cured Glass Ionomer Restorative Refills	
20 – A1 Shade Capsules	61010
50 – A2 Shade Capsules	61020
50 – A3 Shade Capsules	61030
50 – A3.5 Shade Capsules	61060
50 – B2 Shade Capsules	61050
50 – B3 Shade Capsules	61040
20 – C4 Shade Capsules	61070
20 – DBO – Dark Brown Opaque Shade Capsules	61080
50 – Capsules, Assorted	61090
(10 each of A3, A3.5; 5 each of A1, A2, B2, B3, C4, DBO)	

The applicable quantity of an Aplicap capsule is approximately 0.1 ml.

Vitremer™ Core Buildup/Restorative

An advanced glass ionomer system that offers a three-way cure to meet your needs for core buildup and restorative applications.

Indications

- Class III and Class V restorations.
- Root caries.
- Pediatric Class I or II restorations.
- Base/liner.
- Class II laminate or open sandwich.
- Core buildup.

Product Benefits

- Versatile system can be light-cured or self-cured to meet your application needs.
- Unique dark-cure chemistry allows for bulk placement, which eliminates the need for layering and saves time.
- Displays a true glass ionomer cure for long-term fluoride release and adhesion to tooth structure, which provides increased dentist confidence.
- As a restorative material, it provides good handling properties and extended working time in the mouth for easier use.
- Available in a variety of shades to better match existing tooth structure for esthetic restorations. Pedo shade is available for pedodontic applications and Blue shade for core buildup applications.



Product Information	Item Number
---------------------	-------------

Vitremer Core Buildup/Restorative Intro Kit	3303I
1 – 5g Powder each of A3, A4, C2, C4, PEDO and BLUE	
2 – 8ml Liquid	
1 – 6.5ml Primer	
1 – 6.5ml Finishing Gloss	
Shade Guide and Accessories	
Vitremer Core Buildup/Restorative Trial Kit	3303MPA3
1 – 5g Powder of A3 Shade	
2.5ml Liquid; 2ml Primer; 2ml Finishing Gloss,	
Delivery Tips with Pistons, 10 each	
Spoon and Mixing Pad	
Vitremer Core Buildup/Restorative Trial Kit	3303MPB
1 – 5g Powder of Blue Shade	
2.5ml Liquid; 2ml Primer;	
Delivery Tips with Pistons, 10 each	
Spoon and Mixing Pad	
Vitremer Core Buildup/Restorative Trial Kit	3303MPP
1 – 5g Powder of Pedo Shade	
2.5ml Liquid; 2ml Primer; 2ml Finishing Gloss;	
Delivery Tips with Pistons, 10 each	
Spoon and Mixing Pad	

Product Information	Item Number
---------------------	-------------

Vitremer Core Buildup Restorative Refills	
1 – 9g A3 Shade Powder, Spoon	3303A3
1 – 9g A3.5 Shade Powder, Spoon.	3303A3.5
1 – 9g A4 Shade Powder, Spoon	3303A4
1 – 9g B2 Shade Powder, Spoon	3303B2
1 – 9g B3 Shade Powder, Spoon	3303B3
1 – 9g C2 Shade Powder, Spoon	3303C2
1 – 9g C4 Shade Powder, Spoon	3303C4
1 – 9g PEDO Shade Powder, Spoon	3303PEDO
1 – 9g BLUE Shade Powder, Spoon	3303BLUE
1 – 8ml Liquid Vial	3303L
1 – 6.5ml Primer Vial	3303P
1 – 6.5ml Finishing Gloss Vial	3303FG
50 – Delivery Tips with Pistons	3303DT

Vitrebond™ Plus Light Cure Glass Ionomer Liner/Base

This convenient paste-liquid formula in our unique Clicker™ Dispenser offers the protection of a conventional glass ionomer liner without the mess of measuring.

Indications

- Liner/base under direct and indirect restorations, including composite, amalgam, ceramic and metal restorations.

Product Benefits

- Faster, easier dispensing and the right mix every time.
- Convenient paste-liquid formula offers the protection of a conventional glass ionomer liner without the mess of measuring.
- Award-winning Clicker dispenser assures a consistent mix.
- Helps protect against post-op sensitivity: offers a strong bond to dentin, sealing the tooth structure to protect against microleakage.
- Low microleakage comparable to original Vitrebond™ Liner/Base.
- Shows greater ability to reduce the effect of polymerization shrinkage than GC Fuji Lining LC and flowable liners.*
- Fluoride release of a true glass ionomer.
- Excellent handling characteristics for easy placement.
- Cures in 20 seconds – a faster curing time than powder-liquid formulas.
- Delivers excellent adhesion with any dental adhesive system.
- Radiopaque.
- No additional hardware required.



Product Information

Item Number

Vitrebond Plus Light Cure Glass Ionomer Liner/Base Single Pack	7571
1 – 10g Clicker Dispenser	
1 – Large Mix Pad	
Vitrebond Plus Light Cure Glass Ionomer Liner/Base Double Pack	7572
2 – 10g Clicker Dispensers	
1 – Large Mix Pad	

Each Clicker contains approximately 10.0 grams of material.

*When tested using Filtek™ Z250 Universal Restorative.

Vitrebond™ Light Cure Glass Ionomer Liner/Base

A light cure glass ionomer liner/base that combines light cure convenience with true glass ionomer fluoride release and bond strength.

Indications

- Under direct and indirect restorations, including composite, amalgam, ceramic and metal restorations.

Product Benefits

- Fast technique and excellent handling characteristics allow for quick and easy placement.
- Forms a strong bond to dentin, sealing the tooth to reduce the incidence of microleakage, which helps reduce post-operative sensitivity.
- Produces zones of inhibition against bacteria commonly found in the oral cavity in vitro.
- Sustained fluoride release to help protect the tooth long after the restoration is complete.
- Provides excellent adhesion to 3M ESPE dental adhesive systems, whether using composite or amalgam.



Product Information

Item Number

Vitrebond Light Cure Glass Ionomer Liner/Base Intro Kit	7510
1 – 9g Powder	
1 – 5.5ml Liquid	
Spoon; Mixing Pads	
Vitrebond Light Cure Glass Ionomer Liner/Base Refills	
1 – 9g Powder	7512P
1 – 5.5ml Liquid	7512L

Ketac™ Bond and Ketac™ Bond Aplicap™ Glass Ionomer Base Material

A radiopaque glass ionomer cavity liner that offers high, long-term fluoride release and molecular adhesion to enamel and dentin for better marginal integrity.

Indications

- Lining cavities.

Product Benefits

- Adheres molecularly to enamel and dentin for marginal integrity.
- Offers high, long-term fluoride release.
- High radiopacity.
- Aplicap™ capsule provides consistent quality and simplifies practical handling considerably.
- Aplicap capsule provides accurate, consistent mixing with easy placement.



Product Information

Item Number

Ketac Bond Glass Ionomer Base Material Refills

1 – 12ml Bond Liquid	37320
1 – 10g Powder, Yellow	37330

Ketac Bond Aplicap Glass Ionomer Base Material Refill

50 – Yellow Shade Capsules	37350
--------------------------------------	-------

Elipar™ S10 Curing Light

The latest advancement in LED curing technology from 3M ESPE redefines strength, durability and hygiene, while inspiring confidence during any curing procedure.

Indications

- Polymerization of light-curing dental materials with photo initiator for the wavelength range 430-480nm.

Product Benefits

- One-piece stainless steel casing is extraordinarily robust and easy to disinfect.
- Unique, ergonomic V-shape provides a comfortable grip from any angle.
- One-shot cure with up to 50% more optical power and up to 80% more curing surface compared to leading devices tested.
- Faster, deeper cure.
- Simple two-button operation with one cure mode for all indications.
- Tack cure function allows for predictable curing with a reproducible short light output.
- Silent operation—innovative design eliminates noisy fan, and includes option to turn off beep signals.
- Two light guides, both offering consistently high and focused light output.



Product Information	Item Number
Elipar S10 Curing Light	76952
Handpiece; Charging Base (120V); Li-ion Battery; 10mm Light Guide; Eye Shield	
Elipar S10 Curing Light Accessories	
1 – Elipar S10 Light Guide (10mm)	76958
1 – Elipar S10 Light Guide (3mm)	76959
1 – Elipar S10 Eye Shield	76957
1 – Elipar S10 Rechargeable Battery	76956

Sof-Lex™ Finishing and Polishing System

An easy-to-use, color-coded system designed to simplify your finishing and polishing procedures.

Indications

- Finishing and polishing composite, ceramic and glass ionomer dental restorations.

Product Benefits

- Easy-to-use system allows you to create high-luster restorations that offer lifelike esthetics.
- Discs are color coded to allow for easy identification of grit sequence.
- Pop-on disc technology makes changing discs easier to save you time.
- Pop-on discs conform to the contours of the teeth for easier finishing and polishing.
- Extra-thin (XT) discs allow for easier access to interproximal surfaces while offering a slightly stiffer disc.



Product Information

Item Number

Sof-Lex Finishing and Polishing System Intro Kit	2385P
240 – Contouring and Polishing Discs	
240 – Extra-Thin Contouring and Polishing Discs	
45 – Finishing and Polishing Strips	
1 – RA Mandrel	

Sof-Lex™ Contouring and Polishing Discs

Product Information	Item Number
Sof-Lex Contouring and Polishing Disc Intro Kit	1980
30 each – Discs in Coarse, Medium, Fine and Superfine Grits in Both 1/2" and 3/8" Diameters	
1 – RA Mandrel	
Sof-Lex Contouring and Polishing Disc Refills	
85 – 3/8" Discs, Coarse	1981C
85 – 3/8" Discs, Medium	1981M
85 – 3/8" Discs, Fine	1981F
85 – 3/8" Discs, Superfine	1981SF
85 – 1/2" Discs, Coarse	1982C
85 – 1/2" Discs, Medium	1982M
85 – 1/2" Discs, Fine	1982F
85 – 1/2" Discs, Superfine	1982SF
3 – RA Mandrels	1983RA
3 – HP Mandrels	1983HP
3 – FG Mandrels	1983FG



Sof-Lex™ Extra-Thin Contouring and Polishing Discs

Product Information	Item Number
Sof-Lex Extra-Thin Contouring and Polishing Disc Intro Kit	2380
30 each – XT Discs in Coarse, Medium, Fine and Superfine Grits in both 1/2" and 3/8" Diameters	
1 – RA Mandrel	
Sof-Lex Extra-Thin Contouring and Polishing Disc Refills	
85 – 3/8" XT Discs, Coarse	2381C
85 – 3/8" XT Discs, Medium	2381M
85 – 3/8" XT Discs, Fine	2381F
85 – 3/8" XT Discs, Superfine	2381SF
85 – 1/2" XT Discs, Coarse	2382C
85 – 1/2" XT Discs, Medium	2382M
85 – 1/2" XT Discs, Fine	2382F
85 – 1/2" XT Discs, Superfine	2382SF
3 – RA Mandrels	1983RA
3 – HP Mandrels	1983HP
3 – FG Mandrels	1983FG



Sof-Lex™ Square Eyelet Discs

Product Information	Item Number
Sof-Lex Square Eyelet Disc Refills	
100 – 5/8" Square Eyelet Discs, Coarse	1958C
100 – 5/8" Square Eyelet Discs, Medium	1958M
100 – 5/8" Square Eyelet Discs, Fine	1958F
100 – 5/8" Square Eyelet Discs, Superfine	1958SF

Sof-Lex™ Finishing Strips

Sof-Lex™ Finishing Strips are designed to produce a smooth restoration surface to help prevent interproximal plaque buildup for superior finishing and polishing results.

Indications

- Finishing and polishing composite, ceramic and glass ionomer dental restorations.

Product Benefits

- Easy-to-use system to create smooth proximal surfaces.
- Strips are gapped at their centers for easy interproximal insertion.
- Precision-coated with an aluminum oxide grit to produce a smooth restoration surface that helps prevent interproximal plaque buildup.
- Unique narrow strip is available for easier use in short interproximal areas.



Product Information

Item Number

Sof-Lex Finishing Strips

150 – 7" x 5/32" Strips, Coarse/Medium	1954
100 – 7" x 5/64" Strips, Coarse/Medium-Narrow	1954N
120 – 7" x 5/32" Strips, Fine/Superfine.	1956

Cavit™ Temporary Filling Materials

A self-cured temporary sealing compound for temporary restoration of cavities.

Indications

- Cavit™ (high surface hardness):
Temporary filling of occlusion-loaded restorations.
- Cavit-W (reduced final hardness, increased adhesion):
Temporary filling after endodontic treatments.
- Cavit-G (removable completely without burs):
Inlay preparation.

Product Benefits

- Proven filling material for temporary fillings.
- Simple to apply with filling instrument.
- Quick and void-free curing in a moist environment.
- Slight expansion of the filling material ensures a well-sealed margin.



Product Information

Item Number

Cavit Temporary Filling Material Refills

Cavit, 1 – 28g Jar	44030
Cavit-W, 1 – 28g Jar	44130
Cavit-G, 1 – 28g Jar	44313
Cavit-G, 10 – 28g Jars/Box	44347
Cavit, 10 – 7g Tubes, 1 – Cavit Key	44351
Cavit-W, 10 – 7g Tubes, 1 – Cavit Key	44350
Cavit Key	71270

CoJet™ System

Adhesive system for intraoral adhesive repairs.

Indications

- Intraoral repair of fractured composite or porcelain, even with exposed metal.
- Extraoral pretreatment of inlays/onlays, veneers, crowns and bridges, and pins and posts for adhesive luting.

Product Benefits

- Blasting with the CoJet system embeds a ceramic layer on the surface of metal, porcelain or previously cured composite, producing dramatically enhanced bond strengths.
- Embedded ceramic layer enables silane coupling with composite for a true chemical bond with alloys and porcelain.
- Chairside intraoral technique allows for highly esthetic repair of porcelain or composite restorations and provides an economical alternative to replacing the restoration. Plus, repairs can be made in one session.



Product Information

Item Number

CoJet System Intro Kit	68421
40g Bottle CoJet Sand	
8ml Bottle 3M ESPE Sil Primer	
2.5ml Visio™ Bond	
5g Sinfony™ Opaquer Powder OA3	
8ml Sinfony Opaquer Liquid	
Brush Handles; Disposable Brush Tips; Step-By-Step Card	

CoJet System Refills

3 – 40g Bottles CoJet Sand	68411
1 – 8ml Bottle 3M ESPE Sil Primer	68300

Visio™ Bond

Bonding material for CoJet™ System.

Indications

- Intraoral repair of ceramic, metal and composite restorations.

Product Benefits

- When used with the CoJet system, Visio Bond bonding material allows for highly esthetic repair of porcelain or composite restorations.
- Provides an economical alternative to replacing the restoration.



Product Information

Item Number

Visio Bond Refill

1 – 2.5ml Bottle 42615

Restorative Accessories



Product Information	Item Number
---------------------	-------------

Restorative Accessories	
Restorative Dispenser – for Capsules	5707SD
Applicator Handles, 3 Color-Coded	1919
Handles/120 Disposable Brush Tips	
Disposable Applicator Brush Tips, 60/package	1919B
Fiber Tip Applicators, 100/bag	1919F
Etchant Dispensing Tips, 25/bag (not shown)	7523T
Bendable Applicator Brushes	3402
120/bag; 30 each of Blue, Green, Yellow, Red	
XS Applicator Brushes, 50/bag (not shown)	41904
Disposable Mini-Sponge Applicators	7522S
Approximately 200/box	
Polyester Matrix Tape and Dispenser	1939
Composite Placement Instrument	1948
10/box, Sizes 1, 2	
Mixing Sticks, 50/bag	1994S
Disposable White Mixing Wells, 96/box	3401W
Adper™ Scotchbond™ Multi-Purpose 3-Well Mixing Well, 4 each	7544
Mixing Pads, 4 Large	1961P
Mixing Pads, 10 Small	1994P

Vanish™ 5% Sodium Fluoride White Varnish with Tri-Calcium Phosphate (TCP)

A proprietary formula that contains fluoride, calcium and phosphate—components naturally found in saliva—Vanish™ 5% Sodium Fluoride White Varnish with TCP delivers targeted and sustained fluoride and calcium release.

Indications

- Treating hypersensitive teeth.
- Treating exposed dentin and root surface sensitivity.

Product Benefits

- The #1-selling fluoride varnish in the U.S.
- Now contains TCP, an exclusive calcium and phosphate ingredient.
- Contains 22,600 ppm fluoride.
- Flows better and reaches areas traditional varnishes may miss; covers more tooth surfaces.
- Easy to apply in seconds.
- Relieves hypersensitivity.



Product Information

Item Number

Vanish 5% Sodium Fluoride White Varnish

50 Pack – Cherry Flavor	12149C
50 Pack – Melon Flavor	12149L
50 Pack – Mint Flavor	12149M
100 Pack – Cherry Flavor	12150C
100 Pack – Melon Flavor	12150L
100 Pack – Mint Flavor	12150M
1000 Pack – Cherry Flavor	12151C
1000 Pack – Melon Flavor	12151L
1000 Pack – Mint Flavor	12151M
1000 Pack – Cherry & Melon Flavors	12151CL
1000 Pack – Assorted Flavors	12151X

Vanish™ XT Extended Contact Varnish

Vanish™ XT Extended Contact Varnish is great for protecting exposed, sensitive root surfaces, especially newly cleaned surfaces following scaling and root planing. It's a site-specific, light-cured, durable coating that forms an immediate layer of protection to relieve dentinal hypersensitivity.

Indications

- Treatment of exposed root surface sensitivity.
- Site-specific protective coating for newly erupted teeth and other tooth surfaces (e.g., around orthodontic brackets and acid erosion), including non-cavitated lesions.

Product Benefits

- Extended protection for up to 6 months.
- Releases fluoride, calcium and phosphate.
- Can be recharged with fluoride by using fluoride-containing products over the life of the product.
- Moisture tolerant: No need to dry or pretreat the root surface.
- Does not require the use of a rubber dam.
- Creates a protective barrier against demineralization and acid erosion.



Product Information

Item Number

Vanish XT Extended Contact Varnish

1 – 10g Clicker™ Dispenser	12148
--------------------------------------	-------

CavityShield™ 5% Sodium Fluoride Varnish

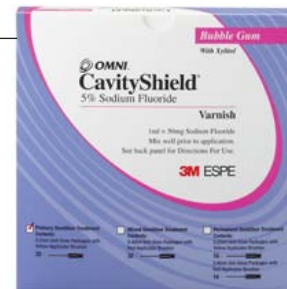
When you need a traditional fluoride varnish, depend on the world's first unit-dose varnish.

Indications

- Treating hypersensitive teeth.
- Treating exposed dentin and root surface sensitivity.

Product Benefits

- Color-coded brushes to quickly identify .25 ml and .40 ml doses.
- Contains 22,600 ppm fluoride.
- Enhanced asepsis.
- Two dosage sizes for patient safety.



Product Information

Item Number

CavityShield 5% Sodium Fluoride Varnish

Primary Dentition Clinic Pack	12140
Bubble Gum Flavor, (200 doses – .25ml each)	
Mixed Dentition Clinic Pack	12141
Bubble Gum Flavor, (200 doses – .40ml each)	
Primary Dentition Trial Pack	12142
Bubble Gum Flavor, (32 doses – .25ml each)	
Mixed Dentition Trial Pack	12143
Bubble Gum Flavor, (32 doses – .40ml each)	

Clinpro™ 5000 1.1% Sodium Fluoride Anti-Cavity Toothpaste

This prescription-strength toothpaste aids in caries prevention, helps strengthen enamel and helps reverse white spot lesions. Available in three flavors: Vanilla Mint, Bubble Gum and Spearmint.

Indications

- For use as part of a professional program for the prevention and control of dental caries.

Product Benefits

- Strengthens teeth better than leading brands.
- Remineralizes lesions throughout—not just on the surface.
- Delivers more fluoride to the tooth than other leading brands tested.
- Contains 1.1.% NaF (5000 ppm fluoride ion).
- Contains tri-calcium phosphate ingredient (TCP), so Clinpro 5000 toothpaste releases a high level of fluoride plus calcium and phosphate—components found naturally in saliva.
- Gentle cleaning, gentle whitening.
- Low abrasion.
- Replaces conventional toothpaste regimen.
- Available in a convenient 4 oz flip-top tube (approx. 6-month patient supply).
- Prescription only. Please see page 116 for full prescribing information.



Product Information

Item Number

Clinpro 5000 1.1% Sodium Fluoride Anti-Cavity Toothpaste

Vanilla Mint Flavor – 4 oz Tube (24 Tubes/Case)	12115
Bubble Gum Flavor – 4 oz Tube (24 Tubes/Case)	12115BG
Spearmint Flavor – 4 oz Tube (24 Tubes/Case)	12115SM

Clinpro™ Sealant

Clinpro™ Sealant offers smart color-change technology—it goes on pink for easy-to-see application, and cures to a natural white.

Indications

- Sealing enamel pits and fissures of teeth to aid in the prevention of cavities.

Product Benefits

- Smart color-change technology to see placement. It goes on pink and cures to a natural white.
- Low viscosity to flow easily into pits and fissures.
- Contains and releases fluoride.
- Bonds to enamel.
- Ideal for pediatric sealant applications.



Product Information

Item Number

Clinpro Sealant Intro Kit, Bottle	12621
2 – 6ml Bottles Sealant	
1 – 9ml Bottle Etchant	
2 – Brush Handles	
60 – Brush Tips	
50 – Fiber Tips	
1 – Mixing Well	
Instructions for Use	
Clinpro Sealant Intro Kit, Syringe	12626
2 – 1.2ml Syringes Sealant	
20 – Sealant Dispensing Tips, Black	
1 – 3ml Syringe Etchant	
25 – Etchant Dispensing Tips, Blue	
Instructions	
Clinpro Sealant and Adper Prompt Trial Kit	12626TP
1 – 1.2ml Clinpro Sealant Syringe	
10 – Sealant Syringe Tips, Black	
20 – L-Pop Applicators	
Clinpro Sealant Refills	
Clinpro Sealant Refill, Bottle.	12622
1 – 6ml Bottle Sealant	
Instructions	
Clinpro Sealant Refill, Syringe	12627
1 – 1.2ml Syringe Sealant	
10 – Sealant Dispensing Tips, Black	
Instructions	
10 – Sealant Dispensing Tips	12626T
4 – Sealant Mixing Well with Cover	12621MW

Peridex™ Chlorhexidine Gluconate 0.12% Oral Rinse

A Chlorhexidine Gluconate 0.12% oral rinse for use between dental visits as part of a professional program for the treatment of gingivitis.

Indications

- For use between dental visits as part of a professional program for the treatment of gingivitis as characterized by redness and swelling of the gingivae, including gingival bleeding upon probing.

Product Benefits

- Provides antimicrobial activity during oral rinsing.
- Reduces certain aerobic and anaerobic bacteria counts from a range of 54-97% through six months of use.
- Showed no significant changes in bacterial resistance or adverse changes in the oral microbial ecosystem.
- Prescription only. Please see page 117 for full prescribing information.



Product Information

Item Number

Peridex Chlorhexidine Gluconate 0.12% Oral Rinse

4 oz Bottle (48 Bottles/Case)	12134
16 oz Bottle (12 Bottles/Case)	12132
64 oz Bottle (4 Bottles/Case)	12133

The clinical significance of Peridex oral rinse's antimicrobial activities is not clear.

Three months after Peridex oral rinse was discontinued, the number of bacteria in plaque had returned to baseline levels and resistance of plaque bacteria to chlorhexidine gluconate was equal to that at baseline. Clinical effectiveness and safety of Peridex oral rinse has not been established in children under age 18.

Peridex oral rinse is indicated for use between dental visits as part of a professional program for the treatment of gingivitis. Patients with a known sensitivity to chlorhexidine gluconate should not use Peridex oral rinse. The effect of Peridex oral rinse on periodontitis has not been determined. Common side effects associated with the use of Peridex oral rinse include an increase in the staining of oral surfaces, an increase in calculus formation, and an alteration in taste perception. Please see page 117 for full prescribing information.

*Source: FDA Consumer Magazine, May-June 2002.

PerioMed™ 0.63% Stannous Fluoride Oral Rinse Concentrate

PerioMed 0.63% Stannous Fluoride Oral Rinse Concentrate provides antimicrobial activity for up to 8 hours, does not contain alcohol, and costs about the same as the leading over-the-counter mouthwashes.

Indications

- Dental caries prevention.
- Control of hypersensitivity.
- Control of gingival inflammation.

Product Benefits

- Stannous fluoride provides antimicrobial activity for up to 8 hours.
- Does not contain alcohol.
- Costs about the same as the leading over-the-counter mouthwashes.
- Helps control gum disease, tooth decay, tooth sensitivity and plaque bacteria for a healthier smile.



Product Information

Item Number

PerioMed 0.63% Stannous Fluoride Oral Rinse Concentrate

Mint Flavor	
10 oz Bottle With Pump (24 Bottles/Case)	12105M
Cinnamon Flavor	
10 oz Bottle With Pump (24 Bottles/Case)	12105C
Tropical Fruit Flavor	
10 oz Bottle With Pump (24 Bottles/Case)	12105F

OMNI Gel™ 0.4% Stannous Fluoride Brush-On Gel

For patients who prefer brush-on treatment, this proven therapeutic provides caries reduction, enhanced remineralization, and protection from decalcification for orthodontic patients.

Indications

- Dental caries reduction.
- Enhanced remineralization.
- Helps protect from decalcification for orthodontic patients.

Product Benefits

- For patients who prefer a brush-on fluoride treatment.
- Proven therapeutic provides caries reduction.
- Enhanced remineralization.
- Protection from decalcification for orthodontic patients.
- Available in great-tasting, compliance-friendly flavors.
- Four-year shelf life.



Product Information

Item Number

OMNI Gel 0.4% Stannous Fluoride Brush-On Gel

Mint Flavor – 4.3 oz Bottle (24 Bottles/Case)	12106M
Grape Flavor – 4.3 oz Bottle (24 Bottles/Case)	12106G
Raspberry Flavor – 4.3 oz Bottle (24 Bottles/Case)	12106R
Cinnamon Flavor – 4.3 oz Bottle (24 Bottles/Case)	12106C
Natural Flavor – 4.3 oz Bottle (24 Bottles/Case)	12106N

Just For Kids™ 0.4% Stannous Fluoride Brush-On Gel

Designed for young, caries-prone patients. Three great flavors help assure compliance, and treatment brochures assist in guiding parents through the important steps of early childhood oral care.

Indications

- Aids in the prevention of dental decay.

Product Benefits

- Designed for young, caries-prone patients.
- Brush-on therapy for caries reduction.
- Available in three great-tasting, kid-friendly flavors.
- Four-year shelf life.



Product Information

Item Number

Just For Kids 0.4% Stannous Fluoride Brush-On Gel

Bubble Gum Flavor – 4.3 oz Bottle (24 Bottles/Case)	12107B
Grapey Grape Flavor – 4.3 oz Bottle (24 Bottles/Case)	12107G
Fruit Punch Flavor – 4.3 oz Bottle (24 Bottles/Case)	12107F

OrthoWash™ Daily Rinse

A 0.044% Sodium Fluoride rinse in an Acidulated Phosphate Fluoride solution that is beneficial for patients undergoing orthodontic treatment to prevent decalcification and caries.

Indications

- Aids in the prevention of dental decay.

Product Benefits

- A daily rinse designed for orthodontic patients to prevent decalcification and caries.
- Available in grape and strawberry flavors.



Product Information

Item Number

OrthoWash Daily Rinse

Grape Flavor – 16 oz Bottle (12 Bottles/Case)	12108G
Strawberry Flavor – 16 oz Bottle (12 Bottles/Case)	12108S

CaviRinse™ 0.2% Sodium Fluoride Rinse

An ideal rinse when a weekly dosage of Neutral Sodium Fluoride is indicated. A once-per-week, 10 ml application has been compared to daily rinsing with 0.05% Sodium Fluoride.

Indications

- Dental caries prevention.

Product Benefits

- Ideal rinse when a weekly dosage of Neutral Sodium Fluoride is indicated.
- Once-per-week, 10 ml application has been compared to daily rinsing with 0.05% Sodium Fluoride.



Product Information

Item Number

CaviRinse 0.2% Sodium Fluoride Rinse

Mint Flavor – 8 oz Bottle (12 Bottles/Case)	12109M
---	--------

Clinpro™ Prophy Paste

A prophy paste that is formulated to break down as it cleans—from a coarse to a fine grit—resulting in a great cleaning and gentle polishing with less abrasion to the dentin and enamel.

Indications

- To be used for cleaning and polishing as part of a professionally administered prophylaxis treatment.

Product Benefits

- Unique perlite particles within the paste start out coarse and gradually break down into smaller particles as you clean, resulting in less abrasion to the dentin and enamel.
- Removes stains as well as a leading paste, while being significantly less abrasive to both dentin and enamel.
- Contains fluoride.
- Neutral pH value.
- Available in unit-dose cups for easy use and improved infection control.
- Refreshing mint and bubble gum flavors.



Product Information	Item Number
Clinpro Prophy Paste	
Mint Flavor	12611
200 Cups; 1 Prophy Ring; Instructions	
Bubble Gum Flavor	12612
200 Cups; 1 Prophy Ring; Instructions	

Clinpro™ Prophy Angles

Designed with input by dental hygienists, these single-use prophy angles feature non-latex* cups with quality construction and performance.

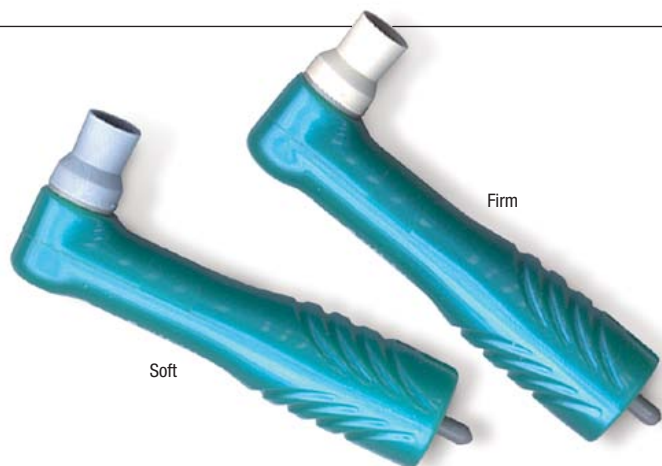
Indications

- For use in cleaning and polishing procedures as part of a professionally administered prophylaxis treatment.

Product Benefits

- Non-latex* cups.
- Prophy angles offer quality construction and performance for better reliability.
- Single-use disposables for improved infection control.
- Soft or firm cups are available to meet your procedural needs.

*This product is made of a synthetic material and does not intentionally contain natural rubber latex.



Product Information	Item Number
Clinpro Prophy Angles	
Firm – Firm Cup (144 Angles)	12600
Soft – Soft Cup (144 Angles)	12601

Singles™ Prophy Paste with Fluoride

For those who prefer a traditional prophy paste, Singles™ Prophy Paste with Fluoride is available in pleasant-tasting mint, cherry and bubble gum flavors. A wide variety of grits are available for all your prophylaxis needs.

Indications

- To be used for cleaning and polishing as part of a professionally administered prophylaxis treatment.

Product Benefits

- Traditional prophy paste with fluoride.
- Available in pleasant-tasting mint, cherry and bubble gum flavors.
- A wide variety of grits are available for all your prophylaxis needs.



Product Information

Item Number

Singles Prophy Paste with Fluoride

Bubble Gum Flavor – Fine Grit (200/Box)	12606B
Bubble Gum Flavor – Medium Grit (200/Box)	12607B
Mint Flavor – Medium Grit (200/Box)	12607M
Cherry Flavor – Medium Grit (200/Box)	12607C
Bubble Gum Flavor – Coarse Grit (200/Box)	12608B
Mint Flavor – Coarse Grit (200/Box)	12608M
Cherry Flavor – Coarse Grit (200/Box)	12608C
Mint Flavor – Extra Coarse Grit (200/Box)	12609M

C & P Powder™ Air Polishing Powder

A spearmint-flavored powder for use in air prophylaxis cleaning and polishing units. Packaged in a convenient, direct-pour squeeze bottle to reduce waste and make dispensing easy and clean, it offers significant cost savings over the other brands.

Indications

- For use in air prophylaxis cleaning and polishing units.
- To be used for cleaning and polishing as part of a professionally administered prophylaxis treatment.

Product Benefits

- Spearmint-flavored powder designed for use in air prophylaxis cleaning and polishing units.
- Packaged in a convenient, direct-pour squeeze bottle to reduce waste and make dispensing easy and clean.
- Offers significant cost savings over other brands.



Product Information

Item Number

C & P Powder Air Polishing Powder

Spearmint Flavor – 10 oz Squeeze Bottle	12616
---	-------

Floss N Toss™ Disposable Flossers

The Floss N Toss™ Disposable Flosser provides a convenient and comfortable way to floss teeth. It's the perfect option for patients with tight contacts between teeth, and ideal for those on the go.

Indications

- Flossing teeth.

Product Benefits

- More convenient than dental floss.
- Slides smoothly between teeth.
- Tough yet soft, floss is supported firmly in a flexible flosser with a convenient pick at the opposing end.
- Easy to handle and holds its shape even if bent, to access those difficult-to-reach back teeth.
- Perfect option for patients with tight contacts between teeth and ideal for those on the go.



Product Information

Item Number

Floss N Toss Disposable Flossers 12130
30 – Flossers per package (48 Packages/Case)

TheraMints™ 100% Xylitol Sweetened Mints

Great-tasting mints sweetened with 100% xylitol natural sugar substitute that stimulate saliva flow to fight the harmful effects of dry mouth, do not promote tooth decay, and are available in mint and fruit flavors.

Indications

- May reduce risk of tooth decay.
- To stimulate saliva flow to fight the harmful effects of dry mouth.

Product Benefits

- Great-tasting mints sweetened with 100% xylitol natural sugar substitute.
- Do not promote tooth decay.
- Stimulate saliva flow to fight the harmful effects of dry mouth.
- Available in mint and fruit flavors.



Product Information

Item Number

TheraMints 100% Xylitol Sweetened Mints
Mint Flavor – 520-Mint Bottle with Travel Tin 12119M
(24 Bottles/Case)
Fruit Flavor – 520-Mint Bottle with Travel Tin 12119F
(24 Bottles/Case)

White & Brite™ Tooth Whitening System

This whitening system offers a wide array of professional options for tooth whitening needs.

Indications

- Whitening of discolored teeth.

Product Benefits

- Provides long-lasting white teeth.
- Available in different strength formulations.
- Syringes contain dosing guides to help avoid dispensing excess gel.



Product Information	Item Number
White & Brite Tooth Whitening System	
6 Syringe Deluxe Kits	
3.5g Syringes with Tips; Deluxe Tray Case; Shade Guide; Patient Instructions; Tray Material	
10% Carbamide Peroxide	12170
16% Carbamide Peroxide	12171
22% Carbamide Peroxide	12172
White & Brite Tooth Whitening System	
4 Syringe Express Kits	
3.5g Syringes with Tips; Deluxe Tray Case; Patient Instructions; Tray Material	
16% Carbamide Peroxide	12174
22% Carbamide Peroxide	12175
White & Brite Tooth Whitening System	
2 Syringe Touch-Up Kits	
3.5g Syringes with Tips	
10% Carbamide Peroxide	12176
16% Carbamide Peroxide	12177
22% Carbamide Peroxide	12178

Avagard™ D Instant Hand Antiseptic with Moisturizers

A 16 fl oz (500 mL) instant hand antiseptic with moisturizers in a pump bottle.

Indications

- For use as an instant healthcare personnel hand antiseptic.

Product Benefits

- Provides rapid bactericidal action against a broad spectrum of microorganisms.
- Helps maintain the skin's integrity and prevents skin breakdown.
- Contains 61% w/w ethyl alcohol in a moisturizing base.
- Meets the CDC Guideline for "Hand Hygiene in Healthcare Settings."
- Unique, rich emollient base feels smooth on hands, but doesn't leave hands sticky or impact glove performance.
- Quick and easy to use, and fits easily within the dental professional work environment.



Product Information

Item Number

Avagard D Instant Hand Antiseptic with Moisturizers Refill 500ml Pump Bottle	2317
---	------

Attest™ Biological Monitoring System

The Attest™ Biological Monitoring System is a convenient, reliable system for monitoring steam sterilization. Test results are known in 24-48 hours. Results can be documented in the Attest record book.

Product Benefits

- Convenient system provides the products you need to monitor the steam sterilization cycle.
- Self-contained biological indicators significantly reduce the possibility of contamination, minimizing false positives and ensuring more accurate results.
- Incubator automatically crushes vial to release medium, making it safer and easier to use than other systems.
- 14-vial capacity to meet the needs of both small and large offices.
- See-through cover allows for easy observation and reading of indicator color change.
- Dry-block design is pre-set to proper incubation temperature to ensure consistent, accurate results.
- System is color-coded for quick reference and easy use.
- Readout is available in 24-48 hours, providing faster results than typical mail-in services.



Product Information

Item Number

Attest Biological Monitoring System 116K
 1 – #116 Attest Steam Incubator
 1 – Box #1262P Attest Biological Indicators
 1 – Attest Record Book

Attest Steam Incubator

For Steam Sterilization Biological Indicators. 116
 Operates at 56°C 120 V.A.C.

Attest™ Biological Indicators

Biological indicators are the only method that indicates the sterilization process was effective and the spores were killed. A nonpathogenic but highly resistant spore, *Geobacillus stearothermophilus*, is used to provide a maximum challenge to the steam sterilization process.

Product Benefits

- Self-contained biological indicators.
- Design provides a maximum challenge to various steam sterilization cycles.
- A spore burden beyond the average bioburden (germ count) provides an extra margin of safety.
- Optimized media promote rapid growth of spores.
- Definitive color change of the media indicates sterilization process ineffectiveness.
- Quick verification time of 24 hours (1261) or 48 hours (1262) versus one-week, mail-in services.



Product Information

Item Number

Attest Biological Indicator Refills

Indicator for use in "Flash" Gravity Steam Sterilization
 25 – Indicators/Box 1261P
 Indicator for use in Steam Sterilization
 25 – Indicators/Box 1262P

Lead Free Autoclave Steam Indicator Tape

The industry standard for exposure monitoring is now lead free—eliminating the hassles and expenses of managing and disposing of potentially hazardous waste. This reliable chemical indicator tape shows at a glance whether packs have been exposed to a steam sterilization process.

Indications

- As an external chemical indicator on the outside of each package for the steam sterilization process.

Product Benefits

- Stripes change color after exposure to steam sterilization to provide immediate identification of processed items.
- Lead free—does not require hazardous waste disposal.
- Versatile tape designed for use on all wraps, including disposable, non-woven and linen wraps.
- Provides a secure seal and is easy to remove from reusable wraps.
- Tape stretches to minimize tape pop-off, which reduces need for re-sterilization due to packs opening during processing.
- Accepts handwriting and labeling for easy use and better recordkeeping.
- Low cost per use offers economical way to monitor sterilization exposure.
- Available in three widths.



Product Information

Item Number

Lead Free Autoclave Steam Indicator Tape Refills

12mm x 55m, 1 Roll/Box, Individually Boxed	1322A
18mm x 55m, 1 Roll/Box, Individually Boxed	1322B
24mm x 55m, 1 Roll/Box, Individually Boxed	1322C
12mm x 55m, 42 Rolls/Case, Bulk Pack	1322D
18mm x 55m, 28 Rolls/Case, Bulk Pack	1322E
24mm x 55m, 20 Rolls/Case, Bulk Pack	1322F

As a worldwide leader in dental products, 3M ESPE offers dental professionals a complete line of premium quality, comfortable face masks.

Triple Layer Molded Face Masks

Top-of-the-line face mask with a three-layer design, including an outer layer, a microfiber middle layer, and a soft, absorbent inner layer.

Product Benefits

- Fluid resistant to help reduce potential exposure of the wearer to blood and body fluids.¹
- Greater than 99% Bacterial Filtration Efficiency (BFE) when challenged with a mean particle size of approximately 2.7 microns.²
- The mask's middle layer is designed to help filter large wearer-generated particles.
- The soft inner layer absorbs moisture.
- Available in regular and petite sizes for a better fit on a wider variety of faces.



Molded Face Masks

Our molded face masks are lightweight and comfortable with a single elastic band that makes them quick and easy to put on and take off.

Product Benefits

- Helps reduce potential exposure of the wearer to blood and body fluids.³
- Greater than 99% Bacterial Filtration Efficiency (BFE) when challenged with particles approximately 4.6-4.7 microns in size.⁴
- Soft and lightweight for comfortable wear.
- Collapse-resistant design.
- Non-fiberglass.
- Available in two colors: blue and rose.



Ear Loop Face Masks

The Ear Loop Face Mask features slip-on convenience and provides fluid resistance.¹

Product Benefits

- Fluid resistant to help reduce potential exposure of the wearer to blood and body fluids.¹
- Greater than 99% Bacterial Filtration Efficiency (BFE) when challenged with a mean particle size of approximately 2.7 microns.²
- Convenient ear loop design allows you to slip on and remove mask quickly and easily.
- Ear loop mask is soft and lightweight for comfortable wear.
- Folds in mask expand for full coverage from top of nose to underneath chin.
- Malleable nosepiece allows custom fit.

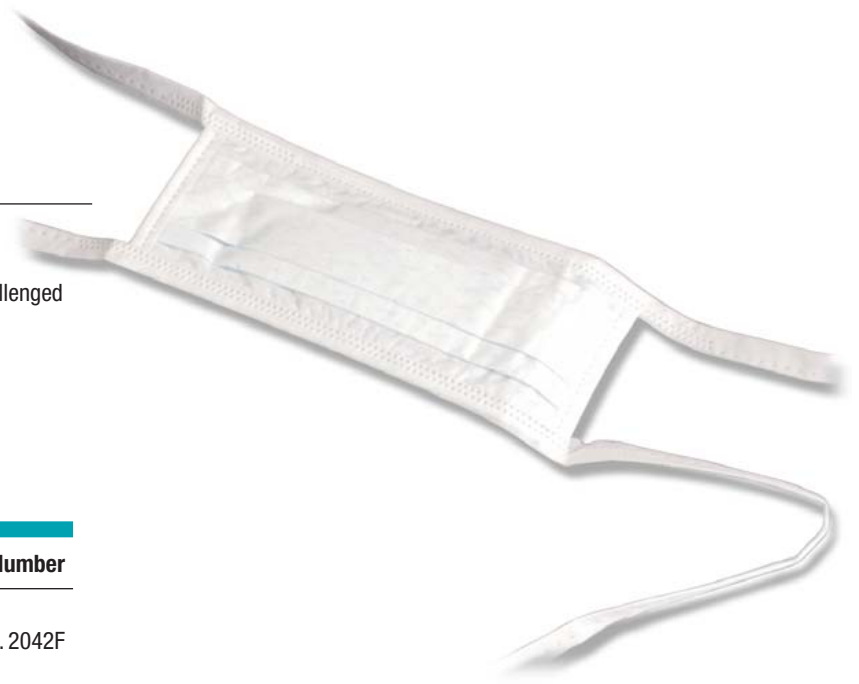


Tie-On Face Masks

For those who prefer a flat mask, the Tie-On Face Mask provides comfort and breathability.

Product Benefits

- Helps reduce potential exposure of the wearer to blood and body fluids.³
- Greater than 98% Bacterial Filtration Efficiency (BFE) when challenged with a mean particle size of approximately 2.7 microns.²
- Adjustable to fit a variety of facial shapes and sizes.
- Tie-on mask is soft and lightweight for comfortable wear.
- Hypoallergenic to reduce chance of allergic reaction.



Product Information

Item Number

Face Mask Refills

Triple Layer Molded Face Masks	2042F
50 – Masks per Box	
Triple Layer Molded Face Masks, Petite	2042FP
50 – Masks per Box	
Molded Face Masks, Blue	1942FB
50 – Masks per Box	
Molded Face Masks, Rose	1942FR
50 – Masks per Box	
Ear Loop Face Masks	2000F
50 – Masks per Box	
Tie-On Face Masks	1818
50 – Masks per Box	

1. Determined by ASTM F1862 test method.
 2. Determined by the BFE test method specified in EN 14683:2005.
 3. Determined by ASTM hydrostatic pressure test method.
 4. Determined by the modified Greene & Vesley test method.

Impregum™ Soft Polyether

Get accurate detail even in moist conditions with this polyether impression material.

Indications

- Crown and bridge impressions.
- Inlay and onlay impressions.
- Functional impressions.
- Implant abutments.
- Quick setting materials especially suited for single-unit and two-unit impressions.
- Denture and partial denture impressions.

Product Benefits

- Excellent flow properties—captures fine details for precise impressions.
- Better initial hydrophilicity than any VPS—provides void-free impressions in moist conditions.
- “Snap-set behavior” of Soft polyether is ultra-forgiving and results in precise-fitting restorations without distortion.
- Helps get an accurate impression on the first take—reducing the need for costly adjustments, remakes and retakes.
- Less rigid polyether is easier to remove, great for dual-arch trays.
- Quick Step materials cut working and setting times by at least 33%.
- Tray materials available in both Pentamix™ Mixing Unit and cartridge dispenser.

POLYETHER Impression Materials	Working Time (Includes Mix)	Setting Time (From Start of Mix)
Impregum Penta Soft Heavy Body	2:30	6:00
Impregum Penta Soft Quick Step Heavy Body	1:00	4:00
Impregum Penta Soft Medium Body	2:45	6:00
Impregum Penta Soft Quick Step Medium Body	1:00	4:00
Impregum Soft Tray	1:45	6:00
Impregum Soft Quick Step Tray	1:00	4:00
Impregum Penta Soft Light Body Wash	3:15	6:30
Impregum Soft Light Body Wash	2:00	5:30
Impregum Soft Quick Step Light Body Wash	1:00	4:00



Product Information

Item Number

Impregum Penta Soft Heavy Body/Light Body

Intro Kit (Pentamix 3)	P31739
1 – 300ml HB Base	
1 – 60ml HB Catalyst	
1 – Penta HB Cartridge	
10 – Penta Mixing Tips, Red	
2 – 50ml LB Cartridges	
5 – Polyether Mixing Tips, White	
5 – Polyether Intraoral Tips, White	
5 – Intra-oral Syringes, Purple	
1 – 17ml Polyether Tray Adhesive	

Impregum Penta Soft Quick Step Heavy Body/Light Body

Intro Kit (Pentamix 3)	P31779
1 – 300ml HB Base	
1 – 60ml HB Catalyst	
1 – Penta HB Cartridge	
10 – Penta Mixing Tips, Red	
5 – Polyether Mixing Tips, White	
5 – Polyether Intraoral Tips, White	
5 – Intra-oral Syringes, Purple	
1 – 17ml Polyether Tray Adhesive	
2 – 50ml LB Cartridges	

Impregum Penta Soft Medium Body

Intro Kit (Pentamix 3)	P31735
1 – 300ml Base	
1 – 60ml Catalyst	
1 – Penta MB Cartridge	
1 – Penta Elastomer Syringe	
10 – Penta Mixing Tips, Red	
1 – 17ml Polyether Tray Adhesive	

Impregum Penta Soft Quick Step Medium Body

Intro Kit (Pentamix 3)	P31771
1 – 300ml Base	
1 – 60ml Catalyst	
1 – Penta MB Cartridge	
1 – Penta Elastomer Syringe	
10 – Penta Mixing Tips, Red	
1 – 17ml Polyether Tray Adhesive	

Product Information	Item Number
Impregum Penta Soft Heavy Body/Light Body Intro Kit (Pentamix 2)	31739
1 – 300ml HB Base	
1 – 60ml HB Catalyst	
1 – Penta HB Cartridge	
10 – Penta Mixing Tips, Red	
2 – 50ml LB Cartridges	
10 – Polyether Mixing Tips, White	
10 – Polyether Intraoral Tips, White	
1 – Cartridge Dispenser 1:1/2:1	
1 – 17ml Polyether Tray Adhesive	
Impregum Penta Soft Quick Step Heavy Body/Light Body Intro Kit (Pentamix 2)	31779
1 – 300ml HB Base	
1 – 60ml HB Catalyst	
1 – Penta HB Cartridge	
10 – Penta Mixing Tips, Red	
2 – 50ml LB Cartridges	
10 – Polyether Mixing Tips, White	
10 – Polyether Intraoral Tips, White	
1 – 17ml Polyether Tray Adhesive	
Impregum Penta Soft Medium Body Intro Kit (Pentamix 2)	31735
1 – 300ml Base	
1 – 60ml Catalyst	
1 – Penta MB Cartridge	
1 – Penta Elastomer Syringe	
10 – Penta Mixing Tips, Red	
1 – 17ml Polyether Tray Adhesive	
Impregum Penta Soft Quick Step Medium Body Intro Kit (Pentamix 2)	31771
1 – 300ml Base	
1 – 60ml Catalyst	
1 – Penta MB Cartridge	
1 – Penta Elastomer Syringe	
10 – Penta Mixing Tips, Red	
1 – 17ml Polyether Tray Adhesive	
Impregum Soft Tray Material Intro Kit	31786
3 – 50ml Tray Cartridges	
1 – 50ml LB Cartridge	
10 – Polyether Tray Mixing Tips, Purple	
5 – Polyether Mixing Tips, White	
5 – Polyether Intraoral Tips, White	
5 – Intra-oral Syringes, Purple	
1 – 17ml Polyether Tray Adhesive	
Impregum Soft Quick Step Tray Material Intro Kit	31789
3 – 50ml Tray Cartridges	
1 – 50ml LB Cartridge	
10 – Polyether Tray Mixing Tips, Purple	
5 – Polyether Mixing Tips, White	
5 – Polyether Intraoral Tips, White	
5 – Intra-oral Syringes, Purple	
1 – 17ml Polyether Tray Adhesive	
Impregum Soft Polyether Refills	
Impregum Penta Soft HB	31741
2 – 300ml Base	
2 – 60ml Catalyst	
Impregum Penta Soft Quick Step HB	31769
2 – 300ml Base	
2 – 60ml Catalyst	

Product Information	Item Number
Impregum Soft Polyether Refills (continued)	
Impregum Penta MB	31731
2 – 300ml Base	
2 – 60ml Catalyst	
Impregum Penta Soft Quick Step MB	31765
2 – 300ml Base	
2 – 60ml Catalyst	
Impregum Penta Soft LB	31746
1 – 300ml Base	
1 – 60ml Catalyst	
Impregum Soft Tray Material	31785
4 – 50ml Cartridges	
10 – Polyether Tray Mixing Tips, Purple	
Impregum Soft Tray Material Jumbo Pack	31785J
30 – 50ml Cartridges	
Impregum Soft Quick Step Tray Material	31788
4 – 50ml Cartridges	
10 – Polyether Tray Mixing Tips, Purple	
Impregum Soft Quick Step Tray Material Jumbo Pack	31788J
30 – 50ml Cartridges	
Impregum Soft LB	31752
4 – 50ml Cartridges	
20 – Polyether Mixing Tips, White	
Impregum Soft Quick Step LB	31767
4 – 50ml Cartridges	
20 – Polyether Mixing Tips, White	
Impregum Soft Polyether Accessories	
1 – Impregum Penta Cartridge Soft Heavy Body (Pentamix 3)	P3794
1 – Impregum Penta Cartridge Soft Quick Step Heavy Body (Pentamix 3)	P31774
1 – Impregum Penta Cartridge Soft Medium Body (Pentamix 3)	P3788
1 – Impregum Penta Cartridge Soft Quick Step Medium Body (Pentamix 3)	P31776
1 – Impregum Penta Cartridge Soft Light Body (Pentamix 3)	P3796
1 – Impregum Penta Cartridge Soft Heavy Body (Pentamix 2)	77794
1 – Impregum Penta Cartridge Soft Quick Step Heavy Body (Pentamix 2)	31774
1 – Impregum Penta Cartridge Soft Medium Body (Pentamix 2)	77788
1 – Impregum Penta Cartridge Soft Quick Step Medium Body (Pentamix 2)	31776
1 – Impregum Penta Cartridge Soft Light Body (Pentamix 2)	77796
1 – Cartridge Dispenser 1:1/2:1	77580
50 – Penta Mixing Tips, Red	71512
50 – Polyether Mixing Tips, White	71451
50 – Polyether Tray Mixing Tips, Purple	71454
50 – Polyether Intraoral Tips, White	71461
1 – 17ml Polyether Tray Adhesive	30600

Impregum™ Penta™ Polyether

The “original” polyether precision impression material that is ideal for use in the monophasic technique.

Indications

- Crown and bridge impressions.
- Inlay and onlay impressions.
- Functional impressions.
- Implant impressions.
- Fixation impressions.
- Denture and partial denture impressions.

Product Benefits

- Hydrophilic before, during and after the set for unsurpassed accuracy, even when moisture is present.
- Thixotropic: it flows smoothly under pressure.
- Snap-setting characteristic provides greater assurance of achieving precise-fitting final restorations without distortion.
- Automatic mixing and dispensing with the Pentamix™ System for completely homogeneous mix at the push of a button.
- **Working time (including mixing):**
2:45 min.
- **Setting time (from start of mix):**
6:00 min.



Product Information

Item Number

Impregum Penta Medium Body

Intro Kit (Pentamix 3)	P31685
1 – 300ml Base	
1 – 60ml Catalyst	
1 – Penta MB Cartridge	
1 – Penta Elastomer Syringe	
10 – Penta Mixing Tips, Red	
1 – 17ml Polyether Tray Adhesive	

Impregum Penta Medium Body

Intro Kit (Pentamix 2)	31685
1 – 300ml Base	
1 – 60ml Catalyst	
1 – Penta MB Cartridge	
1 – Penta Elastomer Syringe	
10 – Penta Mixing Tips, Red	
1 – 17ml Polyether Tray Adhesive	

Impregum Penta Medium Body Refill

2 – 300ml Base	31642
2 – 60ml Catalyst	

Impregum Penta Polyether Accessories

1 – Impregum Penta Medium Body Cartridge (Pentamix 3)	P3792
1 – Impregum Penta Medium Body Cartridge (Pentamix 2)	77792
50 – Penta Mixing Tips, Red	71512
1 – 17ml Polyether Tray Adhesive	30600

Impregum™ F (Handmix) Polyether

For those who prefer a hand-mix formulation, this medium body polyether material offers high-precision impressions.

Indications

- Crown and bridge impressions.
- Inlay and onlay impressions.
- Functional impressions.
- Implant impressions.
- Fixation impressions.
- Denture and partial denture impressions.

Product Benefits

- Hydrophilic before, during and after the set for unsurpassed accuracy, even in the presence of moisture.
- Thixotropic: it flows smoothly under pressure in critical areas and remains fixed without pressure.
- Snap-set properties reduce the potential for distortion during the setting process and removal from the mouth to assure a precise-fitting final restoration.
- Polyether material characteristics guarantee impressions of the highest precision.
- Monophase impression technique; just one viscosity for tray and syringe.
- **Working time (including mixing):**
2:45 min.
- **Setting time (from start of mix):**
6:00 min.



Product Information

Item Number

Impregum F Polyether Intro Kit	31712
2 – 120ml Tubes Base	
2 – 15ml Tubes Catalyst	
1 – Mixing Pad	
Impregum F Polyether Refills	
1 – 120ml Tube Base	31504
1 – 15ml Tube Catalyst	31474
Impregum F Polyether Accessories	
1 – 17ml Polyether Tray Adhesive	30600

Permadyne™ Polyether

A polyether impression material with easy, automatic mixing and dispensing using the Pentamix™ Automatic Mixing Unit.

Indications

- Crown and bridge impressions.
- Inlay and onlay impressions.
- Functional impressions.
- Denture and partial denture impressions.

Product Benefits

- Hydrophilic before, during and after the set for unsurpassed accuracy, even in the presence of moisture.
- Thixotropic: it flows smoothly under pressure in critical areas and remains fixed without pressure.
- Snap-setting characteristic provides for a rapid transition to the set phase while allowing sufficient working time. This ensures a precise-fitting final restoration without distortion.
- Polyether material characteristics guarantee impressions of the highest precision.
- **Working time (including mixing):**
 - Permadyne Penta 2:30 min.
 - Permadyne Cartridge 2:00 min.
- **Setting time (from start of mix):**
 - Permadyne Penta 6:00 min.
 - Permadyne Cartridge 5:30 min.



Product Information

Item Number

Permadyne Polyether Refills

Permadyne Penta Heavy Body	30103
2 – 300ml Base	
2 – 60ml Catalyst	
Permadyne Penta Light Body	30312
1 – 300ml Base	
1 – 60ml Catalyst	
Permadyne 2:1 Light Body.	30413
4 – 50ml Cartridges	
20 – Polyether Mixing Tips, White	

Permadyne Polyether Accessories

1 – Permadyne Penta H Cartridge (Pentamix 3)	P3851
1 – Permadyne Penta L Cartridge (Pentamix 3)	P3861
1 – Permadyne Penta H Cartridge (Pentamix 2)	77851
1 – Permadyne Penta L Cartridge (Pentamix 2)	77861
1 – Cartridge Dispenser 1:1/2:1	77580
50 – Penta Mixing Tips, Red	71512
50 – Polyether Mixing Tips, White	71451
50 – Polyether Intraoral Tips, White	71461
1 – 17ml Polyether Tray Adhesive	30600

Permadyne™ (Handmix) Polyether

A hand-mix formulation that offers high-precision impressions, and is ideal for the one-step/two-viscosity technique.

Indications

- Crown and bridge impressions.
- Inlay and onlay impressions.
- Functional impressions.
- Denture and partial denture impressions.

Product Benefits

- Polyether material characteristics guarantee impressions of the highest precision.
- Hydrophilic before, during and after the set for unsurpassed accuracy, even in the presence of moisture.
- Thixotropic: it flows smoothly under pressure in critical areas and remains fixed without pressure.
- Snap-setting characteristic provides for a rapid transition to the set phase while allowing sufficient working time to ensure a precise-fitting final restoration without distortion.
- **Working time (including mixing):**
 - Permadyne Tray 2:30 min.
 - Permadyne Syringe 3:00 min.
- **Setting time (from start of mix):**
 - Permadyne Tray 5:30 min.
 - Permadyne Syringe 6:00 min.



Product Information

Item Number

Permadyne Heavy Body Handmix (Tray) Intro Kit	30711
2 – 120ml Tubes Base	
2 – 15ml Catalyst	
1 – Mixing Pad	
Permadyne Light Body Handmix (Syringe) Intro Kit	30751
2 – 120ml Tubes Base	
2 – 15ml Catalyst	
1 – Mixing Pad	

Imprint™ 3 VPS

Imprint™ 3 VPS Impression Material is designed to resist distortion better than any other VPS to help reduce costly retakes, remakes and adjustments.

Indications

- Crown and bridge impressions.
- Inlay and onlay impressions.
- Functional impressions.
- Implant abutments.
- Clear aligner impressions.
- Study model impressions.
- Quick setting materials especially suited for single-unit and two-unit impressions.
- Removable denture and partial denture impressions.

Product Benefits

- Best balance of clinical properties, compared to other leading brands, including Aquasil Ultra.
- More hydrophilic than all leading VPS impression materials, including Aquasil Ultra, to help you get void-free impressions.
- Memory: best-in-class elastic recovery resists distortion for a more accurate impression.
- Toughness: resists tearing better than most leading brands.
- Available in a full range of viscosities, deliveries and setting times.
- Backed by 3M ESPE, the worldwide leader in impression materials.

IMPRINT 3 VPS Impression Materials	Working Time (Includes Mix)	Setting Time (From Start of Mix)
Imprint 3 Penta Putty	1:30	3:00
Imprint 3 Penta Heavy Body	2:00	3:30
Imprint 3 Penta Quick Step Heavy Body	1:15	2:30
Imprint 3 Heavy Body	2:00	4:00
Imprint 3 Quick Step Heavy Body	1:15	2:30
Imprint 3 Monophase (Medium Body)	2:00	4:00
Imprint 3 Ultra-Regular Body	2:00	3:30*
Imprint 3 Quick Step Ultra-Regular Body	1:30	2:30
Imprint 3 Regular Body	2:00	3:30*
Imprint 3 Quick Step Regular Body	1:30	2:30
Imprint 3 Light Body	2:00	3:30*
Imprint 3 Quick Step Light Body	1:30	2:30

*Intraoral setting time is 3:00 minutes when used in combination with Imprint 3 Penta Putty.



Product Information Item Number

Imprint 3 Heavy Body/Light Body Intro Kit 10770

- 2 – 50ml HB Cartridges
- 1 – 50ml RB Cartridge
- 1 – 50ml LB Cartridge
- 10 – VPS Mixing Tips, Green
- 10 – VPS Mixing Tips, Yellow
- 10 – VPS Intraoral Tips, Yellow
- 1 – 17ml VPS Tray Adhesive

Imprint 3 Quick Step Heavy Body/Light Body Intro Kit 10970

- 2 – 50ml HB Cartridges
- 1 – 50ml RB Cartridge
- 1 – 50ml LB Cartridge
- 10 – VPS Mixing Tips, Green
- 10 – VPS Mixing Tips, Yellow
- 10 – VPS Intraoral Tips, Yellow
- 1 – 17ml VPS Tray Adhesive

Imprint 3 Penta Heavy Body/Light Body

Intro Kit (Pentamix 3) P310770

- 1 – 300ml HB Base
- 1 – 60ml HB Catalyst
- 1 – Penta HB Cartridge
- 10 – Penta Mixing Tips, Red
- 1 – 50ml RB Cartridge
- 1 – 50ml URB Cartridge
- 5 – VPS Mixing Tips, Yellow
- 5 – VPS Intraoral Tips, Yellow
- 5 – Intra-oral Syringes, Green
- 1 – 17ml VPS Tray Adhesive

Imprint 3 Penta Quick Step Heavy Body/Light Body

Intro Kit (Pentamix 3) P310790

- 1 – 300ml HB Base
- 1 – 60ml HB Catalyst
- 1 – Penta HB Cartridge
- 10 – Penta Mixing Tips, Red
- 1 – 50ml RB Cartridge
- 1 – 50ml URB Cartridge
- 5 – VPS Mixing Tips, Yellow
- 5 – VPS Intraoral Tips, Yellow
- 5 – Intra-oral Syringes, Green
- 1 – 17ml VPS Tray Adhesive

Product Information	Item Number
Imprint 3 Penta Putty/Ultra-Regular Body	
Intro Kit (Pentamix 3)	P36959
1 – 300ml Putty Base	
1 – 60ml Putty Catalyst	
1 – Penta Putty Cartridge	
10 – Penta Mixing Tips, Red	
1 – 50ml RB Cartridge	
1 – 50ml URB Cartridge	
5 – VPS Mixing Tips, Yellow	
5 – VPS Intraoral Tips, Yellow	
5 – Intra-oral Syringes, Green	
1 – 17ml VPS Tray Adhesive	
Imprint 3 Penta Heavy Body/Light Body	
Intro Kit (Pentamix 2)	10770PH
1 – 300ml HB Base	
1 – 60ml HB Catalyst	
1 – Penta HB Cartridge	
10 – Penta Mixing Tips, Red	
1 – 50ml RB Cartridge	
1 – 50ml LB Cartridge	
10 – VPS Mixing Tips, Yellow	
10 – VPS Intraoral Tips, Yellow	
1 – 17ml VPS Tray Adhesive	
Imprint 3 Penta Quick Step Heavy Body/Light Body	
Intro Kit (Pentamix 2)	10970PH
1 – 300ml HB Base	
1 – 60ml HB Catalyst	
1 – Penta HB Cartridge	
10 – Penta Mixing Tips, Red	
1 – 50ml RB Cartridge	
1 – 50ml LB Cartridge	
10 – VPS Mixing Tips, Yellow	
10 – VPS Intraoral Tips, Yellow	
1 – 17ml VPS Tray Adhesive	
Imprint 3 Penta Putty/Ultra-Regular Body	
Intro Kit (Pentamix 2)	36959
1 – 300ml Putty Base	
1 – 60ml Putty Catalyst	
1 – Penta Putty Cartridge	
10 – Penta Mixing Tips, Red	
1 – 50ml RB Cartridge	
1 – 50ml URB Cartridge	
10 – VPS Mixing Tips, Green	
10 – VPS Mixing Tips, Yellow	
10 – VPS Intraoral Tips, Yellow	
1 – 17ml VPS Tray Adhesive	
Imprint 3 VPS Refills	
Imprint 3 Penta Heavy Body	10771PH
2 – 300ml Base	
2 – 60ml Catalyst	
Imprint 3 Penta Quick Step Heavy Body	10971PH
2 – 300ml Base	
2 – 60ml Catalyst	
Imprint 3 Penta Putty	10771PP
2 – 300ml Putty Base	
2 – 60ml Putty Catalyst	

Product Information	Item Number
Imprint 3 VPS Refills (continued)	
Imprint 3 Heavy Body	10771
4 – 50ml HB Cartridges	
10 – VPS Mixing Tips, Green	
Imprint 3 Heavy Body Jumbo Pack	10771J
30 – 50ml HB Cartridges	
Imprint 3 Quick Step Heavy Body	10971
4 – 50ml HB Cartridges	
10 – VPS Mixing Tips, Green	
Imprint 3 Quick Step Heavy Body Jumbo Pack	10971J
30 – 50ml HB Cartridges	
Imprint 3 Monophase Medium Body	10781
4 – 50ml MB Cartridges	
10 – VPS Mixing Tips, Green	
Imprint 3 Ultra-Regular Body Wash	36956
4 – 50ml URB Cartridges	
10 – VPS Mixing Tips, Yellow	
Imprint 3 Quick Step Ultra-Regular Body Wash	36955
4 – 50ml URB Cartridges	
10 – VPS Mixing Tips, Yellow	
Imprint 3 Regular Body Wash	10779
4 – 50ml RB Cartridges	
10 – VPS Mixing Tips, Yellow	
Imprint 3 Quick Step Regular Body Wash	10979
4 – 50ml RB Cartridges	
10 – VPS Mixing Tips, Yellow	
Imprint 3 Light Body Wash	10778
4 – 50ml LB Cartridges	
10 – VPS Mixing Tips, Yellow	
Imprint 3 Quick Step Light Body Wash	10978
4 – 50ml LB Cartridges	
10 – VPS Mixing Tips, Yellow	
Imprint 3 VPS Accessories	
1 – Imprint 3 Penta Heavy Body Cartridge (Pentamix 3)	P3808
1 – Imprint 3 Penta Quick Step Heavy Body Cartridge (Pentamix 3)	P3807
1 – Imprint 3 Penta Putty Cartridge (Pentamix 3)	P3806
1 – Imprint 3 Penta Heavy Body Cartridge (Pentamix 2)	77808
1 – Imprint 3 Penta Quick Step Heavy Body Cartridge (Pentamix 2)	77807
1 – Imprint 3 Penta Putty Cartridge (Pentamix 2)	77806
1 – Cartridge Dispenser 1:1/2:1	77580
50 – Penta Mixing Tips, Red	71512
50 – VPS Mixing Tips, Green	71450
50 – VPS Mixing Tips, Yellow	71452
50 – VPS Intraoral Tips, Bite, Clear	71460
50 – VPS Intraoral Tips, Yellow	71462
1 – 17ml VPS Tray Adhesive	7307

Imprint™ II VPS

Deliver the high accuracy with confidence from this precision impression material.

Indications

- Crown and bridge impressions.
- Inlay and onlay impressions.
- Functional impressions.
- Implant impressions.
- Denture and partial denture impressions.

Product Benefits

- Heavy Body impression material available in Penta™ or Cartridge delivery.
- Void-free and homogeneous mix when used with the Pentamix mixing unit.
- Does not drip or slump.
- Easy to remove from mouth.

IMPRINT II VPS Impression Materials	Working Time (Includes Mix)	Setting Time (From Start of Mix)
Imprint II Penta Heavy Body	2:00	4:00
Imprint II Regular Body	1:00	4:00
Imprint II Quick Step Regular Body	0:40	2:30
Imprint II Light Body	1:00	4:00
Imprint II Quick Step Light Body	0:40	2:30



Product Information

Item Number

Imprint II VPS Refills

Imprint II Penta Heavy Body	9371P
2 – 300ml Base	
2 – 60ml Catalyst	
Imprint II Regular Body	9379
4 – 50ml Cartridges	
20 – VPS Mixing Tips, Yellow	
Imprint II Quick Step Regular Body	9579
4 – 50ml Cartridges	
20 – VPS Mixing Tips, Yellow	
Imprint II Light Body	9378
4 – 50ml Cartridges	
20 – VPS Mixing Tips, Yellow	
Imprint II Quick Step Light Body	9578
4 – 50ml Cartridges	
20 – VPS Mixing Tips, Yellow	

Imprint II VPS Accessories

1 – Imprint II Penta Heavy Body Cartridge (Pentamix 3)	P3804
1 – Imprint II Penta Heavy Body Cartridge (Pentamix 2)	77804
1 – Cartridge Dispenser 1:1/2:1	77580
50 – Penta Mixing Tips, Red	71512
50 – VPS Mixing Tips, Green	71450
50 – VPS Mixing Tips, Yellow	71452
50 – VPS Intraoral Tips, Yellow	71462
1 – 17ml VPS Tray Adhesive	7307

Dimension™ VPS

Dimension impression materials offer features you can count on to produce consistently accurate results.

Indications

- Crown and bridge impressions.
- Inlay and onlay impressions.
- Removable denture and partial denture impressions.

Product Benefits

- Accurate results for better fitting prosthesis while reducing the need for remakes and adjustments.
- Automatic mixing and dispensing in the Pentamix™ Mixing Unit provides for a reliable dosing impression material that is homogeneous and void free.
- Excellent detail reproduction.
- Does not drip or slump.
- Hydrophilic.
- Excellent recovery from deformation.
- Excellent tear resistance.
- Stable in disinfectant solutions.
- **Working time (including mixing):**
 - Dimension Penta™ H 2:00 min.
 - Dimension Cartridge L 2:00 min.
- **Setting time (from start of mix):**
 - Dimension Penta H 6:00 min.
 - Dimension Cartridge L 5:30 min.

Dimension Quick VPS

- **Working time (including mixing):**
 - Dimension Penta H Quick 1:30 min.
 - Dimension Cartridge Quick L 1:30 min.
- **Setting time (from start of mix):**
 - Dimension Penta H Quick 4:00 min.
 - Dimension Cartridge Quick L 4:00 min.



Product Information

Item Number

Dimension VPS Refills

Dimension Penta H	36715
2 – 300ml Base	
2 – 60ml Catalyst	
Dimension Penta H Quick	36913
2 – 300ml Base	
2 – 60ml Catalyst	
Dimension Penta L	36311
1 – 300ml Base	
1 – 60ml Catalyst	
Dimension Cartridge L	36515
4 – 50ml Cartridges, Red	
20 – Cartridge Mixing Tips, Yellow	
Dimension Cartridge L Quick	36954
4 – 50ml Cartridges, Red	
20 – Cartridge Mixing Tips, Yellow	

Dimension VPS Accessories

1 – Dimension Penta H Cartridge (Pentamix 3)	P3801
1 – Dimension Penta H Quick Cartridge (Pentamix 3)	P3661
1 – Dimension Penta L Cartridge (Pentamix 3)	P3651
1 – Dimension Penta H Cartridge (Pentamix 2)	77801
1 – Dimension Penta H Quick Cartridge (Pentamix 2)	77661
1 – Dimension Penta L Cartridge (Pentamix 2)	77651
1 – Cartridge Dispenser 1:1/2:1	77580
50 – Penta Mixing Tips, Red	71512
50 – VPS Mixing Tips, Yellow	71452
50 – VPS Intraoral Tips, Yellow	71462
1 – 17ml VPS Tray Adhesive	7307

Paradigm™ VPS

The new value in dentistry: its versatility and price make it great for all indications.

Indications

- Crown and bridge impressions.
- Bleaching trays.
- Study models.
- Denture impressions.
- Provisional impressions.
- Implant abutments.

Product Benefits

- Easy extrusion and easy to use.
- Hydrophilic.
- Great flow, yet does not drip or slump.
- Good tear strength and recovery from deformation.
- Great for all indications.

PARADIGM VPS	Working Time (Includes Mix)	Setting Time (From Start of Mix)
Paradigm Heavy Body	2:00	4:00
Paradigm Heavy Body Fast Set	1:15	2:30
Paradigm Monophase	2:00	4:00
Paradigm Regular Body	1:00	4:00
Paradigm Regular Body Fast Set	0:40	2:30
Paradigm Light Body	1:00	4:00
Paradigm Light Body Fast Set	0:40	2:30



Product Information

Item Number

Paradigm VPS Refills

Paradigm VPS Heavy Body 2 – 50ml Cartridges HB	5313
Paradigm VPS Heavy Body Fast Set 2 – 50ml Cartridges HB	5513
Paradigm VPS Monophase 2 – 50ml Cartridges MB	5312
Paradigm VPS Regular Body 2 – 50ml Cartridges RB	5315
Paradigm VPS Regular Body Fast Set 2 – 50ml Cartridges RB	5515
Paradigm VPS Light Body 2 – 50ml Cartridges LB	5311
Paradigm VPS Light Body Fast Set 2 – 50ml Cartridges LB	5511

Paradigm VPS Jumbo Refills

Paradigm VPS Heavy Body 30 – 50ml Cartridges HB	5313J
Paradigm VPS Heavy Body Fast Set 30 – 50ml Cartridges HB	5513J

Express™ Putty/Wash VPS

With over 20 years of proven reliability, Express impression material offers a hand-mix putty and convenient delivery with the easy-to-use cartridge dispenser.

Indications

- Crown and bridge impressions.
- Inlay and onlay impressions.
- Denture and partial denture impressions.

Product Benefits

- The first vinyl polysiloxane automix system used worldwide.
- Multiple pour capability.
- Precise detail reproduction.
- Good dimensional stability.
- Excellent elastic recovery.
- **Working time (including mixing):**
 - Express Putty 1:00 min.
 - Express Regular Body 1:00 min.
 - Express Light Body Regular Set 1:00 min.
 - Express Light Body Fast Set 30 sec.
- **Setting time (from start of mix):**
 - Express Putty 5:00 min.
 - Express Regular Body 5:00 min.
 - Express Light Body Regular Set 5:00 min.
 - Express Light Body Fast Set 3:30 min.



Product Information

Item Number

Express Putty/Wash Intro Kit	7300
1 – 305ml Jar of Base	
1 – 305ml Jar of Catalyst	
2 – 50ml Cartridges Light Body Regular Set	
1 – Cartridge Dispenser 1:1/2:1	
20 – VPS Mixing Tips, Yellow	
10 – VPS Intraoral Tips, Yellow	
1 – 17ml VPS Tray Adhesive	
2 – Putty Spoons	
Express VPS Refills	
Express Regular Body	7322
4 – 50ml Cartridges	
20 – VPS Mixing Tips, Yellow	
Express Regular Body Bulk	7322T
10 – 50ml Cartridges	
Mixing Tips Not Included	
Express Light Body Fast Set	7301
4 – 50ml Cartridges	
20 – VPS Mixing Tips, Yellow	
Express Light Body Fast Set Bulk	7301T
10 – 50ml Cartridges	
Mixing Tips Not Included	
Express Light Body Regular Set	7302
4 – 50ml Cartridges	
20 – VPS Mixing Tips, Yellow	
Express Light Body Regular Set Bulk	7302T
10 – 50ml Cartridges	
Mixing Tips Not Included	
Express Putty	7312
1 – 305ml Jar of Base	
1 – 305ml Jar of Catalyst	
Express VPS Accessories	
1 – Cartridge Dispenser 1:1/2:1	77580
50 – VPS Mixing Tips, Yellow	71452
50 – VPS Intraoral Tips, Yellow	71462
1 – 17ml VPS Tray Adhesive	7307
2 – Putty Spoons	7314

Position™ Penta™ Quick VPS Alginate Replacement

Simplify preliminary impression-making: this VPS will make alginate a thing of the past.

Indications

- Preliminary impressions.
- Provisional crown and bridge impressions.
- Study-model impressions.
- Opposing dentition impressions.
- Impressions for orthodontic models.
- Impressions for bleaching trays and mouthguards.
- Preliminary impressions for denture and partial denture impressions.

Product Benefits

- No harmful dust that is produced from using alginates.
- Longer dimensional stability.
- Higher accuracy.
- Multiple pours from one impression.
- Fast working and setting times.
- Can be disinfected for infection control.
- Homogeneous, void-free impression material using the Pentamix 3 Automatic Mixing Unit.
- Faster and easier for Dental Assistants.
- No need to clean bowls or spatulas.
- No muscle stress from hand mixing.
- **Working time (including mixing):**
1:10 min.
- **Setting time (from start of mix):**
2:40 min.



Product Information

Item Number

Position Penta Quick VPS Intro Kit (Pentamix 3)	P39036
1 – 300ml Base Paste	
1 – 60ml Catalyst	
1 – Penta Cartridge	
Position Penta Quick VPS Refill	
2 – 300ml Base	29063
2 – 60ml Catalyst	
Position Penta Quick VPS Accessories	
1 – Position Penta Quick Cartridge (Pentamix 3)	P3691
1 – Position Penta Quick Cartridge (Pentamix 2)	77691
50 – Penta Mixing Tips, Red	71512

Imprint™ Bite

With a fast working time and set time, Imprint Bite Registration Material keeps your procedures moving quickly while enhancing patient comfort.

Indications

- Bite registrations.

Product Benefits

- Shore-A final hardness of 90.
- Thixotropic properties.
- Simple, convenient, automatic mixing with the cartridge dispenser from 3M ESPE.
- **Working time (including mixing):** :20 sec.
- **Setting time (from start of mix):** 1:00 min.



Product Information

Item Number

Imprint Bite Refill

4 – 50ml Imprint Bite Cartridges	36850
20 – VPS Mixing Tips, Green	

Product Information

Item Number

Imprint Bite Accessories

1 – Cartridge Dispenser 1:1/2:1	77580
50 – VPS Mixing Tips, Green	71450
50 – VPS Intraoral Tips, Bite, Clear.	71460

Express™ Bite

This vinyl polysiloxane registration material mixes easily without streaking and provides a firm set.

Indications

- Bite registrations.

Product Benefits

- Hand-mixed putty system is designed to mix easily without streaking for better results. Refill includes 2 – 305ml jars of putty and 1 bag of spacers.
- Material results in a firm set.
- Offers 15-20 seconds mixing time, up to 30 seconds seating time, and 1.5 minutes oral set time for fast results and enhanced patient comfort.
- **Working time (including mixing):** :30 sec.
- **Setting time (from start of mix):** 1:30 min.



Product Information

Item Number

Express Bite Refill

2 – 305ml Express Bite Jars	6160J
---------------------------------------	-------

Ramitec™ Penta™ Polyether

A polyether impression material for precise and detailed bite registrations with easy, automatic mixing and dispensing using the Pentamix™ Automatic Mixing Unit.

Indications

- Bite registrations.

Product Benefits

- Hydrophilic polyether characteristics provide highly precise, detailed bite registrations.
- Direct application onto the occlusal for simple handling.
- Thixotropic properties offer occlusal application without slumping.
- Provides high final hardness combined with easy trimming.
- **Working time (including mixing):** 2:00 min.
- **Setting time (from start of mix):** 5:00 min.



Product Information

Item Number

Ramitec Penta Polyether Refill33112
 1 – 300ml Base
 1 – 60ml Catalyst

Ramitec Penta Polyether Accessories

1 – Ramitec Penta Cartridge (Pentamix 3)P3821
 1 – Ramitec Penta Cartridge (Pentamix 2)77821
 5 – Ramitec Syringes72041

Ramitec™ (Handmix) Polyether

A polyether impression material in a hand-mix formulation that is ideal for precise and detailed bite registrations.

Indications

- Bite registrations.

Product Benefits

- Hydrophilic polyether characteristics provide highly precise, detailed bite registrations.
- Direct application onto the occlusal surface for simple handling.
- Thixotropic properties offer occlusal application without slumping.
- Provides high final hardness combined with easy trimming.
- **Working time (including mixing):** 2:00 min.
- **Setting time (from start of mix):** 5:00 min.



Product Information

Item Number

Ramitec (Handmix) Polyether Refill33710
 2 – 120ml Tubes Base
 2 – 15ml Tubes Catalyst
 1 – Mixing Pad

Ramitec (Handmix) Polyether Single Refills

1 – 120ml Tube Base33050
 1 – 15ml Tube Catalyst33020

Ramitec (Handmix) Polyether Accessories

5 – Ramitec Syringes72041

Directed Flow Impression Tray

Eliminate the need for a tray adhesive, and simplify both preliminary and final impressions with this innovative, single-use tray from 3M ESPE.

Indications

- Ideal for both preliminary and final impressions.

Preliminary impressions:

- Counter models.
- Study models.
- Matrix for temporary crowns and bridges.
- Orthodontic models.
- Bleaching trays.
- Mouthguards.
- Fabrication of splints.

Final impressions:

- Crown procedures.
- Bridge procedures.

Product Benefits

- Revolutionary self-retentive fleece strip eliminates the need for a tray adhesive for fewer handling steps.
- Simplified process saves time—up to five minutes per procedure.
- Retentive fleece features striations that act as a barrier to avoid tooth/tray contact and occlusal flat-spots for better impression results.
- Innovative, directed-flow design minimizes flow defects and distal voids for more accurate impressions.
- Surrounding retention lip reduces material overflows.
- Built-in reservoir reduces gagging for better patient comfort.
- Single-use tray means there is no need to disinfect and clean, as with metal trays, for improved infection control.
- Rigid material provides the stability that is ideal for both preliminary and final impressions.
- Tray can be customized, if necessary.
- Delivers outstanding quality, accurate results and easy handling.
- No unpleasant odor or mess from a tray adhesive.



Product Information

Item Number

Directed Flow Impression Tray Refills – Upper

10 – Trays, Size Small (S), Upper	71615
10 – Trays, Size Medium (M), Upper	71616
10 – Trays, Size Large (L), Upper	71617

Directed Flow Impression Tray Refills – Lower

10 – Trays, Size Small (S), Lower	71618
10 – Trays, Size Medium (M), Lower	71619
10 – Trays, Size Large (L), Lower	71620

Pentamix™ 3 Mixing Unit and Penta™ Accessories

Experience the speed, ease and accuracy of the Pentamix™ 3 Automatic Mixing Unit. With the touch of a button, it mixes and dispenses a completely homogeneous mix—faster than any other unit on the market. Includes one unit.

Indications

- Mixing and dispensing Penta™ Impression Materials.

Product Benefits

- Dispenses Penta impression materials in half the time of the Pentamix™ 2 Mixing Unit and faster than any other unit on the market.
- Saves counter space with the smallest footprint on the market.
- Easy handling with push-button control on both sides.
- Homogeneous mixing for void-free impressions.
- Less waste—dispenses only amount of material needed.
- Can be used with polyether, VPS and alginate replacement materials.



Product Information

Item Number

Pentamix 3 Unit	77876
(Materials and accessories not included)	
Penta Accessories	
50 – Penta Mixing Tips, Red	71512
1 – Wall Mount (Pentamix 3)	77601
1 – Wall Mount (Pentamix 2)	77600
2 – Plunger Disks (Pentamix 2)	77780
1 – Penta Elastomer Syringe Set	71210
1 Syringe	
4 Tips	
4 Barrels	
1 Brush	
12 – Syringe Intraoral Tips	71225
(Compatible only with Impregum™ F Elastomer Syringe)	
10 – Elastomer Syringe Barrels	71200
1 – Syringe Screw	71076
1 – Syringe Washer	71050
1 – Syringe Knurled Hub Cap	77720

Cartridge Dispenser and Accessories



Product Information	Item Number
Cartridge Dispenser and Accessories	
1 – Cartridge Dispenser 1:1/2:1	77580
50 – VPS Mixing Tips, Green	71450
50 – VPS Mixing Tips, Yellow	71452
50 – VPS Intraoral Tips, Yellow	71462
50 – VPS Intraoral Tips, Bite, Clear	71460
50 – Polyether Mixing Tips, White	71451
50 – Polyether Tray Mixing Tips, Purple	71454
50 – Polyether Intraoral Tips, White	71461N
1 – 17ml VPS Tray Adhesive	7307
1 – 17ml Polyether Tray Adhesive	30600

Intra-oral Syringe



Product Information	Item Number
Intra-oral Syringe Refills	
20 – Impregum™ Intra-oral Syringes, Purple	71470
20 – Imprint™ 3 Intra-oral Syringes, Green	71472

Elastomer Syringe Accessories



Product Information	Item Number
1 – Impregum™ F Elastomer Syringe with Filling Device	71209
Elastomer Syringe Spare Parts	
1 – Impregum F Elastomer Syringe Filling Device	71217
12 – Syringe Plastic Tips (Penta™ compatible)	71225
1 – Syringe Hub Cap (not compatible with Penta syringe)	71043
1 – Syringe Screw	71076
1 – Syringe Washer	71050
1 – Syringe Cleaning Brush	71068

Express™ Accessories



Product Information

Item Number

Express Accessories

1 – Cartridge Dispenser 1:1/2:1	77580
50 – VPS Mixing Tips, Yellow	71452
50 – VPS Intraoral Tips, Yellow	71462
1 – 17ml VPS Tray Adhesive	7307
2 – Putty Spoons	7314

Miscellaneous Accessories



Product Information

Item Number

Mixing Pads

10 – Universal, 2 1/2" x 3 1/2"	70144
10 – Impression, Small, 3 1/2" x 6"	70128
10 – Impression, Large, 4 3/4" x 7 1/2"	70190
10 – Impression, Extra Large, 5 3/4" x 9 1/4"	70180

Mixing Spatulas

1 – Standard	71233
--------------------	-------

Polyether Accessories

1 – 8ml Tube Retarder	30500
1 – 17ml Polyether Tray Adhesive	30600
1 – Impregum™ F Elastomer Tube Key	431218

Protemp™ Plus Temporization Material

Highest fracture resistance and gloss without polishing—Protemp™ Plus Temporization Material is the benchmark in strength and esthetics.

Indications

For single- and multiple-unit temporary restorations, including:

- Crowns and bridges.
- Inlays and onlays.
- Veneers.
- Also indicated for long-term temporization.

Product Benefits

- Record-breaking fracture resistance and toughness.
- Quick intraoral set; total set time of only five minutes.
- Smooth, glossy surface requires no polishing or glaze.
- Sophisticated filler technology provides strength and esthetics.
- Easy plaque removal to support gingival health.
- Six natural-looking shades designed to match Filtek™ Supreme Ultra Flowable Restorative.



Product Information

Item Number

Protemp Plus Temporization Material

Intro Kit – A2	46962
1 – 67g Cartridge Shade A2	
16 – Mixing Tips, Blue	
1 – Cartridge Dispenser 4:1/10:1	
1 – RelyX™ Temp NE Cement	
1 – Filtek™ Supreme Ultra Flowable Syringe Shade A2	
10 – Dispensing Tips	

Protemp Plus Temporization Material Refills

Shade A1	46955
Shade A2	46963
Shade A3	46958
Shade A3.5	46973
Shade B3	46961
Shade Bleach	46964

Protemp Plus Temporization Material Accessories

50 – Mixing Tips, Blue	71453
1 – Cartridge Dispenser 4:1/10:1	77581
1 – Plunger 4:1/10:1	77591

All Temporization Material Refills include 1 – 67g Cartridge; 16 – Mixing Tips, Blue

Protemp™ II Temporization Material

This bis-acrylic composite in a hand-mix formulation for direct chairside applications offers excellent esthetics, tight marginal seal with precision fit, and high compatibility.

Indications

For temporary restorations, including:

- Multiple-unit bridges.
- Full and partial crowns.
- Inlays and onlays.

Product Benefits

- Easy-to-extrude delivery system.
- Offers exceptionally tight marginal seal with precision fit.
- High biocompatibility.
- Suitable for long-term temporary fillings, crowns and bridges due to its high mechanical strength and precision fitting.
- Excellent esthetics due to great color stability, high polishability, and the choice of three intensive shades: A1 extra light, A3 light and B3 yellow. The shades can also be mixed with each other to allow better shade matching.



Product Information

Item Number

Protemp II Temporization Material	
Double Pack A1 Extra Light	46090
2 – 28g Base	
1 – 4.8g Catalyst	
1 – Syringe	
1 – Mixing Pad	
Protemp II Temporization Material	
Double Pack A3 Light	46100
2 – 28g Base	
1 – 4.8g Catalyst	
1 – Syringe	
1 – Mixing Pad	
Protemp II Temporization Material	
Double Pack B3 Yellow	46110
2 – 28g Base	
1 – 4.8g Catalyst	
1 – Syringe	
1 – Mixing Pad	
Protemp II Temporization Material Refills	
1 – 4.8g Catalyst	46430
5 – Syringes	72070

Protemp™ Crown Temporization Material

The world's first preformed, malleable temporary crown with a revolutionary technique that can result in higher productivity for you.

Indications

- Single-unit posterior temporization.
- Long-term temporization.
- Implant temporization.
- Digital impressioning.

Product Benefits

- Custom fit.
- Excellent strength.
- Natural-looking esthetics.
- Light curable.
- Low intraoral heat during fitting process.
- Low oxygen-inhibited layer.
- No unpleasant odor.
- Easy to add on flowable composite.



Product Information

Item Number

Protemp Crown Temporization Material Intro Kit 50600

42 – Temporary Crowns
 2 – (Bags of 10) Crown Size Tools
 Crown Drawer; Crown Drawer Labels

Temporary Crown Sizes

- | | |
|-------------------------------------|-------------------------------|
| 6 – Molar Upper Large | 6 – Molar Lower Large |
| 6 – Molar Upper Small | 6 – Molar Lower Small |
| 4 – Bicuspid (Premolar) Upper Large | 4 – Bicuspid (Premolar) Lower |
| 4 – Bicuspid (Premolar) Upper Small | |
| 3 – Cuspid (Canine) Large | |
| 3 – Cuspid (Canine) Small | |

Protemp Crown Temporization Material Trial Kit 50600TK

16 – Temporary Crowns
 1 – (Bag of 10) Crown Size Tools
 Technique CD

Temporary Crown Sizes

- | | |
|-------------------------------------|-------------------------------------|
| 3 – Molar Upper Large | 2 – Molar Lower Large |
| 3 – Molar Upper Small | 2 – Molar Lower Small |
| 2 – Bicuspid (Premolar) Upper Large | 2 – Bicuspid (Premolar) Upper Small |
| 2 – Bicuspid (Premolar) Lower | |

Protemp Crown Temporization Material Refills

Molar Upper Large 50610
Molar Upper Small 50611
Molar Lower Large 50612
Molar Lower Small 50613
Bicuspid (Premolar) Upper Large 50614
Bicuspid (Premolar) Upper Small 50615
Bicuspid (Premolar) Lower 50616
Cuspid (Canine) Large 50617
Cuspid (Canine) Small 50618

All Temporization Material Refills include 5 – Temporary Crowns; Crown Size Tool

Iso-Form™ Crowns

Prefabricated crowns made of tin-silver alloy for short-term adult posterior use.

Indications

- Short-term coverage: molar and bicuspid.

Product Benefits

- Pre-finished, contoured and belled to save placement time.
- Soft, tin-silver alloy retains shape of preparation and is easily stretched and burnished to fit prep margins.
- Bicuspid and molar crown selection to cover adult posterior applications.
- Faster placement than acrylics and chemical resin for single units for a quicker procedure.
- Crown set is packaged in a unique, stackable tray that provides convenient, easy storage of prefabricated crowns.



Product Information

Item Number

Iso-Form Bicuspid Crown Set BC-64
64 – Crowns

Iso-Form Molar Crown Set MC-64
64 – Crowns

Bicuspid Stretch Block SBB-4-5

Molar Stretch Block SMB-6-7

Product Information

Item Numbers

Refill Molar Crowns: 5 crowns of one size per box

UPPER					UPPER				
Left-First Molar					Right-First Molar				
U69	U67	U65	U63	U61	U60	U62	U64	U66	U68
Left-Second Molar					Right-Second Molar				
U79	U77	U75	U73	U71	U70	U72	U74	U76	U78
LOWER					LOWER				
Left-First Molar					Right-First Molar				
L69	L67	L65	L63	L61	L60	L62	L64	L66	L68
Left-Second Molar					Right-Second Molar				
L79	L77	L75	L73	L71	L70	L72	L74	L76	L78

Refill Bicuspid Crowns: 5 crowns of one size per box

UPPER					UPPER				
Left-First Bicuspid					Right-First Bicuspid				
U49	U47	U45	U43	U41	U40	U42	U44	U46	U48
Left-Second Bicuspid					Right-Second Bicuspid				
U59	U57	U55	U53	U51	U50	U52	U54	U56	U58
LOWER					LOWER				
Left-First Bicuspid					Right-First Bicuspid				
L49	L47	L45	L43	L41	L40	L42	L44	L46	L48
Left-Second Bicuspid					Right-Second Bicuspid				
L59	L57	L55	L53	L51	L50	L52	L54	L56	L58

Gold Anodized Crowns

Gold anodized crowns are made of medium-hard aluminum for short-term adult posterior use.

Indications

- Short-term coverage: molar and bicuspid.

Product Benefits

- Made from medium-hard aluminum for durability.
- Gold anodization minimizes metallic taste and galvanic shock.
- Bicuspid and molar crown selection to cover adult posterior applications.
- Crown set is packaged in a unique, stackable tray that provides convenient, easy storage.



Product Information

Item Number

Gold Anodized Molar Crown Set	942301
72 – Crowns	
Gold Anodized Bicuspid Crown Set	942501
80 – Crowns	

Product Information

Item Numbers

Refill Permanent Molars: 5 crowns of one size per box

First Molar						Second Molar		
UR-1	UR-2	UR-3	LR-1	LR-2	LR-3	LR+1	LR+2	LR+3
940321	940322	940323	940341	940342	940343	940441	940442	940443
UR-4	UR-5	UR-6	LR-4	LR-5	LR-6	LR+4	LR+5	LR+6
940324	940325	940326	940344	940345	940346	940444	940445	940446
UL-1	UL-2	UL-3	LL-1	LL-2	LL-3	LL+1	LL+2	LL+3
940311	940312	940313	940331	940332	940333	940431	940432	940433
UL-4	UL-5	UL-6	LL-4	LL-5	LL-6	LL+4	LL+5	LL+6
940314	940315	940316	940334	940335	940336	940434	940435	940436

Refill Permanent Bicuspid: 5 crowns of one size per box

UPPER			First Bicuspid			LOWER			Second Bicuspid								
UR 00 940519	UR1	UR2	LR•1	LR•2	LR•3	LR1	LR2	LR3	UR 00 940520	UR4	UR 5 940525	LR•4	LR•5	LR•6 940546	LR4	LR5	LR 6 940645
	940521	940522	940541	940542	940543	940641	940642	940643		940523	UR 6 940526	940544	940545	LR•0 940540	940644	940645	LR 0 940640
UR 00 940509	UL1	UL2	LL•1	LL•2	LL•3	LL1	LL2	LL3	UL 0 940510			LL•4	LL•5	LL•6 940536	LL4	LL5	LL 6 940636
	940511	940512	940531	940532	940533	940631	940632	940633				LL•4	LL•5	LL•0 940530	LL4	LL5	LL 0 940630
												LL•4	LL•5	LL•6 940536	LL4	LL5	LL 6 940636
												LL•4	LL•5	LL•0 940530	LL4	LL5	LL 0 940630

Polycarbonate Crowns

Prefabricated crowns made of a polycarbonate resin with microglass fibers for short- or longer-term adult anterior use.

Indications

- Adult anterior and bicuspid coverage.

Product Benefits

- Polycarbonate material contours and crimps similar to metal crowns to yield easy adaptation to margins.
- Made from polycarbonate resin with microglass fibers for strength and durability.
- Universal shade No. 62 can be adjusted using cements and liners for better esthetics.
- Ideal for short- or long-term use, providing the option of offering an esthetic, longer-term temporary for patients with economic considerations.
- Crown set is packaged in a unique, stackable tray that provides convenient, easy storage of 3M ESPE prefabricated crowns.



Product Information

Item Number

Polycarbonate Crown Set C-180
120 – Crowns

Product Information

Item Numbers

Refill Polycarbonate Anteriors: 5 crowns of one size per box

UPPER RIGHT						CENTRALS						UPPER LEFT	
100	101	10	11	12	13	14	15	16	17	18	19	102	103
UPPER RIGHT				LATERALS								UPPER LEFT	
2	20	21	22	23	24	25	26	27	28	29	200		
UPPER AND LOWER RIGHT						CUSPIDS						UPPER AND LOWER LEFT	
300	301	30	31	32	33	34	35	36	37	38	39	302	303
FIRST BICUSPIDS				SECOND BICUSPIDS									
40	41	42	43	44	54	53	52	51	50				
LOWER INCISORS (LONG)				LOWER INCISORS (SHORT)									
60	61	62	63	64	69	68	67	66	65				

Primary Stainless Steel Crowns

These prefabricated stainless steel crowns are manufactured with life-like height, contour and occlusal surface. They are pre-crimped at the cervical margin for fast and easy placement.

Indications

- Primary molar crown applications.

Product Benefits

- Pre-trimmed, belled and crimped for fast and easy placement.
- Accurately duplicates anatomy for better fit and performance.
- Superior longevity compared to multi-surface amalgam fillings.
- Permanent molar selection can be used for long-term cases with economic considerations.
- Crown set is packaged in a unique, stackable tray that provides convenient, easy storage of 3M ESPE prefabricated crowns.
- Wide array of shapes and sizes.
- Made in the U.S.A.
- High-quality stainless steel.



Product Information

Item Number

Stainless Steel Primary Molar Set ND96
96 – Crowns

Product Information

Item Numbers

Refill Primary Molars: 5 crowns of one size per box

First Upper Left						First Upper Right					
DUL2	DUL3	DUL4	DUL5	DUL6	DUL7	DUR2	DUR3	DUR4	DUR5	DUR6	DUR7
Second Upper Left						Second Upper Right					
EUL2	EUL3	EUL4	EUL5	EUL6	EUL7	EUR2	EUR3	EUR4	EUR5	EUR6	EUR7
First Lower Left						First Lower Right					
DLL2	DLL3	DLL4	DLL5	DLL6	DLL7	DLR2	DLR3	DLR4	DLR5	DLR6	DLR7
Second Lower Left						Second Lower Right					
ELL2	ELL3	ELL4	ELL5	ELL6	ELL7	ELR2	ELR3	ELR4	ELR5	ELR6	ELR7

Unitek™ Primary Stainless Steel Crowns

Prefabricated stainless steel crowns with proven successful clinical use for short- or long-term pediatric anterior and posterior use.

Indications

- Primary central, laterals, cuspids and molars.

Product Benefits

- Easy to customize.
- Shallow occlusal anatomy means less tooth reduction.
- Thick occlusal surface to prevent bite-through.
- Parallel walls allow for operator fit control.
- Pre-trimmed to optimum length and contour to save placement time.
- Crown set is packaged in a unique, stackable tray that provides convenient, easy storage of 3M ESPE prefabricated crowns.
- Wide array of shapes and sizes.
- Made in the U.S.A.
- High-quality stainless steel.



Product Information

Item Number

Unitek Primary Anterior Crown Set	908100
72 – Crowns	
Unitek Primary Molar Crown Set	902150
112 – Crowns	

Product Information

Item Numbers

Refill Primary Anterior: 5 crowns of one size per box

CENTRALS			LATERALS			CUSPIDS		
UL1 907001	UL2 907002	UL3 907003	UL1 907021	UL2 907022	UL3 907023	U1 907041	U2 907042	U3 907043
UL4 907004	UL5 907005	UL6 907006	UL4 907024	UL5 907025	UL6 907026	U4 907044	U5 907045	U6 907046
UR1 907011	UR2 907012	UR3 907013	UR1 907031	UR2 907032	UR3 907033	L1 907051	L2 907052	L3 907053
UR4 907014	UR5 907015	UR6 907016	UR4 907034	UR5 907035	UR6 907036	L4 907054	L5 907055	L6 907056

Refill Primary Molars: 5 crowns of one size per box

FIRST PRIMARY						SECOND PRIMARY					
UR1 900121	UR2 900122	UR3 900123	UR4 900124	UR5 900125	UR6 900126	UR1 900221	UR2 900222	UR3 900223	UR4 900224	UR5 900225	UR6 900226
UL1 900111	UL2 900112	UL3 900113	UL4 900114	UL5 900115	UL6 900116	UL1 900211	UL2 900212	UL3 900213	UL4 900214	UL5 900215	UL6 900216
LR1 900141	LR2 900142	LR3 900143	LR4 900144	LR5 900145	LR6 900146	LR1 900241	LR2 900242	LR3 900243	LR4 900244	LR5 900245	LR6 900246
LL1 900131	LL2 900132	LL3 900133	LL4 900134	LL5 900135	LL6 900136	LL1 900231	LL2 900232	LL3 900233	LL4 900234	LL5 900235	LL6 900236

Strip Crown Forms

Prefabricated, transparent strip crowns for primary anterior applications. The strip crowns are ideal for use with chemical or light-cured composites.

Indications

- Pediatric anterior crown applications.
- Ideal for use with chemical or light-cured composites.

Product Benefits

- Automatically contours restorative material to match natural dentition.
- Strips off easily leaving a smooth surface.
- Thin interproximal walls allow for tight contacts.
- Provides sufficient strength for easy handling.
- Ideal for use with chemical or light-cured composites.
- Crown set is packaged in a unique, stackable tray that provides convenient, easy storage.



Product Information

Item Number

Strip Crown Form Set 915100
120 – Crowns

Product Information

Item Numbers

Refill Primary Strip Crown Forms: 5 crowns of one size per box

UPPER CENTRALS			UPPER LATERALS		
Right			Left		
UR1 914011	UR2 914012	UR2 914012	UL1 914001	UL2 914002	UL2 914002
UR3 914013	UR3 914013	UR4 914014	UL3 914003	UL3 914003	UL4 914004
Right			Left		
UR1 914031	UR2 914032	UR2 914032	UL1 914021	UL2 914022	UL2 914022
UR3 914033	UR3 914033	UR4 914034	UL3 914023	UL3 914023	UL4 914024

Permanent Stainless Steel Crowns

These prefabricated stainless steel crowns are manufactured with life-like height, contour and occlusal surface. They are pre-crimped at the cervical margin for fast and easy placement.

Indications

- Permanent molar crown applications.

Product Benefits

- Pre-trimmed, belled and crimped for fast and easy placement.
- Accurately duplicates anatomy for better fit and performance.
- Superior longevity compared to multi-surface amalgam fillings.
- Permanent molar selections can be used for long-term cases with economic considerations.
- Crown set is packaged in a unique, stackable tray that provides convenient, easy storage of 3M ESPE prefabricated crowns.
- Wide array of shapes and sizes.
- Made in the U.S.A.
- High-quality stainless steel.



Product Information

Item Number

Stainless Steel Permanent Molar SetP096
96 – Crowns

Product Information

Item Numbers

Refill Permanent Molars: 5 crowns of one size per box

Upper Left						Upper Right					
6UL2	6UL3	6UL4	6UL5	6UL6	6UL7	6UR2	6UR3	6UR4	6UR5	6UR6	6UR7
Lower Left						Lower Right					
6LL2	6LL3	6LL4	6LL5	6LL6	6LL7	6LR2	6LR3	6LR4	6LR5	6LR6	6LR7

Unitek™ Permanent Stainless Steel Crowns

Prefabricated stainless steel crowns with proven successful clinical use for short- or long-term adult posterior use. Refills of individual crowns are available in boxes of five.

Indications

- Permanent molar and bicuspid crown applications.

Product Benefits

- Easy to customize.
- Shallow occlusal anatomy means less tooth reduction.
- Thick occlusal surface to prevent bite-through.
- Parallel walls allow for operator fit control.
- Pre-trimmed to optimum length and contour to save placement time.
- Available in molar and bicuspid styles to meet your adult patient needs.
- Crown set is packaged in a unique, stackable tray that provides convenient, easy storage of 3M ESPE prefabricated crowns.
- Wide array of shapes and sizes.
- Made in the U.S.A.
- High-quality stainless steel.



Product Information

Item Number

Unitek Permanent Molar Crown Set	902350
80 – Crowns	
Unitek Permanent Bicuspid Crown Set	902600
88 – Crowns	

Product Information

Item Numbers

Refill Permanent Molars: 5 crowns of one size per box

First Molar						Second Molar		
UR-1 900321	UR-2 900322	UR-3 900323	UR-4 900324	UR-5 900325	UR-6 900326	LR+1 900441	LR+2 900442	LR+3 900443
UL-1 900311	UL-2 900312	UL-3 900313	UL-4 900314	UL-5 900315	UL-6 900316	LR+4 900444	LR+5 900445	LR+6 900446
LR-1 900341	LR-2 900342	LR-3 900343	LR-4 900344	LR-5 900345	LR-6 900346	LL+1 900431	LL+2 900432	LL+3 900433
LL-1 900331	LL-2 900332	LL-3 900333	LL-4 900334	LL-5 900335	LL-6 900336	LL+4 900434	LL+5 900435	LL+6 900436

Refill Permanent Bicuspid: 5 crowns of one size per box

UPPER First and Second Bicuspid*			LOWER First Bicuspid			LOWER Second Bicuspid		
UR1 900521	UR2 900522	UR3 900523	LR•1 900541	LR•2 900542	LR•3 900543	LR1 900641	LR2 900642	LR3 900643
UR4 900524	UR 5 900525 UR 0 900520	UR 6 900526 UR 00 900519	LR•4 900544	LR•5 900545	LR•6 900546 LR•0 900540	LR4 900644	LR5 900645	LR 6 900646 LR 0 900640
UL1 900511	UL2 900512	UL3 900513	LL•1 900531	LL•2 900532	LL•3 900533	LL1 900631	LL2 900632	LL3 900633
UL4 900514	UL 5 900515 UL 0 900510	UL 6 900516 UL 00 900509	LL•4 900534	LL•5 900535	LL•6 900536 LL•0 900530	LL4 900634	LL5 900635	LL 6 900636 LL 0 900630

*Upper first and second bicuspid utilize the same crown.

Crown Crimping Pliers

A crown pliers specially designed to crimp the gingival margin of stainless steel and temporary crowns.

Crown Contouring Pliers

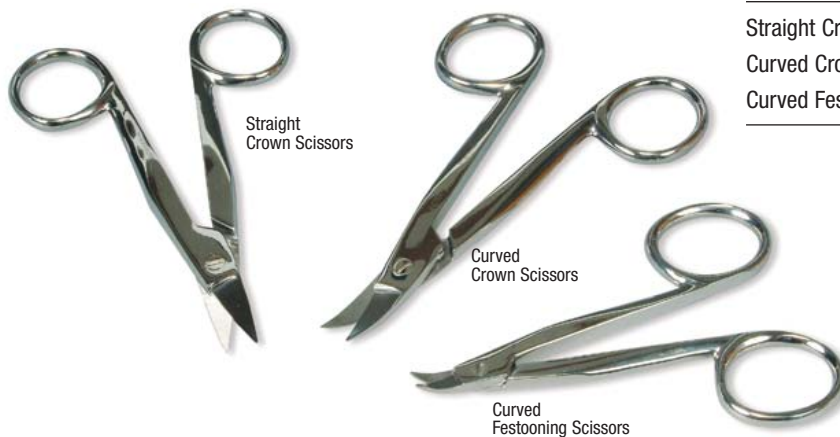
A crown contouring pliers for enhancing crown-form contours to improve interproximal contacts and gingival margins for stainless steel and temporary crowns.



Product Information	Item Number
Crimping Pliers	800417
Small Crimping Pliers	800421
Contouring Pliers	800112

Crown Scissors

Scissors are used for trimming the margins of 3M ESPE pre-formed crowns.



Product Information	Item Number
Straight Crown Scissors	801201
Curved Crown Scissors	801202
Curved Festooning Scissors	801203

RelyX™ Unicem 2 Self-Adhesive Resin Cement

For simplicity powered by performance, rely on this enhanced, next-generation formula in easy-to-use delivery systems.

Indications

Permanent cementation of:

- All-ceramic, composite, or metal inlays, onlays, crowns and bridges.
- Posts.
- 3-unit inlay/onlay bridges.
- All-ceramic, composite, or metal restorations to implant abutments.
- 2- or 3-unit Maryland bridges.

Product Benefits

- Convenient dispensing.
- Time-saving—no etching,* priming or bonding.
- Virtually no post-operative sensitivity.
- Easy removal of excess.
- Optimal consistency.
- Strong and moisture-tolerant.
- Your choice of delivery: Automix Syringe or Clicker™ Dispenser.

*Except for 2- or 3-unit Maryland bridges and 3-unit inlay/onlay bridges. Selective etching is required to increase surface area for bonding.

Product Information	Item Number
RelyX Unicem 2 Automix Value Packs	
Shade Translucent	56858
3 – 8.5g Syringes	
30 – Mixing Tips (regular)	
20 – Mixing Tips (wide)	
15 – Endo Tips	
5 – Intra-Oral Tips	
Shade A2 Universal	56849
3 – 8.5g Syringes	
30 – Mixing Tips (regular)	
20 – Mixing Tips (wide)	
15 – Endo Tips	
5 – Intra-Oral Tips	
Shade A3 Opaque	56857
3 – 8.5g Syringes	
30 – Mixing Tips (regular)	
20 – Mixing Tips (wide)	
15 – Endo Tips	
5 – Intra-Oral Tips	



Product Information	Item Number
RelyX Unicem 2 Automix Refills	
Shade Translucent	56848
1 – 8.5g Syringe	
15 – Mixing Tips (regular)	
5 – Mixing Tips (wide)	
5 – Endo Tips	
Shade A2 Universal	56846
1 – 8.5g Syringe	
15 – Mixing Tips (regular)	
5 – Mixing Tips (wide)	
5 – Endo Tips	
Shade A3 Opaque	56847
1 – 8.5g Syringe	
15 – Mixing Tips (regular)	
5 – Mixing Tips (wide)	
5 – Endo Tips	
RelyX Unicem 2 Clicker™ Dispenser Refills	
Shade Translucent	56874
1 – 11.0g Clicker Dispenser	
1 – Mixing Pad (70144)	
Shade A2 Universal	56875
1 – 11.0g Clicker Dispenser	
1 – Mixing Pad (70144)	
Shade A3 Opaque	56876
1 – 11.0g Clicker Dispenser	
1 – Mixing Pad (70144)	
RelyX™ Fiber Post/RelyX Unicem 2 Automix Self-Adhesive Resin Cement Starter Kit – A2 Universal	
1 – 8.5g Syringe – Shade A2 Universal	56850
7 – Mixing Tips (regular)	
15 – Mixing Tips (wide)	
15 – Endo Tips	
5 – Intra-Oral Tips	
1 – 5 piece Fiber Post Refill each:	
Size 0 (White), Size 1 (Yellow), Size 2 (Red), Size 3 (Blue)	
5 – Drills: Size 0, Size 1, Size 2, Size 3 and a Universal Drill	
RelyX Unicem 2 Automix Mix Tips	
30 – Mixing Tips (regular)	56851
20 – Mixing Tips (wide)	56856
15 – Endo Tips	56855
15 – Intra-Oral Tips	56852

RelyX™ Unicem Self-Adhesive Resin Cement

The most clinically proven self-adhesive resin cement, trusted by dentists worldwide.

Indications

Permanent cementation of:

- All-ceramic, composite, or metal inlays, onlays, crowns and bridges.
- Posts.
- 3-unit inlay/onlay bridges.
- All-ceramic, composite, or metal restorations to implant abutments.
- 2- or 3-unit Maryland bridges.

Product Benefits

- Time-saving—no etching,* priming or bonding.
- Virtually no post-operative sensitivity.
- Easy removal of excess.
- Optimal consistency.
- Strong and moisture-tolerant.

*Except for 2- or 3-unit Maryland bridges and 3-unit inlay/onlay bridges. Selective etching is required to increase surface area for bonding.

Product Information	Item Number
RelyX Unicem Cement Intro Kit (Aplicap™) Capsule	56814
50 – Aplicap Capsules in assorted shades	
24 – A2 Universal	
16 – Translucent	
10 – A3 Opaque	
1 – Aplicap Activator/Applier Set	
RelyX Unicem Cement Intro Kit (Maxicap™) Capsule	56830
20 – Maxicap Capsules in assorted shades	
10 – A2 Universal	
6 – Translucent	
4 – A3 Opaque	
1 – Maxicap Activator/Applier Set	
RelyX Unicem Cement Trial Kit (Aplicap) Capsule	56829
20 – Aplicap Capsules in assorted shades	
10 – A2 Universal	
6 – Translucent	
4 – A3 Opaque	
1 – Aplicap Activator/Applier Set	



Product Information

Item Number

RelyX Unicem Cement Aplicap™ Capsule Refills

50 – Aplicap Capsules in assorted shades	56815
24 – A2 Universal	
16 – Translucent	
10 – A3 Opaque	
10 – Elongation Tips	

50 – Translucent Aplicap Capsules, 10 – Elongation Tips	56816
---	-------

50 – A3 Opaque Aplicap Capsules, 10 – Elongation Tips	56817
---	-------

50 – A2 Universal Aplicap Capsules, 10 – Elongation Tips	56818
--	-------

20 – A1 Aplicap Capsules	56819
------------------------------------	-------

20 – White Opaque Aplicap Capsules	56820
--	-------

RelyX Unicem Cement Maxicap™ Capsule Refills

20 – Maxicap Capsules in Assorted Shades	56831
10 – A2 Universal	
6 – Translucent	
4 – A3 Opaque	

20 – Translucent Maxicap Capsules	56832
---	-------

20 – A3 Opaque Maxicap Capsules	56833
---	-------

20 – A2 Universal Maxicap Capsules	56834
--	-------

RelyX Unicem Cement Accessories

Combination Pack	37160
----------------------------	-------

1 – Activator, Aplicap

1 – Applier, Aplicap

1 – Activator, Aplicap	73040
----------------------------------	-------

1 – Applier, Aplicap	73050
--------------------------------	-------

Combination Pack	37180
----------------------------	-------

1 – Activator, Maxicap

1 – Applier, Maxicap

1 – Activator, Maxicap	73060
----------------------------------	-------

1 – Applier, Maxicap	73070
--------------------------------	-------

**Each Clicker dispenser contains 11.0 grams of material, dispensed in 80 clicks (approximately 40 applications).

RelyX™ Fiber Post

Strong and long-lasting RelyX™ Fiber Posts are designed to make excellent clinical results easy to achieve.

Indications

- Supporting and securing coronal restorations in cases with insufficient residual tooth structure.

Product Benefits

RelyX™ Fiber Post

- Elasticity of RelyX Fiber Post is similar to human dentin for a lower risk of root fracture due to the “wedge effect.”
- Unique resin composition and equally dispersed parallel fibers lead to superior mechanical strength.
- Microporous surface allows for additional bond strength through microretentive effects.
- Excellent light translucency for efficient light cure deep into the root canal.
- Improved radiopacity is among the highest of available glass fiber posts.
- RelyX™ Unicem System makes cementing a post fast, easy and reliable.

Elongation Tip

- Unique design allows for elongation tip to reach into the root canal from bottom to top.
- Virtually eliminates voids which can compromise bond strength.
- Tip makes the entire procedure faster, easier and more reliable.

Endo Tip

- For easy delivery of RelyX™ Unicem 2 Automix Self-Adhesive Resin Cement in endo procedures.

Product Information	Item Number
---------------------	-------------

RelyX Fiber Post Intro Kit	56860
---	-------

- | | |
|--|--|
| 5 – Size 1 Post (1.3mm dia.) | |
| 5 – Size 2 Post (1.6mm dia.) | |
| 5 – Size 3 Post (1.9mm dia.) | |
| 4 – Drills: Size 1, Size 2, Size 3 and a Universal Drill | |
| 20 – Elongation Tips | |

RelyX Fiber Post/RelyX Unicem 2 Automix Self-Adhesive Resin Cement Starter Kit – A2 Universal	56850
--	-------

- | | |
|--|--|
| 1 – 8.5g Syringe – Shade A2 Universal | |
| 7 – Mixing Tips (regular) (56851) | |
| 15 – Mixing Tips (wide) (56856) | |
| 15 – Endo Tips (56855) | |
| 5 – Intra-Oral Tips (56852) | |
| 1 – 5 piece Fiber Post Refill each: | |
| Size 0 (White), Size 1 (Yellow), Size 2 (Red), Size 3 (Blue) | |
| 5 – Drills: Size 0, Size 1, Size 2, Size 3 and a Universal Drill | |



Product Information	Item Number
---------------------	-------------

RelyX Fiber Post/RelyX Unicem Cement Combination Kit	56868
---	-------

- | | |
|--|--|
| 5 – Size 1 Post (1.3mm dia.) | |
| 5 – Size 2 Post (1.6mm dia.) | |
| 5 – Size 3 Post (1.9mm dia.) | |
| 4 – Drills: Size 1, Size 2, Size 3 and a Universal Drill | |
| 20 – Elongation Tips | |
| 20 – RelyX Unicem Cement Aplicap™ Capsules, Assorted | |
| 1 – Aplicap Activator/Applier Set | |

RelyX™ Unicem Self-Adhesive Universal Resin Cement Trial Kit	56829
---	-------

- | | |
|--|--|
| 20 – Aplicap Capsules in assorted shades | |
| 10 – A2 Universal | |
| 6 – Translucent | |
| 4 – A3 Opaque | |
| 1 – Aplicap Activator/Applier Set | |

RelyX Fiber Post Refills	56872
---	-------

- | | |
|--|-------|
| 10 – RelyX Fiber Posts – Size 0 (White) | 56861 |
| 10 – RelyX Fiber Posts – Size 1 (Yellow) | 56862 |
| 10 – RelyX Fiber Posts – Size 2 (Red) | 56863 |
| 10 – RelyX Fiber Posts – Size 3 (Blue) | |

RelyX Fiber Post Drill Refills	56873
---	-------

- | | |
|--|---|
| 10 – RelyX Fiber Post Drill – Size 0 | 56864 |
| 10 – RelyX Fiber Post Drill – Size 1 | 56865 |
| 10 – RelyX Fiber Post Drill – Size 2 | 56866 |
| 10 – RelyX Fiber Post Drill – Size 3 | 56867 |
| 10 – RelyX Fiber Post Drill – Reamer/Universal | 56855 |
| 15 – RelyX Unicem 2 Automix Endo Tips | (Tips for use with RelyX Unicem 2 Automix Cement) |

RelyX Unicem Cement Aplicap Capsule Refills	56815
--	-------

- | | |
|--|--|
| 50 – Aplicap Capsules in assorted shades | |
| 24 – A2 Universal | |
| 16 – Translucent | |
| 10 – A3 Opaque | |

Aplicap Elongation Tips	77550
--	-------

- | | |
|---|--|
| 10 – Aplicap Elongation Tips | |
| (Tips for use with RelyX Unicem Aplicap Capsules) | |

RelyX™ Luting Plus Cement

The advanced resin-modified glass ionomer formula is designed to make your job easier with convenient paste-paste delivery in the Clicker™ Dispenser.

Indications

For permanent cementation of:

- Metal crowns, inlays and onlays (includes stainless steel crowns).
- Porcelain-fused-to-metal crowns and bridges.
- All-zirconia or all-alumina strengthened core ceramic restorations (such as Lava™ or Procera®).
- Endodontic pins and posts.
- Orthodontic bands.

Product Benefits

- Convenient paste-paste delivery in the Clicker dispenser.
- Consistent mix ratios.
- Advanced formula for better performance: enhanced marginal integrity with low solubility, and increased adhesion and shear bond strength on dentin and enamel cementations.
- Easy to mix, load and seat.
- Easy cleanup.
- High strength.
- Low post-operative sensitivity.
- Sustained fluoride release.

RelyX™ Luting Cement

A hybrid glass ionomer permanent cement that is fast-setting, strong and easy to use.

Indications

For permanent cementation of:

- Metal crowns, inlays and onlays (includes stainless steel crowns).
- Porcelain-fused-to-metal crowns and bridges.
- All-zirconia or all-alumina strengthened core ceramic restorations (such as Lava™ or Procera®).
- Endodontic pins and posts.
- Orthodontic appliances.

Product Benefits

- Mousse-like consistency allows for easy mixing, loading and seating.
- Zero solubility provides enhanced marginal integrity.
- High fracture toughness for durability.
- Hybrid glass ionomer offers sustained fluoride release.
- Virtually no post-operative sensitivity for better patient comfort.



Product Information

Item Number

RelyX Luting Plus Cement Trial Kit 3525TK
1 – 11.0g Clicker Dispenser

RelyX Luting Plus Cement Refills
2 – 11.0g Clicker Dispensers. 3525



Product Information

Item Number

RelyX Luting Cement Intro Kit 3505
1 – 16g RelyX Luting Cement Powder
1 – 9ml RelyX Luting Cement Liquid
Spoon, Mixing Pads (1961P)

RelyX Luting Cement Refills
1 – 16g RelyX Luting Cement Powder, Spoon 3505P
1 – 9ml RelyX Luting Cement Liquid 3505L
1 – Mixing Pad (1961P) 1961P

RelyX™ Veneer Cement

The easy-to-use veneer cement that provides excellent esthetic results.

Indications

- Cementing porcelain, composite and ceramic veneer restorations.

Product Benefits

- Customer-preferred delivery and shading system.
- Try-In Pastes offer excellent color match to final cured cement.
- Light-cure-only system provides excellent color stability.
- Easy to clean up.
- Easy to dispense, apply and seat.
- Cement cures with a wide range of light sources.

Product Information

Item Number

RelyX Veneer Cement Intro Kit 7613

1 – 3g Syringe each of RelyX Veneer Cement in shades

A1/Light Yellow

A3 Opaque/Yellow Opaque

White Opaque

Translucent

B0.5/White

1 – 2g Syringe each of RelyX Try-In Paste in shades

A1/Light Yellow

A3 Opaque/Yellow Opaque

White Opaque

Translucent

B0.5/White

1 – 6g Adper Single Bond Plus Adhesive

1 – 5ml RelyX Ceramic Primer

1 – 3ml Scotchbond Phosphoric Etchant Syringe

Disposable Mix Wells, Brush Handle, Etchant Dispensing Tips, Disposable Applicator Brush Tips, Fiber Tip Applicators and Bendable Brushes

RelyX Veneer Cement Trial Kit 7613TK

1 – 3g Syringe RelyX Veneer Cement, Translucent

1 – 2g Syringe RelyX Try-In Paste, Translucent

1 – 5ml RelyX Ceramic Primer

1 – 3ml Scotchbond™ Phosphoric Etchant Syringe

25 – Scotchbond™ Phosphoric Etchant Dispensing Tips

20 – Adper™ Single Bond Plus Adhesive Unit-Dose Applicators



Product Information

Item Number

RelyX Veneer Cement Refills

1 – 3g Translucent RelyX Veneer Cement Syringe 7614TR

1 – 3g White Opaque RelyX Veneer Cement Syringe 7614W0

1 – 3g A1/Light Yellow RelyX Veneer Cement Syringe 7614A1

1 – 3g A3 Opaque/Yellow Opaque RelyX Veneer Cement Syringe 7614A3

1 – 3g A5 Opaque/Dark RelyX Veneer Cement Syringe 7614A5

1 – 3g B0.5/White RelyX Veneer Cement Syringe 7614B0.5

1 – 2g Translucent RelyX Try-In Paste Syringe 7614TRT

1 – 2g White Opaque RelyX Try-In Paste Syringe 7614W0T

1 – 2g A1/Light Yellow RelyX Try-In Paste Syringe 7614A1T

1 – 2g A3 Opaque/Yellow Opaque RelyX Try-In Paste Syringe 7614A3T

1 – 2g A5 Opaque/Dark RelyX Try-In Paste Syringe 7614A5T

1 – 2g B0.5/White RelyX Try-In Paste Syringe 7614B0.5T

RelyX™ ARC Adhesive Resin Cement

A resin cement that's as easy to work with as it is strong.

Indications

- Porcelain-fused-to-metal crowns and bridges.
- Metal crowns, bridges, inlays and onlays (high noble, noble and base metals).
- Crowns and bridges with minimal tooth structure.
- Maryland bridges (resin-bonded bridges).
- All ceramic/porcelain and pre-cured composite crowns, bridges, inlays and onlays.
- Endodontic posts.
- Adhesive (bonded) amalgam restorations.

Product Benefits

- Bonds indirect restorations securely, yet the excess comes off quickly and cleanly without scraping or grinding.
- Reliable and versatile cement adheres strongly to metals, porcelain, ceramic, pre-cured composite, enamel or dentin.
- Clicker™ Dispenser delivers the resin cement in uniform, precise dosages with less waste.
- Unique paste-paste formulation in the Clicker Dispenser provides easy mixing, loading, seating and cleanup.
- Available in two natural tooth-colored shades for better blending: Transparent (A1) and Universal (A3).



Product Information

Item Number

RelyX ARC Adhesive Resin Cement Intro Kit 3415
 1 – 4.5g A1 Transparent Clicker Dispenser
 1 – 4.5g A3 Universal Clicker Dispenser
 1 – 6g Adper™ Single Bond Adhesive Vial
 1 – 5ml RelyX™ Ceramic Primer Vial
 2 – 3ml Scotchbond™ Phosphoric Etchant Syringes
 Etchant Tips, Brush Tips/Handles, Fiber Tip Applicators,
 Disposable Mixing Wells, Bendable Brushes, Mixing Pads,
 Mixing Sticks, Mini-Sponges

RelyX ARC Adhesive Resin Cement Refills

1 – 4.5g A1 Transparent in Clicker Dispenser 3415A1
 1 – 4.5g A3 Universal in Clicker Dispenser 3415A3

Ketac™ Cem Radiopaque Permanent Glass Ionomer Luting Cement

This permanent glass ionomer luting cement offers fluoride release, optimal fit and marginal integrity.

Indications

- Cementing of crowns and bridges, inlays, posts and screws, and orthodontic bands.
- Cavity lining.

Product Benefits

- Glass ionomer luting cement offers chemical bond to enamel and dentin.
- Releases fluoride.
- High biocompatibility.
- Extremely low film thickness optimizes fit and marginal integrity.
- Radiopaque.



Product Information

Item Number

Ketac Cem Radiopaque Cement Intro Kit	37201
1 – 33g Powder	
1 – 12ml Liquid	
1 – Mixing Pad (70144)	
Ketac Cem Radiopaque Cement Triple Pack	37231
3 – 33g Powder	
3 – 12ml Liquid	
3 – Mixing Pads (70144)	
Ketac Cem Radiopaque Cement Giant Pack	37251
10 – 33g Luting Powder	
10 – 12ml Liquid	
5 – Mixing Pads (70144)	
Ketac Cem Radiopaque Cement Refills	
1 – 12ml Liquid	37221
1 – 33g Powder	37211

Ketac™ Cem Aplicap™/Maxicap™ Permanent Glass Ionomer Luting Cement

This permanent glass ionomer luting cement offers fluoride release, optimal fit and marginal integrity.

Indications

- Cementing of crowns and bridges, inlays, posts and screws, and orthodontic bands.
- Cavity lining.

Product Benefits

- Glass ionomer luting cement offers chemical bond to enamel and dentin.
- Releases fluoride.
- High biocompatibility.
- Extremely low film thickness optimizes fit and marginal integrity.
- Radiopaque.



Product Information

Item Number

Ketac Cem Aplicap Cement Capsule Intro Kit	56053
50 – Capsules	
1 – Activator	
1 – Applier	
Mixing Pads (70144)	
Ketac Cem Aplicap Cement Refill	56061
50 – Aplicap Capsules	
Ketac Cem Maxicap Cement Capsule Intro Kit	56015
50 – Capsules	
1 – Activator	
1 – Applier	
Mixing Pads (70144)	
Ketac Cem Maxicap Cement Refill	56021
50 – Maxicap Capsules	

Durelon™ Carboxylate Luting Cement

With regular-set or fast-set powder, this fluoride-releasing, carboxylate luting cement attains a relatively neutral pH value that reduces post-cementation sensitivity.

Indications

- Cementing of crowns and bridges, inlays and onlays.
- Cavity lining.

Product Benefits

- Attains a relatively neutral pH level for better patient tolerance.
- Low film thickness optimizes fit and marginal integrity of crowns and bridges.
- Releases fluoride.
- Adhesion to both enamel and dentin for reduced microleakage.
- Available in three delivery systems: two hand-mix versions, with the liquid dispensed in either a bottle or a calibrated syringe dispenser that delivers exact doses of liquid for increased control, and the Maxicap™ capsule delivery for easy, automatic mixing and direct application.



Product Information

Item Number

Durelon Carboxylate Luting Cement Intro Kit	38019
1 – 20g Powder, Regular Set	
1 – 14ml Liquid	
1 – Mixing Pad (70144)	
Durelon Carboxylate Luting Cement Triple Pack	38234
3 – 20g Powder, Regular Set	
40ml Liquid	
Mixing Pads (70144)	
Durelon Carboxylate Luting Cement Refills	
40ml Triple Liquid	38216
3 – 20g Powder: Regular Set.	38236
3 – 20g Powder: Fast Set	38237
Durelon CD (Calibrated Dispenser)	
Durelon Carboxylate Luting Cement Intro Kit	38059
1 – 20g Powder	
14ml Liquid CD (4 Dispensers)	
Durelon Carboxylate Luting Cement Triple Pack	38235
3 – 20g Powder	
40ml Liquid CD (12 Dispensers)	
40ml Triple Liquid CD (12 Dispensers)	38267
Durelon Maxicap™ Capsule Kit	
20 – Maxicap Capsules	56310

RelyX™ Temp NE Temporary Cement

A eugenol-free temporary cement offers strong adhesion to the tooth, yet allows easy removal of the temporary restoration.

Indications

- Cementing temporary restorations.
- Provisional cementation of permanent restorations.

Product Benefits

- Extremely low film thickness helps ensure an optimal fit.
- Strong adhesion offers high retention to the tooth, yet it is removed easily for final cementation.
- Eugenol-free for universal indications because it will not inhibit the polymerization of composite resin cements. It's compatible with temporary crown and bridge materials, composite resin cements and composite resin core build-up materials.
- Minimizes the need for time-consuming cleaning of the preparation because the majority of the cement remains on the temporary restoration, not on the tooth surface.



Product Information

Item Number

RelyX Temp NE Temporary Cement	56660
1 – 36g Base Paste	
1 – 16g Catalyst Paste	
1 – Mixing Pad (70144)	

RelyX™ Temp E Temporary Cement

A temporary cement with a zinc-oxide, eugenol base for crown and bridge procedures.

Indications

- Cementing temporary crown and bridge restorations.
- Provisional cementation of permanent crown and bridge restorations.

Product Benefits

- Easy removal of the excess cement from the tooth and the prosthesis.
- Has a sedative effect on the pulp due to the eugenol content.



Product Information

Item Number

RelyX Temp E Temporary Cement	35014
1 – 25g Base Paste	
1 – 18g Catalyst Paste	
1 – Mixing Pad (70144)	

RelyX™ Ceramic Primer

A prehydrolyzed, silane-based primer designed to enhance bonds to porcelain, ceramic, pre-cured composite and metal surfaces.

Indications

- Silanization of ceramic or metal restorations before cementation.
- Silanization of metal or ceramic during repairs of ceramic.
- Chairside repair of damaged ceramic crowns and bridges.
- Must be used with a dental bonding system.

Product Benefits

- Enhances bonds to porcelain, ceramic, composite and metal surfaces for improved performance.



Product Information

Item Number

RelyX Ceramic Primer

1 – 5ml Vial 2721

RotoMix™ Capsule Mixing Unit

A rotational/centrifugal capsule mixing unit that's easy to use and optimizes physical properties of the materials by delivering a completely homogeneous mix while significantly reducing porosity.

Indications

- Mixing dental materials in capsules.

Product Benefits

- Easy loading and unloading of capsules.
- Touchpad features both pre-programmed and programmable setting options for simple operation.
- Typical mixing speed: 2850 rotations per minute;
Typical centrifuging speed: 2950 rotations per minute.
- Extremely quiet operation.
- Rotating platform with simultaneously counter-rotating capsule holder produces the most complete mix.
- Automatic centrifugal cycle produces a denser mix and virtually void-free material.



Product Information

Item Number

RotoMix Capsule Mixing Unit (120V/60Hz)	76310
---	-------

Aplicap™/Maxicap™ Accessories



Product Information	Item Number
Aplicap/Maxicap Accessories	
Aplicap Accessories Combination Pack	37160
1 – Activator, Aplicap	
1 – Applier, Aplicap	
1 – Activator, Aplicap	73040
1 – Applier, Aplicap	73050
Maxicap Accessories Combination Pack	37180
1 – Activator, Maxicap	
1 – Applier, Maxicap	
1 – Activator, Maxicap	73060
1 – Applier, Maxicap	73070

The long-term solution you can trust.

3M™ ESPE™ MDI Mini Dental Implants are changing patients' lives.

In our 1-day exclusive workshop, you can master the basics and **start immediately** to build your practice with this faster, widely affordable procedure that has denture wearers excited.

Learn from Top MDI Experts

Designed for general dentists and their teams.

This workshop class size is limited to enable one-on-one time with the course instructor. Learn MDI surgical and prosthetic protocols through case presentations and hands-on practice.

MDI Certification Course Objective

To help dentists master the basics of minimally invasive implantology, including:

- Indications for MDI denture treatment
- Successful case selection and planning strategies
- MDI placement and protocol for stabilization of lower dentures
- Nuances of maxillary MDI denture cases
- MDI restorative protocols
- Valuable practice-building strategies



How to Register

Simply visit

www.3MESPE.com/ImplantSeminars

and register online today for a one-day
Expertise™ Certification Seminar by 3M ESPE
in your area!

MDI Surgical Kit

The MDI Surgical Kit includes a surgical box and all the surgical instruments needed to get you started placing MDI implants.



Product Information	Item Number
MDI Surgical Kit	MDISK01
1 – MDI Surgical Box	
1 – Adjustable Torque Wrench	
1 – Ratchet Wrench	
1 – 5mm MDI Ratchet Adapter, Short	
1 – MDI Finger Driver	
1 – MDI Winged Thumb Wrench	
25 – Blockout Shims	
1 – 1.1mm MDI Surgical Drill (Sterile)	

MDI Basic Package

This package includes 20 implants along with the instruments and supplies you need to begin placing MDI implants. The purchase of this package gives you complete access to the 3M ESPE MDI Clinical Support Network.

20 MDI Implants



Product Information	Item Number
MDI Basic Package (20 Implants)	MDISS18
Includes: 16 – 1.8mm Implants, and 4 – 2.4mm Implants	
1 – MDI Surgical Kit	
4 – 1.8mm x 10mm MDI Collared Intermediate O-Ball	
8 – 1.8mm x 13mm MDI Collared Intermediate O-Ball	
4 – 1.8mm x 15mm MDI Collared Intermediate O-Ball	
4 – 2.4mm x 13mm MDI Max with O-Ball Head and Collar	
8 – Standard Metal Housing	
12 – Micro Metal Housing	
5 – 1.1mm MDI Surgical Drill	
1 – Soft Secure Kit	
1 – Hard Secure Kit	
Complete Access to 3M ESPE's MDI Clinical Support Network	



Standard Metal Housing



Micro Metal Housing

MDI Practice-Building Kit

The MDI Practice-Building Kit includes everything you need to market the MDI treatment to new and existing patients.



Product Information	Item Number
MDI Practice-Building Kit	65006
1 – Acrylic Model	
1 – PCC (Dr. Gordon Christensen) DVD	
1 – MDI Patient Testimonial DVD	
100 – MDI Patient Education Brochures	
1 – MDI Case Acceptance Flip Chart	
1 – MDI Waiting Room Placard	
Your Practice Listed in "Locate a Dentist" Tool on www.mymdistory.com	

Lava™ Chairside Oral Scanner C.O.S.

3D-in-Motion technology captures and allows dentists to simultaneously view continuous 3D video images to create a digital impression on a touchscreen monitor.

Product Benefits

Productivity:

- Reduce seating times.*
- <1% remake rate due to marginal fit.*
- Eliminate several steps, including tray selection, dispensing and setting of materials, disinfecting and shipping impressions.

Flexibility:

- Prescribe PFM or CAD/CAM restorations, including Lava™ Restorations.
- Work with your current lab.

Patient Comfort:

- Patients prefer a Lava C.O.S. digital impression versus a traditional impression.*

Revolutionary Technology:

- Capture and simultaneously view continuous 3D video images on touchscreen monitor with 3D-in-Motion technology.
- Assess preparation and margin using powerful tools unique to digital dentistry.

*Source: 3M ESPE internal data



Product Information

Item Number

Lava Chairside Oral Scanner C.O.S.

Digital Impression System	69093
1 – Lava C.O.S. Cart with Monitor and Scanning Wand; Lava C.O.S. Software; Wireless Access Point	
1 – Sample Kit of Consumables	
2 – 3.75g Bottles Powder	
1 – Disposable Wand Sheath, 100/Pack	
1 – Tip Target	
2 – Pairs 3D Glasses	

Lava™ Chairside Oral Scanner C.O.S. Accessories



Disposable Wand Sheath

Sprayer

Sprayer Tips

Powder for Lava- Chairside Oral Scanner C.O.S.

Product Information

Item Number

Product Information	Item Number
Lava Chairside Oral Scanner C.O.S. Accessories	
Disposable Wand Sheath, 100/Pack	68903
Powder Sprayer	68904
1 – Sprayer	
6 – Sprayer Tips	
1 – Battery	
1 – Screwdriver	
2 – Brushes	
Sprayer Tip, 3/Bag	68912
Powder, 3.75g Bottle	68960

Paradigm™ MZ100 Block for CEREC® System

3M ESPE offers a full line of materials to support dentists using chairside CAD/CAM technology. Our philosophy is to make our milling materials, cements and finishing products versatile and easy to use so it's quick and simple to prepare for all of your procedures.

Indications

- Inlays.
- Onlays.
- Crowns.
- Veneers.

Product Benefits

- Created from Z100™ Restorative Material from 3M ESPE.
- High flexural strength and fracture toughness.
- Enamel-like wear characteristics are superior to that of ceramic blocks.
- Easy to finish and polish.
- Can be easily characterized with light-cured composite stains and glazes.
- An ideal material for CAD/CAM where strength and occlusal wear properties are needed.
- Easy to repair intraorally.



Product Information

Item Number

Paradigm MZ100 Block for CEREC System Refills

Shade A1, Size 10	2710A-S
Shade A2, Size 10	2710A2-S
Shade A3, Size 10	2710A3-S
Shade A3.5, Size 10	2710A3.5-S
Shade B3, Size 10	2710B3-S
Enamel, Size 10	2710E-S
Shade A1, Size 14	2714A1-S
Shade A2, Size 14	2714A2-S
Shade A3, Size 14	2714A3-S
Shade A3.5, Size 14	2714A3.5-S
Shade B3, Size 14	2714B3-S
Enamel, Size 14	2714AE-S

Each refill includes five blocks.

Paradigm™ MZ100 Blocks for E4D® System

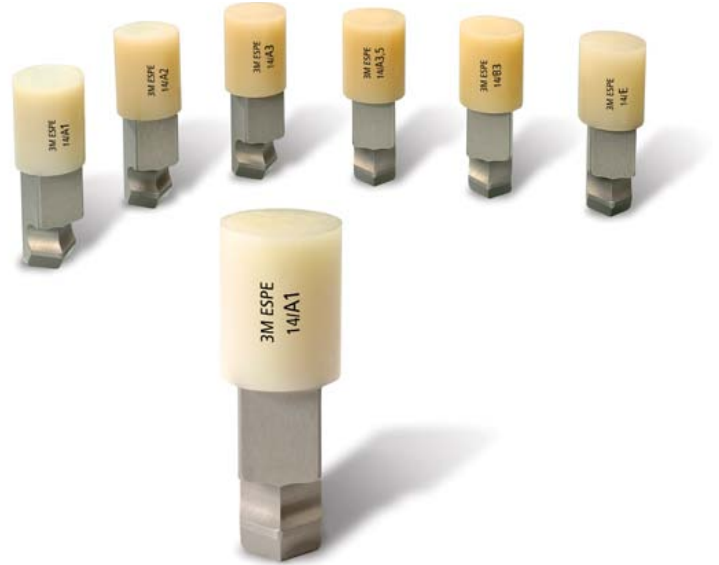
3M ESPE offers a full line of materials to support dentists using chairside CAD/CAM technology. Our philosophy is to make our milling materials, cements and finishing products versatile and easy to use so it's quick and simple to prepare for all of your procedures.

Indications

- Inlays.
- Onlays.
- Crowns.
- Veneers.

Product Benefits

- Created from Z100™ Restorative Material from 3M ESPE.
- High flexural strength and fracture toughness.
- Enamel-like wear characteristics are superior to that of ceramic blocks.
- Easy to finish and polish.
- Can be easily characterized with light-cured composite stains and glazes.
- An ideal material for CAD/CAM where strength and occlusal wear properties are needed.
- Easy to repair intraorally.



Product Information

Item Number

Paradigm MZ100 Blocks for E4D System Refills

Shade A1, Size 10	3710A1
Shade A2, Size 10	3710A2
Shade A3, Size 10	3710A3
Shade A3.5, Size 10	3710A3.5
Shade B3, Size 10	3710B3
Shade Enamel, Size 10	3710E
Shade A1, Size 14	3714A1
Shade A2, Size 14	3714A2
Shade A3, Size 14	3714A3
Shade A3.5, Size 14	3714A3.5
Shade B3, Size 14	3714AB3
Shade Enamel, Size 14	3714AE

Each refill includes five blocks.

Lava™ Zirconia Blocks

The number one brand requested by dentists, Lava™ Zirconia offers precise fit, proven strength and outstanding esthetics.

Indications

- Monolithic full-contour crowns.
- Single crowns.
- Splinted crowns.
- 3-unit bridges.
- 4-unit bridges.
- 5- and 6-unit bridges.
- Curved and long-span bridges.
- Cantilever bridges.
- Inlay and onlay bridges.
- Anterior adhesive bridges.
- Primary crowns/Telescopes and Implant abutments.

Product Benefits

- 10 years clinical experience.
- 100 clinical studies.
- 15 year warranty.
- Superior strength (1440 MPa, 3-point bend strength).
- Patented substructure system available in 8 shades.
- Natural translucency and unmatched esthetics.
- Excellent marginal fit.
- Conventional cementation.

Available from Jensen Dental at 800-243-2000 or visit them online at www.jensendental.com



Product Information

Item Number

Product Information	Item Number
Lava Zirconia Blocks	
20mm (12 Frames/Box)	68583
40mm (12 Frames/Box)	68581
60mm (12 Frames/Box)	68582
Multi (6 Frames/Box)	68591
20 XL (6 Frames/Box)	68593
Multi XL (6 Frames/Box)	68592



Lava™ Frame Wax Block

Applications: For use with Lava™ Milling Machines, this 60 mm wax block is used to create wax patterns for metal restorations.

Product Benefits

- True wax—not a burnable plastic plexiglass or polycarbonate.
- Offers similar handling as common dental waxes.
- Allows dental labs to wax-up and rework the pattern very easily.
Melting point of 302°F is higher than dental lab wax (120°F - 210°F).
- Offers same fit and accuracy as Lava™ Zirconia.

Available from Jensen Dental at 800-243-2000 or visit them online at www.jensendental.com



Product Information

Item Number

Lava Frame Wax Block 60mm (12 Blocks/Box)	68588
---	-------

Lava™ DVS Digital Veneering System Blocks

The Lava™ DVS Digital Veneering System for full-contour digital crowns gives dental labs a standardized, controlled CAD/CAM veneering process that utilizes unique crown materials to deliver strength, esthetics and productivity.

Indications

- For posterior and anterior crowns.

Product Benefits

- Controlled CAD/CAM process and a strong zirconia core ensure Lava™ DVS restorations are consistently strong and beautiful every time.
- Can prescribe a conservative prep.
- Conventional cementation.
- Precision fit.
- Outstanding esthetics.
- Digital precision minimizes manual adjustments.

Available from Jensen Dental at 800-243-2000 or visit them online at www.jensendental.com



Product Information

Item Number

Lava DVS Digital Veneering System Blocks	
20 S-E1	68425
20 S-E2	68426
20 S-E3	68427
20 S-E4	68428
20 M-E1	68429
20 M-E2	68430
20 M-E3	68431
20 M-E4	68432

Each box includes six blocks.

3M™ Essential Zirconia

With 3M™ Essential Zirconia, you can rest assured that you sourced your materials from a trusted industry leader. Check out how this new, cost-effective zirconia stacks up.

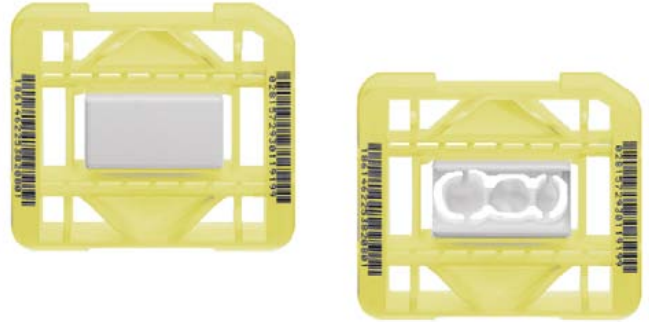
Indications

- For posterior and anterior use.

Product Benefits

- All-ceramic and metal-free.
- Remarkable strength (greater than 900 mpa and strong enough for clinical situations with a small occlusal reduction of 1.2 mm).
- Indicated for both anterior and posterior restorations.
- Excellent marginal fit.
- Now available through your Dental Wings or 3Shape scanners.
- 5 year warranty.

Available from Jensen Dental at 800-243-2000 or visit them online at www.jensendental.com



Product Information

Item Number

3M Essential Zirconia	
40mm (12 Blocks/Box)	68782

Lava™ Frame Shading Liquid

Lava™ Frame Shading Liquids ensure Lava frameworks are enhanced for a natural and vital appearance.

Product Benefits

- Patented substructure system available in 8 shades: Unshaded, FS1, FS2, FS3, FS4, FS5, FS6 and FS7.

Available from Jensen Dental at 800-243-2000 or visit them online at www.jensendental.com



Product Information

Item Number

Lava Frame Shading Liquid	
FS1 – 300ml	68574
FS2 – 300ml	68575
FS3 – 300ml	68576
FS4 – 300ml	68577
FS5 – 300ml	68578
FS6 – 300ml	68579
FS7 – 300ml	68580

Lava™ Milling Burs

Milling bur tools for forming SD shapes in Lava™ Milling Machines.

Available from Jensen Dental at 800-243-2000 or visit them online at www.jensendental.com



Product Information

Item Number

Lava Milling Burs

Type 1, Long Shaft for XL	.68621
Type 2, Long Shaft for XL	.68622
Type 3, Long Shaft for XL	.68623
Type 4, 5 Pieces/Box	.68612
Type 5, 5 Pieces/Box	.68613
Type 6, 5 Pieces/Box	.68614
Type 7, 1 Piece/Box (Bar Code Eraser)	.68615
Type 8, 1 Piece/Box (CNC500 Calibration)	.68617
Type 10, 1 Piece/Box (Lava Form Calibration)	.68616
Type 14, 5 Burs/Pouch (for Lava DVS)	.68618
Type 15, 5 Burs/Pouch (for Lava DVS)	.68619
Type 16, 5 Burs/Pouch (for Lava DVS)	.68620

Lava™ Digital Veneering System

Lava™ Digital Veneering System or Lava DVS is a CAD/CAM-produced porcelain for Lava™ Zirconia Crowns.



Product Information	Item Number
---------------------	-------------

Lava Digital Veneering System Intro Kit	68443
10 – 15g Lava DVS Fusion Porcelain: each of Shades D1, D2, D3, D4, D5, D6, D7, D8, D9 and D10	
4 – 15g Lava DVS Corrective Porcelain: each of Shades CR1, CR2, CR3 and CR4	
4 – 5g Lava DVS: each of Shades A, B, C and D	
6 – 5g Lava DVS Stains: each of Shades S1, S2, S3, S4, S5 and S6	
1 – 40ml Lava DVS Modeling Liquid	
1 – 5g Lava DVS Glaze	
1 – 40ml Lava DVS Shade/Stain/Glaze Liquid	
Lava DVS CD-ROM; Step-by-Step Card;	
Lava DVS Dosing Aid; Shade Guide;	
IFU (includes Firing Table and Conversion Table to Vita® Classic)	
Lava Digital Veneering System Trial Kit	68473
3 – 15g Lava DVS Fusion Porcelain: each of Shades D1, D3 and D6	
2 – 15g Lava DVS Corrective Porcelain: each of Shades CR1 and CR2	
1 – 40ml Lava DVS Modeling Liquid	
1 – 5g Lava DVS Glaze	
1 – 40ml Lava DVS Shade/Stain/Glaze Liquid	
Lava DVS CD-ROM; Step-by-Step Card; Lava DVS Dosing Aid;	
IFU (includes Firing Table and Conversion Table to Vita Classic)	

Available from Jensen Dental at 800-243-2000 or visit them online at www.jensendental.com

Product Information	Item Number
---------------------	-------------

Lava Digital Veneering System Refills	
1 – 15g Lava DVS Fusion Porcelain Powder Shade D1	68433
1 – 15g Lava DVS Fusion Porcelain Powder Shade D2	68434
1 – 15g Lava DVS Fusion Porcelain Powder Shade D3	68435
1 – 15g Lava DVS Fusion Porcelain Powder Shade D4	68436
1 – 15g Lava DVS Fusion Porcelain Powder Shade D5	68437
1 – 15g Lava DVS Fusion Porcelain Powder Shade D6	68438
1 – 15g Lava DVS Fusion Porcelain Powder Shade D7	68439
1 – 15g Lava DVS Fusion Porcelain Powder Shade D8	68440
1 – 15g Lava DVS Fusion Porcelain Powder Shade D9	68441
1 – 15g Lava DVS Fusion Porcelain Powder Shade D10	68442
1 – 15g Lava DVS Corrective Porcelain Powder Shade CR1	68457
1 – 15g Lava DVS Corrective Porcelain Powder Shade CR2	68458
1 – 15g Lava DVS Corrective Porcelain Powder Shade CR3	68471
1 – 15g Lava DVS Corrective Porcelain Powder Shade CR4	68472
1 – 5g Lava DVS Shade A	68465
1 – 5g Lava DVS Shade B	68466
1 – 5g Lava DVS Shade C	68467
1 – 5g Lava DVS Shade D	68468
1 – 5g Lava DVS Stain White	68459
1 – 5g Lava DVS Stain Lemon Yellow	68460
1 – 5g Lava DVS Stain Orange	68461
1 – 5g Lava DVS Stain Purple	68462
1 – 5g Lava DVS Stain Blue	68463
1 – 5g Lava DVS Stain Dark Brown	68464
1 – 40ml Lava DVS Modeling Liquid	68455
1 – 5g Lava DVS Glaze	68469
1 – 40ml Lava DVS Shade/Stain/Glaze Liquid	68470
1 – Lava DVS Shade Guide	68444
1 – 3kg Rocatec™ Soft for use with Lava DVS	68377

Lava™ CNC 500 Milling Machine

Run for 76 hours straight with multiple materials. Lava™ CNC 500 Milling Machine delivers 3 or 5 axis “smart” milling.

Lava CNC 500 Milling Machine

Contact Jensen Dental at 800-243-2000 or visit them online at www.jensendental.com

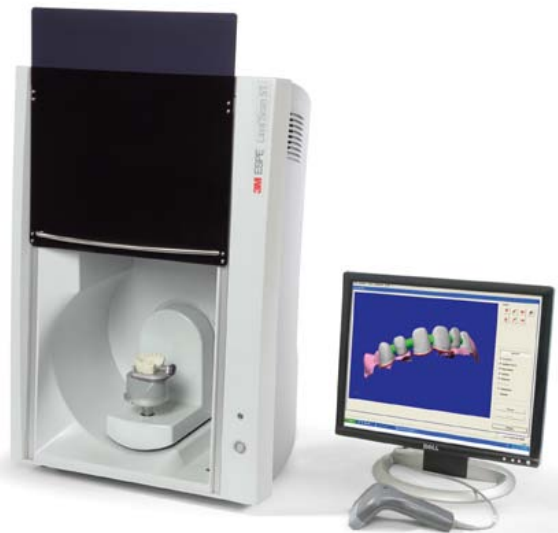


Lava™ Scan ST Design System

Precise, high-quality scanner allows you to design simple or complex restorations with zirconia, or use selectively open architecture for multiple materials.

Lava Scan ST Design System

Contact Jensen Dental at 800-243-2000 or visit them online at www.jensendental.com



Lava™ Furnace 200

Increase the output of your lab with the 3M™ ESPE™ Lava™ Furnace 200 by reducing sinterings and producing more units per sintering cycle. 3M ESPE worked with DEKEMA® to customize the Austromat® µSiC® high-temperature furnace for Lava™ Zirconia as well as other materials. This furnace features software for telediagnosis, so that it may be serviced remotely.

Product Benefits

- Shorter sintering cycles.
- Increased productivity.
- Consume less energy.
- Use custom sintering programs for Lava zirconia.

Lava Furnace 200

Contact Jensen Dental at 800-243-2000 or visit them online at www.jensendental.com



Rocatec™ Junior Bonding System

An abrasive blasting system that provides micromechanical and chemical adhesion and outstanding bond strengths for indirect procedures. This reliable, mobile system is compact, economical and able to be used wherever compressed air is available.

Indications

- Coating indirect restorations to achieve a micromechanical and chemical bond. Ideal for ceramics, composites and zirconia.

Product Benefits

- Provides outstanding bond strengths without marginal gap.
- Compact and economical unit is mobile and can be used wherever compressed air is available.
- Does not require a power supply.
- Easy-to-view pressure gauge allows you to monitor and regulate the unit's performance.
- Pressure-reduction valve with integral water collector supplies compressed air free of water or oil to ensure reliable operation.
- Intended for use with the Rocatec Bonding System, including Rocatec Pre Bonding Material, Rocatec Plus Bonding Material and Rocatec Soft Bonding Material.



Product Information

Item Number

Rocatec Junior Bonding System Intro Kit	77031
1 – Rocatec Junior Blasting Module	
3 – 3000g Rocatec Plus Bonding Material	
1 – 8ml Bottle Sil Silane Primer	
Rocatec Junior Bonding System Refills	
3 – 3000g Rocatec Soft.	68340
3 – 3000g Rocatec Plus	68350
3 – 3000g Rocatec Pre	68360
1 – 8ml Bottle Sil Silane Primer.	68300

Visio™ Alfa Light Unit

A curing light unit designed for pre- and intermediate polymerization of light-cured composites, such as Sinfony™ Indirect Lab Composite.

Indications

- Pre- and intermediate polymerization of light-cured composite materials.
- Suitable for all light-cured composites, such as Sinfony indirect lab composite and Visio™-Form Light-Cured Modeling Resin.

Product Benefits

- Allows for direct and functional layering of light-cured composite material.
- Built-in proximity sensor automatically controls the light source once the object is positioned at the correct distance from the lamp.



Product Information

Item Number

Visio Alfa Light Unit	77121
Visio Alfa Replacement Light	77160

Visio™ Beta Vario Light Unit

A curing light unit for final vacuum polymerization of light-cured composite materials, the unit has a mirrored polymerization chamber that guarantees complete illumination for deep and thorough polymerization.

Indications

- Final vacuum polymerization of light-cured composite materials.
- Final vacuum polymerization of light-cured tray materials.

Product Benefits

- Ideal for polymerization of veneers made from Sinfony indirect lab composite to guarantee veneer strength and color stability.
- Mirrored polymerization chamber provides complete illumination for deep and thorough polymerization.
- Vacuum technique removes oxygen-inhibited layers for improved surface hardness.
- Includes three additional programs for versatile use, e.g., for curing MultiTray Light-Cured Maxillary and Mandibular Baseplates.



Product Information

Item Number

Visio Beta Vario Light Unit	77141
Visio Beta Pump	77105
Visio Beta Vario Replacement Light	77170
Visio Beta Pump Oil	77150

Visio™ -Form Light-Cured Modeling Resin

A light-cured modeling resin that offers highly precise impressions and is designed to meet the requirements of today's casting techniques.

Indications

- Casting inlay and onlay patterns.
- Modeling conical crowns, telescopic crowns and variations of these crowns.
- Modeling cast extensions without a duplicate model.
- Adhesive bridges and soldering models for blocking.

Product Benefits

- High impression precision.
- Ensures homogeneous cast objects.
- Offers high mechanical strength and low polymerization shrinkage.
- Easy to lift away from the primary structures due to internal isolations.
- Burns out cleanly.



Product Information

Item Number

Visio-Form Light-Cured Modeling Resin Refill

2 – 4g Resin Dispensers78420

Sinfony™ Indirect Lab Composite

A micro-hybrid, indirect laboratory composite that combines strength, beauty and versatility. Developed for laboratories and designed to build like porcelain, the composite is excellent for inlays/onlays, veneers and full crowns.

Indications

- Full indirect composite of crowns and bridges.
- Full crowns.
- Inlays/onlays.
- Glass-fiber reinforced crowns and bridges.
- Direct-bonded bridges.
- Telescopic and conical crowns.
- Attachments and implant work.
- Veneers.
- Long-term temporary work and its characterization.
- Customization of dentures and their teeth made of acrylic and ceramics.
- Extraoral repairs.

Product Benefits

- Excellent esthetics/translucency.
- Long-term proven wear resistance.
- Ease of finishing and polishing.
- Plaque and stain resistance.
- Proven in tests to be as strong or stronger than other popular brands and to possess inherent advantages in flexibility, impact strength and color stability.
- Handles like porcelain.
- Indirect restorations created from Sinfony indirect lab composite offer natural vitality, amber opalescent effect and fluorescence.



Product Information

Item Number

Sinfony Indirect Lab Composite Master System	49962
16 – 5g Dispensers Dentin Material	
4 – 5g Dispensers Enamel Material	
2 – 5g Dispensers Enamel Effect Material	
4 – 5g Dispensers Transparent Opal Material	
9 – 5g Dispensers Magic Shades	
5 – 5g Dispensers Opaque Dentin Material	
16 – 5g Dispensers Opaquer Powders	
5 – 5g Dispensers Intensive Opaquer Powders	
2 – 8ml Opaquer Liquid	
1 each – 10ml Model Isolation;	
5ml Activation Liquid Finishing Set;	
Polishing Paste; Handling Accessories	
Visio Alfa Light Curing Unit	
Visio Beta Vario Light Curing Unit	
Visio Beta Pump and Oil	
Sinfony Indirect Lab Composite Master Kit	49000
16 – 5g Dispensers Dentin Material	
4 – 5g Dispensers Enamel Material	
2 – 5g Dispensers Enamel Effect Material	
4 – 5g Dispensers Transparent Opal Material	
9 – 5g Dispensers Intensive Opaquer Powders	
2 – 8ml Opaquer Liquid	
1 – 10ml Model Isolation	
1 – 5ml Activation Liquid Finishing Set	
Handling Accessories	
Sinfony Indirect Lab Composite Accessory	
Dispenser Handpiece	49910

Product Information	Item Number
Sinfony Indirect Lab Composite Refills Shade	
Dentin, 5g each	
D A0 (Bleach Shade)	49099
D A1	49100
D A2	49110
D A3	49120
D A3.5	49130
D A4	49140
D B0 (Bleach Shade)	49150
D B1	49160
D B2	49170
D B3	49180
D B4	49190
D C1	49210
D C2	49220
D C3	49230
D C4	49240
D D2	49260
D D3	49270
D D4	49280
Enamel Shade Refills, 5g each	
E 1	49300
E 2	49310
E 3	49320
E 4	49330
E 5 Polar	49340
E 6 Sun	49350
Transparent Opal Shade Refills, 5g each	
T1 Neutral	49360
T2 Yellow	49370
T3 Blue	49380
T4 Grey	49390
Magic Shade Refills, 5g each	
I1 Ocean Blue	49410
I2 Atlantis	49420
I3 Chestnut	49430
I4 Havana	49440
I5 Orange	49450
I6 Khaki	49460
I7 Vanilla	49470
I8 Honey Yellow	49480
I9 Gingiva	49490
I10 Red	49491
I11 Terra Cotta	49492

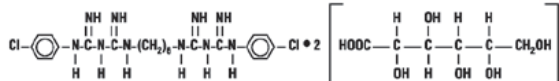
Product Information	Item Number
Shade	
Opaque Dentin Shade Refills, 5g each	
DO1 Yellow Brown	49500
DO2 Brown	49520
DO3 Red Brown	49530
DO4 Light Green	49540
DO5 Green Grey	49550
Opaque Powder Refills, 5g each	
OA0	49599
OA1	49600
OA2	49610
OA3	49620
OA3.5	49630
OA4	49640
OB0	49650
OB1	49660
OB2	49670
OB3	49680
OB4	49690
OC1	49710
OC2	49720
OC3	49730
OC4	49740
OD2	49760
OD3	49770
OD4	49780
Intensive Opaquer Refills, 5g each	
IO1 Pink	49810
IO2 Orange	49820
IO3 Brown	49830
IO4 Purple/Grey	49840
IO5 Ochre	49850
Liquids	
8ml Opaquer	49860
10ml Model Isolation	47180
5ml Activation	49870

Peridex™ Chlorhexidine Gluconate 0.12% Oral Rinse

INDICATION: Peridex oral rinse is indicated for use between dental visits as part of a professional program for the treatment of gingivitis as characterized by redness and swelling of the gingivae, including gingival bleeding upon probing. Peridex oral rinse has not been tested among patients with acute necrotizing ulcerative gingivitis (ANUG). For patients having coexisting gingivitis and periodontitis, see PRECAUTIONS.

DESCRIPTION: Peridex™ Chlorhexidine Gluconate 0.12% is an oral rinse containing 0.12% chlorhexidine gluconate (1, 11-hexamethylene bis [5-(p-chlorophenyl) biguanide] di-D-gluconate) in a base containing water, 11.6% alcohol, glycerin, PEG-40 sorbitan disostearate, flavor, sodium saccharin, and FD&C Blue No. 1. Peridex oral rinse is a near-neutral solution (pH range 5-7). Chlorhexidine gluconate is a salt of chlorhexidine and gluconic acid. Its chemical structure is:

CLINICAL PHARMACOLOGY: Peridex™ Chlorhexidine Gluconate 0.12% Oral Rinse provides antimicrobial activity during oral rinsing. The clinical significance of Peridex oral rinse's antimicrobial activities is not clear. Microbiological sampling of plaque has shown a general reduction of counts of certain assayed bacteria, both aerobic and anaerobic, ranging from 54-97% through six months use. Use of Peridex oral rinse in a six month clinical study did not result in any significant changes in bacteria resistance, overgrowth of potentially opportunistic organisms or other adverse changes in the oral microbial ecosystem. Three months after Peridex oral rinse use was discontinued, the number of bacteria in plaque had returned to baseline levels and resistance of plaque bacteria to chlorhexidine gluconate was equal to that at baseline.



PHARMACOKINETICS: Pharmacokinetic studies with Peridex oral rinse indicate approximately 30% of the active ingredient, chlorhexidine gluconate, is retained in the oral cavity following rinsing. This retained drug is slowly released into the oral fluids. Studies conducted on human subjects and animals demonstrate chlorhexidine gluconate is poorly absorbed from the gastrointestinal tract. The mean plasma level of chlorhexidine gluconate reached a peak of 0.206 µg/g in humans 30 minutes after they ingested a 300mg dose of the drug. Detectable levels of chlorhexidine gluconate were not present in the plasma of these subjects 12 hours after the compound was administered. Excretion of chlorhexidine gluconate occurred primarily through the feces (~90%). Less than 1% of the chlorhexidine gluconate ingested by these subjects was excreted in the urine.

CONTRAINDICATIONS: Peridex oral rinse should not be used by persons who are known to be hypersensitive to chlorhexidine gluconate or other formula ingredients.

WARNINGS: The effect of Peridex oral rinse on periodontitis has not been determined. An increase in supragingival calculus was noted in clinical testing in Peridex oral rinse users compared with control users. It is not known if Peridex oral rinse use results in an increase in subgingival calculus. Calculus deposits should be removed by a dental prophylaxis at intervals not greater than six months. Hypersensitivity and generalized allergic reactions have occurred. SEE CONTRAINDICATIONS.

PRECAUTIONS:

GENERAL:

1. For patients having coexisting gingivitis and periodontitis, the presence or absence of gingival inflammation following treatment with Peridex oral rinse should not be used as a major indicator of underlying periodontitis.
2. Peridex oral rinse can cause staining of oral surfaces, such as tooth surfaces, restorations, and the dorsum of the tongue. Not all patients will experience a visually significant increase in toothstaining. In clinical testing, 56% of Peridex oral rinse users exhibited a measurable increase in facial anterior stain, compared to 35% of control users after six months; 15% of Peridex oral rinse users developed what was judged to be heavy stain, compared to 1% of control users after six months. Stain will be more pronounced in patients who have heavier accumulations of unremoved plaque. Stain resulting from use of Peridex oral rinse does not adversely affect health of the gingivae or other oral tissues. Stain can be removed from most tooth surfaces by conventional professional prophylactic techniques. Additional time may be required to complete the prophylaxis. Discretion should be used when prescribing to patients with anterior facial restorations with rough surfaces or margins. If natural stain cannot be removed from these surfaces by a dental prophylaxis, patients should be excluded from Peridex oral rinse treatment if permanent discoloration is unacceptable. Stain in these areas may be difficult to remove by dental prophylaxis and on rare occasions may necessitate replacement of these restorations.
3. Some patients may experience an alteration in taste perception while undergoing treatment with Peridex oral rinse. Rare instances of permanent taste alteration following Peridex oral rinse use have been reported via post-marketing product surveillance.

PREGNANCY: TERATOGENIC EFFECTS Pregnancy Category B. Reproduction studies have been performed in rats and rabbits at chlorhexidine gluconate doses up to 300mg/kg/day and 40mg/kg/day, respectively, and have not revealed evidence of harm to fetus. However, adequate and well-controlled studies in pregnant women have not been done. Because animal reproduction studies are not always predictive of human response, this drug should be used during pregnancy only if clearly needed.

NURSING MOTHERS: It is not known whether this drug is excreted in human milk. Because many drugs are excreted in human milk, caution should be exercised when Peridex oral rinse is administered to nursing women. In parturition and lactation studies with rats, no evidence of impaired

parturition or of toxic effects to suckling pups was observed when chlorhexidine gluconate was administered to dams at doses that were over 100 times greater than that which would result from a person's ingesting 30ml (2 capfuls) of Peridex oral rinse per day.

PEDIATRIC USE: Clinical effectiveness and safety of Peridex™ Chlorhexidine Gluconate 0.12% Oral Rinse have not been established in children under the age of 18.

CARCINOGENESIS, MUTAGENESIS, AND IMPAIRMENT OF FERTILITY: In a drinking water study in rats, carcinogenic effects were not observed at doses up to 38mg/kg/day. Mutagenic effects were not observed in two mammalian *in vivo* mutagenesis studies with chlorhexidine gluconate. The highest doses of chlorhexidine used in a mouse dominant-lethal assay and a hamster cytogenetics test were 1000mg/kg/day and 250mg/kg/day, respectively. No evidence of impaired fertility was observed in rats at doses up to 100mg/kg/day.

ADVERSE REACTIONS: The most common side effects associated with chlorhexidine gluconate oral rinses are: 1) an increase in staining of teeth and other oral surfaces; 2) an increase in calculus formation; and 3) an alteration in taste perception, see WARNINGS and PRECAUTIONS. Oral irritation and local allergy-type symptoms have been spontaneously reported as side effects associated with use of chlorhexidine gluconate rinse. The following oral mucosal side effects were reported during placebo-controlled adult clinical trials: aphthous ulcer, grossly obvious gingivitis, trauma, ulceration, erythema, desquamation, coated tongue, keratinization, geographic tongue, mucocoele, and short frenum. Each occurred at a frequency of less than 1.0%. Among post marketing reports, the most frequently reported oral mucosal symptoms associated with Peridex oral rinse are stomatitis, gingivitis, glossitis, ulcer, dry mouth, hypesthesia, glossal edema, and paresthesia. Minor irritation and superficial desquamation of the oral mucosa have been noted in patients using Peridex oral rinse. There have been cases of parotid gland swelling and inflammation of the salivary glands (sialadenitis) reported in patients using Peridex oral rinse.

OVERDOSAGE: Ingestion of 1 or 2 ounces of Peridex oral rinse by a small child (~10 kg body weight) might result in gastric distress, including nausea, or signs of alcohol intoxication. Medical attention should be sought if more than 4 ounces of Peridex oral rinse is ingested by a small child or if signs of alcohol intoxication develop.

DOSE AND ADMINISTRATION: Peridex oral rinse therapy should be initiated directly following a dental prophylaxis. Patients using Peridex oral rinse should be reevaluated and given a thorough prophylaxis at intervals no longer than six months. Recommended use is twice daily oral rinsing for 30 seconds, morning and evening after toothbrushing. Usual dosage is 15ml (marked in cap) of undiluted Peridex oral rinse. Patients should be instructed to not rinse with water or other mouthwashes, brush teeth or eat immediately after using Peridex oral rinse. Peridex oral rinse is not intended for ingestion and should be expectorated after rinsing.

HOW SUPPLIED: Peridex oral rinse is supplied as a blue liquid in:

- 4fl oz (118ml) (NDC 48878-0620-3) amber plastic bottles with child resistant dispensing closures
- 16fl oz (473ml) (NDC 448878-0620-1) amber plastic bottles with child resistant dispensing closures
- 64fl oz (1893ml) (NDC 48878-0620-2) plastic bottle with pump dispensing closure

DIRECTIONS FOR USE: Fill cap to the "fill line" (15ml). Swish in mouth undiluted for 30 seconds, then spit out. Use after breakfast and before bedtime. Or, use as prescribed. NOTE: To minimize medicinal taste, do not rinse with water immediately after use.

WHAT TO EXPECT WHEN USING PERIDEX™ ORAL RINSE:

Your dentist has prescribed Peridex™ Chlorhexidine Gluconate 0.12% Oral Rinse to treat your gingivitis, to help reduce the redness and swelling of your gums, and also to help you control any gum bleeding. Use Peridex oral rinse regularly, as directed by your dentist, in addition to daily brushing. Spit out after use. Peridex oral rinse should not be swallowed.

- Peridex oral rinse may cause some tooth discoloration or increase in tartar (calculus) formation, particularly in areas where stain and tartar usually form. It is important to see your dentist for removal of any stain or tartar at least every six months or more frequently if your dentist advises.
- Both stain and tartar can be removed by your dentist or hygienist. Peridex oral rinse may cause permanent discoloration of some front-tooth fillings.
 - To minimize discoloration, you should brush and floss daily, emphasizing areas which begin to discolor.
 - Local hypersensitivity and sometimes generalized allergic reactions have also been reported. Peridex oral rinse should not be used by persons who have a sensitivity to it or its components.
 - Peridex oral rinse may taste bitter to some patients and can affect how foods and beverages taste. This will become less noticeable in most cases with continued use of Peridex oral rinse.
 - To avoid taste interference, rinse with Peridex oral rinse after meals. Do not rinse with water or other mouthwashes immediately after rinsing with Peridex oral rinse.

If you have any questions or comments about Peridex oral rinse, contact your dentist or pharmacist. Call your doctor for medical advice about side effects. You may report side effects to FDA at 1-800-FDA-1088 or 3M.

STORE ABOVE FREEZING (32°F or 0°C).

Rx only

KEEP OUT OF REACH OF CHILDREN

Manufactured in USA for:
3M ESPE Dental Products
St. Paul, MN 55144

Revised: June 2009

- A**
- Accessories for Impression Materials 69-72
 - Accessories for Glass Ionomers 25
 - Accessories for Restoratives 35-37
 - Adhesives 2-9
 - Adper Easy Bond Self-Etch Adhesive 2
 - Adper Prompt Self-Etch Adhesive 4
 - Adper Scotchbond Multi-Purpose Adhesive 6
 - Adper Scotchbond Multi-Purpose Plus Adhesive 7
 - Adper Scotchbond SE Self-Etch Adhesive 3
 - Adper Single Bond Plus Adhesive 5
 - Aplicap/Maxicap Accessories 97
 - Attest Biological Monitoring System 50
 - Attest Biological Indicators 50
 - Avagard D Instant Hand Antiseptic with Moisturizers 49
- B**
- Biological Monitoring 50
 - Bite Registration 67
- C**
- Capsule Mixing Unit 96
 - Cartridge Dispenser and Accessories 71
 - CaviRinse 0.2% Sodium Fluoride Rinse 44
 - Cavit Temporary Filling Materials 35
 - CavityShield 5% Sodium Fluoride Varnish 39
 - Clinpro 5000 1.1% Sodium Fluoride Anti-Cavity Toothpaste 40
 - Cements 85-95
 - Clinpro Prophy Angles 45
 - Clinpro Prophy Paste 45
 - Clinpro Sealant 41
 - CoJet System 35
 - Compomers 18
 - Composites 10-19
 - Concise Composite 19
 - C & P Powder Air Polishing Powder 46
 - Crown Crimping Pliers 84
 - Crown Contouring Pliers 84
 - Crown Scissors 84
 - Crowns 76-84
 - Curing Light S10 (Elipar) 31
 - Curing Lights and Accessories 31
- D**
- Dimension VPS 63
 - Directed Flow Impression Tray 69
 - Durelon Carboxylate Luting Cement 93
- E**
- Ear Loop Face Masks 53
 - Elastomer Syringe Accessories 71
 - Elipar S10 Curing Light 31
 - Essential Zirconia 106
 - Etchants 9
 - Express VPS Accessories 72
 - Express Bite Registration 67
 - Express Putty/Wash VPS 65
- F**
- F2000 Compomer Restorative 18
 - Face Masks 52-53
 - Filtek LS Low Shrink Posterior Restorative System 16
 - Filtek P60 Posterior Restorative 17
 - Filtek Supreme Ultra Universal Restorative 10-11
 - Filtek Supreme Ultra Flowable Restorative 12
 - Filtek Z250 Universal Restorative 13
 - Finishing and Polishing 32-34
 - Floss N Toss Disposable Flossers 47
- G**
- Glass Ionomers 20-30
 - Glass Ionomer Accessories 25
 - Gold Anodized Crowns 77
- I**
- Impregum F (Handmix) Polyether 57
 - Impregum Penta Polyether 56
 - Impregum Soft Polyether 54-55
 - Impression Materials 54-72
 - Impression Equipment and Accessories 69-72
 - Imprint Bite 67
 - Imprint II VPS 62
 - Imprint 3 VPS 60-61
 - Infection Control 49-53
 - Intra-oral Syringe 71
 - Iso-Form Crowns 76
- J**
- Just For Kids 0.4% Stannous Fluoride Brush-On Gel 44
- K**
- Ketac Conditioner 25
 - Ketac Bond and Ketac Bond Aplicap 30
 - Ketac Cem Radiopaque 91
 - Ketac Cem Aplicap/Maxicap 92
 - Ketac Fil Plus Aplicap 23
 - Ketac Glaze 25
 - Ketac Molar Aplicap 21
 - Ketac Molar Quick Aplicap 22
 - Ketac Nano Light-Curing Glass Ionomer Restorative 20
 - Ketac Silver 24
- L**
- Lava Ceram Overlay Porcelain Sets 97
 - Lava Chairside Oral Scanner C.O.S. 100
 - Lava Chairside Oral Scanner C.O.S. Accessories 101
 - Lava CNC 500 Milling Machine 109
 - Lava Digital Veneering System 108
 - Lava DVS Digital Veneering System 105
 - Lava Form Milling Unit 95
 - Lava Frame Shading Liquid 106
 - Lava Frame Wax Block 105
 - Lava Furnace 200 110
 - Lava Laboratory Products 104-108
 - Lava Milling Burs 107

- Lava Precision Solutions 109-110
 Lava Scan ST Design System 109
 Lava Zirconia Blocks 104
 Lead Free Autoclave Steam Indicator Tape 51
- M**
- Masks, Face: 52-53
 Ear Loop 53
 Molded 52
 Tie-on 53
 Triple Layer Molded 52
- Maxicap Accessories 97
- MDI Mini Dental Implants 98
 MDI Basic Package 99
 MDI Practice-Building Kit 99
 MDI Surgical Kit 99
- Mixing Pads 25, 37, 72
 Mixing Spatulas 72
 Mixing Wells 37
 Molded Face Masks 52
 MZ100 (Paradigm) Block for CEREC System 102
- O**
- OMNI Gel 0.4% Stannous Fluoride Brush-On Gel 43
 OrthoWash Daily Rinse 44
- P**
- P60 (Filtek) Posterior Restorative 17
 Paradigm MZ100 Block for CEREC System 102
 Paradigm MZ100 Blocks for E4D System 103
 Paradigm Nano Hybrid Universal Restorative 15
 Paradigm VPS 64
 Penta Accessories 70
 Pentamix 3 Mixing Unit 70
 Peridex Chlorhexidine Gluconate 0.12% Oral Rinse 42
 PeriMed 0.63% Stannous Fluoride Oral Rinse Concentrate 43
 Permadyne Polyether 58
 Permadyne (Handmix) Polyether 59
 Permanent Stainless Steel Crowns 82
 Photac Fil Quick Aplicap 26
 Polycarbonate Crowns 78
 Polyether Impression Materials 54-59, 68
 Position Penta Quick VPS Alginate Replacement 66
 Preventive Products 38-48
 Primary Stainless Steel Crowns 79
 Prompt (Adper) Self-Etch Adhesive 4
 Prophyl (Clinpro) Angles 45
 Prophyl (Clinpro) Paste 45
 Protemp Crown Temporization Material 75
 Protemp II Temporization Material 74
 Protemp Plus Temporization Material 73
- R**
- Ramitec (Handmix) Polyether 68
 Ramitec Polyether 68
 RelyX ARC Adhesive Resin Cement 90
 RelyX Ceramic Primer 95
 RelyX Fiber Post 87
- RelyX Luting Plus Cement 88
 RelyX Luting Cement 88
 RelyX Temp E Temporary Cement 94
 RelyX Temp NE Temporary Cement 94
 RelyX Unicem Self-Adhesive Resin Cement 86
 RelyX Unicem 2 Self-Adhesive Resin Cement 85
 RelyX Veneer Cement 89
- Restoratives 20-30, 35-37
 Restorative Accessories 37
 Rocatec Junior Bonding System 111
 RotoMix Capsule Mixing Unit 96
- S**
- Scotchbond Dual Cure Adhesive 8
 Scotchbond Etchant 9
 Scotchbond (Adper) Multi-Purpose Adhesive 6
 Scotchbond (Adper) Multi-Purpose Plus Adhesive 7
 Singles Prophyl Paste with Fluoride 46
 Sinfony Indirect Lab Composite 114-115
 Sinfony Magic Shades 115
 Single Bond Plus (Adper) Adhesive 5
 Sof-Lex Discs 32-33
 Sof-Lex Finishing and Polishing System 32-33
 Sof-Lex Finishing Strips 34
 Stainless Steel Crowns 79-80, 82-83
 Strip Crown Forms 81
- T**
- Temporization Materials 73-75
 TheraMints 100% Xylitol Sweetened Mints 47
 Tie-On Face Masks 53
 Transparent Strip Crown Forms 81
 Triple Layer Molded Face Masks 52
- U**
- Unitek Permanent Stainless Steel Crowns 83
 Unitek Primary Stainless Steel Crowns 80
- V**
- Vanish 5% Sodium Fluoride 38
 Vanish XT Extended Contact Varnish 39
 Vinyl Polysiloxane (VPS) Impression Materials 60-66
 Visio Alfa Light Unit 112
 Visio Beta Vario Light Unit 112
 Visio Bond 36
 Visio-Form Light-Cured Modeling Resin 113
 Vitrebond Plus Glass Ionomer Liner/Base 28
 Vitrebond Glass Ionomer Liner/Base 29
 Vitremer Core Buildup/Restorative 27
- W**
- White & Brite Tooth Whitening System 48
- Z**
- Z100 Restorative 14
 Z250 (Filtek) Universal Restorative 13
 Zirconia 104, 106

Material Safety Data Sheets

Material Safety Data Sheets (MSDS) may be requested by calling 1-800-634-2249 or logging on to the Web at www.3MESPE.com.

Changes

Because products are continually undergoing refinement in design and manufacturing methods, 3M ESPE reserves the right to improve, modify or discontinue products at any time.

Warranty and Limited Remedy

3M ESPE warrants that products are free of defects in material and manufacture at the time of shipment to buyer. Individual products may have additional or different warranties as stated on product packaging, package inserts, literature, or in 3M ESPE price pages. 3M ESPE's sole obligation and the buyer's sole remedy in the event of any claimed defect shall be, at 3M ESPE's option, repair or replacement of the product, or refund of the purchase price. Written notice of claimed defect must be received by 3M ESPE within 30 days after discovery of the defect not to exceed one year from the date of delivery. Except where prohibited by law, 3M ESPE shall not be liable for any loss or damage arising from its products, whether direct, indirect, special, consequential, regardless of the theory asserted, including warranty, contract, negligence or strict liability.

3M ESPE neither assumes, nor authorizes any other person to assume on its behalf any additional liability or responsibility. Defects, misuse, neglect, accident or failure to follow recommended procedures or instructions for use or by modification by the buyer or user voids any 3M ESPE product warranty.

THIS WARRANTY IS MADE IN LIEU OF ALL OTHER WARRANTIES, EXPRESS OR IMPLIED, INCLUDING BUT NOT LIMITED TO, THE IMPLIED WARRANTY OF MERCHANTABILITY, THE IMPLIED WARRANTY OF FITNESS FOR A PARTICULAR PURPOSE, ANY IMPLIED WARRANTY ARISING OUT OF A COURSE OF DEALING OR OF PERFORMANCE, CUSTOM OR USAGE OF TRADE, EXCEPT OF TITLE AND AGAINST PATENT INFRINGEMENT.



Certified Channel Partners in the U.S. as of January 1, 2011

AM-Touch Dental
(800) 350-4568
Valencia, CA
www.amtouch.com

Arnold Dental Supply Co., Inc.
(800) 562-6645
Lynnwood, WA
www.arnold-dental.com

Atlanta Dental Supply Co.
(800) 241-3743
Duluth, GA
www.atlantadental.com

Benco Dental Supply Co.
(800) 462-3626
Wilkes-Barre, PA
www.benco.com

Burkhart Dental Supply Co., Inc.
(800) 828-8479
Tacoma, WA
www.burkhartdental.com

Carolina Dental Supply, Inc.
(336) 883-8100
High Point, NC
www.carolinadental.com

Cedar Dental Supply Co.
(856) 216-1990
Cherry Hill, NJ

Darby Dental Supply
(800) 625-2310
Jericho, NY
www.darbydental.com

Dental Health Products, Inc.
(800) 626-2163
New Franken, WI
www.dhpionline.com

Direct Dental Supply Co.
(800) 648-5628
Sparks, NV
www.directdentalsupply.com

Elbee Dental Supply
(800) 618-5399
New Hyde Park, NY

Endoco, Inc. (Ultimate Dental)
(800) 388-7868
Memphis, TN
www.endoco.com

Freud-Carson
(877) 402-5154
Flanders, NJ
www.carsondental.com

Goetze-Niemer, Co., Inc.
(800) 692-0804
Kansas City, MO
www.goetzedental.com

Henry Schein Dental
(800) 372-4346
Melville, NY
www.henryschein.com

Holt Dental Supply
(888) 458-7200
Waukesha, WI
www.holtdentalsupply.com

Iowa Dental Supply
(800) 362-2072
Grimes, IA
www.iowadentalsupply.com

Jahn Dental Supply
(800) 292-7464
San Antonio, TX

Johnson & Lund Co., Inc.
(585) 475-0160
Rochester, NY
www.johnsonandlunddental.com

Midway Dental Supply, Inc.
(800) 333-8625
Lakeville, IN
www.midwaydental.com

Midwest Dental
(800) 766-2025
Wichita Falls, TX
www.mwdental.com

Nashville Dental, Inc.
(800) 251-2196
Madison, TN
www.nashvilledental.com

Newark Dental Corporation
(973) 564-9400
Springfield, NJ
www.newarkdentalpemco.com

Northeast Dental & Medical Supplies
(800) 724-0720
Rochester, NY
www.nedental.com

Nowak Dental Supplies, Inc.
(800) 654-7623
Carriere, MS
www.nowakdental.com

OC-1
(800) 926-1870
Corona, CA
www.oc-1dental.com

Parkway Dental Services
(800) 257-0400
Pennsauken, NJ
www.parkwaydental.com

Patterson Dental
(800) 328-5536
St. Paul, MN
www.pattersondental.com

Pearson Dental Supply
(800) 535-4535
Sylmar, CA
www.pearsondental.com

Safco Dental Supply, Inc.
(800) 621-2178
Buffalo Grove, IL
www.safcodental.com

SmartPractice
(800) 522-0800
Phoenix, AZ
www.smartpractice.com

Tri-State Dental Supplies & Equipment
(800) 378-7754
Cranford, NJ
www.tristatedental.com

Valley Dental Supply Co.
(800) 482-5539
Burbank, CA
www.valleydentalsupply.com

Williams Dental Supply Co.
(800) 922-8449
Worcester, MA
www.williamsdentalsupply.com

A listing of U.S. certified 3M ESPE Channel Partners is also available at:
www.3MESPE.com/authorizeddealers

3M, ESPE, Adper, Aplicap, Attest, Avagard, C & P Powder, CaviRinse, Cavit, CavityShield, Clicker, Clinpro, CoJet, Concise, Dimension, Durelon, Elipar, Espertise, Express, Filtek, Floss N Toss, Impregum, Imprint, Iso-Form, Just For Kids, Ketac, Lava, Maxicap, OMNI Gel, OrthoWash, Paradigm, Penta, Pentamix, Peridex, PerioMed, Permadyne, Photac, Position, Prompt, Protemp, Ramitec, RelyX, Rocatec, RotoMix, Scotchbond, Sinfony, Singles, Sof-Lex, TheraMints, Unitek, Vanish, Visio, Vitrebond, Vitremer, White & Brite and Z100 are trademarks of 3M or 3M ESPE AG.

3M ESPE

Dental Products

3M Center
Building 275-2SE-03
St. Paul, MN 55114-1000
U.S.A.
1-800-634-2249
www.3MESPE.com

3M Canada

Post Office Box 5757
London, Ontario N6A 4T1
Canada
1-888-363-3685

Please recycle. Printed in U.S.A.
© 3M 2011. All rights reserved.
Used under license in Canada.
70-2009-3725-1