



Fully Auto Washing Machine Manual



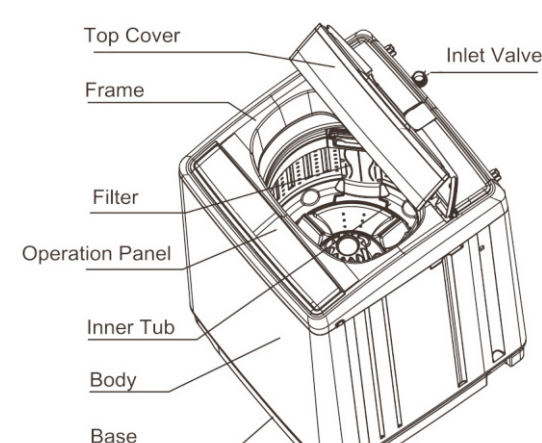
Thanks for your purchase. Any questions please don't hesitate to contact us. We will handle all your problem ASAP. Your feedback is vital to us! And we will always try to do better. For more details, please contact us by email via support@rovsun.com. (Write your seller's Order # on the subject of the email, so that we can find your order and better assist your issue) Or call us at (1855-882-2333).

Made in China

CONTENTS

Before Using The Machine	Page
Name of Parts	1
Important Safety precaution	2-3
Installation And Adjustment	4
Usage of Drain Hose	5
Installation of Inlet Hose	6-7
In Operation	
Preparation Before Washing	8
Washing Procedure	9-10
Maintenance	11
Troubleshooting	12
Packing Instruction	13

NAME OF PARTS



Note: All the drawing in the manual is schematic diagram. Due to the product improvement, the product you get and their accessories may be not same as this manual please understand.

Marks Instruction

	All with this symbol you should have to operate strictly according to instruction. If not, it may cause damage to washing machine and even endanger the user's life.
	All with this symbol there is something we are forbidden to do in any way. If not, it may cause damage to washing machine and even endanger the user's life.

- Please check the power socket carefully and make sure the ground wire is connected for safety operation.
- Power supply is 110V/60 Hz.

1

IMPORTANT SAFETY PRECAUTION

Please connect the plug to 110V-power socket, and make sure the ground-wire is connected firmly. If possible, please use the water-proof protector.

Please make sure you can remove plug conveniently when using the machine. You should have to remove plug and stop water supply when power off or moving machine. You should not fix or remove plug with wet hands.

Do not over bend, stretch and press the power cord.

Please keep plug clean and dry.

If there is some trouble with power cord or plug, please call the professional to deal with it.

If washing machine is installed on the ground with carpet, please make sure the carpet not blocked the vents.

Do not pour the hot water over 50°C into the tub.

Please do not place the machine in the bathroom. Such action may damage the electrical insulation.

Do not clean machine with spray water.

Do not put the wet clothes heavy and things on the top of machine.

Do not wash water-proof clothing such as rain coat, car covers, etc. Abnormal vibration may occur in spin.

Please pay attention to washing the heating clothes to avoid damage.

Do not share one power socket with other electrical appliances.

Do not use unappointed power source.

Please keep plug strip clean.

2

IMPORTANT SAFETY PRECAUTION

Never put your hand into the tub while the machine is working. Keep children away from the machine.

Do not disassemble, repair and repack the machine by yourself.

Do not put heavy or hot things on the top of machine.

Do not wash laundry soaked with petrol and organic solvent.

Keep the machine away from children, persons with physical, sensory or mental disabilities, or anyone who are not familiar with the usage of this machine, unless guidance is given.

Make sure the filter is in good condition and fixed well before wash.

3

INSTALLATION & ADJUSTMENT

For users to use the machine safely and correctly, please install and adjust the machine according to this instruction.

Remove Package

- Open and remove carton box, take the rat-proof board out.
- Open top cover of washing machine, take out the accessories from the tub.
- Remove other packages including the base foam in the nest plastic.

Fix the rat-proof board

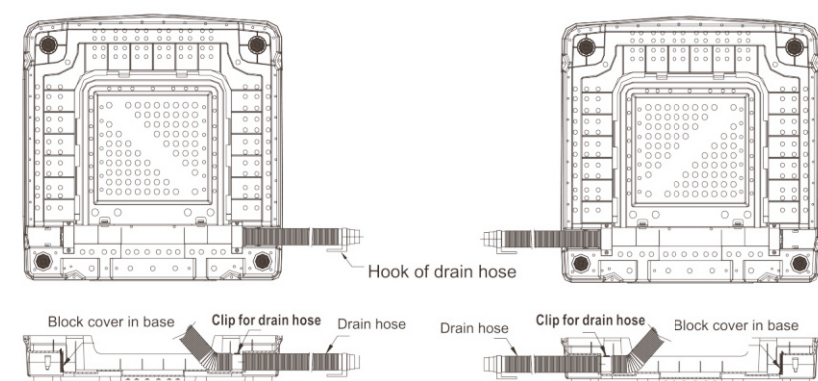
- Tilt the back of machine a little.
- Put Rat-proof board up and follow the arrow direction to insert the board on the bottom of the machine and fix it well.

Adjustment

- Keep the machine away from the wall more than 20mm. The maximum allowance inclination angle between the ground and palm is 2°. Uneven or tilted ground may cause the machine uneven running or stop working. Please adjust the machine as following.
- Level**
Hang a rope with tied hammer to confirm whether the machine is in the level line.
 - Adjust**
Adjust the adjustable feet by slightly up, rotate the feet until arrive the level line.

4

USAGE OF DRAIN HOSE



- Unload the screws of the back covers by screwdriver. Remove the back cover and unload the clips.
- Take the hook of drain hose and put the drain hose out from the base.
- Unload the block cover from base and put it back to another hole of base.
- Put the drain hose through the opposite side of hole for drain hose. Fix the drain hose well.
- Put the drain hook onto the drain hose.
- Put back the back cover onto the machine and fix well.

Keep the drain hose drain smoothly.

1. The height of drain hose should be less than 100cm. Otherwise, it will cause draining not smooth even the machine will stop working if it take long time to drain water.

2. Do not stampede or press the drain hose.

4. If you need to have longer drain hose, please buy the drain hose separately and add in. The dia. of drain hose should be same or over than 30mm dia. and the length should be less than 1.5m.

3. If the drain hose is too long, it can be cut to shorter. In order to have better water flowing, please cut the hose diagonally.

5. When adding the drain hose, please cut from A or B.

5

INSTALLATION OF INLET HOSE

Note carefully:
1. Please use new water inlet hose assembly from the package. The old water inlet hose assembly should not be reused.
2. Allowed input water pressure: 0.03-1.00MPa.

Correct Faucet

Usable faucet

Unusable faucet

Connect the inlet hose to faucet

- Slide down the slider to unload the inlet-water connection from the inlet-water assembly. (See picture 1)
- Make sure the exposed thread is 4mm (see picture 6). If the exposed thread less than 4mm, please loosen the nut and make the exposed thread is 4mm.
- Loosen the inlet water screws to appropriate position and connect to the faucet, see picture 2. (If the mouth dia. of faucet is too big, the inlet water hose cannot connect with faucet, please loosen the 4 screws and unload the bush, see picture 3).

Picture 1: Inlet water connection, slider, screwdriver, screw, marked cap, bush.

Picture 2: Inlet water hose, slider, screwdriver, screw, marked cap, bush.

Picture 3: Inlet water hose, slider, screwdriver, screw, marked cap, bush.

Picture 4: Inlet water hose, slider, screwdriver, screw, marked cap, bush.

Picture 5: Inlet water hose, slider, screwdriver, screw, marked cap, bush.

Picture 6: Inlet water hose, slider, screwdriver, screw, marked cap, bush.

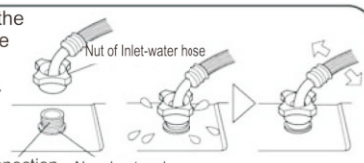
6

INSTALLATION OF INLET HOSE

Note carefully:
1. Please use new water inlet hose assembly from the package. The old water inlet hose assembly should not be reused.
2. Allowed input water pressure: 0.03-1.00MPa.

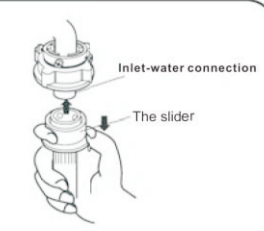
Connect inlet water hose to washing machine

- Must not remove the absorbent pad. Please check the absorbent pad every time before using to make sure it is in good condition.
- Connect the inlet hose to the inlet valve connection.
- Fasten the nut and make sure it is fixed well.



Connection of inlet water hose

- Press down the slider, insert the hose into the connection.
- Loose the slider until hearing the "CLICK" sound.



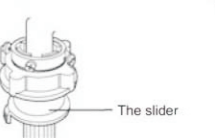
Check the connection

- Put the inlet hose slightly to confirm it fixed well.
- Open the faucet to check the leakage.
- Do not bend the hose with strong force.
- Please check the connections and keep it fixed well every time before using.



Unload the inlet hose

- Close the faucet.
- Press down slider to take the hose down.
- There is no need to unload the inlet hose if you use the washing machine over 1 time per week.



7

PREPARATION BEFORE WASHING

Preparation before wash

- Fix the inlet hose well to faucet, open the faucet.
- Make sure the socket is ground-connected before you make the plug in power.
- Put the drain hose down.

Note: Water temperature SHOULD NOT over 50°C.

Check the laundry before wash

- Check and make sure the laundry is fit for wash in washing machine, suitable for washing in water to avoid clothing deformed.
- Do not wash decolorized clothing together with normal clothing.
- Make sure the laundry have no corrs, clips, buttons, needles, etc.
- Fasten the buttons, zipper of the clothing. And turn them inside before wash.
- Put the floating clothing down to the bottom before washing. If the clothing float on the surface of water, please press "Pause/Start" button to stop washing and press the clothing down to bottom and Press "Pause/Start" button to restart washing again.
- Do not wash water-proof laundry such as shower curtain, raincoat, etc. Do not wash carpet and electric blanket to avoid abnormal vibration and accident.
- Put the underwear, panty bra, clothing with lace, nylon and thin fibre into special washing net before washing.
- Do not wash the clothes with volatile stain.
- Do not over wash. Please put the denim jeans and large clothes loosely into the tub.

Do not wash carpet and electric blanket!
Do not spin the worsted wool fabric clothes to avoid clothes shrinkage and deformation.
Do not spin the down clothes and waterproof clothing to avoid dangerous!

8

PUT IN WASHING AND DETERGENT

- The capacity is the allowed maximum standard weight of dry laundry in one operation.
- Laundry thickness, size, type, etc. will affect the actual washing capacity. It is better to put the appropriate laundry into the washing machine.
- Put in detergent in tub.

Weight of laundry for reference

Quilt (about 900g in cotton)

Work-wear (upper & pants) (about 1120g in cotton)

Jeans (about 800g)

Coat in the mixed (about 800g)

Pajamas (about 200g)

Shirt (about 300g in cotton)

Socks (about 50g in the mixed)

T-Shirt (about 180g in cotton)

Underwear (about 70g in cotton)

Sheet for single (about 600g in cotton)

9

PROGRAM OPERATION

LEVEL

PROCESS

START/PAUSE

POWER

8 optional levels (default level 6)

Start/Power Button: Press power to connect the power. Switch on the power button to cut off the power.

Process Button: Press power to connect the power. Switch on the power button to cut off the power.

Start/Power Button: Press power to connect the power. Switch on the power button to cut off the power.

Process Button: Press power to connect the power. Switch on the power button to cut off the power.

Start/Power Button: Press power to connect the power. Switch on the power button to cut off the power.

Process Button: Press power to connect the power. Switch on the power button to cut off the power.

- Process/preset button
10 different washing procedures
01Common, 02Normal, 03Quick, 04Blanket, 05Air-dry (Push button LEVEL/Air-dry could choose dry time), 06Soak, 07Wash, 08Spin, 09Wash and Rinses, 10Rinses and Spin.
Under initial state press this button for 3 seconds enter appointment with 0-24h adjustable.
- Power Button
Powered on, press this button to launch machine.
During routine, press to pause. Then press again to start.
- Power Button
Press "power" to connect the power. Switch on the power button to cut off the power.

10

MAINTENANCE

- Please keep clean and clear away the scraps and debris.
- Please cut off power supply when cleaning and clearing the scraps and debris.

The usage of filter

- Must use filter during washing.
- User should have to clean the filter after finish washing.
- Installation and removal of filter:
1. Press down the elastic plate in the upper of filter, then pull out the filter, see picture 1.
2. Pull out the back cover of filter by pulling the end of back cover, see picture 2.
3. Clean the filter.
4. Put the upper back cover into the upper filter, press the end of back cover into front filter, see picture 2.
5. Put the end filter into filter box. Please the upper filter into the box.
6. Make sure the filter is fixed well to avoid loose when washing.

Filter in inlet valve could be blocked easily. User should use brush to clean it in every 2 months.

When the body is dirty, please clean it by wet wipes.

- Do not wash with spray water.
- Clean with neutral detergent.
- Never use or apply alcohol, and the like. This will damage the machine.

- Note:
- When finish washing, please turn off water supply (if necessary, unload the water inlet hose).
 - Please do not leave water in tub over a long time. Drain the water anytime when finish washing.
 - Please remove the plug from socket before maintenance.
 - Hang the plug and drain hose well.
 - Use the clean and soft wipes to clean the machine. Open the cover for about 1 hour until it is dry, then close the cover.

11

TROUBLESHOOTING

Before you call for technician or send your machine for repair, please check from this troubleshooting list:

* Do not attempt to repair the machine by yourself.

Phenomenon	Possible Causes	Resolvment
The light would not light. The machine does not work.	1. The plug is not connected well to the power outlet. 2. There is no power in the power outlet. 3. The Power is not pressed down to offer power. 4. There is no power supply at all.	1. Connect the plug well to the power outlet. 2. Check the power outlet or connect to another power outlet. 3. Press down the "power". 4. Start again when supplying power.
Water inlet hose in leakage	1. The inlet hose is not fixed well to the faucet. 2. The inlet hose is not fixed well to the washing machine.	1. Fix the inlet hose well to the faucet again. 2. Fix the inlet hose well to the washing machine.
Unable to drain.	1. The level of draining mouth is too high or the drain hose is not put down. 2. The drain hose is bended or blocked.	1. Put the drain hose down. 2. Put the drain hose well, resolve the blocked.
Unable to input water	1. There is no water supply. 2. The faucet is not open. 3. The inlet is blocked.	1. Start again when supplying water. 2. Open the faucet. 3. Clean the inlet.
Stopped during spinning	The spinning laundry are not balanced.	The machine itself would automatically correct the imbalance by adding water.
Unable to spin	1. The top cover is open after draining. 2. Reopen the top cover when spinning.	1. Close top cover well. 2. Close top cover well.
Spin intermittently when spinning	It is for better spin result.	It is normal. Don't worry.
There is some water in drain hose when first use	It is the little water left in the machine when testing in factory.	It is normal. Don't worry.

12

PACKING INSTRUCTION

Name of part	Quantity	Store location
Water inlet hose assembly	1 set	Inner tub
Instruction manual	1 set	In bag
Rat-proof board	1 set	In upper foam
Automatic washing machine	1 set	

13