



Service Bulletin

Bulletin No.: 09-06-04-026R

Date: August, 2019

INFORMATION

Subject: Identifying Non-GM (Aftermarket) Engine Calibrations for Gasoline Engines Using Tech 2® or GDS 2 (U.S. and Canada)

Models: 2005-2006 Chevrolet Corvette – Equipped with any V8 Gasoline Engine
2007-2020 GM Passenger Cars and Light Duty Trucks – Equipped with any V8 Gasoline Engine
2012-2020 GM Passenger Cars and Light Duty Trucks – Equipped with any HFV6 Gasoline Engine
2019-2020 GM Passenger Cars and Light Duty Trucks – Equipped with 2.0L — RPO LSY or 2.7L — RPO L3B Gasoline Engines

Attention: Refer to the GM Service Policy and Procedures Manual for the latest GM Policy and Procedures Information. This Bulletin also applies to any of the above models that may be Export vehicles from North America.

This Bulletin has been revised to add Model Year 2020 Passenger Cars and Light Duty Trucks and update the last Notice in Section 2. Please discard Corporate Bulletin Number 09-06-04-026Q.

Table of Contents

- 1. Engine, Transmission, Transfer Case, Rear Axle Components and Catalytic Converter Failures Due to Non-GM ECM Calibrations Being Installed
- 2. Calibration Retrieval and Calibration Verification Procedure for Service Agents NOT REQUIRED to Call PQC for Powertrain/ Drivetrain Assembly Replacement Authorization
- 3. Calibration Retrieval and Calibration Verification Procedure for Service Agents REQUIRED to Call PQC for Powertrain/ Drivetrain Assembly Replacement Authorization
- 4. Retrieving Engine Calibration ID and Verification No. (Number) Information Using the Tech 2® - This Action is Required for ALL Service Agents (Model Dependent)
- 5. Tech 2® Displaying All Zeroes for the Verification Numbers on the Vehicle Information - Calibration ID and Verification No. (Number/CVN) Screen
- 6. Retrieving Calibration Information From Global A Vehicles Using GDS 2 - This Action is Required for ALL Service Agents (Model Dependent)
- 7. Creating a .jpg or .jpeg File From a GDS 2 Calibration History Screen Shot Using Microsoft Paint
- 8. Calibration Verification Procedure — For Service Agents NOT REQUIRED to Call PQC for Powertrain/Drivetrain Assembly Replacement Authorization — Using the Tech 2® or GDS 2
 - 8. A. Calibration Verification Procedure — Using the Tech 2®
 - 8. B. Calibration Verification Procedure — Using GDS 2
- 9. Calibration Verification Procedure — For Service Agents REQUIRED to Call PQC for Powertrain/Drivetrain Assembly Replacement Authorization — This Procedure MUST be Performed by the Calibrations Group
- 10. Procedure for ALL Service Agents for E-mailing .jpg or .jpeg Files to the Calibration Group at — TACCVN@gm.com
- 11. Calibrations Group - New E-mail Address - TACCVN@gm.com
- 12. Warranty Information

1. Engine, Transmission, Transfer Case, Rear Axle Components and Catalytic Converter Failures Due to Non-GM ECM Calibrations Being Installed

Notice:

- Be advised that GM **REQUIRES** retrieving the Calibration Information and performing the Calibration Verification Procedure as outlined in this Bulletin, whenever diagnostics determine a hard part failure may have occurred on internal engine parts and **BEFORE** disassembly, repair or replacement of an engine assembly under warranty.
- Be advised that GM strongly recommends retrieving the Calibration Information and performing the Calibration Verification Procedure as outlined in this Bulletin, whenever diagnostics determine a hard part failure may have occurred on transmission, transfer case or rear axle components and before disassembly, repair or replacement of a transmission, transfer case or rear axle assembly under warranty. It is also recommended that the ECM Calibration Verification Procedure be performed whenever diagnostics determine that catalytic converter replacement is necessary.
- It is not a requirement to verify transmission control module calibrations on gasoline engine applications.

General Motors is identifying an increasing number of engine, transmission and catalytic converter part failures that are the result of non-GM ECM calibrations being installed.

When alteration to the GM-released ECM calibration occurs, it subjects powertrain and driveline components such as engine, transmission, transfer case, driveshaft and the rear axle to stresses that were not tested by General Motors. It is because of these unknown stresses, and the potential to alter reliability, durability and emissions performance, that GM has adopted a policy that prevents any **UNAUTHORIZED** Service Agent Warranty Transaction submissions to any remaining warranty coverage, to the powertrain and driveline components whenever the presence of a non-GM calibration is confirmed, even if the non-GM ECM calibration is subsequently removed.

Warranty coverage is based on the equipment and ECM calibrations that were released on the vehicle at time of sale, or subsequently updated by GM. That's because GM testing and validation matches the calibration to a host of criteria that is essential to assure reliability, durability and emissions performance over the life of the warranty coverage and beyond. Stresses resulting from calibrations that are different from those tested and released by GM can damage and/or weaken components, leading to poor performance and/or shortened life.

Additionally, non-GM issued ECM modifications often do not meet the same emissions performance standards as GM issued calibrations. Depending on

state statutes, individuals who install ECM calibrations that put the vehicle outside the parameters of emissions certification standards may be subject to fines and/or penalties.

This bulletin outlines the **Calibration Retrieval and Calibration Verification Procedures** for **ALL** Service Agents including Service Agents **NOT** Required to Call PQC for Powertrain/Drivetrain Assembly Replacement Authorization and Service Agents Required to Call PQC for Powertrain/Drivetrain Assembly Replacement Authorization, using the Tech 2® or GDS 2 to identify the presence of non-GM control module calibrations.

If a non-GM calibration is found and verification has taken place through GM, the remaining powertrain and driveline warranty **may** be blocked and noted in Global Warranty Management (GWM) and the dealership will be notified. This block prevents any **UNAUTHORIZED** warranty claim submission.

2. Calibration Retrieval and Calibration Verification Procedure for Service Agents NOT REQUIRED to Call PQC for Powertrain/Drivetrain Assembly Replacement Authorization

Notice:

- The Service Agent Service Department Personnel is **NOT REQUIRED TO E-MAIL TAC** the digital Calibration Verification photos from the Tech 2® screen or GDS 2 screen shot, **UNLESS** non-GM calibrations are found.
 - The Service Agent Service Department Personnel is **REQUIRED TO RETAIN ALL** of the related documentation showing the Calibration Information was Retrieved and the Calibration Verification Procedure was completed, in the Service Agent Vehicle History Service File.
- Depending on the vehicle being serviced, the Service Department Personnel is **required** to complete one of the following procedures, either **Step 1.1** or **Step 1.2** in order to ensure that there are **not** any non-GM ECM calibrations present:
 - Section 4. Retrieving Engine Calibration ID and Verification No. (Number) Information Using the Tech 2®**
After retrieving the calibration information, Go to Step 2.
OR
 - Section 6. Retrieving Calibration Information From Global A Vehicles Using GDS 2**
After retrieving the calibration information, Go to Step 2.
 - After **retrieving the Calibration Information and performing Section: 8. Calibration Verification Procedure — For Service Agents NOT REQUIRED to Call PQC for Powertrain/Drivetrain Assembly Replacement Authorization — Using the Tech 2® or GDS 2** the Service Department Personnel is **required** to

retain all of the related documentation showing the procedures were completed in the Service Agent Vehicle History Service File.

⇒ If the Calibration Verification Procedure determines that **THERE ARE** non-GM ECM calibrations present, the Service Department Personnel **MUST** follow the procedure as instructed in: **Section 10. Procedure for All Service Agents for E-mailing .jpg or .jpeg Files to the Calibration Group at — TACCVN@gm.com**

3. When returning an engine assembly that is requested through the WPC Parts Return Program, a **printed copy** of the Tech 2® Vehicle Information - Engine Calibration ID and Verification No. (Number/CVN) screen or the GDS 2 Calibration History (Events) screen shot **must** be attached to the documentation being returned with the unit.

Notice: For additional information, refer to the latest version of Corporate Bulletin #16-NA-338: Warranty Administration - Engine and Transmission Assembly Replacement and PQC Process in SI.

3. Calibration Retrieval and Calibration Verification Procedure for Service Agents REQUIRED to Call PQC for Powertrain/Drivetrain Assembly Replacement Authorization

Notice:

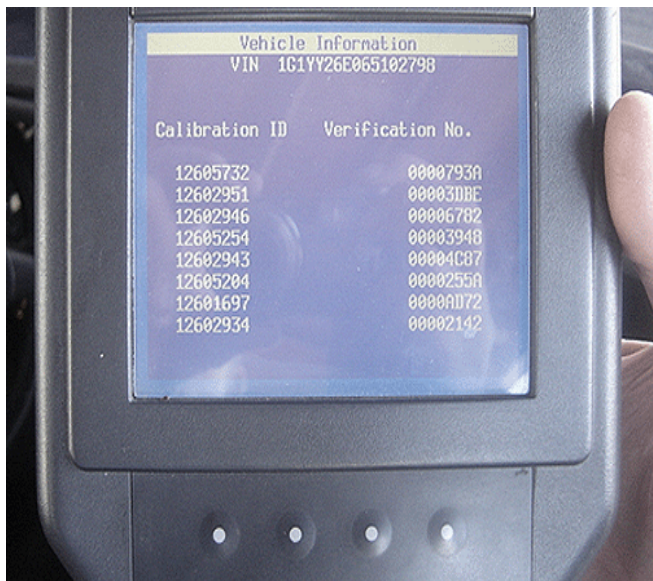
- The Service Agent Service Department Personnel is **REQUIRED TO E-MAIL TAC** the digital Calibration Verification photos from the Tech 2® screen or GDS 2 screen shot in .jpg or .jpeg format only, to the following e-mail address: TACCVN@gm.com
 - The Service Agent Service Department Personnel is **REQUIRED TO RETAIN ALL** of the related documentation showing the Calibration Information was Retrieved and the Calibration Verification Procedure was performed by the Calibrations Group which is their e-mail response, in the Service Agent Vehicle History Service File.
1. Depending on the vehicle being serviced, the Service Department Personnel is **required** to complete one of the following procedures, either **Step 1.1 or Step 1.2** in order to ensure that there are not any non-GM ECM calibrations present:
 - 1.1. **Section 4. Retrieving Engine Calibration ID and Verification No. (Number) Information Using the Tech 2®**
OR
 - 1.2. **Section 6. Retrieving Calibration Information From Global A Vehicles Using GDS 2**

2. After **retrieving the Calibration Information and referring to Section: 9. Calibration Verification Procedure — For Service Agents Required to Call PQC for Powertrain/Drivetrain Assembly Replacement Authorization — MUST be Performed by the Calibrations Group**, follow the procedure in **Section 10. Procedure for All Service Agents for E-mailing .jpg or .jpeg Files to the Calibration Group at — TACCVN@gm.com**
3. The Service Department Personnel is **required** to retain all of the related documentation showing the procedures were completed in the Service Agent Vehicle History Service File.
4. When returning an engine assembly that is requested through the WPC Parts Return Program, a **printed copy** of the Tech 2® Vehicle Information - Engine Calibration ID and Verification No. (Number/CVN) screen **OR** the GDS 2 Calibration History (Events) screen shot **must** be attached to the documentation being returned with the unit.

4. Retrieving Engine Calibration ID and Verification No. (Number) Information Using the Tech 2® - This Action is Required for ALL Service Agents (Model Dependent)

Notice: This information applies to vehicles that are Tech 2® compatible and is typical of the procedure that will be used.

1. Connect the **Tech 2®** to the vehicle.
2. Go to: **Diagnostics** and build the vehicle.
3. Select: **Powertrain**.
4. Select: **Engine**.
5. Select: **Engine Control Module or PCM**.
6. Select: **Module ID Information or I/M Information System** if the Module ID Information selection is not available.
7. If: **"I/M information System"** was selected, it may be necessary to select **"Vehicle Information"** in order to display the calibration information.
 - ⇒ If the CVN information is displayed as "N/A", it will be necessary to contact the TCSC at 1-800-828-6860 for English or 1-800-503-3222 for French to obtain the CVN information.
 - ⇒ If the CVN Information is displayed as all zeroes, refer to **Section: 5. Tech 2® Displaying All Zeroes for the Verification Numbers on the Vehicle Information - Calibration ID and Verification No. (Number/CVN) Screen**



2278650



2889412

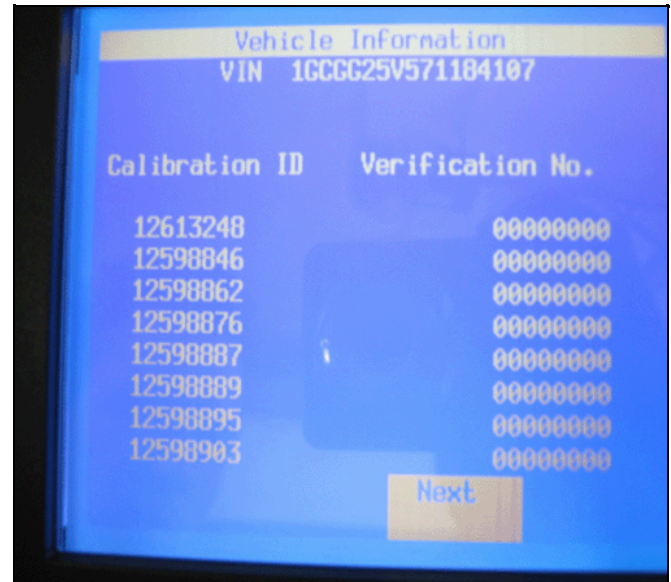
Notice:

- Two examples of the Tech 2® Vehicle Information - (Engine) Calibration ID and Verification No. screens are shown.
 - The Tech 2® Vehicle Information - Calibration ID and Verification No. screen will differ slightly depending on vehicle and model year.
8. Take a **CLEAR** digital picture(s) of the Tech 2® Vehicle Information screen showing the **entire VIN, (Engine) Calibration ID and Verification No. (Number/CVN)** and save it in .jpg format.

Notice: It is recommended that an electronic copy of the Tech 2® screen photograph(s) also be saved.

9. **Retain** the printout information and the Tech 2® screen photograph(s) with the repair order.

5. Tech 2® Displaying All Zeroes for the Verification Numbers on the Vehicle Information - Calibration ID and Verification No. (Number/CVN) Screen



2363198

If the Tech 2® that is being used displays all zeroes for the Verification Numbers as shown, then perform the following steps:

1. Update the Tech 2® with the latest software from TIS2WEB.
2. Turn **OFF** the ignition for 90 seconds.
3. Connect the Tech 2® to the vehicle.
4. Turn **ON** the ignition, and build the vehicle. Observe the Tech 2® Vehicle Information - Calibration ID and Verification No. (Number/CVN) screen for proper operation.

⇒ If the Tech 2® screen still does not display properly, then turn **OFF** the ignition for 90 seconds again. Turn **ON** the ignition and observe the same screen for proper operation.

6. Retrieving Calibration Information From Global A Vehicles Using GDS 2 - This Action is Required for ALL Service Agents (Model Dependent)

Notice: This information applies to Global A - GDS 2 compatible vehicles and is typical of the procedure that will be used.

1. Turn **OFF** the ignition.
2. Connect the MDI to the Data Link Connector (DLC) of the vehicle.

Notice: Use the USB port to make the following MDI connection:

3. Connect the MDI to a PC or laptop that has been downloaded with the GDS 2 application from TIS2WEB.

Notice: At least one Diagnostic Package must be installed on the PC to perform diagnostics. If GDS 2 was just installed, select: Add New Diagnostic Package and then select a: Diagnostic Package to download.

4. Select: **GDS 2** icon on the PC.
5. Select: **Diagnostics** icon.
6. Select: **serial number of the MDI** being used.
7. Select: **Enter** icon.
8. Select: **Module Diagnostics**.
9. Select: **Engine Control Module**.

Notice: Due to the model selected, vehicle build, software and RPO variations, GDS 2 may ask for additional information in Step 10.

10. Select: **Engine ID**, if prompted.
11. Select: **ID Information**.
12. The **Diagnostics** page will appear.

Calibration History

Diagnostic Data Display | Line Graph

Save Report | Add Snapshot Bookmark

Parameter Name	Control Module	Value	Unit
Vehicle Identification Number (VIN)	Engine Control Module	2G1FK3DJ8C9122813	
Calibration History Buffer	Engine Control Module	Unlocked	
Engine Calibration Part Number History 1	Engine Control Module	12646748	
Calibration Verification Number History 1	Engine Control Module	7159	
Engine Calibration Part Number History 1 Counter	Engine Control Module	1	
Engine Calibration Part Number History 2	Engine Control Module	0	
Calibration Verification Number History 2	Engine Control Module	0000	
Engine Calibration Part Number History 2 Counter	Engine Control Module	255	
Engine Calibration Part Number History 3	Engine Control Module	0	
Calibration Verification Number History 3	Engine Control Module	0000	
Engine Calibration Part Number History 3 Counter	Engine Control Module	255	
Engine Calibration Part Number History 4	Engine Control Module	0	
Calibration Verification Number History 4	Engine Control Module	0000	
Engine Calibration Part Number History 4 Counter	Engine Control Module	255	
Engine Calibration Part Number History 5	Engine Control Module	0	
Calibration Verification Number History 5	Engine Control Module	0000	
Engine Calibration Part Number History 5 Counter	Engine Control Module	0	
Engine Calibration Part Number History 6	Engine Control Module	0	
Calibration Verification Number History 6	Engine Control Module	0000	
Engine Calibration Part Number History 6 Counter	Engine Control Module	0	
Engine Calibration Part Number History 7	Engine Control Module	0	
Calibration Verification Number History 7	Engine Control Module	0000	
Engine Calibration Part Number History 7 Counter	Engine Control Module	0	
Engine Calibration Part Number History 8	Engine Control Module	0	
Calibration Verification Number History 8	Engine Control Module	0000	
Engine Calibration Part Number History 8 Counter	Engine Control Module	0	
Engine Calibration Part Number History 9	Engine Control Module	0	
Calibration Verification Number History 9	Engine Control Module	0000	

Back | Feedback | Home | Module | Enter

GDS 2 v.9.5.00200 | GM Global v2012.6.0 | VIN: 2G1FK3DJ8C9122813 | 2012,Chevrolet,Camaro | 12.3 V

2889523

Notice: This is a typical view of a GDS 2 Calibration History Events Screen. GDS 2 is capable of displaying up to 10 Calibration History Events.

13. Select: **Calibration History** from the drop down menu in order to display the following items on the screen, including the VIN:
 - **Calibration History Buffer**
 - **Number of Calibration History Events Stored**
 - **Calibration Part Number History**
 - **Calibration Verification Number History**

14. Select: **Save Report**.

Note: Repeated "FFFF"s or "0000"s are harmless. They are place holders, and are not actual calibrations. It is not necessary to photograph extra screens containing only this type of calibration (FFFF's or 0000's).

15. Select: **Print**.

Notice: It is recommended that an electronic copy of the GDS 2 Calibration History also be saved. Refer to Section: 7. Creating a .jpg or .jpeg File From a GDS 2 Calibration History Screen Shot Using Microsoft Paint

16. Retain a copy of the printed screen shot with the repair order.

7. Creating a .jpg or .jpeg File From a GDS 2 Calibration History Screen Shot Using Microsoft Paint

1. Select: **Start** icon.
2. Select: **All Programs**.
3. Select: **Accessories**.
4. Select: **Paint**.
5. Navigate to: **Calibration History** .
6. Press the: **Print Scrn** button.
7. Open: **Microsoft Paint**.
8. Select: **Paste**.
9. Select: **Save As**.
10. Select: **Desktop**.
11. Select: **File name**. Name the file. As an example use the **VIN**.
12. Select: **Save as type**, using the drop down menu.
13. Select: **JPEG**

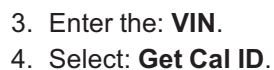
8. Calibration Verification Procedure — For Service Agents NOT REQUIRED to Call PQC for Powertrain/Drivetrain Assembly Replacement Authorization — Using the Tech 2® or GDS 2

1. Go to: **TIS2WEB Home Page**.

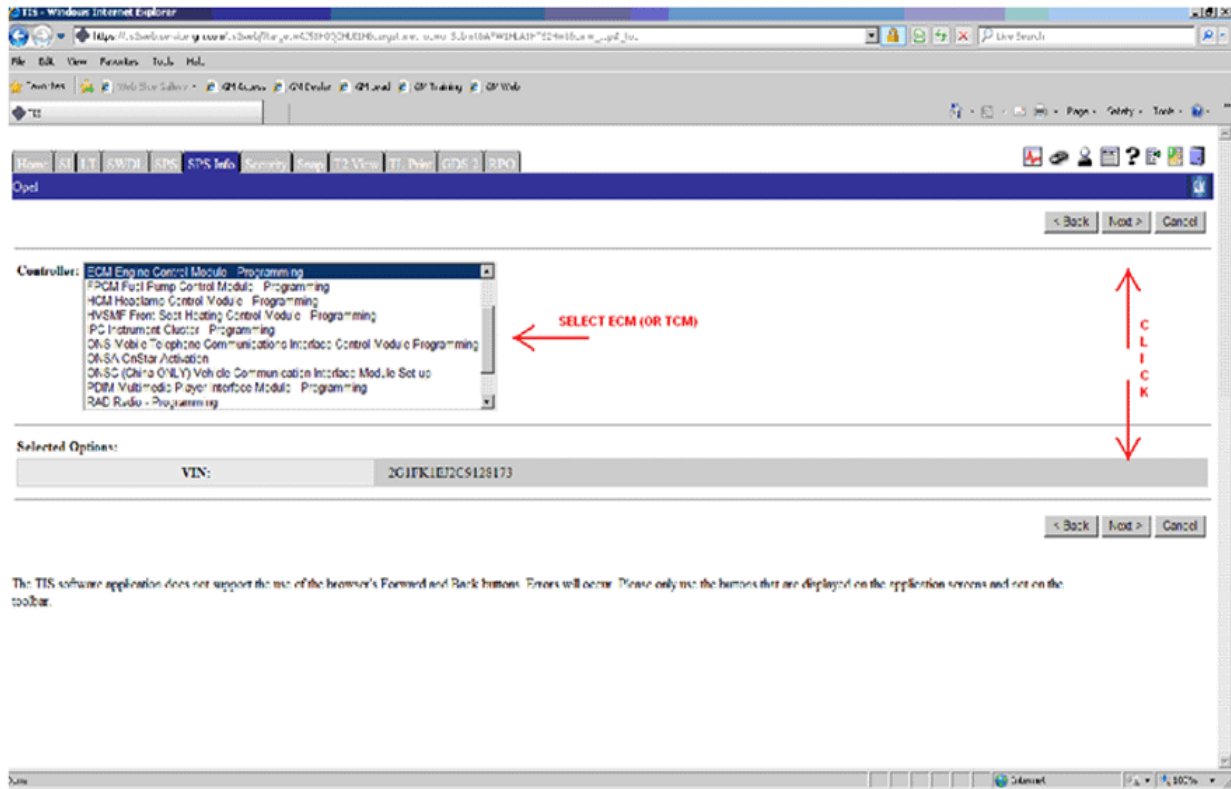


2. Select: **Calibration Information (SPS Info).**

3340046

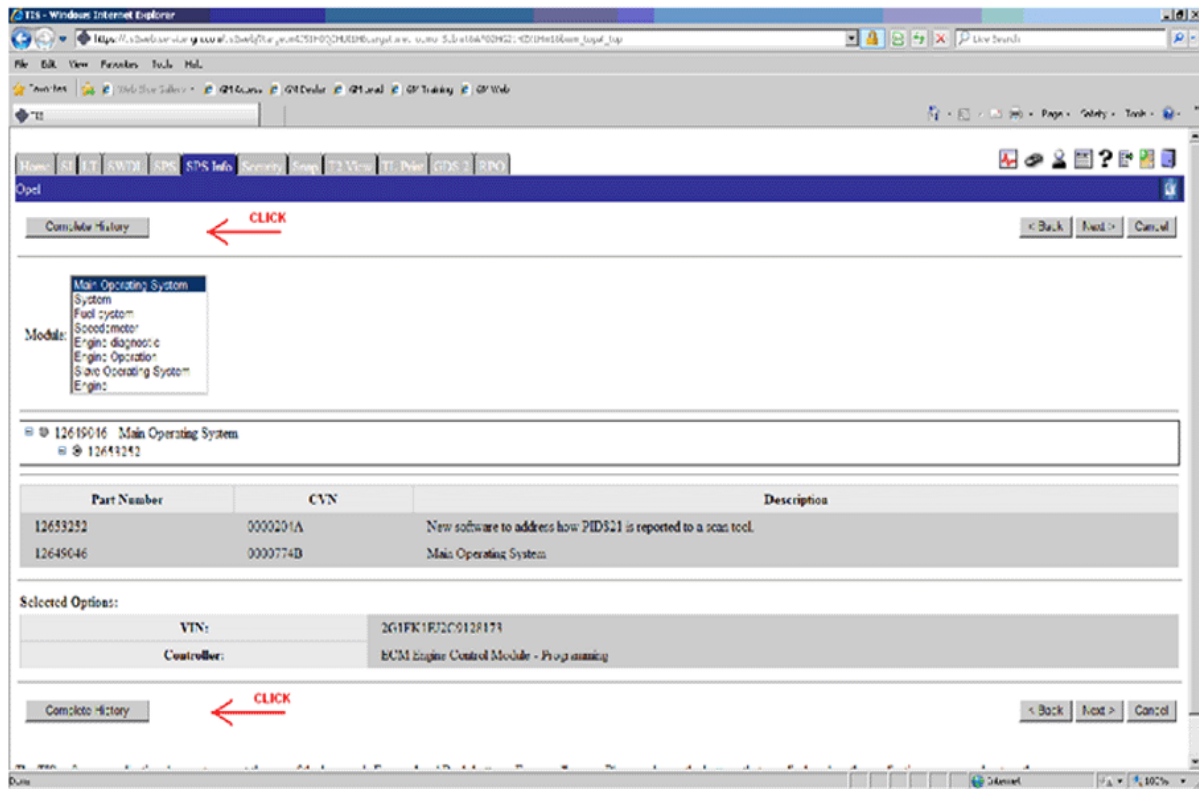


3340097



5. Select: **ECM Engine Control Module — Programming** from the Controller dropdown menu and select: **Next**.

3340122



6. Select: **Complete History** at the top left or bottom left of the page to access the GM Vehicle Calibration Information screen, which displays all of the GM Approved Calibrations and CVNs (Calibration Verification Numbers).
 - ⇒ If the vehicle being serviced requires using the Tech 2®, Go to subsection: **8. A. Calibration Verification Procedure — Using the Tech 2®**
 - ⇒ If the vehicle being serviced requires using GDS 2, Go to subsection: **8. B. Calibration Verification Procedure — Using GDS 2**

3340145

8. A. Calibration Verification Procedure — Using the Tech 2®

GM Vehicle Calibration Information

VIN:	3GTRKWE38AG224430
Controller:	ECM Engine Control Mod

Calibration History for: Main Operating System

Part Number	CVN	Bulletin #	
12636005	0000C1D6	-	Main Operating System.

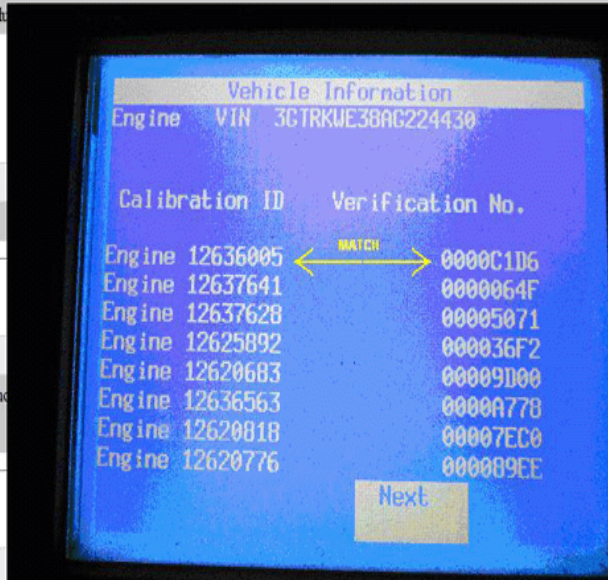
MATCH

Calibration History for: System

Part Number	CVN	Bulletin #	
12650898	0000CC93	-	New calibration with diagno
12620776	000089EE	-	System

Calibration History for: Fuel system

Part Number	CVN	Bulletin #	
12650881	0000371C	-	Fuel System



3336860

Compare each: **Calibration ID Part Number and Verification No. (Number/CVN) from your Tech 2® photo** to the corresponding **Calibration ID Part Number and Verification No. (Number/CVN) listed in the TIS2WEB GM Vehicle Calibration Information screen of TIS2WEB** to ensure that they are **ALL an EXACT MATCH**.

- ⇒ If **ANY** of the Calibration ID Part Number and Verification No. (Number/CVN) when **COMPARED** to the Calibration ID Part Number and Verification No. (Number/CVN) listed in the TIS2WEB GM Vehicle Calibration Information screen, **DO NOT MATCH**, then non-GM calibrations may be present and you should follow the procedure in Section: **10. Procedure for All Service Agents for E-mailing .jpg or JPEG Files to the Calibration Group at — TACCVN@gm.com** in order to e-mail your findings to the Calibration Group, who will then document your information with the appropriate Brand Quality Manager in the Brand Quality Team.

8. B. Calibration Verification Procedure — Using GDS 2

GDS 2

Calibration History

Diagnostic Data Display Line Graph

Save Report Add Snapshot Bookmark

Parameter Name	Control Module	Value	Unit
Vehicle Identification Number (VIN)	Engine Control Module	2G1FT1EW3C9181831	
Calibration History Buffer	Engine Control Module	Unlocked	
Engine Calibration Part Number History 1	Engine Control Module	12646750	
Calibration Verification Number History 1	Engine Control Module	8BC4	
Engine Calibration Part Number History 1 Counter	Engine Control Module	1	
Engine Calibration Part Number History 2	Engine Control Module	0	
Calibration Verification Number History 2	Engine Control Module	0000	
Engine Calibration Part Number History 2 Counter	Engine Control Module	255	
Engine Calibration Part Number History 3	Engine Control Module	0	
Calibration Verification Number History 3	Engine Control Module	0000	
Engine Calibration Part Number History 3 Counter	Engine Control Module	255	
Engine Calibration Part Number History 4	Engine Control Module	0	
Calibration Verification Number History 4	Engine Control Module	0000	
Engine Calibration Part Number History 4 Counter	Engine Control Module	255	
Engine Calibration Part Number History 5	Engine Control Module	0	
Calibration Verification Number History 5	Engine Control Module	0000	
Engine Calibration Part Number History 5 Counter	Engine Control Module	0	
Engine Calibration Part Number History 6	Engine Control Module	0	
Calibration Verification Number History 6	Engine Control Module	0000	
Engine Calibration Part Number History 6 Counter	Engine Control Module	0	
Engine Calibration Part Number History 7	Engine Control Module	0	
Calibration Verification Number History 7	Engine Control Module	0000	

Back Feedback Home Module Enter

GDS 2 v9.6.00300 GM Global v2012.8.0 VIN: 2G1FT1EW3C9181831 2012,Chevrolet,Camaro 12.7 V

8:13 AM 9/5/2012

3338923

TIS - Windows Internet Explorer

https://tis2web.service.gm.com/tis2web/7?target=ARVNH01BNH067NH08&target.method=onSubmit&A818K0428K05U7K0=1&bm=A818K0428K05U7K0#A818K0428K05U7K0

File Edit View Favorites Tools Help

Favorites Web Slice Gallery GM Access GM Dealer GM Lead GM Training GM Web

TIS

Calibration History for: Speedometer

Part Number	CVN	Bulletin #	Description
12644633	00000D80	-	Speedometer

Calibration History for: Engine diagnostic

Part Number	CVN	Bulletin #	Description
12646757	00000A89	-	Engine diagnostic

Calibration History for: Engine Operation

Part Number	CVN	Bulletin #	Description
12646750	00008BC4	-	Engine Operation

MATCH

Calibration History for: Slave Operating System

Part Number	CVN	Bulletin #	Description
12625892	000036F2	-	New software for start of production
12618797	0000F865	-	Slave Operating System

3339024

Compare each: **Engine Calibration Part Number History parameter** and **Calibration Verification Number History parameter** from the GDS 2 Calibration History screen to the Calibration Part Number and Calibration Verification Number (CVN) listed in the GM Vehicle Calibration Information screen of TIS2WEB to ensure that they are **ALL** an **EXACT MATCH**.

⇒ If **ANY** Engine Calibration Part Number History parameter and Calibration Verification Number History parameter when **COMPARED** to the Engine Calibration Part Number History parameter and Calibration Verification Number History listed in the TIS2WEB GM Vehicle Calibration Information screen, **DO NOT MATCH**, then non-GM calibrations may be present and you should follow the procedure in Section: **10. procedure for All Service Agents for E-mailing .jpg or JPEG Files to the Calibration Group at — TACCVN@gm.com** in order to e-mail your findings to the Calibration Group, who will then document your information with the appropriate Brand Quality Manager in the Brand Quality Team.

9. Calibration Verification Procedure — For Service Agents REQUIRED to Call PQC for Powertrain/Drivetrain Assembly Replacement Authorization — This Procedure MUST be Performed by the Calibrations Group

Notice: For Service Agents Required to Call PQC for Powertrain/Drivetrain Assembly Replacement Authorization, the Calibration Verification Procedure MUST be Performed by the Calibrations Group

- Assemble the Calibration Information that was retrieved when you performed Section: **4. Retrieving Engine Calibration ID and Verification No. (Number) Information Using the Tech 2® - This Action is Required for ALL Service Agents (Model Dependent)**
OR
- Assemble the Calibration Information that was retrieved when you performed Section: **6. Retrieving Calibration Information From Global A Vehicles Using GDS 2 - This Action is Required for ALL Service Agents (Model Dependent)**
- Go to Section: **10. Procedure for ALL Service Agents for E-mailing .jpg or JPEG Files to the Calibration Group at — TACCVN@gm.com**.

10. Procedure for ALL Service Agents for E-mailing .jpg or .jpeg Files to the Calibration Group at — TACCVN@gm.com

Notice:

1. **ALL** screen shots **MUST** be sent as a .jpg or .jpeg file. Keep all photos in **ONE** e-mail.
2. **DO NOT** e-mail photos from the GDS 2 in the automatic format of a .png file. Your e-mail will arrive at the Calibrations Group with the .png file(s) having been stripped by the security firewall.
1. Create an e-mail to be sent to: **TACCVN@gm.com**
2. Attach the Tech 2® digital .jpg photos or the GDS 2 .jpg photos to the e-mail. **Keep ALL photos in one e-mail.**
3. In the **Subject Line** of the e-mail include the following:
 - 3.1. The phrase: **“V6 Cal”, “V8 Cal” or “4-Cyl Cal”**
 - 3.2. The complete: **VIN**
 - 3.3. The **Service Agent BAC**
4. In the **Body** of the e-mail include the following:
 - 4.1. The complete: **VIN**
 - 4.2. The **Mileage**
 - 4.3. The **Service Agent BAC**
 - 4.4. The Technician / Service Manager Name
 - 4.5. The Return email Address
 - 4.6. The **Repair Order (R.O.) or Job Card number**
 - 4.7. The **Customer Complaint**
 - 4.8. The **Cause of the Condition**
 - 4.9. **Any Modifications noted**

Notice: Requests that are sent to the Calibrations Group are handled in the order in which they were received.

5. The Service Agent will receive an e-mail reply after the calibrations have been validated. The e-mail reply **will advise** the Service Agent if the calibrations are **OEM**.
 - ⇒ If non-GM ECM calibrations are determined to be present, the Calibrations Group will forward the case to the appropriate Brand Quality Manager for review. The Brand Quality Manager will then determine whether the warranty will be blocked and will respond to all parties concerned.
6. You may call the PQC two hours after submitting the e-mail to the Calibrations Group (or after the results have been received by e-mail) for

authorization to replace the assembly. This time allows the Calibrations Group to receive, review, verify the calibrations and set up a case for the request. The Calibrations Group will also update the PQC or TAC case with the **results of the Calibration Verification Request**.

Be prepared to provide all the usual documentation that is normally required when requesting an assembly authorization from the PQC.

Notice: **DO NOT** contact GM Technical Assistance (TAC) to discuss warranty concerns on the non-GM calibrations. **ALL** questions and concerns about warranty should be directed to the District Manager Aftersales (DMA), in Canada the DM-CCSP (District Manager-Customer Care and Service Process).

11. Calibrations Group - New E-mail Address - TACCVN@gm.com

The Calibrations Group has a new e-mail address to be used when mailing the digital .jpg or .jpeg photographs of the Engine Calibration ID and Verification No. (Number) Information taken from the Tech 2® or .jpg or .jpeg photographs from the GDS 2 Calibration History screen shot.

E-mail all .jpg or .jpeg files to this address:
TACCVN@gm.com

12. Warranty Information

- The Dealership Service Management must be involved in any situation that would justify the use of labor operation 0600014.
- Notify the District Manager Aftersales (DMA), in Canada the DM-CCSP (District Manager-Customer Care and Service Process) of the situation.
- All claims will have to be routed to the Warranty Support Center (WSC) for approval.
- Please refer to the latest version of Corporate Bulletin Number 09-00-89-016, Labor Operation 0600014 - Suspected Tampering or Vehicle Modifications for important information.

For vehicles repaired under warranty, use:

Labor Operation	Description	Labor Time
0600014	Suspected Tampering or Vehicle Modifications	0.2 hr

