

**KEL  
TEC**



**KS7™**

**SAFETY,  
INSTRUCTION  
& PARTS MANUAL**

**⚠ WARNING:** Read this manual carefully before loading or using the KS7.

# TABLE OF CONTENTS

<b>Safety Information and Warnings</b> .....	<b>2</b>
<b>Overview</b> .....	<b>5</b>
I.    Description .....	5
II.   Nomenclature .....	5
III.  Safety .....	6
IV.  Specifications .....	7
V.   Ammunition .....	8
<b>Operating Instructions</b> .....	<b>9</b>
I.    Loading Magazine and Chambering .....	9
A.  Loading Magazine Tube .....	9
B.  Chambering from Magazine Tube.....	9
C.  Manual Chamber Loading .....	10
II.   Sights, Firing, and Unloading.....	11
A.  Sight Picture .....	11
B.  Firing.....	11
C.  Unloading .....	13
<b>Breakdown</b> .....	<b>14</b>
I.    Disassembly.....	14
A.  Remove Grip .....	14
B.  Remove Stock .....	15
C.  Remove Bolt .....	15
D.  Separate the Barrel and Receiver .....	16
II.   Assembly.....	18
III.  Proper Care .....	20
A.  Maintenance .....	20
B.  Lubrication .....	20
C.  Troubleshooting.....	21
<b>Customer Service</b> .....	<b>22</b>
I.    Service/Repair .....	22
II.   Warranty.....	22
<b>Exploded View and Parts</b> .....	<b>24</b>
I.    KS7 .....	24

## SAFETY INFORMATION AND WARNINGS

This manual explains the function and the handling of the KS7 and warns of the potential dangers, including death or serious personal injury that can result from the unsafe use of the KS7. This manual should always accompany the KS7 and be transferred with it, as well as, if it is sold or loaned to another person.

Even if you are an experienced shooter, you must READ THIS ENTIRE MANUAL CAREFULLY before loading or firing the KS7. This manual gives basic instructions on the proper handling and functioning of the KS7. The safety of yourself and that of others will depend on you following the instructions and warnings in this manual. Always use safe firearms practices. If you are unfamiliar with firearms, take a course in the safe handling of firearms run by a qualified firearms instructor, your local gun club, or a similar qualified organization.

This manual contains several safety warnings and instructions preceded with **WARNING**, **CAUTION**, or **NOTICE**. These signal words are designed to draw your attention to important safety information.

**WARNING** indicates a hazardous situation which, if not avoided, could result in death or serious injury.

**CAUTION** indicates a hazardous situation which, if not avoided, could result in minor or moderate injury.

**NOTICE** addresses safety practices not related to personal injury.

**WARNING** Firearms can cause death or serious personal injury. Safety must be the prime consideration of anyone who handles firearms.

**WARNING** The KS7 is designed to function reliably with proper care and knowledgeable use. Do not use your KS7 unless you fully understand how to safely operate it.

**WARNING** It is your responsibility to use safe firearm handling habits. Accidents are the result of violating the rules of safe firearms handling as well as the warnings noted in this manual.

**WARNING** Always seek a doctor's advice if you are taking medication and/or are pregnant to be sure that you are able to shoot and handle a firearm safely. Never drink alcoholic beverages and/or take drugs before or while shooting. Your vision and judgment could be seriously impaired, making your firearm handling unsafe.

**WARNING** Always treat a firearm as though it were loaded.

**⚠️ WARNING** Always keep the muzzle pointed in a safe direction. Never point a firearm at anyone or anything you do not intend to shoot.

**⚠️ WARNING** Always keep your finger off the trigger and outside the trigger guard until you have made the decision to fire.

**⚠️ WARNING** Always wear hearing and eye protection when using your firearm.

**⚠️ WARNING** Never accept or pick up a firearm without checking the magazine and the chamber to make sure that it is unloaded.

**⚠️ WARNING** Do not trust the extractor to remove the cartridge from the chamber. Always check to confirm that it is empty.

**⚠️ WARNING** Always make sure the KS7 is unloaded, on SAFE, and the action is open before handing it to another person.

**⚠️ WARNING** Never allow a firearm to be used by individuals who are not familiar with its safe operation and rules of firearm safety.

**⚠️ WARNING** Never alter or modify the KS7 because this could cause it to malfunction, create a dangerous condition, and void the warranty.

**⚠️ WARNING** Be sure all accessories are compatible with the firearm, properly installed on the firearm, and that the accessories do not interfere with safe operation of the firearm. Follow the instructions provided by the accessory manufacturer to the extent those instructions are not inconsistent with the warnings and instructions contained in this manual.

**⚠️ WARNING** If the KS7 is dropped or forcefully struck, it could be damaged and may not function properly. Have it inspected by Kel-Tec CNC Industries, Inc. before continued use.

**⚠️ WARNING** Never load a firearm except immediately before shooting. When transporting your firearm, be sure your firearm is unloaded, on SAFE, and the action is open.

**⚠️ WARNING** Never store or transport firearms and ammunition together, keep them locked up and away from children and other unauthorized persons.

**⚠️ WARNING** Always secure firearms from children. You are responsible for the firearm's safety and security.



Most ammunition contains lead in the projectile and/or primer. Discharging firearms in poorly ventilated areas, cleaning firearms, or handling ammunition may result in exposure to lead and other substances known to cause birth defects, reproductive harm, cancer, and other serious physical injury. Have adequate ventilation at all times. Wash hands thoroughly after exposure.

The KS7 was tested, carefully inspected, and packaged before it left the factory. Kel-Tec CNC Industries, Inc. cannot control what happens to the KS7 after it leaves the factory. Therefore, carefully examine the KS7 when you acquire it to ensure that it is unloaded and undamaged. If you do not understand any of the warnings and instructions in this manual or have any problems operating the KS7, contact Kel-Tec CNC Industries, Inc. at:

**KEL-TEC CNC INDUSTRIES INC**

1505 Cox Road  
Cocoa, FL 32926

**Telephone Number:** 321-631-0068 Toll free: 1-800-515-9983

**Hours:** M-F 9am-6pm EST (excluding holidays)

**Website:** <https://www.keltecweapons.com>

**Email:** [customerservice@keltecweapons.com](mailto:customerservice@keltecweapons.com)

The current version of the instruction manual can also be downloaded at:  
<https://www.keltecweapons.com>

# OVERVIEW

## I. DESCRIPTION



Figure 1

The KS7 is a lightweight, single-magazine tube fed 12-gauge pump-action shotgun. The bullpup design provides the operator with a compact layout without compromising capacity.

The KS7 features positive extraction and ejection, allowing it to be reliably fired in any shooting orientation. Loading and ejection are combined into a single port rearward of the grip assembly under the shotgun, enabling the KS7 to be fired from both the dominant and non-dominant side.

Unloaded, the KS7 maintains a center of gravity over the grip assembly to facilitate ease of handling from the grip or the carry handle. M-LOK™ compatible slots are located on the stock, pump and carry handle for mounting compatible accessories.

## II. NOMENCLATURE



Figure 2

1 – STOCK	8 – PUMP
2 – RECEIVER	9 – SLIDE RELEASE
3 – BARREL	10 – TRIGGER
4 – CARRY HANDLE	11 – ASSEMBLY PINS RETAINER
5 – M-LOK SLOTS	12 – SAFETY
6 – MUZZLE	13 – LOADING/EJECTION PORT
7 – MAGAZINE CAP	14 – M-LOK SLOT

### III. SAFETY



Figure 3

Please note that the safety will not engage unless the hammer is cocked.

For right-handed users, the safety is generally pressed with the right thumb until a noticeable “click” is heard and the red letter “F” is visible on the safety. The safety is color coded and labeled to enhance visibility and hasten safety assessment.



Figure 4

**WARNING** The safety **MUST** reach its intended position. If you do not completely disengage or engage the safety and instead stop the safety midway, you may still be able to pull the trigger. The safety will not engage unless the hammer is cocked. The pump may need to be cycled again in either of these scenarios.

**WARNING** Never completely rely on a mechanical safety as it can fail or become unintentionally disengaged. A mechanical safety is **NOT A SUBSTITUTE** for safe firearm handling practices.

## IV. SPECIFICATIONS: KS7

### A. Overall

Gauge	12
Operation	Pump-Action
Trigger System	Hammer fired, single-action
Capacity	6 + 1 (3" shells); 7 + 1 (2.75" shells)

### B. Measurements

#### Weight

---

Shotgun w/o Shells	5.9 lbs	2.7 kg
Loaded (7 - 3" Shells)	6.6 lbs	3.0 kg

#### Dimensions

---

Chamber (12 gauge)	3.0 in	76 mm
Barrel Length	18.5 in	470 mm
Length of Pull	13.0 in	330 mm
Pump Travel	4.1 in	104 mm
Length	26.1 in	663 mm
Width (widest point)	1.9 in	48 mm
Height	9.3 in	236 mm

#### Force

---

Trigger Pull	6.0 lb	2.7 kg
--------------	--------	--------

*Table 1*



## V. AMMUNITION

**⚠ WARNING** Always check that the ammunition is clean, undamaged, and the correct caliber for the shotgun. **DO NOT** use non-standard ammunition or shells with pressures exceeding SAAMI standards. Forcing substandard ammunition into the chamber could result in damage to property or to your firearm, or death.

**NOTICE** The KS7 is a lightweight, bullpup shotgun, which when shot with high powered ammunition, will have a sharp recoil, similar to a lightweight over-under or side-by-side shotgun; selecting ammunition designed for reduced energy may soften the perceived recoil of the firearm.

The KS7 is chambered for 12-gauge 3" shells and may safely fire both lead and steel shot. Shells 2-3/4" and shorter are also safe to fire, but anything shorter than 2-3/4" should be thoroughly tested for reliable feeding and ejection. For reference, the chamber gauge and length are indicated on the receiver of the shotgun.

Never use ammunition where the pressure levels exceed industry standards. KelTec firearms are manufactured from high quality materials. They will provide extended service life. However, all warranties, expressed or implied, are voided and KelTec will not be liable for property damage or personal injury and consequential damages, if faulty, non-standard, or reloaded ammunition is used in any KelTec firearm.

Not all ammunition produces the same result, we recommend that once you find a brand that functions best, keep using it. Kel-Tec CNC Industries, Inc. does not recommend using hand loads, reloads, remanufactured ammunition, foreign or military surplus ammunition of unknown or questionable quality. The use of this type of ammunition will: void the warranty, be dangerous, and possibly cause death or serious injury if the ammunition is not made to the proper specifications.

# OPERATING INSTRUCTIONS

## I. LOADING MAGAZINES AND CHAMBERING

### A. LOADING MAGAZINE TUBE

1. Ensure the firearm is unloaded and on **SAFE**.
2. Ensure the muzzle is pointed in a safe direction before loading.
3. Ensure the pump is locked in the forward position.
4. Rotate the shotgun upside down.
5. With thumb on the base of the shell, insert the shell into the loading/ejection port and slide the shell into the magazine tube as shown below.
6. Slide forward into magazine tube until the catches grab the brass of the shell and continuing loading as needed.

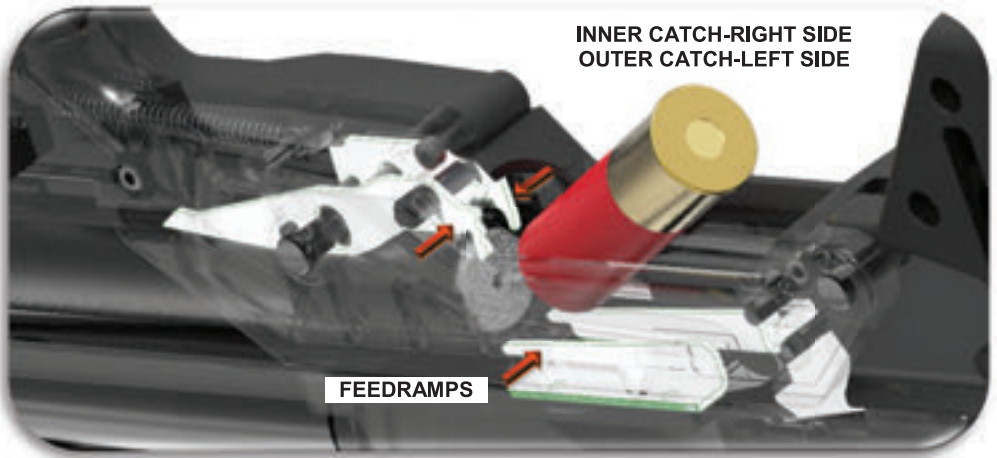


Figure 5

**NOTICE** There are built-in feedramps on the bottom of the bolt carrier to assist with feeding shells into the magazine tube.

### B. CHAMBERING FROM MAGAZINE TUBE

1. Press down on the pump release, located in front of the trigger guard and maintain downward pressure to unlock the pump.
2. Slide the pump fully rearward and then fully forward to chamber a shell.

**A SHELL IS NOW CHAMBERED IN THE SHOTGUN. ENSURE SAFETY IS ENGAGED UNTIL THE FIREARM IS TO BE FIRED.**

**CAUTION**

Ensure your hand is placed on the pump of the firearm in a proper manner for cycling; not doing so may short stroke the pump or pinch your hand.



Figure 6

**CAUTION**

Springs and sliding parts can pinch skin and loose clothing.

### **C. MANUAL CHAMBER LOADING**

The procedure for loading a shell directly into the chamber of the KS7 is different than most other shotguns because of the combined loading and ejection port. To load a shell into the chamber of the KS7, use the following procedure as a guideline.

1. Ensure the firearm is unloaded and on SAFE.
2. Ensure the muzzle is pointed in a safe direction before loading.
3. Press down the pump release, located in front of the trigger guard to unlock pump.
4. Slide the pump so that it is about a 1/2" from the rearmost position to prevent the lifters from rotating and blocking access to the chamber.
5. Insert the shell into the chamber and slide the pump forward to chamber the inserted shell.

## II. SIGHTS, FIRING, AND UNLOADING

### A. SIGHT PICTURE

The KS7 has a fiber optic sight built into the carry handle of the firearm, located towards the muzzle end. This fiber optic is used similar to a bead sight on a shotgun. To gain a sight picture, center the front fiber optic over the rear notch as reference, as shown in Figure 7. The fiber optic is not adjustable. However, the KS7 barrel assembly will accept the KSG picatinny rail as an aftermarket accessory, allowing the use of a red dot or flip-up sights.



Figure 7

### B. FIRING

**WARNING** Before firing the KS7, run a clean patch through the barrel, from the chamber end, using a cleaning rod. Repeat this procedure until the patch comes out of the barrel with no gun oil or cleaner-lubricant-preservative on it because any obstruction in the barrel could prevent the KS7 from firing properly, resulting in death or serious personal injury and/or damage to the KS7.

**WARNING** Ensure the barrel is free of obstructions prior to firing. Open the action and clear the firearm of all ammunition before checking the barrel of the unloaded firearm. Any obstruction in the barrel could prevent the KS7 from firing properly and result in death or serious personal injury and/or damage to the firearm.

**⚠️ WARNING** Never use the KS7 if it fails to function properly, and never force the pump forward on a jammed shell because it could cause the shell to explode or damage the KS7.

**⚠️ WARNING** Never pull the trigger if the action does not fully close to prevent a possible out of battery firing. If this happens, unload the KS7 as described on the next page, examine the shell that was in the chamber, and check the chamber to ensure that there are no obstructions or debris in it.

**⚠️ WARNING** Never discharge a firearm without proper shooting glasses and ear protection.

**⚠️ WARNING** Never shoot until you are sure of your backstop and what lies beyond it.

**⚠️ WARNING** Never shoot at a hard surface, such as a rock, or a liquid surface, such as water, because a bullet may ricochet and travel in any direction, striking you or someone else.

**⚠️ WARNING** When firing on a target range, be alert and follow the range officer's commands. Always be aware of other people so that they cannot accidentally walk into the line of fire. Make sure your "audience" is always at least 5 feet behind you, not next to you, when firing.

**⚠️ WARNING** Always carry the KS7 unloaded while on a range until preparing to fire. Always keep the KS7 pointed towards the backstop and/or safe direction when loading, firing, and unloading it.

**⚠️ WARNING** After firing several shells, the exterior metal parts of the KS7 get very hot and can cause severe burns if touched.


**⚠️ WARNING** The KS7 ejects spent shells downward out of the ejection port. Even after limited firing those shells are hot and can cause burns if contacting unprotected skin.

**⚠️ WARNING** The KS7 is a very short firearm. Make sure you have a firm grip of the handle and at no time extend fingers or body parts in the line of fire.

**⚠️ WARNING** The KS7 has a manual pump. During firing or inspection, make sure fingers or body parts are safe from the path of the pump.

Once all warnings are understood and implemented, prepare to fire:

1. Center the front sight in the channel of the handle. The rear sight notch should align with the bottom of the front sight as shown in Figure 7. Take aim at the target while also taking notice of the target's backdrop.
2. Disengage the safety by pushing the safety button with your thumb.
3. Place trigger finger into the trigger guard.
4. **WHEN THE TRIGGER IS PRESSED, THE KS7 WILL FIRE.** Slowly squeeze the trigger until a shell is fired. Upon firing, slide pump fully rearward extracting and ejecting the empty shell, then return to the forward position to feed another shell.
5. To fire another shell, squeeze the trigger. This sequence can be repeated until the last shell has been fired. After the magazine is emptied, push the safety button to **SAFE**.

 **WARNING** In case of a failure to fire, continue to hold the KS7 pointed towards the target for at least 30 seconds. If a hangfire (slow ignition) has occurred, the shell should fire within approximately 30 seconds. If the shell has not fired, slide the pump to its rearmost position, engage the safety by ensuring the white "S" is visible and remove the unfired shell from the chamber while keeping the KS7 pointed in a safe direction. (Note: dispose of misfired shells in accordance with the ammunition manufacturer's instructions).

### C. UNLOADING

 **WARNING** Always make sure the muzzle is pointed in a safe direction when unloading.

1. Ensure the firearm is on **SAFE**.
2. Ensure the pump is locked in the forward position.
3. Push outer catch down to release one or more shells in the magazine tube.

 **NOTICE** Shells will eject with some force from the magazine tube.

4. Press the slide release and pull the pump fully rearward, always visually and physically check the chamber to confirm the firearm is unloaded.

## BREAKDOWN

### I. DISASSEMBLY

**⚠ WARNING** If the KS7 has been fired, wait a sufficient amount of time for the components to cool before attempting disassembly. Failure to do so may result in burns.

**⚠ WARNING** Never rely on your memory to determine whether the KS7 is loaded or unloaded. Always open the action and then visually and physically (with your finger) check to make sure there is not a shell in the chamber.

**⚠ WARNING** Always wear safety glasses when disassembling the KS7 to protect your eyes from components that are under pressure, such as springs.

**⚠ WARNING** Never alter or modify the KS7 because this could cause it to malfunction and create a dangerous condition.

For regular maintenance of the KS7, it will be necessary that you become familiar with the firearm. The following sections should be followed in sequential order and continued as needed depending on desired maintenance.

#### A. REMOVE GRIP ASSEMBLY

1. Ensure the firearm is unloaded and on **SAFE**.
2. Remove the frame pins adjacent to the ejection port located on the grip assembly and place them in the retaining holes as shown in Figure 8.



Figure 8

3. Remove the grip assembly by rotating the rear of the assembly (A) directly upwards as shown in Figure 9.

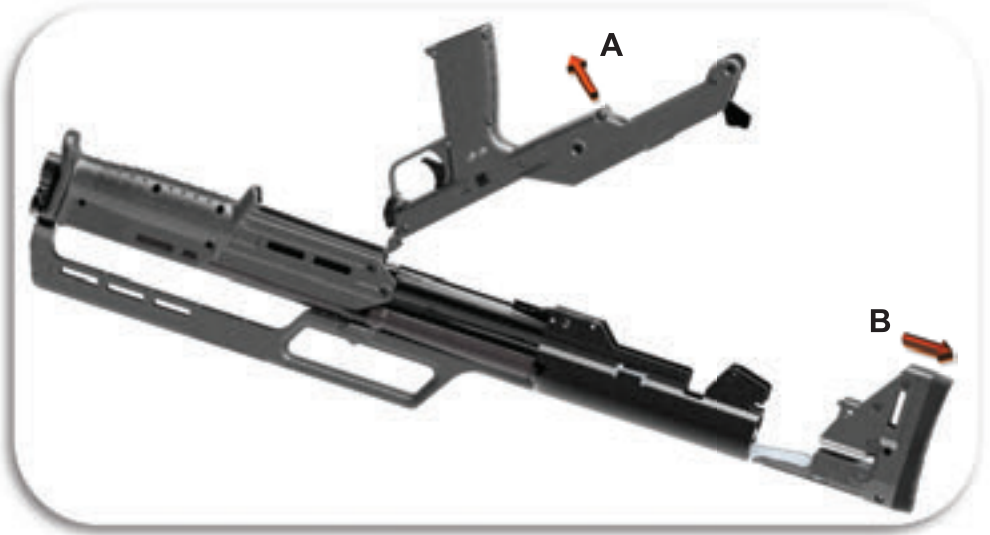


Figure 9

## **B. REMOVE THE STOCK**

1. Grip the carry handle with one hand and grip the stock with the other. Push the carry handle forward as shown in Figure 9 and pull the stock (B) rearward to remove.

**NOTICE** The stock is designed to be a snug fit in the receiver. A slight tapping with an inanimate object on the stock may be required to remove.

## **C. REMOVE THE BOLT**

1. Move the pump to its rearmost position to gain access to the bolt.
2. The bolt should now drop down from the bolt carrier as visible through the ejection port (Figure 10).
3. With the bolt resting in the receiver of the KS7. Rotate the bolt 90° in either rotational direction and then remove the bolt.



Figure 10



## D. SEPARATE THE BARREL AND RECEIVER ASSEMBLIES

1. The barrel assembly is secured to the receiver assembly by the magazine cap located on the front of the KS7.
2. Rotate the magazine cap counter-clockwise (Figure 11).

**CAUTION** The magazine cap is under heavy spring pressure from the magazine spring and may cause injury if unintentionally released from the firearm.

3. Once the magazine cap is removed, the magazine spring and follower may be removed as well. Place parts in a secure location.
4. The barrel assembly slides off the receiver assembly by pulling them apart, as shown in Figure 12.



Figure 11



Figure 12

**NOTICE** Complete field stripping (disassembly) of the firearm should look similar to Figure 13. The pump and bolt carrier assemblies remain attached to the receiver.



Figure 13

**WARNING** Further disassembly should only be performed by a certified gunsmith or Kel-Tec CNC Industries, Inc. Attempting further disassembly may void your warranty.

## II. ASSEMBLY



Even when reassembling, always wear safety glasses to protect your eyes from components that are under pressure, such as springs.



Assembly is essentially disassembly in reverse, however some steps warrant extra attention.

1. Place the barrel assembly on top of the receiver assembly as shown in Figure 12 and slide the barrel assembly into the receiver.
2. Ensure the magazine tube protrudes through the muzzle plate.
3. The barrel extension should slide into the receiver until it bottoms out and touches the receiver.
4. Add follower, magazine spring and magazine cap.
5. The magazine spring should slide into the hollow cavity of the follower and the follower should slide through the magazine tube until stopping.
6. The magazine cap should be placed on the spring.
7. The magazine spring will need to be compressed so the magazine cap can be threaded onto the magazine tube; this will cause the magazine spring to be under tension.



The magazine cap is under heavy spring pressure from the magazine spring and may cause injury if unintentionally released from the firearm.



The magazine cap and magazine tube have a fine thread pitch; use caution while threading magazine cap onto the magazine tube so as to not damage the threads.

8. Ensure the magazine cap is properly added to the magazine tube by starting to rotate the magazine cap clock-wise.
9. Continue to rotate the magazine cap onto magazine tube until the magazine cap stops on the muzzle plate.
10. Move the pump to its rearmost position.
11. Rotate the bolt in the receiver so it can be attached to the bolt carrier, as shown in Figure 10. The bottom of the bolt lock should straddle the angled section on the bolt carrier.

12. With the bolt on the bolt carrier, slide the pump to the forward-most position, locking the bolt into the barrel extension.
13. Slide the stock into the receiver as shown in Figure 9.
14. The lifter arms should pass on either side of the bolt while sliding into the receiver.
15. The grip catch on the receiver holds the front area of the grip in place.
16. Hook the front of the grip into the grip catch and rotate the grip down onto the receiver as shown in Figure 8.
17. Ensure frame pin holes line up and add the frame pins as shown in Figure 8.
18. After the KS7 is assembled it should look similar to the example in Figure 2. Once assembled, ensure the firearm functions properly by cycling the action of the firearm.



After re-assembly, always verify that any accessory, including any sub-assembly, is still properly installed on the firearm and did not become loose or disengaged, they may interfere with the safe operation of the firearm.



Never alter or modify the KS7 because this could cause it to malfunction and create a dangerous condition.

### III. PROPER CARE

#### A. Maintenance

**⚠️ WARNING** Always wear safety glasses when cleaning the KS7 to protect your eyes from cleaning materials.

**⚠️ WARNING** Always make sure that no ammunition is located in the area where you clean the KS7. Cleaning solvents can affect the primer and powder in ammunition which cause it to malfunction. This could result in a projectile being pushed into the barrel of the KS7 and getting stuck. Firing another shell with a projectile stuck in the barrel could cause the barrel to burst and result in death or serious personal injury and/or damage to the KS7.

**⚠️ WARNING** If the KS7 has been fired, wait a sufficient amount of time for the components to cool before attempting disassembly. Failure to do so may result in burns.

Your KS7 is a precision instrument and will provide a lifetime of faithful service if it is properly cleaned and maintained. It is recommended that you clean your KS7 after every shooting session or more frequently if needed. Be sure to unload your KS7 (see Unloading on pg.13) before performing any cleaning or maintenance procedures.

**NOTICE** Only use commercially available gun solvent and gun oil or a cleaner-lubricant-preservative. Use of improper cleaning fluids could damage the KS7 and void the warranty.

1. Disassemble the KS7 (see Disassembly on pg.14).
2. Thoroughly clean all exterior sides of the bolt with solvent and brush.
3. Brush the barrel bore and chamber with a good powder removing solvent and bore brush. Wipe the areas clean with patches or a swab.
4. Using a small brush dipped in solvent, remove all deposits from around the breech of the barrel as well as all adjacent areas that have been subjected to powder or primer residue.
5. Clean the magazines with solvent and brush if needed.

#### B. Lubrication

After cleaning the entire gun, use a cloth to apply a light coating of high quality gun oil to all interior and exterior metal surfaces and wipe clean. Manually cycle the action back and forth to check the function of the firearm. If any parts are damaged or badly worn or the firearm does not work correctly, the firearm should not be fired and should be returned to KelTec for servicing immediately.

**⚠️ WARNING** Discharging a firearm with oil, grease, or any other material even partially obstructing the bore could result in serious injury, damage to your firearm, and death.

## **C. Troubleshooting**

Proper functioning of your firearm is directly related to proper maintenance and care as well as the quality of ammunition you use. If in the unlikely circumstance your KS7 malfunctions, we have included a list of several suggested remedies below. If the KS7:

### **Failure to Fire (FTFR):**

Also known as a dud or misfire. This occurs when the shell feeds correctly in the chamber, the trigger is pulled, but the primer in the shell is not discharged. Point the barrel of the KS7 in a safe direction, engage the safety if possible. Otherwise the hammer is down and the safety may not engage. For either scenario, wait at least 1 minute before fully cycling the action and ejecting the shell.

- Eject the shell and set aside. Load the magazine and proceed to fire as normal. Fire one shell to see if the failure repeats. If it does not, fire a couple more, and if they are without failure the FTFR shell that was set aside is a faulty shell and should be **DISPOSED OF PROPERLY**. If the FTFR continues to occur with successive shells then it is likely that a thorough cleaning is required to ensure proper contact between the hammer and the shell.

### **Failure to Feed (FTFD):**

This type of failure occurs when the shell does not fully seat in the chamber.

- It is most like that the chamber, feed ramp, magazine spring and/or tube need to be cleaned. Properly clean and lubricate the shotgun.

### **Failure to Eject (FTEJ):**

When an empty cartridge does not fully exit the shotgun but leaves the chamber it is an FTEJ.

- Rotate the KS7 upside down and pull back the pump into the furthest rearward position. The shell should eject and a new shell should be ready to enter the chamber. Push the pump to the forward position, chambering the next shell, then return to normal firing position. Proceed to fire and see if the problem repeats; if so, the chamber and bolt need to be cleaned.

### **Failure to Extract (FTEX):**

This failure occurs when the spent shell is not removed from the chamber.

- A faulty shell could expand and get stuck in the chamber. The barrel could also be dirty and require cleaning. Additionally, check the extractor for visible damage and make sure that the spring is working.

In the case of malfunctions beyond the scope of the stated failures,

Contact KelTec Service at: [www.keltecweapons.com/contacts](http://www.keltecweapons.com/contacts)

## CUSTOMER SERVICE

### I. SERVICE/REPAIR



Always make sure the KS7 is unloaded before sending it in for service.

If your KS7 ever requires adjustment, refinishing or repair, it should be returned to Kel-Tec CNC Industries, Inc.'s service department. The unloaded firearm should be sent (shipping charges prepaid) to:

Kel-Tec CNC Industries, Inc.  
ATTN: Service Department  
1505 Cox Road  
Cocoa, FL 32926

Contact your chosen carrier to determine its requirements for shipping firearms. In certain states, your firearm may have to be returned to you through a local, federally licensed firearms dealer. Be sure to securely package your firearm and insure it for its full value because Kel-Tec CNC Industries, Inc. is not responsible for firearms lost or damaged during shipment.

To ensure prompt service and handling, include a brief letter including your name, address, telephone number, the serial number of your KS7, and what you would like to be done with it, or the issue that you would like addressed. No return authorization number is required. Once your firearm has been received, we will provide a quotation of all charges (unless the repairs are covered by the warranty) and will not begin work until we receive your approval. Charges for adjustments, refinishing, and repairs are payable by money order, Master Card, Visa or American Express. No COD or personal checks are accepted.

### II. LIMITED LIFETIME WARRANTY

Subject to the terms, conditions and limitations outlined below, Kel-Tec CNC Industries, Inc. guarantees your KS7 against defects in materials and workmanship for the lifetime of the original consumer purchaser.

To make a claim under this warranty, return your KS7 pursuant to the instructions above and include a copy of a bill of sale in your name, or a copy of the 4473 form, showing that you are the original consumer purchaser. For repairs that are covered by the warranty, Kel-Tec CNC Industries, Inc. will pay the transportation and insurance charges to return your KS7.

#### A. LIMITATIONS OF WARRANTY

The warranty will be void if any of the following occur:

(1) the instructions in the Instruction Manual are not followed;

(2) the KS7 or any of its parts are altered or modified from their original state;

(3) damage is caused by misuse, abuse or improper maintenance; or

(4) the KS7 is disassembled beyond the breakdown procedure listed in the Instruction Manual.

There are no warranties which extend beyond the description on the face hereof.

The sole and exclusive remedy pursuant to this warranty is the repair or replacement of the KS7, at the sole discretion of Kel-Tec CNC Industries, Inc.

The implied warranties of merchantability and fitness for a particular purpose are expressly disclaimed.

All disclaimers and limitations of liability shall still apply even if the limited remedy of repair and replacement fails of its essential purpose.

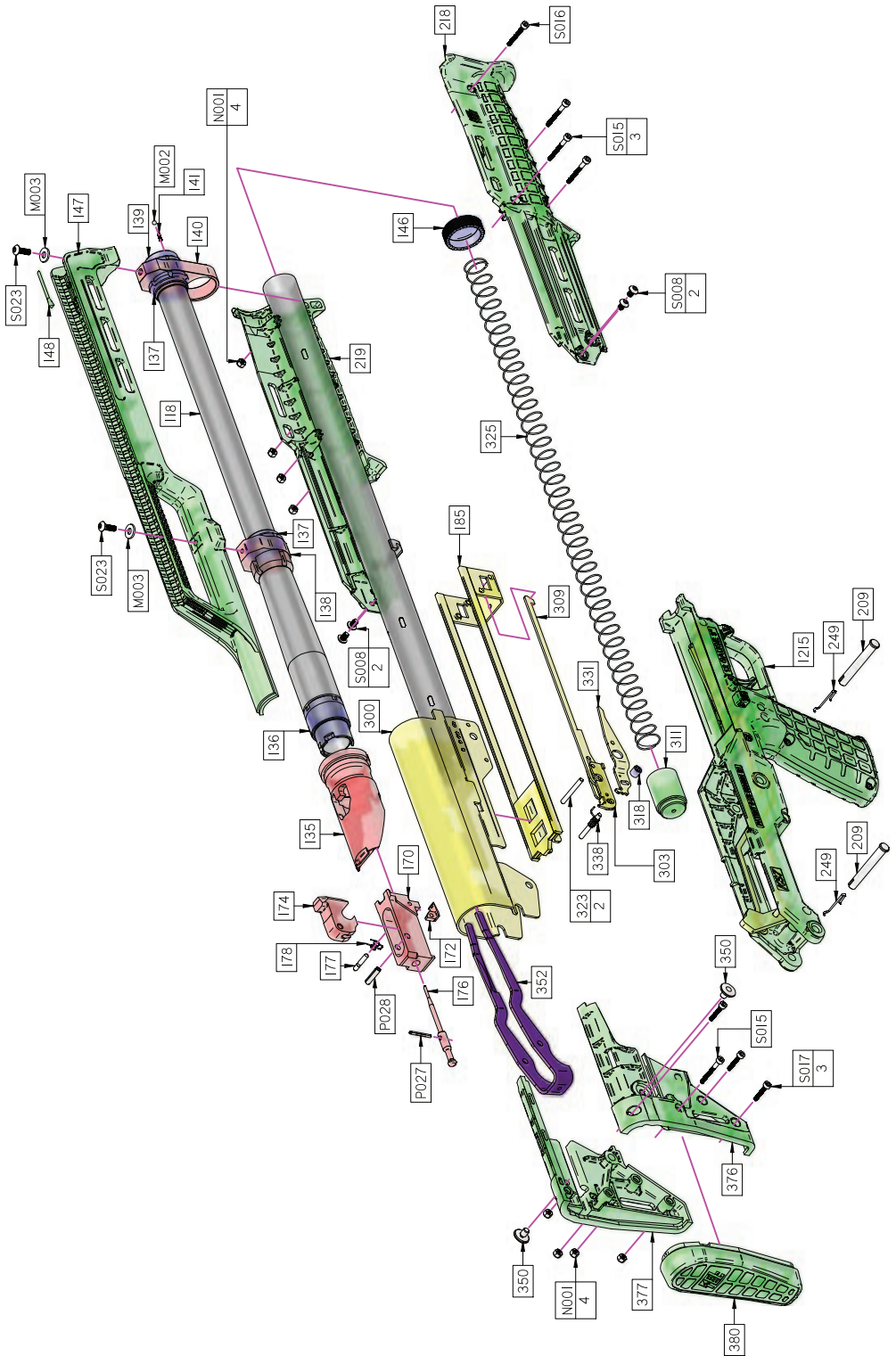
In States where permitted, Kel-Tec CNC Industries, Inc. assumes no liability for incidental or consequential damage or for incidental expenses.

Any action against Kel-Tec CNC Industries, Inc. based on an alleged breach of this warranty must be brought within one (1) year of the claimed breach.

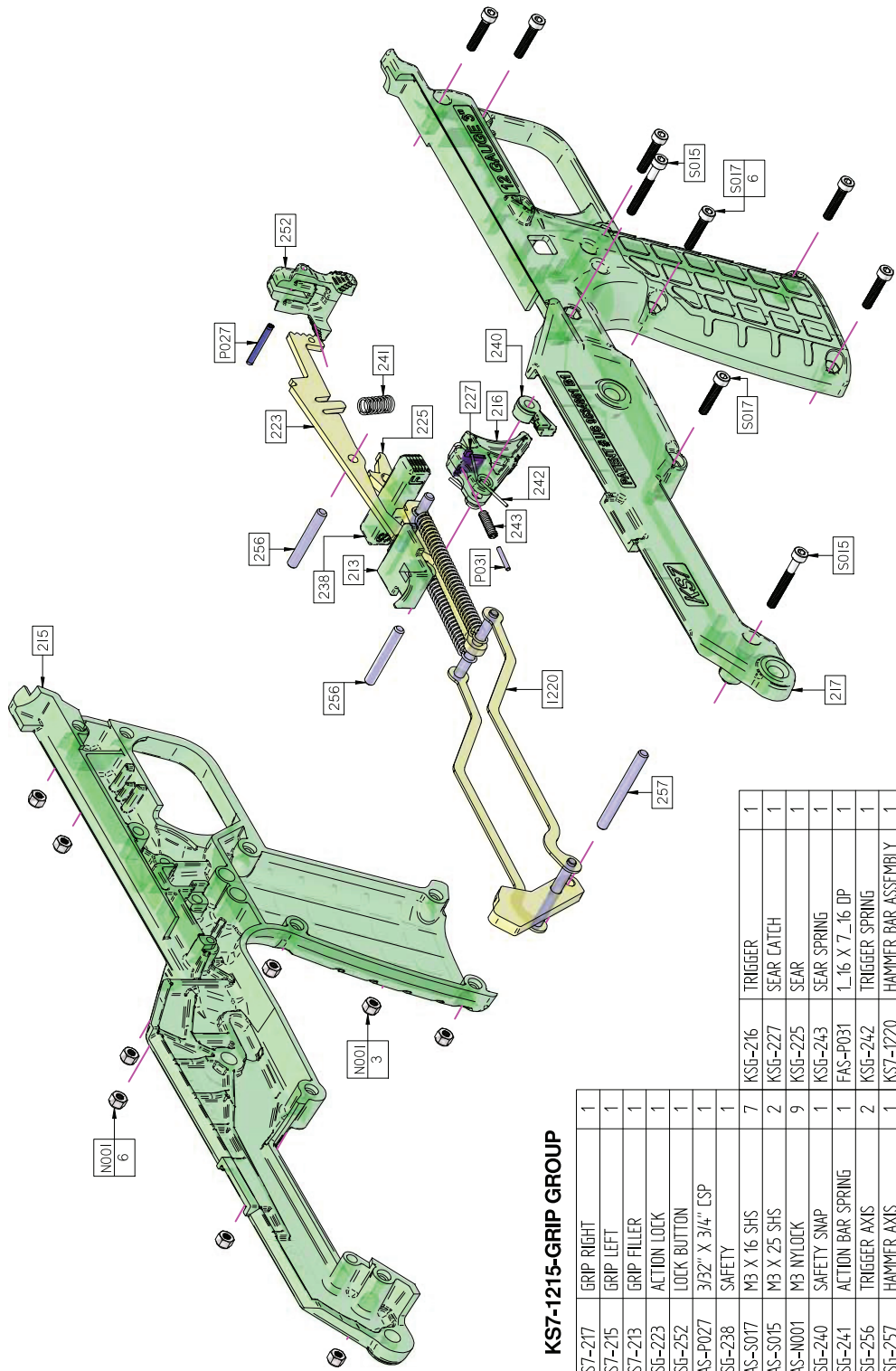
Kel-Tec CNC Industries, Inc.'s liability for breach of warranty shall be limited to repair or replacement of the KS7, at the sole discretion of Kel-Tec CNC Industries, Inc.

The KS7 is a dangerous firearm. The purchaser assumes all liability resulting from unsafe handling or any action that constitutes a violation of any applicable laws or regulations. KelTec will not be responsible for injuries or damages resulting from careless handling, unauthorized or unsafe adjustments or modifications, the use of non-standard, defective, or improper ammunition, the use of incompatible or improperly installed accessories, corrosion, neglect, fire damage, water damage, theft, abuse, ordinary wear and tear, or unreasonable use of the KS7. Under no circumstances shall KelTec be responsible for incidental or consequential damages with respect to economic loss or injury or property damage, whether as a result of breach of express or implied warranty, negligence or otherwise.





FAS-M002	1.8 STAINLESS BALL	1	KS7-147	CARRY HANDLE	1	KSG-118	BARREL	1
FAS-M003	CUSTOM WASHER	2	KS7-148	FIBER OPTIC	1	KSG-136	BARREL NUT	1
FAS-M001	M3 NYLOCK	8	KS7-185	BOLT CARRIER WELDMENT	1	KSG-137	BARREL RING	2
FAS-P027	3/32" X 3/4" CSP	1	KS7-209	FRAME PIN	2	KSG-138	SIGHT BASE	1
FAS-P028	5/32" X 5/8" LSP	1	KS7-218	FOREND RIGHT	1	KSG-170	BOLT	1
FAS-S008	M4 X 6 BHS	4	KS7-219	FOREND LEFT	1	KSG-172	EXTRACTOR	1
FAS-S015	M3 X 25 SHS	4	KS7-300	RECEIVER WELDMENT	1	KSG-174	BOLT LOCK	1
FAS-S016	M3 X 22 SHS	1	KS7-303	CTG INNER	1	KSG-176	FIRING PIN	1
FAS-S017	M3 X 16 SHS	3	KS7-309	ACTUATOR BAR	1	KSG-177	EXTRACTOR AXIS	1
FAS-S023	M4 X 12 BHS	2	KS7-318	CTG BRACE	1	KSG-178	EXTRACTOR SPRING	1
KS7-1215	GRIP ASSEMBLY	1	KS7-323	CTG STOP PIN	2	KSG-249	CAPTOR SPRING	2
KS7-135	BARREL EXTENSION	1	KS7-331	CTG OUTER	1	KSG-311	MAG FOLLOWER	1
KS7-139	MUZZLE RING	1	KS7-338	CTG SPRING	1	KSG-325	MAG SPRING	1
KS7-140	MUZZLE PLATE	1	KS7-350	LIFTER AXIS	2	KSG-352	LIFTER	1
KS7-141	DETENT SPRING	1	KS7-376	STOCK RIGHT	1	KSG-380	BUTT PAD	1
KS7-146	MAG CAP	1	KS7-377	STOCK LEFT	1			



### KS7-1215-GRIP GROUP

KS7-217	GRIP RIGHT	1
KS7-215	GRIP LEFT	1
KS7-213	GRIP FILLER	1
KSG-223	ACTION LOCK	1
KSG-252	LOCK BUTTON	1
FAS-P027	3/32" X 3/4" CSP	1
KSG-238	SAFETY	1
FAS-S017	M3 X 16 SHS	7
FAS-S015	M3 X 25 SHS	2
FAS-N001	M3 NYLOCK	9
KSG-240	SAFETY SNAP	1
KSG-241	ACTION BAR SPRING	1
KSG-256	TRIGGER AXIS	2
KSG-257	HAMMER AXIS	1
KSG-216	TRIGGER	1
KSG-227	SEAR CATCH	1
KSG-225	SEAR	1
KSG-243	SEAR SPRING	1
FAS-P031	1_16 X 7_16 DP	1
KSG-242	TRIGGER SPRING	1
KSG-1220	HAMMER BAR ASSEMBLY	1





**KELTEC**



1505 Cox Rd Cocoa FL 32926  
p: 800.515.9983 f: 321.631.1169  
e: [info@keltecweapons.com](mailto:info@keltecweapons.com)



[KELTECWEAPONS.COM](http://KELTECWEAPONS.COM)