

Table of Contents:

- P. 1 How do I connect my device to my WIFI Network?**
- P. 3 Is there an option in the app to connect to WIFI?**
- P. 5 My device connection has failed and is offline. How do I fix this?**
- P. 6 How do I share my device?**
- P. 6 Can I adjust my timer for different days?**
- P. 6 Quick Guide of Using Amazon Echo to Control Smart Devices**
- P. 11 Quick Guide of Using Google Home to Control Smart Devices**
- P. 17 How do I prevent voice control from failing when a third party is connected?**

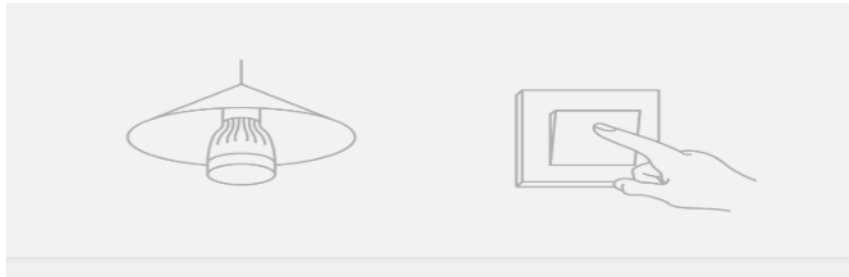
How do I connect my device to my WIFI Network?

There are two types of device network distribution, default mode (quick flash) and compatible mode (slow flash)

Default mode distribution network:

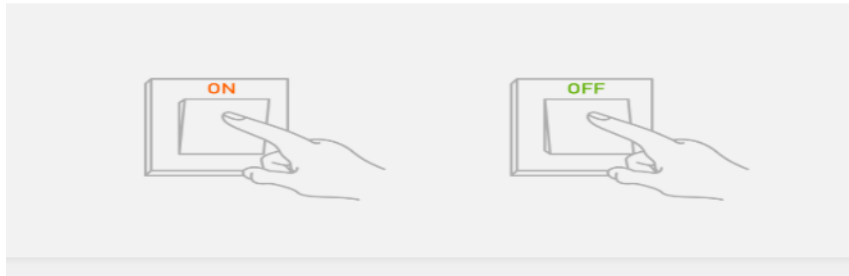
Step 1 / 3

Power on device.
Power off after 10s and then power on



Step 2 / 3

Turn on-off-on-off-on
(Keep time interval not too short, turn off after light is on)



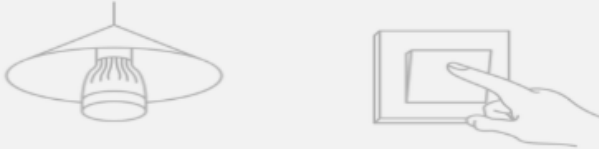
Step 3 / 3

Confirm light bulb is now rapidly flashing




Compatibility mode distribution network:

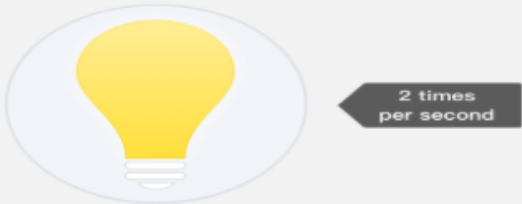
Step 1 / 4
Power on device.
Power off after 10s and then power on



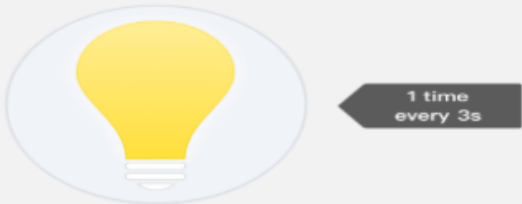
Step 2 / 4
Turn on-off-on-off-on
(Keep time interval not too short, turn off after light is on)



Step 3 / 4
Confirm light bulb is now rapidly flashing
Then take the next step.



Step 4 / 4
Operate again: Turn on-off-on-off-on
until light is slowly flashing



The compatibility mode is one step longer than the default mode. Repeat step 3 again until the indicator light flashes slowly.

Device network distribution method (resetting method):

1. The device automatically enters the quick flash status after it is powered on for the first time. If the device has an indicator light, the light flashes; if the device has no indicator lights, such as bulbs, it flashes itself. If the device does not flash quickly, you are advised to log in the app and click " " in the top right corner, select the corresponding device type, and click to enter "Add Device" page. The notice of "How to Set the Indicator Light to Quick Flash" is above the "Confirm Indicator Is Flashing Fast" button, you may click to see the details;
2. If the product has an On-Off button but no Reset button, such as a socket, please press and hold the button for 5 seconds until the indicator light flashes quickly;
3. If the device has no switches, such as a light, please connect it to a light socket and operate the switch "On/Off" for 3 times, keep it on until the light flashes quickly;
4. If the product has a Reset button, generally you can just press the Reset button until the indicator light flashes quickly.

(Note: Pairing supports 2.4G network. 5G network is temporarily unavailable.)

Please see the device manual for details.

In the compatible mode, please reset the device after the quick flash until the indicator light flashes slowly.

Is there an option in the app to connect to WIFI?

First: Register your account

Open App into the register/login interface. You can register by email or mobile number. Input the phone number or email address for getting verification code to register.

Second: Add your device

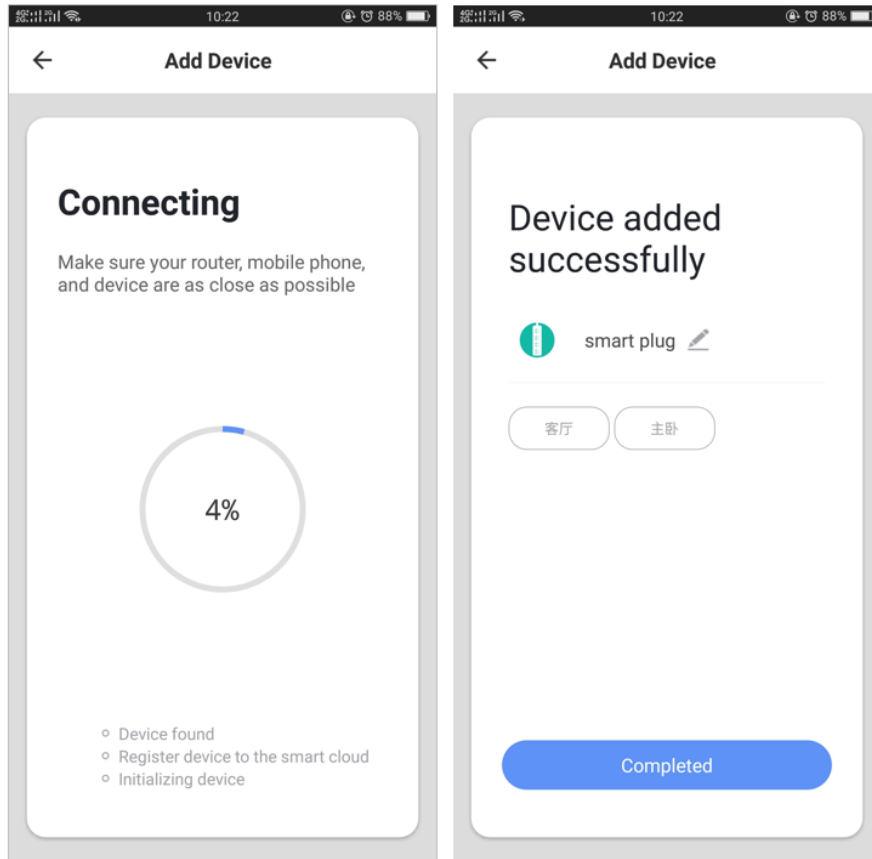
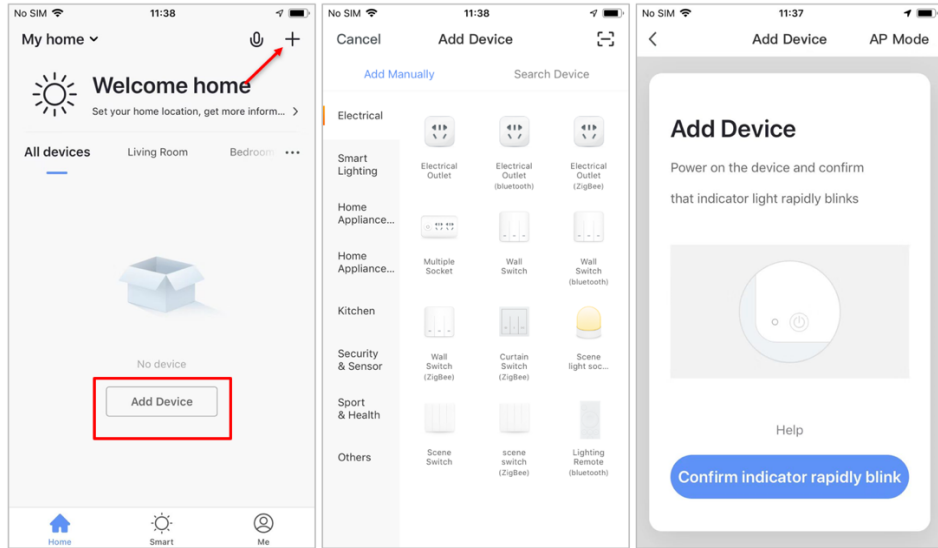
1. Power on your device.
2. Log into the App and select the + icon on the top right of the App to add device, select the correct device.

There are two config modes: EZ Mode and AP Mode

1. EZ Mode

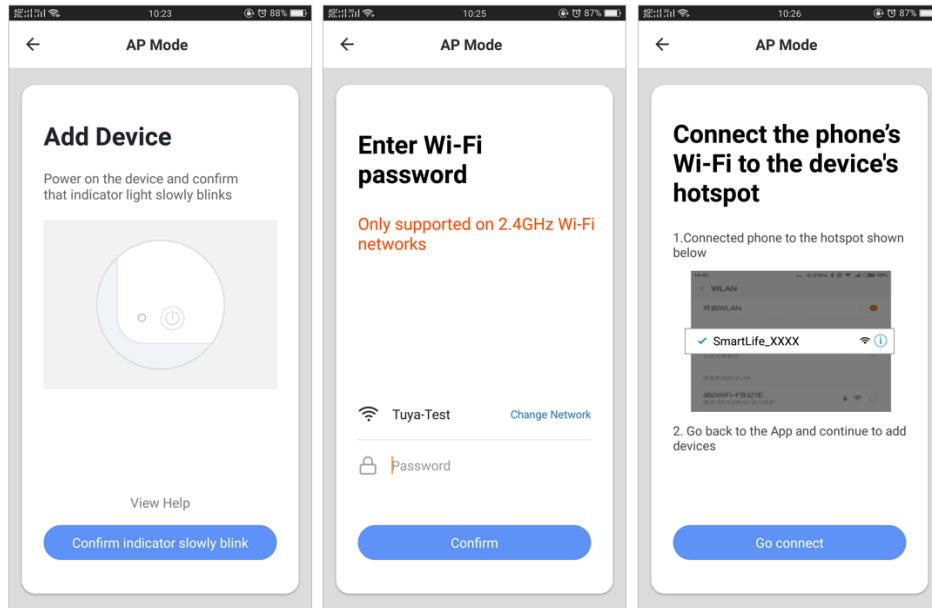
Ensure the indicator light flashing quickly (twice a second) which indicates that the device is in config mode which allows you to connect.

- Please refer to the operation instructions at the top of the "Confirm indicator rapidly blink" button about "Help"



2. AP Mode

Click the "AP Mode" in the upper right corner. After the indicator light flashes slowly, click the confirmation button on the page to connect to a 2.4G network. Then click "Go connect" to connect to the hotspot of the device "SmartLife_XXXX".



My device connection has failed and is offline. How do I fix this?

Please Note when adding a device:

1. Confirm device is powered on.
2. Confirm the device is under config mode.
3. Confirm that device, smartphone and router are as close to each other.
4. Make sure the network function of router and smartphone are unblocked.
5. Confirm the entered router password is correct.
6. Confirm adding device is under 2.4 WIFI channel. Enable the broadcast and not allow to hide WIFI.
7. Confirm that router's encryption method is WPA2-PSK and authentication type is AES, or both are set up as automatic.
8. If router's connected devices reach the amount limit. Please try to turn off some devices' WIFI function and configure again.
9. If router enables MAC address filter, please try removing the device from MAC filter list and make sure router is allowing device to be connected.

10. Make sure that the router has the DHCP service enabled. If it is not enabled, the address will be occupied.
11. If it still doesn't work, it may be that the router is not compatible with the device. It is recommended that you replace the router and try again.

How do I share my device?

1. You can enter the single device control page in the app, click ". . ." in the upper right corner to enter more functions, click "Shared devices" - "Add Sharing", enter the phone number of the other party, click Finish, you can put the device Share for family use;
2. Click "Me-"Home Management" in the app to enter the family that needs to be set up, click "Add members", add family and friends who need to share the device to the family, and share the devices in all the homes without having to The device is re-shared.

Note: The two methods of sharing devices require the other party also has the account of the APP.

3. The easiest way to share is to log in using a public account.

Can I adjust my timer for different days?

You can open the app, go to your device, click "Add Schedule" and select multiple workdays or weekends you need to set in the "Repeat" list.

Quick Guide of Using Amazon Echo to Control Smart Devices

1. What you need to get started

Before using Echo to control your smart devices, make sure you meet the following conditions:

- Stable Wi-Fi network which could access to Amazon server. (For mainland China users)
- An Echo device, including Echo, Echo Tap, or Echo Dot.
- An Amazon account (If you don't have an Amazon account, either Download the app in the Google Play Store or the App Store, or through www.amazon.com and register your account)
- Smart app and a related account.
- Smart devices.

2. Add devices in Smart Life app (Refer to App Instruction)

You can skip this part if you've already added some smart devices to your Smart Life account, and in the meantime name the devices' so they can be easily recognized by you.

2.1 Download app (Refer to App Instruction)

You can also search your app in either App Store or Google Play to install the app.

2.2 Register an account and sign in the app (Refer to App Instruction)

Open the app, tap "Register" to register an account, then sign in the app.

2.3 Add device and change device's name (Refer to App Instruction)

Sign in with the Smart Life account, add the device, then change device name to an easily recognized word or phrase, like "bedroom light".

3. Set up Amazon Echo and enable the Skill

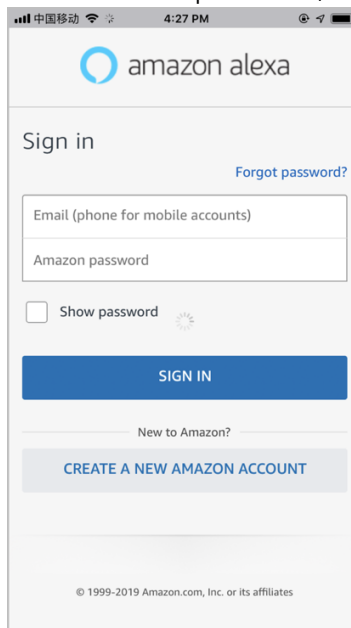
We suggest using web for configuration in mainland China since Alexa app is not available here.

- User can configure Echo through web or Alexa app.
- Web configuration link: <http://alexa.amazon.com/spa/index.html>.
- Search "Amazon Alexa" in App Store or Google Play to install the app.
- We take app configuration as an example. Configuration through web and app are basically the same.

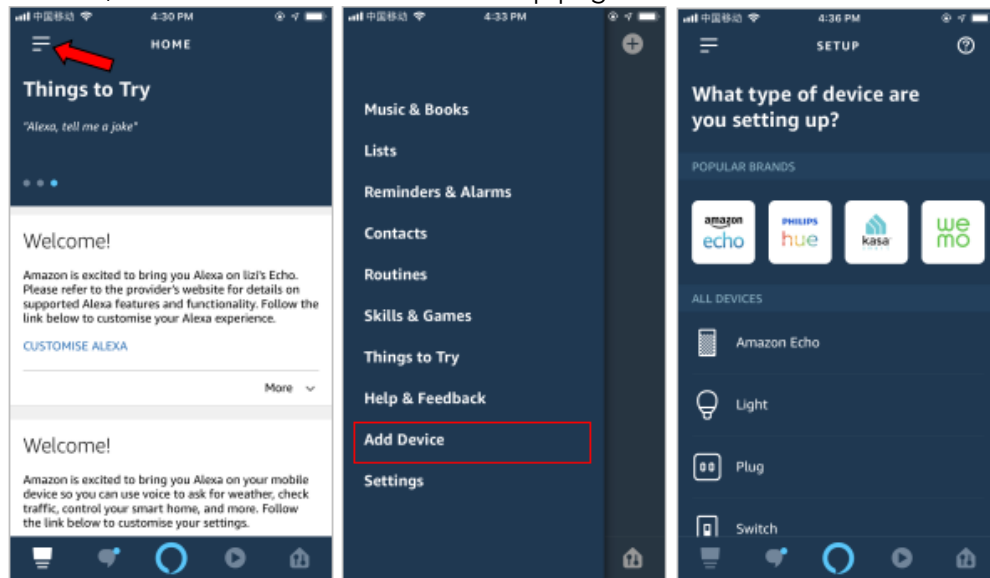
3.1 Set up Echo with Alexa app

You can skip this part if your Echo is already set up.

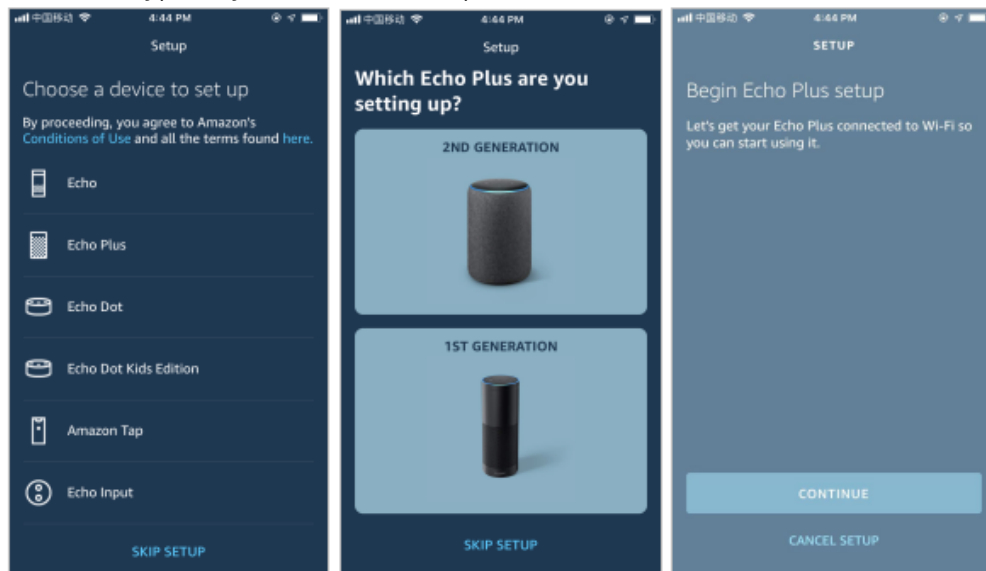
1. Make sure your Echo device is charged.
2. Make sure Echo is in a Wi-Fi network that can access Amazon services smoothly.
3. Open the Alexa app by tapping the app icon on your mobile device.
4. Type in your Amazon account and password, then tap "SIGN IN".



5. Tap the hamburger menu (3-line menu bar) on the top left corner, select "Add Device", Select Amazon Echo in the Set-up page

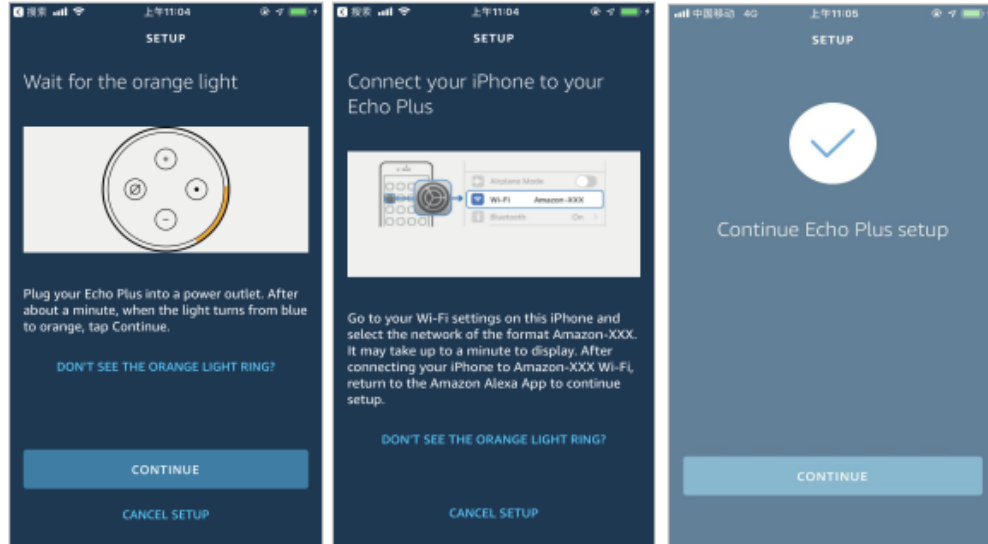


6. Select the type of your Echo, then tap "CONTINUE".



- Tap and hold the dot button on the top of your Echo device until the orange light shows up, then tap "CONTINUE".

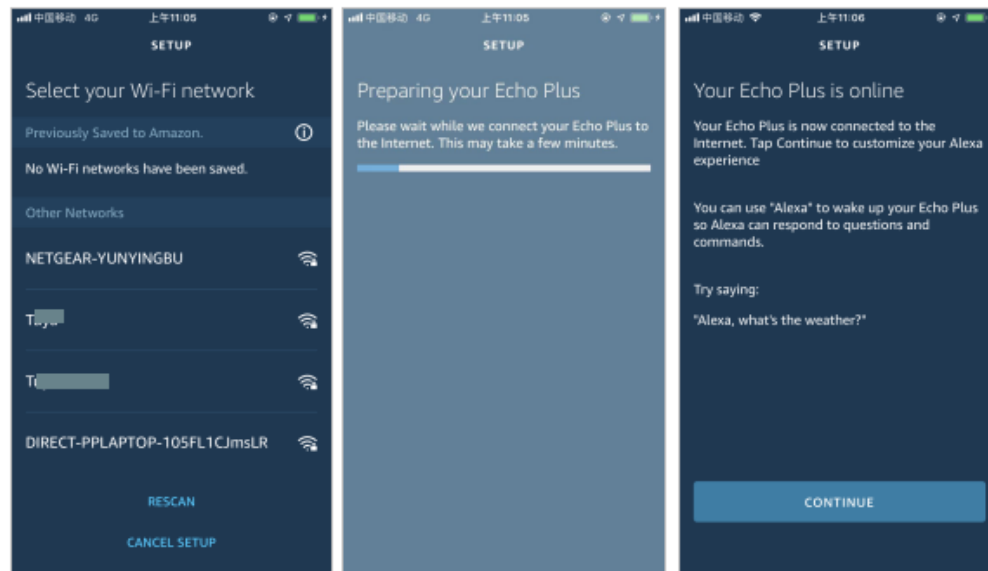
Make your mobile phone connected to the hot spot of echo, then tap "CONTINUE".



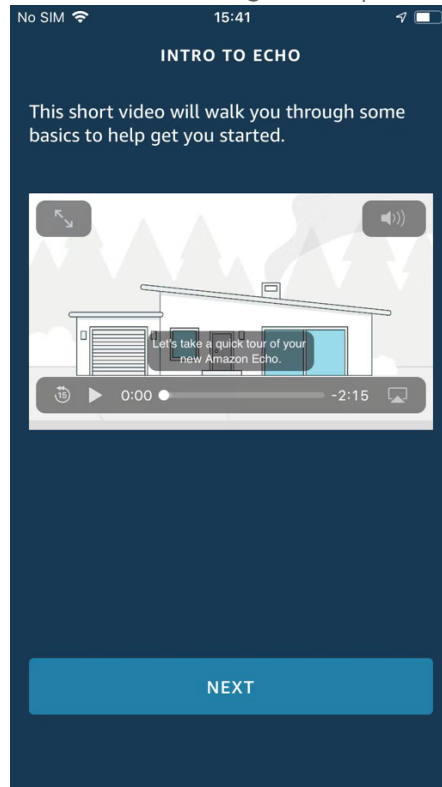
- Select a Wi-Fi network to let Echo have the access to the internet.

Type in the Wi-Fi password, then tap "CONNECT".

Echo may take several minutes to connect the network.



9. Tap "CONTINUE" when Echo is connected to the network.
After an introduction video, tap "NEXT" to finish the setup.
At this point, the Echo configuration process ends.



3.2 Link the account of app to Alexa

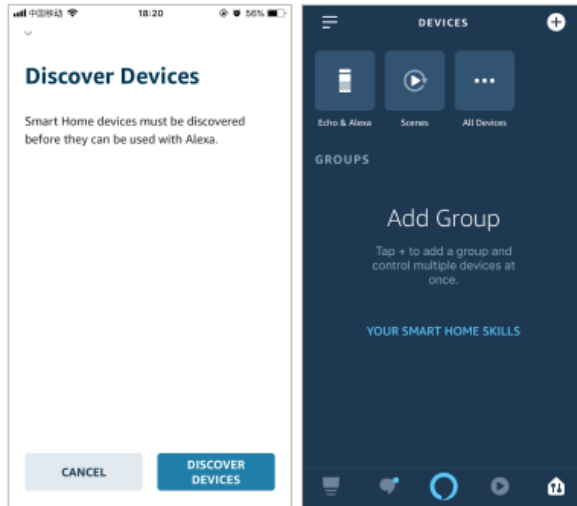
Tap "Skills & Games" in the hamburger menu, search your skill, and then click "enable" to enable the Skill.

4. Control your smart devices through Echo

4.1 Discover devices

Echo needs to discover your smart devices before it controls them. After the skill binding is successful, the page as figure1 will appear automatically. Click "DISCOVER DEVICES" to discover the device, or you can say "Alexa, discover devices" to Echo. Echo will discover devices which have already been added in the app.

You can also tap "DISCOVER DEVICES" to discover the smart devices. Discovered devices will be shown in the list.



Note: every time you change the device's name on the app, Echo must re-discover before you control them.

4.2 Control devices by voice commands

Now you can control your smart devices through Echo. You can use the following commands to control your devices (e.g., bedroom light):

- Alexa, turn on/off bedroom light.
- Alexa, set bedroom light to 50 percent.
- Alexa, brighten/dim bedroom light.
- Alexa, set bedroom light to green.
- Alexa, set bedroom light to warm white.
- Alexa, set air conditioner to 24°C.

Quick Guide of Using Google Home to Control Smart Devices

1. What you need to get started

Before using Google Home to control your devices, make sure you meet the following conditions.

- A Google Home device, or Android phone with Google Assistant.
- Latest Google Home app.
- Latest Google app (Android only)
- A Google account.
- The device display language must be set to English US.
- Smart Life app and a related account.
- Smart devices.

2. Add devices in Smart Life app (Refer to App Instruction)

You can skip this part if you've already added some smart devices to your Smart Life account, and in the meantime name the devices' so they can be easily recognized by you.

2.1 Download Smart Life app (Refer to App Instruction)

You can scan the QR code below to download the Smart Life app:



You can also search "Smart Life" in either App Store or Google Play to install the app.

Note: "smart life" app is just an app name (for example), you can download your app.

2.2 Register a Smart life account and sign in the app (Refer to App Instruction)

Open the Smart Life app, tap "Register" to register an account, then sign in the app.

2.3 Add device and change device's name (Refer to App Instruction)

Sign in with the Smart Life account, add the device, then change device name to an easily recognized word or phrase, like "bedroom light".

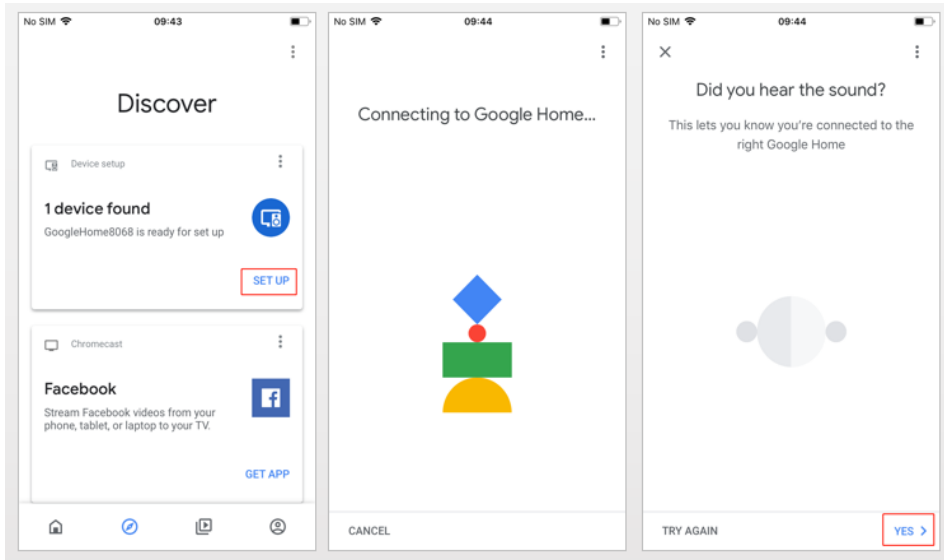
3. Set up Google Home and configure in Home Control

Configuration needs Google Home app. Search "Google Home" in App Store or Google Play to install the app.

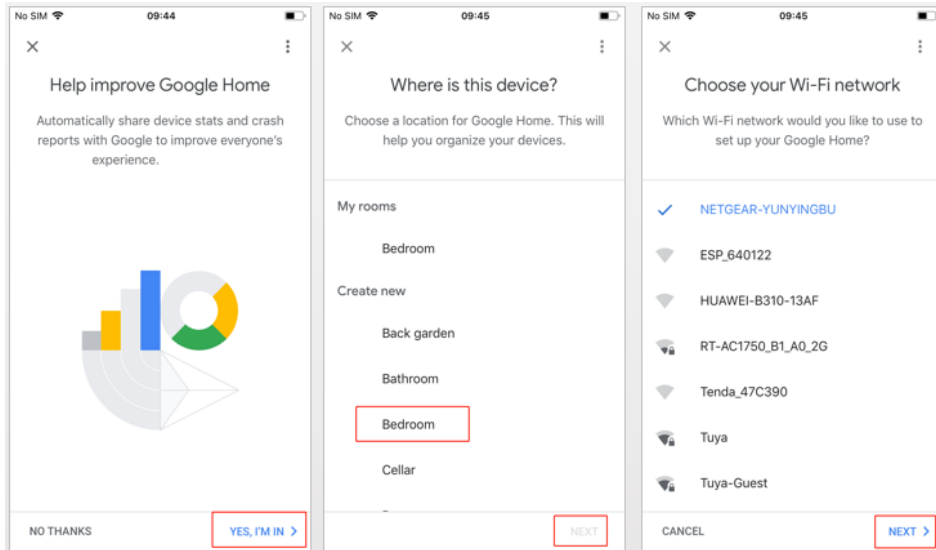
3.1 Set up Google Home with Google Home app

You can skip this part if your Google Home is already set up.

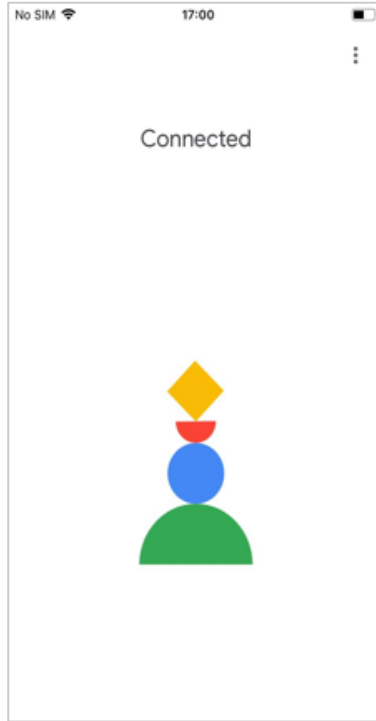
1. Make sure your Google Home is energized and four colored lights on the top are on which means that it is in a state of waiting for a connection.
2. Make sure Google Home is in a Wi-Fi network that has smooth access to Google services.
3. Open the Google Home app, the device will automatically appear in the "Discover" page.
4. Click "SET UP" to start connecting to Google speakers and click "YES" after you hear the voice prompts.



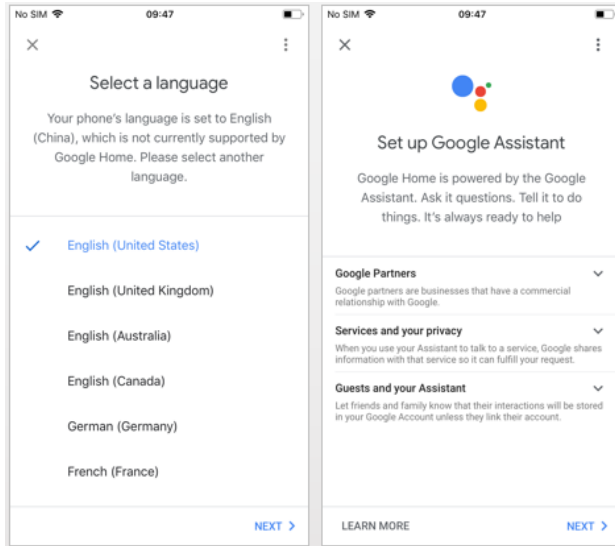
5. Help improve Google Home and click "YES, I'M IN" in the lower right corner.
6. Choose a location for Google Home, for example, choose "bedroom".
7. Choose your WI-FI network to set up your Google Home.



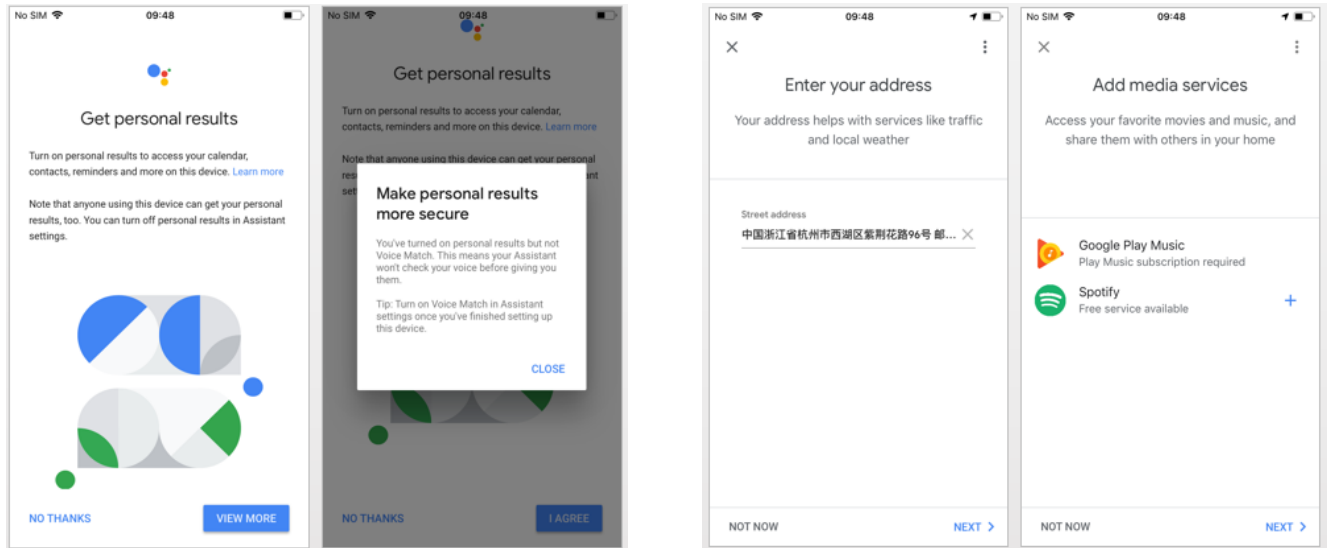
8. After successfully connected, the APP page will display as follows.



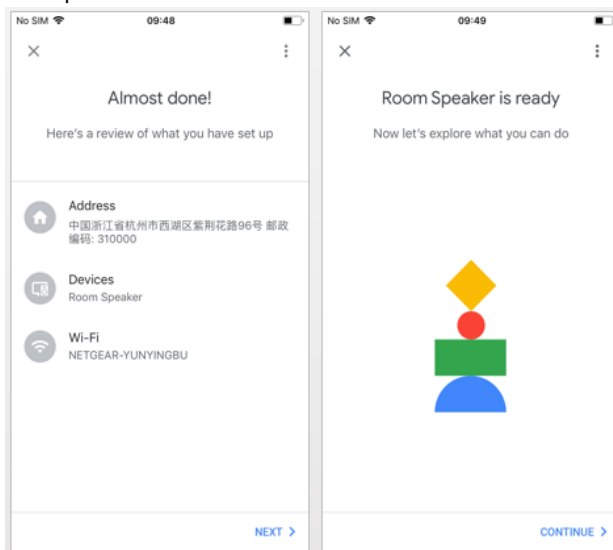
9. Select a language, then click "Next".
10. Waiting for the system to set up your Google Assistant automatically, click "Next".



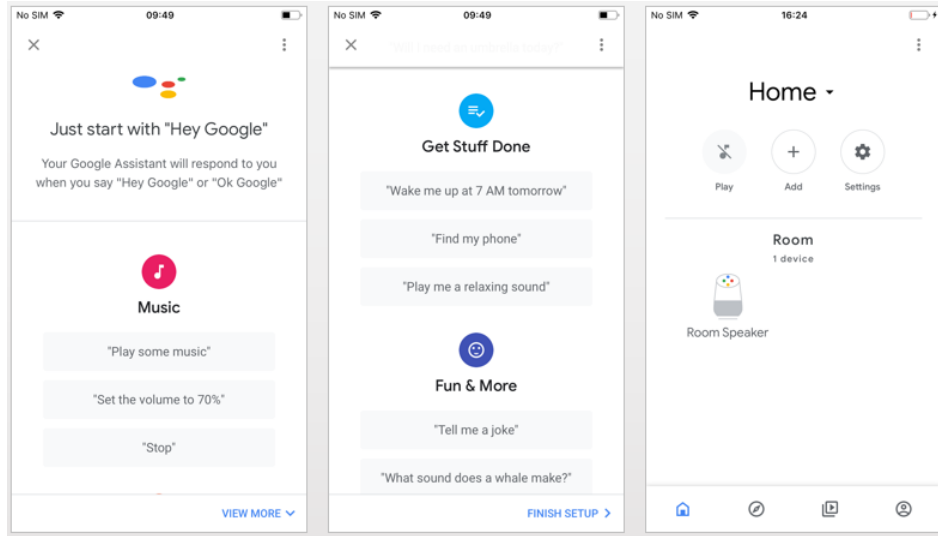
11. Click "VIEW MORE" to pop up a dialog box, and then click "I AGREE" to allow Google Home to get your calendar, flight itinerary, and more to provide personalized customization. Then set your geographic location, select the music service you need, and click on "NEXT". If you don't need it, you can click "Not Now" to skip.



12. Then comes a review of what you have done. After clicking "Next" the page will display "Google Home is ready". At this point, Google Home's setup is complete.



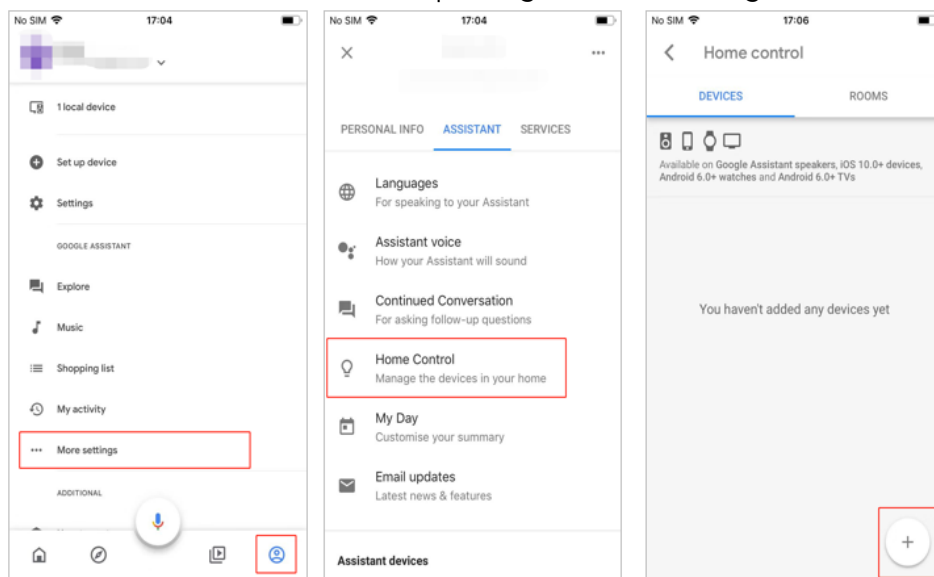
13. This step is the voice control tutorial, click "FINISH SET UP". Then the speaker that have been connected successfully will display in the "Home" page.



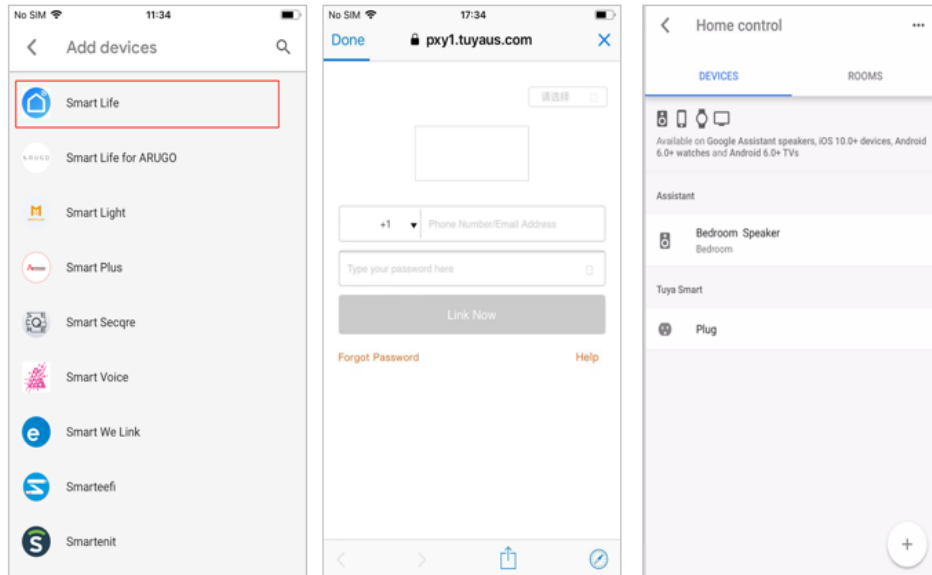
3.2 Link Smart Life account in Home Control

ATTENTION: Due to the Google Home app's known bug, you could only use one Google account to control "Home Control Action". If you sign in Google Home app with several Google accounts, only the first Google account you signed in can be used for "Home Control".

1. On the homepage of Google Home app, click the button in the lower right corner, select "MORE SETTING", select "Home Control" under the list of "ASSISTANT", and then click the plus sign in the lower right corner.



- Find "Smart Life " in the list. In the new window, select your Smart Life account's region, type your Smart Life account and password, then tap "Link Now". After you assign rooms for devices, your devices will be listed in the Home Control page.



4. Control your smart devices through Google Home

Now you can control your smart devices through Google Home. Take bedroom light as the example, the supported voice commands are as below:

- Ok Google, turn on/off bedroom light.
- Ok Google, set bedroom light to 50 percent.
- Ok Google, brighten bedroom light.
- Ok Google, dim bedroom light.
- Ok Google, set bedroom light to red.

How do I prevent voice control from failing when a third party is connected?

You are advised to take the following steps to solve the problem:

- Make sure the device supports this third-party control. You can click the "..." in the upper right corner of the device control page to enter the "Details of device" page, then you can see the supported third parties of the device.
- Make sure the device has been connected to the WAN(Internet).
 Our WIFI device has two control modes: LAN control of WIFI and Mobile cellular data

(or another network). No matter whether the device is online or not, the app can control the device once both of them run on the same LAN (the device and app are connected to the same WIFI router in your house). So, you are advised to turn off WIFI of your mobile and turn on cellular data, then refresh the device list to see whether the device is still online.

- 3.** If the device is offline, check whether your WIFI works normally. If no, troubleshoot the router.
- 4.** If your WIFI works normally and the device is offline (only for the case it has been normally connected previously, and the router's name and account information has not been changed), you are advised to shut down and reboot your device , and check whether the device gets online after about 30 secs.
- 5.** We recommend that you try to rediscover the device/refresh device list to see if the device appears in the device list.
- 6.** If the device is still offline, you are advised to delete the device and re-configure the network. Then, in the third-party access app (such as Alexa and Google Home), refresh the device list to show the device. The device can be controlled after it is shown.

If the problem persists after you have tried above methods, please offer your device ID and app account for us to check the problem.