



# TR320

**Dual Lens**  
22X Auto Tracking Camera



# Professional Broadcasting Made Easy

The TR320 is the easy and affordable solution for any amateur to produce professional results. Record or stream speeches, lectures, higher education courses, and essential employee training in HD 1080p video quality without a professional videographer. The TR320 offers cutting edge adaptive target tracking with a powerful PTZ camera, 22X optical zoom, and a secondary 120° POV panoramic camera to meet the needs of educational organizations, governmental institutions, houses of worship and enterprises.



3 Auto Tracking Modes



22X Optical Zoom Camera



120° FOV



HDMI/IP/3G-SDI Output



3-Year Warranty



IP Streaming

3 Auto Tracking Modes provide the ultimate flexibility to capture your target

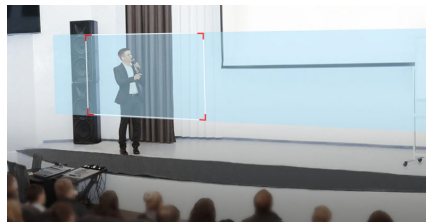
## Wide Area Tracking

- Track your target everywhere
- Presenters are continuously tracked, even off-stage
- Target will be tracked even if he/she is obscured by others



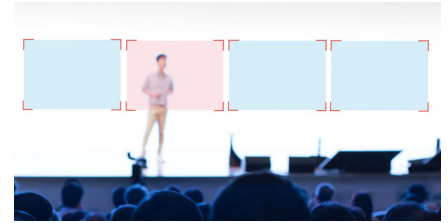
## Stage Tracking

- Hands-free video streaming and recording
- Fluidly track your target with Effective Zone settings
- Up to 8 blocking zones to capture professional video



## Segment Tracking

- Enhance the capture of content on multiple displays
- Create 4 Content Zones for immediate recognition and tracking
- Perfectly capture the content on display rather than your presenter



### Compatible Software



## Product Specifications

<b>PTZ Camera</b>	Image Sensor	1/2.8" 60fps low lux CMOS sensor
	Effective Picture Elements	2 megapixels
	Output Resolution	Auto, 1080p/60, 1080p/50, 1080i/60, 1080i/50, 1080p/30, 720p/60
	Optical Zoom	22X
	Digital Zoom	12X
	Lens Focal Length	f = 4.3mm (Wide) ~ 94.6mm (Tele)
	Iris	F = 1.6 (Wide) ~ 4.3 (Tele)
	View of Angle	DFOV = 76° (Wide) ~ 5° (Tele)
	Minimum Illumination	IRE50:0.47 lux (60fps) ; 0.23 lux (30fps)
	Preset Number	10 (IR remote), 255 (RS232)
	Minimum Working Distance	1.2m at Tele-End (30X) ; 0.1m at Wide-End (1X)
	White Balance	Auto / Manual (2500 - 10000)
	Gain	Auto / Manual
	Electronic Shutter	1/5 s to 1/32,000 s
	BLC (Back Light Compensation)	Off / On
	Exposure	Auto / Shutter Priority / IRIS Priority / Manual
	Noise Reduction	Off / Low / Medium / High
	Frequency	Auto / 50Hz / 60Hz
	S/N Ratio	> 50db
	Horizontal Resolution	Center : 800 TV Lines ; Corner : 600 TV Lines
<b>Pan Tilt Parameter</b>	Pan Rotation	-175° (Left) +175° (Right)
	Tilt Rotation	-30° (Down) +90° (Up)
	Pan Control Speed	2° ~ 50°/Sec
	Tilt Control Speed	2° ~ 50°/Sec
	Preset Speed	Pan : 160°/Sec, Tilt : 160°/Sec
<b>Panoramic Camera (Full View)</b>	Image Sensor	1/2.8" 60fps low lux CMOS sensor
	Effective Picture Elements	2 megapixels
	Output Resolution	Auto, 1080p/60, 1080p/30, 720p/60
	Lens Focal Length	2.12mm
	White Balance	Auto
	FOV	DFOV = 120°, HFOV = 110°, VFOV = 74.5°

<b>Interface / Streaming / Protocol</b>	Video Output	3G-SDI*2, HDMI*1, IP (RJ45)	
	Video Output Capability	up to 1080p/60	
	Remote Control	RS232 (via optional DB9 to DIN6 adapter), IP (RJ45)	
	Baud Rate	115200 / 9600 / 4800 / 2400 bps	
	Network Interface	10 / 100 / 1000Base-T, support Wake-on-LAN	
	Network Video Compress Format	H.264	
	Network Protocol	RTSP, RTMP, ONVIF	
	IP Video Streaming	Dual video streaming (PTZ and panoramic view)	
	Control Protocol	VISCA / Pelco-D / Pelco-P	
	Power	DC12V, power adapter	
	<b>System</b>	Remote IR	IR sensor
		Audio	PCM, AAC-LC, G.711
		LED	Power (Blue-open, Red-close)
		Security	Kensington slot
		Infrared Remote	Receiver on front of camera
Power Adapter		AC110V-AC220V to DC12V/5A	
Consumption		24 W (Max)	
Operating Temperature		0°C ~ +40°C	
Operation Humidity		20% ~ 80%	
Storage Temperature		-20°C ~ +60°C	
Storage Humidity	20% ~ 95%		
Dimensions	L = 201mm, W = 210mm, H = 176mm		
Weight	1.75kg		
Application	Indoor		
Accessory	Remote control, 12V/5A power adapter, DB9 to DIN6 adapter, user manual		
Software Tools	AVer PTZ Management		
<b>Warranty</b>	Camera	3 Years with AVerCare	
	Accessories	1 Year	
<b>Ordering Info</b>	Part Number	PAVPTR320	

## Hardware Specifications



AVer Information Inc. Americas  
668 Mission Court, Fremont, CA 94539  
Toll free 1.877.528.7824 T 408.263.3828 F 408.263.8132

©2019 AVer Information Inc. All rights reserved.  
All brands and logos are trademarks of their respective companies. Specifications subject to change without notice

pro.averusa.com