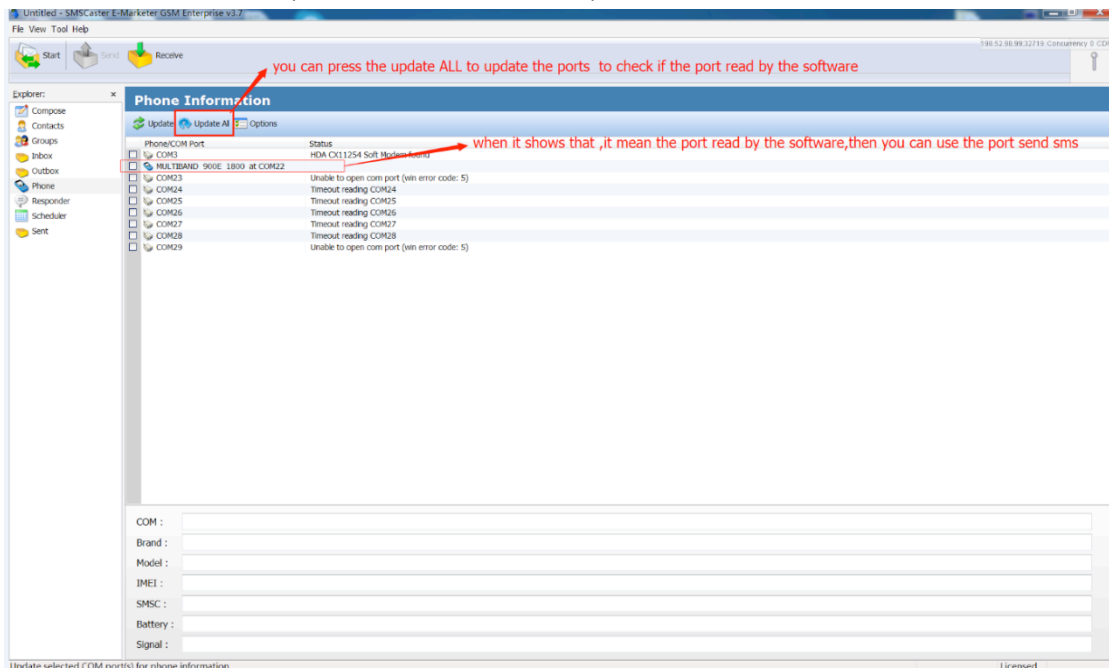
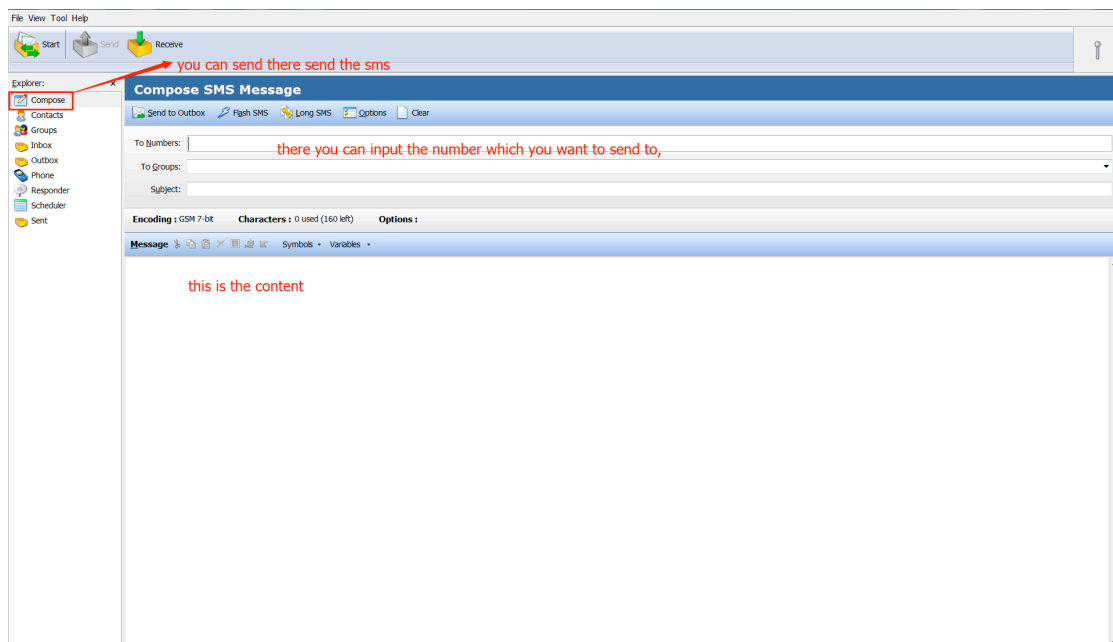


How To Use SmsCaster

1. Open the sms caster, click the Phone, then update All, then you can check how many ports can work, if some ports not shows proper, then you should check the sim cards or change another sim cards, when you change sim cards, you should shutdown the module, when insert sim cards, then start it .

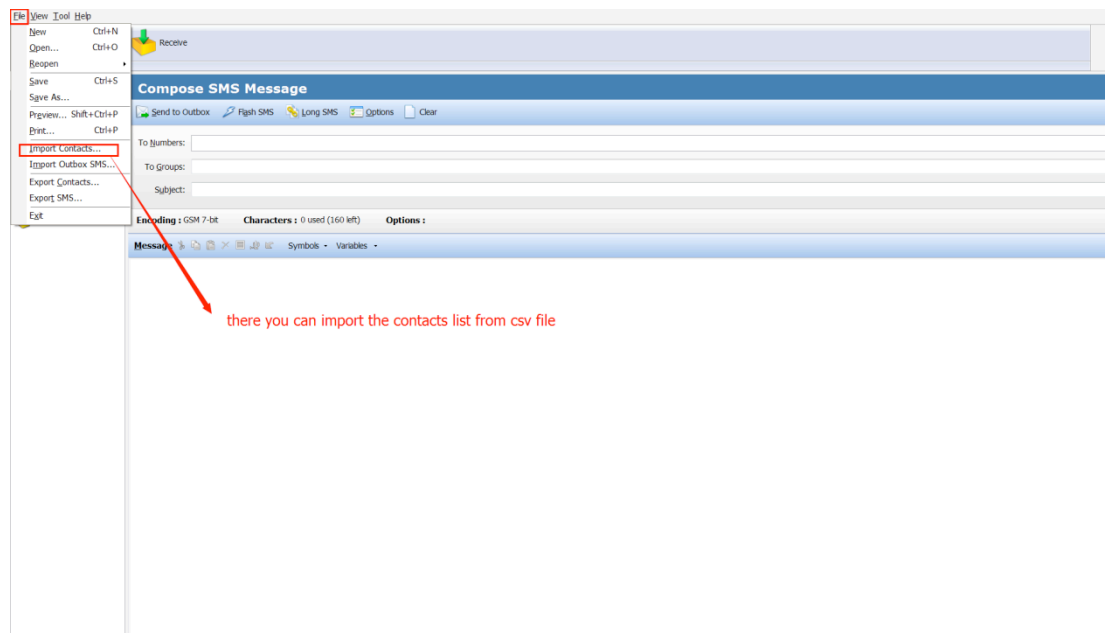


2. compose for send sms ,you can input receiver number in To Numbers if you just want to send few numbers, then input the content, when you finish, then press Send to Outbox, the sms will be sent to Outbox, press the Outbox ,then you can see the detail sms list, then press the Send, they will be sent out(you should firstly choose the ports which you want to send sms).



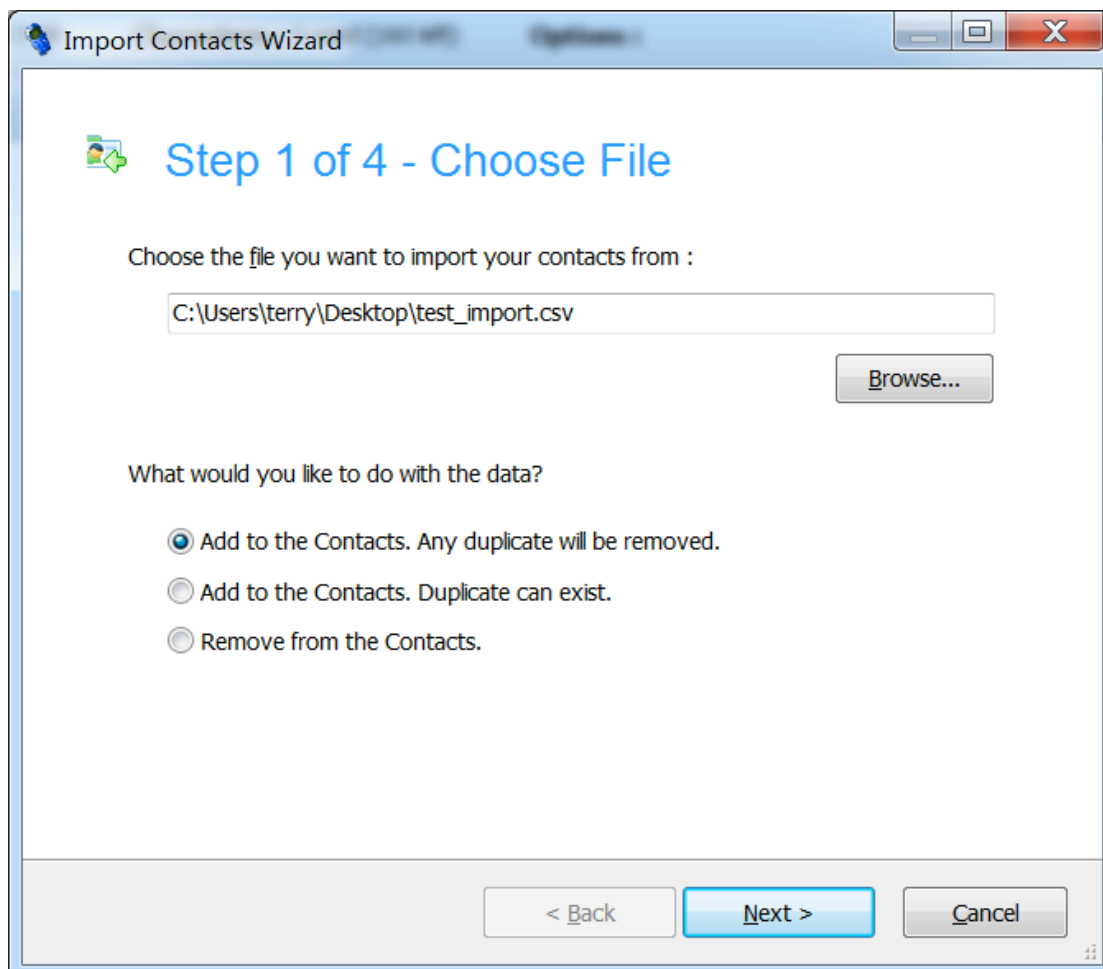
How To Use SmsCaster

3. when there are lots of contact, then you can import the list from the CSV file, File>Import Contacts



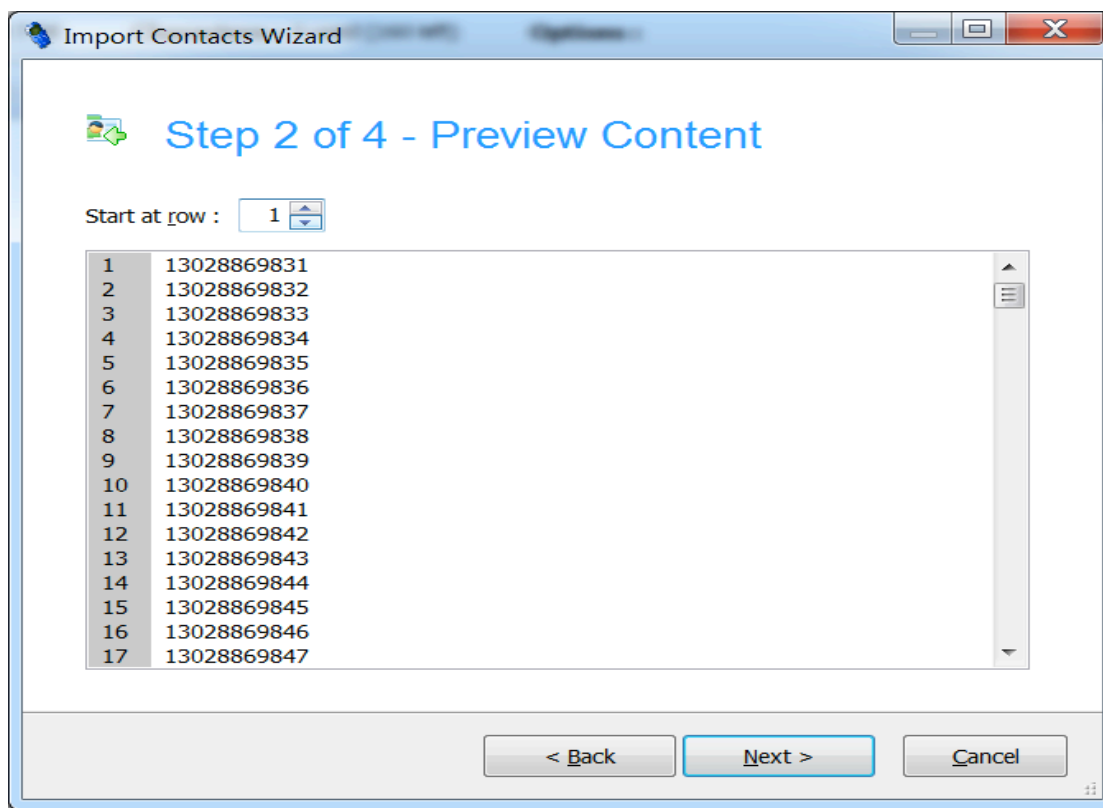
It will show the Import Contacts Wizard, press Browse to choose the file which you want to import, then Next

How To Use SmsCaster



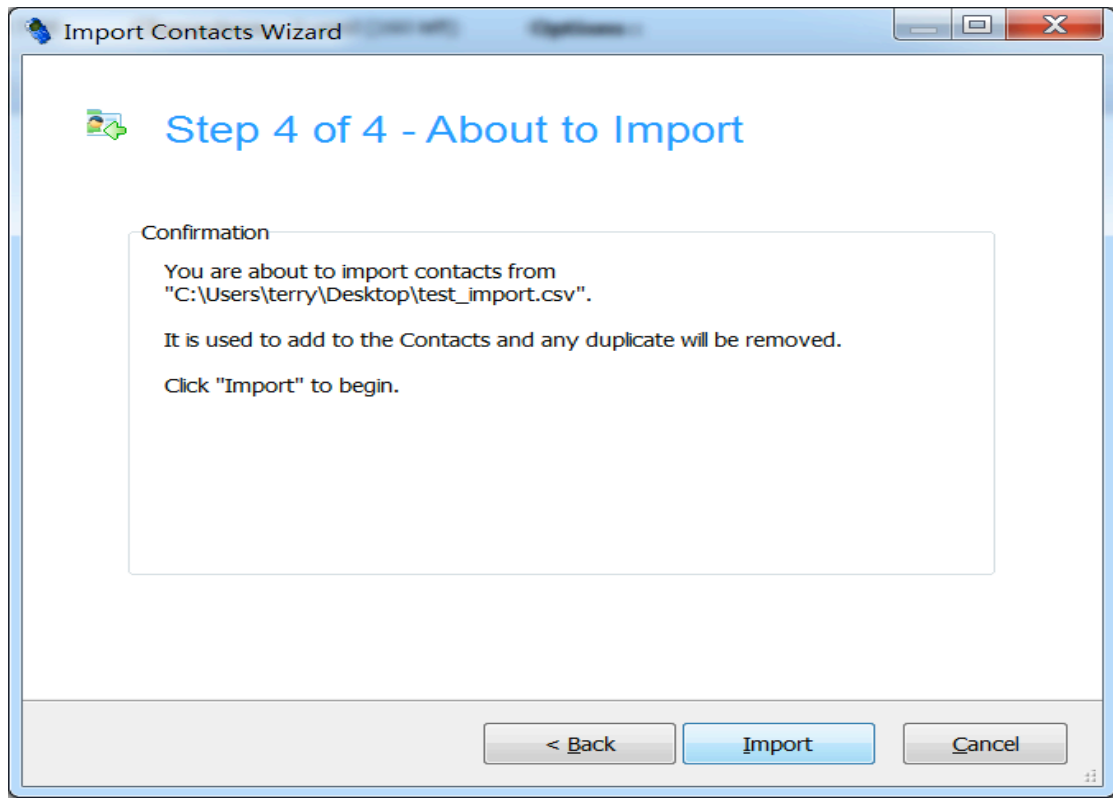
It show you which row you want to start, then Next:

How To Use SmsCaster

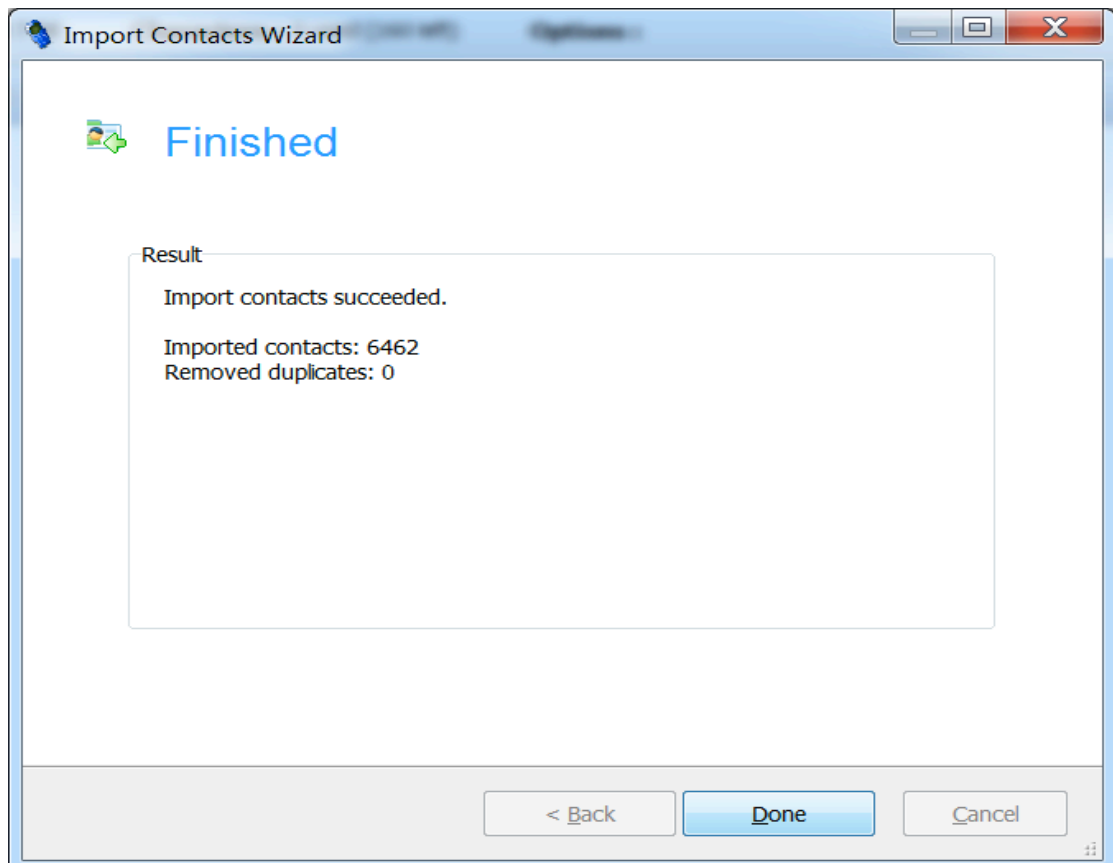


Then it will show the Arrange Fields and Columns. then Next:

How To Use SmsCaster

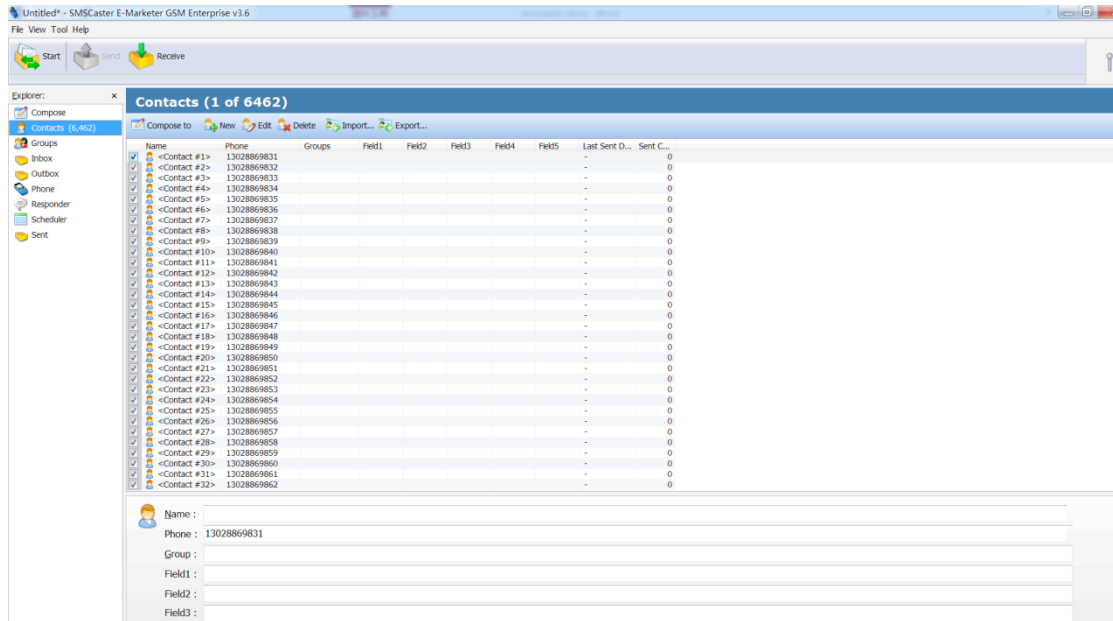


Import contacts succeeded, and show you how many contacts imported, Done

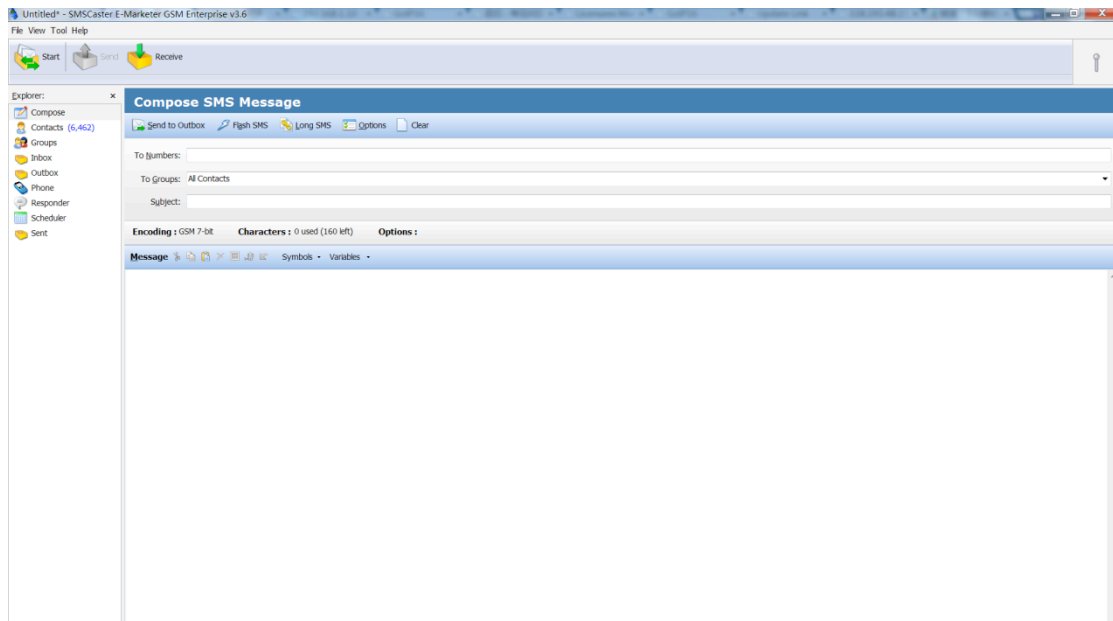


How To Use SmsCaster

You can see the contact list if you import succeed.

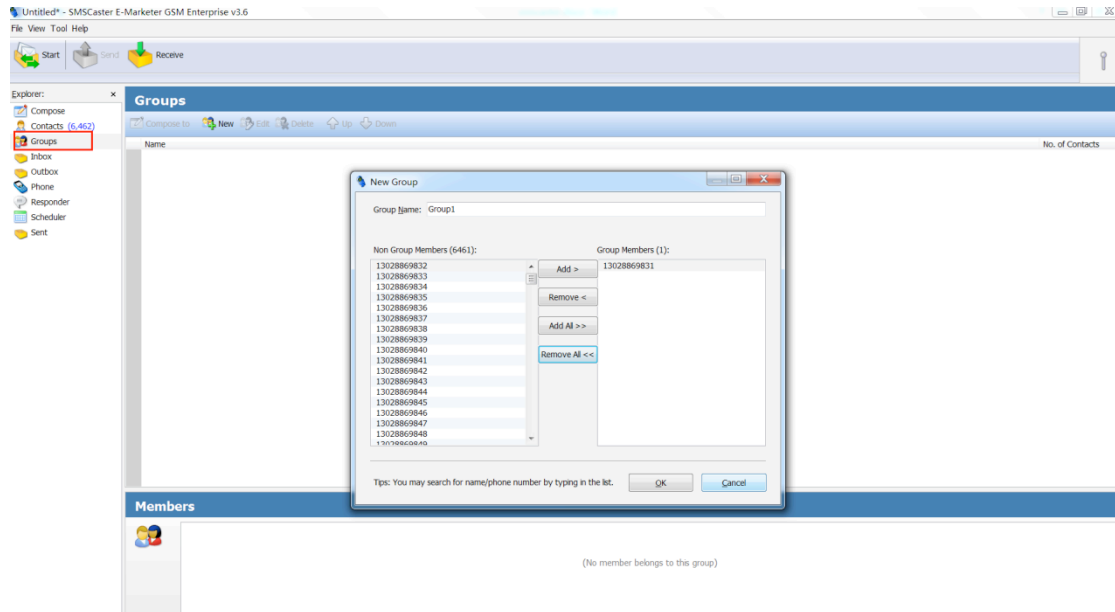


If you want send same sms to all the contact, you can select All Contacts in To Group. then input the contact(you should choose the port which you want to send sms firstly before you send sms).

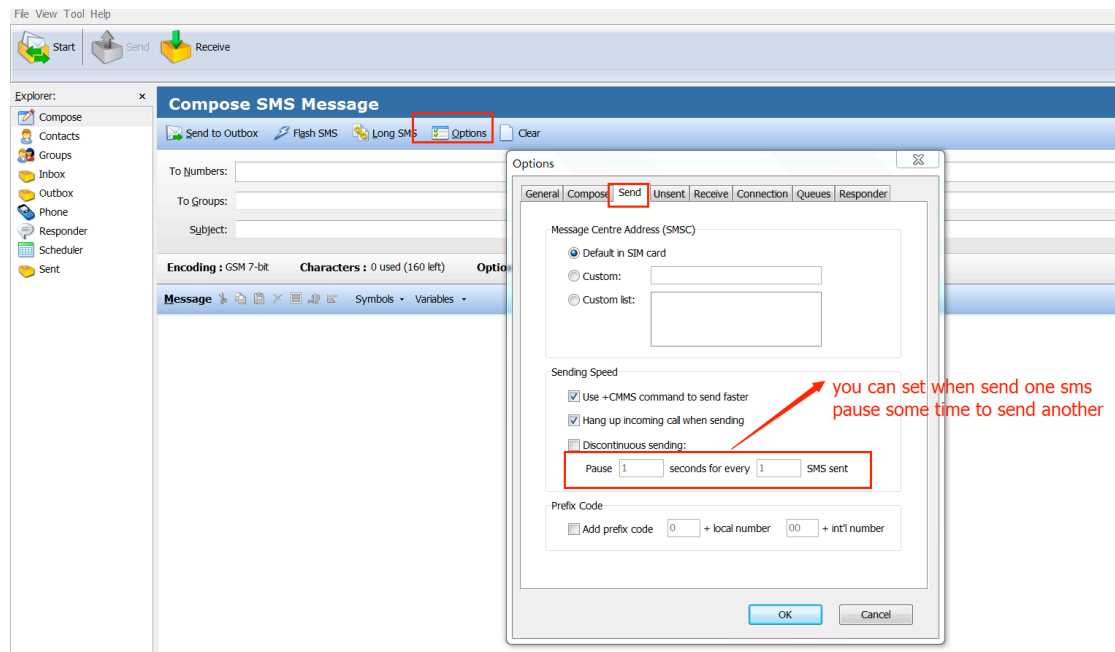


And you can set the group, press Group>Edit. then you can see it ,you can add the number to the new group from the number which you import contacts list.

How To Use SmsCaster

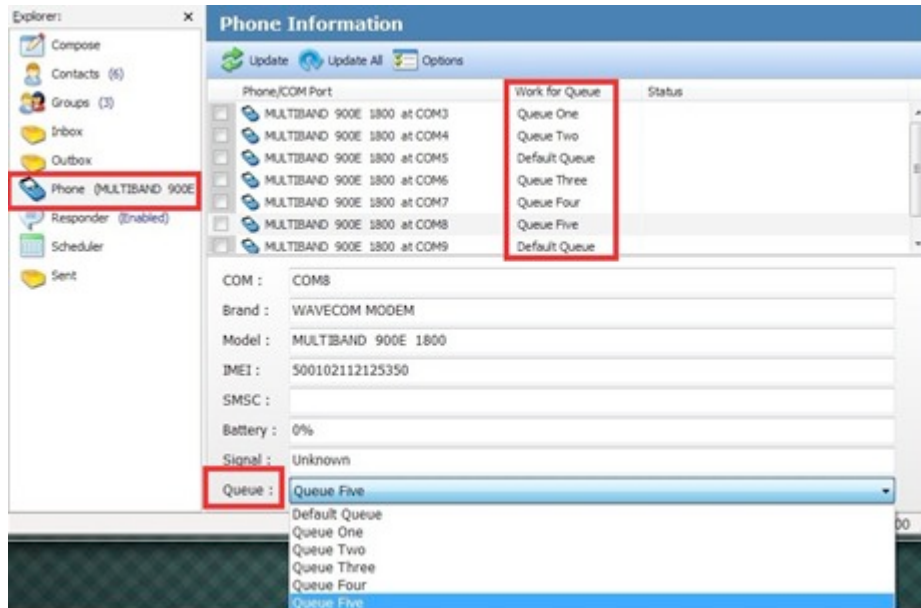


You can set pause time when one sms send



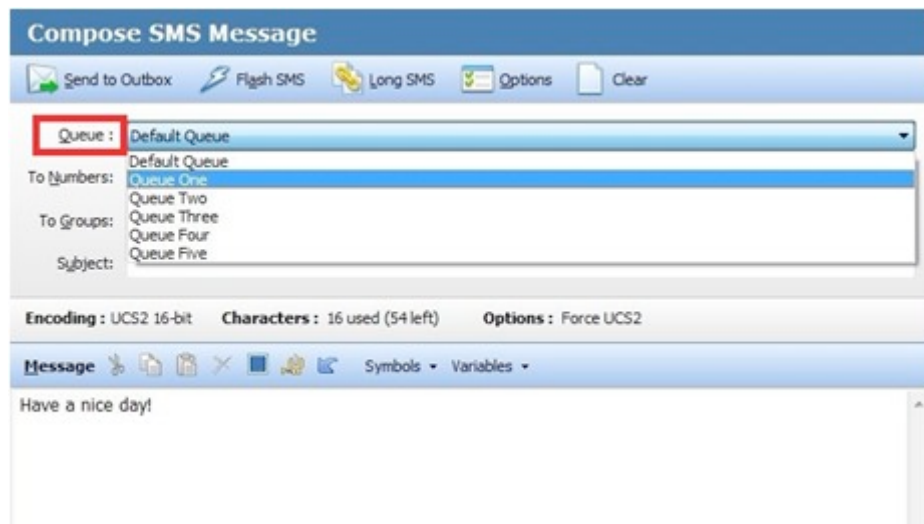
Make sure the GSM Modem have been connected to computer correctly, if that , all the ports can be found in SMS Caster, and you can set each port (SIM card) as a designated queue or default.

How To Use SmsCaster



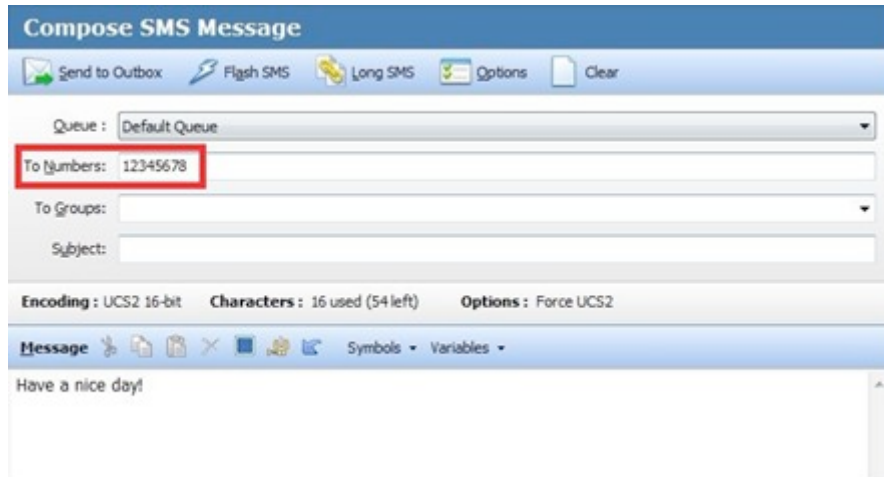
When you finish all these Settings, you can send text messages as your will:

- 1) Use a designated card send message to a designated group:



- 2) Use a designated card send message to a designated number:

How To Use SmsCaster



Compose SMS Message

Send to Outbox | Flash SMS | Long SMS | Options | Clear

Queue: Default Queue

To Numbers: 12345678

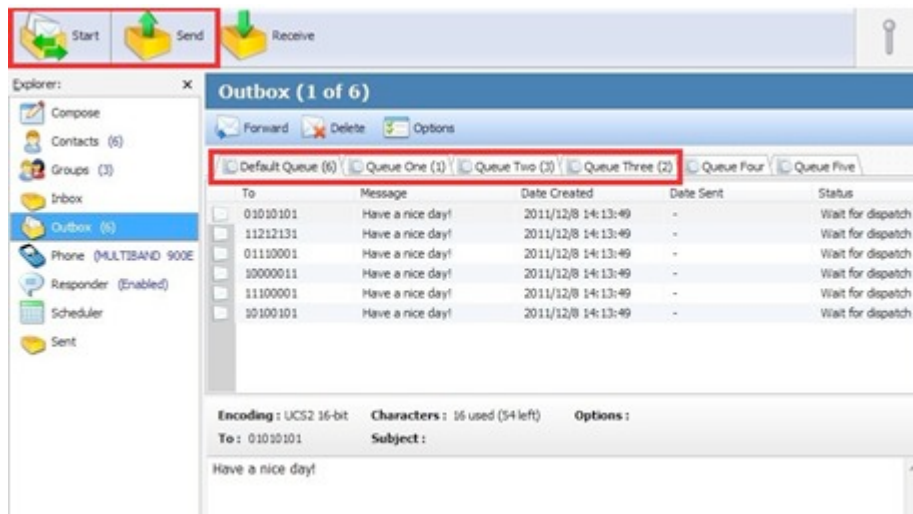
To Groups:

Subject:

Encoding: UCS2 16-bit | Characters: 16 used (54 left) | Options: Force UCS2

Message: Have a nice day!

You can find all the messages which will be sent by different queues (SIM cards) in outbox:



Start | Send | Receive

Explorer: Compose, Contacts (6), Groups (3), Inbox, **Outbox (6)**, Phone (MULTIBAND 900E), Responder (Enabled), Scheduler, Sent

Outbox (1 of 6)

Forward | Delete | Options

Default Queue (6) | Queue One (1) | Queue Two (3) | **Queue Three (2)** | Queue Four | Queue Five

To	Message	Date Created	Date Sent	Status
01010101	Have a nice day!	2011/12/8 14:13:49	-	Wait for dispatch
11212131	Have a nice day!	2011/12/8 14:13:49	-	Wait for dispatch
01110001	Have a nice day!	2011/12/8 14:13:49	-	Wait for dispatch
30000011	Have a nice day!	2011/12/8 14:13:49	-	Wait for dispatch
11100001	Have a nice day!	2011/12/8 14:13:49	-	Wait for dispatch
10100101	Have a nice day!	2011/12/8 14:13:49	-	Wait for dispatch

Encoding: UCS2 16-bit | Characters: 16 used (54 left) | Options:

To: 01010101 | Subject:

Have a nice day!