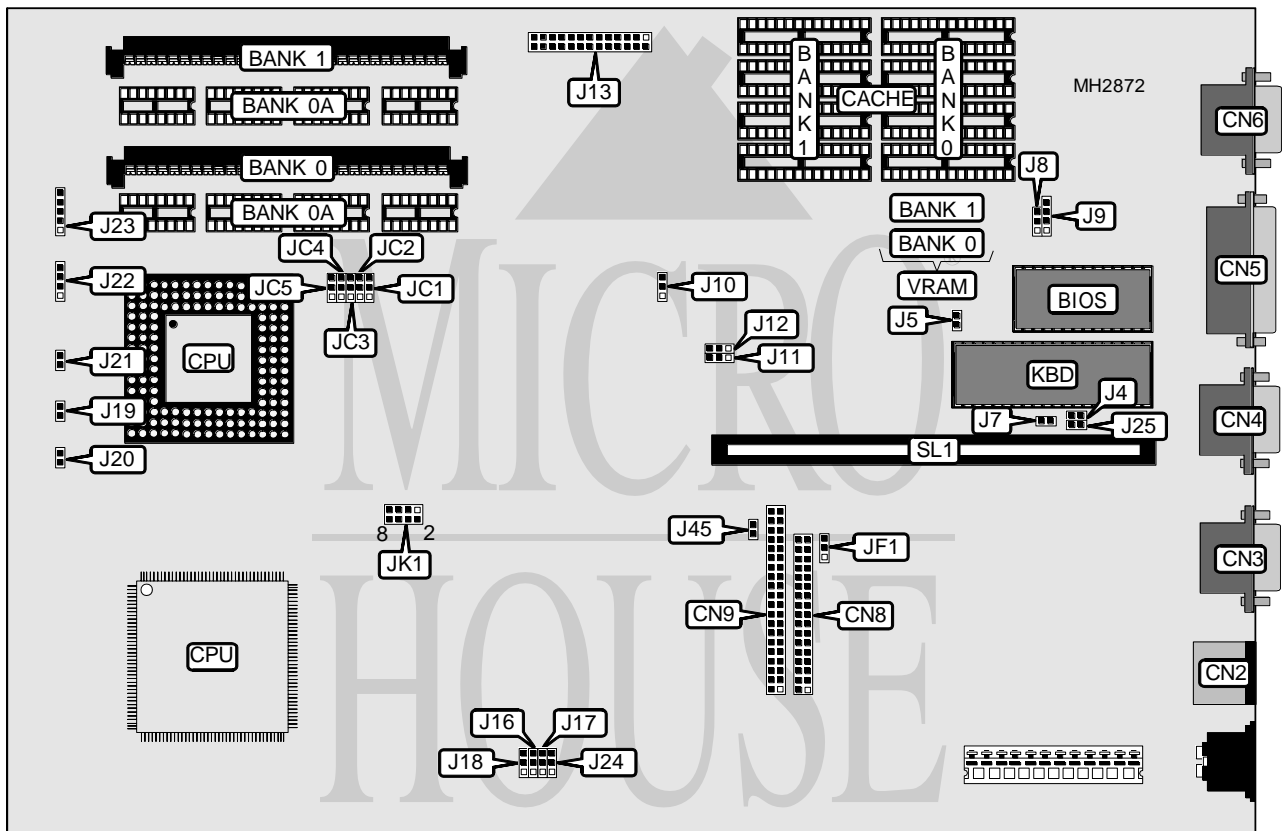


# FIRST INTERNATIONAL COMPUTER, INC.

## 486-JAL REV. B

<b>Processor</b>	80486SX/80487SX/80486DX/80486DX2
<b>Processor Speed</b>	25/33/50(internal)/66(internal)MHz
<b>Chip Set</b>	Via
<b>Max. Onboard DRAM</b>	32MB
<b>Cache</b>	64/128/256KB
<b>BIOS</b>	AMI
<b>Dimensions</b>	330mm x 218mm
<b>I/O Options</b>	PS/2 mouse port, parallel port, serial ports (2), VGA port, VGA feature connector, floppy drive interface, IDE interface, riser slot
<b>NPU Options</b>	None



CONNECTIONS			
Purpose	Location	Purpose	Location
PS/2 mouse port	CN2	VGA feature connector	J13
Serial port 1	CN3	Turbo switch	J19
Serial port 2	CN4	Turbo LED	J20
Parallel port	CN5	Reset switch	J21
VGA port	CN6	Speaker	J22
Floppy drive interface	CN8	Power LED & keylock	J23
IDE interface	CN9	IDE interface LED	J45
External battery	J9	Riser Card	SL1

Continued on next page. . .

**FIRST INTERNATIONAL COMPUTER, INC.**  
**486-JAL REV. B**

... continued from previous page

USER CONFIGURABLE SETTINGS		
Function	Jumper	Position
í Monitor type select monochrome/EGA/VGA	J4	Open
Monitor type select color	J4	Closed
í CMOS memory normal operation	J5	Open
CMOS memory clear	J5	Closed
í Factory configured - do not alter	J7	Open
í Battery type select internal	J8	pins 2 & 3 closed
Battery type select external	J8	pins 1 & 2 closed
í On board VGA enabled	J10	pins 1 & 2 closed
On board VGA disabled	J10	pins 2 & 3 closed
í Factory configured - do not alter	J12	N/A
í IDE interface enabled	J24	pins 1 & 2 closed
IDE interface disabled	J24	pins 2 & 3 closed
í Password normal operation	J25	Open
Password reset	J25	Closed
í Factory configured - do not alter	JC5	N/A
í Floppy drive type select 1.44MB	JF1	pins 2 & 3 closed
Floppy drive type select 2.88MB	JF1	pins 1 & 2 closed

DRAM CONFIGURATION 1		
Size	Bank 0	Bank 1
1MB	(1) 256K x 36	NONE
2MB	(1) 256K x 36	(1) 256K x 36
4MB	(1) 1M x 36	NONE
5MB	(1) 1M x 36	(1) 256K x 36
8MB	(1) 1M x 36	(1) 1M x 36
16MB	(1) 4M x 36	NONE
17MB	(1) 4M x 36	(1) 256K x 36
20MB	(1) 4M x 36	(1) 1M x 36
32MB	(1) 4M x 36	(1) 4M x 36

DRAM CONFIGURATION 2		
Size	Bank 0A	Bank 1
4MB	4MB	NONE
5MB	4MB	(1) 256K x 36
8MB	4MB	(1) 1M x 36
20MB	4MB	(1) 4M x 36

Note: Bank 0A is factory installed and is not configurable. Use either this table or the above table.

CACHE CONFIGURATION		
Size	Bank 0	Bank 1
64KB	(4) 8K x 8	(4) 8K x 8
128KB	(4) 32K x 8	NONE
256KB	(4) 32K x 8	(4) 32K x 8

Continued on next page. . .

# FIRST INTERNATIONAL COMPUTER, INC.

## 486-JAL REV. B

... continued from previous page

CPU TYPE CONFIGURATION					
Type	J11	JC1	JC2	JC3	JC4
80486SX PQFP	2 & 3	2 & 3	2 & 3	2 & 3	Open
80486SX PGA	1 & 2	2 & 3	2 & 3	2 & 3	Open
80487SX	1 & 2	1 & 2	1 & 2	2 & 3	2 & 3
80486DX	1 & 2	1 & 2	1 & 2	1 & 2	1 & 2
80486DX2	1 & 2	1 & 2	1 & 2	1 & 2	1 & 2

Note: Pins designated should be in the closed position.

CPU SPEED CONFIGURATION	
Speed	JK1
25MHz	pins 5 & 6 closed
33MHz	pins 1 & 2 closed
50iMHz	pins 5 & 6 closed
66iMHz	pins 1 & 2 closed

HARD DRIVE SPEED CONFIGURATION		
Speed	J16	J17
0	pins 2 & 3 closed	pins 2 & 3 closed
1	pins 1 & 2 closed	pins 2 & 3 closed
2	pins 1 & 2 closed	pins 1 & 2 closed

BUS SPEED CONFIGURATION	
CPU speed	J18
<= 33MHz	pins 1 & 2 closed
> 33MHz	pins 2 & 3 closed

VRAM CONFIGURATION		
Size	Bank 0	Bank 1
512KB	512KB	NONE
1MB	512KB	512KB
2MB	1MB	1MB

Note: The size of the VRAM chips are unidentified.