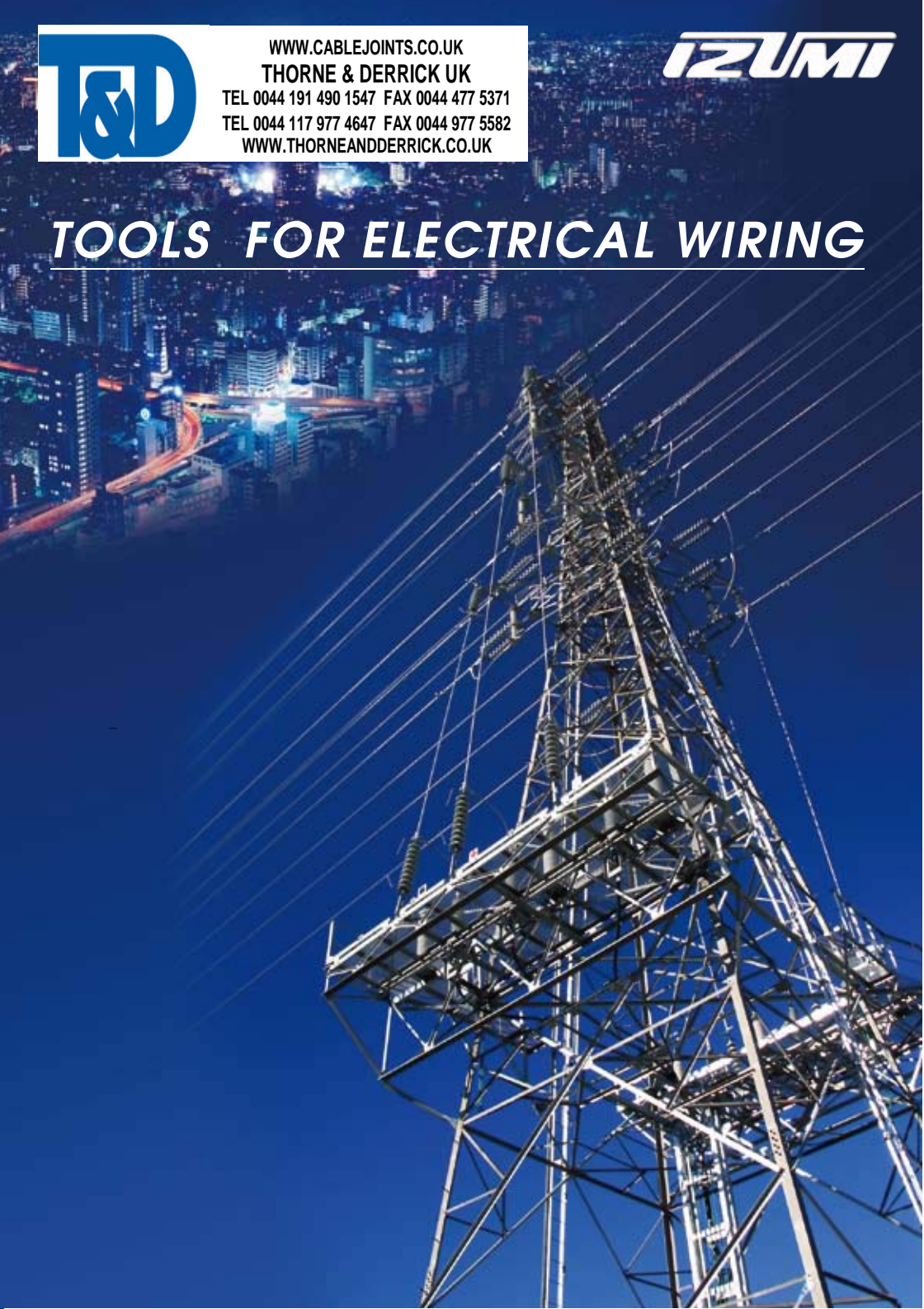




WWW.CABLEJOINTS.CO.UK  
THORNE & DERRICK UK  
TEL 0044 191 490 1547 FAX 0044 477 5371  
TEL 0044 117 977 4647 FAX 0044 977 5582  
WWW.THORNEANDDERRICK.CO.UK



# TOOLS FOR ELECTRICAL WIRING





## **We, IZUMI, are a manufacture of tools for the electric utility industry.**

*With our company policy “quality is life of the company”,  
we are committed to provide safe and high quality products  
that meet a wide range of customer`s demands.*

### ***PRODUCTS***

- *Cutters for electrical wiring*
- *Compression and crimping tools for wire connecting*
- *A full line of steel punches for sheet metal and angle bars.*
- *Pipe Benders*
- *High Pressure hydraulic pumps*

### ***ALL IZUMI TOOLS ARE BACKED BY ISO 9001.***

*Our factory has been certified by ISO 9001. ISO 9001 is Quality Management system which is the most stringent of universally accepted international quality standards.*





# DISTRIBUTION NETWORK

## AMERICA

### Brazil

#### ● LINHA VIVA EQUIPAMENTOS LTDA.

Rua Pedro Alves 110-118 Parate, Santo Cristo, Rio de Janeiro, RJ. 20220-281 BRASIL  
Tel.55-21-2274-4704 Fax.55-21-2274-3371  
E-mail: linhaviva@openlink.com.br  
URL: <http://www.linhaviva.com.br>

### USA, Canada, Mexico

#### ● HUSKIE TOOLS, INC.

198 North Brandon Dr., Glendale Heights, IL 60139, USA  
Tel.1-800-860-6170 Fax.1-800-345-3767  
E-mail: info@huskietools.com  
URL: <http://www.huskietools.com>

## EUROPE

### France

#### ● CEGERS OUTILLAGE

ZI D'EPINAY SOUS-SENAERT 91802 BRUNOY FRANCE  
Tel.33-1-60-47-29-26

### GERMANY

#### ● Holger Clasen GmbH + Co.

Alsterdorfer StraÙe 234, 22297 Hamburg, Germany  
Tel.49-40-511-28-106 Fax.49-40-511-28-109  
E-mail: info@holger-clasen.de  
URL: <http://www.holger-clasen.de>

### Norway

#### ● Ensto NOR A/S

Professor Birkelandsvei 26A, 1081 OSLO NORWAY  
Tel.47-22-90-44-00

### Russia

#### ● Enerprom-Mikuni, ZAO

<Head Office>  
28 Starokuzmikhinskaya str., Irkutsk, Russia 6640333  
Letters: PO box 718, Irkutsk  
Tel.7-3952-211-541 Fax.7-3952-255-797  
E-mail: info@mikuni.ru  
URL: <http://www.mikuni.ru>

#### <Moscow Office>

Office 66,12 Kostyakova str, Moscow, Russia, 127422  
Letters: PO box 18, Moscow

### United Kingdom

#### ● IZUMI PRODUCTS UK LTD.

Unit 4B Hatfield Way, South Church Enterprise, Park Bishop Auckland, Co. Durham, DL14 6XF, UK  
Tel.44-1388-777132 Fax.44-1388-777202  
E-mail: post@izumi-products.co.uk  
URL: <http://www.izumi-products.co.uk>

## AFRICA

### South Africa

#### ● E'LINESMAN (Pty) Ltd.

163 Elsburg Road, Deville Germiston 1400, Johannesburg, SOUTH AFRICA  
Tel.27-11-827-0140 Fax.27-11-824-2335  
E-mail: elinesman@mweb.co.za

#### ● McWade Productions (Pty) Ltd.

34 Industry Road, Olifantsfontein, 1655, Gauteng, SOUTH AFRICA  
Tel.27-11-316-2262 Fax.27-11-316-4791  
E-mail: info@mcwade.co.za  
URL: <http://www.mcwade.co.za>

## ASIA PACIFIC

### Australia

#### ● SPECIALISED FORCE PTY. LTD.

131 Woids Avenue Carlton, N.S.W. 2218, Australia  
Tel.61-2-9547-1844 Fax:61-2-9547-2236  
URL: <http://www.specialisedforce.com.au>

### China

#### ● Guangdong Superpower Electrical Equipment Co., Ltd

6/F, JINDA BUILDING, 12# DA DAO ROAD, GUANGZHOU, CHINA  
Tel.86-20-87694136 Fax.86-20-87694186  
E-mail: superpower7b@163.net  
URL: <http://www.gd-juli.com>

#### ● SHANGHAI ZHONGDUN Co., Ltd.

NO. 3089 HECHUAN ROAD, SHANGHAI CITY, 201103, P.R. CHINA  
Tel.021-6401-0709/1237 Fax.021-64019369  
E-mail: chungdun@online.sh.cn  
URL: <http://www.chungtie.com.cn>

#### ● Wuhan Jujing Electromechanical Co., Ltd.

15F, Hubei Business Mansion, 1 Baofeng Road, Wuhan, Hubei, P.R. China P.C: 430030  
Tel.86-27-83602871 Fax.86-27-83602826  
E-mail: skliao@jujing.com.cn  
URL: <http://www.jujing.com.cn>

### Taiwan

#### ● CHUNG TIE ENGINEERING CO., LTD.

5F, NO.108-1 MINCHUAN RD. SHINDIAN CITY, TAIPEI, TAIWAN 231  
Tel.886-2-2218-1027 ext.231  
Fax.886-2-2218-1356  
E-mail: dickchang86@gmail.com  
URL: <http://www.chungtie.com.tw>

### India

#### ● CRIMP TECHNIQUES INC.

B-203, SAROJ, DHURI COMPLEX. OM NAGAR, AMBADI ROAD, VASAI ROAD. THANE DISTRICT. MAHARASHTRA. INDIA.  
PIN CODE: 401202. INDIA  
Tel.91-250-2349610 Fax.91-250-2335239  
CELL : 09422074408  
CUSTOMER SERVICE NO: 9320074408  
E-mail: crimp@vsnl.com  
URL: <http://www.crimptechniques.com>

### Indonesia

#### ● PT FASTINDO PIRANTI KABEL

Jl. Pegambiran Kav. 292 A-B, Rawamangun Jakarta 13220-Indonesia  
Tel.62-21-4753535 Fax.62-21-4753505  
URL: <http://www.fastindo.co.id>

### Korea

#### ● IZUMI COMPANY LTD.

B-601, Industrial Park, 1025-1, Dogok-ri, Wabu-eup, Namyangju-si, Gyeonggi-do, Korea  
Tel.82-31-521-5558 Fax.82-31-521-5940  
A/S Center TEL:82-2-2277-2091  
E-mail: izumi@izumi.co.kr  
URL: <http://www.izumi.co.kr>

### Malaysia

#### ● WMM PRECISION ENTERPRISE SDN. BHD.

Lot 12, Jalan USJ 7/3C, UEP Subang Jaya, 47600 Petaling Jaya, Malaysia  
Tel.60-3-5633-4712 Fax.60-3-5633-7929  
E-mail: wmm@tm.net.my

# INDEX

## LITHIUM ION BATTERY OPERATED TOOLS

LIC-558U	4
LIC-551F	5
LIC-5431	6
LIC-5510	7
LIC-5630	8
LIC-50	9
LIC-S524	10
LIC-S540	11
LIC-585YC	12
LIC-5200MX	13.14.15.16

## BATTERY OPERATED COMPRESSION TOOLS

ECO-50	17
REC-551F	18
REC-558U	19
REC-5431	20
REC-5510	21
REC-H5130	22
REC-3410	23
REC-3430	24
REC-3510	25
REC-3610	26

## OTHERS

REC-5200MX	27
REC-55PDF	28
REC-P2	39
SB-3UK	40

## BATTERY OPERATED CUTTERS

REC-S524	29
REC-S540	30
REC-530Y	31
REC-585YC	32
REC-S3550	33
REC-50	34
REC-54	35

REC-54AC	36
----------	----

## BATTERY OPERATED CRIMPING TOOLS

REC-5630	37
REC-5750	38

## BATTERY PACK

BP-14LN	2
BP-70I	41
BP-70E	42
BP-70EI	43
BP-70MH	44

## CHARGER

CH-25LNW	3
CH-3FC2	45
CH-35R or CH-35EMC	46
CH-70DCH	47

## CRIMPING TOOLS

EP-150A	48
12A	49
AC-5ND	50
UC-6B	59
UC-6FT2	60

## HYDRAULIC COMPRESSION TOOLS

15B	51
16B	52
CN-58A	53
EP-50	54
EP-410	55
EP-H130	56
EP-431	57
EP-510C	58
EP-50H	61
EP-410H	62
EP-H130H	63
EP-431H	64

<b>EP-510HC</b>	65
<b>EP-610HS-2</b>	66
<b>LP-430B</b>	67
<b>EP-520C</b>	68
<b>EP-60S</b>	69
<b>EP-60D</b>	70
<b>EP-100W</b>	71
<b>EP-200W</b>	72

## HYDRAULIC CUTTERS

<b>S-200</b>	73
<b>S-240</b>	74
<b>S-320</b>	75
<b>S-400</b>	76
<b>S-550</b>	77
<b>850</b>	78
<b>SP-20A</b>	79
<b>SP-24</b>	80
<b>SP-32</b>	81
<b>SP-40A</b>	82
<b>SP-55A</b>	83
<b>P-60</b>	84
<b>P-85</b>	85
<b>P-100A</b>	86
<b>P-132</b>	87
<b>YSP-30B</b>	88
<b>P-85YC</b>	89
<b>S-32CC1</b>	90

## HYDRAULIC PUMP

<b>HP-180N</b>	91
<b>HP-700A</b>	92
<b>FP-700A</b>	93
<b>R14E-F1</b>	94
<b>R14E-A1</b>	95
<b>HPE-2A</b>	96
<b>HPE-2D</b>	97
<b>HPE-4</b>	98
<b>HPE-4M</b>	99

## HYDRAULIC PUNCHES

<b>SH-10(A)P, SH-10(B)P</b>	100
<b>SH-5PDG</b>	101
<b>SH-70B</b>	102

## HYDRAULIC PIPE BENDER

<b>PB-10N</b>	103
<b>PB-15N</b>	104

## OTHER TOOLS

<b>NP-400</b>	105
<b>IZ-325A</b>	106

## FORCE & PRESSURE TEST GAUGE

<b>PG-325</b>	107
<b>PG-58</b>	108
<b>PG-15F</b>	109
<b>PG-610B</b>	110
<b>PG-UC6</b>	111
<b>PG-H130</b>	112

## TECHNICAL DATA

<b>Selection of Battery &amp; Compatibility chart</b>	113
<b>Selection of Compression Tools (6-15 ton)</b>	114
<b>Selection of Compression Tools (30-200 ton)</b>	115
<b>Selection of Cutters</b>	116-117
<b>Hydraulic Hose Selection Chart</b>	118
<b>Size of Conduit JIS standard type</b>	119
<b>HYDRAULIC TOOLS MECHANISM</b>	120-123
<b>COMPRESSION DIES</b>	124-130
<b>IZUMI TAP-OFF CONNECTORS</b>	131-132

NOTE : IZUMI reserves the right to change specification of products without notice.

# LITHIUM ION BATTERY OPERATED TOOLS

*Well balanced design*



*New Slide in battery  
connection system*

**World wide  
Multi-voltage Charger  
(100-240V)**

**BP-14LN Lithium-Ion battery provides  
more cycles per charge in comparison  
with our Ni-cad and Ni-metal battery**

MODEL No.

**BP-14LN**

Designed for exclusive use on all LIC series tools  
3.0 Ah Capacity



BP-14LN High Capacity Battery

**SPECIFICATIONS**

Output voltage : 14.4 VDC  
Capacity : 3.0 Ah  
Type : Lithium Ion  
Charge time :  
25 min (80% capacity)  
40 min (100% capacity)

**SIZE**

107 (L) x 63 (H) x 80 (W) mm

**WEIGHT**

570 g

**FEATURES**

The BP-14LN is developed for IZUMI LIC-Series.

Environmentally friendly : contains no hazardous substances.

Light weight : weighs only 65% compared with BP-70Ei Ni-Cad battery.

No memory effect : it can be charged at anytime.

Low self discharge rate : Longer shelf life because of low self discharge rate.

New slide in battery installation : gives more secure connection with the tool and quick and easy connection and removal.

BP-14LN life expectancy is more than 300% in comparison with Ni-Cad and Ni-metal battery , BP-70E BP-70MH etc.

BP-70E : 600 recharges

BP-70MH : 600 recharges

BP-14LN : more than 1800 recharges.

**REMARKS**

\* The battery has a limited life. When capacity becomes about 1/2 of the original capacity, the battery should be replaced.

\* If the battery is stored without being charged, natural drainage will cause the power to be reduced. Be sure to charge the battery every 3 months.

\* When the battery is used for the first time, the battery will need to be fully charged before use.

\* Cycles per charge will vary depending on the type and size of the material being cut or compressed.



MODEL No.

# CH-25LNW

Multi-voltage Battery Charger (100-240V)



CH-25LNW

## SPECIFICATIONS

Input Voltage: 100-240V AC  
(50/60HZ)

145VA (100V) - 148VA (240)

## SIZE

230 (L) X 80 (H) X 145 (W) mm

## WEIGHT

1.6 kg

## CHARGE TIME FOR BP-14LN

25min. (80% capacity)

40min. (100% capacity)



CH-25LNW with RP-14LN

## FEATURES

Multi voltage and quick charger (100V-240V) for Lithium-Ion battery BP-14LN.

It takes only 40min to charge 100% capacity.

CH-25LNW is an EMC approved charger in accordance with related CE and EMC directive.

## REMARKS

Stand by-Red blinking

80% completion-Green blinking

Completion-Orange blinking

Auxiliary charging-Green blinking

High or low temperature-Red lighting

Impossible to charge-Red blinking

Charges BP-14LN only

Cannot charge BP-70R, BP-70I, BP-70E, BP-70EI and BP-70MH



MODEL No.

**LIC-558U**

Accepts Bundy W type dies and Kearney/  
Blackburn O type dies



LIC-558U shown with BP-14LN

**SPECIFICATIONS**

Ram stroke : 13 mm  
Motor : 14.4 VDC

Reservoir capacity : 100 cc  
Force at die face : 54 kN

BP-14LN Battery use only.

**SIZE**

332 (L) x 295 (H) x 84 (W) mm

**WEIGHT**

3.4 kg (less battery)

**ACCESSORIES**

Double molded carrying case,  
Shoulder Strap  
Battery and charger

**REMARKS**

Dies are sold separately.  
Specify the manufacturer's die and  
connector numbers.  
Specify charger input voltage.

- \* Battery operated compression tool
- \* Detachable latch type H framed tool head
- \* 25CAT cutter attachment as an optional accessory
- \* LED lights when battery capacity becomes low
- \* Light weight and slim design
- \* Pistol type, well balanced design
- \* Right or Left handed operation
- \* Accepts both Bundy and Kearney type dies (W and O type dies)
- \* D3 Saddle dies
- \* 180 degree swivel head
- \* Optional DC charger
- \* Quality backed by ISO9001

**FEATURES**

The LIC-558U is a compression tool operated by eco-friendly Li-Ion battery.  
This tool accepts Bundy W type dies and kearney / Block burn O type dies.

Electronic circuit board with LED indicates compression status and battery capacity.  
The LIC-558U has electronic memory function to record repair history by connecting optional "ROBO-RW" analyzer.

It squeezes commonly used service entrance connectors, lugs, sleeves, H and C taps. It can be easily carried and used in limited access areas because of its swivel head and compact design.

Attached quick release pins make changing between compression head and cutting head a one minute job, with no pins or springs to lose! This revolutionary design eliminates the need for multiple tools at one job site.

The 25CAT cutter attachment can slice nonferrous cables up to 25mm.



MODEL No.  
**LIC-551F**

Accepts Beku type dies widely used in European countries  
Applicable range : up to 150mm<sup>2</sup> Cu connectors  
(Approx. 20mm across vertex of hexagon)



LIC-551F shown with BP-14LN

**SPECIFICATIONS**

Ram stroke : 15 mm  
Motor : 14.4 VDC

Reservoir capacity :  
100 cc  
Force at die face :  
52 kN

BP-14LN Battery use only.

**SIZE**

322 (L) x 294 (H) x 84 (W) mm

**WEIGHT**

3.2 kg (less battery)

**ACCESSORIES**

Shoulder strap,  
Double molded carrying case,  
Battery and charger


**FEATURES**

The LIC-551F is an environment friendly Li-ion battery operated compression tool accepts BEKU type dies widely use in European countries, applying compression fitting to copper aluminum and ACSR conductors widely used in the industry.

Light weight and slim design is ideal for close quarter application such as connection in the switch box. Also easy latch type closed head provides easy insertion and removal of connectors.

Electronic circuit board with LED indicates compression status and battery capacity.

The LIC-551F has electronic memory function to read repair history by connecting optional "ROBO-RW" analyzer.

**REMARKS**

Dies are sold separately.  
Specify the manufacturer's die and connector numbers.  
Specify charger input voltage.

- \* Battery operated compression tool
- \* Latch type H framed tool head
- \* Light weight and slim design
- \* Pistol type, well balanced design
- \* 14.4VDC powerful motor
- \* Right or left handed operation
- \* Accepts Beku type dies
- \* 180 degree swivel head
- \* Optional DC charger
- \* Quality backed by ISO 9001



MODEL No.

**LIC-5431**Accepts existing **12 ton** U-type dies

LIC-5431 shown with 14LN

**SPECIFICATIONS**

Ram stroke : 31 mm  
 Motor : 14.4 VDC

Reservoir capacity :  
 135 cc  
 Force at die face :  
 106 kN

BP-14LN Battery use only.

**SIZE**

392 (L) x 315 (H) x 84 (W) mm

**WEIGHT**

6.1 kg (less battery)

**ACCESSORIES**

Shoulder strap,  
 Double molded carrying case,  
 Battery and charger

**REMARKS**

Dies are sold separately.  
 Specify the manufacturer's die and  
 connector numbers.  
 Specify charger input voltage.

- \* Battery operated pistol type  
 compression tool
- \* Rapid ram advance mechanism
- \* Well balanced design
- \* 31 mm Jaw opening C head
- \* 14.4VDC powerful motor
- \* Right or Left handed operation
- \* Accepts all dies used for Alcoa,  
 Burndy, T&B, Klauke, Cembre and  
 Blackburn 12 ton U-type dies
- \* Optional DC charger
- \* Quality backed by ISO9001

**FEATURES**

The LIC-5431 is a 12 ton class compression  
 tool operated by eco-friendly Li-Ion battery.  
 This tool accommodates 12 ton U-type dies  
 for applying compression fittings to copper  
 aluminum and ACSR conductors widely  
 used in the industry.

Pistol type 12 ton tool makes it easier for  
 working in tight space or in the control box.

The trigger switch and return button are  
 activated by only one hand so that other  
 hand is always free to hold working material.

Electronic circuit board with LED  
 indicates compression status and  
 battery capacity.

The LIC-5431 has electronic memory  
 function to record repair history by  
 connecting optional "ROBO-RW" analyzer.



MODEL No.  
**LIC-5510**

Accepts existing **12 ton** U-type dies



LIC-5510 shown with BP-14LN



### SPECIFICATIONS

Ram stroke : 42 mm  
Motor : 14.4 VDC

Reservoir capacity : 135cc  
Force at die face : 106 kN

BP-14LN Battery use only.

### SIZE

419 (L) x 320 (H) x 84 (W) mm

### WEIGHT

7.1 kg (less battery)

### ACCESSORIES

Shoulder Strap  
Double molded carrying case,  
Battery and charger

### FEATURES

The LIC-5510 is an environment friendly Li-Ion battery operated 12 ton class compression tool to accommodate 12 ton U-type dies for applying compression fittings to copper, aluminum and ACSR conductors, widely used in the industry.

Pistol type 12 ton tool made it easier for working in tight space or in the control box.

The trigger switch and return button are activated by only one hand so that other hand is always free to hold working material.

Electronic circuit board with LED indicates compression status and battery capacity.

The LIC-5xxx series tool has electronic memory function to record repair history by connecting optional "ROBO-RW" analyzer.

### REMARKS

Dies are sold separately.  
Specify Charger input voltage.

- \* Battery operated pistol type compression tool
- \* Rapid ram advance mechanism
- \* Well balanced design
- \* 42mm Jaw opening C head
- \* 14.4VDC powerful motor
- \* Right or Left handed operation
- \* Accepts all dies used for Alcoa, Burndy, T&B, Klauke, Cembre and Blackburn 12 ton U-type dies
- \* 350 degree swivel head
- \* Optional DC charger
- \* Quality backed by ISO9001

MODEL No.

**LIC-5630**

Up to 32mm outer diameter connector



LIC-5630 shown with BP-14LN

### SPECIFICATIONS

Ram stroke : 29 mm  
Opening between nibs : 32 mm

Reservoir capacity :  
100 cc  
Output force :  
60 kN

BP-14LN Battery use only.

### SIZE

368 (L) x 272 (H) x 71 (W) mm

### WEIGHT

4.7 kg (less battery)

### ACCESSORIES

Shoulder strap,  
Double molded carrying case,  
Battery and charger

### FEATURES

The LIC-5630 is an environment friendly Li-Ion battery operated hand held dieless crimping tool used to compress Anderson type connectors up to 500KCM.

Three movable nibs push connectors against the top fixed nib. As a result, four indentations are made into the connector.

This tool is designed to install Anderson type connectors. Consult your connector manufacturer for dieless applications.

### REMARKS

Specify charger input voltage.

- \* Battery operated dieless crimping tool
- \* Rapid ram advance mechanism
- \* Light weight aluminum forged head
- \* LED lights when battery capacity becomes low
- \* Light weight and slim design
- \* Pistol type housing
- \* 14.4VDC powerful motor
- \* Right or Left handed operation
- \* 360 degree swivel head
- \* Optional DC charger



MODEL No.

**LIC-50**

The new powerful magnetic motor with high torque



LIC-50 shown with BP-14LN

**SPECIFICATIONS**

Drive unit : 14.4V DC Motor

 Maximum cutting diameter :  
Nonferrous 50 mm

BP-14LN Battery use only.

**SIZE**

84 (L) x 365 (H) x 130 (W) mm

**WEIGHT**

2.1 kg (less battery)

**ACCESSORIES**

 Steel carrying case,  
Battery and charger


LIC-50


**FEATURES**

The new powerful magnetic motor with high torque offers superior performance to the REC-50.

The LIC-50 was specifically designed for cutting the toughest copper and aluminum cables in a limited amount of space. Cuts are clean with minimal cable distortion and comfortably fits into a gloved hand. Repetitive ratcheting movement is entirely eliminated. Just a squeeze of the rocker arm trigger is all it takes to cut .

This powerful gear reduction motor pulls a movable blade through tough copper cable.

It is equipped with an electronic circuit for overloading protection.

**REMARKS**

Cutting capacity : # of cuts

Materia	BP-14LN
Polyethylene cable	
600V-CV325 mm <sup>2</sup> (31 mm OD)	: 180
600V-CV150 mm <sup>2</sup> x 3(46 mm OD)	: 110
600V-CV500 mm <sup>2</sup> (38 mm OD)	: 110
6KV-CVT500mm <sup>2</sup> (45 mm OD)	: 90
Multi-core vinyl insulation cable	
VVR150 mm <sup>2</sup> (47 mm OD) 3 core	: 80
Soft copper cable	
IV500 mm <sup>2</sup> (35 mm OD)	: 140
Hard copper cable	
150 mm <sup>2</sup> (21 mm OD)	: 270

MODEL No.

**LIC-S524**

Cuts steel materials as well as cables



LIC-S524 shown with BP-14LN

**SPECIFICATIONS**

Ram stroke : 24 mm  
 Motor : 14.4 VDC

Reservoir capacity :  
 100 cc  
 Output force :  
 84 kN

BP-14LN Battery use only.

**SIZE**

315 (L) x 304 (H) x 84 (W) mm

**WEIGHT**

4,4 kg (less battery)

**ACCESSORIES**

Shoulder strap,  
 Double molded carrying case,  
 Battery and charger,

**REMARKS**

Specify charger input voltage.

Cutting capacity : # of cuts

Material		BP-14LN
Wire rope	6x7 : 18mm	82
	6x12 : 24mm	105
	6x19 : 24mm	67
Soft steel bar	: 20mm	90
Re-bar	: 16mm	120
Cu strands	: 24mm	120
Al strands	: 24mm	150
ACSR	: 24mm	142
Guy wire	1x7 : 20mm	127
	1x19 : 20mm	120
CCP cable	: N/A	

**FEATURES**

The LIC-S524 is a cable cutter operated by eco-friendly Li-Ion battery to cut the toughest steel used in construction today.

With the pull of the trigger, you can cut ACSR cables up to 24mm, and guy wires to 20mm.

The specially designed flip-top latch and rotating head provide exceptional ease of use and maneuverability in tight working quarters.

The LIC-S524 has an overload bypass which will kick out when tool reaches 84kN of output.





MODEL No.  
**LIC-S540**

Cuts steel materials as well as cables.



LIC-S540 shown with BP-14LN

**SPECIFICATIONS**

Ram stroke : 40 mm  
Motor : 14.4 VDC

Reservoir capacity :  
135cc  
Output force :  
68 kN

BP-14LN Battery use only.

**SIZE**

441 (L) x 325 (H) x 85 (W) mm

**WEIGHT**

6.1 kg (less battery)

**ACCESSORIES**

Shoulder strap,  
Double molded carrying case,  
Battery and charger


**FEATURES**

The LIC-S540 is a cable cutter operated by eco-friendly Li-Ion battery to cut the ACSR cables used in transmission line construction work. It is now equipped with rapid ram advance mechanism for faster operation.

With the pull of the trigger, you can cut ACSR cables up to 38mm, guy wires to 20mm, and wire ropes to 22mm.

The rotating head provides exceptional ease of use and maneuverability in tight working quarters.

The lock pin type head allows the cutter head to open widely for easy insertion of cutting material.

The LIC-S540 has an overload bypass which will kick out when tool reaches 68kN of output.

**REMARKS**

Specify charger input voltage.

Cutting capacity : # of cuts

Material	BP-14LN
Wire rope 6 x 7	60
6 x 12	82
6 x 19	45
Soft steel bar	60
Re-bar	60
Cu strands	42
Al strands	52
ACSR	45
Guy wire 1 x 7	120
1 x 19	72
CCP cable	N/A



MODEL No.

**LIC-585YC**

Cuts CCP cables up to 85 mm  
 CU and AL strands upto 60mm



LIC-585YC shown with BP-14LN

**FEATURES**

The LIC-585YC is a scissors type cable cutter operated by Li-Ion battery to cut various cables used in the industry today. It is equipped with rapid ram advance mechanism for faster operation.

With a pull of the trigger, you can cut Cu and Al cables up to 60mm and CCP cables up to 85mm.

The scissors type cutter head provides exceptional ease of use and maneuverability when making many cuts.

The LIC-585YC has an overload bypass which will kick out when the tool reaches 80kN of output.

**SPECIFICATIONS**

Ram stroke : 44 mm  
 Motor : 14.4 VDC

Reservoir capacity :  
 135 cc  
 Output force :  
 80 kN

BP-14LN Battery use only.

**SIZE**

517 (L) x 325 (H) x 86 (W) mm

**WEIGHT**

6,4 kg (less battery)

**ACCESSORIES**

Shoulder strap, Grip,  
 Steel carrying case,  
 Battery and charger

**REMARKS**

Specify charger input voltage.

Cutting capacity : # of cuts

Material	BP-14LN
Polyethylene cable 600V-CV325mm <sup>2</sup> (60mm OD) 3 core	22
600V-CV150mm <sup>2</sup> (46mm OD) 3 core	60
600V-CV500mm <sup>2</sup> (38mm OD)	45
Multi-core vinyl insulation cable VVR150mm <sup>2</sup> (47mm OD) 3 core	60
CCP Cable (85mm OD)	45
Lead sheathed cable (85mm OD)	45

MODEL No.

# LIC-5200MX

Non-insulated terminals: 14, 22, 38, 60, 70, 80, 100, 150, 200mm<sup>2</sup>  
 Angle beam fabricating attachments and many other attachments



LIC-5200MX shown with BP-14LN



## FEATURES

The LIC-5200MX is a multipurpose tool operated by eco-friendly Li-Ion battery. This tool is suitable for various types of crimping, cutting, punching and etc.

Available attachments are 8 kinds and the LIC-5200MX comes standard with rotary type crimping head, 200 mm<sup>2</sup> Yoke-nest and indentors suitable for up to 200 mm<sup>2</sup> crimping terminals.

Attachments are mounted on the tool head by inserting two lock pins located at the cylinder head for easy changeover.

The control buttons are activated by only one hand so that other hand is always free to hold working material.

Electronic circuit board with LED indicates compression status and battery capacity.

## SPECIFICATIONS

Ram stroke : 17 mm  
 Motor : 14.4 VDC

Reservoir capacity :  
 100 cc  
 Force at die face :  
 127 kN

BP-14LN Battery use only.

## SIZE

356 (L) x 306 (H) x 84 (W) mm

## WEIGHT

5.1 kg (less battery)

## ACCESSORIES

Shoulder strap,  
 Plastic carrying case,  
 Indenting dies,  
 Nest :Nest wheel & 200 die  
 Indentor : 14, 22, 38-70, 80-150, 200  
 (5) pieces  
 Battery and Charger

## REMARKS

Specify charger input voltage.

Following attachments are available separately

- 200AT-13WT : Threaded bar cutting attachment
- 200AT-S16 : Rebar cutting attachment
- 200AT-50YC : Cable cutting attachment
- 200AT-16B : T connector compression dies
- 200AF-HEX : Hexagonal compression Dies
- 200AT-9PD : Knock out punching attachment
- 200AT-AP18 : Angle beam punching attachment
- (200AT-DCM) Raceway cutting attachment
- 150AT-DCM
- +200AD-DCM



MODEL No.

**200AT-50YC**

Cable Cutter

Cutting capacity: up to 50mm cable (including insulation)  
# of cuts/charge (BP-14LN)

Cu 3 × 150mm <sup>2</sup> (46mmOD)	40
Cu 500mm <sup>2</sup> (45mmOD)	34

**REMARKS**

Cuts nonferrous cables only.



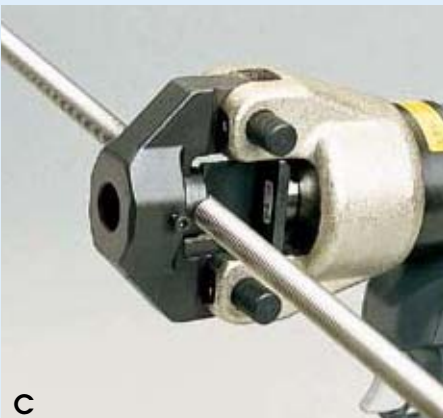
MODEL No.

**200AT-S16**

Re-bar Cutter

Cutting capacity: # of cuts/charge (BP-14LN)

16mm rebar	120
16mm soft steel bar	120
13mm stainless steel bar	105



MODEL No.

**200AT-13WT**

Threaded bar Cutter

Cutting capacity: # of cuts/charge (BP-14LN)

W3/8" Soft steel (ss)	105
Stainless	52
W1/2" Soft steel (ss)	82
stainless	42

※ Comes with W3/8" Die Only. W1/2" Die sold separately



D

MODEL No.

**200AT-9PD** Knock out Puncher

Punching capacity : up to B104 (115.5mm) diameter hole on 3.2mm thickness mild steel  
34/charge (BP-14LN)

**REMARKS**

Punch & die, Set bolts, Collars are the same as those used for SH-10.

200AT-9PD comes with Set bolts and Collars.

Punch and die are sold separately. (See SH-10 page)



E

MODEL No.

**200AT-AP18** Angle Steel Puncher

Punching capacity:  $\phi$  10.5,  $\phi$  13.5,  $\phi$  17.5 mm holes on 6mm thickness steel

Size: 186 × 130 × 67 mm

Weight: 3.8 kg

# of punching/charge: 82 (BP-14LN)



F

MODEL No.

**200AT-DCM**  
**(150AT-DCM+200AD-DCM)** Raceway Cutter

Applicable raceway : D-1, S-D1, P-1, D-2

Size : 176 (H) x200 (W) x108 (D) mm

Weight : 4.5 kg

# of cutting/charge : 165/BP-70MH

Cutting speed : 3 sec.



MODEL No.

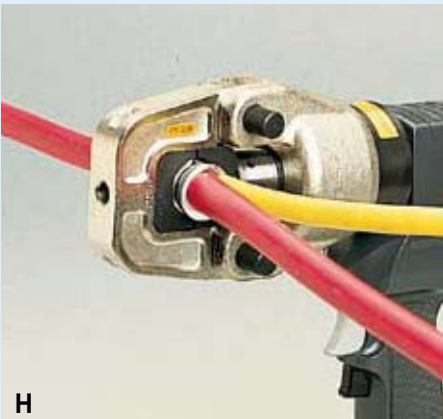
**200AT-Hex** Hexagonal Compression Dies

Compression Dies & # of compression per charge

Size	Across vertex	Die width
Cu8 ~ 14-12	12	18.4
Cu22 ~ 38-14	14	15
Cu45 ~ 70-19	19	11
Cu75 ~ 100-23	23	9
Cu110 ~ 125-26	26	11
Cu150-29	29	10
Cu180 ~ 200-32	32	10

**REMARKS**

# of compression for Cu180 ~ 200-32 : 35 (BP-14LN)



MODEL No.

**200AT-16B** Dies for C-connectors

Compression Dies & # of compression per charge. (BP-14LN)

Size	Size	Size
T-11	T-44	T-122
T-16	T-60	T-154
T-20	T-76	T-190
T-26	T-98	T-240

**REMARKS**

Dies are the same as those of #16B tool.

# of compression for T-240 : 40 (BP-14LN)

MODEL No.

**ECO-50**

Battery Operated Compression Tool



ECO-50

**SPECIFICATIONS**

Ram stroke : 15 mm  
 Motor : 14.4 VDC

Applicable Hex Compression :  
 Max. 150mm<sup>2</sup> Cu Lugs  
 Force at die face :  
 52 kN

**SIZE**

397 (L) x 79 (H) x 70 (W) mm

**WEIGHT**

2.3kg (less battery)  
 3.1kg (with battery)

**ACCESSORIES**

Double molded carrying case,  
 Battery and charger  
 (See selection Battery &  
 Compatibility Chart)



ECO-50

**FEATURES**

The ECO-50 is a stick type battery operated compression tool accepts BEKU type dies up to Cu150mm<sup>2</sup> of hexagonal compression.

This portable lightweight rechargeable compression tool is easier to access tight cable joints in narrow control panel.

The number of crimps per charge for 150mm<sup>2</sup> terminal : 67 crimps / BP-70MH.

**REMARKS**

- Dies are sold separately.
- \* Fully automatic, self-contained
- \* Battery Operated Compression Tool
- \* In-line design for one hand operation
- \* 14.4 VDC powerful motor
- \* Right or Left handed operation
- \* Accepts Beku type dies
- \* Optional DC charger
- \* Quality backed by ISO9001

MODEL No.

# REC-551F

Accepts Beku type dies widely used in European countries  
 Applicable range : up to 150mm<sup>2</sup> Cu connectors  
 (Approx. 20mm across vertex of hexagon)



REC-551F shown with BP-70MH

## SPECIFICATIONS

Ram stroke : 15 mm  
 Motor : 14.4 VDC

Reservoir capacity : 100 cc  
 Force at die face : 52 kN

## SIZE

323 (L) x 253 (H) x 70 (W) mm

## WEIGHT

3.2 kg (less battery)

## ACCESSORIES

Shoulder strap,  
 Double molded carrying case,  
 Battery and charger  
 (See selection Battery & Compatibility Chart)



REC-551F with Beku type dies

## FEATURES

The REC-551F accepts BEKU type dies widely used in European countries.

Light weight and slim design is ideal for close quarter application such as connection in the switch box. Also easy latch type closed head provides easy insertion and removal of connectors.

Electronic circuit board with LED indicates compression status and battery capacity.

The REC-551F has electronic memory function to read repair history by connecting optional "ROBO-RW" analyzer.

The number of crimps per charge for 150mm<sup>2</sup> terminal : 67 crimps / BP-70MH

## REMARKS

Dies are sold separately.  
 Specify the manufacturer's die and connector numbers.  
 Specify charger input voltage.

- \* Battery operated compression tool
- \* Latch type H framed tool head
- \* Light weight and slim design
- \* Pistol type, well balanced design
- \* 14.4VDC powerful motor
- \* Right or left handed operation
- \* Accepts Beku type dies
- \* 180 degree swivel head
- \* Optional DC charger
- \* Quality backed by ISO 9001





MODEL No.

# REC-558U

Accepts Burndy W type dies and Kearney/  
Blackburn O type dies



REC-558U shown with BP-70MH



REC-558U shown with "ROBO-RW" analyzer



## SPECIFICATIONS

Ram stroke : 13 mm  
Motor : 14.4 VDC

Reservoir capacity : 100 cc  
Force at die face : 54 kN

## SIZE

333(L) x 253(H) x 59(W) mm

## WEIGHT

3.4 kg (less battery)

## ACCESSORIES

Double molded carrying case,  
Shoulder Strap  
Battery and charger  
(See selection Battery &  
Compatibility Chart)

## FEATURES

Electronic circuit board with LED indicates compression status and battery capacity. The REC-558U has electronic memory function to record repair history by connecting optional "ROBO-RW" analyzer.

It squeezes commonly used service entrance connectors, lugs, sleeves, H and C taps. It can be easily carried and used in limited access areas because of its swivel head and compact design.

Attached quick release pins make changing between compression head and cutting head a one minute job, with no pins or springs to lose! This revolutionary design eliminates the need for multiple tools at one job site.

The 25CAT cutter attachment can slice nonferrous cables up to 25mm.

The number of crimps for maximum size conductor: 100crimps/BP-70MH

## REMARKS

Dies are sold separately. Specify the manufacturer's die and connector numbers. Specify charger input voltage.

- \* Battery operated compression tool
- \* Detachable latch type H framed tool head
- \* 25CAT cutter attachment as an optional accessory
- \* LED lights when battery capacity becomes low
- \* Light weight and slim design
- \* Pistol type, well balanced design
- \* Right or Left handed operation
- \* Accepts both Burndy and Kearney type dies (W and O type dies)
- \* D3 Saddle dies
- \* 180 degree swivel head
- \* Optional DC charger
- \* Quality backed by ISO9001

MODEL No.

# REC-5431

Accepts existing **12 ton** U-type dies



REC-5431 shown with BP-70MH



ROBO-RW



## FEATURES

The REC-5431 is a battery operated 12 ton class compression tool to accommodate 12 ton U-type dies for applying compression fittings to copper aluminum and ACSR conductors widely used in the industry.

Pistol type 12 ton tool makes it easier for working in tight space or in the control box.

The trigger switch and return button are activated by only one hand so that other hand is always free to hold working material.

Electronic circuit board with LED indicates compression status and battery capacity.

The REC-5431 has electronic memory function to record repair history by connecting optional "ROBO-RW" analyzer.

The number of crimps per charge for maximum size conductor: 60 crimps / BP-70MH

## SPECIFICATIONS

Ram stroke : 31 mm  
Motor : 14.4 VDC

Reservoir capacity : 135 cc  
Force at die face : 106 kN

## SIZE

392 (L) x 343 (H) x 70 (W) mm

## WEIGHT

5.9 kg (less battery)

## ACCESSORIES

Shoulder strap,  
Double molded carrying case,  
Battery and charger  
(See selection Battery & Compatibility Chart)

## REMARKS

Dies are sold separately.  
Specify the manufacturer's die and connector numbers.  
Specify charger input voltage.

- \* Battery operated pistol type compression tool
- \* Rapid ram advance mechanism
- \* Well balanced design
- \* 31 mm Jaw opening C head
- \* 14.4VDC powerful motor
- \* Right or Left handed operation
- \* Accepts all dies used for Alcoa, Burndy, T&B, Klauke, Cembre and Blackburn 12 ton U-type dies
- \* Optional DC charger
- \* Quality backed by ISO9001

MODEL No.

# REC-5510

 Accepts existing **12 ton** U-type dies


REC-5510 shown with BP-70MH



REC-5510



## SPECIFICATIONS

Ram stroke : 42 mm  
 Motor : 14.4 VDC

Reservoir capacity : 135cc  
 Force at die face : 106 kN

## SIZE

421(L) x 286(H) x 78(W) mm

## WEIGHT

7.1 kg (less battery)

## ACCESSORIES

Shoulder Strap  
 Double molded carrying case,  
 Battery and charger  
 (See selection Battery &  
 Compatibility Chart)

## REMARKS

Dies are sold separately.  
 Specify Charger input voltage.

- \* Battery operated pistol type compression tool
- \* Rapid ram advance mechanism
- \* Well balanced design
- \* 42mm Jaw opening C head
- \* 14.4VDC powerful motor
- \* Right or Left handed operation
- \* Accepts all dies used for Alcoa, Burndy, T&B, Klauke, Cembre and Blackburn 12 ton U-type dies
- \* 350 degree swivel head
- \* Optional DC charger
- \* Quality backed by ISO9001

## FEATURES

The REC-5510 is a battery operated 12 ton class compression tool to accommodate 12 ton U-type dies for applying compression fittings to copper, aluminum and ACSR conductors. widely used in the industry.

Pistol type 12 ton tool made it easier for working in tight space or in the control box.

The trigger switch and return button are activated by only one hand so that other hand is always free to hold working material.

Electronic circuit board with LED indicates compression status and battery capacity.

The REC-5000 series tool has electronic memory function to record repair history by connecting optional "ROBO-RW" analyzer.

MODEL No.

**REC-H5130**Accepts existing **12 ton** U-type dies, dies for deep indent crimps

REC-H5130

**SPECIFICATIONS**

Ram stroke : 30 mm  
 Motor : 14.4 VDC

Reservoir capacity :  
 135 cc  
 Force at die face : 120 kN

**SIZE**

402 (L) x 256 (H) x 78 (W) mm

**WEIGHT**

5,6 kg (less battery)

**ACCESSORIES**

Shoulder strap,  
 Double molded carrying case,  
 Battery and charger  
 (See selection Battery &  
 Compatibility Chart)

**REMARKS**

Dies are sold separately.  
 Specify the manufacturer's die and  
 connector numbers.  
 Specify charger input voltage.

- \* Battery operated pistol type compression tool
- \* Rapid ram advance mechanism
- \* Well balanced design
- \* 25 mm Jaw opening H head
- \* 14.4VDC powerful motor
- \* Right or Left handed operation
- \* Accepts all dies used for Alcoa, Burnyd, T&B, Klauke, Cembre and Blackburn 12 ton compressors, as well as dies for deep indent crimps.
- \* 350 degree swivel head
- \* Optional DC charger
- \* Quality backed by ISO9001

**FEATURES**

The REC-H5130 is a battery operated 12 ton class compression tool to accommodate 12 ton U-type dies and dies for deep indent crimps widely used in the industry.

This H head tool makes it easier to access to tight cable joints particularly in the control box.

The trigger switch and return button are activated by only one hand so that other hand is always free to hold working material.

The number of crimps per charge for maximum size conductor: 60 crimps / BP-70MH

This tool was designed to accommodate shell type dies for applying compression fittings to copper, aluminum and ACSR conductors.



Example of dies



MODEL No.

# REC-3410

 Accepts existing **12 ton** U-type dies


REC-3410 shown with BP-70E



REC-3410



## SPECIFICATIONS

Ram stroke : 25 mm  
 (Jaw opening)  
 Motor : 14.4 VDC

Reservoir capacity :  
 170 cc  
 Force at die face :  
 106 kN

## SIZE

395 (L) x 275 (H) x 90 (W) mm

## WEIGHT

7.5 kg (less battery)

## ACCESSORIES

Shoulder strap, Carrying case,  
 Battery and charger  
 (See selection Battery &  
 Compability Chart)

## FEATURES

The REC-3410 is the battery operated 12 ton tool to accommodate 12 ton U-type dies widely used in the industry.

Portability and handling are improved and it now features a larger handle opening with a rocker type advance/retract switch located on top of the handle for 1-finger operation. It also incorporates a built-in foot base with finger indents for easier handling when working overhead or under-ground.

The rapid advance system reduces tool run time, giving you more crimp cycles per battery charge.

The number of crimps per charge for maximum conductor :  
 55 crimps / BP-70MH

This tool is designed to accommodate U-type dies for applying compression fittings to copper, aluminum and ACSR conductors.

## REMARKS

Dies are sold separately.  
 Specify the manufacturer's die and connector numbers.  
 Specify charger input voltage.

- \* Battery operated compression tool
- \* 25 mm jaw opening C head
- \* LED lights when battery capacity becomes low
- \* Well balanced & compact design
- \* Larger handle opening with rocker-type switch
- \* Built-in foot base with finger indents
- \* New rapid advance system
- \* 14.4 VDC powerful motor
- \* Right or left handed operation
- \* Accepts all dies used for Alcoa, Burndy, T&B, Klauke, Cembre and Blackburn 12 ton U-type dies
- \* 350 degree swivel head
- \* Optional DC charger
- \* Quality backed by ISO9001

MODEL No.

# REC-3430

Accepts existing **12 ton** U-type dies



REC-3430 shown with BP-70E

## SPECIFICATIONS

Ram stroke : 30 mm  
(Jaw opening)  
Motor : 14.4 VDC

Reservoir capacity :  
170 cc  
Force at die face :  
106 kN

## SIZE

410 (L) x 275 (H) x 90 (W) mm

## WEIGHT

7.8 kg (less battery)

## ACCESSORIES

Shoulder strap, Carrying case,  
Battery and charger  
(See selection Battery &  
Compatibility Chart)



REC-3430



## FEATURES

The REC-3430 is the battery operated 12 ton class compression tool to accommodate 12 ton U- type dies widely used in the industry.

Portability and handling are improved and it now features a larger handle opening with a rocker type advance/retract switch located on top of the handle for 1-finger trigger operation. The handle opening and rocker type switch is large enough for gloved hands. It also incorporates a built-in foot base with finger indents for easier handling when holding the tool with both hands

The number of crimps per charge for maximum size conductor : 55 crimps / BP-70MH

This tool is designed to accommodate U-type dies for applying compression fittings to copper, aluminum and ACSR conductors.

## REMARKS

Dies are sold separately.  
Specify the manufacturer's die and connector numbers.  
Specify charger input voltage.

- \* Battery operated compression tool
- \* 30 mm jaw opening C head
- \* LED lights when battery capacity becomes low
- \* Well balanced & compact design
- \* Larger handle opening with rocker-type switch
- \* Built-in foot base with finger indents
- \* New rapid advance system
- \* 14.4 VDC powerful motor
- \* Right or left handed operation
- \* Accepts all dies used for Alcoa, Burndy, T&B, Klauke, Cembre and Blackburn 12 ton U-type dies
- \* 350 degree swivel head
- \* Optional DC charger
- \* Quality backed by ISO9001

MODEL No.

# REC-3510

 Accepts existing **12 ton** U-type dies


REC-3510 shown with BP-70R



REC-3510 shown with REC-3430 &amp; REC-3410



## SPECIFICATIONS

Ram stroke : 42 mm  
(Jaw opening)  
Motor : 14.4 VDC

Reservoir capacity :  
170 cc  
Force at die face :  
106 kN

## SIZE

440 (L) x 275 (H) x 90 (W) mm

## WEIGHT

8.5 kg (less battery)

## ACCESSORIES

Shoulder strap, Carrying case,  
Battery and Charger  
(See selection Battery &  
Compability Chart)

## FEATURES

The REC-3510 is the third generation of this model ROBO tool and has the largest jaw opening of all of our battery operated 12 ton compression tools.

The opening is 42 mm which will accept mid-span copper and aluminum sleeves and cables up to 750 KCM. This tool accepts all "U" type dies available on the market.

Portability and handling are made easier because the REC-3510 system is self contained and compact. It features a larger handle opening with a rocker-type advance/retract switch located on top of the handle for 1-finger trigger operation.

The number of crimps per charge for maximum size conductor :  
55 crimps / BP-70MH

This tool is designed to accommodate U-type dies for applying compression fittings to copper, aluminum and ACSR conductors.

## REMARKS

Dies are sold separately.  
Specify charger input voltage.

- \* Battery operated compression tool
- \* 42 mm jaw opening C head
- \* LED lights when battery capacity becomes low
- \* Well balanced & compact design
- \* Larger handle opening with rocker-type switch
- \* Built-in foot base with finger indents
- \* New rapid advance system
- \* 14.4 VDC powerful motor
- \* Right or left handed operation
- \* Accepts all dies used for Alcoa, Burndy, T&B, Klauke, Cembre and Blackburn 12 ton U-type dies
- \* 350 degree swivel head
- \* Optional DC charger
- \* Quality backed by ISO9001

MODEL No.

# REC-3610

Accepts existing 15 ton P type dies  
as well as 12 ton U-type dies



REC-3610 shown with BP-70MH



REC-3610 with P-type dies



## FEATURES

The REC-3610 has the largest output and piston travel among all of our battery operated compression tools.

The piston travel is 54mm which accepts mid-span copper and aluminum sleeves and cables up to 1,500 KCM. This tool accepts all "U" type dies when used with an adapter.

Portability and handling are made easier because the REC-3610 system is self-contained and compact. It features a new, larger handle opening with a rocker type advance/retract switch located on top of the handle for one finger trigger operation.

The number of crimps per charge for maximum size conductor :  
55 crimps / BP-70E

## SPECIFICATIONS

Ram stroke : 50mm  
Motor : 14.4 VDC

Reservoir capacity :  
170cc  
Force at die face :  
134 kN

## SIZE

480 (L) x 275 (H) x 90 (W) mm

## WEIGHT

10.0 kg (less battery)

## ACCESSORIES

Shoulder strap, Steel carrying case,  
Battery and Charger  
(See selection Battery &  
Compatibility Chart)

## REMARKS

Dies are sold separately.  
Specify charger input voltage.

- \* Battery operated compression tool
- \* 50mm Jaw opening closed head
- \* LED lights when battery capacity becomes low
- \* Well balanced & compact design
- \* Larger handle opening with rocker-type switch
- \* Built-in foot base with finger indents
- \* New rapid advance system
- \* 14.4 VDC powerful motor
- \* Right or Left handed operation
- \* Accepts 15 ton Burndy P type dies
- \* Accepts 12 ton U-type dies when used with die adapter
- \* 180 degree swivel head
- \* Optional DC charger
- \* Quality backed by ISO9001



MODEL No.

# REC-5200MX

Non-insulated terminals: 14, 22, 38, 60, 70, 80, 100, 150, 200 mm<sup>2</sup>  
 Angle beam fabricating attachments and many other attachments



REC-5200MX shown with BP-70MH



REC-5200MX



## FEATURES

The REC-5200MX is a multipurpose battery operated tool suitable for various types of crimping, cutting, punching and etc.

Available attachments are 8 kinds and the REC-5200MX comes standard with rotary type crimping head, 200 mm<sup>2</sup> Yoke-nest and indentors suitable for up to 200 mm<sup>2</sup> crimping terminals.

Attachments are mounted on the tool head by inserting two lock pins located at the cylinder head for easy changeover.

The control buttons are activated by only one hand so that other hand is always free to hold working material.

Electronic circuit board with LED indicates compression status and battery capacity.

## SPECIFICATIONS

Ram stroke : 17 mm  
 Motor : 14.4 VDC

Reservoir capacity : 100 cc  
 Force at die face : 127 kN

## SIZE

356 (L) x 326 (H) x 70 (W) mm

## WEIGHT

5.1 kg (less battery)

## ACCESSORIES

Shoulder strap,  
 Plastic carrying case,  
 Indenting dies,  
 Nest : Nest wheel & 200 die  
 Indentor : 14, 22, 38-70, 80-150, 200 (5) pieces  
 Battery and Charger  
 (See selection Battery & Compability Chart)

## REMARKS

Specify charger input voltage.

Following attachments are available separately. See LIC-5200MX attachment page.

- 200AT-13WT : Threaded bar cutting attachment
- 200AT-S16 : Rebar cutting attachment
- 200AT-50YC : Cable cutting attachment
- 200AT-16B : T connector compression dies
- 200AF-HEX : Hexagonal compression Dies
- 200AT-9PD : Knock out punching attachment
- 200AT-AP18 : Angle beam punching attachment
- 200AT-DCM : Raceway cutting

MODEL No.

**REC-55PDF**

Punching capacity : 3.2 mm thick mild steel or 1.6 mm stainless steel with 104 mm (4") holes



REC-55PDF shown with BP-70EI



Example of punch set

**FEATURES**

The REC-55PDF is a battery operated punch driver with swivel head for easy access to tight enclosed control panels. It gives clean perforation through 3.2mm thick mild steel or 1.6mm stainless steel with 104mm (4") holes.

This tool is ideal for working on control panels.

See SH-10(A)P and SH-10(B)P page 92 for punch sizes.

The number of perforations per charge for 3" hole on 3.2mm steel :  
52 perforations / BP-70MH

**SPECIFICATIONS**

Ram stroke : 22 mm  
Motor : 14.4 VDC

Reservoir capacity :  
100 cc  
Output force :  
73 kN

**SIZE**

328 (L) x 254 (H) x 70 (W) mm

**WEIGHT**

3.8 kg (less battery)

**ACCESSORIES**

Standard Accessories:

Shoulder strap,  
Double molded carrying case,  
Setting threads (3/4 and 3/8),  
Punches are sold separately,  
Collar ( L, M, S, SS )  
Battery and charger,  
(See selection Battery &  
Compatibility Chart)

※ Punch set is sold separately.

**REMARKS**

Specify charger input voltage.

Ordering information :

REC-55PDF	standard accessories only
REC-55PDF(A)	above plus A19 to A51 punch set
REC-55PDF(B)	above plus B16 to B54 punch set

Detail information of punch is shown on page of SH-10 (Page 100)

MODEL No.

# REC-S524

Cuts steel materials as well as cables



REC-S524 shown with BP-70MH



Head Cutter Opened



## SPECIFICATIONS

Ram stroke : 24 mm  
 Motor : 14.4 VDC

Reservoir capacity :  
 100 cc  
 Output force :  
 84 kN

## SIZE

316 (L) x 263 (H) x 70 (W) mm

## WEIGHT

4.4 kg (less battery)

## ACCESSORIES

Shoulder strap,  
 Double molded carrying case,  
 Battery and charger,  
 (See selection Battery &  
 Compatibility Chart)

## REMARKS

Specify charger input voltage.

Cutting capacity : # of cuts

Material		BP-70MH
Wire rope	6x7 : 18mm	82
	6x12 : 24mm	105
	6x19 : 24mm	67
Soft steel bar	: 20mm	90
Re-bar	: 16mm	120
Cu strands	: 24mm	120
Al strands	: 24mm	150
ACSR	: 24mm	142
Guy wire	1x7 : 20mm	127
	1x19 : 20mm	120
CCP cable	: N/A	

## FEATURES

The REC-S524 was designed to cut the toughest steel used in construction today.

With the pull of the trigger, you can cut ACSR cables up to 24mm, and guy wires to 20mm.

The specially designed flip-top latch and rotating head provide exceptional ease of use and maneuverability in tight working quarters.

The REC-S524 has an overload bypass which will kick out when tool reaches 84kN of output.

MODEL No.

# REC-S540

Cuts steel materials as well as cables.



REC-S540 shown with BP-70MH

## SPECIFICATIONS

Ram stroke : 40 mm  
 Motor : 14.4 VDC

Reservoir capacity : 135cc  
 Output force : 70 kN

## SIZE

442 (L) x 351 (H) x 78 (W) mm

## WEIGHT

6.1 kg (less battery)

## ACCESSORIES

Shoulder strap,  
 Double molded carrying case,  
 Battery and charger  
 (See selection Battery & Compatibility Chart)



REC-S540 (Head Cutter Opened)



## FEATURES

The REC-S540 was designed to cut the ACSR cables used in transmission line construction work. It is now equipped with rapid ram advance mechanism for faster operation.

With the pull of the trigger, you can cut ACSR cables up to 38mm, guy wires to 20mm, and wire ropes to 22mm.

The rotating head provides exceptional ease of use and maneuverability in tight working quarters.

The lock pin type head allows the cutter head to open widely for easy insertion of cutting material.

The REC-S540 has an overload bypass which will kick out when tool reaches 68kN of output.

## REMARKS

Specify charger input voltage.

Cutting capacity : # of cuts

Material		BP-70MH
Wire rope	6 x 7	60
	6 x 12	82
	6 x 19	45
Soft steel bar	20mm	60
Re-bar	16mm	60
Cu strands	40mm	42
Al strands	40mm	52
ACSR	38mm	45
Guy wire	1 x 7	120
	1 x 19	72
CCP cable	N/A	

MODEL No.

**REC-530Y**

Al strands : 28mm(240mm<sup>2</sup>)  
 Cu strands : 28mm(250mm<sup>2</sup>)  
 ACSR : 19mm(120mm<sup>2</sup>) (Single strand steel core)



REC-530Y shown with BP-70MH


**SPECIFICATIONS**

Ram stroke : 21mm  
 Motor : 14.4 VDC

Reservoir capacity :  
 100cc  
 Output force :  
 60 kN

**SIZE**

372(L) x 265(H) x 70(W) mm

**WEIGHT**

4.1kg (less battery)

**ACCESSORIES**

Shoulder strap,  
 Plastic carrying case,  
 Battery and charger  
 (See selection Battery &  
 Compatibility Chart)

**REMARKS**

Specify charger input voltage.

- \* Battery operated scissors type cutter
- \* LED lights when battery capacity becomes low
- \* Light weight and slim design
- \* Pistol type design
- \* 14.4VDC powerful motor
- \* Right or Left handed operation
- \* 180 degrees swivel head
- \* Optional DC charger
- \* Quality backed by ISO9001

**FEATURES**

The REC-530Y is a scissors type cutter used to cut ACSR cables up to 556KCM, as well as copper cables to 750KCM and aluminum cables up to 30mm outer diameter.

All cuts are clean with a minimal amount of cable distortion, which allows for easy connector installation on cables.

The head can be rotated 180 degrees for greater maneuverability in working quarters.

The keeper plate prevents jaws from spreading apart when cutting ACSR.

The number of cuts per charge for 19mm ACSR (336 KCM) :  
 230 cuts/BP-70MH

MODEL No.

# REC-585YC

Cuts CCP cables up to 85 mm  
 CU and AL strands upto 60mm



REC-585YC shown with BP-70MH



## SPECIFICATIONS

Blade opening : 85mm  
 Motor : 14.4 VDC

Reservoir capacity :  
 135 cc  
 Output force :  
 80 kN

## SIZE

518(L) x 340(H) x 87(W) mm

## WEIGHT

6,4 kg (less battery)

## ACCESSORIES

Shoulder strap, Grip,  
 Steel carrying case,  
 Battery and charger  
 (See selection Battery &  
 Compatibility Chart)

## FEATURES

The REC-585YC scissors type cutter was designed to cut various cables used in the industry today. It is equipped with rapid ram advance mechanism for faster operation.

With a pull of the trigger, you can cut Cu and Al cables up to 60mm and CCP cables up to 85mm.

The scissors type cutter head provides exceptional ease of use and maneuverability when making many cuts.

The REC-585YC has an overload bypass which will kick out when the tool reaches 80kN of output.

## REMARKS

Specify charger input voltage.

Cutting capacity : # of cuts

Material	BP-70MH
Polyethylene cable 600V-CV325mm2 (60mm OD) 3 core	22
600V-CV150mm2 (46mm OD) 3 core	60
600V-CV500mm2 (38mm OD)	45
Multi-core vinyl insulation cable VVR150mm2 (47mm OD) 3 core	60
CCP Cable (85mm OD)	45
Lead sheathed cable (85mm OD)	45

MODEL No.

**REC-S3550**

 Cuts steel materials as well as cables  
up to 54mm


REC-S3550 shown with BP-70MH


 REC-S3550 shown with 1,000mm<sup>2</sup> copper cable

**SPECIFICATIONS**

Ram stroke : 56 mm  
 Motor : 14.4 VDC  
 Reservoir capacity : 280 cc  
 Output force : 120 kN

**SIZE**

490 (L) x 275 (H) x 90 (W) mm

**WEIGHT**

9.6 kg (less battery)

**ACCESSORIES**

Shoulder strap,  
 Steel carrying case,  
 Battery and charger  
 (See selection Battery &  
 Compatibility Chart)

**FEATURES**

The REC-S3550 is designed to cut the toughest steel used in construction today

Portability and handing are made easier because the REC-S3550 is self-contained and compact. It features a new, larger handle opening with a rocker-type advance/retract switch located on top of the handle for 1-finger operation

Guillotine type cutting for less jamming than shear type cutting

180 degree rotating head allows for easy cutting positions

Lock pin type cutter head

**REMARKS**

Cutting of piano wire is prohibited.  
 Cutting capacity

- \* Wire rope 6x7 : 25mm
- \* Wire rope 6x12 : 30mm
- \* Wire rope 6x19 : 30mm
- \* Soft steel bar : 22mm
- \* Reinforcing rod : 19mm
- \* Cu strands : 54mm
- \* Al strands : 54mm
- \* ACSR : 54mm
- \* Guy wire 1x7 : 15mm
- \* Guy wire 1x9 : 20mm
- \* CCP cable : N/A
- \* LED indicates when battery capacity becomes low
- \* Well balanced & compact design
- \* Built-in foot base with finger indents
- \* New rapid advance system
- \* Larger handle opening with finger rocker-type switch
- \* Right or left handed operation
- \* Optional DC charger
- \* Quality backed by ISO9001

MODEL No.

# REC-50

Maximum cutting diameter : Nonferrous 50 mm



REC-50 shown with BP-70E

## SPECIFICATIONS

Drive unit : 14.4V DC Motor

## SIZE

105 (L) x 375 (H) x 115 (W) mm

## WEIGHT

2.0 kg (less battery)

## ACCESSORIES

Steel carrying case,  
Battery and charger  
(See selection Battery &  
Compatibility Chart)



REC-50



## FEATURES

The REC-50 was specifically designed for cutting the toughest copper and aluminum cables in a limited amount of space. Cuts are clean with minimal cable distortion and comfortably fits into a gloved hand. Repetitive ratcheting movement is entirely eliminated. Just a squeeze of the rocker arm trigger is all it takes to cut your toughest copper cable.

It is a heavy duty cable cutter for nonferrous cables up to 50 mm O.D.. A powerful gear reduction motor pulls a movable blade through the toughest copper cable. It is equipped with a circuit breaker for overloading protection.

## REMARKS

Cutting capacity : # of cuts

Material	BP-70MH
Polyethylene cable	
600V-CV325 mm <sup>2</sup> (31 mm OD)	: 142
600V-CV150 mm <sup>2</sup> x 3 (46 mm OD)	: 75
600V-CV500 mm <sup>2</sup> (38 mm OD)	: 60
6KV-CVT500mm <sup>2</sup> (45 mm OD)	: 45
Multi-core vinyl insulation cable	
VVR150 mm <sup>2</sup> (47 mm OD) 3 core	: 75
Soft copper cable	
IV500 mm <sup>2</sup> (35 mm OD)	: 75
Hard copper cable	
150 mm <sup>2</sup> (21 mm OD)	: 240



MODEL No.

# REC-54

Maximum cutting diameter : Nonferrous 54 mm and  
Steel supported 400 pair telecom cable



REC-54 shown with BP-70I



REC-54 shown with SS cable



## SPECIFICATIONS

Drive unit : 14.4V DC Motor

## SIZE

105 (L) x 410 (H) x 115 (W) mm

## WEIGHT

2.5 kg (less battery)

## ACCESSORIES

Steel carrying case,  
Battery and charger  
(See selection Battery &  
Compatibility Chart)

## FEATURES

The REC-54 was designed to cut SS cable or overhead CCP cable with Steel strand Support.

It cuts both nonferrous cables and steel strands. Like the REC-50, cuts are clean with minimal cable distortion.

A circuit breaker for overloading protection prevents motor overheating when attempting to cut the material over its capacity.

## REMARKS

Cutting capacity : # of cuts

Material	BP-70MH
Polyethylene cable	
600V-CV325 mm <sup>2</sup> (31 mm OD)	: 90
Multi-core vinyl insulation cable	
VVR150 mm <sup>2</sup> (47 mm OD) 3 core	: 45
SB-ACSR120 mm <sup>2</sup> (18.6 mm OD)	: 142
Hard aluminum cable	
HAL-OC400 mm <sup>2</sup> (31.9 mm OD)	: 120
Hard copper cable	
OE-OC150 mm <sup>2</sup> (21 mm OD)	: 165
SS cable	
0.4 mm 400 CCP-F-SS(CR) cable	: 142
LCCP cable without support wire	
54 mm outer diameter	: 187

MODEL No.

**REC-54AC**

Maximum cutting diameter : Nonferrous 54 mm



REC-54AC shown with BP-70E

**SPECIFICATIONS**

Drive unit : 14.4V DC Motor

**SIZE**

105 (L) x 410 (H) x 115 (W) mm

**WEIGHT**

2.5 kg (less battery)

**ACCESSORIES**

Steel carrying case,  
Battery and charger  
(See selection Battery &  
Compatibility Chart)



REC-54AC

**FEATURES**

The REC-54AC was specifically designed for cutting the toughest copper and aluminum cables in a limited amount of space. Cuts are clean with minimal cable distortion. Repetitive ratcheting movement is entirely eliminated. Just a squeeze of the rocker arm trigger is all it takes to cut your toughest copper cable.

It is a heavy duty cable cutter for nonferrous cables up to 54mm O.D.. A powerful gear reduction motor pulls a movable blade through the toughest copper cable. It is equipped with a circuit breaker for overloading protection.

**REMARKS**

Cutting capacity : # of cuts

Material	BP-70MH
Polyethylene cable	
600V-CV325 mm <sup>2</sup> (31 mm OD)	: 142
600V-CV150 mm <sup>2</sup> (46 mm OD) 3 core	: 75
600V-CV500 mm <sup>2</sup> (38 mm OD)	: 60
6KV-CV1500 mm <sup>2</sup> (45 mm OD)	: 45
Multi-core vinyl insulation cable	
VVR150 mm <sup>2</sup> (47 mm OD) 3 core	: 75
Soft copper cable	
IV500 mm <sup>2</sup> (35 mm OD)	: 75
Hard copper cable	
150 mm <sup>2</sup> (21 mm OD)	: 225

MODEL No.

**REC-5630**

Up to 32mm outer diameter connector



REC-5630 shown with BP-70MH


**SPECIFICATIONS**

Ram stroke : 29 mm  
Opening between nibs : 32 mm

Reservoir capacity :  
100 cc  
Output force :  
60 kN

**SIZE**

369(L) x 280(H) x 70(W) mm

**WEIGHT**

4.7kg (less battery)

**ACCESSORIES**

Shoulder strap,  
Double molded carrying case,  
Battery and charger  
(See selection Battery &  
Compatibility Chart)

**REMARKS**

Specify charger input voltage.

- \* Battery operated dieless crimping tool
- \* Rapid ram advance mechanism
- \* Light weight aluminum forged head
- \* LED lights when battery capacity becomes low
- \* Light weight and slim design
- \* Pistol type housing
- \* 14.4VDC powerful motor
- \* Right or Left handed operation
- \* 360 degree swivel head
- \* Optional DC charger

**FEATURES**

The REC-5630 is a battery operated hand held dieless crimping tool used to compress Anderson type connectors up to 500KCM.

Three movable nibs push connectors against the top fixed nib. As a result, four indentations are made into the connector.

This tool is designed to install Anderson type connectors. Consult your connector manufacturer for dieless applications.

The number of crimps per charge for 500KCM connector : 120 crimps / BP-70MH

MODEL No.

**REC-5750**

Up to 750KCM Anderson type connector



REC-5750 shown with BP-70E

**FEATURES**

The REC-5750 is a flip-top, battery operated, hand held dieless crimping tool used to compress Anderson type connectors up to 750KCM.

The flip top latch opens to allow for easy cable positioning and removal.

Three movable nibs push connectors against the top fixed nib. As a result, four indentations are made into the connector.

Since this tool is designed to install Anderson type connectors, it is highly recommended to consult with connector manufacturer for dieless applications.

The number of crimps per charge for 600KCM copper connector : 97 crimps / BP-70MH

**SPECIFICATIONS**

Ram stroke : 31.5 mm  
Opening between nibs : 36 mm

Reservoir capacity :  
100 cc  
Output force :  
60 kN

**SIZE**

383(L) x 340(H) x 75 (W) mm

**WEIGHT**

4.7 kg (less battery)

**ACCESSORIES**

Shoulder strap,  
Double molded carrying case,  
Battery and charger  
(See selection Battery &  
Compatibility Chart)

**REMARKS**

Specify charger input voltage.

- \* Battery operated dieless crimping tool
- \* Rapid ram advance mechanism
- \* Light weight aluminum forged head
- \* LED lights when battery capacity becomes low
- \* Light weight and slim design
- \* Pistol type housing
- \* 14.4VDC powerful motor
- \* Right or Left handed operation
- \* 360 degree swivel head
- \* Optional DC charger

MODEL No.

# REC-P2

68.5 Mpa battery operated hydraulic pump with remote control



REC-P2 shown with OT-MWB

## SPECIFICATIONS

- Motor : 28.8 VDC
- Oil delivery :
  - Low pressure
  - 1.8 liter / min
  - High pressure
  - 0.4 liter / min
- Reservoir volume : 1,000 cc (60 cubic inch)
- Oil pressure : 68.5 Mpa or 10,000 PSI

## SIZE

272 (L) x 304 (H) x 143 (W) mm

## WEIGHT

14.0 kg (less battery)

## ACCESSORIES

- Remote control switch,
- 2 meter wire wound rubber hose,
- Battery and charger
- OT-MWB:Lithium Ion Battery 28V 3.0Ah
- OT-MWC:Lithium Ion Charger 220V-240V



Hydraulic Heads

## FEATURES

The REC-P2 is a battery powered hydraulic pump which has a 1,000cc or 60 cubic inch reservoir capacity. Its performance is powerful and closer to AC powered pump R14E-F1.

Quiet and powerful 28.8 VDC motor provides intermittent duty hydraulic power source to a remote head up to 60 ton capacity.

The remote control permits operator to advance, retract and stop the piston at any desired position.

1,000 cc of reservoir volume is sufficient enough to operate a 60 ton compression head with optional 3 meter hose.

OT-MWB 28VDC Lithium ion Battery warrants 2 year or 2,000cycle charges.

## REMARKS

- \* Adjustable output pressure to 68.5 Mpa
- \* 360 degree swivel joint for hose maneuverability
- \* Durable steel cover
- \* Wired remote control switch



REC-P2 shown with EP-60S

MODEL No.

**SB-3UK**

## Shear Bolt Impact Wrench



SB-3UK

**SPECIFICATIONS**

Torque : 196 N.m  
 Speed : 0~2,200 rpm  
 Motor : 14.4 VDC  
 Socket Retainer : 1/2"

**SIZE**

350 (L) x 180 (H) x 75 (W) mm

**WEIGHT**

1.6 kg (less battery)

**ACCESSORIES**

Double molded carrying case,  
 Battery and charger  
 (See selection Battery &  
 Compability Chart)

**REMARKS**

Specify charger input voltage.

\* Battery operated impact wrench  
 for shear bolts

\* 196 N·m or 143 ft·lbs torque

\* Variable speed to 2,200 rpm

\* 1/2" square drive

\* Short body length for tight space  
 application

\* Well balanced and light weight

\* Regular E-Robo series 14.4 V  
 battery

\* Quality backed by ISO 9001  
 Quality Management System

**FEATURES**

The SB-3UK is a battery operated impact wrench especially designed to torque down the shear bolts for electrical connection use.

The tool features a unique shape to reduce its length for easy access to tight space.

It develops 196 N·m or 143 ft·lbs of torque and features variable speed to 2,200 rpm.

As it was designed for electrical work, there is no opening for air circulation. Continuous use will overheat and damage the tool. Rest the tool after 20 bolts are sheared.



SB-3UK



MODEL No.  
**BP-70I**

Compatible with all 14.4V E-Robo series tools  
1.3Ah Capacity



BP-70I Intelligent battery



BP-70I with CH-70DC 1H Charger

### FEATURES

"Smart" Replacement Battery

The BP-70I intelligent battery is the same as the BP-70R with the addition of LED display. The LED on the side of the battery allows the user to monitor the status of the battery's total life and power in between charges.

It also allows visual evaluation of battery power while in use.

When not used with the tool, just press the check button to get an instant read-out of charge remaining.

### SPECIFICATIONS

Output voltage : 14.4 VDC  
Capacity : 1.3Ah  
Type : Nickel Cadmium  
Charge time :  
15 min with CH-35R or CH-35EMC  
LED indicator : Capacity,  
recharge cycles

### SIZE

100 (L) x 137 (H) x 75 (W) mm

### WEIGHT

750 g

### REMARKS

- \* The battery has a limited life. When capacity becomes about 1 / 2 of the original capacity, the battery should be replaced.
- \* If the battery is stored without being charged, natural drainage will cause the power to be reduced. Be sure to charge the battery every 3 months.
- \* The battery will need to be fully charged before first time use.
- \* Remaining battery capacity level To check remaining battery capacity level, press the check button. The remaining battery capacity level is displayed for about 5 seconds. Recharge the battery when the bottom light starts to blink.
- \* Charging level While the battery is charged, the indicator lights up as the capacity level increases.
- \* Number of charges Keep pressing the check button for 10 seconds to show number of charges performed. LED pattern shows number in binary system.

MODEL No.

**BP-70E**

Compatible with all 14.4V E-Robo series tools  
1.9 Ah Capacity



BP-70E High Capacity Battery

**SPECIFICATIONS**

Output voltage : 14.4 VDC  
Capacity : 1.9 Ah  
Type : Nickel Cadmium  
Charge time :  
25 min with CH-35R or CH-35EMC

**SIZE**

100 (L) x 137 (H) x 70 (W) mm

**WEIGHT**

800 g



BP-70E (Orange latch for 1.9Ah)

**FEATURES**

Standard Replacement Battery

The BP-70E is a standard replacement battery with high capacity of 1,900 mAh. Comparing with our BP-70R, it has 46% more of capacity. It means 46% more of crimp cycles and cutting cycles per charge.

The battery's life expectancy is approximately 600 recharges.

**REMARKS**

- \* The battery has a limited life. When capacity becomes about 1/2 of the original capacity, the battery should be replaced.
- \* If the battery is stored without being charged, natural drainage will cause the power to be reduced. Be sure to charge the battery every 3 months.
- \* When the battery is used for the first time, the battery will need to be fully charged before use.
- \* Cycles per charge will vary depending on the type and size of the material being cut or compressed.



MODEL No.

**BP-70EI**

 Compatible with all 14.4V E-Robo series tools  
 1.9 Ah Capacity


BP-70EI High Capacity Intelligent Battery



BP-70EI (Orange latch for 1.9Ah)

### FEATURES

The BP-70EI intelligent battery is the same as the BP-70E with the addition of LED display. The LED on the side of the battery allows the user to monitor the status of battery's total life and power in between charges.

Comparing with our BP-70R, it has 46% more of capacity. It means 46% more of crimp cycles and Cutting cycles per charge.

It also allows visual evaluation of battery power while in use or without use. When not used with the tool, just press the check button to get an instant read-out of charge remaining.

### SPECIFICATIONS

Output voltage : 14.4VDC  
 Capacity : 1.9Ah  
 Type : Nickel Cadmium  
 Charge time :  
 25 min with CH-35R or CH-35EMC  
 LED indicator : Capacity,  
 recharge cycles

### SIZE

100 (L) x 137 (H) x 75 (W) mm

### WEIGHT

820 g

### REMARKS

- \* The battery has a limited life. When capacity becomes about 1/2 of the original capacity, the battery should be replaced.
- \* If the battery is stored without being charged, natural drainage will cause the power to be reduced. Be sure to charge the battery every 3 months.
- \* When the battery is used for the first time, the battery will need to be fully charged before use.
- \* Remaining battery capacity level To check remaining battery capacity level, press the check button. The remaining battery capacity level is displayed for about 5 seconds. Recharge the battery when the bottom light starts to blink.
- \* Charging level While the battery is charged, the indicator lights up as the capacity level increases.
- \* Number of charges Keep pressing the check button for 10 seconds to show number of charges performed. LED pattern shows number in binary system.

MODEL No.

**BP-70MH**

Compatible with all 14.4 V E-Robo series tools  
3.0Ah Capacity (Nickel-metal hydride battery)

**SPECIFICATIONS**

Output voltage : 14.4 VDC  
Capacity : 3.0 Ah  
Type :  
Nickel-metal hydride battery  
Charge time : 40 min with CH-35R  
or CH-35EMC

**SIZE**

100(L) x 140(H) x 70(W) mm

**WEIGHT**

850g



BP-70MH High Capacity Battery



BP-70MH shown with CH-35R  
(light blue Top Cover For 3.0 Ah)

**FEATURES**

High Capacity Nickel metal hydride battery.

The BP-70MH is a standard replacement battery with high capacity of 3,000 mAh.

Comparing with our BP-70R, it has 230% more of capacity. It means 230% more of crimp cycles and cutting cycles per charge.

The battery's life expectancy is approximately 600 recharges.

**REMARKS**

- \* The battery has a limited life. When capacity becomes about 1/2 of the original capacity, the battery should be replaced.
- \* If the battery is stored without being charged, natural drainage will cause the power to be reduced. Be sure to charge the battery every 3 months.
- \* The battery will need to be fully charged before first time use.
- \* Cycles per charge will vary depending on the type and size of the material being cut or compressed.

MODEL No.

**CH-3FC2**

Regular battery charger



CH-3FC2 1 hour Charger



CH-3FC2 shown with BP-70R

**SPECIFICATIONS**

Input voltage : CH-3TC (120V),  
 CH-3FC2 (220V / 240V switchable)  
 Capacity : 50VA  
 Charge time :  
 1 hour for BP-70R or BP-70I,  
 90 minutes for BP-70E or BP-70EI,  
 3 hours for BP-250R1

**SIZE**

212 (L) x 95 (H) x 105 (W) mm

**WEIGHT**

1.9 kg

**FEATURES**

Standard One Hour Battery Charger

The CH-3FC2 is one hour charger for the BP-70R and BP-70I.

For the BP-70E and BP-70EI, charge time is 90 minutes.

**REMARKS**

- \* The LED indicator lights up and stays while charging.
- \* The indicator will go out when completed.
- \* It charges the BP-70R, BP-70I, BP-70E, BP-70EI only.  
Do not use the charger for any other devices.

MODEL No.

**CH-35R or  
CH-35EMC**

40 minutes quick charger for BP-70MH



CH-35R 40 minutes Charger with BP-70MH



CH-35EMC shown with BP-70MH

**FEATURES**

40 Minutes Charger for High capacity battery, BP-70MH.

It also charges BP-70E and BP-70EI in 25 minutes.

CH-35R is UL and CSA listed.  
CH-35EMC is an EMC approved charger in accordance with related CE and EMC directives.

**SPECIFICATIONS**

Input voltage :  
CH-35R(120V)  
CH-35EMC(230V)

Capacity :  
CH-35R (220VA)  
CH-35EMC (230VA)

**SIZE**

200(L) x 95(H) x 115(W)mm

**WEIGHT**

900g

**REMARKS**

Stand by - RED Blinking  
Under charging - GREEN Lighting  
Completion - ORANGE Lighting  
High or Low temperature - RED Lighting  
Refresh charging - GREEN Blinking  
Life end of battery - RED fast Blinking  
Charger out of order- NO Lighting

\* It charges BP-70R, BP-70I, BP-70E, BP-70EI, BP-70MH only.

\* Charge time  
15 min for BP-70R or BP-70I  
25 min for BP-70E or BP-70EI  
40 min for BP-70MH

\* Refresh Charge time  
6 hours for BP-70R or BP-70I  
8 hours for BP-70E or BP-70EI  
10 hours for BP-70MH

\* Do not use charger for any other devices.

MODEL No.

# CH-70DCH

DC charger for E-Robo series batteries



CH-70DCH DC Charger with BP-70MH



CH-70DCH shown with BP-70MH

## SPECIFICATIONS

Input voltage : 12VDC or 24 VDC  
 Rated input : 39 Watts

## SIZE

200 (L) x 95 (H) x 115 (W) mm

## WEIGHT

640 g

## FEATURES

CH-70DCH is a 12/24V DC charger

Can be plugged directly into an automotive cigarette lighter socket and has a built in overload fuse protector

Engine should be running while charging the battery

## REMARKS

\* LED indicator lights up and stays on while charging

\* Indicator will go out when completed

\* Charges batteries BP-70R, BP-70I, BP-70E, BP-70EI, BP-70MH.  
 Do not use the charger for any other devices

\* Charge time  
 BP-70R, BP-70I : 45 minutes  
 BP-70E, BP-70EI : 70 minutes  
 BP-70MH : 100 minutes

\* Quality backed by ISO 9001

MODEL No.

**EP-150A**

Non-insulated terminals :  
14, 22, 38, 60, 70, 80, 100, 150 mm<sup>2</sup>



EP-150A



Crimped sample

**FEATURES**

The EP-150A is a hydraulic indenting tool for non-insulated terminals and sleeves up to 150mm<sup>2</sup>.

When rolled-and-blazed connectors are installed, indenting crimp is applied. Indentation is made on the seam of connector for appropriate mechanical and electric characteristics of connected conductors.

The EP-150A is so designed that connected conductors meet JIS requirement as well as requirement for the tool itself.

**SPECIFICATIONS**

- \* Two stage pumping
- \* Relief valve
- \* Reservoir capacity : 83cc

Output force :  
90 kN

**SIZE**

512 (L) mm

**WEIGHT**

3.7 kg

**ACCESSORIES**

Dedicated Indentor :  
14, 22, 38-70,  
80-150 mm<sup>2</sup> (4 pieces),  
Double molded  
carrying case

**REMARKS**

- \* Unique two stage pumping for rapid ram advance
- \* Rotary nest for easy setting

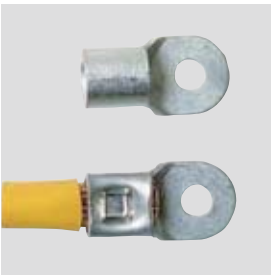
MODEL No.

**12A**

Non-insulated terminals : 8, 14, 22, 38, 60, 70, 80, 100, 150, 180, 200, 325 mm<sup>2</sup>



12A



Crimped sample

**FEATURES**

The 12A is a hydraulic indenting head for non-insulated terminals and sleeves up to 325mm<sup>2</sup>.

When rolled-and-blazed connectors are installed, indenting crimp is applied. Indentation is made on the seam of connector for appropriate mechanical and electric characteristics of connected conductors.

The 12A is designed so that connected conductors meet JIS requirement as well as requirement for the tool itself.

This tool requires an external 700 bar hydraulic pump.

**SPECIFICATIONS**

Maximum input pressure: 700 bar  
Oil volume required : 90 cc

Output force : 226 kN

**SIZE**

280 (L) mm

**WEIGHT**

7.5 kg

**ACCESSORIES**

Steel carrying case with die tray

**REMARKS**

Standard dies included in the set :

Indenter : 22-60, 70-100, 150-325 mm<sup>2</sup> (3 pieces)  
Nest : 60, 80, 100, 150, 180, 200, 325 mm<sup>2</sup> (7 pieces)

Optional dies sold separately :  
Indenter : 8-14 mm<sup>2</sup>  
Nest : 8, 14, 22, 38, 70 mm<sup>2</sup>

MODEL No.

**AC-5ND**Insulated terminals : 2.0 mm<sup>2</sup> (blue)

AC-5ND

**SPECIFICATIONS**

Applicable air pressure :  
0.48–0.58 Mpa  
Air consumption : 34 liters/min at  
30 crimps/min  
Output force :  
12.7 kN at 0.48 Mp air pressure

**SIZE**

215 (L) x 135 (H) x 90 (W) mm

**WEIGHT**

2.7 kg with Foot pedal

**ACCESSORIES**

Standard foot pedal  
Jaws are sold separately



Example of AC-5ND Jaws

**FEATURES**

- \* Capable of crimping several types of terminals up to 5.5mm<sup>2</sup> with interchangeable jaws.
- \* Bench mounted, air operated AC-5ND is suitable for continuous crimping for production line.

AF2 foot pedal adjusts jaw butting time by air timer so that butting time is regulated regardless of operator. This will prevent spring back of crimped terminal and maintain constant crimp heights.

**REMARKS**

Optional Jaw

Jaw #	Applicable terminals
# 1 Jaw	Non-insulated 1.25, 2, 5.5 mm <sup>2</sup>
# 3 Jaw	Insulated 1.25 mm <sup>2</sup>
# 4 Jaw	Insulated 2 mm <sup>2</sup>
# 5 Jaw	Insulated 5.5 mm <sup>2</sup>
# 7A Jaw	Closed End 1.3-3, 2-6 mm <sup>2</sup>
F-200 Jaw	Tab 0.5-1.25, 2 mm <sup>2</sup>
Cutter Jaw	Cu, Al wire 7 mm O.D.



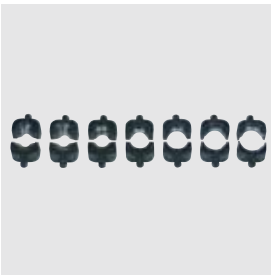
MODEL No.

**15B**

T-11 to T-122 Izumi C-Connectors



15B



Standard die sets (7 sets)

**SPECIFICATIONS**

Two stage Pumping  
 Reservoir capacity : 83 cc  
 Ram stroke : 15 mm

Force at die face :  
 59 kN

**SIZE**

465 (L) mm

**WEIGHT**

3.0 kg

**ACCESSORIES**

T-20, T-26, T-44, T-60,  
 T-76, T-98, T-122 dies

Double molded carrying case

**FEATURES**

The 15B hand hydraulic tool was designed to accommodate compressing Izumi C-Connectors up to T-122.

Light weight, slim design allows installation of C-Connectors in tight quarters.

Two stage pumping system minimizes pumping operation.

Rubber protected C Head and pump handle as well as fiberglass handle protect from accidental flash over.

**REMARKS**

Dies for smaller size connectors and non-insulated terminals available.

\* Two stage pumping action for rapid ram advance

\* Rubber C head cover for protection of accidental flash over

\* Fiberglass handle (Body handle)

\* Rubber protected pump handle

\* 180 degree swivel head

\* Optional dies:  
 1 Dies for C-Connectors  
 T-11 and T-16

2 Dies for non-insulated terminals  
 Indentors : 8-14, 22-60mm<sup>2</sup>  
 Nest : 8, 14, 22, 38, 60mm<sup>2</sup>

MODEL No.

**16B**

T-20 to T-365 Izumi C-Connectors

**SPECIFICATIONS**

Oil volume required : 44 cc  
 Ram stroke : 25 mm

Force at die face :  
 118 kN

**SIZE**

286 (L) mm

**WEIGHT**

4.5 kg

**ACCESSORIES**

T-154, T-190, T-240,  
 T-288, T-365 dies

Steel carrying case

16B



16B shown with carrying case

**FEATURES**

Dies for smaller size C-Connectors and non-insulated terminals available.

Optional dies :

1 Dies for C-Connectors  
 T-20, T-26, T-44, T-60, T-76, T-98,  
 T-122

2 Dies for non-insulated terminals  
 Indentor : 8-14, 22-60, 70-100 mm<sup>2</sup>  
 Nest : 8, 14, 22, 38, 60, 80, 100 mm<sup>2</sup>

**REMARKS**

The #16B is a compression head designed to compress Izumi C-Connectors.

It has a 12 metric ton output suitable to compress C-Connectors up to T-365 (365 mm<sup>2</sup>).

An external 700 bar or 10,000 PSI pumping source is required for operation.

It comes with 5 sets of dies.  
 (T-154, T-190, T-240, T-288 and T-365)

MODEL No.  
**CN-58A**

Accepts BURNDY W dies



CN-58A



CN-58A shown with carrying case

**FEATURES**

The CN-58A was designed to accept both Burndy MD6 W insert dies and Kearney / Blackburn O type / OD58 insert dies.

C framed head allows side loading of connectors and will accommodate conductors up to 24 mm outer diameter.

Saddle dies are Kearney / Blackburn D insert or BURNDY MD6 D3 fixed. These dies can be changed with other Kearney/Blackburn dies.

If Burndy W dies are used, simply slip the Burndy W dies over the saddle dies D3.

**SPECIFICATIONS**

Ram stroke : 19 to 24 mm adjustable  
Reservoir capacity: 60cc  
Force at die face :  
54 kN

**SIZE**

525 (L) x 130 (W) mm

**WEIGHT**

3.2 kg

**ACCESSORIES**

Double molded carrying case

**REMARKS**

Dies are sold separately.

- \* Light weight
- \* Slim design
- \* Adjustable ram stroke for smaller connectors
- \* Positive die hold screws
- \* Two speed pumping for rapid ram advance
- \* Built-in bypass relief valve for audible click when maximum pressure is reached

MODEL No.

**EP-50**

Accepts BEKU type dies  
Up to 150 mm<sup>2</sup> Cu lug



EP-50



EP-50 (One hand operation to hold connector)

**FEATURES**

The EP-50 was designed to accept dies for BEKU type mechanical tool widely used in European countries.

The light weight and slim design is ideal for close quarter application such as connection in the switch box.

Easy latch type closed head provides easy insertion and removal of connectors. The spring loaded pump handle allows one hand pumping until lower die holds connector between dies.

**SPECIFICATIONS**

Ram stroke : 15 mm  
Reservoir capacity :60cc  
Force at die face :  
52 kN

**SIZE**

370 (L) x 130 (W) mm

**WEIGHT**

2.0 kg

**ACCESSORIES**

Double molded carrying case

**REMARKS**

Dies are sold separately.

\* Light weight, compact and slim design

\* Accepts BEKU type dies

\* Yoke and Latch type head for easy die changeover and easy removal of jointed conductor

\* Adjustable ram stroke. 10 - 15mm to minimize pumping action

\* Built-in bypass relief valve

\* Small handle spread

MODEL No.  
**EP-410**

Accepts existing **12 ton** U-type dies



EP-410



Bypass cartridge

**FEATURES**

The EP-410, hand operated compression tool features a two stage rapid advance pumping system. It accepts all U type dies currently manufactured for 12 ton tools on the market.

Consult your connector manufacturer for exact cable, connector and die combinations.

When ordering dies, specify the manufacturer's die and connector numbers.

This tool was designed to accommodate U-type dies for applying compression fittings to copper, aluminum and ACSR conductor.

**SPECIFICATIONS**

Ram Stroke : 25 mm  
Reservoir Capacity : 124 cc

Force at die face :  
106 kN

**SIZE**

585 (L) x 150 (W) mm

**WEIGHT**

6.0 kg

**ACCESSORIES**

Double molded carrying case

**REMARKS**

Dies are sold separately. Specify the manufacturer's die and connector numbers.

- \* Two stage pumping action for rapid ram advance to the connector hold position with minimum pumping action
- \* Replaceable Dropout bypass valve cartridge for easy repair
- \* Fiberglass handles
- \* 180 degree swivel head
- \* Twist handle pressure release
- \* Accepts all dies used for Alcoa, Burndy, T&B, Klauke, Cembre and Blackburn 12 ton compressors
- \* Comes complete with double molded carrying case

MODEL No.

**EP-H130**

Accepts existing **12 ton** U-type dies,  
dies for deep indent crimps

**SPECIFICATIONS**

Ram stroke : 28 mm  
Oil volume required : 51 cc  
Force at die face :  
120 kN

**SIZE**

317 (L) mm

**WEIGHT**

4.2 kg

**ACCESSORIES**

Steel carrying case with die tray



EP-H130H



Example of dies

**FEATURES**

The EP-H130H is a H-head with a one inch jaw opening. It accepts all shell type dies and dies for deep indent crimps currently used in 12 ton tool on today's market.

A 68.5Mpa (10,000 PSI) external pump is required to operate this tool.

Consult your connector manufacturer for exact cable, connector and die combinations.

**REMARKS**

Dies are sold separately.  
Specify the manufacturer's die and connector numbers.

\* 25mm jaw opening

\* Accepts all dies used for Alcoa, Burndy, T&B, Klauke, Cembre and Blackburn 12 ton compressors, as well as dies for deep indent crimps.

MODEL No.  
**EP-431**

Accepts existing **12 ton** U-type dies



EP-431



EP-431 shown with carrying case

### FEATURES

The EP-431 is unique in that it has a large jaw opening of 31mm, and is able to splice 31mm outer diameter conductors.

This tool was designed for the electrical contractor and electric utility lineman who is confronted with larger cable diameter and larger connectors.

Most of the internal hydraulic components are the same as the EP-410 and the EP-510C.

This tool was designed to accommodate U-type dies for applying compression fittings to copper, aluminum and ACSR conductor.

### SPECIFICATIONS

Ram stroke : 31 mm  
Reservoir capacity : 145 cc

Force at die face :  
106 kN

### SIZE

610 (L) x 150 (W) mm

### WEIGHT

6.4 kg

### ACCESSORIES

Double molded carrying case

### REMARKS

Dies are sold separately. Specify the manufacturer's die and connector numbers.

- \* Two stage pumping action for rapid ram advance to the connector hold position with minimum pumping action
- \* Replaceable Dropout bypass valve cartridge for easy repair
- \* Fiberglass handles
- \* 180 degree swivel head
- \* Twist handle pressure release
- \* Accepts all dies used for Alcoa, Burndy, T&B, Klauke, Cembre and Blackburn 12 ton compressors
- \* Comes complete with double molded carrying case

MODEL No.

**EP-510C**Accepts existing **12 ton** U-type dies**SPECIFICATIONS**

Ram stroke : 42 mm  
Reservoir capacity : 200 cc

Force at die face : 118 kN

**SIZE**

644 (L) x 150 (W) mm

**WEIGHT**

8.0 kg

**ACCESSORIES**

Double molded carrying case



EP-510C



EP-510C shown with PG-610 test gauge

**FEATURES**

The EP-510C, hand operated compression tool features a two stage rapid advance pumping system. It accepts all U-type dies currently manufactured for 12 ton tools on the market.

The jaw opening of 42mm can accept larger splice up to 750KCM. Mid-span sleeve connection can be installed on larger cables and the cable can then be removed through the jaw opening.

Consult your connector manufacturer for exact cable, connector and die combinations.

Specify the manufacturer's die and connector numbers.

This tool was designed to accommodate U-type dies for applying compression fittings to copper, aluminum and ACSR conductor.

**REMARKS**

Dies are sold separately. Specify the manufacturer's die and connector numbers.

\* Two stage pumping action for rapid ram advance to the connector hold position with minimum pumping action

\* Replaceable Dropout bypass valve cartridge for easy repair  
\* Fiberglass handles

\* 180 degree swivel head

\* Twist handle pressure release

\* Accepts all dies used for Alcoa, Burndy, T&B and Blackburn 12 ton compressors

\* Comes complete with double molded plastic case



MODEL No.

**UC-6B**

Up to 500KCM Anderson type connector



UC-6B



Connector in the tool

**FEATURES**

The UC-6B dieless crimping tool was designed to install Anderson type connectors up to 500 KCM.

Three movable indenting nibs push connectors against the top fixed nib. As a result, four indentations are made into the connector.

**SPECIFICATIONS**

Ram stroke : 29mm  
Opening between nibs : 32 mm  
Output force : 60 kN

**SIZE**

563 (L) mm

**WEIGHT**

5.0 kg

**ACCESSORIES**

Steel carrying case

**REMARKS**

- \* Replaceable bypass cartridge
- \* External pressure adjustment
- \* Swivel head
- \* Fiberglass handles

**NOTE :**

The UC-6B was designed to crimp Anderson type connectors. Consult your connector manufacturer for dieless applications.

MODEL No.

**UC-6FT2**

Up to 750KCM Anderson type connector

**SPECIFICATIONS**

Ram stroke : 31.5 mm

Opening between nibs : 36 mm

Output force : 60 kN

**SIZE**

580 (L) mm

**WEIGHT**

5,6 kg

**ACCESSORIES**

Steel carrying case



UC-6FT2



UC-6FT2 (Flip-top head opened)

**FEATURES**

The UC-6FT2 flip-top dieless crimping tool was designed to install Anderson type connectors up to 750 KCM.

Three movable indenting nibs push connectors against the top fixed nib. As a result, four indentations are made into the connector.

Larger cables can be inserted and removed by opening the flip-top head.

**REMARKS**

- \* Replaceable Bypass cartridge
- \* External pressure adjustment
- \* Flip Top Head
- \* Fiberglass handles

**NOTE :**

The UC-6FT2 was designed to crimp Anderson type connectors. Consult your connector manufacturer for dieless applications.

MODEL No.  
**EP-50H**

Accepts BEKU type dies  
Up to 150 mm<sup>2</sup> Cu lug



EP-50H



Example of dies



EP-50H shown with carrying case

**SPECIFICATIONS**

Ram stroke : 15 mm  
Oil volume required : 18 cc  
Force at die face : 52 kN

**SIZE**

250 (L) mm

**WEIGHT**

1.6 kg

**ACCESSORIES**

Steel carrying case with die tray

**FEATURES**

The EP-50H was designed to accept dies for BEKU type mechanical tool widely used in European countries.

The light weight and slim design is ideal for close quarter application such as connection in the switch box.  
(Only 1.6 kg)

Positive latch type closed head provides easy insertion and removal of connectors.

This tool requires an external 68.5Mpa hydraulic pump.

**REMARKS**

Dies are sold separately

- \* Light weight, compact and slim design
- \* Accepts BEKU type dies
- \* Yoke and Latch type head for easy die changeover and easy removal of jointed conductor
- \* Adjustable ram stroke. 10 - 15 mm
- \* Single acting 68.5Mpa hydraulic power source required

MODEL No.

**EP-410H**Accepts existing **12 ton** U-type dies**SPECIFICATIONS**

Ram stroke : 25 mm  
 Oil volume required : 42 cc  
 Force at die face :  
 114 kN

**SIZE**

285 (L) mm

**WEIGHT**

3,6 kg

**ACCESSORIES**

Steel carrying case with die tray



EP-410H

**FEATURES**

The EP-410H is a traditional C-head with a one inch jaw opening. It accepts all U-type dies currently used in 12 ton tool on today's market.

A 68.5Mpa or 10,000 PSI external pump is required to operate this tool.

Consult your connector manufacturer for exact cable, connector and die combinations.

This tool was designed to accommodate shell type dies for applying compression fittings to copper, aluminum, and ACSR conductor.

**REMARKS**

Dies are sold separately  
 Specify the manufacturer's die and connector numbers.

\* 25mm jaw opening

\* Accepts all dies used for Alcoa, Burndy, T&B, Klauke, Cembre, and Blackburn 12 ton compressors



Example of dies



EP-410H shown with carrying case

MODEL No.

# EP-H130H

Accepts existing **12 ton** U-type dies, dies for deep indent crimps



EP-H130H

## SPECIFICATIONS

Ram stroke : 28 mm  
 Oil volume required : 51 cc  
 Force at die face :  
 120 kN

## SIZE

317 (L) mm

## WEIGHT

4.2 kg

## ACCESSORIES

Steel carrying case with die tray



Die holder & U-type dies

## FEATURES

The EP-H130H is a H-head with a one inch jaw opening. It accepts all shell type dies and dies for deep indent crimps currently used in 12 ton tool on today's market.

A 68.5Mpa (10,000 PSI) external pump is required to operate this tool.

Consult your connector manufacturer for exact cable, connector and die combinations.

## REMARKS

Dies are sold separately. Specify the manufacturer's die and connector numbers.

\* 25mm jaw opening

\* Accepts all dies used for Alcoa, Burndy, T&B, Klauke, Cembre and Blackburn 12 ton compressors, as well as dies for deep indent crimps.



EP-H130H shown with carrying case

MODEL No.

**EP-431H**Accepts existing **12 ton** U-type dies**SPECIFICATIONS**

Ram stroke : 31 mm  
 Oil volume required : 50 cc  
 Force at die face :  
 106 kN

**SIZE**

340 (L) mm

**WEIGHT**

4.6 kg

**ACCESSORIES**

Steel carrying case with die tray



EP-431H



EP-431H shown with carrying case

**FEATURES**

The EP-431H is a remote C-head that requires an external 68.5Mpa or 10,000 PSI pumping source for operation. This unit has a larger jaw opening than the EP-410H and EP-H130H.

The 31mm opening allows the user to compress larger splices up to 600KCM.

Consult your connector manufacturer for exact cable, connector and die combinations.

This tool was designed to accommodate U-type dies for applying compression fittings to copper, aluminum, and ACSR conductor.

**REMARKS**

Dies are sold separately. Specify the manufacturer's die and connector number.

\* 31mm jaw opening

\* Accepts all dies used for Alcoa, Burndy, T&B, Klauke, Cembre, and Blackburn 12 ton compressors

MODEL No.  
**EP-510HC**

Accepts existing **12 ton** U-type dies



EP-510HC



EP-510HC shown with carrying case

**SPECIFICATIONS**

Ram stroke : 42 mm  
Oil volume required : 77 cc  
Force at die face: 118 kN

**SIZE**

420 (L) mm

**WEIGHT**

5.7 kg

**ACCESSORIES**

Steel carrying case with die tray

**FEATURES**

The EP-510HC is a remote C-head that requires an external 68.5Mpa or 10,000 PSI pumping source. It accepts all U type dies used with conventional 12 ton compression tools.

The larger jaw opening of 42mm accepts conductors and mid-span sleeve connections up to 750KCM.

Consult your connector manufacturer for exact cable, connector and die combinations.

This tool was designed to accommodate U-type dies for applying compression fittings to copper, aluminum, and ACSR conductor.

**REMARKS**

Dies are sold separately. Specify the manufacturer's die and connector numbers.

\* 42mm jaw opening

\* Accepts all dies used for Alcoa, Burndy, T&B, Klauke, Cembre, and Blackburn 12 ton compressors

MODEL No.

**EP-610HS2**

Accepts BURNDY P dies  
as well as **12 ton** U-type dies



EP-610HS2 shown with die adapter



Example of dies



EP-610HS2 shown with carrying case

**SPECIFICATIONS**

Ram stroke : 50 mm  
(45 mm with die adapter)  
Oil volume required : 100 cc  
Force at die face :  
139 kN

**SIZE**

375 (L) mm

**WEIGHT**

6.9 kg

**ACCESSORIES**

Steel carrying case with die tray

**FEATURES**

The EP-610HS2 is a remote C-head that requires an external 68.5Mpa or 10,000 PSI pumping source.

It accepts Burndy P-type dies used in the Y46. When used with PU-Adapter, it will accept all U-type dies used with any 12 ton tool.

Consult your connector manufacturer for exact cable, connector and die combinations.

**REMARKS**

Dies are sold separately. Specify the manufacturer's die and connector numbers.

\* 50mm jaw opening

\*Accepts Burndy P type dies

\*Accepts all dies used for Alcoa, Burndy, T&B, Klauke, Cembre, and Blackburn 12 ton compressors when used with P-U Adapter



MODEL No.  
**LP-430B**

Accepts existing **12 ton** U-type dies



LP-430B

**SPECIFICATIONS**

Jaw Opening : 30mm

Force at die face :  
110 kN

**SIZE**

127 (Dia) x 557 (L) mm

**WEIGHT**

8.4 kg



Example of dies

**FEATURES**

The LP-430B hydraulic tool is directly powered by PTO (Power Take Off) from utility bucket trucks or any vehicle with a low pressure hydraulic circuit having Line pressure of 13.7Mpa or 2,000 PSI and a maximum flow of 35 liters/min. or 9 GPM.

The LP-430B is designed to operate with either Open-Center or Closed Center hydraulic system by rotating the head to the position.

The LP-430B has the same compression head as the EP-431 so that dies are interchangeable with all 12 ton U-type dies.

It has built-in relief valve to prevent overloading the tool from more than 13.7Mpa or 2,000 PSI of input pressure.

LP-430B is fitted with a two step safety trigger to assist in eliminating accidental operation.

Trigger guard is rubber coated to protect user against sharp edges.

**REMARKS**

- \* Low pressure hydraulic compression tool
- \* Direct power input from truck PTO
- \* Relief setting at 13.7Mpa (2,000 PSI)
- \* Suitable for bucket truck use
- \* Specify the manufacturer's die and connector numbers

MODEL No.

**EP-520C**Up to 500 mm<sup>2</sup> Copper Conductor,  
590mm<sup>2</sup> Aluminum Conductor

EP-520C

**SPECIFICATIONS**Ram stroke : 26mm between dies  
Oil volume required : 132 cc

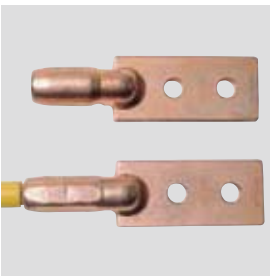
Output Force : 294 kN

**SIZE**

125 (Dia) x 380 (H) mm

**WEIGHT**

17.5 kg

**ACCESSORIES**Steel Carrying case  
Die case

Compressed sample

**FEATURES**

The EP-520C is a single acting, 294kN press that is designed to compress Aluminum sleeves and lugs up to 590mm<sup>2</sup>.

The EP-520C remote head requires an external 68.5Mpa or 10,000 PSI pumping source.

Simple and rigid frame type construction makes the press lighter yet durable.

**REMARKS**

Dies are sold separately.

\* Specify the manufacturer's die and connector numbers.

\* Simple and compact design

\* Yoke type head

\* 30 metric ton output

\* Positive die locking mechanism

MODEL No.  
**EP-60S**

Accepts existing **60 ton** U-type dies  
Max. connector diameter : Approx. 60mm



EP-60S



EP-60S shown with HPE-4M



**SPECIFICATIONS**

Ram stroke : 38.5 mm  
Oil volume required : 303 cc

Force at die face : 540 kN (60 short ton) at 68.5Mpa (10,000 PSI) of oil pressure

**SIZE**

146 (Dia) x 450 (H) mm with Ground stand

**WEIGHT**

22.0 kg

**ACCESSORIES**

Steel carrying case, Ground stand

Option :  
Die adapter for 12 ton U-type dies

**FEATURES**

The EP-60S compression head was designed as a portable tool for installing compression sleeves and terminals for transmission construction and maintenance work.

It operates in any position and gives 540 kN of working force to accept commercial compression joints used for transmission construction.

**REMARKS**

Dies are sold separately.

- \* Accepts all dies used for Alcoa, 60 ton compressors
- \* Specify the manufacturer's die and connector numbers
- \* Portable and light weight
- \* Detachable ground stand as a standard accessory
- \* Large handle for easy carrying
- \* Single acting hydraulic pump required.

MODEL No.

**EP-60D**

Accepts existing **60 ton** U-type dies  
 Max. connector diameter : Approx. 60mm

**SPECIFICATIONS**

Ram stroke : 38.5 mm  
 Oil volume required : 303 cc

Force at die face : 517kN at  
 68.5Mpa (10,000 PSI) of oil pressure

**SIZE**

260 (Dia) x 446 (H) mm with  
 Ground stand

**WEIGHT**

23.0 kg

**ACCESSORIES**

Steel carrying case, Ground stand

Option :  
 Die adapter for 12 ton U-type dies

**REMARKS**

Dies are sold separately.

- \* Specify the manufacturer's die and connector numbers
- \* Accepts all dies used for Alcoa, 60 ton compressors
- \* Portable and light weight
- \* Detachable ground stand as a standard accessory
- \* Large handle for easy carrying
- \* Double acting hydraulic pump required.
- The HPE-4 or HPE-4M is recommended to operate the EP-60D
- \* No connector jamming
- \* Porting : 1/4" NPSM Parker type male & female couplers
- \* 3/8 BI type coupling available on order



EP-60D

**FEATURES**

The EP-60D is a double acting 60 ton press. The benefits of double acting tools are fast ram retraction and elimination of the possibility of the tool jamming.

Double acting means hydraulically advancing and retracting the ram. When retracting the ram, a 4 way valve reroutes the hydraulic path to the retracting chamber.

It ensures the ram retracts hydraulically. As a result, the possibility of connector jamming is eliminated and at the same time the ram is retracted much faster. Ram retracting time is 1/3 of spring return EP-60S.



EP-60D shown with HPE-4

MODEL No.

**EP-100W**

Max connector outer diameter : Approx. 75 mm  
**100 ton** class compression head



EP-100W



EP-100W shown with HPE-4

**FEATURES**

The EP-100W is a 100 ton class compression head for full tension, transmission and substation connections and require an external double acting 68.5Mpa pumping source.

Double acting means hydraulically advancing the ram to build proper tonnage, then the hydraulic pressure is reversed to retract the ram. It expedites ram retracting time.

Removable die cap design helps operator with easy insertion and removal of the connector.

Dies are exclusive to this model not interchangeable with other make.

**SPECIFICATIONS**

Ram stroke : 22 mm  
 Oil volume required : 230 cc

Output force : 980 kN

**SIZE**

200 (Dia) x 359 (H) mm

**WEIGHT**

32.0 kg

**REMARKS**

Dies are sold separately.

- \* Specify the manufacturer's die and connector numbers.
- \* Light weight
- \* Removable die cap for easy connector positioning
- \* Simple design for easy maintenance
- \* Double acting hydraulic pump required
- \* The HPE-4 or HEP-4M Engine driven hydraulic pump is recommended to operate the EP-100W

MODEL No.

**EP-200W**

Max connector outer diameter : Approx. 100 mm  
**200 ton** class compression head

**SPECIFICATIONS**

Ram stroke : 40 mm  
 Oil volume required : 1,134 cc  
 Output force : 1,960 kN

**SIZE**

270 (Dia) x 415 (H) mm

**WEIGHT**

86.0 kg

EP-200W



EP-200W shown with HPE-4

**FEATURES**

The EP-200W is a 200 ton class compression head which accepts shell type dies exclusively designed for the EP-200W. It requires an external double acting 68.5Mpa pumping source.

Double acting means hydraulically advancing the ram to build proper tonnage, then the hydraulic pressure is reversed to retract the ram. It expedites ram retracting time as well as connector binding between dies.

Removable die cap design helps operator an easy insertion and removable of the connector.

**REMARKS**

Dies are sold separately.

- \* Specify the manufacturer's die and connector numbers.
- \* Light weight
- \* Removable die cap for easy connector positioning
- \* Simple design for easy maintenance
- \* Double acting hydraulic pump required
- \* The HPE-4 or HPE-4M Engine driven hydraulic pump is recommended to operate the EP-200W

# S-200

Cuts steel materials as well as cables up to 20 mm



S-200



S-200 (Latch opened)

## FEATURES

Light weight portable hydraulic cutter features :

- \* Guillotine type cutting for less jamming than shear type cutting
- \* No set-up time required
- \* Blades are easily replaceable
- \* 180 degree swivel and latch type head allows easy cutting position

## SPECIFICATIONS

Maximum handle load : 235 N  
 Single stage pumping  
 Relief valve is not equipped  
 Reservoir capacity : 60 cc  
 Maximum opening : 22 mm  
 Pumping cycles when no load : 39 times

Output force : 66 kN

## SIZE

400 (L) mm

## WEIGHT

3.0 kg

## ACCESSORIES

Carrying bag

## REMARKS

Cutting of piano wire is prohibited.

Cutting capacity

Wire rope 6 x 7	: 16 mm
Wire rope 6 x 12	: 20 mm
Wire rope 6 x 19	: 20 mm
Soft steel bar	: 16 mm
Reinforcing rod	: 13 mm
Cu strands	: 20 mm
Al strands	: 20 mm
ACSR	: 21 mm
Guy wire 1 x 7	: 16 mm
Guy wire 1 x 19	: 16 mm
CCP cable	: N/A

MODEL No.

**S-240**

Cuts steel materials as well as cables up to 24 mm



S-240

**SPECIFICATIONS**

Maximum handle load : 226 N  
 Two stage pumping  
 Relief valve is not equipped  
 Reservoir capacity : 120 cc  
 Maximum opening : 24 mm  
 Pumping cycles when no load :  
 13 times

Output force : 84 kN

**SIZE**

475 (L) mm

**WEIGHT**

4.9 kg

**ACCESSORIES**

Carrying bag



S-240 (Latch opened)

**FEATURES**

Light weight portable hydraulic cutter features :

- \* Two stage pumping for rapid blade advance
- \* Guillotine type cutting for less jamming than shear type cutting
- \* No set-up time required
- \* Blades are easily replaceable
- \* 180 degree swivel and latch type head allows easy cutting position

**REMARKS**

Cutting of piano wire is prohibited.

Cutting capacity

Wire rope 6 x7	: 18 mm
Wire rope 6 x12	: 24 mm
Wire rope 6 x 19	: 24 mm
Soft steel bar	: 20 mm
Reinforcing rod	: 16 mm
Cu strands	: 24 mm
Al strands	: 24 mm
ACSR	: 24 mm
Guy wire 1 x7	: 20 mm
Guy wire 1 x 19	: 20 mm
CCP cable	: N/A



MODEL No.  
**S-320**

Cuts heavy steel materials up to 32 mm



S-320



S-320 shown with Reinforcing rod

**SPECIFICATIONS**

Maximum handle load : 276 N  
 Two stage pumping  
 Relief valve is equipped  
 Reservoir capacity : 202 cc  
 Maximum opening : 35 mm  
 Pumping cycles when no load : 20 times

Output force : 194 kN

**SIZE**

580 (L) mm

**WEIGHT**

12.0 kg

**ACCESSORIES**

Carrying bag

**FEATURES**

Light weight portable hydraulic cutter features :

- \* Two stage pumping for rapid blade advance
- \* Safety relief valve for overload protection
- \* Guillotine type cutting for less jamming than shear type cutting
- \* No set-up time required
- \* Blades are easily replaceable
- \* 180 degree swivel and latch type head allows easy cutting position

**REMARKS**

Cutting of piano wire is prohibited.

Cutting capacity

Wire rope 6 x7	: 32 mm
Wire rope 6 x12	: 32 mm
Wire rope 6 x 19	: 32 mm
Soft steel bar	: 25 mm
Reinforcing rod	: 25 mm
Cu strands	: 32 mm
Al strands	: 32 mm
ACSR	: 32 mm
Guy wire 1 x7	: 32 mm
Guy wire 1 x 19	: 32 mm
CCP cable	: N/A

MODEL No.

**S-400**

Cuts steel materials as well as cables up to 41 mm



S-400

**SPECIFICATIONS**

Maximum handle load : 196 N  
 Two stage pumping  
 Relief valve is not equipped  
 Reservoir capacity : 120 cc  
 Maximum opening : 42 mm  
 Pumping cycles when no load :  
 17 times

Output force : 55 kN

**SIZE**

575 (L) mm

**WEIGHT**

5.8 kg

**ACCESSORIES**

Carrying bag



S-400 (Head opened)

**FEATURES**

Light weight portable hydraulic cutter features :

- \* Two stage pumping for rapid blade advance
- \* Guillotine type cutting for less jamming than shear type cutting
- \* No set-up time required
- \* Blades are easily replaceable
- \* 180 degree swivel and lock pin type head allows easy cutting position

**REMARKS**

Cutting of piano wire is prohibited.

Cutting capacity

Wire rope 6 x7	: 22 mm
Wire rope 6 x12	: 25 mm
Wire rope 6 x 19	: 25 mm
Soft steel bar	: 20 mm
Reinforcing rod	: 16 mm
Cu strands	: 41 mm
Al strands	: 41 mm
ACSR	: 38 mm
Guy wire 1 x7	: 15 mm
Guy wire 1 x 19	: 20 mm
CCP cable	: N/A

MODEL No.  
**S-550**

Cuts steel materials as well as cables up to 54 mm



S-550



S-550 (Head opened)

**SPECIFICATIONS**

Maximum handle load : 276 N  
 Two stage pumping  
 Relief valve is equipped  
 Reservoir capacity : 202 cc  
 Maximum opening : 54 mm  
 Pumping cycles when no load : 25 times

Output force : 124 kN

**SIZE**

625 (L) mm

**WEIGHT**

10.0 kg

**ACCESSORIES**

Carrying bag

**FEATURES**

Light weight portable hydraulic cutter features :

- \* Two stage pumping for rapid blade advance
- \* Safety relief valve for overload protection
- \* Guillotine type cutting for less jamming than shear type cutting
- \* No set-up time required
- \* Blades are easily replaceable
- \* 180 degree swivel and lock pin type head allows easy cutting position

**REMARKS**

Cutting of piano wire is prohibited.

Cutting capacity

Wire rope 6 x7	: 25 mm
Wire rope 6 x12	: 30 mm
Wire rope 6 x 19	: 30 mm
Soft steel bar	: 22 mm
Reinforcing rod	: 20 mm
Cu strands	: 54 mm
Al strands	: 54 mm
ACSR	: 54 mm
Guy wire 1 x7	: 15 mm
Guy wire 1 x 19	: 20 mm
CCP cable	: N/A

MODEL No.

**850**

Cuts cables up to 85 mm

**SPECIFICATIONS**

Maximum handle load : 196 N  
 Two stage pumping  
 Relief valve is not equipped  
 Reservoir capacity : 120 cc  
 Maximum opening : 88 mm  
 Pumping cycles when no load : 20 times

Output force : 39 kN

**SIZE**

710 (L) mm

**WEIGHT**

8,2 kg

**ACCESSORIES**

Carrying bag

850



850 (Head opened)

**FEATURES**

Light weight portable hydraulic cutter features :

- \* Two stage pumping for rapid blade advance
- \* Guillotine type cutting for less jamming than shear type cutting
- \* No set-up time required
- \* Blades are easily replaceable
- \* 180 degree swivel and lock pin type head allows easy cutting position

**REMARKS**

Cutting of piano wire is prohibited.

Cutting capacity

Cu strands	: 28 mm
Al strands	: 38 mm
CCP cable	: 85 mm

Wire rope 6 x 7	: N/A
Wire rope 6 x 12	: N/A
Wire rope 6 x 19	: N/A
Soft steel bar	: N/A
Reinforcing rod	: N/A
ACSR	: N/A
Guy wire 1 x 7	: N/A
Guy wire 1 x 19	: N/A

MODEL No.  
**SP-20A**

Cuts steel materials as well as cables  
up to 20 mm



SP-20A



**FEATURES**

The SP-20A hydraulic cutter head features :

- \* Fast cutting with remote operation
- \* It can be operated by any hydraulic pump with rated oil pressure of 68.5 Mpa (10,000 PSI)
- \* Equipped with PT 3/8" threaded Izumi high pressure couplers
- \* PT-NPT adapters are available on request for NPT 3/8" threaded couplers
- \* Blades are easily replaceable
- \* Flip-top latch for easy insertion of cutting material

**SPECIFICATIONS**

Maximum input pressure : 68.5 Mpa  
Oil volume required : 18 cc

Output force : 44 kN

**SIZE**

240 (L) mm

**WEIGHT**

2.3 kg

**ACCESSORIES**

Carrying bag

**REMARKS**

Cutting of piano wire is prohibited.

Cutting capacity

Wire rope 6 x 7	: 16 mm
Wire rope 6 x 12	: 20 mm
Wire rope 6 x 19	: 20 mm
Soft steel bar	: 16 mm
Reinforcing rod	: 13 mm
Cu strands	: 20 mm
Al strands	: 20 mm
ACSR	: 21 mm
Guy wire 1 x 7	: 15 mm
Guy wire 1 x 19	: 16 mm
CCP cable	: N/A

MODEL No.  
**SP-24**

Cuts steel materials as well as cables  
up to 24 mm

**SPECIFICATIONS**

Maximum input pressure : 68.5 Mpa  
Oil volume required : 33 cc

Output force : 86 kN

**SIZE**

245 (L) mm

**WEIGHT**

3.1 kg

**ACCESSORIES**

Carrying bag



SP-24

**FEATURES**

The SP-24 hydraulic cutter head features :

- \* Fast cutting with remote operation
- \* It can be operated by any hydraulic pump with rated oil pressure of 68.5 Mpa (10,000 PSI)
- \* Equipped with PT 3/8" threaded Izumi high pressure couplers
- \* PT-NPT adapters are available on request for NPT 3/8" threaded couplers
- \* Blades are easily replaceable
- \* Flip-top latch for easy insertion of cutting material

**REMARKS**

Cutting of piano wire is prohibited.

Cutting capacity

Wire rope 6 x 7	: 18 mm
Wire rope 6 x 12	: 24 mm
Wire rope 6 x 19	: 24 mm
Soft steel bar	: 20 mm
Reinforcing rod	: 16 mm
Cu strands	: 24 mm
Al strands	: 24 mm
ACSR	: 24 mm
Guy wire 1 x 7	: 20 mm
Guy wire 1 x 19	: 20 mm
CCP cable	: N/A



MODEL No.  
**SP-32**

Cuts heavy duty steel materials  
up to 32 mm



SP-32



**FEATURES**

The SP-32 hydraulic cutter head features :

- \* Fast cutting with remote operation
- \* It can be operated by any hydraulic pump with rated oil pressure of 68.5 Mpa (10,000 PSI)
- \* Equipped with PT 3/8" threaded izumi high pressure couplers
- \* PT-NPT adapters are available on request for NPT 3/8" threaded couplers
- \* Blades are easily replaceable
- \* Flip-top latch for easy insertion of cutting material

**SPECIFICATIONS**

Maximum input pressure : 68.5 Mpa  
Oil volume required : 135 cc

Output force : 250 kN

**SIZE**

300 (L) mm

**WEIGHT**

10.0 kg

**ACCESSORIES**

Carrying bag

**REMARKS**

Cutting of piano wire is prohibited.

Cutting capacity

Wire rope 6 x 7	: 32 mm
Wire rope 6 x 12	: 32 mm
Wire rope 6 x 19	: 32 mm
Soft steel bar	: 25 mm
Reinforcing rod	: 25 mm
Cu strands	: 32 mm
Al strands	: 32 mm
ACSR	: 32 mm
Guy wire 1 x 7	: 32 mm
Guy wire 1 x 19	: 32 mm
CCP cable	: N/A

MODEL No.

**SP-40A**

Cuts steel materials as well as cables  
up to 41 mm

**SPECIFICATIONS**

Maximum input pressure : 68.5 Mpa  
Oil volume required : 50 cc

Output force : 68 kN

**SIZE**

340 (L) mm

**WEIGHT**

4.0 kg

**ACCESSORIES**

Carrying bag



SP-40A

**FEATURES**

The SP-40A hydraulic cutter head features :

- \* Fast cutting with remote operation
- \* It can be operated by any hydraulic pump with rated oil pressure of 68.5 Mpa (10,000 PSI)
- \* Equipped with PT 3/8" threaded izumi high pressure couplers
- \* PT-NPT adapters are available on request for NPT 3/8" threaded couplers
- \* Blades are easily replaceable
- \* Lock pin type cutter head

**REMARKS**

Cutting of piano wire is prohibited.

Cutting capacity

Wire rope 6 x 7	: 22 mm
Wire rope 6 x 12	: 25 mm
Wire rope 6 x 19	: 25 mm
Soft steel bar	: 20 mm
Reinforcing rod	: 16 mm
Cu strands	: 41 mm
Al strands	: 41 mm
ACSR	: 38 mm
Guy wire 1 x 7	: 15 mm
Guy wire 1 x 19	: 20 mm
CCP cable	: N/A



MODEL No.  
**SP-55A**

Cuts steel materials as well as cables  
up to 55 mm



SP-55A



### FEATURES

The SP-55A hydraulic cutter head features :

- \* Fast cutting with remote operation
- \* It can be operated by any hydraulic pump with rated oil pressure of 68.5 Mpa (10,000 PSI)
- \* Equipped with PT 3/8" threaded Izumi high pressure couplers
- \* PT-NPT adapters are available on request for NPT 3/8" threaded couplers
- \* Blades are easily replaceable
- \* Lock pin type cutter head

### SPECIFICATIONS

Maximum input pressure : 68.5 Mpa  
Oil volume required : 120 cc

Output force : 118 kN

### SIZE

415 (L) mm

### WEIGHT

9.0 kg

### ACCESSORIES

Carrying bag

### REMARKS

Cutting of piano wire is prohibited.

Cutting capacity

Wire rope 6 x 7	: 25 mm
Wire rope 6 x 12	: 30 mm
Wire rope 6 x 19	: 30 mm
Soft steel bar	: 22 mm
Reinforcing rod	: 19 mm
Cu strands	: 50 mm
Al strands	: 50 mm
ACSR	: 50 mm
Guy wire 1 x 7	: 15 mm
Guy wire 1 x 19	: 20 mm
CCP cable	: N/A

MODEL No.  
**P-60**

Cuts Al & Cu cables up to 60 mm



### SPECIFICATIONS

Maximum input pressure : 68.5Mpa

Oil volume required : 71 cc

Maximum opening : 60 mm

Output force : 79 kN

### SIZE

410 (L) mm

### WEIGHT

5.2 kg

### ACCESSORIES

Carrying bag

P-60



### FEATURES

The P-60 portable hydraulic cutter head features :

- \* Fast cutting with remote operation
- \* Guillotine type cutting for less jamming than shear type cutting
- \* It can be operated by any hydraulic pump with rated oil pressure of 68.5 Mpa (10,000 PSI)
- \* Equipped with NPT 3/8" threaded Parker type high pressure coupler
- \* Blades are easily replaceable
- \* Lock pin type cutter head

### REMARKS

Cutting of piano wire is prohibited.

Cutting capacity

Cu strands	: 60 mm
Al strands	: 60 mm
CCP cable	: 60 mm

Wire rope 6 x 7	: N/A
Wire rope 6 x 12	: N/A
Wire rope 6 x 19	: N/A
Soft steel bar	: N/A
Reinforcing rod	: N/A
ACSR	: N/A
Guy wire 1 x 7	: N/A
Guy wire 1 x 19	: N/A

MODEL No.  
**P-85**

Cuts Al & Cu cables up to 85 mm



P-85



**FEATURES**

The P-85 hydraulic cutter head features :

- \* Fast cutting with remote operation
- \* It can be operated by any hydraulic pump with rated oil pressure of 68.5 Mpa (10,000 PSI)
- \* Equipped with PT 3/8" threaded Izumi high pressure couplers
- \* PT-NPT adapters are available on request for NPT 3/8" threaded couplers
- \* Blades are easily replaceable
- \* Lock pin type cutter head

**SPECIFICATIONS**

Maximum input pressure : 68.5Mpa  
Oil volume required : 65 cc

Output force : 40 kN

**SIZE**

460 (L) mm

**WEIGHT**

7.2 kg

**ACCESSORIES**

Carrying bag

**REMARKS**

Cutting of piano wire is prohibited.

Cutting capacity

Cu strands	: 28 mm
Al strands	: 38 mm
CCP cable	: 85 mm
Wire rope 6 x 7	: N/A
Wire rope 6 x 12	: N/A
Wire rope 6 x 19	: N/A
Soft steel bar	: N/A
Reinforcing rod	: N/A
ACSR	: N/A
Guy wire 1 x 7	: N/A
Guy wire 1 x 19	: N/A

MODEL No.

# P-100A

Cuts Al & Cu cables up to 100 mm



P-100A



## FEATURES

The P-100A hydraulic cutter head features :

- \* Fast cutting with remote operation
- \* It can be operated by any hydraulic pump with rated oil pressure of 68.5 Mpa (10,000 PSI)
- \* Equipped with PT 3/8" threaded izumi high pressure couplers
- \* PT-NPT adapters are available on request for NPT 3/8" threaded couplers
- \* Blades are easily replaceable
- \* Lock pin type cutter head

## SPECIFICATIONS

Maximum input pressure : 68.5Mpa  
Oil volume required : 140 cc

Output force : 74 kN

## SIZE

590 (L) mm

## WEIGHT

13.2 kg

## ACCESSORIES

Carrying bag

## REMARKS

Cutting of piano wire is prohibited.

Cutting capacity

Cu strands	: 42 mm
Al strands	: 46 mm
CCP cable	: 100mm
Wire rope 6 x 7	: N/A
Wire rope 6 x 12	: N/A
Wire rope 6 x 19	: N/A
Soft steel bar	: N/A
Reinforcing rod	: N/A
ACSR	: N/A
Guy wire 1 x 7	: N/A
Guy wire 1 x 19	: N/A

MODEL No.

**P-132**

Cuts insulated cables up to 132 mm



P-132



P-132 shown with P-60



**SPECIFICATIONS**

Maximum input pressure : 68.5Mpa (10.000 PSI)

Oil volume required : 220 cc

Output force : 95 kN

**SIZE**

630 (L) mm

**WEIGHT**

12.0 kg

**ACCESSORIES**

Carrying bag

**FEATURES**

P-132 hydraulic cutter head features :

- \* Cuts underground or armored cables (depends on type)
- \* Fast cutting with remote operation
- \* Guillotine type cutting for less jamming than shear type cutting
- \* 132mm jaw opening accepts larger size cables
- \* Can be operated by any hydraulic pump with rated oil pressure of 68.5 Mpa (10,000 PSI)
- \* Equipped with NPT 3/8" threaded Parker type high pressure couplers
- \* Blades are easily replaceable
- \* Lock pin type cutter head

**REMARKS**

Cutting of piano wire is prohibited.

Cutting capacity

Cu strands	: 42 mm
Al strands	: 46 mm

Wire rope 6x7	: N/A
Wire rope 6x12	: N/A
Wire rope 6x19	: N/A
Soft steel bar	: N/A
Reinforcing rod	: N/A
ACSR	: N/A
Guy wire 1x7	: N/A
Guy wire 1x19	: N/A

\*Quality backed by ISO 9001

MODEL No.

**YSP-30B**

Al strands : 28 mm (240 mm<sup>2</sup>)  
 Cu strands : 28 mm (250 mm<sup>2</sup>)  
 ACSR: 19 mm (120 mm<sup>2</sup>) (Single strand steel core)



YSP-30B

**SPECIFICATIONS**

Maximum input pressure :  
68.5 Mpa

Oil volume required : 18 cc

Output force : 63 kN

**SIZE**

320 (L) mm

**WEIGHT**

3.2 kg

**ACCESSORIES**

Carrying bag

**FEATURES**

The YSP-30B hydraulic scissors type cutter head is ideal for close quarter work and bucket truck applications where the open jaw cutter can easily grab and cut the cables.

Scissors type cutting gives clean cut with a minimal amount of cable distortion, which allows for easy connector installation on cables.

The YSP-30B remote head requires an external, high pressure, 68.5Mpa ( 10,000 PSI ) pumping source.

**REMARKS**

- \* Scissors type cutter
- \* Fast remote operation
- \* Light weight and compact
- \* 30mm opening between blades

YSP-30B with 3-60mm<sup>2</sup> cables

MODEL No.  
**P-85YC**

Cuts electric cables up to 85 mm



P-85YC



**FEATURES**

The P-85YC scissors type cutter head was designed to cut various cables used in the industry today.

It can cut Cu and Al cables up to 60mm and CCP cables up to 85mm.

The scissors type cutter head provides exceptional ease of use and maneuverability when making many cuts. It can cut the cables with a minimum amount of distortion.

The P-85YC remote head requires an external, high pressure, 68.5Mpa (10,000 PSI) pumping source.

**SPECIFICATIONS**

Maximum input pressure : 68.5 Mpa

Oil volume required:50 cc

Ram stroke : 43.5 mm

Output force : 73.5 kN

**SIZE**

455 (L) x 200 (H) x 120 (W) mm

**WEIGHT**

4.8 kg

**ACCESSORIES**

Carrying bag

**REMARKS**

Cutting capacity :

Material

- Polyethylene cable
- 600V-CV325 mm<sup>2</sup> (60 mm OD)
- 3 core
- 600V-CV150 mm<sup>2</sup> (46 mm OD)
- 3 core
- 600V-CV500 mm<sup>2</sup> (38 mm OD)

Multi-core vinyl insulation cable  
VVR150 mm<sup>2</sup> (47 mm OD)  
3 core

CCP Cable (85 mm OD)

Lead sheathed cable (85 mm OD)

MODEL No.

**S-32CC1**

Soft steel bar : 19 mm Re-bar : 19 mm  
Al or Cu rod : 25 mm

**SPECIFICATIONS**

Maximum handle force : 284 N  
Reservoir capacity : 165 cc  
No relief valve equipped  
Output force : 191 kN

**SIZE**

685 (L) mm

**WEIGHT**

10.2 kg

**ACCESSORIES**

Carrying bag



S-32CC1

**FEATURES**

The S-32CC1 hydraulic cutter was specially designed to cut the toughest EHS guy wire, ground and anchor rods.

The anvil style, center cut blades eliminate jamming problems common to shear type cutters, and the blades are easily replaced in the field.

The tool is made of high grade steel and has rubber handle grips.

A flip-top latch opens the tool jaw to accept material to cut easily.

**REMARKS**

- \* Heavy duty head design
- \* Easily replaceable blades
- \* Butting type cut for solid materials (Chain, Steel bar, Guy wire, Re-bar)
- \* Flip-top latch for easy insertion of cutting material



MODEL No.

**HP-180N**

Rated pressure : 0 - 59 Mpa



HP-180N



HP-180N shown with SH-10

**SPECIFICATIONS**

Oil delivery : 0.9 cc / stroke

Reservoir capacity : 180 cc

**SIZE**

320 (L) x 80 (W) x 120 (H) mm

**WEIGHT**

3.7 kg

**ACCESSORIES**

1 m hydraulic hose attached

**FEATURES**

The HP-180N is ideal for SH-10 Punch driver or any small remote heads requiring less than 180 cc of oil volume.

Since the HP-180N does not have a relief valve, it cannot be used with any compression heads which require a relief valve to ensure a constant compression every time.

**REMARKS**

Relief valve not equipped.

\* Bladder type oil reservoir allows operation in any position

\* Single stage pumping

MODEL No.

**HP-700A**

Rated pressure : 68.5 Mpa or 10,000 PSI

**SPECIFICATIONS**

Oil delivery :  
 10.5 cc / stroke at low pressure  
 1.5 cc / stroke at high pressure

Reservoir capacity : 720 cc

**SIZE**

590 (L) x 130 (W) x 160 (H) mm

**WEIGHT**

9.6 kg

**ACCESSORIES**

2 m hydraulic hose attached



HP-700A



Bypass cartridge

**FEATURES**

The HP-700A hand pump has a two speed pump piston for rapid advance and an external adjustable pressure setting up to 68.5Mpa.

Our exclusive replaceable, bypass cartridge is standard in the HP-700A.

An internal oil bladder allows the HP-700A to be used in any position. (Even pump head upward)

**REMARKS**

- \* Two stage pumping action for rapid ram advance
- \* Replaceable Dropout bypass valve cartridge for easy repair
- \* Economical yet dependable hand hydraulic pump

MODEL No.

**FP-700A**

Rated pressure : 68.5 Mpa or 10,000 PSI



FP-700A



Bypass cartridge

**FEATURES**

The FP-700A foot pump has a two speed pump piston for rapid advance and an external adjustable pressure setting up to 68.5Mpa.

Our exclusive replaceable, bypass cartridge is standard in the FP-700A

An internal oil bladder allows the FP-700A to be used in any position. (Even pump head upward)

**SPECIFICATIONS**

Oil delivery :  
10.5 cc / stroke at low pressure  
1.5 cc / stroke at high pressure

Reservoir capacity : 720 cc

**SIZE**

690 (L) x 150 (W) x 180 (H) mm

**WEIGHT**

10.8 kg

**REMARKS**

Hydraulic hose sold separately.

\* Two stage pumping action for rapid ram advance

\* Replaceable Dropout bypass valve cartridge for easy repair

\* Economical yet dependable foot operated hydraulic pump

MODEL No.

**R14E-F1**

Rated pressure : 68.5 Mpa or 10,000 PSI



R14E-F1



R14E-F1 shown with EP-510HC

**FEATURES**

The R14E-F1 remote operated pump gives the operator complete control. Push buttons permit the operator to advance and retract at will. The operator is never committed to a full cycle, and can always back off at any time during the advance even under pressure. This feature increases efficiency because cuts and crimps can be adjusted as necessary, simply by stopping the advance or retract mode.

The electric motor shuts off when UP button is released and the pressure reaches to preset valve, of 68.5Mpa. The ram can be retracted while DOWN button is depressed.

A 3 meter remote control cable provides both safety and convenience. The operator can set up an operation and then move away from the work site before engaging the tool.

**SPECIFICATIONS**

Oil delivery (50Hz) :  
2.9 liter / min at low pressure  
0.3 liter / min at high pressure

Input : Single phase 50 / 60 Hz 120 V  
or 220 V 340 W motor

Reservoir capacity : 2 liter

**SIZE**

250 (L) x 160 (W) x 355 (H) mm

**WEIGHT**

16.5 kg (14.5 kg dry)

**ACCESSORIES**

2 m hydraulic hose attached

**REMARKS**

- \* Two stage pumping system for rapid advance
- \* Adjustable output pressure to 68.5 Mpa
- \* 360 degree swivel joint for hose maneuverability
- \* Visual oil level
- \* Durable steel cover
- \* Wired remote control

MODEL No.

**R14E-A1**

Rated pressure : 68.5 Mpa or 10,000 PSI



R14E-A1



R14E-A1 shown with EP-431H

**FEATURES**

The R14E-A1 is a fully remote controlled, single acting, 68.5Mpa, electric pump. The two button hand held remote control allows the operator to advance, hold or retract at any time. When 68.5Mpa is reached, the pump will automatically shut off and hold the pressure until the operator pushes the release button to retract the tool.

There is an auto cycle switch that allows the operator to push the advance button once and the pump automatically advances, runs to 68.5 Mpa, and releases. This feature is convenient where operation is repeated several times.

**SPECIFICATIONS**

Oil delivery (50Hz) :  
1.7 liter / min at low pressure  
0.4 liter / min at high pressure

Input : Single phase 50 / 60 Hz 120 V  
or 220 V 550 W motor

Reservoir capacity : 3 liter

**SIZE**

350 (L) x 330 (W) x 420 (H) mm

**WEIGHT**

32.5kg (29.5 kg dry)

**ACCESSORIES**

Remote control switch

**REMARKS**

Hydraulic hose sold separately.

- \* Fully remote controlled
- \* Visual oil level
- \* 3/4 HP heavy duty motor
- \* Durable steel construction with built-in carrying handle
- \* Auto cycle mode
- \* Low amperage requirement

MODEL No.

## HPE-2A

Rated pressure : 68.5 Mpa or 10,000 PSI



HPE-2A



HPE-2A shown with EP-605



### FEATURES

The HPE-2A **single acting** gasoline engine driven hydraulic pump is the most sophisticated engine pump on today's market. It builds pressure to 68.5Mpa automatically and returns engine RPM to an idle.

Wired remote control allows operator complete control. Oil volume is large enough to operate a 60 ton class single acting compression head.

The FUJI HEAVY'S four cycle engine EH09-2D is used with this Pump. This engine meets emission control in accordance with EPA Phase2 and CARB Tier2.

And this engine improves fuel cost by 15% in comparison with former EY08D engine on the HPE-1A.

### SPECIFICATIONS

Oil delivery :  
2.6 liter / min at low pressure  
0.5 liter / min at high pressure

Engine : Air cooled  
4 cycle gasoline engine  
1.5kw (2.0 ps) / 3,600 rpm, leadfree gasoline  
Reservoir capacity : 2.2 liter

### SIZE

470 (L) x 330 (W) x 443 (H)mm

### WEIGHT

33.5kg (30kg dry)

### ACCESSORIES

Remote control switch,  
Spark plug wrench

### REMARKS

Hydraulic hose sold separately.

- \* Remote control operation
- \* Pole mounting bracket as a standard accessory
- \* Visual oil level
- \* External air vent and oil level
- \* Compact design
- \* Dependable Fuji Heavy's engine
- \* For single acting tools

MODEL No.

# HPE-2D

Rated pressure : 68.5 Mpa or 10,000 PSI



HPE-2D



HPE-2D shown with EP-100W



## SPECIFICATIONS

Oil delivery :  
2.6 liter / min at low pressure  
0.35liter / min at high pressure

Engine : Air cooled  
4 cycle gasoline engine  
1.5kw (2.0 ps) / 3,600 rpm, leadfree  
gasoline  
Reservoir capacity : 2.2 liter

## SIZE

530 (L) x 330 (W) x 443 (H) mm

## WEIGHT

37.5 kg (34.0 kg dry)

## ACCESSORIES

Remote control switch,  
Spark plug wrench

## REMARKS

Hydraulic hose sold separately.

- \* Remote control operation
- \* Visual oil level
- \* External air vent and oil level
- \* Compact design
- \* Solenoid operated 4 way valve  
(For double acting tools)
- \* Dependable Fuji Heavy's engine

## FEATURES

The HPE-2D **double acting** gasoline engine driven hydraulic pump is the most sophisticated pump on today's market. It builds pressure to 68.5Mpa automatically and returns engine RPM to an idle.

Wired remote control allows operator complete control. Oil volume is large enough to operate a 100 ton class double acting compression head for intermittent use.

The FUJI HEAVY'S four cycle engine EH09-2D is used with this Pump. This engine meets emission control in accordance with EPA Phase2 and CARB Tier2.

And this engine improves fuel cost by 15% in comparison with former EY08D engine on the HPE-1D.

MODEL No.

**HPE-4**

Rated pressure : 68.5 Mpa or 10,000 PSI



HPE-4

**SPECIFICATIONS**

Oil delivery :

7.5 liter / min at low pressure

1.2 liter / min at high pressure

Engine : Air cooled

4 cycle gasoline engine

2.2kw (3.0 ps) / 3,600 rpm, leadfree gasoline

Reservoir capacity : 10 liter

**SIZE**

665 (L) x 405 (W) x 445 (H) mm

**WEIGHT**

60.0 kg (50.0 kg dry)

**ACCESSORIES**Remote control switch,  
Spark plug wrench**REMARKS**

Hydraulic hose sold separately.

- \* Wired remote control operation with manual control lever
- \* Auto operation allows fully automatic compression work, advance-68.5Mpa-retraction of ram, by just pressing UP button once on the remote control switch
- \* Compression counter to monitor compression cycles for the remainder of maintenance schedule
- \* Pressure gauge for easy output confirmation
- \* Reliable output by FUJI HEAVY'S engine
- \* For double acting tools

**FEATURES**

The HPE-4 is a **double acting** engine driven hydraulic pump suitable for double acting presses for transmission line use.

This pump is one of the most sophisticated on today's market. It builds pressure to 68.5Mpa automatically, and returns the engine RPM to an idle. The push button will control the fluid flow at the discretion of the operator. There is also a manual mode on the pump that can be used to override the remote control.

Electric circuit boards are completely modulated for easy replacement and repair.

The FUJI HEAVY'S four cycle engine EX-13 is used with this Pump. This engine meets emission control in accordance with EPA Phase2 and CARB Tier2. And this engine reduces level by 2 dBA in comparison with former EY15 engine on the HPE-3.



HPE-4 shown with EP-200W





MODEL No.

# HPE-4M

Rated pressure : 68.5 Mpa or 10,000 PSI  
 Engine Driven Pump for 60,100 & 200 ton presses



HPE-4M



HPE-4M shown with EP-60S



HPE-4M shown with EP-200W

## FEATURES

The HPE-4M is a manual controlled engine driven hydraulic pump suitable for single and double acting presses for transmission line use.

The manual control valve permits the user to advance, hold and retract the ram at will. It works for both single and double acting presses.

Simple design and positive manual control valve is ideal for high voltage construction site where electric magnetic field becomes concern.

### Valve Mode & Operation

UP: the ram advances and pressure goes up to 68.5Mpa. Then the relief valve functions.

NEUTRAL: the ram stops and holds its position

DOWN: the ram retracts to its lowest point. (Single and double acting presses) Then the pump builds up pressure to 13.7Mpa and the relief valve functions.

(Double acting press)

The FUJI HEAVY'S four cycle engine EX-13 is used with this Pump. This engine meets emission control in accordance with EPA Phase2 and CARB Tier2. And this engine reduces level by 2 dBA in comparison with former EY15 engine on the HPE-3M.

## SPECIFICATIONS

Oil delivery :  
 7.5 liter/min at low pressure  
 1.2 liter/min at high pressure

Engine : Air cooled  
 4 cycle gasoline engine  
 2.2kw (3.0 ps) / 3,600 rpm, leadfree gasoline  
 Reservoir capacity : 10 liter

## SIZE

670(L) x 405(W) x 475(H) mm

## WEIGHT

60 kg (50 kg dry)

## ACCESSORIES

Spark plug wrench

## REMARKS

Hydraulic hose sold separately.

- \* For double and single acting tools
- \* Positive manual control valve
- \* Relief valve for advance (68.5Mpa) and retract (13.7Mpa)
- \* Pressure gauge for easy output confirmation
- \* Reliable output by FUJI HEAVY'S engine
- \* Maximum hose length 20 meter
- \* Relief valve setting  
 UP: 68.5Mpa  
 DOWN: 13.7Mpa

MODEL No.

**SH-10(A)P**  
**SH-10(B)P**

Up to 104 mm diameter hole perforation on 3.2 mm thickness mild steel



**SPECIFICATIONS**

Punching capacity  
Stainless Steel :  
1.6 mm plate thickness  
Mild steel :  
3.2 mm plate thickness  
Hole diameter :

up to 104 mm (4 inch) es  
Ram Stroke : 25 mm  
Oil volume required : 35 cc  
Output force : 81 kN at 68.5 Mpa pressure

**SIZE**

63 (Dia) x 125 (H) mm

**WEIGHT**

1.9 kg

**ACCESSORIES**

Milli size punch sets are available on request.  
M15, 16, 25, 30, 35, 40, 45, 50, 55, 57, 67, 70, 80, 82, 87, 95, 100, 108, 110

SH-10 (B) P



SH-10(A)P shown with carrying case

**FEATURES**

Selection Chart :

SH-10 (A) P      SH-10 (B) P

- 1 HP-180N Hand Pump
- 2 Setting threads (3/8" & 3/4")
- 3 Collar (Large, Medium, Small)
- 4 Steel carrying case

A19 (3/4")	B16 (1 1/2")
A25 (1")	B22 (3/4")
A31 (1 1/4")	B28 (1")
A39 (1 1/2")	B36 (1 1/4")
A51 (2")	B42 (1 1/2")
	B54(2")

**REMARKS**

Punching size

Punch	Hole size
A15*	17.6 mm
A19 (3 / 4)	19.8 mm
A25 (1)	26.1 mm
A31 (1 1/ 4)	32.5 mm
A39 (1 1/ 2)	38.7 mm
A51 (2)	51.6 mm
A63 (2 1/ 2)*	64.4 mm
A75 (3)*	77.2 mm
B16 (1/ 2)	21.8 mm
B22 (3 / 4)	27.6 mm
B28 (1)	34.1 mm
B36 (1 1/ 4)	42.7 mm
B42 (1 1/ 2)	48.7 mm
B54 (2)	60.5 mm
B70 (2 1/ 2)*	76.1 mm
B82 (3)*	88.9 mm
B92 (3 1/ 2)*	102.8 mm
B104 (4)*	115.5 mm

(\* ) marks show optional punch set available

MODEL No.  
**SH-5PDG**

Punching capacity : 115.5mm diameter hole on 3.2mm thickness mild steel



**SPECIFICATIONS**

Reservoir capacity : 40 cc  
Output force : 50 kN

**SIZE**

353 (L) mm

**WEIGHT**

2.4 kg

**ACCESSORIES**

Steel carrying case.

SH-5PDG



SH-5PDG shown with standard accessories

**FEATURES**

The SH-5PDG is a portable hand hydraulic punch with swivel head for easy access to tight quarters.

It gives clean perforation through 3.2mm thick mild steel with a 4 inch hole.

**SH-5PDG CONTENTS**

- 1 SH-5PDG Hand hydraulic punch
- 2 Set bolts (3/8", 3/4")
- 3 Collars (Large, Medium, Small, Ex-small)
- 4 Steel carrying case

**SH-5PDG PUNCH SET**

- 1 SH-5PDG (A) SET : with A19-51 punch
- 2 SH-5PDG (B) SET : with B16-51 punch

**REMARKS**

- \* Self-contained hand hydraulic punch
- \* Punching head rotates through 360 degrees for easy access in tight quarters
- \* Slim design
- \* Details information of punch is shown on page of SH-10

**APPLICABLE PUNCH**

- \* A19-A75
- \* B16-B104

MODEL No.

**SH-70B**

Punching capacity : 20.5 mm diameter  
hole on 13 mm thickness mild steel



SH-70B



### Optional punch & die

- For copper & Aluminum  
Cu6, Cu7, Cu8, Cu9, Cu10,  
Cu10.5, Cu11, Cu12, Cu13.5,  
Cu17.5, Cu20.5
- For mild steel  
(every other mm)  
S6-S19

### FEATURES

The portable SH-70B punch was designed to punch holes through 13 mm mild steel, aluminum and copper.

A stripper guide extends on either side of the ram to strip the material after punching. This powerful punch will operate from any 68.5Mpa (10,000 PSI) hydraulic pump.

The SH-70B comes complete with four sets of punch and die sizes for 3/8", 1/2", 5/8" and 3/4" bolts, hand pin, carrying case.

### SPECIFICATIONS

Throat depth : 70 mm  
Oil volume required : 82 cc

Output force : 304 kN at 68.5 Mpa pressure

### SIZE

360 (H) x 210 (W) x 95 (D) mm

### WEIGHT

14.0 kg

### ACCESSORIES

Punch & Die for mild steel :  
10.5, 13.5, 17.5, 20.5mm  
diameter, Hand pin,  
Steel carrying case

### REMARKS

- \* Powerful perforation up to 13 mm thick mild steel with a 20.5 mm maximum hole
- \* Recommended for angle iron, plates, beams and bus bars
- \* Stripper guide extends to grip material before punching so that bending and binding or slippage can be avoided
- \* Stripper guide clamps punch in place to free operator's hands
- \* 70 mm throat depth allows commonly used angle iron
- \* New fixed Support stand.

MODEL No.

## PB-10N

Thin steel conduit (A) : A15 (5/8) - A75 (3)

Thick steel conduit (B) : B16 (1/2) - B82 (3)

Gas pipe (SGP) : SGP15 (1/2) - SGP65 (2 1/2)



PB-10N



Example of bending shoes

### FEATURES

The PB-10N was designed to bend various sizes and various thickness of steel pipes without wrinkles.

An aluminum alloy frame makes this bender lighter so that it can be easily carried to the job site.

Bending shoes are designed to bend JIS standardized conduit pipe and gas pipe listed in left chart. If the pipe outer diameter being bent is equivalent to the one from the chart, the shoe can be used for the application.

### SPECIFICATIONS

Oil volume required : 400 cc

Output force : 108 kN

Ram stroke : 250mm

### SIZE

780 (W) mm

### WEIGHT

15 kg : W/O PIVOT SHOES and BENDER SHOE

### ACCESSORIES

Frame, Cylinder,  
Pivot shoes (2 pieces),  
Angle gauge

### REMARKS

Hydraulic pump & Bending shoes are sold separately.

Bending Shoe

Thin conduit (A)    **Thick conduit (B)**  
Gas pipe (SGP)

Size	Pipe dia	Size	Pipe dia
A15	15.9	<b>B42</b>	<b>47.8</b>
A19	19.1	<b>B54</b>	<b>59.6</b>
A25	25.4	<b>B70</b>	<b>75.2</b>
A31	31.8	<b>B82</b>	<b>87.9</b>
A39	38.1	SGP-15	21.7
A51	50.8	SGP-20	27.2
A63	63.5	SGP-25	34.0
A75	76.2	SGP-32	42.7
<b>B16</b>	<b>21.0</b>	SGP-40	48.6
<b>B22</b>	<b>26.5</b>	SGP-50	60.5
<b>B28</b>	<b>33.3</b>	SGP-65	76.3
<b>B36</b>	<b>41.9</b>		

MODEL No.

**PB-15N**

Thin steel conduit (A) : A15 (5/8) - A75 (3)

Thick steel conduit (B) : B16 (1/2) - B104 (4)

Gas pipe (SGP) : SGP15 (1/2) - SGP100 (4)

**SPECIFICATIONS**

Oil volume required : 595 cc

Output force : 162 kN

Ram stroke : 250mm

**SIZE**

900 (W) mm

**WEIGHT**23 kg : W/O PIVOT SHOES and  
BENDER SHOE**ACCESSORIES**Frame, Cylinder,  
Pivot shoes (2 pieces),  
Angle gauge

PB-15N



Example of bending shoes

**FEATURES**

The PB-15N was designed to bend various sizes and various thickness of steel pipes without wrinkles.

An aluminum alloy frame makes this bender lighter so that it can be easily carried to the job site.

Bending shoes are designed to bend JIS standardized conduit pipe and gas pipe listed in right chart. If the pipe outer diameter being bent is equivalent to the one from the chart, the shoe can be used for the application.

**REMARKS**

Hydraulic pump & Bending shoes are sold separately

Bending Shoe

Thin conduit (A)

Thick conduit (B)

Gas pipe (SGP)

Size	Pipe dia	Size	Pipe dia
A15	15.9	B70	75.2
A19	19.1	B82	87.9
A25	25.4	B92	100.7
A31	31.8	B104	113.4
A39	38.1	SGP-15	21.7
A51	50.8	SGP-20	27.2
A63	63.5	SGP-25	34.0
A75	76.2	SGP-32	42.7
B16	21.0	SGP-40	48.6
B22	26.5	SGP-50	60.5
B28	33.3	SGP-65	76.3
B36	41.9	SGP-80	89.1
B42	47.8	SGP-90	101.6
B54	59.6	SGP-100	114.3

MODEL No.

**NP-400**

Peels insulation jacket of the conductor



NP-400



NP-400

**SPECIFICATIONS**

10 mm to 32 mm O.D. insulated cable (Vinyl or polyethylene jackets) with insulation thickness of 1.5 mm to 3 mm

**SIZE**

80 (W) x 200 (L) mm

**WEIGHT**

740 g

**FEATURES**

The NP-400 can peel insulation from a conductor with an O.D. of 10 to 32 mm and a maximum insulation thickness of 3 mm.

This tool will not work on semiconductors since the cutting blade uses a scoop design to pull insulation away from the wire strands.

It is most commonly used on jacketed aluminum and copper cables for both underground and overhead.

The NP-400 can handle mid-span peeling as well as cable end preparation. A simple rotation and hand force is all it takes to remove the jacket.

**REMARKS**

It is necessary to change the blade depth according to the insulation thickness.

Operating instructions:

- 1 Set the blade depth by rotating the adjusting knob.
- 2 Set the conductor in the peeler.
- 3 Start peeling by rotating the peeler around the conductor.
- 4 Apply hand force against the peeling direction to end the peeling.

MODEL No.

**IZ-325A**

Maximum cutting diameter : Nonferrous 33mm or  
325mm<sup>2</sup> Cu Cable

**SPECIFICATIONS**

Cuts up to 325mm<sup>2</sup> Cu cable

- \* Light weight and compact
- \* Clean square cutting
- \* Easy cutting operation
- \* Durable construction
- \* Forged cutting cable
- \* Reverse operation allowed

**SIZE**

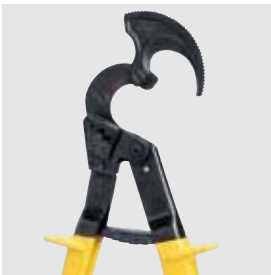
260 (L) mm

**WEIGHT**

610 g



IZ-325A shown with CV 325mm<sup>2</sup> Cu Cable



IZ-325A Moving Blade Opened

**FEATURES**

The IZ-325A Ratchet Cable Cutter was designed to cut up to 325mm<sup>2</sup> or 33mm outer diameter Cu Cable.

The IZ-325A features light weight, easy to use and clean cutting of the material

The cutter is equipped with the release mechanism so that the cutting can be backed out when necessary.

This economical ratchet cutter is ideal for an electrician's wiring preparation tool.

**REMARKS**

Cutting capacity :  
Nonferrous cables only.

Cutting material :  
Polyethylene cable  
600V-CV325mm<sup>2</sup> (31mm OD)  
600V-CV60mm<sup>2</sup> X 3 core(32mm OD)

Multi-core vinyl insulation cable  
VVR 60mm<sup>2</sup> X 3 core (33mm OD)

IV325mm<sup>2</sup> (29mm OD)

To release ratchet, push release lever downward  
Blade moves freely.



MODEL No.

**PG-325**

Applicable to check inner pressure of hydraulic system



PG-325



PG-325

**FEATURES**

The PG-325 is the inline pressure gauge to check inline pressure of the hydraulic system.

It is placed between the hydraulic head and the pump by means of coupler connection.

When the hydraulic pump is activated, inner pressure increases and direct reading of inner pressure is obtained.

**SPECIFICATIONS**

Dial face up to  
100 Mpa

**SIZE**

195 (L) x 105 (W) x 45 (D) mm

**WEIGHT**

1.5 kg

**ACCESSORIES**

Steel carrying case

**REMARKS****IMPORTANT NOTE**

Pressure adjustment of tools require calibrated pressure gauge and appropriate tools to adjust the relief valve.

Improper adjustment may result in too high or too low of inner pressure.

Higher pressure may cause damage to the tool or seals.

Lower pressure results in insufficient tool output causing improper connection of compressed connectors or not cutting specified materials.

MODEL No.

**PG-58**

Applicable to check inner pressure of battery operated pistol type REC-5XXX series tools



PG-58

**SPECIFICATIONS**

Dial face up to  
100 MPa

**SIZE**

195 (L) x 105 (W) x 45 (D) mm

**WEIGHT**

1.0 kg

**ACCESSORIES**

Steel carrying case



PG-58 shown with REC-S540

**FEATURES**

The PG-58 was designed to measure the inner pressure of battery operated pistol type REC-5XXX series tools.

It is attached to the top of hydraulic body by removing the plug and replacing it with the PG-58.

When the tool is activated, inner pressure increases and direct reading of inner pressure is obtained.

Applicable Tools:

REC-S524, REC-S540,  
REC-585YC, REC-55PDF,  
REC-5630, REC-530Y, REC-5750  
LIC-S524, LIC-S540,  
LIC-585YC, LIC-5630

**REMARKS****IMPORTANT NOTE**

Pressure adjustment of tools require calibrated pressure gauge and appropriate tools to adjust the relief valve.

Improper adjustment may result in too high or too low of inner pressure.

Higher pressure may cause damage to the tool or seals.

Lower pressure results in insufficient tool output causing improper connection of compressed connectors or not cutting specified materials.

MODEL No.  
**PG-15F**

Applicable to check output force of:  
6ton hydraulic compression tools.



PG-15F with test dies



PG-15F

### FEATURES

The PG-15F force test gauge was designed to check output force of 6 ton compression tools. It comes complete with necessary test dies for force measurement.

Applicable Tools:  
ECO-50, REC-551F,  
15B, CN-58A,  
EP-50, EP-50H  
REC-558U  
LIC-551F, LIC-558U

### SPECIFICATIONS

Dial face up to 80 kN

### SIZE

250 (L) x 105 (W) x 45 (D) mm

### WEIGHT

2.0 kg

### ACCESSORIES

Steel carrying case  
Test dies for REC-551F and CN-58A

### REMARKS

#### IMPORTANT NOTE

Output force adjustment of tools requires calibrated force test gauge and appropriate tools to adjust the relief valve.

Improper adjustment may result in too high or too low of inner pressure.

Higher pressure may cause damage to the tool or seals.

Lower pressure results in insufficient tool output causing improper connection of compressed connectors.

MODEL No.

**PG-610B**

Applicable to check output force of;  
12 ton and 15 ton hydraulic compression tools



PG-610B



PG-610B shown with REC-3610

### FEATURES

The PG-610B force test gauge was designed to measure output force up to 15 ton. It is used to calibrate 12 ton and 15 ton tools. It was designed to fit in all brand 12 ton tools, and is supplied with U type test dies. When 15 ton tool, EP-610HS2, is calibrated, U die adapter is necessary to adapt test dies.

The PG-610B comes complete with U type test dies and steel carrying case.

Applicable Tools:

EP-410, EP-431, EP-510C,  
EP-410H, EP-431H, EP-510HC,  
EP-610HS-2, LP-430B  
REC-3410, REC-3430, REC-3510,  
REC-3610, REC-5431, REC-5510  
LIC-5431, LIC-5510

### SPECIFICATIONS

Dial face up to 176 kN

### SIZE

250 (L) x 105 (W) x 25 (D) mm

### WEIGHT

1.5 kg

### ACCESSORIES

Steel carrying case  
Test dies (Blank dies for EP-410)

### REMARKS

#### IMPORTANT NOTE

Output force adjustment of tools requires calibrated force test gauge and appropriate tools to adjust the relief valve.

Improper adjustment may result in too high or too low of inner pressure.

Higher pressure may cause damage to the tool or seals.

Lower pressure results in insufficient tool output causing improper connection of compressed connectors.

MODEL No.  
**PG-UC6**

Applicable to check output force of;  
Dieless hydraulic crimping tools



PG-UC6 with test dies



PG-UC6

### FEATURES

The PG-UC6 force test gauge was designed to check direct output force of dieless hydraulic crimping tools. It comes complete with height spacer for different models.

Applicable Tools:  
UC-6B, UC-6FT2,  
REC-5630, REC-5750  
LIC-5630

### SPECIFICATIONS

Dial face up to 80 kN

### SIZE

250 (L) x 105 (W) x 45 (D) mm

### WEIGHT

2.0 kg

### ACCESSORIES

Steel carrying case  
Height spacer for group of models

### REMARKS

**IMPORTANT NOTE**  
Output force adjustment of tools requires calibrated force test gauge and appropriate tools to adjust the relief valve.

Improper adjustment may result in too high or too low of inner pressure.

Higher pressure may cause damage to the tool or seals.

Lower pressure results in insufficient tool output causing improper connection of crimped connectors.

MODEL No.

**PG-H130**

Applicable to check output force of;  
12ton type compression tools.



PG-H130

**FEATURES**

The PG-H130 force test gauge was designed to measure output force up to 12 ton. It is used to calibrate 12 ton tools. It was designed to fit in all brand 12 ton tools, and is supplied with U type test dies.

The PG-H130 comes complete with test dies and steel carrying case.

Applicable Tools:

EP-410, EP-431, EP-510C,  
EP-H130,  
EP-410H, EP-431H, EP-510HC,  
EP-H130H,  
REC-3410, REC-3430, REC-3510,  
REC-H5130, REC-5431,  
REC-5510  
LIC-5431, LIC-5510

**SPECIFICATIONS**

Dial face up to 130 kN

**SIZE**

250 (L) x 105 (W) x 25 (D) mm

**WEIGHT**

1.5 kg

**ACCESSORIES**

Steel carrying case  
Test dies

**REMARKS****IMPORTANT NOTE**

Output force adjustment of tools requires calibrated force test gauge and appropriate tools to adjust the relief valve.

Improper adjustment may result in too high or too low of inner pressure.

Higher pressure may cause damage to the tool or seals.

Lower pressure results in insufficient tool output causing improper connection of compressed connectors.

# Selection of Battery

All IZUMI battery tools can be custom ordered to include batteries and / or chargers.

See selection chart as below to specify selection code when ordering.

- Ex. REC-5431  
 Selection Code "CC"  
 - CH-35EMC or CH-35R (1 piece)  
 - BP-70E (2 pieces)

## Selection Chart

Battery \ Charger	Quick Charger		Standard Charger		Quick DC Charger	
	CH-35R / CH-35EMC		CH-3FC2		CH-70DCH	
	Qty	Code	Qty	Code	Qty	Code
BP-70MH	1	A	-	-	1	M
	2	AA	-	-	2	MM
BP-70EI	1	B	1	G	1	N
	2	BB	2	GG	2	NN
BP-70E	1	C	1	H	1	P
	2	CC	2	HH	2	PP
BP-70I	1	D	1	J	1	Q
	2	DD	2	JJ	2	QQ

## Battery Charger and Battery Pack Compatibility chart. (Charge Time )

	Input Voltage	BP-70E	BP-70EI	BP-70MH	BP-70I
CH-3FC2	AC220~240V	90M	90M	Cannot be used	1H
CH-35EMC CH-35R	AC220~240V AC110~120V	25M	25M	40M	15M
CH-70DCH	DC10V~32V	70M	70M	100M	45M

## Selection Chart of Compression Tools (6-15 ton)

Designed to accommodate hexagonal, circular shell and indent type dies for applying compression fittings to copper, aluminum and ACSR conductors.

Category <small>Ram Stroke (Jaw Opening)</small>	6 ton		12 ton				15 ton	
	19 to 24mm adjustable	15mm	25mm	28mm	30mm	42mm	50mm	
<b>HAND OPERATED</b>	 <b>CN-58A</b>	 <b>EP-50</b>	 <b>EP-410</b>	 <b>EP-H130</b>	 <b>EP-431</b>	 <b>EP-510C</b>	—	
<b>REMOTE HEAD</b>	—	 <b>EP-50</b>	 <b>EP-410H</b>	 <b>EP-H130H</b>	 <b>EP-431H</b>	 <b>EP-510HC</b>	 <b>EP-610HS2</b>	
<b>BATTERY OPERATED BOX TYPE</b>	—	—	 <b>REC-3410</b>	—	 <b>REC-3430</b>	 <b>REC-3510</b>	 <b>REC-3610 (*4)</b>	
<b>BATTERY OPERATED STICK TYPE</b>	—	 <b>ECO-50</b>	—	—	—	—	—	
<b>BATTERY OPERATED GUN TYPE</b>	 <b>REC-558U</b>	 <b>REC-551F</b>	—	 <b>REC-H5130</b>	 <b>REC-5431</b>	 <b>REC-5510</b>	—	
<b>LITHIUM ION BATTERY OPERATED GUN TYPE</b>	 <b>LIC-558U</b>	 <b>LIC-551F</b>	—	—	 <b>LIC-5431</b>	 <b>LIC-5510</b>	—	
<b>APPLICABLE DIES TYPE</b>		 <b>BEKU TYPE DIES</b>	 <b>U-DIES</b>				 <b>P-DIES</b>	 <b>U DIES + P-U ADAPTER (*4)</b>
<b>APPLICABLE COMPRESSION RANGE *</b>	Accepts Burndy W type dies and Keaney / Blackburn O type dies	<Copper> 10 to 150mm <sup>2</sup> <Aluminum / ACSR> 16 to 95mm <sup>2</sup>	<Copper Conductor> upto 250mm <sup>2</sup>			<Copper Conductor> upto 400mm <sup>2</sup>	Accepts Burndy P dies & U dies with P-U Adapter	



# IZUMI Compression Tools (30-200 ton class)

Category	30ton	60ton		100ton	200ton
Power source	SINGLE ACTING			DOUBLE ACTING	
Ram Stroke	26mm	38.5mm		22mm	40mm
Tool	 <b>EP-520C</b>	 <b>EP-60S</b>	 <b>EP-60D</b>	 <b>EP-100W</b>	 <b>EP-200W</b>
Dies					
Compression Range	<Copper> 8mm <sup>2</sup> to 500mm <sup>2</sup>  <Aluminum> 30mm <sup>2</sup> to 590mm <sup>2</sup>	up to 60mm O.D. Sleeve		<Copper> up to 64mm O.D. Sleeve <Aluminum> up to 71mm O.D. Sleeve <Steel> up to 32mm O.D. Sleeve	<Copper> up to 86mm O.D. Sleeve <Aluminum> up to 100mm O.D. Sleeve <Steel> up to 50mm O.D. Sleeve
Pump to Operate	HP-700A, FP-700A, R14E-F1, R14E-A, HPE-2A, HPE-4M, REC-P2		HPE-2D, HPE-4, HPE-4M		HPE-4, HPE-4M



# SELECTION CHART 《Maximum Cutting Capacity》

## Hand Hydraulic Cable Cutter

Cutting Capacity (Outer Diameter / mm)

Model	Output (kN)	Wire Rope (Hemp-core)			Bars				Strands				Other Cables			
		6X7	6X12	6X19	Soft Copper	Soft Aluminium	Soft Steel	Reinforcing	Bare Copper	Bare Aluminium	ACSR	1x7 Guy Steel Wire	1x19 Guy Steel Wire	Telephone cable (CCP)	Lead Sheathed Cable (Telephone Cable)	Under ground cable
REC-S524 LIC-S524	84	18	24	24	24	18	20	16	24	24	24	20	20	-	-	24
REC-530Y	63	-	-	-	-	-	-	-	28	28	19 *	-	-	20	-	30
REC-S540 LIC-S540	68	22	22	22	22	20	20	16	40	40	38	15	19	-	-	40
REC-S3550	120	25	30	30	35	28	22	19	54	54	54	15	20	-	-	50
REC-50 LIC-50	-	-	-	-	-	-	-	-	50	50	-	-	-	-	-	-
REC-54	-	-	-	-	-	-	-	-	54	54	18.6	-	-	-	-	-
REC-585YC LIC-585YC	80	-	-	-	-	-	-	-	60	60	85	-	-	85	-	85
S-200	66	16	20	20	20	16	16	13	20	20	21	15	16	-	-	18
S-240	84	18	24	24	24	18	20	16	24	24	24	20	20	-	-	24
S-320	191	32	32	32	32	32	25	25	32	32	32	32	32	-	-	32
S-400	68	22	25	25	22	20	20	16	41	41	38	15	20	-	-	41

\* Single strand steel core only.

# Hand Hydraulic Cable Cutter

Cutting Capacity (Outer Diameter / mm)

Model	Output (kN)	Wire Rope (Hemp-core)			Bars				Strands				Other Cables			
																
		6X7	6X12	6X19	Soft Copper	Soft Aluminum	Soft Steel	Reinforcing	Bare Copper	Bare Aluminum	ACSR	1x7 Guy Steel Wire	1x19 Guy Steel Wire	Tele-phone cable (CCP)	Lead Sheathed Cable (Tele-phone Cable)	Under ground cable
<b>S-550</b>	124	25	30	30	35	28	22	19	54	54	54	15	20	-	-	50
<b>850</b>	39	-	-	-	-	-	-	-	28	38	-	-	-	85	85	50
<b>SP-20A</b>	39	16	20	20	20	16	16	13	20	20	21	15	16	-	-	18
<b>SP-24</b>	86	18	24	24	24	24	20	16	24	24	24	20	20	-	-	24
<b>YSP-30B</b>	66	-	-	-	-	-	-	-	28	28	19 *	-	-	30	30	30
<b>SP-32</b>	214	32	32	32	32	32	25	25	32	32	32	32	32	-	-	32
<b>SP-40A</b>	76	22	25	25	22	20	20	16	41	41	38	15	20	-	-	41
<b>SP-55A</b>	118	25	30	30	35	28	22	19	50	50	50	15	20	-	-	50
<b>P-60</b>	76	-	-	-	-	-	-	-	60	60	-	-	-	60	60	60
<b>P-85</b>	41	-	-	-	-	-	-	-	28	38	-	-	-	85	85	50
<b>P-85YC</b>	74	-	-	-	-	-	-	-	60	60	-	-	-	85	85	85
<b>P-100A</b>	74	-	-	-	-	-	-	-	42	46	-	-	-	100	100	75
<b>P-132</b>	95	-	-	-	-	-	-	-	42	46	-	-	-	132	132	100

\* Single strand steel core only.

# Hydraulic Hose Selection Chart

Hydraulic Pump		Manual Operated		Motor Driven		Engine Driven Single Acting	Engine Driven Double Acting			Battery Operated	
		HP-700	HP-700A	R14E-F1	R14E-A	HPE-2A	HPE-4M	HPE-2D	HPE-4	REC-P2	
Specification of Pump		Recommended Maximum Length of Hose	Fixed 2m + 1m	3m	Fixed 2m + 8m	15m	15m	20m	15m	20m	6m
		Reservoir Capacity	720cc	720cc	2 liter	3 liter	2.2 liter	10 liter	2.2 liter	10 liter	1 liter
Head Type Tool		Oil Volume Required (cc)									
Hydraulic Compression & Crimping Head	EP-50H	18									
	EP-410H	42									
	EP-431H	50									
	EP-510HC	75									
	EP-610HS2	100									
	EP-520C	132									
	EP-60S	303									(3M)
	EP-60D	303									
	EP-100W	314									
	EP-200W	1,134									
	12A	85									
	16B	44									
Hydraulic Cutter Head	SP-20A	18									
	SP-24	33									
	SP-32	135									
	SP-40A	48									
	SP-55A	120									
	P-60	71									
	P-85	65									
	P-100A	140									
	P-132	220									
	YSP-30B	18									
Hydraulic Puncher	SH-10	40									
	SH-70B	82									(3M)
Hydraulic Bender Squeezer	PB-10N	400									(3M)
	PB-15N	595									(3M)

= Applicable

= Not Applicable

# Size of Conduit JIS standard type

## Thin Conduit (A)

RANGE		Shoe Size	Conduit size		① Outer Diameter	② Inner Diameter	③ Wall Thickness
PB-15N	PB-10N	A15	15	5/8	15.9	13.5	1.2
		A19	19	3/4	19.1	15.9	1.6
		A25	25	1	25.4	22.2	1.6
		A31	31	1, 1/4	31.8	28.6	1.6
		A39	39	1, 1/2	38.1	34.9	1.6
		A51	51	2	50.8	47.6	1.6
		A63	63	2, 1/2	63.5	59.5	2.0
A75	75	3	76.2	72.2	2.0		
			(inch)	(mm)	(mm)	(mm)	

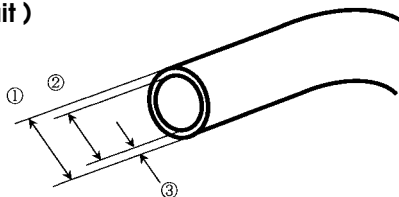
## Thick Conduit (B)

RANGE		Shoe Size	Conduit size		① Outer Diameter	② Inner Diameter	③ Wall Thickness
PB-15N	PB-10N	B16	16	1/2	21.0	16.4	2.3
		B22	22	3/4	26.5	21.9	2.3
		B28	28	1	33.3	28.3	2.5
		B36	36	1, 1/4	41.9	36.9	2.5
		B42	42	1, 1/2	47.8	42.8	2.5
		B54	54	2	59.6	54.0	2.8
		B70	70	2, 1/2	75.2	69.6	2.8
		B82	82	3	87.9	82.3	2.8
	B92	92	3, 1/2	100.7	93.7	3.5	
B104	104	4	113.4	106.4	3.5		
			(inch)	(mm)	(mm)	(mm)	

## Gas Pipe (SGP)

RANGE		Shoe Size	Conduit size		① Outer Diameter	② Inner Diameter	③ Wall Thickness
PB-15N	PB-10N	SGP 15	15	1/3	21.7	16.1	2.8
		SGP 20	20	3/4	27.2	21.6	2.8
		SGP 25	25	1	34.0	27.6	3.2
		SGP 32	32	1, 1/4	42.7	35.7	3.5
		SGP 40	40	1, 1/2	48.6	41.6	3.5
		SGP 50	50	2	60.5	52.9	3.8
		SGP 65	65	2, 1/2	76.3	67.9	4.2
		SGP 80	80	3	89.1	80.7	4.2
		SGP 90	90	3, 1/2	101.6	93.2	4.2
		SGP 100	100	4	114.3	105.3	4.5
			(inch)	(mm)	(mm)	(mm)	

## ( Conduit )



# HYDRAULIC TOOL MECHANISM

## 1. Hand Hydraulic

Hand hydraulic tools function using the mechanism described below.

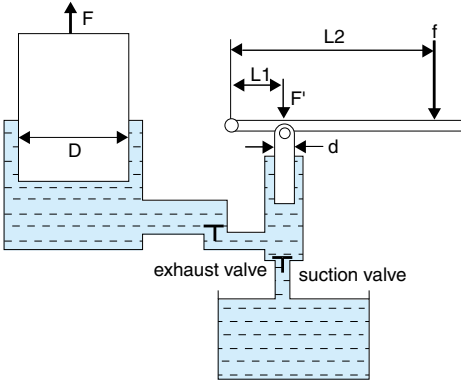


Fig 1

1. By raising the pump handle, the small piston draws oil from the reservoir into the small chamber. The amount of oil drawn from the reservoir is the same volume as the small piston displaces.
2. By lowering the pump handle, the same amount of oil drawn from the reservoir goes into the large chamber.
3. By repeating this operation, bigger piston moves upward.

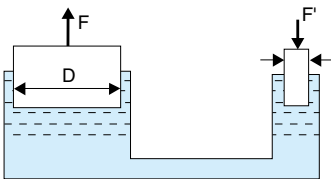


Fig 2

- D: the outer diameter of the large piston
- d: the outer diameter of the small piston
- L1: the distance from the pivot point to small piston
- L2: the distance from the pivot point to pumping position
- f: Handle force
- F': Force applied at the small piston
- F: Force developed at the large piston

### NOW LET'S CHECK THE OUTPUT DEVELOPED BY HANDLE FORCE f

Fig 2 describes Pascal's law and shows force acts on the small piston F' creates intensified force F at large piston.

The pressure inside of the vessel is the same at any location and shown as follows.

$$P = \frac{\text{Force}}{\text{Area}} = \frac{F}{\frac{\pi}{4} D^2} = \frac{F'}{\frac{\pi}{4} d^2}$$

So, F is now shown as

$$F = \frac{D^2}{d^2} F' \dots \dots \dots (A)$$

Now let's go back to Fig1 and apply Pascal's law.

Force acts on the small piston F' is shown as follows.

$$F' \times L1 = f \times L2 \quad \text{so that} \quad F' = \frac{L2}{L1} f \dots \dots \dots (B)$$

And therefore, the developed force F of the large piston is shown below.

$$F = \frac{D^2}{d^2} \frac{L2}{L1} f$$

## NOW LET'S CHECK THE PISTON MOVEMENT PER HANDLE STROKE

1. The oil volume suctioned by the small piston

$$\frac{\pi}{4} d^2 \times \text{small piston movement}$$

2. This suctioned oil goes into the large chamber when the pump handle is lowered.  
(The amount of oil moved from the small to large chamber is the same.)

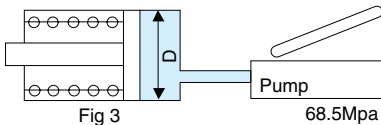
$$\frac{\pi}{4} d^2 \times \text{small piston movement} = \frac{\pi}{4} D^2 \times \text{large piston movement}$$

Therefore, the large piston movement is shown below.

$$\text{Large piston movement} = \frac{d^2}{D^2} \times \text{small piston movement}$$

## 2. Remote Head (Pump Separate Type/Spring Return Type)

Remote head type hydraulic tools do not have a pumping mechanism, therefore, they require separate hydraulic pumps.



The output force of the head is determined by pump output pressure and all Izumi hydraulic pumps have an output pressure of 700 kgf/cm<sup>2</sup>.

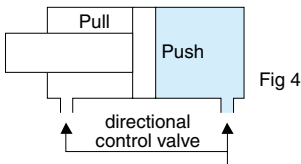
**TOOL OUTPUT FORCE = PISTON AREA X PUMP OUTPUT PRESSURE**

$$\text{OUTPUT (kN)} = \frac{\frac{\pi}{4} D^2 (\text{cm}^2) \times 68.5\text{Mpa}}{10}$$

where D = piston diameter

## 3. Double Acting Tool

Double acting cylinder has no spring for piston retraction but has a pulling chamber. By supplying oil into the pulling chamber, the piston is forcibly retracted. The advantage of the double acting tool is this forced retracting mechanism and it has the following features.



1. Faster piston retraction compared to spring return system
2. No jamming for cutters
3. No connector binding for compression tools

To operate double acting tools, a hydraulic pump must have a 4 way 3 position directional control valve to change its oil flow. (For piston advancement the control valve sets the oil path to the pushing chamber, for piston retraction the control valve sets the path to the pulling chamber.)

### 4. The Relief Valve (Bypass Valve)

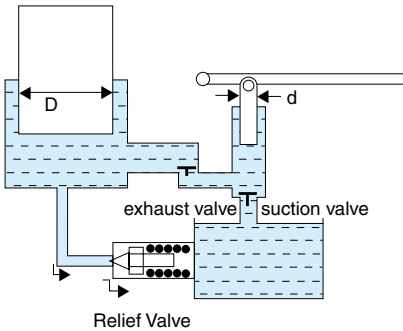


Fig 5

Most of our hydraulic tools are equipped with a relief valve except hand hydraulic cutters. This relief valve functions when oil pressure reaches 68.5 Mpa and bypasses oil to the reservoir.

So, it regulates tool output each time tool functions.

For some compression tools and pumps, the relief valve is made into a cassette style so that a whole cassette can be replaced without disassembling the tool.

A schematic of the relief valve is shown in Fig 5.

### 5. Double Speed Pumping (Two Stage Pumping)

As mentioned in 1. Hand hydraulic, the piston movement is very little per handle stroke and it is sometimes very time consuming.

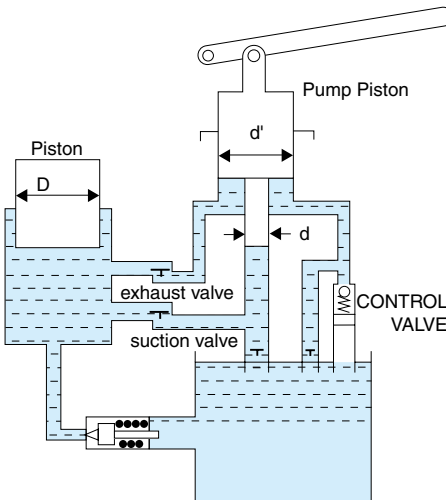


Fig 6

However, until the piston reaches the object being cut or compressed, there is not much force required. Therefore, the small piston (pump piston) can be made larger to advance the piston rapidly.

For this reason, there is a system called double speed pumping in which small and large pistons are made into one solid pump piston.

A schematic of the double pump piston is shown in Fig 6.

In Fig 6, the Control Valve is shown.

This control valve is needed when the pumping stage changes from the large-pump-piston-stage to the small-pump-piston-stage.

When the pressure developed by the large pump piston reaches the preset pressure of the control valve, the valve (Ball) opens and oil drawn by the large pump piston bypasses to the reservoir through

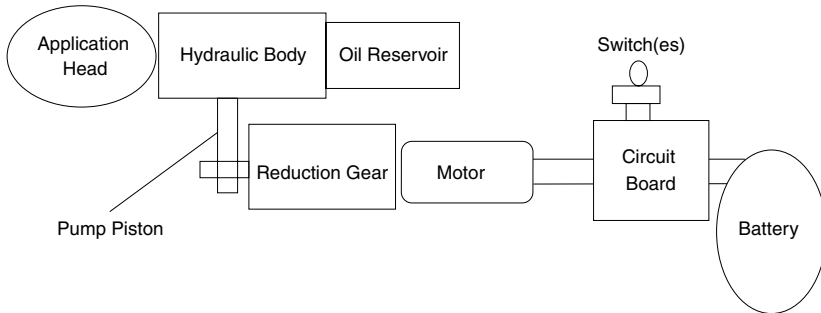
this valve. From this point on, no pumping is done by the large pump piston. Then only the small pump piston draws oil and starts building pressure to the high stage.

If the control valve does not exist, then pressure is built up in the large pump piston and it will reach a point that handle force will become greater than humanly possible.



## BATTERY OPERATED HYDRAULIC TOOLS

Years of hydraulic crimping and cutting technology at Izumi invented a line of battery operated hydraulic tools. Izumi is the world's first manufacturer to make hydraulic tools powered by rechargeable Ni-Cd battery. Mechanism of battery operated hydraulic tools is very simple. Manual pumping is replaced by reciprocating motion of pump piston driven by DC motor using cam action. Below diagram shows groups of parts consist of E-Robo tools.



**APPLICATION HEAD:** Application heads are usually the same heads used for hand hydraulic units like EP-410, 15B, 9H-150, S-20A etc. As a concept of REC tools, many of commonly used application heads will be adapted for REC tools to replace hand hydraulic units.

**HYDRAULIC BODY:** Hydraulic Body is to create 68.5 Mpa or 10,000 PSI of oil pressure in the cylinder to develop designated output tonnage of 5 to 12 tons. Hydraulic body has following four major valves as described in HYDRAULIC MECHANISM section in this catalogue. Suction, Exhaust, Release and Relief Valve. When repairing Hydraulic Body, keep in mind function of those four valves.

**PUMP PISTON:** Pump Piston connects Hydraulic body and Reduction Gear. And it receives reciprocation movement. Pumping is done by this Pump Piston reciprocation just like other hand hydraulic tools.

**REDUCTION GEAR:** Reduction Gear is driven by DC motor and reduces RPM to create sufficient force to push Pump Piston.

**MOTOR:** 14.4 Volt DC motor is powered by battery pack.

**CIRCUIT BOARD:** Circuit board senses supplied voltage and if it is too low, LED lights up to signal few crimp cycles remain by the battery. For 12 ton models, circuit board also controls release mechanism to push release valve electrically by cam action driven by separate drive motor.

**SWITCH(ES):** Switch(es) functions to turn the motor ON and OFF.

**BATTERY :** Nickel Cadmium battery.  
Nickel-metal hydride battery.

# COMPRESSION DIES



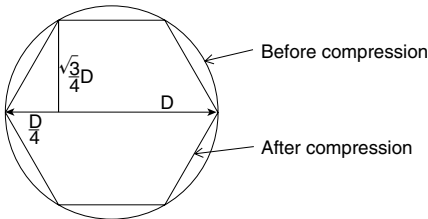
Compression dies are a critical part of compressor component since they influence electric characteristics of jointed conductors. As a compression tool manufacturer, we are also involved with die making. However, due to various standards and various fittings by each manufacturer, we do not have our own standard to meet each manufacturer's fittings. With detailed customer's information, we try our best to make suitable dies.

The following is example of information we need to make custom dies.

1. Fitting catalog number as well as conductor size.
2. Recommended die number already exists by fitting manufacturer.
3. Fitting outer diameter and inner diameter.
4. Type of conductor to be jointed.(Aluminum, Copper, ACSR, AAAC etc.)
5. Drawing of dies, groove dimension etc.

Usually fittings are compressed in an inscribed hexagon so that die across vertex distance equals to fitting outer diameter.

And compression ratio can be shown below.



D:Fitting outer diameter,  
Die across vertex distance

Area before compression:  $\frac{\pi}{4} D^2$

Area after compression:  $\frac{3}{8} \sqrt{3} D^2$

Compression ratio:  $\frac{\frac{3}{8} \sqrt{3} D^2}{\frac{\pi}{4} D^2} = 0.827$

However, there are many other ways of compression defined by each fitting manufacturer and some have their complete line of dies.

If cutomers wish to machine their own grooves, we are also ready to supply blank dies.

In any case dies are a very important part of compression tools.

Please be aware of suggested die number by fitting manufacturer when fittings are purchased.

Next 6 pages show the list of dies available from Izumi.

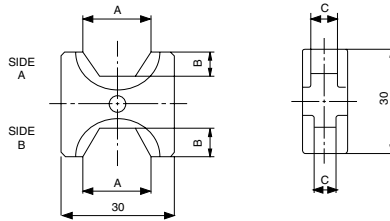
Equivalents indicated are closest equivalents and does not infer that they are identical, interchangeable or exact duplicates.

Izumi does not assume responsibility for error, omissions or subsequent changes.

### WIRE GAUGE

AWG (MCM)	mm <sup>2</sup>	JIS	DIN
30	0.05		
28	0.05		
26	0.13		
24	0.20		
22	0.32		
20	0.52		
18	0.81		0.9
16	1.32	1.5	1.5
14	2.08	2	2
12	3.33		4
10	5.27	5.5	6
8	8.30	8	10
6	13.30	14	16
5	16.78		
4	21.09	22	25
3	26.57		
2	33.94	38	35
1	42.22		
1/0	53.52	60	50
2/0	67.51		70
3/0	85.16	80	95
4/0	107.22	100	
250 MCM	126.68	125	120
300	152.01	150	150
350	177.38		185
400	202.68	200	240
500	253.35	250	
600	304.02	325	300
700	354.69		
750	380.03		
800	405.36	400	400
900	456.03		
1000	506.70	500	500

## EP-50 DIES



## HEXAGONAL DIES FOR COPPER & ALUMINUM TERMINALS

(Suitable for DIN 46235 TERMINALS)

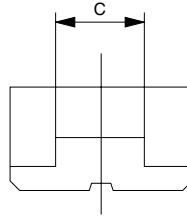
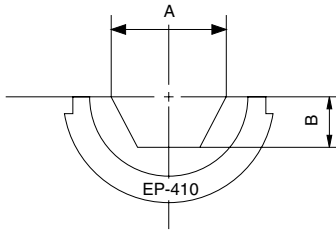
DIE NO.	SIDE		A	B	C
K6 & K8	A (K6)	Cu10	6.2	2.2	12
	B (K8)	Cu16	8.2	3.0	12
K10 & K12	A (K10)	Cu25 Al 16	9.7	3.6	12
	B (K12)	Cu35 Al 25	11.8	4.4	9
K14 & K16	A (K14)	Cu50 Al 35	13.8	5.3	8
	B (K16)	Cu70 Al 50	15.8	6.0	8
K18 & K20	A (K18)	Cu95 Al 70	18.0	7.0	7
	B (K20)	Cu120 Al 95	19.8	7.6	6

[mm<sup>2</sup>]

[mm]



## EP-410 DIES [Hexagonal Dies]



### HEXAGONAL DIES FOR COPPER & ALUMINUM TERMINALS

(Suitable for DIN 46235 TERMINALS)

DIE NO.		A	B	C
K6	Cu 10	6.2	2.2	12
K8	Cu 16	8.2	3.0	12
K10	Cu 25	9.7	3.6	12
	Al 16			
K12	Cu 35	11.8	4.4	14
	Al 25			
K14	Cu 50	13.8	5.3	14
	Al 35			
K16	Cu 70	15.8	6.0	14
	Al 50			
K18	Cu 95	18.0	7.0	14
	Al 70			
K20	Cu 120	19.8	7.6	14
	Al 95			
K22	Cu 150	22.3	8.7	13
	Al 120			
K25	Cu 185	24.3	9.6	12
	Al 150			
K28	Cu 240	27.8	11.5	11
	Al 185			
K32	Cu 300	31.5	13.6	9
	Al 240			
K34	Cu 400	33.7	14.5	7
	Al 300			

[mm<sup>2</sup>]

[mm]



### HEXAGONAL DIES

(Suitable for TERMINALS wall thickness little less than DIN 46235 terminals)

DIE NO.	A	B	C
10	5.98	2.59	12
16	7.20	3.12	12
25	8.48	3.67	12
35	10.00	4.33	14
50	11.60	5.02	14
70	13.73	5.95	14
95	15.90	6.88	14
120	17.98	7.79	14
150	20.10	8.70	13
185	22.33	9.67	12
240	25.43	11.01	11
300	28.44	12.32	9.5

[mm<sup>2</sup>]

[mm]

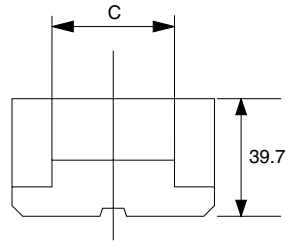
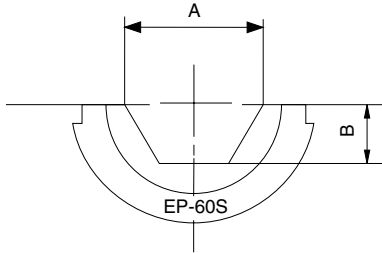
### HEXAGONAL DIES FOR COPPER TERMINALS

(Suitable for TERMINALS commonly used in South Asia)

DIE NO.		A	B	C
UL-10	Cu 10	6.2	2.2	9
UL-16	Cu 16	7.1	2.6	14
UL-25	Cu 25	8.8	3.2	14
UL-35	Cu 35	10.6	3.8	14
UL-50	Cu 50	12.4	4.7	16
UL-70	Cu 70	14.6	5.7	18
UL-95	Cu 95	17.4	6.3	16
UL-120	Cu 120	19.4	7.1	14
UL-150	Cu 150	21.2	7.8	13
UL-185	Cu 185	24	8.6	12
UL-240	Cu 240	26.5	9.7	10
UL-300	Cu 300	30	11	9

[mm<sup>2</sup>]

[mm]



### EP-60S DIES ALCOA TYPE DIES (HEXAGONAL)

DIE NO.	A	B	C
10SH	15.9	6.9	32.0
12SH	19.3	8.4	23.9
14SH	22.2	9.5	25.4
16SH	25.4	10.9	16.8
18SH	28.6	12.3	15.2
20SH	31.7	13.4	19.0
75SH	10.7	4.6	35.1
76SH	12.7	5.5	28.4
20AH	31.8	13.5	59.7
24AH	38.1	16.3	49.5
27AH	42.8	18.2	43.2
30AH	47.6	20.2	57.0
34AH	54.0	23.0	46.2
36AH	57.2	24.2	44.5
74AH	20.8	8.7	62.0
75AH	25.4	10.6	62.0
76AH	30.2	12.6	61.2

### EP-610HS DIES

HT61BP	P39RT equivalent
HT31BR	P40RT
HT61BU	P44RT
HT61BV	P46RT
HT61FC	P39ART
HT61HJ	P40ART
HT61FD	P44ART
HT61AC	PKR



### HEXAGONAL DIES

#### FOR COPPER TERMINALS

Suitable Terminals wall thickness little less than **Din 46235** Terminals.

DIE NO.	Conductor size	O.D. of Lug	A	B	C
300	Cu 300	28.4	29.4	12.49	10.8
400	Cu 400	32.8	35.9	15.3	9
500	Cu 500	36.7	37.8	15.89	8.2
630	Cu 630	41.2	43.8	18.49	7.2

[mm<sup>2</sup>]

[mm]

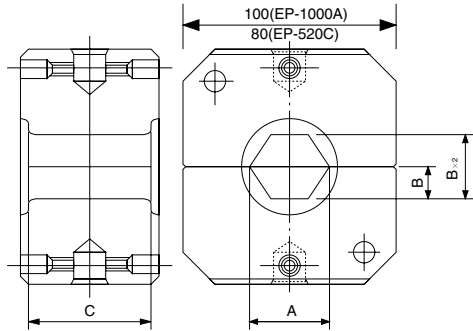
### DIES FOR H TYPES

Following Dies for H-TAP use are available.

N58	EP-410	EP-610HS1
HT58G (WBG)	HT41G (UBG)	HT61AC (PKR)
HT58AK (WO)	HT41AK (UO)	
	HT41V (UD)	
	HT41X (UD3)	
	HT41AJ (UN)	



## EP-520C DIES [Hexagonal Dies]



DIES FOR COPPER CONDUCTOR (Suitable for JIS C2804 Terminals)

Tool	DIE NO.	EP-520C			EP-1000A		
		A	B	C	A	B	C
EP-1000A EP-520C	1000-64				64	27.71	19
	725-850-56				56	24.26	22
	600-51				51	22.08	24
	400-500-47	47	20.35	15	47	20.35	26
	325-42	42	18.19	17	42	18.19	29
	250-38	38	16.45	19	38	16.45	32
	240-36	36	15.59	20	36	15.59	34
	180-200-32	32	13.86	22	32	13.86	38
	150-29	29	12.56	24	29	12.56	42
	110-125-26	26	11.26	27	26	11.26	47
	75-100-23	23	9.96	31	23	9.96	53
	45-70-19	19	8.23	37	19	8.23	60
	22-38-14	14	6.06	42	14	6.06	60
	8-14-12	12	5.20	25	12	5.20	25

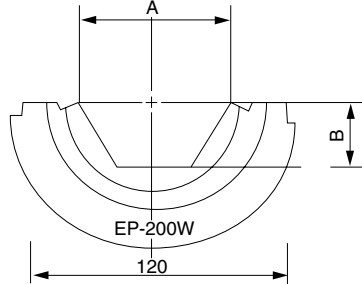
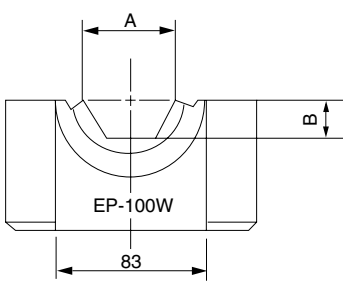
DIES FOR ALUMINUM CONDUCTOR (Suitable for JIS C2804 Terminals)

Tool	DIE NO.	EP-520C			EP-1000A		
		A	B	C	A	B	C
EP-1000A EP-520C	980-1000-71				71	30.74	40
	850-65				65	28.15	45
	600-725-60				60	25.98	48
	500-590-52	52	22.52	33	52	22.52	55
	380-430-48	48	20.78	39	48	20.78	60
	400-44	44	18.55	40	44	18.55	60
	325-42	42	18.19	42	42	18.19	60
	300-38	38	15.95	42	38	15.95	60
	200-250-34	34	14.20	42	34	14.20	60
	125-180-30	30	12.50	42	30	12.50	60
	80-110-26	26	11.26	42	26	11.26	60
	45-70-22	22	9.53	42	22	9.53	60
	30,38-18	18	7.79	42	18	7.79	60
	30,38-16	16	6.93	42	16	6.93	60

DIE NO. has a following meaning.

(500-590-52 : 500-590 mm<sup>2</sup> conductor use, die across vertex distance is 52mm)

### EP-100W/EP-200W DIES



#### FOR STEEL SLEEVES

C : Die Width

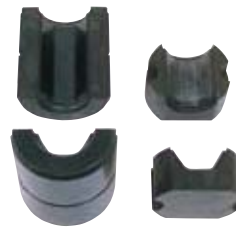
DIE NO.	A	B	C (100/200)
S8.5	8.5	3.7	50 -
S10	10	4.3	45 -
S12	12	5.2	40 -
S16	16	6.9	40 -
S18	18	7.8	35 -
S20	20	8.7	35 -
S22	22	9.5	35/70
S23	23	10.0	30 -
S24	24	10.4	30/60
S26	26	11.3	30/60
S28	28	12.1	28/60
S30	30	12.99	25 -
S32	32	13.9	25 -
S44	44	19.1	- 35
S50	50	21.7	- 30

#### FOR COPPER LUGS

DIE NO.	A	B	C (100/200)
C14	14	6.1	60 -
C17	17	7.4	60 -
C19	19	8.2	60 -
C23	23	10.0	60 -
C26	26	11.3	60 -
C29	29	12.6	60 -
C32	32	13.9	60 -
C36	36	15.6	55 -
C38	38	16.5	55 -
C42	42	18.2	55 -
C47	47	20.4	50 -
C50	50	21.7	50 -
C51	51	22.0	50 -
C54	54	23.4	50 -
C56	56	24.3	40 -
C57	57	24.7	40 -
C63	63	27.3	- 70
C64	64	27.7	35 -
C68	68	29.4	- 70
C73	73	31.6	- 65
C78	78	33.8	- 64
C85	85	36.8	- 60
C86	86	37.23	- 60

#### FOR ALUMINUM SLEEVES

DIE NO.	A	B	C (100/200)
A22	22	9.5	75/128
A26	26	11.3	75/128
A30	30	12.5	75/128
A34	34	14.2	75/128
A38	38	16.0	75/128
A42	42	18.2	75/128
A44	44	18.6	75/128
A48	48	20.8	75/128
A52	52	22.5	75/128
A60	60	26.0	75/128
A65	65	28.2	75/128
A68	68	29.4	75/128
A71	71	30.7	75/128
A76	76	32.9	- 128
A90	90	39.0	- 128
A100	100	43.3	- 128





## COMPRESSION TOOLS FOR TAP-OFF CONNECTORS

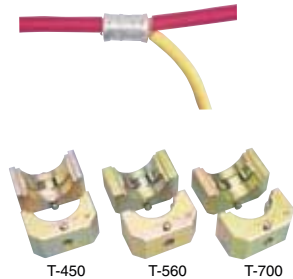
To branch conductor from main run, compress IZUMI TAP-OFF CONNECTORS (C-CONNECTORS) by IZUMI COMPRESSION TOOLS exclusively designed for TAP-OFF purpose.



**No. 15B**  
for up to T-122



**No. 16B**  
for up to T-365



**EP-520C**  
for up to T-700

MODEL	TYPE	OUTPUT (kN)	WEIGHT (kgs)	LENGTH (mm)	APPLICABLE RANGE	DIES	STANDARD ACCESSORIES	REMARKS
NO.15B	Hand Hydraulic	59	3kgs	465	T-11 - T-122	T-11*, T-16*, T-20, T-26, T-44 T-60, T-76, T-98, T-122	1. Plastic Case 2. Dies-7 sets(2pcs/set)	Dies for non-insulated terminals are available on request. indenter: 8-14, 22-60 Nest Dies: 8, 14, 22, 38, 60
NO.16B	Hydraulic Head	118	4.5kgs	284	T-20 - T-365	T-20*, T-26*, T-44*, T-60* T-76*, T-98*, T-122*, T-154, T-190, T-240, T-288, T-365	1. Steel Case 2. Dies-5 sets(2pcs/set)	Indenter: 8-14, 22-60, 70-100 Nest Dies: 8, 14, 22, 38, 60, 80, 100
EP-520C	Hydraulic Head	294	17.3kgs	370	T-154 - T-700	T-154*, T-190*, T-240*, T-288*, T-365*, T-450*, T-560*, T-700*	1. Steel Case Dies sold separately	

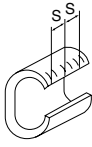
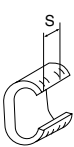
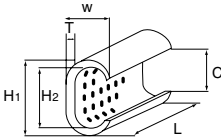
(\*) Marks show OPTIONAL DIES (Available on request)

# IZUMI TAP-OFF CONNECTOR (C-CONNECTOR)

The range of C-CONNECTORS are manufactured in 'C' shaped copper section for connection of main and tap copper conductors.

- Approved by NTT corporation
- Reliability is ensured by passing tests specified by JIS C 2810
- Suitable for connecting copper conductors in both indoor and outdoor such as wiring in building or wiring in tunnel
- Tin plated to avoid rusting

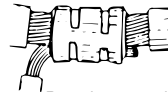
## C-CONNECTOR SPECIFICATIONS



(T-11 ~ T-122)  
except T-20, T-26, T-44

(T-154 ~ T-700)

Connector Size	Dimensions(mm)						Installation		Total sectional area of applicable wire	Per Package
	H <sub>1</sub>	H <sub>2</sub>	W	L	T	C	# of Crimps	S		
T-11	9.5	6.3	6.2	12	1.6	4.0	2	7	7.5~11mm <sup>2</sup>	500
T-16	11.8	7.8	7.8	13	2.0	5.0	2	8	11.5~16	500
T-20	12.8	8.4	9.7	13	2.9	5.1	1	-	14~20	500
T-26	14.7	10.2	10.9	16	3.2	6.5	1	-	21~26	300
T-44	19.0	13.4	14.4	20	4.0	8.5	1	-	27~44	150
T-60	21.0	15.4	15.1	22	4.0	9.7	2	11	45~60	100
T-76	24.4	17.3	17.6	22	5.0	10.8	2	11	61~76	80
T-98	27.8	20.8	18.8	25	5.0	13.8	2	11	77~98	60
T-122	29.8	22.1	21.2	26	5.5	13.5	2	12	99~122	50
T-154	34.0	25.7	24.4	28	6.0	17.0	3	8.5	123~154	50
T-190	37.0	28.5	25.4	35	6.0	17.4	3	10.5	155~190	35
T-240	40.0	30.2	28.5	40	7.0	19.0	3	13	191~240	25
T-288	44.5	34.7	31.1	45	7.0	22.3	3	14.5	241~288	15
T-365	47.5	37.7	34.0	50	7.0	24.8	3	16	289~365	13
T-450	57.0	42.5	41.0	60	10.0	28.0	3	18.5	366~450	10
T-560	62.0	46.0	45.0	65	11.0	31.0	3	20	451~560	8
T-700	68.0	51.0	49.5	70	12.0	34.0	3	21	561~700	6



Branch connection



Parallel connection

## COMBINATION CHART (Applicable range & Tool to be used)

Conductor Tap Main Conductor	2 (φ1.6)	3.5 (φ2.0)	5.5 (φ2.6)	8mm <sup>2</sup>	14	22	30	38	50	60	80	100	125	150	200	250	325
5.5(φ2.6)	11	11	11														
8mm <sup>2</sup>	11	16	16														
14		20	20	26	44												
22		26	26	44	44	44											
30		44	44	44	44	60	60										
38		44	44	44	60	60	76	76									
50		60	60	60	76	76	98	98	122								
60		76	76	76	76	98	98	98	122	122							
80		98	98	98	98	122	122	122	154	154	190						
100		122	122	122	122	122	154	154	190	190	240	240					
125		154	154	154	154	154	190	190	190	240	240	288	288				
150		154	154	154	154	154	190	190	240	240	288	288	365	365			
200		240	240	240	240	240	240	240	288	288	365	365	365	365	450		
250			288	288	288	288	288	288	365	365	365	365	450	450	450	560	
325			365	365	365	365	365	365	450	450	450	450	560	560	560	700	700
400							450	450	450	560	560	560	560	560	700	700	
500							560	560	560	700	700	700	700	700	700		
600							700	700	700	700	700						

Figures in Table show Connector Size T-

Tooling Guide: EH-2C No.15B No.16B EP520C

**ISO 9001**  
**ISO 14001**  
**BUREAU VERITAS**  
Certification



**IZUMI**



[WWW.CABLEJOINTS.CO.UK](http://WWW.CABLEJOINTS.CO.UK)  
**THORNE & DERRICK UK**  
TEL 0044 191 490 1547 FAX 0044 477 5371  
TEL 0044 117 977 4647 FAX 0044 977 5582  
[WWW.THORNEANDDERRICK.CO.UK](http://WWW.THORNEANDDERRICK.CO.UK)