



Image Watermark in Universal Printer PCL6 driver

Table of Contents

Introduction	2
What is it?	2
How does it work?	2
Create a new image watermark	3
Select image watermark attributes	5
Use other settings in the printer driver to print the image watermarks	8
Selecting a previously used image file	10
Deleting an image watermark	10
Pre-Configuration	11

Introduction

The ability to add an image watermark has been added to Universal Printer Driver. This feature allows the user to print an image watermark with different attributes like layering, scaling and predefined positioning on each printed page. This feature is available in PCL6 driver only.

What is it?

This feature will expand the current watermark options available by adding a new option (**Watermark Image**) under the **Effects** tab of **Printing Preferences**. There is no impact on the existing text watermark functionality. The user will be able to select an image watermark in the current **Watermarks** drop-down menu and select different attributes, including layering, scaling, positioning and lightness. Image watermarks can be printed in predefined position. The supported file formats for image watermarks are .jpeg,.jpg, .png and .bmp.

How does it work?

You can create a new image watermark, and then select image watermark attributes.

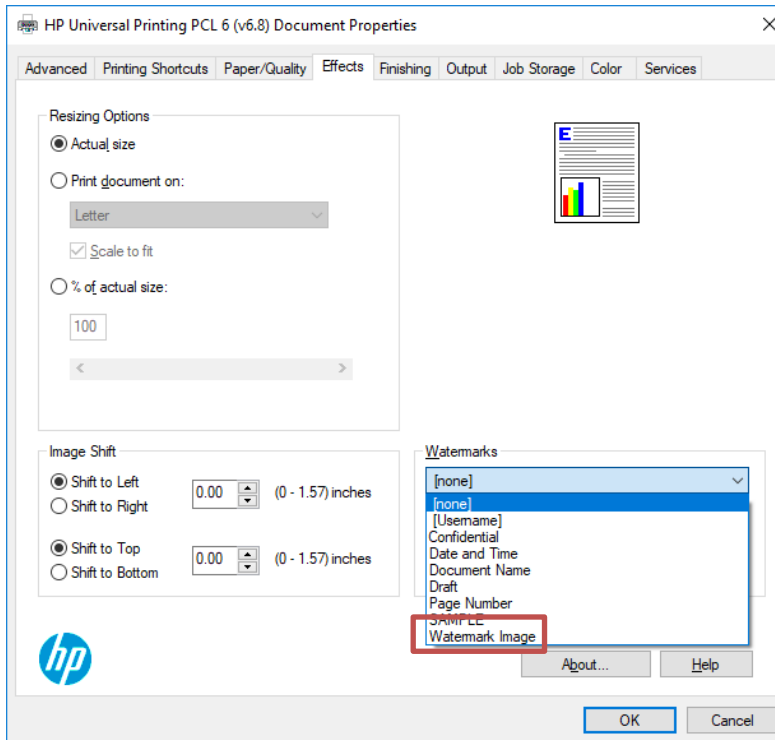
Modify the image watermarks using other settings. If required, you can easily delete an image watermark

- Create a new image watermark
- Select image watermark attributes
- Use other settings to print an image watermark
- Select a previously used image file
- Delete an image watermark

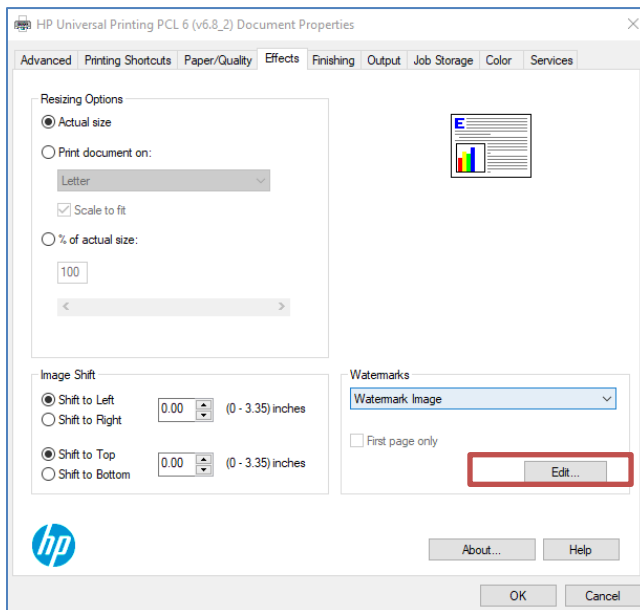
Create a new image watermark

Follow these steps to create a new image watermark:

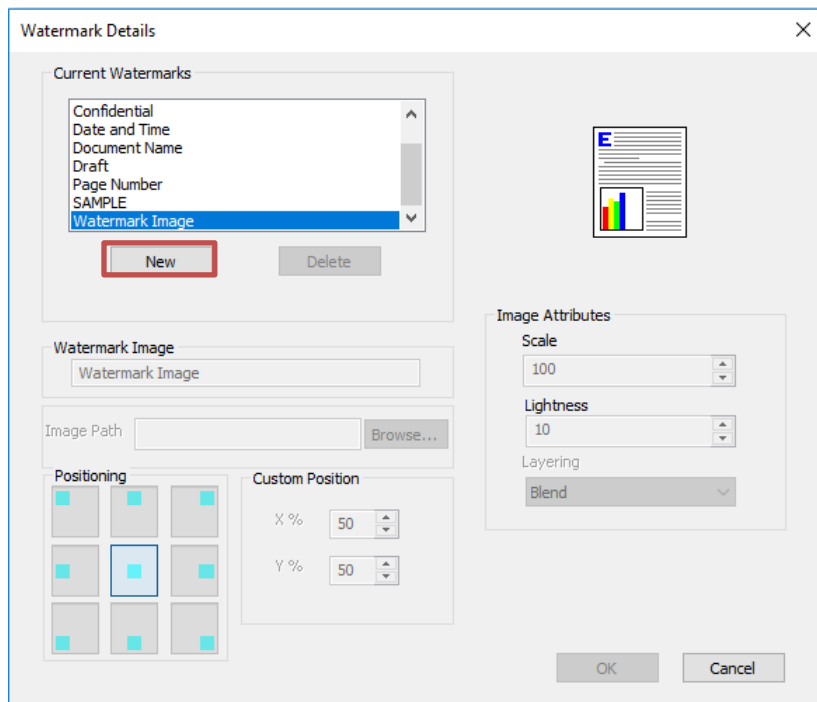
1. In the f Printing Preferences screen, click the **Effects** tab, and under **Watermarks** drop-down menu, select **Watermark Image**.



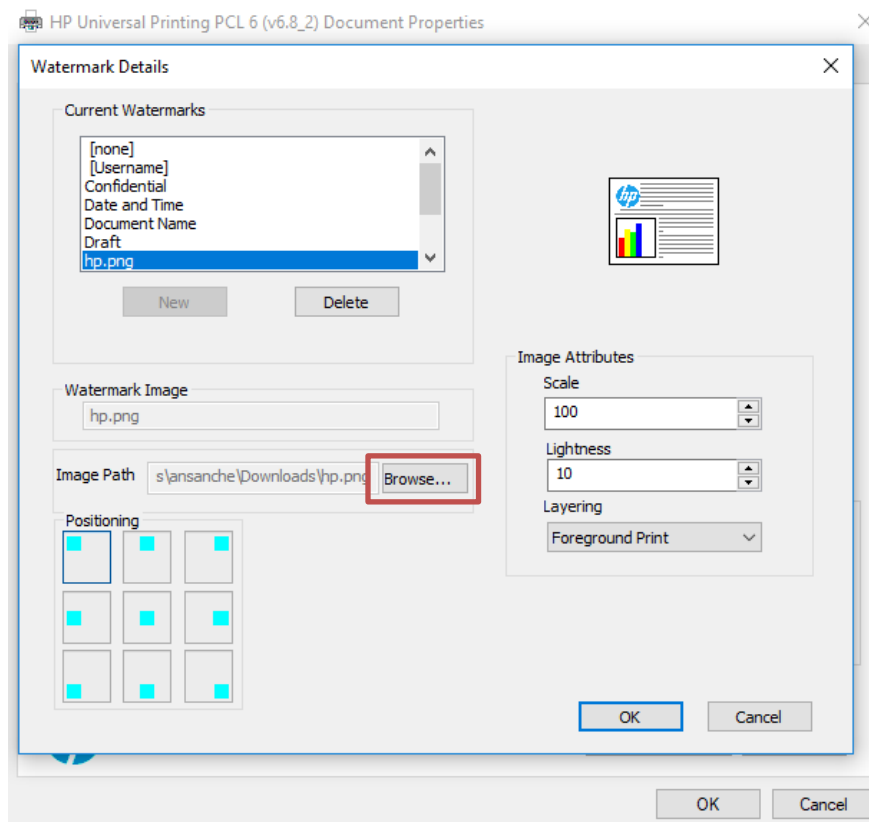
2. Click **Edit** to display the Watermark Details screen.



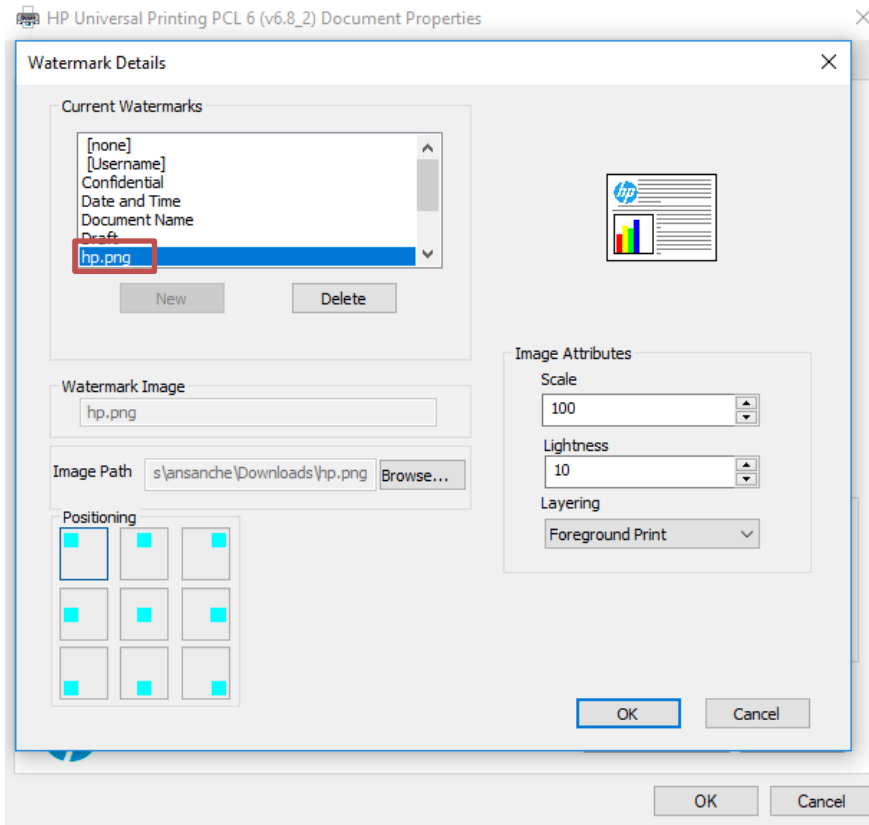
3. In the **Watermark Details** screen, click the **New** button.



4. To select the image file, click the **Browse** button, and then select a supported image file (.jpeg,.jpg .png, .bmp, for example).



5. When an image file is selected, the user will see the image file added in the **Current Watermarks** list box.



Select image watermark attributes

In the **Watermark Details** page, the user can select different attributes. The preview of the image watermark along with related attribute changes will be visible in the watermark detail page.

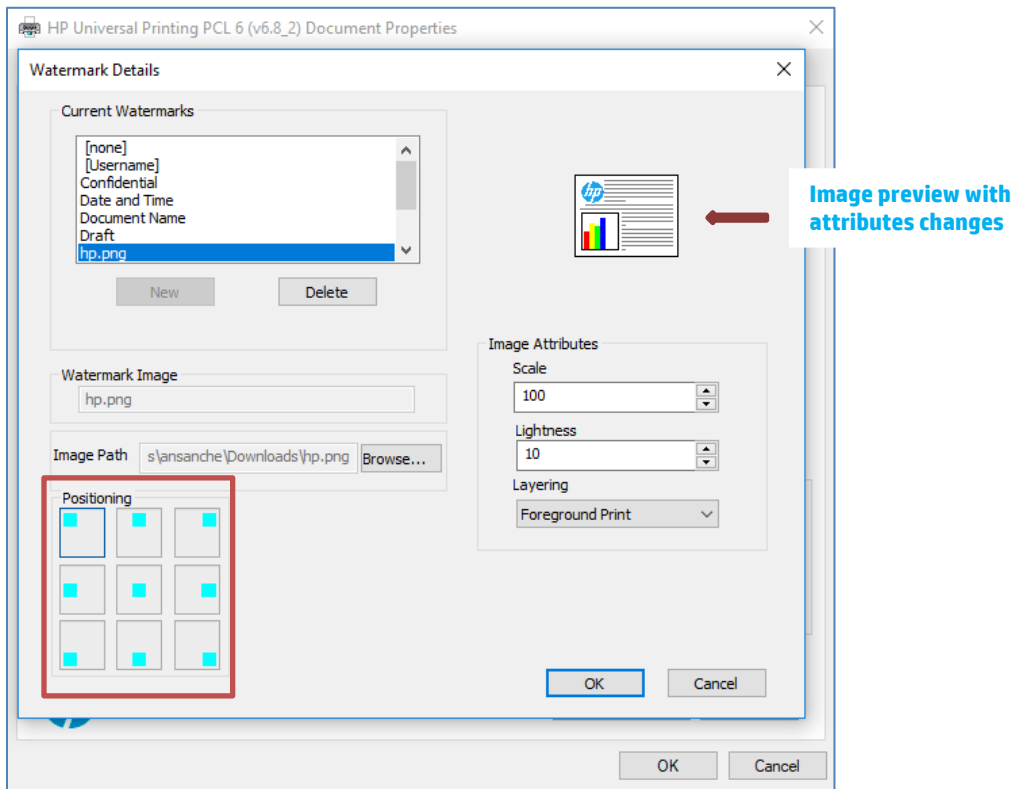
In the **Watermark Details** screen, select an option for the following attributes :

- Positioning : This option allows the user to position the watermark in the different location on the page.

The default position is **Center**.

There are 9 predefined positions available:

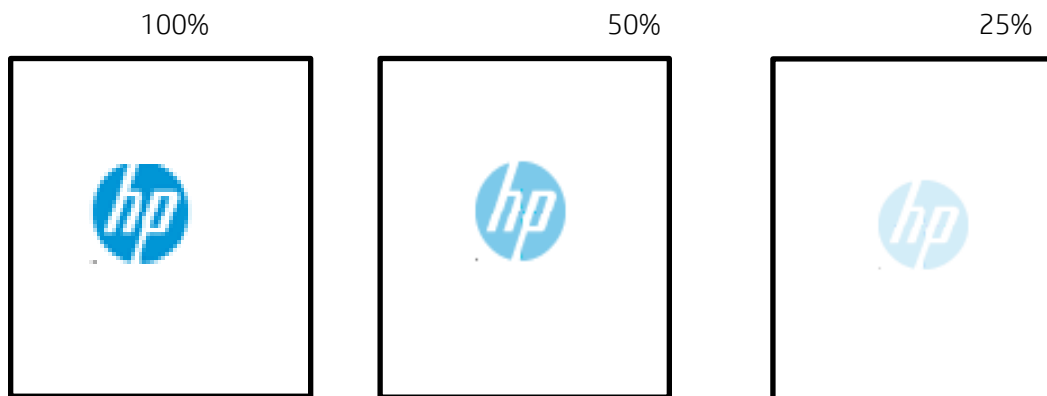
- Top Left
- Top Middle
- Top Right
- Bottom Left
- Bottom Middle
- Bottom Right
- Center
- Center Left
- Center Right



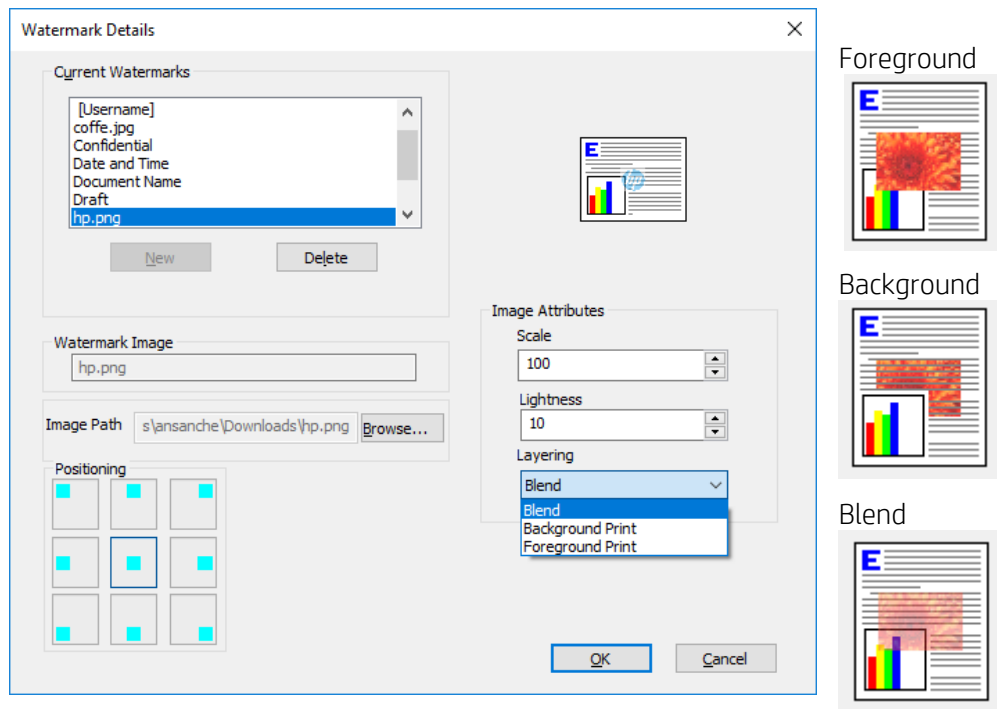
- Scaling: This option allows to scale in or out the watermark by selecting the appropriate value. The valid range is 10-999.

NOTE: Due to scaling in or out image watermark clipping may happen.

- Lightness: This option allows the user to change the level of transparency for the watermark. The valid range is 0-100. Default values is 10.



- Layering: This option allows the user to place the watermark in background, foreground or blend it to images/text on the page. The default option is **Blend**.

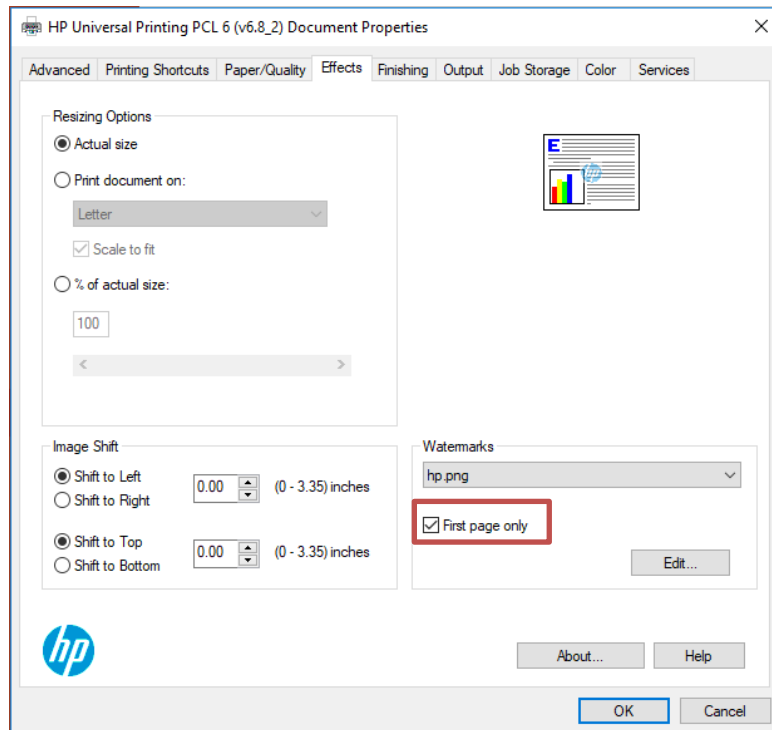


Use other settings in the printer driver to print the image watermarks

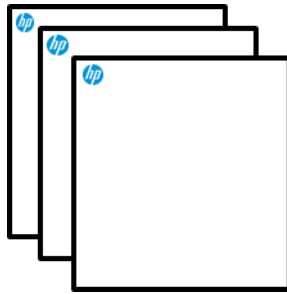
Image watermarks will be printed according to other settings selected in the printer driver.

- First page only

When this check box is selected, the image watermark is printed only on the first page of the document.



NOTE: To print the image watermark on all pages of the document, the user should clear or uncheck this check box.



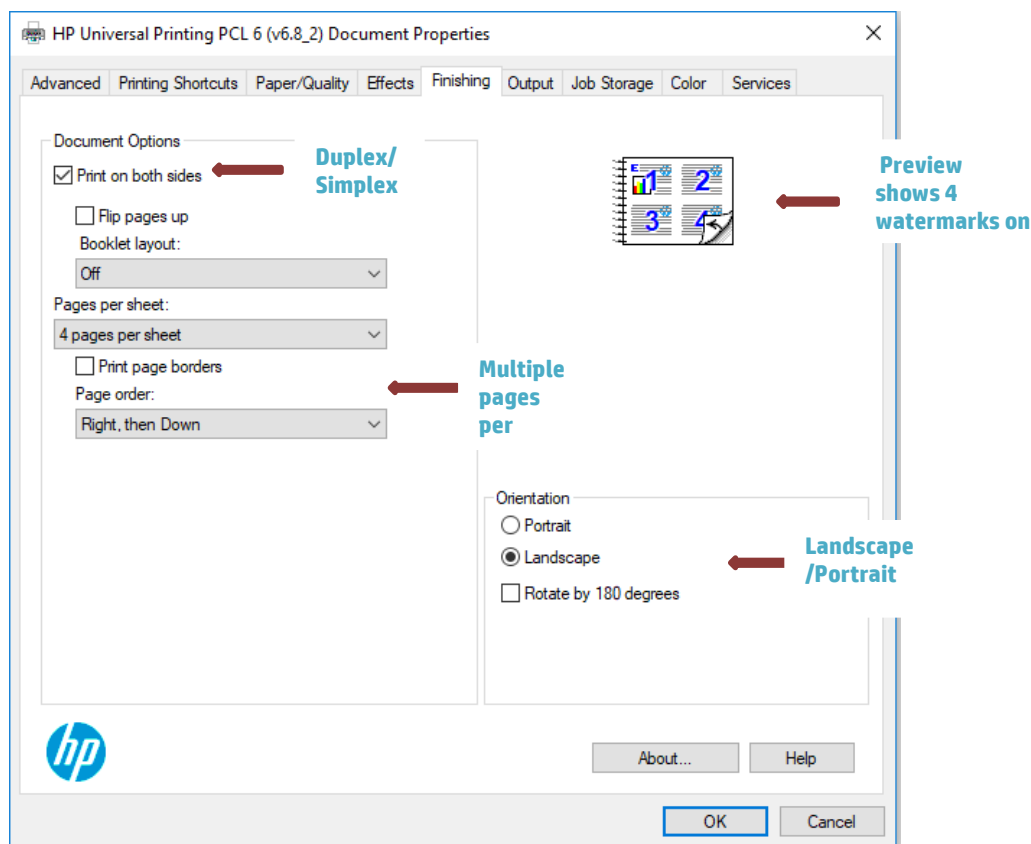
- Multiple pages per sheet/ Duplex/Orientation

Image watermark are applied to logical pages.

When the user selects a multiple page document , orientation and duplex, the image watermark appears according to the positioning and other settings selected.

For example, when Pages per sheet is set to “4” on a 4-page document, four watermarks appear on the physical page (one on each logical page).

Changes on both sides or orientation will have effect on the image watermark as well.

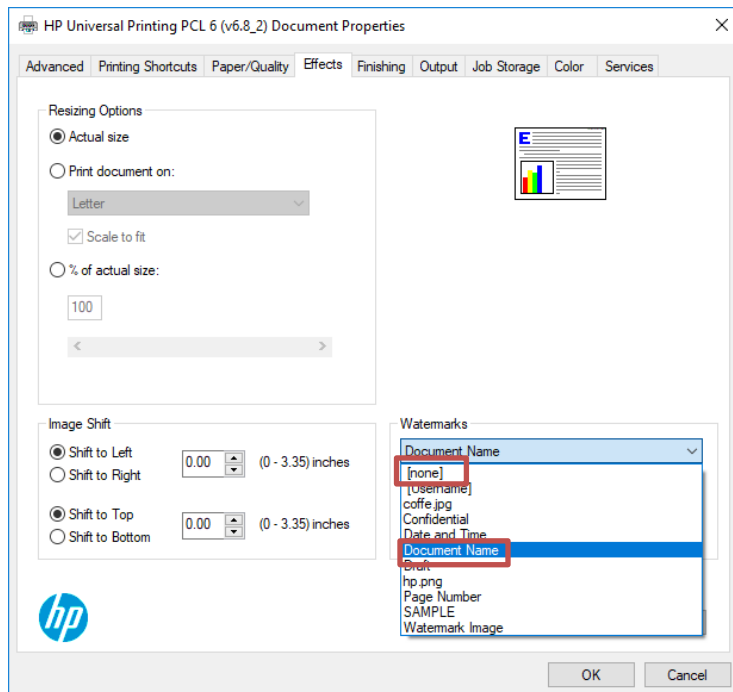


- Different paper size

Image watermark can be printed on all supported paper sizes.

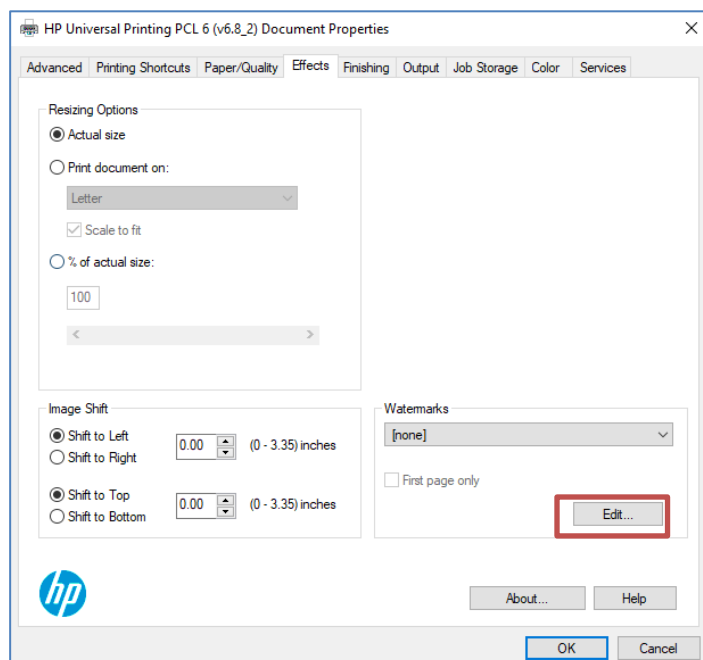
Selecting a previously used image file

When an image watermark is added, the user can select it for future use on the main **Watermarks** drop-down menu. All watermarks available are listed in alphabetical order (including image watermarks).

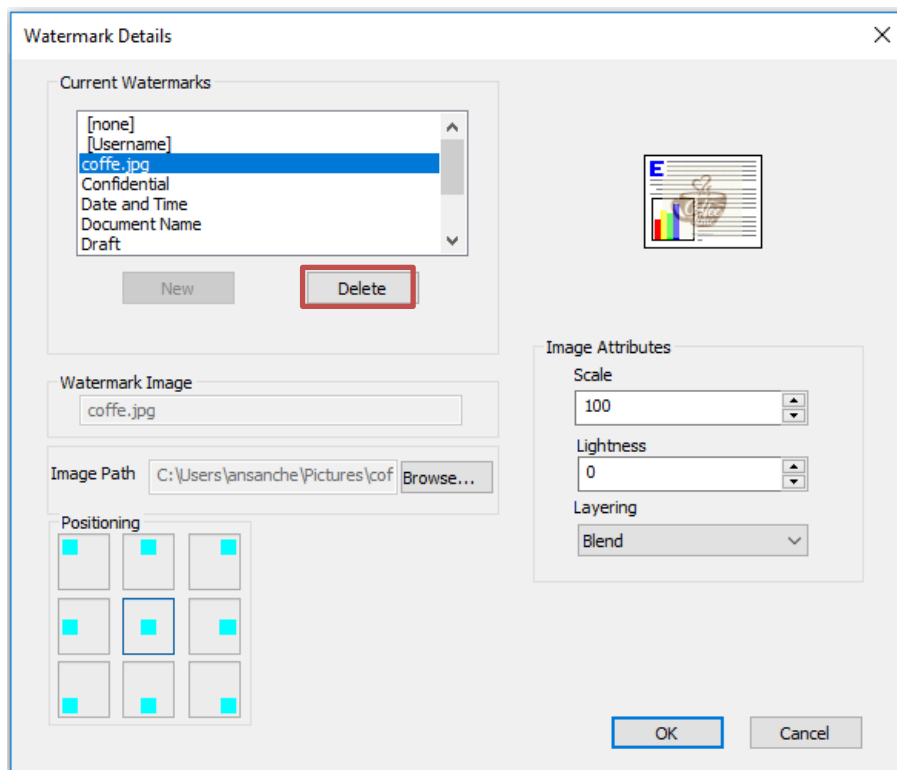


Deleting an image watermark

For deleting an image watermark from the **Watermarks** drop-down menu, the user should select **Edit** button to access **Watermarks details** page.



The user should select the image file that will be removed, and then click the **Delete** button.



Pre-Configuration

Image watermarks can be pre-configured using the Driver Configuration Utility on the HP Print Administrator Resource Kit (PARK) tools.

hp.com/go/support

**Current HP driver, support, and security alerts
delivered directly to your desktop**

© Copyright 2019 HP Development Company, L.P. The information contained herein is subject to change without notice. The only warranties for HP products and services are set forth in the express warranty statements accompanying such products and services. Nothing herein should be construed as constituting an additional warranty. HP shall not be liable for technical or editorial errors or omissions contained herein.

Trademark acknowledgments, if needed.

Doc: c06380666, Created on June 2019

