



## Health Technology

The different devices are thoroughly evaluated by action medeor and selected after criteria such as quality, application type with unfavorable environmental conditions, user friendliness, communication with the manufacturers, procurement price, and operating cost.

- Laboratory equipment: hematology analyzer, auto chemistry analyzer, Hb, CD4, glucometer
- Imaging: digital X-ray, CT, MRT, ultrasound
- Intensive care unit / ICU: monitor, ECG, pulse oximeter
- Dental: mobile dental unit, dental chair
- Operating room and equipment: anesthesia, operating tables suction, oxygen concentrator
- Hospital technology: central sterilization, oxygen, industrial washing machine



## Glucometer Medisign MM1000

Code free, reliable and safe monitoring of blood glucose level in diabetes.

# Glucometer Medisign MM1000

## Blood Glucose Monitoring System

- Continuously high measuring accuracy thanks to automatic double measurement
- Extra short measuring time (5 secs.)
- Memory of 500 measuring values
- Large illuminated display for easy reading of measurement values
- Auto calibration, no coding required
- With active sensor test strips
- CE marked
- Battery-operated\*

## Test strips

- 50 sensor test strips
- Storage: 4°C - 24°C
- Max. shelf-life 24 months
- CE marked

## Available in two different units of measure:

- mmol/L
- mg/dl

## Accessories:

- 10 sensor test strips
- Soft lancet device, soft lancets
- User manual
- Soft bag



Test strips



## Glycohemoglobin Analyzer HbA1c BioHermes A1C EZ 2.0

Easy and accurate portable testing of long-term blood glucose level HbA1c, for better diabetes monitoring in hospitals and at home.

# Glycohemoglobin Analyzer HbA1c

## Convenient

- Only one drop (~ 3 microliter) of fingertip blood needed
- Easy to operate in three steps
- Voice prompt during the measuring process
- Handheld, battery-driven, portable
- Automatic storage of 1,000 test results with corresponding test time and date
- Mini USB interface for easy data transfer

## Fast

- No calibration required
- Test results within 5 minutes
- No preheating needed before testing

## Precise

- Accurate results with CV <3%
- NGSP and IFCC double certificates, CE certified

## Results displayed as:

- % HbA1c (DCCT - preset) or mmol/mol (IFCC)
- Additional display of eAG in mmol/L

## Accessories:

- 4 AAA Batteries
- User manual, operation guide, cleaning and maintenance guide

## Kit de test:

- 25 Test strips
- Buffer A | Buffer B
- 25 Blood sampler
- Code chip (for matching the analyzer with the test strips)

Test Kit



Immediate feedback  
in only 5 minutes





## Fingertip Pulse Oximeter FS20D

Small and handy device for spot-check or continuous short-term monitoring applications during mobile use (in rescue and emergency situations and in remote areas), in hospitals, and at home.

# Fingertip Pulse Oximeter FS20D

## Functionality:

- Reliable and accurate pulse oximetry measurement
- Precise readings even during motion and on patients with poor circulation and darker skin tones
- Simple operation, real-time spot-checks
- High brightness OLED screen display (PR, SpO2, bar graph, synchronous waveform, heart beat mark and pulse beep) with four directions for easy reading
- Alarm function
- Energy efficient thanks to automatic power-off, battery-low indicator
- Compact, lightweight design with silicon cover for extra protection

## Specifications:

- Low perfusion performance: correct detection when PI > 0.3%
- SpO2 range: 70-100%,  $\pm 2\%$
- Pulse rate range: 25-250 BPM,  $\pm 2\%$
- Operation temperature: 5°C - 40°C
- Dimensions: 58 (H) x 33 (W) x 35 (D) mm
- Net weight: 100g
- Warranty: 36 months
- CE and FDA approved

## Accessories:

- Rubber cover
- Carrying strap
- User manual
- 2 AAA Batteries\*



Alarm function alerts of decreasing values!



## Patient Monitor CMS7000

The Patient Monitor CMS7000 is for continuous monitoring of physiological and vital functions of a patient. It is used for intensive care units, heart medicine, operating theatre, emergency room and hospital in-patient monitoring.

With multi parameter monitoring like ECG, HR, RESP, SpO2, PR, NIBP, TEMP, etc. it is suitable for patients in a critical clinical situation and for diagnosis. The Patient Monitor integrates parameter measurement module, display and recorder in one device to form a compact and portable equipment. At the same time, its built-in rechargeable battery provides convenience for patient moving.

It has abundant functions, such as audible and visual alarm, trend data storage and output, alarm event marking and drug concentration calculation. The device has an inbuilt thermo-printer for printouts. The target persons are adult, pediatric and neonate patients.



## Standard parameters:

- Electrocardiograph (ECG) with heart rate (HR) and ECG waveform. The ECG wave form can be monitored either by 3- or 5-lead (1 package with 20 electrodes for adults included)
- Respiration (RESP) with respiration rate (RR) and respiration waveform
- Pulse oxygen saturation (SpO2) with plethysmogram (PLETH) and pulse rate (PR) (1 SpO2 probe for adults included)
- Non-invasive blood pressure (NIBP) with systolic blood pressure (SYS) and diastolic blood pressure (DIA) (1 NIBP cuff and one extension tube for adults included)
- Temperature (TEMP) with dual-channel TEMP T1 and T2 (one temperature probe included)

## Additional functions on request:

- Carbon dioxide (CO2) (optional) with end-tidal carbon dioxide (EtCO2) and airway respiratory rate (AwRR)
- Invasive blood pressure (IBP) (optional): With two channels (CH) also showing waveform
- ECG 12-lead

## Technical features:

- 12.1" TFT LCD monitor
- Multilanguage interface with English, France, Spanish, German, Turkish, Portuguese, Italian, Dutch and more
- Selectable interface presentation like trend chart, big characters, up to 8 wave forms etc.
- Fanless which makes it quiet and reduces cross contamination
- Drug concentration calculation and titration table functions
- Connect to central monitoring system by 3G, WiFi or wired mode
- Defibrillation proof (special leads are needed)
- Build in printer with adjustable printing speed
- Build in rechargeable lithium ion battery for uninterrupted monitoring and bed movement of the patient
- Dimensions: 319 mm (L) x 161 mm (W) x 269 mm (H)
- Weight: less than 3 kg (without accessories)

## Environmental working conditions:

- Ambient temperature: 5 °C ~ 40 °C
- Humidity: 15 % to 85 % (non-condensing)
- Atmospheric pressure: 700 hPa to 1060 hPa



Pictures: © Contec Medical Systems

### ECG electrodes (disposable):

- ECG electrodes, adult, one packet (20 pcs)
- ECG electrodes, child, one packet (20 pcs)

### ECG cable (reusable):

- 5-lead, American Standard, TPU, gold-plated button-type
- 5-lead, European Standard, TPU, gold-plated button-type
- 5-lead, American Standard, TPU, children's gold-plated, clip-type
- 5-lead, European Standard, TPU, children's gold-plated, clip-type

### SpO2 probe (reusable):

- Digital fingertip SpO2 probe for adult (>40 kg), CMS-N-SPO2 6P, 3m, yellow
- Digital fingerstall SpO2 probe for adult (>40 kg), CMS-N-SPO2 6P, 3m, yellow
- Digital fingertip SpO2 probe for children (10-40 kg), CMS-N-SPO2 6P, 3m, yellow
- Digital integrated SpO2 probe for adult or children (>10 kg), CMS-N-SPO2 6P, 3m, yellow

### NIBP airway tube (reusable):

- NIBP extension tube, L = 3 m (direct-plug connector and fast connector (female))

### NIBP cuff (reusable):

- Neonatal cuff, limb perimeter 6-11 cm
- Infants cuff, limb perimeter 10-19 cm
- Children cuff, limb perimeter 18-26 cm
- Adult cuff, limb perimeter 25-35 cm
- Adult cuff, large size, limb perimeter 33-47 cm
- Leg cuff for adult, limb perimeter 46-66 cm

### TEMP probe (reusable):

- R25=2.252K temperature probe, body surface type, CMS-N-TEMP 2P, PVC, L = 3 m
- R25=2.252K temperature probe, body cavity type, CMS-N-TEMP 2P, PVC, L = 3 m



## Oxygen Concentrators

action medeor's medical oxygen concentrators provide concentrated oxygen to patients during treatment. They are self-contained devices based on the molecular sieve (artificial zeolite) method to separate nitrogen from air and extract oxygen.

Oxygen concentrators are a suitable and favorable option for administering health centers and hospitals, especially where cylinders and piped systems are inappropriate or unavailable. We provide different types of oxygen concentrators according to our partners needs.

All our devices are equipped with an LCD display showing switch times, operating pressure, present working time and accumulated working time. Additionally, the device is equipped with different types of alarms for power failure, high & low pressure, low oxygen purity and oxygen flow.

## Oxygen Concentrators



**Unit JAY-5**

The oxygen concentrator **JAY-5** can provide an output of 5 liter per minute. With its one oxygen outlet, it is best suited for single patient care but is also capable of providing oxygen to multiple patients according to their needs.

Flow rate	0 - 5 LPM
Purity	93 (±3%)
Outlet pressure	0.04 - 0.07 MPA
Power consumption	550 W
Sound level	≤ 50 dbA
Net weight	26 kg
Size (mm)	365 x 375 x 600



**Unit JAY-5BW**

The unit **JAY-5BW**, like the JAY-5, has an oxygen output of up to 5 liter per minute. With its lower net weight, size and noise level, it is most suited for the homecare of a single patient. This unit has also a lower power consumption.

Flow rate	0 - 5 LPM
Purity	93 (±3%)
Outlet pressure	0.04 - 0.07 MPA
Power consumption	350 W
Sound level	≤ 45 dbA
Net weight	18 kg
Size (mm)	360 x 300 x 600



**Unit JAY-8**

The oxygen concentrator **JAY-8** can provide an oxygen flow of 8 liter per minute. Because of this high flow rate, this unit is easily capable of supplying multiple patients with oxygen at the same time but on a low power consumption. This unit is equipped with one oxygen outlet.

Flow rate	0 - 8 LPM
Purity	93 (±3%)
Outlet pressure	0.04 - 0.07 MPA
Power consumption	550 W
Sound level	≤ 50 dbA
Net weight	26 kg
Size (mm)	365 x 375 x 600



**Unit JAY-10**

The oxygen concentrator **JAY-10** is equipped with a powerful oil-free compressor, supplying up to 10 liter per minute of oxygen to patients. It is therefore perfectly suited to the supply of multiple patients. Additionally, the device has a supporting "cooling" technology to improve its reliability and lifetime.

Flow rate	0 - 10 LPM
Purity	93 (±3%)
Outlet pressure	0.04 - 0.07 MPA
Power consumption	880 W
Sound level	≤ 52 dbA
Net weight	27 kg
Size (mm)	365 x 375 x 600

Having a reliable oxygen supply is necessary for the care of seriously ill patients to improve the probability of survival. It is important to ensure that potentially life-saving oxygen equipment is available and included in health facilities. All our medical oxygen concentrators have a broad environmental operation spectrum. Optional functions are available on demand, including different kinds of alarms, a nebulizer or a pulse oximeter.



## Portable digital ultrasound diagnostic system

This small and easy to use portable digital ultrasound diagnostic system CU30 is for a variety of clinical applications. With a powerful measurement and calculation software, excellent images can be obtained.

### Advanced digital technology

- Digital beam-forming
- Tissue harmonic imaging for better resolution
- Dynamic receiving focusing
- Dynamic frequency scanning
- Real-time dynamic aperture
- Smart speckle reduction imaging (SSR)

### Professional ultrasound diagnostic tools

- Twins fetus measurement
- Fetal growth curve
- Biophysical profile score system
- Embedded professional report format and report templates
- Biopsy guide & lithotripsy guide
- 3D imaging

# Portable digital ultrasound diagnostic system

## Extensive ultrasound scanning function

- Large capacity for cine loop, patient information & image storage
- Multiple image & video save format
- Simple one-button operation workflow
- Wide selection of preset exam modes & parameters for optimized clinical image

## Technical features

- Black and white (B-Mode System)
- 12 inch high resolution LED monitor
- Rechargeable battery
- Two transducer connections
- 16 channels
- More than 10 GB storage
- Good connectivity: USB, Video, VGA, HDMI, DICOM 3.0 standard port (optional)
- Power: AC 200 V ~ 240 V 50 HZ  $\pm$  5%
- Volume: 450 x 440 x 36 mm
- Gross weight: 10 Kg
- Net weight: 5.5 Kg

## Extra Accessories

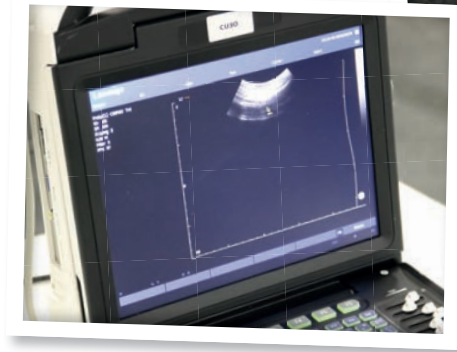
- Convex array transducer
- Linear array transducer
- Trans-vaginal transducer
- Micro-convex array transducer
- Sony printer

## Clinical applications

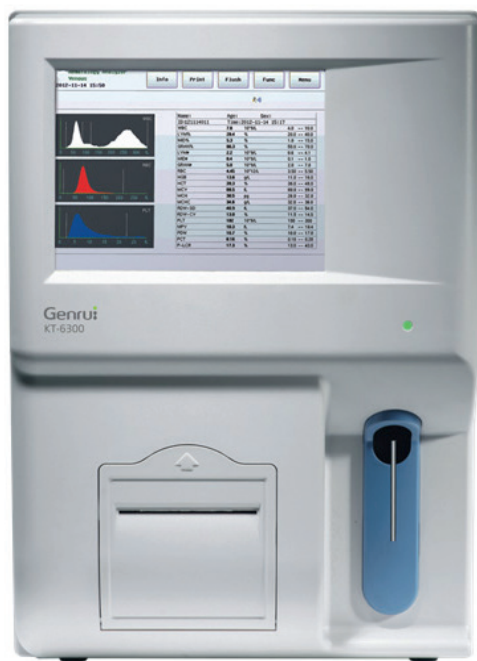
- Gynecology
- Obstetrics
- Urology
- Abdominal
- Cardiology
- Orthopedic surgery
- Small parts

## Environmental working conditions

- Ambient temperature: 5 °C ~ 40 °C
- Humidity: 35 % to 85 % (non-condensing)
- Atmospheric pressure: 700 hPa to 1060 hPa



Pictures: © action medeor



## Automated Hematology Analyzers

### 3-Diff Automated Hematology Analyzer KT-6300

The 3-diff automated hematology analyzer is ideal for small and medium sized labs and robust operating conditions. It has a convincing powerful data management and is very user friendly with its touch screen and built-in thermal printer.

### 5-Diff Automated Hematology Analyzer KT-6610

A compact and user friendly 5-diff auto hematology analyzer. More accurate counting through tri-angle laser scattering and flow cytometry. The bench-top analyzer can be used as standalone or can be connected to Laboratory Information Systems. A built-in barcode scanner simplifies the automatic patient data input and management of reagents.

## Automated Hematology Analyzers



KT-6610

### Complete function

- Test method: Tri-angle laser scattering, flow cytometry, impedance for cell counting and cyanide-free method for HGB
- Throughput: 60 tests / hour
- Sample: Venous, capillary, pre-diluted blood
- Sample volume: 20  $\mu$ L CBC + DIFF, 12  $\mu$ L CBC, 20  $\mu$ L / 224  $\mu$ L pre-diluted
- Result storage: 60,000 sample results with scattergrams and histograms

### Reporting parameters:

29 parameters, 2 histograms, 4 scattergrams:

WBC, BAS#, BAS%, NEUT#, NEUT%, EOS#, EOS%, LYM#, LYM%, MON#, MON%, ALY#, ALY%, LIC#, LIC%, RBC, HGB, MCV, MCH, MCHC, RDW-CV, RDW-SD, HCT, PLT, MPV, PDW, PCT, P-LCC, P-LCR, RED-hist., PLT-hist., Diff scattergrams, WBC scattergrams



KT-6300

### Complete function

- Test method: Impedance for cell counting and cyanide-free method for HGB
- Throughput: 60 tests / hour
- Sample: Venous, capillary, pre-diluted blood
- Sample volume: Venous blood 10 $\mu$ l, Capillary blood 10 $\mu$ l, pre-diluted blood 20 $\mu$ l
- Stockage des résultats: 100,000 résultats d'échantillons avec histogrammes

### Reporting parameters:

20 parameters and 3 histograms:  
WBC, LYM#, MID#, NEUT#, LYM%, MID%, NEUT%, RBC, HGB, HCT, MCV, MCH, MCHC, RDW-SD, RDW-CV, PLT, MPV, PDW, PCT, P-LCR, WBC- hist., RBC-hist., PLT-hist.

### Operating Conditions

- Temperature: 10°-30° C
- Relative humidity:  $\leq$  85 %
- Atmospheric pressure: 70 kPa-106 kPa

### Technical specifications

- Power supply: AC 100-240 V~, 50/60 Hz
- Dimensions: 43 (l) x 35 (w) x 43.5 (h) cm
- Weight: Net weight 28 kg
- Language: English. Other languages like French, Portuguese, Spanish are customizable
- Screen: 10.4-inch color touch screen
- Printer: Built-in thermal printer, supports external printer
- Interface: 4 USB ports, 1 LAN, HL7 protocol, supports LIS
- Bar code reader: yes
- Open / closed system: Closed system

### Operating Conditions

- Temperature: 18°-35° C
- Relative humidity: 10 % - 90 %
- Atmospheric pressure: 70 kPa-106 kPa

### Technical specifications

- Power supply: AC 100-240 V~, 50/60 Hz, auto adapt according to the input voltage
- Dimension: 41 (l) x 43.5 (w) x 47.2 (h) cm
- Weight: Net weight 21 kg
- Language: English. Other languages like French, Portuguese, Spanish are customizable
- Screen: 8-inch color touch screen
- Printer: Built-in thermal printer
- Interface: RS232/C serial port, VGA interface, 2 USB ports
- Bar code reader: Optional
- Open / closed system: Both possible





## Auto Chemistry Analyzer GS100

This device enables the photometric determination of clinical chemistry parameters from samples of serum, plasma, urine and cerebrospinal fluid. GS100 is the smallest and most integrated chemistry analyzer, which is perfect for low volume laboratories. The in vitro diagnostic device is programmable and needs respective reagents

### Easy to operate

- Up to 120 tests per hour
- Fast start-up and shut-down process
- User-friendly software
- Auto cuvette washing
- Open or closed system

# Auto Chemistry Analyzer GS100

## Integrated technology

- Built-in computer!
- Built-in thermal printer
- Complete solution

## Economical solutions

- Minimal bench space needed
- Minimum reaction volume
- Reusable cuvettes
- Low water consumption
- Low energy consumption



## Technical specifications

- Test method: Photometric colorimetry
- Assay method: Endpoint, kinetic, 2-point kinetic, dual wavelengths
- Wavelengths:  
8 (340, 405, 450, 510, 546, 578, 630, 670 nm)
- Light source: 12 V, 20 W halogen tungsten lamp
- Screen: 10.4 inch LCD touch screen
- Reagent tray: 54 reagent positions
- Sample tray: 27 sample positions
- Reaction tray: 81 reusable cuvettes, auto cuvette wash
- Water consumption:  $\leq 1$  L/h
- Throughput: Up to 120 tests per hour
- Carryover:  $\leq 0.5$  %
- Absorbance range: 0 – 4.5 Abs.
- Reaction temperature:  $37^{\circ}\text{C} \pm 0.1^{\circ}\text{C}$
- Result storage: 122 programmable assays,  $\geq 100,000$  test results
- Printer: Integrated thermal printer, connectivity to external printer possible
- Connectivity: Ethernet, USB, RS-232, VGA, HDMI, audio, etc.
- Power supply: AC 100 – 240 V; 50/60 Hz, 150 VA
- Environmental temperature / Relative humidity:  $10^{\circ}\text{C} - 30^{\circ}\text{C} / 30 - 85$  %
- Atmosphere pressure: 70 kPa – 106 kPa
- Altitude : En-dessous de 3000 m
- Dimensions:  
605 mm (L) x 350 mm (W) x 350 mm (H)
- Weight: Net weight 25 kg



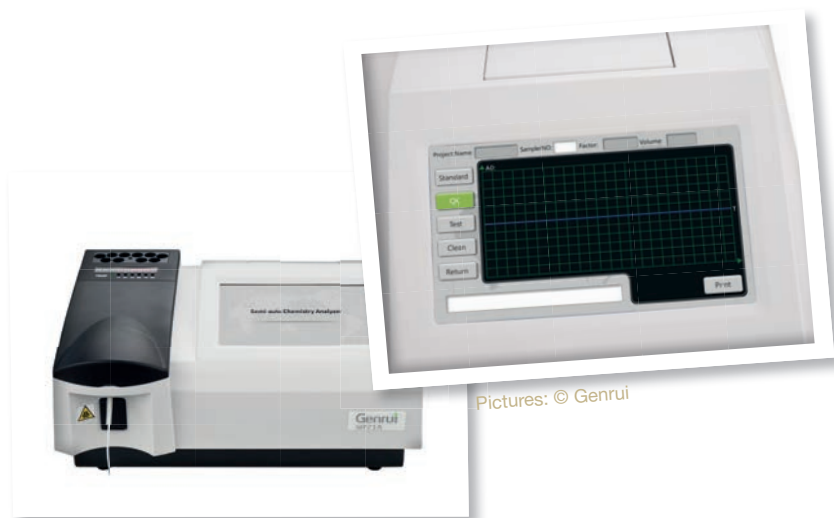
## Semi-auto Chemistry Analyzer WP21A

This device enables the photometric determination of clinical chemistry parameters from samples of serum, plasma, urine and cerebrospinal fluid. It is ideal for health centers, clinics and small hospitals with low number of test per day. The in vitro diagnostic device is programmable and needs respective reagents.

# Semi-auto Chemistry Analyzer WP21A

## Functionality

- Real-time display of the reaction curve
- Flow cell and cuvette mode
- Open and closed system both possible
- Built-in incubators and timers



## Technical specifications

- Test method: Photometric colorimetry
- Assay method: Endpoint, kinetic, 2-point kinetic, dual wavelengths
- Wavelengths: 7 (340, 405, 492, 510, 546, 578, 630 nm)
- Light source: 6 V/10 W long-life halogen lamp with auto sleep function
- Screen: 7-inch LCD touch screen
- Sample volume: 500 - 3000  $\mu$ L adjustable
- Carryover:  $\leq 1.0$  %
- Absorbance range: 0 – 4.5 Abs.
- Temperature: Usually 37°C, the range is 25 - 40°C.
- Pre-incubation positions: 10 incubators and three timers
- Result storage: 122 programmable assays,  $\geq 10,000$  test results
- Connectivity: RS-232 standard interface
- Printer: Integrated thermal printer, connectivity to external printer possible
- Power supply: AC 100 – 240 V; 50/60 Hz, 100 VA
- Environmental temperature / Relative humidity: 10°C – 30°C /  $\leq 80$  %
- Atmosphere pressure: 70 kPa – 106 kPa
- Dimensions: 340mm (L) x 270mm (W) x 185mm (H)
- Weight: Net weight 5 kg, gross weight 7.5 kg



## Genrui Reagents for Chemistry Analyzers

To achieve the best medical treatment, it is of high value to get a diagnostic clinical picture of the patient. For Genrui chemistry analyzers, the most common clinical chemistry endpoints for diseases of the liver, the kidney, the heart the lipid and sugar metabolism are available.

## GENRUI REAGENTS

Abbreviation	Reagent	Method	mL / test kit	Max tests / kit	Panel
ALB	Albumin	BCG Colorimetric	150	500	Hepatic
ALP	Alkaline Phosphatase	IFCC Kinetic	150	500	Hepatic
ALT	Alanin Aminotransferase	IFCC Kinetic	150	600	Hepatic
AMY	a-Amylase	IFCC Kinetic	75	250	Pancreatic
AST	Aspartate Amino-transferase	IFCC Kinetic	150	600	Hepatic
CHE	Cholinesterase	Kinetic	75	250	Hepatic
CHOL	Total Cholesterol	COD-PAP	150	500	Lipid
CK-MB	Creatine Kinase Iso-enzyme	Immunity Repression	150	500	Cardiac
CO2	Carbon Dioxide	Enzymatic	90	300	Renal
CREA (OX)	Creatinine	Sarcosine Oxidase	80	250	Renal
D-BIL	Direct Bilirubin	Vanadate Oxidation	150	536	Hepatic
GGT	y-Glutamyl Trans-ferase	IFCC Kinetic	150	600	Hepatic
GLU (HK)	Glucose	Hexokinase	150	500	Diabetes
GLU (OX)	Glucose	Glucose Oxidase	150	500	Diabetes
HCY	Homocysteine	Enzymatic Cycling	75	250	Cardiac
HDL-C	HDL-Cholesterol	Select Inhibition	80	286	Lipid
LDH	Lactate Dehydrogenase	L-P Kinetic Method	150	500	Cardiac
LDL-C	LDL-Cholesterol	Direct Method	80	286	Lipid
T-BIL	Total Bilirubin	Vanadate Oxidation	150	536	Hepatic
TG	Triglyceride	GPO-PAP	150	500	Lipid
TP	Total Protein	Biuret Colorimetric	150	500	Hepatic
UA	Uric Acid	Uricase-Peroxidase Coupling	150	500	Renal
UREA	Urea	Enzyme-coupling Kinetic	150	500	Renal

Other test kit sizes are available on request. After manufacturing, the reagents are stable for 12 months under 2-8°C without sunshine; once opened, the reagent are stable for 30 days if kept in 2-8°C without sunshine. The reagents can be used for all types of Genrui chemistry analyzers. Further chemistry analyzers from other manufactures (e.g. OLYMPUS 2700, Hitachi 7600, Mindray BS200) can also use the Genrui reagents, if the analyzers are run as open systems.



Pictures: © Genrui



## Hemoglobin Analyzer DiaSpect Tm

Immediate hemoglobin results from a hand-held analyzer. Fast, easy to use and reliable in all climate conditions.

- Results in just about 2 seconds
- Reagent-free microcuvettes
- 40 days or 10,000 tests continuous use
- 2½ years cuvette shelf life

# Hemoglobin Analyzer DiaSpect Tm

## Easy to use

- ‚Always-on‘ technology, ready for use immediately
- Results in just about 2 seconds
- Automatic self-check between each measurement
- Symbol-based display
- Factory calibrated with permanent calibration

## Accurate and reliable

- Measuring range: 0 - 25.5 g/dL
- Imprecision (within run): CV <1 %
- Photometric method with broad spectrum and compensation for turbidity and scattering
- Operating ambient temperature 10 °C to 42 °C
- Calibrated against HiCN reference method according to ICSH

## Practical and portable

- Maintenance free
- Capillary, venous or arterial blood (EDTA and Heparin anticoagulant can be used)
- Compact: 150 (d) x 90 (w) x 40mm (h)
- Lightweight: 180 g
- Integrated rechargeable battery (40 days or 10,000 tests continuous use)
- Connect to PC via USB 2.0 or Bluetooth (optional)

## Reagent-free microcuvettes

- Sample volume <10 µL
- Shelf life of up to 2.5 years, even after the bag has been opened
- Microcuvettes unaffected by humidity or temperature and can be used until expiration date after opening the bag
- Storage temperature: 0 °C - 50 °C (- 30 °C - 70 °C up to 24 hours)
- Easy to pick up and handle with gloves
- CE marked
- Manufactured in Germany







## Dental treatment in the field

The mobile dental unit makes dental treatment possible in a variety of places, providing the basis for an inexpensive dental practice. Our product range is completed by fitting instruments, a suction pump, a set for tooth extraction, dental burs, and more.

## Dental treatment in the field

### MOBILE DENTAL UNIT

Weighing 28 / 30.5 kg and housed in a solid portable suitcase, the mobile dental unit can be carried easily. To operate, the unit just requires electrical power. An integrated oil-free air compressor provides the compressed air for operating the dental instruments. Bottles for fresh and waste water are included.

### Components

#### Turbine socket:

High-speed, driven by compressed air and water cooled, foot controlled

#### Air motor socket:

Low-speed for air motor driving handpiece or contra angle handpiece, foot controlled

#### Saliva ejector:

Suction residues are collected in a waste water bottle

#### Scaler:

Ultrasonic scaler, controlled by foot

#### Curing light:

LED polymerization lamp for light curing dental composites

#### 3-way-syringe:

Spray system for air and water

#### Water supply:

Integrated 1 liter bottle for water supply

#### Compressor:

Integrated oil-free compressor with an air tank for the supply of compressed air

#### Foot control:

One foot control pad for controlling the high- and low-speed instruments and one foot control pad for the scaler and the saliva ejector



## Dental treatment in the field

### TWO MODELS AVAILABLE

To give you more flexibility in terms of price, weight and technical features, action medeor provides two different models of mobile dental units:



Model DU 893

#### Mobile Dental Unit

This unit is the base model and includes all the essential features necessary to the dental treatment in the field while weighing only 28 kg.

#### Technical data

Power Supply: ~ 230V / 60Hz

Dimensions: 45 x 31 x 68 cm

Weight: 28 kg

Power: 550 W

Noise level: ≤60 db

Compressed air tank: 5 L

Airflow: 40 L/min

This mobile dental unit is CE certified.



Model DU 852

#### Mobile Dental Unit Plus

The unit comes with additional features for a more convenient dental treatment in the field:

- additional saliva ejector (choice between strong or weak suction)
- more powerful with 750 W
- higher airflow of 50 L/min
- combined foot control pad for scaler, suction and instruments

#### Technical data

Power Supply: ~ 230V / 60Hz

Dimensions: 45 x 31 x 68 cm

Weight: 30.5 kg

Power: 750 W

Airflow: 50 L/min

This mobile dental unit is CE certified.

## Dental treatment in the field

### INSTRUMENTS

For its usage, the mobile dental unit requires burs and instruments which are not included in the base device. Here is the assortment of instruments provided by action medeor:

#### Low-Speed Contra Angle with Hand Piece D06\*



#### Features

- Push button contra angle
- External water spray
- Small head, cartridge compatible with NSK
- Easy to clean thanks to the high-quality cartridge
- 1:1 ratio

#### Technical data

Air pressure: 0.3 Mpa.  
 Rotation speed: ≈ 20,000 rpm  
 Chuck type: Push button

Noise level: ≤ 70 dB  
 Applicable Bur: 2.35 mm (ISO1797-1)

#### High-Speed Turbine with LED



#### Features

- Standard push cartridge
- Stable, low noise, fast, operation with low vibration
- Three-way spray, highly efficient cooling system
- Self-illumination without connecting circuit
- Professional LED light source, superior brightness with a longevity of 10,000 hours

#### Technical data

Light: LED bulb  
 Air pressure: 0.25-0.27 Mpa  
 Holes: 4  
 Rotation speed: ≥ 300,000 rpm

Chuck type: Push button  
 Noise level: ≤ 68 dB  
 Spray: Three-way spray  
 Applicable bur: 1.59mm ~ 1.6mm ×  
 21mm ~ 23mm ø×l

#### D16-M4 External Air Motor



#### Features

- European Style design
- Special, wear-resistig stainless steel with special finish
- E-type connector

#### Technical data

Air pressure: 0.3 Mpa  
 Holes: 4  
 Rotation speed: ≈20,000 rpm

Noise level: ≤ 70 dB  
 Spray: External water channel

# Dental treatment in the field

## INSTRUMENTS



### D17-M4 Inner Channel Air Motor

#### Features

- Back plate made of stainless steel
- E-type connector

Air pressure: 0.3 Mpa.  
 Rotation speed:  $\approx 20,000$  rpm  
 Holes: 4

Noise level:  $\leq 70$  dB  
 Spray: Inner water channel



### Handpiece D06-B4-1 Contra Angle For Implant

Chuck type: Wrench  
 Reduction: 4:1  
 Spray: External water spray  
 Air pressure: 0.3 Mpa

Rotation speed: 5,000 rpm  
 Noise level:  $\leq 70$  dB  
 Bur application: 2.35mm



### Straight Head D27-S Inner Channel

Air pressure: 0.3 Mpa  
 Rotation speed:  $\approx 20,000$  rpm  
 Chuck type: Wrench  
 Bur applicable: 2.35mm

Noise level:  $\leq 50$  dB  
 Spray: Inner water channel  
 Ratio: 1:1



### Straight Head D16-S External Channel

Air pressure: 0.3 Mpa  
 Rotation speed:  $\approx 20,000$  rpm  
 Bur applicable: 2.35mm

Noise level:  $\leq 50$  dB  
 Spray: External water channel



### Straight Head D17-S Inner Channel

Air pressure: 0.3 Mpa  
 Rotation speed:  $\approx 20,000$  rpm  
 Chuck type: Push bottom  
 Bur applicable: 2.35mm

Noise level:  $\leq 50$  dB  
 Spray: Inner water channel  
 Ratio: 1:1

## Dental treatment in the field

### HANDPIECE SETS

action medeor provides handpiece sets for the mobile dental unit. There are two types of sets, one with an external water channel and one with an internal water channel.

#### Handpiece set with external water channel

Consisting of

- D16-M4 External Air Motor
- D16 External Straight Head
- Low-Speed Contra Angle D06

#### Handpiece set with inner water channel

Consisting of

- D17-M4 Inner Channel Air Motor
- D27-S Inner Channel Straight Handpiece
- Contra Angle Piece



## Dental treatment in the field

### OTHER ACCESSORIES

For optimum comfort and usability, here are additional helpful dental accessories:



#### Suction Unit Kataspir 20

A portable suction unit for the aspiration of body liquids. Adapted for oral, nasal and tracheal aspiration in adults or children. It also has a bacterial filter.

#### Technical data

Motor: Maintenance-free and oilless piston pump  
Free air flow rate: 16 L/min  
Max Vacuum: -0.75 bar

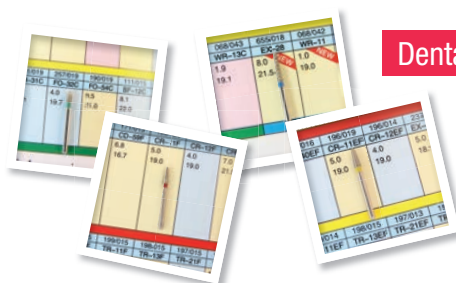
Noise level: 65 dB  
Power feeding: 230V - 50Hz  
Dimensions: 350 x 210 x 180 mm  
Weight: 2.5 kg



#### Tooth extraction instrument set

Set of instruments for the extraction of teeth, containing:

- Dental forceps Büchs engl. model #1
- Dental forceps engl. model #18A
- Dental forceps Büchs engl. model #13
- Dental forceps Büchs engl. model #72
- Dental forceps Büchs engl. model #33
- Seldin Root elevator, left
- Seldin Root elevator, right
- Langenbeck retractor 40 x 1 m, 21.5 cm
- Willinger bone elevator 5 mm, 16 cm
- Bein root elevator, round 3 mm
- Hemingway sharp spoon, 16.5 cm
- Tooth probe, octagonal handle
- Dental mirror, plane ø 22 mm
- Ward Modelling Instrument
- Mouth mirror, standard threats octagonal handle



#### Dental burs

Available on request.

## Additional products



Fetal doppler

A Doppler fetal monitor is a hand-held ultrasound transducer used to detect the fetal heartbeat for prenatal care. It provide an audible simulation of the heart beat.



Patient monitor

This device is use to observe vital signs of the patient over time. It continuously measures certain parameters such as the heart rate, the blood oxygen saturation, the temperature and the respiratory rate. It is also adapted for pediatric use.



Digital Radiography System

Digital radiography (DR) is an advanced form of x-ray inspection which produces a digital radiographic image instantly on a computer. This technique uses x-ray sensitive plates to capture data during patient examination, which is immediately transferred to a computer without the use of an intermediate cassette.

Further products are available on request.

We will be happy to help you find the best technical solution in line with your needs and expectations.

**For more information, please contact us. We remain at your service!**

action medeor e.V.  
German Medical Aid Organization

St. Töniser Str. 21  
47918 Tönisvorst | Germany  
Phone: +49 2156 9788 100  
info@medeor.de | [www.medeor.de/en](http://www.medeor.de/en)