

Features:

The **CAMCO RDM Series Index Drive** is ideal for rotary dial applications with features including:

- Large output Mounting Surface supported by 4-point contact bearing offering superior thrust and moment capacity
- Large Center Thru Hole
- Low Profile
- Complete, Motorized Drive Packages
- Optional Output Overload Clutch

Table of Contents

How to Order	40
80RDM	42
601RDM	44
902RDM	46
1100RDM	48
1305RDM	50
1800RDM	52

Dimensions and technical information are subject to change without notice.

RDM Series How to Order

Base Model Description

- 80RDM** w/ R180 reducer & 1/3 hp AC motor (220/440V)
- 601RDM** w/ R180 reducer & 1/3 hp AC motor (220/440V)
- 902RDM** w/ R225 reducer & 1 hp AC motor (220/440V)
- 1100RDM** w/ KH47 reducer & 1-1/2 hp AC motor (220/440V)
- 1305RDM** w/ 7300C reducer & 2 hp AC motor (220/440V)
- 1800RDM** w/ 7400C reducer & 3 hp AC motor (220/440V)

Control Description

- 1** 1 hp 120V 80RDM,601RDM & 902RDM only
- 2** 1 hp 240V 80RDM,601RDM & 902RDM only
- 3** 1 hp 440V 80RDM,601RDM & 902RDM only
- 4** 2 hp 240V 1100RDM & 1305RDM only
- 5** 2 hp 440V 1100RDM & 1305RDM only
- 6** 3 hp 240V 1800RDM only
- 7** 3 hp 440V 1800RDM only



Motion	Stops	Index Period
A	2	330
B	3	330
C	4	330
D	6	330
E	8	330
F	12	330
G	16	330

Index Mounting
(See Figure 3)

- 1**
- 2**
- 3**
- 4**
- 5**
- 6**

Reducer Ratio
1100RDM

	A	B	C	D	E	F	G
Ratio	15	20	25	30	40	50	60
Value	15.86	19.58	24.06	29.37	39.61	48.95	56.83

Reducer Mounting
(See Figure 4)

- | | |
|---|---|
| A | J |
| B | K |
| C | L |
| D | M |
| E | N |
| F | P |
| G | R |
| H | S |

Signal Switch
M Mechanical
D Double
P Proximity

Signal Switch Side
(See Figure 2)
R Reducer
S Shaft

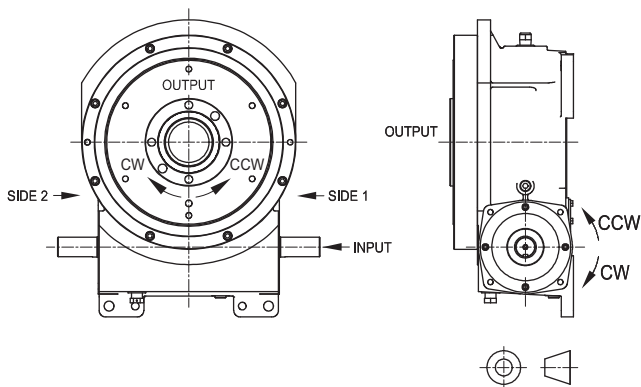
Example: MR, MS, DR, DS, PR or PS

Note about signal switch options:

- a) Mechanical is a single switch with cam.
- b) Proximity option is a mounting bracket for 8 or 12 mm proximity switch. A proximity switch will not be supplied. Cam supplied as target.

Other Motions (stops and index periods) available. Contact your DE-STA-CO sales representative for more information.

Input Shaft Configuration/Rotation (Figure 1)

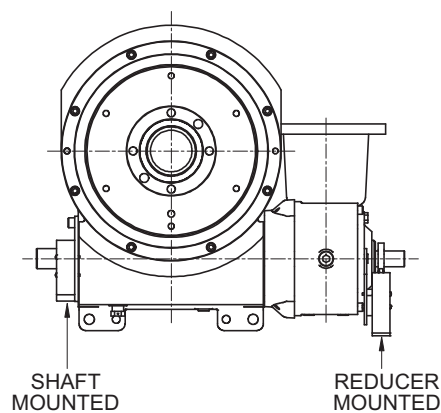


Relative Rotation for Right Hand Cam:

- CW Input Side 1 CCW Output
- CCW Input Side 2 CW Output

NOTE: Input can be driven in either direction

Signal Switch Mounting Position (Figure 2)



Dimensions and technical information are subject to change without notice.

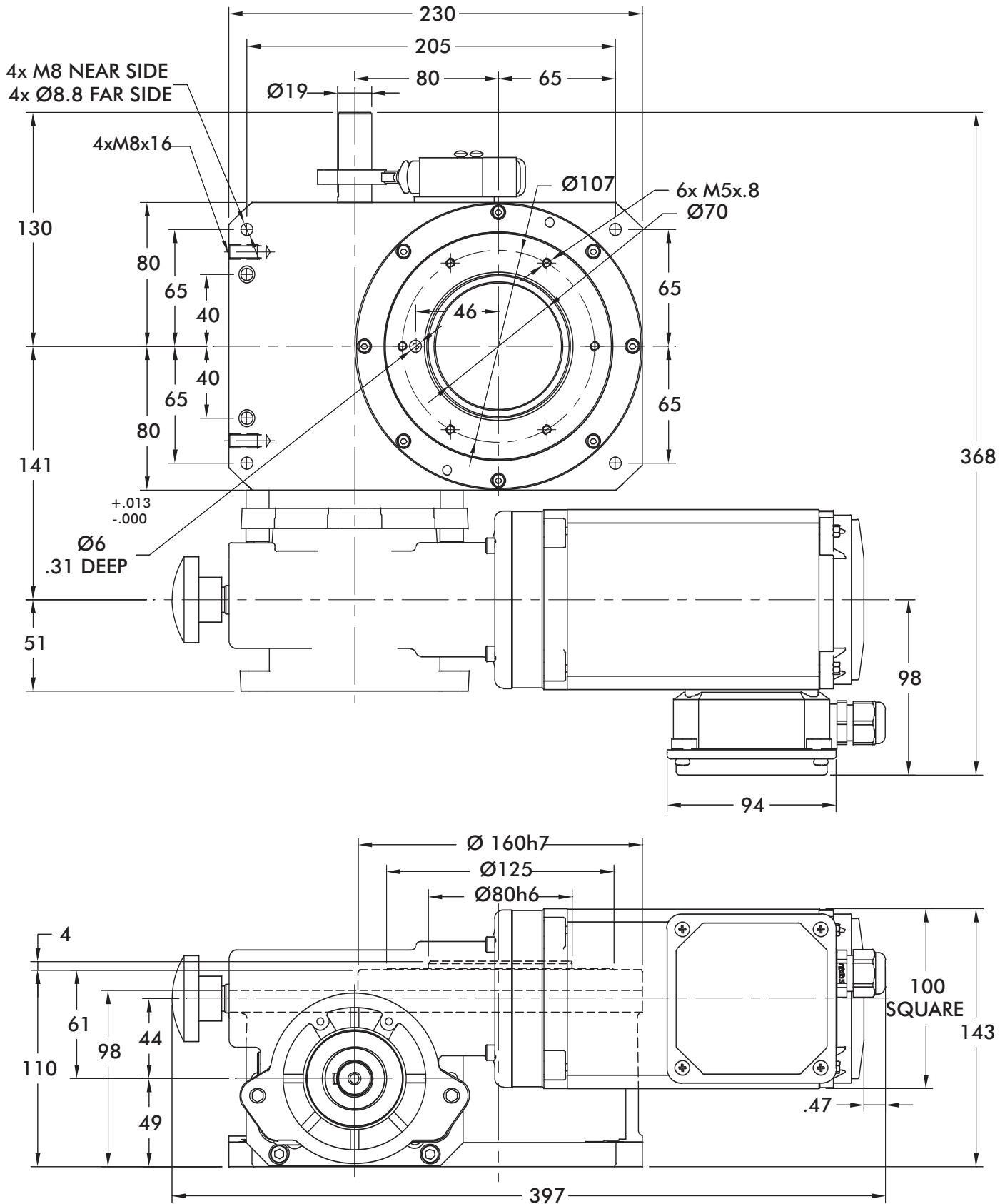
Input/Output Orientation (Figure 3)

OVOI (output vertical, over input)	OVUI (output vertical, under input)	OHOI (output horizontal, over input)	OHUI (output horizontal, under input)	H-S1-UP (output horizontal, side 1 up)	H-S2-UP (output horizontal, side 2 up)

Gear Reducer Mounting Positions (Figure 4)

		Mounting "A"		Mounting "B"	
		RD Worm	LD Worm	RD Worm	LD Worm
SIDE 1					
SIDE 2					
		Mounting "C"		Mounting "D"	
		RD Worm	LD Worm	RD Worm	LD Worm
SIDE 1					
SIDE 2					

Dimensions and technical information are subject to change without notice.

80RDM Standard Dimensions


Unless otherwise noted,
 all dimensions are in mm.

Dimensions and technical information are subject to change without notice.



80RDM Product Overview and Technical Specifications

Maximum Inertia x 1000 [lb-in ²] for standard package							
Stops	Motion Time [seconds]						
	0.458	0.611	0.764	0.917	1.222	1.528	1.833
2	0	1	2	5	10	16	23
3	1	3	7	11	21	32	47
4	2	6	13	23	46	74	104
6	5	13	28	43	84	137	191
8	7	15	25	39	76	127	191
12	17	34	57	88	170	191	191
16	16	31	52	79	153	191	191
Reducer Ratio							
	15	20	25	30	40	50	60

Contact your DE-STA-CO sales representative for more information.

Features

- R180 Reducer (Ratios from 15:1 to 60:1)
 - Double Extended Worm Shaft (Input)
 - Worm Shaft Handwheel
- Double Extended Camshaft (Input Shaft)
- Center Thru Hole (70 mm / 2.76 in. Diameter)
- 1/3 hp AC Drive Package with Inverter Duty Motor and IM-pAC AC Drive (up to 60 cpm)
- Cycle Cam and Limit Switch Mounted to Camshaft
- Right Hand Cam
- Universal Mounting Capability

Optional Accessories

- 1/3 hp DC Motor
- Varipak DC Motor Control (up to 30 cpm)
- Stationary Center Post
- Dual Cam and Limit Switch
- Electric Clutch-Brake
- Left Hand Cam

Output Load Capacity (loads carried during index):

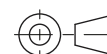
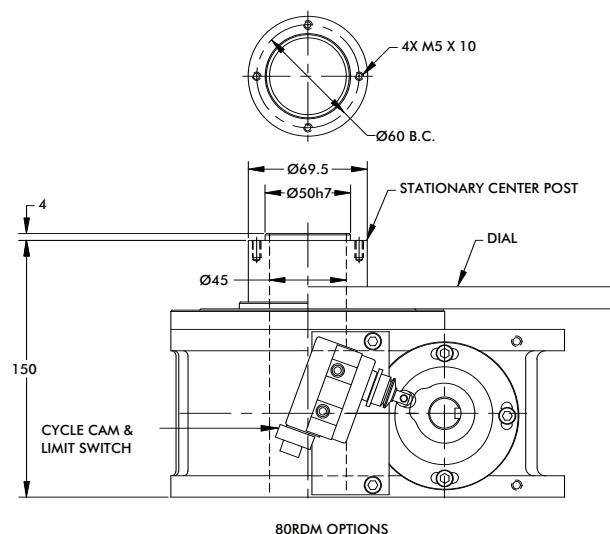
- Radial 755 lbs
- Thrust/Axial 1,885 lbs
- Moment 1,885 in-lb

Typical Application

Dial Diameter: 8 in. to 28 in.

Accuracy ±44 arcsec / ±.003" at 14" Radius

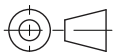
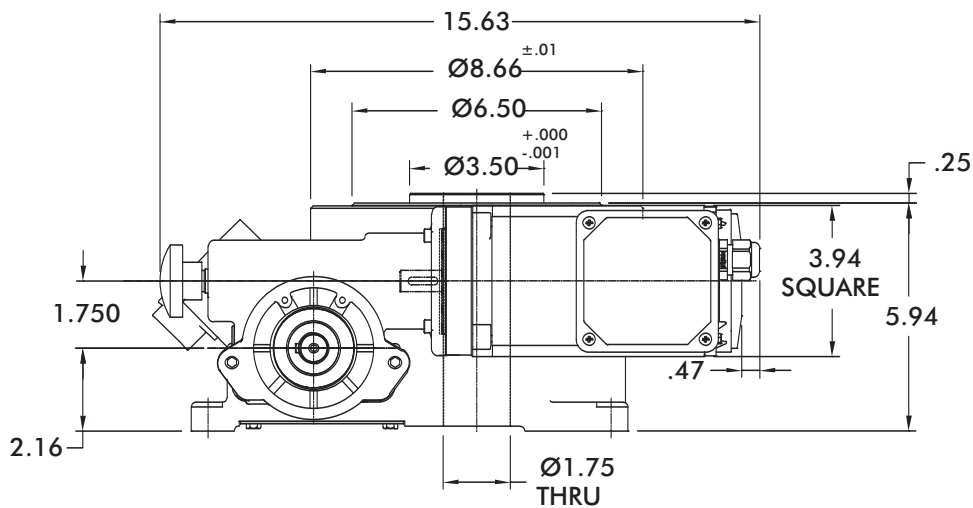
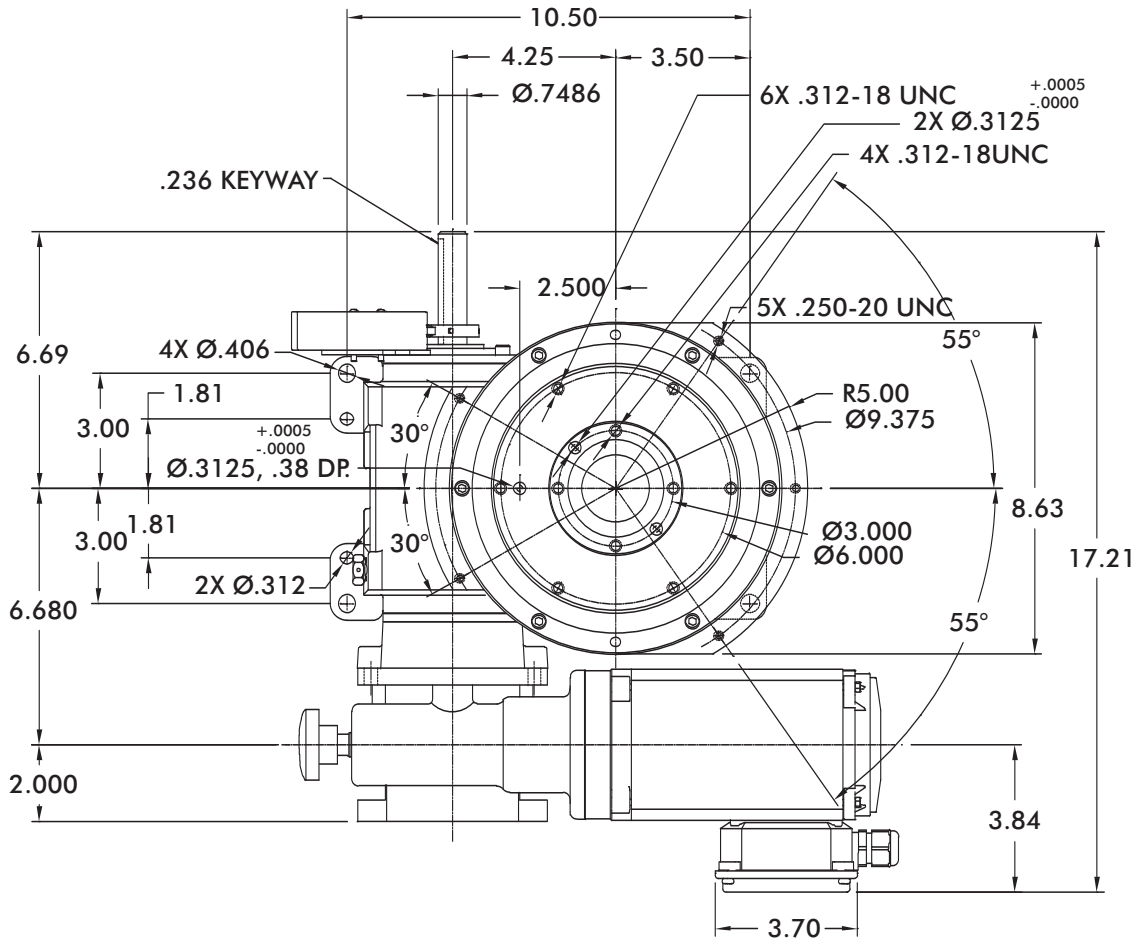
Repeatability ±11 arcsec / ±.0007" at 14" Radius



Unless otherwise noted, all dimensions are in mm.

Dimensions and technical information are subject to change without notice.

601RDM Standard Dimensions



Unless otherwise noted, all dimensions are in inches.

Dimensions and technical information are subject to change without notice.



601RDM Product Overview and Technical Specifications

Maximum Inertia x 1000 [lb-in ²] for standard package							
Stops	Motion Time [seconds]						
	0.458	0.611	0.764	0.917	1.222	1.528	1.833
2	0	1	2	5	11	17	24
3	1	3	7	12	28	42	58
4	2	6	13	23	52	78	106
6	5	14	28	51	112	168	228
8	10	25	51	90	199	299	406
12	22	57	115	204	449	478	478
16	40	101	205	361	478	478	478
Reducer Ratio							
	15	20	25	30	40	50	60

Other Motions (stops and index periods) available. Contact your DE-STA-CO sales representative for more information.

Features

- R180 Reducer (Ratios from 15:1 to 60:1)
 - Double Extended Worm Shaft (Input)
 - Worm Shaft Handwheel
- Double Extended Camshaft (Input Shaft)
- Center Thru Hole (1.75 in. Diameter)
- 1/3 hp AC Drive Package with Inverter Duty Motor and IM-pAC AC Drive (up to 60 cpm)
- Cycle Cam and Limit Switch Mounted to Camshaft
- Right Hand Cam

Output Load Capacity (loads carried during index):

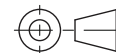
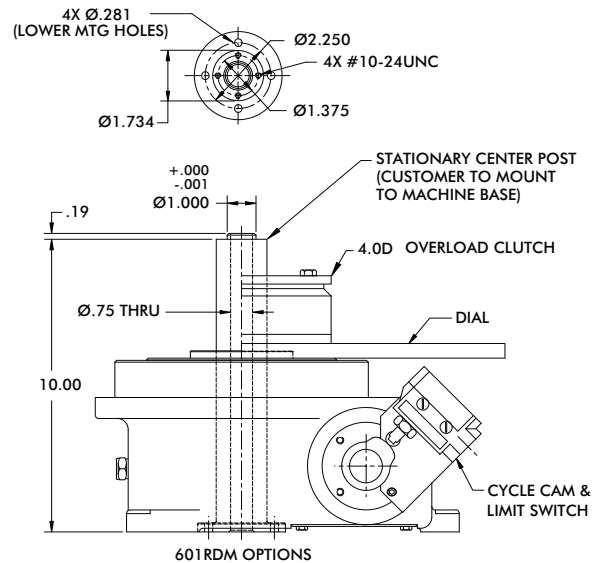
- Radial 945 lbs
- Thrust/Axial 2,360 lbs
- Moment 3,305 in-lb

Typical Application

- Dial Diameter: 12 in. to 36 in.
- Accuracy ±39 arcsec / ±.003" at 18" Radius
- Repeatability ±10 arcsec / ±.0009" at 18" Radius

Optional Accessories

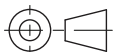
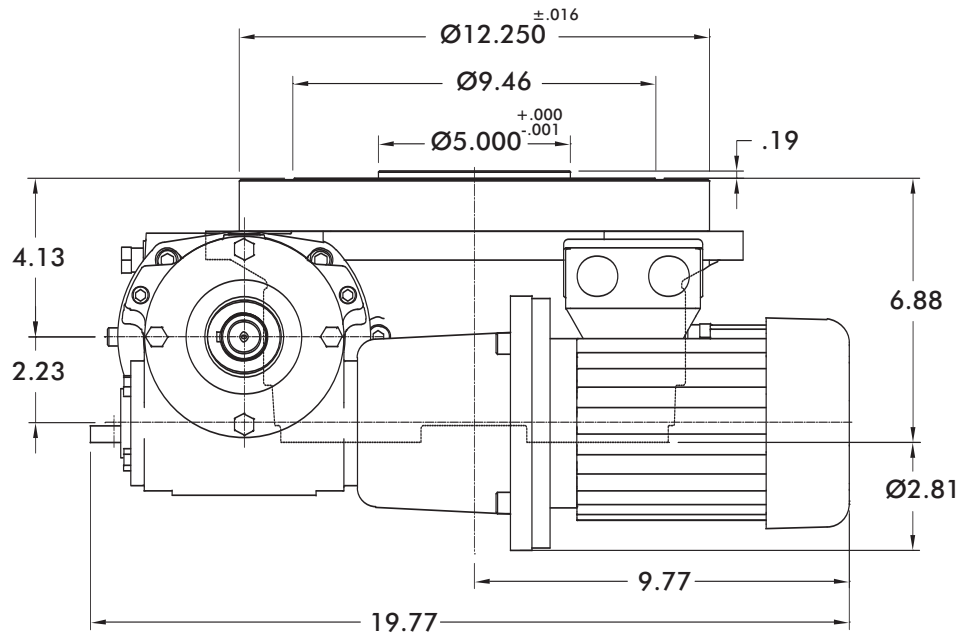
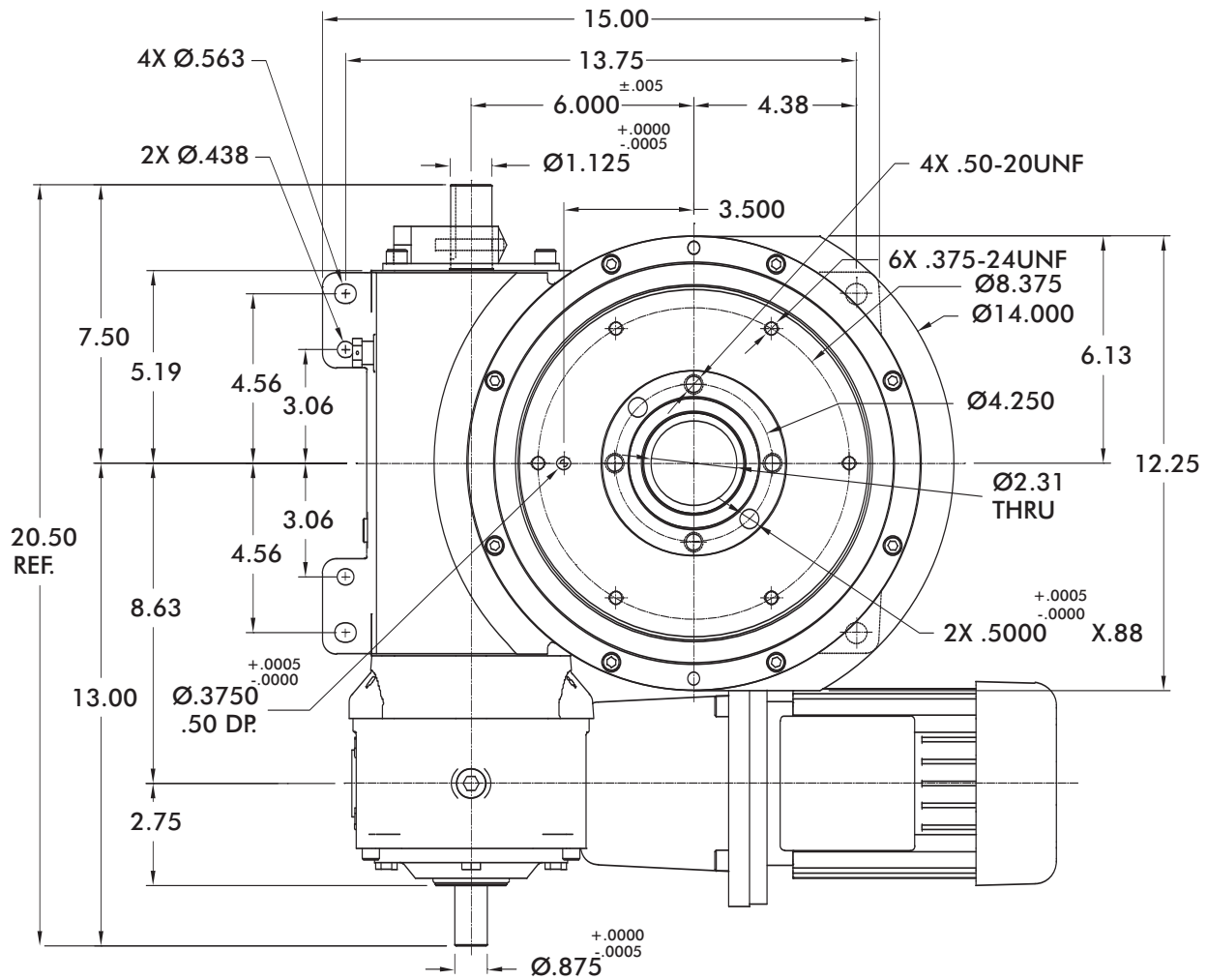
- 1/3 hp DC Motor
- Varipak DC Motor Control (up to 30 cpm)
- Output Overload Clutch model 4.0D
 - Available Settings (in-lbs): 420, 620, 750, 1150, 1750, 2940, 4000
- Stationary Center Post
- Dual Cam and Limit Switch
- Left Hand Cam
- Relief in Dwell for shot-pin applications



Unless otherwise noted, all dimensions are in inches.

Dimensions and technical information are subject to change without notice.

902RDM Standard Dimensions



Unless otherwise noted, all dimensions are in inches.

Dimensions and technical information are subject to change without notice.

902RDM Product Overview and Technical Specifications

Maximum Inertia x 1000 [lb-in ²] for standard package							
Stops	Motion Time [seconds]						
	0.458	0.611	0.764	0.917	1.222	1.528	1.833
2	1	3	7	12	26	40	55
3	4	11	23	41	84	126	174
4	8	20	41	73	150	226	310
6	18	44	90	158	323	485	667
8	32	80	160	282	575	864	1,187
12	73	181	338	487	865	1,352	1,948
16	130	313	506	728	1,295	2,024	2,914
Reducer Ratio							
	15	20	25	30	40	50	60

Other Motions (stops and index periods) available. Contact your DE-STA-CO sales representative for more information.

Features

- R225 Reducer (Ratios from 15:1 to 60:1)
- Single Extended wormshaft (Standard)
- Double Extended Camshaft (Input Shaft)
- Center Thru Hole (2.25 in. Diameter)
- 1 hp AC Drive Package with Inverter Duty Motor and IM-pAC AC Drive (up to 60 cpm)
- Cycle Cam and Limit Switch Mounted to Camshaft
- Right Hand Cam

Output Load Capacity (loads carried during index):

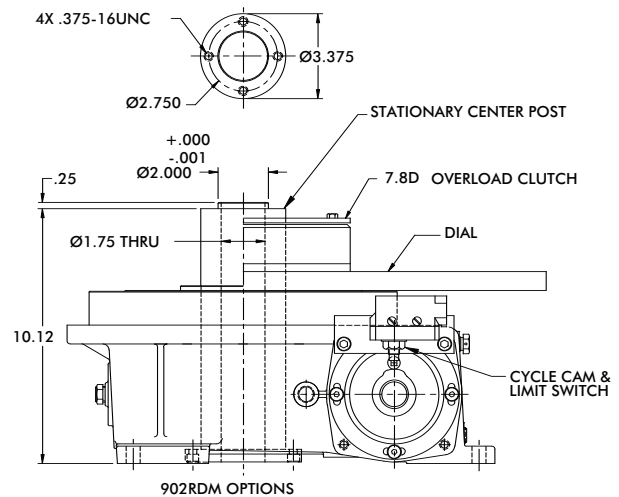
- Radial 3,540 lbs
- Thrust/Axial 7,000 lbs
- Moment 21,620 in-lb

Typical Application

- Dial Diameter: 20 in. to 48 in.
- Accuracy ±27 arcsec / ±.003" at 24" Radius
- Repeatability ±7 arcsec / ±.0008" at 24" Radius

Optional Accessories

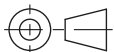
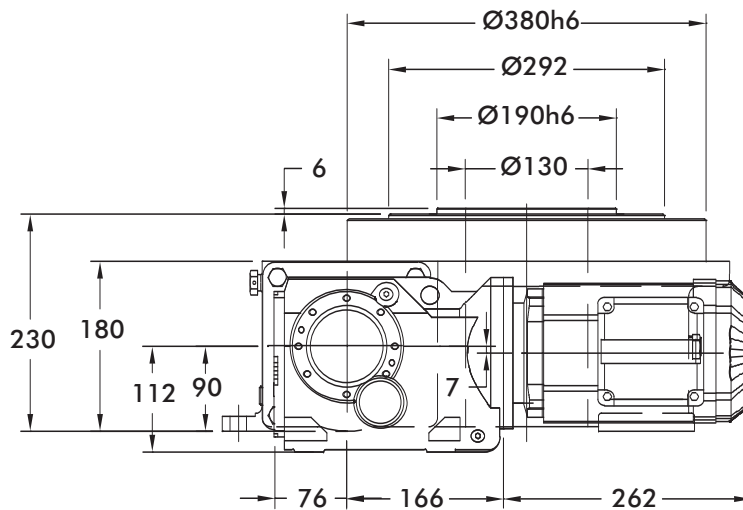
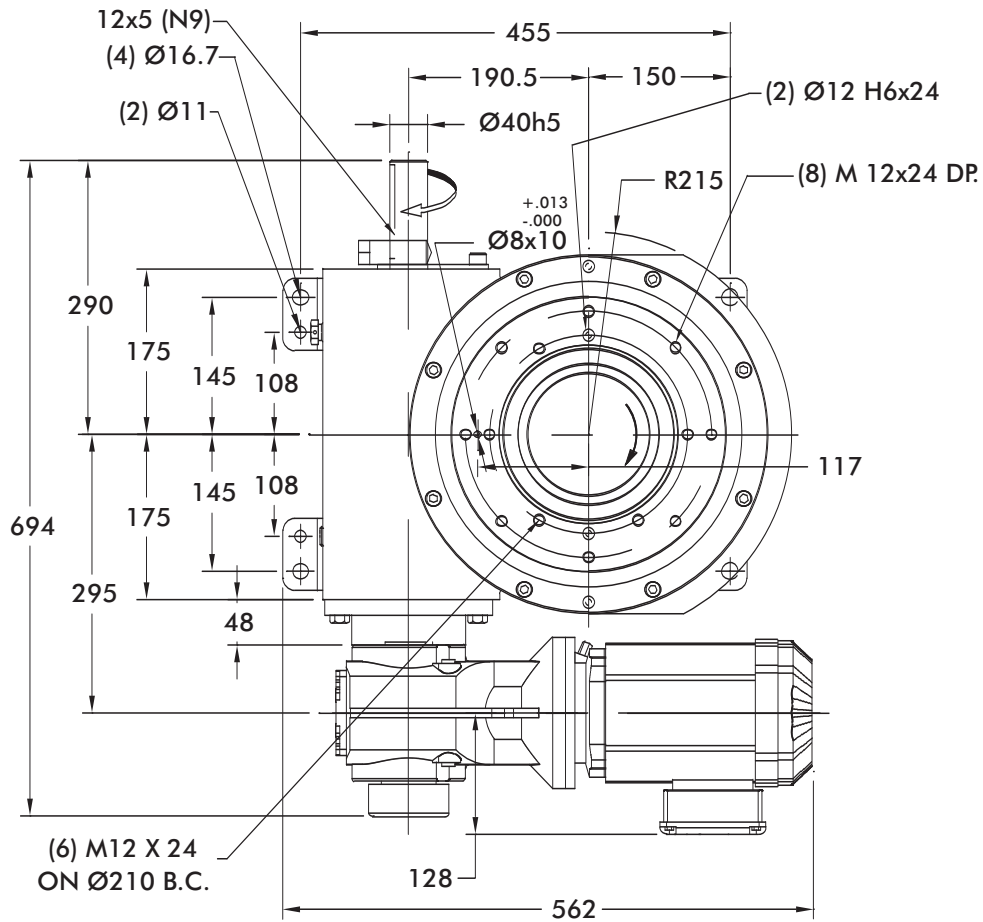
- 1 hp DC Motor
- Varipak DC Motor Control (up to 30 cpm)
- Output Overload Clutch model 7.8D
 - Available Settings (in-lbs): 1400, 1700, 2600, 3200, 4200, 5000, 7200, 10000
- Stationary Center Post
- Dual Cam and Limit Switch
- Base Riser Blocks
- Electric Clutch-Brake
- Left Hand Cam
- Relief in Dwell for shot-pin applications



Unless otherwise noted, all dimensions are in inches.

Dimensions and technical information are subject to change without notice.

1100RDM Standard Dimensions



Unless otherwise noted, all dimensions are in mm.

Dimensions and technical information are subject to change without notice.



1100RDM Product Overview and Technical Specifications

Stops	Maximum Inertia x 1000 [lb-in ²] for standard package						
	Motion Time [seconds]						
	0.458	0.611	0.764	0.917	1.222	1.528	1.833
2	1	5	11	22	60	117	177
3	6	13	27	52	137	265	400
4	13	27	55	104	270	521	785
6	30	61	120	227	582	1,122	1,688
8	55	111	216	405	1,037	1,995	2,705
12	126	251	488	913	2,335	4,293	5,786
16	225	449	869	1,414	2,659	4,061	5,474
Reducer Ratio							
	15.86	19.58	24.06	29.32	39.61	48.95	56.83

Other Motions (stops and index periods) available. Contact your DE-STA-CO sales representative for more information.

Features

- KH47 Reducer and AC Motor with Optional Brake
- Double Extended Camshaft (Input Shaft)
- Center Thru Hole (130 mm / 5.1 in. Diameter)
- AC drive package with Inverter Duty Motor and Inverter Drive (up to 60 cpm)
- Cycle Cam and Limit Switch Mounted to Camshaft
- Right Hand Cam

Output Load Capacity (loads carried during index):

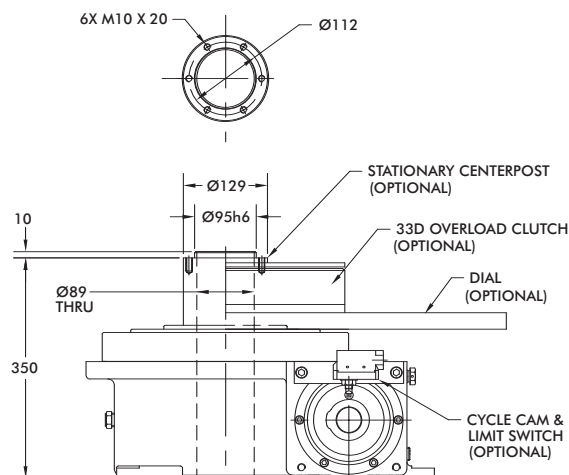
- Radial 3100 lbs
- Thrust/Axial 8000 lbs
- Moment 28,674 in-lbs

Typical Application

- Dial Diameter: 20 in. to 60 in.
- Accuracy ±22 arcsec / ±.003" at 30" Radius
- Repeatability ±5 arcsec / ±.0008" at 30" Radius

Optional Accessories

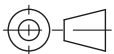
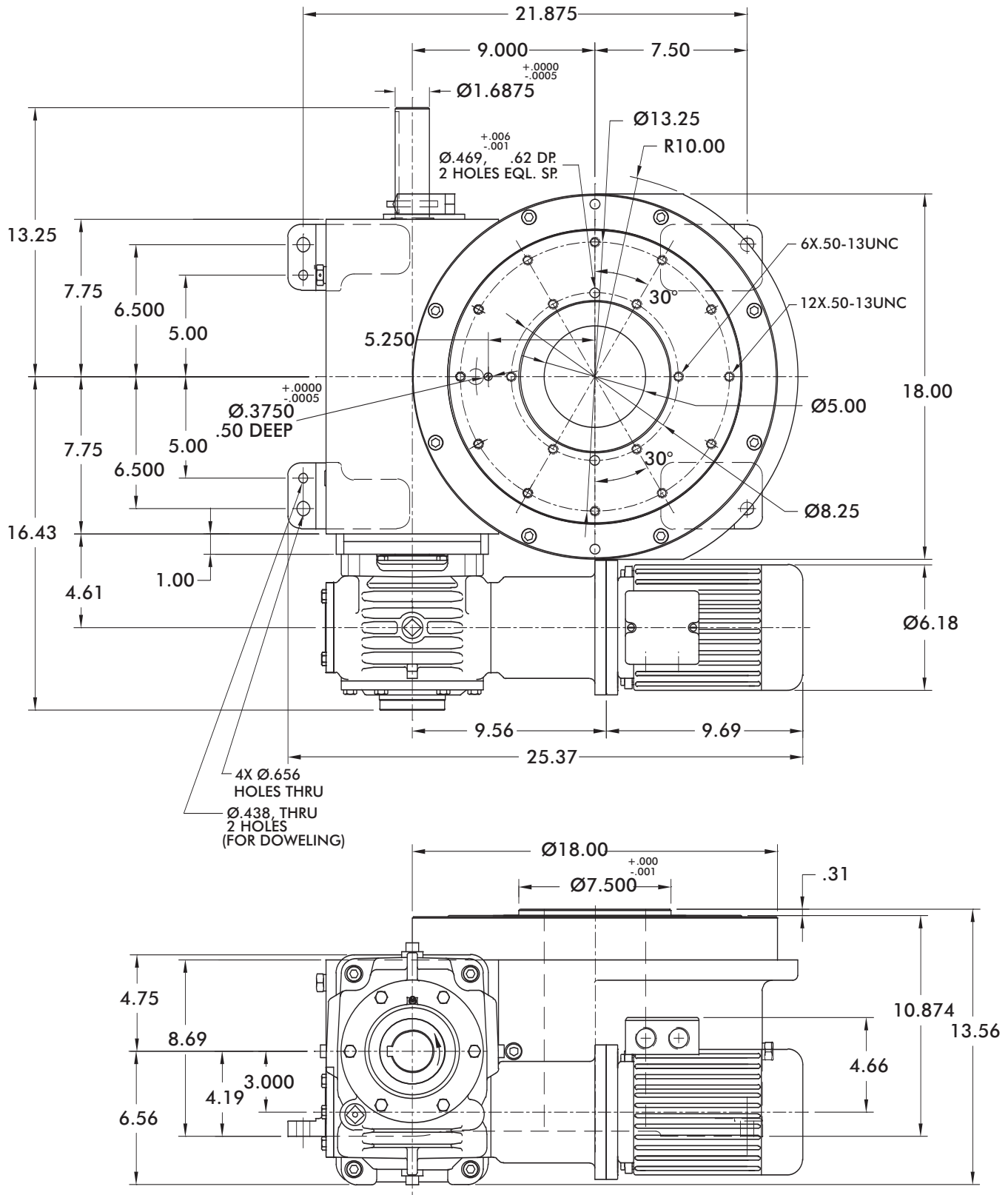
- 7300C Reducer (Ratios from 15:1 to 60:1)
- 1.5 hp DC motor
- Varipak DC Motor Control (up to 30 cpm)
- 7350C Heavy Duty Reducer (Ratios from 10:1 to 60:1)
- Stationary Center Post
- Dual Cam and Limit Switch
- Left Hand Cam
- Relief in Dwell for shot-pin applications



Unless otherwise noted, all dimensions are in mm.

Dimensions and technical information are subject to change without notice.

1305RDM Standard Dimensions



Unless otherwise noted,
all dimensions are in inches.

Dimensions and technical information are subject to change without notice.



1305RDM Product Overview and Technical Specifications

Maximum Inertia x 1000 [lb-in ²] for standard package							
Stops	Motion Time [seconds]						
	0.458	0.611	0.764	0.917	1.222	1.528	1.833
2	0	4	13	26	48	73	102
3	2	11	26	50	88	133	184
4	10	32	71	130	227	340	467
6	25	72	154	281	485	724	994
8	47	131	277	502	864	1,290	1,770
12	111	300	629	1,134	1,950	2,908	3,988
16	200	537	1,121	2,019	3,470	5,173	7,092
Reducer Ratio							
	15	20	25	30	40	50	60

Other Motions (stops and index periods) available. Contact your DE-STA-CO sales representative for more information.

Features

- 7300C Reducer (Ratios from 15:1 to 60:1)
- Double Extended Camshaft (Input Shaft)
- Center Thru Hole (5.00 in. Diameter)
- 2 hp AC Drive Package with Inverter Duty Motor and Inverter Drive (up to 60 cpm)
- Cycle Cam and Limit Switch Mounted to Camshaft
- Right Hand Cam

Output Load Capacity (loads carried during index):

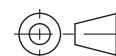
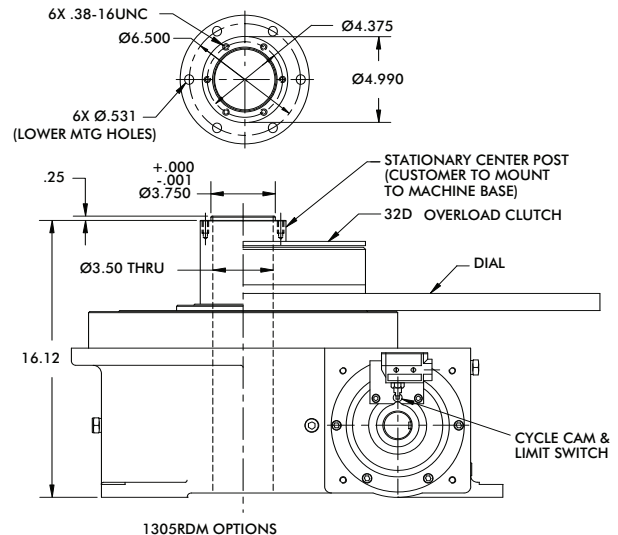
- Radial 4,650 lbs
- Thrust/Axial 11,650 lbs
- Moment 40,528 in-lb

Typical Application

- Dial Diameter: 20 in. to 72 in.
- Accuracy ±38 arcsec / ±.007" at 36" Radius
- Repeatability ±10 arcsec / ±.002" at 36" Radius

Optional Accessories

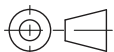
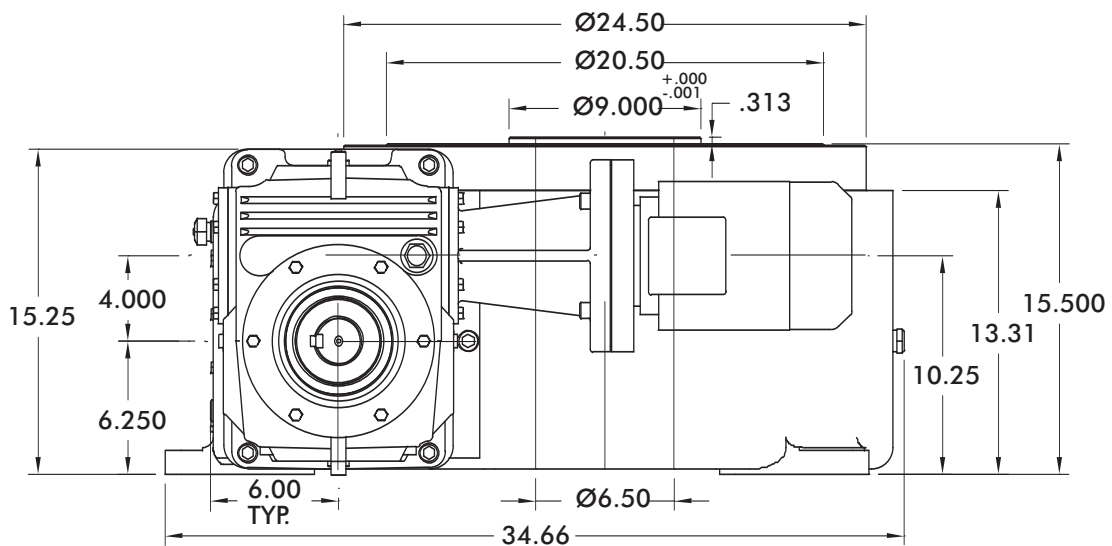
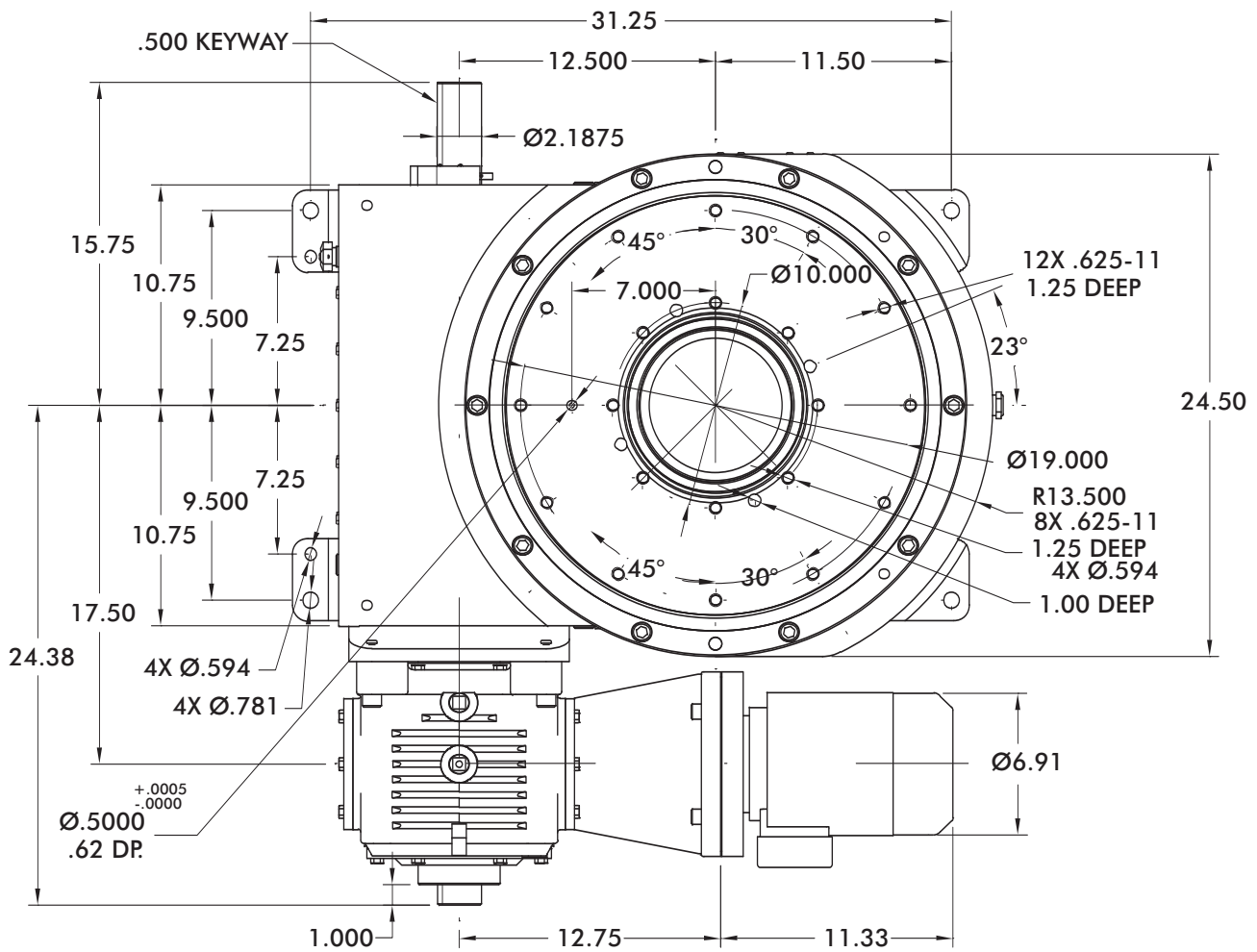
- 2 hp DC Motor
- Varipak DC Motor Control (up to 30 cpm)
- 7350C Heavy Duty Reducer (Ratios from 10:1 to 60:1)
- Output Overload Clutch model 32D
 - Available Settings (in-lbs): 8500, 13000, 20000, 31000
- Stationary Center Post
- Dual Cam and Limit Switch
- Base Riser Blocks
- Electric Clutch-Brake
- Left Hand Cam
- Relief in Dwell for shot-pin applications



Unless otherwise noted, all dimensions are in inches.

Dimensions and technical information are subject to change without notice.

1800RDM Standard Dimensions



Unless otherwise noted, all dimensions are in inches.

Dimensions and technical information are subject to change without notice.



1800RDM Product Overview and Technical Specifications

Maximum Inertia x 1000 [lb-in ²] for standard package							
Stops	Motion Time [seconds]						
	0.458	0.611	0.764	0.917	1.222	1.528	1.833
2	0	0	8	27	91	182	256
3	0	11	41	87	246	472	655
4	1	31	85	169	455	862	1,192
6	19	83	197	375	981	1,842	2,542
8	45	158	361	678	1,754	3,286	4,530
12	120	376	832	1,544	3,966	7,412	10,211
16	224	679	1,490	2,756	7,062	13,188	18,163
Reducer Ratio							
	15	20	25	30	40	50	60

Features

- 7400C Reducer (Ratios from 15:1 to 60:1)
- Double Extended Camshaft (Input Shaft)
- Center Thru Hole (6.50 in. Diameter)
- 2 or 3 hp AC Drive Package with Inverter Duty Motor and Inverter Drive (up to 60 cpm)
- Cycle Cam and Limit Switch Mounted to Camshaft
- Right Hand Cam

Output Load Capacity (loads carried during index):

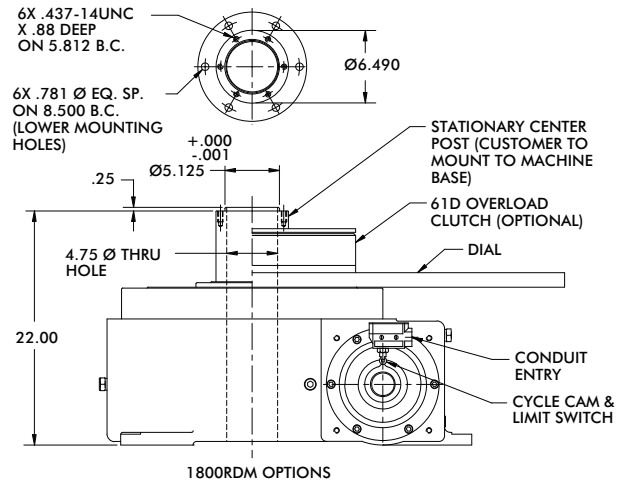
- Radial 5,850 lbs
- Thrust/Axial 14,650 lbs
- Moment 68,119 in-lb

Typical Application

- Dial Diameter: 26 in. to 96 in.
- Accuracy ±27 arcsec / ±.006" at 48" Radius
- Repeatability ±7 arcsec / ±.0016" at 48" Radius

Optional Accessories

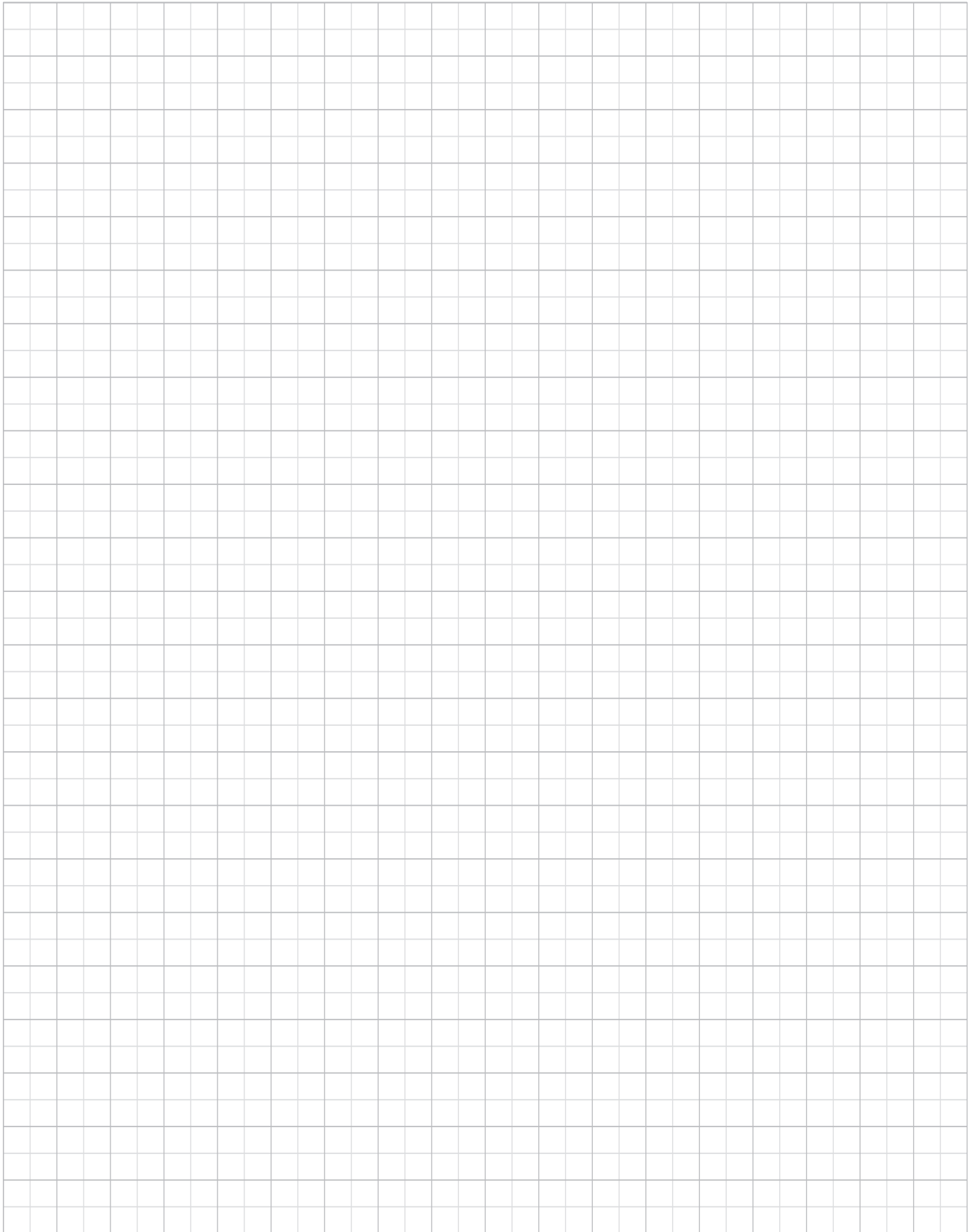
- 2 hp DC Motor with Varipak DC Motor Control (up to 30 cpm)
- 3 hp DC Motor
- 7500C Heavy Duty Reducer (Ratios from 10:1 to 60:1)
- Output Overload Clutch model 61D – Available Settings (in-lbs): 23000, 36000, 44000, 50000, 60000
- Stationary Center Post
- Dual Cam and Limit Switch
- Base Riser Blocks
- Electric Clutch-Brake
- Left Hand Cam
- Relief in Dwell for shot-pin applications



Unless otherwise noted, all dimensions are in inches.

Dimensions and technical information are subject to change without notice.

Notes



Dimensions and technical information are subject to change without notice.