



---

*Complete Metal Fabrication and Machine Shop*

**P.O. Box 879**

**18 Gerald McCarville Drive**

**Kensington, PE, C0B 1M0**

**Ph: 1-902-836-8200**

**Fax: 1-902-836-8202**



**KMP SNOWBLOWER :**

**86SANRD - 86SARD**

<b>Model Number</b>	
<b>Serial Number</b>	
<b>Dealer Name</b>	
<b>Date of Purchase</b>	

# WARRANTY

Kensington Metal Products, Inc. (KMP) hereby provides the following warranty to the purchaser which warranty is for a one year period from the date of purchase when the product is for the personal use of the purchaser or alternatively, for a ninety (90) days from the date of purchase whenever the product is used for commercial purposes or is rented out to a third party.

KMP warrants that the product is free from defects in material and workmanship. Motors, actuators, hydraulic components, and other components not manufactured by KMP are not warranty by KMP but are subject to the original manufacturer warranty where applicable. KMP's obligation under this warranty shall be limited to repairing or replacing, free of charge to the original purchaser, any part that in KMP's judgement shows evidence of such defect, reasonable wear and tear accepted.

KMP shall not be liable for injuries or damages of any kind including losses due to delays or to any expense or losses incurred for labour, substitute machinery, rental or other reason. Except as set hereinbefore set forth above, KMP has no obligation or liability of any kind on account of any of its equipment or products and shall not be liable for special or consequential damages. KMP makes no other warranty, expressed or implied, and specifically, KMP disclaims an implied warranty of merchantability or fitness for a particular purpose.

This warranty is subject to any existing conditions of supply which may directly affect KMP's ability to obtain materials or manufacture replacement parts. KMP reserves the right to make improvements in design to changes in specifications at any time without incurring any obligation to owners of units previously sold.

No one is authorized to alter, modify or enlarge this warranty nor the exclusions, limitations and reservations.

*To assist your dealer in handling your needs, please record hereafter the model number and serial number of your implement and tractor. It is also advisable to supply them to your insurance company. It will be helpful in the event that an implement or tractor is lost or stolen.*

## TO THE PURCHASER

All KMP products are designed to give safe, dependable service if they are operated and maintained according to instructions. Read and understand this manual before operation.

This manual has been prepared to assist the owner and operators in the safe operation and suitable maintenance of the implements. The information was applicable to products at the time of manufacture and does not include modifications made afterwards.

Read and understand this operator's manual before attempting to put an implement into service. Familiarize yourself with the operating instructions and all the safety recommendations contained in this manual and those labeled on the implements and on the tractor. Follow the safety recommendations and make sure that they are followed by those with whom you work.

# SAFETY PRECAUTIONS

## **! SAFETY FIRST**

\_\_\_\_\_ This symbol, the industry's "Safety Alert Symbol", is used throughout this manual and on labels on the machine itself to warn of the possibility of personal injury. Read these instructions carefully. It is essential that you read the instructions and safety regulations before you attempt to assemble or use this unit

- ! DANGER:** Indicates and immediately hazardous situation which, if Not avoided, will result in death or serious injury.
- ! WARNING:** Indicates a potentially hazardous situation which, if not avoided, could result in death or serious injury.
- ! CAUTION:** Indicates a potentially hazardous situation which, if not avoided, may result in minor or moderate injury.
- IMPORTANT:** Indicates that equipment or property damage could result if Instructions are not followed.
- NOTE:** Gives helpful information.

All products are designed to give safe, dependable service if they are operated and maintained according to instructions. Read and understand this manual before operation. It is the owner's responsibility to be certain anyone operating this product reads this manual., Failure to do so could result in serious personal injury or equipment damage. If you have any questions, consult your dealer.

## **NOTICE**

A safe operator is the best insurance against accidents. All operators, no matter how experienced they may be, should read these Operation Manual and all other related manuals before attempting to operate the snow blower. Please read the following section and pay particular attention to all safety recommendations contained in this manual and those labeled on the implements and on the tractor.

# **BEFORE OPERATING YOUR SNOWBLOWER**

## **Before Operation**

- 1. Read and understand this operator's manual and tractor operator's manual. Know how to operate all controls and how to stop the unit and disengage the controls quickly.**
- 2. Never wear loose, torn or bulky clothing around the tractor and implement. It may catch on moving parts or controls, leading to the risk of accident.**
- 3. Before the snow season, thoroughly inspect the area where the equipment is to be used and remove all other foreign objects.**
- 4. Disengage clutch and shift into neutral before starting the engine.**
- 5. Do not operate equipment in wintertime without wearing adequate winter garments.**
- 6. Never attempt to make any adjustments while engine is running. Read this manual carefully to acquaint yourself with the equipment as well as the tractor operator's manual. Working with unfamiliar equipment can lead to accidents. Be thoroughly familiar with the controls and proper use of the equipment. Know how to stop the unit and disengage the controls quickly.**
- 7. Keep all shields in place and properly tighten all mounting hardware.**
- 8. Periodically, inspect all moving parts for wear and replace with authorized service parts if an excessive amount of wear is present.**
- 9. Replace all missing, illegible, or damaged safety and warning decals. See list of decals in the operator's manual.**
- 10. Do not modify or alter this equipment or any of its components, or any equipment function without first consulting your dealer.**
- 11. Keep safety decals clean of dirt and grime**

## **Snowblower Operation**

- 1. In case of belt-driven equipment, make sure drive belt is routed properly before operation.**
- 2. Before leaving the tractor unattended, take all possible precautions. Disengage the drive belt if so equipped, stop the engine and remove the ignition key. Lower the implement to the ground.**
- 3. Before starting the snowblower, remove any ice that has accumulated in the auger.**
- 4. Watch carefully for foreign objects that could enter the blower while operating.**
- 5. Be sure the clutch switch/lever is in OFF position before starting engine.**
- 6. Do not put hands or feet near rotating parts. Keep clear of discharge opening at all times.**
- 7. Exercise extreme caution when operating on or crossing a gravel drive, walks, or roads. Stay alert for hidden hazards or traffic. Do not carry passengers.**
- 8. Adjust collector housing height to clear gravel or crushed rock surface**
- 9. Stop the engine, remove the key, and allow the rotating parts to stop before unclogging the collector/impeller housing or chute, and making any repairs, adjustments or inspections.**
- 10. If the snowblower starts to vibrate abnormally, stop the engine immediately and check for cause. Excessive vibration is generally a sign of trouble.**
- 11. Do not run the engine indoors except when starting engine and transporting attachment in or out of building. Carbon monoxide gas is colorless, odorless and deadly.**
- 12. Exercise extreme caution when changing direction on slopes. Do not attempt to operate on steep slopes. Do not attempt to operate on steep slopes.**
- 13. Never operate snowblower without guards, and other safety protective devices in place.**
- 14. Never operate snowblower near glass enclosures, automobiles, window wells, embankments, etc., without proper adjustment of snow discharge angle.**
- 15. Never operate machine at high transport speeds on a slippery surface.**
- 16. Use extra caution when backing up**
- 17. Do not direct discharge at bystanders or animals. Ejected objects may cause injury.**
- 18. Disengage power to auger when transporting or when not in use.**

19. Never operate the snowblower without good visibility and lighting.
20. Prolonged exposure to loud noise can cause impairment or loss of hearing. Wear a suitable hearing protective device such as earmuffs or earplugs to protect against objectionable or uncomfortable noises.

## **Maintenance**

1. Park the tractor/snowblower on level ground, set the parking brake, disengage the PTO, shut off the engine, remove the key, and lower the implement to the ground BEFORE making any snowblower adjustments.
2. To avoid injury, do not adjust, unclog or service the snowblower with the tractor engine running. Making sure rotating components have completely stopped before leaving the operator's seat.
3. Keep the tractor/snowblower clean. Snow and ice build-up lead to malfunction or personal injury from thawing and refreezing in garage.
4. Always wear eye protection when cleaning or servicing the snowblower.
5. Do not work under any part of the tractor or snowblower, unless it is securely supported by safety Stands.
6. Make sure all shields and guards are securely in place following all service, cleaning, or repair work.
7. Do not modify or alter this equipment or any of its components or operating functions. If you have questions concerning modifications, consult with your dealer.

## **Transporting**

1. If the tractor/snowblower is to be driven on public roads, it must be equipped with an SMV (Slow Moving Vehicle) sign. Check local traffic codes that may apply to unit on public roads and highways in your area.
2. Be alert for all other traffic when driving the tractor/snowblower on public roads or highways.

# **ASSEMBLY**

## **Snowblower Installation**

1. Attach tractor lower hitch arms to snowblower attaching plates using the hitch pins and secure with linchpins
2. Install the tractor upper hitch on the upper hole of snowblower attaching plates using tractors pins and linchpins.
3. Adjust snowblower using the tractor upper hitch so that it runs level.
4. Set the tractor anti-sway turnbuckles so the snowblower does not sway.

**! CAUTION:** Before connecting snowblower driveline to tractor drive shaft, make sure driveline is not too long in raised, lowered and middle position. If the driveline is too long it must be shortened, to avoid damaged to tractor.

5. Connect driveline to tractor drive P.T.O., make sure that the driveline yoke pin is properly engaged

## **Removing Snowblower from Tractor.**

1. Set snowblower completely on the ground to release all pressure from the three-point hitch. Set parking brake and turn engine off.
2. Detach upper link by removing linchpin and pin.
3. Disconnect driveline from tractor P.T.O. shaft and set driveline on support chain.
4. Carefully detach lower links by removing linchpins loosen anti-sway turnbuckles.

**IMPORTANT** Re-torque all bolts after the first 10 hours of operation.

# OPERATION

## GENERAL PREPARATION

1. Read the operation manual carefully before using the tractor and snowblower. Be thoroughly familiar with the controls and proper use of the equipment. Know how to stop unit and engage the controls quickly.
2. Make sure the snowblower is clear of snow before engaging the driveline.
3. Make sure the auger and fan operate freely.
4. Check the oil level in the worm gear box and if necessary, add SAE 80W 90
5. Check the two shear bolts, one on the PTO shaft and one for the auger for proper tightness.
6. Adjust so that the snowblower skid shoes run level.
7. Wear adequate winter outer garments, while operating equipment.

## OPERATING CONTROLS

**Work and Travel Speed** : Working ground speed will depend on the depth and density of the snow to be cleared. Normally, ground speed will range from 4 to 7 MPH for light, dry snowfalls 3 to 6 inches, and 1 to 3 MPH for heavy, wet or drifted snow. To transport, disengage the driveshaft and raise the snowblower to full transport height.

! **WARNING:** \_\_\_\_\_ To avoid personal injury, be sure the tractor engine is off, the drive shaft disengaged, and all movement has stopped before making and adjustments.

**Reduction Chain Tension Adjustment** : The premature wear of the chain may be caused by tension being too tight. It is therefore important by tension being too tight. It is therefore important not to tighten chain to its maximum.

- To adjust the tension on the drive chain, loosen the bolt, securing the idler sprocket to the snowblower housing.
- To tighten the chain, lower the bolt. Leave approximately 1/8" deflection in one span of the chain. Retighten securely the bolt holding the idler sprocket.

**Manual Deflector Adjustment** : Set the angle of deflection according to the distance the snow must be thrown, To set the deflector angle, remove the adjusting pipe hair pin and adjust the adjusting rod to the desired deflector angle. Secure with the adjusting pipe hair pin.

**Snow Removal Methods** : When removing snow, do not use the snowblower as a dozer blade to push snow. Let the snowblower work its way through deep drifts. If the speed or your tractor is too fast, the snowblower may become overloaded and clog. For best results, raise the snowblower and remove a top layer of snow. A second pass with the snowblower will remove the remaining snow.

**IMPORTANT:** Use Full RPM power when removing wet, sticky snow.  
Low RPM power will tend to clog the chute.

- ! **WARNING:** Do not use hands or feet to unclog chute. Do not attempt to clear clogged chute of snow while tractor engine is running. If the chute clogs, disengage the drive shaft shut off the tractor engine, remove the ignition Key, wait for all movement to stop, and then clear the snow from the chute.
-

# MAINTENANCE

## Storage

1. Clean the snowblower thoroughly.
2. Make all the necessary repairs.
3. Replace all Safety Signs that are damaged , lost , or otherwise become illegible. If a part to be replaced has a sign on it, obtain a new safety sign from your dealer and install it in the same place as on the removed part.
4. Repaint all parts from which paint has worn or peeled.
5. Lubricate the snowblower as instructed under “Lubrication” section.
6. When the snowblower is dry, oil and moving parts. Apply oil liberally to all surfaces to protect against rust.
7. Store in a dry place.
8. Check the shear bolts at frequent intervals for proper tightness to be sure the blower is in safe working condition.
9. Never store the tractor with fuel in the fuel tank inside a building where open flame or sparks are present. Allow the engine to cool before storing in any enclosure.
10. Run the snowblower a few minutes after blowing snow to prevent freeze up of the auger and the impeller.

!      **WARNING:** Provide adequate blocking before working under the snowblower when in the raised position.

---

**IMPORTANT:** When the snowblower is not used for more than two weeks, perform driveline maintenance and always store it in a dry place, away from bad weather conditions.

## Lubrication

1. **GEAR:** Check the oil level in the worm gear drive every month. If necessary add SAE 80W90 gear oil
2. **AUGER SECTIONS:** Grease the fitting on each auger sections every 24 hours of operation or once a year.
3. **REDUCTION CHAIN:** Lubricate with chain saw lubricant every 4 hours of operation and after each use.
4. **DRIVELINE (S):** Grease each u-joint fitting every 8 hours of operation. Slide drive shaft apart and coat sliding surfaces with grease every 8 hours of operation.
5. **ROTATION SHAFT:** Grease the shaft each 8 hours of operation.

## SPARE PARTS

<b>86" SINGLE AUGER SNOWBLOWER</b>	
<b>PART#</b>	<b>DESCRIPTION</b>
<b>127349</b>	<b>Gear Box - T27D (267.344)</b>
<b>114283</b>	<b>Sleeve - 0.267.7102 (1:1/4-19 X 1:1/4)</b>
<b>130939</b>	<b>Flanged Bearing - (UCF207-20) Y1</b>
<b>159262</b>	<b>Chain - 80-1R50 Roller Chain</b>
<b>106110</b>	<b>Sprocket - 80SB10H - 1: 1/4 (T27D)</b>
<b>106256</b>	<b>Sprocket - 80A30 - 1:1/4 (W/4 Holes 1/2)</b>
<b>175620</b>	<b>Idler Sprocket - S180A11 - 3/4</b>
<b>164666</b>	<b>PTO - T60-071P026544-26005 - W/GR F</b>
<b>170731</b>	<b>Hydraulic Motor - MLHPQ315C4D</b>
<b>176541</b>	<b>Relief Valve - KPDRH210/A/</b>

### NOTE:

**SEE FOLLOWING FOR SHOP DRAWINGS AND MORE INFORMATION**



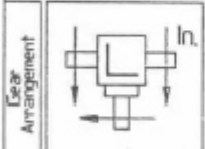
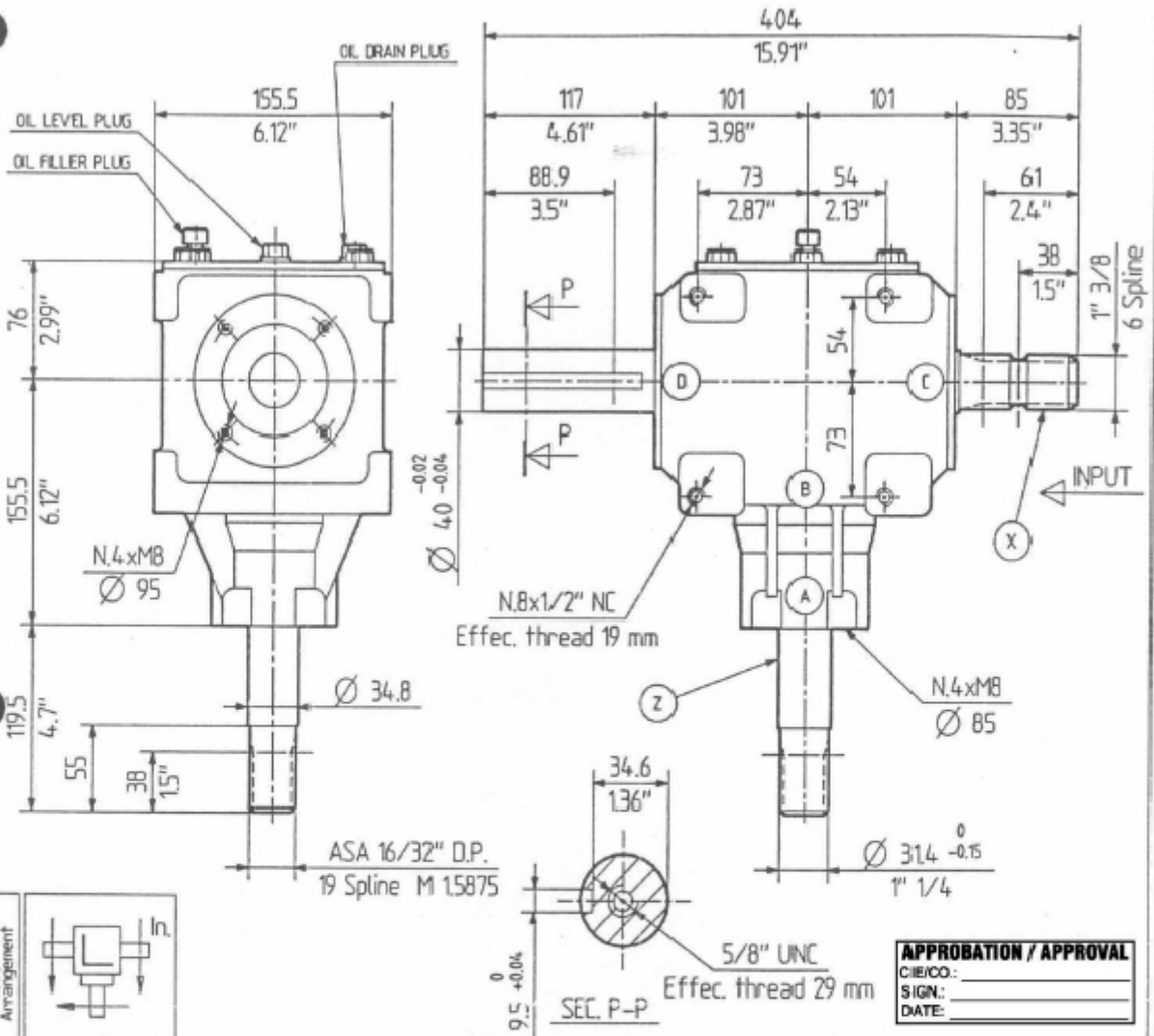


CANIMEX

DATE 04-05-94

CODE

DESIGNATION T-27 D  
267.344.00



**APPROBATION / APPROVAL**  
 C/IE/CO.: \_\_\_\_\_  
 SIGN: \_\_\_\_\_  
 DATE: \_\_\_\_\_

Ratio	Rated Input	Rated Input Power		Rated Output torque	Weight	Lubricant
i	r.p.m.	HP	KW.	da Nm	Kg	Oil <input checked="" type="checkbox"/> Grease <input type="checkbox"/>
1 : 1	540	55	40.5	69.3	22	SAE.90EP 12

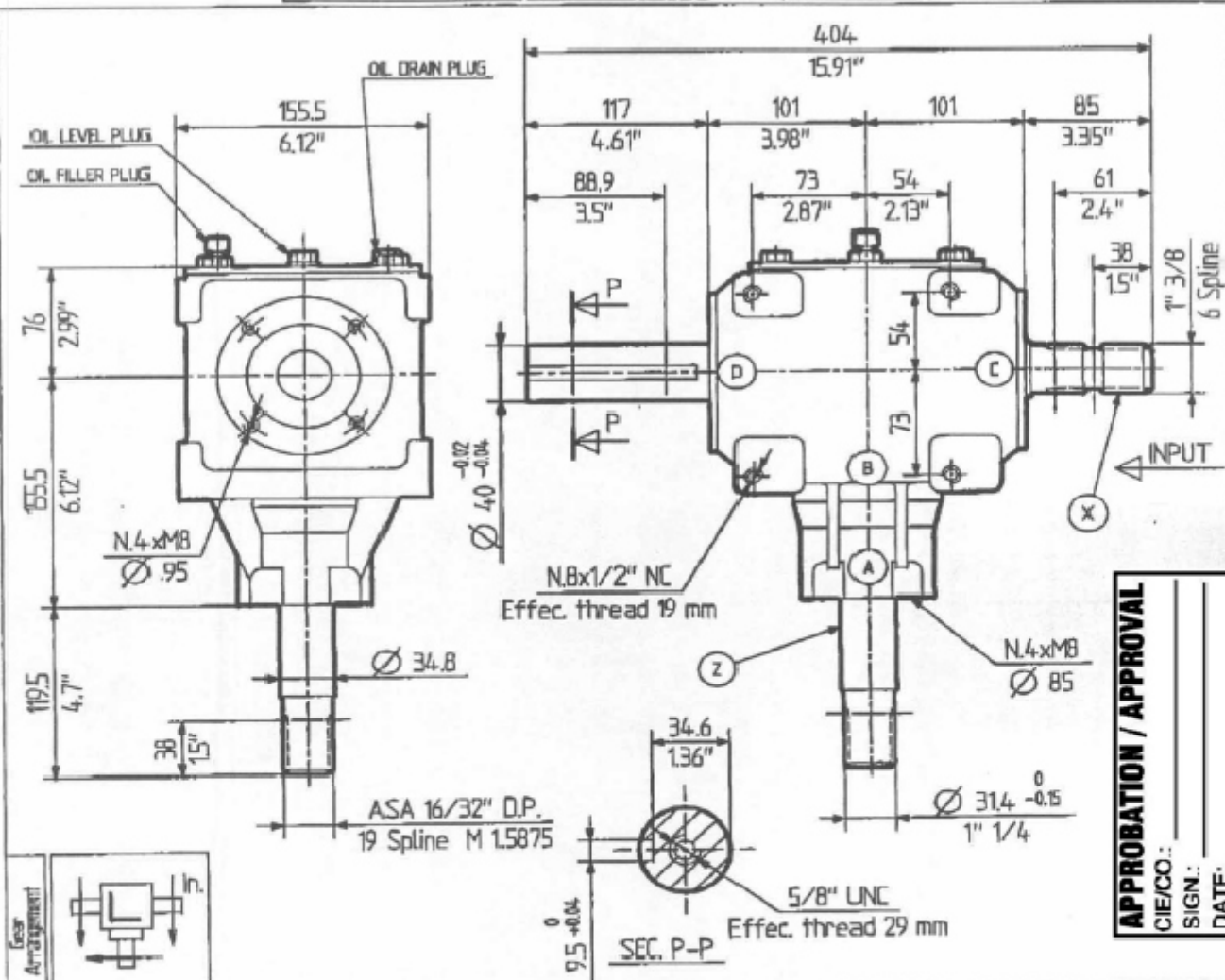
Bevel Couplings					Cylindrical Couplings					Bearings								
Helicoidal	Straight	Teeth Number				Module	Helicoidal	Straight	Teeth Number				Module	A	B	C	D	
		Z1	Z2	Z3	Z4				m	Z1	Z2	Z3						Z4
X		18	18			6.15												

Components Material				
Casing	Shaft X	Shaft Z	Bevel Gear	Spur Gear
G 25 UNI 5007	20 CrNi4	20 MnCr5	20 CrNi4	

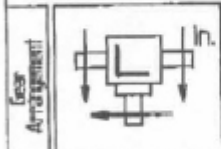
50° BEVEL GEAR



COMPANY <b>CANIMEX</b>	REF.	DESIGNATION	T-27 D
	DATE	20-09-2002	CODE



**APPROBATION / APPROVAL**  
 CIE/CO.: \_\_\_\_\_  
 SIGN.: \_\_\_\_\_  
 DATE: \_\_\_\_\_



<b>90° BEVEL GEAR</b>	Ratio		Rated Input		Rated Input Power		Rated Output torque		Weight		Lubricant						
	i		r.p.m.		HP   KW		da Nm		Kg		Oil Type   Grease Quantity Kg						
	1 : 1		54-0		55   40.5		69.3		22		SAE.90EP   1.2						
	Bevel Couplings						Cylindrical Couplings						Bearings				
			Teeth Number				Module		Teeth Number				Module				
			Z1	Z2	Z3	Z4	m				Z1		Z2	Z3	Z4	m	
	X		18	18			6.15										
Components Material												A 6207					
Casing		Shaft X		Shaft Z		Bevel Gear		Spur Gear				B 30207					
G 25 UNI 5007		16 Cr-Ni4		20 MnCr5		20 Cr-Ni4						C 30208					
												D 30208					
												E					
												F					
												G					
												H					



COMPANY

REF.

DESIGNATION

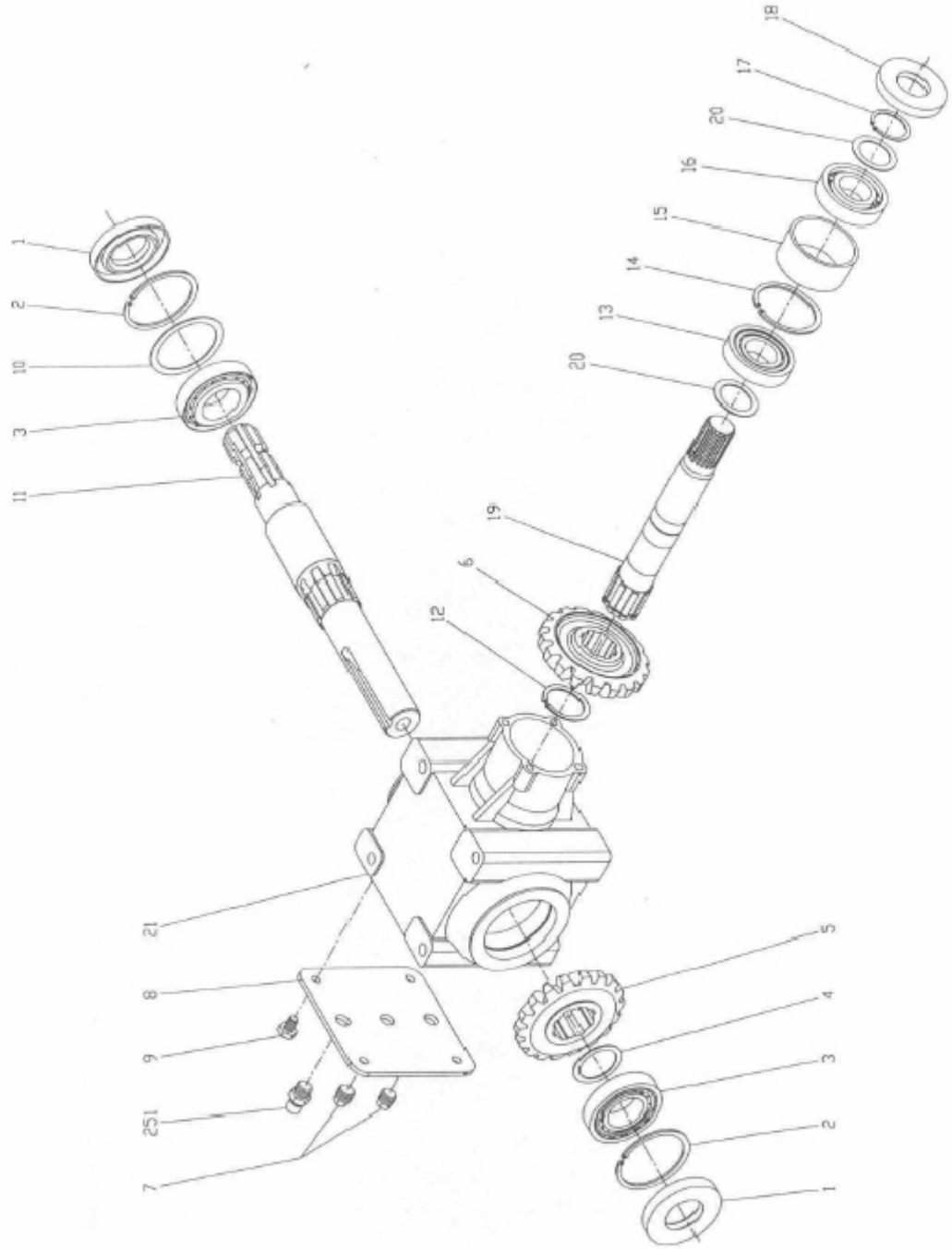
T-27 D

DATE

29-10-97

CODE

267.344.00





COMPANY

REF.

DESIGNATION

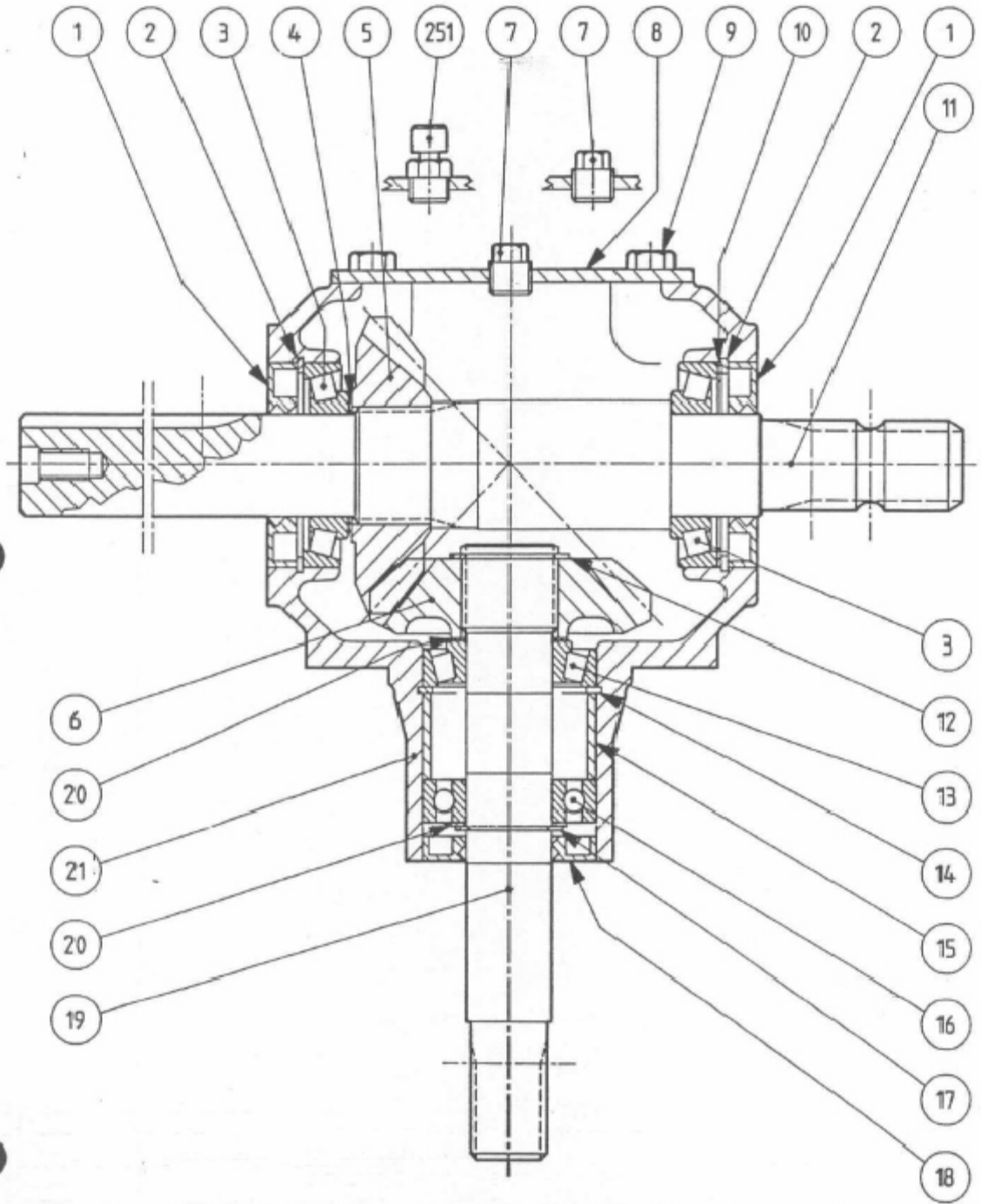
T-27 D

DATE

04-05-94

CODE

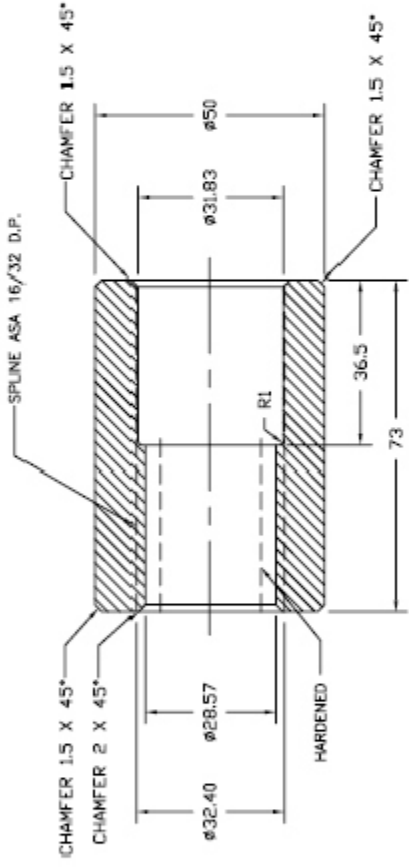
267.344.00




DESIGNATION GEAR BOX T-27D

CODE No 9.267.344.00

POS.	DRG. N.	PIEC	DESCRIPTION
1	8.7.1.00748	2	DOUBLE LIP SEAL 40X80X12
2	8.5.2.00030	2	SNAP RING 80 UNI7437
3	8.0.9.00024	2	BEARING 30208
4	0.244.7500.00	1	SHIM 51.5
5	0.132.5002.00	1	GEAR Z18 M6.15
6	0.267.5000.00	1	GEAR Z18 M6.15
7	8.6.5.00006	2	PLUG 3/8" GAS
8	0.267.1300.00	1	COVER
9	8.1.1.01031	4	BOLT M10X14 8,8
10	0.110.7500.00	1	SHIM 79,7
11	0.267.4221.00	1	SHAFT
12	8.5.1.00029	1	SNAP RING 40 UNI7435
13	8.0.9.00026	1	BEARING 30207
14	8.5.2.00131	1	SNAP RING 72 UNI7437
15	0.267.7100.00	1	SPACER
16	8.0.1.00025	1	BEARING 6207
17	8.5.1.00005	1	SNAP RING 35 UNI7435
18	8.7.1.00152	1	DOUBLE LIP SEAL 35X72 X10
19	0.267.2000.00	1	SHAFT 16/32" Z19
20	0.259.7500.00	2	SHIM 48.0
21	0.267.0301.00	1	CASING
251	8.6.7.00161	1	OIL FILLER PLUG 3/8G



**APPROBATION / APPROVAL**  
 CIE/CO.: \_\_\_\_\_  
 SIGN.: \_\_\_\_\_  
 DATE: \_\_\_\_\_

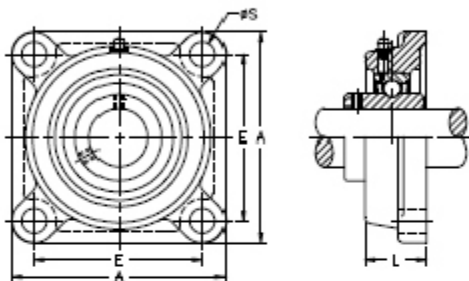
		TITLE 0.267.7102(SLEEVE 1:1/4-19X1:1/4)	
ONTARIO, CANADA TEL: (905) 477-1328 FAX: (905) 477-0288		MATERIAL BARE FINISH WITH LIGHT PROTECTIVE OIL	
PART NO. 114283		SCALE NTS	
DRAWN BY J.A.		DATE 2009/09/30	
CHECK BY P.L.		DWG # P-21548	
NO. DATE REVISION BY		REV. 1 PAGE 2/2	

NOTES:  
 -ALL DIMENSIONS ARE IN MILLIMETERS.  
 FOR CUSTOMER'S USE ONLY

CONFIDENTIAL: THIS DRAWING AND/OR THE INFORMATION CONTAINED HEREIN IS AND REMAINS THE SOLE PROPERTY OF, AND IS PROPRIETARY TO, CANIMEX INC. THE DRAWING AND/OR INFORMATION SHALL BE KEPT CONFIDENTIAL AND MAY NOT BE REPRODUCED, COPIED, MODIFIED, DISCLOSED, TRANSFERRED, OR MADE AVAILABLE TO OTHERS, EXCEPT WITH THE EXPRESS WRITTEN CONSENT OF CANIMEX INC. IT IS LOANED IN CONFIDENCE FOR MUTUAL ASSISTANCE PURPOSES ONLY. CANIMEX INC. MAY AT ANY TIME, COPY THE DRAWING AND/OR INFORMATION CONTAINED HEREIN.



- Cast iron housing (also available in ductile iron)
- Set-screw locking device (SB - UC) or eccentric collar (SA)



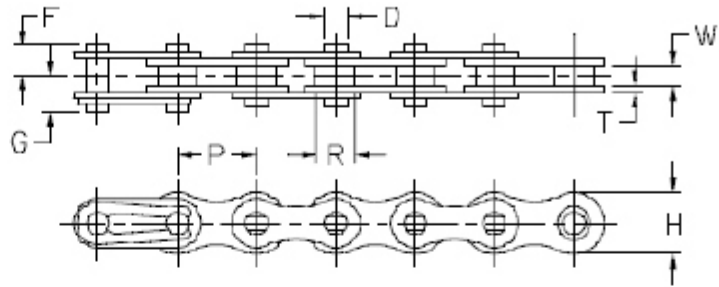
## UNIT DIMENSIONS

shaft dia.	inch / (millimeter)				Narrow series *		Normal series	Weight lbs (kg)
	A	E	L	S	SBF	SAF	UCF	
1/2	3 3/8 (86)	2 33/64 (64)	1 (25.4)	15/32 (12)	---	---	201-8	1.4 (0.65)
5/8					---	---	202-10	
3/4					204-12	204-12	204-12	
7/8	3 3/4 (95)	2 3/4 (70)	1 1/16 (27)	15/32 (12)	205-14	205-14	205-14	1.9 (0.85)
15/16					205-15	205-15	205-15	
1					205-16	205-16	205-16	
1 1/16	4 1/4 (108)	3 17/64 (83)	1 7/32 (31)	15/32 (12)	---	206-17	---	2.5 (1.5)
1 1/8					206-18	206-18	206-18	
1 3/16					206-19	206-19	206-19	
1 1/4					206-20	206-20	206-20	
1 1/4	4 19/32 (117)	3 5/8 (92)	1 11/32 (34)	35/64 (14)	207-20	207-20	207-20	3.5 (1.6)
1 5/16					207-21	207-21	207-21	
1 3/8					207-22	207-22	207-22	
1 7/16					207-23	207-23	207-23	
1 1/2	5 1/8 (130)	4 1/64 (102)	1 13/32 (36)	5/8 (16)	---	208-24	208-24	4.5 (2.05)
1 9/16					---	208-25	208-25	

\* Narrow series SBF/SAF, add the "G" suffix for lubrication (Ex. : SAF205-16 G)

For bearing dimensions, see pages 16 to 22 inclusively

# CHAIN DIMENSIONS

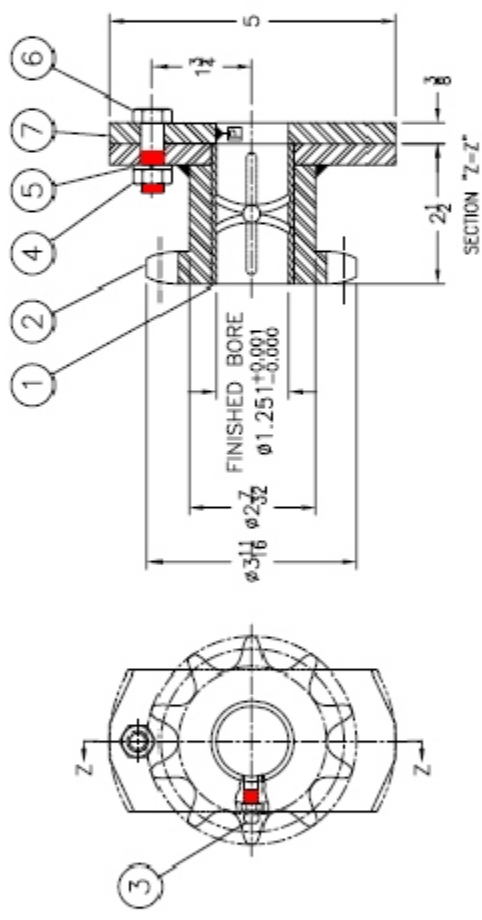


Roller chain:

Chain #	Pitch P	W (nom.)	Roller $\phi$ R (max.)	Plate		Pin			Average Ultimate Strength lbs./N
				Height H	Thickness T	Pin $\phi$ D (nom.)	Length F	Length G	
<b>25</b>	0.250 <i>6.35</i>	0.125 <i>3.18</i>	0.130 <i>3.30</i>	0.238 <i>6.03</i>	0.030 <i>0.76</i>	0.091 <i>2.30</i>	0.157 <i>4.00</i>	0.189 <i>4.80</i>	780 <i>3470</i>
<b>35</b>	0.375 <i>9.53</i>	0.188 <i>4.78</i>	0.200 <i>5.08</i>	0.356 <i>9.05</i>	0.050 <i>1.27</i>	0.141 <i>3.58</i>	0.246 <i>6.25</i>	0.274 <i>6.95</i>	1760 <i>7825</i>
<b>41</b>	0.500 <i>12.70</i>	0.250 <i>6.35</i>	0.306 <i>7.77</i>	0.475 <i>12.07</i>	0.050 <i>1.27</i>	0.141 <i>3.58</i>	0.264 <i>6.70</i>	0.322 <i>8.18</i>	1500 <i>6672</i>
<b>40</b>	0.500 <i>12.70</i>	0.313 <i>7.92</i>	0.312 <i>7.92</i>	0.475 <i>12.07</i>	0.060 <i>1.52</i>	0.156 <i>3.96</i>	0.328 <i>8.33</i>	0.373 <i>9.47</i>	3125 <i>13900</i>
<b>50</b>	0.625 <i>15.88</i>	0.375 <i>9.52</i>	0.400 <i>10.16</i>	0.594 <i>15.09</i>	0.080 <i>2.03</i>	0.200 <i>5.08</i>	0.406 <i>10.30</i>	0.480 <i>12.30</i>	4880 <i>21710</i>
<b>60</b>	0.750 <i>19.05</i>	0.500 <i>12.70</i>	0.469 <i>11.91</i>	0.713 <i>18.10</i>	0.094 <i>2.39</i>	0.234 <i>5.94</i>	0.498 <i>12.65</i>	0.587 <i>14.90</i>	7030 <i>31270</i>
<b>80</b>	1.000 <i>25.40</i>	0.625 <i>15.88</i>	0.625 <i>15.88</i>	0.950 <i>24.13</i>	0.125 <i>3.18</i>	0.312 <i>7.92</i>	0.650 <i>16.50</i>	0.770 <i>19.55</i>	12500 <i>55600</i>
<b>100</b>	1.250 <i>31.75</i>	0.750 <i>19.05</i>	0.750 <i>19.05</i>	1.188 <i>30.16</i>	0.156 <i>3.96</i>	0.375 <i>9.52</i>	0.850 <i>21.60</i>	0.882 <i>22.40</i>	19530 <i>86870</i>
<b>120</b>	1.500 <i>38.10</i>	1.000 <i>25.40</i>	0.875 <i>22.22</i>	1.425 <i>36.20</i>	0.188 <i>4.75</i>	0.438 <i>11.10</i>	0.980 <i>24.89</i>	1.138 <i>28.91</i>	28125 <i>125100</i>
<b>140</b>	1.750 <i>44.45</i>	1.000 <i>25.40</i>	1.000 <i>25.40</i>	1.663 <i>42.23</i>	0.219 <i>5.56</i>	0.500 <i>12.70</i>	1.059 <i>26.90</i>	1.248 <i>31.70</i>	38280 <i>170270</i>
<b>160</b>	2.000 <i>50.80</i>	1.250 <i>31.75</i>	1.125 <i>28.57</i>	1.900 <i>48.26</i>	0.250 <i>6.35</i>	0.563 <i>14.27</i>	1.254 <i>31.85</i>	1.451 <i>36.86</i>	50000 <i>222400</i>
<b>180</b>	2.250 <i>57.15</i>	1.406 <i>36.71</i>	1.406 <i>36.71</i>	2.138 <i>54.29</i>	0.281 <i>7.14</i>	0.688 <i>17.45</i>	1.404 <i>35.66</i>	1.671 <i>42.44</i>	63280 <i>281470</i>
<b>200</b>	2.500 <i>63.50</i>	1.500 <i>38.10</i>	1.563 <i>39.67</i>	2.375 <i>60.33</i>	0.313 <i>7.92</i>	0.781 <i>19.84</i>	1.535 <i>38.99</i>	1.764 <i>44.87</i>	78125 <i>347500</i>
<b>240</b>	3.000 <i>76.20</i>	1.875 <i>47.62</i>	1.875 <i>47.62</i>	2.850 <i>72.39</i>	0.375 <i>9.52</i>	0.938 <i>23.80</i>	1.886 <i>47.90</i>	2.185 <i>55.50</i>	112500 <i>504000</i>



ITEM	DESCRIPTION	QTY
1	CROOVED BRONZE BUSHING	1
2	SPROCKET MOUNTING	1
3	STD. STRAIGHT GREASE FITTING $\frac{1}{4}$ -28 UNF	1
4	STD. HEX. NUT $\frac{3}{8}$ -16 UNC	1
5	STD. LOCK WASHER $\frac{3}{8}$	1
6	HEX. BOLT $\frac{3}{8}$ -16 UNC	1
7	FLANGE	1



**APPROBATION / APPROVAL**  
 CIE/CO.: \_\_\_\_\_  
 SIGN: \_\_\_\_\_  
 DATE: \_\_\_\_\_

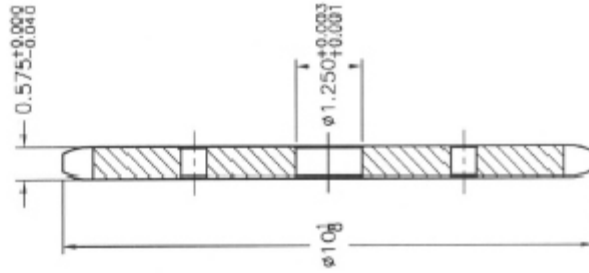
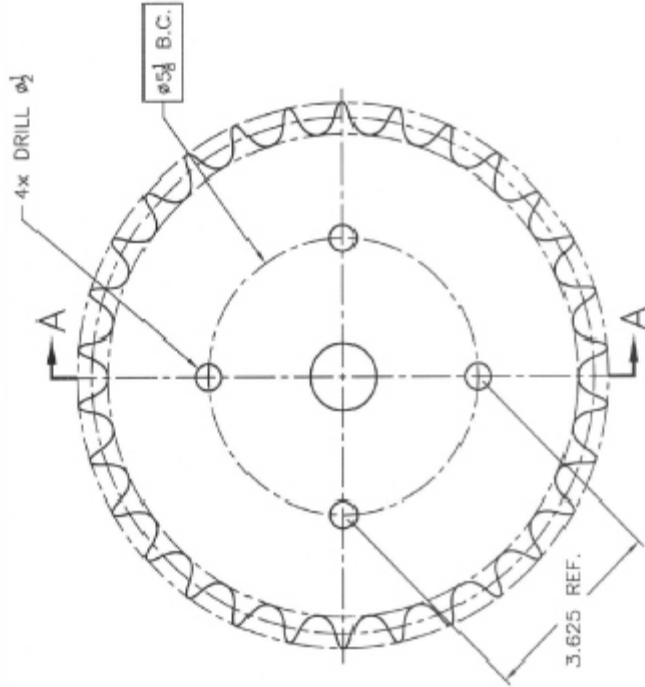
ROLLER CHAIN	
ANSI #	PITCH
80	1.000
	ROLLER #
	0.825
	SPROCKET
	STD (90-49)
TEETH	BORE
COMMERCIAL	FINISH
	SB

**CANIMEX**  
 CANIMEX, CANADA  
 TEL (514) 477-3300  
 FAX (514) 477-3308  
 ARTICLE CODE: 106110  
 DRAWN BY: T.W. DATE: 1993/05/05  
 CHECKED BY: P.T.

TITLE	MATERIAL	SCALE	DWG #	REV.	PAGE
80SB10H1:1/4 (FOR T27D)		1=2	P-3530	5	2/2

NOTES:  
 -ALL DIMENSIONS ARE IN INCHES.  
 FOR CUSTOMER'S USE ONLY

CONFIDENTIAL: THIS DRAWING AND/OR THE INFORMATION CONTAINED HEREIN IS AND REMAINS THE SOLE PROPERTY OF CANIMEX INC. THIS DRAWING AND/OR INFORMATION SHALL BE KEPT CONFIDENTIAL AND MAY NOT BE REPRODUCED, COPIED, MODIFIED, DISCLOSED, TRANSMITTED OR MADE AVAILABLE TO OTHERS EXCEPT WITH THE EXPRESS WRITTEN CONSENT OF CANIMEX INC. IT IS LOANED IN CONFERENCE FOR MUTUAL ASSISTANCE PURPOSES ONLY. CANIMEX INC. MAY AT ANY TIME, MODIFY THE DRAWING AND/OR INFORMATION CONTAINED HEREIN.



SECTION "A-A"

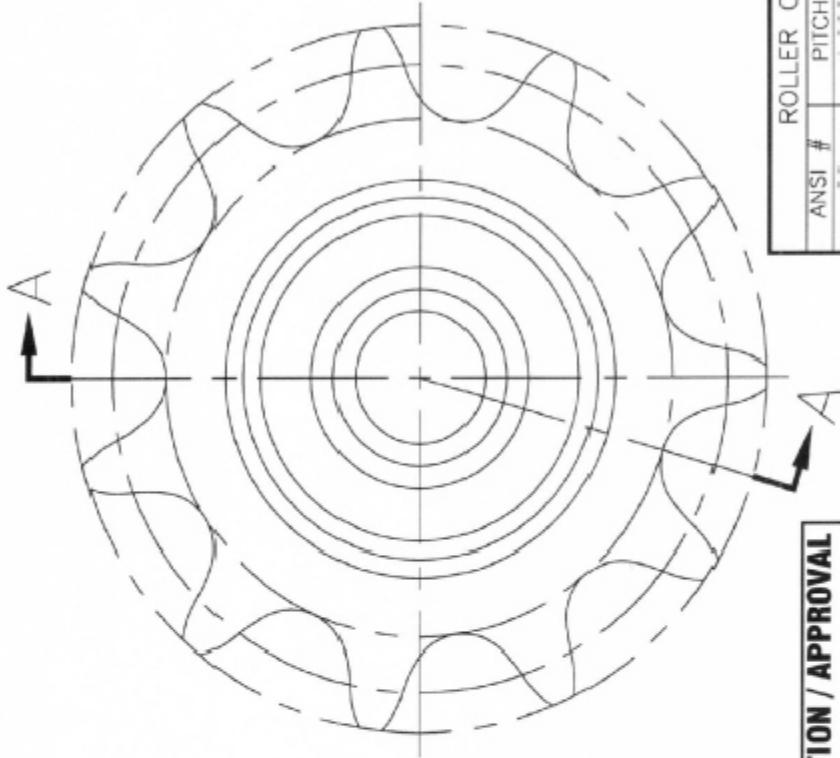
**APPROBATION / APPROVAL**  
 CIE/CO.: \_\_\_\_\_  
 SIGN.: \_\_\_\_\_  
 DATE: \_\_\_\_\_

ROLLER CHAIN	
ANSI / FITCH	ROLLER #
B0	1.000
SPROCKET	STD   SPE
TEETH	BORE   TYPE
COMMERCIAL	FINISH
	A

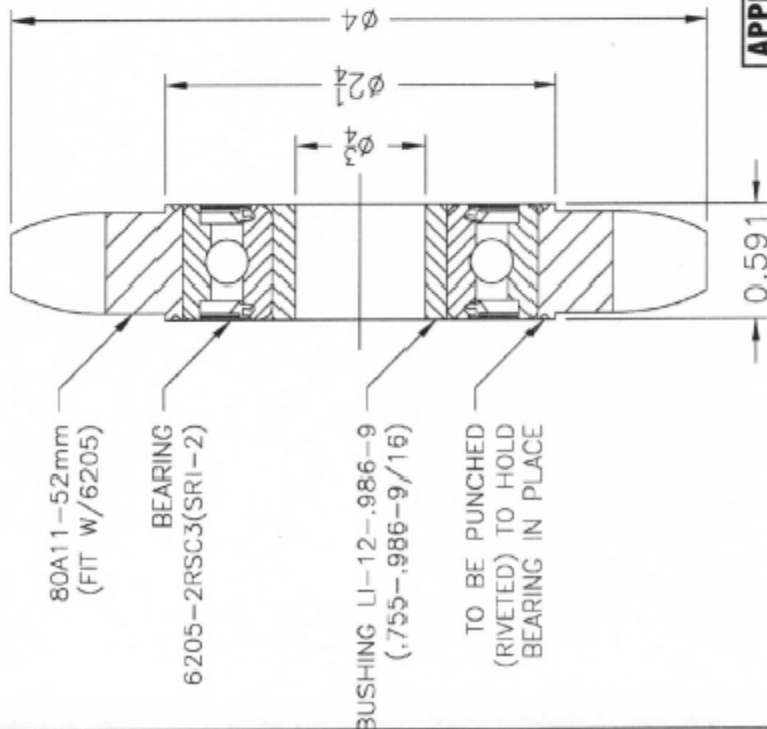
		TITLE 80A30-1:1/4(W/4 HOLES 1/2)	
MATERIAL SAE 1020		FINISH BLACK OXIDE	
SCALE 1=2		DWG # P-3531	
DATE 1993/05/06		REV.   PAGE 6   2/2	

CONFIDENTIAL - THIS DRAWING AND THE INFORMATION CONTAINED HEREIN IS THE PROPERTY OF CAMDEX INC. AND IS PROPRIETARY TO CAMDEX INC. THIS DRAWING AND THE INFORMATION CONTAINED HEREIN IS NOT TO BE REPRODUCED, COPIED, OR USED IN ANY MANNER WITHOUT THE WRITTEN CONSENT OF CAMDEX INC. IT IS LOANED TO CUSTOMER FOR CUSTOMER'S USE ONLY. CAMDEX INC. MAY AT ANY TIME, MODIFY THIS DRAWING AND/OR INFORMATION CONTAINED HEREIN.

**NOTES:**  
 --TO BE USED WITH 4 BOLTS ø1/2  
 --ALL DIMENSIONS ARE IN INCHES.  
 FOR CUSTOMER'S USE ONLY



ROLLER CHAIN			
ANSI #	PITCH	ROLLER Ø	
80	1.000	0.625	
SPROCKET		STD	006Q
TEETH	BORE	TYPE	
COMMERCIAL	FINISH		A



**APPROBATION / APPROVAL**  
 CIE/CO.: \_\_\_\_\_  
 SIGN: \_\_\_\_\_  
 DATE: \_\_\_\_\_

SECTION "A-A"

TITLE		S180A11-3/4(W/6205-2RS)	
MATERIAL	FINISH	SCALE	DWG #
AISI 1045	BLACK OXIDE	FULL	P-13045
DATE: 2006-06-19	REV.	REV.	PAGE
	1	1	3/3

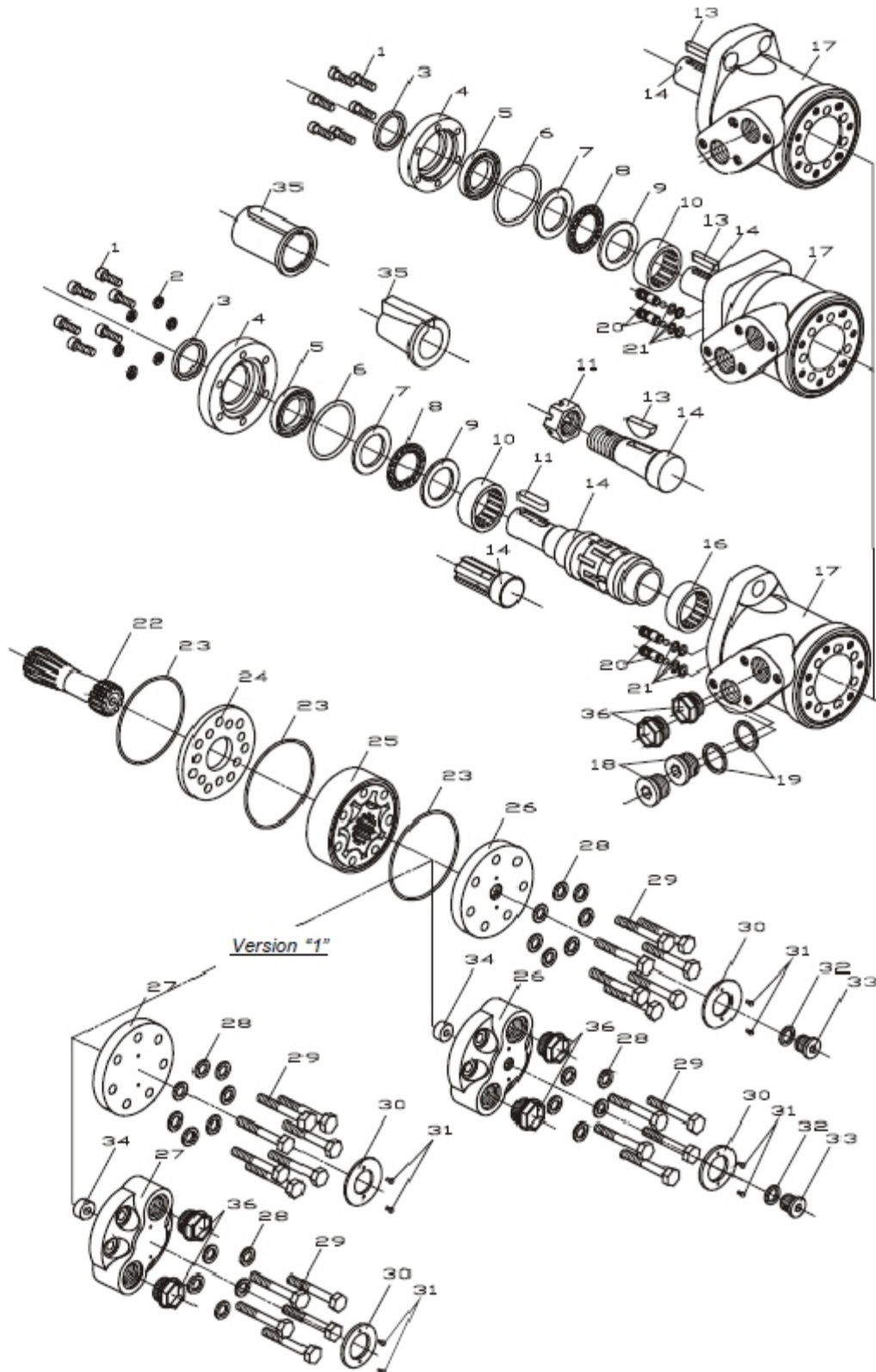
**CANIMEX**  
 DRUMMONDVILLE, QUEBEC, CANADA  
 TEL: (819) 477-1335  
 FAX: (819) 477-0306

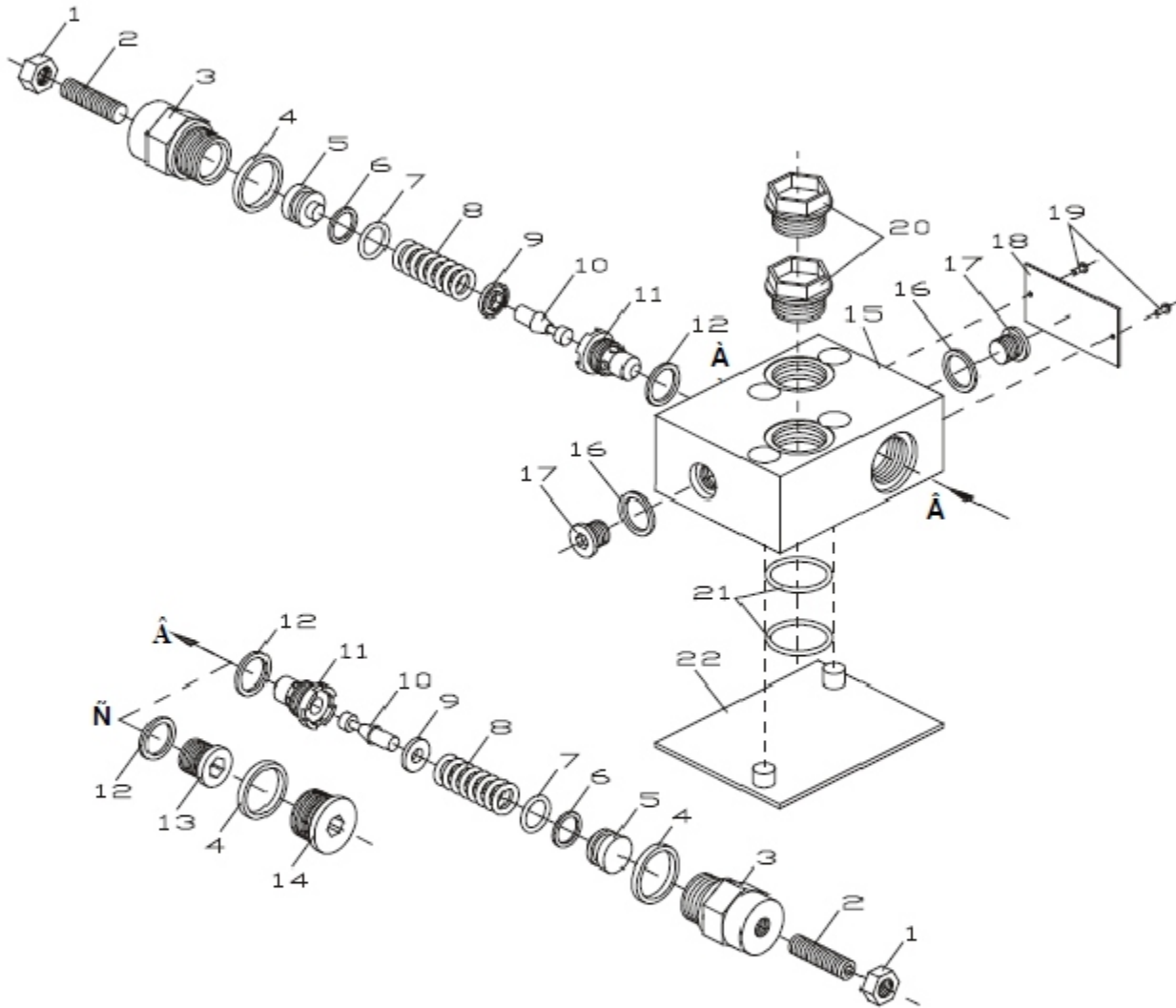
ARTICLE CODE: 175620  
 DRAWN BY: P.T. CHECK BY: J.F.P.  
 APP. BY: J.F.P.

NOTES:  
 -ALL DIMENSIONS ARE IN INCHES EXCEPT DIMENSIONS INSIDE ( ) ARE IN MILLIMETRES.  
**FOR CUSTOMER'S USE ONLY**

CONFIDENTIAL: THIS DRAWING AND/OR THE INFORMATION CONTAINED HEREIN IS AND REMAINS THE SOLE PROPERTY OF, AND IS PROPRIETARY TO, CANIMEX INC. THIS DRAWING AND/OR INFORMATION SHALL BE KEPT CONFIDENTIAL AND MAY NOT BE REPRODUCED, COPIED, MODIFIED, DISCLOSED, TRANSFERRED, OR MADE AVAILABLE TO OTHERS, EXCEPT WITH THE EXPRESS WRITTEN CONSENT OF CANIMEX INC. IT IS LOANED IN CONFIDENCE FOR MUTUAL ASSISTANCE PURPOSES ONLY. CANIMEX INC. MAY AT ANY TIME, MODIFY THE DRAWING AND/OR INFORMATION CONTAINED HEREIN.







**MANUFACTURED BY:**



**Kensington Metal Products, Inc.  
PO Box 879  
18 Gerald McCarville Drive  
Kensington, PE  
C0B 1M0, Canada**

**Tel: (902) 836-8200  
Fax: (902) 836-8202**