



# OCE CABINETS AND CASEWORK

## Discover Our Quality

Each day OCE craftsmen diligently manufacture fine cabinetry for use by Oregon's contractors and public agencies. OCE's experienced cabinetmakers use only the finest materials, and combine traditional woodworking skills with advanced technology. The result is high-quality cabinetry with an impressive range of styles, finishes, colors, and woods.

At OCE, we realize that construction projects have different design needs. That's why we build cabinetry according to your specifications to get exactly what you want. Your design options are virtually limitless as you choose the style, wood, and hardware that fits your project needs.



## Discover Our Finish

Your OCE cabinetry is meticulously finished with the same care we give to each of our furniture products. Each of our multi-step finishes is designed to highlight the beauty of the wood and protect it for a lifetime of durability.



## Discover Our Service

Need more information? Your OCE sales representative will be happy to answer any of your questions about our fine cabinetry and provide you with references. Our contact information is listed on the back cover of this publication, and we look forward to assisting you on your next project.

# OCE CASEWORK CONSTRUCTION MATERIALS FOR ARCHITECTURAL CABINETS/CASEWORK

## **PART 1: SECTION INCLUDES:**

Shop fabricated institutional casework including base, full height, and wall mounted cabinets, countertops, wardrobes and other similar units.

### **System Description:**

- ▶ Casework modules of reveal overlay design with continuous countertops.
- ▶ Exposed cabinet exterior finished with high-pressure plastic laminate.
- ▶ Exposed cabinet interior overlaid with thermally fused melamine.
- ▶ Edges of case bodies, doors, drawers, and shelves finished with color coordinated PVC protective edge.
- ▶ Hardware of institutional type and quality.

### **Quality Standards:**

Except as modified by customer request, material and workmanship grade meet or exceeds the Quality Standards of Architectural Woodwork Institute, current edition, published by Architectural Woodwork Institute.

### **Delivery, Storage and Handling:**

Advantages of using OCE are:

- ▶ Ability to store finished products in the event that your construction schedule is delayed.
- ▶ Storage in climate controlled atmosphere.
- ▶ Delivery and placement of finished casework in rooms.
- ▶ Removal of packaging material off site.

### **Warranty Information:**

- ▶ OCE provides limited warranties on all its products. Warranty specifics are found at [oce.oregon.gov/content/FAQs.asp](https://oce.oregon.gov/content/FAQs.asp)

## **PART 2: PRODUCTS:**

### **Manufacturer:**

All products are to be supplied by Oregon Correctional Enterprises under direct contract with Contractor/Owner. Contractor/Owner to install all Cabinets and Casework.

### **Lumber:**

- ▶ Concealed: Poplar or Alder, vertical grain.
- ▶ Exposed: Casework Contractors choice of veneers and hardwoods.

### **Plywood Custom Grade:**

- ▶ Case: Roseburg Forest Products ¾" thermally fused melamine sides, bottoms, shelving, doors and stretchers. Product Standard. (Marine grade) exterior type where exposed to moisture and use for around sinks.
- ▶ Drawer Boxes: ½" 9 ply birch plywood drawers with miter lock joints.

### **Particle Board Industrial Grade:**

- ▶ Case: Roseburg Forest Products ¾" thermally fused melamine sides, bottoms, shelving, doors and stretchers. Product Standard (marine grade) exterior type where exposed to moisture and use for around sinks.
- ▶ Plain Particle Board: Conforms to ANSI 208.1 Grade M2, 47 pcf minimum density.

### **Plastic Laminate (HPDL):**

- ▶ Typically Customer Specified.
- ▶ Manufacturing Standard: Conforms to NEMA Standard LD-3.
- ▶ Exposed Surfaces: Post-Forming Grade: 0.042 inch material thickness.
- ▶ Color and Pattern: As specified by Contractor/Owner.
- ▶ Locations noted on interior elevations.

### **Hardware:**

- ▶ Hinges: Salice. 200 Series. 120 degrees.
- ▶ Magnetic Catches: EPCO 1000LS.
- ▶ Adjustable Shelf Hardware: 5mm Steel (Brass).
- ▶ Door and Drawer Pulls: Customer Select OCE Stock.
- ▶ Drawer Slides: 100 lb. Full Extension Onward Ball Bearing Drawer Guide.
- ▶ Casework Locks: Timberline. (Specify keyed separately or alike).
- ▶ Door/Drawer Bumpers: Hemisphere .335" Dia. X .085" Height, Clear.
- ▶ Integral Toe.

## **PART 3: FABRICATION:**

### **General:**

- ▶ Conform to AWI 400B Standards for laminate and/or veneer clad cabinets, premium grade.
- ▶ Construction: Overlay reveal, unless indicated otherwise.
- ▶ Surfaces: Veneer or laminated plastic.
- ▶ All shelves adjustable unless otherwise shown.
- ▶ Verify dimensions of sinks and other items to be built into cases and counters.
- ▶ Use screws and bolts in addition to adhesive where required for strength and rigidity.
- ▶ Install finish hardware specified herein at factory.

### **Materials, Unless Specifically Noted Otherwise:**

- ▶ Bases: Exterior grade  $\frac{3}{4}$  inch thermally fused melamine plywood or particle board with .050 plastic laminate, backed with .0320 balancing sheet.
- ▶ Exposed materials: Wood veneer and/or HPDL clad plywood or particle board.
- ▶ Concealed materials: Softwood.
- ▶ Casework bottoms, Ends, and Vertical Standards:  $\frac{3}{4}$  inch thick plywood and/or particle board.
- ▶ Back and Side Splash:  $\frac{3}{4}$  inch particle board with .050 plastic laminate.
- ▶ Fixed Shelving:  $\frac{3}{4}$  inch thermally fused melamine plywood and/or particle board.
- ▶ Adjustable Shelving:  $\frac{3}{4}$  inch thermally fused melamine plywood and/or particle board.
- ▶ Adjustable Shelf Hardware: Provide shelf pin holes at 32mm centers to within 6 inches of top and bottom of space where adjustable shelves are shown.

### **Casework Backs:**

- ▶ Concealed Base Cabinets:  $\frac{1}{4}$ " prefinished hardboard.
- ▶ Concealed Wall Cabinets:  $\frac{1}{4}$ " prefinished hardboard.
- ▶ Exposed Backs:  $\frac{3}{4}$ " thermally fused melamine plywood.

### **Drawers:**

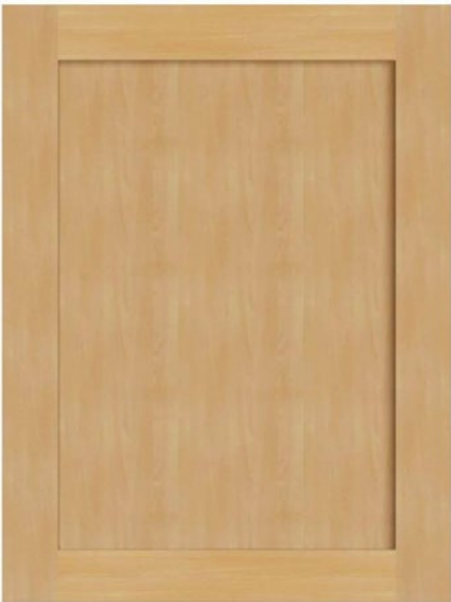
- ▶ Front:  $\frac{3}{4}$  inch thermally fused melamine plywood and/or particle board.
- ▶ Sub Fronts:  $\frac{1}{2}$ " Thick Prefinished plywood.
- ▶ Sides:  $\frac{1}{2}$ " Thick Prefinished plywood.
- ▶ Backs:  $\frac{1}{2}$ " Thick Prefinished plywood.
- ▶ Bottoms:  $\frac{1}{2}$ " Thick Prefinished plywood.

# PART 4: DETAIL AND STYLE INFORMATION:

## Shaker Inset Panel:

- ▶ Door Thickness . . . . . 3/4"
- ▶ Panel Thickness. . . . . 1/4"
- ▶ Stile Width . . . . . 2-1/4"
- ▶ Rail Width . . . . . 2-1/4"
- ▶ Minimum Door Width . . . . . 6"
- ▶ Minimum Door Height . . . . . 6"
- ▶ Mid-Rail Required . . . . . Over 48" High

Shaker Inset Door Panel –



Drawer Front Options –



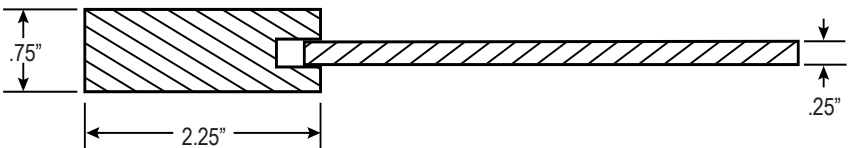
Shaker Inset Drawer Panel



Shaker Solid Drawer Panel

### Specifications Shown:

- ▶ OP-01 Outside Edge Profile
- ▶ PP-01 Panel Profile
- ▶ IP-01 Inside Edge Profile



## Crescent Raised Panel:

- ▶ Door Thickness . . . . . 3/4"
- ▶ Panel Thickness. . . . . 5/8"
- ▶ Stile Width . . . . . 2-1/4"
- ▶ Rail Width . . . . . 2-1/4"
- ▶ Minimum Door Width . . . . . 8"
- ▶ Minimum Door Height . . . . . 8"
- ▶ Mid-Rail Required . . . . . Over 48" High

Crescent Raised Door Panel –



Drawer Front Options –



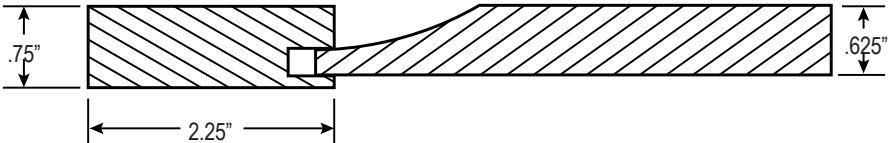
Crescent Raised Drawer Panel



Crescent Solid Drawer Panel

Specifications Shown:

- ▶ OP-01 Outside Edge Profile
- ▶ PP-01 Panel Profile
- ▶ IP-02 Inside Edge Profile



## Laminated Slab Door:

- ▶ Door Thickness . . . . .  $\frac{3}{4}$ "
- ▶ Panel Thickness. . . . . N/A
- ▶ Stile Width . . . . . N/A
- ▶ Rail Width . . . . . N/A
- ▶ Minimum Door Width . . . . . 6"
- ▶ Minimum Door Height . . . . . 6"
- ▶ Mid-Rail Required . . . . . Over 48" High

Laminated Slab Door Panel –



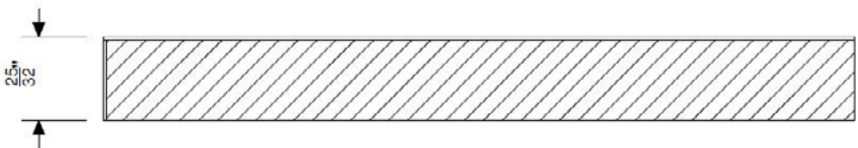
Drawer Front –



Laminated Slab Drawer Panel

### Specifications Shown:

- ▶ OPTION 1: 3MM PVC Banding
- ▶ OPTION 2: 1MM PVC Banding





## Veneered Slab Door:

- ▶ Door Thickness . . . . .  $\frac{3}{4}$ "
- ▶ Panel Thickness. . . . . N/A
- ▶ Stile Width . . . . . N/A
- ▶ Rail Width . . . . . N/A
- ▶ Minimum Door Width . . . . . 6"
- ▶ Minimum Door Height . . . . . 6"
- ▶ Mid-Rail Required . . . . . Over 48" High

Veneered Slab Door Panel –



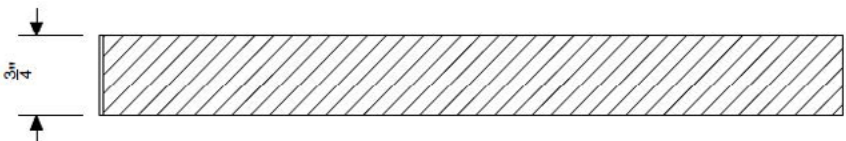
Drawer Front –



Veneered Slab Drawer Panel

### Specifications Shown:

- ▶ OPTION 1:  $\frac{1}{8}$ " Veneered Banding
- ▶ OPTION 2: Veneer Tape Banding



# **PART 5: STANDARD LAMINATE AND SIZE OPTIONS:**

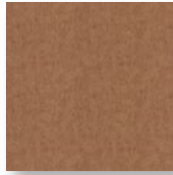
## **Laminate Standard Colors:**



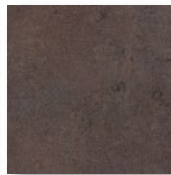
Navy Legacy  
4651-60



Rustic Slate  
4888-38



Antique Brush  
4823-60



Sable Soapstone  
4883-38



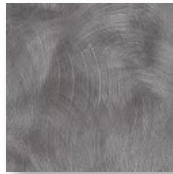
Evening Tigris  
4674-60



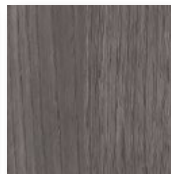
Pearl Soapstone  
4886-38



Oiled Soapstone  
4882-38



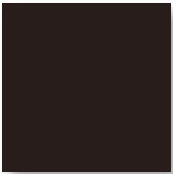
Boardwalk Oak  
7983-38



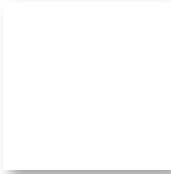
Sterling Ash  
7995-38



Pewter Brush  
4779-60



Black-Matte  
1595-60



Designer White  
D354-60



Fusion Maple  
7909-60

## **Standard Casework Sizes:**

- ▶ Backsplash Height . . . . . 4" or 6"
- ▶ Butcher Block . . . . . 1 ½" or 2" Thick Maple
- ▶ Stainless Countertop . . . . . 16 gauge 2B Covered Stainless
- ▶ Cabinet Sizes . . . . . Industry Standard Cabinet Sizing:  
3 inch increments

## **PART 6: HARDWARE OPTIONS:**

Available in a variety of sleek styles and finishes to match your needs.



Silver Nickel Pull Bar  
FFPIP1096-SN



Satin Nickel Flat Knob  
FF9558-BNI



Satin Nickel Pull Cup\*  
FF53010-G10



Black Pull Arch  
FF9500-DBK



Flat Black Knob  
FF53005-FB



Flat Black Pull Cup\*  
4823-60



Satin Nickel Pull Arch  
FF9500-BNI



Satin Nickel Rounded Knob  
FF9663-BNI



Satin Nickel Pull Cup  
FF9670-BNI



Oil-Rubbed Bronze Pull Arch  
FF53003-ORB



Satin Nickel Ridged Knob  
FF9653-BSN



Bronze Pull Cup  
FF9670-EOA



Brushed Satin Nickel Pull Arch  
FF9660-BSN



Weathered Iron Knob  
FF9654-AIM-D



Antique Iron Pull Cup  
FF9670-AIM



Bronze Pull Arch  
FF9660-EOA



Oil-Rubbed Bronze Flat Knob  
FF53005-ORB



Wood Pull  
(stained to match)  
FFBELL-PULL



Brushed Silver Pull  
FFPULLCDH4



Oil-Rubbed Bronze Rounded Knob  
FF9430-OA

*\* Not Available for Pedestals with Writing Boards.*







## Work Skills

In OCE programs throughout Oregon's prison system, adults in custody (AICs) are gaining work experience and learning new job skills in preparation for eventual release. This is important as over 95% of Oregon's AICs will eventually return to their communities. At OCE, our work goes beyond providing our customers with great products and services. We strive daily to equip incarcerated men and women with the soft and hard skills needed to achieve better outcomes in the community.



## Training

OCE's programs provide relevant certification and work skills training to prepare AICs for private sector experiences once they are released. OCE works tirelessly to align our training programs now and in the future with job trends in Oregon and nationwide. This ensures the training AICs receive is relevant to the job market upon their reintegration into the workforce, helping them to obtain livable-wage employment.



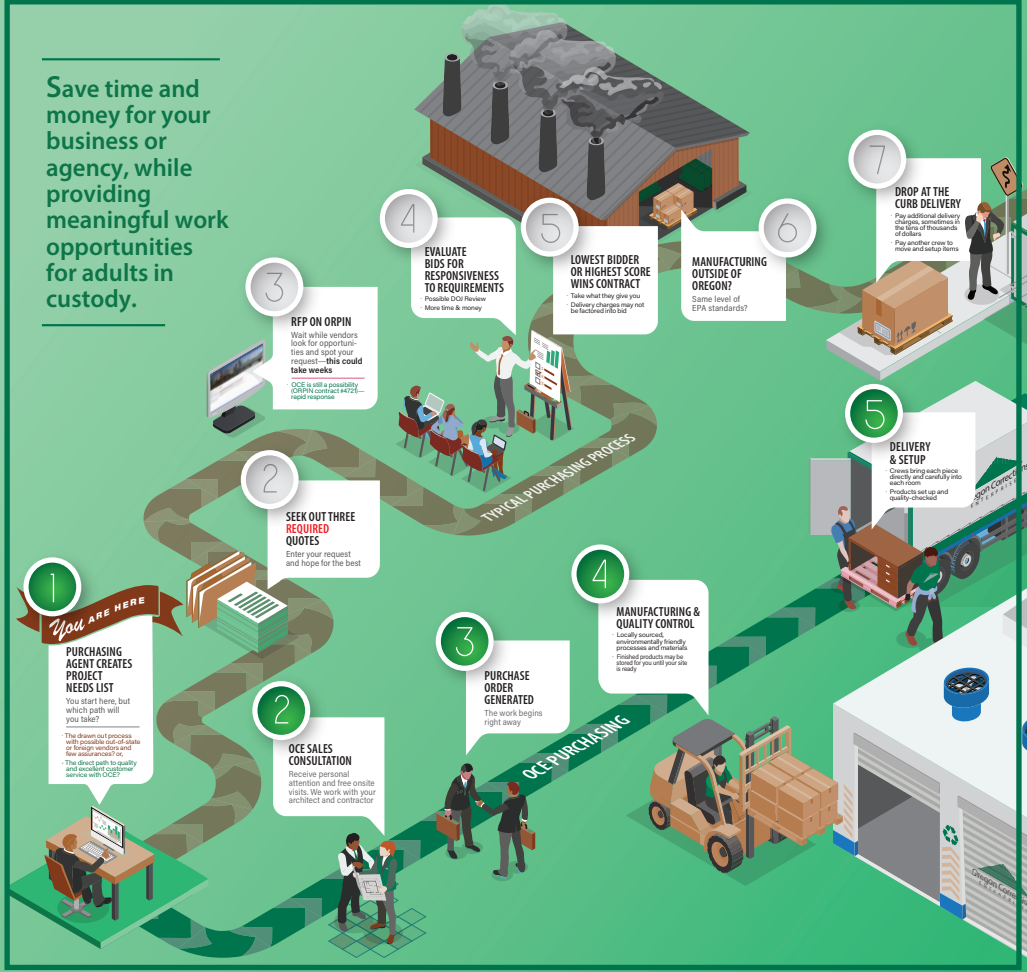
## Opportunity

OCE is a vehicle to second chances for people like you and me who have feelings, ambitions, and dreams of a better life. Through our manufacturing, customer service, labor, and technology training programs, as well as BOLI welding and janitorial certifications, OCE is dedicated to providing programs that give AICs opportunities that will translate into better lives.

*We thank you for your interest in our programs. Through your purchases you are helping to effect positive changes in the lives of these individuals.*

# SKIP THE BIDDING PROCESS WITH OCE

Save time and money for your business or agency, while providing meaningful work opportunities for adults in custody.



**OREGON CORRECTIONS ENTERPRISES** is listed as a priority vendor by the Department of Administrative Services (DAS) on the Buy Decision Procurement Matrix. By purchasing from OCE, you can skip the bidding process, provide valuable work skills training opportunities for adults in custody, and save your agency money.







**THE MISSION OF OREGON CORRECTIONS ENTERPRISES**, in partnership with the Department of Corrections, is to promote public safety by providing adults in custody with work and training opportunities in a self-sustaining organization. Our programs include the manufacture of high-quality products for Oregon's prisons, state and local government entities, as well as tribal and non-profit organizations.



3691 State Street  
Salem, OR 97301

Phone 503.428.5500  
Toll free 1.800.776.7712  
Fax 503.363.4170  
info@oce.oregon.gov

or visit us online at [oce.oregon.gov](http://oce.oregon.gov)