

PON PC Manual
Front
4/4 48 pages
including cover

TABLE OF CONTENTS

GETTING STARTED1
CONTROLS3
THE MATRIX: PATH OF NEO™4
GAME MENUS5
MOVING AROUND8
HEALTH11
HAND-TO-HAND & MELEE COMBAT12
TARGETING16
GUNS – LOTS OF GUNS17
GRENADES19
INVENTORY MANAGER20
FOCUS21
THE PATH OF THE ONE23
ALLIES & NPCs25
ENEMIES26
STRATEGIES & TACTICS28
QUICK REFERENCE30
CREDITS31
ATARI WEB SITES40
TECHNICAL SUPPORT41
END-USER LICENSE AGREEMENT43

GETTING STARTED

The ReadMe File

The *Matrix: Path of Neo* DVD-ROM game has a ReadMe file where you can view both the License Agreement and updated information about the game. We strongly encourage you to take the time to read this file in order to get the benefit of changes made after this manual went to print.

To view this file, double-click on it in the The Matrix: Path of Neo directory found on your hard drive (usually C:\Program Files\Atari\The Matrix Path of Neo). You can also view the ReadMe file by first clicking on the Start button on your Windows® taskbar, then on Programs, then on Atari, then on The Matrix: Path of Neo, then on the ReadMe file.

System Requirements

Operating System	Windows® 2000 / XP
Processor	Pentium 4 1.8 GHz or AMD Athlon 1.8 GHz or higher
Memory	512 MB RAM
Hard Disk Space	1 GB free
DVD-ROM Drive	6X speed or faster
Video	Nvidia GeForce FX 5200 or ATI Radeon 8500 or greater*
Sound	DirectX® version 9.0c-compatible sound card
DirectX®	DirectX® version 9.0c (included) or higher

**Hardware T&L video cards that do not support shaders, such as the GeForce 4 MX or Intel Extreme Graphics family, are not supported*

GETTING STARTED

Setup and Installation

1. Start Windows® 2000 / XP.
2. Insert *The Matrix: Path of Neo* DVD-ROM game disc into your DVD-ROM drive.
3. If AutoPlay is enabled, a title screen should appear. If AutoPlay is not enabled, or the installation does not start automatically, click on the Start button on your Windows® taskbar, then on Run. Type D:\Setup and click on OK. NOTE: If your DVD-ROM drive is assigned to a letter other than D, substitute that letter.
4. Follow the remainder of the on-screen instructions to finish installing *The Matrix: Path of Neo* DVD-ROM game.
5. Once installation is complete, click on the Start button on the Windows® taskbar and choose Programs/Atari/The Matrix Path of Neo/The Matrix Path of Neo to start the game.

Note: You must have the *The Matrix: Path of Neo* Play Disc in your DVD-ROM drive to play.

Installation of DirectX

The Matrix: Path of Neo DVD-ROM requires DirectX® 9.0c or higher in order to run. If you do not have DirectX® 9.0c or higher installed on your computer, click "Yes" when asked if you would like to install it.

Saving and Loading

At specific points throughout the game, you will be prompted to save your progress. Choose an empty game slot or overwrite an existing game (if you do this, the game previously saved in that game slot will be lost). Your position in the game is indicated in the saved game slot.

To load a saved game, select Load and choose your saved game. When choosing a game to load, you may start from any point at which you previously saved.

CONTROLS

Mouse	Look up / down / left / right
W	Move forward
S	Move backward
A	Strafe left
D	Strafe right
Space	Jump <i>Tap twice for Double Jump</i>
F	Toggle in-hand weapon
LMB or Numpad 4	Strike / Draw and fire weapon
RMB or Numpad 5	Special Attack <i>Press and hold for Killing Blow</i>
Ctrl or Numpad 6	Evade
Shift or Numpad Enter	Focus
Q	Weapon strip
T	Throw melee weapon
Tab	Action / Link-Up <i>Specific action is context-sensitive. Use this control to open doors, push buttons, take cover, etc.</i>
3	Inventory left
4	Inventory right
2	Swap Armed Weapon <i>If inventory full, swaps currently selected weapon with new weapon on the ground.</i>
Numpad 7 / 9	Rotate camera
Numpad 8 / 2	Pitch Camera
Mouse Wheel or Numpad [+] / [-]	Camera zoom in / out
Numpad [*]	Camera zoom reset
C	Code Vision (<i>unlockable</i>)
Esc	Pause Game / Access Pause Menu <i>Press again to return to game</i>

The above is the default mouse/keyboard configuration. You can customize controls via the Options Menu.

THE MATRIX: PATH OF NEO

Can you handle the challenges Neo faces on his path... the path of the One?

Can you avoid the Agents who come looking for Thomas Anderson, the hacker?

Can you handle the training programs and impress Morpheus with your martial arts skills?

Can you dodge bullets? When the time comes, you won't have to.

Can you rescue Morpheus in time to save Zion?

Can you defeat Agent Smith and bring an end to the war?

From the moment the game starts, how the story plays out is up to you. Where Neo succeeded, you must succeed. You cannot fall short, for if one fails, all fail, and Zion will crumble.

Can you do it?



GAME MENUS

Main Menu

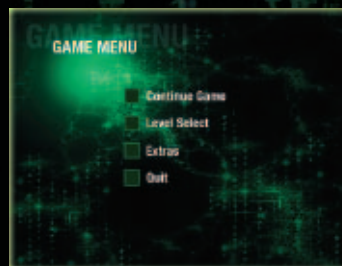
Start Game – Choose an empty file slot to begin a new game.

Load Game – Load a previously saved game.

Options – Open the Options Menu.



Game Menu



Once you have started a new game or loaded a previously saved game, you can access the Game Menu. This menu can also be accessed at any time from the Pause Menu while playing *The Matrix: Path of Neo*.

Continue Game – Resume the game at the start of the last previously saved level.

Level Select – Replay a previously saved level.

Extras – Open the Extras Menu.

Quit – Quit the Game Menu and open the Main Menu.

GAME MENUS

Options Menu



The Options Menu allows you to customize several game settings. You can access the Options Menu via the Main Menu and the Pause Menu. For updated information about game options, please see the ReadMe file in *The Matrix: Path of Neo* directory found on your hard drive (usually

C:\Program Files\Atari\The Matrix Path of Neo).

Controls

Adjust the game's mouse/keyboard or joypad controls.

Audio

Adjust the game's audio settings for your speaker/audio configuration.

Video

Adjust the game's video settings for your monitor/video configuration.

Languages

Adjust the game's language and subtitle settings.

Videos and Cinematics

The Matrix: Path of Neo tells its story with live-action film footage, in-game cinematic scenes and gameplay. Clues and instructions appear in these cinematic scenes.

Extras Menu



The rabbit hole has plenty of surprises. The Extras Menu is accessed via the Game Menu, and offers a variety of extra content.

Movies – Play the game's movie clips, featuring footage from the *Matrix* trilogy and the *Animatrix*, as well as additional surprises.

Special Combos – View some of the game's most effective fighting combos. It's not a complete list – there are plenty of secrets that you can discover while playing.

Media Viewer – View additional artwork from the game and its development process.

Cheats – Toggle and manage the game's unlockable cheats.

The Making of... – Go behind the scenes and get a special glimpse at the making of the game, with movies and special features.

Pause Menu / Objectives

At any time during the game you can press **Escape** to open the Pause Menu.

Resume Game – Resume playing.

Objectives – Review your current mission objectives.

Options – Open the Options Menu (see Options Menu on page 6).

Retry – Restart at the last saved checkpoint.

Exit to Menu – Exit the current game and return to Game Menu.



MOVING AROUND

Heads-Up Display



The **Player Health** meter represents Neo's current health level (see Health on page 11).

The **Focus** meter indicates Neo's current Focus level. Focus allows Neo to bend the rules of the Matrix (see Focus on page 21).

The **Ally Health** meter represents the current health status of Trinity and other Rebels who fight alongside Neo (see Allies & NPCs on page 25).

The **Enemy Health** meter shows the current enemy's health. During special missions, where time is of the essence, the **Ally Status** display monitors the status of allies such as Morpheus.

The **Inventory Manager** allows you to manage and select firearms, melee weapons, grenades and other items. The number beneath the weapon icon represents a firearm's ammo or a melee weapon's decay status (see Inventory Manager on page 20).

Movement

The mouse and keyboard combinations control direction and speed for both walking and running. Use the Strafe keys ([A] and [D]) to sidestep left and right. An effective tactic is to combine mouse and Strafe keys to quickly circle around your opponents and keep them off-balance.

To sneak up on someone, walk slowly – enemies can hear your footsteps.

MOVING AROUND

Camera Controls

The mouse and keyboard combinations also control your view of the action. The camera automatically follows Neo throughout the game, but you can also manually control the camera in combat by using the mouse and keyboard controls to position the camera to get a better view of your surroundings.

Jumping and Climbing

Press Jump [Space] to jump over various objects. As the game progresses, you'll unlock the ability to perform a Double Jump – press [Space] at the peak of a jump to perform a Double Jump that carries Neo even higher.

Neo will automatically step over low objects. To climb onto taller objects or to reach ledges, move or jump toward the object to perform a ledge hang, and move forward [W] to climb up. When hanging from a ledge, you can also use the [A] and [D] keys to shimmy along its edge.

To climb ladders, move to the bottom of the ladder,



look up with the mouse and move forward [W] and back [S] to climb up and down. Press Jump [Space] to quickly slide down a ladder

Running before a jump will increase the length of the jump, as does Focus.

Jumping from behind cover will send the character into a dive-roll.



MOVING AROUND

Taking Cover / Using Link-Ups

When near an obstacle, such as a wall or large object, move close to it and press Action [Tab] – Neo will link up with the object and use it as cover, turning his back and pressing against the object. To break the link, move away from the object with the [W] or [S] keys.



When using an object as cover, strafe left [A] or right [D] to move or creep alongside it. If the object is low, such as a crate or table, Neo will automatically drop down and move in a crouch when linked with the object.

When linked up with an object, you can peer around the corner to locate and attack enemies. Move left [A] or right [D] to move to the corner of the object, then use the keys to peer around the object. Neo will lean out and get a better view.

To shoot at enemies from this position, press Fire [Left Mouse Button] to step around the corner and lock onto an enemy. Release Fire [LMB] to drop back to cover. You can perform the same actions to fire over objects from a crouched position.

To jump out and surprise enemies from this position, lean out, press Jump [Space] and start blasting.

Opening Doors & Using Objects

To open doors and use objects within the environment, move Neo near the object with the movement keys and press Action [Tab] to perform the action.

The exact action is context-sensitive -- if you are near a door, Neo will open it; if you are near a button or control panel, Neo will operate it.



HEALTH

Neo can dish out a lot of damage, and can take a lot of damage, as well. But as the Agents are well aware, Neo is still “only human,” and can be killed in combat if not careful.



When Neo has been out of combat for a few seconds, his Health meter automatically regenerates up to its current maximum level. If you can get Neo out of a jam and find a place to take cover, you can replenish his health and get back into the fight.

However, if Neo takes too much damage too quickly, his maximum level of health can drop fast, leaving him more vulnerable than before.

You will find Health and Focus Packs in various locations throughout the game. Health Packs can both replenish Neo's Health meter and restore his maximum health level. Focus Packs replenish Neo's Focus meter.

HAND-TO-HAND & MELEE COMBAT

After going through extensive training and download sessions aboard the Nebuchadnezzar, Neo becomes a master of several styles of martial arts. Neo is a one-man army, able to take on an entire SWAT team. When he becomes the One, his combat skills become even more amazing, as Neo is able to bend the rules of the Matrix to the breaking point.

When Neo attacks an enemy, he'll automatically switch to a hand-to-hand combat stance, holstering any firearms, or even using them as part of the attack.

Strike



To Strike an enemy, get up close and press [LMB] to land punches and kicks. If an enemy attacks you with a Strike or a Special Attack, you can quickly press [LMB] to block the attack and counter it with your own.

As Neo gains skills, he will learn to combine a series of

strikes into devastating combos that can put opponents away quickly.

Combo Example

4-Hit Strike Combo ([LMB] x4)

Use Focus [Shift] with this Strike Combo to unleash powerful attacks that launch enemies into the air. A 4-Hit Combo can also be used to drive through an enemy's 3-Hit Combo.

Special Attack

Press [RMB] to perform Special Attacks - throws, grapples, holds and other combat moves. To throw an opponent, press [RMB] and press the movement keys in the desired direction to throw enemies at objects, over ledges and even at other enemies. You can



unlock additional Special Attacks throughout the game,

HAND-TO-HAND & MELEE COMBAT

including the ability to strip enemies of their weapons, and even turn them back on their owners by pressing the [Q] key. Special Attacks can also be used as part of linked combos, which unlock even more powerful attacks.

Combo Example

Focus Hyper Strike ([Shift] + [LMB], [RMB])

Knocks an enemy off-balance so Neo can deliver a crushing boot to the head.

Evade



You can dodge attacks and slip punches by pressing [Ctrl]. Combine this ability with Focus [Shift] to get out of even more trouble - dodging bullets and flipping over enemies and out of danger. You can also use Evades to confuse and stun your opponents, setting them up for devastating combos. In a similar manner, rapidly press Evade to break out of a stun yourself, or to make a quick recovery from an attack and avoid further damage.

Combo Example

Over-the-Head Forward Evade ([Shift] + [Ctrl])

Move toward an enemy and trigger this combo - Neo will vault over the enemy's head and land behind him, ready to take advantage of his confusion.

Killing Blow



The Killing Blow is Neo's most powerful attack. Hold Focus [Shift] and Special Attack [RMB] to charge it up, then release in the direction of an enemy to unleash the powerful blow. Combine Killing Blow with other attacks and jumps for bone-crunching combos. Killing Blows are best used

HAND-TO-HAND & MELEE COMBAT

to finish off stunned enemies, especially tougher opponents.

Combo Example

Aerial Killing Blow (Press and hold [Shift] and [RMB] while airborne to charge attack, then release [RMB].)

Get airborne before charging up and releasing a whirling kick.

Melee Weapons



Neo can punch and kick his way to success, but he can also stab, bash and skewer his way through enemies by using melee weapons – swords, axes, staves and more.

Like all weapons, Neo can pick up melee weapons by moving over them and selecting them via the Inventory

Manager. To fight, use Strikes, Special Attacks, Evades and Killing Blows as normal – melee weapons make these all of these attacks extra-powerful. To draw and holster melee weapons, choose them in your Inventory and press [F].

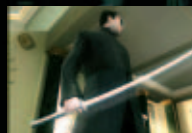
Melee weapons can also be thrown at enemies. To throw a weapon, press and hold the [T] key to charge up, and release to throw.

Stay aware of your surroundings – you can put some everyday objects found within the environment to use as improvised melee weapons.

Most melee weapons will break after extended use – the Inventory Manager meter tracks how a weapon decays with use. Some weapons have improved durability and attack power. Pay attention to the Inventory Manager meter to see just how much use is left with each melee weapon.

The following are examples of melee weapons you might find in the game. It's not a complete list – you'll have to discover some of these weapons on your own.

HAND-TO-HAND & MELEE COMBAT



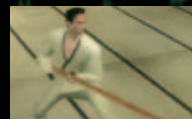
Katana

The two-handed sword of the samurai is known for its lethality.



Long Sword

The classic, one-handed long sword is as fast as it is deadly.



Bo Staff

Versatile in both offense and defense, the bo staff also provides a significant reach advantage, good for keeping groups of enemies at bay.

Other Fighting Moves

Aerial Attacks, Off-Wall Attacks

Combine Strike [LMB] and Special Attack [RMB] with Focus [Shift] and Neo's jumping and wall-running abilities to perform devastating attacks from nearly any angle.

Off-Line Attacks

In the Matrix, the Rebels are nearly always outnumbered, so you must learn to use Off-Line Attacks to take on groups of enemies. When in battle, move the movement keys in the direction of enemies behind or to the side, and Neo will direct attacks, blocks and special moves in all directions.

Link-Up Attacks

If you're surrounded by opponents, you can draw multiple opponents into a single attack and damage them both. Stun an enemy, press the movement keys in the direction of another opponent and press Special Attack [RMB]. If you time it right, you'll draw enemies into your attack and damage them all. Melee weapons are especially deadly when used against multiple opponents in this manner.



TARGETING

Use the mouse and the on-screen reticle to target enemies with firearms, grenades and thrown weapons.



To draw a weapon, select it in your Inventory and press [F] to draw the weapon. Press Fire [LMB] to fire or throw the weapon.

You can remain in weapons mode until you holster weapons by pressing [F] or until you attack an enemy with a hand-to-hand attack.

Targeting in the Air

While Neo is in the air, such as in the middle of a long Focus jump, he has a 360-degree view of his surroundings.

From this vantage point, he can target enemies in all directions. A good strategy is to get Neo airborne, use Focus [Shift] and attack enemies from above.



Targeting Objects

Neo can target objects in the environment. This ability is useful for destroying objects with gunfire, such as explosive objects that can damage nearby enemies.

GUNS...LOTS OF GUNS

For some missions, Neo is jacked into the Matrix with weapons, and throughout the game more weapons become available, either found within the mission or taken from enemies. Neo can pick up firearms by moving over them, and manage his inventory of firearms via the



Inventory Manager (see "Inventory Manager" on page 20).

You can use the Inventory Manager to select firearms manually, so you can be sure to have the right gun in Neo's hand at all times. Each firearm has specific strengths and weaknesses – you'll need to learn which is the right tool for the job.

In some instances, Neo can wield two firearms at the same time – one in each hand – for extra kicks.



Pistol

The pistol is Neo's starting weapon for most levels. It does moderate damage, with a moderate effective range.

The pistol is semi-automatic, but can be fired quite rapidly when Neo uses Focus. Neo can wield dual Pistols, one in each hand.



Agent Pistol

This massive handgun is carried by Agents and packs a major punch. Heavy kickback makes it slightly less accurate than a standard pistol, especially when fired rapidly.



Submachine Gun

Not as accurate as a pistol, but favored by SWAT teams for its high rate of fire. Neo can wield dual sub-machine guns, one in each hand.

GUNS...LOTS OF GUNS



Shotgun

SWAT entry teams often carry shotguns, which are useful at medium range but have devastating effects at close range.



Double-Barreled Shotgun

These weapons deliver massive damage at very close range, but are nearly useless at greater distances. Neo can

wield dual double-barreled shotguns, one in each hand – the double damage will take down even the deadliest enemies in one blast.



Assault Rifle

Fully automatic, the assault rifle delivers a precise and powerful punch at even the longest range.



Grenade Launcher

The grenade launcher fires an explosive round that detonates on impact. The blast eliminates or severely

damages everyone within the blast radius.

GRENADES

Grenades are useful for attacking enemies that are behind cover, as well for taking on Agents, who can dodge ordinary bullets but cannot dodge entire explosions.

Arm and throw grenades the same way you use a firearm – select a grenade in the Inventory Manager and press Fire [LMB] to throw.



Tear-Gas Grenade

Gas grenades release dangerous, choking gas that limits Neo's ability to target enemies and use Matrix abilities. Enemies affected by the gas become disoriented, severely hampering their ability to fight and shoot.

Flash-Bang Grenade

A flash-bang detonates with a tremendous shock and blinding flash, disorienting everyone within its effective radius.

Fragmentation Grenade

This standard, military-style grenade deals a large amount of damage to targets in its blast radius.



INVENTORY MANAGER

The Inventory Manager represents Neo's equipped weapons. Neo can carry up to three weapons at the same time – press the [3] and [4] keys to scroll left and right to select weapons in the inventory.

The meter below each weapon icon indicates its remaining ammunition or uses. When a firearm runs out of ammunition, or if a melee weapon shatters from overuse, it is automatically discarded and its inventory slot is emptied.

Picking Up Weapons and Ammo



There are two ways to pick up weapons:

If Neo has an empty inventory slot, he will automatically pick up weapons and store them in the inventory by simply running over them or touching them.

If all inventory slots are full, in order to pick up a new weapon you must swap it with a weapon already in the inventory. To swap items, move near the new item – its icon will appear below the Inventory Manager. Press [2] to swap the weapon for the currently selected weapon in your inventory.

Neo will automatically pick up ammunition for weapons currently in his inventory. To pick up ammunition, simply run over a weapon you find in the environment – its ammunition will be automatically added to your inventoried weapon.

Dual-Wield & Stackable Items

Neo can dual-wield some firearms, such as pistols, using one in each hand for double the firing action. When using firearms in this way, the items are “stacked” in the inventory – two firearms are stored in the same inventory slot and their ammunition is divided equally between them. When both weapons run out of ammunition, they are both tossed away and the inventory slot is emptied.

Grenades of the same type are also stackable. For example, you can carry several fragmentation grenades in the same inventory slot and use them one at a time.

FOCUS

Mastering all of Neo's abilities in the Matrix is the key to success. When Neo frees his mind, he unlocks the ability to move faster, run on walls and defy gravity.

As Neo progresses in power, he unlocks even more abilities. Dodge bullets? Neo doesn't *have* to.



Neo bends the rules of the Matrix by using the powers of Focus. To use Focus, press [Shift] when performing actions such as hand-to-hand combat, running and jumping.

Focus increases the speed and effectiveness of nearly every action and allows you to utilize Neo's special abilities. Use Focus in hand-to-hand combat to unleash spectacular moves. Combine Focus with firearms combat for more accurate, precise shots. When used with Evade [Ctrl], Focus even makes Neo a harder target to hit with both bullets and hand-to-hand attacks.

The Focus meter displays Neo's available pool of Focus. The longer you hold down Focus [Shift], the more you draw from the limited resource of the Focus pool. When the meter is depleted, Neo is limited to his normal level of strength and speed.

Regenerating Focus

Focus regenerates constantly, but only up to a limited amount. It might be enough to get yourself out of a jam, but not enough to dominate in combat.

Higher amounts of Focus are awarded for entering and succeeding in combat. Launch Strikes and Special Attacks, and you can earn enough Focus to either unleash a Killing Blow to finish the job, or jump to safety. Hand-to-hand combat earns you the most Focus, but you can also gain Focus through firearms combat.

Focus is your most precious resource in the game – the path to success means staying aware of your Focus levels and using it wisely.

FOCUS

Wall-Running and Wall-Jumping

Run alongside a wall, press and hold the Focus [Shift] and continue running toward the wall at an angle. Neo will bend the rules of gravity in the Matrix and sprint along the wall. Time it right, and he will even turn corners while still airborne.



You can also use Focus to make Neo jump off walls. Jump toward a wall, press against it and press Jump

Focus [Space] again to make Neo spring even higher.

These moves are great ways to avoid enemies and obstacles. Experiment with other Focused running and jumping moves to discover more combinations and effects.

Off-Wall Strikes

Using Focus, make contact with a wall (wall-running or wall-jumping), move toward an enemy and quickly press Strike [LMB] or Special Attack [RMB]. Neo will spring off the wall and drive through the enemy's defenses.



THE PATH OF THE ONE

As Neo walks the Path of the One, he continues to free his mind and gains the ability to bend the rules of the Matrix and manipulate his surroundings. Some of these Special Abilities are awarded automatically, while other, more powerful abilities must be unlocked.

Special Abilities

The following are examples of Special Abilities that are unlocked as Neo walks the path of the One. It's not a complete list – you'll have to discover some of these abilities on your own.

Code Vision



Neo can look past the illusion of the Matrix and see the world as a sea of shimmering, green code. This allows Neo to see through walls and locate enemies, allies and useful items. Press [C] to toggle Code Vision ON/OFF.

Dodging Bullets

Neo can free his mind to the point where his experience in the Matrix slows to a crawl, allowing him to dodge bullets. At first, Neo gains the ability to acrobatically dodge out of harm's way. Combine Focus [Shift] with Evade [Ctrl] while moving to make Neo perform this feat. Later, this ability evolves



into the power to stop bullets with a wave of the hand and even reflect them back at attackers.

Flight

When Neo becomes the One, the hacker formerly known as Thomas Anderson is free from the limitations of gravity. With this ability, press and hold Jump [Space] to make Neo glide upward in short bursts. In some situations, you can press [Space] to charge forward and attack while flying.

THE PATH OF THE ONE

Master Abilities



As Neo progresses in skill, he can unlock Master Abilities, which are awarded between levels. Master Abilities are more powerful moves and attacks that Neo can use to take on even the toughest opponents. To select Master Abilities, go to the Upgrades Screen and select available abilities to add to Neo's arsenal.

The following are examples of Neo's Master Abilities. You'll have to discover the others on your own.

Focus 360 Clear Out

Combine Focus [Shift], Strike [LMB] and Special Attack [RMB] and use movement keys to spin and knock back surrounding enemies.

Off-Wall Super Level 2

Press Special Attack [RMB] after a wall jump or wall run to make Neo slam into an enemy and knock him off his feet. Off-Wall Super moves are even more effective as part of combos – once a target is in the air, make Neo whip out a firearm and riddle the target with bullets.

Atman Principles

The rabbit hole is very deep, with many secrets to unlock.

Atman Principles are unlocked between missions in the same manner as Master Abilities. Some Atman Principles appear in Neo's inventory – press the left trigger to activate them. Atman Principles must be used in the same level they are selected.

Even More Secrets

You can earn additional rewards for collecting certain items and reaching certain objectives in the game. In most cases, you must complete the mission in order to earn your reward.

ALLIES & NPCs

Throughout the game, Neo will fight alongside other Rebels, receive instructions from his ship's Operator and interact with civilians still trapped in the Matrix.

Rebels

Neo must always protect his fellow Rebels from harm. If one fails, all fail. Here is a partial list of the Rebels that Neo will encounter:



Morpheus is Captain of the Nebuchadnezzar, a hovercraft that's part of the Zion fleet. He believes in the Oracle's Prophecy of the One, and when he meets Neo, he believes his search is over and salvation is near at hand.



Trinity is second-in-command of the Nebuchadnezzar. She is a hard-as-nails fighter who never, ever backs down.



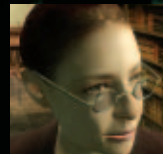
Apoc and Switch are crewmembers of the Nebuchadnezzar. They are skilled combatants who know how to take care of themselves.

The Operator



Each ship has an Operator who controls the Rebels' entry and exit from the Matrix and monitors their progress. In initial training missions, the Operator is a teacher and guide. During missions inside the Matrix, the Operator is Neo's only connection to the Real World.

Red Pills



Red Pills are people who are just beginning to awaken to the illusion of the Matrix. Each Red Pill has a special trait that has made them a target of the Agents, and it's up to you to learn how those traits can sometimes be useful to Neo's missions.

ALLIES & NPCs / ENEMIES

ENEMIES

Civilians



Civilians are humans still connected to the Matrix – utterly ignorant to the truth behind the illusion. While Neo is on a mission, most civilians can be safely ignored. Some may even be helpful. But remember – these people are still a part of the system, and that makes every one of them a potential enemy.

"You have to understand, most of these people are not ready to be unplugged. And many of them are so inured, so hopelessly dependent on the system that they will fight to protect it."

Security Guards & Police



The standard Police and Security Guard units within the Matrix are no match for the free minds of rebels like Neo, Morpheus and Trinity, but they can be dangerous in groups or when supported by shotguns and tear gas.

SWAT Team Officers



SWAT teams are the elite law enforcement units of the Matrix. SWAT units often carry automatic weapons and grenades, and their ability to work in groups makes them a force to be reckoned with.

Soldiers



Soldiers are far better trained, armed and armored than any police officer. Soldiers often carry heavy weapons, making them very deadly opponents.

Agents



"I've seen an agent punch through a concrete wall. Men have emptied entire clips at them and hit nothing but air."

Soulless system programs, Agents exist only to protect and preserve the Matrix.

Agents are near-unbeatable enemies – their strength and speed make them deadly martial arts opponents, and their ability to dodge bullets make them nearly impossible to kill with bullets. What's more, even if you manage to kill an Agent or escape pursuit, they can simply respawn at full power into a nearby body.

On the other hand ...

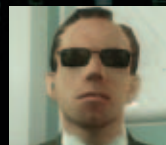
"...Their strength and their speed are still based in a world that is built on rules. Because of that, they will never be as strong or as fast as you can be."

Exiles

"There are programs running all over the place. The ones doing their job, doing what they were meant to do, are invisible. You'd never even know they were here. But the other ones, well, we hear about them all the time. ... Every time you've heard someone say they saw a ghost, or an angel. Every story you've ever heard about vampires, werewolves, or aliens, is the system assimilating some program that's doing something they're not supposed to be doing."

Exiles are rogue programs that have resisted the rules of the Machine World and have chosen exile within the Matrix. There are many different types of Exiles, each with its own abilities that make them dangerous opponents – perhaps even more dangerous than Agents.

Agent Smith



Just as Neo progresses through many changes while he walks his path, Agent Smith undergoes changes as well.

At first, Agent Smith is the leader of the Agents, seeking to regulate the system that enslaves mankind. Later, Smith becomes "a new man," so to speak, and adds his virus-like ability to create an endless army of copies.

What comes after that is anyone's guess...

STRATEGIES & TACTICS

Additional Fighting Strategies

Counter Strike: If an enemy leads with a punch or kick, press Strike [LMB] to block and follow up with an attack combo.



Counter Throw: Strikes counter many Special Attacks. If an enemy sets up to launch a Special Attack, such as a throw, press Strike [LMB] to counter-attack.

Watch for Openings: Some enemies “telegraph” their attacks. Use Evade [Ctrl] to sidestep their attacks and create an opening for a counter-attack. If an enemy charges up a big attack, press Strike [LMB] to disrupt it.

Use Cover and the Environment: Taking cover gives Neo time to recharge Health and plan his next move. Don't keep Neo in one place too long – enemies will quickly coordinate and surround him. Look for opportunities in the environment to end a battle quickly.

Fast Finishers:

Focus Hyper Strike: [Shift] + [RMB], [LMB]

Focus Lightning Strikes: [Shift] + [RMB], tap [LMB] rapidly

Attack Combos

On Screen Prompts: In addition to those listed here, on-screen icons give you hints to trigger powerful attack combos and other useful moves. Keep a sharp eye – timing is key.

Linking Combos: You can link combos together in order to keep enemies off-balance and deal even greater damage.

STRATEGIES & TACTICS

Get Airborne!



Focus 360° Aerial Targeting: Get airborne – Neo can target enemies all around him. Use Focus [Shift] + Jump [Space] to get into the air, then fire at will.

Battling Agents

Use the Environment: Agents are nearly unbeatable. In many cases, Neo's hand-to-hand attacks can only delay and annoy an Agent, and you'll have to think of another way to survive the fight. Try throwing Agents toward objects within the environment that can deal heavy damage.



Get Help from Allies: When Agents shoot at you, use Bullet Dodge to evade the shots and open up the Agent to attacks from your allies.

Turn the Agents' Abilities Against Them: Agents can dodge bullets, but firearms aren't completely useless. Blast a few shots at an Agent to pin them down while you gather your wits or make an escape.

Agents Adapt: Agents are adaptive programs that rapidly learn to counter repeated attacks. Your best chance of survival is to continually vary your types of attacks.

QUICK REFERENCE

Focus	[Shift]
4-Hit Strike Combo	[LMB] x4
5-Hit Strike Combo	[LMB] x5
6-Hit Strike Combo	[LMB] x6
Aerial Killing Blow	In air/[Shift] + [RMB] to charge/release to strike
Antigravity Jump	[Shift] + [Space]
Bullet Dodge	[Shift] + [Ctrl] + movement keys
Bullet Stop	Stand still/[Shift] + [Ctrl]
Code Vision	[C]
Double Jump	[Space] x2
Focus 360 Clear Out	[Shift] + [LMB] + [RMB] + movement keys
Focus Aerial Throw	Stun enemy/[Shift] + [RMB]/ then [LMB]
Killing Blow	[Shift] + [RMB]/release to strike
Off-Wall Strike	Wall-run or wall-jump/press [LMB]
Off-Wall Super	Wall-run or wall-jump/press [RMB]
Tornado Throw	Grab enemy in air with [RMB]/movement keys
Weapon Strip	[Q]

CREDITS

Written and Directed by

The Wachowski Brothers

Eon

Vanessa Carmichael
Associate Producer

Tim Bicio
Post Production Supervisor

Ian Slater
Assistant Film Editor

Matt Brooks
Digital Assistant

Johnathan Banta
Digital Supervisor

Shiny Entertainment

David Perry
President

Michael "Saxs" Persson
Game Director

Shawn Berryhill
Design Director

Designers
Eric Beaumont
Dax Berg
Benjamin "BJ" Cholewinski
Kenneth Lee
Jay Nielsen
Frank Rogan

Søren Hannibal
Technical Director

Senior Programmers
Tony Bennett
Torgeir Hagland
Martin Jensen
Rafael Paiz

Programmers
Michael Edwards
David Frenkel
Eric Harms
Patrick Hughes
David Msika
Bradey Smith
Stephen Wu

Scott Bruno
Gameplay Programming Director

Gameplay Programmers

Kyle Donaldson
Geoffrey Erickson
Franco Junio
Vince McDonnell
Mark Nonato
Christian Rickeye
Richard Skala
Joseph Williamson

Chandana "Eka" Ekanayake
Art & Cinematic Director

Jon Gwyn
Senior Environment Artist

Environment Artists

Ahmed Mustefa Ahad
Kari Birkeland
Daniel Chevalier
Chris Donelson
Shane Estanislaw
Jason Lewis
Chris Naves

Art Support

Johnnie Houston Estill II
Christian Laursen
Daniel Platt
Chris Regalado

Richard Mahon
Conceptual Artist

Darran Hurlbut
Senior Character Artist

Charles Bloomer
Visual FX Director

Visual FX Artists
Bryan Erck

Rob Jolliff
Javier Ojeda
Behrooz Roozbeh
Chaz Sutherland

Gabriel Rountree
Animation Director

Manjit Jhita
Senior Animator

Animators

Steve Klett
Aung Zaw Oo
Brian Weber

Animation Scripters

Mark Fiorentino
Kevin Jameel Hogan
Andrew LeMat

CREDITS

Fred Vang
Shaun Novak
Facial Animation

Adam Levenson
Audio Director

Sound Designers

Stephen Miller
Frank Szick

Adam Stiles
Sound Editor

Audio Scripters

Ray Cicero
Jason Gates
Ken Moodie
W.D. Hogan
Cinematic Co-Director

Cinematic Team

Alex Limon
Scott Holty
Scott Scherrer
Steffan Shurkin
Jan Sjoval
Paul Zimmer aka "Zimm"

Production

Todd Morgan
Senior Producer

Brian Wiklem
Producer

Jorge "HoHo" Oseguera
Associate Producer

Maja Persson
Production Coordinator

Mark Harwood
Production Coordinator

Lidia Hernandez
Coordinator Assistant

Sam Park
HR Manager

Pamela McSwain
Executive Assistant/Office Manager

Jean-Claude Boursiquot
IT Manager

Mike Lewis
IT Specialist

Atari

Bruno Bonnell
CEO/Chairman

Jean-Marcel Nicolai
Senior Vice President, Worldwide Content

Steve Tucker
Director, Global Brand Management

Jeff Kempler
Senior Vice President, Business and Legal Affairs

Steve Madsen
Vice President, Business and Legal Affairs

Wim Stocks
Executive Vice President of Sales

Diane Price Baker
Executive Vice President and CFO

Andrea Schneider
Director of PR

Marc Metis
Senior Vice President, Marketing

Nique Fajors
Vice President of Marketing

Erin Shanahan
Executive Assistant

Donna Henry
Superstar

Paul Hellier
Director of Technology

Martin Currie
Vice President of Marketing Services

Don Vu
CRM Manager

Christine Fromm
Sr. Manager of Channel Marketing

Andrew Green
Traffic Manager

Kurt Carlson, Red Sheet
Studio, Essex, Mass.
Documentation Specialist

Ezequiel "Chuck" Nunez
Manager of Publishing Support

Ken Ford
I.T. Manager/Western Region

Jimmie Lee
Manager of Technical Support

Lead Testers

Jon Hockaday
Paul Phillips

Jason Randall
Alissa Ivanovich
Assistant Lead Testers

Jason Kausch
Q.A. Testing Supervisor

Testers

Anom Chavez
Christopher Morales
Nessie Rilveria
Burdy Wang
Piers Sutton
Andrew Blomquist
Justin Goldstein
Matt Rush
Anthony Snyder
Brennen Vega
Chao Wang
Jonathan Apour
Andrew Bones
David Camburn
Niki Chen
Virgil Emperador
Phoenix Flowers
Mike Greenler
Rick Imperial
Jeff Loney
Alex Mack
Aja Pettit
Jason Randall
Ken Tran
Jesse Thurman
Dave Strang
Manager, Engineering Services and Compatibility Lab

Ken Edwards
Engineering Services Specialist

Dan Burkhead
Engineering Services Technicians

Eugene Lai
Engineering Services Technicians

Chris McQuinn
Senior Compatibility Analyst

Patricia-Jean Cody
Compatibility Test Lead

Cuong Vu
Compatibility Analyst

Joy Schnee
Director Strategic Relations

Cecelia Hernandez
Sr. Manager, Strategic Relations

Arthur Long
Strategic Relations Specialist

Todd Curtis
Vice President, Operations

Eddie Pritchard
Director of Manufacturing

Lisa Leon
Lead Senior Buyer

Gardnor Wong
Senior Buyer

Tara Moretti
Buyer

Atari Melbourne House

Vito Trifilo
QA Manager

Testers

Dominic Berzins
Rachel Topp
Sook Lee
William Keith,
Richard Brownlow
Ben Abbott

CREDITS

Warner Bros. Interactive Entertainment

Production

David Abrams
Producer

Nick Torchia
Associate Producer

Gary Sheinwald
Senior Producer

Karen Pierson
Manager of Rights & Clearances

Jonathan Eubanks
Director of Production

Philippe Erwin
Vice President of Production

Marketing & PR

Leo O'Lebe
Marketing Manager

Stephanie Johnson
Marketing Manager

David S. Cohen
Marketing Coordinator

Remi Sklar
Public Relations Manager

Jason Hall
Senior Vice President

Motion Picture Cast

Mary Alice
Oracle (new)

Julian Arahanga
Apoc

David Aston
Rhineheart

Helmut Bakaitis
Architect

Jeremy Ball
Businessman

Stephen Bastoni
Soren

Don Battee
Vector

Monica Bellucci
Persephone

Daniel Bernhardt
Agent Johnson

Henry Blasingame
Deus Ex Machina

Ian Bliss
Bane

Liliana Bogatko
Old Woman at Zion

Josephine Byrnes
Zion Controller

Lung Yun Chou (Collin)
Seraph

Paul Cotter
Corrupt

Terrell Dixon
Wurm

Matt Doran
Mouse

Laurence Fishburne
Morpheus

Gloria Foster
Oracle

Nona Gaye
Zee

Deni Gordon
Priestess

Paul Goddard
Agent Brown

Marc Gray
Choi

Lachy Hulme
Sparks

Fiona Johnson
Woman in Red

Roy Jones Jr.
Captain Ballard

David Kilde
Agent Jackson

Randall Duk Kim
The Key Maker

Harry Lennix
Lock

Belinda McClory
Switch

Matt McColm
Agent Thompson

Carrie-Anne Moss
Trinity

Tory Mussett
Beautiful Woman at Le Vrai

Ada Nicodemou
Dujour (White Rabbit Girl)

David No
Cain

Joe Pantoliano
Cypher

Anthony Ray Parker
Dozer

Harold Perrineau Jr.
Link

Jada Pinkett-Smith
Captain Niobe

Adrian Rayment
Twin #2

Neil Rayment
Twin #1

Keanu Reeves
Neo

Tahei Simpson
Binary

Robert Taylor
Agent Jones

Steve Vella
Captain Malachi

Clayton Watson
Kid

Hugo Weaving
Agent Smith

Leigh Whannell
Axel

Bernard White
Rama-Kandra

Lambert Wilson
Merovingian

Rowan Witt
Spoon Boy

Anthony Wong
Ghost

Anthony Zerbe
Councillor Hamann

Film Editing

Zach Staenberg

Game Cast

Michael Benyaer
Vamp, Police/Security

Andrew Bowen
Neo

Kimberly Brooks
Niobe, Civilian

Billy Brown
Doberman

George Cheung
Kung Fu Soldier, Chinatown Gangster, additional Walla

Jim Connor
Agent Jones, SWAT/Soldier

Kevin Delaney
The Heckler, SWAT/Soldier

Robin Atkin Downes
Merovingian, Vamp, Agent Thompson

Gideon Emery
Bane

Keith Ferguson
Link, Insectoid, Civilian

Laurence Fishburne
Morpheus

Nika Futterman
Switch, Witch Boss, Civilian

Michael Gough
Seraph, Agent Brown, Vamp

Jennifer Hale
Trinity

James Horan
Agent White, Civilian, Police/Security

Jeff Kelly
Civilian

Phil Lamarr
Operator, Ballard, SWAT/Soldier

CREDITS

Lex Lang
Police/Security, Civilian

Hope Levy
Red Pill Club Kid, Civilian

Mitch Lewis
Swordsman, SWAT/Soldier

Ming T. Lo
*Kung Fu Soldier, Chinatown
Gangster, additional Walla*

Stephen Marks
Police/Security, Civilian

James Mathis III
Police/Security

Paul Nakuchi
Red Pill Herb Shop Owner

Dempsey Pappion
Apoc, SWAT/Soldier

Rick Pasqualone
*Red Pill Security Guard,
SWAT/Soldier*

Peter Renaday
*The Key Maker, The Architect,
Police/Security*

Michael Rodgers
Doberman

Ben Shields
SWAT/Soldier

Christopher Smith
Agent Smith

Stephen Stanton
*Agent Jackson, Doberman,
Police/Security*

Mio Takada
Japanese Assassin

Jerry Tondo
Japanese Assassin

Fred Tatasciore
*Agent Johnson, Roland,
SWAT/Soldier*

Jen Taylor
Red Pill Librarian, Civilian

Brett Walter
Rogue Witch

Voice Talent Casting
and Directing

Tikiman Casting and Directing

Chris Borders
*Voice Talent Casting &
Directing*

Barbara Harris
Walla Group

Megasmith Sequence
by Blur

Tim Miller
Creative Director

Jerome Denjean
CG Supervisor

Dave Wilson
CG Supervisor

Jeff Weisend
Animation Supervisor

Kirby Miller
FX Supervisor

Al Shier
Producer

Mandy Sekelsky
Associate Producer

David Nibbelin
Layout

Modeling
Jerome Denjean

Kris Kaufman

Kevin Margo

Brandon Riza

Dave Wilson

Rigging
Remi McGill

Seung youb "Kull" Shin

Animation
Wim Bien

Bryan Hillestad

Makoto Koyama

Derron Ross

Davy Sabbe

Dave Vallone

Jeff Weisend

Jeff Wilson

Technical Animation

Derron Ross

August Wartenberg

Lighting and Compositing

Heikki Anttila

Corey Butler

Jerome Denjean

Laurent Pierlot

Brandon Riza

Dave Wilson

FX

Jiyoung Hong

Seung Jae Lee

Kirby Miller

Marlon Nowe

David Stinnett

Jon Jordan

*CG Character Technical
Supervisor*

Sze Chan

*Character Modeling QC
Supervisor*

Ryan Girard

Mocap

Christopher Hicks

Mocap Talent

Diego Garcia

Tools Programmer

Amanda Powell

Production Assistant

*Programming and Systems
Administration*

Duane Powell

Paul Huang

Matt Newell

Abe Shelton

Havok

Ross O'Dwyer

Physics Programming

Special Thanks

Mitch Morando

Mike Walsh

Nvidia

Greg James

Developer Technology Engineer

Kevin Myers

Developer Technology Engineer

Carrie Cowan

Developer Relations Manager

CREDITS

CRI Sofdec

CRI Sofdec, CRI ADX, and the
CRI Middleware logo are
©1999, CRI Middleware Co.,
LTD. All rights reserved.

Motion Capture by
Graff Network
Service

Clark Graff
Producer

Leslie LaPage
UPM/1st AD

Matthew Karnes
Mocap Supervisor

Alexa Anastasia
Studio Manager

David Bawel
Mocap Operator

Emi Tahira
Mocap Lead Editor

Peter Upson
Mocap Editor

Raymond Lee Massa
Mocap Editor

Casey Carmack
Mocap Editor

Scott Jenkins
Lead Animator

Sylvia Uchida
Animator

Mandy Jenkins
Animation Setup

Edward Velez
Mocap Coordinator

Urban Olsson
Camera Operator

Robert Hand
Playback Operator

Yolanda Jones
Craft Service PA

James Ciccarello
Set PA

Monique Patrice
Set PA

CREDITS

Dee Dee Street
Personal Trainer

Meaghan Kerins
Office PA

Motion Capture Choreography
James Lew, Dragonmaster Inc.

Motion Capture Performers
Arnold Chon
Matt Emery
Eric Halderman
Christopher Hoffman
Alex Huynh
Jermaine Soto
Gary Stearns

Original Music by Machine
Head

Jason Bentley
Music Supervision

Featured Artists
The Crystal Method
Junkie XL
Juno Reactor
Meat Beat Manifesto
Phitek
Amon Tobin (Courtesy of
Ninja Tune)

Tobias Enhus
Lead Composer

Mark Kilian
Composer

Dave Porter
Composer

Stephen Dewey
Executive Music Producer

Patty Chow Dewey
Executive Music Producer

Vicki Ordeshook
Music Producer

Isadora Chesler
Music Producer

Tobias Enhus
Original Music Mixer

Maggie Tran
Music Coordinator

Composer Assistants
Kip Smedley
Dustin Camilleri

The Seattle Orchestra
Orchestral Recordings

Simon James
Orchestral Contractor

Rob Bennett
Orchestrator

Rob Bennett
Conductor

Fredrik Sarhagen
Orchestral Mixer

Additional Music
François-Paul Aïche
A&J Music Productions
Rob Bennett
Marcus Brown
Eric Colvin
Todd Haberman
Thorsten Laewe
Erik Lundborg
H. Scott Salinas
Adam Schiff
Dave Porter
Mark Kilian

**Sound Design, Editorial,
& Mixing by Danetracks,
Inc.**

Bryan Watkins
Sound Design Supervisor

Sound Designers
Eric Lindemann
Roland Thai

Sound Editors
James Penny

Mike Camello
Sound Editor

Lance Brown
Re-Recording Mixer

**Sound Design by Earbash
Audio, Inc.**

Rebecca Liu
Yuan Liu

**Voice Talent Recording by
Technicolor Creative
Services (Burbank, CA)**

Morgan Gerhard
Recording Engineer

Mike Gollom
Recording Technical Support

Denise Diehl
Voice Talent Assistant

**Sound Design by Extreme
Audio Design**

Sound Designers
Paul Menichini
Mike Kamper

**Motion Picture
Localization by
Technicolor Interactive
Services**

Editors/Mixers
Patrick Giraudi
Lydian Tone
Phillip Kovats

**Walla Recording by
Wilshire Stages (Los
Angeles, CA)**

Eric Thomas
Recording Engineer

Walla Group
Catherine Cavadini
Vicki Davis
John Demita
Greg Finley
Jeff Fischer
Anneliese Goldman
Carlyle King
Tracy Metro
David J Randolph
Vernon Scott

"We Are the Champions"
Performed by Queen
Written by Freddie Mercury
Published by Beechwood Music
Corporation / EMI Music
Publishing
Licensed by courtesy of EMI
Records Limited

Additional Visual Effects
Created by SFD VFX and
Creative Post

Onlines by Modern Video Film

Public Relations
Karen Schildkraut
Highwater Group

CREDITS

Special Thanks

Joel Silver
Silver Pictures
Debra Baker
Chelsea Beck
Glenn Boswell
Wendy Bozzi
Nancy Bushkin
John Byrd
Steve Chalk
Lev Chapelsky
Chris Chen
Carrie Cowan
Leah Cowlin
Paula Davenport-Brummett
Don Davis

Marti Esteva
Harry Glantz
Marielle Henault
Julio Jerez
Scott Johnson
Jeneba Konare
Brian Lee
Richard Levin
Drew Medina
Morten Mikkelsen, Io
Interactive, for his normal
mapping white paper
Melissa Miller
OC3 Entertainment
Erik Olsen
Masao Oshimi
Stuart Roch
Harry Rubin
Anders Schroder
Lisa Scott
Susannah Scott
Irika Slavin
Liquid Development
Travis Stansbury
Michael Steuerwald
Jeri Street
Jennifer Stump
Shane Thompson
Village Roadshow Pictures
Simon Whipp

Not to mention our supportive
families!

Extra special thanks to
everyone who supported us!

www.shiny.com
www.atari.com

ATARI WEB SITES

To get the most out of your new game, visit us at:

atari.com

If you would like to chat with other gamers, as well as developers, visit our Community Forum area at:

ataricomunity.com

Kids, check with your parent or guardian before visiting any web site.

Chat Messages: Atari does not monitor, control, endorse, or accept responsibility for the content of chat messages. You are strongly encouraged not to give out identity or other personal information through chat message transmissions. Kids, check with your parent or guardian if you are concerned about any chat you receive.

Use of Atari web sites is subject to terms and conditions, which you can access at:

atari.com/us/tos

TECHNICAL SUPPORT

Help Via the Internet

Up-to-the-minute technical information about Atari products is generally available 24 hours a day, 7 days a week via the Internet at:

atarisupport.com

Through this site you'll have access to our **FAQ** (Frequently Asked Questions) documents, our **Hints/Cheat Codes** if they're available, and an **Email** area where you can get help and ask questions if you do not find your answers within the **FAQ**.

Note: In the event we must send you a Hint Sheet, FAQ document, patch or update disc via Email, we may require verifiable consent from a parent or guardian in order to protect children's privacy and safety online. Consent Forms are available at the web site listed above.

Help Via Telephone in the United States & Canada

For phone assistance, call Atari Technical Support at (425) 951-7106. Our Interactive Voice Response system is generally available 24/7, providing automated support solutions immediately.

This console-based product has automated support, which includes information such as gameplay tips, information on Control Keys, possible Cheat Code combination keys, and instructions for finding secret screens and/or additional game levels (if these type of items exist and are made available for this particular product).

Great News! We've improved our Automated Systems so that you can get product-specific Troubleshooting help more quickly. All you need to do is enter the product's **Part #** when prompted to do so. This will take you directly to all of our known issues and solutions for this title. The product's **Part #** is located in several places (on the CD label, Game Pak, package and/or plastic disc case, if applicable) and is usually identified by a number such as **04-12345**. When prompted by the Automated System, enter the **last five digits** of your product's Part #. (For example, Part # 04-12345 would require that you enter the "12345" portion of the number for that product.) **Note:** Some products simply feature a five-digit Part # without an "04-" prefix.

TECHNICAL SUPPORT

Live support is generally available Monday through Friday, 8:00 AM until 6:00 PM (Pacific Time). **Note:** We may be closed on major holidays.

Product Return Procedures in the United States & Canada

In the event our technicians at (425) 951-7106 determine that you need to forward materials directly to us, please include a brief letter explaining what is enclosed and why. Make sure you include the Return Merchandise Authorization Number (RMA#) supplied to you by the technician, and your telephone number in case we need to call you. You will receive the mailing address when the technician gives you the RMA#. Any materials not containing this RMA# will be returned to you unprocessed.

Warranty Policy in the United States & Canada

If our technicians determine that the product storage medium is found to be defective within ninety (90) days of original purchase, (unless otherwise provided by applicable law), Atari will replace the item free of charge, to the original purchaser, if the item is accompanied by the original dated receipt and packaging.

END-USER LICENSE AGREEMENT

IMPORTANT — READ CAREFULLY: Please be sure to carefully read and understand all of the rights and restrictions described in this End-User License Agreement (“EULA”).

AGREEMENT

This document is an agreement between you and Atari, Inc. and its affiliated companies (“Company”). The enclosed software game disc(s), cartridge or Game Pak (“Software”) and any accompanying printed materials are licensed to you only on the condition that you accept all of the terms contained in this EULA.

By opening this package and installing or otherwise using the Software you agree to be bound by the terms of this EULA. If you do not agree to the terms of this EULA you may not install or use the Software and within 15 days of purchase you must call the Tech Support telephone number listed in the manual accompanying the Software (the “Manual”). Select the Automated Phone System’s Main Menu option for Consumer Services and follow the prompts.

You will be given a Return Merchandise Authorization number (RMA #) by the technician. You then have 15 days from the date of this contact to return the Software in its protective covering, the Manual and the original sales invoice to the address supplied to you.

If this is a PC product, when you install the Software you will be asked to review and either accept or not accept the terms of the EULA by clicking the “I Accept” button. By clicking the “I Accept” button you acknowledge that you have read the EULA, understand it and agree to be bound by its terms and conditions.

COPYRIGHT

The Software is protected by copyright laws and international copyright treaties, as well as other intellectual property laws and treaties. All title and copyrights in and to the Software (including but not limited to any images, photographs, animations, video, music, text and “applets” incorporated into the Software) and any printed materials accompanying the Software are owned by the Company or its Licensors.

GRANT OF LICENSE

The Software is licensed and not sold to you and its use is subject to this EULA. The Company grants you a limited, personal, non-exclusive license to use the Software in the manner described in the user documentation. The Company reserves all rights not expressly granted to you in this EULA.

PERMITTED USES

1. If the Software is configured for loading on a hard drive, you may install and use the Software on a single computer.
2. You may make and maintain one copy of the Software for backup and archival purposes, provided that the original and copy of the Software are kept in your possession.
3. You may permanently transfer all your rights under this EULA, provided you retain no copies, you transfer all of the Software (including all component parts, the media and printed materials and any upgrades) and the recipient reads and accepts this EULA.

RESTRICTIONS

1. You may not delete or obscure any copyright, trademark or other proprietary notice on the Software or accompanying printed materials.
2. You may not decompile, modify, reverse engineer, disassemble or otherwise reproduce the Software.
3. You may not copy, rent, lease, sublicense, distribute, publicly display the Software, create derivative works based on the Software (except to the extent

expressly permitted in the Editor and End-User Variation section of this Agreement or other documentation accompanying the Software) or otherwise commercially exploit the Software.

4. You may not electronically transmit the Software from one computer, console or other platform to another or over a network.
5. You may not use any backup or archival copy of the Software for any purpose other than to replace the original copy in the event it's destroyed or becomes defective.

EDITOR AND END-USER VARIATIONS

If the Software includes a feature that allows you to modify the Software or to construct new variations (an "Editor"), you may use such Editor to create modifications or enhancements to the Software, including the construction of new levels (collectively the "Variations"), subject to the following restrictions. Your Variations: (i) must only work with the full, registered copy of the Software; (ii) must not contain modifications to any executable file; (iii) must not contain any libelous, defamatory or other illegal material, material that is scandalous or invades the rights of privacy or publicity of any third party; (iv) must not contain any trademarks, copyright-protected work or other property of third parties; and (v) may not be commercially exploited by you, including but not limited to making such Variations available for sale or as part of a pay-per-play or timesharing service.

TERMINATION

This EULA is effective until terminated. You may terminate this EULA at any time by destroying the Software. This EULA will terminate automatically without notice from the Company if you fail to comply with any provisions of this EULA. All provisions of this EULA as to warranties, limitation of liability, remedies and damages will survive termination.

LIMITED WARRANTY AND DISCLAIMER OF WARRANTIES

You are aware and agree that use of the Software and the media on which is recorded is at your sole risk. The Software and media are supplied "AS IS." Unless otherwise provided by applicable law, the Company warrants to the original purchaser of this product that the Software storage medium will be free from defects in materials and workmanship under normal use for ninety (90) days from the date of purchase. The warranty is void if the defect has arisen through accident, abuse, neglect or misapplication. If the Software fails to conform to this warranty, you may at your sole and exclusive remedy, obtain a replacement free of charge if you return the defective Software. Follow the Product Return Procedures described in the Manual. The Company does not warrant that the Software or its operations or functions will meet your requirements, or that the use of the Software will be without interruption or error.

TO THE FULLEST EXTENT PERMISSIBLE UNDER APPLICABLE LAW, EXCEPT FOR THE EXPRESS WARRANTY SET FORTH ABOVE, THE COMPANY DISCLAIMS ALL WARRANTIES, EXPRESS OR IMPLIED, INCLUDING AND WITHOUT LIMITATION, THE IMPLIED WARRANTIES OF MERCHANTABILITY AND FITNESS FOR A PARTICULAR PURPOSE AND NON-INFRINGEMENT. EXCEPT FOR THE EXPRESS WARRANTY SET FORTH ABOVE, THE COMPANY DOES NOT WARRANT, GUARANTEE OR MAKE ANY REPRESENTATION REGARDING THE USE OR THE RESULTS OF THE USE OF THE SOFTWARE IN TERMS OF ITS CORRECTNESS, ACCURACY, RELIABILITY, CURRENTNESS OR OTHERWISE. SOME JURISDICTIONS DO NOT ALLOW THE EXCLUSION OF OR LIMITATIONS ON IMPLIED WARRANTIES, SO THE ABOVE EXCLUSIONS AND LIMITATIONS MAY NOT APPLY TO YOU.

LIMITATION OF LIABILITY

IN NO EVENT WILL THE COMPANY OR ITS EMPLOYEES OR LICENSORS BE LIABLE FOR ANY INCIDENTAL, INDIRECT, SPECIAL, CONSEQUENTIAL OR PUNITIVE DAM-

AGES, OR ANY DAMAGES WHATSOEVER (INCLUDING, WITHOUT LIMITATION, DAMAGES FOR INJURY TO PERSON OR PROPERTY, FOR LOSS OF PROFITS, BUSINESS INTERRUPTION, LOSS OF BUSINESS INFORMATION, LOSS OF PRIVACY, FAILURE TO MEET ANY DUTY AND NEGLIGENCE) ARISING OUT OF OR IN ANY WAY RELATED TO THE USE OR INABILITY TO USE THE SOFTWARE, EVEN IF THE COMPANY OR AN AUTHORIZED REPRESENTATIVE OF THE COMPANY HAS BEEN ADVISED OF THE POSSIBILITY OF SUCH DAMAGES. SOME JURISDICTIONS DO NOT ALLOW THE EXCLUSION OF LIABILITY FOR INCIDENTAL OR CONSEQUENTIAL DAMAGES, SO THE ABOVE EXCLUSION MAY NOT APPLY TO YOU. IN NO EVENT WILL THE LIABILITY OF THE COMPANY FOR DAMAGES WITH RESPECT TO THE SOFTWARE EXCEED THE AMOUNTS ACTUALLY PAID BY YOU FOR THE SOFTWARE.

CHOICE OF LAW AND VENUE

This EULA is governed by the laws of the United States of America and the State of New York, exclusive of its conflicts of law provisions. The exclusive venue for litigation regarding or arising from this EULA is New York County, New York and you agree to submit to the Jurisdiction of the courts of New York County, New York for any such litigation.

MISCELLANEOUS

If any provision or portion of this EULA is found to be unlawful, void, or for any reason unenforceable, it will be severed from and in no way affect the validity or enforceability of the remaining provisions of the EULA.

This EULA constitutes the entire agreement between you and the Company regarding the Software and its use.



TM & © Warner Bros. Entertainment Inc.

WBIE LOGO, WB SHIELD: TM and © Warner Bros. Entertainment Inc. (s05)

THE MATRIX: PATH OF NEO software and other aspects © 2005 Atari, Inc. All Rights Reserved. All trademarks are the property of their respective owners. Manufactured and marketed by Atari, New York.

The Shiny logo © 2005 Shiny Entertainment. All rights reserved. Shiny Entertainment is a wholly-owned division of Atari, Inc.

CRI, CRI Softdec, CRI ADX, and the CRI Middleware logo are © 1999, CRI Middleware Co., LTD. All rights reserved.

Havok.com™ © Copyright 1999-2005 Havok.com Inc. (and its Licensors). All Rights Reserved. See www.havok.com for details.

Dolby, Pro Logic, and the double-D symbol are trademarks of Dolby Laboratories.

THX and the THX logo are trademarks of THX Ltd. which may be registered in some jurisdictions. All rights reserved. A THX Certified Game is your assurance of consistent and optimal sound and picture presentation. This game title was developed in a studio that meets the THX stringent reference standards for acoustical and visual performance, letting you experience the best in sound and picture playback.

09265



PON PC Manual
Back
4/4 48 pages

