

tab M8 (2nd GEN)

PUSH THE EDGE OF A STUNNING MULTIMEDIA TABLET.

Lenovo™ Tab M8 is the 2nd generation mainstream tablet that comes with standout metal design, and is tailored to make your entertainment experience richer. The stunning 8" FHD display brings you a crispier and brighter visual world. You will never worry about missing a detail of any pixel as it is compacted with a FHD display. The fast speed and stable connection can also make your enjoyment perfect. Lenovo Tab M8, your best companion device with stunning performance and stylish design. The device that everyone wants to have.



Lenovo™

WHY YOU SHOULD BUY THE LENOVO TAB M8 (2nd GEN)



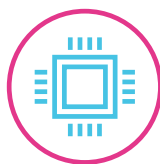
Stylish look & feel

Standout design with modern simplicity and refined with dedicated details, with up to 95 full metal cover, and 83% panel-to-body ratio.



Dazzling display

Vibrant FHD display gives you a detail of any pixel.



Fast and powerful

Non-stop game playing and video streaming, packed with Octa-Core, and up to 2.3 GHz main frequency, and 2.4/5 GHz WiFi dual band support.



Never miss a moment

The 13 MP AF rear camera with LED flash light will help you best capture fantastic live comment. Relive with your sweet memory.



True eye care protection

With special light and display technology development, Lenovo tablets ensure that the display lowers harmful blue light when appropriate to reduce strain on the eyes.



WWW.LENOVO.COM



tab M8 (2nd GEN)

SPECIFICATIONS

DESIGN



Weight

-305 g (-0.67 lbs)

Operating System

Android™ 9 Pie™



PERFORMANCE

Processor

MediaTek® Helio P22T Tab, Octa-Core, up to 2.3 GHz main frequency

Audio

1 x Side Speaker, Tuned with Dolby Audio™

Microphone

Single Microphone

Memory

RAM : 3 GB/4 GB¹
ROM : 32 GB/64 GB¹

Battery

Capacity : 5000 mAh (Minimum),
5100 mAh (Typical)

Web Browsing Time : Up to 18 Hours

Video Playback Time : Up to 12 Hours



Display

Size : 8"
Type : IPS
Resolution : FHD (1920 x 1200)
Screen : TDDI Direct Bonding
Color Depth : 16.7 Million
Color Gamut : 60% (Typical)
Color Nits : 350 nits (Typical)
Touch : 10-point Multitouch



Color

Platinum Grey



SIM²

Type : Nano+TF
Slot : Single Slot



CONNECTIVITY

Wireless Connectivity

WLAN : WiFi 802.11 a/b/g/n/ac; 2.4/5 GHz
Bluetooth® : Bluetooth® 5.0
WiFi Direct : Yes
WiFi Display : Yes
GPS : Yes
A-GPS : Yes
Beidou : Yes
GLONASS : Yes

Bands Supported

ROW
GSM : B2/B3/B5/B8
WCDMA : B1/B2/B5(B6/B19)/B8
FDD LTE : B1/B2/B3/B4/B5(B19)/B7/B8/B20
TDD LTE : B38/B40
PRC
GSM : B2/B3/B5/B8
WCDMA : B1/B2/B5/B8
TD-SCDMA : B34/B39
FDD LTE : B1/B3/B5(B19)/B7/B8
TDD LTE : B34/B38/B39/B40/
B41 (2545-2655 MHz)



Camera

Rear
13 MP Auto-Focus
with Flash

Front
5 MP Fixed-Focus



Sensors

Ambient Light Sensor³
P-Sensor³
Accelerometer (G) Sensor
Vibrator²

Fingerprint: No

I/O Buttons

1 x Volume +/-
1 x Micro USB 2.0⁴
3.5 mm Audio Jack (AHJ)

SOFTWARE

- Lenovo Launcher
- Google Messages
- Google Phone
- Gmail
- Google Chrome
- Google Play Music
- Google Photo
- Google Calendar
- Google App Search
- Kids Mode
- Tablet Manager
- Netflix
- Bing Wallpaper

¹ Certain countries only.

² For LTE SKU.

³ For PRC SKU and LTE only.

⁴ Notes:

- Supporting T-Hub2 (2019).
- Support 1 x Micro USB connector for power charge and data sync at the same time [T-Hub2 (2019)].
- Support OTG - 2 x Standard USB 2.0, RJ45, x-in-1 Card Reader (ex: SD/MMC/MS/xD Reader).
- 2 GB + 16 GB/4 GB + 64 GB are technique ready.

WHAT'S IN THE BOX

- Lenovo Tab M8 (2nd Gen)
- Travel Adapter (5V/2A)
- Cable
- Quick-Start Guide
- Warranty Card



ACCESSORIES



Lenovo Folio Case

RECOMMENDED LENOVO SERVICES

Warranty Extensions (1-to-3 Years Total Duration)* The fixed-term, fixed-cost service helps accurately budget for PC expense, protect your valuable investment and potentially lower the cost of ownership.

Accidental Damage Protection* Avoid the hassles of unexpected repair costs. Provides coverage for non-warranted damage incurred under normal operating conditions, such as minor spills, drops or damage to the integrated screen.

* Not available in all countries.

WANT MORE?

Tab P10, Tab M10,
Tab E10, Tab E8



WWW.LENOVO.COM



Lenovo reserves the right to alter product offerings and specifications at any time, without notice. Lenovo makes every effort to ensure accuracy of all information but is not liable or responsible for any editorial, photographic or typographic errors. All images are for illustration purposes only. For full Lenovo product, service and warranty specifications visit www.lenovo.com. Lenovo makes no representations or warranties regarding third party products or services. **Trademarks:** The following are trademarks or registered trademarks of Lenovo: Lenovo, the Lenovo logo, Yoga, Google and the Google logo are trademarks of Google Inc. Android is a trademark of Google Inc. Ultrabook, Celeron, Celeron Inside, Core Inside, Intel, Intel Logo, Intel Atom, Intel Atom Inside, Intel Core, Intel Inside, Intel Inside Logo, Intel vPro, Itanium, Itanium Inside, Pentium, Pentium Inside, vPro Inside, Xeon, Xeon Phi and Xeon Inside are trademarks of Intel Corporation in the U.S. and/or other countries. Other company, product and service names may be trademarks or service marks of others. Battery life (and recharge times) will vary based on many factors including system settings and usage. ©2019 Lenovo. All rights reserved.

Lenovo™