

Snowmobile Use Map

Arapaho National Forest - Sulphur Ranger District

Groomed Routes Maintained by the Following Partners:

- * Grand Lake Trail Groomers
- * Grand Adventure Snowmobile Tours
- * Trailblazer Snowmobile Tours
- * Aspen Canyon Ranch Snowmobile Tours

PROHIBITIONS

It is prohibited to possess or operate an over-snow vehicle on National Forest System lands on the Sulphur Ranger District other than in accordance with these designations (CFR 261.14). An over-snow vehicle is a motor vehicle that is designed for use over snow and that runs on a track or tracks and/or a ski or skis while in use over snow.

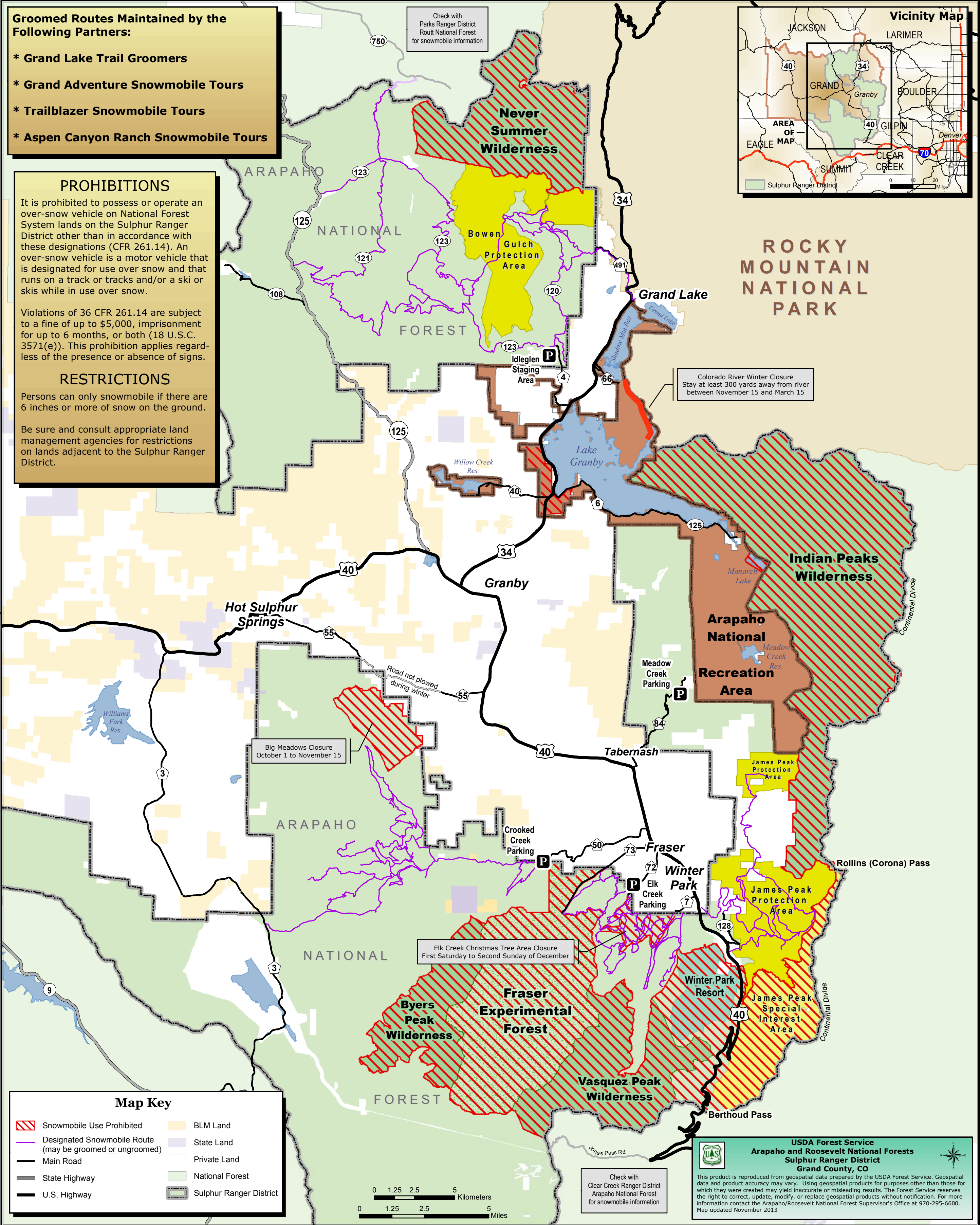
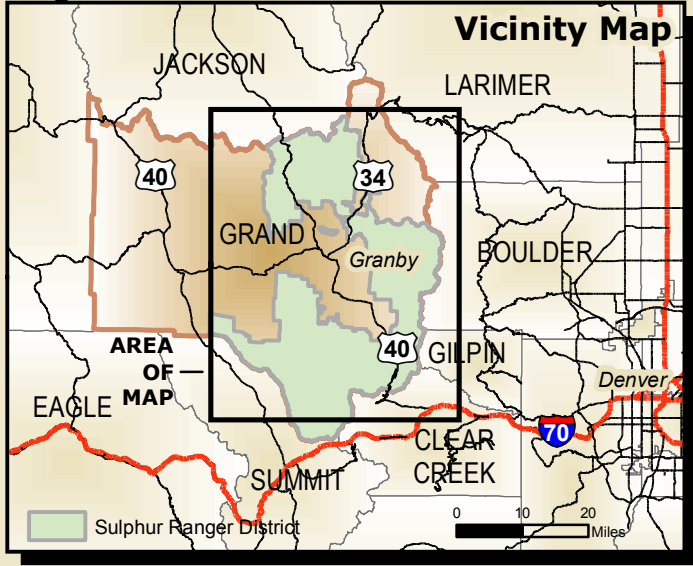
Violations of 36 CFR 261.14 are subject to a fine of up to \$5,000, imprisonment for up to 6 months, or both (18 U.S.C. 3571(e)). This prohibition applies regardless of the presence or absence of signs.

RESTRICTIONS

Persons can only snowmobile if there are 6 inches or more of snow on the ground.

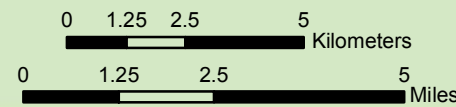
Be sure and consult appropriate land management agencies for restrictions on lands adjacent to the Sulphur Ranger District.

Check with
Parks Ranger District
Rout National Forest
for snowmobile information



Map Key

	Snowmobile Use Prohibited		BLM Land
	Designated Snowmobile Route (may be groomed or ungroomed)		State Land
	Main Road		Private Land
	State Highway		National Forest
	U.S. Highway		Sulphur Ranger District



Check with
Clear Creek Ranger District
Arapaho National Forest
for snowmobile information

USDA Forest Service
Arapaho and Roosevelt National Forests
Sulphur Ranger District
Grand County, CO

This product is reproduced from geospatial data prepared by the USDA Forest Service. Geospatial data and product accuracy may vary. Using geospatial products for purposes other than those for which they were created may yield inaccurate or misleading results. The Forest Service reserves the right to correct, update, modify, or replace geospatial products without notification. For more information contact the Arapaho/Roosevelt National Forest Supervisor's Office at 970-295-6600. Map updated November 2013