

EPSON Stylus C44 User's Guide	3
About Your Printer	5
About Your Software	7
Loading Paper	8
Single Sheets	8
Printing on Envelopes	9
Special Papers	10
Printing in Windows	11
Printing from a Software Program	12
Selecting the Settings You Use Most Often	15
Printing With Macintosh OS X	16
Printing With the Minimize Margins Feature	19
Printing With Macintosh OS 8.6 to 9.x	22
Selecting the Correct Paper Type	25
Cleaning the Print Head	27
Running the Head Cleaning Utility	27
Examining the Nozzle Check Pattern	28
Purchasing Ink Cartridges	28
Replacing an Ink Cartridge	29
Checking the Ink Supply	29
Ink Cartridge Precautions	30
Removing and Installing Ink Cartridges	31
Aligning the Print Head	33
Cleaning the Printer	35
Transporting the Printer	36
Printer Parts	37
Diagnosing Printer Problems	37
Checking the Printer's Lights	37
Running a Printer Check	38
Problems and Solutions	39

Setup and Software Installation Problems	39
Printer Problems	41
Print Quality Problems	42
Paper Feeding Problems	44
Miscellaneous Printout Problems	45
Reinstalling Printer Software	46
Windows	46
Macintosh OS X	47
Macintosh OS 8.6 to 9.x	47
Where To Get Help	48
System Requirements	49
Windows System Requirements	49
Macintosh System Requirements	49
Specifications	50
Printing	50
Paper	50
Ink Cartridges	54
Mechanical	55
Electrical	55
Environmental	56
Safety Approvals	56
Appendix	57
Copyright Notice	57
A Note Concerning Responsible Use of Copyrighted Materials	57
Trademarks	58

EPSON Stylus C44 User's Guide

This *User's Guide* contains instructions on printing with Windows® or on a Macintosh,® maintaining the EPSON Stylus® C44, solving basic problems, and specifications. To set up your printer and install your Windows XP or Macintosh software, see the *Start Here* sheet.

To install your Windows 98, Me, or 2000 printer software, see the *Installing Software for Windows 98, Windows Me, and Windows 2000* booklet. This booklet also contains safety instructions, your printer warranty, and other important information.

Please follow these guidelines throughout:

Warnings must be followed carefully to avoid bodily injury.

Cautions must be observed to avoid damage to your equipment.

Notes contain important information about your printer.

Tips contain additional hints for better printing.

About Your Printer

Printing with your EPSON Stylus C44 printer is easy, friendly, and fast. Simple enough for even the most inexperienced user, the Stylus C44 prints everything from school reports to family photos with great results.

The Stylus C44 includes Exif (Exchangeable Image File) Print format support, which lets your printer use information stored in your digital camera to print more accurate reproductions of digital camera images.

For added value, the printer supports a wide range of EPSON® special media, including Glossy Photo Greeting Cards, Photo Stickers®, and special photo papers in a variety of sizes and finishes. Visit the EPSON StoreSM at www.epsonstore.com for a complete list.

About Your Software

The CD-ROM that came with your printer includes all the software you need for printing. See your *Start Here* sheet for installation instructions.

- **Your printer driver** runs your printer and lets you control how your documents look. You can't print without it.

Tip: It's a good idea to check EPSON's support web site periodically for free updates to your printer driver. Visit <http://support.epson.com>. Download instructions are posted for your convenience.

- **EPSON Software™ Film Factory™** is a photo management program that lets you organize, beautify, and print your photos in a flash. Supports Exif Print (except with Mac® OS X).



Note: With Exif Print, image settings such as white balance, contrast, and exposure time are saved in your digital photo files. If your digital camera supports Exif Print, you can use this technology when you print with Exif Print enabled applications like Film Factory.

- **EPSON PhotoCenterSM** is EPSON's free photo-sharing web site where you can store, organize, and share your photos; print high-resolution photos straight from the web; and create free online postcards with your photos. Your printer software installer lets you add a link to the EPSON PhotoCenter on your desktop.



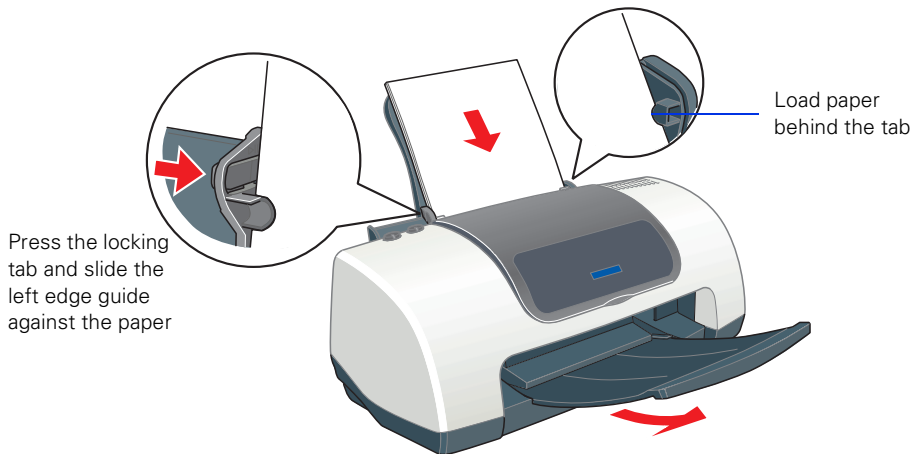
Loading Paper

- Single Sheets
- Printing on Envelopes
- Special Papers

Single Sheets

Make sure your printer and computer are turned on.

1. Place your paper against the right edge of the sheet feeder, behind the tab.
2. Press in the locking tab on the left edge guide and slide it against the paper.



3. Pull out the output tray extension.

Follow these guidelines when loading paper:

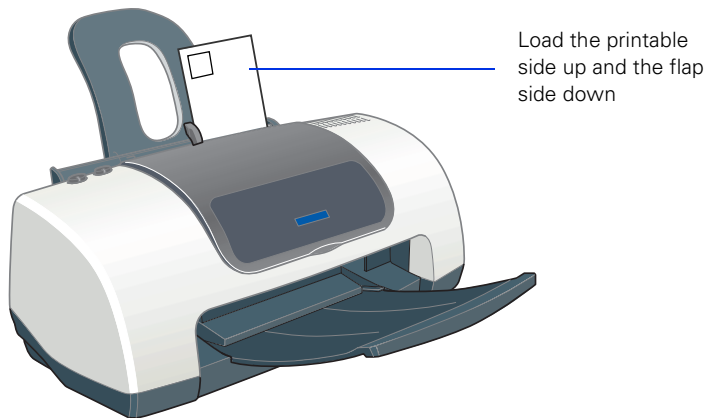
- Always load the short edge first, even when you're printing landscape oriented documents.
- Load the printable side face up. It's usually whiter or brighter than the other side.
- Load letterhead or preprinted paper into the printer top edge first.
- Don't load paper above the arrow on the left edge guide.

- Load the following media types one sheet at a time: Photo Quality Self Adhesive Sheets, Photo Stickers, and Panoramic Photo Paper.
- If you're using special media, follow the instructions that came with the media.

Printing on Envelopes


You can load up to 10 envelopes at a time. Follow these steps to print on No. 10 size envelopes:

1. Load the envelopes short edge first against the right edge of the sheet feeder, behind the tab. The printable side should be up, and the flap side should be down and on the left.
2. Press in the locking tab on the left edge guide and slide it against the envelopes.



3. In your application software, set a left margin of approximately 3 inches. Set a top margin of approximately 2 inches. Then type the address.
4. Open your printer software and make the following settings:
 - For paper Type (Windows) or Media Type (Macintosh), select **Plain Paper**
 - For Orientation, select a **Landscape** option
 - For Paper Size, select the **Envelope #10** option.
5. Do one of the following to preview of your envelope layout:
Windows: Click the **Print Preview** box, then click **OK**. Click **Print** in the **Print** window.

Macintosh OS X: Click the **Preview** button on the Print Settings menu.

Macintosh OS 8.6 to 9.x: Click the  button on the printer settings menu. Then click the **Preview** button that appears.

6. If you need to change the margins, cancel or close the preview window and adjust the margins in your application software. Then repeat step 4 and step 5.
7. When your preview looks okay, print the envelope:

Windows and Macintosh OS 8.6 to 9.x: Click the **Print** button on the Print Preview window.

Macintosh OS X: Select **Print** from your application software's File menu. Then click the **Print** button on the window that appears.

Special Papers

EPSON offers the following special papers for the EPSON Stylus C44:

Paper name	Size	Part number
EPSON Premium Bright White Paper	Letter (8.5 x 11 inches)	S041586
EPSON Photo Quality Ink Jet Paper	Letter (8.5 x 11 inches)	S041062
	A4 (8.3 x 11.7 inches)	S041061
	Legal (8.5 x 14 inches)	S041067
EPSON High Quality Ink Jet Paper	Letter (8.5 x 11 inches)	S041111
	A4 (8.3 x 11.7 inches)	S041117
EPSON Photo Quality Ink Jet Cards	A6 (4.1 x 5.8 inches)	S041054
EPSON Glossy Photo Paper (EPSON Photo Paper)	4 x 6 inches	S041134 S041671
	Letter (8.5 x 11 inches)	S041141 S041649 S041271 S041272
	A4 (8.3 x 11.7 inches)	S041140
	Panoramic (8.3 x 23 inches)	S041145

Paper name	Size	Part number
EPSON All-Purpose Glossy Paper	Letter (8.5 x 11 inches)	S041654
EPSON Photo Stickers Kit (CD-ROM/paper) EPSON Photo Stickers (refill)	A6 (4.1 x 5.8 inches)	S041144-KIT
	A6 (4.1 x 5.8 inches)	S041144
EPSON Ink Jet Transparencies	Letter (8.5 x 11 inches)	S041064
EPSON Photo Quality Self Adhesive Sheets	A4 (8.3 x 11.7 inches)	S041106
EPSON Photo Quality Glossy Paper	Letter (8.5 x 11 inches)	S041124
	A4 (8.3 x 11.7 inches)	S041126
EPSON Matte Paper Heavyweight	Letter (8.5 x 11 inches)	S041257
EPSON Double-Sided Matte Paper	Letter (8.5 x 11 inches)	S041568
EPSON Glossy Photo Greeting Card Kit	Letter (8.5 x 11 inches)	S041606

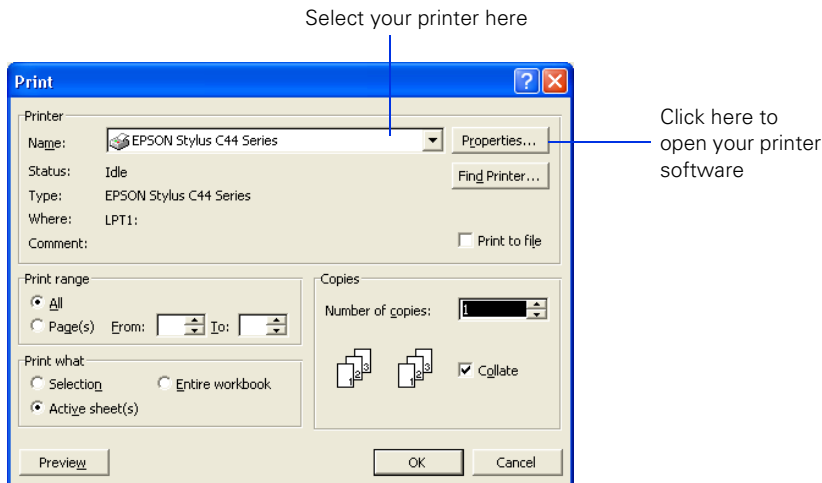
Printing in Windows

- Printing from a Software Program
- Selecting the Settings You Use Most Often

Printing from a Software Program

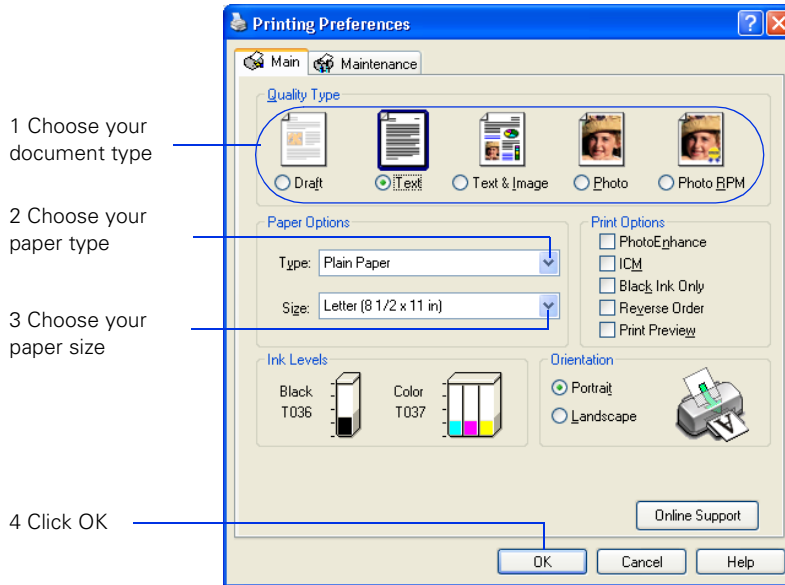
Here's what to do to print a basic document—such as a newsletter or school project. After you create your document in a software program, follow these steps to print.

1. From the File menu, click **Print**. You see a Print window (your window may look different):



2. Make sure **EPSON Stylus C44 Series** is selected.
3. Click the **Properties** or **Preferences** button. (If you see a **Setup**, **Printer**, or **Options** button, click it. Then click **Properties** or **Preferences** on the next screen.)

You see your printer Properties (or Preferences) window.

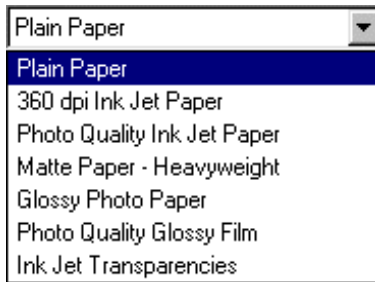


4. Select the type of document you're printing:

- **Draft:** For rough drafts on plain paper. Saves ink.
- **Text:** For text-only documents, like letters or reports. Delivers high-quality text printing.
- **Text & Image:** For documents that have both text and images, like newsletters.
- **Photo:** For photos and graphics, when you want good quality with faster printing.
- **Photo RPM:** For photos or graphics, when you need highest quality printing. Because this setting increases resolution, it also increases print time.

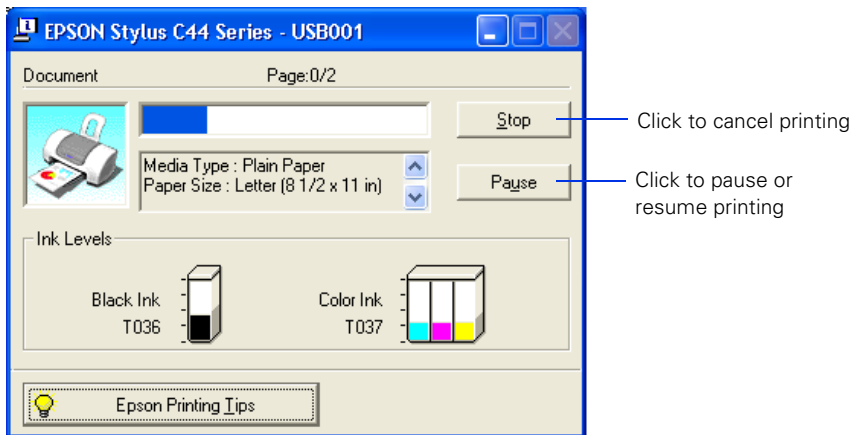
5. Load the right paper for your document. See [Loading Paper](#) for instructions.

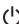
6. If you loaded special paper, choose the correct paper type (click the arrow to scroll through the Type list). If you're not sure which setting to select, see [Selecting the Correct Paper Type](#).



7. Select your paper size (click on the arrow to scroll through the Size list).
 8. If necessary, select your page orientation: **Portrait** for documents that are longer than they are wide, or **Landscape** for documents that are wider than they are long.
 9. You can also make these settings:
 - **PhotoEnhance:** Improves the appearance of low-resolution and improperly exposed photos. Not available when Black Ink Only is selected.
 - **ICM (Image Color Matching):** Matches colors on your printout as closely as possible to the colors you see using ICM-compatible monitors or scanners.
 - **Black Ink Only:** Prints using only black ink.
 - **Reverse Order:** Prints your document so that the pages are in the right order when you retrieve them from the paper tray.
 - **Print Preview:** Lets you see what your printout will look like before you print.
- Tip:** For more information about printer settings, click the Help button, or right-click any item on the screen and then click What's This?.
10. Click **OK** to return to the Print window. Then click **OK** (or **Print**) to start printing.


After a moment, this window appears and shows the progress of your print job. You can use the buttons to cancel, pause, or restart printing. You can also see how much ink you have left.



Caution: When you're finished using your printer, make sure you press the  power button to turn it off. Never use a power strip or external switch to turn off the printer.

Selecting the Settings You Use Most Often

Your printer settings apply only to the program you're currently using. If you usually print one type of document in different programs—for example, color photos on letter-size paper—you can change the default printer settings for all your programs.

1. Right-click the  printer icon on your taskbar (in the lower right corner of your screen).
2. Select **Printer Settings**. You see your printer settings window, as shown in [Printing from a Software Program](#).
3. Select the default settings you want to use for all your applications. Click **OK** when you're finished.

Remember that you can always change the settings in your program when you want to print different types of documents.

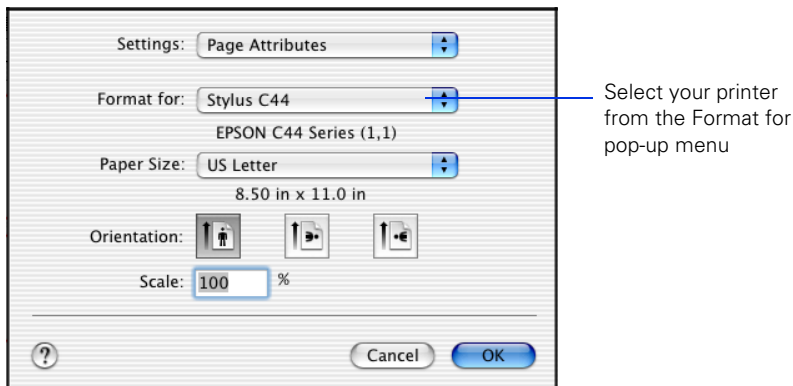
Printing With Macintosh OS X

■ Printing With the Minimize Margins Feature

Here's how to print a basic document, such as a newsletter or school project, if your Macintosh is running OS X. Make sure you have paper in the printer, as described in [Loading Paper](#). After you create your document, follow these steps to print it.

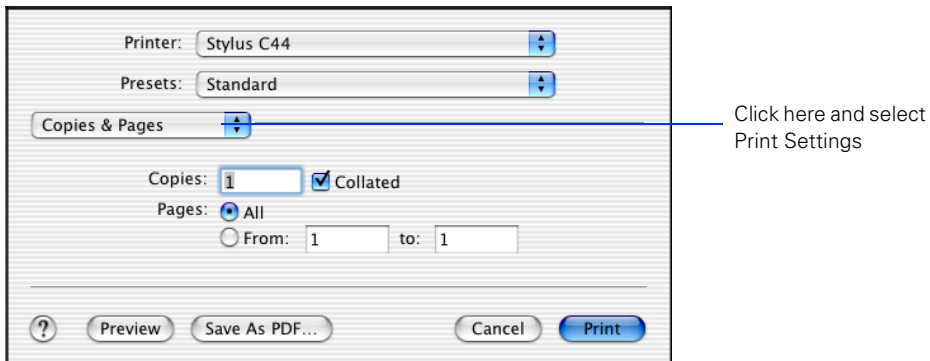
Note: If you're using an application that's compatible only with Macintosh Classic mode, follow the steps in [Printing With Macintosh OS 8.6 to 9.x](#) to print your document.

1. From the File menu, select **Page Setup**. You see a screen like this:

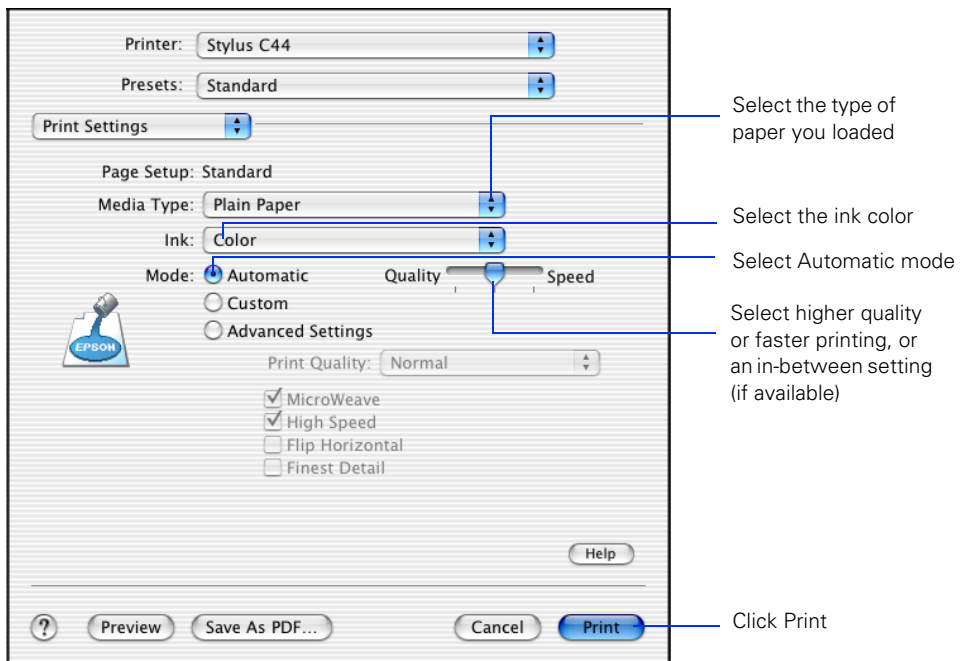


2. Select your printer from the Format for menu.
3. Select your paper size (click on the arrow to scroll through the Paper Size list).
4. If necessary, select your page orientation: [Portrait] for documents that are longer than they are wide, or [Landscape] or [Wide Landscape] for documents that are wider than they are long.

5. Select **Print** from the File menu. You see a screen like this:




6. Select **Print Settings** from the pull-down menu. You see a group of settings like this:

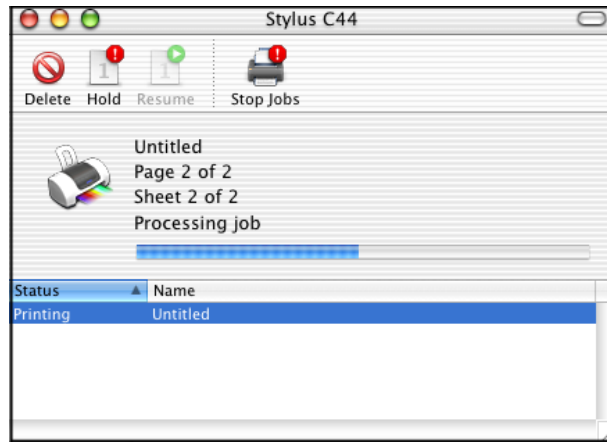


7. Select the following settings:

- Load the right paper for your document in the printer. If you loaded special paper, choose the correct paper type in the Media Type list. If you're not sure which setting to choose, see [Selecting the Correct Paper Type](#).

- Set the Ink option to **Color** to print a color document. To print a black text document, click **Black**.
 - Set the Mode option to **Automatic**. It's the easiest way to get good printing results for most projects.
 - Set the slider to **Quality** or **Speed** to select high-quality printing, faster printing, or an in-between setting (if available). The slider may not be available for some paper types.
8. To select a specific print quality setting, click **Advanced Settings** and choose a setting from the Print Quality menu:
- **Economy or Economy Plus**: For printing drafts on plain paper. Saves ink. (**Economy Plus** is only available if you select **Black** as the ink color.)
 - **Normal**: For everyday printing needs.
 - **Fine**: When you want a higher resolution for printing text or text and graphics.
 - **Photo**: For printing photographs.
 - **Photo RPM**: When you want the highest resolution for your photographs and you don't mind the longer print time.
9. You can also choose other print settings by selecting these options in the pull-down menu:
- **Copies & Pages**: To select the number of copies or a page range
 - **Layout**: To select page layout options.
 - **Output Options**: To save your print job as a PDF file.
 - **Color Management**: To select ColorSync® or adjust the color controls or gamma setting.
 - **Summary**: To view a list of all your selections.
 - **Save Custom Setting**: To save your selections for future use (not available with Mac OS X 10.2.x.).
10. When you're ready to print, click **Print**. The  Print Center icon appears in the dock on the bottom of your desktop.

11. Click the  Print Center icon. On OS X 10.2.x, double-click **Stylus C44**. You see a screen like this:



12. To monitor the progress of your print job, do one of the following:

- Click the print job, then click **Delete** to delete it
- Click the print job, then click **Hold** to pause printing
- Click a print job marked “Hold” and click **Resume** to resume printing
- If multiple print jobs are listed, click a print job, then click the **Priority** arrow to reorder the jobs (not available with Mac OS X 10.2.x).

Caution: When you’re finished using your printer, make sure you press the ⏻ power button to turn it off. Never use a power strip or external switch to turn off the printer.

Printing With the Minimize Margins Feature

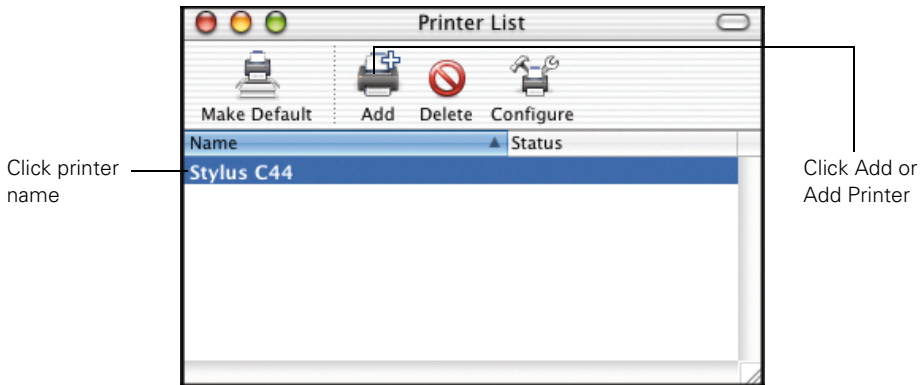
Follow the steps in the sections below to use the Minimize Margins feature if you need to print within 0.12 inch (3 mm) of the bottom of the page.

Adding the Minimize Margins Feature to Print Center

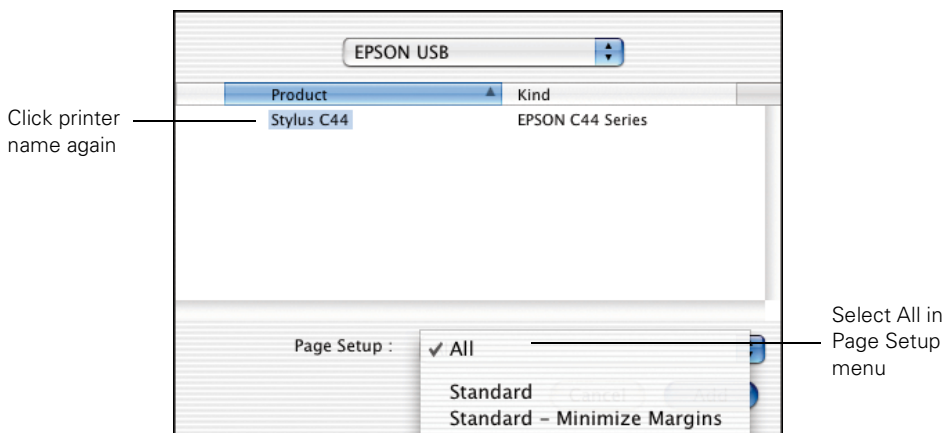
1. Open Print Center. You see the Printer List.
If your printer is shown in the list, go to step 2.

If your printer isn't listed, make sure it is turned on and connected to the Macintosh. Then go to step 2.

2. Click the printer name.

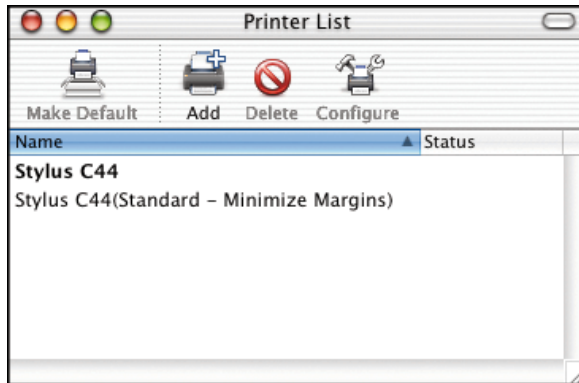


3. Click the Add or Add Printer button. You see another window listing your printer.
4. Click the printer name again. The Page Setup pull-down menu at the bottom of the screen becomes active.



5. Open the Page Setup pull-down menu and select All.

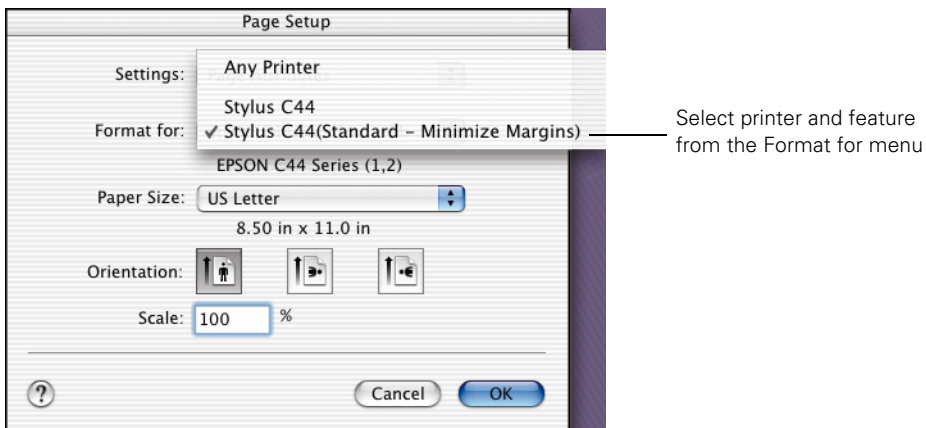
6. Click the **Add** button. You see the Printer List again with the **Minimize Margins** feature available.



7. Close Print Center.

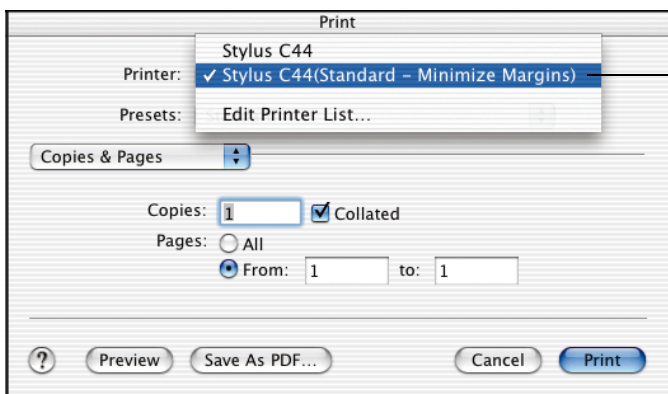
Using the Minimize Margins Feature

1. Open an application and create your print job.
2. When you're ready to print, select **Page Setup** from the File menu.
3. Open the Format for pull-down menu and select **Stylus C44 (Standard - Minimize Margins)**.



4. Select any other necessary page setup features, then click **OK**.
5. Select **Print** from the File menu.

- Open the Printer pull-down menu and select **Stylus C44 (Standard - Minimize Margins)** again. Always check to make sure you selected the same setting you chose in the Page Setup window.



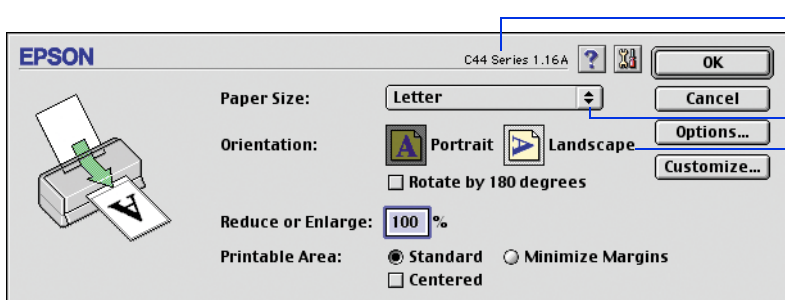
Select same printer and feature from Printer menu

- Select any other necessary print features, then click **Print**.

Printing With Macintosh OS 8.6 to 9.x

Here's what to do to print a basic document—such as a newsletter or school project—if your Macintosh is running OS 8.6 to 9.x. Make sure you have paper in the printer, as described in [Loading Paper](#). After you create your document, follow these steps to print it.

- From the File menu, select **Page Setup**. You see the following:



Make sure you see C44 Series

Select your paper size

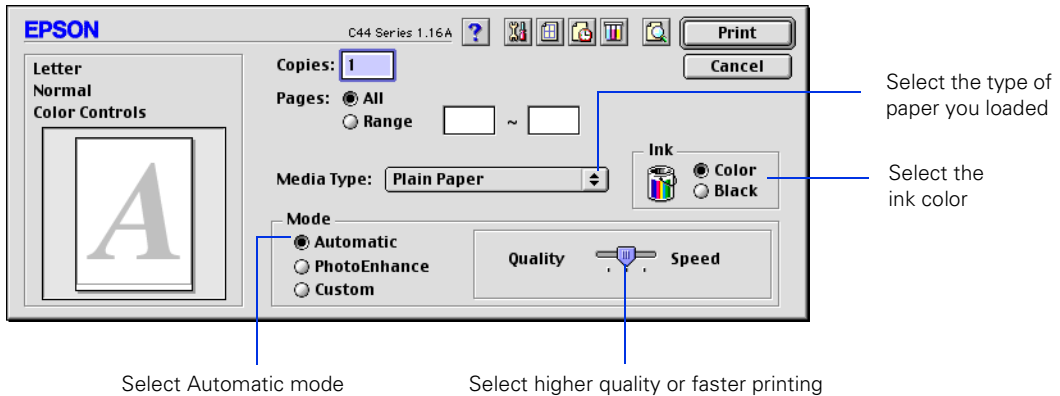
Select the orientation of your document

- Make sure **C44 Series** is selected. If not, select your printer in the Chooser.
- Select your paper size (click on the arrow to scroll through the Paper Size list).

4. If necessary, select your page orientation: **Portrait** for documents that are longer than they are wide, or **Landscape** for documents that are wider than they are long.
5. Then click **OK**.

Note: For more information about printer settings, click the **?** button.

6. From the File menu, select **Print**. You see a window like the following:



7. Make the following settings:





- Choose the paper you're printing on (click the arrow to scroll through the Media Type list). If you're not sure which setting to select, see [Selecting the Correct Paper Type](#).
- Set the Ink option to **Color** to print a color document. To print a black text document, click **Black**.
- Set the Mode option to **Automatic**. It's the easiest way to get good printing results on all types of paper.
- Set the slider in the Mode box to **Quality** or **Speed** to select high-quality printing, faster printing, or an in-between setting.

8. Click **PhotoEnhance** to improve the appearance of low-resolution and improperly exposed photos (works only when Color ink is selected).
9. Click **Custom**, and then select **ColorSync** to match the colors in your printout as closely as possible to those you see using ColorSync-compatible devices and applications.

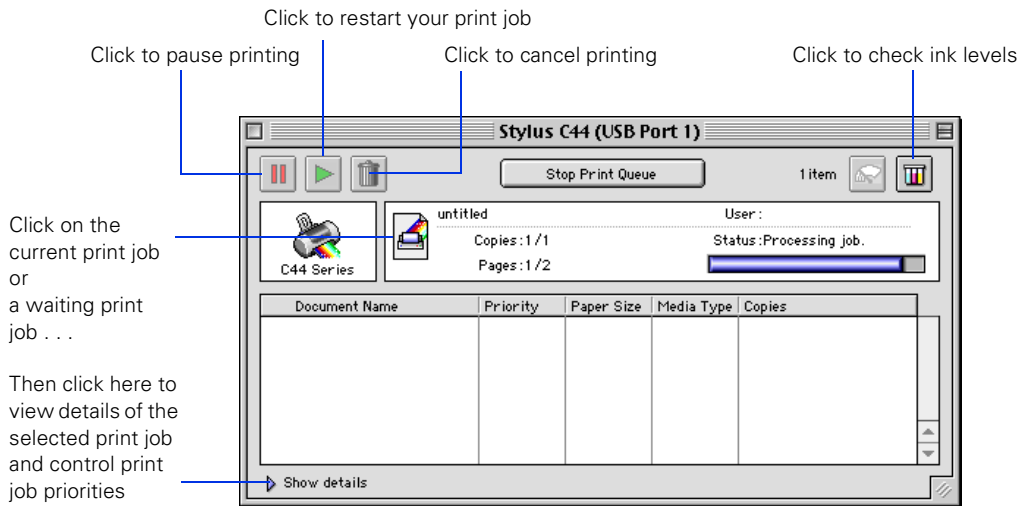
10. To select a specific print quality setting, click **Custom**, then click the **Advanced** button that appears. You see the advanced screen. Choose a setting from the Print Quality menu:

- **Economy or Economy Plus:** For printing drafts on plain paper. Saves ink. (Economy Plus is available only if you select Black ink.)
- **Normal:** For everyday printing needs.
- **Fine:** When you want a higher resolution for printing text or text and graphics.
- **Photo:** For printing photographs.
- **Photo RPM:** When you want the highest resolution for your photographs and you don't mind the longer print time.

11. You can also do the following:

- Click  to reduce or enlarge your image, print multiple layouts, or add a watermark.
- Click  to turn on background printing.
- Click  to change the **Print** button to **Preview**. You can then click it to preview your printout.
- Click  to check your ink levels.

12. Click **Print** to start printing. If you turned on background printing, you can select **EPSON MonitorIV** from the Application menu in the upper right of your screen. You see this dialog box:

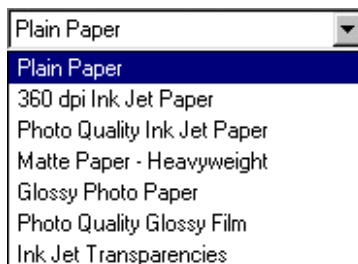


Tip: If you're not using background printing and you need to cancel printing, hold down the **⌘** key and press the **.** (period) key.

Caution: When you're finished using your printer, make sure you press the **⏻** power button to turn it off. Never use a power strip or external switch to turn off the printer.

Selecting the Correct Paper Type

Your printer automatically adjusts itself for the type of paper you select in your print settings. That's why the paper Type or Media Type setting is so important. It tells your printer what kind of paper you're using and adjusts the ink coverage accordingly.



The table below lists the settings you should choose for your paper:

For this paper . . .	Select this Type or Media Type setting . . .
Plain paper sheets or envelopes EPSON Premium Bright White Paper	Plain paper
EPSON High Quality Ink Jet Paper EPSON Photo Quality Ink Jet Paper EPSON Photo Quality Ink Jet Cards EPSON Photo Quality Self Adhesive Sheets	Photo Quality Ink Jet Paper
EPSON Matte Paper Heavyweight EPSON Double-Sided Matte Paper	Matte Paper - Heavyweight
EPSON Glossy Photo Paper EPSON Photo Paper EPSON All-Purpose Glossy Paper EPSON Photo Quality Glossy Paper EPSON Glossy Photo Greeting Cards	Glossy Photo Paper
EPSON Photo Stickers	Photo Quality Glossy Film
EPSON Ink Jet Transparencies	Ink Jet Transparencies

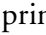

Cleaning the Print Head

- [Running the Head Cleaning Utility](#)
- [Examining the Nozzle Check Pattern](#)

If your printouts are unexpectedly light, or dots or lines are missing from the image, you may need to clean the print head. This unclogs the nozzles so they can deliver ink properly.

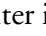




Print head cleaning uses ink, so clean it only if quality declines.

This section explains how to clean the print head using the Head Cleaning utility. This is the recommended method when the printer is connected directly to your computer (not over a network).

You can also clean the print head by holding down the  maintenance button on the printer for three seconds (when the red  error light is off).

Caution: When you don't turn on your printer for a long time, the print quality can decline. It's a good idea to turn on your printer at least once a month to maintain good print quality.

Running the Head Cleaning Utility

1. Make sure the printer is turned on but not printing, and the red  error light is off. (If the red light is flashing or on, you may need to replace the ink cartridge; see [Replacing an Ink Cartridge](#) for details.)
2. Do one of the following:
 - **Windows:** Right-click the  printer icon on your taskbar (in the lower right corner of your screen). Select **Head Cleaning**.
 - **Macintosh OS X:** Double-click the **Applications** folder on your hard drive. Double-click **EPSON Printer Utility**, select the **C44 Series** printer, and click **OK**. Then click **Head Cleaning**.
 - **Macintosh OS 8.6 to 9.x:** Open the File menu and choose **Page Setup** or **Print**. Click the  utility button, then click the  **Head Cleaning** button.
3. Follow the instructions on the screen to clean the print head. Cleaning takes about 30 seconds, during which the printer makes some noise and the green  power light flashes.

Caution: Never turn off the printer while the ⏻ power light is flashing, unless the printer hasn't moved or made noise for more than 5 minutes.

4. When the ⏻ power light stops flashing, run a nozzle check to confirm the print head nozzles are clean.

Make sure plain paper is loaded in the printer and click **Print Nozzle Check Pattern**. Then click **Print**. The nozzle check pattern prints (see the next section for details).

5. If the nozzle check pattern has no gaps or lines, click **Finish**.

If the pattern has white lines, click **Clean** to clean the print head again.

If you don't see any improvement after cleaning three or four times, check the solutions in [Problems and Solutions](#). You can also turn the printer off and wait overnight—this allows any dried ink to soften—and then try cleaning the print head again.

Examining the Nozzle Check Pattern

Examine the nozzle check pattern you print. Each colored square should be solid, with no gaps or lines, as shown:



If your printout looks okay, you're done.

If you see any white lines or gaps (as shown), clean the print head again; see [Running the Head Cleaning Utility](#) for instructions.



Purchasing Ink Cartridges

Use these EPSON ink cartridges within six months of installing them and before the expiration date on the package:

- Black ink cartridge: T036
- Color ink cartridge: T037

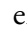

Caution: To ensure good results, use genuine EPSON ink cartridges and do not refill them. Other products may cause damage to your printer not covered by EPSON's warranty.


When you need new ink cartridges, contact your dealer or call EPSON at (800) 873-7766 or visit the EPSON Store at www.epsonstore.com (U.S. sales only). In Canada, please call (800) 463-7766 for dealer referral.


Replacing an Ink Cartridge

- [Checking the Ink Supply](#)
- [Ink Cartridge Precautions](#)
- [Removing and Installing Ink Cartridges](#)


Checking the Ink Supply

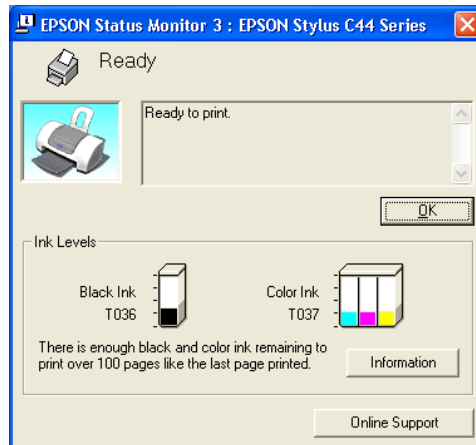
When the red  error light flashes, an ink cartridge is low on ink. This is a good time to make sure you have a new cartridge. When the red  error light stays on, you may need to replace one of the cartridges.


Note: The red  error light also comes on if your paper runs out or is jammed, so make sure you check your paper before replacing a cartridge.

When a cartridge is more than six months old, you may need to replace it if printouts don't look their best. If the quality doesn't improve after cleaning and aligning the print head, you can replace the cartridge even if the  error light is off.

To check your ink supply, do one of the following:

- **Windows:** Double-click the  printer icon on your taskbar (in the lower right corner of your screen). You'll see a window like the one below showing the ink remaining in each cartridge.



- **Macintosh OS X:** Double-click the **Applications** folder on your hard drive. Double-click **EPSON Printer Utility**, select the **C44 Series** printer, and click **OK**. Then click **EPSON StatusMonitor**. You see a window showing the ink remaining in each cartridge.
- **Macintosh OS 8.6 to 9.x:** Open the **File** menu and choose **Print**. Click the  ink icon. You see a window showing the ink remaining in each cartridge.

Ink Cartridge Precautions

Warning: Keep ink cartridges out of the reach of children and do not drink the ink.



If ink gets on your hands, wash them thoroughly with soap and water. If ink gets in your eyes, flush them thoroughly with water.

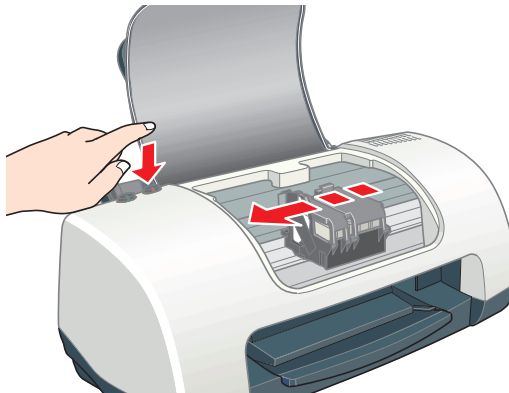
Caution: To avoid damaging the printer, never move the print head (ink cartridge holders) by hand.

You cannot print if either ink cartridge is empty. Leave the empty cartridge installed in the printer until you have obtained a replacement. Otherwise the ink remaining in the print head nozzles may dry out.

Removing and Installing Ink Cartridges

Be sure you have a new ink cartridge before you begin. Once you start the ink cartridge replacement procedure, you must complete all the steps in one session.

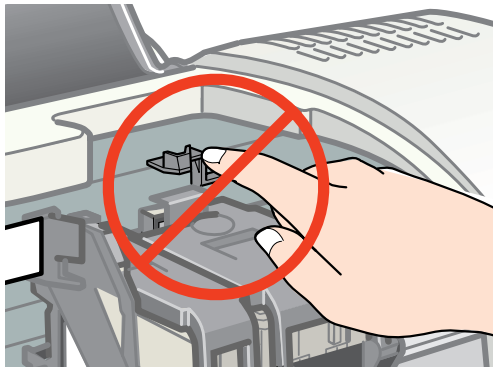
1. Make sure the printer is turned on and not printing (the green  power light should be on, but not flashing). Then open the printer cover.
2. Press the  maintenance button for 6 seconds. The print head moves to the cartridge replacement position.



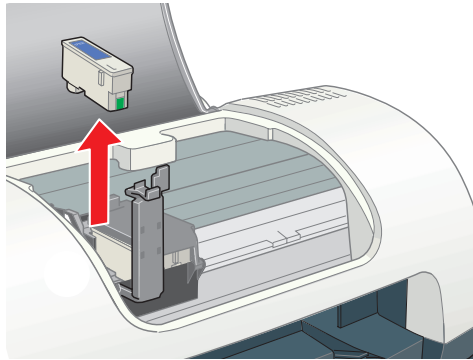
Note: If both cartridges need replacing, the print head moves to the black cartridge position first.

The black cartridge is on the left, and the color cartridge is on the right.

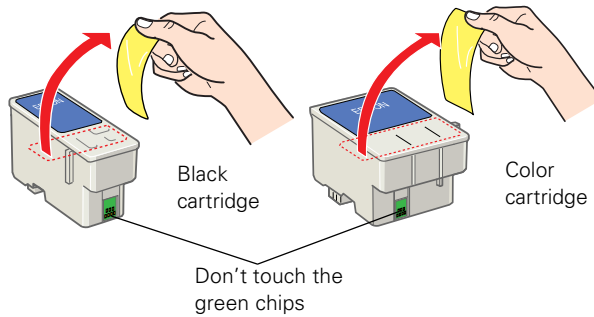
Caution: Don't touch the ink cartridge sensor above the print head, as shown below:



3. Pull up the ink cartridge clamp and remove the cartridge. Dispose of it carefully.



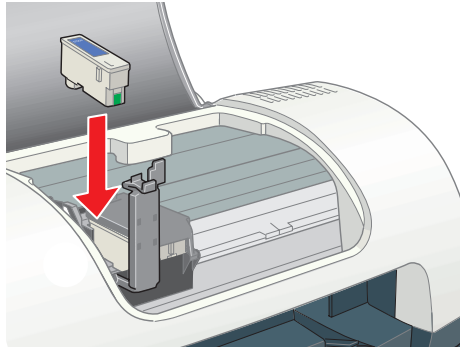
4. Unpack the new cartridge and remove the yellow tab.



Caution: You must remove the yellow tape from the top of the cartridge or you will permanently damage it.

Be careful not to touch the green chip on the front of the cartridge; you might damage the cartridge.

5. Insert the new cartridge and press down firmly on the clamp. Make sure the clamp is closed completely.



6. Press the ⏻ maintenance button.

If the other cartridge needs to be replaced, the print head moves into loading position. Repeat step 3 through step 6.

Caution: Don't move the print head by hand; you could damage the printer. Always use the ⏻ maintenance button.

7. Wait until ink charging is finished. (The green ⏻ power light stops flashing and the red ⏻ error light goes out.) Ink charging takes about 30 seconds.
8. Close the printer cover.




Now you're ready to print again.

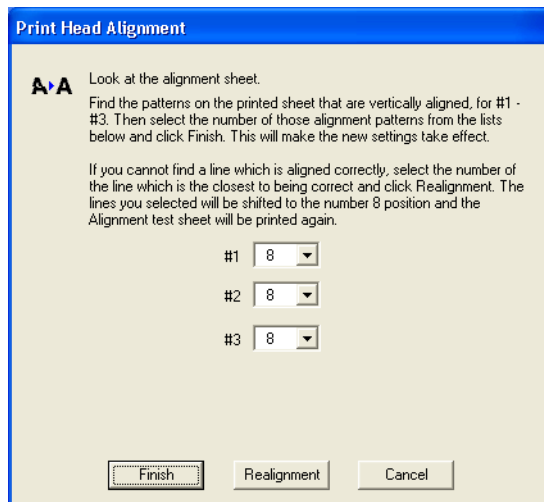
If the red ⏻ error light remains on and the printer continues to make noise for more than five minutes, open the printer cover and press the ⏻ power button to turn the printer off. Then make sure that the ink cartridge clamps are completely closed. Close the printer cover and press the ⏻ maintenance button to finish ink charging. If that doesn't work, contact EPSON as described in [Where To Get Help](#).

Aligning the Print Head

If your printouts contain misaligned vertical lines, you may need to align the print head. Your printer must be connected directly to your computer (not over a network) to use the Print Head Alignment utility.

Caution: Load plain paper that's at least 8.27 inches (210 mm) wide to prevent ink from spraying inside the printer and smudging your printouts.

1. Make sure the printer is turned on, but not printing, and letter-size plain paper is loaded.
2. Do one of the following:
 - **Windows:** Right-click the  printer icon on your taskbar (in the lower right corner of your screen) and select **Print Head Alignment**.
 - **Macintosh OS X:** Double-click the **Applications** folder on your hard drive. Double-click **EPSON Printer Utility**, select the **C44 Series** printer, and click **OK**. Then click **Print Head Alignment**.
 - **Macintosh OS 8.6 to 9.x:** Open the **File** menu and choose **Page Setup** or **Print**. Click the  utility button, then click the  **Print Head Alignment** button.
3. Follow the instructions on the screen to print a test page. You see this window:



4. On the printed page, select the pattern that shows the two vertical lines most precisely printed on top of each other. You may need to use a magnifying glass. Select one pattern each for rows 1, 2, and 3. Then enter the number of the best pattern for each row in the corresponding boxes on the screen.
5. Click **Realignment** to print another test page. Make sure the pattern numbered 8 in each row is the best aligned. If not, repeat step 4 and step 5.

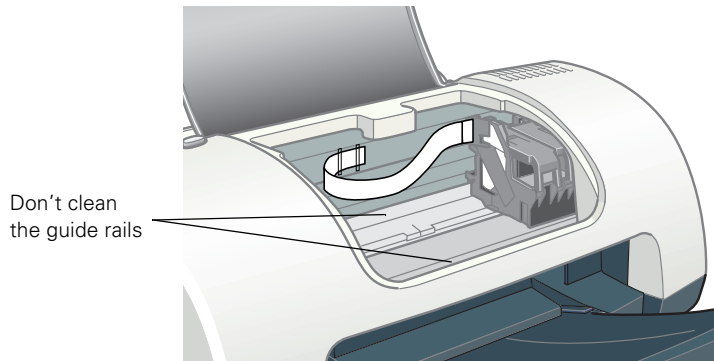
6. When you're finished, click **Finish**.

Cleaning the Printer

To keep your printer working at its best, you should clean it several times a year.

1. Turn off the printer and disconnect the USB cable and power cord.
2. Remove all paper, then use a soft brush to clean any dust or dirt from the sheet feeder.
3. Clean the exterior of the printer with a soft, damp cloth.

Caution: Don't clean or remove the grease from the guide rails shown below.



Caution: Don't touch any gears inside the printer.

Never use a hard or abrasive brush, or alcohol or thinner for cleaning; they can damage the printer components and case.

Don't get water on the printer components and don't spray lubricants or oils inside the printer.

Don't use any cleaning sheets included with special paper; they may jam inside the printer.

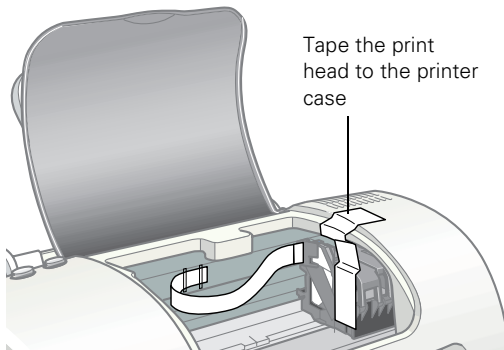
Transporting the Printer

If you move your printer some distance, you need to prepare it for transportation in its original box or one of a similar size.

Caution: To avoid damage, always leave the ink cartridges installed when transporting the printer.

Be sure to remove the tape used in step 4 after installing the printer in its new location.

1. Turn on the printer, wait until the print head (ink cartridge holders) locks in the far right position, then turn off the printer.
2. Unplug the power cord from the electrical outlet. Then disconnect both the printer cable and the power cord from the printer.
3. Remove any paper from the printer and remove the paper support.
4. Open the printer cover. Secure the print head to the printer with tape as shown, then close the printer cover.

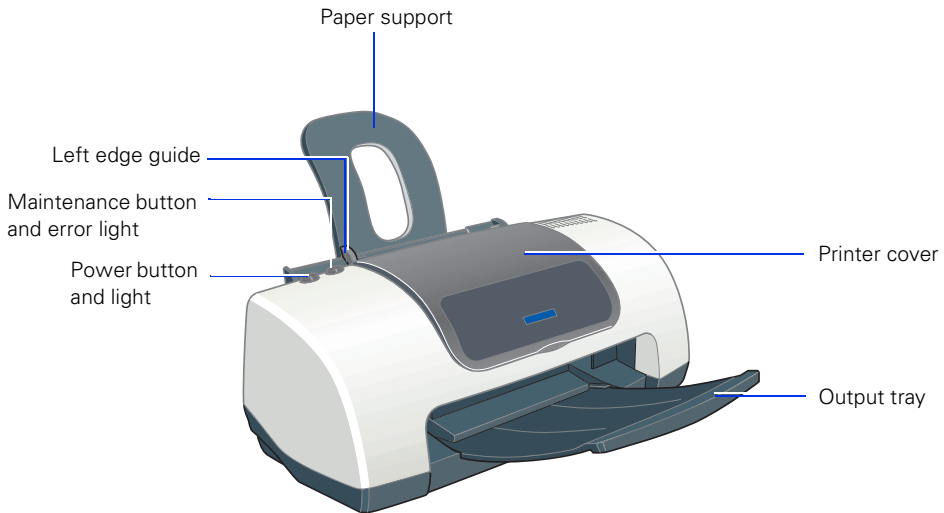


5. Push in the output tray.
6. Repack the printer and its attachments in the original box using the protective materials that came with them.

Keep the printer level as you transport it.

After transporting the printer, remove the tape securing the print head and test your printer. If you notice a decline in print quality, clean the print head (see [Cleaning the Print Head](#)); if output is misaligned, align the print head (see [Aligning the Print Head](#)).

Printer Parts





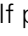
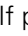

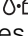

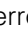


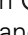
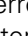
Diagnosing Printer Problems

- Checking the Printer's Lights
- Running a Printer Check

Checking the Printer's Lights

If the printer's lights come on or flash, check the explanations listed below.




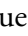
Lights	Explanation
Green  power light flashes	The printer is receiving a print job, replacing an ink cartridge, charging ink, or cleaning the print head.

<p>Red  error light is on</p>	<p>Your paper ran out, ink ran out, or paper is jammed. You may also see a message on your screen.</p> <p>If paper is out, load more paper, then press the  maintenance button to resume printing.</p> <p>If paper is jammed, press the  maintenance button to eject the paper. If that doesn't work, turn off the printer, open the cover, and pull the paper out from the front, including any torn pieces. Then turn on the printer, reload paper, and press the  maintenance button.</p> <p>If you see an ink out message on your screen, you need to replace one of your ink cartridges as described in Replacing an Ink Cartridge.</p>
<p>Red  error light flashes</p>	<p>One of the ink cartridges is low. Make sure you have a replacement cartridge. To determine which cartridge is low, check the ink level as described in Checking the Ink Supply.</p>
<p>Green  power light is off and red  error light is on</p>	<p>Paper may be blocking movement of the print head. Turn off the printer, open the cover, and remove any jammed paper or other foreign objects. Then turn the printer on again. If the lights are still on, contact your dealer or EPSON; see Where To Get Help for contact information.</p>
<p>Green  power light and red  error light flash</p>	<p>The printer may have an internal error. Turn off the printer, wait a few seconds, and turn it on again. If the lights are still flashing, contact your dealer or EPSON; see Where To Get Help for contact information.</p>
<p>Green  power light and red  error light are on after installing an ink cartridge</p>	<p>One of your ink cartridges is installed incorrectly. Follow the instructions in Removing and Installing Ink Cartridges to reinstall the cartridge.</p>

Running a Printer Check

You can run a printer check to determine whether a problem comes from the printer itself or some other source. The printer check also shows how much black and color ink you have left.

1. Make sure both the printer and computer are turned off. Then disconnect the USB cable from the printer.

2. Make sure letter-size or larger plain paper is loaded in the printer.
3. Hold down the  maintenance button, then press and release the  power button. Continue holding down the  maintenance button until the green  power light starts to flash, then release it.

The printer prints one page showing its ROM version number, the ink counter code, and a nozzle check pattern. (If the pattern has lines, you need to clean the print head; see [Cleaning the Print Head](#).)

4. Turn off the printer after it prints the check page. Then reconnect the cable and turn on your printer and computer.
 - If the check page prints, the problem probably lies in your software settings, the USB cable, or your computer. It's also possible that your software may not be installed correctly. See [Reinstalling Printer Software](#) for instructions on reinstalling the printer software.
 - If the check page doesn't print, you may have a problem with your printer. Try the suggestions in [Problems and Solutions](#). If nothing works, contact your dealer or EPSON as described in [Where To Get Help](#).

Problems and Solutions

- [Setup and Software Installation Problems](#)
- [Printer Problems](#)
- [Print Quality Problems](#)
- [Paper Feeding Problems](#)
- [Miscellaneous Printout Problems](#)

Setup and Software Installation Problems

Tip: It's a good idea to check EPSON's support web site periodically for free updates to your printer driver. Visit <http://support.epson.com>. Download instructions are posted for your convenience.

The printer makes noise after ink cartridge installation.

- The first time you install ink cartridges, the printer must charge its print head for about 90 seconds. Wait until charging finishes (the green ⏻ power light stops flashing) before you turn off the printer, or it may charge improperly and use excess ink the next time you turn it on.

If the printer stops moving or making noise, but the green ⏻ power light is still flashing after 5 minutes, turn off the printer. If the light is still flashing when you turn it back on, contact EPSON as described in [Where To Get Help](#).

- Turn off the printer, then make sure the ink cartridge clamps are locked down completely and no packing material remains in the printer. Wait a moment, then turn the printer back on to clear the error.

You're having problems installing the printer software.

- Make sure your printer is turned on and the USB cable is securely connected at both ends. Then carefully follow the installation instructions on the *Start Here* sheet or the *Installing Software for Windows 98, Windows Me, and Windows 2000* booklet. Also make sure your system meets the requirements listed in [System Requirements](#).
- Close your other programs, including any screen savers and virus protection software, and install again.
- If you're running Macintosh OS 8.6 to 9.x and your printer icon (C44 Series) doesn't appear in the Macintosh Chooser, you may have too many items in the Chooser. Delete any unused items and check the Chooser again.
- For Windows 2000, if you see an error message or your software doesn't install correctly, you may not have software installation privileges. Contact your System Administrator.
- In Windows 2000 or XP, don't select **Block** under **Control Panel > System > Hardware > Driver Signing**; select **Ignore** or **Warn** instead.
- Make sure your Windows system was not upgraded from Windows 95. The USB Printer Device Driver may not install correctly.
- Make sure the USB Controller is working properly in Device Manager. See your Windows help system for details. If it's not working, contact your computer manufacturer.

Printer Problems

Only the green power light is on, but nothing prints.

- Make sure the USB cable is connected securely and that the cable meets the requirements listed in [System Requirements](#).
- Run a printer check as described in [Running a Printer Check](#). If the check page prints, make sure your software is installed correctly.

The printer sounds as though it is printing, but nothing prints.

- Make sure the print head nozzles are not clogged. To clean the print head, see [Cleaning the Print Head](#).
- The printer won't operate properly if it's tilted or at an angle. Place it on a flat, stable surface that extends beyond the printer base in all directions.

Your printer makes noise when you turn it on or after it has been sitting for awhile.

Your printer is performing routine maintenance.

Printing is too slow.

Make sure your system meets the requirements listed in [System Requirements](#). If you're printing a high-resolution image, you need more than the minimum requirements listed. You may also need to:

- Clear space on your hard drive or run a defragmentation utility.
- Close programs that you're not using.
- Increase your system's memory.

For the fastest printing, try these tips:

- Choose black ink in your printer software if your document doesn't include color.
- For Windows, choose **Draft** for Quality Type.
- For Macintosh, set the Quality/Speed slider to **Speed**.
- If your printer is connected to a hub, disconnect unused USB devices.

Print Quality Problems

You see banding (light lines).



- The print head nozzles may need cleaning; see [Cleaning the Print Head](#) for instructions.
- Make sure the paper Type or Media Type setting matches the paper you loaded; see [Selecting the Correct Paper Type](#) for guidelines.
- Make sure the printable side of the paper is face up. It's usually whiter or shinier.
- The ink cartridges may need replacing; see [Replacing an Ink Cartridge](#) for instructions.
- If you have a Macintosh, try using Automatic mode. See [Printing With Macintosh OS X](#) or [Printing With Macintosh OS 8.6 to 9.x](#) for instructions.
- Run the Print Head Alignment utility; see [Aligning the Print Head](#) for instructions.

Your printout is blurry or smeared.



- Make sure your paper isn't damp or curled, or loaded face down (the printable side should be face up).
- Use a support sheet with special paper, or try loading your paper one sheet at a time.
- Use EPSON papers to ensure proper saturation and absorption of genuine EPSON inks.
- Remove each sheet from the output tray as it is printed, especially if you're printing on transparencies.
- Avoid handling printouts on glossy paper or transparencies for a few hours to allow the ink to set.
- If ink smears on the back of a printout, clean the inside of the printer as described in [Cleaning the Printer](#).

Your printout is faint or has gaps.



- The print head nozzles may need cleaning; see [Cleaning the Print Head](#) for instructions.
- The ink cartridges may be old or low on ink. See [Replacing an Ink Cartridge](#) for details.
- Make sure the paper Type or Media Type setting matches the paper you loaded. See [Selecting the Correct Paper Type](#) for guidelines.
- Make sure your paper isn't damaged, old, dirty, or loaded face down. If it is, reload a new stack of paper with the printable side up; it is usually whiter or shinier than the other side.

You see wrong or missing colors.


- Make sure your printer software is not set to use black ink only.
- The print head nozzles may need cleaning; see [Cleaning the Print Head](#) for instructions.
- The ink cartridges may be old or low on ink. See [Replacing an Ink Cartridge](#) for details.
- Try turning off PhotoEnhance.
- For Macintosh, try using Automatic mode.
- For Macintosh, try changing the Gamma setting; see [Printing With Macintosh OS X](#) or [Printing With Macintosh OS 8.6 to 9.x](#).
- Your printed colors can never exactly match your on-screen colors. However, you can use a color management system to get as close as possible. Try using the ICM (Windows) or ColorSync (Macintosh) setting.

Your printout is grainy.

- Try using a higher quality paper.
- Select Photo RPM for Quality Type (Windows) or Print Quality (Macintosh). Remember that this setting increases print time.
- Run the Print Head Alignment utility; see [Aligning the Print Head](#) for instructions.
- You may need to increase the image resolution or print it in a smaller size; see your software documentation.

Paper Feeding Problems

Paper doesn't eject fully or is wrinkled.

- If the paper doesn't eject fully, you may have set the wrong paper size. Press the  maintenance button to eject the paper, and then select the correct paper size.
- If it's wrinkled when it ejects, the paper may be damp or too thin. See [Paper](#) for paper specifications.

Paper doesn't feed correctly or jams in the printer.

- If paper doesn't feed, remove it from the sheet feeder. Reload it against the right edge, behind the tabs, then slide the left edge guide against the paper.
- If multiple pages feed at once, remove the paper from the sheet feeder, fan the edges to separate the sheets, then reload it.
- If paper jams, press the ⏏ maintenance button for several seconds to clear the jam. If that doesn't work, open the cover and pull the paper out from the front, including small pieces that may have torn off. Reload the paper and press the ⏏ maintenance button.

If your paper loads incorrectly or jams frequently:

- Use new, smooth, high-quality paper, loaded printable side up.
- Fan the edges of the stack of paper to separate the sheets.
- Don't load paper above the arrow mark inside the left edge guide.
- Place the paper against the right edge behind the tab. Slide the left edge guide against it, but not too tightly.

Miscellaneous Printout Problems

The image is inverted, as if viewed in a mirror.

- Turn off the mirror setting in your application program.
- For Macintosh, turn off **Flip Horizontal** in the Advanced window of your printer driver (Macintosh OS 8.6 to 9.x) or Print Settings window (Macintosh OS X).

The printer prints blank pages.

- Make sure your printer is selected in Windows. For Macintosh OS X, open the Print Center and make sure your printer is selected in the Printer List. For Macintosh OS 9.x or earlier, make sure your printer is selected in the Chooser.
- The print head nozzles may need cleaning; see [Cleaning the Print Head](#) for instructions.

The margins are incorrect.

- Make sure the paper settings are correct for your paper size. For instructions, see [Printing in Windows](#), [Printing With Macintosh OS X](#), or [Printing With Macintosh OS 8.6 to 9.x](#).
- Use the **Print Preview** option in your printer software to check your margins before you print.
- Make sure your paper is positioned next to the right side of the feeder.

You see incorrect characters.

- Make sure the USB cable is securely connected and meets the requirements in [System Requirements](#). Then try printing again.
- Make sure your printer is selected in your software, or is set as the active printer in the Macintosh Chooser (OS 8.6 to 9.x) or Print Center (OS X).
- If you're using a switch box or USB hub with your printer, connect the printer directly to your computer.

Reinstalling Printer Software


- [Windows](#)
- [Macintosh OS X](#)
- [Macintosh OS 8.6 to 9.x](#)

Windows

You can reinstall your printer software over your currently installed printer software. Make sure the printer is connected to your computer, then follow these steps:

1. Turn the printer on. Then insert the EPSON CD-ROM in your drive. If you see the Options Menu, go to step 3.

If you don't see the Options Menu, continue with step 2.



2. **Windows XP:** Click **Start**, then click **My Computer**. Double-click  **EPSON**. You see the Options Menu.

Other Windows systems: Double-click **My Computer** on your desktop, then double-click  **EPSON**. You see the Options Menu.

3. Click **Reinstall Printer Driver**. Then follow the instructions on the screen to reinstall your driver.
4. Click **Exit** to close the Options Menu.


Macintosh OS X

You can reinstall your printer software over your currently installed printer software. Follow these steps:

1. Insert the EPSON CD-ROM in your drive.
2. Double-click the  **EPSON CD-ROM** icon, and then double-click the  **EPSON OSX Installer** icon.
3. At the Main Menu, select **Install Printer Driver**. (You may be asked to enter an administrator password.)
4. Follow the on-screen instructions to upgrade the printer software and restart your Macintosh.

Macintosh OS 8.6 to 9.x

Follow these steps to uninstall your printer software first:

1. Insert your printer software CD-ROM.
2. Double-click the **EPSON CD-ROM** icon (if necessary) and double-click the  **EPSON OS9 Installer** icon. The Main Menu appears.
3. Click **Install Printer Driver**. On the installer screen, click the arrow in the Easy Install list at the top and select **Uninstall**. Then click the **Uninstall** button at the bottom and follow the instructions.
4. Restart your Macintosh, then follow the instructions on the *Start Here* sheet to reinstall your software.

Where To Get Help

EPSON provides technical assistance 24 hours a day through the electronic support services and automated telephone services listed below:

Service	Access
World Wide Web	From the Internet, you can reach EPSON Support at http://support.epson.com . At this site, you can download drivers and other files, look at product documentation, access troubleshooting information, and receive technical advice through e-mail.
Automated Telephone Services	A variety of automated help services are available 24 hours a day, seven days a week. To use these services, you must have a touch tone telephone and call (800) 922-8911 . Your SoundAdvice SM Express Code is 70440. Use this code to quickly select the EPSON Stylus C44 in SoundAdvice.

You can purchase ink cartridges, paper, manuals, and accessories from EPSON at (800) 873-7766, or visit the EPSON Store at www.epsonstore.com (U.S. sales only). In Canada, please call (800) 463-7766 for dealer referral.

System Requirements

- [Windows System Requirements](#)
- [Macintosh System Requirements](#)

Windows System Requirements

To use your printer and its software, your system should have:

- A Microsoft® Windows compatible PC with a Pentium®-equivalent processor (233 MHz or faster recommended)
- Microsoft Windows XP, Windows 2000, Windows Me, or Windows 98
- At least 64MB RAM (128MB recommended)
- 100MB free hard disk space (200MB or more recommended)
- VGA or better display adapter and monitor
- 2x CD-ROM or DVD drive for installing the printer software (4x or faster recommended)
- A shielded USB “AB” cable up to 6.5 feet (2 meters) long.

Macintosh System Requirements

To use your printer and its software, your system should have:

- An Apple iMac™ series or Power Macintosh® G3 or G4 with built-in USB port
- Macintosh OS 8.5.1 through 9.x, OS X 10.1 or higher (Macintosh OS 9.0 or later recommended)
- At least 32MB RAM for OS 8.6 through OS 9.x (64MB recommended); 128MB RAM recommended for OS X
- At least 100MB free hard disk space (200MB recommended)
- VGA display or better
- 2x CD-ROM or DVD drive for installing the printer software (4x or faster recommended)

- A shielded USB “AB” cable up to 6.5 feet (2 meters) long.

Specifications

- Printing
- Paper
- Ink Cartridges
- Mechanical
- Electrical
- Environmental
- Safety Approvals

Printing

Printing method	On-demand ink jet
Nozzle configuration	Black: 48 nozzles Color: 45 nozzles (15 each: cyan, magenta, yellow)
Print direction	Bidirectional with logic seeking
Input buffer	12KB

Paper

Note: Poor quality paper may reduce print quality and cause paper jams or other problems. If you encounter problems, switch to a higher grade paper.

Do not load curled or folded paper.

Avoid extremes in temperature or humidity when printing. Optimum printing temperature ranges from 55 to 77 °F, and optimum humidity ranges from 40 to 60% RH.

Store EPSON Self-Adhesive Sheets under the following conditions: 59 to 86 °F, and 20 to 60% RH.

Plain Paper, All-Purpose Glossy Paper, Premium Bright White Paper, Photo Quality and High Quality Ink Jet Paper

Size	Letter (8.5 x 11 inches) Half letter (5.5 x 8.5 inches) Legal (8.5 x 14 inches) Executive (7.25 x 10.5 inches) A4 (8.3 x 11.7 inches) A5 (5.8 x 8.27 inches) User-defined: Width: 3.5 to 9.5 inches Length: 3.5 to 44 inches
Paper types	Plain bond paper or special paper distributed by EPSON
Thickness (for plain bond paper)	0.003 to 0.004 inch
Weight (for plain bond paper)	17 to 24 lb (64 to 90 g/m ²)

Envelopes

Size	No. 10 (4.13 x 9.5 inches) DL (4.33 x 8.7 inches) C6 (4.49 x 6.38 inches) 132 x 220 mm (5.2 x 8.7 inches)
Paper types	Plain bond paper, airmail
Thickness	0.006 to 0.02 inch
Weight	12 to 20 lb (45 to 75 g/m ²)

Glossy Photo Paper and Photo Paper

Size	Letter (8.5 x 11 inches) 4 x 6 inches Panoramic (8.3 x 23.4 inches) A4 (8.3 x 11.7 inches)
Paper types	Special paper distributed by EPSON

Ink Jet Cards

Size	A6 (4.1 x 5.8 inches)
Paper types	Special paper distributed by EPSON

Transparencies, Photo Quality Glossy Paper, and Glossy Photo Greeting Cards

Size	Letter (8.5 x 11 inches)
Paper types	Special paper distributed by EPSON

Self Adhesive Sheets

Size	A4 (8.3 x 11.7 inches)
Paper types	Special paper distributed by EPSON

Photo Stickers

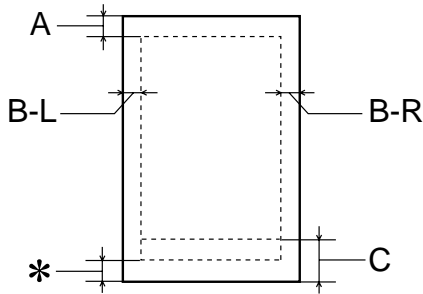
Size	A6 (4.1 x 5.8 inches) with 16 frames
Paper types	Special paper distributed by EPSON

Matte Paper Heavyweight and Double-Sided Matte Paper

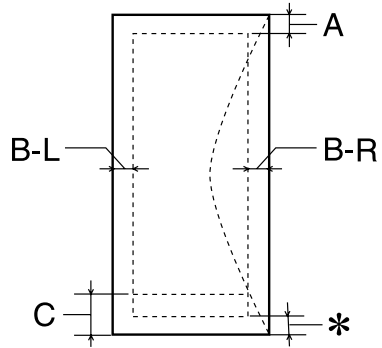
Size	Letter (8.5 x 11 inches)
------	--------------------------

Paper types	Special paper distributed by EPSON
-------------	------------------------------------

Printable Area



Single sheets or ink jet cards



Envelopes

Minimum top margin (A)	0.12 inch (3.0 mm)
Minimum left margin (B-L)	0.12 inch (3.0 mm)
Minimum right margin (B-R)	0.12 inch (3.0 mm)
Minimum bottom margin (C)	0.49 inch (12.5 mm)

Note: You can extend the minimum bottom margin to 0.12" (3 mm) using the Minimize Margins feature, however print quality may decline in the expanded area. Before printing large jobs using an extended margin setting, print a single sheet to confirm printout quality.

Ink Cartridges

Specification	Black cartridge (T036)	Color cartridge (T037)
Color(s)	Black	Cyan, Magenta, Yellow
Print capacity*	330 pages using ISO Letter Pattern 10561, 220 pages at 5% in calculation, except for the initial ink cartridge	180 pages, 5% each CMY (total 15%) in calculation, except for initial ink cartridge
Cartridge life	Within 6 months after opening package at 77 °F (25 °C)	
Storage temperature	-4 to 104 °F (-20 to 40 °C) 1 month at 104 °F (40 °C)	
Transit temperature	-22 to 140 °F (-30 to 60 °C) 1 month at 104 °F (40 °C); 120 hours at 140 °F (60 °C)	
Freezing temperature**	3.2 °F (-16 °C)	-0.4 °F (-18 °C)
Dimensions (W x D x H)	0.78 x 2.08 x 1.52 inches (19.8 x 52.7 x 38.5 mm)	1.69 x 2.08 x 1.52 inches (42.9 x 52.7 x 38.5 mm)

* The figure given is based on continuous printing after ink replacement. The actual print capacity may vary.

** Ink thaws and is usable after approximately 3 hours at 77 °F (25 °C).

Caution: To ensure good results, use genuine EPSON cartridges and do not refill them. Other products may cause damage to your printer not covered by EPSON's warranties.

Don't use an ink cartridge if the date on the package has expired.

Mechanical

Paper feed method	Friction
Paper path	Sheet feeder, top entry
Sheet feeder capacity	100 sheets of 17 lb (65.8 g/m ²) paper
Dimensions	Storage Width: 16.7 inches (423 mm) Depth: 9.0 inches (229 mm) Height: 6.8 inches (172 mm) Printing Width: 16.7 inches (423 mm) Depth: 18.1 inches (459 mm) Height: 10.9 inches (277 mm)
Weight	5.47 lb (2.48 kg) without the ink cartridges

Electrical

Input voltage range	90 to 264 V
Rated frequency range	50 to 60 Hz
Input frequency range	49.5 to 60.5 Hz
Rated current	0.4 to 0.2 A
Power consumption	Approximately 19 W (ISO10561 Letter Pattern) Approximately 3.0 W Sleep mode Approximately 2.7 W Power Off mode

Note: Check the label on the back of the printer for your printer's voltage.

Environmental

Temperature	Operation: 50 to 95 °F (10 to 35 °C) Storage** : -4 to 140 °F (-20 to 60 °C) 1 month at 104 °F (40 °C) Transit** : -4 to 140 °F (-20 to 60 °C) 120 hours at 140 °F (60 °C)
Humidity (without condensation)	Operation: 20 to 80% RH Storage** : 5 to 85% RH

Note: Stored in shipping container

Safety Approvals

Safety standards	UL 1950, CSA C22.2 No. 950
EMC	FCC part 15 subpart B class B CSA C108.8 Class B

Appendix

- Copyright Notice
- A Note Concerning Responsible Use of Copyrighted Materials
- Trademarks

Copyright Notice

All rights reserved. No part of this publication may be reproduced, stored in a retrieval system, or transmitted in any form or by any means, electronic, mechanical, photocopying, recording, or otherwise, without the prior written permission of SEIKO EPSON CORPORATION. The information contained herein is designed only for use with this EPSON printer. EPSON is not responsible for any use of this information as applied to other printers.

Neither SEIKO EPSON CORPORATION nor its affiliates shall be liable to the purchaser of this product or third parties for damages, losses, costs, or expenses incurred by purchaser or third parties as a result of: accident, misuse, or abuse of this product or unauthorized modifications, repairs, or alterations to this product, or (excluding the U.S.) failure to strictly comply with SEIKO EPSON CORPORATION's operating and maintenance instructions.

SEIKO EPSON CORPORATION shall not be liable for any damages or problems arising from the use of any options or any consumable products other than those designated as Original EPSON Products or EPSON Approved Products by SEIKO EPSON CORPORATION.

A Note Concerning Responsible Use of Copyrighted Materials

Ink jet printers, like photocopiers, conventional cameras, digital cameras, and scanners, can be misused by improper copying and reprinting of copyrighted material. While some countries' laws permit limited copying of copyrighted material in certain circumstances, those circumstances may not be as broad as some people assume. EPSON encourages each user to be responsible and respectful of the copyright laws when using ink jet printers, scanners, and digital cameras.

Trademarks

EPSON, EPSON Stylus, and EPSON Photo Stickers are registered trademarks of SEIKO EPSON CORPORATION.

EPSON PhotoCenter, SoundAdvice, and EPSON Store are service marks, and EPSON Software and PhotoEnhance are trademarks of Epson America, Inc.

General Notice: Other product names used herein are for identification purposes only and may be trademarks of their respective owners. EPSON disclaims any and all rights in those marks.

The ENERGY STAR emblem does not represent EPA endorsement of any product or service.

Copyright © 2003 by Epson America, Inc.

3/03

