

LINKSYS[®] by Cisco



USER GUIDE

Wireless-G Internet Home Monitoring Camera

Model: WVC54GCA



About This Guide

Icon Descriptions

While reading through the User Guide you may see various icons that call attention to specific items. Below is a description of these icons:



NOTE: This check mark indicates that there is a note of interest and is something that you should pay special attention to while using the product.



WARNING: This exclamation point indicates that there is a caution or warning and it is something that could damage your property or product.



WEB: This globe icon indicates a noteworthy website address or e-mail address.

Online Resources

Website addresses in this document are listed without **http://** in front of the address because most current web browsers do not require it. If you use an older web browser, you may have to add **http://** in front of the web address.

Resource	Website
Linksys	www.linksys.com
Linksys International	www.linksys.com/international
Glossary	www.linksys.com/glossary
Network Security	www.linksys.com/security

Copyright and Trademarks



Linksys, Cisco and the Cisco Logo are registered trademarks or trademarks of Cisco Systems, Inc. and/or its affiliates in the U.S. and certain other countries. Copyright © 2008 Cisco Systems, Inc. All rights reserved. Other brands and product names are trademarks or registered trademarks of their respective holders.

Chapter 1: Product Overview	4
Front Panel	4
Back Panel	4
Bottom Panel	4
Chapter 2: Wireless Security Checklist	5
General Network Security Guidelines	5
Additional Security Tips	5
Chapter 3: Setting Up and Mounting the Camera	6
Setup Wizard	6
Placement Options	10
Chapter 4: Installing and Using the Camera Utility	12
Overview	12
Installing the Camera Utility	12
Using the Camera Utility for the First Time	12
Using the Camera Utility	13
Chapter 5: Advanced Configuration with the Web-based Utility	20
Overview	20
How to Access the Web-based Utility	20
View Video	20
Setup > Basic	22
Setup > Image	23
Setup > Administration	24
Setup > Users	25
Setup > Options	25
Setup > Motion Detection	27
Setup > Status	28
Help	29
Appendix A: Troubleshooting	30
Appendix B: Specifications	31
Appendix C: Warranty Information	32
Limited Warranty	32
Appendix D: Regulatory Information	34
FCC Statement	34
FCC Radiation Exposure Statement	34
Safety Notices	34
Industry Canada Statement	34
Avis d'Industrie Canada	35
Wireless Disclaimer	35



Avis de non-responsabilité concernant les appareils sans fil35
User Information for Consumer Products Covered by EU Directive 2002/96/EC on Waste Electric and Electronic Equipment (WEEE)36
Appendix E: Software License Agreement	40
Software in Linksys Products40
Software Licenses40

Chapter 1: Product Overview

Thank you for choosing the Linksys Wireless-G Internet Home Monitoring Camera. The Camera sends live video through the Internet to a web browser anywhere in the world! This compact, self-contained unit lets you keep an eye on your home, your kids, your workplace—whatever's important to you.



Front Panel



-  **Power** (Blue) This LED lights up when the Camera is powered on. It flashes while the Camera is booting up and remains lit when the Camera is ready for use.
-  **Microphone** The microphone is used to record the ambient sound.


Back Panel



-  **Power** The Power port is where you will connect the power adapter.
-  **Ethernet** The Ethernet port is where you connect the Ethernet network cable.

Bottom Panel



-  **Reset** This button is used to reset the Camera. Insert a paper clip into the opening. Then press the button and hold it in for five seconds.



WARNING: Resetting the Camera will erase all of your settings, such as encryption information, and replace them with the factory defaults. Do not reset the Camera if you want to retain your settings.



NOTE: The Camera's factory default settings are.
Username: **admin**
Password: **admin**

Chapter 2: Wireless Security Checklist

Wireless networks are convenient and easy to install, so homes with high-speed Internet access are adopting them at a rapid pace. Because wireless networking operates by sending information over radio waves, it can be more vulnerable to intruders than a traditional wired network. Like signals from your cellular or cordless phones, signals from your wireless network can also be intercepted. Since you cannot physically prevent someone from connecting to your wireless network, you need to take some additional steps to keep your network secure.

1. Change the default wireless network name or SSID

Wireless devices have a default wireless network name or Service Set Identifier (SSID) set by the factory. This is the name of your wireless network, and can be up to 32 characters in length. Linksys wireless products use **linksys** as the default wireless network name. You should change the wireless network name to something unique to distinguish your wireless network from other wireless networks that may exist around you, but do not use personal information (such as your Social Security number) because this information may be available for anyone to see when browsing for wireless networks.

2. Change the default password

For wireless products such as access points, routers, and gateways, you will be asked for a password when you want to change their settings. These devices have a default password set by the factory. The Linksys default password is **admin**. Hackers know these defaults and may try to use them to access your wireless device and change your network settings. To thwart any unauthorized changes, customize the device's password so it will be hard to guess.

3. Enable MAC address filtering

Linksys routers and gateways give you the ability to enable Media Access Control (MAC) address filtering. The MAC address is a unique series of numbers and letters assigned to every networking device. With MAC address filtering enabled, wireless network access is provided solely for wireless devices with specific MAC addresses. For example, you can specify the MAC address of each computer in your home so that only those computers can access your wireless network.

4. Enable encryption

Encryption protects data transmitted over a wireless network. Wi-Fi Protected Access (WPA/WPA2) and Wired Equivalency Privacy (WEP) offer different levels of security for wireless communication.

A network encrypted with WPA/WPA2 is more secure than a network encrypted with WEP, because WPA/WPA2 uses dynamic key encryption. To protect the information as it passes over the airwaves, you should enable the highest level of encryption supported by your network equipment.

WEP is an older encryption standard and may be the only option available on some older devices that do not support WPA.

General Network Security Guidelines

Wireless network security is useless if the underlying network is not secure.

- Password protect all computers on the network and individually password protect sensitive files.
- Change passwords on a regular basis.
- Install anti-virus software and personal firewall software.
- Disable file sharing (peer-to-peer). Some applications may open file sharing without your consent and/or knowledge.

Additional Security Tips

- Keep wireless routers, access points, or gateways away from exterior walls and windows.
- Turn wireless routers, access points, or gateways off when they are not being used (at night, during vacations).
- Use strong passphrases that are at least eight characters in length. Combine letters and numbers to avoid using standard words that can be found in the dictionary.



WEB: For more information on wireless security, visit www.linksys.com/security

Chapter 3: Setting Up and Mounting the Camera

Setup Wizard

The Wireless-G Internet Home Monitoring Camera Setup Wizard will guide you through the installation and configuration procedure.

1. Insert the Setup CD-ROM into your CD-ROM drive. The Setup Wizard should run automatically, and the *Welcome* screen should appear. If not, click **Start**, then select **Run**, and then in the field provided, enter **D:\SetupWizard.exe** (if "D" is the letter of your CD-ROM drive).



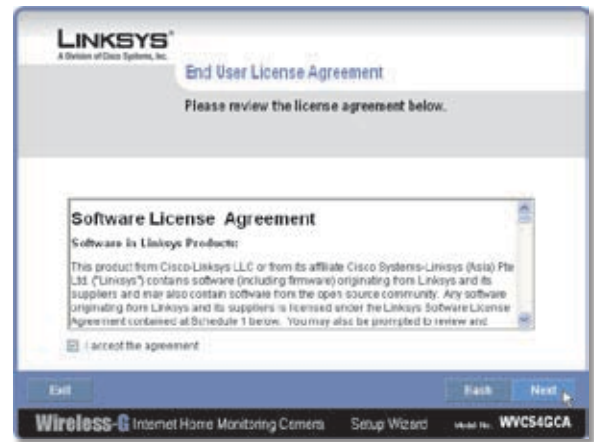
Setup Wizard - Welcome Screen

Click **Next**, then click **Click Here to Start** to continue.

2. The Setup Wizard displays the following options.
 - **Setup Camera** Click this to begin the installation process.
 - **Install Camera Utility** Click this to install the Camera Utility on your PC.
 - **User Guide** Click this to open the PDF file of this User Guide.
 - **Exit** Click this to exit the Setup Wizard.

To install the Camera, click **Setup Camera**.

3. On the *End User License Agreement* screen, check the box next to **I accept the agreement** and click **Next** if you agree and want to continue the installation, or click **Exit** to end the installation.



End User License Agreement

4. Connect the included network cable to your network router or switch. Click **Next**.



Connect Network Cable to the Switch or Router

5. Connect the other end of the network cable to the Camera's Ethernet port. Click **Next**.



Connect Network Cable to the Camera

- Plug the included power adapter into the Camera's Power port. Plug the other end into an electrical outlet. Click **Next**.



Power On the Camera

- Make sure the LED is lit on the Camera's front panel. If it is not lit, make sure the cables are properly connected to the Camera. Click **Next**.



Check the LED

- The Wizard searches for the Wireless-G Internet Home Monitoring Camera on your network, then displays the Camera found along with status information.



Camera Found on Network

If the Camera you want is not displayed, click **Search Again** to run a new search for Cameras.

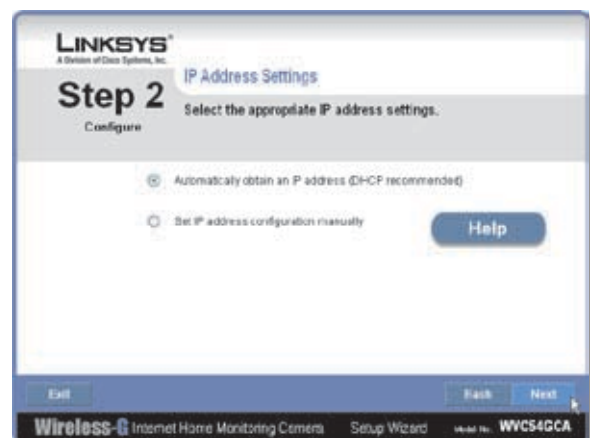
Otherwise, in the *Camera List* box, click the name of the Camera you are installing. Write down the Camera's IP address shown in the Status box, so you can use it to access the Web-based Utility later. Click **Next**.

- Enter a name for the Camera. Memorable names are helpful, especially if you are using multiple Cameras on the same network. It should have 15 characters or fewer. After you have entered the name, click **Next**.



Assign the Camera Name

- Select how to assign an IP Address to the Camera, either automatically or manually. Then click **Next**.



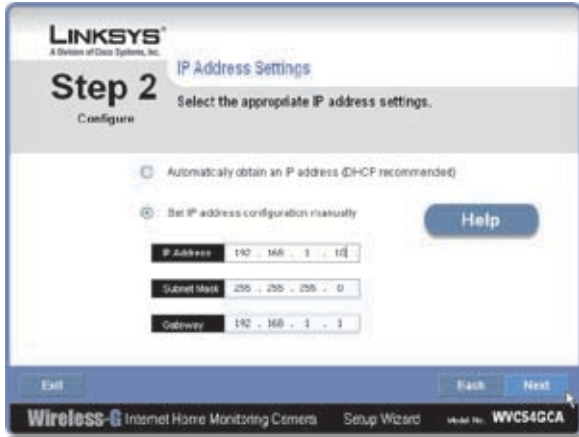
IP Address Settings

- Automatically obtain an IP Address** Select this option if you want to automatically assign an IP address to the Camera using DHCP.

If you are not sure which option to choose, Linksys recommends this option.

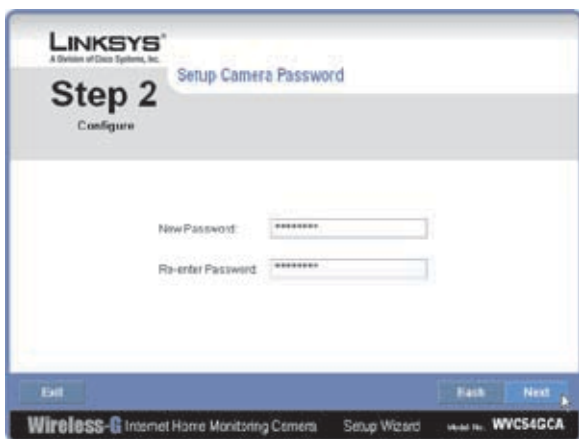
- Set IP address configuration manually** Select this option if you want to manually assign a static IP address to the Camera.

If you select this option, fill in the *IP Address*, *Subnet Mask*, and *Gateway* fields.



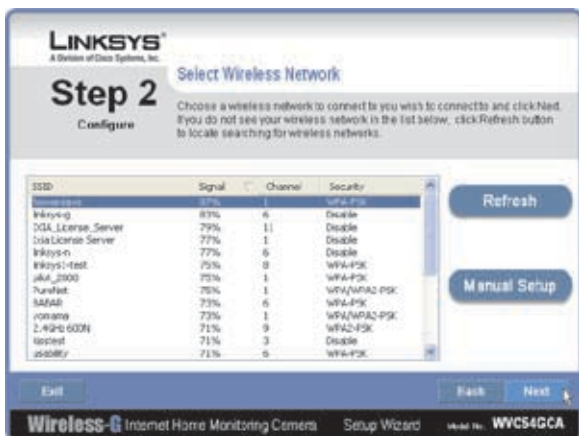
Enter the Static IP Address

11. If you want to keep the Camera's default password (**admin**), leave the fields unchanged and click **Next**. If you want to change the password, enter the new password, re-enter to confirm, then click **Next**.



Enter the Camera Password

12. The Wizard will search for wireless networks, then list the wireless networks found. If the wireless network you want to connect to is not listed, click **Refresh** to update the list. Select the wireless network that you want to connect the Camera to, then click **Next**.



Select Wireless Network

13. The Wizard displays the wireless security method that your network is using: **WPA/WPA2-Personal**, **WEP (128-Bit)**, or **WEP (64-Bit)**. Follow the appropriate instructions below. If you are not using wireless security, select **Disabled** and go to step 14.

- **WPA/WPA2-Personal** Enter a passphrase in the *Passphrase* field and click **Next**. The passphrase is case-sensitive and must be from 8 to 63 characters in length.



Security Settings - WPA/WPA2-Personal

- **WEP (64-Bit) or WEP (128-Bit)** To generate the WEP key automatically, enter a passphrase in the *Passphrase* field and click **Next**. The passphrase is case-sensitive and should not be longer than 16 characters. It must match the passphrase of your other wireless network devices and is compatible with Linksys wireless products only. (If you have any non-Linksys wireless products, enter the WEP key manually on those products.)

To manually enter a WEP key, leave the *Passphrase* field blank, click **Next**, and enter the WEP key on the next screen. This WEP key must match the WEP key of your wireless network. For 64-bit WEP encryption, enter exactly 10 hexadecimal characters. For 128-bit WEP encryption, enter exactly 26 hexadecimal characters. Valid hexadecimal characters are "0" to "9" and "A" to "F". After you have entered the WEP key, click **Next**.



Security Settings - WEP (64-Bit) or WEP (128-Bit)

- Review the Camera's settings. To make changes to the settings, click **Back** to go back to the previous screen. If the settings are correct, click **Save** to continue.



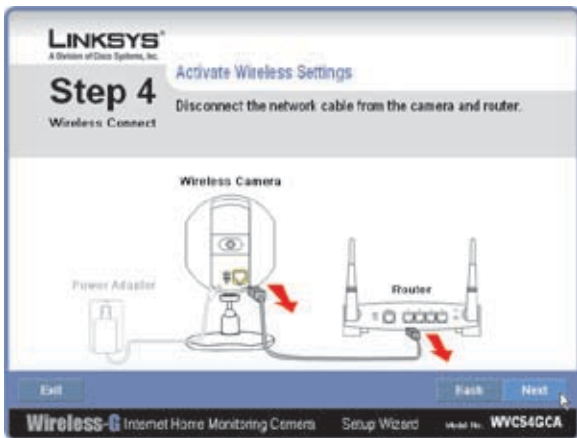
Save the Camera Settings

- When the Wizard informs you that the new Camera settings have been saved, click **Continue**.
- Disconnect the power from the camera. Click **Next**.



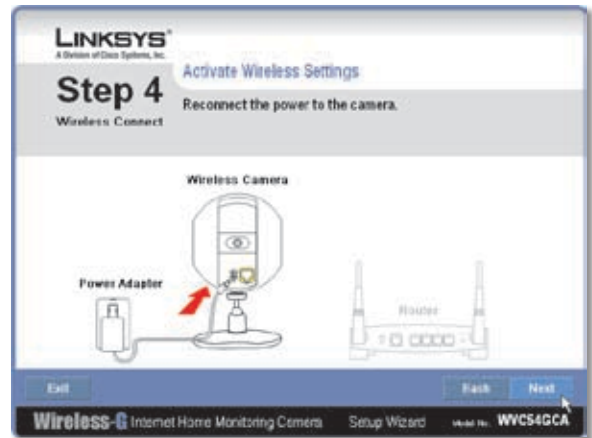
Disconnect the Power

- Disconnect the network cable from the Camera and from your switch or router. Click **Next**.



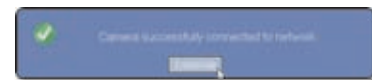
Disconnect the Network Cable

- Reconnect the power to the Camera. Click **Next**.



Reconnect the Power

- The Setup Wizard displays **Camera successfully connected to network**. Click **Continue**, then click **Next** on the following screen.



Camera Successfully Connected to Network



Camera Connected to Wireless Network



NOTE: The Camera can also be connected to a wired network. To do this, connect the network cable to the Camera before you power on the Camera. (To connect to a wireless network, power it on with no network cable attached.)

- The *Congratulations* screen appears. Click the desired option.
 - Install Camera Utility** This installs the Camera's Utility.
 - Online Registration** This registers your Camera online.
 - Exit** Click this to exit the Setup Wizard and install the Camera's utility later.

Go to Placement Options, page 10.

Placement Options

The Camera can stand on a surface or be mounted on a wall. Depending on the positioning you want, you attach the Camera head to its stand at two different points.

Stand Option

Follow these steps to stand the Camera on a surface.

1. Insert the screw end of the stand into the hole on the bottom panel.
2. Tighten the screw and then the thumbscrew.
3. Place the Camera, and adjust the tilt of its head accordingly, as described below in section “Camera Head Tilting”.



Camera in Standing Position

Wall Mount Option

You use the Camera’s stand to mount the Camera on a wall. The stand has two wall-mount slots that are spaced 58 mm (2.28 inches) apart.

1. Insert the screw end of the stand into the hole on the back panel.
2. Tighten the screw end and then the thumbscrew.
3. Determine where you want to mount the Camera. Attach two screws to the wall, so that the Camera’s wall-mount slots line up with the two screws.
4. Maneuver the Camera so the screws are inserted into the two slots.

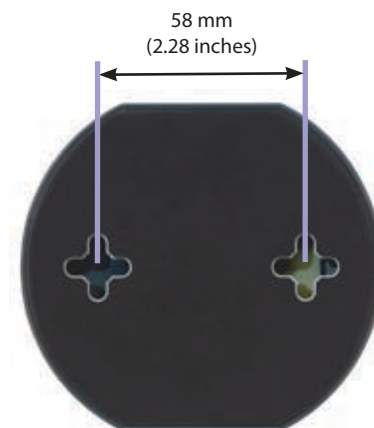
5. Adjust the tilt of its head accordingly, as described below in section “Camera Head Tilting”.



Wall Mount Option



Camera in Wall-Mounting Position (side view)



Wall-Mount Slots

Camera Head Tilting

After the Camera is assembled, you can tilt the Camera head on its ball joint using the lock nut on the camera stand. Loosen the lock nut, tilt the camera head as desired, then tighten the lock nut to secure the position.



Camera Tilting Feature with Stand Option

The installation of the Wireless-G Internet Home Monitoring Camera is complete. Go to [Chapter 4: Installing and Using the Camera Utility](#), page 12.

For information about advanced configuration using the Camera's Web-based Utility, go to [Chapter 5: Advanced Configuration with the Web-based Utility](#), page 20.

Chapter 4: Installing and Using the Camera Utility

Overview

This chapter will instruct you on how to install and use the Camera Utility on your PC. The Utility allows you to easily view and record the Camera's video.

If another Wireless-B or Wireless-G Internet Camera Utility is already installed on your PC, Linksys recommends that you uninstall it before installing this Camera Utility.



NOTE: To view video using a web browser, you must use Internet Explorer version 5.5 or higher. The View Video feature will not work with other web browsers. If you do not use Internet Explorer v5.5, use the Camera Utility instead.

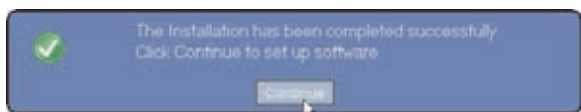
Installing the Camera Utility

1. On the *Welcome* or *Congratulations* screen of the Setup Wizard, click **Install Camera Utility**.



Install Camera Utility Screen

2. The Setup Wizard begins to install the Camera Utility. The progress of the installation is displayed.
3. When the Setup Wizard informs you that the installation is complete, click **Continue**. The Utility will automatically start up and display the *Setup* screen.



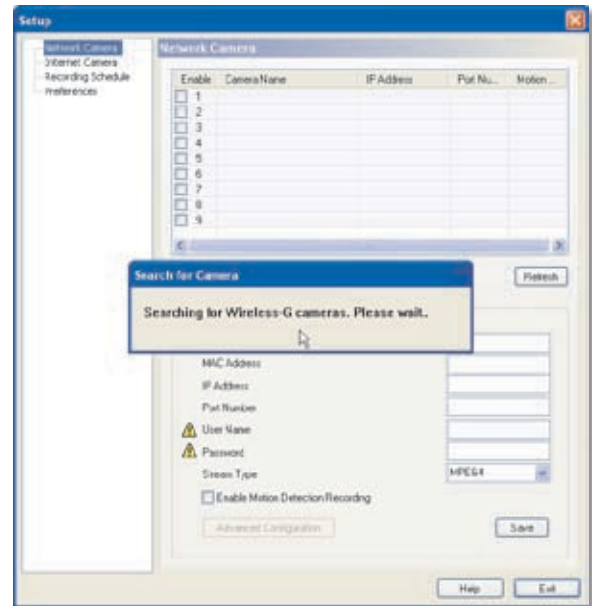
Camera Utility Installation Completed

Go to [Using the Camera Utility for the First Time](#), page 12.

Using the Camera Utility for the First Time

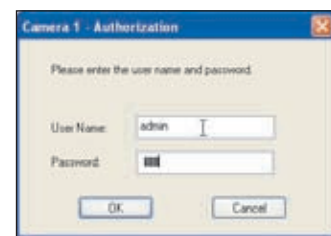
The Camera Utility starts up automatically after the Utility is successfully installed. This section describes the steps to follow to set up the Camera.

1. The Camera Utility displays the *Setup* screen and searches for your Wireless-G Camera.



Setup Screen - Searching for Camera

2. When the *Authorization* screen appears, enter your User Name and Password:
 - **User Name** Enter **admin** in this field.
 - **Password** If you did NOT change the password in Step 11 of section "Setup Wizard" in "Chapter 2: Setting Up and Mounting the Camera," enter **admin** in this field. Otherwise, enter the new password.



Authorization Screen

3. Click **Save**, then **Yes** to save the Camera's settings.

To learn how to use the Camera Utility, go to [Using the Camera Utility](#), page 13.

Advanced users: If you want to use the Camera's Web-based Utility, go to [Chapter 5: Advanced Configuration with the Web-based Utility](#), page 20.

Using the Camera Utility

After the Camera Utility is installed, its icon is displayed on the Desktop and in the System Tray of the Taskbar. To open the Camera Utility, use either icon as follows:

- Double-click the icon on your desktop
- Right-click the icon in the system tray, then click **Wireless-G Internet Home Monitoring Camera**.



Desktop Icon



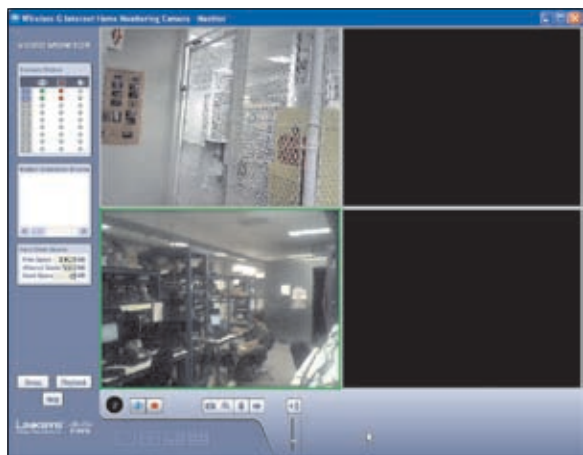
System Tray Icon

When you are finished using the Camera Utility, exit the Utility as follows:

- Close each open Utility window by clicking **Exit** or by clicking the **X** button in the upper-right corner.
- Right-click the Utility's system tray icon and select **Exit**.

Monitor Window

After you open the Utility, the *Monitor* window is displayed. The *Monitor* window contains the following sections: *Camera Status*, *Motion Detection Events*, *Hard Disk Quota*, the viewing area containing video displays for Channels 1-9, video layout controls, and video control buttons.

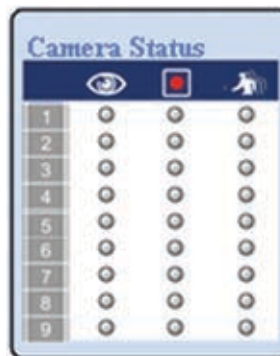


Monitor Window

To display the *Setup* window, click **Setup**. To display the *Playback* window, click **Playback**. To get help information, click **Help**.

Camera Status

This section of the *Monitor* window provides the following status information for all the Cameras the Utility has detected: Camera is being viewed, Camera is being recorded, motion detection is enabled on the Camera:



Camera Status

A blue channel number (1-9) means a Camera has been detected on that channel. Each Camera's status is given by colored indicators as described in the following table.

Icon	Status Indications
	Viewing Status: Clear - Camera's video is not being viewed. Green - Camera's video is being viewed.
	Recording Status: Clear - Camera's video is not being recorded. Red - Camera's video is being recorded.
	Motion Detection Status: Clear - Camera's motion detection is disabled. Yellow - Camera's motion detection is enabled.

Motion Detection Events

If motion detection is enabled, this section of the *Monitor* window lists the most recent motion detection events.



Motion Detection Events

Hard Disk Quota

This section of the *Monitor* window lists information related to the amount of hard disk that is allocated for recorded video.



Hard Disk Quota

Viewing Area

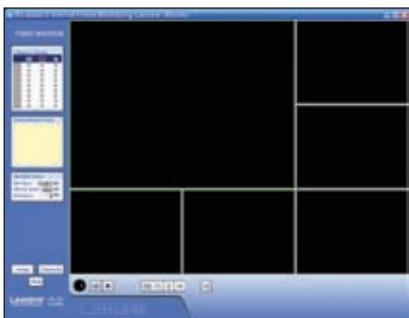
The Viewing Area takes up most of the *Monitor* window. The Viewing Area can have four different layouts, with video windows for one, four, six, or nine Cameras. The layout is selected using the video layout controls described in "Video Layout Controls".



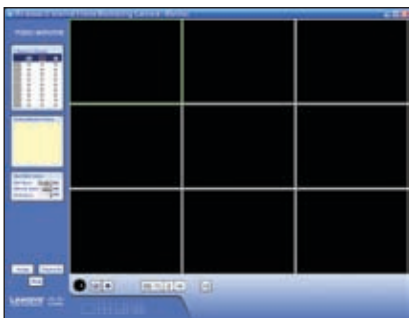
Viewing Area - Single-Camera Display



Viewing Area - Four-Camera Display



Viewing Area - Six-Camera Display



Viewing Area - Nine-Camera Display

Multiple-Camera Layouts

In a multiple-Camera layout, one of the video windows is always outlined in green. This indicates the currently selected Camera. The Video Control buttons can be used to perform various functions on the video from this Camera. For information on the video control buttons, refer to **Video Control Buttons, page 15**.



Channel Number of Selected Camera

The channel number of the selected Camera is indicated below the lower left corner of the Viewing Area. To specify a different Camera as the selected Camera, click on that Camera's video window.

Each Camera can be displayed using any of the video windows in the layout. To move a Camera from one video window to another, click and drag the Camera's video window to another video window. The two Cameras originally assigned to each of the two windows will then swap places. This is especially useful for the six-Camera layout, which has one large video window and five smaller ones. A Camera assigned to one of the smaller windows can be quickly enlarged by dragging it to the large window.





To quickly view any Camera's video at full scale, double-click that Camera's video window. The layout will change to a single-camera display of the selected Camera's video.

Video Layout Controls

This section of the *Monitor* window lets you change the layout of the viewing area. To select a particular layout, click the layout's icon.











Video Layout Icons

Icon	Function
	Click this icon to display video from one Camera only.
	Click this icon to display video from up to four Cameras. The video windows are all of equal size.
	Click this icon to display video from up to six Cameras, with one large video window and five small video windows.
	Click this icon to display video from up to nine Cameras. The video windows are all of equal size.

Video Control Buttons

The video control buttons are located along the lower left edge of the viewing area. These buttons act upon the selected Camera as explained below.

Button	Function
	View Click this button to view the current video.
	Record Click this button to record* the current video.
	Snapshot Click this button to take a snapshot of the current video image.
	Zoom Click this button to zoom into current video display. The zoom factor cycles through 1x, 2x, and 4x.
	Flip Click this button to flip the current video display top-to-bottom.
	Mirror Click this button to reverse the current video display left-to-right.
	Sound Click this button to toggle the sound on or off.
	Volume Slide this bar upward to increase the volume. Slide the bar downward to decrease the volume.

* During recording, the Utility's System Tray icon turns into an animated icon (arrow moves up and down). When recording ends, the icon reverts to its original state.



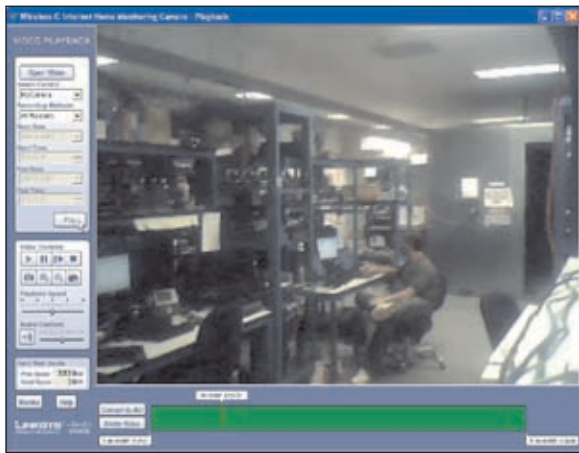
Recording In Progress



No Recording In Progress

Playback Window

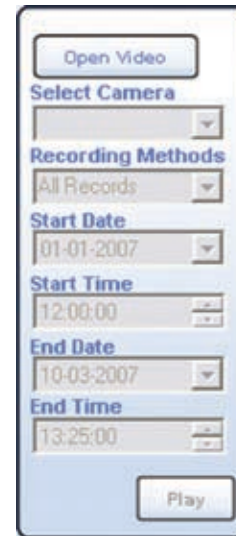
The *Playback* window is used to play back videos that you have recorded and saved.



Playback Screen

Video Selection

This section of the *Playback* window lets you select the video(s) for playback.



Playback Selection

Open Video Click this button if you want to select the folder containing the videos on your computer. Otherwise, use the remaining fields to select the video from the default recording folder (indicated by the *Recording Path* field of the *Setup > Preferences* screen).

Select Camera Select the Camera that recorded the video.

Recording Methods Specify the criteria to be used to select the video for the selected Camera:

- **All Records** Displays all recorded videos for the selected Camera.
- **Select Period** Limits the video selections to the range defined by Start Date/Time and End Date/Time.
- **Motion Detection** Limits the selections to videos that were recorded as a result of motion detection.

If the *Recording Methods* field is set to **Select Period**, define the date and time period by filling in the following fields.

- **Start Date** Specify the starting date in mm-dd-yyyy format.
- **Start Time** Specify the starting time in hh:mm:ss format.
- **End Date** Specify the ending date in mm-dd-yyyy format.
- **End Time** Specify the ending time in hh:mm:ss format.

Play Click this button to begin playing the selected videos.

Basic Video Controls

This section of the *Playback* window lets you perform basic functions on the video(s) you have selected for playback. The controls and their functions are described below.



Basic Video Controls

Control	Function
	Play Click this button to play the video.
	Pause Click this button to pause the video.
	Frame by Frame Click this button to play exactly one video frame. Each successive click advances playback exactly one frame.
	Stop Click this button to stop video playback.
	Snapshot Click this button to capture a still image of the current video display.
	Zoom In Click this button to zoom in on the video display.
	Zoom Out Click this button to zoom out of the video display.
	Print Click this button to print the current video image.
	Playback Speed Slide this bar to adjust the playback speed. Slide it to the left for slower playback or to the right for faster playback.
	Sound Click this button to turn the sound on or off.
	Volume Slide this bar to adjust the sound volume. Slide it to the left to lower the volume or to the right to raise the volume.

Hard Disk Quota

This section of the *Playback* window indicates how much hard disk is allocated for recorded video.



Hard Disk Quota

Advanced Video Controls

Advanced video functions are performed using the advanced video controls. These controls are located below the viewing area and consist of two buttons and three markers. Each marker displays the date and time of a specific point in the video. If you reposition a marker, the displayed date and time will change accordingly.



Video Controls

Convert to AVI To convert the currently playing video to AVI format, click this button, select a destination folder for the AVI file, and then click **OK**.

Delete Video Click this button to delete the video from your computer.

<mm/dd/yyyy hh:mm:ss> This marker displays the date and time of the current point in the video. As playback proceeds, this marker moves to the right. To immediately move to another point in the video, slide this marker to the desired point.

S <mm/dd/yyyy hh:mm:ss> This marker is used to select the starting point for playback. By default this marker is always set to the start of the video. If you want to start playback at a later point in the video, move this marker to the right.

E <mm/dd/yyyy hh:mm:ss> This marker is used to select the ending point for playback. By default this marker is always set to the end of the video. If you want to stop playback at an earlier point in the video, move this marker to the left.

Other Buttons

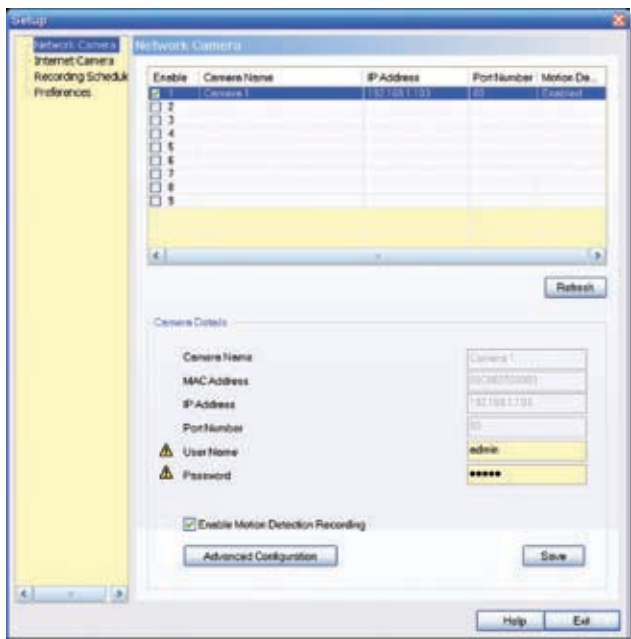
Click **Monitor** to open the *Monitor* window. Click **Help** to display help information.

Setup Screen

The *Setup* screen is accessed by clicking the **Setup** button on the *Monitor* window of the Camera Utility. There are four tabs along the left side of the *Setup* screen: **Network Camera**, **Internet Camera**, **Recording Schedule**, and **Preferences**. By default, the Network Camera tab is selected when the *Setup* screen is opened. These tabs display screens whose functions are described below.

Setup > Network Camera

Click the **Network Camera** tab to set up a network Camera.



Setup > Network Camera

The upper section of the *Setup > Network Camera* screen contains a list of all Wireless-G Cameras that have been detected (up to 9). The *Camera Details* section of the screen provides information about the selected Camera.

Camera List

Enable Check this box to enable the Camera. Uncheck the box to disable the Camera.

Camera Name Displays the name of the Camera.

IP Address Displays the Camera's IP address.

Port Number Displays the Camera's port number.

Motion Detection Recording Indicates if motion detection recording is enabled or disabled.

Camera Details

Camera Name Displays the name of the Camera that you specified while running the Setup Wizard.

MAC Address Displays the Camera's MAC address.

IP Address Displays the Camera's IP address.

Port Number Displays the Camera's port number.

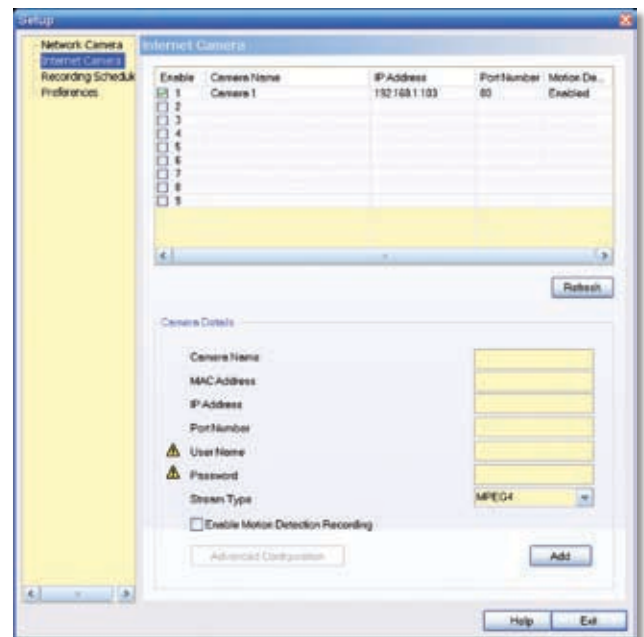
User Name and Password Displays the user name. The password is displayed as "*****" for security reasons.

Enable Motion Detection To enable motion detection recording, check this checkbox. The default is disabled.

Click **Advanced Configuration** to open the Web-based Utility. Click **Save** to save your changes, or click **Exit** to exit without saving changes. Click **Help** to display help information.

Setup > Internet Camera

To set up a Camera located on the Internet, click the **Internet Camera** tab, then fill in the fields and click **Add**.



Setup > Internet Camera

Camera Name Enter the name assigned to the Camera.

MAC Address Enter the Camera's MAC address.

IP Address Enter the Camera's IP address.

Port Number Enter the Camera's port number.

User Name and Password Enter the Camera's user name and password.

Stream Type Select either **MJPEG** or **MPEG4** (default).

Enable Motion Detection Recording Check the box to enable motion detection recording. The default is disabled.

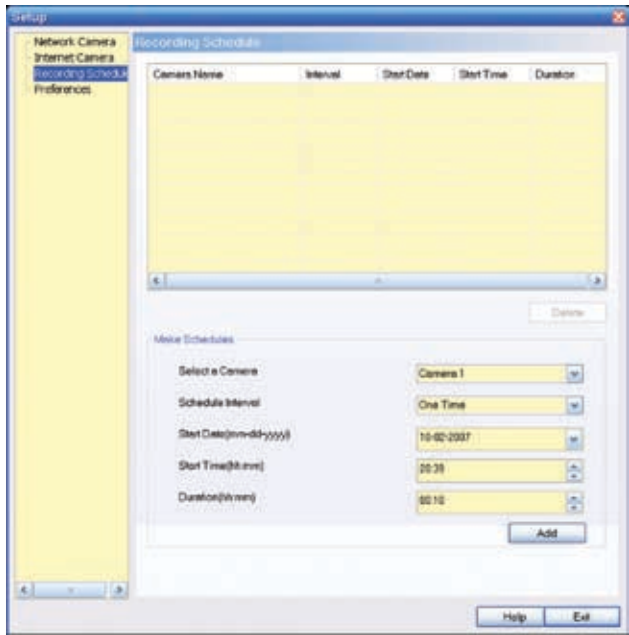
Add After you have entered all of the information for the Camera, click this button to add the Camera to the list.

Advanced Configuration Click this button to open the Web-based Utility in your web browser.

Click **Advanced Configuration** to open the Web-based Utility. Click **Exit** to exit without saving your changes. Click **Help** to display help information.

Setup > Recording Schedule

To set up a recording schedule for a Camera, then click the **Recording Schedule** tab.



Setup > Recording Schedule

To schedule a recording for a Camera, follow these steps.

- Fill in the following fields.
 - Select a Camera** Select the Camera that will be recorded from the drop-down menu.
 - Schedule Interval** Select the days on which you want the Camera to record. The choices are One Time, Every Day, Mon-Fri, Sat-Sun, Sun, Mon, Tue, Wed, Thu, Fri, and Sat. (All settings except One Time cause recording to occur on a recurring basis.)
 - Start Date (mm-dd-yyyy)** Enter the date to start the recording, in mm-dd-yyyy format.
 - Start Time (hh:mm)** Enter the time to start the recording, in hh:mm format.
 - Duration (hh:mm)** Enter the duration of the recording in hh:mm format.
- Click **Add** to save the new scheduled recording information.
- The scheduled recording will appear in the list of scheduled recordings at the top of the screen.

To delete a scheduled recording, select the recording from the list, and click **Delete**.

Click **Help** to display help information. Click **Exit** to exit without saving your changes.

Memory Requirements for Video Recordings

You may find it helpful to know how much memory is required to hold a video recording. For information on estimated bit rates for a typical video recording at each available resolution and video, refer to **Setup > Image, page 23**.



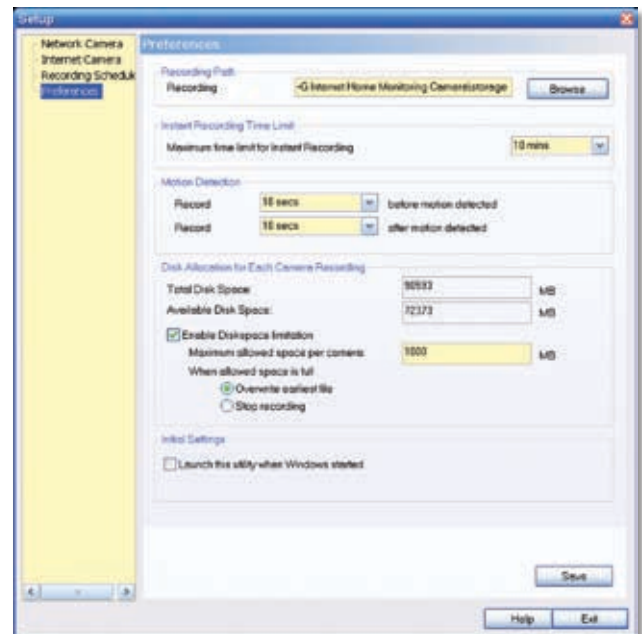
NOTE: In order for the scheduled recordings to occur, the Camera Utility must be running on a networked PC.



NOTE: The maximum length of a recording file is one hour. If a recording is more than one hour long, then multiple files will be saved.

Setup > Preferences

To configure the Camera's preference settings, click the **Preferences** tab.



Setup > Preferences

The *Setup > Preferences* screen allows you to configure the following settings.

Recording Path

Recording This is the drive and folder where recorded video files will be saved on your computer. The default is **C:\Program Files\Wireless-G Internet Home Monitoring Camera\storage**.

Instant Recording Time Limit

Maximum Time Limit for Instant Recording This is the maximum length of a recording that is started by clicking the Record button on the *Monitor* window. The default is **10 min.**

Motion Detection

The following two settings apply only if the Motion Detection Recording feature is enabled.

- **Record before motion detected** This is the length of time **prior** to the detection of motion that will be saved with the recording. Having this additional footage can help to show the motion more clearly when it occurs.
- **Record after motion detected** This is the length of time that the Camera will continue to record after motion is detected.

Disk Allocation for Each Camera Recording

Total Disk Space This is the total amount of storage space on your PC's hard drive.

Available Disk Space This is the total amount of remaining storage space on your PC's hard drive.

Enable Diskspace Limitation If you want to limit the amount of disk space used by each Camera, check this box, then fill in the fields below.

- **Maximum allowed space per camera** Enter the maximum allowed space per camera in MB. The default is **1000 MB.**
- **When allowed space is full** Select the action to take when the space limit is reached, either **Overwrite earliest file** (default), or **Stop recording.**

Initial Settings

Launch this Utility when Windows started Check this box if you want to have this utility started automatically whenever Windows is started.

Click **Save** to save any settings you have changed on the screen, or click **Exit** to exit without saving your changes. Click **Help** to display help information.

If you want to use the Camera's Web-based Utility, go to "Chapter 4: Advanced Configuration with the Web-Based Utility."

Chapter 5: Advanced Configuration with the Web-based Utility

Overview

Use the Camera's Web-based Utility to access and alter its settings. This chapter will describe each web page in the Utility and its features. The Utility can be accessed via the web browser of a computer connected to the Camera.

How to Access the Web-based Utility

You can access the Utility using either of these methods.

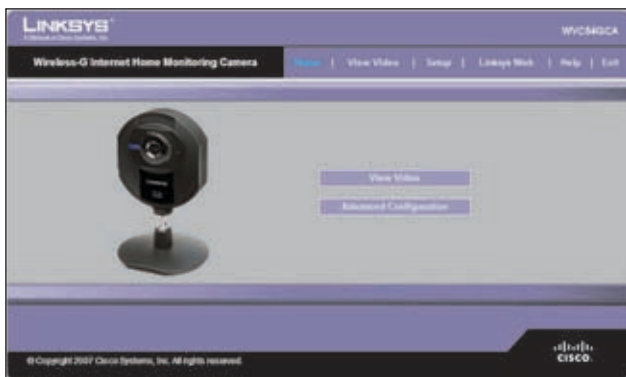
- Launch Internet Explorer, and enter the Camera's IP address in the *Address* field. Then press **Enter**.



Enter the Camera's IP Address

- From the *Monitor* window of the Camera Utility, select the Camera, then click the **Setup** button. (For instructions on how to launch the Camera Utility, refer to [Using the Camera Utility, page 13](#).)

The *Welcome* screen of the Web-based Utility will appear.



Web-Based Utility *Welcome* Screen

There are six tabs across the top of the *Welcome* screen: **Home**, **View Video**, **Setup**, **Linksys Web**, **Help**, and **Exit**.

- **Home** – Select this tab to return to the *Welcome* screen.
- **View Video** – Select this tab to view the Camera's video. Go to [View Video, page 20](#) for more information.
- **Setup** – Select this tab to alter the Camera's settings. Go to the appropriate section (**Setup > Basic, page 22**, **Setup > Image, page 23**, **Setup > Administration, page 24**, **Setup > Users, page 25**, **Setup > Options, page 25**, **Setup > Motion Detection, page 27**, or **Setup > Status, page 28**) for more information.

- **Linksys Web** – Select this tab to go to the Linksys website, www.linksys.com.
- **Help** – Select this tab to display the *Help* screen. Go to the "Help" section for more information.
- **Exit** – Select this tab to close the Utility.

View Video

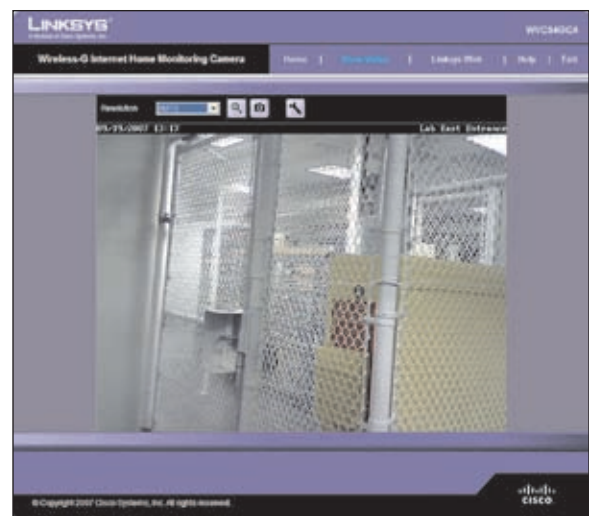
Follow these instructions to view the Camera's video.

1. Click the **View Video** tab on the *Welcome* screen.



NOTE: To view video using a web browser, you must use Internet Explorer version 5.5 or higher. The View Video feature will not work with Netscape. Netscape users should use the Camera Utility instead.

2. The *View Video* screen appears, showing the live video from the Camera.



View Video Screen (640x480 Resolution)

The top of the *View Video* screen contains a number of controls that are used to adjust the video display. These controls and their functions are described in the sections below.

There are four selectable tabs across the top of the *View Video* screen: **Home**, **Linksys Web**, **Help**, and **Exit**.

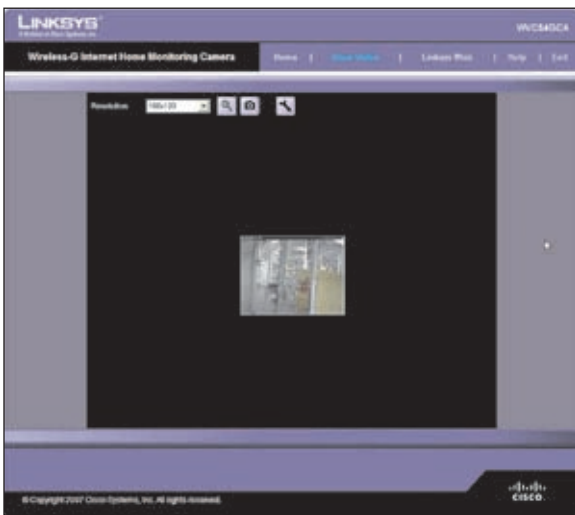
- **Home** – Select this tab to return to the *Welcome* screen, or to edit the Camera's settings with the Web-based Utility (select **Setup** or **Advanced Configuration** on the *Welcome* screen).
- **Linksys Web** – Select this tab to go to the Linksys website, www.linksys.com.
- **Help** – Select this tab to display the *Help* screen. Go to the "Help" section for more information.
- **Exit** – Select this tab to close the Utility.

Resolution

Use the *Resolution* drop-down menu to select the display resolution. Possible values are **Auto** (default), **640x480**, **320x240**, or **160x120**. The display changes to the new resolution immediately after it is selected.



View Video Screen (320x240 Resolution)



View Video Screen (160x120 Resolution)

Zoom Factor

You use the Zoom button to zoom in and out of the displayed video.



Zoom Button

When you click the button, the cursor changes to a magnifying glass labeled with the current zoom factor (cycles through 1x, 2x, and 4x). Position the cursor over the part of the image you want to magnify and click once.

Snapshot

You use the Snapshot button to capture a still image of the video display.



Snapshot Button

When you click this button, the Snap Shot window appears. Click **Save** to save the image, or click **Cancel** to exit without saving the image.



Snap Shot Window

Audio

Use the Audio button to toggle the sound on or off from the Camera's built-in microphone. The button's appearance indicates whether the sound is on or off. When the sound is on, you can adjust the volume by sliding the volume control to the left to lower the volume, or to the right to increase the volume.



Audio Button:
Sound ON



Audio Button:
Sound OFF



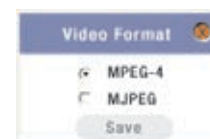
Volume Adjustment

Video Format

To select the video format, click the Video Format button, and the Video Format window appears. Select either **MPEG-4** or **MJPEG**, then click **Save**. To exit without saving, click the X in the upper-right corner of the window.



Video Format Button



Video Format Window

Setup > Basic

The *Setup > Basic* screen appears when you click the **Setup** tab or **Advanced Configuration** on the *Welcome* screen. The *Setup > Basic* screen allows you to alter the Camera's Device settings, Network settings, Wireless settings, and Security settings.



Setup > Basic Screen

Edit the settings on this screen as needed. Then, to save your changes, click **Apply**. To cancel any unsaved changes, click **Cancel**. To get additional information about the screen's features, click **Help**.

Device Settings

- **Camera Name** You may assign the Camera any name up to 15 characters long. Unique, memorable names are helpful, especially if you use multiple Cameras on the same wireless network.
- **Description** Enter information about the Camera in this field. You can enter up to 32 characters.
- **LED Operation** This feature allows you to enable or disable the Camera's LED.
- **Current Date/Time** This displays the Camera's current date and time. If it is incorrect, click **Sync with PC** to use your computer's date and time.
- **Time Zone** Select the time zone for the Camera's location.
- **Adjust for Daylight Saving Time** Select this to adjust the Camera's current time for Daylight Saving Time.



NOTE: You must unselect this option when Daylight Saving Time finishes.

Network Settings

- **Configuration Type** If you want to automatically assign the Camera an IP address from a DHCP server, then select **Obtain Address Automatically (DHCP)** (default). If you want to assign the Camera a static IP address, then select **Fixed IP Address**, and complete the *IP Address*, *Subnet Mask*, *Gateway*, *Primary DNS* and *Secondary DNS* fields.
- **IP Address, Subnet Mask, Gateway, Primary DNS, Secondary DNS** Complete these fields if you want to assign the Camera a static IP address. You need to enter at least one DNS address.

Wireless Settings

- **SSID** Enter the network's SSID or network name here.
- **Network Type** Select the network's mode, **Ad-hoc** or **Infrastructure**.
- **Channel No** If the Camera is set to Ad-hoc mode, select its channel setting from the drop-down menu.
- **Security** Click **Edit Security Settings** to display the *Wireless Security* screen.

Setup > Basic > Wireless Security

The *Wireless Security* screen is used to configure the Camera's wireless security settings to match your wireless network settings. The settings are as follows.

Security Mode Select the wireless security mode used by your wireless network:

- **Disable** (no wireless security)
- **WEP**
- **WPA/WPA2 Personal**.

The method selected determines which other fields are displayed on the screen. The different security modes and the fields that accompany them are described in detail below.

- **Disable**

This option implements no security on your wireless network. Data is not encrypted before transmission.



Wireless Security - Disable Security Mode

- **WEP**

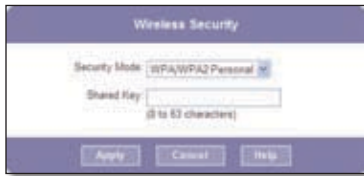
WEP is a basic encryption method, which is not as secure as later methods such as WPA-Personal or WPA2 Personal. However, it is supported by all clients.



Wireless Security - WEP Security Mode

- **TX Key** Select the number of the key used on the wireless network.
- **WEP Encryption** Select the appropriate option for key length based on your network settings.
- **Passphrase** Type in the passphrase used to generate WEP keys on your network and click **Generate**.
- **Key 1 - Key 4** Key values can be entered manually or generated from a passphrase.
- **Authentication** Select the appropriate authentication type used on the wireless network.
- **WPA/WPA2 Personal**

This method offers TKIP encryption with dynamic encryption keys.



Wireless Security - WPA/WPA2 Personal Security Mode

- **Shared Key** Enter the shared key of 8 to 63 characters that will be used to access the wireless network.

When you are finished editing the Camera's wireless security settings, click **Apply** to save your changes and return to the *Setup > Basic* screen. Click **Cancel** at any time to cancel any unsaved changes and return to the *Setup > Basic* screen. To get additional information about the screen's features, click **Help**.

Setup > Image

The *Setup > Image* screen allows you to alter the Camera's video settings.



Setup > Image Screen

MPEG4 Settings

Resolution Set the resolution for viewing and recording the Camera's video: **640x480** (high resolution) **320x240** (medium resolution), or **160x120** (low resolution).

Video Quality Control Select either **Constant Bit Rate** or **Fixed Quality** for the video stream.

- **Constant Bit Rate** Select the bit rate you want for viewing or recording the Camera's video. The range varies from **64 Kbps** to **1.2 Mbps**.
- **Fixed Quality** Select the level of quality you want for viewing or recording the Camera's video. The range varies from **Very Low** to **Very High**.

Max Frame Rate Select the maximum frame rate for the camera. Reducing this lowers the amount of bandwidth required by the camera. The range is from 1 to 30.

MJPEG Settings

Resolution Set the resolution for viewing and recording the Camera's video: **640x480** (high resolution) **320x240** (medium resolution), or **160x120** (low resolution).

Fixed Quality Select the level of quality you want for viewing or recording the Camera's video. The range varies from **Very Low** to **Very High**.

Max Frame Rate Select the maximum frame rate for the camera. Reducing this lowers the amount of bandwidth required by the camera. The range is from 1 to 30.



NOTE: Video quality and/or performance may be affected by the number of users connected to the Camera.

It may be helpful to know the bit rates for video viewing or recording at different resolutions and image quality levels. The following table lists these estimated bit rates.

Estimated Bit Rates for Video Viewing or Recording

Resolution	Quality Level	Bit Rate in kbps
640 x 480	Very High	4000
640 x 480	High	3200
640 x 480	Normal	1200
640 x 480	Low	480
640 x 480	Very Low	160
320 x 240	Very High	1000
320 x 240	High	800
320 x 240	Normal	300
320 x 240	Low	120
320 x 240	Very Low	40
160 x 128	Very High	800
160 x 128	High	400
160 x 128	Normal	200
160 x 128	Low	100
160 x 128	Very Low	40

Mobile Settings

Enable Mobile Streaming Select this option to enable video streaming to a mobile device.

Video Adjustments

Power Line Frequency Select the power line frequency (**50Hz** or **60Hz**) used in your region, to improve the picture quality under fluorescent lighting.

White Balance Select the desired option to match the current environment and lighting.

Brightness If necessary, you can adjust the brightness to obtain a better image. For example, if the camera is facing a bright light, the image may be too dark. In this case, you can increase the brightness. You can select a Brightness value between **-3** and **3**.

Sharpness Select the desired option for the sharpness. You can select a Sharpness value between **-3** and **3**.

Options

Enable Microphone Select this to enable audio. Using Audio increases the bandwidth requirements slightly.

Enable Time Stamp Select this to display a time stamp on the video.

Enable Text Display To display text on the video, select this, then enter up to 20 characters in the field.

To save your changes, click **Apply**. To cancel any unsaved changes, click **Cancel**. To get additional information about the screen's features, click **Help**.

Setup > Administration

The *Setup > Administration* screen allows you to change the Camera's login name and password, reset the factory defaults, upgrade the firmware, and set the language.



Setup > Administration Screen

Login

These fields are used to change the login name and password used to access the Camera. For security purposes, you should change these from the default values (both set to **admin**).

Login Name Enter the login name for the Camera.

Password Enter the password for the Camera.

Verify Password Re-enter the password to verify.

Restore Factory Defaults

Restore Defaults To restore the Camera to its factory default settings, click **Restore Defaults**.



NOTE: This will overwrite the Camera's settings with the factory defaults. Any changes you made to the Camera's settings will be lost; you will not be able to recover them.

Firmware Upgrade

Upgrade Firmware New firmware versions are posted at www.linksys.com and can be downloaded for free. If the Camera is functioning satisfactorily, there is no need to download a newer firmware version, unless that version has a new feature that you want to use. Loading new firmware onto the Camera does not always enhance its performance.

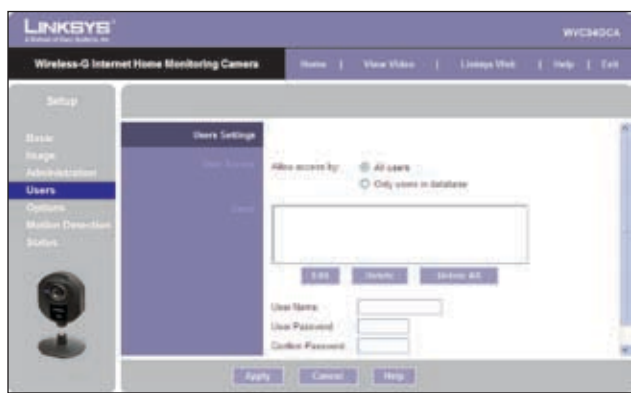
Linksys recommends that you upgrade the Camera's firmware within your network; in other words, use a computer within the Camera's local network. If you attempt to upgrade the Camera's firmware from a remote location—using a computer outside of the Camera's local network—the upgrade will fail.

To upgrade the firmware:

1. Go to www.linksys.com, and download the firmware upgrade file for the Camera. Then extract the file.
2. From the *Setup > Administration* screen, click **Upgrade Firmware**.
3. You will see the *Upgrade Firmware* screen. Click **Browse** to find the extracted file, and then double-click it.
4. Click **Start Upgrade**, and follow the on-screen instructions. To cancel the upgrade, click **Cancel**.

Setup > Users

The *Setup > Users* screen lets you specify which Camera users are allowed to view the Camera's video.



Setup > Users Screen

Users Settings

Use this to assign access rights to the Camera's users.

Allow access by Select how access is to be granted, either **All users** or **Only users in database**. If you select **Only users in database**, edit the user database as needed, as described below.

Users This lists the user database (the users who have access to the Camera).

Editing the Database

To add a user to the database:

1. Enter the user's name in the *User Name* field.
2. Enter the password in the *Password* and *Confirm Password* fields.
3. Click **Add User** to save the user in the database.

To edit a user's record in the database:

1. Select the user from the *Users* list, then click **Edit**.
2. Edit the User Name and/or Password as needed.
3. Click **Add User** to save the updated information.

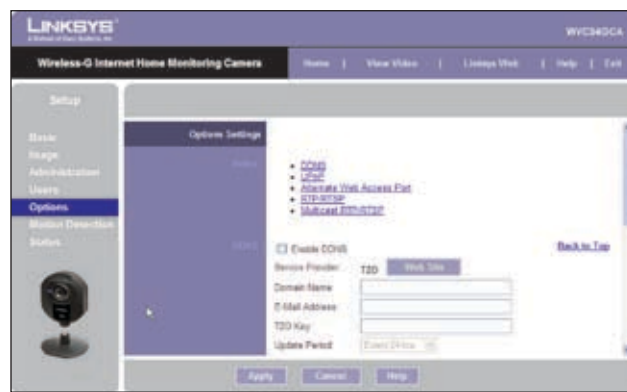
Other operations:

- **Clear** While editing a user's information, click **Clear** to clear the *User Name*, *Password*, and *Confirm Password* fields and start over.
- **Delete** To delete a user's record from the database, select the user from the list, then click **Delete**.
- **Delete All** To clear the database, click **Delete All**, then click **OK** to confirm.

To save your changes, click **Apply**. To cancel any unsaved changes, click **Cancel**. To get additional information about the screen's features, click **Help**.

Setup > Options

The *Setup > Options* screen allows you to set up and configure DDNS Service, UPnP configuration, and Alternate Port settings. DDNS (Dynamic Domain Name System) lets you assign a fixed host and domain name to a dynamic Internet IP address.



Setup > Options Screen

DDNS

Enable DDNS Select this option to enable DDNS service with the Camera.

Service Provider This is the DDNS service provider, which is preset to TZO.

Domain Name Enter the domain name assigned to you by your DDNS service provider.

E-Mail Address Enter the E-mail address used to register the DDNS service.

TZO Key Enter the TZO key provided by your DDNS service provider.

Update Period Use this to set the schedule for checking whether the Internet IP address has been changed. Specify how often to check, from **Every 10 mins** to **Every 24 hrs**, as well as the time to start checking, in hh:mm format.



NOTE: Before you can use the Camera's DDNS feature, you must configure the port forwarding feature on your network router. Go to <http://kb.linksys.com/16337> for instructions on how to configure port forwarding on a Linksys router. For other routers, refer to your router's documentation.



NOTE: Once you have set up the DDNS feature, a maximum of **four** users (i.e., users at four different PCs) can simultaneously view the Camera's video..

To save your changes, click **Apply**. To cancel any unsaved changes, click **Cancel**. To get additional information about the screen's features, click **Help**.

UPnP

Enable/Disable When enabled, the Camera's Universal Plug and Play (UPnP) feature allows a UPnP-enabled computer to easily detect the Camera. The Camera's UPnP feature is disabled by default. If your computer is UPnP-enabled, select this option.

Alternate Access Web Port

Enable/Disable If you want the Camera to be able to use an alternate port for communications, select this option. Then, enter the desired port number in the range from **1024** to **65534** in the *Port Number* field. The default port number is **1024**.

If you already have a Web Server on your LAN, then you should enable the Alternate Port and use this port number instead of port 80.

RTP/RTSP

You can view a Camera's live video stream using various multimedia player applications such as QuickTime, RealPlayer, or Windows Media Player, or using a mobile phone that supports RTSP. To do this, first configure the RTP/RTSP settings in this section as needed, then open the multimedia player, then point the player to the appropriate URL listed below (where *<Camera IP Address>* is the IP address of the Camera you want to view).

- QuickTime or RealPlayer:
rtsp://< Camera IP Address>/img/video.sav
- Windows Media Player:
http://<Camera IP Address>/img/video.asf
- Mobile phone with RTSP support:
http://<Camera IP Address>/img/video.asf

RTSP Port To change the RTSP Port number, enter the desired number in the range of **1024** to **65535**. The default is **554**.

RTP Data Port To change the RTP Data Port, enter the desired number in the range of **1024** to **65535**.

Max RTP Data Packet To change the maximum length of RTP data packets, enter the desired maximum length in the range of **400** to **1400**.

Multicast RTP/RTSP

Enable/Disable Select **Enable** to enable the Multicast RTP/RTSP feature, or **Disable** to disable the feature.

Video Address To change the Video Address, enter the new address in the field provided. The default Video Address, **224.2.0.1**, can be used for multicasting and does not normally need to be reconfigured. If this address needs to be changed, contact your network administrator.

Video Port To change the Video Port, enter the new port number (even values only, from 1024 to 65534) in the field provided. The default Video Port, **2240**, can be used for multicasting and does not normally need to be reconfigured. If this port number needs to be changed, contact your network administrator.

Audio Address To change the Audio Address, enter the new address in the field provided. The default Audio Address **224.2.0.1**, can be used for multicasting and does not normally need to be reconfigured. If this address needs to be changed, contact your network administrator.

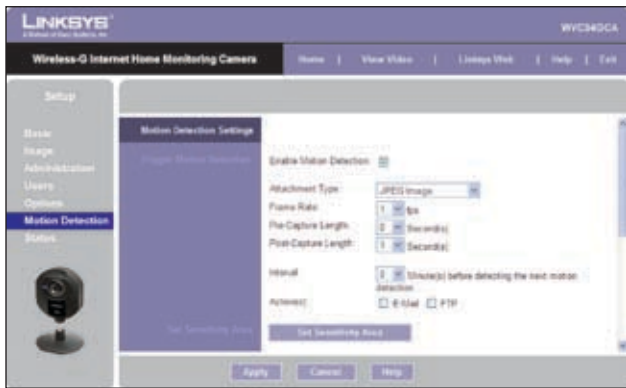
Audio Port To change the Audio Port, enter the new port number (even values only, from 1024 to 65534) in the field provided. The default Audio Port, **2242**, can be used for multicasting and does not normally need to be reconfigured. If this port number needs to be changed, contact your network administrator.

Time to Live Enter the maximum length of time (usually measured as the number of network routers that can be passed before the data arrives at its destination or is dropped) within which the data must reach its destination. The value must be from 1 to 255. The default value is **16**.

To save your changes, click **Apply**. To cancel any unsaved changes, click **Cancel**. To get additional information about the screen's features, click **Help**.

Setup > Motion Detection

The *Setup > Motion Detection* screen allows you to configure the Camera's motion detection settings.



Setup > Motion Detection Screen

Trigger Motion Detection

Enable Motion Detection Check this box to enable Motion Detection.

Attachment Type Select the type of attachment to be sent, either **JPEG** or **Video**. If JPEG is selected, a series of images will be attached to the e-mail as individual files. If Video is selected, a single video file will be attached.

Frame Rate If the *Attachment Type* field is set to **JPEG**, select the frame rate (number of frames to be captured per second), from 1 to 5. The default value is **1**.

Video Format If the *Attachment Type* is set to **Video**, select the video format, either ASF, MPEG-4, or 3GP.

Pre-Capture Length This refers to video footage up to the moment when motion is detected. Select how many seconds' worth of this video will be saved. This value must be between 0 and 4 seconds.

Post-Capture Length Select how many seconds' worth of video will be saved starting from the moment motion is detected. This value must be between 1 and 5 seconds.

Interval Enter the time in minutes that must pass between motion detection events. Valid values are 0-5, 10, or 15. The default is **2**. A value of 0 indicates no delay between events.

Action(s) Select the action(s) to be performed upon motion detection. Select **E-Mail** to send an e-mail with a video attachment to a selected recipient, or select **FTP** to send the video to a selected FTP server.

E-Mail Alert

If the *Action(s)* field is set to E-Mail, fill in the following fields:

Send To Enter the e-mail address where e-mail will be sent upon motion detection. You can optionally specify up to three addresses.

Show "From" as Enter the e-mail address to be used as the *From* field in the e-mail to be sent.

Subject Enter the *Subject* field for the e-mail, consisting of 48 alphanumeric characters or less.

SMTP Port Number Enter the SMTP port number from 1 to 65535. The default is **25**.

SMTP Mail Server If you want to use an SMTP mail server, check the box next to **Specify a SMTP Mail Server**. Then enter the mail server's name in the field provided.

My Mail Server Requires Authentication If you are using an SMTP mail server that requires authentication (you must log in with a username and password), check this box, then fill in the *Account Name* and *Password* fields.

Test E-Mail Click this button to send a test e-mail to the address indicated by the *Send To* field.

FTP

If the *Action(s)* field is set to FTP, fill in the following fields:

FTP Server Enter the FTP server name.

Port Enter the FTP server's port number.

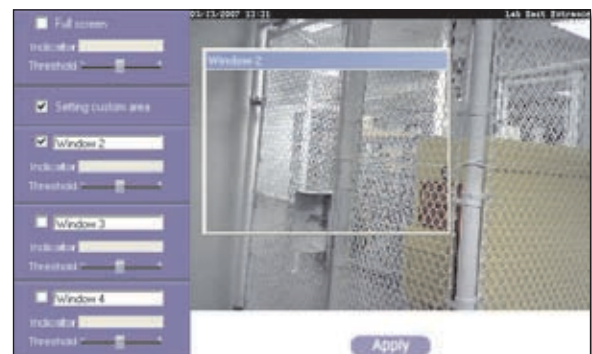
Login Name and Password Enter the login name and password for the account on the FTP server.

Passive Mode Select **Enable** (default) to enable passive mode, or **Disable** to disable it.

File Path Name Enter the path to the location where the file will be saved on the FTP server.

Set Sensitivity Area

Set Sensitivity Area If you want to specify the sensitivity area settings for motion detection, click this button to display the *Set Sensitivity Area* window. The *Set Sensitivity Area* window lets you specify the area of the video screen that is used to detect motion. This is either the full screen, or up to three user-defined custom areas within the full screen.



Set Sensitivity Area Window

The following fields appear on the left side of the *Set Sensitivity Area* window for each sensitivity area. Specify the settings as needed, then click **Apply**.

- **Full Screen or Window 2-4** This is the name of the sensitivity area, either **Full screen** by default, or if *Setting Custom Area* is selected, **Window 2**, **Window 3**, or **Window 4** (custom areas). To change a custom area name to a more appropriate name, such as **Front Door**, enter the new name in this field.
- **Setting Custom Area** To specify custom area(s) within the full screen, check this box, then configure up to three custom sensitivity areas. By default only one area, **Window 2**, is selected. To create an additional area, check the box next to its name. You can move or resize each area as needed. Custom areas may also overlap.
- **Threshold** Slide this to the left to reduce the area's sensitivity, or to the right to increase sensitivity.

New Motion Trigger Schedule

This section allows you to create a schedule that determines when motion detection will be active. To do this, you define one or more "trigger" events, or periods during which motion detection will be in effect. For each trigger event, fill in the following fields.

Trigger Motion Detection Specify how often this trigger event occurs: **Every day**, **Weekdays (Mon - Fri)**, or on specific days of the week (**Sunday to Saturday**).

Start Time and End Time Select the starting and ending times for the event.

Add Click **Add** to add the new event to the schedule.

Clear Click **Clear** to clear the schedule of all events.

Delete To delete an event from the *Schedule List*, select the event, then click **Delete**.

Schedule List This displays all of the scheduled trigger events that you have defined and saved. It is empty by default.

To save your changes, click **Apply**. To cancel any unsaved changes, click **Cancel**. To get additional information about the screen's features, click **Help**.

Setup > Status

The *Setup > Status* screen allows you to view the Camera's status information and log.



Setup > Status Screen

System Status

Firmware Version The version of the currently installed firmware.

MAC Address The MAC Address of the Camera.

Camera Name The name you gave to the Camera.

Description Information about the Camera, such as location.

Date/Time The current date and time.

Network

Network Type The wireless network's mode.

IP Address The Camera's IP Address.

Subnet Mask The Camera's Subnet Mask.

Gateway The Camera's Gateway address.

Wireless

SSID The wireless network's SSID or name.

Channel No The wireless network's channel setting.

Security The wireless network's encryption level.

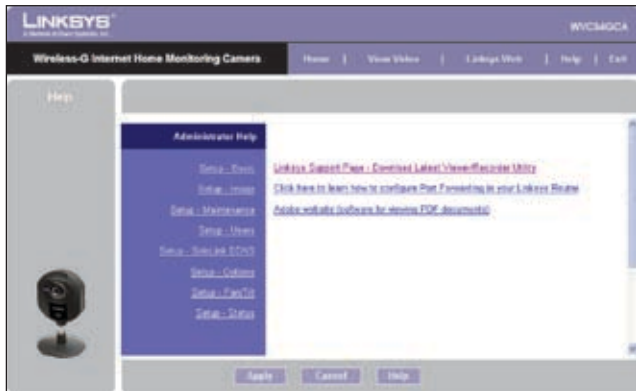
Log

System Log This shows the Camera's activities. To empty the log, click **Clear Log**.

To get the Camera's most up-to-date information, click **Refresh**. To get additional information about the screen's features, click **Help**.

Help

Through the *Help* screen, you'll find links to additional resources for the Camera and its Utility. If you select the **Help** tab directly from the *Welcome* screen, then you will see the *User Help* screen and will only be able to access these resources. If you first log in to access the Camera's Setup and then select the **Help** tab, you will see the *Administrator Help* screen and will be able to restore factory defaults and upgrade the Camera's firmware.



Setup > Help Screen

- **Setup** Click any of the topics in the bar on the left to get help information.
- **Linksys Support Page - Download Latest Viewer/Recorder Utility** Click this link to download the most recent version of the Camera Utility from the Linksys website, www.linksys.com.
- **Click here to learn how to configure Port Forwarding in your Linksys Router** If you are going to use the DDNS Service, you need to set up port forwarding on your router. For instructions on how to configure a Linksys router, click this link. If you have a different router, refer to your router's documentation.
- **Adobe website (software for viewing PDF documents)** If you do not have Adobe Acrobat Reader, click this link to download it.

Appendix A: Troubleshooting

I can't view the Camera's video using Internet Explorer.

Make sure the OCX plug-in was correctly installed. If you're not sure, re-install the plug-in by following these instructions

- On the *Welcome* screen of the Camera's Web-based Utility, click **View Video**.
- A screen mentioning a security warning about an OCX plug-in will appear. Click **Yes** to allow the plug-in to be installed.
- You should then be able to view the Camera's streaming video.

If you still cannot view the video, make sure you have the rights to install the plug-in in your PC's Internet Explorer. If not, log into your computer as an administrator and install the plug-in.

Then you can check if the OCX plug-in has been installed. Follow these instructions:

- From Internet Explorer, go to **Tools** and **Internet Options**.
- On the General screen, click **Settings** under *Temporary Internet files*.
- Click **View Objects**. You should see a file named NetCamPlayerWeb Control installed.

The OCX plug-in is installed in Internet Explorer, but I cannot view any video.

Make sure Microsoft Internet Explorer 5.5 or higher is installed. Then delete the OCX plug-in by following these instructions:

- From Internet Explorer, go to **Tools** and **Internet Options**.
- On the General screen, click **Settings** under *Temporary Internet files*.
- Click **View Objects**.
- You should see a file named NetCamPlayerWeb Control installed. Delete this file from the list.
- The next time you click **View Video** from the web browser, you will be prompted to re-install the OCX plug-in.

When powering on the Camera, I can't immediately access the Camera from my computer.

Make sure the Camera's LED is continuously lit. When it is flashing, the Camera is initializing.

I'm not able to play my recording video files.

Make sure you have Microsoft Windows Media Player 7 or higher. If you don't, you can download the latest version from www.microsoft.com.

I have two Cameras and see two WVC54GCAs listed in my Camera Utility. When I click to view both Cameras, I see the video of only one Camera.

Make sure that the Cameras have different camera or device names. You can change this by using the Web-based Utility or running the Setup Wizard. If you use the Web-based Utility, log in and click the Setup tab. Then on the Basic screen, change the Camera Name.

When I view video remotely via the Internet, the video is very slow.

Video performance is greatly affected by your Internet connection speed. You can lower the Camera's image quality to speed up the video. Through the Camera's Web-based Utility, click the **Setup** and **Image** tabs, and then lower the image quality on the Image screen.

I cannot access the Setup tab of the Camera's Web-based Utility.

Make sure you have administrator rights. Only an administrator can change the Camera's settings.

I want to access the Camera when I'm away from home, but somehow I can't connect.

If your network uses a dynamic IP address supplied by your ISP, then the IP address you use to reach the Camera will change as well. You need to use the TZO DDNS Service, so you can access the Camera using its domain name while the service keeps track of the IP address changes. To set up a Dynamic Domain Name Service (DDNS) account, click the Setup tab of the Camera's Web-based Utility, then click the **Options** tab. Then configure the settings in the DDNS section of the screen.

Important: To allow remote access to the Camera, you will also have to use the port forwarding feature on your network router.



WEB: If your questions are not addressed here, refer to the Linksys website, www.linksys.com

Appendix B: Specifications

Model	WVC54GCA
Standards	IEEE 802.11g, IEEE 802.3, IEEE 802.3u
Ports	Ethernet, Power
Buttons	Reset
LEDs	Power
Cabling Type	Cat5
Number of Antennas	1 Internal
Connector Type	N/A
Detachable Antenna	No
UPnP able/cert	UPnP Advertise
.Net Support	N/A
Security Features	WEP-64, WEP-128, WPA, WPA2
Image Sensor	CMOS
Lens	Fixed Focus
Resolution	640 x 480, 320 x 240, 160 x 128
Relative Illumination	5.1 Lux
Effective Focus	3 mm
Sensitivity	3.0V/Lux-sec
Field of View	61.48 degrees
Compression Algorithm	MPEG-4 and MJPEG
Record File Format	ASF
Brightness	Auto/Manual Adjustment

Environmental

Dimensions	3.54" x 4.72" x 1.46" (90 x 120 x 37mm)
Weight	4.59 oz (0.13 kg)
Power	5V 1A
Certification	FCC, CE, CB, UL, C-Tick, PSB/SPRING, IDA
Operating Temp.	32 to 104°F (0 to 40°C)
Storage Temp.	-4 to 158°F (-20 to 70°C)
Operating Humidity	10 to 80% Noncondensing
Storage Humidity	0 to 90% Noncondensing

Minimum System Requirements

1 Camera	PC with 2 GHz or faster processor 512 MB RAM Microsoft Windows 2000, XP or Vista 500MB of available hard drive space Graphics card with a minimum of 128 MB Internet Explorer 6.0 (or above), Mozilla Firefox, Netscape 7.0 (or above) DirectX 9.0 (or above) CD-ROM Drive Windows Media Player 9 or higher
Up to 9 Cameras	PC with 3 GHz dual-core processor 1 GB RAM Microsoft Windows 2000, XP or Vista 4 GB of available hard drive space Graphics card with a minimum of 256 MB Internet Explorer 6.0 (or above), Mozilla Firefox, Netscape 7.0 (or above) DirectX 9.0 (or above) CD-ROM Drive Windows Media Player 9 or higher

Appendix C: Warranty Information

Limited Warranty

Linksys warrants this Linksys hardware product against defects in materials and workmanship under normal use for the Warranty Period, which begins on the date of purchase by the original end-user purchaser and lasts for the period specified below:

- One (1) year for new product
- Ninety (90) days for refurbished product

This limited warranty is non-transferable and extends only to the original end-user purchaser. Your exclusive remedy and Linksys' entire liability under this limited warranty will be for Linksys, at its option, to (a) repair the product with new or refurbished parts, (b) replace the product with a reasonably available equivalent new or refurbished Linksys product, or (c) refund the purchase price of the product less any rebates. Any repaired or replacement products will be warranted for the remainder of the original Warranty Period or thirty (30) days, whichever is longer. All products and parts that are replaced become the property of Linksys.

Exclusions and Limitations

This limited warranty does not apply if: (a) the product assembly seal has been removed or damaged, (b) the product has been altered or modified, except by Linksys, (c) the product damage was caused by use with non-Linksys products, (d) the product has not been installed, operated, repaired, or maintained in accordance with instructions supplied by Linksys, (e) the product has been subjected to abnormal physical or electrical stress, misuse, negligence, or accident, (f) the serial number on the Product has been altered, defaced, or removed, or (g) the product is supplied or licensed for beta, evaluation, testing or demonstration purposes for which Linksys does not charge a purchase price or license fee.

ALL SOFTWARE PROVIDED BY LINKSYS WITH THE PRODUCT, WHETHER FACTORY LOADED ON THE PRODUCT OR CONTAINED ON MEDIA ACCOMPANYING THE PRODUCT, IS PROVIDED "AS IS" WITHOUT WARRANTY OF ANY KIND. Without limiting the foregoing, Linksys does not warrant that the operation of the product or software will be uninterrupted or error free. Also, due to the continual development of new techniques for intruding upon and attacking networks, Linksys does not warrant that the product, software or any equipment, system or network on which the product or software is used will be free of vulnerability to intrusion or attack. The product may include or be bundled with third party software or

service offerings. This limited warranty shall not apply to such third party software or service offerings. This limited warranty does not guarantee any continued availability of a third party's service for which this product's use or operation may require.

TO THE EXTENT NOT PROHIBITED BY LAW, ALL IMPLIED WARRANTIES AND CONDITIONS OF MERCHANTABILITY, SATISFACTORY QUALITY OR FITNESS FOR A PARTICULAR PURPOSE ARE LIMITED TO THE DURATION OF THE WARRANTY PERIOD. ALL OTHER EXPRESS OR IMPLIED CONDITIONS, REPRESENTATIONS AND WARRANTIES, INCLUDING, BUT NOT LIMITED TO, ANY IMPLIED WARRANTY OF NON-INFRINGEMENT, ARE DISCLAIMED. Some jurisdictions do not allow limitations on how long an implied warranty lasts, so the above limitation may not apply to you. This limited warranty gives you specific legal rights, and you may also have other rights which vary by jurisdiction.

TO THE EXTENT NOT PROHIBITED BY LAW, IN NO EVENT WILL LINKSYS BE LIABLE FOR ANY LOST DATA, REVENUE OR PROFIT, OR FOR SPECIAL, INDIRECT, CONSEQUENTIAL, INCIDENTAL OR PUNITIVE DAMAGES, REGARDLESS OF THE THEORY OF LIABILITY (INCLUDING NEGLIGENCE), ARISING OUT OF OR RELATED TO THE USE OF OR INABILITY TO USE THE PRODUCT (INCLUDING ANY SOFTWARE), EVEN IF LINKSYS HAS BEEN ADVISED OF THE POSSIBILITY OF SUCH DAMAGES. IN NO EVENT WILL LINKSYS' LIABILITY EXCEED THE AMOUNT PAID BY YOU FOR THE PRODUCT. The foregoing limitations will apply even if any warranty or remedy provided under this limited warranty fails of its essential purpose. Some jurisdictions do not allow the exclusion or limitation of incidental or consequential damages, so the above limitation or exclusion may not apply to you.

Obtaining Warranty Service

If you have a question about your product or experience a problem with it, please go to www.linksys.com/support where you will find a variety of online support tools and information to assist you with your product. If the product proves defective during the Warranty Period, contact Linksys Technical Support for instructions on how to obtain warranty service. The telephone number for Linksys Technical Support in your area can be found in the product User Guide and at www.linksys.com. Have your product serial number and proof of purchase on hand when calling. A DATED PROOF OF ORIGINAL PURCHASE IS REQUIRED TO PROCESS WARRANTY CLAIMS. If you are requested to return your product, you will be given a Return Materials Authorization (RMA) number. You are responsible for properly packaging and shipping your product to Linksys at your cost and risk. You must include the RMA number and a copy of your dated proof of original purchase when returning your product. Products received without a RMA number and dated proof of original purchase will be

rejected. Do not include any other items with the product you are returning to Linksys. Defective product covered by this limited warranty will be repaired or replaced and returned to you without charge. Customers outside of the United States of America and Canada are responsible for all shipping and handling charges, custom duties, VAT and other associated taxes and charges. Repairs or replacements not covered under this limited warranty will be subject to charge at Linksys' then-current rates.

Technical Support

This limited warranty is neither a service nor a support contract. Information about Linksys' current technical support offerings and policies (including any fees for support services) can be found at:

www.linksys.com/support.

This limited warranty is governed by the laws of the jurisdiction in which the Product was purchased by you.

Please direct all inquiries to: Linksys, P.O. Box 18558, Irvine, CA 92623.

Appendix D: Regulatory Information

FCC Statement

This device complies with Part 15 of the FCC Rules. Operation is subject to the following two conditions: (1) This device may not cause harmful interference, and (2) this device must accept any interference received, including interference that may cause undesired operation.

This product has been tested and complies with the specifications for a Class B digital device, pursuant to Part 15 of the FCC Rules. These limits are designed to provide reasonable protection against harmful interference in a residential installation. This equipment generates, uses, and can radiate radio frequency energy and, if not installed and used according to the instructions, may cause harmful interference to radio communications. However, there is no guarantee that interference will not occur in a particular installation. If this equipment does cause harmful interference to radio or television reception, which is found by turning the equipment off and on, the user is encouraged to try to correct the interference by one or more of the following measures:

- Reorient or relocate the receiving antenna
- Increase the separation between the equipment or devices
- Connect the equipment to an outlet other than the receiver's
- Consult a dealer or an experienced radio/TV technician for assistance

FCC Caution: Any changes or modifications not expressly approved by the party responsible for compliance could void the user's authority to operate this equipment.

FCC Radiation Exposure Statement

This equipment complies with FCC radiation exposure limits set forth for an uncontrolled environment. This equipment should be installed and operated with minimum distance 20cm between the radiator and your body.

This transmitter must not be co-located or operating in conjunction with any other antenna or transmitter. IEEE 802.11b or 802.11g operation of this product in the USA is firmware-limited to channels 1 through 11.

Safety Notices

- Caution: To reduce the risk of fire, use only No.26 AWG or larger telecommunication line cord.
- Do not use this product near water, for example, in a wet basement or near a swimming pool.
- Avoid using this product during an electrical storm. There may be a remote risk of electric shock from lightning.



WARNING: This product contains lead, known to the State of California to cause cancer, and birth defects or other reproductive harm. Wash hands after handling.

Industry Canada Statement

This Class B digital apparatus complies with Canadian ICES-003 and RSS210.

Operation is subject to the following two conditions:

1. This device may not cause interference and
2. This device must accept any interference, including interference that may cause undesired operation of the device. This device has been designed to operate with an antenna having a maximum gain of 2dBi. Antenna having a higher gain is strictly prohibited per regulations of Industry Canada. The required antenna impedance is 50 ohms.

To reduce potential radio interference to other users, the antenna type and its gain should be so chosen that the EIRP is not more than required for successful communication.

Industry Canada Radiation Exposure Statement:

This equipment complies with IC radiation exposure limits set forth for an uncontrolled environment. This equipment should be installed and operated with minimum distance 20cm between the radiator & your body.

This transmitter must not be co-located or operating in conjunction with any other antenna or transmitter.

Avis d'Industrie Canada

Cet appareil numérique de la classe B est conforme aux normes NMB-003 et RSS210 du Canada.

L'utilisation de ce dispositif est autorisée seulement aux conditions suivantes :

1. il ne doit pas produire de brouillage et
2. il doit accepter tout brouillage radioélectrique reçu, même si ce brouillage est susceptible de compromettre le fonctionnement du dispositif. Le dispositif a été conçu pour fonctionner avec une antenne ayant un gain maximum de 2 dBi. Les règlements d'Industrie Canada interdisent strictement l'utilisation d'antennes dont le gain est supérieur à cette limite. L'impédance requise de l'antenne est de 50 ohms.

Afin de réduire le risque d'interférence aux autres utilisateurs, le type d'antenne et son gain doivent être choisis de façon à ce que la puissance isotrope rayonnée équivalente (p.i.r.e.) ne soit pas supérieure au niveau requis pour obtenir une communication satisfaisante.

Avis d'Industrie Canada concernant l'exposition aux radiofréquences :

Ce matériel est conforme aux limites établies par IC en matière d'exposition aux radiofréquences dans un environnement non contrôlé. Ce matériel doit être installé et utilisé à une distance d'au moins 20 cm entre l'antenne et le corps de l'utilisateur.

L'émetteur ne doit pas être placé près d'une autre antenne ou d'un autre émetteur, ou fonctionner avec une autre antenne ou un autre émetteur.

Wireless Disclaimer

The maximum performance for wireless is derived from IEEE Standard 802.11 specifications. Actual performance can vary, including lower wireless network capacity, data throughput rate, range and coverage. Performance depends on many factors, conditions and variables, including distance from the access point, volume of network traffic, building materials and construction, operating system used, mix of wireless products used, interference and other adverse conditions.

Avis de non-responsabilité concernant les appareils sans fil


Les performances maximales pour les réseaux sans fil sont tirées des spécifications de la norme IEEE 802.11. Les performances réelles peuvent varier, notamment en fonction de la capacité du réseau sans fil, du débit de la transmission de données, de la portée et de la couverture. Les performances dépendent de facteurs, conditions et variables multiples, en particulier de la distance par rapport au point d'accès, du volume du trafic réseau, des matériaux utilisés dans le bâtiment et du type de construction, du système d'exploitation et de la combinaison de produits sans fil utilisés, des interférences et de toute autre condition défavorable.

User Information for Consumer Products Covered by EU Directive 2002/96/EC on Waste Electric and Electronic Equipment (WEEE)


This document contains important information for users with regards to the proper disposal and recycling of Linksys products. Consumers are required to comply with this notice for all electronic products bearing the following symbol:




English - Environmental Information for Customers in the European Union

European Directive 2002/96/EC requires that the equipment bearing this symbol  on the product and/or its packaging must not be disposed of with unsorted municipal waste. The symbol indicates that this product should be disposed of separately from regular household waste streams. It is your responsibility to dispose of this and other electric and electronic equipment via designated collection facilities appointed by the government or local authorities. Correct disposal and recycling will help prevent potential negative consequences to the environment and human health. For more detailed information about the disposal of your old equipment, please contact your local authorities, waste disposal service, or the shop where you purchased the product.


Български (Bulgarian) - Информация относно опазването на околната среда за потребители в Европейския съюз

Европейска директива 2002/96/EC изисква уредите, носещи този символ  върху изделието и/или опаковката му, да не се изхвърлят с несортирани битови отпадъци. Символът обозначава, че изделието трябва да се изхвърля отделно от сметосъбирането на обикновените битови отпадъци. Вашата отговорност е този и другите електрически и електронни уреди да се изхвърлят в предварително определени от държавните или общински органи специализирани пунктове за събиране. Правилното изхвърляне и рециклиране ще спомогнат да се предотвратят евентуални вредни за околната среда и здравето на населението последствия. За по-подробна информация относно изхвърлянето на вашите стари уреди се обърнете към местните власти, службите за сметосъбиране или магазина, от който сте закупили уреда.


Čeština (Czech) - Informace o ochraně životního prostředí pro zákazníky v zemích Evropské unie

Evropská směrnice 2002/96/ES zakazuje, aby zařízení označené tímto symbolem  na produktu anebo na obalu bylo likvidováno s netříděným komunálním odpadem. Tento symbol udává, že daný produkt musí být likvidován odděleně od běžného komunálního odpadu. Odpovídáte za likvidaci tohoto produktu a dalších elektrických a elektronických zařízení prostřednictvím určených sběrných míst stanovených vládou nebo místními úřady. Správná likvidace a recyklace pomáhá předcházet potenciálním negativním dopadům na životní prostředí a lidské zdraví. Podrobnější informace o likvidaci starého vybavení si laskavě vyžádejte od místních úřadů, podniku zabývajícího se likvidací komunálních odpadů nebo obchodu, kde jste produkt zakoupili.


Dansk (Danish) - Miljøinformation for kunder i EU

EU-direktiv 2002/96/EF kræver, at udstyr der bærer dette symbol  på produktet og/eller emballagen ikke må bortskaffes som usorteret kommunalt affald. Symbolet betyder, at dette produkt skal bortskaffes adskilt fra det almindelige husholdningsaffald. Det er dit ansvar at bortskaffe dette og andet elektrisk og elektronisk udstyr via bestemte indsamlingssteder udpeget af staten eller de lokale myndigheder. Korrekt bortskaffelse og genvinding vil hjælpe med til at undgå mulige skader for miljøet og menneskers sundhed. Kontakt venligst de lokale myndigheder, renovationstjenesten eller den butik, hvor du har købt produktet, angående mere detaljeret information om bortskaffelse af dit gamle udstyr.


Deutsch (German) - Umweltinformation für Kunden innerhalb der Europäischen Union

Die Europäische Richtlinie 2002/96/EC verlangt, dass technische Ausrüstung, die direkt am Gerät und/oder an der Verpackung mit diesem Symbol versehen ist , nicht zusammen mit unsortiertem Gemeindeabfall entsorgt werden darf. Das Symbol weist darauf hin, dass das Produkt von regulärem Haushaltsmüll getrennt entsorgt werden sollte. Es liegt in Ihrer Verantwortung, dieses Gerät und andere elektrische und elektronische Geräte über die dafür zuständigen und von der Regierung oder örtlichen Behörden dazu bestimmten Sammelstellen zu entsorgen. Ordnungsgemäßes Entsorgen und Recyceln trägt dazu bei, potentielle negative Folgen für Umwelt und die menschliche Gesundheit zu vermeiden. Wenn Sie weitere Informationen zur Entsorgung Ihrer Altgeräte benötigen, wenden Sie sich bitte an die örtlichen Behörden oder städtischen Entsorgungsdienste oder an den Händler, bei dem Sie das Produkt erworben haben.

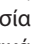
Eesti (Estonian) - Keskkonnaalane informatsioon Euroopa Liidus asuvatele klientidele

Euroopa Liidu direktiivi 2002/96/EÜ nõuete kohaselt on seadmeid, millel on tootel või pakendil käesolev sümbol , keelatud kõrvaldada koos sorteerimata olmejäätmetega. See sümbol näitab, et toode tuleks kõrvaldada eraldi tavalistest olmejäätmevoogudest. Olete kohustatud kõrvaldama käesoleva ja ka muud elektri- ja elektroonikaseadmed riigi või kohalike ametiasutuste poolt ette nähtud kogumispunktide kaudu. Seadmete korrektn kõrvaldamine ja ringlussevõtt aitab vältida võimalikke negatiivseid tagajärgi keskkonnale ning inimeste tervisele. Vanade seadmete kõrvaldamise kohta täpsema informatsiooni saamiseks võtke palun ühendust kohalike ametiasutustega, jäätmekäitlusfirmaga või kauplusega, kust te toote ostsite.


Español (Spanish) - Información medioambiental para clientes de la Unión Europea

La Directiva 2002/96/CE de la UE exige que los equipos que lleven este símbolo , en el propio aparato y/o en su embalaje no deben eliminarse junto con otros residuos urbanos no seleccionados. El símbolo indica que el producto en cuestión debe separarse de los residuos domésticos convencionales con vistas a su eliminación. Es responsabilidad suya desechar este y cualesquiera otros aparatos eléctricos y electrónicos a través de los puntos de recogida que ponen a su disposición el gobierno y las autoridades locales. Al desechar y reciclar correctamente estos aparatos estará contribuyendo a evitar posibles consecuencias negativas para el medio ambiente y la salud de las personas. Si desea obtener información más detallada sobre la eliminación segura de su aparato usado, consulte a las autoridades locales, al servicio de recogida y eliminación de residuos de su zona o pregunte en la tienda donde adquirió el producto.

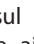
Ελληνικά (Greek) - Στοιχεία περιβαλλοντικής προστασίας για πελάτες εντός της Ευρωπαϊκής Ένωσης

Η Κοινοτική Οδηγία 2002/96/EC απαιτεί ότι ο εξοπλισμός ο οποίος φέρει αυτό το σύμβολο , στο προϊόν και/ή στη συσκευασία του δεν πρέπει να απορρίπτεται μαζί με τα μικτά κοινотικά απορρίμματα. Το σύμβολο υποδεικνύει ότι αυτό το προϊόν θα πρέπει να απορρίπτεται ξεχωριστά από τα συνήθη οικιακά απορρίμματα. Είστε υπεύθυνος για την απόρριψη του παρόντος και άλλου ηλεκτρικού και ηλεκτρονικού εξοπλισμού μέσω των καθορισμένων εγκαταστάσεων συγκέντρωσης απορριμμάτων οι οποίες παρέχονται από το κράτος ή τις αρμόδιες τοπικές αρχές. Η σωστή απόρριψη και ανακύκλωση συμβάλλει στην πρόληψη πιθανών αρνητικών συνεπειών για το περιβάλλον και την υγεία. Για περισσότερες πληροφορίες σχετικά με την απόρριψη του παλιού σας εξοπλισμού, παρακαλώ επικοινωνήστε με τις τοπικές αρχές, τις υπηρεσίες απόρριψης ή το κατάστημα από το οποίο αγοράσατε το προϊόν.

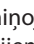
Français (French) - Informations environnementales pour les clients de l'Union européenne

La directive européenne 2002/96/CE exige que l'équipement sur lequel est apposé ce symbole , sur le produit et/ou son emballage ne soit pas jeté avec les autres ordures ménagères. Ce symbole indique que le produit doit être éliminé dans un circuit distinct de celui pour les déchets des ménages. Il est de votre responsabilité de jeter ce matériel ainsi que tout autre matériel électrique ou électronique par les moyens de collecte indiqués par le gouvernement et les pouvoirs publics des collectivités territoriales. L'élimination et le recyclage en bonne et due forme ont pour but de lutter contre l'impact néfaste potentiel de ce type de produits sur l'environnement et la santé publique. Pour plus d'informations sur le mode d'élimination de votre ancien équipement, veuillez prendre contact avec les pouvoirs publics locaux, le service de traitement des déchets, ou l'endroit où vous avez acheté le produit.

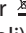
Italiano (Italian) - Informazioni relative all'ambiente per i clienti residenti nell'Unione Europea

La direttiva europea 2002/96/EC richiede che le apparecchiature contrassegnate con questo simbolo , sul prodotto e/o sull'imballaggio non siano smaltite insieme ai rifiuti urbani non differenziati. Il simbolo indica che questo prodotto non deve essere smaltito insieme ai normali rifiuti domestici. È responsabilità del proprietario smaltire sia questi prodotti sia le altre apparecchiature elettriche ed elettroniche mediante le specifiche strutture di raccolta indicate dal governo o dagli enti pubblici locali. Il corretto smaltimento ed il riciclaggio aiuteranno a prevenire conseguenze potenzialmente negative per l'ambiente e per la salute dell'essere umano. Per ricevere informazioni più dettagliate circa lo smaltimento delle vecchie apparecchiature in Vostro possesso, Vi invitiamo a contattare gli enti pubblici di competenza, il servizio di smaltimento rifiuti o il negozio nel quale avete acquistato il prodotto.

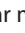
Latviešu valoda (Latvian) - Ekoloģiska informācija klientiem Eiropas Savienības jurisdikcijā

Direktīvā 2002/96/EK ir prasība, ka aprīkojumu, kam pievienota zīme , uz paša izstrādājuma vai uz tā iesaiņojuma, nedrīkst izmest nešķīrotā veidā kopā ar komunālajiem atkritumiem (tiem, ko rada vietēji iedzīvotāji un uzņēmumi). Šī zīme nozīmē to, ka šī ierīce ir jāizmet atkritumos tā, lai tā nenonāktu kopā ar parastiem mājāsaimniecības atkritumiem. Jūsu pienākums ir šo un citas elektriskas un elektroniskas ierīces izmest atkritumos, izmantojot īpašus atkritumu savākšanas veidus un līdzekļus, ko nodrošina valsts un pašvaldību iestādes. Ja izmešana atkritumos na pārstrāde tiek veikta pareizi, tad mazinās iespējamais kaitējums dabai un cilvēku veselībai. Sīkākas ziņas par novecojuša aprīkojuma izmešanu atkritumos jūs varat saņemt vietējā pašvaldībā, atkritumu savākšanas dienestā, kā arī veikalā, kur iegādājāties šo izstrādājumu.

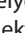
Lietuvškai (Lithuanian) - Aplinkosaugos informacija, skirta Europos Sąjungos vartotojams

Europos direktyva 2002/96/EC numato, kad įrangos, kuri ir  kurios pakuotė yra pažymėta šiuo simboliu (įveskite simbolį), negalima šalinti kartu su nerūšiuotomis komunalinėmis atliekomis. Šis simbolis rodo, kad gaminį reikia šalinti atskirai nuo bendro buitinių atliekų srauto. Jūs privalote užtikrinti, kad ši ir kita elektros ar elektroninė įranga būtų šalinama per tam tikras nacionalinės ar vietinės valdžios nustatytas atliekų rinkimo sistemas. Tinkamai šalinant ir perdirbant atliekas, bus išvengta galimos žalos aplinkai ir žmonių sveikatai. Daugiau informacijos apie jūsų senos įrangos šalinimą gali pateikti vietinės valdžios institucijos, atliekų šalinimo tarnybos arba parduotuvės, kuriose įsigijote tą gaminį.

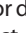
Malti (Maltese) - Informazzjoni Ambjentali għal Kliġenti fl-Unjoni Ewropea

Id-Direttiva Ewropea 2002/96/KE titlob li t-tagħmir li jkun fi h is-simbolu  fuq il-prodott u/jew fuq l-ippakkjar ma jistax jintrema ma' skart municipali li ma għex isseparat. Is-simbolu jindika li dan il-prodott għandu jintrema separatament minn ma' l-iskart domestiku regolari. Hija responsabbiltà tiegħek li tarmi dan it-tagħmir u kull tagħmir ieħor ta' l-elettriku u elettroniku permezz ta' faċilitajiet ta' għbir appuntati apposta mill-gvern jew mill-awtoritajiet lokali. Ir-rimi b'mod korrett u r-riċiklaġġ jgħin jipprevjeni konsegwenzi negattivi potenzjali għall-ambjent u għas-saħħa tal-bniedem. Għal aktar informazzjoni dettaljata dwar ir-rimi tat-tagħmir antik tiegħek, jekk jogħġbok ikkuntattja lill-awtoritajiet lokali tiegħek, is-servizzi għar-rimi ta' l-iskart, jew il-ħanut minn fejn xtrajt il-prodott.


Magyar (Hungarian) - Környezetvédelmi információ az európai uniós vásárlók számára

A 2002/96/EC számú európai uniós irányelv megkívánja, hogy azokat a termékeket, amelyeken, és/vagy amelyek csomagolásán az alábbi címke  megjelenik, tilos a többi szelektálatlan lakossági hulladékkal együtt kidobni. A címke azt jelöli, hogy az adott termék kidobásakor a szokványos háztartási hulladékélezálítási rendszerektől elkülönített eljárást kell alkalmazni. Az Ön felelőssége, hogy ezt, és más elektromos és elektronikus berendezéseit a kormányzati vagy a helyi hatóságok által kijelölt gyűjtőredszereken keresztül számolja fel. A megfelelő hulladékfeldolgozás segít a környezetre és az emberi egészségre potenciálisan ártalmas negatív hatások megelőzésében. Ha elavult berendezéseinek felszámolásához további részletes információra van szüksége, kérjük, lépjen kapcsolatba a helyi hatóságokkal, a hulladékfeldolgozási szolgálattal, vagy azzal üzlettel, ahol a terméket vásárolta.


Nederlands (Dutch) - Milieu-informatie voor klanten in de Europese Unie

De Europese Richtlijn 2002/96/EC schrijft voor dat apparatuur die is voorzien van dit symbool  op het product of de verpakking, niet mag worden ingezameld met niet-gescheiden huishoudelijk afval. Dit symbool geeft aan dat het product apart moet worden ingezameld. U bent zelf verantwoordelijk voor de vernietiging van deze en andere elektrische en elektronische apparatuur via de daarvoor door de landelijke of plaatselijke overheid aangewezen inzamelingskanalen. De juiste vernietiging en recycling van deze apparatuur voorkomt mogelijke negatieve gevolgen voor het milieu en de gezondheid. Voor meer informatie over het vernietigen van uw oude apparatuur neemt u contact op met de plaatselijke autoriteiten of afvalverwerkingsdienst, of met de winkel waar u het product hebt aangeschaft.


Norsk (Norwegian) - Miljøinformasjon for kunder i EU

EU-direktiv 2002/96/EF krever at utstyr med følgende symbol  avbildet på produktet og/eller pakningen, ikke må kastes sammen med usortert avfall. Symbolet indikerer at dette produktet skal håndteres atskilt fra ordinær avfallsinnsamling for husholdningsavfall. Det er ditt ansvar å kvitte deg med dette produktet og annet elektrisk og elektronisk avfall via egne innsamlingsordninger slik myndighetene eller kommunene bestemmer. Korrekt avfallshåndtering og gjenvinning vil være med på å forhindre mulige negative konsekvenser for miljø og helse. For nærmere informasjon om håndtering av det kasserte utstyret ditt, kan du ta kontakt med kommunen, en innsamlingsstasjon for avfall eller butikken der du kjøpte produktet.


Polski (Polish) - Informacja dla klientów w Unii Europejskiej o przepisach dotyczących ochrony środowiska

Dyrektywa Europejska 2002/96/EC wymaga, aby sprzęt oznaczony symbolem  znajdującym się na produkcie i/lub jego opakowaniu nie był wyrzucany razem z innymi niesortowanymi odpadami komunalnymi. Symbol ten wskazuje, że produkt nie powinien być usuwany razem ze zwykłymi odpadami z gospodarstw domowych. Na Państwu spoczywa obowiązek wyrzucania tego i innych urządzeń elektrycznych oraz elektronicznych w punktach odbioru wyznaczonych przez władze krajowe lub lokalne. Pozbywanie się sprzętu we właściwy sposób i jego recykling pomogą zapobiec potencjalnie negatywnym konsekwencjom dla środowiska i zdrowia ludzkiego. W celu uzyskania szczegółowych informacji o usuwaniu starego sprzętu, prosimy zwrócić się do lokalnych władz, służb oczyszczania miasta lub sklepu, w którym produkt został nabyty.


Português (Portuguese) - Informação ambiental para clientes da União Europeia

A Directiva Europeia 2002/96/CE exige que o equipamento que exibe este símbolo  no produto e/ou na sua embalagem não seja eliminado junto com os resíduos municipais não separados. O símbolo indica que este produto deve ser eliminado separadamente dos resíduos domésticos regulares. É da sua responsabilidade eliminar este e qualquer outro equipamento eléctrico e electrónico através das instalações de recolha designadas pelas autoridades governamentais ou locais. A eliminação e reciclagem correctas ajudarão a prevenir as consequências negativas para o ambiente e para a saúde humana. Para obter informações mais detalhadas sobre a forma de eliminar o seu equipamento antigo, contacte as autoridades locais, os serviços de eliminação de resíduos ou o estabelecimento comercial onde adquiriu o produto.


Română (Romanian) - Informații de mediu pentru clienții din Uniunea Europeană

Directiva europeană 2002/96/CE impune ca echipamentele care prezintă acest simbol  pe produs și/sau pe ambalajul acestuia să nu fie casate împreună cu gunoiul menajer municipal. Simbolul indică faptul că acest produs trebuie să fie casat separat de gunoiul menajer obișnuit. Este responsabilitatea dvs. să cașiți acest produs și alte echipamente electrice și electronice prin intermediul unităților de colectare special desemnate de guvern sau de autoritățile locale. Casarea și reciclarea corecte vor ajuta la prevenirea potențialelor consecințe negative asupra sănătății mediului și a oamenilor. Pentru mai multe informații detaliate cu privire la casarea acestui echipament vechi, contactați autoritățile locale, serviciul de salubritate sau magazinul de la care ați achiziționat produsul.


Slovenčina (Slovak) - Informácie o ochrane životného prostredia pre zákazníkov v Európskej únii

Podľa európskej smernice 2002/96/ES zariadenie s týmto symbolom  na produkte a/alebo jeho balení nesmie byť likvidované spolu s netriedeným komunálnym odpadom. Symbol znamená, že produkt by sa mal likvidovať oddelene od bežného odpadu z domácností. Je vašou povinnosťou likvidovať toto i ostatné elektrické a elektronické zariadenia prostredníctvom špecializovaných zberných zariadení určených vládou alebo miestnymi orgánmi. Správna likvidácia a recyklácia pomôže zabrániť prípadným negatívnym dopadom na životné prostredie a zdravie ľudí. Ak máte záujem o podrobnejšie informácie o likvidácii starého zariadenia, obráťte sa, prosím, na miestne orgány, organizácie zaoberajúce sa likvidáciou odpadov alebo obchod, v ktorom ste si produkt zakúpili.


Slovenčina (Slovene) - Okoljske informacije za stranke v Evropski uniji

Evropska direktiva 2002/96/EC prepoveduje odlaganje opreme, označene s tem simbolom  – na izdelku in/ali na embalaži – med običajne, nerazvrščene odpadke. Ta simbol opozarja, da je treba izdelek odvreči ločeno od preostalih gospodinjskih odpadkov. Vaša odgovornost je, da to in preostalo električno in elektronsko opremo odnesete na posebna zbirališča, ki jih določijo državne ustanove ali lokalna uprava. S pravilnim odlaganjem in recikliranjem boste preprečili morebitne škodljive vplive na okolje in zdravje ljudi. Če želite izvedeti več o odlaganju stare opreme, se obrnite na lokalno upravo, odpad ali trgovino, kjer ste izdelek kupili.

Suomi (Finnish) - Ympäristöä koskevia tietoja EU-alueen asiakkaille

EU-direktiivi 2002/96/EY edellyttää, että jos laitteistossa on tämä symboli  itse tuotteessa ja/tai sen pakkauksessa, laitteistoa ei saa hävittää lajittelemattoman yhdyskuntajätteen mukana. Symboli merkitsee sitä, että tämä tuote on hävitettävä erillään tavallisesta kotitalousjätteestä. Sinun vastuullasi on hävittää tämä elektroniikkatuote ja muut vastaavat elektroniikkatuotteet viemällä tuote tai tuotteet viranomaisten määräämään keräyspisteeseen. Laitteiston oikea hävittäminen estää mahdolliset kielteiset vaikutukset ympäristöön ja ihmisten terveyteen. Lisätietoja vanhan laitteiston oikeasta hävitystavasta saa paikallisilta viranomaisilta, jätteenhävityspalvelusta tai siitä myymälästä, josta ostit tuotteen.

Svenska (Swedish) - Miljöinformation för kunder i Europeiska unionen

Det europeiska direktivet 2002/96/EC kräver att utrustning med denna symbol  på produkten och/eller förpackningen inte får kastas med osorterat kommunalt avfall. Symbolen visar att denna produkt bör kastas efter att den avskiljts från vanligt hushållsavfall. Det faller på ditt ansvar att kasta denna och annan elektrisk och elektronisk utrustning på fastställda samlingsplatser utsedda av regeringen eller lokala myndigheter. Korrekt kassering och återvinning skyddar mot eventuella negativa konsekvenser för miljön och personhälsa. För mer detaljerad information om kassering av din gamla utrustning kontaktar du dina lokala myndigheter, avfallshanteringen eller butiken där du köpte produkten.



WEB: For additional information, please visit www.linksys.com

Appendix E: Software License Agreement

Software in Linksys Products

This product from Cisco-Linksys LLC or from one of its affiliates Cisco Systems-Linksys (Asia) Pte Ltd. or Cisco-Linksys K.K. ("Linksys") contains software (including firmware) originating from Linksys and its suppliers and may also contain software from the open source community. Any software originating from Linksys and its suppliers is licensed under the Linksys Software License Agreement contained at Schedule 1 below. You may also be prompted to review and accept that Linksys Software License Agreement upon installation of the software

Any software from the open source community is licensed under the specific license terms applicable to that software made available by Linksys at www.linksys.com/gpl or as provided for in Schedules 2, 3 and 4 below.

Where such specific license terms entitle you to the source code of such software, that source code is upon request available at cost from Linksys for at least three years from the purchase date of this product and may also be available for download from www.linksys.com/gpl. For detailed license terms and additional information on open source software in Linksys products please look at the Linksys public web site at: www.linksys.com/gpl/ or Schedules 2, 3 or 4 below as applicable.

BY DOWNLOADING OR INSTALLING THE SOFTWARE, OR USING THE PRODUCT CONTAINING THE SOFTWARE, YOU ARE CONSENTING TO BE BOUND BY THE SOFTWARE LICENSE AGREEMENTS BELOW. IF YOU DO NOT AGREE TO ALL OF THESE TERMS, THEN YOU MAY NOT DOWNLOAD, INSTALL OR USE THE SOFTWARE. YOU MAY RETURN UNUSED SOFTWARE (OR, IF THE SOFTWARE IS SUPPLIED AS PART OF ANOTHER PRODUCT, THE UNUSED PRODUCT) FOR A FULL REFUND UP TO 30 DAYS AFTER ORIGINAL PURCHASE, SUBJECT TO THE RETURN PROCESS AND POLICIES OF THE PARTY FROM WHICH YOU PURCHASED SUCH PRODUCT OR SOFTWARE.

Software Licenses

The software Licenses applicable to software from Linksys are made available at the Linksys public web site at: www.linksys.com. For your convenience of reference, a copy of the Linksys Software License Agreement and the main open source code licenses used by Linksys in its products are contained in the Schedules below.

Schedule 1 - Linksys Software License Agreement

THIS LICENSE AGREEMENT IS BETWEEN YOU AND CISCO-LINKSYS LLC OR ONE OF ITS AFFILIATES CISCO SYSTEMS-LINKSYS (ASIA) PTE LTD. OR CISCO-LINKSYS K.K. ("LINKSYS") LICENSING THE SOFTWARE INSTEAD OF CISCO-LINKSYS LLC. BY DOWNLOADING OR INSTALLING THE SOFTWARE, OR USING THE PRODUCT CONTAINING THE SOFTWARE, YOU ARE CONSENTING TO BE BOUND BY THIS AGREEMENT. IF YOU DO NOT AGREE TO ALL OF THESE TERMS, THEN YOU MAY NOT DOWNLOAD, INSTALL OR USE THE SOFTWARE. YOU MAY RETURN UNUSED SOFTWARE (OR, IF THE SOFTWARE IS SUPPLIED AS PART OF ANOTHER PRODUCT, THE UNUSED PRODUCT) FOR A FULL REFUND UP TO 30 DAYS AFTER ORIGINAL PURCHASE, SUBJECT TO THE RETURN PROCESS AND POLICIES OF THE PARTY FROM WHICH YOU PURCHASED SUCH PRODUCT OR SOFTWARE.

License. Subject to the terms and conditions of this Agreement, Linksys grants the original end user purchaser of the Linksys product containing the Software ("You") a nonexclusive license to use the Software solely as embedded in or (where authorized in the applicable documentation) for communication with such product. This license may not be sublicensed, and is not transferable except to a person or entity to which you transfer ownership of the complete Linksys product containing the Software, provided you permanently transfer all rights under this Agreement and do not retain any full or partial copies of the Software, and the recipient agrees to the terms of this Agreement.

"Software" includes, and this Agreement will apply to (a) the software of Linksys or its suppliers provided in or with the applicable Linksys product, excluding technology from the open source community, and (b) any upgrades, updates, bug fixes or modified versions ("Upgrades") or backup copies of the Software supplied to You by Linksys or an authorized reseller, provided you already hold a valid license to the original software and have paid any applicable fee for the Upgrade.

Protection of Information. The Software and documentation contain trade secrets and/or copyrighted materials of Linksys or its suppliers. You will not copy or modify the Software or decompile, decrypt, reverse engineer or disassemble the Software (except to the extent expressly permitted by law notwithstanding this provision), and You will not disclose or make available such trade secrets or copyrighted material in any form to any third party. Title to and ownership of the Software and documentation and any portion thereof, will remain solely with Linksys or its suppliers.

Collection and Processing of Information. You agree that Linksys and/or its affiliates may, from time to time, collect and process information about your Linksys product and/or the Software and/or your use of either in order (i) to enable Linksys to offer you Upgrades; (ii) to ensure that

your Linksys product and/or the Software is being used in accordance with the terms of this Agreement; (iii) to provide improvements to the way Linksys delivers technology to you and to other Linksys customers; (iv) to enable Linksys to comply with the terms of any agreements it has with any third parties regarding your Linksys product and/or Software and/or (v) to enable Linksys to comply with all applicable laws and/or regulations, or the requirements of any regulatory authority or government agency. Linksys and/ or its affiliates may collect and process this information provided that it does not identify you personally. Your use of your Linksys product and/or the Software constitutes this consent by you to Linksys and/ or its affiliates' collection and use of such information and, for EEA customers, to the transfer of such information to a location outside the EEA.

Software Upgrades etc. If the Software enables you to receive Upgrades, you may elect at any time to receive these Upgrades either automatically or manually. If you elect to receive Upgrades manually or you otherwise elect not to receive or be notified of any Upgrades, you may expose your Linksys product and/or the Software to serious security threats and/or some features within your Linksys product and/or Software may become inaccessible. There may be circumstances where we apply an Upgrade automatically in order to comply with changes in legislation, legal or regulatory requirements or as a result of requirements to comply with the terms of any agreements Linksys has with any third parties regarding your Linksys product and/or the Software. You will always be notified of any Upgrades being delivered to you. The terms of this license will apply to any such Upgrade unless the Upgrade in question is accompanied by a separate license, in which event the terms of that license will apply.

Open Source Software. The GPL or other open source code incorporated into the Software and the open source license for such source code are available for free download at <http://www.linksys.com/gpl>. If You would like a copy of the GPL or other open source code in this Software on a CD, Linksys will mail to You a CD with such code for \$9.99 plus the cost of shipping, upon request.

Term and Termination. You may terminate this License at any time by destroying all copies of the Software and documentation. Your rights under this License will terminate immediately without notice from Linksys if You fail to comply with any provision of this Agreement.

Limited Warranty. The warranty terms and period specified in the applicable Linksys Product User Guide shall also apply to the Software.

Disclaimer of Liabilities. IN NO EVENT WILL LINKSYS OR ITS SUPPLIERS BE LIABLE FOR ANY LOST DATA, REVENUE OR PROFIT, OR FOR SPECIAL, INDIRECT, CONSEQUENTIAL, INCIDENTAL OR PUNITIVE DAMAGES, REGARDLESS OF CAUSE (INCLUDING NEGLIGENCE), ARISING OUT OF

OR RELATED TO THE USE OF OR INABILITY TO USE THE SOFTWARE, EVEN IF LINKSYS HAS BEEN ADVISED OF THE POSSIBILITY OF SUCH DAMAGES. IN NO EVENT WILL LINKSYS' LIABILITY EXCEED THE AMOUNT PAID BY YOU FOR THE PRODUCT. The foregoing limitations will apply even if any warranty or remedy under this Agreement fails of its essential purpose. Some jurisdictions do not allow the exclusion or limitation of incidental or consequential damages, so the above limitation or exclusion may not apply to You.

Export. Software, including technical data, may be subject to U.S. export control laws and regulations and/or export or import regulations in other countries. You agree to comply strictly with all such laws and regulations.

U.S. Government Users. The Software and documentation qualify as "commercial items" as defined at 48 C.F.R. 2.101 and 48 C.F.R. 12.212. All Government users acquire the Software and documentation with only those rights herein that apply to non-governmental customers.

General Terms. This Agreement will be governed by and construed in accordance with the laws of the State of California, without reference to conflict of laws principles. The United Nations Convention on Contracts for the International Sale of Goods will not apply. If any portion of this Agreement is found to be void or unenforceable, the remaining provisions will remain in full force and effect. This Agreement constitutes the entire agreement between the parties with respect to the Software and supersedes any conflicting or additional terms contained in any purchase order or elsewhere.

END OF SCHEDULE 1

Schedule 2

If this Linksys product contains open source software licensed under Version 2 of the "GNU General Public License" then the license terms below in this Schedule 2 will apply to that open source software. The license terms below in this Schedule 2 are from the public web site at <http://www.gnu.org/copyleft/gpl.html>

GNU GENERAL PUBLIC LICENSE

Version 2, June 1991

Copyright © 1989, 1991 Free Software Foundation, Inc.

51 Franklin Street, Fifth Floor, Boston, MA 02110-1301, USA

Everyone is permitted to copy and distribute verbatim copies of this license document, but changing it is not allowed.

Preamble

The licenses for most software are designed to take away your freedom to share and change it. By contrast, the

GNU General Public License is intended to guarantee your freedom to share and change free software—to make sure the software is free for all its users. This General Public License applies to most of the Free Software Foundation's software and to any other program whose authors commit to using it. (Some other Free Software Foundation software is covered by the GNU Lesser General Public License instead.) You can apply it to your programs, too.

When we speak of free software, we are referring to freedom, not price. Our General Public Licenses are designed to make sure that you have the freedom to distribute copies of free software (and charge for this service if you wish), that you receive source code or can get it if you want it, that you can change the software or use pieces of it in new free programs; and that you know you can do these things.

To protect your rights, we need to make restrictions that forbid anyone to deny you these rights or to ask you to surrender the rights. These restrictions translate to certain responsibilities for you if you distribute copies of the software, or if you modify it.

For example, if you distribute copies of such a program, whether gratis or for a fee, you must give the recipients all the rights that you have. You must make sure that they, too, receive or can get the source code. And you must show them these terms so they know their rights.

We protect your rights with two steps: (1) copyright the software, and (2) offer you this license which gives you legal permission to copy, distribute and/or modify the software.

Also, for each author's protection and ours, we want to make certain that everyone understands that there is no warranty for this free software. If the software is modified by someone else and passed on, we want its recipients to know that what they have is not the original, so that any problems introduced by others will not reflect on the original authors' reputations.

Finally, any free program is threatened constantly by software patents. We wish to avoid the danger that redistributors of a free program will individually obtain patent licenses, in effect making the program proprietary. To prevent this, we have made it clear that any patent must be licensed for everyone's free use or not licensed at all.

The precise terms and conditions for copying, distribution and modification follow.

TERMS AND CONDITIONS FOR COPYING, DISTRIBUTION AND MODIFICATION

0. This License applies to any program or other work which contains a notice placed by the copyright holder saying it may be distributed under the terms of this General Public License. The "Program", below, refers to any such program or work, and a "work based on the Program" means either the Program or any derivative work under copyright law: that is to say, a work containing the Program or a portion of it, either verbatim or with modifications and/or translated into another language. (Hereinafter, translation is included without limitation in the term "modification".) Each licensee is addressed as "you".

Activities other than copying, distribution and modification are not covered by this License; they are outside its scope. The act of running the Program is not restricted, and the output from the Program is covered only if its contents constitute a work based on the Program (independent of having been made by running the Program). Whether that is true depends on what the Program does.

1. You may copy and distribute verbatim copies of the Program's source code as you receive it, in any medium, provided that you conspicuously and appropriately publish on each copy an appropriate copyright notice and disclaimer of warranty; keep intact all the notices that refer to this License and to the absence of any warranty; and give any other recipients of the Program a copy of this License along with the Program.

You may charge a fee for the physical act of transferring a copy, and you may at your option offer warranty protection in exchange for a fee.

2. You may modify your copy or copies of the Program or any portion of it, thus forming a work based on the Program, and copy and distribute such modifications or work under the terms of Section 1 above, provided that you also meet all of these conditions:

a. You must cause the modified files to carry prominent notices stating that you changed the files and the date of any change.

b. You must cause any work that you distribute or publish, that in whole or in part contains or is derived from the Program or any part thereof, to be licensed as a whole at no charge to all third parties under the terms of this License.

- c. If the modified program normally reads commands interactively when run, you must cause it, when started running for such interactive use in the most ordinary way, to print or display an announcement including an appropriate copyright notice and a notice that there is no warranty (or else, saying that you provide a warranty) and that users may redistribute the program under these conditions, and telling the user how to view a copy of this License. (Exception: if the Program itself is interactive but does not normally print such an announcement, your work based on the Program is not required to print an announcement.)

These requirements apply to the modified work as a whole. If identifiable sections of that work are not derived from the Program, and can be reasonably considered independent and separate works in themselves, then this License, and its terms, do not apply to those sections when you distribute them as separate works. But when you distribute the same sections as part of a whole which is a work based on the Program, the distribution of the whole must be on the terms of this License, whose permissions for other licensees extend to the entire whole, and thus to each and every part regardless of who wrote it.

Thus, it is not the intent of this section to claim rights or contest your rights to work written entirely by you; rather, the intent is to exercise the right to control the distribution of derivative or collective works based on the Program.

In addition, mere aggregation of another work not based on the Program with the Program (or with a work based on the Program) on a volume of a storage or distribution medium does not bring the other work under the scope of this License.

3. You may copy and distribute the Program (or a work based on it, under Section 2) in object code or executable form under the terms of Sections 1 and 2 above provided that you also do one of the following:
 - a. Accompany it with the complete corresponding machine-readable source code, which must be distributed under the terms of Sections 1 and 2 above on a medium customarily used for software interchange; or,
 - b. Accompany it with a written offer, valid for at least three years, to give any third party, for a charge no more than your cost of physically performing source distribution, a complete machine-readable copy of the corresponding source code, to be distributed under the terms of Sections 1 and 2 above on a medium customarily used for software interchange; or,

- c. Accompany it with the information you received as to the offer to distribute corresponding source code. (This alternative is allowed only for noncommercial distribution and only if you received the program in object code or executable form with such an offer, in accord with Subsection b above.)

The source code for a work means the preferred form of the work for making modifications to it. For an executable work, complete source code means all the source code for all modules it contains, plus any associated interface definition files, plus the scripts used to control compilation and installation of the executable. However, as a special exception, the source code distributed need not include anything that is normally distributed (in either source or binary form) with the major components (compiler, kernel, and so on) of the operating system on which the executable runs, unless that component itself accompanies the executable.

If distribution of executable or object code is made by offering access to copy from a designated place, then offering equivalent access to copy the source code from the same place counts as distribution of the source code, even though third parties are not compelled to copy the source along with the object code.

4. You may not copy, modify, sublicense, or distribute the Program except as expressly provided under this License. Any attempt otherwise to copy, modify, sublicense or distribute the Program is void, and will automatically terminate your rights under this License. However, parties who have received copies, or rights, from you under this License will not have their licenses terminated so long as such parties remain in full compliance.
5. You are not required to accept this License, since you have not signed it. However, nothing else grants you permission to modify or distribute the Program or its derivative works. These actions are prohibited by law if you do not accept this License. Therefore, by modifying or distributing the Program (or any work based on the Program), you indicate your acceptance of this License to do so, and all its terms and conditions for copying, distributing or modifying the Program or works based on it.
6. Each time you redistribute the Program (or any work based on the Program), the recipient automatically receives a license from the original licensor to copy, distribute or modify the Program subject to these terms and conditions. You may not impose any further restrictions on the recipients' exercise of the rights granted herein. You are not responsible for enforcing compliance by third parties to this License.

7. If, as a consequence of a court judgment or allegation of patent infringement or for any other reason (not limited to patent issues), conditions are imposed on you (whether by court order, agreement or otherwise) that contradict the conditions of this License, they do not excuse you from the conditions of this License. If you cannot distribute so as to satisfy simultaneously your obligations under this License and any other pertinent obligations, then as a consequence you may not distribute the Program at all. For example, if a patent license would not permit royalty-free redistribution of the Program by all those who receive copies directly or indirectly through you, then the only way you could satisfy both it and this License would be to refrain entirely from distribution of the Program.

If any portion of this section is held invalid or unenforceable under any particular circumstance, the balance of the section is intended to apply and the section as a whole is intended to apply in other circumstances.

It is not the purpose of this section to induce you to infringe any patents or other property right claims or to contest validity of any such claims; this section has the sole purpose of protecting the integrity of the free software distribution system, which is implemented by public license practices. Many people have made generous contributions to the wide range of software distributed through that system in reliance on consistent application of that system; it is up to the author/donor to decide if he or she is willing to distribute software through any other system and a licensee cannot impose that choice.

This section is intended to make thoroughly clear what is believed to be a consequence of the rest of this License.

8. If the distribution and/or use of the Program is restricted in certain countries either by patents or by copyrighted interfaces, the original copyright holder who places the Program under this License may add an explicit geographical distribution limitation excluding those countries, so that distribution is permitted only in or among countries not thus excluded. In such case, this License incorporates the limitation as if written in the body of this License.
9. The Free Software Foundation may publish revised and/or new versions of the General Public License from time to time. Such new versions will be similar in spirit to the present version, but may differ in detail to address new problems or concerns.

Each version is given a distinguishing version number. If the Program specifies a version number of this License which applies to it and "any later version", you have the option of following the terms and conditions either of that version or of any later version published by the Free Software Foundation. If the Program does

not specify a version number of this License, you may choose any version ever published by the Free Software Foundation.

10. If you wish to incorporate parts of the Program into other free programs whose distribution conditions are different, write to the author to ask for permission. For software which is copyrighted by the Free Software Foundation, write to the Free Software Foundation; we sometimes make exceptions for this. Our decision will be guided by the two goals of preserving the free status of all derivatives of our free software and of promoting the sharing and reuse of software generally.

NO WARRANTY

11. BECAUSE THE PROGRAM IS LICENSED FREE OF CHARGE, THERE IS NO WARRANTY FOR THE PROGRAM, TO THE EXTENT PERMITTED BY APPLICABLE LAW. EXCEPT WHEN OTHERWISE STATED IN WRITING THE COPYRIGHT HOLDERS AND/OR OTHER PARTIES PROVIDE THE PROGRAM "AS IS" WITHOUT WARRANTY OF ANY KIND, EITHER EXPRESSED OR IMPLIED, INCLUDING, BUT NOT LIMITED TO, THE IMPLIED WARRANTIES OF MERCHANTABILITY AND FITNESS FOR A PARTICULAR PURPOSE. THE ENTIRE RISK AS TO THE QUALITY AND PERFORMANCE OF THE PROGRAM IS WITH YOU. SHOULD THE PROGRAM PROVE DEFECTIVE, YOU ASSUME THE COST OF ALL NECESSARY SERVICING, REPAIR OR CORRECTION.
12. IN NO EVENT UNLESS REQUIRED BY APPLICABLE LAW OR AGREED TO IN WRITING WILL ANY COPYRIGHT HOLDER, OR ANY OTHER PARTY WHO MAY MODIFY AND/OR REDISTRIBUTE THE PROGRAM AS PERMITTED ABOVE, BE LIABLE TO YOU FOR DAMAGES, INCLUDING ANY GENERAL, SPECIAL, INCIDENTAL OR CONSEQUENTIAL DAMAGES ARISING OUT OF THE USE OR INABILITY TO USE THE PROGRAM (INCLUDING BUT NOT LIMITED TO LOSS OF DATA OR DATA BEING RENDERED INACCURATE OR LOSSES SUSTAINED BY YOU OR THIRD PARTIES OR A FAILURE OF THE PROGRAM TO OPERATE WITH ANY OTHER PROGRAMS), EVEN IF SUCH HOLDER OR OTHER PARTY HAS BEEN ADVISED OF THE POSSIBILITY OF SUCH DAMAGES.

END OF TERMS AND CONDITIONS

END OF SCHEDULE 2

Schedule 3

If this Linksys product contains open source software licensed under Version 2.1 of the "GNU Lesser General Public License" then the license terms below in this Schedule 3 will apply to that open source software. The license terms below in this Schedule 3 are from the public web site at <http://www.gnu.org/licenses/old-licenses/lgpl-2.1.html>.

GNU LESSER GENERAL PUBLIC LICENSE

Version 2.1, February 1999

Copyright (C) 1991, 1999 Free Software Foundation, Inc.

51 Franklin Street, Fifth Floor, Boston, MA 02110-1301, USA

Everyone is permitted to copy and distribute verbatim copies of this license document, but changing it is not allowed.

[This is the first released version of the Lesser GPL. It also counts as the successor of the GNU Library Public License, version 2, hence the version number 2.1.]

Preamble

The licenses for most software are designed to take away your freedom to share and change it. By contrast, the GNU General Public Licenses are intended to guarantee your freedom to share and change free software—to make sure the software is free for all its users.

This license, the Lesser General Public License, applies to some specially designated software packages—typically libraries—of the Free Software Foundation and other authors who decide to use it. You can use it too, but we suggest you first think carefully about whether this license or the ordinary General Public License is the better strategy to use in any particular case, based on the explanations below.

When we speak of free software, we are referring to freedom of use, not price. Our General Public Licenses are designed to make sure that you have the freedom to distribute copies of free software (and charge for this service if you wish); that you receive source code or can get it if you want it; that you can change the software and use pieces of it in new free programs; and that you are informed that you can do these things.

To protect your rights, we need to make restrictions that forbid distributors to deny you these rights or to ask you to surrender these rights. These restrictions translate to certain responsibilities for you if you distribute copies of the library or if you modify it.

For example, if you distribute copies of the library, whether gratis or for a fee, you must give the recipients all the rights that we gave you. You must make sure that they, too, receive or can get the source code. If you link other code with the library, you must provide complete object files to the recipients, so that they can relink them with the library after making changes to the library and recompiling it. And you must show them these terms so they know their rights.

We protect your rights with a two-step method: (1) we copyright the library, and (2) we offer you this license, which gives you legal permission to copy, distribute and/or modify the library.

To protect each distributor, we want to make it very clear that there is no warranty for the free library. Also, if the library is modified by someone else and passed on, the recipients should know that what they have is not the original version, so that the original author's reputation will not be affected by problems that might be introduced by others.

Finally, software patents pose a constant threat to the existence of any free program. We wish to make sure that a company cannot effectively restrict the users of a free program by obtaining a restrictive license from a patent holder. Therefore, we insist that any patent license obtained for a version of the library must be consistent with the full freedom of use specified in this license.

Most GNU software, including some libraries, is covered by the ordinary GNU General Public License. This license, the GNU Lesser General Public License, applies to certain designated libraries, and is quite different from the ordinary General Public License. We use this license for certain libraries in order to permit linking those libraries into non-free programs.

When a program is linked with a library, whether statically or using a shared library, the combination of the two is legally speaking a combined work, a derivative of the original library. The ordinary General Public License therefore permits such linking only if the entire combination fits its criteria of freedom. The Lesser General Public License permits more lax criteria for linking other code with the library.

We call this license the “Lesser” General Public License because it does Less to protect the user's freedom than the ordinary General Public License. It also provides other free software developers Less of an advantage over competing non-free programs. These disadvantages are the reason we use the ordinary General Public License for many libraries. However, the Lesser license provides advantages in certain special circumstances.

For example, on rare occasions, there may be a special need to encourage the widest possible use of a certain library, so that it becomes a de-facto standard. To achieve this, non-free programs must be allowed to use the library. A more frequent case is that a free library does the same job as widely used non-free libraries. In this case, there is little to gain by limiting the free library to free software only, so we use the Lesser General Public License.

In other cases, permission to use a particular library in non-free programs enables a greater number of people to use a large body of free software. For example, permission to use the GNU C Library in non-free programs enables many more people to use the whole GNU operating system, as well as its variant, the GNU/Linux operating system.

Although the Lesser General Public License is Less protective of the users' freedom, it does ensure that the user of a program that is linked with the Library has the

freedom and the wherewithal to run that program using a modified version of the Library.

The precise terms and conditions for copying, distribution and modification follow. Pay close attention to the difference between a “work based on the library” and a “work that uses the library”. The former contains code derived from the library, whereas the latter must be combined with the library in order to run.

GNU LESSER GENERAL PUBLIC LICENSE

TERMS AND CONDITIONS FOR COPYING, DISTRIBUTION AND MODIFICATION

0. This License Agreement applies to any software library or other program which contains a notice placed by the copyright holder or other authorized party saying it may be distributed under the terms of this Lesser General Public License (also called “this License”). Each licensee is addressed as “you”.

A “library” means a collection of software functions and/or data prepared so as to be conveniently linked with application programs (which use some of those functions and data) to form executables.

The “Library”, below, refers to any such software library or work which has been distributed under these terms. A “work based on the Library” means either the Library or any derivative work under copyright law: that is to say, a work containing the Library or a portion of it, either verbatim or with modifications and/or translated straightforwardly into another language. (Hereinafter, translation is included without limitation in the term “modification”.)

“Source code” for a work means the preferred form of the work for making modifications to it. For a library, complete source code means all the source code for all modules it contains, plus any associated interface definition files, plus the scripts used to control compilation and installation of the library.

Activities other than copying, distribution and modification are not covered by this License; they are outside its scope. The act of running a program using the Library is not restricted, and output from such a program is covered only if its contents constitute a work based on the Library (independent of the use of the Library in a tool for writing it). Whether that is true depends on what the Library does and what the program that uses the Library does.

1. You may copy and distribute verbatim copies of the Library’s complete source code as you receive it, in any medium, provided that you conspicuously and appropriately publish on each copy an appropriate copyright notice and disclaimer of warranty; keep intact all the notices that refer to this License and to the absence of any warranty; and distribute a copy of this License along with the Library.

You may charge a fee for the physical act of transferring a copy, and you may at your option offer warranty protection in exchange for a fee.

2. You may modify your copy or copies of the Library or any portion of it, thus forming a work based on the Library, and copy and distribute such modifications or work under the terms of Section 1 above, provided that you also meet all of these conditions:

- a) The modified work must itself be a software library.
- b) You must cause the files modified to carry prominent notices stating that you changed the files and the date of any change.
- c) You must cause the whole of the work to be licensed at no charge to all third parties under the terms of this License.
- d) If a facility in the modified Library refers to a function or a table of data to be supplied by an application program that uses the facility, other than as an argument passed when the facility is invoked, then you must make a good faith effort to ensure that, in the event an application does not supply such function or table, the facility still operates, and performs whatever part of its purpose remains meaningful.

(For example, a function in a library to compute square roots has a purpose that is entirely well-defined independent of the application. Therefore, Subsection 2d requires that any application-supplied function or table used by this function must be optional: if the application does not supply it, the square root function must still compute square roots.)

These requirements apply to the modified work as a whole. If identifiable sections of that work are not derived from the Library, and can be reasonably considered independent and separate works in themselves, then this License, and its terms, do not apply to those sections when you distribute them as separate works. But when you distribute the same sections as part of a whole which is a work based on the Library, the distribution of the whole must be on the terms of this License, whose permissions for other licensees extend to the entire whole, and thus to each and every part regardless of who wrote it.

Thus, it is not the intent of this section to claim rights or contest your rights to work written entirely by you; rather, the intent is to exercise the right to control the distribution of derivative or collective works based on the Library.

In addition, mere aggregation of another work not based on the Library with the Library (or with a work based on the Library) on a volume of a storage or distribution medium does not bring the other work under the scope of this License.

3. You may opt to apply the terms of the ordinary GNU General Public License instead of this License to a given copy of the Library. To do this, you must alter all the notices that refer to this License, so that they refer to the ordinary GNU General Public License, version 2, instead of to this License. (If a newer version than version 2 of the ordinary GNU General Public License has appeared, then you can specify that version instead if you wish.) Do not make any other change in these notices.

Once this change is made in a given copy, it is irreversible for that copy, so the ordinary GNU General Public License applies to all subsequent copies and derivative works made from that copy.

This option is useful when you wish to copy part of the code of the Library into a program that is not a library.

4. You may copy and distribute the Library (or a portion or derivative of it, under Section 2) in object code or executable form under the terms of Sections 1 and 2 above provided that you accompany it with the complete corresponding machine-readable source code, which must be distributed under the terms of Sections 1 and 2 above on a medium customarily used for software interchange.

If distribution of object code is made by offering access to copy from a designated place, then offering equivalent access to copy the source code from the same place satisfies the requirement to distribute the source code, even though third parties are not compelled to copy the source along with the object code.

5. A program that contains no derivative of any portion of the Library, but is designed to work with the Library by being compiled or linked with it, is called a “work that uses the Library”. Such a work, in isolation, is not a derivative work of the Library, and therefore falls outside the scope of this License.

However, linking a “work that uses the Library” with the Library creates an executable that is a derivative of the Library (because it contains portions of the Library), rather than a “work that uses the library”. The executable is therefore covered by this License. Section 6 states terms for distribution of such executables.

When a “work that uses the Library” uses material from a header file that is part of the Library, the object code for the work may be a derivative work of the Library even though the source code is not. Whether this is true is especially significant if the work can be linked without the Library, or if the work is itself a library. The threshold for this to be true is not precisely defined by law.

If such an object file uses only numerical parameters, data structure layouts and accessors, and small macros and small inline functions (ten lines or less in length), then the use of the object file is unrestricted, regardless of whether it is legally a derivative work. (Executables containing this object code plus portions of the Library will still fall under Section 6.)

Otherwise, if the work is a derivative of the Library, you may distribute the object code for the work under the terms of Section 6. Any executables containing that work also fall under Section 6, whether or not they are linked directly with the Library itself.

6. As an exception to the Sections above, you may also combine or link a “work that uses the Library” with the Library to produce a work containing portions of the Library, and distribute that work under terms of your choice, provided that the terms permit modification of the work for the customer’s own use and reverse engineering for debugging such modifications.

You must give prominent notice with each copy of the work that the Library is used in it and that the Library and its use are covered by this License. You must supply a copy of this License. If the work during execution displays copyright notices, you must include the copyright notice for the Library among them, as well as a reference directing the user to the copy of this License. Also, you must do one of these things:

- a) Accompany the work with the complete corresponding machine-readable source code for the Library including whatever changes were used in the work (which must be distributed under Sections 1 and 2 above); and, if the work is an executable linked with the Library, with the complete machine-readable “work that uses the Library”; as object code and/or source code, so that the user can modify the Library and then relink to produce a modified executable containing the modified Library. (It is understood that the user who changes the contents of definitions files in the Library will not necessarily be able to recompile the application to use the modified definitions.)

- b) Use a suitable shared library mechanism for linking with the Library. A suitable mechanism is one that (1) uses at run time a copy of the library already present on the user's computer system, rather than copying library functions into the executable, and (2) will operate properly with a modified version of the library, if the user installs one, as long as the modified version is interface-compatible with the version that the work was made with.
- c) Accompany the work with a written offer, valid for at least three years, to give the same user the materials specified in Subsection 6a, above, for a charge no more than the cost of performing this distribution.
- d) If distribution of the work is made by offering access to copy from a designated place, offer equivalent access to copy the above specified materials from the same place.
- e) Verify that the user has already received a copy of these materials or that you have already sent this user a copy.

For an executable, the required form of the "work that uses the Library" must include any data and utility programs needed for reproducing the executable from it. However, as a special exception, the materials to be distributed need not include anything that is normally distributed (in either source or binary form) with the major components (compiler, kernel, and so on) of the operating system on which the executable runs, unless that component itself accompanies the executable.

It may happen that this requirement contradicts the license restrictions of other proprietary libraries that do not normally accompany the operating system. Such a contradiction means you cannot use both them and the Library together in an executable that you distribute.

- 7. You may place library facilities that are a work based on the Library side-by-side in a single library together with other library facilities not covered by this License, and distribute such a combined library, provided that the separate distribution of the work based on the Library and of the other library facilities is otherwise permitted, and provided that you do these two things:
 - a) Accompany the combined library with a copy of the same work based on the Library, uncombined with any other library facilities. This must be distributed under the terms of the Sections above.
 - b) Give prominent notice with the combined library of the fact that part of it is a work based on the Library, and explaining where to find the accompanying uncombined form of the same work.

- 8. You may not copy, modify, sublicense, link with, or distribute the Library except as expressly provided under this License. Any attempt otherwise to copy, modify, sublicense, link with, or distribute the Library is void, and will automatically terminate your rights under this License. However, parties who have received copies, or rights, from you under this License will not have their licenses terminated so long as such parties remain in full compliance.
- 9. You are not required to accept this License, since you have not signed it. However, nothing else grants you permission to modify or distribute the Library or its derivative works. These actions are prohibited by law if you do not accept this License. Therefore, by modifying or distributing the Library (or any work based on the Library), you indicate your acceptance of this License to do so, and all its terms and conditions for copying, distributing or modifying the Library or works based on it.
- 10. Each time you redistribute the Library (or any work based on the Library), the recipient automatically receives a license from the original licensor to copy, distribute, link with or modify the Library subject to these terms and conditions. You may not impose any further restrictions on the recipients' exercise of the rights granted herein. You are not responsible for enforcing compliance by third parties with this License.
- 11. If, as a consequence of a court judgment or allegation of patent infringement or for any other reason (not limited to patent issues), conditions are imposed on you (whether by court order, agreement or otherwise) that contradict the conditions of this License, they do not excuse you from the conditions of this License. If you cannot distribute so as to satisfy simultaneously your obligations under this License and any other pertinent obligations, then as a consequence you may not distribute the Library at all. For example, if a patent license would not permit royalty-free redistribution of the Library by all those who receive copies directly or indirectly through you, then the only way you could satisfy both it and this License would be to refrain entirely from distribution of the Library.

If any portion of this section is held invalid or unenforceable under any particular circumstance, the balance of the section is intended to apply, and the section as a whole is intended to apply in other circumstances.

It is not the purpose of this section to induce you to infringe any patents or other property right claims or to contest validity of any such claims; this section has the sole purpose of protecting the integrity of the free software distribution system which is implemented by public license practices. Many people have made generous contributions to the wide range of

software distributed through that system in reliance on consistent application of that system; it is up to the author/donor to decide if he or she is willing to distribute software through any other system and a licensee cannot impose that choice.

This section is intended to make thoroughly clear what is believed to be a consequence of the rest of this License.

12. If the distribution and/or use of the Library is restricted in certain countries either by patents or by copyrighted interfaces, the original copyright holder who places the Library under this License may add an explicit geographical distribution limitation excluding those countries, so that distribution is permitted only in or among countries not thus excluded. In such case, this License incorporates the limitation as if written in the body of this License.
13. The Free Software Foundation may publish revised and/or new versions of the Lesser General Public License from time to time. Such new versions will be similar in spirit to the present version, but may differ in detail to address new problems or concerns.

Each version is given a distinguishing version number. If the Library specifies a version number of this License which applies to it and "any later version", you have the option of following the terms and conditions either of that version or of any later version published by the Free Software Foundation. If the Library does not specify a license version number, you may choose any version ever published by the Free Software Foundation.
14. If you wish to incorporate parts of the Library into other free programs whose distribution conditions are incompatible with these, write to the author to ask for permission. For software which is copyrighted by the Free Software Foundation, write to the Free Software Foundation; we sometimes make exceptions for this. Our decision will be guided by the two goals of preserving the free status of all derivatives of our free software and of promoting the sharing and reuse of software generally.

NO WARRANTY

15. BECAUSE THE LIBRARY IS LICENSED FREE OF CHARGE, THERE IS NO WARRANTY FOR THE LIBRARY, TO THE EXTENT PERMITTED BY APPLICABLE LAW. EXCEPT WHEN OTHERWISE STATED IN WRITING THE COPYRIGHT HOLDERS AND/OR OTHER PARTIES PROVIDE THE LIBRARY "AS IS" WITHOUT WARRANTY OF ANY KIND, EITHER EXPRESSED OR IMPLIED, INCLUDING, BUT NOT LIMITED TO, THE IMPLIED WARRANTIES OF MERCHANTABILITY AND FITNESS FOR A PARTICULAR PURPOSE. THE ENTIRE RISK AS TO THE QUALITY AND PERFORMANCE OF THE LIBRARY IS WITH YOU. SHOULD THE LIBRARY PROVE DEFECTIVE, YOU ASSUME THE COST OF ALL NECESSARY SERVICING, REPAIR OR CORRECTION.
16. IN NO EVENT UNLESS REQUIRED BY APPLICABLE LAW OR AGREED TO IN WRITING WILL ANY COPYRIGHT HOLDER, OR ANY OTHER PARTY WHO MAY MODIFY AND/OR REDISTRIBUTE THE LIBRARY AS PERMITTED ABOVE, BE LIABLE TO YOU FOR DAMAGES, INCLUDING ANY GENERAL, SPECIAL, INCIDENTAL OR CONSEQUENTIAL DAMAGES ARISING OUT OF THE USE OR INABILITY TO USE THE LIBRARY (INCLUDING BUT NOT LIMITED TO LOSS OF DATA OR DATA BEING RENDERED INACCURATE OR LOSSES SUSTAINED BY YOU OR THIRD PARTIES OR A FAILURE OF THE LIBRARY TO OPERATE WITH ANY OTHER SOFTWARE), EVEN IF SUCH HOLDER OR OTHER PARTY HAS BEEN ADVISED OF THE POSSIBILITY OF SUCH DAMAGES.

END OF TERMS AND CONDITIONS

END OF SCHEDULE 3

Schedule 4

If this Linksys product contains open source software licensed under the OpenSSL license:

This product includes software developed by the OpenSSL Project for use in the OpenSSL Toolkit. (<http://www.openssl.org/>).

This product includes cryptographic software written by Eric Young (eay@cryptsoft.com).

This product includes software written by Tim Hudson (tjh@cryptsoft.com).

In addition, if this Linksys product contains open source software licensed under the OpenSSL license then the license terms below in this Schedule 3 will apply to that open source software. The license terms below in this Schedule 3 are from the public web site at <http://www.openssl.org/source/license.html>.

The OpenSSL toolkit stays under a dual license, i.e. both the conditions of the OpenSSL License and the original SSLeay license apply to the toolkit. See below for the actual license texts. Actually both licenses are BSD-style Open Source licenses. In case of any license issues related to OpenSSL please contact openssl-core@openssl.org.

OpenSSL License

Copyright © 1998-2007 The OpenSSL Project. All rights reserved.

Redistribution and use in source and binary forms, with or without modification, are permitted provided that the following conditions are met:

1. Redistributions of source code must retain the above copyright notice, this list of conditions and the following disclaimer.
2. Redistributions in binary form must reproduce the above copyright notice, this list of conditions and the following disclaimer in the documentation and/or other materials provided with the distribution.
3. All advertising materials mentioning features or use of this software must display the following acknowledgment: "This product includes software developed by the OpenSSL Project for use in the OpenSSL Toolkit. (<http://www.openssl.org/>)"
4. The names "OpenSSL Toolkit" and "OpenSSL Project" must not be used to endorse or promote products derived from this software without prior written permission. For written permission, please contact openssl-core@openssl.org.
5. Products derived from this software may not be called "OpenSSL" nor may "OpenSSL" appear in their names without prior written permission of the OpenSSL Project.
6. Redistributions of any form whatsoever must retain the following acknowledgment: "This product includes software developed by the OpenSSL Project for use in the OpenSSL Toolkit (<http://www.openssl.org/>)"

THIS SOFTWARE IS PROVIDED BY THE OpenSSL PROJECT "AS IS" AND ANY EXPRESSED OR IMPLIED WARRANTIES, INCLUDING, BUT NOT LIMITED TO, THE IMPLIED WARRANTIES OF MERCHANTABILITY AND FITNESS FOR A PARTICULAR PURPOSE ARE DISCLAIMED. IN NO EVENT SHALL THE OpenSSL PROJECT OR ITS CONTRIBUTORS BE LIABLE FOR ANY DIRECT, INDIRECT, INCIDENTAL, SPECIAL, EXEMPLARY, OR CONSEQUENTIAL DAMAGES (INCLUDING, BUT NOT LIMITED TO, PROCUREMENT OF SUBSTITUTE GOODS OR SERVICES; LOSS OF USE, DATA, OR PROFITS; OR BUSINESS INTERRUPTION) HOWEVER CAUSED AND ON ANY THEORY OF LIABILITY, WHETHER IN CONTRACT, STRICT LIABILITY, OR TORT (INCLUDING NEGLIGENCE OR OTHERWISE) ARISING IN ANY WAY OUT OF THE USE OF THIS SOFTWARE, EVEN IF ADVISED OF THE POSSIBILITY OF SUCH DAMAGE.

This product includes cryptographic software written by Eric Young (ey@cryptsoft.com). This product includes software written by Tim Hudson (tjh@cryptsoft.com).

Original SSLeay License

Copyright © 1995-1998 Eric Young (ey@cryptsoft.com) All rights reserved.

This package is an SSL implementation written by Eric Young (ey@cryptsoft.com).

The implementation was written so as to conform with Netscape's SSL.

This library is free for commercial and non-commercial use as long as the following conditions are adhered to. The following conditions apply to all code found in this distribution, be it the RC4, RSA, lhash, DES, etc., code; not just the SSL code. The SSL documentation included with this distribution is covered by the same copyright terms except that the holder is Tim Hudson (tjh@cryptsoft.com).

Copyright remains Eric Young's, and as such any Copyright notices in the code are not to be removed.

If this package is used in a product, Eric Young should be given attribution as the author of the parts of the library used. This can be in the form of a textual message at program startup or in documentation (online or textual) provided with the package.

Redistribution and use in source and binary forms, with or without modification, are permitted provided that the following conditions are met:

1. Redistributions of source code must retain the copyright notice, this list of conditions and the following disclaimer.
2. Redistributions in binary form must reproduce the above copyright notice, this list of conditions and the following disclaimer in the documentation and/or other materials provided with the distribution.
3. All advertising materials mentioning features or use of this software must display the following acknowledgement:

"This product includes cryptographic software written by Eric Young (ey@cryptsoft.com)"

The word 'cryptographic' can be left out if the routines from the library being used are not cryptographic related.

4. If you include any Windows specific code (or a derivative thereof) from the apps directory (application code) you must include an acknowledgement: "This product includes software written by Tim Hudson (tjh@cryptsoft.com)"

THIS SOFTWARE IS PROVIDED BY ERIC YOUNG "AS IS" AND ANY EXPRESS OR IMPLIED WARRANTIES, INCLUDING, BUT NOT LIMITED TO, THE IMPLIED WARRANTIES OF MERCHANTABILITY AND FITNESS FOR A PARTICULAR PURPOSE ARE DISCLAIMED. IN NO EVENT SHALL THE AUTHOR OR CONTRIBUTORS BE LIABLE FOR ANY

DIRECT, INDIRECT, INCIDENTAL, SPECIAL, EXEMPLARY, OR CONSEQUENTIAL DAMAGES (INCLUDING, BUT NOT LIMITED TO, PROCUREMENT OF SUBSTITUTE GOODS OR SERVICES; LOSS OF USE, DATA, OR PROFITS; OR BUSINESS INTERRUPTION) HOWEVER CAUSED AND ON ANY THEORY OF LIABILITY, WHETHER IN CONTRACT, STRICT LIABILITY, OR TORT (INCLUDING NEGLIGENCE OR OTHERWISE) ARISING IN ANY WAY OUT OF THE USE OF THIS SOFTWARE, EVEN IF ADVISED OF THE POSSIBILITY OF SUCH DAMAGE.

The license and distribution terms for any publicly available version or derivative of this code cannot be changed. i.e. this code cannot simply be copied and put under another distribution license [including the GNU Public License.]

END OF SCHEDULE 4