

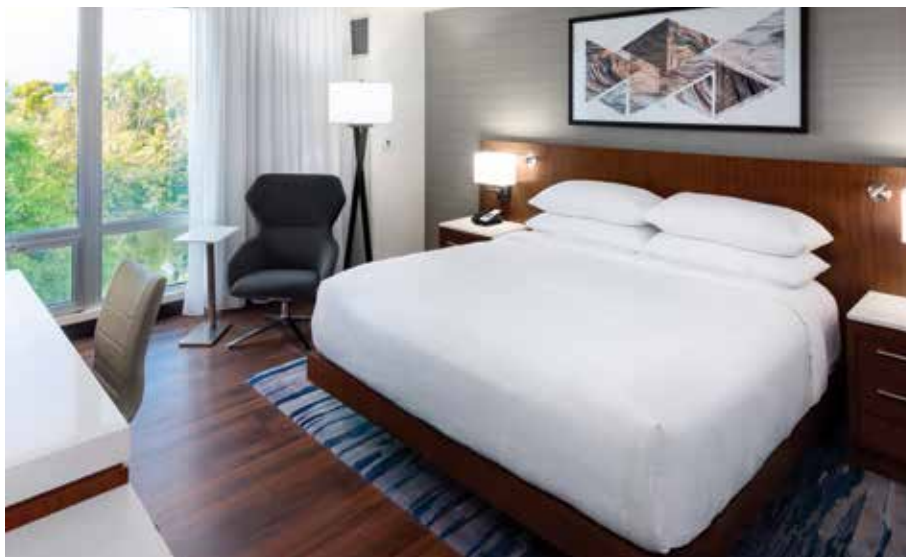
SOUTH SIOUX CITY *Nebraska*

2020 VISITOR & RELOCATION GUIDE

Dakota County | Tri-State Siouland Region



866-494-1307
southsiouxchamber.org



ROOMS THAT REVOLVE AROUND YOU

FOR RESERVATIONS CALL 402.494.4000 OR
VISIT MARRIOTT.COM/SUXMC

Discover a room that revolves around you at the South Sioux City Marriott Riverfront. Enjoy true comfort mixed with dynamic, thoughtful design that offers the perfect blend of style and substance.

South Sioux City Marriott Riverfront
South Sioux City, NE USA 68776
402.494.4000
Marriott.com/SUXMC



MARRIOTT HOTELS



@MARRIOTT



Welcome!



Mayor Rod Koch

1615 1st Avenue
South Sioux City
402-494-7500

As Mayor of the South Sioux City, I am pleased to welcome you to our outstanding community. It is great to showcase our successes and look forward to your enjoyable stay in our city. While you are here I encourage you to see some of the wonderful strides our community has recently undertaken including:

- Flatwater Crossing, a 200-acre primarily housing project with new streets and utilities including LED street lighting. A project that was developed cooperatively with Ho Chunk Development, Dakota County, and the City of South Sioux City.
- The new Veterans Center provides a great way to thank our service women and men. It is complete with a permanent Vietnam Memorial Wall and a statue to memorialize resident John Douangara and his military dog who both passed away in Afghanistan when their helicopter went down.
- A novel community orchard is now producing fruit and nuts for our citizens and has many local enthusiasts and Master Gardeners helping maintain this facility. Bees also are producing a great tasting South Sioux City honey.
- Another new housing project will provide 350 new residential units, exceeding \$35,000,000 dollars while providing enhanced housing opportunities for our developing community which with start construction this spring.
- Further to the south, the City will be adding the first community battery storage in the Midwest to capitalize on our solar panels, a joint project with NextEra and the Nebraska Environmental Trust.
- Also to the south is a new cooling

facility for Empirical which will hold 30,000,000 million pounds of meat. In addition, they are expanding with a \$3,000,000 project this year.

- Also located to the south is Ingredion, a yellow pea processing industry making nutrition bars and other food commodities. Their facility construction project of \$86,000,000 will be completed this winter.
- Along Highway 77 is a new State of Nebraska building just opened in 2019 to hold the Department of Health and Human Services.
- Two new insurance projects were completed last year with the expansion of Great West Casualty and the Joe Morten Insurance Companies, both providing new opportunities for white collar workers.

Quality of Life is important as the City supports multiple projects:

- Expanding the City's 14-miles of class one bike ways with new trails by our schools;
- Restoring Scenic Park and campground as a result of flooding
- Working with the Siouxland Tennis Association to build a new indoor multi-court tennis facility
- Working with the Papio Missouri Natural Resource District in building a new shelter house, new soccer practice area.

As you can see, we are proud of our community. I wish you the best today and I wish you a bright future.



This booklet is a project of the South Sioux City CVB
4401 Dakota Avenue,
South Sioux City, NE 68776
Tel: 402-494-1307
visitsouthsiouxcity.com

Photos courtesy: SSC CVB, SSC Community Schools
and the Dakota County Star Newspaper

Front Cover:

Lance Swanson, SSC Community Schools

Fast Facts About South Sioux City...

- A key tourist destination on the Lewis and Clark Trail.
- Cited by Thomas Friedman in “The World Is Flat” as the home of a global leader in construction, thanks to Lite-Form Technologies.
- The home of noteworthy pancakes and award-winning sour cream raisin pie from the Crystal Café according to Jane and Michael Stern in their book “Road Food”.
- South Sioux City was incorporated in 1887.
- According to the United States Census Bureau, the city has a total area of 5.96 square miles (15.44 km²), of which 5.71 square miles (14.79 km²) is land and 0.25 square miles (0.65 km²) is water.
- Elevation is 1,102 ft. (336 m.).
- SSC Haunted House - There are said to be 7 ghosts here. The place was a streetcar stop in the early 1900s, and it is now a private residence.

Distance from other cities

| | |
|-----------------------|-----------|
| Chicago, IL | 532 miles |
| Denver, CO | 634 miles |
| Des Moines, IL..... | 199 miles |
| Kansas City, MO..... | 277 miles |
| Lincoln, NE | 152 miles |
| Minneapolis, MN | 275 miles |
| Omaha, NE | 97 miles |
| Sioux Falls, SD | 87 miles |
| St. Louis, MO | 529 miles |
| Wichita, KS..... | 400 miles |

Driving to South Sioux City

South Sioux City is located in the northeast corner of the State of Nebraska. Interstate 29 is parallel to South Sioux City, Neb. and Sioux City, Iowa. South Sioux City is on the west side of the Interstate and Sioux City, Iowa is on the east side of the Interstate.

TABLE OF CONTENTS

| | |
|---------------|-----|
| Welcome | 3-4 |
|---------------|-----|

Visitors Guide

| | |
|-----------------------------|-------|
| Phone Numbers | 5 |
| Accommodations | 6 |
| Calendar of Events | 7-9 |
| Restaurants | 10-11 |
| Historical Attractions..... | 12-18 |
| Recreation | 19-25 |
| Entertainment | 26-32 |
| Area Shopping..... | 33 |

Relocation Guide

| | |
|------------------------------------|-------|
| About South Sioux City | 34-35 |
| Dakota County Profile..... | 36 |
| Economic Development | 38 |
| Get Connected | 39 |
| Real Estate & Apartment Info | 40 |
| Community Organizations..... | 42-43 |
| Church Directory | 44 |
| Area Schools..... | 45-50 |
| High School Sports | 51 |
| Healthcare..... | 52-55 |
| Colleges & Universities | 56-58 |

Phone Numbers

TOURIST INFORMATION CENTER

South Sioux City

Convention & Visitors Bureau

Toll Free 866-494-1307

Local 402-494-1626

Siouxland Convention

& Visitors Bureau

Toll Free 800-593-2228

Local 712-279-4800

Nebraska State Office of Tourism

Toll Free 800-228-4307

Local 402-595-3990

HELPFUL PHONE NUMBERS

AAA (24 hour Road Service)

..... 800-222-4357

Better Business Bureau 402-391-7612

City of South Sioux City

Parks & Recreation 402-494-7535

Nebraska Game & Parks 402-471-0641

Poison Control 1-800-222-1222

Road/Weather Conditions 511

South Sioux City

Area Chamber 402-494-1626

South Sioux City

Government 402-494-7500

South Sioux City Library 402-494-7545

United Way for help 211

HOSPITALS

MercyOne 712-279-2010

UnityPoint Health -

St. Luke's 712-279-3500

COLLEGES & UNIVERSITIES

College Center NE Community College/

Wayne State College 402-241-6400

Briar Cliff University 712-279-5321

Morningside College 712-274-5000

Nebraska Indian

Community College 402-494-2311

St. Luke's College -

UnityPoint Health 712-279-3149

Western Iowa Tech

Community College 712-274-6400

TRANSPORTATION

Airports

Sioux Gateway Airport

(Sioux City) 712-279-6165

Sioux Falls Regional Airport .. 605-336-0762

Omaha Airport Authority

(Eppley Airfield) 402-661-8017

Bus Transportation/Charter

Sioux City Transit

Route Information 712-279-6404

Car Rental Agencies

Great Western Car &

Van Rental 712-255-5304

Taxi Services

AA Action Taxi 712-252-4777

EZ Cabs, Inc. 712-276-5440

Lucky 5's Cab 712-258-5555

Siouxland Taxi &

Limousine Service 712-277-0000

Taxi Xpress 712-444-4444

Accommodations

Cottonwood Inn & Conference Center

Comfortable accommodations with affordable rates, free wireless and free continental breakfast. 60 rooms, 1 suite, handicapped room. Pets allowed (charges and restrictions apply).

Conference Center featuring the 2,937-squarefoot Cottonwood Conference Center or smaller divided Nebraska, Dakota or Iowa rooms. All perfect for banquets, weddings, quinceañeras, fundraisers, conventions or meetings.

4402 Dakota Avenue
South Sioux City, NE
402-494-4114 or 888-315-2378
cottonwoodinnandconferencecenter.com

South Sioux City Marriott Riverfront

Beautiful, newly renovated, hotel located on the Missouri River with 182 rooms, including 13 suites, outdoor pool and whirlpool, state of the art fitness center, Kahill's Chophouse, The Bean Coffee Shop, and complimentary shuttle.

The Marriott Center has 30,000 square feet of exhibit space, perfect for both regional and national events. The 11,000 square-foot Grand Ballroom is perfect for weddings, meetings and conventions and fundraising events while the 2,000 square foot Terrace Ballroom is ideal for smaller, intimate events.

385 E. 4th St., South Sioux City, NE
402-494-4000 or 800-798-7980
www.marriottriverfrontssc.com

Budget Host Inn

50 rooms.
1201 First Avenue
South Sioux City, NE
402-494-2021 | budgethost.com

Knights Inn

79 rooms, 3 suites with hot tub, outdoor pool, wet bar, refrigerator, solar heated pool, free continental breakfast, meeting room.

2829 Dakota Avenue
South Sioux City, NE
402-494-8874 | knightsinn.com

Midtown Motel

7 rooms available.
103 E. 18th St., South Sioux City, NE
402-494-9783

Regency Inn

40 rooms, free continental breakfast.
400 Dakota Avenue
South Sioux City, NE
402-494-3046 or 800-578-7878



Calendar of Events

Find up-to-date information on all things South Sioux City by liking us on Facebook! The following events are subject to change, please check with the host of the event before attending.

JANUARY

JAN. 21

Midwest Dart Tournament; Sioux City Convention Center

JAN. 25

All Shook Up: Tribute to the King Contest; Hard Rock Hotel & Casino Sioux City

JAN. 25-26

The Classic Rock 99.5 Outdoor Show; Tyson Events Center

JAN. 28

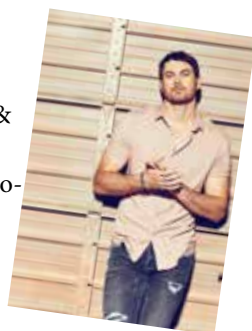
Blue Man Group; The Sioux City Orpheum

JAN. 30

Chris Janson; The Sioux City Orpheum

JAN. 31

Matt Stell w/
Chris Bandi &
Ray Fulcher;
Hard Rock Hotel & Casino
Sioux City



JAN. 31-

FEB. 2

Frozen, Jr.; New Stage Players



COTTONWOOD INN AND CONFERENCE CENTER

The perfect place for any event...weddings, conventions, business meetings, graduations, fundraisers, quinceañeras, exhibitions

Adjoining hotel with free breakfast business center, cable, wi-fi, fitness center and spacious parking



4402 Dakota Avenue, South Sioux City, NE 68776 | Tel: 402-494-4114

FEBRUARY

FEB. 1

Richard Marx: An Acoustic Evening of Love Songs; Hard Rock Hotel & Casino Sioux City

FEB. 7

Empty Bowls Hunger Awareness Fundraiser; Sioux City Convention Center

FEB. 7

An American in Paris; The Sioux City Orpheum

FEB. 8

Jay Owenhouse: Dare to Believe; The Sioux City Orpheum

FEB. 14

Hairball; Tyson Events Center

FEB. 15

Steins and Vines; Sioux City Convention Center

FEB. 15

Steve-O: The Bucket List Tour; Hard Rock Hotel & Casino Sioux City



FEB. 15

Sioux City Symphony: The Music of Queen; The Sioux City Orpheum

FEB. 20

Women Lead Change 2020 Siouxland Conference, Sioux City Convention Center

FEB. 21

KISS: End of the Road World Tour, Tyson Events Center



FEB. 22

World Championship ICE Racing; Tyson Events Center

FEB. 27

63rd Annual Siouxland Home Show; Sioux City Convention Center

FEB. 29-MARCH 1

PAW Patrol Live! "The Great Pirate Adventure"; Tyson Events Center

MARCH

MARCH 11-17

NAIA Women's DII Basketball Championship; Tyson Events Center

MARCH 14

Sioux City Symphony: Beethoven Symphony No. 7; The Sioux City Orpheum

MARCH 14-15

Sioux City Cosmopolitan Club Train Show; SSC Marriott Riverfront

MARCH 15

Dancing with the Stars: Live!, The Sioux City Orpheum

MARCH 21-22

Annual Crafts and Drams Fest, Sioux City Convention Center

MARCH 25

Harlem Globetrotters: Pushing the Limits World Tour; Tyson Events Center

MARCH 26

Women's Night Out; Sioux City Convention Center

MARCH 27-28

Swanky Chic Vendor Show; SSC Marriott Riverfront

MARCH 28

Bert Kreischer: The Berty Boy World Tour; The Sioux City Orpheum

APRIL

APRIL 1

Siouxland Garden Show; SSC Marriott Riverfront

APRIL 1-5

Abu Bekr Shrine Circus; Tyson Events Center

APRIL 3

David Allen Coe; Hard Rock Hotel & Casino Sioux City

APRIL 17-20, 23-26

The Nerd; New Stage Players

APRIL 24

Everclear; Hard Rock Hotel & Casino Sioux City

APRIL 25

Sioux City Symphony: John Osborn: A Legend Returns Home; The Sioux City Orpheum

APRIL 25 & 27

The Porn Epidemic Conference; Sioux City Convention Center

APRIL 26

Earth Day Celebration, SSC Marriott Riverfront

APRIL 26

Beautiful: The Carole King Story, The Sioux City Orpheum

MAY**MAY 8-9**

Monster X Tour, Tyson Events Center

JUNE**JUNE 20-21**

Penguin Project Presents – Roald Dahl's Willy Wonka, Jr., New Stage Players

JULY**JULY 17-18**

Scene of the Crash Car Show; Dakota-Thurston County Fairgrounds

JULY 24-27, JULY 30-AUG. 2

Big Fish; New Stage Players

JULY 29-AUG. 2

Dakota-Thurston County Fair

AUGUST**AUG. 12**

The Doobie Brothers: 50th Anniversary Tour; Tyson Events Center

OCTOBER**OCT. 26-27**

Swanky Chic Vendor Show; SSC Marriott Riverfront

OCT. 29-Nov. 2, Nov. 5-8

The Addams Family; New Stage Players



**Tractor Pull • Dueling Pianos • Kids Day
Bull Riding • Rodeo • Vendors • Junk-a-Palooza
...and so much more!**



July 29th - Aug. 2nd

Atokad Park, Fairgrounds,
1547 Stable Drive, SSC, NE 68776



Something for everyone!

Restaurants



Bar / Pub / Grill / Steakhouse

El Ranchito Restaurant & Bar

2101 Cornhusker Dr.,
South Sioux City, NE
402-494-2988

Kahill's Steak-Fish Chophouse

385 E. Fourth St.
South Sioux City, NE
402-494-5025

The Don'S Sports Bar and Grill

801 West 13th St.,
South Sioux City, NE
402-404-2990

Huddle Lounge

110 E 8th St.,
South Sioux City, NE
(402) 494-5903

Los Amigos Cabana

1313 Dakota Avenue
South Sioux City, NE
402-203-1556

Cafe/Deli/Bakery

Crystal Cafe

4601 Dakota Avenue
South Sioux City, NE
402-494-5471

Hy-Vee Inc.

2501 Cornhusker
Plaza
South Sioux City, NE
402-494-4675

Subway

2720 Dakota Avenue
South Sioux City, NE
402-494-8834

Townhouse Cafe

Mid-Town Motel
103 E 18th St.
South Sioux City, NE
402-494-9783

Dakota Perk

3900 Dakota Avenue,
Ste. 1
South Sioux City, NE
402-404-8080

San Miguel Bakery

1813 Dakota Avenue
South Sioux City, NE
402-404-8363

The Koffie

Knechtion
419 Golf Rd.
South Sioux City, NE
402-635-7374

Evelyn's Bakery

2306 Dakota Ave.
South Sioux City, NE
402-412-2599

Chinese

Chinese Chef

2800 Dakota Ave.,
South Sioux City, NE
402-494-8940

Hy-Vee Inc.

2501 Cornhusker Plaza
South Sioux City, NE
402-494-4675

Suarez Bakery

708 14th St.
South Sioux City, NE
712-266-6554

Fast Food

Arby's

3815 Dakota Avenue
South Sioux City, NE
402-494-4766

Burger King

2000 Cornhusker Dr.
South Sioux City, NE
402-494-3447

Dairy Queen

1201 Dakota Avenue
South Sioux City, NE
402-494-1122

Little Caesars Pizza

1921 Dakota Avenue
South Sioux City, NE
402-494-3161

FAST FOOD CONTINUED...

McDonald's
600 Dakota Avenue
South Sioux City, NE
402-494-6928

Papa Murphy's
1901 Cornhusker Dr.,
South Sioux City, NE
402-494-9983

Rosie's Pizza
2126 Dakota Avenue
South Sioux City, NE
402-494-2999

Wendy's Restaurant
1702 Cornhusker Dr.
South Sioux City, NE
402-412-2476

Pizza Hut
1601 Dakota Avenue
South Sioux City, NE
402-494-2423

KFC
1902 Dakota Ave.
South Sioux City, NE
402-494-2276

Taco Bell
810 Dakota Avenue
South Sioux City, NE
402-494-4944

Taco John's
2701 Dakota Ave,
South Sioux City, NE
402-494-4002

Mexican

Deanda Tortilla Inc
104 W 39th St.
South Sioux City, NE
402-494-6863

La Isla Restaurant Inc
611 West 29th St.
South Sioux City, NE
402-404-8022

La Michoacana Inc.
1723 Dakota Avenue
South Sioux City, NE
402-494-1900

Mi Rancherita
1512 Dakota Avenue
Ste. C
South Sioux City, NE
402-404-2960

La Guadalupana
2522 Dakota Avenue
South Sioux City, NE
402-494-2657

La Juanita Restaurant
116 E. 21st St.
South Sioux City, NE
402-494-4006

La Salsita
1606 Dakota Avenue
South Sioux City, NE
402-494-7910

El Ranchito
2101 Cornhusker
Drive
South Sioux City, NE
402-494-2988

Roble's
1404 Dakota Ave.
South Sioux City, NE
712-277-4853

Mi Familia Restaurant
618 Dakota Avenue
South Sioux City, NE
402-404-8191



Northeast Nebraska Insurance Agency

Independent agents for Auto-Owners, Battle Creek Mutual, BHHC/Cornhusker Casualty, Columbia, Continental Western, Donegal Ins. Group, EMC, Farmers Mutual of Nebraska, Nationwide, North Star Mutual, Progressive, Dairyland/Viking

- Homes • Auto • SR22 • Life • Health • Casualty
- Business • Farm • Crop/Hail Insurance • Bonds

Dave Heck | Jared Langel
Andria Sivill | Heather Sigaty

2021 Dakota Avenue, South Sioux City, NE
402-494-1356 | northeastnebraskainsurance.com

Historical Attractions



O'Connor House

Scenic Byways

South Sioux City is the portal to two Nebraska Scenic Byways: the Lewis and Clark Scenic Byway and the Outlaw Trail.

In 1804, Meriwether Lewis and William Clark embarked on a journey that would become one of America's most fabled expeditions. Part of that adventure would take them up the Missouri River and along the eastern and northern border of present day Dakota County.

Today, you can travel that same pathway by taking the Lewis and Clark and Outlaw Trail Scenic Byways. They are pathways on which history and beauty happily collide to deliver an inspiring journey through time. The routes will take you through wooded bluffs that overlook the majestic Missouri River as it snakes its way through fertile farmland. Along the way, catch a glimpse of waterfowl and bison as they thrive on the area's natural resources. Share the path where trappers, traders and American Indians once lived and traveled. Discover a large bison herd roaming the grassy plains of the Winnebago Reservation.

Travel west on Highway 12 and discover a picturesque journey through breathtaking and diverse Nebraska landscapes. Known as "Nebraska's Everglades," you'll marvel at the unusual biological diversity. Great vistas encompass clear blue sky and native stands of oak trees dot the skyline. Diverse geological features, such as vast, flat bottomlands and wetlands, give way to bluffs and the state's largest waterfall. View cottonwood forests, pine and cedar forests, open prairie, lush cropland and abundant wildlife.

Along the way, you'll find literally hundreds of entertaining stops of historical significance,

with a wide variety of recreational, educational and just plain fun things to see and do.

Lewis and Clark Scenic Byway

The View - Wooded bluffs, open bottomlands, bountiful cropland and historic waterways.

The Adventure - Western history, American Indian culture, steamboat artifacts, and the first military post west of the Missouri River. From just north of Omaha to South Sioux City along U.S. Highway 75.

lewisandclarkscenicbyway.com

Outlaw Trail Scenic Byway

The View - Forested bluffs, winding rivers, Sandhills, grasslands, wetlands, high prairie lakes, waterfalls, and a national wildlife refuge. The Adventure - Famous footsteps, worldclass canoeing, the state's tallest waterfall, wildlife viewing, state recreation areas, and fishing. From Willis, just west of South Sioux City to Valentine on Nebraska Highway 12.

nebraskaoutlawtrail.org

Loess Hills Scenic Byway

The Loess Hills Scenic Byway traverses internationally distinctive landforms as it follows the Missouri River Valley in western Iowa, taking you through some of the most interesting country in the Midwest. Thousands of years ago, active glaciers covered much of the northern United States. When these glaciers melted, they left fine silt particles that formed a yellow soil called loess (pronounced "luss"). Strong windstorms deposited layers of loess several hundred feet thick on both sides of the Missouri River Valley, molding the soft soil into sheer ridges and rippled hills. Only two places



JOE MORTEN & SON, INC.

Driven To Serve®



Protection You Need With Service You Expect

With Joe Morten & Son, Inc. teamwork and service start, not end, with the issuance of your insurance policy. Serving over 40 states with seven office locations, Joe Morten & Son has a national presence. Advantages you will receive when you insure with Great West Casualty Company through Joe Morten & Son include:

- Custom-tailored insurance policies
- Proactive safety tools
- Quick and responsive claims service
- Knowledgeable, service-minded agency teams that are relationship driven
- And many more

1309 West 29th Street | South Sioux City, NE 68776 | 402.494.4251 | joemorten.com



GREAT WEST CASUALTY COMPANY

The Difference is Service®

Helping to Grow Siouxland's Economy Since 1956.



1100 W 29th Street • South Sioux City, NE 68776
402-494-2411 • www.gwccnet.com



OLD REPUBLIC INSURANCE GROUP

in the world have such extensive loess layers: the Yellow River Valley of China and the Loess Hills of western Iowa.

If you'd like to see the Loess Hills the way the Pioneers and native people might have seen them, visit Five Ridge Prairie, where several trails head deep into undeveloped country.

Museums

Combs School

Built in 1857 and closed in 1964, the frame schoolhouse is part of Nebraska's pioneer heritage - the oldest school building in Dakota County and one of the oldest in Nebraska.

Originally erected in the spring of 1857 at Omadi, four miles south of Dakota City, the school shared the townsite's peril when the Missouri River began to undermine the area. Since the school faced destruction, it was moved to Thomas Smith's claim, about two miles south of Homer. Here, a new school district was organized.

When construction on the Burlington Railroad from Sioux City to Lincoln began, the school was found to be on railroad property. The building was then shifted to the old Combs Mill, then onto its present museum location at Blyburg Road. School redistricting eliminated the need for the old Combs School, and its doors closed for the last time May 22, 1964. It was part of the Homer School District at the time it closed.

The Board of Education of the newly-formed district donated the building to the Dakota County Historical Society, who has set it aside as a monument to the pioneer fathers' belief that, "MEN ARE ENNOBLED BY UNDERSTANDING."

**Dakota County Historical Society,
Historical Landmark Council
U.S. 75-77, South of Homer, NE**

Emmanuel Lutheran Church

Emmanuel Lutheran Church is the oldest wood frame church in Nebraska still in existence. Built in 1860, this is the first Lutheran church in the Nebraska Territory. The Vespers Service is held annually in August.

**1500 Hickory St., Dakota City, NE
402-698-2288**

LaunchPAD Children's Museum

LaunchPAD Children's Museum is a hands-on, interactive play and discovery center. Designed for children ages 6 months to 10 years,

Hike past fields of wildflowers and through burr oak forests to the top of the 200-foot ridge, where you can see miles of greengold prairie stretch out before you. You can tackle the slopes on your mountain bike for a faster trip, or if you want to spend more time on the prairie, Preparation Canyon and other state parks feature several hike-in campsites.



exhibits reflect local themes such as water, wind, and construction as well as a "farm to table" theme running from the agricultural exhibits to the market and on to the café. Exhibits are open-ended to promote free exploration and creativity. A child fully engrossed in play is absorbed in a joyful engagement and experimentation with the world. LaunchPAD is a great spot for birthday parties or even consider leasing the entire museum for a family, business or church event!

**launchpadmuseum.com
712-224-2542
info@launchpadmuseum.com**

Missouri National Recreational River Resource and Education Center

"Where People and Nature Meet" describes the beauty and solitude of this conference center. Along with meeting rooms, this facility offers a terrific visitor center and hands-on interpretive center focusing on the natural and cultural history of the Missouri River.

**2 miles north of Ponca at Ponca State Park
Ponca, NE | 402-755-2284**

Museum of Machinery

Located 1 mile east of Homer, the 60-foot by 150-foot building houses an outstanding collection of early machinery. The collection is open by appointment. Contact Dennis Reinert at 402-987-3516.

1 mile east of Hwy. 77 on gravel road. Homer, NE

O'Connor House

The O'Connor House is a 14-room mansion located 1 mile east of Homer. Constructed over a 10-year period from 1865- 1875, it was literally built on a rock and was home to Captain Cornelius O'Connor, his wife and 10 children. Stone slabs were shaved and fitted together to form the foundation and then topped with brick. Listed on the National Register of Historic Places, it is run by the Dakota County Historical Society. The first two weekends in November, the society hosts an open house and area businesses decorate the house for Christmas.

1 mile east of Hwy. 77 on Blyburg Road Homer, NE 402-698-2288

Palmer's Olde Tyme Candy Shoppe

Candy museum and store featuring memorabilia and history of the family-owned business best known for its Twin Bing candy bar.

405 Wesley Parkway Sioux City, IA 712-258-7790 | palmercandy.com

Sergeant Floyd River Museum & Welcome Center

Board the M.V. Sergeant Floyd and begin a journey into the region's maritime history. Built in 1932 as an inspection boat by the U.S. Army Corp of Engineers, the Sergeant Floyd River Museum & Welcome Center chronicles the Missouri River's development as a major shipping route and the key to Sioux City's success in the early years of its founding. Discover exhibitions of the Lewis & Clark Expedition, the fur trade, Sioux City's evolution as a transportation hub and those rivercraft which still ply the waters of the Missouri River. An official Iowa and Nebraska Center, the center also provides travel planning for the tri-state region. The location provides views of the Missouri, picnic sites and access to the riverfront trail systems. The Galley Gift Shop features Iowa and Nebraska souvenirs.

1000 Larson Park Road on the riverfront Exit 149 from I-29, Hamilton Blvd., Sioux City, IA | 712-279-0198 siouxcitymuseum.org



O'Connor House, Homer NE

Sioux City Lewis & Clark Interpretive Center/Betty Strong Encounter Center

Admission is free to the Sioux City Lewis & Clark Interpretive Center/Betty Strong Encounter Center which commemorates the Corps of Discovery's time in the present-day Sioux City, Iowa, area in August 1804. At the center of the story is the Aug. 20th death of Sgt. Charles Floyd, the only member of the Corps to die during the expedition.

Animatronic Lewis & Clark figures preside over the Aug. 20th burial of Sgt. Floyd on a bluff overlooking the Missouri River. A "seeder" post marks this first of four graves to hold the remains of the young soldier from Kentucky. His final resting place is marked by the Floyd Monument, a 100- foot obelisk dedicated on May 30, 1901.

Other notable events occurred from Aug. 14 to 31, 1804 in the present-day Sioux City area upriver to present-day Yankton, S.D.: a fish camp; the court martial of deserter Pvt. Moses Reed; talks with the Otoe and Missouri Indians; and the election Sgt. Patrick Gass to replace Sgt. Floyd at present-day Elk Point, S.D.

712-224-5242 | siouxcitylcic.com facebook.com/ sclandc - for program schedules.

Sioux City Public Museum

Located in the heart of downtown Sioux City, the Sioux City Public Museum features large, colorful exhibits, interactive displays and much more. Visitors will discover the "Spirit of Sioux City" through a lively 12-minute orientation film in the ornate "corn palace theatre." A variety of hands-on experiences are available, including the award-winning "Innovation I-Wall" and "The Big Dig," which replicates an active fossil dig site. Highlights of the permanent gallery are rare Native American artifacts from the area; Sioux City's first "horseless buggy," a 1901 Oldsmobile;

a 1930 Kari-Keen airplane manufactured in Sioux City and a 1918 Mack fire truck similar to ones used by the Sioux City Fire Department. The two-story Disaster and Recovery Wall features multi-media presentations of three major Sioux City catastrophes: the 1904 Pelletier Department Store fire, the 1953 Floyd River Flood and the 1989 crash of United Airlines Flight 232.

607 4th St., Sioux City, IA
712-279-6174 | siouxcitymuseum.org

The Railroad Museum - Sioux City

This museum is located at the retired historic Milwaukee Railroad roundhouse facility. Come tour this once bustling locomotive and railcar maintenance facility which houses Sioux City's historic Great Northern steam locomotive as well as many other historic pieces of rolling stock and artifacts and a large model railroad exhibit.

3400 Sioux River Rd., Hwy. 12 North, Sioux City, IA | 712-233-6996
milwaukeeairroadshops.org



Trinity Heights

The 33-foot stainless steel statue of Jesus is the centerpiece of the Outdoor Cathedral. The Veterans Memorial: bricks laid in the shape of the cross with a God Bless America rock, lies at the entrance to the Statue of the Sacred Heart of Jesus. The 53 acres offer a beautiful setting for the 30-foot stainless steel statue of Mary, the Trinity gardens and Circle of Life memorial to the Unborn. The St. Joseph Center Museum features a life-size wood carving of the Last Supper. Open 7 days a week. 10 a.m. - 4 p.m. October through March.

2511-33rd St., Sioux City, IA
712-239-8670 | trinityheights.com

Other Historical Attractions

4th Street, Historic District

Historic 4th contains a concentration of late-19th century commercial buildings. Most of the larger buildings are notable for their distinctive Richardsonian Romanesque style of architecture popular to the late 1800s. The area features antique and specialty shops, pubs and restaurants.

4th St., Sioux City, IA
712-279-4800

Blackbird Scenic Overlook

Lewis and Clark and 10 men climbed a hill to the burial site of Blackbird, an Omaha Chief who died four years earlier of smallpox. Today, you can view a modern model of an earth lodge and enjoy the scenic beauty of the Missouri River. Site also contains information about the Omaha Tribe.

U.S. Hwy. 75, Macy, NE
402-837-5391

Dakota City Train Depot

Recently, the City of Dakota City was awarded almost \$130,000 for the renovation of the exterior of the former Chicago and

Northwestern Railroad Depot. Constructed in 1922, this one-story brick depot building is eligible for listing in the National Register of Historic Places. This facility was a key link in the Omaha to Minneapolis rail corridor from 1922 until 1957 when it was abandoned. The rails and ties are still located immediately north of the building. It is located one block from the Dakota City Public School and 125 feet from the end of the Dakota City Trail.

Dakota City, NE



Flight 232 Memorial

On the riverfront, near the Anderson Dance Pavilion. Commemorating the heroic rescue efforts shown by the Siouxland community after the crash of United Flight 232 in 1989, the statue depicts Colonel Dennis Nielson carrying a child to safety.

300 Larsen Park Rd., Sioux City, IA

Lewis and Clark Campsite: Aug. 21, 1804

Lewis and Clark's Expedition went through this area their mood was gloomy after burying their comrade, Sergeant Charles Floyd, who died of a ruptured appendix. He was the expedition's only fatality but they suffered from a variety of illnesses and accidents. On August 22, Captain Lewis became ill. On the return journey in 1806, Lewis was injured in a hunting accident. On this day, the explorers passed the Sioux River. Clark was told about a place high up this river where "a Creek Coms in which passes through cliffs of red rock which the Indians make pipes of, and when the different nations meet at those queries all is peace." This is now known as Pipestone National Monument, located in southwestern Minnesota. The party camped along the Missouri River northeast of here.

Nebraska State Historical Society National Park Service Marker 343 U.S. 20 at milepost 421 on north side, approximately 1 mile west of Jackson, NE, Dakota County

Lewis and Clark Wayside

Located on the bluffs of the Missouri River, about 3 miles from where the expedition had their longest encampment, and about 4 miles from where they caught over 1,300 fish in one day. This outlook commemorates the historic discovery and provides a breathtaking view of the beautiful Missouri River.

14th & Hickory, Dakota City, NE

Sergeant Floyd Monument

This 100-foot-high stone obelisk memorializes Sgt. Charles Floyd who died on the 1804 Lewis & Clark Expedition. Overlooking a breathtaking view of the Missouri River, it was the first historic landmark registered by the U.S. Government in 1960.

On Hwy. 75 near Glenn Avenue Take I-29 exit 143 to Singing Hills Blvd., to Lewis Blvd. go 1 mile. Sioux City, IA

Southern Hills Mall Lewis & Clark Mural

With a prominent location along the famous Lewis & Clark Trail, Southern Hills Mall commissioned a one-of-a-kind, museum-quality Lewis and Clark mural exhibit that stretches



Veteran's Memorial Wall

296 feet above storefronts and tells the story of the entire expedition in 38 scenes. With this historically accurate exhibit, the mall was designated a "National Trail Site" by the National Park Service—the only commercial entity to receive such an honor.

**4400 Sergeant Road, Sioux City, IA
712-274-0109**

St. John's 1856

The abandoned site of "Old St. John's," one of the first towns established in Dakota County. The townsite was settled on June 2, 1856, by the Father Treacy Colony – 60 people, with 18 ox-drawn covered wagons. The site was surveyed and platted June 24, 1856 and the town was named St. John's, in honor of St. John the Baptist. In 1860, Father Treacy went to Washington seeking permission to establish a mission among the Ponca Indians. Meanwhile the Civil War began. Father Treacy became an Army chaplain, and never returned to his beloved colony. In the early 1860s, the Missouri River began to threaten St. John's. The people began moving their buildings to the new town of Jackson. By 1866, all buildings were gone and the townsite was abandoned.

Dakota County Historical Society Historical Landmark Council Marker 34, U.S. 20, Jackson Dakota County, NE

Territorial Church

Near here stands the first Lutheran church building constructed in Nebraska.

It has occupied this site since 1860. The congregation was first served by Reverend

Henry W. Kuhns, a missionary sent by the Allegheny Synod to Nebraska Territory. Kuhns preached his first sermon in the front room of the Bates House (hotel) in November 1850 and formally organized the church on July 22, 1859.

The membership immediately made plans for building, but their effort of moving an abandoned store from the abandoned town of Pacific City was frustrated when the structure was destroyed by a prairie fire while being moved to Dakota City.

This church was designed and built by Augustus T. Haase, a local carpenter and member of the Emmanuel Lutheran congregation, at a cost of \$2,000. For several years the building also served periodically as a territorial courthouse, with religious services being held on Sunday as usual. Samuel Aughey, a leading scientist of the period, was the second pastor to serve the church.

This old church still stands as a monument to the steadfastness of purpose of the early settler and as a symbol of pioneer religious life.

**Dakota County Historical Society Historical Landmark Council Marker 23, U.S. 75-77
Dakota City, NE | Dakota County**

Tonwantonaga

An important Omaha Indian village called Tonwantonaga (Large Village) by the Omaha stood on Omaha Creek in this area. Ruled by the great Chief Blackbird, an estimated 1,100 people lived in this earthlodge town about 1795 and it played an important role in Indian and exploratory history. Many explorers and fur traders visited this spot before 1800. Near it the Spanish built a fort, armed it with heavy guns, and named it Fort Charles honoring Charles IV.

The Lewis and Clark Expedition visited the village August 13, 1804, finding it deserted, as

the Omaha were away on an extended buffalo hunt. The explorers stayed near the site for a week and held a conference with three chiefs of the Oto tribe who had come to make peace with the absent Omaha.

In 1800, disaster had struck the village as smallpox killed an estimated 400 including the famous Chief Blackbird. After Blackbird's death, the village ceased to play so important a role in the struggle for control of the Missouri Valley and the Plains beyond.

**Historical Landmark Council U.S. 77, north of
Homer, NE Dakota County | Sioux City, IA**

War Eagle Monument

War Eagle was said to have been Mdewakanton or Isanti Dakota Indian. A friend to the white people, he died in 1851. A monument was erected on this bluff honoring him, which provides a breathtaking view of the tri-state area.

**Take I-29 Exit 151 and follow War Eagle Dr.,
Sioux City, IA**

Vietnam Veterans Memorial Wall

This is a half-scale replica of the Vietnam Veterans Memorial Wall. The 250-foot granite wall is engraved with the names of more than 58,000 fallen service members from the Vietnam War. It duplicates the original wall design in Washington, D.C., even using the same quarry in India for the granite. The panels were escorted to the park by the American Legion Riders in May 2014.

This memorial brings the healing experience of one of our country's most unique memorials to the Midwest, making it accessible for visitors from around the country who might not otherwise experience its powerful legacy.

**1801 Veterans Drive, South Sioux City, NE
siouxlandfreedompark.org**

| | | |
|--|--|--|
| <p>FM & Insurance Associates</p> <p>402-494-4215 fminsuranceassoc.com</p> <p><small>Insurance products are not deposit accounts, not FDIC insured or insured, not FDIC insured, not insured by any other agency of the federal government or any affiliate of the bank, may lose value.</small></p> | <p>FM & Bank</p> <p>402-494-4215 fmbankne.bank</p> <p>Member FDIC</p> | <p>FM & Wealth Management</p> <p>402-494-4215 matt.lawler.sarep.com</p> <p><small>Investment products are not deposit accounts, not FDIC insured or insured, not FDIC insured, not insured by any other agency of the federal government or any affiliate of the bank, may lose value.</small></p> |
|--|--|--|

Recreation



Arts/Culture



New Stage Players

A unique entertainment organization, - NEW STAGE PLAYERS is the first amateur theatrical troupe to call South Sioux City, Nebraska home. You can be a part of it! Audition. Volunteer.

P. O. Box 1056, SSC, NE
newstageplayers.com

Municipal Band

The Sioux City Municipal Band performs every Sunday at 7:30 pm throughout the months of June and July at the Grandview Park Band Shell. Concerts are FREE!

Grandview Park Bandshell 24th & Grandview, Sioux City, IA | 712-279-6126

Sioux City Art Center

The 45,000 sq. ft. Art Center houses a three-story glass atrium, six-exhibit galleries to house traveling exhibits, and a permanent collection gallery for the Center's 900-piece collection. A hands-on Children's Gallery is enjoyed by kids of all ages. Special tours, receptions and events can be arranged.

225 Nebraska St., Sioux City, IA
712-279-6272 |siouxcityartcenter.org

Artsplash

Artsplash is an amazing two-day annual exhibition for local Siouxland artists put on by the Sioux City Art Center. Complete with entertainment, adult and children's activities and a wide variety of food and much more.
siouxcityartcenter.org

Sioux City Symphony Orchestra

Each year the symphony presents a 7-concert classical and pop series, a 3-concert family series and a wide variety of educational programming throughout the region. The Sioux City Symphony Orchestra calls the Orpheum Theatre its home.

520 Pierce St., Sioux City, IA 51101
712-277-2111 | siouxcitysymphony.org

Woodland Trails

Woodland Trails is located within the Winnebago Village Center. It consists of Art, Retail & Learning Center, Arts & Crafts of the Winnebago Ho-Chunk and other Woodland Tribes Art Center. The retail store/art studio incorporates a local and regional retail outlet for Native American artists and others. These unique creations are displayed in the gallery and the items available for sale in the retail area depict and incorporate traditional woodland Indian items that were used in everyday life and celebrations. Visitors will find this stop a warm and intriguing change from the most often depicted southwest style of Native American art.

509 Ho Chunk Plaza North, Winnebago, NE
402-878-4075 | woodlandtrailsart.com

Area Parks



Albertson Bridgeview Park

This park features 50 flags representing each state to commemorate patriotic pride in honor of all the servicemen and women during the Desert Storm War.

**W. 6th St. & Dakota Avenue
South Sioux City, NE**

Cottonwood Cove Park

This is a 4.5-acre park located on the banks of the Missouri River. It features a public boat ramp, camping, shelter and play equipment.

4th & Hickory, Dakota City, NE | 712-251-2189

Covington Park

W. 4th & 5th Avenue, South Sioux City, NE

Crystal Cove Park

This beautiful park is located on the southwest corner of South Sioux City. Crystal Cove is a 100-acre park with a 33-acre lake, 1.5 mile bike/hike trail, nature trails, fishing and shelter for rent. In 2005 it underwent a \$1.5 million renovation to dredge the lake to improve wildlife habitat. The park is home to over 200 species of birds and wildlife. Bird watching is a favorite activity of visitors to this park. The lake is stocked three times yearly with fish for summer and winter ice fishing. In 2011 a new 18-hole disc golf course was installed.

South Sioux City, NE 68776

Curry Park

Located at Crystal Cove Park, this area is dedicated to Jerry Curry and his family who have done so much for our community.

**South Ridge Dr. & Parkview Dr.
South Sioux City, NE**

Dakota Gardens

16th & Dakota Ave., South Sioux City, NE

Klasey Park

Klasey Park is located one block off of Dakota Avenue. It is home to Voss Fields and the SSC Legion Baseball. Voss Fields host multiple tournaments each summer including district and state tournaments. The park also has two shelters for rent, a basketball court, playground equipment and green space.

W. 11th & 1st Avenue, South Sioux City, NE

Raymond Park

E. 23rd & C St., South Sioux City, NE

Siouxland Freedom Park

Here is 55 acres of land located in the heart of Siouxland along the banks of the Missouri River. In full view of the river's bluff it is easily accessed from I-29 by simply crossing the Veterans Bridge, and turning directly onto Riverview Drive. The park houses the Memorial Dog Park in honor of fallen Navy SEAL, John Douangdara, who along with 29 fellow service members and his assault dog, Bart, were killed when their helicopter crashed in Afghanistan in 2011. It is connected to the Siouxland Trails system.

Construction of a 5,000-square-foot Interpretive Center will be completed within the year.

On site - a 250' granite wall engraved with more than 58,000 fallen service members from the Vietnam War. A fifty-space lighted concrete parking lot with a 150' flagpole that flies the 30'x60' American flag, are adjacent to the Wall and Interpretive Center.

**1801 Veterans Drive, South Sioux City, NE
siouxlandfreedompark.org**

Bike & Walking Trail

Al Bengtson Bike Trail

The South Sioux City trail started in the late 1970s with 1 mile of trail running through the center of town. It started at G Street and ended in Cardinal Park. There have been many additions to our trail system over the past 30+ years. In 2002, we dedicated our entire trail system to Al Bengtson for the hard work, dedication and advocating he did for our trails over many years of service to our

community.

The Al Bengtson trail is currently 19 miles long. We added another mile in the spring of 2011. We linked to the Tri-state Trail in 2002; their trail is 57 miles long. Currently our trail links to Dakota City and the Tristate area. We hope to one day link up with the Ponca trail system.

southsiouxcity.org/parks

Bowling Alleys

Plaza Bowl

3091 Hamilton Blvd., Sioux City, IA 51104
712-255-7663

Rush Werks

3828 Stadium Dr., Sioux City, IA
712-252-4545 | rushlanes.com

Dog Park

John Douangdara Memorial War Dog Park

Incorporated into a five-acre dog park, this memorial pays tribute to the devoted four-legged companions whose dedication to their masters was unparalleled in combat. The park houses the memorial in honor of fallen Navy SEAL, John Douangdara, who along with 29 fellow service members and his assault dog, Bart, were killed when their helicopter crashed in Afghanistan in 2011. It is connected to the Siouxland Trails system.

1101 Foundry Rd., South Sioux City, NE



Disc Golf Course

Crystal Cove Disc Golf Course

PDGA-sanctioned 18-basket course located at Crystal Cove. It is an estimated 62-par course with a mostly flat and moderately

wooded landscape. Fun, exciting and challenging for all levels of players.

1200 West 39th St. South Sioux City, NE
402-494-7535 | southsiouxcity.org/parks

Events Center

Tyson Events Center

The 10,000-seat event center is the home of the Sioux City Musketeers Hockey team, Sioux City Bandits Indoor Football team and also hosts many concerts, family productions and sporting events throughout the year.

It hosts the NAIA Volleyball Championship every fall and NAIA Division II Women's Basketball National Championship in early March.

401 Gordon Dr., Sioux City, IA
Box Office 712-279-4850
tysoncenter.com

Family Fun

Norm Waitt Sr. YMCA

The Y is a diverse, non-profit organization of men, women and children joined together by a shared commitment of youth development, healthy living and social responsibility.

Since no two communities are exactly alike, no two Y's are exactly alike. However, every Y strives to bring people just like you together. Our commitment to community ensures the opportunities for all to learn, grow and thrive.

We nurture life lessons in kids, foster health and wellbeing among people of any age, bring people together to pursue passions old and new and provide mutual support for everyone in our neighborhoods

- Swim Lessons • Group Fitness Classes • LiveStrong at the Y • Diabetes Exercise • Youth Sports – Soccer, Basketball, Flag-Football
- Child Watch for members utilizing the facility • Manage the outdoor pool • Family Programing – Family Nights, Parent Night Out, Healthy Kids' Day

601 Riverview Dr., South Sioux City, NE
402-404-8439 | nwsymca.org
info@nwsymca.org

IBP Ice Center

This 38,000 sq. ft. facility features an 85' x 200' ice rink and 900-person seating capacity. It is open year-round for youth hockey programs, public ice-skating, tournaments, figure skating and off-season in-line skating and indoor soccer.

3808 Stadium Dr., Sioux City, IA 51106
712-279-4880 | sioux-city.org/ibp-ice-center

Drop Zone Family Fun Center

Trampoline park - Open jumping, dodge



ball, ninja course, laser tag, slam dunk, little tyke's arena, "time out" lounge, arcade, and prizes.

3840 Stadium Dr, Sioux City, IA 51106
712-522-1722 | dropzoneff.com

Long Lines Family Recreation Center & Climbing Wall

The perfect place to hold an event - volleyball practice, conduct a meeting, celebrate a birthday, gather for a wedding reception, or just get together with friends for a pickup basketball game. There are many areas available for rent including meeting rooms, sports courts, batting cage and the area's only climbing wall.

The centerpiece of this family recreational facility is the world-class 53-foot climbing wall and free-standing boulder where you can practice your rock-climbing technique. Open gym times vary but are available to use the courts or climbing wall.

401 Gordon Dr., Sioux City, IA 51102
712-279-5126 | sioux-city.org/llfrc

Palmer's Olde Tyme Candy Shoppe

Candy museum and store featuring memorabilia and history of the family-owned business best known for its Twin Bing candy bar.

405 Wesley Parkway, Sioux City, IA
712-258-7790 | palmercandy.com

Fitness/Sports

First Serve Tennis Center,

A 25,300-square-foot, \$1.5 million facility. The climate-controlled First Serve has three indoor courts, each with dimensions suitable for Division I college tennis matches.

1500 Riverview Dr., South Sioux City, NE
The Arena Sports Academy

60,000 square feet for Siouxland athletes: Basketball and volleyball courts, wrestling and weight rooms, dance facility, classrooms and locker rooms. Featuring: Spacious seating for spectators, Wells Blue Bunny Family Lounge right on the floor,

Chesterman's Grill, a full-line restaurant and lounge overlooking the action.

4501 Southern Hills Dr., Sioux City, IA
Jeffery C. Dible Multiuse Complex

It has 15 full-size multipurpose fields that can be converted to varying sizes. The soccer complex sits along the banks of the Missouri River and Al Bengtson Trail.

1280 Riverview Dr., South Sioux City, NE
402-494-7535
Klasey Park

Located one block off of Dakota Avenue.

It is home to Voss Fields and the South Sioux City Legion Baseball. Voss Fields hosts multiple tournaments each summer including district and state tournaments.

The park also has two shelters for rent, a basketball court, playground equipment and green space.

**1101 1st Avenue, South Sioux City, NE
402-494-7540**

Long Lines Family Recreation Center

**401 Gordon Dr., Sioux City, IA 51102
712-279-6126 | sioux-city.org/llrc**

Norm Waitt Sr. YMCA

601 Riverview Dr., South Sioux City, NE

**402-404-8439
nwsymca.org | info@nwsymca.org
Riverview Complex**

Home to five baseball/softball fields, two- 300-foot fields and three- 200-foot fields. Batting cage facilities, press box with concessions and restrooms are provided. Home to Cardinal Little League, South Sioux City girls softball which have hosted many state and regional softball and baseball tournaments. All fields are agri-lime and 3 fields are lit.

831 Riverview Dr., South Sioux City, NE 402-494-7540 | southsiouxcity.org/parks

Golf

Covington Links Golf Course

The 18-hole golf course is nestled along the Missouri River. Big, mature trees and river views make this course a top-notch find for any golfer.

**497 Golf Road, South Sioux City
402-494-9841**

South Ridge Golf Club

A 9-hole golf course for families,

business travelers and golfers of all levels.

**618 West 29th St., South Sioux City, NE
402-404-8887**

Old Dane Golf Course

Challenging 9-Hole Course with a Golf Simulator.

**466 Highway 35, Dakota City, NE
402-987-1100**

Hunting, Fishing & Camping

South Sioux City and the surrounding area in northeast Nebraska offers ample opportunities for hunting and fishing enthusiasts. You'll love the hospitality of our lodging and camping facilities - they'll make your stay enjoyable. Waterfowl hunting along the Missouri River and its marshy backwaters is some of the best Nebraska has to offer. There is good white-tailed deer hunting in the bluffs above the river and in the creek bottoms that slice through the district's grasslands and croplands. Numerous wild turkeys can be found along the river bottoms and wherever there is an abundance of timber. Pheasants and bobwhite quail can be found in most agricultural areas. The Missouri River bluffs also support an excellent squirrel population.

Anglers in the northeast find exciting fishing action at many small farm ponds. Catfish, buffalo, carp, walleye and much more can be found in the mighty Missouri River.

The Nebraska Game and Parks Commission, ngpc.state.ne.us, offers a multitude of information including licenses and regulations. Below are some of the most popular hunting/ fishing areas and the opportunities they provide. CRP-MAP's are available at Walmart for those interested in

additional public and public access hunting/ fishing areas available for use.

Cottonwood Cove Park

A 4.5-acre park located on the banks of the Missouri River. Features a public boat ramp, camping, shelter and play equipment.

**14th & Hickory, Dakota City, NE
712-251-2189 | cityhall@dakotacity.net
dakotacity.net**

Basswood Ridge

Hunting: deer, rabbit, squirrel, turkey.

Homer, NE

Crystal Cove Park

Fishing: largemouth bass, trout, bluegill, channel catfish, pike.

South Sioux City, NE





Danish Alps State Recreation Area

Danish Alps State Recreation Area (SRA)

Near Hubbard, Neb. is a 746-acre state recreation area on Kramper Reservoir, a 226-acre lake. Danish Alps includes RV and tent camping, equestrian camping facilities, day use areas, a walking and hiking trail and excellent angling and wildlife watching opportunities.

Kramper Reservoir, a 226-acre lake, was planned with shoreline fishing and boat fishing in mind, and a wide spectrum of aquatic habitat features were incorporated to make this new reservoir suitable for fish to reproduce and grow rapidly. The lake has been stocked with largemouth bass, bluegill, black crappie, walleye and channel catfish. Anglers are reminded that Kramper Lake is a no-wake lake and that live bait fish are not allowed. Boaters are asked to clean, drain and dry their boats to prevent the spread of aquatic invasive species such as zebra mussels. A Nebraska park entry permit is required for each vehicle entering the park.

Hubbard, NE Contact Nebraska State Park System for reservations 402-755-2284.
nebraskastateparks.reserveamerica.com

Omadi Bend

Hunting: pheasants, quail, waterfowl.

Homer, NE

Ponca State Park

Ponca State Park is 2,200 acres, located in the wooded hills overlooking the unchanneled section of the Missouri River. There is a 17,000-square-foot facility called the Missouri National Recreational River Resource and Education Center that features conference rooms, gift shop, wildlife feeding stations, and a Missouri River Interpretive Display wing. Activities available include kayaking, shooting sports (shotgun, muzzleloader, archery, .22 rifles and pellet gun), fishing, swimming, hiking, nature programs, guided horse rides, cross-country skiing, sledding and more. The park attracts many birdwatchers during the peak of

spring migration (March through early May).

There are 22 miles of trails winding through the park and there is a hike/bike trail running from Ponca State Park into the city of Ponca (3 miles). A concrete boat ramp with dock provides river access. Anglers fish for carp, channel and flathead catfish, drum, paddlefish, sauger and walleye. Archery deer and turkey hunting is only allowed with a special permit. Ponca State Park features 15 (4-bedroom) mini lodges and 2 (2-bedroom) green cabins that are open year-round. There are also 14 seasonal rustic cabins, 93 electrical campsites and more than 50 year-round primitive campsites. Amenities include showers, water spigots (not hook-ups), a dump station, playground, two shelter houses, picnic tables and fire rings.

Ponca, NE

402-755-2284 | outdoornebraska.org

Scenic Park

Scenic Park is 133 acres and home to a 135-site campground; including electric sites, tent sites, pull throughs, and water/electric sites. We have 22 reservable sites with water, electric, cable and Wi-Fi. We also have a limited number of monthly sites and four cabins, outdoor pool, tennis courts, playground equipment, shelters for rent and a Missouri River boat ramp. Located on the Missouri River and near the Riverview Ball Complex, Dibble Soccer Complex scenic trails & bike paths and the Norm Waitt Sr. YMCA. Missouri River Access Fishing: buffalo carp, channel and flathead catfish, crappie, pike, walleye.

801 Riverview Dr., South Sioux City, NE

402-494-7531

campground@southsiouxcity.org
southsiouxcity.org/parks

Winnebago Wildlife & Parks Department

Hunting: white-tailed deer, turkey, pheasants

Nature Centers

Adams Homestead and Nature Preserve

The Adams Homestead & Nature Preserve is a 1,500 acre park in the Missouri River basin. The homestead was established in 1872 by Steven Sears Adams and included the family's original farmhouse, a historical barn, the Lamont Country School and Stavenger Lutheran Church. It also includes interpretive exhibits, more than seven miles of hiking and biking trails with opportunities to view native plants and wildlife. Located in the heart of South Dakota's fastest-growing region.

**272 Westshore Dr., North Sioux City, SD
605-232-0873**

Dorothy Pecaut Nature Center

This award-winning facility showcases the Loess Hills and provides opportunity for public recreation, education and stewardship. Classes, special events and meetings are held in the two 60-seat classrooms. The facility is handicapped accessible. Three miles of hiking trails offer spectacular views and connect with other park trails. An outdoor amphitheater and .25 mile accessible trail is

also available. Open Tuesdays – Saturdays 9 a.m. – 5 p.m.; Sundays 1 – 5; p.m. Closed on Mondays. Open until 8 p.m. in summer.

**4500 Sioux River Road, Sioux City, IA
712-258-0838**



Missouri River Education Center– Ponca State Park

“Where People and Nature Meet” describes the beauty and solitude of this conference center. Along with meeting rooms, this facility offers a terrific visitors center and hands-on interpretive center focusing on the natural cultural history of the Missouri River.

402-755-2284

Pools & Waterparks

Norm Waitt Sr. YMCA Fitness & Family Fun Pools

The Y's beautiful eight-lane 25-yard fitness pool is home for lap swimmers, aqua aerobic classes, swim teams, water exercise, swim lessons and open swim. In addition, the Y offers Siouxland's best family pool – a warm water, zero-depth entry pool with a water slide and kids' spray feature suppling hours of fun. This pool is also used for family swim, youth swim lessons, warm water exercise and is available for birthday parties.

Scenic Park Aquatic Center

A unique water slide is a feature attraction. The 109' figure-eight water slide is the only one of its kind in the area. The Aquaplex features a 50-meter, eight-lane competition-style pool with two diving boards as well as a 40' x 40' wading pool with fountain for kids. Complete with concessions and picnic area. Scenic Park features tennis courts, soccer fields, a campground with 135 modern sites and a

small marina with bicycle and pedestrian paths around the park.

**601 Riverview Dr., South Sioux City, NE
402-404-8439
nwsymca.org info@nwsymca.org**



Entertainment

Live Entertainment



New Stage Players

A unique entertainment organization, NEW STAGE PLAYERS, is the first amateur theatrical troupe to call South Sioux City, Nebraska home. You can be a part of it! Audition. Volunteer.

They put on several productions during the year and partner with various groups and businesses in the community.

2020 Upcoming Events:

Jan. 31-Feb. 2: Frozen, Jr.

April 17-20, 23-26: The Nerd

June 20-21: Penguin Project Presents – Roald Dahl's Willy Wonka, Jr.,

July 24-27, July 30-Aug. 2: Big Fish

Oct. 29-Nov. 2, Nov. 5-8: The Addams Family

New Stage Players is the 28th chapter in the nation for the Penguin Project - a new program focusing on giving individuals with developmental disabilities/special needs the opportunity to develop creative and social skills as they partner and network with others, while participating in a fully realized musical production

3201 Dakota Avenue

South Sioux City, Nebraska

newstageplayers.com

Haunted Crystal Cove

Local park and lake is turned into a scary thrilling experience with a kid friendly version over the weekend leading up to Halloween.

Crystal Cove, W 39th St, SSC, NE

Riverview Outdoor Center

This multipurpose entertainment area, host to the annual Cardinal Festival and utilized for multicultural events, outdoor movies, concerts and company outings, just to name a few. ROC is complete with a concert stage and movie wall located in a large parking area that can be utilized with food vendors and a beer garden for outdoor concerts, laser light shows, summer movies and community festivals. Easy access and plenty of parking.



1280 Riverview Dr., South Sioux City, NE

Downtown Live

Enjoy a variety of live music around the beautiful fountain on Thursday evenings during June to September.

4th & Virginia St., Sioux City, IA
fridaysonthepromenade.com

Food Truck Fridays

Every Friday during the summer in downtown Sioux City, hundreds of Siouxlanders enjoy a variety of local and out of town food during the lunch hour.

facebook.com/Siouxcityfoodtrucks



LAMB Arts Regional Theatre

For over 20 years LAMB productions have provided the high-quality live theatre presentations including dramas, comedy and musicals, running Sept. - May. LAMB School of Theatre and Music offers a wide range of courses for babies through adults.

417 Market St., Sioux City, IA
Office 712-255-9536 or
School 712-293-9030 | lambtheatre.com

Little Red Hen Theatre

The Little Red Hen Theatre is a black box design that allows for changes in seating and stage location. Enjoy a variety of theatrical productions and other arts/cultural activities. Seating for 140.



316 Main St., Wakefield, NE
402-287-2818 | littleredhentheatre.com

Orpheum Theatre

The spectacular, renovated Orpheum Theatre is host to live theatre, concerts, movies and outstanding national and local performances.

6th & Pierce, Sioux City, IA Office
712-258-9164 | orpheumlive.com

Saturday in the Park

Saturday in the Park is one of the premier festivals in the upper Midwest and is best known for its eclectic mixture of musical traditions. Live music acts are offered throughout the day at one of several stages located within the park. Saturday in the Park is an annual festival that is held primarily at the Grandview Park Municipal Bandshell in Sioux City, Iowa.



Started in 1991, the festival falls on the Saturday closest to the 4th of July and attracts around 50,000 people from all over the Midwest for the weekend. The festival coincides with an annual pilgrimage of representatives from Sioux City's sister city, Lake Charles, Louisiana, adding a Mardi Gras-inflected Cajun accent.

saturdayinthepark.com

Sioux City Symphony Orchestra

Each year the symphony presents a 7-concert classical and pops series, a 3-concert family series, and a wide variety of educational programming throughout the region. The Sioux City Symphony Orchestra calls the Orpheum Theatre its home.



For concert or ticket info.
712-277-2111 siouxcitysymphony.org

Sioux City Community Theatre

One of Siouxland's community theatres with eight main stage productions per season. Outstanding youth programming.

1401 Riverside Blvd., Sioux City, IA
Box office 712-233-2788 or 712-233-2719
sccttheatre.org

Gaming



Hard Rock Hotel & Casino Sioux City

MORE THAN JUST GAMING – A TRUE ENTERTAINMENT DESTINATION

Hard Rock Hotel & Casino Sioux City is an award-winning gaming destination offering more than 850 slot machines and 26 table games. The property's Hard Rock Hotel is a AAA Four Diamond rated hotel, a distinction which only five percent of the more than 28,000 properties approved by AAA achieve. Complementing the Hotel and Casino are six restaurants and bars including the World Tour Buffet, Fuel American Grill, and Main + Abbey, the property's AAA Three Diamond rated restaurant. Throughout the property, guests can experience the legends by viewing the vast Hard Rock memorabilia collection, with iconic pieces from SLASH to Johnny Cash.

EXPERIENCE THE ROCK STAR TREATMENT

- AAA Four Diamond Hard Rock Hotel
- Hard Rock Casino
- Rock Shop®
- 100 Piece Music Memorabilia Collection
- Two Live Entertainment Venues
- Six Restaurants and Bars

111 3rd St., Sioux City, IA | 844-222-7625
hardrockcasinosiouxcity.com

'The Strip' in North Sioux City

More than 300 gaming machines can be found in a two-block area known as "The Strip" in North Sioux City. Billed as the "mini-Vegas of the Dakotas," North Sioux offers dining and nightly entertainment as well as gambling on video poker, Blackjack or Keno machines.

North Sioux City, SD

WinnaVegas Casino Resort

Opening in April 1992, WinnaVegas has grown over the years to become the largest gaming floor in the area. Our total gaming space is 54,353 square feet. The casino has over 850 slot machines – the most in Siouland, 10 casino table games, poker room with 3 tables and bingo hall. We also feature a beautiful hotel, delicious dining options, a spacious event center and multiple meeting rooms.

We focus on taking good care of our customers and are proud of our reputation for being so friendly – and the most fun! We always want our guests to enjoy themselves and have a better chance at winning.

1500 330th St, Sloan, IA 51055
712-428-9466 or 1-800-468-9466

Movies

Main Street Promenade Cinema 14

Reserved seating, recliners, state-of-the-art projection and sound. Expanded concession stand serving alcohol. Adjacent to historic 4th St. and the Convention Center.

924 4th St., Sioux City, IA 712-277-8300

AMC Southern Hills 12

Reserved seating. Heated recliners. MacGuffin's Bar. Make your favorite movie an experience!

4400 Sergeant Rd., Sioux City, IA
712-276-2344



Dog Show Destination

South Sioux City has become a known dog show destination over the past few years. It is a dog friendly town with an amazing dog park dedicated to fallen four-legged companions in combat.



SIoux CITY

AN EXPERIENCE OF **ROCKIN'** PROPORTIONS

With over 850 slot machines and 20+ table games, three award-winning restaurants, two explosive entertainment venues and the only AAA Four Diamond Award-winning hotel in the tri-state region, we deliver amplified service you'll only find in rock 'n roll.

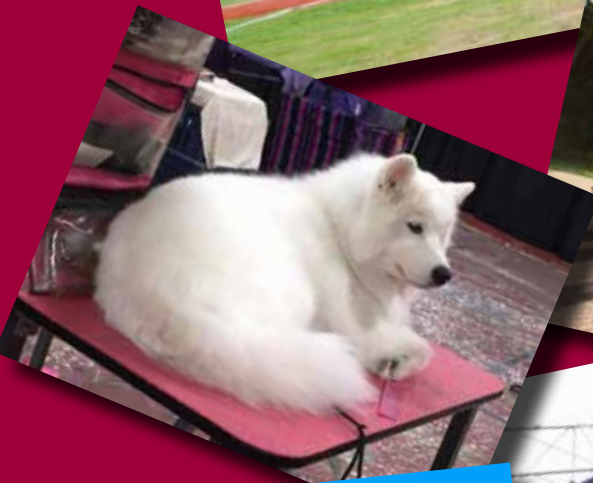
**At Hard Rock Hotel & Casino Sioux City,
we offer nothin' but a good time.**

BOOK YOUR STAYCATION AT HRHSIOUXCITY.COM

111 3RD STREET | SIOUX CITY, IA 51101 | HARDROCKCASINOSIOUXCITY.COM    

Must be 21 or older to gamble. If you or someone you know needs gambling treatment, call 800.BETS.OFF.

Welcome to South Sioux City!







Sports Entertainment

Sioux City Bandits Indoor Football



The Sioux City Bandits are a professional indoor football team and a charter member of the Champions

Indoor Football. Based in Sioux City, Iowa, the Bandits play their home games at the Tyson Events Center. They have seen six different leagues and their season starts in March and goes to June.

712-224-3900 | scbandits.com

Sioux City Musketeers Hockey



Mention hockey in Siouxland and you're talking about Sioux City Musketeers, one of the strongest franchises in the United States Hockey League since the developmental junior

league was reorganized in 1980. Home games are played at the Tyson Events Center. Season and general ticket information is available through the Musketeers office. 712-252-2116 | musketeershockey.com

Explorers Baseball



Explorers Baseball has become a summertime tradition, celebrating 22 years in Sioux City. They are a professional baseball team and play their home games at beautiful Lewis and Clark Park.

712-277-9467 | xsbaseball.com

The Sioux City Stampede

Formed in September 2013 as a Limited Liability Corporation to provide a venue for



competitive adult men's semi-professional football. Whether a player's goal is to advance to the next level or simply to extend his time on the field, the Sioux City Stampede will focus on developing that player to his

best potential. The Stampede will strive to be a community leader, participating and giving back to our Siouxland Community.

712-389-5546 | 712-490-1756
712-253-3949 | siouxcitystampede.com

McArthur
SHEET METAL WORKS

NEW BYSTRONIC FIBER LASER AND PRESS BREAK
For quicker, more accurate & detailed cutting and bending

Stainless Steel • Aluminum • Hot Roll/Cold Roll
• Galvanized • Copper • Brass

501 W. 9th St. South Sioux City, NE 68776 | Office: 402-494-4269 | Fax: 402-494-4260
msm@mcarthursheetmetal.com | mcarthursheetmetalworks.com



Area Shopping



Enjoy all the cultural, unique shopping opportunities to be found in South Sioux City. You will find that we have something for everyone, from Latin American grocers, markets and clothing stores to the usual big box and dollar stores. Among the many products you will find in South Sioux City are fresh produce, leather goods, pottery and formal dresses. Additionally, at allnative.com located in Winnebago, you will be able to peruse many wonderful specialty products crafted and created by Native American artists and companies.

South Sioux City is also within minutes of three of the tri-state region's largest shopping malls.

Allnative.com

Ho-Chunk Plaza North Winnebago

503 Ho-Chunk Plaza, Winnebago, NE
402-878-2400

Lakeport Commons

Located at the crossroads of Hwy. 20 and Lakeport Road across from Southern Hills Mall. This open-air mall is anchored by Kohls, Gordmans, Best Buy and Old Navy. With over 30 stores, restaurants and more, this mall has it all!

5001 Sergeant Rd., Sioux City, IA
866-271-8700
shoplakeportcommons.com

Marketplace Mall

Visit Sioux City's Marketplace where you'll discover an exceptional shopping experience. Our village-style shopping center features a variety of unique stores, offering a delightful collection of fine fashion, specialty shops, salons, food, drink and more. Enjoy a nice mix of retail and service specialties from a variety of locally owned and national-brand stores.

Marketplace is anchored by Sioux City's newest, and Iowa's largest, Hy-Vee supermarket. Our spacious parking lots allow for quick access to your favorite stores.

29th & Hamilton Blvd., Sioux City, IA
marketplaceonhamilton.com

Southern Hills Mall

With over 110 specialty stores, Southern Hills Mall is anchored by Sears, Barnes & Noble, Younkers and Scheels All Sports. It features a dozen restaurants in the Cafe Court, and a 12-screen movie theater with stadium seating.

4400 Sergeant Rd., Sioux City, IA
712-274-0109 | southernhillsmall.com

Sunnybrook Plaza

Just off U.S. 20/75's Sunnybrook Dr. Exit on southeast corner of Sioux City MSA in heart of regional shopping area. Directly connected to Lakeport Commons and Southern Hills Mall. Shops include McDonald's Restaurant, Lowe's, Target, Marshalls, Ulta Beauty and Bed Bath and Beyond.

5706 Sunnybrook Dr., Sioux City, IA
866-877-3705

About South Sioux City



South Sioux City

A growing and prospering community, South Sioux City is the largest town in Dakota County. Currently, its population is nearly 13,000 residents and it has many traditional small-town values that are common in Nebraska. The city's vision and goal is to provide a tremendous quality of life defined by outstanding educational and employment opportunities for all citizens. A long-term goal is to be a recreational, cultural, and technological hub of the Midwest.

Weather and Climate

Fun can be had during all seasons in Dakota County. Residents and visitors alike enjoy the hot summer, perfect for boating and other outdoor activities. The average summer temperature is 85 degrees, with many sunny days to enjoy. The spring and fall seasons are often the favorite times of year for many people, as temperatures cool to a

very comfortable level. Witnessing the blooming of plants, flowers and trees in the spring is a sight to be seen, and the changing of colors in the fall is something you can't miss. Winter fun can be had as well, with many indoor and outdoor activities to choose from. Travelers will find the overall climate quite enjoyable.

Population

The 2019 estimated population is 12,838 residents for South Sioux City. The median household income is \$53,199 (2014-2018). The housing values as well as cost-of-living expenses are traditionally lower than the state and national averages. The racial makeup of the city was 47.9 percent Hispanic or Latino, 38.7 percent White, 7.1 percent Black or African American, 3.8 percent Asian, 2.4 percent Native American and 1 percent identified as multiple races. The crime rate is very low compared to national averages as well.

Source: U.S. Census Bureau

Brief History...

- 1804 Sergeant Floyd, a member of the Lewis and Clark Expedition and one of the first men in South Sioux City, was buried on a bluff near here.
- 1854 European Settlement on Nebraska side of the river.
- 1855 John Feenon launched a “crude-looking” flat boat.
- 1856 “Harney City” registered for the troops stationed in the vicinity as protection against Indian raids. The town failed to develop.
- 1856 “Stanton” was laid out by Mr Stanton between Covington and the bend on Missouri River. It boasted 30 buildings - 13 of which were saloons.
- 1856 Dakota City was platted in 1856 and incorporated in 1858.
- 1857 Ferries and the steamer Robert Burnes shuttled people and goods.
- 1858 “Pacific City” was granted incorporation papers. Floods discouraged inhabitants, and what was left became known as “Silver Lake”.
- 1886 Rev. George Haddock was assassinated because he crusaded against gambling, prostitution, and saloons. As a result saloon keepers and gamblers fled across the river, setting up shop in Nebraska.
- 1870 “Covington,” formerly “Newport” and “South Covington merged.
- 1887 Another town was platted and incorporated. This settlement called itself “South Sioux City”.

FOR MORE INFORMATION

| | |
|--|--------------|
| City Hall | 402-494-7500 |
| Fire Department | 402-494-7555 |
| Law Enforcement Center | 402-494-7555 |
| Parks and Recreation..... | 402-494-7535 |
| Public Library | 402-494-7545 |
| South Sioux City Area Chamber of Commerce | 402-494-1626 |
| South Sioux City Area Convention & Visitors Bureau | 402-494-1307 |
| Scenic Park Campground | 402-494-7531 |
| Norm Waitt Sr. YMCA | 402-404-8439 |

MAJOR EMPLOYERS

| | |
|---|-------|
| Tyson Fresh Meats | 4,500 |
| www.tyson.com | |
| Great West Casualty Co. & Joe Morten & Son, Inc. Insurance | 580 |
| www.gwccnet.com | |
| South Sioux City Community Schools | 550 |
| www.sccardinals.org | |
| Empirical Foods | 547 |
| www.empiricalfoods.com | |
| Walmart | 330 |
| www.walmart.com | |
| Hy-Vee | 224 |
| www.hy-vee.com | |
| Gerkin Windows & Doors | 215 |
| www.gerkin.com | |
| South Sioux City Marriott Riverfront | 180 |
| www.marriott.com/suxmc | |
| City of South Sioux City | 142 |
| www.southsiouxcity.org | |
| F L Smidth | 110 |
| www.flsmidth.com | |
| Sioux City Foundry, Inc | 110 |
| www.siouxcityfoundry.com | |

Dakota County Profile

South Sioux City

A prospering community, South Sioux City is the largest town in Dakota County. Its population is 12,840 residents, and it has many traditional smalltown values that are common in Nebraska. However, its close proximity to the larger city of Sioux City allows residents and visitors alike to escape to find some of the amenities found in larger communities. Its close proximity to Interstate 29 and the Missouri River make it a very easy place to travel to and from, and allows for some wonderful recreational opportunities.

For more information: 402-494-7500
southsiouxcity.org

Dakota City

One of Nebraska's oldest communities located on the banks of the Missouri River. A growing community of over 1,880 residents serving as the county seat of Dakota County. Located only 5 minutes away from major entertainment, colleges, sporting venues and medical care. Dakota City boasts numerous recreational opportunities, historical sites, new residential housing subdivisions, new industrial parks, and community events!

For more information 402-987-3448
dakotacity.net

Hubbard

The town of Hubbard is known as the hub of Dakota County's farming community. The current population is around 230 residents and its history dates back to 1880. It sits just 10 miles southwest of Dakota City.

Homer

Around 530 residents make their home in Homer, Nebraska. Located on Highway 77, the town has a good balance of shops and businesses. Other economic activities for this community include farming and cattle production.
homerne.net

Emerson

Emerson has the distinction of being the only town in Nebraska located in three counties. Aside from Dakota County, the entire west side of Emerson is in Dixon County and the southeast portion in Thurston County. Today, over 800 people reside in Emerson.
emerson-ne.com

Jackson

The smallest community in Dakota County, Jackson's population currently sits just above 200 people.

BY THE NUMBERS

**Dakota County
Total Population**
20,083

Source: U.S. Census Bureau, Quick Facts,
July 1st, 2019

Total Housing Units
7,871

Source: U.S. Census Bureau, Quick Facts,
July 1st, 2019

Median Housing Value
\$114,900

Source: U.S. Census Bureau, Quick Facts,
2014-18

Median Household Income
\$55,017

Source: U.S. Census Bureau,
Source: Quick Facts 2014-18

Unemployment Rate
3.2%

Source: U.S. Department of Labor,
Bureau of Labor Statistics

**Population Aged 25+ with
High School Diploma**
74.6%

Source: U.S. Census Bureau, Quick Facts
2014-18

**Population Aged 25+ with
Bachelor's Degree or Higher**
12.5%

Source: U.S. Census Bureau, Quick Facts
2014-18



Offering Primary Care and Walk-In Urgent Care



Accepting all patients - insured or uninsured

**On-site interpreters for Spanish and
Somalian & financial counselor**

3410 Futures Drive, South Sioux City, NE

402-412-7242

Hours: Monday and Thursday 8 a.m. to 8 p.m.
Tuesday, Wednesday and Friday 8 a.m. to 5 p.m

Economic Development

Economic Development

The goal of the Community Development Agency of South Sioux City is to facilitate retention, expansion and attraction of desirable business and industry to South Sioux City. They serve the area by creating new and meaningful employment opportunities, increasing the sales tax base and facilitating housing development in South Sioux City. The CDA can assist those looking for available land and buildings, as well as help facilitating a successful business move or launch. For more information on business and industry in South Sioux City, contact: Oscar Gomez at 402-494-9407.

South Sioux City Chamber of Commerce

South Sioux City's Chamber of Commerce is an energizing and vitalizing force in the community. Its members are concerned with not only commercial, but civic and social issues within South Sioux City. Their overall goal is to maintain and grow a healthy business climate in the South Sioux City area. 402-494-1626

A Unique, Walkable Urban Community - Flatwater Crossing

Flatwater Crossing is an exciting master planned residential community strategically located along the Missouri River in South Sioux City,



29th Street Ribbon Cutting



South Sioux Animal Hospital new location



New Starbucks location inside Hy-Vee

Nebraska. Designed as a walkable urban neighborhood, Flatwater Crossing offers residents a vibrant community intertwined with a network of trails, greenways, public plazas, natural landscaping, wildlife, and breathtaking river views.

The development features a unique mix of apartments, townhomes and cottages, village homes, standard homes, and estate homes, as well as a Village Center perfect for retail, restaurants, and office space. Flatwater Crossing's aim is to create a sense of community that attracts a variety of residents, from millennials, young professionals, and families, to empty nesters and retirees.

hochunkcapital.com/flatwater_crossing

Get Connected



City of South Sioux City

southsiouxcity.org

Dakota County Newspaper

dakotacountystar.net

Dakota County

dakotacountyne.org

Growing Community Connections

growingcommunityconnections.com

Lewis & Clark Scenic Byway

lewisandclarkscenicbyway.com

Mundo Latino Spanish Newspaper

mundolatinonetwork.com

Northeast NE Travel

visitnebraska.com

Siouxland Chamber of Commerce

siouxlandchamber.com

Sioux City Convention & Visitors Bureau

visitsiouxcity.org

South Sioux City Area Chamber of Commerce

southsiouxchamber.org

South Sioux City Community Schools

ssccardinals.org

South Sioux City Convention & Visitors Bureau

southsiouxchamber.org

Statewide Tourism

visitnebraska.com

Real Estate & Apartments



Local Real Estate Companies

Cardinal City Realty

112 E. 21st St., South Sioux City, NE
402-494-5444
cardinalcityrealty.com

Century 21 ProLink

1114 4th St., Sioux City, IA
712-224-2300
C21prolink.com

Coldwell Banker Associated

1222 Pierce St, Sioux City, IA 51105
(712) 255-7310
coldwellbankerabr.com

Keller Williams Siouland

103 S Virginia St #100, Sioux City, IA 51101

(712) 226-1900
kw.com

Salem Real Estate (Commercial)

700 Pierce St, Sioux City, IA 51101
(712) 224-4100
salemrealestate.biz

United Real Estate Solutions

1913 Dakota Avenue, South Sioux City, NE
402-494-2031
unitedrealestatesolutions.com

Woodland Realty

2018 Indian Hills Dr, Sioux City, IA 51104
(712) 239-3820

Apartments/Home Rentals

Cardinal Cove Town Homes/Apts

4855 Bradford Ln., Sioux City, IA
712-251-5241

Dakota Pointe Apartments

208 E. 39th St., South Sioux City, NE
402-494-8210
vbclink.com/apartments/
dakota-pointe-apartments

Interstate Apartments

1610 C St., South Sioux City, NE
402-494-2221 | monarchinvestment.com

Liberty Place

800 W. 25th St. #A22, South Sioux City, NE
402-241-5017 | libertyplace.seldin.com

Parkview Industries

1203 1st Avenue, South Sioux City, NE
402-494-2858

Shen-Dae-Man Properties LLC

729 E. 7th St., Ste. 2, South Sioux City, NE
402-494-7952 | shendaeman.com



801 G Street
South Sioux City, NE 68776
402-412-2462

BluStonehomes.com

- 45 years in the business
- Multiple floorplans to choose from
- Custom design welcome
- Highest quality materials
- Energy efficient features
- One stop shopping for floors, siding, cabinets, paint and more!

Call or stop by
our showroom in
South Sioux City to
get your dream home
started today!



BUILD WITH THE BEST!



FLATWATER CROSSING

Live in South Sioux City's
Vibrant New Community!

Lots are now available in this exciting walkable urban community, strategically located along the Missouri River in South Sioux City, Nebraska!

- Unique mix of apartments, townhomes, cottage homes and estate homes
- Network of trails, greenways, and public plazas
- Village Center with retail, restaurants and office space
- Natural landscaping and wildlife

Breathtaking river views



Adding Townhomes, Apartments and Commercial Space Summer of 2019!



FOR LOT INFORMATION: Pat Wojcik 712.251.0983 or 712.226.1900

Licensed in IA, NE, and SD

Flatwatercrossing.com

Community Organizations



Abu Bekr Shrine Temple

820 Nebraska St.
Sioux City, IA
712-255-7991

American Heart Assoc.

1131 9th Street
Sheldon, IA
712-540-7299

American Legion Post #307 Legion Hall

109 E. 19th St.
South Sioux City, NE
402-494-4543
or 402-494-5556

American Red Cross

4200 War Eagle Dr.
Sioux City, IA
712-252-4081

Boys & Girls Club of SC

823 Pearl Street
Sioux City, IA
712-258-5545

Building Blocks for Community Enrichment

1312 Dakota, Ste. A
South Sioux City, NE
402-851-1097

Cardinal Christmas Baskets

590 Laura Ln.
South Sioux City, NE
605-235-2292

Center for Siouxland

715 Douglas St.
Sioux City, IA
712-252-1861

Chamberettes

125 E 19th St.
South Sioux City, NE
712-259-3420

Dakota County Historical Society

729 200th St.
Dakota City, NE
402-987-3516

Dakota County 4-H Clubs

1505 Broadway
P.O. Box 129
Dakota City, NE
402-987-2140

Dakota County Voices for Food

1505 Broadway
Dakota City, NE 68731
402-987-2140

Eastern Star Laura Chapter #301

504 Covered Wagon Cir.
South Sioux City, NE
402-494-4922
or 402-494-1358

Foodbank of Siouxland

1313 11th St.
Sioux City, IA
712-255-9741

Friends of Library

521 E. 30th St.
South Sioux City, NE
402-494-7545

Fraternal Order of Eagles

801 W. 13th St.
South Sioux City, NE
402-494-2788

Goodwill of the Great Plains

3100 W. 4th St.
Sioux City, IA
712-258-4511

Growing Community Connections

1520 Morningside Ave.
Sioux City, IA
(712) 222-6383

Haven House

117 E 28th Street
South Sioux City, NE
(402) 494-7592

Heartland Counseling Services, Inc.

917 W. 21st St.
South Sioux City, NE
(402) 494-3337

Home Builders Assoc.

33900 Stadium Dr.
Sioux City, IA
712-255-3851

Hospice of Siouxland

3220 Plaza Dr., Ste. D
South Sioux City, NE
402-404-8323

Hubbard Betterment

PO Box 160
Hubbard, NE
712-490-0950

Jackson Recovery Centers

800 5th Street
Sioux City, IA
(712) 234-2300

June E. Nylan Cancer Cntr

230 Nebraska St.
Sioux City, IA
712-252-0088

Keep NE Nebraska Beautiful

729 200th St.
Dakota City, NE
402-987-3516

Kiwanis

3309 Dakota Avenue
South Sioux City, NE
712-277-4561 ext 228

Knights of Columbus

2301 W. 29th St.
South Sioux City, NE
402-494-2516

LifeServe Blood Center

1019 Jones St.
Sioux City, IA
712-635-4930

Mary J. Treglia

900 Jennings St.
Sioux City, IA
712-258-5137

NE Nebraska Senior Center

1501 W. 29th St.
South Sioux City, NE
402-494-3984

Pheasants Forever

P.O. Box 245
South Sioux City, NE
402-494-5213

Reddy Toastmasters Club

810 29th St.
Sioux City, IA
712-234-2816

SIMPCO

1122 Pierce St.
Sioux City, IA
712-279-6286

Sioux City Growth Organiz

P.O. Box 3565
Sioux City, IA
712-212-5025

Sioux City SCORE 104

320 6th St.
Sioux City, IA
712-277-2324

Siouxland Coalition Against Human Trafficking

(712) 281-4840

Siouxland Habitat for Humanity

1150 Tri View Avenue
Sioux City, IA
712-255-6244

Siouxland Hospice

3220 Plaza Dr., Ste. D
South Sioux City, NE
402-404-8323

Siouxland Human Investment Partnership

1520 Morningside Ave.
Sioux City, IA
712-222-6389

Siouxland Youth for Christ

1807 Nebraska St.
Sioux City, IA
712-255-9599

South Sioux City Area Chamber of Commerce & Tourism

4401 Dakota Avenue
South Sioux City, NE
402-494-1626

South Sioux City Community Foundation

1615 1st Avenue
South Sioux City, NE

South Sioux City Morning Optimist Club

441 E 29th St.
South Sioux City, NE
402-494-3448

STARS, Inc

33148 K-22
Sioux City, IA
712-239-5042

Support Siouxland Soldiers

1551 Indian Hills Dr.
Sioux City, IA
712-541-8020

Susan G Komen - Siouxland

700 4th St., Ste. 220
Sioux City, IA
712-277-1553

The Salvation Army Thrift Store

1901 Cornhusker Dr.,
Ste. 105
South Sioux City, NE
402-494-7997

United Way of Siouxland

701 Steuben St.
Sioux City, IA
712-255-3551

Veterans of Foreign Wars

Post #10753
216 E. 13th St.
South Sioux City, NE
402-494-2133

Vision Dakota County

1000 W. 29th St., Ste. 215A.
South Sioux City, NE
712-389-2145



Church Directory



DAKOTA CITY

Salem Lutheran Church

Highways 35 & 110
Dakota City, NE
402-987-3582

United Methodist Church

1523 Locust St.
Dakota City, NE
402-987-3562
dakotacityumc.org

EMERSON

Sacred Heart Catholic Church

604 N. Main St.
Emerson, NE
402-695-2342

St. Luke's Lutheran Church

211 E. 2nd St.
Emerson, NE
402-695-2313

St. Paul's Lutheran Church

103 W. 3rd St.
Emerson, NE
402-695-2184

HOMER

St. Cornelius Catholic Church

410 N. 3rd St.
Homer, NE
402-494-5423

St. Paul's Lutheran Church

411 James St.
Homer, NE
402-698-2321

United Methodist Church

415 John St.
Homer, NE
402-698-2448

HUBBARD

St. Mary's Catholic Church

Hubbard, NE
402-632-4283

Trinity Lutheran Church

204 Main St.
Hubbard, NE
402-698-2321

JACKSON

St. Patrick's Catholic Church

203 E. Elk St.
Jackson, NE
402-632-4292

SOUTH SIOUX CITY

Calvary Chapel

3900 Dakota Avenue
Ste. 10
712-522-9517
calvarychapelsiouxland.com

Eastside Baptist Church

822 E. 20th St.
402-494-1193

The Evangelical Church

813 B St.
402-494-3897

First Lutheran Church

3601 Dakota Avenue
402-494-5461
firstlutheranssc.org

First Presbyterian Church

125 E. 21st St.
402-494-1868

Glad Tidings Lighthouse

410 E. 10th St.
402-494-2185
gladtidingslighthouse.org

Hope Lutheran Church

218 W. 18th St.
402-494-1847

Living Water EFC

813 B St.
402-412-3901

River Hills Church Assembly of God

1101 5th Avenue
402-494-1852
riverhillschurch.com

Siouxland Community Bible Church

17th and B St.
402-241-0744

St. Michael's Catholic Church

1405 1st Avenue
402-494-5423

St. Paul United Methodist Church

2003 A St.
402-494-4138

Tri-State Christian Church

3805 G St.
402-494-6929

Area Schools



The South Sioux City Community School District consists of six elementary schools, one middle school, and one high school. In addition, the school district operates preschool programs, an alternative high school program, special education programs at the Cardinal House and Transition Apartments. The school district serves South Sioux City, Dakota City, and the surrounding rural area in Dakota County.

South Sioux City and Dakota City, as well as all of Dakota County, continue to experience population growth. The school district has responded to this growth by renovating existing schools, building new schools and acquiring ground for future school construction. In 1993, two new elementary schools were opened. Both schools have added additions to accommodate continued growth in the community. Each of the other four elementary schools has experienced major renovations in recent years. A significant expansion on the middle school and high school site was completed in 2001.

Student learning drives decisions in the South Sioux City Community Schools. A comprehensive curriculum provides students with educational experiences that prepare them for success in college and in the workforce. Educators work in professional learning communities, a researched-based practice, where they “commit to working collaboratively in ongoing processes of collective inquiry and action research to achieve better results for students we serve.” Operating as a professional learning community, teachers intensely focus on what each student should know and be able to do.

The school district employs over 500 teachers and support staff. Highly trained and hard-working teachers work with over 3,900 students during the year to help prepare them to be successful. Teachers receive specific training in effective methods for teaching reading and writing and using classroom assessments to evaluate all students’ learning. The school district enjoys the support of the communities of South Sioux City and Dakota City. On numerous occasions it has worked with these two communities, as well as Dakota County, to enhance learning opportunities for students while creating efficiencies that result in tax savings for residents. Community groups use school facilities extensively in the evenings and on weekends.

The school district has worked closely with Northeast Community College, Wayne State College, and the City of South Sioux City to develop a College Center in South Sioux City. The College Center is easily accessible for high school students. Students benefit by being able to take college-level classes while in high school as well as having a post-secondary school experience available in their own community.





Gateway to Learning

(Part of South Sioux City High School)

Gateway to Learning is home for the Alternative Education Program that serves students during the school day as well as offering a night school program. The school currently has 10 staff members.

1000 West 29th St., Ste. 110

South Sioux City, NE

402-494-0121 | ssccardinals.org

Cardinal Elementary

The school of 404 students offers many opportunities for its students to learn both inside and outside of the classroom with programs such as English as a Second Language, Pervasive Developmental Disorders, S&P and Title One Reading.

The school currently has 41 full- and part-time teachers, and 26 paraprofessionals. With 18 classrooms, class size is about 23 students with a student-to-teacher ratio of nine to one. Outside of the classroom, students have an opportunity to be in long and short term groups, including enrichment programs, student council, science fair, spelling bee, rock climbing, Title 1 reading night and grade level specific enrichment activities.

We also have a very active PTO that helps with family activities such as: Family Fun Night, Curriculum Night, Carnival, and Parent Café. K - 5th 8:00 a.m. - 3:05 p.m.

820 East 29th St., South Sioux City, NE

402-494-1662

**[ssccardinals.org/schools/
cardinal-elementary](http://ssccardinals.org/schools/cardinal-elementary)**

Covington Elementary

Covington Elementary opened its doors for the first time as an elementary school in August of 2002 with a total population of 292 students in grades K-5. Located in the heart of South Sioux City, the school now has 375 students, 66 staff members and 18 classrooms. The school also offers a number of programs, including the Home Reading Program, Student Leadership Council and many more. With their school motto "Climbing Toward Excellence," students benefit from a high level of parent involvement, generating 97 percent attendance at parent/teacher conferences. The mission of Covington Elementary is to prepare all students for lifelong learning and responsible citizenship. School starts at 8:00a.m. and releases at 3:05p.m. Tuesday – Friday. School releases at 2:05p.m. on Mondays.

2116 A St., South Sioux City, NE

402-494-4238

**[ssccardinals.org/schools/
covingtonelementary](http://ssccardinals.org/schools/covingtonelementary)**

Dakota City Elementary

Dakota City Elementary became a part of the South Sioux City Schools after being its own entity for many years. The school has an enrollment of 200 K-5th grade students, 26 certified teachers and 14 non-certified staff. The Dakota City school family believes all children can learn and focuses on fostering this love of learning for all students. Normal school hours are 8:00 a.m. - 3:05 p.m., with teachers arriving at 7:45 a.m. Students are dismissed every Monday at 2:05 p.m. allowing the staff to work in Professional Learning Communities.

1801 Locust St., Dakota City, NE

402-987-3363

**[ssccardinals.org/schools/
dakota-city-elementary](http://ssccardinals.org/schools/dakota-city-elementary)**



E.N. Swett School

E.N. Swett School houses the district preschool program and four sections of kindergarten. Teachers and specialists provide students with a quality education in a positive and caring environment. The kindergarten curriculum includes the traditional core content areas: language arts, math, science and social studies. Students also receive instruction in art, music, P.E., guidance, library and technology. The preschool curriculum reinforces the Nebraska Early Learning Guidelines, which are based on research and evidence about child development and practices that result in the best outcomes for young children. Areas of focus include development in the following domains: social and emotional, health and physical, language and literacy, mathematics, science, and creative arts and are monitored through the GOLD assessment. Parent involvement is encouraged through opportunities to participate in classroom activities throughout the year and in our at home reading program.

2300 C St., South Sioux City, NE
402-494-3501 or 402-494-1727
ssccardinals.org/schools/en-swettelementary

Harney Elementary School

Rebuilt in the 1990s, Harney Elementary School has an enrollment of 340 students in grades K-5. The school, which features 65 total staff members, is one of only four schools in Nebraska to be named a 2006 No Child Left Behind Blue Ribbon School. Harney was honored for their accomplishments in closing the achievement gap and for their students who achieve at very high levels. School begins at 8:00 a.m. and ends at 3:05 p.m.

1001 Arbor Dr., South Sioux City, NE
402-494-1446
ssccardinals.org/schools/harney-elementary

Lewis and Clark Elementary

Lewis and Clark Elementary has 260 students from around the South Sioux area. The dual-section building has 12 rooms with 21 students per classroom. Along with academics, students participate in courses such as art, physical education, music and more. In addition to the teachers, Lewis and Clark Elementary currently has a counselor, two English as a second language teachers, two special education teachers, a library/technology teacher, two music teachers, two physical education teachers, a part-time health clerk and six para-educators. School for

Be Kind, Be Respectful, Be Better Every Day!



South Sioux City Community Schools

 @SSCCardinalNews

 fb.com/ssccardinals

www.ssccardinals.org

402-494-2425



students begins at 8:05 a.m. and ends at 3:05 p.m. In terms of activities for students, Lewis and Clark offers a wide variety similar to other schools in the area.

**801 Second Avenue, South Sioux City, NE
402-494-1917
ssccardinals.org/schools/
lewis-clarkelementary**

South Sioux City Middle School

Our middle school has over 800 students with 74 certified full-time staff and 24 support staff. We offer a number of courses and class offerings which include co-teaching and advanced coursework in reading and math. The schedule is uniquely designed to meet our students' needs. We have 90-minute block classes in math and language arts. Science, social studies, and exploratories run 45 minutes each. Every day, all of our students are engaged in two exploratory class periods and have a 30 minute intervention/enrichment period called WIN time, which stands for 'What I Need'. WIN allows students to seek individual help in subject areas they need more support or enrichment in. Our school's focus on academic improvement has led to growth in all content areas assessed on district and state assessments over the past 5 years. In addition, we have added Science Technology Engineering Math (STEM) and robotics courses in the last few years. The school offers fourteen activities for students outside of their normal classroom setting, including knowledge masters, student council, math counts, and theater allowing for anyone to be involved. In terms of team sports, we have football, cross country, basketball, volleyball, wrestling, track, and soccer for 7th and 8th graders. The normal school day at the middle school begins at 8:10 a.m. and ends at 3:25 p.m.

**Facebook: SSC Middle School Cardinals
Twitter: @SSC Middle School
3625 G St., South Sioux City, NE
402-494-3061
ssccardinals.org/schools/middle-school**



South Sioux City High School

South Sioux City High School is the only high school in South Sioux City. Featuring an enrollment of 1,212, the school has 120 full and part-time staff members for their 30-32 classrooms.

The school offers a wide spectrum of activities for their students. The Art Club, National Honors Society, band, choir, Quiz Bowl, School News, speech, Spanish club, yearbook, Mock Trial, cheerleading and Cardinal Pride club are just some of the activities available for all students outside of their normal classroom work.

Aside from classes such as English, math and science, students can take a number of different courses, including Advanced Placement classes, fine arts appreciation, accounting or journalism, just to name a few.

In terms of team sports, South Sioux offers everything including volleyball, basketball, football, tennis and wrestling.

School hours for students begin at 8:30a.m. and end at 3:25p.m. For updates and happenings follow on Twitter:

@SSC_CARDINALS OR @SSCActivities or visit the website at ssccardinals.org

**Facebook: SSC High School
Twitter: @SSC High School
3301 G St., South Sioux City, NE
402-494-2433
ssccardinals.org/schools/high-school**

Homer Community School District

The Homer Community School District provides a quality education for over 400 students in preschool through 12th grade on their spacious campus. Over 60 dedicated certified and non-certified professionals work to meet the unique needs of students daily. The district prides itself on providing an excellent educational experience with a small-town family feel.

For students seeking an education at a college level, Homer High School offers a number of classes depending upon students' interests. Everything from college English to advanced math, anatomy to business law and consumer economics to even mechanics and welding are offered. Like many schools, the Homer Community School District offers a number of activities for their students, either in clubs or athletics. From drama to cheerleading and Student Council,

there are many opportunities for students to develop their talents. Students can participate in a wide variety of athletics including volleyball, basketball, golf, track and football.

212 S. 3rd St., Homer, NE
402-698-2377 | homerknights.org



SIouxLAND
concrete company

South Sioux City, Nebraska

(402) 494-4248

Ready Mix Concrete

Ponca Public School District

Serving children since 1859, Ponca Public School has a Pre-K - 12 enrollment of 467 students and offers outstanding educational programs as well as a number of extracurricular opportunities, which are enjoyed by the entire community. Ponca Public School is a fully accredited, Pre-K - 12 Class III school district. The philosophy of the Ponca School District is to help each student develop to his or her fullest extent - mentally, socially, emotionally and physically - enabling them to take their place in society as well-adjusted, contributing members.

Jackson Elementary School

Jackson Elementary School holds Pre-K through second grade from Jackson and Ponca.

**223 N. John St., Jackson, NE
402-632-4276**

Ponca Elementary School

Holds 3rd – 6th Grade.

505 3rd St., Ponca, NE | 402-755-5700

Ponca High School

Holds 7th – 12th Grade.

**505 3rd St., Ponca, NE
402-755-5701 | poncaschool.org**

Emerson-Hubbard School District

Emerson-Hubbard Community School currently has an enrollment of 238 students from preschool to 12th grade with 27 teachers. Both the elementary and high school offer a safe and enjoyable environment for students in the Emerson and Hubbard areas. Because of the small class sizes, students are able to receive more individual attention from their teachers than other, larger schools. This allows teachers to better know their students, both in an academic setting and in their own personal lives. The school offers a number of activities: everything from yearbook, speech, drama, band, chorus, the Science Club Future

Farmers of America, P2T- Career Academy, and Future Business Leaders of America are offered for students. On the athletic side of the school, sports from volleyball and track and field, to basketball and eight-man football are offered. School days begin at 8:15 a.m. and end at 3:41 p.m.

**109 West 3rd St., Emerson, NE
402-695-2636
emersonhubbardschools.org**

Catholic Schools

St. Michael's School

St. Michael's is a private preschool through 8th grade school in South Sioux City, NE. The Catholic school has 168 students with 13 faculty members and 4 para-professionals. The school, which also accepts non-Catholic children, also offers 3 and 4 year old preschool full and half day programs. The faith-based school offers a supervised before school beginning at 7:30 a.m. and after school program from 3:16-6p.m. The School hours are 8:00 a.m. to 3:15 p.m. Scholarship opportunities are available.

**1315 First Avenue, South Sioux City, NE
402-494-1526 | stmichaelssc.com**

Bishop Heelan Catholic Schools

Heelan High opened a new \$15 million Fine Arts Building in fall, 2014 for its enrollment of 520 students in grades 9-12. Located north of downtown Sioux City, the high school is easily accessed by students coming from Nebraska and South Dakota as well as Sioux City. Bishop Heelan has a rich tradition of excellence in academics, fine arts, athletics and service. Over 90 percent of Heelan graduates go on to college. Other schools in the Bishop Heelan school system enroll students in preschool - 8th grade: Mater Dei, Holy Cross and Sacred Heart schools.

**1021 Douglas St., Sioux City, IA
712-252-0573 | bishopheelan.org**

High School Sports

South Sioux City High School - "Home of the Cardinals"



South Sioux City High School, home of the Cardinals and Lady Cardinals, has a wide spectrum of sports available for both boys and girls. In the fall, football, boys and girls cross-country, volleyball, boys tennis, girls golf and softball are offered for students. In the winter, boys and girls basketball, boys and girls swimming and wrestling are the focus of everyone's attention. During the spring, boys and girls track and field, boys and girls soccer, girls tennis, baseball and boys golf are offered. South Sioux City is the home of many Nebraska Class B State Championships including: · Girls Basketball, Girls Cross Country, Boys Basketball and Boys Soccer. More information about our Cardinal Family may be found at our website at ssccardinals.org.

**South Sioux City High School, 3301 G St., South Sioux City
NE 402-494-2433 | tom.luxford@ssccards.org**



Emerson-Hubbard Pirates

The Pirates and Lady Pirates of Emerson-Hubbard High School make sure to offer enough competitive sports for all of their young student-athletes throughout the year. During the beginning of the year in the fall, football and volleyball are offered to make the earlier months fun and exciting. In the winter, the boys and girls of Emerson-Hubbard hit the hard courts for basketball. In the spring, when the weather is less harsh, the Pirates and Lady Pirates get a chance to run outdoors for track and field and play baseball. During the summer, both boys and girls get a chance to get a little

dirty on the baseball and softball diamonds through Summer Rec.

**Emerson-Hubbard High School, 1503 Dakota St., Emerson, NE
402-695-2636 | emersonhubbardschools.org**



Homer Knights

The Knights and Lady Knights of Homer High School offer a number of sports for all of their student-athletes. As autumn begins in the fall, the Knights and Lady Knights enjoy playing football and volleyball with head coaches Shawn Spurrell on the football gridiron and Stacie Johnson, a former alum and player, as the Lady Knights' volleyball coach. In the winter, boys and girls basketball are the focus of sports. During the spring, boys and girls track and field are offered, as well as boys golf. During the summer, girls in the area enjoy softball, playing against other Dakota County teams like Ponca, Emerson-Hubbard and Homer High School.

**Homer High School, 212 S. 3rd St., Homer, NE
402-698-2377 | homerknights.org**

Healthcare



Hospitals

The Siouxland area is fortunate in having an excellent availability of medical facilities for serving the health needs of the community and is well-recognized regionally and nationally for its facilities. Siouxland is home to quality health services including two hospitals.

UnityPoint Health-St. Luke's Hospital

As part of UnityPoint Health – Sioux City which includes UnityPoint Clinic and UnityPoint at Home, UnityPoint Health – St. Luke's offers a vast network of doctors, nurses and other health care professionals committed to coordinating care to meet the individual needs of our patients. UnityPoint Health – St. Luke's is one of the region's most patient and family-centered hospitals, delivering innovative care to communities in the tri-state area including Iowa, Nebraska and South Dakota. St. Luke's treats more than 101,600 patients annually, coordinating care from the doctor's office to the hospital and back home through St. Luke's, UnityPoint Clinic and UnityPoint at Home.

Using a team approach, the physicians and specialists of UnityPoint Clinic are committed to helping patients manage their health. Through more than 64,400 patient visits annually and with services including family practice, general surgery,

pulmonary and critical care, occupational medicine, and cardiology, UnityPoint Clinic is focused on getting patients healthy sooner and keeping them healthy.

For patients who need additional care at home, UnityPoint at Home provides services and equipment including nursing care, infusion therapy, respiratory therapy, rehabilitation, home medical equipment and supplies. The UnityPoint at Home team, which includes registered nurses certified in chronic care management, work with each patient to find the right home care solution based on their unique needs.

Through our mission to improve the health of the people and the communities we serve, UnityPoint Health – St. Luke's, UnityPoint Clinic and UnityPoint at Home work together to ensure the best outcome for every patient every time.

**2720 Stone Park Blvd., Sioux City, IA
712-279-3500 | unitypoint.org/siouxcity**



You've got places to go in life.

At UnityPoint Health, we want to make it easier to go from getting well to living well – so you can stay all systems go for wherever your journeys take you.

People are amazing. We're here to help keep them that way.



UnityPoint Health

Know how much *you matter* to this world.



MercyOne Siouxland Medical Center

Living the traditions, visions and values of the Sisters of Mercy, Mercy Medical Center-Sioux City is a regional medical center that meets the needs of residents in a 33-county area of western Iowa, eastern Nebraska and southeastern South Dakota.

In addition to the main hospital in Sioux City, Mercy-Sioux City owns rural hospitals in Primghar, Iowa, and Oakland, Nebraska, manages hospitals in Pender, Nebraska and Hawarden, Iowa, and operates a primary care clinic network, specialty care clinics and home health services. Mercy also partners with other community healthcare providers to sponsor a regional cancer center, paramedic services,

hospice services, a freestanding surgery center and a variety of other health services.

Mercy-Sioux City is also home to the only Level II Trauma Center in western Iowa, and provides a vital, lifesaving link to rural areas via Mercy Air Care, the hospital's helicopter ambulance service.

Mercy Medical Center-Sioux City is a member of Trinity Health, Livonia, Michigan. As Mercy continues to position itself as Siouxland's most trusted health partner for life, it will always keep in focus its central mission - providing extraordinary care for patients in the communities it serves.

801 5th St., Sioux City, IA
712-279-2010 | mercysiouxcity.com

Medical Clinic Services

Siouxland Community Health of Nebraska

Siouxland Community Health Center was founded in 1992 as a joint effort of local hospitals St. Luke's Regional Medical Center and Mercy Medical Center (then Marian Health Center) to respond to the unmet health care needs among the underserved in the community. SCHC has grown to become a comprehensive home for quality health care services that is designed to ensure that every need is met for all that walk through our doors.

They offer care that is culturally competent and matched to patient needs, including direct interpretation services in multiple languages including Spanish, Vietnamese, French, Somali, and Oromo. Their partnership with various agencies throughout the community, as well as multiple service sites is part of our patient centered approach.

3410 Futures Drive, South Sioux City, NE
402-412-7242 | slandchc.com

Family Health Care of Siouxland

At Family Health Care of Siouxland, their goal is to help patients live strong, healthy lives through superior clinical expertise, state-of-the-art technology, personal attention and compassionate care.

Their team of certified physicians and support staff is committed to educating and empowering our patients. They acknowledge that while they offer years of medical experience and leading-edge equipment, only you are the expert on what your health looks and feels like to you. Working together, they can create a complete wellness plan that meets your medical and personal needs. Their seven Siouxland area clinics offer medical services for every stage of life, from prenatal care to adolescents, adult and geriatric medicine.

Urgent Care – Family Health

Mon. - Fri. 6:00 p.m. - 9:00 p.m.
 Sat. - Sun. 10:00 a.m. - 4:00 p.m.
 Closed Holidays

3250 Plaza Drive, South Sioux City, NE
402-412-4220 | fhcsl.com

Tri-State Physicians and Physical Therapy Clinic

State of the art chiropractic, medical and physical therapy facility and discover the true wellness lifestyle! Chiropractic care covers a wide range of issues including neck pain, back pain, numbness, sciatica, sports and repetitive motion injuries, and much more! Dr. Pat and Tim Luse and Dr. Scott Patrick are members of Great Doctors of Chiropractic and have helped many in

the Sioux City area experience natural healing without surgery or drugs!

They educate about the importance of a healthy lifestyle, including exercise, diet, and nutrition. They want to be your complete health and wellness provider in Sioux City, the Tri-State region, and vicinity.

**3900 Dakota Ave., South Sioux City, NE
402-412-7242 | tristatephysicians.com**

Mental Health Services

Heartland Counseling Services

Heartland Counseling Services, Inc. is a community mental health center for Nebraska and serves 11 of 22 counties in Region 4, which include Boyd, Brown, Burt, Cherry, Dakota, Dixon, Holt, Keya Paha, Rock, Thurston, and Wayne. This allows Nebraska residents who have no health insurance are able to utilize a sliding scale for payment in order to gain mental health and substance abuse services.

They provide an array of services that include, but not limited to mental health and substance abuse evaluations and counseling,

24/7 crisis response team, intensive outpatient program for adolescents and adults, tele-psychiatry and medication management with Richard Young Outpatient Clinic, community support services for adults, day rehabilitation programs in O'Neill and South Sioux City called The Life Center, group counseling at Dakota County Jail, DUI/OWI classes, anger management classes, and prevention classes at the South Sioux City Community Schools.

**3410 Futures Drive, South Sioux City, NE
402-412-7242
heartlandcounselingservices.org**



SOUTH SIOUX CITY
3250 Plaza Drive
South Sioux City, NE 68776
402-412-4220

Dr. Melissa Austreim
Dr. Michael Brenner
Dr. Michael Hattan
Deb Henry, PA-C
Molly Schooley, PA-C
Dr. Thomas Wentz
Michelle Doty, ARNP
Patti Eriksen, R.N.- Certified
Diabetic Instructor



NORTHSIDE
4230 Hamilton Blvd.
Sioux City, IA 51104

SOUTH SIOUX CITY
3250 Plaza Drive
South Sioux City, NE 68776

MORNINGSIDE
4545 Sergeant Road
Sioux City, IA 51106

Visit our website: www.fhcs.com

Colleges & Universities



Adult Basic Education/GED/ESL

The Adult Education Department at Northeast Community College offers the following services:

- Instruction in basic skills, such as reading, writing, and mathematics (ABE)
- Preparation and testing for a high school diploma (GED®)
- English language instruction (ESL)
- Preparation for the Law Enforcement Academy Entrance Test
- Preparation for citizenship testing

The program is free to anyone 16 years of age or older and not enrolled in a secondary school. Students are requested to attend an orientation session to register and take diagnostic tests to determine what skills are needed and develop a learning plan.

South Sioux City Extended Campus
1001 College Way, South Sioux City, NE.
402-241-6400
northeast.edu/Adult-Education



Briar Cliff University logo

Briar Cliff University

Offering a liberal arts education in the Catholic Franciscan tradition of service and caring, Briar Cliff shapes more than students' resumes. The University also shapes a student's character. With over 30 undergraduate degree programs, online degree completion programs and graduate degrees, Briar Cliff supports students in all stages of higher education.

3303 Rebecca St., Sioux City, IA
712-279-5200 | briarcliff.edu

Northeast Community College

The South Sioux City Extended Campus is located at 1001 College Way, South Sioux City, NE. This location offers students the opportunity to gain skills to start a career or build a strong foundation for a bachelor's degree. Our degree programs and short-term technical training are focused on skills needed for high demand, local careers in health, industrial, transportation, agriculture-related and business environments.

You have the opportunity to learn at one of the nation's top 10 community colleges. And 99% of Northeast graduates continue their education or find a job! We also partner with your business or organization to keep it strong and competitive with customized business and industry training programs.

Northeast Community College offers classes and services available on-site, online, or in a combination of delivery methods. We provide support services to help you succeed with your studies and your career after college.

Success starts here!

College Center
1001 College Way, South Sioux City, NE.
402- 241-6400 | northeast.edu

Little Priest Tribal College

The Winnebago Tribe of Nebraska chartered Little Priest Tribal College (LPTC) in May 1996. Its major focus is to provide a two-year associate degree, and prepare students to transfer and successfully complete a major at a four-year institution. The Sioux City campus offers classes through distance education and online classes. The colleges Warriors Athletic program is also housed on site.

**Ho Chunk Centre, 600 4th St.
Suite 229, Sioux City, IA 51101
712-224-0113 | littlepriest.edu**

Morningside College

The mission of Morningside College, founded in 1894, is to cultivate a passion for lifelong learning and dedication to ethical leadership and civic responsibility. Morningside sponsors numerous events, including concerts, lecture series, art exhibits and more - most open to the public at no charge. The 68-acre campus is listed on the National Register of Historic Places.

**1501 Morningside Avenue, Sioux City, IA
712-274-5000 or 800-831-0806
morningside.edu**

Nebraska Indian Community College

This comprehensive Tribal College values service through high quality education and is distinctive in serving the diverse people of the Umonhon (Omaha) and Isanti (Santee Dakota) Nations. It features an enriched living and learning environment and year-round operation committed to multicultural learning. Institutional programs value and cultivate the creative and productive talents of learners, faculty, and staff, and seek ways to contribute to the self-sufficiency of the Nations served, the well being of our communities, and the quality of life and development of its learners, faculty, and service areas.



Nebraska Indian Community College - Santee, NE Branch



FiberComm

We Connect People!

**Internet
Phone
Data Networking**

712-224-2020 | fibercomm.net

St. Luke's College

Providing high quality, health system-based education to individuals who desire to become competent and compassionate health care providers. Students can specialize in several areas such as Bachelor of Science in Nursing, Bachelor of Health Science, Associate of Science in Nursing, Radiologic Technology and Respiratory Care, Advance Radiology Specialties, Certificate in Medical Laboratory Science and Phlebotomy

2800 Pierce St, Suite 410, Sioux City, IA 712-279-3149 | stlukescollege.edu

Wayne State College

Whether your goal is to earn a bachelor's or master's degree, Wayne State College at South Sioux City offers programs just for you at a convenient location, delivered by the region's most affordable four-year institution. With state-of-the-art classrooms and computer labs, as well as one-on-one attention from our faculty, WSC is committed to quality. And if your desire is to stay in the Siouxland area for an affordable and accessible education, consider our programs at South Sioux City. We partner with Northeast Community College to offer bachelor's degree programs in business, education, and counseling. By choosing to complete your degree in South Sioux, you'll get outstanding results at an affordable price. During the past 100 years, Wayne State has developed a strong reputation as a leader in the field of teacher preparation. In fact, 1 out of 10 educators in the state has at least one degree from Wayne State. And our business and counseling graduates are among the more than 99 percent of recent Wayne State graduates who are either employed or in graduate school.

1001 College Way, South Sioux City, NE 402-241-6400 | wsc.edu/south-sioux-city

The College Center-Housing Northeast Comm. College and Wayne State



Western Iowa Tech Community College

As a comprehensive community college, our mission is to provide quality education and to economically enhance the communities we serve. WITCC offers a wide range of programs including nursing, automotive, carpentry, computer networking, welding and more.

4647 Stone Avenue, Sioux City, IA 800-352-4649 | witcc.com



Briar Cliff University launched a new Doctor of Physical Therapy program in July 2016. The doctoral program is located at the renovated "Briar Cliff at Mayfair" campus, across from Southern Hills Mall in Sioux City.



St. Luke's College Students in the classroom

Wayne State College



**OUR FOCUS
IS YOUR
FUTURE**

Students choose Wayne State College for a variety of reasons – our strong academics, personal attention, smaller campus, affordable tuition, and caring faculty. All of these make the four years students spend on campus memorable.

But what about after graduation? The proof is in the numbers. Of the Wayne State alumni who have graduated in the past year, 100% were either employed or attending graduate school six months after graduation.

Our professors are dedicated to giving students the in-class instruction and mentoring they need to prepare for their professional career path.



Schedule your visit today at www.wsc.edu/visit



Nearly one-third of Wayne State College students graduate with **zero student loan debt.**

Institutional data

130+ programs of study

Popular Majors

Biology
Business Administration
Construction Management
Criminal Justice
Elementary Education
Human Service Counseling
Industrial Technology Education
Pre-Professional Health
Special Education



Recent graduates employed or in graduate school

based on the graduate survey

Let's Connect!



WAYNE STATE COLLEGE

1111 MAIN STREET • WAYNE, NE 68787
402-375-7234 • 1-866-WSC-CATS

Wayne State College is a member of the Nebraska State College System

Visit

South Sioux City, Nebraska



Where Quality of Life is a
Cardinal Rule
southsiouxcity.org