

Can't connect? Need help?



**DO NOT RETURN THIS
PRODUCT TO THE STORE**

Call 1-800-757-1440
Mon-Fri 9:00 a.m. - 5:00 p.m. EST (US)
or email us at
support@atomiusa.com

Wi-Fi

atomi™

Smart Garage Door Opener

User Manual



atomi
Smart

Download Free APP

Watch Video

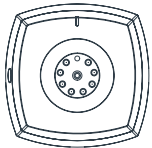
Open your smartphone camera
and point it at the QR Code

Date Code: 10/19

Thank you for purchasing the atomi Smart Garage Door Opener

Control your garage door from your phone anytime, anywhere! With the Smart Garage Door Opener you can also use Alexa and Google Voice Assistant to open and close your garage door on any Wi-Fi enabled smartphone/tablet in the atomi smart opp (available for Android or iOS).

Inside the box you'll find:



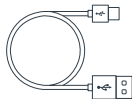
Smart Garage Door Opener



Smart Wall Adaptor



User Manual



15ft Micro-USB Cable

Specifications

Smart Wall Adaptor

Input: 100-240Vac 50/60Hz 0.15A max
Output: 5Vdc/1A

Smart Garage Door Opener

Input: 5Vdc/1A

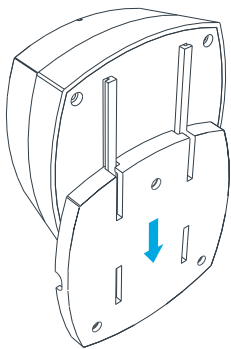
Before you begin

1. Know your Wi-Fi network and password.
2. Make sure your mobile device is running:
 - iPhone® 8 or higher and iOS® 8 or higher.
Any previous iPhone® or iOS® may experience slower connections.
 - Android™ 4.1x or higher.
3. Make sure you're connected to a 2.4GHz Wi-Fi network (atomi smart app can't connect to 5GHz networks).

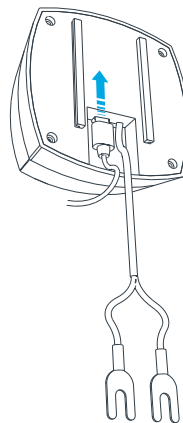
Compatibility

The atomi Smart Garage Door Opener can be installed to control most garage door openers. Visit atomismart.com/compatible-garage to be sure yours qualifies.

Step 1: Set Up

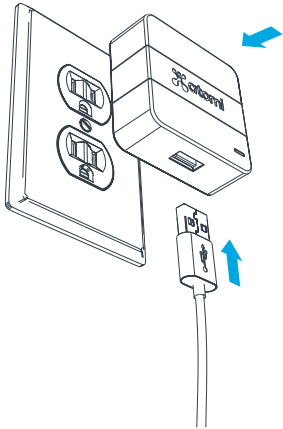


1. Bring the Smart Garage Door Opener close to your router
2. Slide and remove the backing of the Smart Garage Door Opener

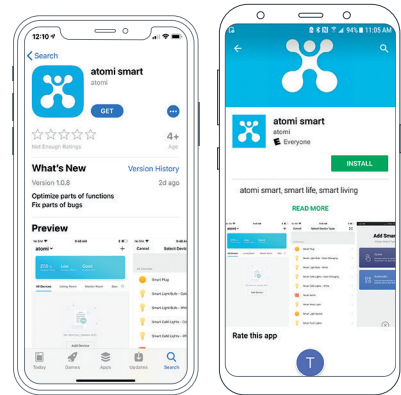


3. Plug the micro-USB cable into the Smart Garage Door Opener and slide the backing back on.

Step 2: Download App

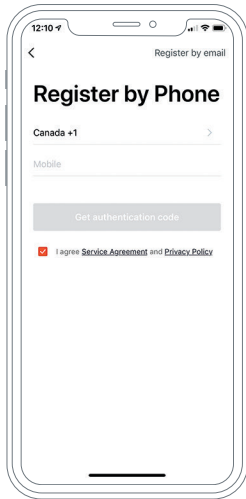


4. Plug the USB into the Smart Wall Adaptor and plug the Smart Wall Adaptor into your wall outlet.

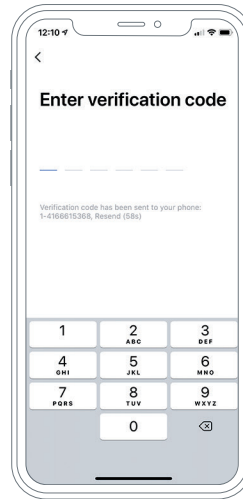


Download the atomi smart app from the App Store or Google Play.

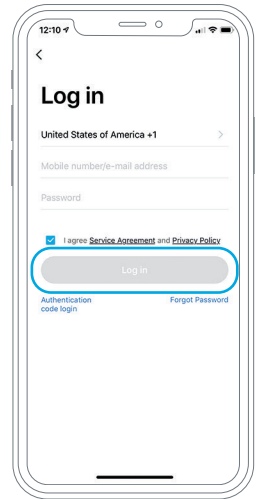
Step 3: Register



Enter your mobile phone number or email address.

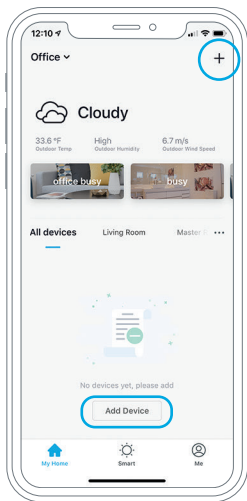


Enter the verification code and create a password.

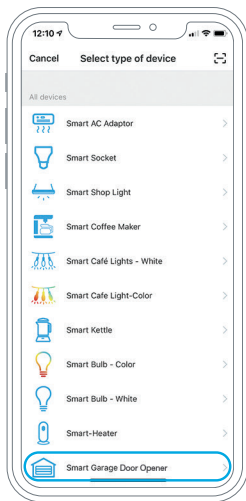


Log into the app.

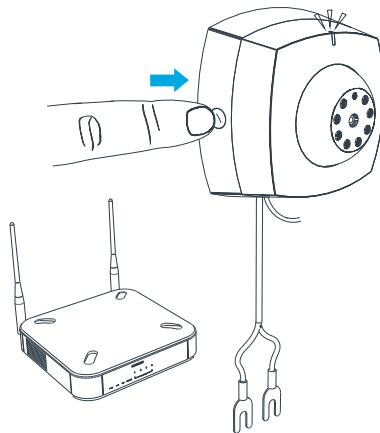
Step 4: Add Device



Select "Add Device" or click (+) at the top right corner of the Devices Screen.

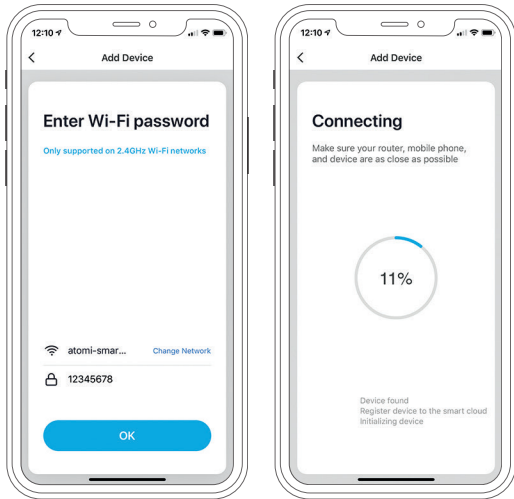


Choose "Smart Garage Door Opener" from the Device list.



Hold the power button on the side of your Smart Garage Door Opener for five seconds until the indicator light is flashing rapidly. Then press "Continue".

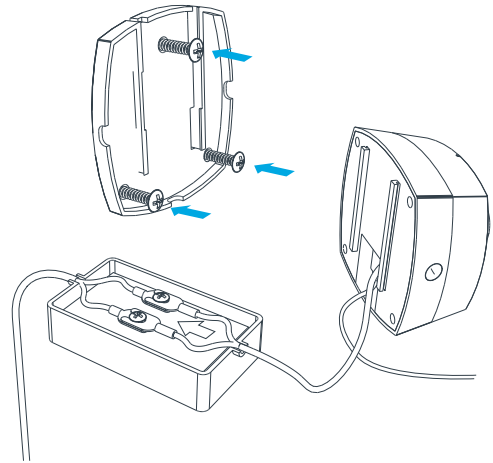
Step 5: Connect



Enter your Wi-Fi network and password.

The atomi smart app will connect your device.

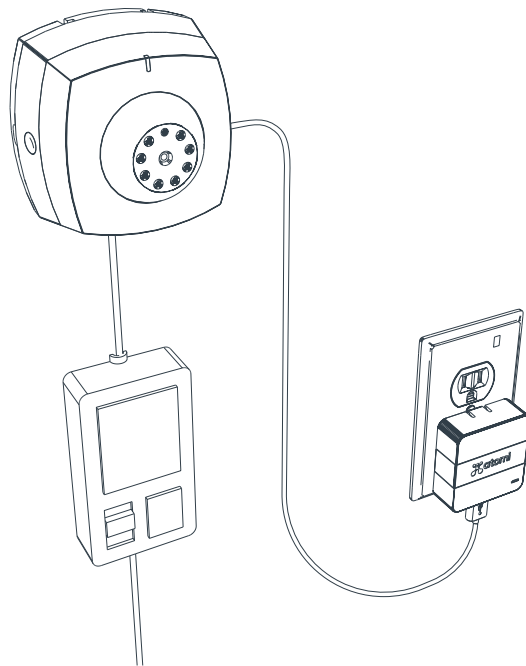
Step 6: Installation



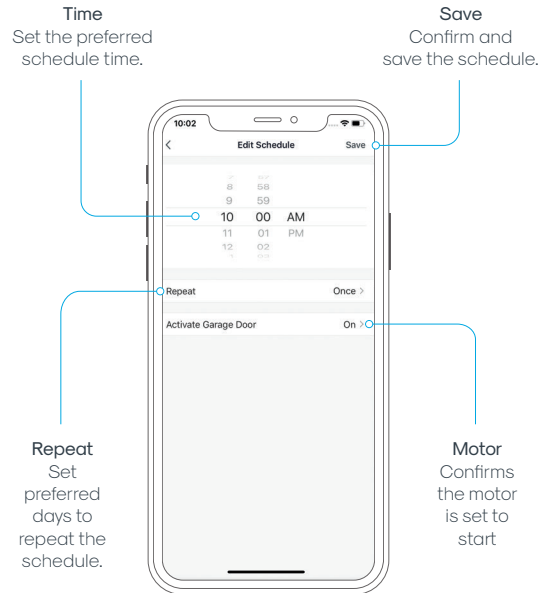
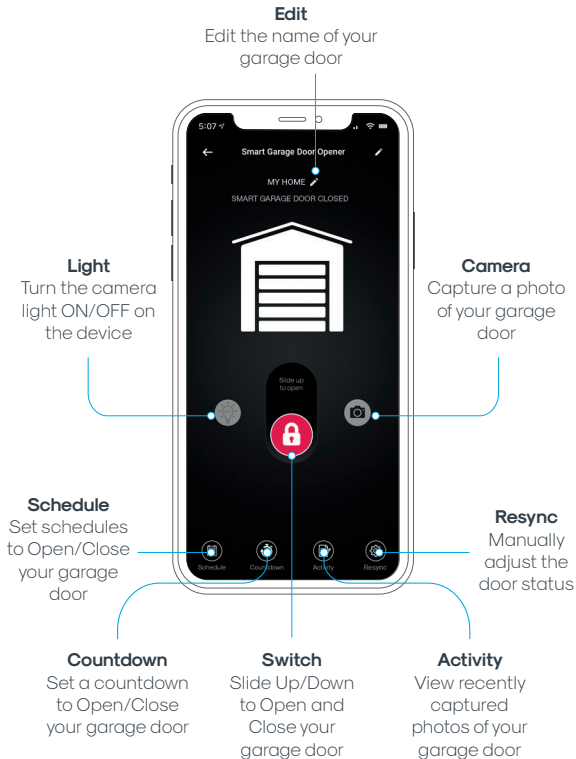
1. Now that you have initiated a Wi-Fi connection, unplug the Smart Power Adaptor from the wall outlet and bring the Smart Garage Door Opener to your garage.
2. Locate your existing garage door opener panel and loosen it from the wall. Your garage door opener panel should now be hanging and you should be able to see the module at the back of it.

3. Connect the white and red wires running from the Smart Garage Door Opener to the corresponding screw on the back of your garage door opener panel i.e white to white and red to red
4. Secure the garage door opener panel back to the wall and position your Smart Garage Door Opener right above it.
5. Use the screws included in your product packaging to secure the Smart Garage Door Opener's backing onto the wall.
6. Plug the Smart Power Adaptor into your desired wall outlet.
7. Adjust and position the camera on your Smart Garage Door Opener and test the view on the atomi smart app to make sure you are happy with the facing angle.
8. Testing the device:
 - a) Open the app, choose "Smart Garage Door Opener" and press the light icon button. Check if the device light is turning ON/OFF.
 - b) Press the camera icon button. You should receive a notification with the captured photo.
 - c) Slide up the switch to open your garage door. Check if your garage door is opening.
 - d) Slide down the switch to close your garage door. Check if your garage door is closing.

If you have problems with any of these steps. see our FAQs section on this guide or visit atomismart.com for more information.

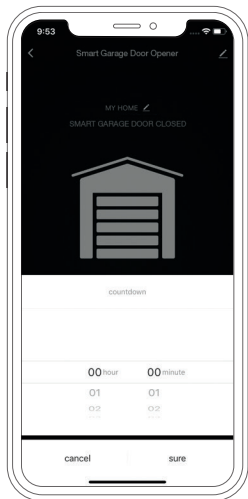


Schedule



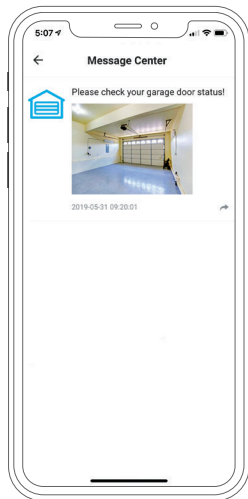
You can set up your Smart Garage Door Opener to open and close at specific times on specific days of the week.

Countdown



Set a countdown to automatically open and close your garage door

Activity



View recently captured photos of your garage door

Compatibility

The following models are compatible with the atomi Smart Garage Door Opener.

If you have any questions or concerns please email support@atomiusa.com

4Ddoors
GA103

AERF
DUAL 2H4 MN
POWER 1R0

AHOUSE
EM SWING GATE
RAM 100

Aiphone
JO-1FD

ALEKO
13XX
22XX

AC1400
AR1400
AR900
AS 1300
AS 450
AS 650
AS 900
GateGuard 1300
GateGuard 1700
GateGuard 450
GateGuard 650
GateGuard 850
GateGuard 900

ALL-O-MATIC
SL-100
SL-100DC
SL-150
SL-150DC
SL-150DC-50
SL-45DC
SL-90DC
SW-300
SW-350

TORO 24
AV
AV1

ALLSTAR
3000
3500
3500-P
6000
6500
6500-P
AC9000 Series
IIA(Type II)
J3500
J6500
GS4000
MVP

Alulux
Benny 3.0

Alutech
Levigato (LG Series)

Ansa
RS-1
Thermaglide

APC
CB-SGX12
CBSW-24

APERTO
550L
868L
868 LX
Baseline+
Apollo
1050
1500
1550ETL

1650
1650ETL
3500ETL
3600ETL
633 Control Board
634 Control Board
635
636
7000ETL
835
836

Aprimatic
ALZO 55 with Control board
T230
EM51 with control board
T3EC-T3SC

ASA
asa300
asa400
K50 Control Board

Assa Abloy
840C-50
841C-35
841C-50
850C-50
851C-35
851C-50

Auto-Over
DC850

Automat Easy
SCOR 800

Automatic Remote Access
PY500AC

Automatic Technology

DCB-05
 DCB-05V2
 GDO-11v1 Ero
 GDO-11v3
 GDO-2
 GDO-2v6
 GDO-2v7
 GDO-4
 GDO-6
 GDO-6v2
 GDO-6v3
 GDO-6v4
 GDO-7v2
 GDO-8
 GDO-8v3
 GDO-9
 GDO-9 Dynamo
 GDO-9v2
 GDO-9v2 Gen2
 NES-24v1
 NES-24v3 NeoSlider
 Securilift
 SGO1v3

AVANTI

Garage Door
 SDO-21
 T-Series
 T-Series-v3

AVIDSEN

1600
 350
 Anthea
 EVER212
 Stryka

B&D

CAD4
 CADP-Diamond series (older model)
 Control-A-Door Diamond PD
 Control-A-Door P Diamond
 Control-A-Door S
 Firmamatic
 MPC-2
 ROD-1v2PD
 ROD-1v4
 Roll-A-Pro
 SDO-1v2 P
 SDO-2v2
 SDO-2v2 ADV

SDO-3V1 CADS
 SDO-3V2 CADS
 SDO-4V1
 Tilt-A-Motic
 TRG-306

Baisheng

PKD2.3K

BENINCA

BRAINY 230
 BRAINY 24
 BULL 10
 BULL 424
 BULL 5M
 BULL 80M
 CPB1024ESA
 CPB24ESA
 CPBULL-RI Control unit
 CRCORE
 CRJ4 ESA
 CP_J3 Control Unit
 DA.93AM
 DU350
 Heady
 JM3
 JM3 ESA
 MS4
 THINK Control Unit
 JM4
 MS4

BERNAL

S101-60
 S101-80
 G402-120
 Rallye C

Berner

GA203
 GA70
 GA80

BFT

Alcor N
 Argo
 ARIES
 ARIES P
 Botticelli
 Deimos
 DEIMOS ULTRABT A 600
 DeimosBT
 DEIMOSBT A 400

DEIMOSBT A 600

DEIMOS ULTRABT A 400
 ECOSOL
 ELBA BU
 ELI250BT
 EQS
 EQS 120
 IGEABT(Thalia P Control Panel)
 KustosUltraBTA
 leoro(Leo-D-Ma control panel)
 LEO B CBB3 120 F04
 LEO B CBB3 230 L04
 LEO B CBB3 120 F02
 LEO B CBB3 230 L02
 LIBRA-UL-R
 Phobos BT and NT NL
 Phobos N L BT
 Rigel4
 Rigel5
 Tir 120
 Tir 60
 VIRGO
 ZARA BTL2

Biltek

sil600acl

BOSH

Proflift

BOSS

bol5
 bol6
 BOL4
 FORZA

BYAN

G2M Control Board

BYOU

BEAUTY

CAB

DUMPER 10
 DUMPER 7

CAME

BK1200
 BK1800
 BK2200
 BK800
 BKE1200

BKE1800

BKE2200
 BX241
 BX243
 ZA3N
 ZA4
 ZL-J24
 ZM3E
 ZM3EC

CARDALE

DC650N
 DC650T
 DC68S

CARDIN

sil324ebst

Centurion

Avanti
 D2 Turbo
 D5 EVO

Challenger

CH-1000

Chamberlain

1270
 1280
 1280R
 1345M
 1346M
 1355M
 1356M
 2110
 2200C
 2220
 2220-267
 2265
 2265-267
 248730
 248735S
 248739
 248754
 2500B
 2595
 3245
 3245CM
 3245M
 3255
 3255-2CM
 3255-2
 3255-2M

3255CM
 3255M
 3265CM
 3265CM-267
 3280
 3280-267
 3575
 3595S
 3850
 3850-267
 4200C-2
 4200C
 7902
 7902K
 9902

AccessMaster M3100M
 AccessMaster M350M
 AccessMaster M385M

B500
 B503
 B510
 B550
 B552

B970

C203

C205

C400

C410

CG40

CG40CDM

CG42CDM

CR600

CR625EVO

CR675EVO

CS100EVO

CS110MYQ

CS60EVO

HC300-433

HD200D

HD200DM

HD400D

HD600

HD950WF

LM60XX

LM80XX

LW1000WF

LW2000

LW260C

LLW3000

LLW9000WF

MM385

MM385M

MMMiracle-ONE

MMJ - MH- HMJ

MML 1000EV
 MML 510EV
 MML2000
 MML700EV
 MMotorlift 5500
 MMotorlift 1000
 MMotorlift 2000
 MMotorlift 4000
 MMotorlift 5000
 MMotorlift 700
 MMotorLift ML500
 MMotorLift ML510
 MMotorLift ML700
 MMotorLift ML750
 MMotorLift ML850
 MMSLDCBB3
 MMSWDCBB
 PPD210
 PPD212D
 PPD300
 PPD510
 PPD512
 PPD610D
 PPD612D
 PPD752KDS
 PPD758DS
 PPD758KDS
 RRobo Swing R900
 SSentex Crown Jewel
 TThe Robo slide
 TTPD10-05
 WWD822K
 WWD832K
 WWD832KEV
 WWD832KEVG
 WWhisper Drive HD600D
 WWhisper Drive 248739
 WWhisper Drive 248739M
 WWhisper Drive 248754
 WWhisper Drive 459950
 WWhisper Drive 547445
 WWhisper Drive 940CD
 WWhisper Drive HD600
 WWhisper Drive HDB000
 WWhisper Drive Plus
 WWhisper Drive WD822K
 WWhisper Drive HD900D
 WWhisper Drive WD832KD
 WWhisper Drive 8200
 WWhisper Drive 9200
 PPowerDrive HD200D
 PPowerDrive HD400D

PPowerDrive LW2000
PPowerDrive LW3000
PPowerDrive PD210
PPowerDrive PD212D
PPowerDrive PD610D
PPowerDrive PD612D
PPowerDrive PD752D
PPowerDrive PD752KLD

Comfort

260
270
280

Commax

DP-2HP

CRAFTSMAN

13953918D
139-53985
139.18076
139.18086
139.18096
139.18458D
139.18585D
139.18586D
139.18675
139.18676
139.18686
139.18696
139.18803
139.18805
139.18814
139.18830
139.18850
139.18851
139.18865
139.18866
139.18875
139.18876
139.18975
139.53638SRT
139.53662SRT
139.53675SRT
139.53681B
139.53910
139.53910D
139.53914
139.53919D
139.53920D
139.53924
139.53954
139.53961

13953961SRT
139.53962SRT1
139.53964SRT
139.53974
139.53985D
139.53990
139.53990D
139.53992
139.53992D
139.54915
139.54918
139.54931
139.54985
139.54990
139.653000
13918054
13918056
13918058
13918059
13918060
13918405D
13918451D
13918452D
13918458DM
13918463D
13918470D
13918473D
13918489D
13918555
13918654
13918656
13918658
13918659
13918660
13918673
13918674
13918887
13918897
13918973
13918974
13953315SR
13953335SRT3
13953415SR
13953525SRT
13953535SRT1
1395353834SRT3
13953615SR
13953627SRT
13953628SRT
13953636SRT
13953640SRT
13953641SRT
13953644SRT

13953645SRT3
13953646SRT2
13953647SRT1
1395364812
1395364848SRT2
13953650SRT
13953660SRT1
13953661SRT3
13953662SRT2
13953670SRT1
13953671SRT3
13953672SRT3
13953673SRT3
13953674SRT3
13953675SRT2
13953677SRT3
13953699SR
13953834SRT3
13953901DM
13953903DM
13953905DM
13953915D
13953916D
13953918D
13953918D
13953930D
13953930DM
13953961
13953961SRT
13953962SRT
13953962SRT1
13953963SRT
13953964SRT
13953974
13953974SRT
13953975SRT
13953975SRT1
13953976
13953976SRT
13953977SRT
13953978
13953978SRT
13953978SRT1
13953982SRT
1395398511
13953985DM
13953990D
13953993D
13953995SRT
13954930
20057933
75th Anniversary-Model
139.53991

CRAWFORD

Ultra Excellent
Ultra S
ECS 930A
ECS 940A
ECS 950
Magic 1000
Magic 600
Ultra

DASPI

MAX

Davidson

Portautomatik N600-240

DC MOTO

GFM925AL

DEA

203RR-Control Panel-
212E-Control Panel-

DIMOEL

Corredera 400
Kit NewROTOR

Diplomat

CD550

DITEC

CROSS3E
CS12E (for NEOS)
CS12M (for NEOS)
D2H
E1 (for 230V AC Motors)
E1A (for 230V AC Motors)
E1A (for CROSS)
E1A (for Dod)
ETHBOX
E1T (for CROSS 30)
E1T (for Dod)
E2 (for CUBIC)
E2H Control Board
EL31R (for Qik)
EL34 (for Qik)
Entremot E1T (for 400V
Motors)
Entremot E2 (for 230V AC
Motors)
GLOBE
ION
LCU30H (for 24V DC Motors)

LCU30H (for ARC)
LCU30H (for Facil)
LCU30H (for PWR)
LCU40H (for 24V DC Motors)
LCU40H (for ARC)
LCU40H (for CUBIC)
LCU40H (for Dor)
LCU40H (for Facil)
LCU40H (for PWR)
LOGIC M (for CROSS)
LOGIC M (for CUBIC)
LOGICM (for 230V AC Motors)
NEOS
NEOS+
obbi 3bh
TOP603H
TOP903H
VIVA4H
VIVA4H

DMIL

EVOLUTION

Dominator

GDO-11v1
GDO11v3

DOORHAN

SE-500
SE-500PRO
SE-DIY-500

DoorKing

1150
11503
11504
11802 Access Plus
11808 Access Plus
11810 Access Plus
11812 Access Plus
6605
6610
66524
99024
99100
99150
99200 (Series)
CCONTROL BOX:
6002-6003-6400
DDK4502
DDKS9150
DDKS6500
DDKS 6050

DDKS 6100
DDKS 9050
DDKS 9310

Doorworks

1200N
800N
RD2

DORENE

DR 3020
DR 3020HX
DRT 3520

DorGo

800

DOWNEE

NET230N

DTS

DTS 600
DTS 800

Ducati

EVO 700FC
EVO 700T
HC619 Solar
HC812-300
EVO 700

E.T. SYSTEMS

DC BLUE ADVANCED
DC Blue Digital

E8

E8-300

EAGLE

100 Series
1000
200 Series
2000
E7
Eagle-1

Eco Garage Doors

FS1000

EL SEMA

Eclipse MC

ELBE 909A 909B	FFacil (LCU30H) FFacil (LCU40H) GGLOBE IION LLEVO 3000 LLEVO 4000 MMAGIC 1000 MMAGIC 600 MMono NNEOS (CS12E) NNEOS (CS12M) NNEOS+ (CS12M) NNoblese 400 (Control X80) NNoblese 400 (Control X81) NNoblese 800 (Control X80) NNoblese 800 (Control X81) Ooobi 3bh PPerfekt PPWR (LCU30H) PPWR (LCU40H) QQik (EL31R) QQik (EL34) TTOP603H TTOP903H UULTRA UULTRA Excellent UUltra S UUniversal 400 VVIVAH VVIVAHJ WWS 1000 (control VD003) WWS 350 (control VD003) WWS 600 (control VD003)	EVOLOGE EVOSLIDE 5000	FAAC 400 401MP 414P 450MPS 455D 624BLD 740 741 C720 E024S E600 S800H (E024U Control Unit)	GDS 450 LI 630 LI Range 800	MODEL 2028 MODEL 2033 MODEL 2035 MODEL 2036 MODEL 2040C MODEL 2040L MODEL 2042 MODEL 2053 MODEL 2055 MODEL 2060 MODEL 2560 MODEL 2562 MODEL 2568 MODEL 3033 MODEL 3035 MODEL 3053 MODEL 3053. MODEL 3055 MODEL 3060 MODEL 3062 MODEL 3064 MODEL 4062 MODEL 4064 QuietLift (all models) MODEL 7033 MODEL 7035 MODEL 7053 MODEL 7055 MODEL CB1200 MODEL SC1200 MODEL 2040L MODEL 2053 MODEL 2562 MODEL 3024 PCG Series PMX-IC B Series PowerLift 900 PowerMax 1200 PowerMax 1500 PRO MAX PRO STEALTH ReliaG 650 ReliaG 850 SC1200 SC1500 Screw Drive SD8000 SD9000 SD9500 Series H Series IC Series IS Series ISL	SLentMax 750 TriloG 1200 TriloG 1500	GENIUS Brain 03 Brain 04 Brain 17 Brain 592	GFA TS 971	GHOST CONTROLS DEP2 kit DTP1 TDS2 TSS1XP	GIBIDI PASS 600 REGO	GLIDEROL Glidermatic GTS+	Grand-O-Matic GM1000 GM1200 GM800	Grifco eDrive +2.0	GSM I-Gate 20	GTO 1500 25 code Digital Keypad GP-SW050 GTO 3000XLS GTO PRO SW-2000XLS PRO 1000 SL-1000 SL-2000 SW4000XLS	Guardian 21230L 415 600SL 615 628
ELLARD Athena				GELB MCU-1M03												
EntranceDynamics EDSL450				Generic 3 Button Commercial Door 3 Button Commercial Door												
Entrematic 230V AC Motors (E1) DDod (E1A) NNEOS+ (CS12E) 330V AC Motors (E1A) 2230V AC Motors (Entrematic E2) 2230V AC Motors (LOGICM) 2230V AC Motors (LOGICM) 224V DC Motors (LCU30H) 224V DC Motors (LCU40H) 4400V Motors (Entrematic E1T) AAkku Plus AARC (LCU30H) AARC (LCU40H) CCROSS (E1A) CCROSS (LOGICM) CCROSS 30 (E1T) CCROSS 3E CCUBIC (E2) CCUBIC (LCU40H) CCUBIC (LOGICM) DD2H DDod (E1T) DDor (LCU40H) EE1HBOX EE2H Control Board EElegance 2500 (Control X50) EElegance 2500 (Control X51) EElegance 4000 (Control X50) EElegance 4000 (Control X51) EElegant 200 EElegant 400 (Control VD003) EEVO 400 EEVO 600 EEVO 800		ERREKA KM400	ESTATE SWING E-S 1100 E-S 1102 E-S 1600 E-S 1602	ERREKA KM400	ESTATE SWING E-S 1100 E-S 1102 E-S 1600 E-S 1602	ETDOOR ET-1000E ET-600E ET-800E	EUROMATIC LEVER 400 Control Board IDEAB-R									
			FADINI COMBI 740	FAS SLIDECH300BBUP		Force fs1000	FOREMATIC F350 F360	FORESSE F-350G F-350M	FORZA 1000	Garadar GaraMatic 10 GaraMatic 20	GARAGA CarGO 500e CarGO 700e	GARDALE DC-650n	GAREN Central G3	GATEKEEPER YG-5602		

HBopeners Easyswing	KENNER KNS 1500	11160 11210EM FS2 11215EM FS2 11220EM FS2 11225EM FS2 Star 300 Star 500	3312HM 3312HMC 3315WD 33220 33220-267 33240 33240M 33245 33245M 33255 33255-2M 33255M 33265 33265-267 33270 33280 33280M-267 33280CM 33280CM-267 33280M 33280M-267 33575 33575CS 33585 33585-100 33585CS 33595S 33780 33800 33800P 33850 33850-267 33950 4412HM 4412HMC	EEOO300K EEOO300KS EEOO400K EEOO400KS EElite MIRACLE 1 (1998) GGGate Model 844 HHBW0777 HHCT501130 HHMJ HHS670 JJ5011L 4 LLA100 LLA350 LLA400DC LLA400DCS LLA400LA400S LLA400PKGU LLA412 LLA412-S LLA412DC LLA500 LLA500-LA500S LLA500PKGDC LLA500DC LLA500DCS LLM100 LLM1000A LLM50 LLM50 LLM50k LLM60 LLM600A LLM60A LLM60R-128 LLM60XX LLM60K LLM70EVK LLM80 LLM800A LLM80AR-128 LLM80EVS LLM80XX LLM850EV LLM950EV MM3100M MM385M MMGJ5011U MMH MMH5011U MMHS5011U MMIracleONE MMJ MMJ5011U	MModel APT MModel GH MModel GT MModel H MModel HJ MModel J MModel Series 1200 MModel Series 1300 MModelT MModelT (Logic Control ver2) MMT5011 MMT5011U PProfessional Model Series 1200 RRSL12U RRSL12V RRSL12VH RRSW12VDC SSL1000 SSL3000501U SSL3000UL SSL3000UL8 SSL505 SSL540 SSL570 SSL575 SSL580 SSL585 SSL590 SSL595 SSL600 SSL930 SSW420 SSW470 SSW490 SSWG0370
Heras HGD230 HMD230 IGD230	KEY AUTOMATION 14A Star 300 Star 500	11240 11245-266 11246 11250 11250-266 11255 11255166 11255266	11240 11245-266 11246 11250 11250-266 11255 11255166 11255266		
Herculift SDO V8	KIBY 1000 600	11256 11260 11260-166 11260-266 11260-298 11265 11265-267 11265LMC 11280LC-R 11345 11345M 11346 11346M 11355 11355M 11356 11356M 2200 22000SDR 2215WD 22110 22220 22220-267 22245 22245C 22255 22255-2 22255-2C 22255C 22265 22265-267 22280 2248730 22500 22575 22585 3300 33110 33130M	11256 11260 11260-166 11260-266 11260-298 11265 11265-267 11265LMC 11280LC-R 11345 11345M 11346 11346M 11355 11355M 11356 11356M 2200 22000SDR 2215WD 22110 22220 22220-267 22245 22245C 22255 22255-2 22255-2C 22255C 22265 22265-267 22280 2248730 22500 22575 22585 3300 33110 33130M		
Hormann EcoMatic Eecostar B Eecostar C GGTO 90 LLIFTRONIC 500 LLIFTRONIC 700 LLIFTRONIC 800 LLineaMatic PPromatic PPromatic 2 PPromatic 3 RRollmatic RRollmatic (Double Swing) RRollmatic (One Door0 SSilentDrive SSupramatic SSupramatic 3 SSupramatic E SSupramatic E P SSupramatic E2 SSupramatic H	KINGGATES STAR68 24 Liftaway LA-SDO1 LiftMaster 100 11000SDR 11040 11040-6 11040-9 11040SM 11045 11045-6 11045-9 11045JG 11046-6 11046-9 11050 11050-6 11050-9 11055 11055-253 11055-6 11055-9 11056 11056-6 11056-9 11060 11060-253 11060-6 11060-9 11060JG 11140 11145 11146 11150 11155 11156	11260 11260-166 11260-266 11260-298 11265 11265-267 11265LMC 11280LC-R 11345 11345M 11346 11346M 11355 11355M 11356 11356M 2200 22000SDR 2215WD 22110 22220 22220-267 22245 22245C 22255 22255-2 22255-2C 22255C 22265 22265-267 22280 2248730 22500 22575 22585 3300 33110 33130M			
HySecurity SlideSmart DC 10F SlideSmart DC 15 SlideSmart DCS 10F SlideSmart DCS 15					
JANUS INTERNATIONAL Mini Pantheon					
Jaytech CK1200 CK1500					
JCM Keeroll MAIN-1EU MAIN-2EU					
					Linear 2000XLS 22002XLS 44000XLS 66000 66500 66500-P AAIister AAK-11 AAP-4 AAP-5 DDelta-3 HHSLG JJ6500 LLCO75 LLCCO800

LLDO33	MM4700	350	SSpido 6000	PADORS	RAM 5500
LLDO50	MM4700e	362D	SSpin10KCE	PDS-101	Star 24
LLSO050	MM4900e	500	SSpin11KCE		
MMulti-Code (3-wire)	MM55	502		PECCININ	RAYNOR
MMulti-Code 1099-50	QQ-7500	FM145	NORMSTAHL	CP 4000	FLITESTAR
PPDS 800	QQ-7700	FM402	Magic 1000	CP2010	POWERHOIST STANDARD
SSLC	SSynergy 260	MM600	Magic 600	CP4030	--PSJ--PSH-
SSLD	SSynergy 270		ULTRA EXCELLENT	CP5000	
SSLR	SSynergy 280	Moore-o-Matic		GATTER 3020	RDA
SSWC	SSynergy 360	700	Novoferm		GTA 453
SSWD	SSynergy 370	700-240	Novomatic 553	Platinum Access Systems	
SSWR	SSynergy 380	727	Novomatic 403	BLS840	RIB
VVS-GSLG		750	Safe 800 III		K400
	MARTIN	757		POLARGOS	
Lynx	DC2500	X125	NRG Automation	EASY WAY 201	Richards Wilcox
455 Plus	DC2500e	X133	Black Edition GDO		2265RWC
	DC3700	X150		Polaris	
Manaras	DC3700e	Z133		500	ROGER
Opera-MH			OEM	502	BR20-500
Opera-MJ	MAX – Maximum Controls-	Motorline	CTR32	700	H70-103AC
	MAX F18	MC50BR		702	
Marantec		MC50SC	Open Sesame Door Systems		
CS300	MERIK	MC50SE	Model 133	Power Master	Rollertec
211	200M			CSG	V2
220	230 Plus	Mtec	OVERHEAD DOOR	RSG	ROSSI
250	411M	UST 1K-KL	2026		DZ3 SK
252	711M		4060L	POWERTECH	
360	Merik 230 Plus	MultiCode	556	PL1000	Ryobi
370	PC160 (Control Box)	1099	656	PL600	Ultra Quiet G2D00
Comfort 130	PC170 (Control box)	3090	65A		
CComfort 150		Nice	CD & CDB series	PRASTEEL	RYTEC
CComfort 160	MERLIN	MC424	Destiny 1200	UNIK2E (Control Board)	System4
CComfort 220.2	G715D	MMC824H	Destiny 1500	UNIK2ESK (Control Board)	
CComfort 250	M230T	PPOA1 (Control board)	Legacy	PROTECO	Saturn
CComfort 250.2	MR650EVO	PPOP	Legacy 650	Kit MyDiamond	E 600
CComfort 250.2 speed	MR850EVO	RR01000	Legacy 800	Q60A-R	SCHELLENBERG
CComfort 252	MT1000EVO	RR01040	Legacy 850	Q80A – board-	DRIVE 600 N
CComfort 252.2	MT5580P	RR01124	Model 1026		DRIVE 800 N
CComfort 260	MT60	RR01010	Model 1029	PUJOL	Smart Drive 10
CComfort 270	MT60P	RR0300	Model 2029	Mini Marathon	
CComfort 280		RRO500	OCG650		SCS
CComfort 360	MFZ	RRUN 1500	OCG600	Quantum	OpenGate3
CComfort 370	CS 300	RRUN 1800	OCG750	3212	
CComfort 380		RRUN 1800P	OCG800		SEA
CComfort 500S	Mhouse	RRUN 2500	Phantom	Rademacher	GATE 2 DG
CComfort 60	SL1 and SL10	RRUN 2500P	ProMax PMX 75	Rolloport S1	
CComfort 880	WG20	RRobus 1000	ProMax PMX 85	Rolloport SX5	SEG
CComfort 881		RRobus 1000P	Python		Pivus Plus
DDelexe DL2005	Micanan	RRobus 1000P	Python2	Ramset	
GGDO 500(S or L)	Pro LJ	RRobus 600	RSX	RAM 100	SEIP
GGDO 700 (S or L)		RRobus 600P	Signature 930	RAM 1000	EASY SM
MM4500	Mighty Mule	SSPIN	Signature 950	RAM 300	TM 60
MM4500e	200	SSoon			

TS 100
TS 75

Serali

Mercurio 300 F
Mercurio 500 F
Mercurio 800 F

SIMTECH

WJKMP201
WJKMP202

SIMU

GM 800

SKY MASTER

330MX
F-350GX
F-350MX

Skylink Technology

ATMOS
EQ series

SOMFY

Axorn 50
Axorn 70
Axovia 220
ROLLIXO RTS

SOMMER

1042v001
1042v004
2060 evo+
2080 evo+
2110 evo+
Aperto
duo rapido 650
duo vision 500
duo vision 650
duo vision 800
Marathon 550 SL
GiGAControl A
S 9060
S 9080
S 9110
Sprint S 550N
Starglider 300
Synaris 550 – 800
TWIST 200 E

STANLEY

PT210
ST300
TT200

STEEL-LINE

BOL4
FORZA
SR60
ST50EVOB
ST50EVOC

SuperJack

EasyJack

SUPERLIFT

SDO-1C

SWS

Rollertec V2
SeceuroGlide

TAU

Control Board K120M
Control Board K125M
Control Board K580M

Telcoma

T101
T200
T201

TELECO

Mydoor Basic

Tormatic

GTA 601
GTA 602

Tousek

DYNAMIC T20S
DYNAMIC T20S PRO
DDYNAMIC T25S
DDYNAMIC T25S PRO
PPRO 400
PPULL T10
PPULL T15
PPULL T24
PPULL T24 speed
PPULL T5
PPULL T8
PPULL T8A
PPULL TSA

TPULL X o

PPULL XD o
PPULL XR 10
PPULL XR 15
TIPS 20
TIPS 20 MASTER SLAVE
TIPS 20 PRO
TIPS 20N
TIPS 35 PRO
TIPS 40 PRO
TIPS 6 speed
TIPS 60 PRO

Unknown

G-10

US AUTOMATIC

300D
300S
Patriot
RANGER 500

V2Electronica

AYROS 1000D-24V
AYROS 1200-230V
AYROS 400D-230V
AYROS 500D-24V
AYROS 600D-24V
AYROS 800-230V
CITY1
City9
FLEXY2
JEDI 1000
JEDI 700
V2 Vega-C

VDS

Carrera 800
EURO220M1 Control Board
SIMPLY

Viking Access

F1
G5
H10
K2
L3
R6
T-21
i-8

VIPER

TC-3
X50
X70

Wayne Dalton

3012
3213
iDrive
PProDrive 3220B-Z
PProDrive 3221C
PProDrive 3221C-Z
PProDrive 3222C
PProDrive 3222C-Z
PProDrive 3224C
PProDrive 3224C-Z
PProDrive 3320B

PProDrive 3322B
PProDrive 3322B-2
PProDrive 3324B
PProDrive 3324B-Z
QQuantum 3212
QQuantum 3214
QQuantum 3314
QQuantum 3316
QQuantum 3414
WWizard 2113

WECLA

Sesam 500 KL46

Wisniowski

ST-2

Xtreme

425-1620
425-1636
425-1670
425-1672

ZAP

800
8800 Series 3

ZAREBA

G452

Zec Automation

FR800

Troubleshooting

Cannot connect to your Wi-Fi network.

Make sure that you have entered the correct Wi-Fi password during the Wi-Fi setup. Check if there are problems with your internet connection. If the Wi-Fi signal is too weak, reset your Wi-Fi router and try again.

Setup is not working properly.

1. Close all apps that are running in the background and re-open the atomi smart app.
2. Uninstall and reinstall the atomi smart app then repeat the setup process.

Garage door not opening/closing

Check that the red and white wires running from the Smart Garage Door Opener are properly connected to the garage door opener panel.

Make sure each wire corresponds to its respective color on the module at the book of the garage door opener panel i.e red to red and white to white.

Not receiving push notifications

On the atomi smart opp, go to Me > Settings > Push Notifications and slide the bar to turn-on push notifications.

I'm still having trouble!

Wi-Fi networks come in various shapes and sizes, often with many quirks. It doesn't mean that your Smart Garage Door Opener is malfunctioning. If the problems persist, please try these steps, in order:

1. Force quit and re-launch the atomi smart app. Check to see if this fixes the issue.
2. Unplug the Garage Door Opener and plug it back in. Check to see if this fixes the issue.
3. Unplug your Wi-Fi router and plug it back in. Check to see if this fixes the issue.
4. Delete and reinstall the atomi app. Check to see if this fixes the issue.
5. If all else fails, restore your Smart Garage Door Opener to factory settings: Unplug your Smart Garage Door Opener. Plug it back in, pull and hold the power button for five secs.

FCC Notice:

WARNING: Changes or modifications to this unit that are not expressly approved by the party responsible for compliance could void the user's authority to operate the equipment.

NOTES: This equipment has been tested and found to comply with the limits for a Class B digital device, pursuant to Part 15 of the FCC Rules. These limits are designed to provide reasonable protection against harmful interference in a residential installation. This equipment generates, uses and can radiate radio frequency energy, and if not installed and used in accordance with the instructions, may cause harmful interference to radio communications.

However, there is no guarantee that interference will not occur in a particular installation. If this equipment does cause harmful interference to radio or television reception, which can be determined by turning the equipment off and on, the user is encouraged to try to correct the interference by one or more of the following measures:

- Reorient or relocate the receiving antenna.
- Increase the separation between the equipment and receiver.
- Connect the equipment into an outlet on a circuit different from that to which the receiver is connected.
- Consult the dealer or an experienced radio/TV technician for help.

CAUTION: Suitable for indoor use only.

WARNING

This product can expose you to chemicals including Pb, which is known to the State of California to cause birth defects or other reproductive harm. For more information, go to www.P65Warnings.ca.gov.

For questions or concerns,
email us at support@atomiusa.com
Manufactured and marketed by Atomi, Inc.
10 West 33rd St., New York, NY 10001
atomi™ is a trademark of Atomi, Inc.
Designed by atomi in New York. Made in China.

One-year limited warranty from date of purchase against defects in material and workmanship.

Google is a trademark of Google LLC. Amazon, Alexa and all related logos are trademarks of Amazon.com, Inc. or its affiliates.