



The new degree of comfort.™

# The Professional™ ultra low NOx gas water heater line is SCAQMD rule 1121 compliant and offers a longer warranty

## Efficiency

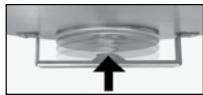
- .56 - .62 EF
- More hot water at a low operating cost

## Performance

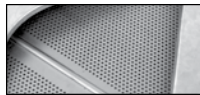
- FHR: 53 - 107-gallons for natural gas
- Recovery rate is 30.3 - 45.5 gallons for natural gas at a 90 degree rise

## Guardian System™ & Sensor

- Exclusive air/fuel shut-off device for double protection
- Maintenance free – no filter to clean



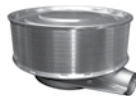
Combustion Shut-off System



Flame Arrestor Plate

## Low Emissions

- Ultra Low NOx radiant burner design
- Stainless steel construction
- SCAQMD Rule 1121 compliant
- Meets 10 ng/J NOx requirements



## Self-Cleaning

- EverKleen™ patented system fights sediment build-up
- Reduces fuel costs
- Provides more hot water

## Easy to Light

- No matches required

## Longer Life

- Patented magnesium anode rod with resistor protects the tank from rust

## High Altitude Compliant

- Certified to 10,200 ft. above sea level

## Plus...

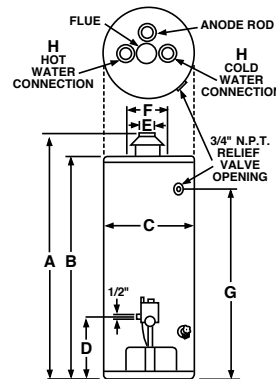
- Brass drain valve and temperature and pressure relief valve are included
- Exclusive Rheemglas® lining

## Warranty

- 8-Year limited tank and parts warranty with a professional installation\*
- With ProtectionPlus™ the 8-year limited tank warranty becomes 12-year

\*See Residential Warranty Certificate for complete information

Units meet or exceed ANSI requirements and have been tested according to D.O.E. procedures. Units meet or exceed the energy efficiency requirements of NAECA, ASHRAE standard 90, ICC Code and all state energy efficiency performance criteria.



**Professional Ultra Low NOx**  
28, 38, 40, 48, 50 and  
60-Gallon Capacities  
Natural Gas



1LEED Point = 1

DESCRIPTION		FEATURES				ROUGHING IN DIMENSIONS (SHOWN IN INCHES)								ENERGY INFO.		
T Y P E	GAL. CAP.	MODEL NUMBER	GAS INPUT IN THOUS. BTU/H NAT.	RECOVERY IN G.P.H. 90° RISE NAT.	FIRST HOUR DEL. G.P.H. NAT.	HT. TO VENT A	TANK HT. B	DIAM. C	HT. TO GAS CONN. D	VENT SIZE E	WATER CONN. CNTR. F	HT. TO SIDE T&P G	WATER CONN. H	SHIP. WT. (LBS)	ENERGY FACTOR NAT.	AVG. ANN. OPER. COST NAT.
T A L L	28	22V30 PROFN	30	30.3	53	59	56-1/4	16-1/8	17-3/8	3 or 4	8	50	3/4	105	0.62	\$294
	38	22V40 PROFN	38	38.4	72	60-5/8	57-3/4	18-1/8	17-3/8	3 or 4	8	51-5/8	3/4	125	0.60	\$304
	40	RHG PRO40FN†	38	38.4	73	63	60-1/8	21	17-3/8	3 or 4	8	54	3/4	140	0.62	\$294
	48	22V50 PROFN	40	40.4	91	60-5/8	57-7/8	20-1/8	17-3/8	3 or 4	8	51-3/4	3/4	135	0.58	\$315
	50	RHG PRO50FN†	36	36.4	91	62-5/8	59-7/8	23	17-3/8	3 or 4	8	53-5/8	3/4	170	0.62	\$294
	60	RHG PRO60FN	45	45.5	107	63-1/4	59-3/4	23	17-3/8	4	8	53	3/4	205	0.56	\$326
SHORT	38	22V40S PROFN	36	36.4	68	51-7/8	49-1/8	20-1/8	17-3/8	3 or 4	8	43	3/4	135	0.60	\$304

Energy Factor and Average Annual Operating Costs based on D.O.E. (Department of Energy) test procedures. D.O.E. national average fuel rate natural gas \$1.218/therm; LP \$1.87/gallon.

*In keeping with its policy of continuous progress and product improvement, Rheem reserves the right to make changes without notice.*

Rheem Water Heating • 101 Bell Road  
Montgomery, Alabama 36117-4305 • www.rheem.com



INTEGRATED HOME COMFORT