

# HDD Password Tool

User's Manual

English


# Table of Contents


Chapter 1: Introduction .....	3
Trademarks .....	3
Chapter 2: Required Operating System .....	5
- HDD Password Tool for Windows®.....	5
- HDD Password Tool for Mac®.....	5
Chapter 3: How to Install HDD Password Tool .....	6
- Windows® users .....	6
- Mac® users .....	7
Chapter 4: How to Use HDD Password Tool .....	8
4.1 Starting up HDD Password Tool .....	8
- Windows® users .....	8
- Mac® users .....	8
4.2 Set password protection .....	8
4.3 Unlock the drive .....	9
- Using automatic pop-up to unlock the drive.....	9
- Using manual pop-up to unlock the drive .....	10
4.4 Remove password protection .....	10
4.5 Change password.....	11
4.6 If you forget your password .....	12

# Chapter 1: Introduction

The HDD Password Tool is an easy to use utility to protect your data from unauthorized access by setting a unique password. Simply install the tool, and set your password. Each time you connect your HDD to any PC into which the HDD Password Tool is installed, it will automatically prompt you for the password. The HDD Password Tool is available for Windows® and Mac®.

<b>Note</b>	This tool provides only the lock/unlock feature. It does not provide data encryption feature.
-------------	---

 <b>CAUTION</b>	If you forget your password, the drive cannot be unlocked and you can no longer access the data. If you use secure erase function, you can reuse the drive. However, all data on the drive is erased including HDD Password Tool. It is highly recommended to back up this tool to other storage media.
--	---

 <b>CAUTION</b>	<p>There is a possibility that when your external HDD is locked by a password and your PC goes into, standby, sleep, or hibernation mode it may not properly recover.</p> <p>To avoid this situation please use one of the options described here.</p> <p>Option 1: Set your PC to not use standby, sleep or hibernation modes.</p> <p>Or...</p> <p>Option 2: Disconnect the external HDD as soon as your done using it.</p> <p>If your PC fails to recover from one of these modes, please disconnect the password locked external HDD from the USB port. This action will allow the PC to recover from this mode. The external HDD can be reconnected at this point.</p>
--	--

<b>Note</b>	The screens of the dialogs in this manual are those in Windows® 7 environment. However, all components in the dialogs are common with other Windows® OS and Mac OS®.
-------------	--

\* The images depicted in this manual may differ from the actual product.

\* The design, specifications, product manual, and related information are subject to change without notice.

## Trademarks

-Microsoft® and Windows® are registered trademarks of Microsoft Corporation in the United

States and other countries.

-Mac® and Mac OS® X are trademarks or registered trademarks of Apple Inc. in the United States and other countries.

-Intel® and Pentium® are trademarks or registered trademarks of Intel Corporation in various nations.

-Other companies and products mentioned herein are trademarks or registered trademarks of their respective owners.

## Chapter 2: Required Operating System

The following are required to properly operate the HDD Password Tool:

### - HDD Password Tool for Windows®

Windows Vista® SP2 \*1

Windows® 7 SP1 \*1

Windows® 8.1

Windows® 10

### - HDD Password Tool for Mac

The following Mac OS X with Intel CPU

Mac OS X v 10.5      Leopard

Mac OS X v 10.6      Snow Leopard

Mac OS X v 10.7      Lion

OS X v 10.8           Mountain Lion

OS X v 10.9           Mavericks

OS X v 10.10          Yosemite

OS X v 10.11          El Capitan

macOS v 10.12        Sierra

\*1 Toshiba has ended the support for the Windows OS versions for which Microsoft Corporation in the United States has ended the support.

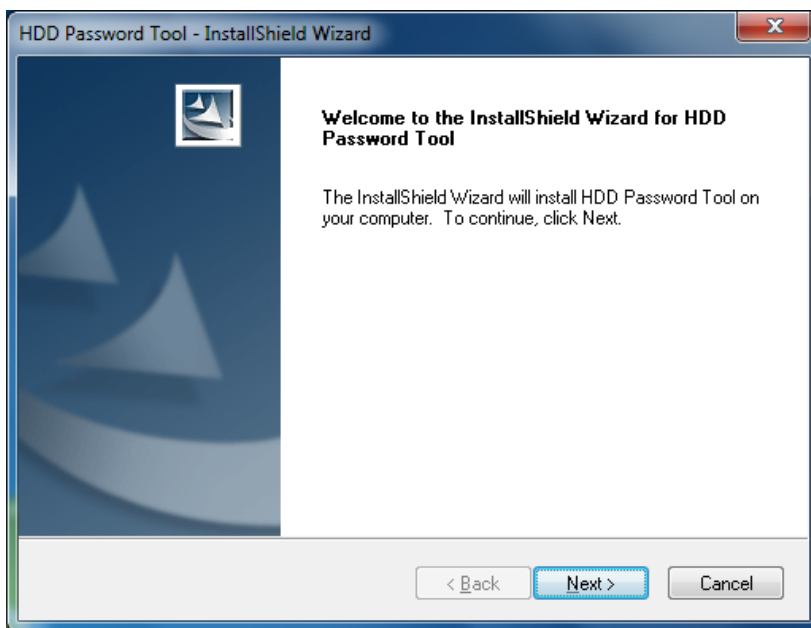
# Chapter 3: How to Install HDD Password Tool

This chapter describes how to install the HDD Password Tool.

## - Windows® users

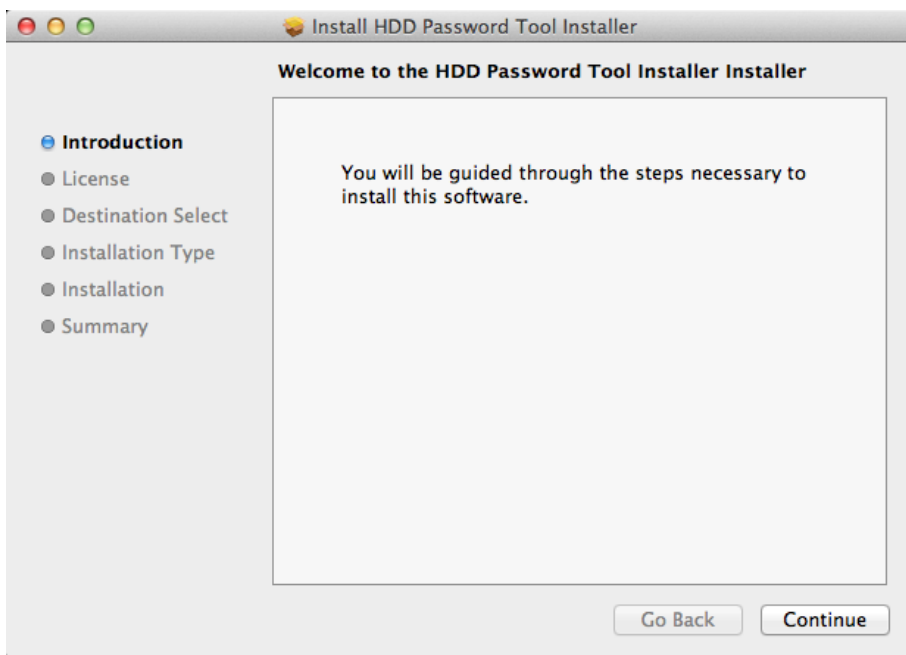
**Note** Please install and run this program under administrator privileges.

- 1) Start up the PC.
- 2) Connect the Toshiba external drive to the PC and wait until the drive appears in “My Computer” (Windows® XP) or “Computer” (Windows Vista®, Windows® 7, Windows 8).
- 3) Open the drive and double click “HDD Password Tool for Windows Setup.exe” under the folder: “HDD Password Tool”.
- 4) Choose the language for setup and then click “Next >” button.
- 5) Follow the instructions of the setup program from next screen. Click “Next >” button to move from one screen to next. One of the screens has License Agreement. Please read and accept to continue the setup.



## - Mac® users

- 1) Start up the computer.
- 2) Connect the Toshiba external drive to the computer and wait for the drive to be mounted.
- 3) Double click “HDD Password Tool for Mac.dmg” under the folder: “HDD Password Tool “on the mounted drive.
- 4) Double click “Install HDD Password Tool” to start installation.
- 5) Follow the instructions of the installation program from next screen. Click “Continue” button to move from one screen to next. One of the screens has License Agreement. Please read it and accept to continue the installation.



# Chapter 4: How to Use HDD Password Tool

This chapter describes how to use the HDD Password Tool.

## 4.1 Starting up HDD Password Tool

### - Windows® users

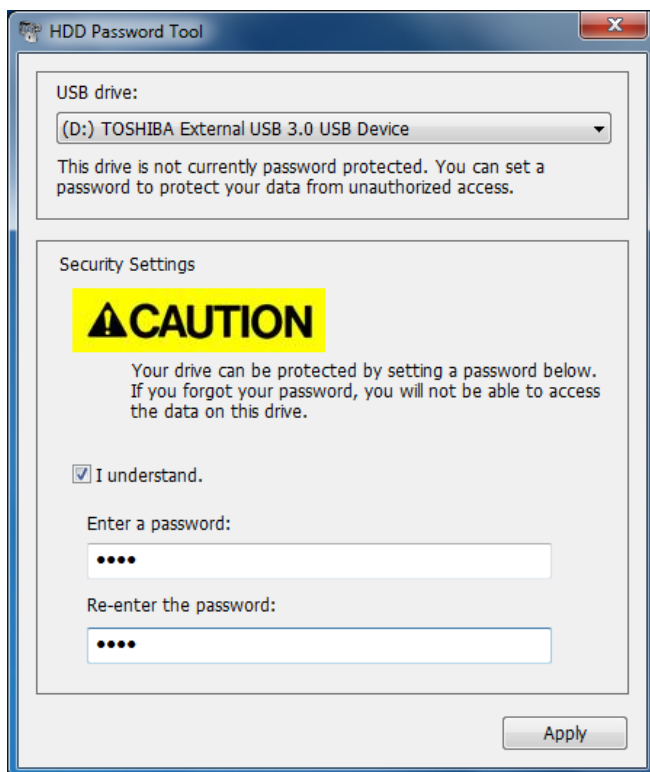
Double click the “HDD Password Tool” software icon (from Start > all programs > Toshiba > HDD Password Tool > HDD Password Tool) or click the “HDD Password Tool” software tile (Windows 8).

<b>Note</b>	The dialog of version information of this software can be popped up by right clicking on title bar and selecting “About HDD Password Tool...”.
-------------	--

### - Mac® users

Double click the “HDD Password Tool” software icon (“HDD Password Tool” under “Applications”).

## 4.2 Set password protection




- 1) Connect the Toshiba external drive to the PC.
- 2) Start up the HDD Password Tool. (See Section 4.1)
- 3) Select the USB drive to set a password.

<b>Note</b>	If one drive is connected, the drive is selected automatically. If multiple drives are connected, you can change a drive by selecting from the list box.
-------------	--

- 4) Read CAUTION statement and if you understand it, then click the check box of “I understand.”



 <b>CAUTION</b>	If you forget your password, you will not be able to access the data on this drive.
--	---

5) Enter a new password in both fields to verify the password.

<b>Note</b>	The maximum length of password is 32 characters.
-------------	--

6) Click “Apply” button.

<b>Note</b>	In the next dialog box, you can set a password hint (up to 100 characters) that will directly remind you of your password. This hint will be displayed if the incorrect password is entered.
-------------	--

7) Confirm the message: “The password is now set.”

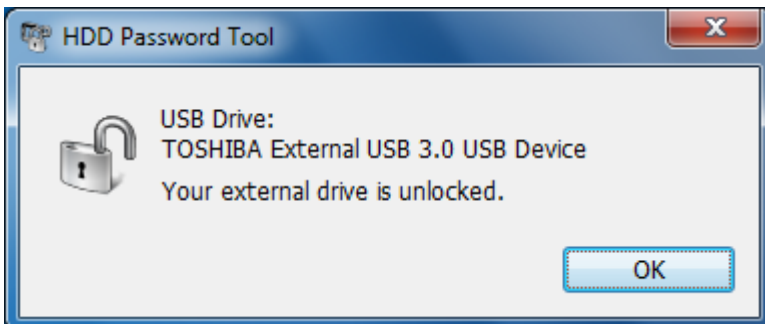
### 4.3 Unlock the drive

- Using automatic pop-up to unlock the drive

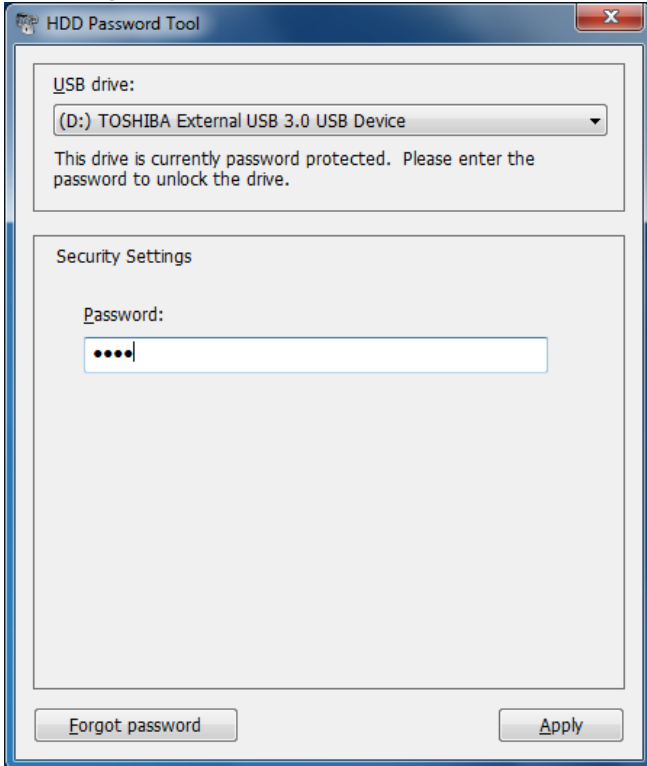


When your locked drive is connected to the PC, the screen above pops up automatically.

- 1) Enter the password.
- 2) Click “Apply” button.
- 3) The message below appears.

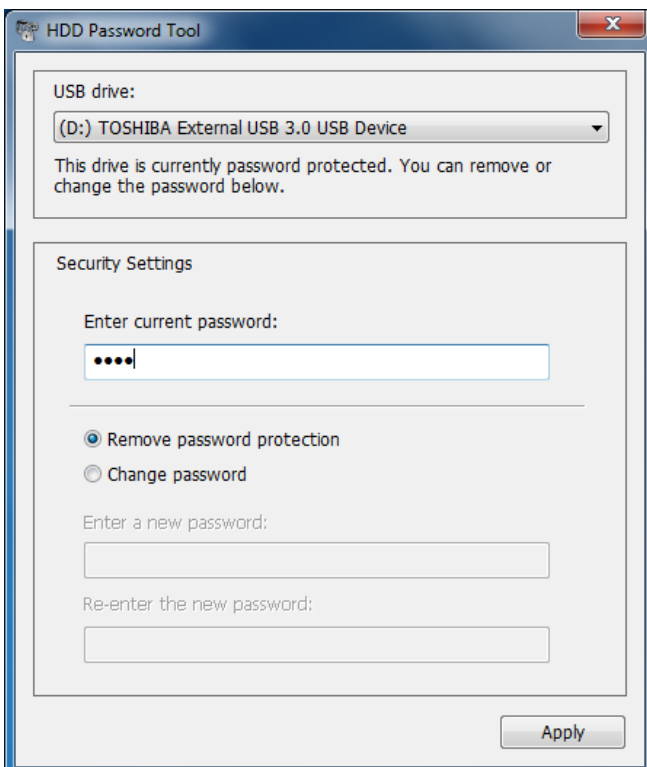


## - Using manual pop-up to unlock the drive



- 1) Start up the HDD Password Tool (See Section 4.1)
- 2) If the drive is still locked, the screen above appears.
- 3) Enter the password.
- 4) Click “Apply” button.
- 5) Confirm the message:” The drive is unlocked.”

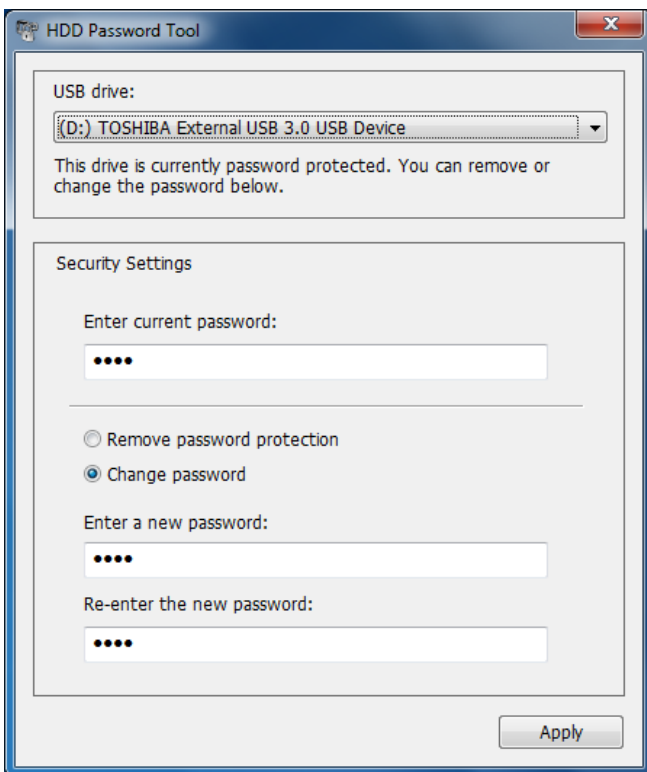
## 4.4 Remove password protection



Once you remove password protection, your drive is no longer protected by the password until you set a password again.

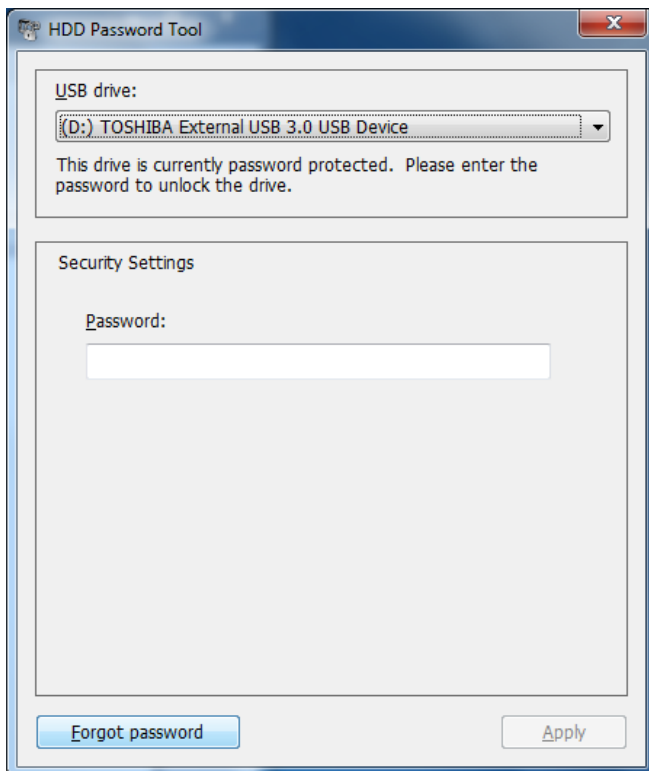
- 1) Start up the HDD Password Tool. (See section 4.1)
- 2) If the drive is unlocked, the screen above appears.
- 3) Select “Remove password protection”.
- 4) Enter the current password.
- 5) Click “Apply” button.
- 6) Confirm the message:” Password protection has been removed.”

## 4.5 Change password

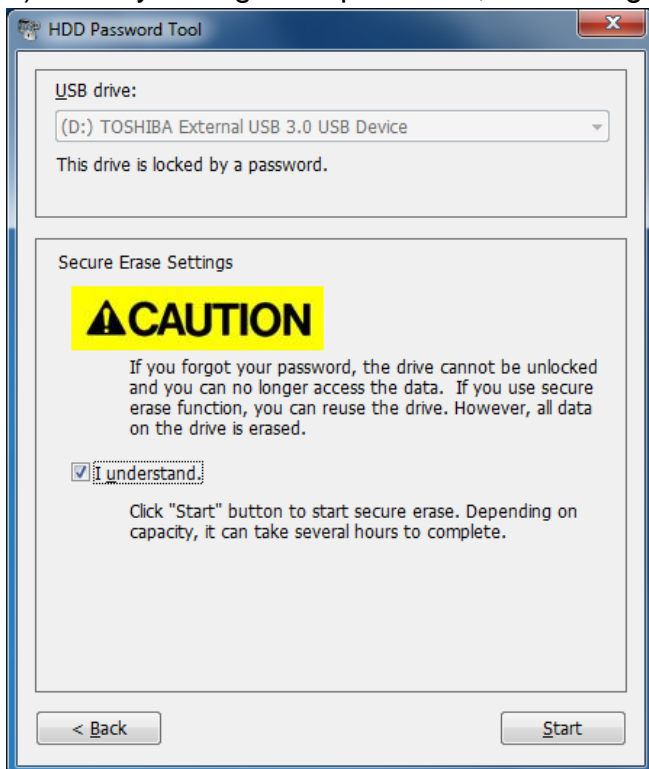


- 1) Start up the HDD Password Tool. (See section 4.1)
- 2) If the drive is unlocked, the screen above appears.
- 3) Select “Change password”.
- 4) Enter the current password.
- 5) Enter a new password into the two fields to verify it.
- 6) Click “Apply” button.
- 7) Confirm the message:” Password is changed.”

## 4.6 If you forget your password



- 1) Start up the HDD Password Tool. (See section 4.1)
- 2) If the drive is still locked, the screen above appears.
- 3) When you forget the password, click "Forgot password" button.



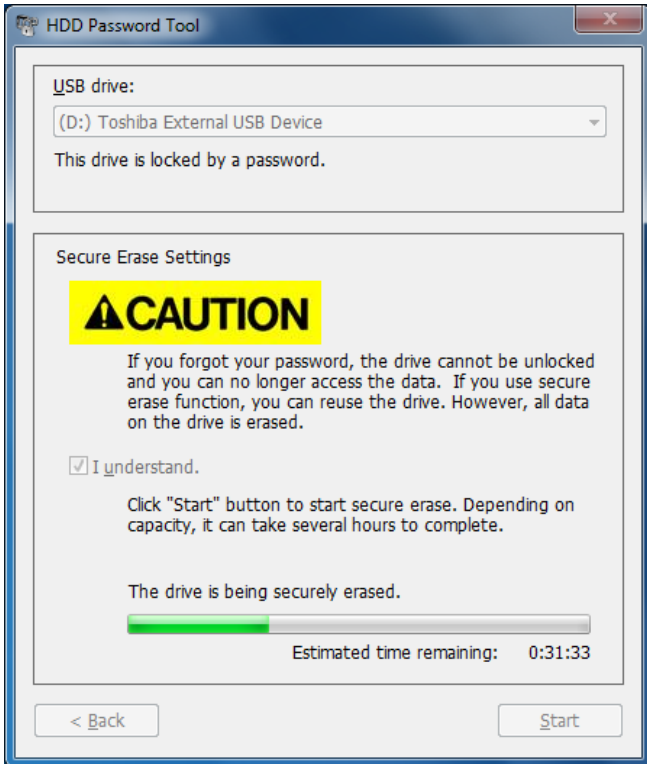
- 4) Read CAUTION statement and if you understand it, then click the check box of "I understand."



## CAUTION

If you forgot your password, the drive cannot be unlocked and you can no longer access the data. If you use secure erase function, you can reuse the drive. However, all data on the drive is erased. This operation can't be canceled once starts.

5) Click "Start" button to start secure erase.



## CAUTION

Do not turn off the PC or disconnect the USB-HDD while secure erase is running. HDD might be damaged.

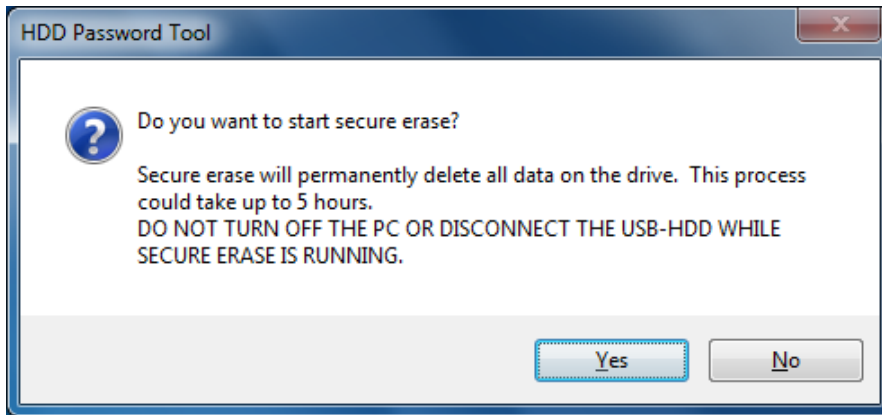
### Note

Secure erase cannot start while the PC is running on battery power. Please connect the AC adapter to your PC.

### Note

If multiple locked drives are connected, secure erase will not work until you disconnect the drives that you would not like to erase. Just one locked drive should be connected when starting secure erase.

6) Choose Yes or No to continue or abort the secure erase.



7) While the drive is being securely erased, progress and estimated time remaining is displayed.

<b>Note</b>	Depending on the capacity of the drive, it may take several hours to complete the secure erase.
-------------	---

8) Confirm the message: "Secure Erase successfully completed."

<b>Note</b>	After secure erase is completed, all data on the whole disk are deleted. Please format the drive before reusing it.
-------------	---