

TIMEX®

Register your product at
www.timex.com

W-212 143-095004 NA



THANK YOU FOR PURCHASING YOUR TIMEX® WATCH.

EXTENDED WARRANTY

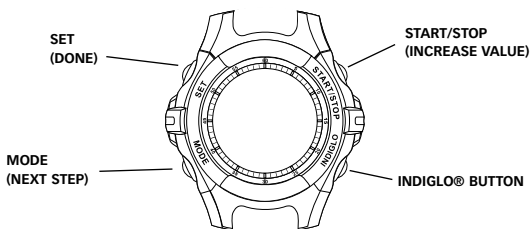
Available in U.S. only. Extend your warranty for an additional 4 years from date of purchase for \$5. You can pay with AMEX, Discover, Visa or MasterCard by calling 1 800-448-4639 during normal business hours. Payment must be made within 30 days of purchase. Name, address, telephone number, purchase date, and 5-digit model number required. You can also mail a check for \$5 to: Timex Extended Warranty, P.O. Box 1676, Dept. EF, Little Rock, AR 72203.

Please read instructions carefully to understand how to operate your Timex® watch. **Your model may not have all of the features described in this booklet.**

FEATURES AND BASIC OPERATION

- Time with 12- or 24-hour format
- Day and date
- 2nd time zone
- Optional hourly chime
- 24-hour stopwatch
- 24-hour countdown timer
- Daily alarm
- INDIGLO® night-light

Press **MODE** repeatedly to step through modes: Time, Stopwatch (SP), Alarm (AL), Timer (TR), and Time 2 (T2). Press **MODE** to exit current mode and return to Time mode.



Button functions shown with setting functions in parentheses

TIME

To set time and date:

- 1) With time and date showing, press **SET** and hold for 2 seconds.
- 2) Seconds flash. Press **START/STOP** to round time to nearest minute, setting seconds to zero.
- 3) Press **MODE**. Hour flashes. Press **START/STOP** to change hour, including AM (no symbol) and PM.
- 4) Press **MODE**. Minutes flash. Press **START/STOP** to change minutes; hold button to scan values.
- 5) Press **MODE**. Month flashes. Press **START/STOP** to change month.
- 6) Press **MODE**. Date flashes. Press **START/STOP** to change date.
- 7) Press **MODE**. Day flashes. Press **START/STOP** to change day.
- 8) Press **MODE**. Time format flashes. Press **START/STOP** to select 12- or 24-hour time format. 12-hour format has AM/PM.
- 9) Press **SET**, at any step, to exit and save settings.

Date (day of month) appears in upper part of display in Time mode. Press and hold **START/STOP** to see month and date in large digits.

STOPWATCH

This mode provides a stopwatch function for timing events. Press **MODE** repeatedly until SP appears.

To start, press **START/STOP**. Stopwatch counts up by hundredths of a second up to 30 minutes, then by seconds up to 24 hours before starting over. Day of week indicators cycle forward and runners icon or flashes to indicate stopwatch is running.

To stop, press **START/STOP**. Runners icon freezes to indicate stopwatch is stopped.

To resume, press **START/STOP**, or to reset (clear) stopwatch, press **SET**.

While stopwatch is running, press **SET** to take lap/split and see your time up to that point. Display freezes while stopwatch continues to run. Press **SET** to resume display of running stopwatch.

Stopwatch continues to run if you exit mode. Runners icon flashes in all modes.

ALARM

Watch has a daily alarm. Press **MODE** repeatedly until AL appears.

To set alarm:

- 1) Press **SET** and hold for 2 seconds. Hour flashes. Press **START/STOP** to change hour, including AM (no symbol) and PM.
- 2) Press **MODE**. Minutes flash. Press **START/STOP** to change minutes; hold button to scan values.
- 3) Press **MODE**. Time zone flashes. Press **START/STOP** to select whether alarm is referenced to time shown in Time mode (t1) or Time 2 (t2).
- 4) Press **SET**, at any step, when done setting.

To turn on/off alarm and hourly chime, press **START/STOP** repeatedly. Watch will step through four combinations of alarm and chime settings. Bell icon or ALARM or ALM appears when alarm is on. CHIME or CH appears when hourly chime is on – watch will chime on every hour.

When alarm sounds, press any button to silence. If no button is pressed, alarm will sound for 20 seconds. If watch is in Time mode, alarm display will pop up for duration of alert.

Alarm repeats daily unless turned off.

TIMER

This mode provides a countdown timer with alert. Press **MODE** repeatedly until TR appears.

To set countdown time:

- 1) Press **SET** and hold for 2 seconds. Hours flash. Press **START/STOP** to change hours; hold button to scan values.
- 2) Press **MODE**. Minutes flash. Press **START/STOP** to change minutes.
- 3) Press **MODE**. Seconds flash. Press **START/STOP** to change seconds.
- 4) Press **SET**, at any step, when done setting.

To start timer, press **START/STOP**. Day of week indicators cycle backward and timer icon or TR flashes to indicate timer is running.

To pause countdown, press **START/STOP**. Timer icon freezes to indicate timer is stopped.

To resume countdown, press **START/STOP**, or to reset and set countdown, press **SET** and hold for 2 seconds.

When countdown is within 10 seconds of completion, watch beeps once every second. Watch beeps repeatedly when countdown ends (timer reaches zero). Press any button to silence. Press **SET** to reset and set countdown.

Timer continues to run if you exit mode. Timer icon flashes in all modes.

When countdown is done, timer display will pop up in Time mode for duration of alert.

TIME 2

Watch can display time in a second time zone. Press **MODE** repeatedly until T2 appears.

To set 2nd time zone's time:

- 1) Press **SET** and hold for 2 seconds. Hour flashes. Press **START/STOP** to change hour, including AM (no symbol) and PM.
- 2) Press **MODE**. Minutes flash. Press **START/STOP** to change minutes by 30 from minutes in Time mode. Seconds are the same as in Time mode and can only be set there.
- 3) Press **SET**, at any step, when done setting.

INDIGLO® NIGHT-LIGHT

Press INDIGLO® button to illuminate watch display for 3 seconds.

Electroluminescent technology used in the INDIGLO® night-light illuminates watch display at night and in low light conditions.

BATTERY

Timex strongly recommends that a retailer or jeweler replace battery. Battery type is on watch back. If present, push/short internal reset switch after replacing battery. Battery life estimates are based on certain assumptions regarding usage; battery life may vary depending on actual usage.

DO NOT DISPOSE OF BATTERY IN FIRE. DO NOT RECHARGE. KEEP LOOSE BATTERIES AWAY FROM CHILDREN.

WATER RESISTANCE

If your watch is water-resistant, meter marking or () is indicated.

Water-Resistance Depth	p.s.i.a. * Water Pressure Below Surface
30m/98ft	60
50m/164ft	86
100m/328ft	160

*pounds per square inch absolute

WARNING: TO MAINTAIN WATER-RESISTANCE, DO NOT PRESS ANY BUTTONS UNDER WATER.

1. Watch is water-resistant only as long as lens, push buttons and case remain intact.
2. Watch is not a diver watch and should not be used for diving.
3. Rinse watch with fresh water after exposure to salt water.

BRACELET ADJUSTMENT

FOLDOVER CLASP BRACELET

Find spring bar that connects bracelet to clasp. Using a pointed tool (Fig. 1), push spring bar in and gently twist bracelet to disengage. Determine wrist size, then insert spring bar in correct bottom hole (Fig. 2). Push down on spring bar, align with top hole and release to lock in place (Fig. 3).



Fig. 1

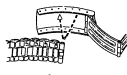


Fig. 2

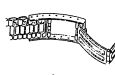


Fig. 3

BRACELET LINK REMOVAL

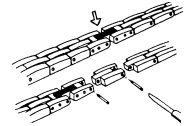
Removing Links: Place bracelet upright and insert pointed tool in opening of link. Push pin forcefully in direction of arrow until link is detached (pins are designed to be difficult to remove). Repeat until desired number of links are removed.



Reassembly: Rejoin bracelet parts. Push pin back into link in opposite direction of arrow. Press pin down securely into bracelet until it is flush.

SOLID LINK BRACELET

Removing Links: Using a very small screwdriver, remove screws by turning counterclockwise. Repeat until desired number of links are removed. Do not remove links adjacent to clasp.



Reassembly: Rejoin bracelet parts and insert screw in end of opening where it was removed. Turn screw clockwise until tight and flush with bracelet.

TIMEX INTERNATIONAL WARRANTY

(U.S. – LIMITED WARRANTY – PLEASE SEE FRONT OF INSTRUCTION BOOKLET FOR TERMS OF EXTENDED WARRANTY OFFER)

Your TIMEX® watch is warranted against manufacturing defects by Timex Corporation for a period of ONE YEAR from the original purchase date. Timex and its worldwide affiliates will honor this International Warranty.

Please note that Timex may, at its option, repair your watch by installing new or thoroughly reconditioned and inspected components or replace it with an identical or similar model. **IMPORTANT — PLEASE NOTE THAT THIS WARRANTY DOES NOT COVER DEFECTS OR DAMAGES TO YOUR WATCH:**

- 1) after the warranty period expires;
- 2) if the watch was not originally purchased from an authorized Timex retailer;
- 3) from repair services not performed by Timex;
- 4) from accidents, tampering or abuse; and
- 5) lens or crystal, strap or band, watch case, attachments or battery. Timex may charge you for replacing any of these parts.

THIS WARRANTY AND THE REMEDIES CONTAINED HEREIN ARE EXCLUSIVE AND IN LIEU OF ALL OTHER WARRANTIES, EXPRESS OR IMPLIED, INCLUDING ANY IMPLIED WARRANTY OF MERCHANTABILITY OR FITNESS FOR PARTICULAR PURPOSE. TIMEX IS NOT LIABLE FOR ANY SPECIAL, INCIDENTAL OR CONSEQUENTIAL DAMAGES. Some countries and states do not allow limitations on implied warranties and do not allow exclusions or limitations on damages, so these limitations may not apply to you. This warranty gives you specific legal rights and you may also have other rights which vary from country to country and state to state.

To obtain warranty service, please return your watch to Timex, one of its affiliates or the Timex retailer where the watch was purchased, together with a completed original Watch Repair Coupon or, in the U.S. and Canada only, the completed original Watch Repair Coupon or a written statement identifying your name, address, telephone number and date and place of purchase. Please include the following with your watch to cover postage and handling (this is not a repair charge): a US\$ 7.00 check or money order in the U.S.; a CAN\$6.00 cheque or money order in Canada; and a UK£2.50 cheque or money order in the U.K. In other countries, Timex will charge you for postage and handling. NEVER INCLUDE A SPECIAL WATCHBAND OR ANY OTHER ARTICLE OF PERSONAL VALUE IN YOUR SHIPMENT.

For the U.S., please call 1-800-448-4639 for additional warranty information. For Canada, call 1-800-263-0981. For Brazil, call +55 (11) 5572 9733. For Mexico, call 01-800-01-060-00. For Central America, the Caribbean, Bermuda and the Bahamas, call (501) 370-5775 (U.S.). For Asia, call 852-2815-0091. For the U.K., call 44 020 8687 9620. For Portugal, call 351 212 946 017. For France, call 33 3 81 63 42 00. For Germany, call 49 7 231 494140. For the Middle East and Africa, call 971-4-310850. For other areas, please contact your local Timex retailer or Timex distributor for warranty information. In Canada, the U.S. and in certain other locations, participating Timex retailers can provide you with a postage-paid, pre-addressed Watch Repair Mailer for your convenience in obtaining factory service.

©2007 Timex Corporation. TIMEX is a registered trademark of Timex corporation. INDIGLO is a registered trademark of Indiglo Corporation in the U.S. and other countries.