



Fluidmaster®





Pioneering Innovation for More Than 50 Years

Our company's success began with the desire and drive of founder Adolf Schoepe. Convinced that existing toilet technology was inefficient and unreliable, he sought to create a more advanced fill valve that work with, rather than against, water pressure. Mr Schoepe's vision became a reality when he revolutionised the toilet care industry by successfully launching Fluidmaster's innovative pilot fill valve technology in 1957.

A True Leader in the Industry

Fluidmaster, the leading global supplier of fluid management solutions, is found in more toilets than all other brands combined. As the customers' first choice and an OEM preferred supplier of toilet tank trim, we have been engineering the internal flushing mechanisms of toilets for more than half a century. Built on and inspired by an unsurpassed history of innovation, Fluidmaster has become an icon in the plumbing industry. Our reputation for superior quality continues to grow as we cultivate and support our partnerships with retailers, wholesalers and toilet manufactures, reaffirming the company as a leader in innovation and global supply of sanitary-ware products.

The Global Solution

Fluidmaster's growing global distribution network reaches more than 80% of the world's population and spans over 87 countries. With manufacturing facilities across the globe, Fluidmaster is quick to market, quick to manufacture and quick to deliver with unparalleled quality.



★ Headquarters

◆ Manufacturing / Sales / Distribution

● Sales Office / Distribution

Celebrating 60 Years!



Comprehensive Line of Innovative Toilet Repair Products

Today, Fluidmaster markets more than 67 million toilet repair products annually and sells more toilet tank replacement valves than any other manufacturer in the world.

Our portfolio of toilet repair products include fill valves, flush valves and syphons, waste products, cisterns, pan connectors and more recently, in-wall cisterns, all marketed under our different global family of brands.

Fluidmaster PRO

Page 4

Fluidmaster Fill and Flush Valves

Page 12

Torbeck

Page 25

Delchem

Page 29

Euroflo

Page 30

Fluidmaster Schwab

Page 48

PRO SERIES



Everyone knows that nothing is tougher than a PRO. Now there's a PRO range that's just as tough as you are.

ENGINEERED FOR PROS

**HARDEST
WORKING
BRAND IN THE BUSINESS**



PRO SERIES

PRO SERIES FILL VALVES

The Fluidmaster® PRO Series was developed for the hard working plumbing professional who requires high quality, high performance and excellent durability to meet the highest standards of repair possible.

PRO45B

PRO BOTTOM ENTRY FILL VALVE

- Heavy duty 1/2" brass UK shank
- Height adjustable
230mm-355mm (9"-14")
- Ultra Quiet
- Minimal water hammer
- Long life performance
- Fast refill
- Anti-siphon design prevents contamination of water supply



PRO45BTWIN

PRO BOTTOM ENTRY FILL VALVE TWIN PACK

- PRO45B Twin pack

PRO400UK

PRO BOTTOM ENTRY FILL VALVE

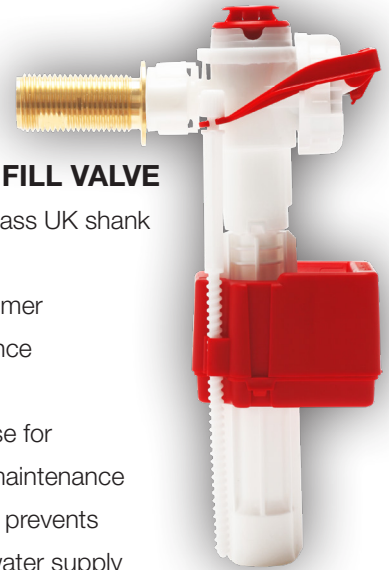
- As PRO45B,
with 1/2" Plastic UK shank



PRO75B

PRO SIDE ENTRY FILL VALVE

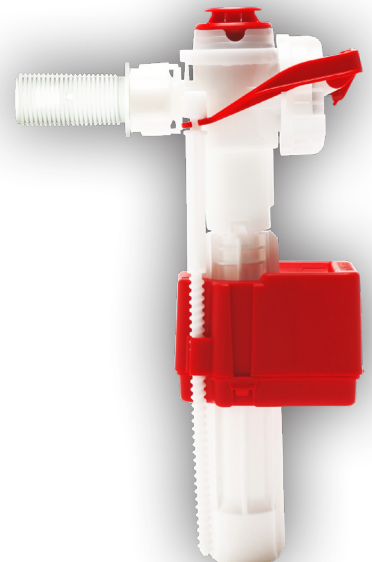
- 1/2" Heavy duty brass UK shank
- Ultra quiet
- Minimal water hammer
- Long life performance
- Fast refill
- Unique snap release for easy access and maintenance
- Anti-siphon design prevents contamination of water supply
- For use in a toilet cistern or storage tank



PRO747UK

PRO SIDE ENTRY FILL VALVE

- As PRO75B, with 1/2" Plastic UK shank



For sales and details of our full product range
Tel: (01432) 357331 email: salesuk@fluidmaster.com web: fluidmasterUK.com

PRO SERIES FLUSH VALVES

PRO550UK

PRO BUTTON DUAL FLUSH VALVE

- Water saving adjustable flush volumes on full and reduced flushes
- Fits both 1 1/2" and 2" flush outlets
- Cable length 350mm
- Dual flush button fits top, front or side applications
- Overflow height is adjustable from 8 1/2" to 13 1/2"
- Quick release cable/button connection eliminates cable damage
- Twist and release action enables simple maintenance



PROSY080

PRO COMPACT SYPHON

- 8" Dual Flush Syphon
- Variable Nominal Full Flushing volumes from 6 litres to 9 litres
- Partial ('half') flush by holding the lever down until flush complete
- Internal overflow
- Leak-free component
- 1 1/2" BSP connecting thread.
- Supplied with 2.5" C-Link



PRO550LC

PRO BUTTON DUAL FLUSH VALVE

- As per PRO550UK, with 550mm cable
- Fits 1 1/2" flush outlets

PRO750UK

PRO LEVER DUAL FLUSH VALVE

- Water saving adjustable flush volumes on full and reduced flushes
- Fits 1 1/2" flush outlet
- Cable length 350mm
- Replaces old style flush valve and lever
- Overflow height is adjustable from 8 1/2" to 13 1/2"
- Quick release cable/lever connection eliminates cable damage
- Twist and release action enables simple maintenance



PROSY090

Key Features

- 9" Dual Flush Syphon
- As per PROSY080

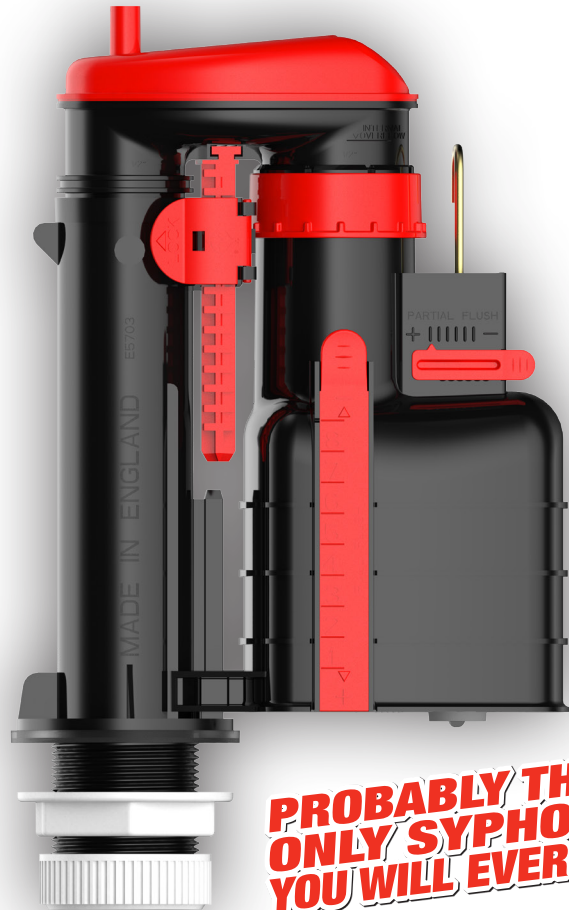
PRO SERIES FLUSH VALVES

PRO ULTRA

UNIVERSAL DUAL FLUSH SYPHON

- Fits virtually all 1 1/2" lever operated cisterns
- Long Lasting Butterfly Diaphragm
- Rapid Height Adjustment
- Fully adjustable from 7.5" – 9.5" (190mm - 240mm)
- Retrofits Other Syphons*
- Comes with a clip-in adapter
- Adjustable Full Flush
- Infinitely adjustable flush volumes
- The only syphon to feature variable part flush
- Optimised flushing dynamics allows easy flush activation
- Twin Flow Performance Cap
- Anti-Turbulence Outlet
- Optimises and increases flow

*See www.fluidmasterUK.com for details



PRO820UK

MECHANICAL DUAL FLUSH VALVE

- Mechanical dual flush valve
- Water saving adjustable flush volumes on full and reduced flushes
- Fits virtually all top button activated cisterns with 2" outlet
- Overflow is height adjustable from 170mm to 250mm
- Easy rod length adjustment
- High quality chrome button with easy flush volume recognition
- Durable silicone seal
- 'Twist & release' action enables simple maintenance



For sales and details of our full product range
Tel: (01432) 357331 email: salesuk@fluidmaster.com web: fluidmasterUK.com



PRO SERIES FILL & FLUSH KITS

PROCP002



PRO UNIVERSAL CISTERN KIT

- PRO Universal Cistern Pack with PRO45B bottom entry fill valve, push-button cable Dual Flush Valve and fittings
- Fits both 1 1/2" and 2" flush outlets
- Fully adjustable fill and flush valves



PROCP001

PRO UNIVERSAL CISTERN KIT

- As PROCP002, with 1/2" Plastic UK shank Fill Valve

PRO71UK

PRO DUAL FLUSH FLAPPER

- Unique adapter works with existing front mounted handle
- 1 1/2" flush outlet
- Dual flush operation
- Light touch activation
- Internal overflow



PRO72UK

PRO DUAL FLUSH FLAPPER

- Top Flush Button Kit
- 2" flush outlet
- Dual Flush operation
- Light touch activation
- Internal overflow



PRO73UK

PRO DUAL FLUSH FLAPPER

- Front or Side square pushbutton kit
- Replaces lever mounted on either front or side of toilet cistern
- 1 1/2" flush outlet
- Dual flush operation
- Light touch activation
- Internal overflow



PRO SERIES COMPACT CISTERNS

FLUIDMASTER® PRO COMPACT CISTERNS have been developed for the hard working plumbing professional featuring the same high quality, professional grade products engineered for the reliability and durability that they have come to expect from FLUIDMASTER®. These compact and easily installable cisterns are exclusively available to the professional plumber through the PRO series of products.

Introducing the most innovative features PRO cisterns ensure the highest standards of quality, performance and efficiency.

Key Features

- Easy install mounting bracket enables easy, fast installation and removal.
- Captive lid enables front and top access for easy maintenance.
- Integral isolation valve enables easy maintenance.
- Specially designed moulded elbow facilitates bottom, side, top and rear water supply.
- Suitable for modern narrow 500mm furniture.
- FLUIDMASTER® 2" outlet high performance dual flush valve with 550mm long cable.
- 'Twist & Release' flush valve action enables easy maintenance.
- 'Click & Release' cable release mechanism enables easy access.
- Water saving 6/4 litre dual flush, adjustable to 4.5/3 litre dual flush.
- Pre-assembled for quick installation.
- Flushpipe, fittings and pan seal included.



PROCN12201C

FLUIDMASTER® COMPACT PRO ECO PRE-ASSEMBLED CISTERN including ELBOW & ISOLATION VALVE

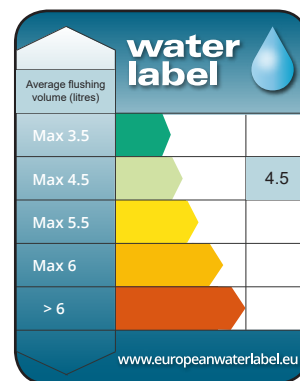
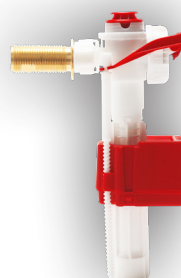
- All key features as above
- ½" shank PRO ECOFIL inlet valve with delayed fill action to save water every time you flush.



PROCN12205C

FLUIDMASTER® COMPACT PRO ECO PRE-ASSEMBLED CISTERN including ELBOW & ISOLATION VALVE

- All key features as above
- Heavy duty ½" Brass shank PRO75B ultra quiet fill valve.
- Unique snap release for easy access and maintenance.



For sales and details of our full product range
Tel: (01432) 357331 email: salesuk@fluidmaster.com web: fluidmasterUK.com

PRO SERIES WASTE TECHNOLOGY

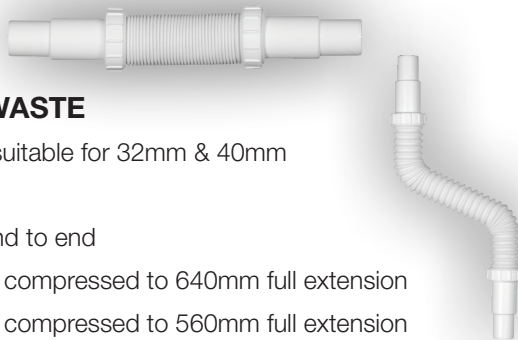
PRO9012



UNIVERSAL FLEXI WASTE

- Universal flexi waste suitable for 32mm & 40mm
- Fixing clips included
- Flexible range from end to end
32mm = 540mm fully compressed to 1500mm full extension
40mm = 460mm fully compressed to 1420mm full extension

PRO9013



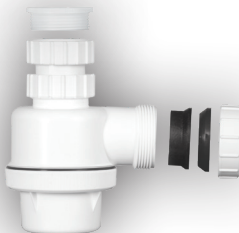
UNIVERSAL FLEXI WASTE

- Universal flexi waste suitable for 32mm & 40mm
- Fixing clips included
- Flexible range from end to end
32mm = 330mm fully compressed to 640mm full extension
40mm = 250mm fully compressed to 560mm full extension

PRO7025

UNIVERSAL COMPACT BOTTLE TRAP

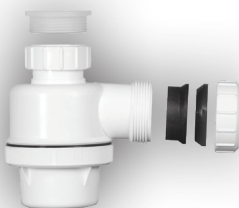
- Universal Telescopic bottle trap
- Anti-Vac
- 32mm (1¼") & 40mm (1½")
in and out - Trap seal depth 76mm



PRO7055

UNIVERSAL COMPACT BOTTLE TRAP

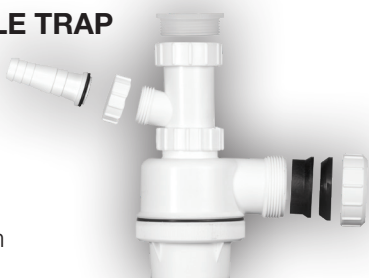
- Universal bottle trap
- Anti-Vac
- 32mm (1¼") & 40mm (1½")
in and out - Trap seal depth 76mm



PRO7058

UNIVERSAL COMPACT BOTTLE TRAP

- Universal Telescopic bottle trap
- With appliance outlet
- Anti-Vac
- 32mm (1¼") & 40mm (1½")
in and out - Trap seal depth 76mm



PROCON001

PRO PAN CONNECTOR

- Long extendable flexible pan connector
300mm-600mm
- Flexible section stainless steel reinforced
- Heavy duty thick wall tubing
- Easy install, supplied with a
WRAS approved grease sachet
- Professional white fins & white seal
- To suite 4" (110mm) plastic pipe

PROCON002

PRO PAN CONNECTOR

- As PROCON001, Short 190mm-300mm



PRO SERIES VOLUMETRIC DATA

SKU	Product Name / Description	Packaging Dimensions H/L/W (mm)	Weight (kg)	Box Quantity	Barcode	Page Number
PRO45B	Bottom Entry Fill Valve	320 x 77 x 77	0.363	25	039961455420	5
PRO45BTWIN	Bottom Entry Fill Valve (Twin Pack)	320 x 112 x 82	0.567	25	2011629016025	5
PRO400UK	Bottom Entry Fill Valve	320 x 77 x 77	0.237	25	039961994028	5
PRO75B	Side Entry Fill Valve	222 x 130 x 55	0.250	40	5060157590101	5
PRO747UK	Side Entry Fill Valve	222 x 130 x 77	0.216	40	5060157590453	5
PRO550UK	Button Operated Dual Flush Valve	270 x 140 x 100	0.362	20	5060157590446	6
PRO550LC	Button Operated Dual Flush Valve	420 x 320 x 90	0.416	20	5060157590460	6
PRO750UK	Lever Operated Dual Flush Valve	270 x 140 x 100	0.457	20	5060157590651	6
PROSY080	8" Dual Flush Compact Syphon	430 x 260 x 95	0.296	24	5060157590736	6
PROSY090	9" Dual Flush Compact Syphon	430 x 260 x 95	0.300	24	5060157590750	6
PRO ULTRA	Universal Dual Flush Syphon	285 x 180 x 85	0.433	20	5011629016544	7
PRO820UK	Mechanical Dual Flush Valve	313 x 130 x 93	0.578	20	5011629016505	7
PROCP001	PRO Universal Cistern Pack	400 x 315 x 80	0.978	15	5060157590477	8
PROCP002	PRO Universal Cistern Pack	317 x 180 x 90	1.140	9	5060157590927	8
PRO71UK	PRO Flapper - Side mounted button	315 x 113 x 80	0.340	25	5060157590330	8
PRO72UK	PRO Flapper - Top mounted button	315 x 113 x 80	0.187	25	5060157590347	8
PRO73UK	PRO Flapper - Front/Side mounted button	315 x 113 x 80	0.348	25	5060157590354	8
PROCN12201C	PRO Compact Concealed Cistern	310 x 337 x 135	2.372	1	5011629015103	9
PROCN12205C	PRO Compact Concealed Cistern	310 x 337 x 135	2.357	1	5011629015110	9
PRO9012	Universal Long Flexi Waste	750 x 120 x 60	0.274	50	5060157590811	10
PRO9013	Universal Short Flexi Waste	470 x 120 x 60	0.276	80	5060157590828	10
PRO7025	Universal Telescopic Bottle Trap	300 x 250 x 90	0.227	50	5060157590790	10
PRO7055	Universal Bottle Trap	300 x 250 x 90	0.179	50	50601575907981	10
PRO7058	Universal Telescopic Bottle Trap	300 x 250 x 90	0.255	50	5060157590804	10
PROCON001	Long Extendable Flexible Pan Connector	400 x 315 x 80	0.590	15	5011629016131	10
PROCON002	Short Extendable Flexible Pan Connector	317 x 180 x 90	0.478	9	5011629016148	10

For sales and details of our full product range
 Tel: (01432) 357331 email: salesuk@fluidmaster.com web: fluidmasterUK.com

Fluidmaster. FILL AND FLUSH VALVES



The fill valve fills the toilet tank with water from the water supply line after it has been emptied by the flush. It replaces the ballcock and is more efficient and easy to install. Replacing an old ballcock fill valve helps to maximise toilet performance and save water.

 **Fluidmaster**®

 **Fluidmaster**[®]

AIRGAP

TOILET FILL VALVES



**A REVOLUTION IN
FILL VALVE TECHNOLOGY**

WWW.FLUIDMASTER-AIRGAP.COM

A REVOLUTION IN TOILET FILL VALVES IS COMING

ARE YOU READY TO JOIN THE REVOLUTION

Fluidmaster AIRGAP valves represent the next generation of toilet fill valves. Developed exclusively with UK water authorities, AIRGAP valves redefine safety and performance standards.

Innovation in visible air gap technology provide the strongest defence against backflow, totally eliminating blue water incidents. Designed for rapid and easy installation AIRGAP valves feature fast-fit height adjustment, no more wet hands. Maintenance is now easier than ever thanks to the no-tools design.

Vortex generation technology produces a spiral flow of water at the outlet - AIRGAP valves are the quietest valves of their type designed for silent operation in all conditions.



BANISH BLUE WATER



DEVELOPED WITH UK WATER AUTHORITIES



SPIRAL FLOW VORTEX-GENERATOR™ FOR QUIET FILL



SAVES WATER EVERY FLUSH UP TO 1 LITRE



FAST-FIT HEIGHT ADJUSTMENT



FITS VIRTUALLY ALL CISTERNS



YEAR WARRANTY



DESIGNED AND ENGINEERED IN THE UK

STANDARD FILL, 1/2" BRASS SHANK
BOTTOM ENTRY



6420-S-001

STANDARD FILL, 1/2" BRASS SHANK
SIDE ENTRY



6720-S-001

STANDARD FILL, 1/2" PLASTIC SHANK
BOTTOM ENTRY



6410-S-001

STANDARD FILL, 1/2" PLASTIC SHANK
SIDE ENTRY



6710-S-001

DELAYED FILL, 1/2" BRASS SHANK
BOTTOM ENTRY



6420-D-001



Fits Virtually All 1/2" or 3/8" Bottom Entry Cisterns



Fits Virtually All 1/2" or 3/8" Side Entry Cisterns



**EASY SERVICE
NO TOOLS REQUIRED**

SPIRAL VORTEX-GENERATOR™ FOR QUIET CISTERN REFILL

UNIQUE FLUIDMASTER AIR-GAP™ TECHNOLOGY TOTALLY ELIMINATES BACKFLOW

FAST-FIT HEIGHT ADJUSTMENT, INSTALLS TO WATER LEVELS BETWEEN 140MM - 240MM

HIGH PERFORMANCE AT HIGH AND LOW PRESSURE

RESISTANT TO PIPE DEBRIS

1/2" OR 3/8" BRASS SHANK FOR EASY INSTALL



DELAYED FILL, 1/2" BRASS SHANK SIDE ENTRY

DELAYED FILL, 1/2" PLASTIC SHANK BOTTOM ENTRY

DELAYED FILL, 1/2" PLASTIC SHANK SIDE ENTRY

DELAYED FILL, 3/8" BRASS SHANK BOTTOM ENTRY

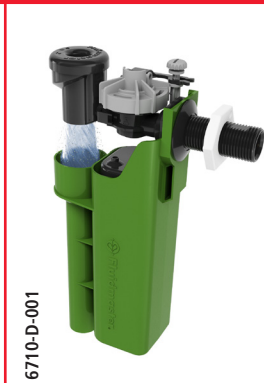
DELAYED FILL, 3/8" BRASS SHANK SIDE ENTRY



6720-D-001



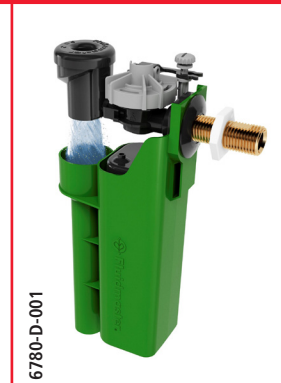
6410-D-001



6710-D-001



6480-D-001



6780-D-001

AIRGAP

TOILET FILL VALVES

A REVOLUTION IN FILL VALVE TECHNOLOGY



FILL VALVE WITH DELAYED ACTION BOTTOM ENTRY

6420-D-001 1/2" BRASS
6480-D-001 3/8" BRASS
6410-D-001 1/2" PLASTIC

- Unique Fluidmaster AIR-GAP technology totally eliminates backflow
- Fast-fit height adjustment, installs to water levels between 140mm-240mm
- Spiral Vortex Generator for quiet cistern refill
- Easy service no tools required
- High performance at high and low pressure
- Saves water every flush up to 1 litre



FILL VALVE BOTTOM ENTRY

6420-S-001 1/2" BRASS
6410-S-001 1/2" PLASTIC

- Unique Fluidmaster AIR-GAP technology totally eliminates backflow
- Fast-fit height adjustment, installs to water levels between 140mm-240mm
- Spiral Vortex Generator for quiet cistern refill
- Easy service no tools required
- High performance at high and low pressure

FILL VALVE WITH DELAYED ACTION SIDE ENTRY

6720-D-001 1/2" BRASS
6780-D-001 3/8" BRASS
6710-D-001 1/2" PLASTIC

- Unique Fluidmaster AIR-GAP technology totally eliminates backflow
- Spiral Vortex Generator for quiet cistern refill
- Easy service no tools required
- High performance at high and low pressure
- Saves water every flush up to 1 litre



FILL VALVE SIDE ENTRY

6720-D-001 1/2" BRASS
6710-D-001 1/2" PLASTIC

- Unique Fluidmaster AIR-GAP technology totally eliminates backflow
- Spiral Vortex Generator for quiet cistern refill
- Easy service no tools required
- High performance at high and low pressure



SKU	Product Name / Description	Packaging Dimensions H/L/W (mm)	Weight (kg)	Box Quantity	Barcode	Page Number
6420-S-001	Non Delay, 1/2", Brass Shank, Bottom Entry	347 x 112 x 67	0.390	30	5011629023009	16
6720-S-001	Non Delay, 1/2", Brass Shank, Side Entry	226 x 156 x 68	0.300	30	5011629023023	16
6420-D-001	Delayed Fill 1/2", Brass Shank, Bottom Entry	347 x 112 x 67	0.390	30	5011629023030	16
6720-D-001	Delayed Fill 1/2", Brass Shank, Side Entry	226 x 156 x 68	0.300	30	5011629023047	16
6410-S-001	Non Delay, 1/2", Plastic Shank, Bottom Entry	347 x 112 x 67	0.310	30	5011629023054	16
6710-S-001	Non Delay, 1/2", Brass Shank, Side Entry	226 x 156 x 68	0.220	30	5011629023061	16
6410-D-001	Delayed Fill 1/2", Plastic Shank, Bottom Entry	347 x 112 x 67	0.310	30	5011629023078	16
6710-D-001	Delayed Fill 1/2", Plastic Shank, Side Entry	226 x 156 x 68	0.220	30	5011629023085	16
6480-D-001	Delayed Fill 3/8", Brass Shank, Bottom Entry	347 x 112 x 67	0.390	30	5011629023221	16
6780-D-001	Delayed Fill 3/8", Brass Shank, Side Entry	226 x 156 x 68	0.300	30	5011629023238	16

FILL VALVES



400UK073

BOTTOM ENTRY FILL VALVE

- Bottom entry fill valve with 1/2" plastic shank

400UK074

BOTTOM ENTRY FILL VALVE

- As 400UK073, blister style packaging

400LB074

BOTTOM ENTRY FILL VALVE

- Bottom entry fill valve with 1/2" heavy duty brass shank



400EL

BOTTOM ENTRY FILL VALVE

- Bottom entry fill valve with 3/8" heavy duty brass shank



747UK073

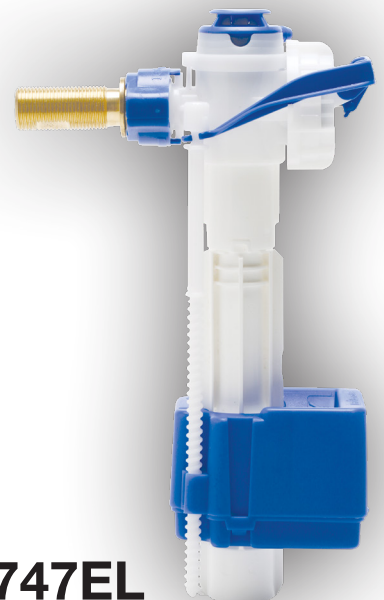
SIDE ENTRY FILL VALVE WITH 1/2" PLASTIC SHANK

- Side entry fill valve with 1/2" plastic shank

747UK074

SIDE ENTRY FILL VALVE WITH 1/2" PLASTIC SHANK

- As 747UK073, blister style packaging



747EL

SIDE ENTRY FILL VALVE

- Side entry fill valve with 3/8" heavy duty brass shank

FLUSH VALVES



550073

FLUIDMASTER DUAL FLUSH VALVE

- Button cable dual flush valve
- Top, side or front mounted
- Fits 1 1/2" & 2" flush outlets
- Adjustable overflow

550074

FLUIDMASTER DUAL FLUSH VALVE

- As 550073, blister style packaging

507UKK071

FLUIDMASTER DUAL FLUSH FLAPPER

- Dual flush flapper valve with handle adapter
- 1 1/2" Flush outlet



507UKK072 / 507UKK076

FLUIDMASTER DUAL FLUSH FLAPPER

- Dual flush flapper valve
- 2" Flush outlet
- Top push button kit



507UKK073 / 507UKK074

FLUIDMASTER DUAL FLUSH FLAPPER

- Dual flush flapper valve
- 1 1/2" Flush outlet
- Front or side square push button kit



820074

MECHANICAL DUAL FLUSH VALVE

- Mechanical dual flush valve
- Water saving adjustable flush volumes on full and reduced flushes
- Fits virtually all top button activated cisterns with 2" outlet



750074

FLUIDMASTER LEVER DUAL FLUSH VALVE

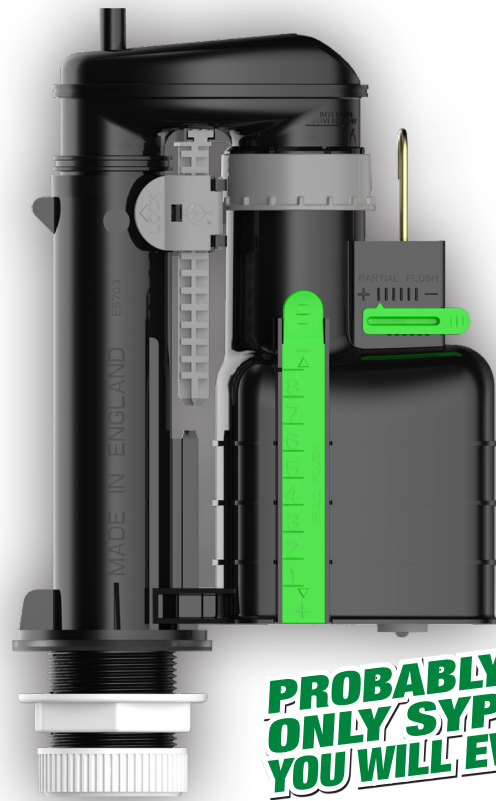
- Lever cable dual flush valve
- Front or side mounted lever
- Fits 1 1/2" Flush outlet
- Adjustable overflow

FLUSH VALVES

ULTRASY074

ULTRA UNIVERSAL DUAL FLUSH SYPHON

- Fits virtually all 1 1/2" lever operated cisterns
- Long lasting butterfly diaphragm
- Rapid height adjustment
- Fully adjustable from 7.5" – 9.5" (190mm - 240mm)
- Retrofits other syphons*
- Comes with a clip-in adapter
- Adjustable full flush
- Infinitely adjustable flush volumes
- The only syphon to feature variable part flush
- Optimised flushing dynamics allows easy flush activation
- Twin flow performance cap
- Anti-turbulence outlet



PROBABLY THE ONLY SYPHON YOU WILL EVER NEED!

FILL & FLUSH VALVE KITS

4550074

FLUIDMASTER BUTTON DUAL FLUSH & FILL VALVE KIT

- Anti-siphon prevents contamination of water supply
- Fits both 1 1/2" and 2" flush outlets
- Quick release button eliminates cable damage
- Fully height adjustable fill valve



4750074

FLUIDMASTER LEVER DUAL FLUSH & FILL VALVE KIT

- As per 4550074
- Fits 2" flush outlets
- Quick release lever eliminates cable damage

400UKK074

FLUIDMASTER FLAPPER FILL & FLUSH VALVE KIT

- Long life performance
- Simple dual flush gives a water saving flush every time
- Light touch pushbutton operation
- Fully height adjustable fill valve



400UKK077

FLUIDMASTER FLAPPER FILL & FLUSH VALVE KIT

- Long life performance
- Simple dual flush gives a water saving flush every time
- Light touch pushbutton operation
- Unique adaptor works with existing front mounted handle
- Fully height adjustable fill valve



COMPACT CONCEALED CISTERNS

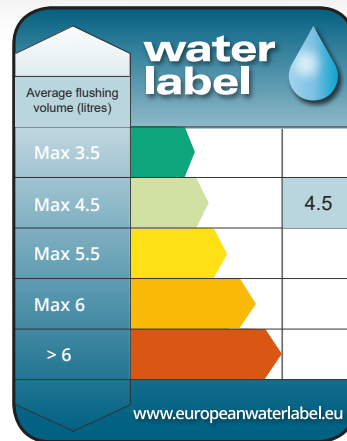
- Easy install mounting bracket enables easy, fast installation and removal.
- Captive lid enables front and top access for easy maintenance.
- Specially designed moulded elbow facilitates bottom, side, top and rear water supply.
- Suitable for modern narrow 500mm furniture.
- FLUIDMASTER® 2" outlet high performance dual flush valve with 550mm long cable.
- 'Twist & Release' flush valve action enables easy maintenance.
- 'Click & Release' cable release mechanism enables easy access.
- Water saving 6/4 litre dual flush, adjustable to 4.5/3 litre dual flush.
- Flushpipe, fittings and pan seal included.



CN12200C

COMPACT PRE-ASSEMBLED CISTERN including ELBOW & ISOLATION VALVE

- Pre-assembled for quick installation
- ½" shank Fluidmaster 747UK ultra quiet fill valve
- Unique snap release for easy access and maintenance
- Integral isolation valve enables easy maintenance



CN12203C

COMPACT CISTERN including ELBOW

- Supplied un-assembled
- TORBECK ½" quiet fill side inlet valve

EXPOSED CISTERNS



ECSE001

FLUIDMASTER EXPOSED CISTERN

- White classic exposed cistern
- ½" shank Fluidmaster 747UK ultra quiet fill valve
- Unique snap release for easy access and maintenance
- FLUIDMASTER® 1 1/2" outlet high performance dual flush valve with 350mm long cable
- 'Twist & Release' flush valve action enables easy maintenance

SPARES AND ACCESSORIES RANGE

FLUIDMASTER SPARES

C220
Replacement Dual Flush Button

C519
Replacement Dual Flush Lever

R220113
Replacement Flush Seal

242MP071
Fluidmaster Fill Valve Diaphragm
For 400 & 747 Valves

502074
Flapper Adjust-A-Flush

694UK074
Square Chrome Button
& Brass Arm Assembly

782
Round Top Button

22675
Spare Button & Rod for
Fluidmaster 820 valve

OVERFLOW STAND PIPE

BQ0020
For WC external overflow
warning pipe

TORBECK

ACC0053
Fill Valve Diaphragm

K515100
Drop Valve Diaphragm Seal

LEVER

ACC0002
Chrome Cistern Lever

ACC0003
Chrome/Ceramic Lever

BQ0023
Gold/Ceramic Lever

BQ0025
Concealed Lever Kit

SIPHON DIAPHRAGM

ACC0027
Delchem Siphon Diaphragm

BOLT SET & CONE WASHERS

ACC0017
Bolt Set With Cone Washers

FULL CHROME DROP VALVE BUTTON

ACC0035
Full Chrome Drop Valve
Button

PLUG/BUNG

ACC0054
Multi Purpose Cistern Bung

WASHER

ACC0036
Drop Valve Washer

ACC0026
Doughnut Washer

COUPLING KIT

ACC0019
Coupling Kit

FLUSH CONE

ACC0018
Internal Flush Cone



R220113



502074



C220



C519



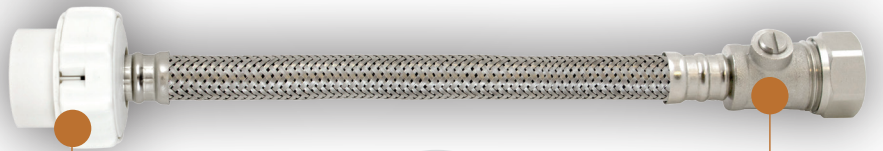
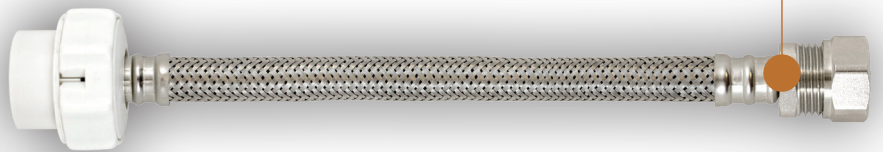
242MP071

CLICK SEAL FLEXIBLE HOSE CONNECTORS



CLICK SEAL

Fits standard
15mm pipe
compression fitting



Fits standard
1/2" BSP
toilet fill valve
or tap thread

**FITS TAPS
AND
TOILETS**

1/4 Turn
Isolator Valve
(1TF300UKCSV)

**TWIST
"CLICK"
SEAL™**
THE "CLICK" LETS YOU KNOW
IT'S SEALED.®

Only Fluidmaster Click Seal connectors click and stop tightening when the nut has achieved a perfect seal

No Leaks - Guarantee

Easy to install, no tools required for Click Seal nut, tighten by hand

Stainless Steel braiding provides maximum protection against bursting

Durable brass thread for secure connections

1TF300UKCS

Key Features

- 300mm Length
- 1/2" BSP to 15mm Compression
- Flexible Hose Connector

1TF500UKCS

Key Features

- 500mm Length
- 1/2" BSP to 15mm Compression
- Flexible Hose Connector

1TF300UKCSV

Key Features

- 300mm Length
- 1/2" BSP to 15mm Compression
- Flexible Hose Connector
- Isolation Valve



FILL AND FLUSH VALVES

SKU	Product Name / Description	Packaging Dimensions H/L/W (mm)	Weight (kg)	Box Quantity	Barcode	Page Number
400UK073	Bottom Entry Fill Valve	317 x 77 x 77	0.238	25	039961702050	17
400UK074	Bottom Entry Fill Valve (Blister)	328 x 158 x 80	0.255	360	0039961704009	17
400EL	BE Fill Valve with 3/8" Brass Shank	320 x 77 x 77	0.280	25	0039961994011	17
400LB074	BE Fill Valve with 1/2" Brass Shank	327 x 152 x 80	0.327	360	5060157590187	17
747UK073	Side Entry Fill Valve	240 x 133 x 55	0.216	20	039961747730	17
747UK074	Side Entry Fill Valve (Blister)	331 x 157 x 75	0.247	360	0039961747747	17
747EL	SE Fill Valve with 3/8" Brass Shank	240 x 132 x 55	0.242	20	0039961974747	17
550073	Button Operated Dual Flush Valve	270 x 140 x 100	0.362	20	5011629016612	18
550074	Button Operated DFV (Blister)	332 x 165 x 87	0.510	260	5060157590040	18
750074	Lever Operated Dual Flush Valve	332 x 165 x 87	0.460	260	5060157590682	18
507UUK071	Flapper DFV with 1 1/2" Outlet	332 x 115 x 81	0.325	25	0039961507716	18
507UUK072	Flapper DFV with 2" Outlet	332 x 115 x 82	0.187	25	0039961507723	18
507UUK073	Flapper DFV with 1 1/2" Outlet	333 x 115 x 83	0.345	25	0039961735072	18
507UUK074	Flapper DFV with 1 1/2" Outlet (Blister)	335 x 153 x 80	0.353	350	0039961725073	18
507UUK076	Flapper DFV with 2" Outlet (Blister)	335 x 153 x 80	0.279	350	0039961507761	18
ULTRAS074	Universal Dual Flush Syphon	385 x 240 x 95	0.495	132	5011629016537	19
CN12200C	Compact Concealed Cistern	380 x 415 x 137	2.378	1	5011629014939	20
CN12203C	Compact Concealed Cistern with elbow	380 x 405 x 140	2.292	1	5011629014960	20
400UUK074	Fill & Flapper Valve Kit	340 x 210 x 85	0.576	210	0039961740014	19
400UUK077	Fill & Flapper Valve Kit	345 x 210 x 85	0.578	210	0039961400772	19
4750074	Fill & Flush Valve Kit	334 x 260 x 86	0.700	165	5060157590880	19
4550074	Fill & Flush Valve Kit	334 x 260 x 86	0.756	165	5060157590323	19
820074	Mechanical Dual Flush Valve (Blister)	365 x 70 x 93	0.616	165	5011629016490	18

BE = Bottom Entry SE = Side Entry DFV = Dual flush valve

CLICK SEAL FLEXIBLE HOSE CONNECTORS

SKU	Product Name / Description	Packaging Dimensions H/L/W (mm)	Weight (kg)	Box Quantity	Barcode	Page Number
1TF300UKCS	300mm Flexible Hose Connector	310 x 42 x 42	0.129	25	5011629015684	22
1TF500UKCS	500mm Flexible Hose Connector	510 x 42 x 42	0.155	25	5011629015691	22
1TF300UKCSV	300mm Flexible Hose Connector with ISO	310 x 42 x 42	0.149	25	5011629015707	22

ISO = Isolation Valve

SPARES AND ACCESSORIES RANGE

SKU	Product Name / Description	Packaging Dimensions H/L/W (mm)	Weight (kg)	Box Quantity	Barcode	Page Number
C220	Fluidmaster Dual Flush Push Button	110 x 80 x 60	0.041	250	5060157590309	21
C519	Fluidmaster Lever for Dual Flush Valve	145 x 105 x 35	0.037	250	5011629019897	21
R220113	Replacement Push Button & Flush Seal for Fluidmaster DFV's	232 x 97 x 77	0.073	1000	5060157590484	21
242MP071	Replacement Seal Multi Pressure for Fluidmaster 400 & 747 Valves	145 x 54 x 30	0.010	10	039961702432	21
502074	Adjust-A-Flush Flapper	156 x 156 x 70	0.069	10	039961705020	21
694UK074	Square Chrome Button & Brass Arm	250 x 110 x 45	0.081	10	5011629019927	21
782	Top Flush Mount Push Button	150 x 110 x 45	0.056	250	5011629019903	21
BQ0020	Overflow Stand Pipe	441 x 90 x 43	0.061	50	5011629012775	21
ACC0017	Stainless Steel Bolt Set	250 x 80 x 30	0.091	100	5011629001915	21
ACC0053	Torbeck Diaphragm	145 x 54 x 30	0.009	1000	5011629016414	21
K515100	Silicone Seal	65 x 65 x 3	0.008	50	5011629019910	21
ACC0002	Chrome Plated Cistern Lever	190 x 120 x 35	0.153	50	5011629001250	21
ACC0003	Chrome Ceramic Cistern Lever	250 x 80 x 35	0.249	25	5011629001267	21
BQ0023	Gold Finish and White Cistern Lever	190 x 138 x 35	0.268	50	5011629012805	21
BQ0025	Concealed Cistern Replacement Lever	460 x 135 x 50	0.415	20	5011629012829	21
ACC0027	Delchem Siphon Diaphragm	250 x 80 x 1	0.005	100	5011629010252	21
ACC0035	Chrome Variflush Dual Flush Button	160 x 130 x 70	0.042	20	5011629009935	21
ACC0054	Multi Purpose Cistern Bung	250 x 80 x 35	0.022	200	5011629013673	21
ACC0036	Variflush Seal	80 x 80 x 2	0.007	100	5011629019880	21
ACC0026	Doughnut Seal Washer	250 x 80 x 20	0.050	50	5011629010320	21
ACC0019	Coupling Kit & Doughnut Seal Washer	210 x 165 x 25	0.190	40	5011629008921	21
ACC0018	Internal Flush Cone	70 x 70 x 28	0.023	500	5011629008341	21
22675	Button & Rod for 820 valve	235 x 55 x 55	0.048	10	5011629017220	21

BE = Bottom Entry SE = Side Entry DFV = Dual flush valve



TORBECK FILL AND FLUSH VALVES



Torbeck has been at the forefront of UK toilet repair for over 40 years. Products are synonymous with reliability; ease of installation and a modern approach to practical innovation.

Torbeck® Fill Valves

Bottom Entry Fill Valves

- Exceptional performance at Low pressures
- Small footprint allows for fitting into small cisterns
- Quiet fill & Fast fill
- Height adjustable
- Removable filter
- Anti-siphon design



B661AT1/2B

1/2" BRASS

B661AT3/8B

3/8" BRASS



B661AT

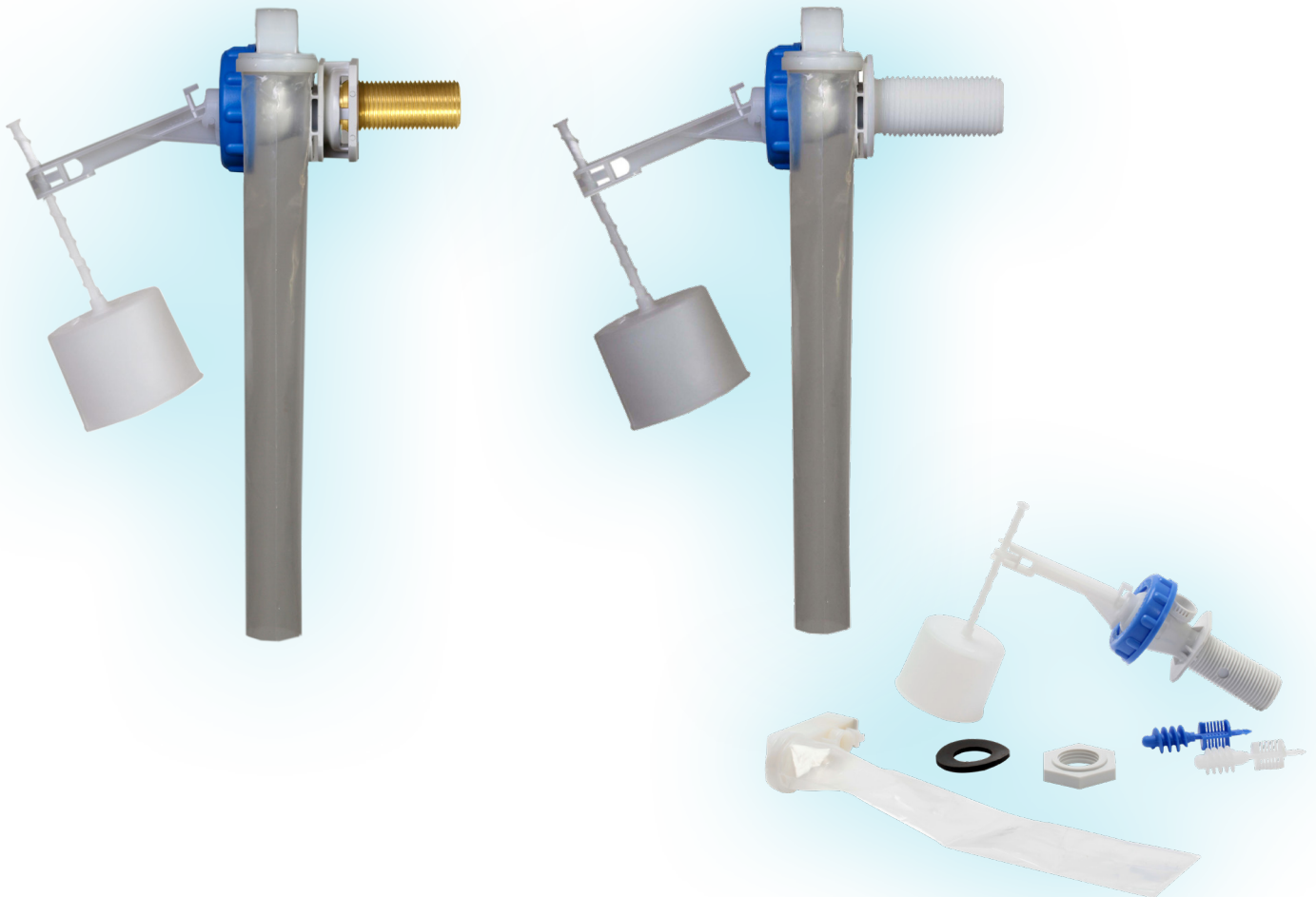
1/2" PLASTIC



Torbeck® Fill Valves

Side Entry Fill Valves

- Exceptional performance at Low Pressures
- Small footprint allows for fitting into small cisterns
- Quiet fill & Fast fill
- Removable filter
- Anti-siphon design



B610-1/2B

1/2" BRASS

B610-3/8B

3/8" BRASS

B610

1/2" PLASTIC

Torbeck® Flush Valves

- Adjustable full flush volumes
- Chrome activation button
- Lever or button mounting top and front
- Internal overflow
- Easy maintenance

ADP301

35CM CABLE, 1 1/2" OUTLET,
DUAL FLUSH

ADP521

52CM CABLE, 1 1/2" OUTLET,
DUAL FLUSH

ADP302

35CM CABLE, 2" OUTLET,
DUAL FLUSH

ADP522

52CM CABLE, 2" OUTLET,
DUAL FLUSH



Torbeck® Volumetric Data

SKU	Product Name / Description	Packaging Dimensions H/L/W (mm)	Weight (kg)	Box Quantity	Barcode	Page Number
B661AT	Torbeck BE Adjustable 1/2"	390 x 170 x 50	0.159	25	5011629002035	26
B661AT1/2B	Torbeck BE Adjustable 1/2" Brass	400 x 166 x 50	0.248	25	5011629014137	26
B661AT3/8B	Torbeck BE Adjustable 3/8" Brass	400 x 166 x 50	0.233	25	5011629014267	26
B610	Torbeck SE 1/2"	210 x 175 x 50	0.080	25	5011629011969	27
B610-1/2B	Torbeck SE 1/2" Brass	210 x 170 x 50	0.168	25	5011629014144	27
B610-3/8B	Torbeck SE 3/8" Brass	185 x 170 x 50	0.160	25	5011629014151	27
ADP301	Torbeck DFV 1 1/2" Outlet	410 x 250 x 88	0.377	25	5011629010665	28
ADP302	Torbeck DFV 2" Outlet	410 x 250 x 88	0.382	25	5011629010931	28
ADP521	Torbeck DFV 1 1/2" Outlet	410 x 250 x 88	0.413	25	5011629010924	28
ADP522	Torbeck DFV 2" Outlet	410 x 250 x 88	0.425	25	5011629010917	28

BE = Bottom Entry SE = Side Entry DFV = Dual flush valve



delchem

The Delchem range of fill and flush technology has been designed to provide the hard working professional with durable, reliable product that will not let you down



B704A 8½" Height
B706A 9½" Height

Straight Pedestal Ball Valves

- Adjustable lever arm 6" - 9"
- ½" Bottom Entry
- Anti-siphon design prevents contamination of fresh water supply



B741A 9" Height
B753A 9½" Height

Offset Pedestal Ball Valves

- Adjustable lever arm 6" - 9"
- ½" Bottom Entry
- Anti-siphon design prevents contamination of fresh water supply



B801A

Side Inlet Ball Valve

- Adjustable lever arm 6" - 9"
- Anti-siphon design prevents contamination of fresh water supply
- ½" Side Entry



DFA07525 7½" Height
DFA08025 8" Height
DFA09025 9" Height
DFA09525 9½" Height

Dual Flush Siphon with Internal Overflow

- Dual Flush
- Adjustable full flush volumes
- Flush Outlet Size 1-½"
- Internal Overflow
- Water saving

Volumetric Data

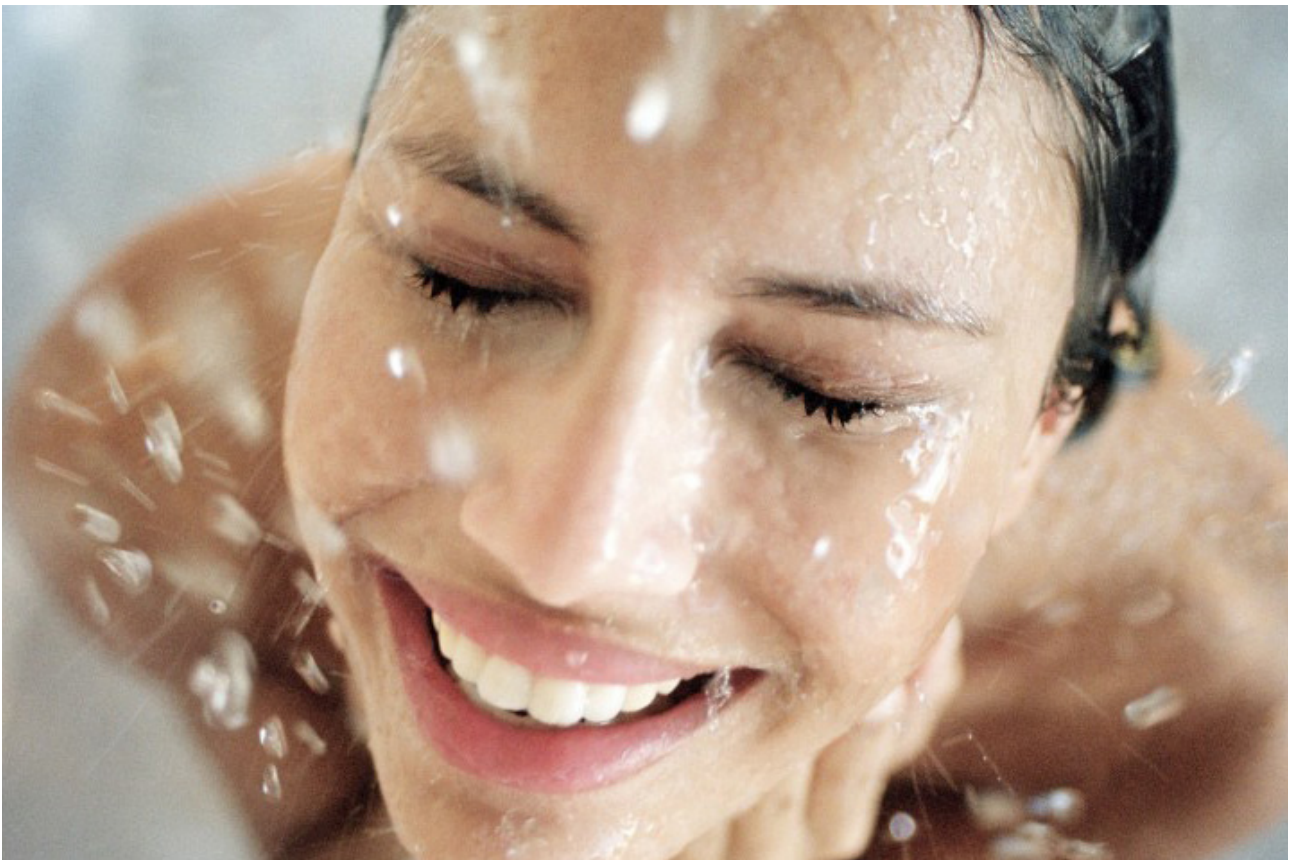
SKU	Product Name / Description	Packaging Dimensions H/L/W (mm)	Weight (kg)	Box Quantity	Barcode	Page Number
B704A	8.5" Delchem Adjustable Arm	367 x 135 x 50	0.166	25	5011629002066	29
B706A	9.5" Delchem Adjustable Arm	400 x 143 x 50	0.183	25	5011629002059	29
B741A	9" Delchem Adjustable Arm Offset	390 x 135 x 50	0.176	25	5011629002073	29
B753A	9.5" Delchem Adjustable Arm Offset	390 x 135 x 50	0.179	25	5011629002080	29
B801A	Side Entry Adjustable Arm	210 x 140 x 50	0.116	25	5011629002097	29
DFA07525	Dual Flush Siphon 7.5"	380 x 265 x 92	0.285	20	5011629012157	29
DFA08025	Dual Flush Siphon 8"	400 x 265 x 92	0.292	20	5011629012164	29
DFA09025	Dual Flush Siphon 9"	410 x 265 x 92	0.297	20	5011629012171	29
DFA09525	Dual Flush Siphon 9.5"	410 x 265 x 92	0.304	20	5011629012188	29

Euroflo

By  Fluidmaster.

FIX IT RIGHT
With  Fluidmaster.

Fluidmaster offer an extensive range of wastes and traps, including the precision engineered Euroflo range, which includes Shower Traps, Pan Connectors, Bottle Traps plus Pushfit and Unifix connectors to cater for every installers needs



Euroflo

By  Fluidmaster.

FIX IT RIGHT
With  Fluidmaster.

Euroflo SHOWER TRAPS

- Fast flow rate up to 36l/min
- 50mm seal depth
- Patented design, 90mm in height

SHOWER TRAPS



SWT001

- Designed for Modern 90mm Shower Trays
- Top Access Shower Trap
- Easy to Clean and Maintain
- Quick Release Inner Unit, Tool Free Accessibility
- 24l/min Flow Rate



ZB36410DB

120mm Chrome Dome
White flange
40mm outlet



ZB36310DB

75mm Chrome Dome
70mm White flange
40mm outlet



ZB36450DB

120mm White Dome
White flange
40mm outlet



ZB36315DB

70mm Chrome Dome
85mm Chrome flange
40mm outlet



ZB36320DB

Chrome Grid
70mm flange
40mm outlet



ZB36380DB

Chrome Waste
85mm flange
40mm outlet

Euroflo

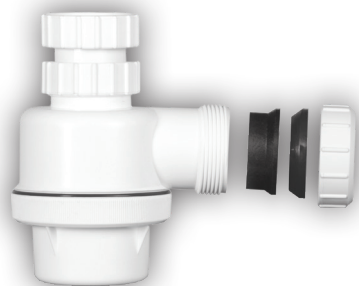
By  Fluidmaster.

FIX IT RIGHT
With  Fluidmaster.

Euroflo BOTTLE TRAPS

- Quick and easy to fit
- Requires no solvent welding
- Universal compression fittings comply with BS1455 and BS1451

BOTTLE TRAPS



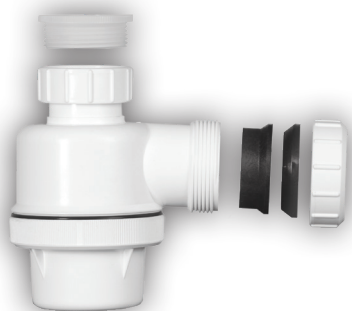
TELESCOPIC BOTTLE TRAPS ALL 76MM SEAL, ANTI-VAC

ZB37024DB

Telescopic bottle trap. 40mm (1½") inlet and outlet. 76mm seal anti-vac.

ZB37025DB

Telescopic Universal bottle trap with adaptors. 40mm (1½") in and out 32mm (1¼") in and out. 76mm seal anti-vac.



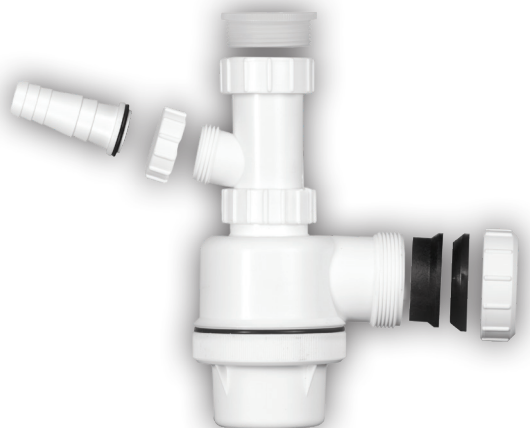
FIXED HEIGHT BOTTLE TRAPS ALL 76MM SEAL, ANTI-VAC

ZB37053DB

Fixed height bottle trap. 40mm (1½") inlet and outlet. 76mm seal anti-vac.

ZB37055DB

Fixed height Universal bottle trap with adaptors. 40mm (1½") in and out and 32mm (1¼") in and out. 76mm seal anti-vac.



TELESCOPIC BOTTLE TRAPS WITH APPLIANCE OUTLET, ALL 76MM SEAL, ANTI-VAC

ZB37059DB

Telescopic bottle trap with appliance outlet. 40mm (1½") inlet and outlet. 76mm seal anti-vac.

ZB37058DB

Telescopic Universal bottle trap with appliance outlet and adaptors. 40mm (1½") in and out and 32mm (1¼") in and out. 76mm seal, anti-vac.

Euroflo

By  Fluidmaster.

FIX IT RIGHT
With  Fluidmaster.

Euroflo PAN CONNECTORS

- To suit 4" / 110mm pipe
- Made in UK
- Flexible Pan Connectors steel reinforced

FIXED HEIGHT PAN CONNECTORS



ZB38210
Fixed 90° Bend With
Appliance Outlet



ZB38209
Offset



ZB38208
Fixed 90° Bend



ZB38207
Straight



ZB38211
Extension



ZB38212
104°



ZB38213
Space Saving
Swan Neck

FLEXIBLE PAN CONNECTORS



ZB38307
Long Flexible 300-600mm

ZB38306
Short Flexible 200-350mm



ZB38405
90° Long Flexible, 400-730mm

ZB38406
90° Short Flexible, 330-550mm



ZB38407
90° Long Flexible, 400-730mm
With Appliance Outlet

ZB38408
90° Short Flexible, 330-550mm
With Appliance Outlet

Euroflo

By  Fluidmaster.

FIX IT RIGHT
With  Fluidmaster.

Euroflo WASTE TRAPS

- Quick and easy to fit
- Requires no solvent welding
- Universal compression fittings comply with BS1455 and BS1451

P-TRAPS, TWO PIECE



ZB31000DB
P-Trap
38mm Seal
32mm



ZB31002DB
P-Trap
76mm Seal
32mm

ZB31004DB
P-Trap
38mm Seal 40mm

ZB31006DB
P-Trap
76mm Seal 40mm



ZB31010DB
P-Trap with cleaning
eye 76mm seal 40mm

S TRAPS, TWO PIECE



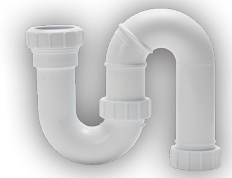
ZB31001DB
S-Trap
38mm Seal 32mm



ZB31003DB
S-Trap
76mm Seal 32mm



ZB31005DB
S-Trap
38mm Seal 40mm



ZB31007DB
S-Trap
76mm Seal 40mm



ZB36002DB
50mm (2" nom)
lowline bath P-Trap with overflow
connection /
cleaning eye 19mm seal 40mm

Euroflo WASTE TRAPS

- Quick and easy to fit
- Requires no solvent welding
- Universal compression fittings comply with BS1455 and BS1451

TELESCOPIC INLET TRAPS



ZB33034DB
P-Trap
38mm seal
40mm
Telescopic inlet



ZB33036DB
P-Trap
76mm seal 40mm
Telescopic inlet

TRAPS FOR BATHS, SHOWERS & BIDETS



ZB36000DB
Shallow P-Trap
no cleaning eye
19mm seal
32mm



ZB36009DB
Shallow P-Trap
with cleaning
eye 40mm

ZB36007DB
Shallow P-Trap
no cleaning eye
19mm seal 40mm

PUSHFIT OVERFLOW SYSTEM 3/4" (19/22mm)



ZB39061DB
Straight
connector



ZB39062DB
90° knuckle bend



ZB39063DB
135° swept bend



ZB39065DB
Straight tank
connector 90mm



ZB39064DB
Tee

Euroflo

By  Fluidmaster.

FIX IT RIGHT
With  Fluidmaster.

Euroflo WASTE TRAPS

- Quick and easy to fit
- Requires no solvent welding
- Universal compression fittings comply with BS1455 and BS1451

APPLIANCE TRAPS AND FITTINGS



ZB33054DB
P-Trap
38mm seal 40mm
600mm upstand pipe



ZB33056DB
P-Trap
76mm seal 40mm
600mm upstand pipe



ZB35066DB
P-Trap
single appliance
inlet 76mm seal 40mm



ZB35067DB
P-Trap
double appliance
inlet 76mm seal 40mm



ZB35068DB
P-Trap w/Tee appliance
inlet 76mm inlet 40mm



ZB39433DB
Tee with washing
machine outlet

RUNNING TRAPS, TWO PIECE



ZB38004DB
Running Trap
38mm seal 40mm



ZB38006DB
Running Trap
76mm seal 40mm

STRAIGHT THROUGH PEDESTAL TRAP



ZB30001DB
Pedestal trap
76mm seal 32mm

Euroflo

By  Fluidmaster.

FIX IT RIGHT
With  Fluidmaster.

Euroflo Polypropylene PUSHFIT

- Pushfit connections quick and easy to fit
- Requires no solvent welding
- Universal compression fittings comply with BS1455 and BS1451

PUSHFIT



ZB39000DB
Push Fit 92.5°
swept bend 32mm



ZB39004DB
Push Fit socket plug
32mm



ZB39007DB
Push Fit 92.5°
knuckle bend 32mm



ZB39030DB
Push Fit conversion
bend 32mm

ZB39020DB
Push Fit 92.5°
swept bend 40mm

ZB39024DB
Push Fit socket plug
40mm

ZB39027DB
Push Fit 92.5°
knuckle bend 40mm

ZB39031DB
Push Fit conversion
bend 40mm



ZB39001DB
Push Fit 135°
obtuse bend 32mm



ZB39003DB
Push Fit Tee coupling
32mm



ZB39002DB
Push Fit straight
coupling 32mm



ZB39041DB
Push Fit reducer
40mm x 32mm

ZB39021DB
Push Fit 135°
obtuse bend 40mm

ZB39023DB
Push Fit Tee coupling
40mm

ZB39022DB
Push Fit straight
coupling 40mm

Euroflo

By  Fluidmaster.

FIX IT RIGHT
With  Fluidmaster.

Euroflo Polypropylene UNIFIX

- Unifix connections quick and easy to fit
- Requires no solvent welding
- Universal compression fittings comply with BS1455 and BS1451

UNIFIX



ZB39400DB
Straight connector
32mm



ZB39404DB
40mm spigot x 32mm
(unifix) reducer



ZB39402DB
90° knuckle
bend 32mm



ZB39008DB
Swivel elbow
32mm

ZB39410DB
Straight connector
40mm

ZB39412DB
90° knuckle
bend 40mm

ZB39028DB
Swivel elbow
40mm



ZB39401DB
135° swept bend
32mm



ZB39416DB
40mm (unifix) x
32mm (unifix)
reducer



ZB39403DB
Swept Tee
32mm



ZB39005DB
Pipe clip
32mm

ZB39411DB
135° swept bend
40mm

ZB39413DB
Swept Tee
40mm

ZB39025DB
Pipe clip
40mm

ZB39042DB
Inlet Tee Unifix
40mm

Euroflo STRAINERS

- Simple to install, operate and maintain
- Robust construction to withstand normal daily use
- Positive seal

STRAINERS



90056/40 - METAL

Chrome Strainer waste with overflow,
swirl basket (boxed)



90066/75J - METAL

STW brushed stainless



90056/01 - PLASTIC

White Strainer waste with overflow,
swirl basket (boxed)



90066/01J - PLASTIC

STW bulk pack white

Euroflo

By  Fluidmaster.

FIX IT RIGHT
With  Fluidmaster.

Euroflo DISPOSER WASTE ASSEMBLY

- Simple to install, operate and maintain
- Robust construction to withstand normal daily use
- Positive seal

DISPOSER WASTE ASSEMBLY



90088/01J - PLASTIC
DWA bulk pack white



90088/06S - METAL
Black disposer waste
swirl basket



90088/75J - METAL
DWA brush stainless

SHOWER TRAPS

SKU	Product Name / Description	Packaging Dimensions H/L/W (mm)	Weight (kg)	Box Quantity	Barcode	Page Number
SWT001	90mm Shower Top Access Trap	103 x 135 x 170	0.383	40	5017706771016	31
ZB36410DB	120mm Shower Trap with chrome dome	110 x 160 x 120	0.347	50	5011629012522	31
ZB36450DB	120mm Shower Trap with white dome	110 x 155 x 120	0.348	50	5011629012539	31
ZB36320DB	70mm Shower Trap with chrome dome	100 x 150 x 110	0.232	50	5011629012485	31
ZB36310DB	75mm Shower Trap with chrome dome	110 x 150 x 100	0.239	50	5011629012461	31
ZB36315DB	70mm Shower Trap with chrome dome	110 x 140 x 100	0.264	50	5011629012478	31
ZB36380DB	85mm Shower Trap with chrome dome	110 x 130 x 100	0.249	50	5011629012560	31

BOTTLE TRAPS

SKU	Product Name / Description	Packaging Dimensions H/L/W (mm)	Weight (kg)	Box Quantity	Barcode	Page Number
ZB37024DB	Telescopic bottle trap	160 x 130 x 90	0.203	10	5011629013215	32
ZB37025DB	Telescopic bottle trap	150 x 130 x 90	0.229	10	5011629013192	32
ZB37053DB	Fixed height bottle trap	130 x 130 x 90	0.166	10	5011629013840	32
ZB37055DB	Fixed height bottle trap	140 x 120 x 90	0.194	10	5011629003155	32
ZB37058DB	Telescopic bottle trap & appliance outlet	200 x 120 x 90	0.250	10	5011629013208	32
ZB37059DB	Telescopic bottle trap & appliance outlet	200 x 130 x 90	0.224	10	5011629013314	32

FIXED HEIGHT PAN CONNECTORS

SKU	Product Name / Description	Packaging Dimensions H/L/W (mm)	Weight (kg)	Box Quantity	Barcode	Page Number
ZB38210	Fixed 90° Bend with Appliance Outlet	320 x 190 x 140	0.361	20	5011629011068	33
ZB38208	Fixed 90° Bend	300 x 175 x 140	0.340	20	5011629011105	33
ZB38209	Offset	125 x 140 x 140	0.207	20	5011629011099	33
ZB38207	Straight	125 x 140 x 140	0.193	20	5011629011082	33
ZB38211	Extension	250 x 115 x 115	0.260	20	5011629011072	33
ZB38212	104°	160 x 140 x 140	0.212	20	5011629011075	33
38213	Space Saving Swan Neck	355 x 140 x 140	0.548	20	5011629015356	33

FLEXIBLE PAN CONNECTORS

SKU	Product Name / Description	Packaging Dimensions H/L/W (mm)	Weight (kg)	Box Quantity	Barcode	Page Number
ZB38307	Long Flexible 300-600mm	260 x 140 x 140	0.499	24	5011629012010	33
ZB38306	Short Flexible 200-350mm	195 x 140 x 140	0.396	32	5011629012232	33
ZB38405	90° Long Flexible 400-730mm	360 x 160 x 140	0.623	12	5011629012249	33
ZB38406	90° Short Flexible 330-550mm	295 x 140 x 170	0.512	12	5011629012256	33
ZB38407	90° Long Flexible with Boss	390 x 140 x 170	0.626	12	5011629012263	33
ZB38408	90° Short Flexible with Boss	325 x 140 x 170	0.538	12	5011629012270	33

P TRAPS - TWO PIECE

SKU	Product Name / Description	Packaging Dimensions H/L/W (mm)	Weight (kg)	Box Quantity	Barcode	Page Number
ZB31000DB	P-Trap 38mm seal with 32mm inlet	125 x 155 x 55	0.092	10	5011629004459	34
ZB31002DB	P-Trap 76mm seal with 32mm inlet	155 x 150 x 55	0.113	10	5011629004480	34
ZB31004DB	P-Trap 38mm seal with 40mm inlet	165 x 135 x 60	0.113	10	5011629004503	34
ZB31006DB	P-Trap 76mm seal with 40mm inlet	160 x 160 x 60	0.140	10	5011629004534	34
ZB31008DB	P-Trap 38mm / 32mm with cleaning eye	165 x 160 x 55	0.140	10	5011629004558	34
ZB31010DB	P-Trap 76mm / 40mm with cleaning eye	170 x 165 x 60	0.144	10	5011629004565	34
ZB36002DB	Lowline Bath P-Trap	150 x 200 x 60	0.150	10	5011629004787	34

S TRAPS - TWO PIECE

SKU	Product Name / Description	Packaging Dimensions H/L/W (mm)	Weight (kg)	Box Quantity	Barcode	Page Number
ZB31001DB	S-Trap 38mm seal with 32mm inlet	160 x 190 x 55	0.121	10	5011629004466	34
ZB31003DB	S-Trap 76mm seal with 32mm inlet	165 x 200 x 55	0.163	10	5011629004497	34
ZB31005DB	S-Trap 38mm seal with 40mm inlet	155 x 200 x 60	0.134	10	5011629004510	34
ZB31007DB	S-Trap 76mm seal with 40mm inlet	170 x 200 x 60	0.200	10	5011629013505	34

TELESCOPIC INLET TRAPS

SKU	Product Name / Description	Packaging Dimensions H/L/W (mm)	Weight (kg)	Box Quantity	Barcode	Page Number
ZB33034DB	P-Trap 38mm seal with 40mm inlet	270 x 170 x 60	0.168	10	5011629004640	35
ZB33036DB	P-Trap 76mm seal with 40mm inlet	290 x 155 x 60	0.187	10	5011629004657	35

TRAPS FOR BATHS, SHOWERS & BIDETS

SKU	Product Name / Description	Packaging Dimensions H/L/W (mm)	Weight (kg)	Box Quantity	Barcode	Page Number
ZB36000DB	Shallow P-Trap 19mm / 32mm	80 x 190 x 55	0.075	10	5011629004770	35
ZB36007DB	Shallow P-Trap 19mm / 40mm	105 x 190 x 60	0.075	10	5011629004800	35
ZB36009DB	Shallow P-Trap with cleaning eye	105 x 190 x 60	0.100	10	5011629004824	35

PUSHFIT OVERFLOW SYSTEM 3/4" (19/22mm)

SKU	Product Name / Description	Packaging Dimensions H/L/W (mm)	Weight (kg)	Box Quantity	Barcode	Page Number
ZB39061DB	Straight Connector	45 x 25 x 25	0.005	10	5011629005203	35
ZB39062DB	90 Degree Knuckle Bend 19mm	25 x 50 x 25	0.007	10	5011629005210	35
ZB39063DB	135 Degree Swept Bend 19mm	80 x 25 x 25	0.013	10	5011629005227	35
ZB39064DB	Tee 19mm	60 x 42 x 25	0.010	10	5011629005234	35
ZB39065DB	Straight Tank Connector	70 x 45 x 45	0.022	10	5011629005241	35

APPLIANCE TRAPS AND FITTINGS

SKU	Product Name / Description	Packaging Dimensions H/L/W (mm)	Weight (kg)	Box Quantity	Barcode	Page Number
ZB33054DB	P-Trap 38mm / 40mm with 600mm pipe	750 x 100 x 150	0.282	10	5011629008945	36
ZB33056DB	P-Trap 76mm / 40mm with 600mm pipe	750 x 100 x 150	0.276	10	5011629004688	36
ZB35066DB	P-Trap single appliance 76mm / 40mm	275 x 190 x 60	0.220	10	5011629004749	36
ZB35067DB	P-Trap double appliance 76mm / 40mm	295 x 190 x 65	0.250	10	5011629004759	36
ZB35068DB	P-Trap with Tee 76mm/ 40mm	200 x 130 x 120	0.212	10	5011629004763	36
ZB39433DB	40mm Tee with washing machine outlet	150 x 120 x 60	0.125	10	5011629005371	36

RUNNING TRAPS - TWO PIECE

SKU	Product Name / Description	Packaging Dimensions H/L/W (mm)	Weight (kg)	Box Quantity	Barcode	Page Number
ZB38004DB	Running Trap 38mm / 40mm	140 x 200 x 60	0.145	10	5011629004947	36
ZB38006DB	Running Trap 76mm / 40mm	160 x 110 x 110	0.172	10	5011629004954	36

PUSHFIT

SKU	Product Name / Description	Packaging Dimensions H/L/W (mm)	Weight (kg)	Box Quantity	Barcode	Page Number
ZB39000DB	92.5° Swept Bend 32mm	100 x 100 x 47	0.041	10	5011629004961	37
ZB39020DB	92.5° Swept Bend 40mm	105 x 105 x 55	0.050	10	5011629005043	37
ZB39001DB	135° Obtuse Bend 32mm	100 x 70 x 47	0.035	10	5011629004978	37
ZB39021DB	135° Obtuse Bend 40mm	100 x 100 x 55	0.046	10	5011629005050	37
ZB39004DB	Socket Plug 32mm	25 x 47 x 47	0.009	10	5011629005005	37
ZB39024DB	Socket Plug 40mm	25 x 55 x 55	0.010	10	5011629005081	37
ZB39003DB	Tee Coupling 32mm	125 x 98 x 47	0.060	10	5011629004992	37
ZB39023DB	Tee Coupling 40mm	130 x 110 x 56	0.072	10	5011629005074	37
ZB39007DB	92.5° Knuckle Bend 32mm	85 x 85 x 47	0.038	10	5011629005029	37
ZB39027DB	92.5° Knuckle Bend 40mm	85 x 85 x 55	0.049	10	5011629005104	37
ZB39002DB	Straight Coupling 32mm	70x 48 x 48	0.031	10	5011629004985	37
ZB39022DB	Straight Coupling 40mm	70 x 55 x 55	0.037	10	5011629005067	37
ZB39030DB	Conversion Bend 32mm	80 x 83 x 47	0.030	10	5011629005128	37
ZB39031DB	Conversion Bend 41mm	85 x 80 x 55	0.040	10	5011629005135	37
ZB39041DB	Reducer 40mm to 32mm	45 x 50 x 50	0.019	10	5011629005142	37

STRAIGHT THROUGH PEDESTAL TRAP

SKU	Product Name / Description	Packaging Dimensions H/L/W (mm)	Weight (kg)	Box Quantity	Barcode	Page Number
ZB30001DB	Straight Through Pedestal Trap	275 x 75 x 75	0.229	10	5011629014052	36

UNIFIX

SKU	Product Name / Description	Packaging Dimensions H/L/W (mm)	Weight (kg)	Box Quantity	Barcode	Page Number
ZB39400DB	Straight Connector 32mm	80 x 55 x 55	0.049	10	5011629005265	38
ZB39410DB	Straight Connector 40mm	82 x 60 x 60	0.055	10	5011629005319	38
ZB39401DB	135° Swept Bend 32mm	115 x 75 x 55	0.053	10	5011629005272	38
ZB39411DB	135° Swept Bend 40mm	120 x 85 x 60	0.061	10	5011629005326	38
ZB39404DB	40mm Spigot to 32mm reducer	75 x 55 x 55	0.032	10	5011629005302	38
ZB39416DB	40mm to 32mm reducer	75 x 60 x 60	0.046	10	5011629005364	38
ZB39402DB	90° Knuckle Bend 32mm	96 x 96 x 55	0.057	10	5011629005289	38
ZB39412DB	90° Knuckle Bend 40mm	100 x 100 x 60	0.070	10	5011629005333	38
ZB39403DB	Swept Tee 32mm	148 x 115 x 55	0.088	10	5011629005296	38
ZB39413DB	Swept Tee 40mm	150 x 115 x 60	0.105	10	5011629005340	38
ZB39042DB	Inlet Tee 40mm	95 x 95 x 55	0.057	10	5011629005159	38
ZB39008DB	Swivel Elbow 32mm	85 x 80 x 55	0.037	10	5011629005036	38
ZB39028DB	Swivel Elbow 40mm	87 x 87 x 60	0.046	10	5011629005111	38
ZB39005DB	Pipe Clip 32mm	60 x 75 x 15	0.007	10	5011629005012	38
ZB39025DB	Pipe Clip 40mm	65 x 80 x 15	0.008	10	5011629005098	38

STRAINERS

SKU	Product Name / Description	Packaging Dimensions H/L/W (mm)	Weight (kg)	Box Quantity	Barcode	Page Number
90056/01/BOX	White Swirl with Overflow	90 x 118 x 118	0.269	10	5011629007702	39
90056/40/BOX	Chrome Swirl with Overflow	90 x 118 x 118	0.337	10	5011629002134	39
90066/01J	Strainer Waste White Plastic	90 x 115 x 115	0.207	78	5011629007733	39
90066/75J	Strainer Waste Brushed Stainless	40 x 115 x 115	0.203	78	5011629007856	37

DISPOSER WASTE ASSEMBLY

SKU	Product Name / Description	Packaging Dimensions H/L/W (mm)	Weight (kg)	Box Quantity	Barcode	Page Number
90088/01J	Plastic	40 x 115 x 115	0.094	78	5011629007979	40
90088/06S	Polished Stainless	40 x 115 x 115	0.099	78	5011629020107	40
90088/75J	Brushed Stainless	40 x 115 x 115	0.197	78	5011629008051	40

100
years of Schwab

Together
we create the
ultimate range
of concealed
systems.



50
years of Fluidmaster



Schwab products are distinguished by technical excellence and design perfection, created for living comfort.

Fluidmaster products deliver ultimate reliability, high performance and minimal maintenance.

Together, these trusted systems allow you to design a superb new modern look to your bathroom. Imagine a sleek new look, easy to clean, ultra reliable, simple to maintain and all completely hidden.

Assurance: Schwab products are designed with your peace of mind as our priority. To this extent, concealed cisterns are supplied with a 10 year guarantee backed with 25 years availability for spare parts. Further, Schwab products comply with the highest European testing standards with concealed cisterns tested through 200,000 flush cycles.

Innovation: Each product that carries the Schwab logo embodies the cutting-edge approach taken with the design and production of the whole range of market leading products. This spirit of innovation in creating outstanding products has arisen from 150 years of combined experience and knowledge in developing sanitary installation solutions.

Achieving a new sense of space and style could not be easier with Schwab concealed systems.

Benefits of concealed flushing cisterns



The Schwab range of concealed cisterns are the perfect choice when designing your new bathroom.

Water saving and silent, yet discretely hidden from view, the range offers the adaptability to achieve the new look you desire through our wide range of flushing plates.



Reliability:
10 years guarantee for concealed cisterns.



Assurance:
25 years availability of original spare parts.



High capacity: correctly installed toilet bowl can easily carry a 400 kg load. Load capacity is tested in renowned German laboratories.



Highly insulated concealed flushing cistern with silent filling valve.



DUPLO concealed systems enable very quick and simple installation, through use of innovative technology features.



Water saving with dual flushing valves installed in flushing cisterns.



Moisture free: flushing cistern is insulated against condensation.



High endurance: flushing cisterns tested to 200,000 cycles (complying to WRAS and EN14055 standards).



SCHWAB products are designed to create a fresh hygienic environment within the washroom. Wall-mounted solutions enable easy cleaning of toilets, basins and bidets.



Touchless flushing represents the optimum solution for hygiene sensitive installations. With SCHWAB Touchless flushing systems, we provide you with the latest technology solutions to provide a clean and convenient operation.

189PR

The Details



The SCHWAB 189PR concealed cistern with frame is a premium solution with outstanding features. The cistern features the silent Fluidmaster 747 valve, designed for ultra-simple maintenance and long-lasting performance. Innovative features make the 189PR the easiest to install and enable a perfect fit in wide ranging applications.

An extensive range of attractive and contemporary plates make this the perfect solution for your modern new bathroom.



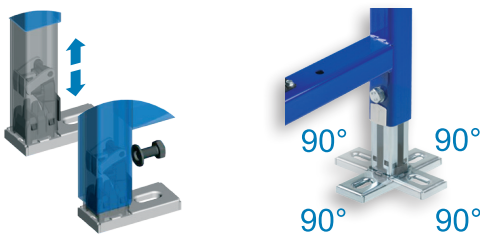
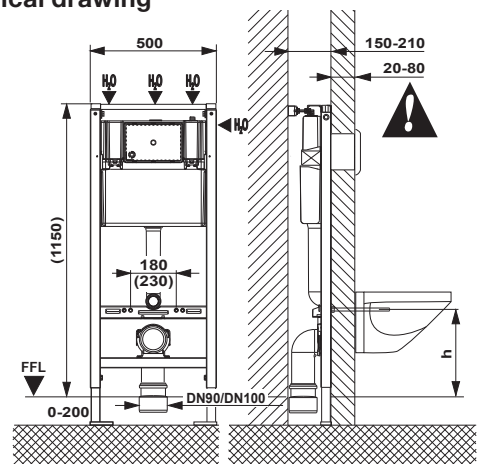
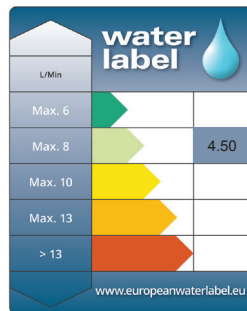
Assurance:

- Activation system and mechanisms tested through 200,000 cycles and certified according to the highest European standards
- Filling and flushing valve fully factory tested and approved
- 10 years guarantee for concealed cisterns
- 25 year availability of replacement parts

Features:

- Water saving (large flush 5 / 6 / 7 litres, reduced flush 3 / 4 litres),
- Silent operation
- Full range of flushing plates designed for any environment; contemporary, versatile and functional
- Easy installation of all components without using tools, support legs equipped with brake and rotating plate (90°)
- System fully insulated with polystyrene for long-lasting performance.

Technical drawing



Flushing plates

High Design flushing plates Caro



High Design flushing plates Circle



Standard flushing plates: Ovate / Ovate Duo Dots / Dots Duo



New flushing plates: Vivo / Dura / Genera / Futura



10 YEARS GUARANTEE	25 YEARS SPARE PARTS	400 kg	SILENT FUNCTION	SIMPLE INSTALLATION
WATER SAVING	HYGIENIC	200.000	HYGIENIC	

COOrd. no.: 674521
VWeight: 14.00 kg
PPackaging: 12 Pcs. / Pallet



187

The Details



The SCHWAB 187 concealed cistern with frame offers an innovative solution for smaller spaces. The design allows fitting of the frame under windows or key bathroom features, whilst retaining full usability and operation.

The range of attractive plates can be mounted on the front or on top of the cistern providing ultimate flexibility for installation.

The 187 cistern features the silent Fluidmaster 747 valve, designed for ultra-simple maintenance and long-lasting performance.



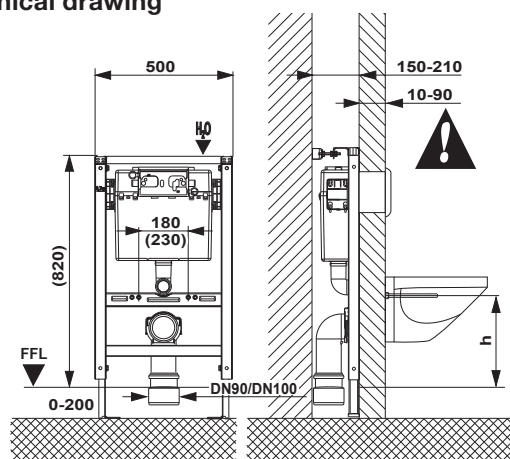
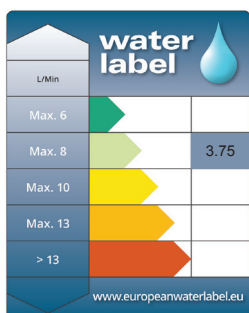
Assurance:

- Activation system and mechanisms tested through 200,000 cycles and certified according to the highest European standards
- Filling and flushing valve fully factory tested and approved
- 10 years guarantee for concealed cisterns
- 25 year availability of replacement parts

Features:

- Water saving 6 / 3 litres
- Silent operation
- Attractive range of flushing plates designed for front or top mounted application
- Compact solution for fitting into smaller spaces
- System fully insulated with polystyrene for long-lasting performance

Technical drawing



Flushing plates



10 YEARS GUARANTEE	25 YEARS SPARE PARTS	400 kg	SILENT FUNCTION	SIMPLE INSTALLATION
WATER SAVING	HYGIENIC	200.000	HYGIENIC	

COOrd. no.: **674526**
 VWeight: 11.50 kg
 PPackaging: 12 Pcs. / Pallet

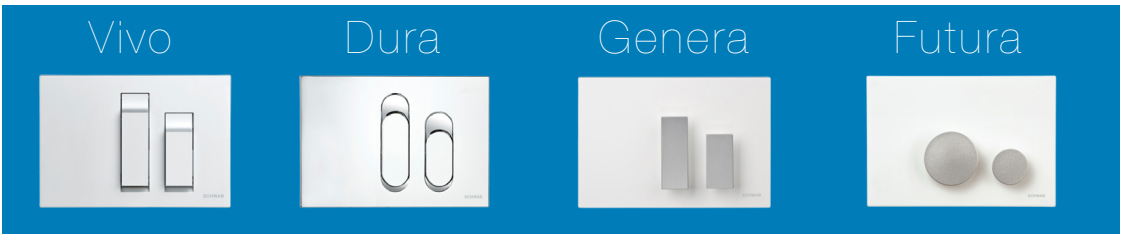


Flushing Plates



The SCHWAB range of flushing plates are designed to complement your modern bathroom look and offer high performance yet water saving features, simple installation and an easy to clean shape.

»
189PR
flushing
cistern



«
new
plates

<p>Caro</p> <p>glass - mint green</p> <p>glass - white</p> <p>glass - black</p> <p>wood look / wenge</p> <p>wood look / zebrano</p> <p>transparent plastic white</p> <p>transparent plastic black</p>	<p>Circle</p> <p>glass - mint green</p> <p>glass - white</p> <p>glass - black</p> <p>wood look / wenge</p> <p>wood look / zebrano</p> <p>transparent plastic white</p> <p>transparent plastic black</p>	<p>Ovate duo</p> <p>white</p> <p>matt chrome</p> <p>gloss chrome</p> <p>Dots duo</p> <p>white</p> <p>matt chrome</p> <p>gloss chrome</p>
--	--	--

189PR flushing cistern

<p>Targa</p> <p>white</p> <p>matt chrome</p> <p>gloss chrome</p> <p>Onda</p> <p>white</p> <p>gloss / matt chrome</p>	<p>Line</p> <p>white</p> <p>matt chrome</p> <p>gloss chrome</p> <p>gloss / matt chrome</p>
--	---

187 flushing cistern



INFINITE POSSIBILITIES - For details of the complete range of plates available and the unique plate configurator, please visit www.fluidmasterUK.com

The Complete Range

We are committed to supporting your bathroom development needs, through our full range of products, we have the solutions for all your requirements. Get the complete modern bathroom look with Schwab.



Elements for wall-hung basins



Elements for wall hung and back to wall toilets



Elements for bidet

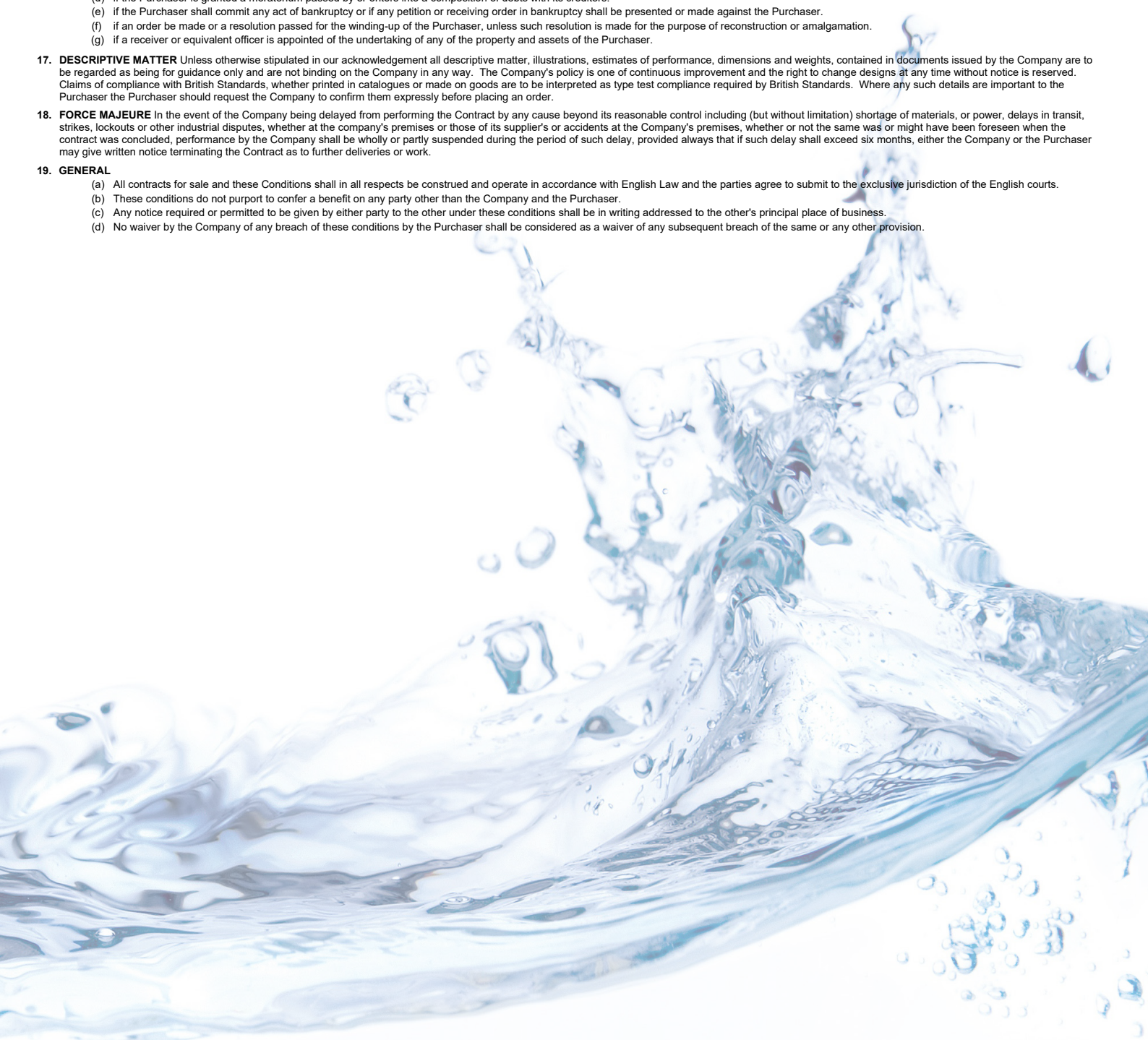


We are committed to supporting our customers through a long-term serviceability programme. As such we will provide original spare parts availability for all product groups: 25 years for concealed flushing cisterns.

Conditions of Sale

1. **GENERAL** These conditions shall apply to all quotations and Contracts for the sale or supply of goods ('the goods') by Opella Limited ('the Company') unless expressly varied or excluded in writing signed by one of the Company Directors. Any terms and conditions contained in the Purchaser's Order or otherwise shall not apply unless expressly agreed in writing. If any of these Conditions or any part thereof is rendered void or unenforceable by any legislation to which it is subject, it shall be so void and unenforceable to that extent and no further.
2. **ACCEPTANCE** All orders whether verbal or in writing are subject to the Company's written acknowledgement and are accepted on the understanding that these Conditions apply. The Purchaser shall be responsible for ensuring the accuracy of the order. Orders accepted may not be cancelled, varied, delayed or suspended without the Company's written consent and on terms which will indemnify the Company for all loss including, but without limitation:-
 - (a) The full cost of parts manufactured or in the course of manufacture less any scrap value.
 - (b) The full cost of raw material and component parts in stock ordered specifically against the Contract less any scrap value.
 - (c) Any cancellation charges suffered by the Company in relation to the cancellation of outstanding material or component part commitments relating to the Contract.
3. **DELIVERY** The Company, whilst making every effort to effect prompt delivery, will not unless otherwise agreed in writing signed by a Director of the Company, be liable for loss or damage occasioned by delay in despatch or delivery howsoever caused, and any dates expressed in the contract or quotation are given subject to the condition. Delivery of the goods shall take place.
 - (a) Where the Company undertakes delivery of the goods, when the goods are unloaded from the Company's vehicle, or that of the designated carrier at the station, or port or location specified by the Purchaser or
 - (b) Where the Purchaser undertakes delivery of the goods, when the goods are loaded on to the Purchaser's vehicle or that of his designated carrier at the Company's premises or other pre-arranged location.
4. **PRICES**
 - (a) Unless otherwise stated in the Contract all prices in quotations, acknowledgements and contracts are exclusive of VAT and apply to goods packed in standard packaging. Deliveries to the value of £500 or more will be made carriage paid to any premises of the Purchaser in the United Kingdom, save that goods consigned at the Purchaser's request by passenger train, special carrier service, or air freight, will be charged at extra. Deliveries to premises other than the Purchasers are subject to a surcharge.
 - (b) The Company may at any time before delivery increase the price of the undelivered balance of Goods by notice in writing to the Purchaser. In such event the Purchaser may within seven days of receipt of such notice by notice in writing cancel the order so far as the undelivered balance of the Goods is concerned.
 - (c) The Company reserves the right to impose a minimum order charge of £10 on any order placed with a value of less than £500 to cover minimum administration and carriage costs to the Purchaser's premises in the United Kingdom. Special carrier services or air freight are charged in addition to the above.
 - (d) Any matter apart from the supply of goods, such as special packaging, tests of inspections, samples, carriage insurance and freight to destinations outside the United Kingdom, duties or other impositions shall be charged extra to the Purchaser, unless otherwise agreed in writing.
5. **PAYMENT**
 - (a) Unless stipulated in our acknowledgement payment is due in full without deduction or set-off no later than 30 days after the last day of the calendar month in which the company delivers the goods or not later than 30 days after the last day of the calendar month in which the Company notifies the Purchaser that the goods are ready for despatch or collection (as the case may be). If payment is not made by the due date the Company reserves the right to suspend deliveries on this or any other contract from the Purchaser. Time shall be of the essence with respect to clause 5.
 - (b) Where the Contract is or may be fulfilled in separate installments, deliveries or parts, payment for each such installment delivery or part shall be made under subclause (a) above as if the same constituted a separate contract.
 - (c) Should the Purchaser fail punctually to comply with the terms of payment, the Company shall be entitled to interest on any amount overdue at the rate of 4% per annum above the HSBC Bank PLC Base Rate then in force.
6. **RISK IN THE GOODS** The risk in the goods shall pass to the Purchaser on delivery.
7. **PROPERTY IN THE GOODS** Until payment in full has been received in cleared funds by the Company for all goods whatsoever supplied at any time by the Company to the Purchaser, property in the goods shall remain in the Company and the Purchaser shall hold the goods as our fiduciary agent and bailee.
8. **LIEN** The Company shall in respect of all unpaid debts due from the Purchaser under the same or any other contract have a general lien on all goods and property of the Purchaser, in its possession (although such Goods or some of them may have been paid for) and shall after the expiration of fourteen days written notice to the Purchaser be entitled to dispose of such Goods and property as it deems fit and apply the proceeds towards such debts, together with an unpaid seller's lien over the Goods or money representing the Goods from time to time.
9. **UNDERTAKING AND EXCLUSION OF LIABILITY**
 - (a) In the event of any defect being disclosed in any goods or part thereof supplied by the Company within 90 days from the date of delivery, the Company undertakes to consider any claim and examine the goods or parts thereof alleged to be defective and should any fault, due to defective materials supplied by the Company, be found on such examination, to supply free of charge new goods or parts in place of those acknowledged by the Company to be defective.
 - (b) The above undertaking is limited to the supply to the Purchaser free at the Purchaser's premises of the new goods or parts in exchange for any acknowledged by the Company to be defective. The decision of the Company on all claims and all questions as to defects and as to the exchange of the goods shall be final and conclusive.
 - (c) The undertaking set out in (a) above shall also apply to any replaced goods provided hereunder during the unexpired portion of the undertaking period applicable to the goods for which the replacement has been performed.
 - (d) Other than stated above, the Company undertakes no liability whatsoever in respect of goods sold by it, and shall in no circumstances be liable in respect of loss, damage or delay, injury or expense, direct or consequential suffered at any time whether before or after goods may have been repaired or replaced, and howsoever caused, even if caused by negligence or breach of duty by the Company, its servants or agents. The terms set out herein are conclusive of the relations between Company and the Purchaser and the Company shall be under no liability whatsoever by reason of any representation, statement or warranty, nor shall there be implied in any contract of sale any term, condition or warranty statutory or otherwise. Nothing in these conditions shall affect the statutory liability of the Company for death or personal injury caused by negligence.
10. **CHECKING GOODS** Unless the Purchaser gives written notice to the Company within 14 days from the date of arrival of the goods at the Purchaser's premises or the destination agreed by the parties (as the case may be) that the goods are not in conformity with the Contract, the Purchaser shall be deemed to have accepted the goods and shall be bound to make payment therefore on the due date.
11. **TOOLS** Any tools or moulds manufactured by or on behalf of the Company for the manufacture of mouldings remain the property of the Company even though the Purchaser may have been charged for part of the cost. The Company will keep such tools and moulds in repair and will not use them for work for other purchasers without the Purchasers consent. Where tools or moulds have not been used for a period of three years the Company may, after giving the Purchaser one month's notice that the Purchaser may purchase such tools and moulds, otherwise dispose of them. In the event that any tools or part of tool supplied by the Company becomes worn out and requires repair or replacement, such repair or replacement will be undertaken by the Company only upon the basis that the Purchaser contributes to the cost.
12. **DESIGN AND TECHNICAL SERVICES** Unless otherwise agreed all drawings and calculations prepared or made by the Company at the Purchaser's request must be checked by the Purchaser to ensure that they meet his requirements and the requirements of any relevant statutory or other regulations. The Company accepts no liability whatsoever in respect of such drawings and calculations. They and all industrial properties rights therein are the property of the Company and shall not be used, copied, reproduced in three dimensional form or transmitted to a third party by the Purchaser without the consent of the Company and must be returned, together with all copies and notes thereof to the Company, promptly on request.

- 13. NOTIFICATION OF DAMAGE, PARTIAL LOSS ETC.** If the goods or part thereof be damaged in transit or having been placed in transit have not been delivered to the Purchaser or as the Purchaser directed in writing:-
- (a) Damage to or partial loss from a consignment must be notified to the Company and the carrier other than upon a delivery document immediately after delivery and confirmed in writing within 3 days.
 - (b) Non-delivery of a consignment must be notified to the Company and the carrier in writing within 14 days of the date of despatch shown on the Company's Invoice/Despatch Note whichever is the earlier, otherwise we reserve the right to charge for the costs ensuring from the delayed investigation.
 - (c) Each such notice shall be given in writing to the Company and also if the Purchaser has knowledge that the goods were trusted to a carrier, to that carrier.
 - (d) The Company is not to be responsible for any damage to or loss or non-delivery of the goods if by reason of the Purchaser's failure to give notice of damage or loss or non-delivery the Company is thereby prevented from recovering compensation for such damage or loss or non-delivery from the carrier or his agent. In any event the Company shall only be liable to pay such compensation as it receives from the carrier.
- 14. INDEMNITY** The Purchaser shall indemnify the Company against all claims by any person in tort or for infringement or alleged infringement of patents, trademarks, copyright or registered designs or otherwise arising directly or indirectly in connection with goods designed or supplied by the Company in accordance with the Purchaser's requirements or specifications or with the siting or installation of such goods or in connection with a breach of these conditions by the Purchaser.
- 15. HEALTH AND SAFETY AT WORK**
- (a) The attention of the Purchaser is drawn to the provisions of section 6 of the Health and Safety at Work etc. Act 1974. The Company will make available on request information on the design, construction and installation of the Goods to ensure that as far as is reasonably practical they are safe and without risk to health when properly used. It is the responsibility of the Purchaser to take such steps as are necessary as to ensure that appropriate information relevant to the Goods is made available to any person to whom the Purchaser supplies them.
 - (b) The Purchaser shall comply with the General Product Safety Regulations 1994 insofar as they relate to the Goods.
- 16. TERMINATION** Without prejudice to its other rights, the Company may be giving written notice to the Purchaser elect to determine the contract forthwith on the happening of any of the following events:-
- (a) if the Purchaser shall repudiate or commit any serious breach of Contract.
 - (b) if the Purchaser shall commit any other breach of the Contract and shall not have remedied the same within one month of having been requested by the Company by notice in writing to do so.
 - (c) if any distress execution levied upon or against any of the chattels or property of the Purchaser is not satisfied within 21 days after the date of such levy enforcement.
 - (d) if the Purchaser is granted a moratorium passed by or enters into a composition of debts with its creditors.
 - (e) if the Purchaser shall commit any act of bankruptcy or if any petition or receiving order in bankruptcy shall be presented or made against the Purchaser.
 - (f) if an order be made or a resolution passed for the winding-up of the Purchaser, unless such resolution is made for the purpose of reconstruction or amalgamation.
 - (g) if a receiver or equivalent officer is appointed of the undertaking of any of the property and assets of the Purchaser.
- 17. DESCRIPTIVE MATTER** Unless otherwise stipulated in our acknowledgement all descriptive matter, illustrations, estimates of performance, dimensions and weights, contained in documents issued by the Company are to be regarded as being for guidance only and are not binding on the Company in any way. The Company's policy is one of continuous improvement and the right to change designs at any time without notice is reserved. Claims of compliance with British Standards, whether printed in catalogues or made on goods are to be interpreted as type test compliance required by British Standards. Where any such details are important to the Purchaser the Purchaser should request the Company to confirm them expressly before placing an order.
- 18. FORCE MAJEURE** In the event of the Company being delayed from performing the Contract by any cause beyond its reasonable control including (but without limitation) shortage of materials, or power, delays in transit, strikes, lockouts or other industrial disputes, whether at the company's premises or those of its supplier's or accidents at the Company's premises, whether or not the same was or might have been foreseen when the contract was concluded, performance by the Company shall be wholly or partly suspended during the period of such delay, provided always that if such delay shall exceed six months, either the Company or the Purchaser may give written notice terminating the Contract as to further deliveries or work.
- 19. GENERAL**
- (a) All contracts for sale and these Conditions shall in all respects be construed and operate in accordance with English Law and the parties agree to submit to the exclusive jurisdiction of the English courts.
 - (b) These conditions do not purport to confer a benefit on any party other than the Company and the Purchaser.
 - (c) Any notice required or permitted to be given by either party to the other under these conditions shall be in writing addressed to the other's principal place of business.
 - (d) No waiver by the Company of any breach of these conditions by the Purchaser shall be considered as a waiver of any subsequent breach of the same or any other provision.





Installed in more toilets than any other brand

Fluidmaster UK
Twyford Road
Rotherwas
Hereford
HR2 6JR

(01432) 357331
salesuk@fluidmaster.com

Visit www.fluidmasterUK.com
for more information

A GLOBAL FAMILY OF BRANDS 