



User Manual

4G/LTE Mobile Router

DWR-932C

Preface

D-Link reserves the right to revise this publication and to make changes in the content hereof without obligation to notify any person or organization of such revisions or changes.

Manual Revisions

Revision	Date	Description
1.0	June 09, 2021	• Initial release

Trademarks

D-Link and the D-Link logo are trademarks or registered trademarks of D-Link Corporation or its subsidiaries in the United States or other countries. All other company or product names mentioned herein are trademarks or registered trademarks of their respective companies.

Copyright © 2021 by D-Link Corporation, Inc.

All rights reserved. This publication may not be reproduced, in whole or in part, without prior expressed written permission from D-Link Corporation, Inc.

Table of Contents

Product Overview	1	Wi-Fi Status	17
Package Contents.....	1	If you selected Basic Protection:.....	18
System Requirements	2	Admin Settings	19
Introduction	3	Date & Time	19
Hardware Overview	4	Admin Settings.....	19
Overview.....	4	Apply Settings.....	21
Battery Cover Removed.....	5	Internet Settings	22
LED Indicators	6	Network Status	22
Installation	7	APN Settings.....	23
Initial Setup.....	7	APN Mode.....	24
Wireless Installation Considerations.....	8	Connection Mode Settings	25
Configuration	9	Cellular Settings	25
Initial Connection to the Router	9	SIM Card PIN Lock Settings	26
Connect via USB.....	9	My Operator (PLMN).....	27
USB Tethering Driver Installation	9	Operator Mode (PLMN)	27
Connect via Wi-Fi	10	Available Operators	28
Web-based Configuration	12	Wi-Fi Settings	29
Configuration Utility	12	Wi-Fi Status	29
Navigation.....	13	Basic Settings/Wi-Fi Security Settings.....	30
Quick Access.....	14	Wi-Fi 2.4 GHz SSID	30
Network Setup.....	15	If you selected Advanced Protection:.....	30
Setup Wizard	15	If you selected Basic Protection:.....	31
APN For LTE/3G.....	16	Advanced Settings	32
Connection Settings	16	Wi-Fi 2.4 GHz.....	32
Wi-Fi 2.4 GHz Access Name	17	Wi-Fi WPS	33
		Wi-Fi Clients	34

Settings	35	Short Messages	56
Router LAN Settings	35	USSD.....	59
LAN Setting	35	Connecting to a Wireless Network	60
DHCP Settings.....	36	Using Windows 10	60
DHCP Service.....	37	Using Windows 8	62
MAC Filter	38	Using Windows 7	64
MAC Filter Settings.....	38	Configuring Wireless Encryption	66
Firewall Settings.....	39	Using Windows Vista™	69
Firewall Settings.....	39	Configuring Wireless Encryption	70
IP Filter	41	Using Windows® XP	72
Add IP Filter.....	42	Troubleshooting	73
Port Forwarding	43	Networking Basics	75
Add Port Forwarding	44	Check your IP address.....	75
Advanced Options.....	45	Statically Assign an IP address.....	76
UPnP	45	Technical Specifications	77
Power Saving.....	46		
System	47		
System Information	47		
About DWR-932C.....	47		
Admin Settings.....	48		
Account	48		
Language.....	49		
Date & Time.....	50		
Settings Profile.....	52		
Export Profiles.....	52		
Import.....	53		
Reset and Reboot.....	54		
Firmware Upgrade.....	55		
SMS	56		

Product Overview

Package Contents



D-Link DWR-932C 4G/LTE Mobile Router



USB Cable

If any of the above items are missing or damaged, please contact your reseller.

EU Battery & WEEE Directives Disposal and Recycling

This product may contain a battery. Recycle or dispose of batteries in accordance with the battery manufacturer's instructions and local/national disposal and recycling regulations. For more information, please refer to the warranty guide.

ErP Power Usage

This device is an Energy Related Product (ErP) that automatically switches to a power-saving Network Standby mode within 1 minute of no packets being transmitted. If it is not needed during certain periods of time, it can be unplugged to save energy.

Network Standby: 3.5 watts

System Requirements

Network Requirements	<ul style="list-style-type: none">• A compatible mini-SIM/UICC card with mobile data service¹
Web-based Configuration Utility Requirements	<p>Computer with the following:</p> <ul style="list-style-type: none">• Windows®, Macintosh, or Linux-based operating system <p>Browser Requirements:</p> <ul style="list-style-type: none">• Internet Explorer 9 or higher• Firefox 12 or higher• Safari 4 or higher• Chrome 20 or higher <p>Windows® Users: Make sure you have the latest version of Java installed. Visit www.java.com to download the latest version.</p>

¹ Subject to services and service terms available from your carrier.

Introduction

The D-Link DWR-932C 4G/LTE Mobile Router lets you share a fast mobile Internet connection with multiple PCs and mobile devices letting you and your friends enjoy the advantages of a wireless network anywhere, anytime. It offers 4G LTE and 3G HSPA+ compatibility for fast downlink and uplink data rates, so you get fast upload and download speeds in areas without wired Internet.

High-Speed Mobile Internet with LTE Connectivity

The DWR-932C 4G/LTE Mobile Router gives you high-speed Internet wherever you are and lets you share it on the go. Using LTE technology, you can achieve download speeds of up to 150 Mbps and upload speeds of up to 50 Mbps¹. The built-in LTE antenna provides a reliable connection to your mobile service provider, and a separate internal Wi-Fi antenna gives extended coverage to the computers and mobile devices connected to the DWR-932C.

Mobile Internet for All of Your Devices

With the DWR-932C, you can get online with your notebook, smartphone, tablet, or any other wireless device using a single mobile connection. The DWR-932C provides high-speed Wireless N coverage, giving high-speed wireless access to everybody – whether you are with colleagues on a business trip, or travelling with friends and family.

Built-in Software for Instant Access Anywhere

The DWR-932C is truly plug-and-play, with drivers already on the router, so you can connect without needing to install anything. Open a browser, connect to the router, and you can set up your network right from the web interface. Once the device is set up, you can simply power it on to start up your portable mobile network without any configuration, meaning that you can share your mobile Internet connection without even needing a computer.

Designed for True Portability

The DWR-932C 4G/LTE Mobile Router is small and slim enough to carry around in your purse, bag, or pocket. The built-in 2000 mAh rechargeable Li-Ion battery can provide hours of mobile usage, so you can work online longer.

¹ All references to speed are for comparison purposes only. Actual speeds will vary depending on a range of factors including mobile network coverage, signal strength, network activity, and environmental conditions.

Hardware Overview

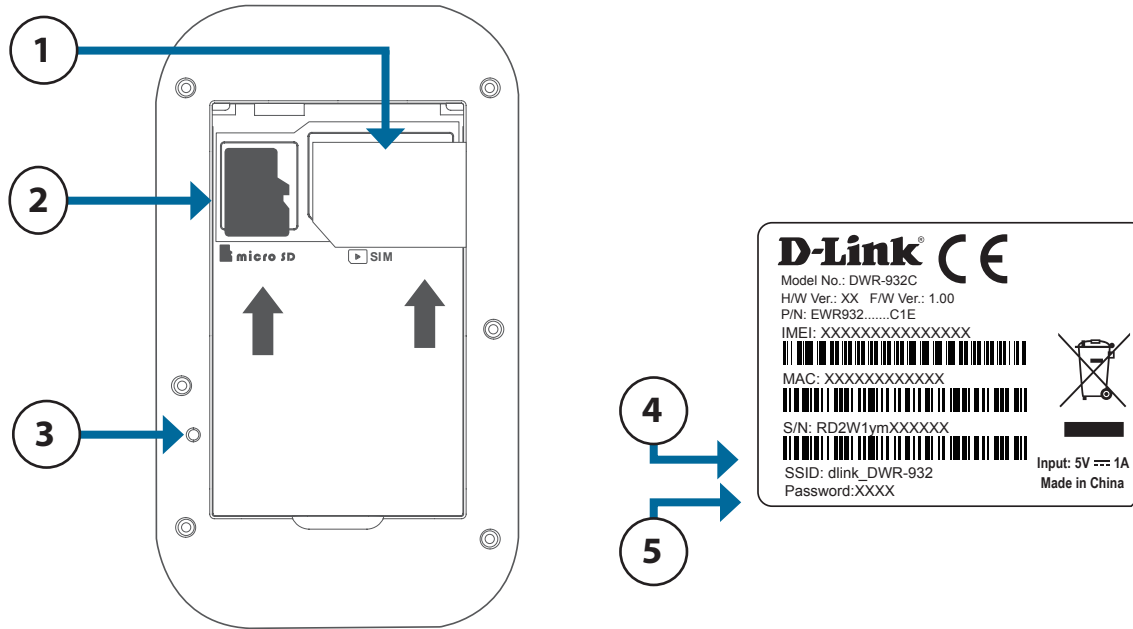
Overview



1	WPS Button	Press this button to add new wireless devices quickly and easily using Wi-Fi Protected Setup (WPS).
2	Power Button	Press and hold this button for 3 seconds to power on/off the device.
3	LED Indicators	Status display. Please refer to LED Indicators on page 6.
4	Micro USB Connector	Use the included cable to connect to a powered USB port kto charge the device, or connect to a computer to access the configuration utility.

Hardware Overview

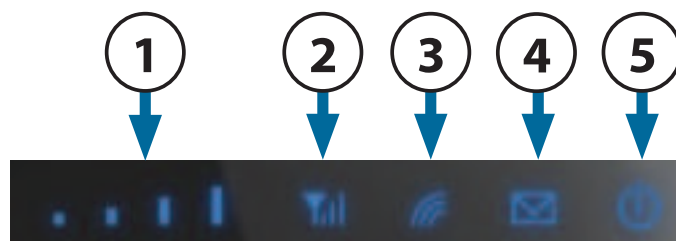
Battery Cover Removed



1	SIM Card Slot	Insert a SIM card to access the Internet and your SIM card contacts list.
2	microSD Card Slot	Insert a microSD card for additional data storage.
3	Reset Button	Using a paper clip, press and hold this button for 5 seconds to reboot the unit. Note: Ensure that the battery is inserted and the unit is powered on when pressing the reset button.
4	Wi-Fi Network (SSID)	The network name (SSID) of the DWR-932C will be displayed here.
5	Network (SSID) Password	The network (SSID) security key of the DWR-932C will be displayed here.

Hardware Overview

LED Indicators



Number	Name	Explanation	
1	Signal Strength	Indicates signal strength. More bars indicates a stronger signal. No bars indicates no signal.	
2	Mobile Signal Type	Solid Blue	Internet connection over LTE.
		Blinking Blue	Registered on an LTE network but not yet connected.
		Solid Green	Internet connection over 3G.
		Blinking Green	Registered on a 3G network but not yet connected.
		Solid Purple	Internet connection over 2G.
		Flashing Purple	Registered on a 2G network but not yet connected.
3	SMS Inbox	Blinking Blue	New SMS message.
4	Wi-Fi Indicator	Solid Blue	Wi-Fi Active.
		Blinking Blue	Active Link.
		Fast Blinking Blue	WPS pairing in progress.
5	Power Indicator	Green	Power-on in progress.
		Blue	Fully charged or normal operation with battery about 60%.
		Blinking Amber	Charging.
		Solid Amber	Battery between 60% and 15%.
		Blinking Red	Battery less than 15%.

Installation

This section will guide you through the installation process.

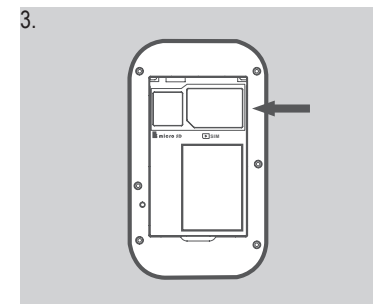
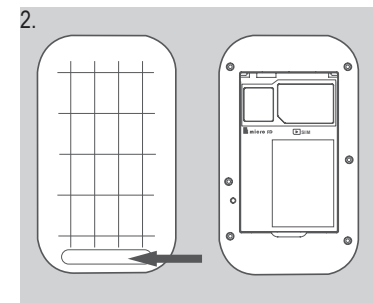
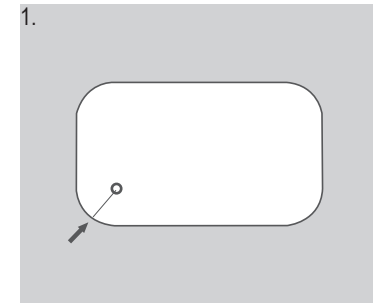
Initial Setup

1. Remove the battery cover on the back of the device by gently prying it up from the case using the corner notch, then remove the battery.
2. Note the SSID (network name) and password on the label on the battery cover. If you want to connect to the DWR-932C wirelessly, you will need to enter this SSID and password.
3. Slide the SIM card frame to the right and lift up. Insert the SIM/UICC card into the SIM/UICC card slot as shown, ensuring the gold contacts are facing down. Replace the frame and slide it left to lock it in position.

Note: *If you wish to use the onboard storage functionality, you may install a microSD at this time.*

4. Reinsert the battery and replace the battery cover.
5. Connect the Micro USB end of the USB cable to the Micro USB port on the bottom of the DWR-932C and plug the other end into the USB port of the power adapter (not included) or PC to charge the battery.
6. Press and hold the power button for three seconds to turn on the device. Once the power LED changes from green to solid blue or amber, you may proceed with configuration.

Note: *Always unplug and turn off the router before installing or removing the SIM card. Never insert or remove the SIM card while the router is in use.*



Wireless Installation Considerations

The DWR-932C can be accessed using a wireless connection from anywhere within the operating range of its wireless network. Keep in mind that the quantity, thickness, and location of walls, ceilings, or other objects that the wireless signals must pass through may adversely affect wireless signals. Ranges vary depending on the types of materials and background RF (Radio Frequency) noise in your home or office. The key to maximizing the wireless range is to follow these basic guidelines:

1. Minimize the number of walls and ceilings between the router and other network devices. Each wall or ceiling can reduce your adapter's range from 1 to 30 meters (3 to 90 feet).
2. Be aware of the direct line between network devices. A wall that is 0.5 meters (1.5 feet thick) appears to be almost 1 meter (3 feet) thick at a 45-degree angle. At a 2-degree angle it appears over 14 meters (42 feet) thick. Position devices so that the signal will travel straight through a wall or ceiling (instead of at an angle) for better reception.
3. Try to position access points, wireless routers, and computers so that the signal passes through open doorways. Materials such as glass, metal, brick, insulation, concrete, and water can affect wireless performance. Large objects such as fish tanks, mirrors, file cabinets, metal doors, and aluminum studs may also have a negative effect on range.
4. If you are using a 2.4 GHz cordless phone, make sure that the 2.4 GHz phone base is as far away from your wireless device as possible. The base transmits a signal even when the phone is not in use. In some cases, cordless phones, X-10 wireless devices, and electronic equipment such as ceiling fans, fluorescent lights, and home security systems may dramatically degrade wireless connectivity.

Configuration

This section will show you how to configure your new D-Link mobile router using the configuration utility that can be accessed via your web-browser.

Initial Connection to the Router

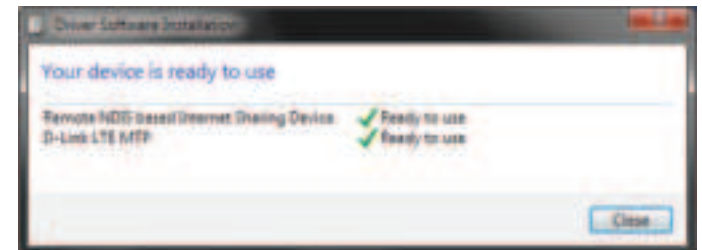
By default, the DWR-932C comes configured to work with most 4G SIM cards. Simply connect to it via Wi-Fi or use the included USB to access the SIM's Internet connection. If you wish to configure the router, you will need to establish a direct connection with the router in order to access the web-based configuration utility. For information please refer to **Connect via Wi-Fi on page 10**. Once you have configured your router, you will be able to connect using the Wi-Fi settings that you specified in the configuration process. Please ensure that the router is powered on and has sufficient battery power before commencing the setup process.

Connect via USB

To connect to the router via USB, plug the provided Micro USB cable into the Micro USB port on the side of the router, and plug the other end into an available USB port on your computer.

USB Tethering Driver Installation

When you plug the DWR-932C into your computer, any necessary drivers will immediately install. Your version of Windows may prompt you to confirm the driver installation.



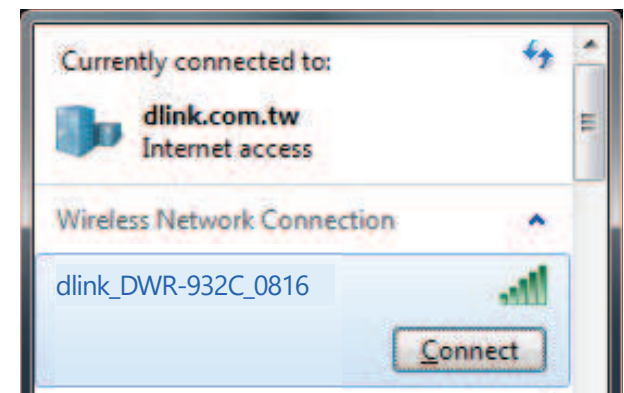
Connect via Wi-Fi

Note: The following example uses Windows 7's built-in wireless connection utility. If you are using a different operating system, or a third party connection utility, the process may be different. Please refer to the documentation that came with your operating system or wireless client for further information on how to connect to a wireless network.

To connect to the router using Wi-Fi, open your operating system's wireless networking utility and scan for available networks to connect to. By default, the network name (SSID) of the DWR-932C will be in the format **dlink_DWR-932C_XXXX**, where "XXXX" represents the last four characters of the DWR-932C's MAC address. The default SSID and password can also be found on the product label attached to the battery cover. For more information on where to find this label refer to **Hardware Overview** on page 4.

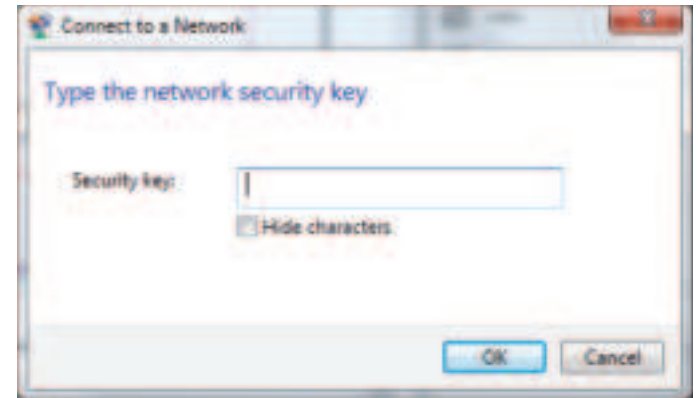


Once you have located your DWR-932C's wireless network, select it and click **Connect**.



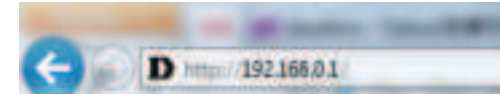
You will then be prompted to enter the network security key for your router. Enter the security key in the box provided and click **OK**. Your wireless connection utility will confirm that the connection is successful, and you can move to the next step to continue to the configuration process.

You can also set up a connection using the Windows built-in WPS feature. Please see **Connecting to a Wireless Network** on page 60.



Web-based Configuration

To access the configuration utility, open a web browser (such as Internet Explorer) and enter the IP address of the router, which is **192.168.0.1** by default in the address bar.



Configuration Utility

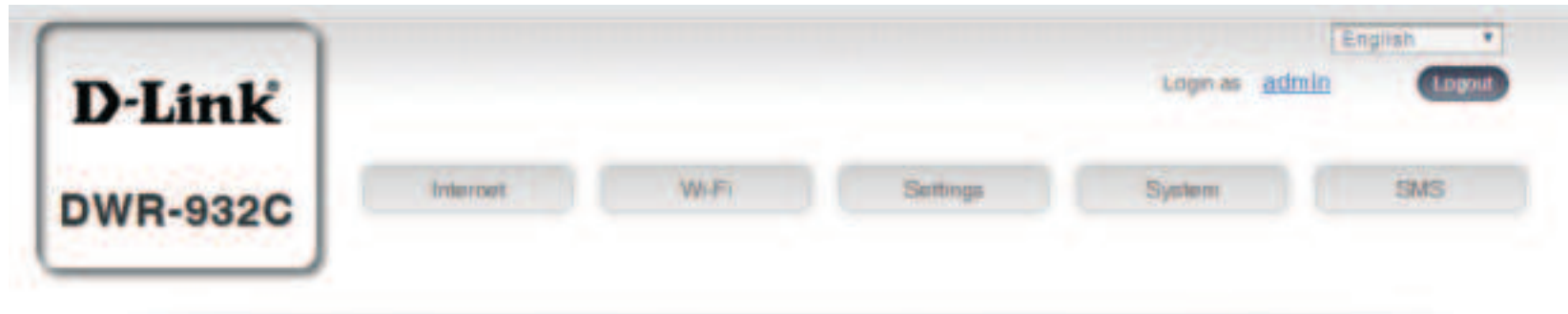
Once you have reached the configuration utility through your web browser, you will need to log in. Enter **admin** as the username, and then enter the password. By default, the password should be left blank.

Click **Sign in** to continue.



Navigation

On the home page of the interface, you will find a menu bar at the top of the page which includes tabs for easy navigation.



- Internet** The **Internet** tab allows you to configure your Internet settings, including details about your mobile operator.
- Wi-Fi** The **Wi-Fi** tab allows you to configure your Wi-Fi network, as well as add new devices using WPS.
- Settings** The **Settings** tab allows you to configure firewall and security settings.
- System** The **System** tab allows you to view system information, change your login information, and upgrade the firmware.
- SMS** From the **SMS** tab, you can sent and receive SMS text messages, as well as USSD (Unstructured Supplementary Service Data) codes, sometimes called “Quick Codes” or “Feature Codes.”

Quick Access

A quick access page will be displayed on the initial home page for the DWR-932C. The headings below link through to windows where you can alter settings in more detail.

Internet This area displays your Internet provider, the type of Internet service you are using, signal strength, and your current data usage.

Connection Mode This area displays the length of connection time and allows you to change between **Always Connect** and **Manual Connect**.

Wi-Fi The Wi-Fi section displays the number of devices currently connected to the router via Wi-Fi.

Short Messaging This area displays the number of SMS messages in your inbox and your draft messages.

Power Saving This area displays whether power saving features have been enabled, such as suspend mode.



Network Setup Setup Wizard

The **Wizard** page will guide you through the steps required to configure the basic settings of your router, such as the IP address, network name (SSID), and password. Click on the **Setup Wizard** button to begin the quick setup wizard.



Connection Settings

In this section you can configure your connection settings. Depending on your mobile operator, you may have to input additional settings before use. If so, please contact your service provider for this information.

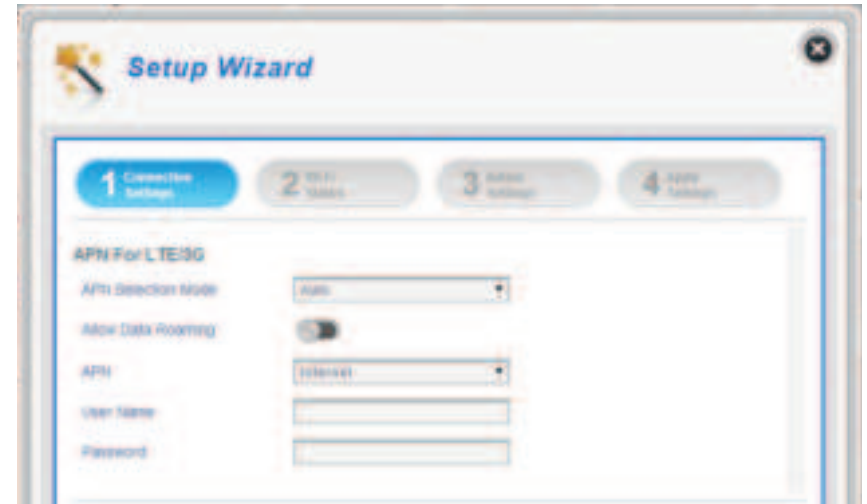
APN For LTE/3G

APN Selection Mode Choose to either automatically or manually select an APN (Access Point Name).

Allow Data Roaming Select this if you want to allow data roaming.

APN Enter your service provider's APN.

User Name and Password (optional) Enter the username and password provided by your service provider.



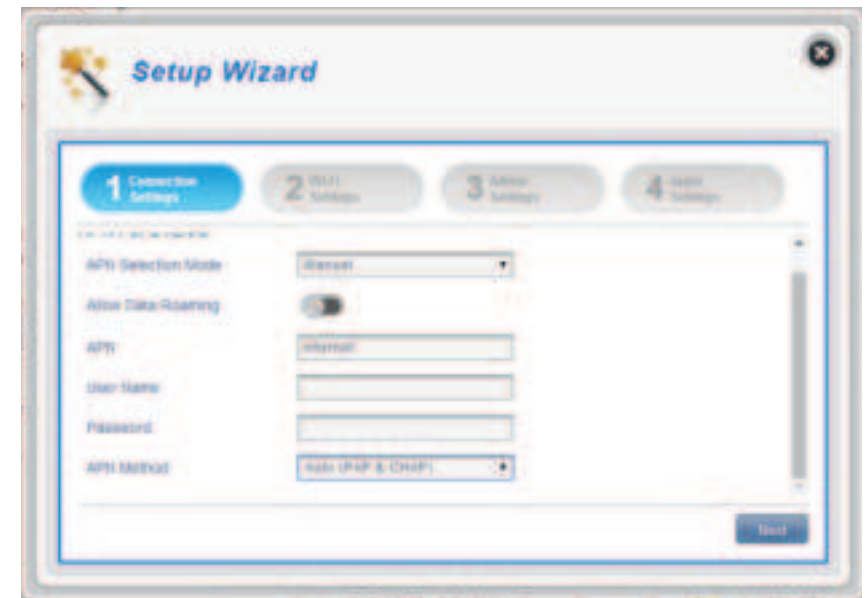
If you choose to manually select an APN.

Auto (PAP & CHAP) Detect the correct combination of authentication. Select this if your service provider uses this protocol.

PAP Password Authentication Protocol. Select this if your service provider uses this protocol.

CHAP Challenge Handshake Authentication Protocol. Select this if your service provider uses this protocol.

Click **Next** to move to the next section.



Wi-Fi Status

In this section you have the option of changing your Wi-Fi access name and password as well as security features, which help protect your network from unwanted intruders.

Wi-Fi 2.4 GHz Access Name

Access Name Wi-Fi 2.4 GHz The name of your wireless access point.

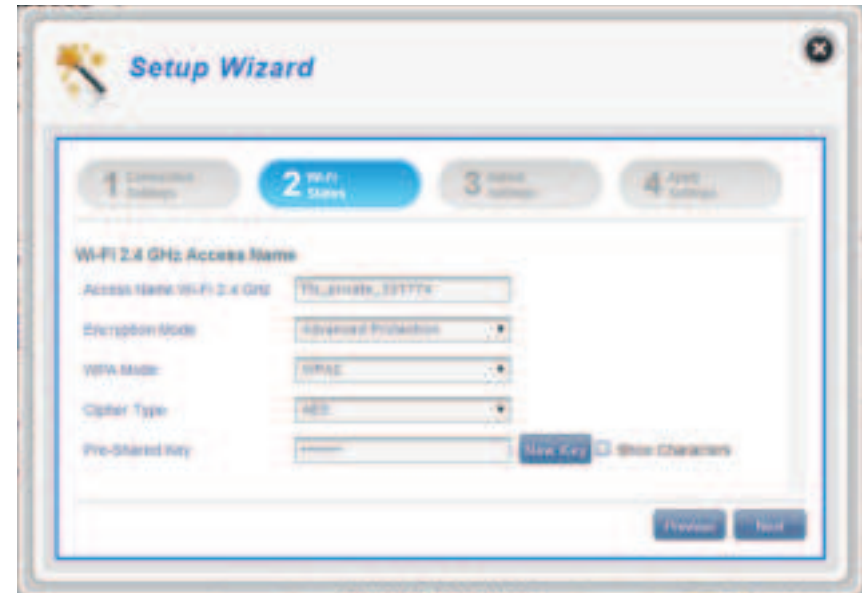
Encryption Mode By default encryption mode is set to **Advanced Protection**. You may change this to **Basic Protection** or **No Protection** but it is not recommended.

WPA Mode **Auto (WPA or WPA2)** - The router will automatically determine the version of WPA to be used based on the client that is connecting to it.
WPA2 - Clients will only be able to associate with the router using the WPA2 standard. Clients which do not support WPA2 will not be able to associate with the router.

Cipher Mode **AES** - A newer cipher used by the WPA2 standard. Use of this cipher type is required in order to achieve best speeds and maximum security.

AES/TKIP - TKIP is an encryption method commonly used by older devices. Select this option for greater compatibility with old and new devices.

Pre-Shared Key The pre-shared key is the password which clients will require in order to connect to your network. Enter a password of between 8 and 63 characters in length.



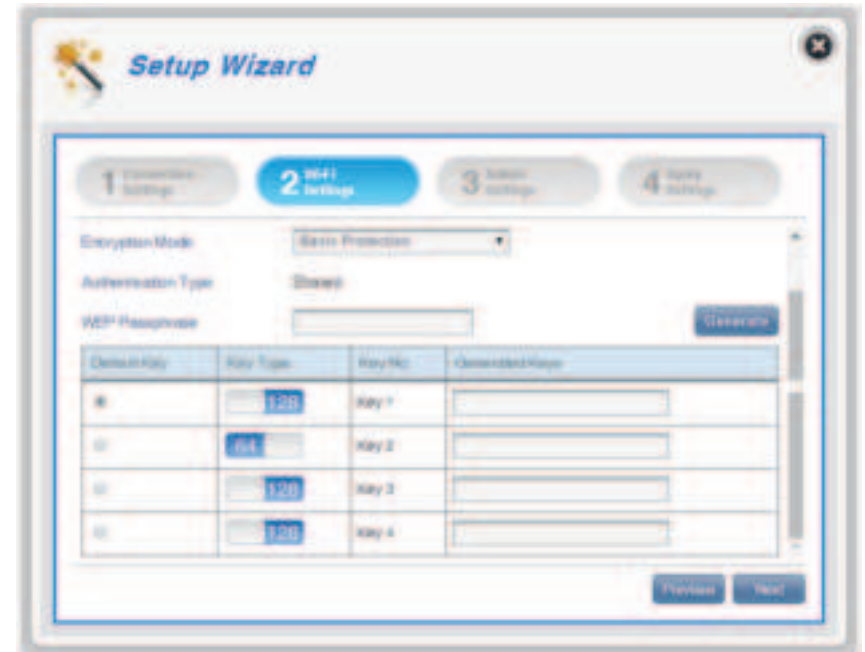
If you selected Basic Protection:

Authentication Type: **Shared** - The encryption key is used for authentication as well as to encrypt data packets.

WEP Passphrase: Enter your passphrase to be used when connecting to the router. Once you have entered a passphrase, click **Generate** to create keys automatically, or enter them manually below.

Key 1-4: You can predetermine up to 4 WEP keys. Select the WEP key you wish to use by clicking on the radial buttons next to the keys. Select whether you wish to use **64 bit** or **128 bit** characters in your key using the slider menu. Enter the desired key in the field provided.

Click **Next** to move to the next section.



Admin Settings

In this section, you can adjust your admin username and password for logging in via your web browser, as well as the time and date.

Admin Settings

Username Enter your desired username here.

Password Enter your desired password here.

Confirm Password: Re-enter your password to confirm.

Language Select your desired interface language here.

Date & Time

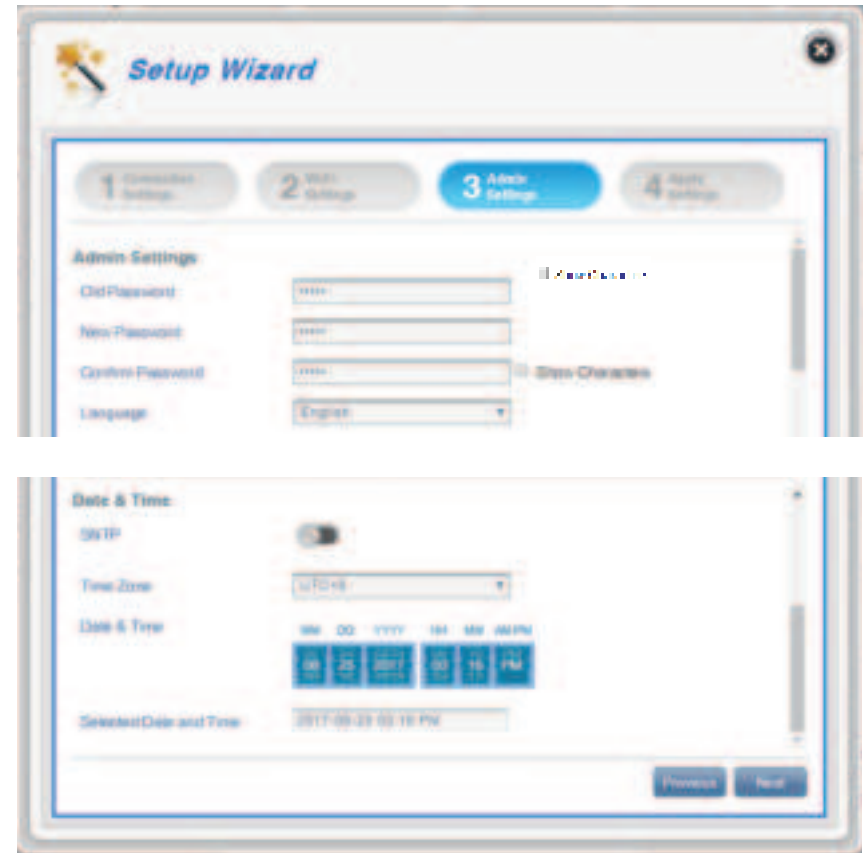
SNTP Toggle the switch to **Enable** or **Disable** to automatically synchronize the time with a Simple Network Time Protocol (SNTP) server.

If SNTP is Disabled:

Time Zone Select your current time zone relative to UTC (Coordinated Universal Time).

Date & Time Adjust the dials on the screen with your mouse cursor or pointer to set the time and date.

Selected Date and Time Displays your new, dial-adjusted time.



If SNTP is Enabled:

Primary, Secondary, and Tertiary SNTP Server Enter an SNTP server address which will be used to synchronize the router's system time and date.

Time Zone Select your current time zone relative to UTC (Coordinated Universal Time).

Synchronization Cycle You can specify in hours how frequently the DWR-932C will synchronize with the SNTP server.

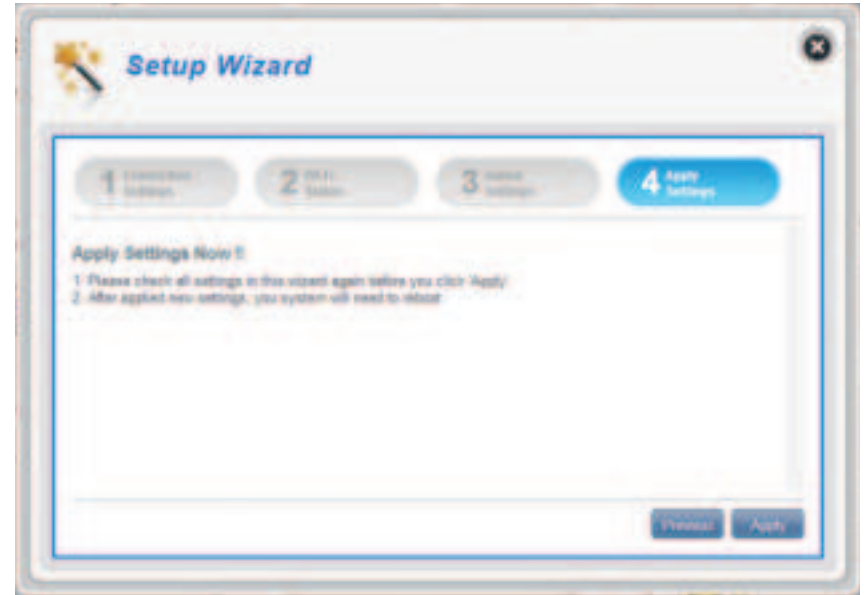
Click **Next** to move to the next section.



Apply Settings

Check all settings in the wizard and click **Apply**. After applying your settings, your router will need to reboot.

Click **Apply** to save changes.



Internet Settings

Network Status

In this section you can check your current network status as well as your network provider and data usage.

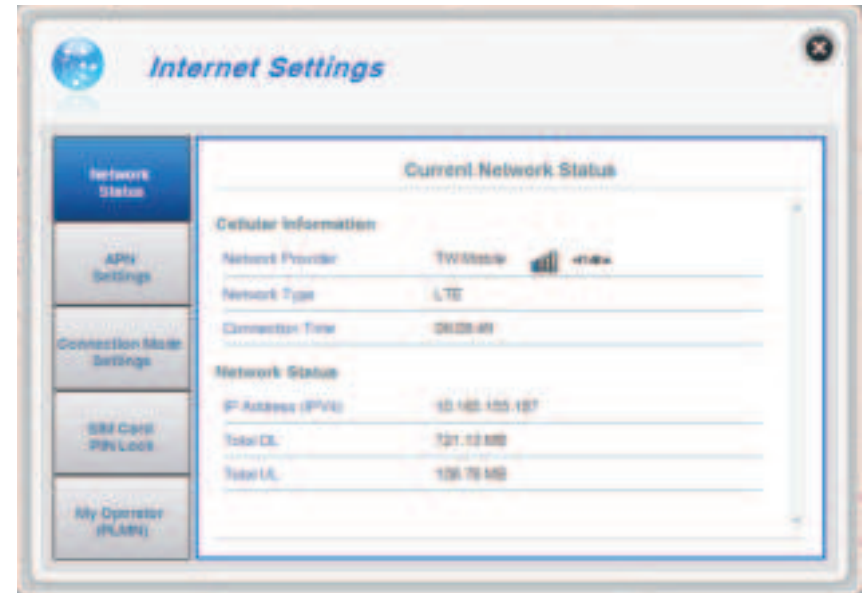
Cellular Information

- Network Provider** Displays your current network provider and signal strength.
- Network Type** Displays the type of network you are connected to, such as 2G, 3G or LTE.
- Connection Time** The length of time you have been connected to the network.

Network Status

- IP Address (IPV4)** Displays your current IP address.
- Total DL** Displays the total amount of downloaded data.
- Total UL** Displays the total amount of uploaded data.

Note: These counters may be reset when the battery or SIM card is removed.



APN Settings

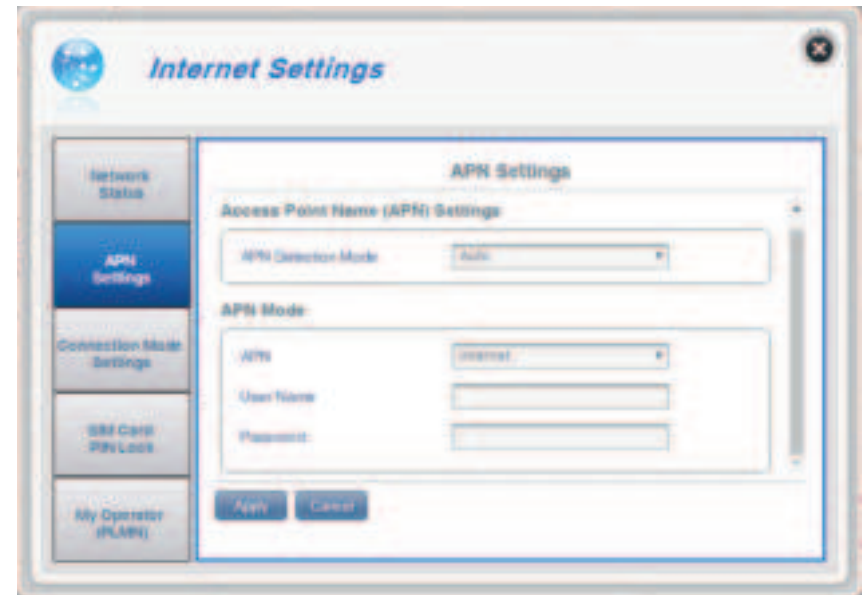
In this section you can configure your Access Point Name (APN) settings. Depending on your mobile service provider, you may have to input optional settings before use. If so, you may need to contact your service provider regarding these details.

Access Point Name (APN) Settings

APN Selection Mode **Auto** - Select this option if you want the DWR-932C to automatically connect to a mobile network after it has been powered on, or has been disconnected from its current mobile network.

Manual - Enter the Access Point Name (APN) for the connection. If you do not know this information, please contact your service provider.

Click **Apply** to save changes.



If you choose to manually select your APN:

APN Mode

APN If you are already connected to a mobile network, your ISP will provide the necessary APN which you can select from the drop down list. If no options are available, use the manual configuration on the previous page.

User Name Enter the username to be used for this connection.

Password Enter the password to be used for this connection.

APN Method Choose the authentication method that your ISP uses to connect to its mobile network. If you do not know this information, please contact your service provider. For more information refer to **Connection Settings** on page 16.

Click **Apply** to save changes.



Connection Mode Settings

This section allows you to choose your desired cellular network, allow data roaming and control your connection mode.

Cellular Settings

Preferred Cellular **Auto** - Automatically connects to a mobile network.

2G mode - Only connects to a 2G mobile network.

3G mode - Only connects to a 3G mobile network.

LTE mode - Only connects to a LTE mobile network.

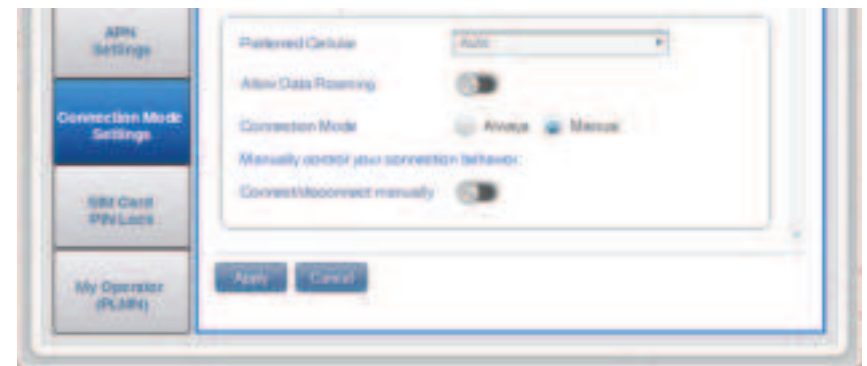
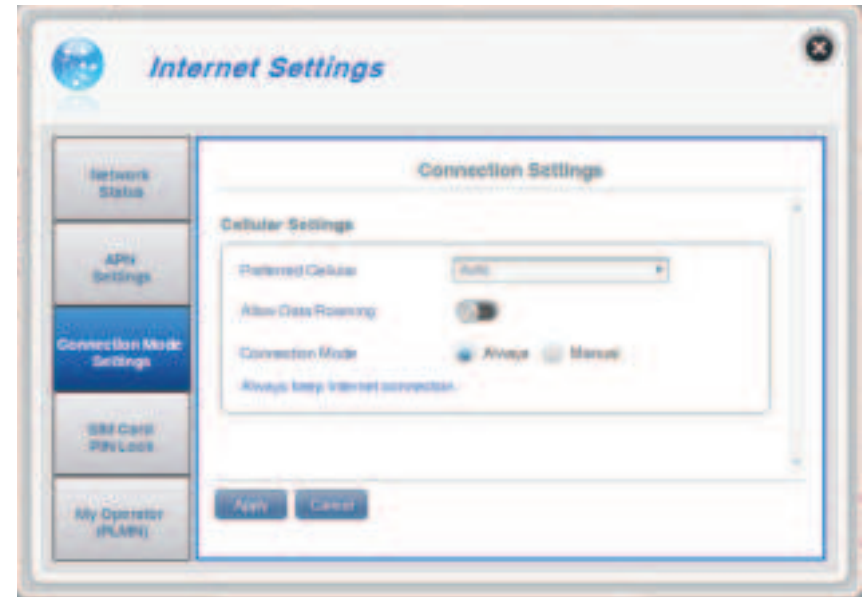
Allow Data Roaming Enabling this if you want to allow data roaming. Data roaming lets you use an Internet connection internationally or outside of you Internet provider's coverage. Enabling this feature may lead to very high data charges. Check with your provider for details.

Connection Mode Choose between **Always** or **Manual** for connecting to the Internet.

If you selected Manual Connection Mode:

Connect/disconnect manually Toggle the switch to enable/disable your Internet connection.

Click **Apply** to save changes.



SIM Card PIN Lock Settings

This section allows you to lock the SIM card currently inserted into the DWR-932C.

SIM

No. of Retry The number of retries left to access your SIM.

Note: *If you exceed the number of retries, your SIM card will be locked and can only be unlocked by your operator.*

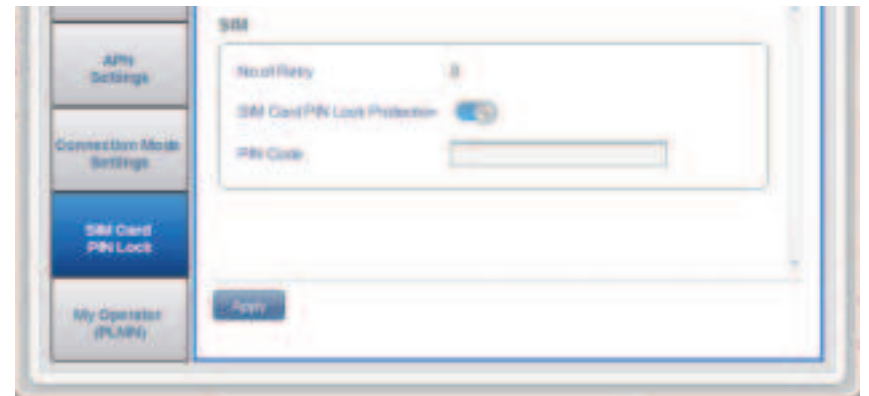
SIM Card PIN Lock Protection Move the toggle to enable **SIM card PIN Lock Protection**. In order to use this function you need to know the PIN of the SIM/UICC card.



If you enabled SIM Card PIN Lock Protection:

PIN Code Enter your SIM's pin code here.

Click **Apply** to save changes.



My Operator (PLMN)

This page allows you to view available Public Land Mobile Networks (PLMN). This page can also be used to select a preferred network when you are roaming outside of your home network.

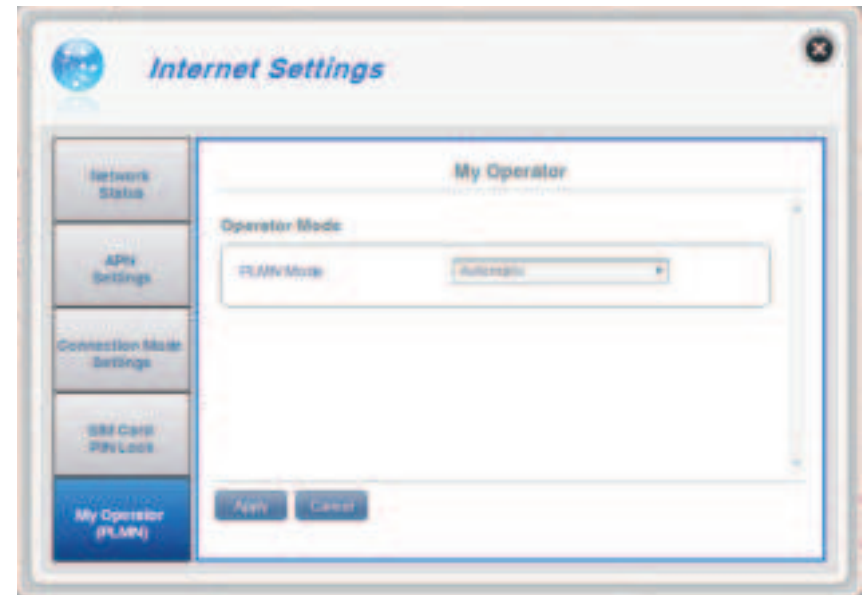
Operator Mode (PLMN)

PLMN Mode Displays the current mode the DWR-932C is operating in.

Select **Automatic** to allow the DWR-932C to automatically connect to the first available network when roaming.

Select **Manual** to choose your preferred roaming network from the list below.

Click **Apply** to save changes.



If you selected Manual Mode:

Click on your preferred network to select it, or type in the **Search** box to find your desired network.

Note: You will need to manually disconnect from the current mobile data service before selecting a network using PLMN.

Available Operators

ID ID number assigned to each available PLMN.

Use it Check the box to select your desired network.

Status The network's current status.

Operator Name The name of the cellular network.

Access Technology The cellular network's access technology.

Click **Apply** to save changes.



Wi-Fi Settings

Wi-Fi Status

This page displays your current Wi-Fi status and Wi-Fi settings.

General Information

Wi-Fi WPS Displays whether Wi-Fi Protected Setup (WPS) is enabled and the configuration method used.

Wi-Fi 2.4 GHz Displays whether Wi-Fi is enabled.

Current Wi-Fi Clients Displays the number of clients connected to your Wi-Fi network.

Wi-Fi Status

SSID Name Displays the name of your Wi-Fi network.

Encryption Displays your current Wi-Fi security encryption mode.

DHCP Displays whether DHCP server is enabled.

IP Address Your router's IP address.

Subnet Your router's subnet mask.

MAC Address Your router's MAC address.



Basic Settings/Wi-Fi Security Settings

In this page you can view your Wi-Fi security settings, here you can alter things like your SSID name, SSID visibility and access Wi-Fi security features.

Wi-Fi 2.4 GHz SSID

SSID For Wi-Fi 2.4 GHz Displays the name of your Wi-Fi network. Click in the box to edit.

SSID Visibility Click the toggle to change your SSID visibility to clients.

Max Client Number The maximum number of clients allowed on your network.

Protection By default **Advanced Protection** is selected. You may also select **Basic Protection** or **No Protection**.

If you selected Advanced Protection:

WPA Mode Auto (WPA or WPA2) - The router will automatically determine the version of WPA to be used based on the client that is connecting to it.

WPA2 - Clients will only be able to associate with the router using the WPA2 standard. Clients which do not support WPA2 will not be able to associate with the router.



Cipher Type **AES** - A newer cipher used by the WPA2 standard.

Note: Use of this cipher type is required in order to achieve 802.11n speeds.

AES/TKIP - TKIP is an encryption method commonly used by older devices. Select this option for greater compatibility with old and new devices.

Pre-Shared Key

The pre-shared key is the password which clients require in order to connect to your network. Enter a password of between 8 and 63 characters in length.

Click **Apply** to save changes.

If you selected Basic Protection:

Authentication Type: **Shared** - The encryption key used authenticate wireless client and encrypt data.

WEP Passphrase: Enter your passphrase to be used when connecting to the router. Once you have entered a passphrase, click **Generate** to create keys automatically, or enter them manually below.

Key 1-4: You can predetermine up to 4 WEP keys. Select the WEP key you wish to use by clicking on the radial buttons next to the keys. Select whether you wish to use **64 bit** or **128 bit** characters in your key using the slider menu. Enter the desired key in the field provided.

Click **Apply** to save the current settings.

The screenshot shows the 'Wi-Fi Security Settings' interface. At the top, 'Authentication Type' is set to 'Shared'. Below it, the 'WEP Passphrase' field contains 'hello' and a 'Generate' button is visible. A table lists four WEP keys, each with a 'Default Key' radio button, a 'Key Type' slider (set to 128 bit for Key 1, 64 bit for Key 2, and 128 bit for Keys 3 and 4), a 'Key No' label, and a 'Generated Keys' text field.

Default Key	Key Type	Key No	Generated Keys
<input checked="" type="radio"/>	128	Key 1	5d41402abc
<input type="radio"/>	64	Key 2	57d801cd28
<input type="radio"/>	128	Key 3	3c0ccb0413814102348dd95
<input type="radio"/>	128	Key 4	70cbe01b044eebf0814b05b91

At the bottom of the form are 'Apply' and 'Cancel' buttons.

Advanced Settings

Wi-Fi 2.4 GHz

Wi-Fi 2.4 GHz Toggle the switch to enable/disable Wi-Fi functionality on your router.

802.11 Mode The type of Wi-Fi connection currently being accepted by the router. Select **802.11 N Only for best performance** or **802.11 B/G/N Mixed** for broadest compatibility. **B/G/N Mixed** is the default setting.

Channel Width The current channel width being used by your router. A wider 40 Mhz channel may increase performance but could cause interference with other Wi-Fi devices. This router will automatically reduce to 20 Mhz if interference is detected. Choose **HT20** if you have devices that do not support 40 Mhz channels.

Wi-Fi Channel Choose the clearest channel to help optimize the performance and coverage of your wireless network. By default the channel is set to **Auto Channel**. This can be changed to fit the channel setting for an existing wireless network or to customize your wireless network. Note that not all channels are available in all regions. If you cannot see your SSID from your device, try manually setting a low-numbered channel.

Click **Apply** to save changes.



Wi-Fi WPS

PBC Push Button Configuration (PBC) enables you to easily connect your devices to the DWR-932C by pushing a PBC button on both devices. Press your device's PBC button and then click **Start Via PBC**, to begin the WPS process.

Use PIN Mode Move the toggle to enable PIN protection for use with the WPS feature.

Note: *WPS PIN Mode is disabled by default. This mode is less secure and is not recommended. It is retained in this product for compatibility purposes only.*

PIN The PIN is a unique number that can be used to configure your router. Click **Generate New** to generate a new random PIN, or select **Use Default** to restore the factory PIN. Note that if the WPS PIN feature is enabled, using a new PIN is strongly recommended.

Click **Apply** to save changes.



Wi-Fi Clients

This page shows your current client list and allows you to filter clients by host name, IP address and MAC address. This filtering option enables you to allow or deny access to specific wireless clients.

Wi-Fi 2.4 GHz Clients List

Host Name A unique name for each wireless client that is connected to your router.

IP Address The IP address of the wireless client that is connected to your router.

MAC Address The hardware address of the client's wireless adapter.

Access Toggle this switch to allow or deny access to specific clients.

Note: If you deny access to a Wi-Fi client, you will see their MAC address in the **MAC Filter on page 38**. If required, you can re-allow access to the client there.

Click **Apply** to save changes.



Settings

Router LAN Settings

This section provides configuration options for local area network (LAN) settings.

LAN Setting

LAN Setting Displays your current LAN status.

To DHCP Service Setting

The DWR-932C has a built-in DHCP server which can assign IP addresses to connected clients. This section shows your current settings and allows you to configure the IP address for the DWR-932C, as well as configure its DHCP settings.

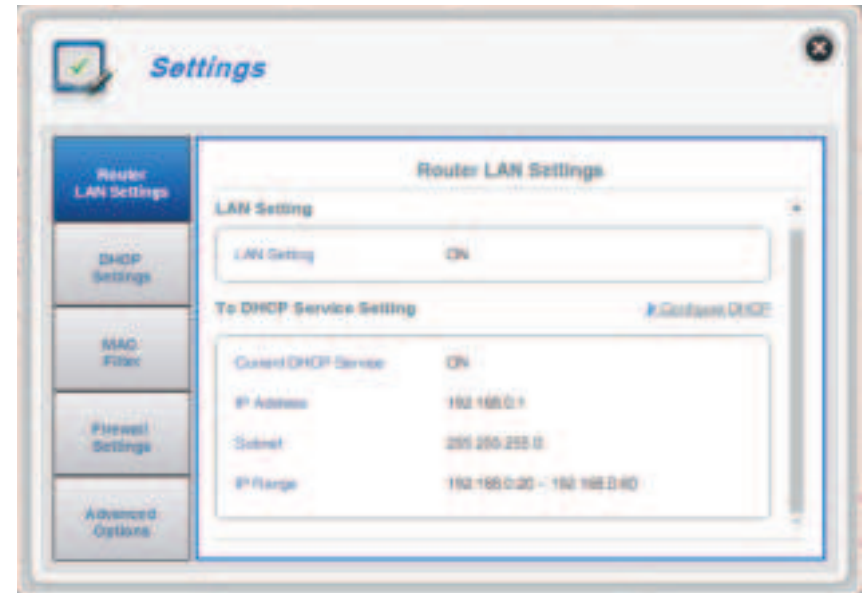
Configure DHCP This button takes you through to DHCP settings where you can configure your IP address and IP range.

Current DHCP Service Shows if the DHCP server is **ON** or **OFF**.

IP Address The router's current IP address.

Subnet The subnet number that your router is using.

IP Range The range of IP Addresses that the DHCP server will give out.



DHCP Settings

Here you can disable or enable your router's DHCP Service, configure the IP address for the DWR-932C, and set the range of IP addresses assigned by the DHCP server.

DHCP Service

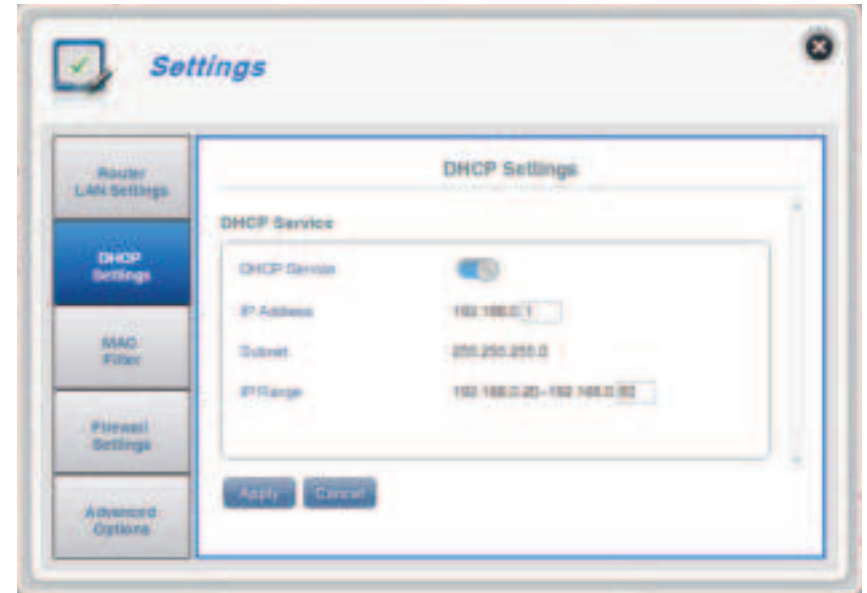
DHCP Service Enable or disable the DHCP Service.

IP Address Click on the last digit to alter your router's current IP address.

Subnet The subnet mask that your router is using.

IP Range Click on the last digits to alter the range of IP addresses assigned by the DHCP server.

Click **Apply** to save changes.



If you selected **Configure DHCP**:

DHCP Service

Here you can configure the IP address for the DWR-932C, as well as the range of IP addresses that the DHCP will give out.

DHCP Service Enable/disable the DHCP server.

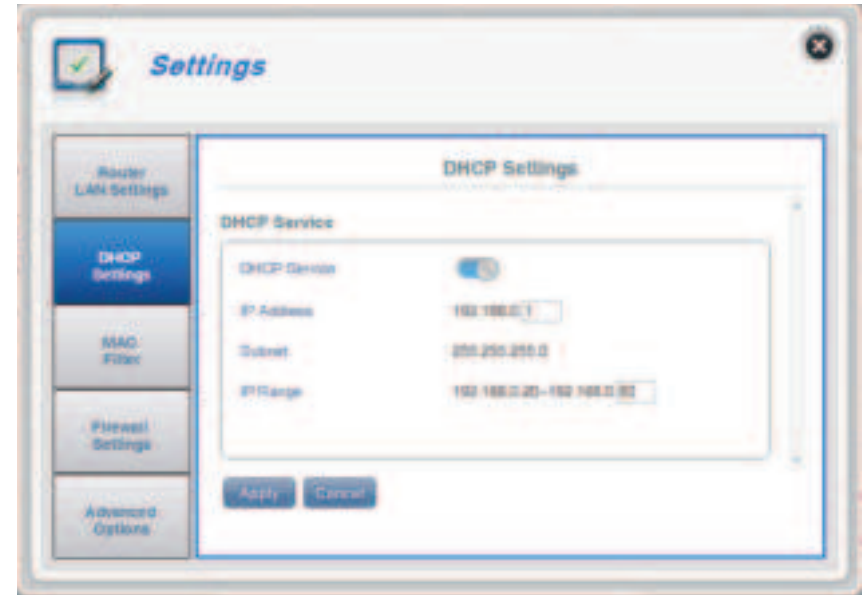
Note: *Disabling this server may make the web interface inaccessible until the router is reset.*

IP Address Click on the last digit to alter your router's IP address.

Subnet The subnet that your router is currently using.

IP Range Click on the last two digits to alter the range of numbers that the DHCP server will give out.

Click **Apply** to save changes.



MAC Filter

This page allows you to set MAC filters (Media Access Control) which allow or deny LAN (Local Area Network) computers from accessing the network. A MAC address is a unique ID assigned by the manufacturer for devices that connect to a network. You can either manually add a MAC address or select the MAC address from the list of clients that are currently connected to the router.

MAC Filter Settings

MAC Filter Toggle this switch to enable/disable the MAC filter.

MAC Filter For Black List Here is a list of clients' MAC addresses that have been denied access to your network.

ID ID number given to client blacklisted clients by your router.

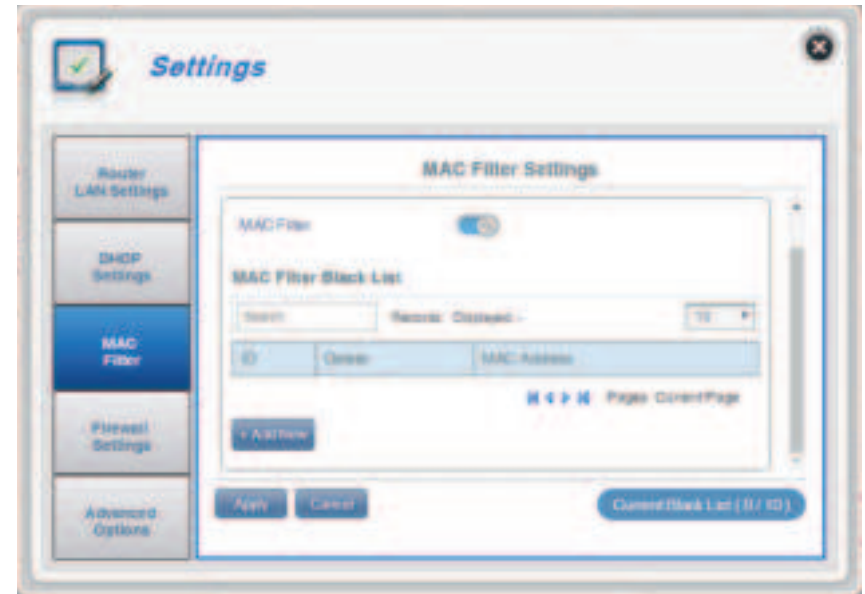
Delete Check this box to delete clients from the black list.

MAC Address Specify the MAC address of the computer to be filtered.

Add New Select the **Add New** button and manually enter the MAC address of the client that you wish to deny access to your network.

Note: You can view the current list of clients connected to your network and their MAC addresses in **Wi-Fi Clients** on page 34.

Click **Apply** to save changes.



Firewall Settings

A firewall helps protect your network from external cyber attack and intrusions. This page allows you to alter your router's firewall settings.

Firewall Settings

Firewall Enable Clicking this toggle activates the IP Filter. For more information see **IP Filter** on page 41.

DMZ Settings Toggling the DMZ (Demilitarized Zone) will expose a chosen computer to the outside world by completely disabling all firewalls and routing all inbound traffic to the target IP.

Note: *This feature is only recommended for advanced users. Enabling this option will potentially expose your computer to attacks over the Internet.*

PPTP Pass Through Allows clients to connect to their corporate network or VPN using the PPTP protocol.

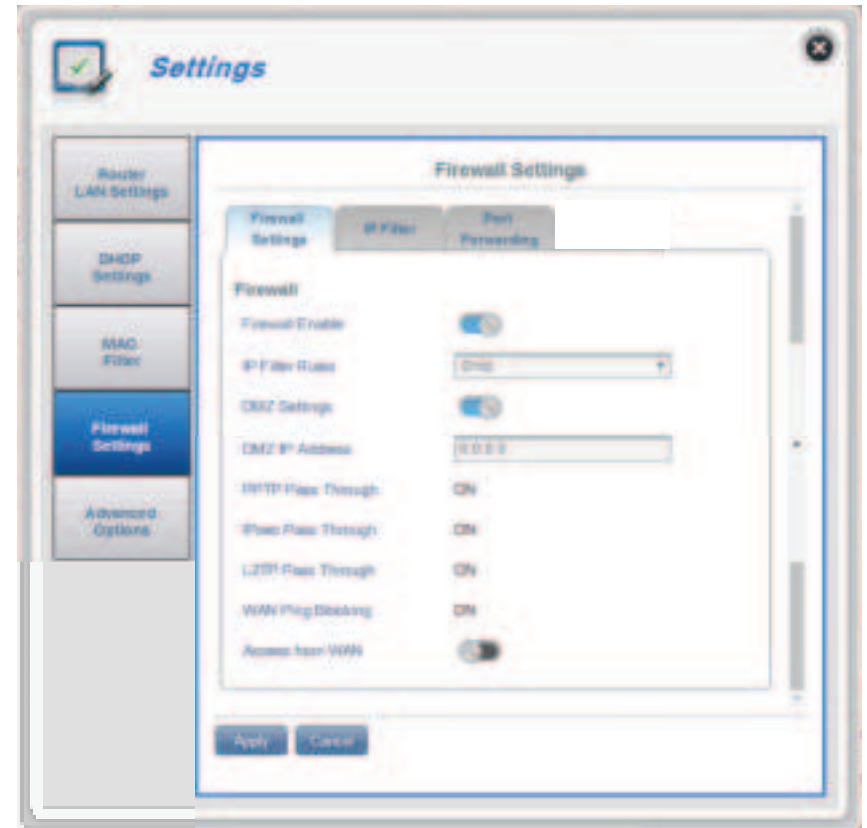
IPsec Pass Through Allows clients to connect to their corporate network or VPN using the IPsec protocol.

L2TP Pass Through Allows clients to connect to their corporate network or VPN using the L2TP protocol.

WAN Ping Blocking When enabled the DWR-932C will not respond to pings from WAN.

Access from WAN Clicking this toggle allows access from WAN. This setting may open your router to external security threats and is not recommended for most users.

Click **Apply** to save changes.



If you selected Firewall Enable:

IP Filter Rules Choose **Drop** to block all IP addresses defined in the **IP Filter** section or **Allow** to only allow those addresses access to your network.



If you selected DMZ Settings:

DMZ IP Address Enter the IP address of the DMZ.



If you selected Access from WAN:

Access from WAN Allows the configuration interface to be access over WAN. This setting is not recommended.

Click **Apply** to save changes.



IP Filter

The DWR-932C can filter certain IP addresses and ports. IP filtering allows you to direct specific traffic to a specified local client based on source IP address or protocol. The DWR-932C supports a maximum of 50 filters.

Click **Add New** to add a new filtering rule.

ID ID number given to new IP filters.

Delete Click here to select the filters you wish to delete.

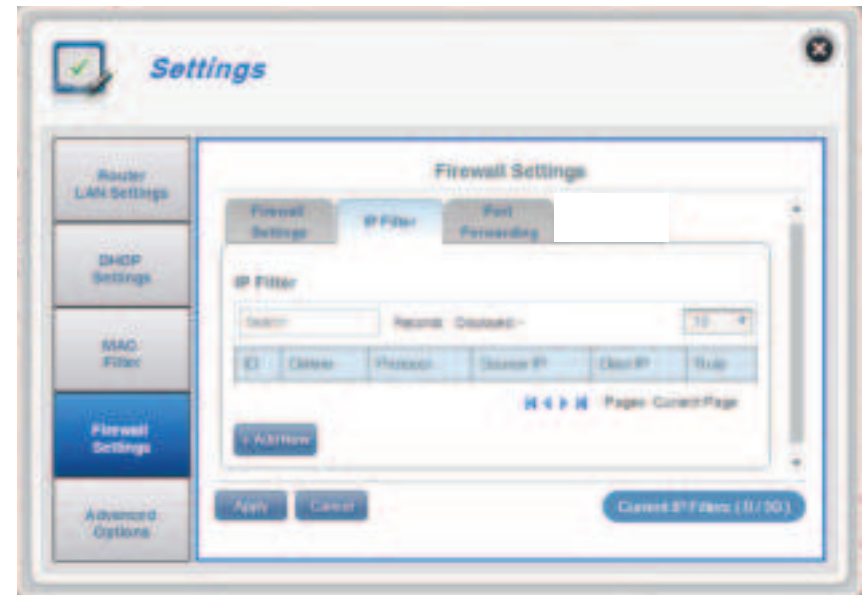
Protocol The protocol for the IP filter rule.

Source IP The source IP address to be filtered.

Dest IP The destination IP address to be filtered.

Click **Add New** to add a new rule

Click **Apply** to save changes.



If you selected Add New IP Filter:

Add IP Filter

Protocol Select the protocol for ports that you want to allow or deny access to. Choose between **TCP, UDP** or **ICMP** or all of the above.

Source IP Enter the source IP address that you wish to filter.

Subnet Enter the subnet mask of the source IP address you wish to filter.

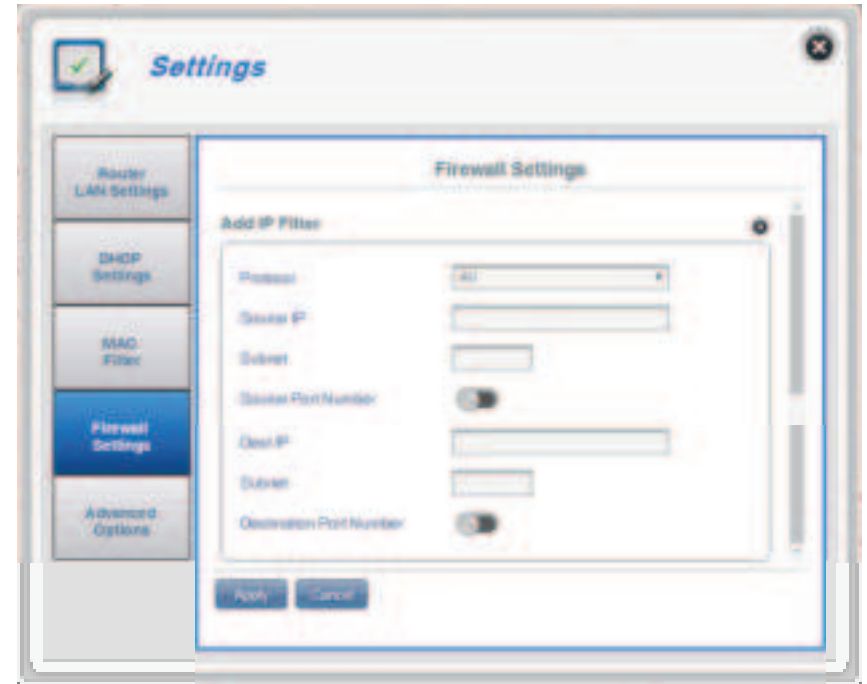
Source Port Number Enable this feature if you wish enter a single port or a range of ports to be filtered based on origin. Disabling this feature will cause all incoming connection fitting other criteria to be filtered.

Source Port Range Enter an incoming port range to which your filter will apply.

Dest IP Type in the destination IP address. Leave this blank to apply your filter to incoming connections to any destination IP

Destination Port Number Click the toggle if you wish enter a single port or a range of ports to be filtered. Separate port numbers with a comma.

Destination Port Range Enter a destination port range to which your filter will apply.



Port Forwarding

This page will allow you to open a single port or a range of ports to specific IP addresses. The DWR-932C supports a maximum of 50 filters.

ID ID number given to the new rule.

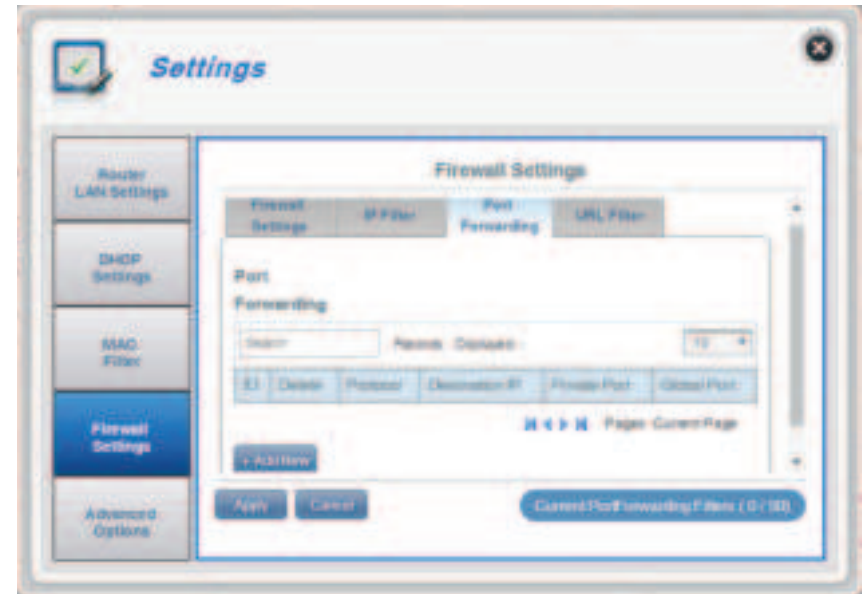
Delete Click here to select the rules you wish to delete.

Protocol The selected protocol for the IP filter rule.

Destination IP The IP address that will be port forwarded to.

Port The port number that incoming traffic will be forwarded from.

Click **Add New** to add a new port.



If you selected Add Port Forwarding

Add Port Forwarding

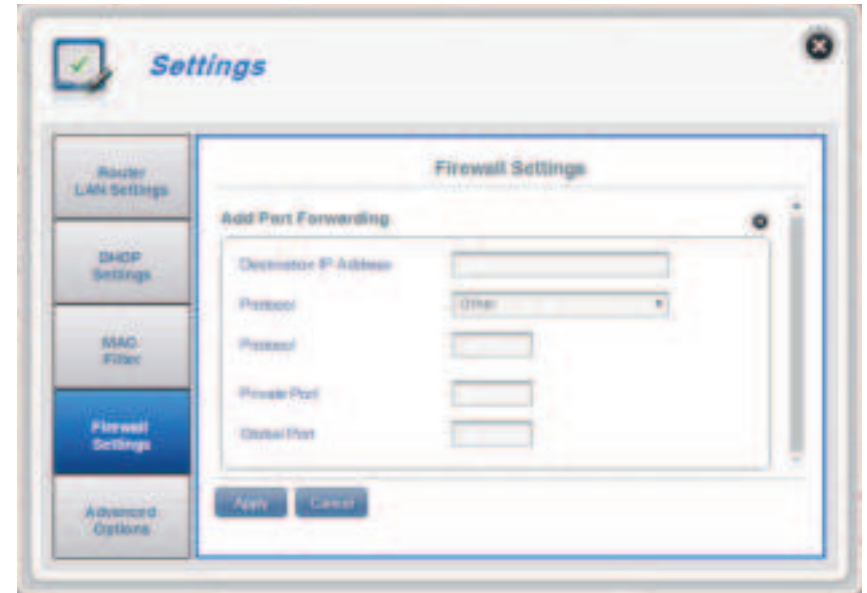
Destination IP Address The IP address you want to allow port forwarding on.

Protocol Select the protocol for ports that you want to allow or deny access to. Choose between **TCP, UDP** or **Other**. If you select **Other** you will be asked to specify the protocol in addition to the ports.

Private Port Select the port number or numbers for your service on your local network. Enter a single port or a range. If entering multiple ports, separate port numbers with a comma.

Global Port Destination Port Range Select the port number or numbers for your service to be exposed to the Internet. Enter a single port or a range. If entering multiple ports, separate port numbers with a comma.

Click **Apply** to save your changes.



Advanced Options

On this page you can enable and disable the Universal Plug and Play (UPnP) feature. UPnP devices can easily view and interact with other compatible networking equipment, software and peripherals.

UPnP

UPnP Click the toggle to use the Universal Plug and Play (UPnP) feature.

Note: *UPnP is intended for advanced users only. Enabling this feature may expose your network and devices to attacks over the Internet. It is disabled by default for your protection.*

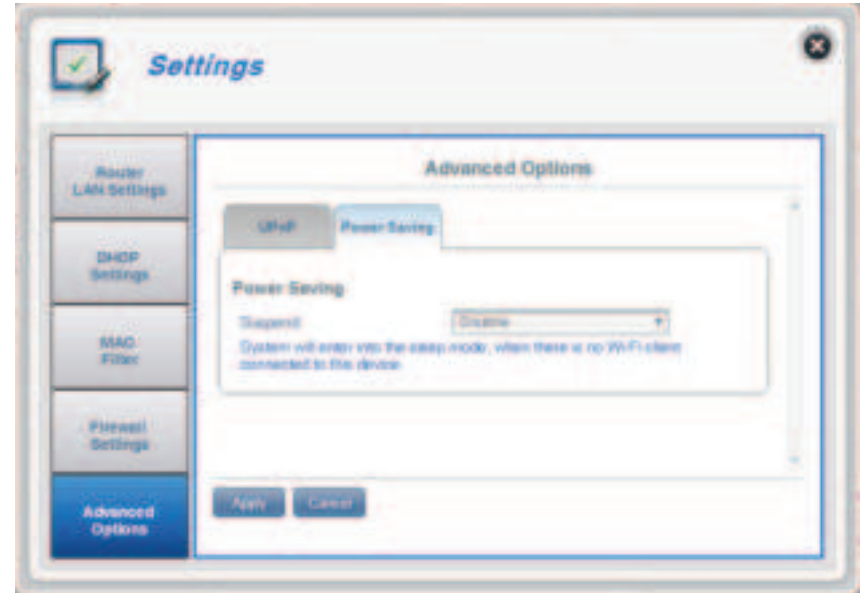


Power Saving

On this page you can configure power saving settings, to help extend the battery life of your DWR-932C when you don't have easy access to a charger.

Suspend Allows you to set the length of time after which the DWR-932C will go to sleep when no Wi-Fi clients are connected.

Click **Apply** to save your changes.



System System Information

About DWR-932C

FW Version The current firmware version of the DWR-932C.

Hardware Version The current hardware version of the DWR-932C.

IMEI International Mobile Equipment Identity is a unique number assigned to every mobile device.

SIM IMSI The SIM/USIM card has a unique number called an International Mobile Subscriber Identity (IMSI). This is used to identify and authenticate users on cellular devices.

Model Name The model name of your D-Link router.

Battery Capacity Your router's battery capacity expressed as a percent.

System Uptime The length of time since last restart.



Note: The FW version number and Modem Version number displayed on the image above may differ from the model you have purchased due to firmware updates or regional variation.

Admin Settings

Account

This tab allows you to customize your own username and password as well as adjust the UI's automatic logout timer.

Username Adjust your login username here.

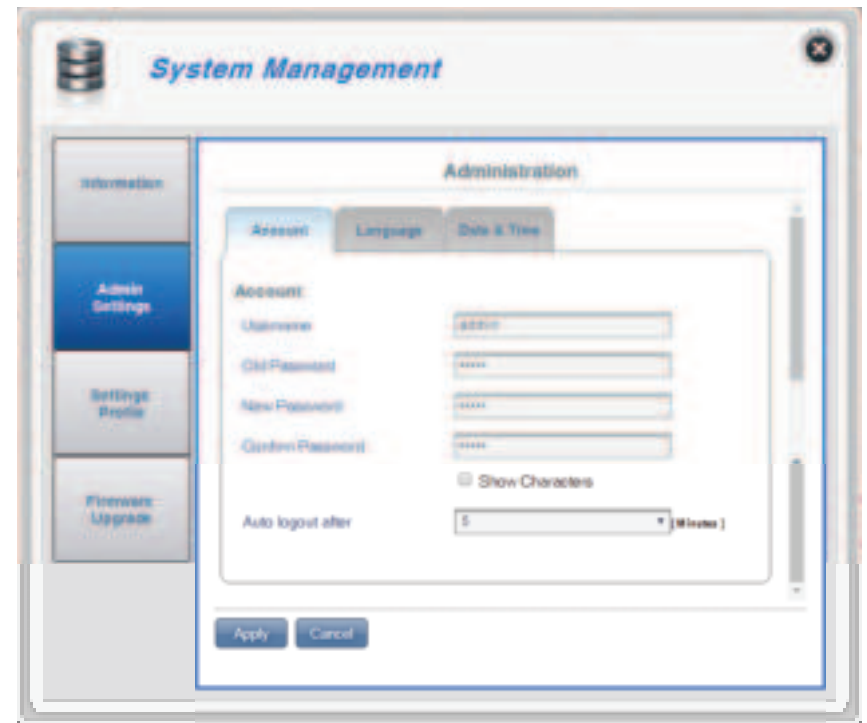
Old Password Enter your old password here.

New Password Enter a new password here.

Confirm Password Confirm the new password here.

Auto logout after Click on the drop-down arrow to select the length of time before being automatically logged out of the interface.

Click **Apply** to save your changes.

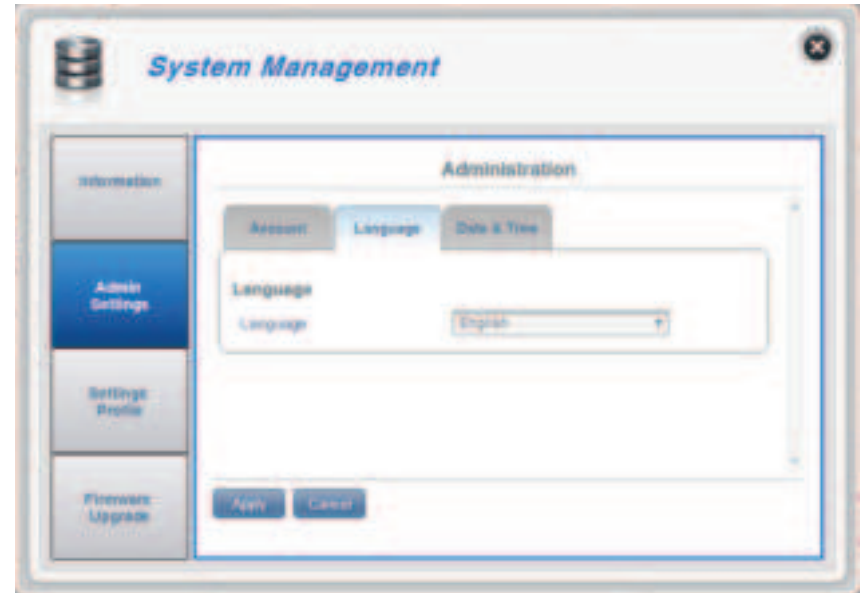


Language

This tab allows you to change the default language of the router's web interface.

Language Select your desired language here.

Click **Apply** to save your changes.



Date & Time

In this section, you can adjust the date, time, and network time synchronization settings of your router.

SNTP Click the toggle to **Enable** or **Disable** automatic time synchronization with a Simple Network Time Protocol (SNTP) server.

Primary, Secondary and Tertiary SNTP Server Enter an SNTP server address which will be used to synchronize the router's time and date.

Time Zone Select your current Coordinated Universal Time zone (UTC).

Synchronization Cycle You can specify in hours how frequently the DWR-932C will update the time from an SNTP server.

Daylight Saving Select to **Enable** if your region uses Daylight Saving Time. If you have selected **Enable**, enter the details of your region's Daylight Saving scheme below.

Click **Apply** to save your changes.

The screenshot shows the 'System Management' web interface. The 'Administration' section is active, and the 'Date & Time' sub-tab is selected. The configuration page includes the following elements:

- SNTP**: A toggle switch that is currently turned on (blue).
- Primary SNTP Server**: A text input field containing '1.192.168.100:3702'.
- Secondary SNTP Server**: A text input field containing '2.192.168.100:3702'.
- Tertiary SNTP Server**: A text input field containing '3.192.168.100:3702'.
- Time Zone**: A dropdown menu set to 'UTC+8'.
- Synchronization Cycle**: A numeric input field set to '1' with a '(Hours)' label.
- Selected Date and Time**: A text field showing '2017-07-14 11:55 AM'.
- Daylight Saving**: A toggle switch that is currently turned off (grey).
- Start Date**: A section with dropdowns for 'First' (set to 'Sunday'), 'of' (set to 'April'), and 'at' (set to '12').
- End Date**: A section with dropdowns for 'Last' (set to 'Sunday'), 'of' (set to 'October'), and 'at' (set to '1').
- Buttons**: 'Apply' and 'Cancel' buttons at the bottom of the form.

If you disabled automatic synchronization with an SNTP server.

Time Zone Select your current Coordinated Universal Time zone (UTC).

Date & Time Adjust the dials with your mouse to set the date and time.

Selected Date and Time Displays your new adjusted time.

Click **Apply** to save your changes.



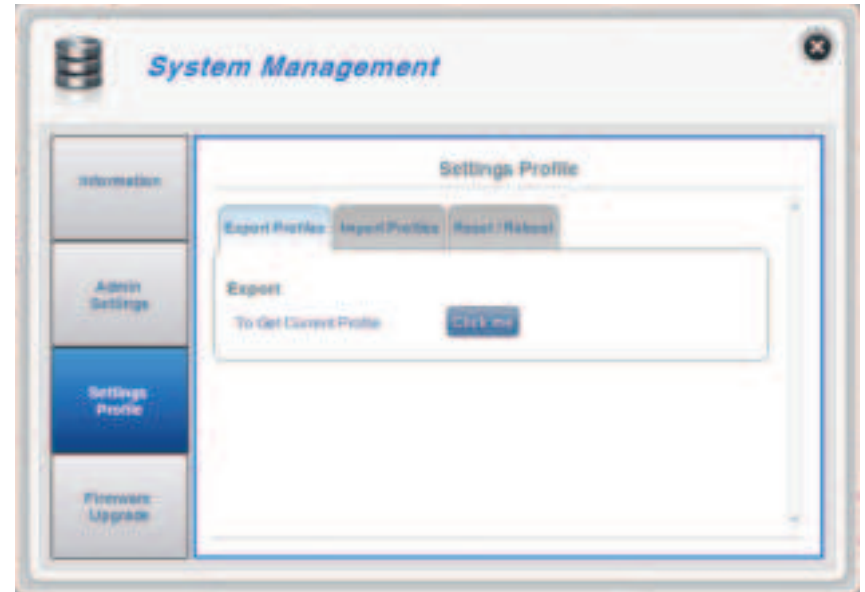
Settings Profile

Export Profiles

In the **Export Profiles** tab you can export your current configuration to a computer.

Export

To Get Current Profile Click the **Click Me** button to download the current settings of your DWR-932C.

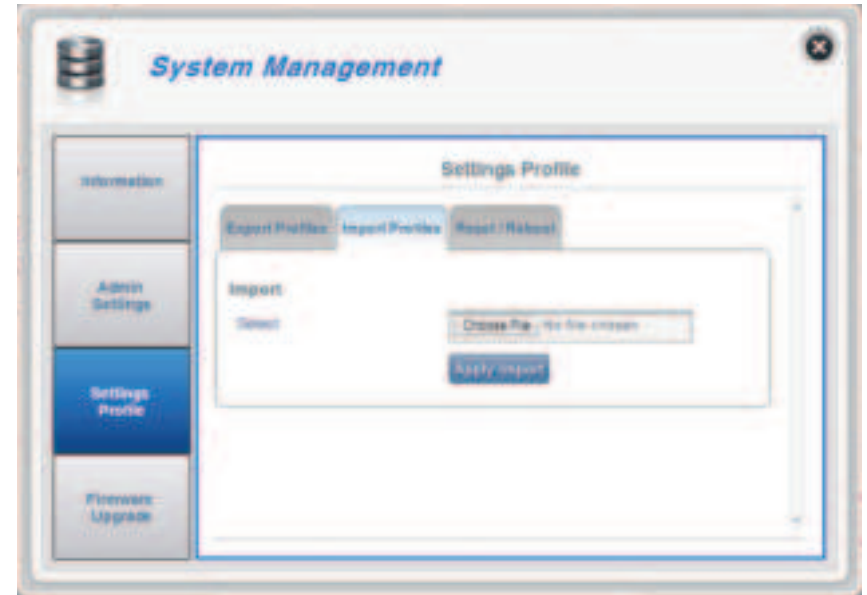


In the **Import Profiles** tab, you can import previously saved settings for the router.

Import

Select Browse your computer for previously exported settings.

Click **Apply Import** to proceed.



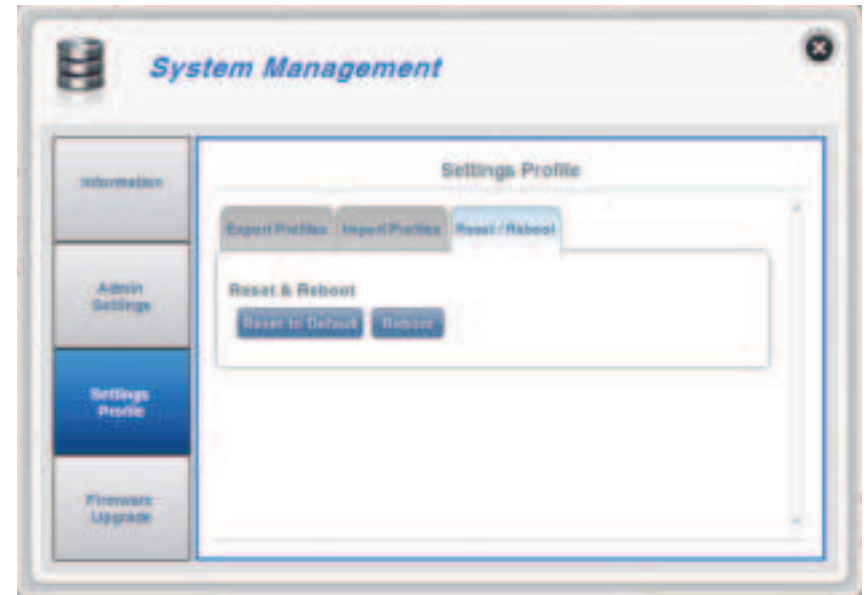
Reset and Reboot

In the **Reset and Reboot** tab you can reboot your router or reset it to factory default settings. You can also manually reset your router by removing the battery cover and using an implement such as a straightened paperclip to press and hold the reset button on the router for 5 seconds.

Reset and Reboot

Reset to Default Select the **Reset to Default** button to reset the DWR-932C to factory default settings.

Reboot Select the **Reboot** button to reboot the DWR-932C.



Firmware Upgrade

This page allows you to manually upgrade your router's firmware.

Upgrade My router

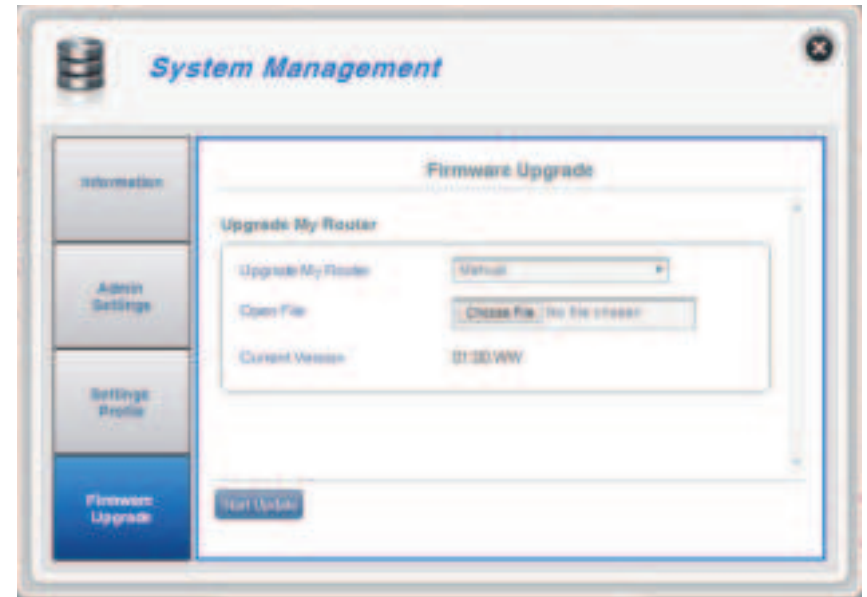
Upgrade My Router Select **Manual** to manually upgrade your router's firmware. To upgrade automatically, select **Remote Server** from the drop down menu and then click **Check Remote Server** and follow the on-screen instructions.

Open File If you have selected a manual upgrade, select the appropriate file for the upgrade.

Current Version The current version of your firmware.

Note: *The FW version number displayed on the image to the right may differ from your router due to firmware updates or regional variation.*

Click the **Start Update** button.



SMS

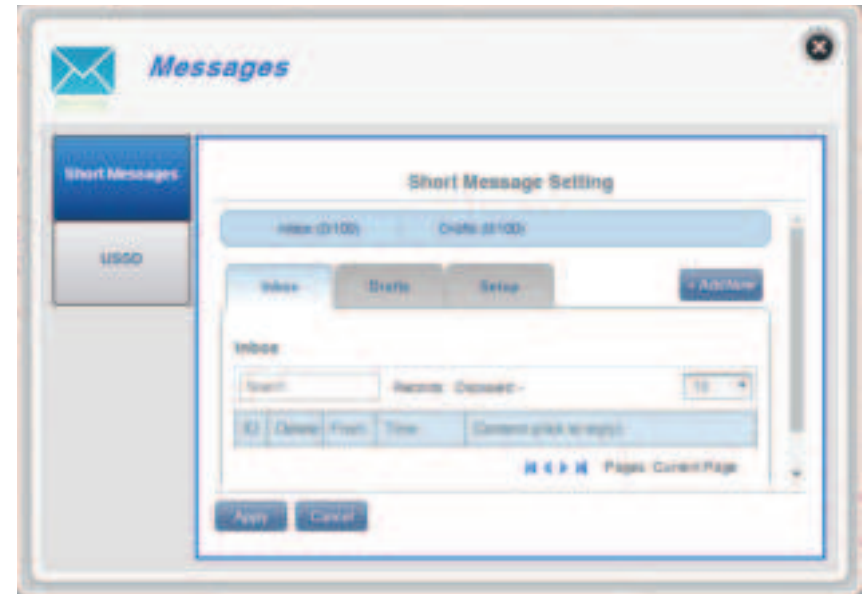
Short Messages

On the Short Messages Settings page you can organize, send and receive Short Message Service (SMS) messages by selecting between a **Setup**, **Inbox** and **Drafts** tab. These messages can either be saved to the router's internal memory or on the SIM/UICC card itself.

Short Message Settings

Inbox

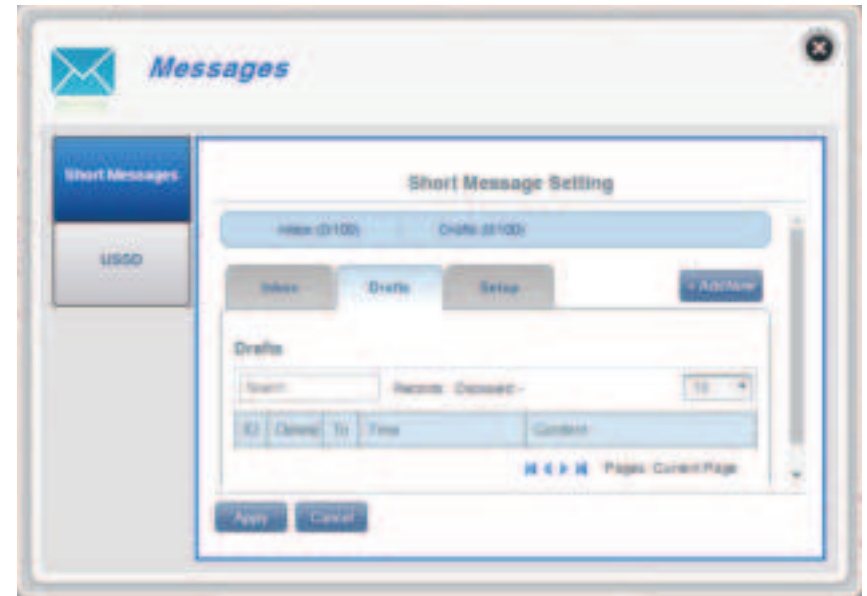
- ID** A chronological number given to each message you receive.
 - Delete** Check this box to select and delete a message in your inbox.
 - From** The SMS sender's number.
 - Time** The time the message was received.
 - Content** The SMS message's content.
 - Add New** Click **Add New** to send a new message.
- Click **Apply** to save changes.



Drafts

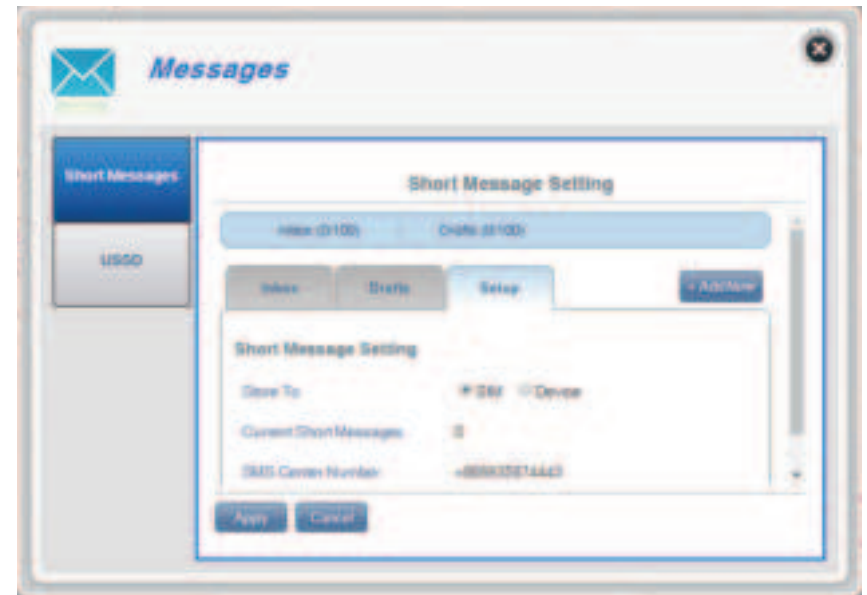
- ID** A chronological number given to each message you save to draft.
- Delete** Check this box to select and delete a message in your drafts folder.
- To** The SMS recipient's number.
- Time** The time the message was last edited.
- Content** The SMS message's content.

Click **Apply** to save changes.



Setup

- Store To** Choose between the location to store contact numbers, either on your SIM/UICC card or the DWR-932C device.
- Current Short Messages** The current number of messages received.
- SMS Center Number** Your SIM/UICC card's contact number.
Click **Apply** to save changes.

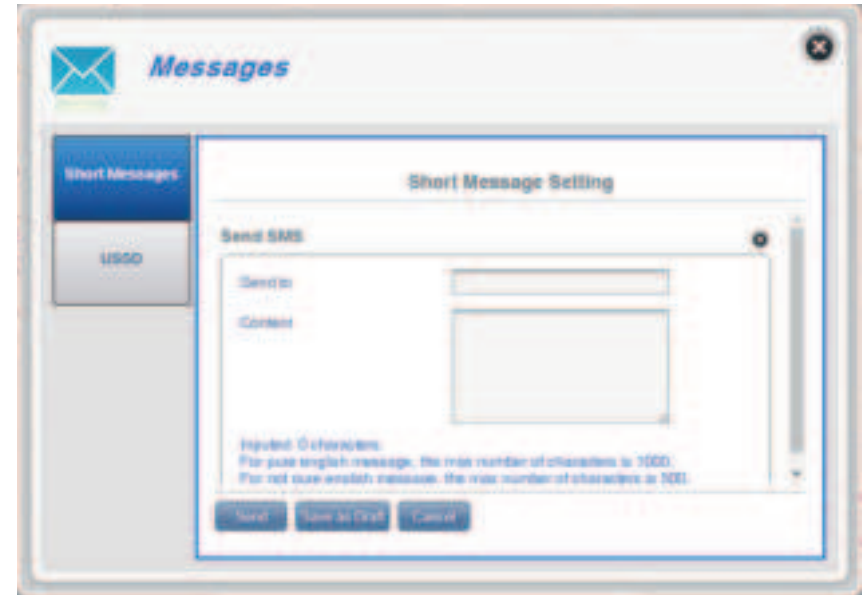


If you clicked Add New:

Send to Enter the phone number of the intended recipient here.

Content Type your message content here.

Click **Send** to send your message. Click **Save as Draft** to save the message as a draft and send it later.

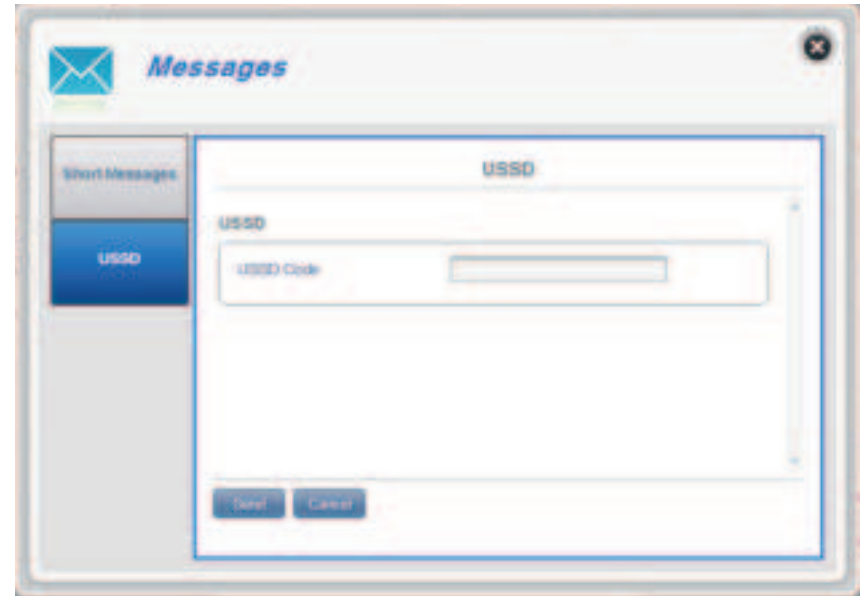


USSD

Unstructured Supplementary Service Data (USSD) allows ISP-specific applications to be activated with an SMS message.

USSD

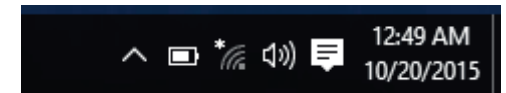
USSD Code Enter an application activation code and click the **Send** button. This will allow you to activate applications by sending an SMS to your ISP.



Connecting to a Wireless Network Using Windows 10

When connecting to the DWR-932C wirelessly for the first time, you will need to know the default network name (SSID) and security key (Wi-Fi password) being used. These can be found on a label on the underside of the battery cover.

To join an existing network, locate the wireless network icon in the taskbar, next to the time display and click on it.



Wireless Icon

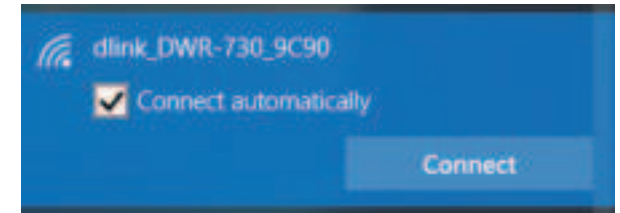
Clicking on this icon will display a list of wireless networks which are within connecting proximity of your computer. Select the desired network by clicking on the SSID.



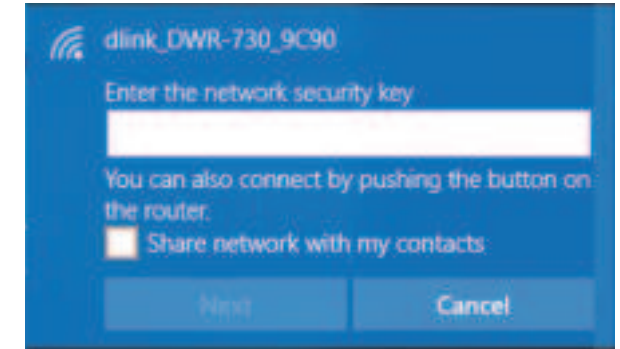
Section 3 - Configuration

To connect to the SSID, click **Connect**.

To automatically connect with the router when your device next detects the SSID, click the **Connect Automatically** check box.



You will then be prompted to enter the network security key (Wi-Fi password) for the wireless network. Enter the password into the box and click **Next** to connect to the network.



Using Windows 8

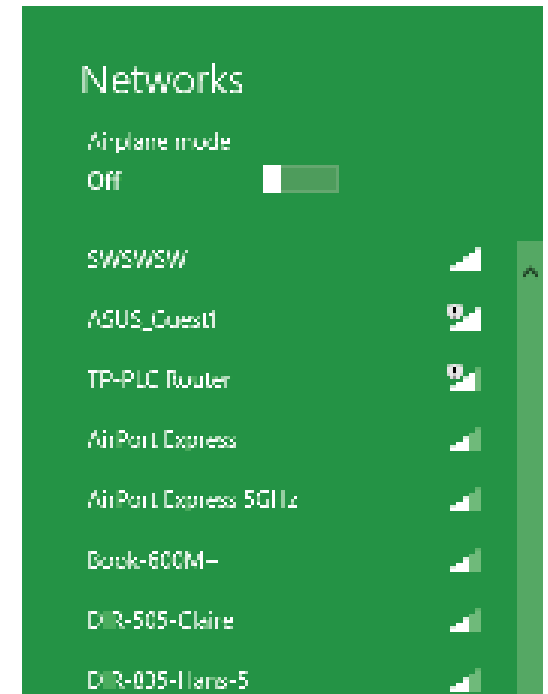
It is recommended to enable wireless security (WPA/WPA2) on your wireless router or access point before configuring your wireless adapter. If you are joining an existing network, you will need to know the security key (Wi-Fi password) being used.

To join an existing network, locate the wireless network icon in the taskbar, next to the time display.



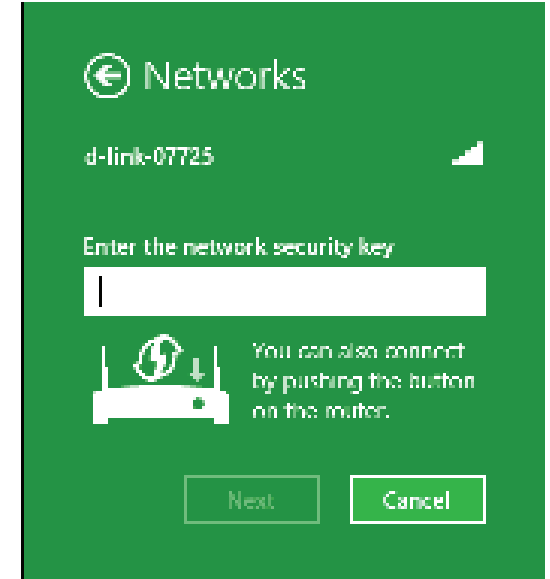
Wireless Icon

Clicking on this icon will display a list of wireless networks which are within connecting proximity of your computer. Select the desired network by clicking on the network name.

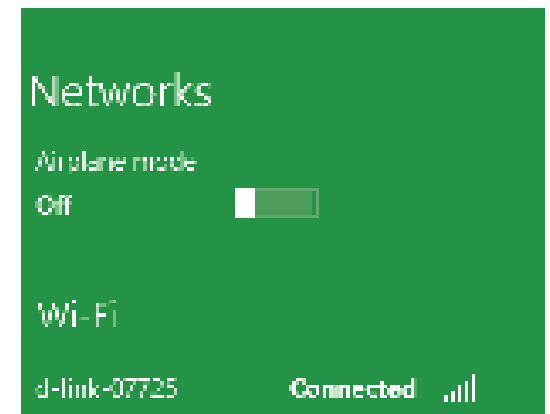


You will then be prompted to enter the network security key (Wi-Fi password) for the wireless network. If this is the first time connecting to your router, a unique security key for your router will be displayed on a sticker in the router's battery bay. Enter the password into the box and click Next.

If you wish to use Wi-Fi Protected Setup (WPS) to connect to the router, you can also press the WPS button on your router at this point to enable the WPS function.



When you have established a successful connection to a wireless network, the word **Connected** will appear next to the name of the network to which you are connected.



Connecting to a Wireless Network Using Windows 7

Windows 7 users may use the built-in wireless utility to connect to a wireless network. If you are using another company's utility or Windows 2000, please refer to the user manual of your wireless adapter for help with connecting to a wireless network. Most utilities will have a "site survey" option similar to the Windows 7 utility as seen below.

If you receive the Wireless Networks Detected bubble, click on the center of the bubble to access the utility. You can also click on the wireless icon in your system tray (lower-right corner).

The utility will display any available wireless networks in your area.



Highlight the wireless network (SSID) you would like to connect to and click the **Connect** button.

If you get a good signal but cannot access the Internet, check your TCP/IP settings for your wireless adapter. Refer to **Networking Basics** on page 75 for more information.



Configuring Wireless Encryption

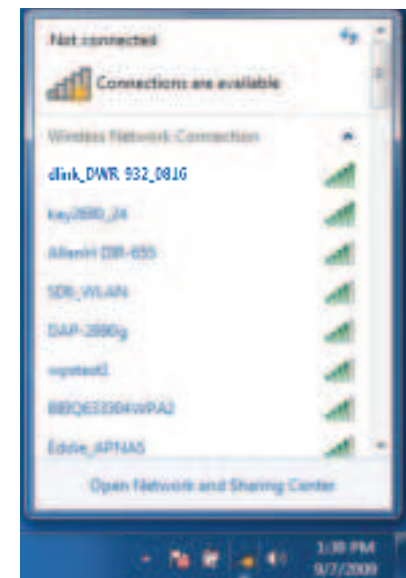
It is recommended to enable wireless encryption (WPA/WPA2) on your wireless router or access point before configuring your wireless adapter. If you are joining an existing network, you will need to know the security key or passphrase being used.

1. Click on the wireless icon in your system tray (lower-right corner).

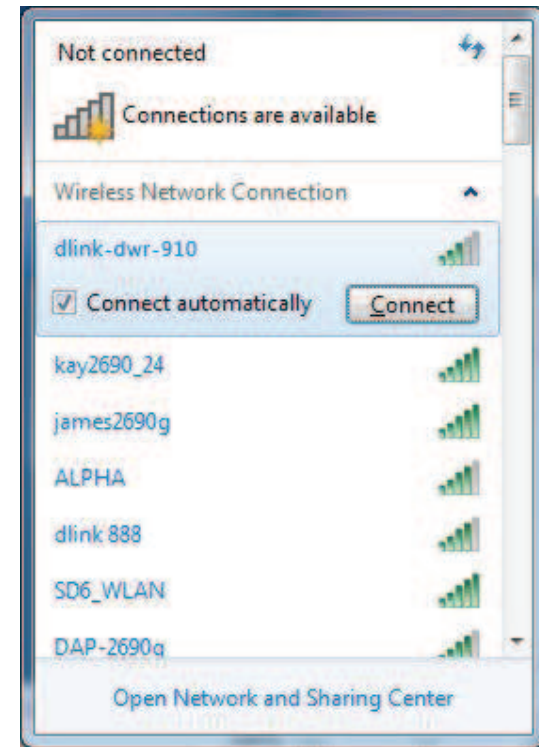


Wireless

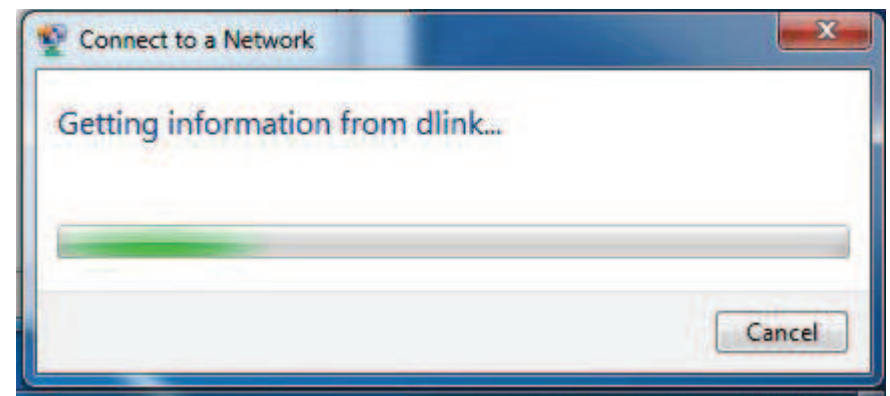
2. The utility will display any available wireless networks in your area.



3. Highlight the wireless network (SSID) you would like to connect to and click the **Connect** button.



4. The following window appears while your computer tries to connect to the router.



5. Enter the same security key or passphrase that is on your router and click **Connect**.

It may take 20-30 seconds to connect to the wireless network. If the connection fails, please verify that the security settings are correct. The key or pass phrase must be exactly the same as on the wireless router.



Using Windows Vista™

Windows® Vista™ users may use the built-in wireless utility. If you are using another company's utility or Windows® 2000, please refer to the user manual of your wireless adapter for help with connecting to a wireless network. Most utilities will have a "site survey" option similar to the Windows® Vista™ utility as seen below.

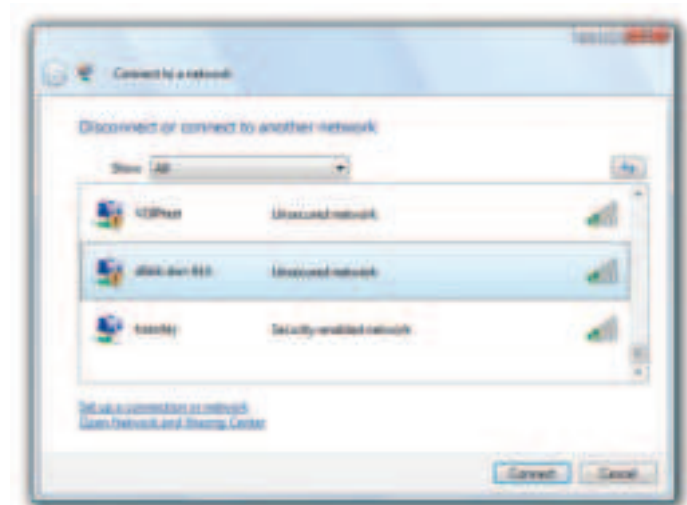
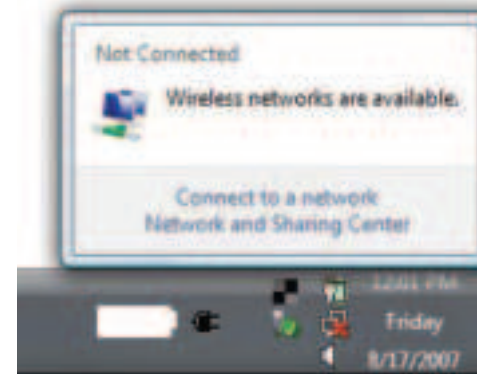
If you receive the **Wireless Networks Detected** bubble, click on the center of the bubble to access the utility.

or

Right-click on the wireless computer icon in your system tray (lower-right corner next to the time). Select **Connect to a network**.

The utility will display any available wireless networks in your area. Click on a network (displayed using the SSID) and click the **Connect** button.

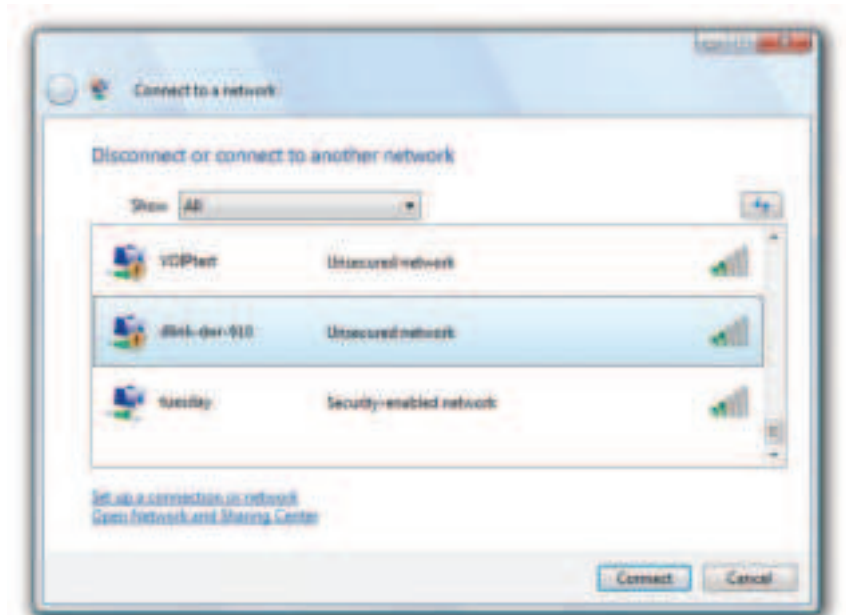
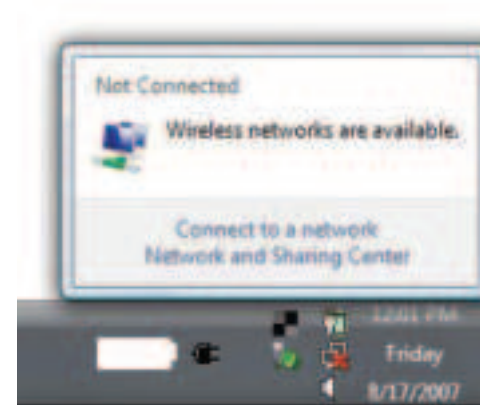
If you get a good signal but cannot access the Internet, check the TCP/IP settings for your wireless adapter. Refer to **Networking Basics** on page 75 for more information.



Configuring Wireless Encryption

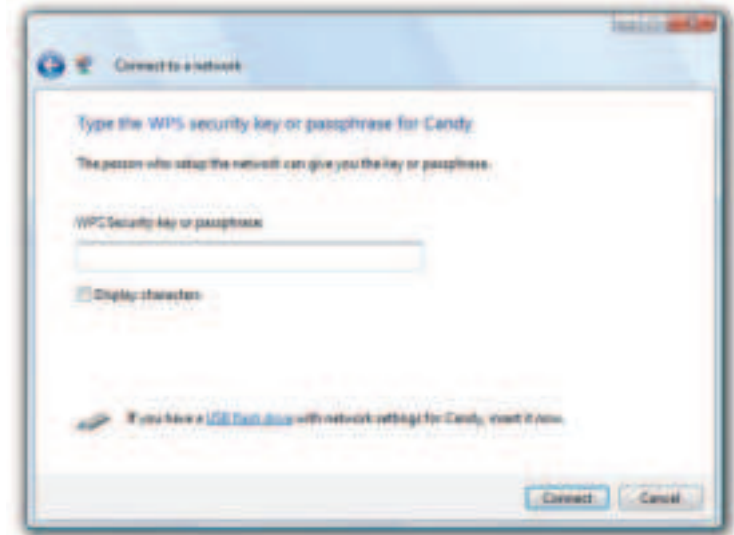
It is recommended to enable wireless encryption (WEP/WPA/WPA2) on your wireless router or access point before configuring your wireless adapter. If you are joining an existing network, you will need to know the security key or passphrase being used.

1. Open the Windows® Vista™ Wireless Utility by right-clicking on the wireless computer icon in your system tray (lower right corner of screen). Select **Connect to a network**.
2. Highlight the wireless network (SSID) you would like to connect to and click **Connect**.



3. Enter the same security key or pass phrase that is on your router and click **Connect**.

It may take 20-30 seconds to connect to the wireless network. If the connection fails, please verify that the security settings are correct. The key or passphrase must be exactly the same as on the wireless router.



Connect to a Wireless Network Using Windows® XP

Windows® XP users may use the built-in wireless utility (Zero Configuration Utility). The following instructions are for Service Pack 2 users. If you are using another company's utility or Windows® 2000, please refer to the user manual of your wireless adapter for help with connecting to a wireless network. Most utilities will have a "site survey" option similar to the Windows® XP utility as seen below.

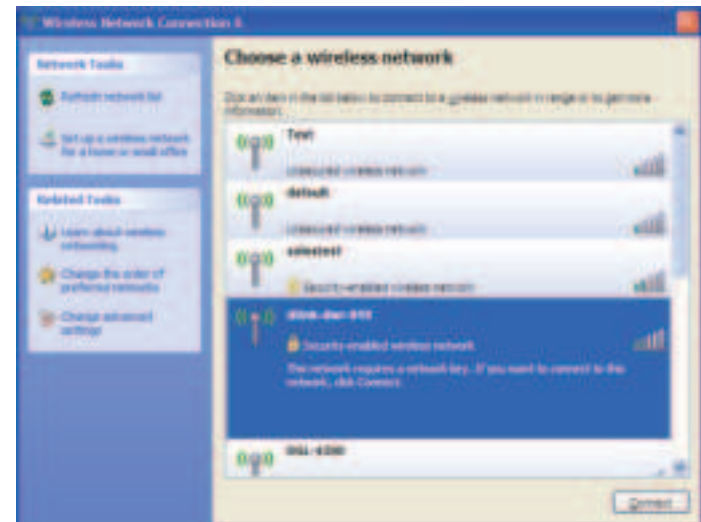
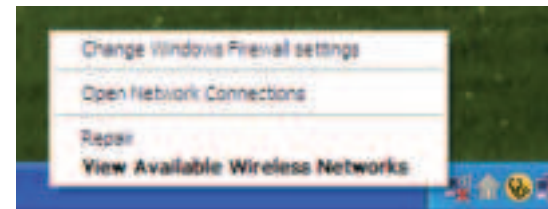
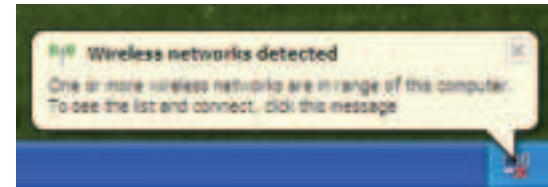
If you receive the **Wireless Networks Detected** bubble, click on the center of the bubble to access the utility.

or

Right-click on the wireless computer icon in your system tray (lower-right corner next to the time). Select **View Available Wireless Networks**.

The utility will display any available wireless networks in your area. Click on a network (displayed using the SSID) and click the **Connect** button.

If you get a good signal but cannot access the Internet, check the TCP/IP settings for your wireless adapter. Refer to **Networking Basics** on page 75 for more information.



Troubleshooting

This chapter provides solutions to problems that can occur during the installation and operation of the DWR-932C. Read the following descriptions if you are having problems.

1. Why can't I access the web-based configuration utility?

When entering the IP address of your router (192.168.0.1 for example), you are not connecting to a website on the Internet nor do you have to be connected to the Internet. The device has the utility built-in to a ROM chip in the device itself. Your computer must be on the same IP subnet to connect to the web-based utility.

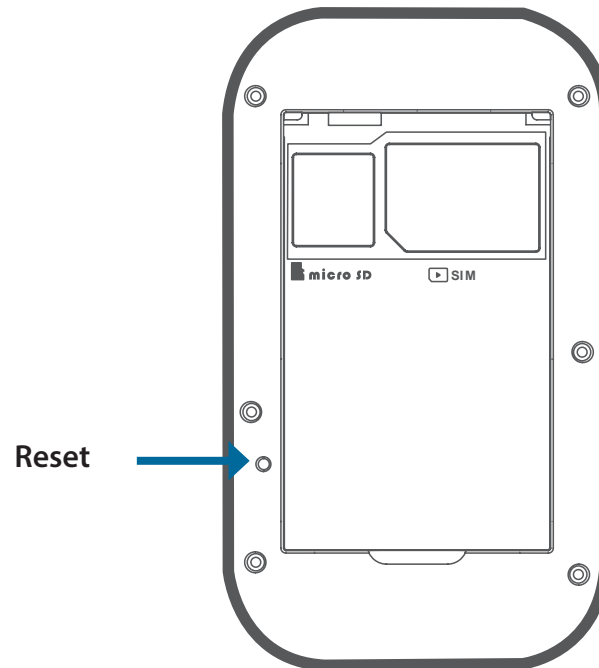
- Make sure you have an updated Java-enabled web browser. We recommend the following:
 - Internet Explorer 9 or higher, Chrome 28.0, Firefox 23.0, or Safari 6.
- If attempting to connect wirelessly, ensure that the wireless indicator on the OLED display is lit. Also, ensure that you are connected to the correct SSID for your mobile router.
- Make sure that the computer you are using is not connected to any other devices (such as routers or switches) which might have the same IP address as the DWR-932C, as this may cause an IP address conflict. If you have a conflict, temporarily unplug any other devices from your computer while you configure the DWR-932C. You can also change the IP address of the DWR-932C in the Network section of the configuration utility. You may also need to renew your computer's IP address configuration. To do this, start the Command utility: Click on **Start > Run**. In the run box type *cmd* and click **OK**. (Windows Vista users type *cmd* in the **Start Search** box.) This will bring up a black screen with white text. At the command prompt, type **ipconfig /release** and wait for the process to be completed. Next, type **ipconfig /renew** which will renew your computer's IP address configuration.
- Disable any Internet security software running on the computer. Software firewalls such as ZoneAlarm, BlackICE, Sygate, Norton Personal Firewall, and Windows® XP firewall may block access to the configuration pages. Check the help files included with your firewall software for more information on disabling or configuring it.
- Configure your Internet settings:
 - Go to **Start > Settings > Control Panel**. Double-click the **Internet Options** Icon. From the **Security** tab, click the **Default Level** button to restore the settings to their defaults.
 - Click the **Connection** tab and set the dial-up option to Never Dial a Connection. Click the LAN Settings button. Make sure nothing is checked. Click **OK**.
 - Go to the **Advanced** tab and click the button to restore these settings to their defaults. Click **OK** three times.

- Close your web browser (if open) and re-open it.

2. What can I do if I forgot my password?

If you forgot your password, you must reset your router. Please note that this process will change all your settings back to the factory defaults.

To reset the router, open the battery cover and using a paper clip, press and hold this button for 5 seconds to reboot the unit. The DWR-932C will restore the factory default settings. Replace the battery and turn the power on before you attempt to reconnect to it. The default IP address is 192.168.0.1, and the default username is **admin** and the password should be left blank.



Networking Basics

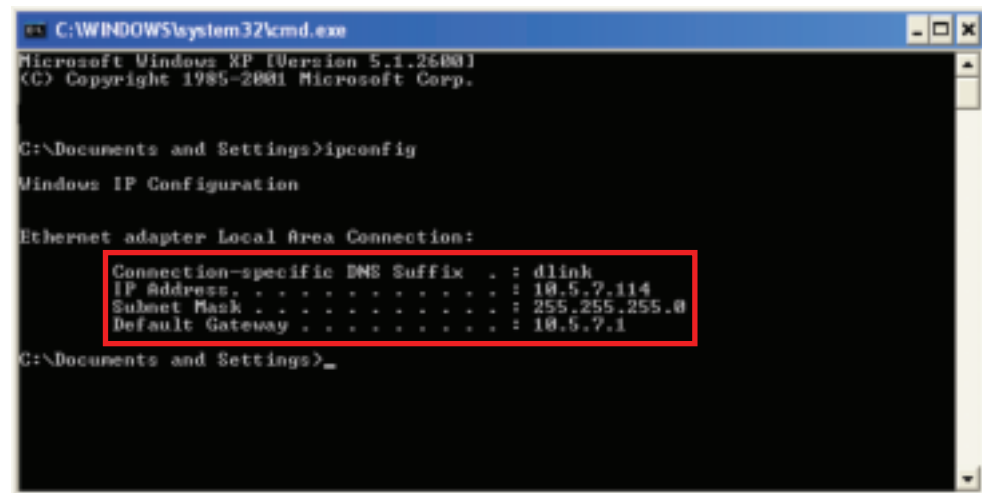
Check your IP address

After you install your new D-Link adapter, by default, the TCP/IP settings should be set to obtain an IP address from a DHCP server (i.e. wireless router) automatically. To verify your IP address, please follow the steps below.

Click on **Start > Run**. In the run box type *cmd* and click **OK**. (Windows® Vista™ users type *cmd* in the **Start Search** box.)

At the prompt, type *ipconfig* and press **Enter**.

This will display the IP address, subnet mask, and the default gateway of your adapter.



```
C:\WINDOWS\system32\cmd.exe
Microsoft Windows XP [Version 5.1.2600]
(C) Copyright 1985-2001 Microsoft Corp.

C:\Documents and Settings>ipconfig

Windows IP Configuration

Ethernet adapter Local Area Connection:

    Connection-specific DNS Suffix . : dlink
    IP Address. . . . . : 10.5.7.114
    Subnet Mask . . . . . : 255.255.255.0
    Default Gateway . . . . . : 10.5.7.1

C:\Documents and Settings>_
```

If the address is 0.0.0.0, check your adapter installation, security settings, and the settings on your router. Some firewall software programs may block a DHCP request on newly installed adapters.

Statically Assign an IP address

If you are not using a DHCP capable gateway/router, or you need to assign a static IP address, please follow the steps below:

Step 1

- Windows® 8 Click on **Start > Control Panel > Network and Internet Connections > Network Connections > Configure your Internet Protocol (IP) settings.**
- Windows® 7 Click on **Start > Control Panel > Network and Internet > Network and Sharing Center > Manage Network Connections.**
- Windows® Vista™ Click on **Start > Control Panel > Network and Internet > Network and Sharing Center > Manage Network Connections.**
- Windows® XP Click on **Start > Control Panel > Network Connections.**

Step 2

Right-click on the **Local Area Connection** which represents your network adapter and select **Properties.**

Step 3

Highlight **Internet Protocol (TCP/IP)** and click **Properties.**

Step 4

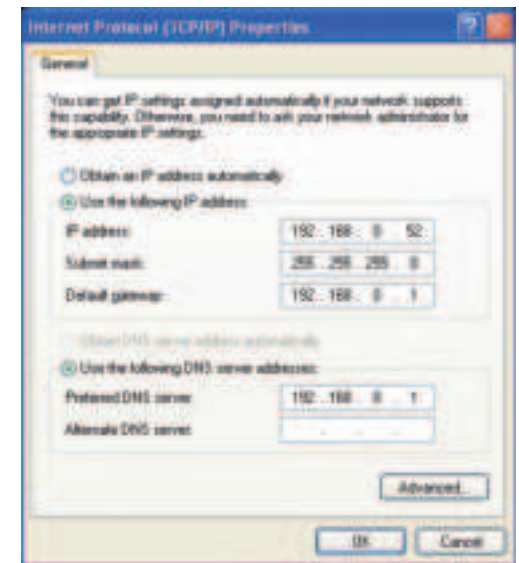
Click **Use the following IP address** and enter an IP address that is on the same subnet as your network or the LAN IP address on your router.

Example: If the router's LAN IP address is 192.168.0.1, make your IP address 192.168.0.X where X is a number between 2 and 99. Make sure that the number you choose is not in use on the network. Set Default Gateway the same as the LAN IP address of your router (192.168.0.1).

Set Primary DNS the same as the LAN IP address of your router (192.168.0.1). The Secondary DNS is not needed or you may enter a DNS server from your ISP.

Step 5

Click **OK** twice to save your settings.



Technical Specifications

Radio Frequency Bands¹

- SKU 1
 - FDD-LTE: Band 1/3/7/8/20
 - UMTS/HSPA+/DC-HSPA+: 900/2100 MHz
 - GSM: 900/1800MHz
- SKU 2
 - FDD-LTE: Band 1/3/5/38/40
 - UMTS/HSPA+/DC-HSPA+: 900/2100 MHz
 - GSM: 900/1800MHz

Cellular Access²

- LTE up to 150 Mbps Down/50 Mbps Up
- DC-HSPA+ up to 42 Mbps Up/5.76 Mbps Down
- EDGE up to 236.8 Kbps

Wi-Fi Access Point

- 802.11n
- 802.11g
- 802.11b

Antenna

- 1x Internal Cellular Antenna 1x2 MIMO (UL/DL)
- 2x Internal Wi-Fi Antenna

USB Interface

- Micro USB port

SIM/UICC Slot

- Standard mini-SIM/UICC card interface

Indicators

- LED Indicators

Wireless Encryption

- WPA & WPA2 (Wi-Fi Protected Access)

Firewall

- NAT
- Port Range Forwarding
- DMZ
- UPnP

Dimensions (L x W x H)

- 97 x 60 x 16.47 mm (3.82 x 2.63 x .65 in)

Weight

- 95 g (3.35 oz)

Operating Temperature

- 0 to 40 °C (32 to 104 °F)

Storage Temperature

- -20 to 70 °C (-4 to 158 °F)

¹ Supported frequency band is dependent upon regional hardware version.

² Data rates are theoretical. Data transfer rate depends on network capacity, signal strength, and other factors.

Regulatory Information

CE EMI Class A Warning

This equipment is compliant with Class A of CISPR 32. In a residential environment this equipment may cause radio interference.



	Frequency Band(s) Frequenzband Fréquence bande(s) Bandas de Frecuencia Frequenza/e Frequentie(s)	Max. Output Power (EIRP) Max. Output Power Consommation d'énergie max. Potencia máxima de Salida Potenza max. Output Max. Output Power
2.4 G	2.4 – 2.4835 GHz	100 mW

FCC Regulations:

This mobile phone complies with part 15 of the FCC Rules. Operation is subject to the following two conditions: (1) This device may not cause harmful interference, and (2) this device must accept any interference received, including interference that may cause undesired operation.

This mobile phone has been tested and found to comply with the limits for a Class B digital device, pursuant to Part 15 of the FCC Rules. These limits are designed to provide reasonable protection against harmful interference in a residential installation. This equipment generates, uses and can radiated radio frequency energy and, if not installed and used in accordance with the instructions, may cause harmful interference to radio communications. However, there is no guarantee that interference will not occur in a particular installation. If this equipment does cause harmful interference to radio or television reception, which can be determined by turning the equipment off and on, the user is encouraged to try to correct the interference by one or more of the following measures:

- Reorient or relocate the receiving antenna.
- Increase the separation between the equipment and receiver.
- Connect the equipment into an outlet on a circuit different from that to which the receiver is connected.
- Consult the dealer or an experienced radio/TV technician for help.

FCC Note:

Caution: Changes or modifications not expressly approved by the party responsible for compliance could void the user's authority to operate the equipment.

FCC RF Exposure Information (SAR)

This device is designed and manufactured not to exceed the emission limits for exposure to radio frequency (RF) energy set by the Federal Communications Commission of the United States.

During SAR testing, this device is set to transmit at its highest certified power level in all tested frequency bands, and placed in positions that simulate RF exposure in usage near the body. Although the SAR is determined at the highest certified power level, the actual SAR level of the while operating can be well below the maximum value. This is because the device is designed to operate at multiple power levels so as to use only the power required to reach the network. In general, the closer you are to a wireless base station antenna, the lower the power output.

The exposure standard for wireless employs a unit of measurement known as the Specific Absorption Rate, or SAR. The SAR limit set by the FCC is 1.6W/kg.

For this device, the highest reported SAR value for usage near the body is XXX W/kg.

SAR compliance for body operation is based on a separation distance of XX mm between the unit and the human body to ensure RF exposure level compliant or lower to the reported level.

While there may be differences between the SAR levels of various devices and at various positions, they all meet the government requirement.

European Community Declaration of Conformity:

Česky [Czech]	Tímto D-Link Corporation prohlašuje, že tento produkt, jeho příslušenství a software jsou v souladu se směrnicí 2014/53/EU. Celý text ES prohlášení o shodě vydaného EU a o firmwaru produktu lze stáhnout na stránkách k produktu www.dlink.com .
Dansk [Danish]	D-Link Corporation erklærer herved, at dette produkt, tilbehør og software er i overensstemmelse med direktiv 2014/53/EU. Den fulde tekst i EU-overensstemmelseserklæringen og produktfirmware kan wnloades fra produktsiden hos www.dlink.com .
Deutsch [German]	Hiermit erklärt die D-Link Corporation, dass dieses Produkt, das Zubehör und die Software der Richtlinie 2014/53/EU entsprechen. Der vollständige Text der Konformitätserklärung der Europäischen Gemeinschaft sowie die Firmware zum Produkt stehen Ihnen zum Herunterladen von der Produktseite im Internet auf www.dlink.com zur Verfügung.
Eesti [Estonian]	Käesolevaga kinnitab D-Link Corporation, et see toode, tarvikud ja tarkvara on kooskõlas direktiiviga 2014/53/EL. Euroopa Liidu vastavusdeklaratsiooni täistekst ja toote püsivara on allalaadimiseks saadaval tootelehel www.dlink.com .
English	Hereby, D-Link Corporation, declares that this product, accessories, and software are in compliance with directive 2014/53/EU. The full text of the EU Declaration of Conformity and product firmware are available for download from the product page at www.dlink.com
Español [Spanish]	Por la presente, D-Link Corporation declara que este producto, accesorios y software cumplen con las directivas 2014/53/UE. El texto completo de la declaración de conformidad de la UE y el firmware del producto están disponibles y se pueden descargar desde la página del producto en www.dlink.com .
Ελληνική [Greek]	Με την παρούσα, η D-Link Corporation δηλώνει ότι αυτό το προϊόν, τα αξεσουάρ και το λογισμικό συμμορφώνονται με την Οδηγία 2014/53/ΕΕ. Το πλήρες κείμενο της δήλωσης συμμόρφωσης της ΕΕ και το υλικολογισμικό του προϊόντος είναι διαθέσιμα για λήψη από τη σελίδα του προϊόντος στην τοποθεσία www.dlink.com .
Français [French]	Par les présentes, D-Link Corporation déclare que ce produit, ces accessoires et ce logiciel sont conformes aux directives 2014/53/UE. Le texte complet de la déclaration de conformité de l'UE et le icroprogramme du produit sont disponibles au téléchargement sur la page des produits à www.dlink.com .
Italiano [Italian]	Con la presente, D-Link Corporation dichiara che questo prodotto, i relativi accessori e il software sono conformi alla direttiva 2014/53/UE. Il testo completo della dichiarazione di conformità UE e il firmware del prodotto sono disponibili per il download dalla pagina del prodotto su www.dlink.com .

Latviski [Latvian]	Ar šo uzņēmums D-Link Corporation apliecina, ka šis produkts, piederumi un programmatūra atbilst direktīvai 2014/53/ES. ES atbilstības deklarācijas pilno tekstu un produkta aparātprogrammatūru var lejupielādēt attiecīgā produkta lapā vietnē www.dlink.com .
Lietuvių [Lithuanian]	Šiuo dokumentu „D-Link Corporation“ pareiškia, kad šis gaminys, priedai ir programinė įranga atitinka direktyvą 2014/53/ES. Visą ES atitikties deklaracijos tekstą ir gaminio programinę aparatinę įrangą galima atsisiųsti iš gaminio puslapio adresu www.dlink.com .
Nederlands [Dutch]	Hierbij verklaart D-Link Corporation dat dit product, accessoires en software voldoen aan de richtlijnen 2014/53/EU. De volledige tekst van de EU conformiteitsverklaring en productfirmware is beschikbaar voor download van de productpagina op www.dlink.com .
Malti [Maltese]	Bil-preżenti, D-Link Corporation tiddikjara li dan il-prodott, l-aċċessorji, u s-software huma konformi mad-Direttiva 2014/53/UE. Tista' tniżżel it-test sħiħ tad-dikjarazzjoni ta' konformità tal-UE u l-firmware tal-prodott mill-paġna tal-prodott fuq www.dlink.com .
Magyar [Hungarian]	Ezennel a D-Link Corporation kijelenti, hogy a jelen termék, annak tartozékai és szoftvere megfelelnek a 2014/53/EU sz. rendeletnek. Az EU Megfelelőségi nyilatkozat teljes szövege és a termék firmware a termék oldaláról tölthető le a www.dlink.com címen.
Polski [Polish]	D-Link Corporation niniejszym oświadcza, że ten produkt, akcesoria oraz oprogramowanie są zgodne z dyrektywami 2014/53/EU. Pełen tekst deklaracji zgodności UE oraz oprogramowanie sprzętowe do produktu można pobrać na stronie produktu w witrynie www.dlink.com .
Português [Portuguese]	Desta forma, a D-Link Corporation declara que este produto, os acessórios e o software estão em conformidade com a diretiva 2014/53/UE. O texto completo da declaração de conformidade da UE e do firmware
Slovensko[Slovenian]	Podjetje D-Link Corporation s tem izjavlja, da so ta izdelek, dodatna oprema in programnska oprema skladni z direktivami 2014/53/EU. Celotno besedilo izjave o skladnosti EU in vdelana programska oprema sta na voljo za prenos na strani izdelka na www.dlink.com .
Slovensky [Slovak]	Spoločnosť D-Link týmto vyhlasuje, že tento produkt, príslušenstvo a softvér sú v súlade so smernicou 214/53/EÚ. Úplné znenie vyhlásenia EÚ o zhode a firmvéri produktu sú k dispozícii na prevzatie zo stránky produktu www.dlink.com .
Suomi [Finnish]	D-Link Corporation täten vakuuttaa, että tämä tuote, lisävarusteet ja ohjelmisto ovat direktiivin 2014/53/EU vaatimusten mukaisia. Täydellinen EU-vaatimustenmukaisuusvakuutus samoin kuin tuotteen laiteohjelmisto ovat ladattavissa osoitteesta www.dlink.com .

Svenska [Swedish]	D-Link Corporation försäkrar härmed att denna produkt, tillbehör och programvara överensstämmer med direktiv 2014/53/EU. Hela texten med EU-försäkran om överensstämmelse och produkt-firmware kan hämtas från produktsidan på www.dlink.com .
Íslenska [Icelandic]	Hér með lýsir D-Link Corporation því yfir að þessi vara, fylgihlutir og hugbúnaður eru í samræmi við tilskipun 2014/53/EB. Sækja má ESB-samræmisýfirlýsinguna í heild sinni og fastbúnað vörunnar af vefsíðu vörunnar á www.dlink.com .
Norsk [Norwegian]	Herved erklærer D-Link Corporation at dette produktet, tilbehøret og programvaren er i samsvar med direktivet 2014/53/EU. Den fullstendige teksten i EU-erklæring om samsvar og produktets fastvare er tilgjengelig for nedlasting fra produktsiden på www.dlink.com .

Warning Statement:

The power outlet should be near the device and easily accessible.

NOTICE OF WIRELESS RADIO LAN USAGE IN THE EUROPEAN COMMUNITY (FOR WIRELESS PRODUCT ONLY):

- This device is restricted to indoor use when operated in the European Community using channels in the 5.15-5.35 GHz band to reduce the potential for interference.
- This device is a 2.4 GHz wideband transmission system (transceiver), intended for use in all EU member states and EFTA countries. This equipment may be operated in AL, AD, BE, BG, DK, DE, FI, FR, GR, GW, IS, IT, HR, LI, LU, MT, MK, MD, MC, NL, NO, AT, PL, PT, RO, SM, SE, RS, SK, ES, CI, HU, and CY.

Usage Notes:

- To remain in conformance with European National spectrum usage regulations, frequency and channel limitations will be applied on the products according to the country where the equipment will be deployed.
- This device is restricted from functioning in Ad-hoc mode while operating in 5 GHz. Ad-hoc mode is direct peer-to-peer communication between two client devices without an Access Point.
- Access points will support DFS (Dynamic Frequency Selection) and TPC (Transmit Power Control) functionality as required when operating in 5 GHz band within the EU.
- Please refer to the product manual or datasheet to check whether your product uses 2.4 GHz and/or 5 GHz wireless.

HINWEIS ZUR VERWENDUNG VON DRAHTLOS-NETZWERK (WLAN) IN DER EUROPÄISCHEN GEMEINSCHAFT (NUR FÜR EIN DRAHTLOSES PRODUKT)

- Der Betrieb dieses Geräts in der Europäischen Gemeinschaft bei Nutzung von Kanälen im 5,15-5,35 GHz Frequenzband ist ausschließlich auf Innenräume beschränkt, um das Interferenzpotential zu reduzieren.
- Bei diesem Gerät handelt es sich um ein zum Einsatz in allen EU-Mitgliedsstaaten und in EFTA-Ländern - ausgenommen Frankreich. Der Betrieb dieses Geräts ist in den folgenden Ländern erlaubt: AL, AD, BE, BG, DK, DE, FI, FR, GR, GW, IS, IT, HR, LI, LU, MT, MK, MD, MC, NL, NO, AT, PL, PT, RO, SM, SE, RS, SK, ES, CI, HU, CY

Gebrauchshinweise:

- Um den in Europa geltenden nationalen Vorschriften zum Nutzen des Funkspektrums weiterhin zu entsprechen, werden Frequenz und Kanalbeschränkungen, dem jeweiligen Land, in dem das Gerät zum Einsatz kommt, entsprechend, auf die Produkte angewandt.
- Die Funktionalität im Ad-hoc-Modus bei Betrieb auf 5 GHz ist für dieses Gerät eingeschränkt. Bei dem Ad-hoc-Modus handelt es sich um eine Peer-to-Peer-Kommunikation zwischen zwei Client-Geräten ohne einen Access Point.
- Access Points unterstützen die Funktionen DFS (Dynamic Frequency Selection) und TPC (Transmit Power Control) wie erforderlich bei Betrieb auf 5 GHz innerhalb der EU.
- Bitte schlagen Sie im Handbuch oder Datenblatt nach, ob Ihr Gerät eine 2,4 GHz und / oder 5 GHz Verbindung nutzt.

AVIS CONCERNANT L'UTILISATION DE LA RADIO SANS FIL LAN DANS LA COMMUNAUTÉ EUROPÉENNE (UNIQUEMENT POUR LES PRODUITS SANS FIL)

- Cet appareil est limité à un usage intérieur lorsqu'il est utilisé dans la Communauté européenne sur les canaux de la bande de 5,15 à 5,35 GHz afin de réduire les risques d'interférences.
- Cet appareil est un système de transmission à large bande (émetteur-récepteur) de 2,4 GHz, destiné à être utilisé dans tous les États-membres de l'UE et les pays de l'AELE. Cet équipement peut être utilisé dans les pays suivants : AL, AD, BE, BG, DK, DE, FI, FR, GR, GW, IS, IT, HR, LI, LU, MT, MK, MD, MC, NL, NO, AT, PL, PT, RO, SM, SE, RS, SK, ES, CI, HU, CY

Notes d'utilisation:

- Pour rester en conformité avec la réglementation nationale européenne en matière d'utilisation du spectre, des limites de fréquence et de canal seront appliquées aux produits selon le pays où l'équipement sera déployé.
- Cet appareil ne peut pas utiliser le mode Ad-hoc lorsqu'il fonctionne dans la bande de 5 GHz. Le mode Adhoc fournit une communication directe pair à pair entre deux périphériques clients sans point d'accès.
- Les points d'accès prendront en charge les fonctionnalités DFS (Dynamic Frequency Selection) et TPC (Transmit Power Control) au besoin lors du fonctionnement dans la bande de 5 GHz au sein de l'UE.
- Merci de vous référer au guide d'utilisation ou de la fiche technique afin de vérifier si votre produit utilise 2.4 GHz et/ou 5 GHz sans fil.

AVISO DE USO DE LA LAN DE RADIO INALÁMBRICA EN LA COMUNIDAD EUROPEA (SOLO PARA EL PRODUCTO INALÁMBRICO)

- El uso de este dispositivo está restringido a interiores cuando funciona en la Comunidad Europea utilizando canales en la banda de 5,15-5,35 GHz, para reducir la posibilidad de interferencias.
- Este dispositivo es un sistema de transmisión (transceptor) de banda ancha de 2,4 GHz, pensado para su uso en todos los estados miembros de la UE y en los países de la AELC. Este equipo se puede utilizar en AL, AD, BE, BG, DK, DE, FI, FR, GR, GW, IS, IT, HR, LI, LU, MT, MK, MD, MC, NL, NO, AT, PL, PT, RO, SM, SE, RS, SK, ES, CI, HU, CY

Notas de uso:

- Para seguir cumpliendo las normas europeas de uso del espectro nacional, se aplicarán limitaciones de frecuencia y canal en los productos en función del país en el que se pondrá en funcionamiento el equipo.
- Este dispositivo tiene restringido el funcionamiento en modo Ad-hoc mientras funcione a 5 Ghz. El modo Ad-hoc es la comunicación directa de igual a igual entre dos dispositivos cliente sin un punto de acceso.
- Los puntos de acceso admitirán la funcionalidad DFS (Selección de frecuencia dinámica) y TPC (Control de la potencia de transmisión) si es necesario cuando funcionan a 5 Ghz dentro de la UE.
- Por favor compruebe el manual o la ficha de producto para comprobar si el producto utiliza las bandas inalámbricas de 2.4 GHz y/o la de 5 GHz.

AVVISO PER L'USO DI LAN RADIO WIRELESS NELLA COMUNITÀ EUROPEA (SOLO PER PRODOTTI WIRELESS)

- Nella Comunità europea, l'uso di questo dispositivo è limitato esclusivamente agli ambienti interni sui canali compresi nella banda da 5,15 a 5,35 GHz al fine di ridurre potenziali interferenze. Questo dispositivo è un sistema di trasmissione a banda larga a 2,4 GHz (ricetrasmittente), destinato all'uso in tutti gli stati membri dell'Unione europea e nei paesi EFTA.
- Questo dispositivo può essere utilizzato in AL, AD, BE, BG, DK, DE, FI, FR, GR, GW, IS, IT, HR, LI, LU, MT, MK, MD, MC, NL, NO, AT, PL, PT, RO, SM, SE, RS, SK, ES, CI, HU, CY

Note per l'uso

- Al fine di mantenere la conformità alle normative nazionali europee per l'uso dello spettro di frequenze, saranno applicate limitazioni sulle frequenze e sui canali per il prodotto in conformità alle normative del paese in cui il dispositivo viene utilizzato.
- Questo dispositivo non può essere attivato in modalità Ad-hoc durante il funzionamento a 5 GHz. La modalità Ad-hoc è una comunicazione diretta peer-to-peer fra due dispositivi client senza un punto di accesso.
- I punti di accesso supportano le funzionalità DFS (Dynamic Frequency Selection) e TPC (Transmit Power Control) richieste per operare a 5 GHz nell'Unione europea.
- Ti invitiamo a fare riferimento al manuale del prodotto o alla scheda tecnica per verificare se il tuo prodotto utilizza le frequenze 2,4 GHz e/o 5 GHz.

KENNISGEVING VAN DRAADLOOS RADIO LAN-GEbruik IN DE EUROPESE GEMEENSCHAP (ALLEEN VOOR DRAADLOOS PRODUCT)

- Dit toestel is beperkt tot gebruik binnenshuis wanneer het wordt gebruikt in de Europese Gemeenschap gebruik makend van kanalen in de 5.15-5.35 GHz band om de kans op interferentie te beperken.
- Dit toestel is een 2.4 GHz breedband transmissiesysteem (transceiver) dat bedoeld is voor gebruik in alle EU lidstaten en EFTA landen. Deze uitrusting mag gebruikt worden in AL, AD, BE, BG, DK, DE, FI, FR, GR, GW, IS, IT, HR, LI, LU, MT, MK, MD, MC, NL, NO, AT, PL, PT, RO, SM, SE, RS, SK, ES, CI, HU, CY

Gebruiksaanwijzingen:

- Om de gebruiksvoorschriften van het Europese Nationale spectrum na te leven, zullen frequentie- en kanaalbeperkingen worden toegepast op de producten volgens het land waar de uitrusting gebruikt zal worden.
- Dit toestel kan niet functioneren in Ad-hoc mode wanneer het gebruikt wordt in 5 GHz. Ad-hoc mode is directe peer-to-peer communicatie tussen twee klantenapparaten zonder een toegangspunt.
- Toegangspunten ondersteunen DFS (Dynamic Frequency Selection) en TPC (Transmit Power Control) functionaliteit zoals vereist bij gebruik in 5 GHz binnen de EU.
- Raadpleeg de handleiding of de datasheet om te controleren of uw product gebruik maakt van 2.4 GHz en/of 5 GHz.

SAFETY INSTRUCTIONS

The following general safety guidelines are provided to help ensure your own personal safety and protect your product from potential damage. Remember to consult the product user instructions for more details.

- Static electricity can be harmful to electronic components. Discharge static electricity from your body (i.e. touching grounded bare metal) before touching the product.
- Do not attempt to service the product and never disassemble the product. For some products with a user replaceable battery, please read and follow the instructions in the user manual.
- Do not spill food or liquid on your product and never push any objects into the openings of your product.
- Do not use this product near water, areas with high humidity, or condensation unless the product is specifically rated for outdoor application.
- Keep the product away from radiators and other heat sources.
- Always unplug the product from mains power before cleaning and use a dry lint free cloth only.

SICHERHEITSVORSCHRIFTEN

Die folgenden allgemeinen Sicherheitsvorschriften dienen als Hilfe zur Gewährleistung Ihrer eigenen Sicherheit und zum Schutz Ihres Produkts. Weitere Details finden Sie in den Benutzeranleitungen zum Produkt.

- Statische Elektrizität kann elektronischen Komponenten schaden. Um Schäden durch statische Aufladung zu vermeiden, leiten Sie elektrostatische Ladungen von Ihrem Körper ab, (z. B. durch Berühren eines geerdeten blanken Metallteils), bevor Sie das Produkt berühren.
- Unterlassen Sie jeden Versuch, das Produkt zu warten, und versuchen Sie nicht, es in seine Bestandteile zu zerlegen. Für einige Produkte mit austauschbaren Akkus lesen Sie bitte das Benutzerhandbuch und befolgen Sie die dort beschriebenen Anleitungen.
- Vermeiden Sie, dass Speisen oder Flüssigkeiten auf Ihr Produkt gelangen, und stecken Sie keine Gegenstände in die Gehäuseschlitze oder -öffnungen Ihres Produkts.
- Verwenden Sie dieses Produkt nicht in unmittelbarer Nähe von Wasser und nicht in Bereichen mit hoher Luftfeuchtigkeit oder Kondensation, es sei denn, es ist speziell zur Nutzung in Außenbereichen vorgesehen und eingestuft.
- Halten Sie das Produkt von Heizkörpern und anderen Quellen fern, die Wärme erzeugen.
- Trennen Sie das Produkt immer von der Stromzufuhr, bevor Sie es reinigen und verwenden Sie dazu ausschließlich ein trockenes fusselfreies Tuch.

CONSIGNES DE SÉCURITÉ

Les consignes générales de sécurité ci-après sont fournies afin d'assurer votre sécurité personnelle et de protéger le produit d'éventuels dommages. Veuillez consulter les consignes d'utilisation du produit pour plus de détails.

- L'électricité statique peut endommager les composants électroniques. Déchargez l'électricité statique de votre corps (en touchant un objet en métal relié à la terre par exemple) avant de toucher le produit.
- N'essayez pas d'intervenir sur le produit et ne le démontez jamais. Pour certains produits contenant une batterie remplaçable par l'utilisateur, veuillez lire et suivre les consignes contenues dans le manuel d'utilisation.
- Ne renversez pas d'aliments ou de liquide sur le produit et n'insérez jamais d'objets dans les orifices.
- N'utilisez pas ce produit à proximité d'un point d'eau, de zones très humides ou de condensation sauf si le produit a été spécifiquement conçu pour une application extérieure.
- Éloignez le produit des radiateurs et autres sources de chaleur.
- Débranchez toujours le produit de l'alimentation avant de le nettoyer et utilisez uniquement un chiffon sec non pelucheux.

INSTRUCCIONES DE SEGURIDAD

Las siguientes directrices de seguridad general se facilitan para ayudarle a garantizar su propia seguridad personal y para proteger el producto frente a posibles daños. No olvide consultar las instrucciones del usuario del producto para obtener más información.

- La electricidad estática puede resultar nociva para los componentes electrónicos. Descargue la electricidad estática de su cuerpo (p. ej., tocando algún metal sin revestimiento conectado a tierra) antes de tocar el producto.
- No intente realizar el mantenimiento del producto ni lo desmonte nunca. Para algunos productos con batería reemplazable por el usuario, lea y siga las instrucciones del manual de usuario.
- No derrame comida o líquidos sobre el producto y nunca deje que caigan objetos en las aberturas del mismo.
- No utilice este producto cerca del agua, en zonas con humedad o condensación elevadas a menos que el producto esté clasificado específicamente para aplicación en exteriores.
- Mantenga el producto alejado de los radiadores y de otras fuentes de calor.
- Desenchufe siempre el producto de la alimentación de red antes de limpiarlo y utilice solo un paño seco sin pelusa.

ISTRUZIONI PER LA SICUREZZA

Le seguenti linee guida sulla sicurezza sono fornite per contribuire a garantire la sicurezza personale degli utenti e a proteggere il prodotto da potenziali danni. Per maggiori dettagli, consultare le istruzioni per l'utente del prodotto.

- L'elettricità statica può essere pericolosa per i componenti elettronici. Scaricare l'elettricità statica dal corpo (ad esempio toccando una parte metallica collegata a terra) prima di toccare il prodotto.
- Non cercare di riparare il prodotto e non smontarlo mai. Per alcuni prodotti dotati di batteria sostituibile dall'utente, leggere e seguire le istruzioni riportate nel manuale dell'utente.
- Non versare cibi o liquidi sul prodotto e non spingere mai alcun oggetto nelle aperture del prodotto.
- Non usare questo prodotto vicino all'acqua, in aree con elevato grado di umidità o soggette a condensa a meno che il prodotto non sia specificatamente approvato per uso in ambienti esterni.
- Tenere il prodotto lontano da caloriferi e altre fonti di calore.
- Scollegare sempre il prodotto dalla presa elettrica prima di pulirlo e usare solo un panno asciutto che non lasci filacce.

VEILIGHEIDSINFORMATIE

De volgende algemene veiligheidsinformatie werd verstrekt om uw eigen persoonlijke veiligheid te waarborgen en uw product te beschermen tegen mogelijke schade. Denk eraan om de gebruikersinstructies van het product te raadplegen voor meer informatie.

- Statische elektriciteit kan schadelijk zijn voor elektronische componenten. Ontlaad de statische elektriciteit van uw lichaam (d.w.z. het aanraken van geaard bloot metaal) voordat u het product aanraakt.
- U mag nooit proberen het product te onderhouden en u mag het product nooit demonteren. Voor sommige producten met door de gebruiker te vervangen batterij, dient u de instructies in de gebruikershandleiding te lezen en te volgen.
- Mors geen voedsel of vloeistof op uw product en u mag nooit voorwerpen in de openingen van uw product duwen.
- Gebruik dit product niet in de buurt van water, gebieden met hoge vochtigheid of condensatie, tenzij het product specifiek geclassificeerd is voor gebruik buitenshuis.
- Houd het product uit de buurt van radiators en andere warmtebronnen.
- U dient het product steeds los te koppelen van de stroom voordat u het reinigt en gebruik uitsluitend een droge pluisvrije doek.

Disposing of and Recycling Your Product

ENGLISH

EN



This symbol on the product or packaging means that according to local laws and regulations this product should not be disposed of in household waste but sent for recycling. Please take it to a collection point designated by your local authorities once it has reached the end of its life, some will accept products for free. By recycling the product and its packaging in this manner you help to conserve the environment and protect human health.

D-Link and the Environment

At D-Link, we understand and are committed to reducing any impact our operations and products may have on the environment. To minimise this impact D-Link designs and builds its products to be as environmentally friendly as possible, by using recyclable, low toxic materials in both products and packaging.

D-Link recommends that you always switch off or unplug your D-Link products when they are not in use. By doing so you will help to save energy and reduce CO2 emissions.

To learn more about our environmentally responsible products and packaging please visit www.dlinkgreen.com.

DEUTSCH

DE



Dieses Symbol auf dem Produkt oder der Verpackung weist darauf hin, dass dieses Produkt gemäß bestehender örtlicher Gesetze und Vorschriften nicht über den normalen Hausmüll entsorgt werden sollte, sondern einer Wiederverwertung zuzuführen ist. Bringen Sie es bitte zu einer von Ihrer Kommunalbehörde entsprechend amtlich ausgewiesenen Sammelstelle, sobald das Produkt das Ende seiner Nutzungsdauer erreicht hat. Für die Annahme solcher Produkte erheben einige dieser Stellen keine Gebühren. Durch ein auf diese Weise durchgeführtes Recycling des Produkts und seiner Verpackung helfen Sie, die Umwelt zu schonen und die menschliche Gesundheit zu schützen.

D-Link und die Umwelt

D-Link ist sich den möglichen Auswirkungen seiner Geschäftstätigkeiten und seiner Produkte auf die Umwelt bewusst und fühlt sich verpflichtet, diese entsprechend zu mindern. Zu diesem Zweck entwickelt und stellt D-Link seine Produkte mit dem Ziel größtmöglicher Umweltfreundlichkeit her und verwendet wiederverwertbare, schadstoffarme Materialien bei Produktherstellung und Verpackung.

D-Link empfiehlt, Ihre Produkte von D-Link, wenn nicht in Gebrauch, immer auszuschalten oder vom Netz zu nehmen. Auf diese Weise helfen Sie, Energie zu sparen und CO2-Emissionen zu reduzieren.

Wenn Sie mehr über unsere umweltgerechten Produkte und Verpackungen wissen möchten, finden Sie entsprechende Informationen im Internet unter www.dlinkgreen.com.

FRANÇAIS**FR**

Ce symbole apposé sur le produit ou son emballage signifie que, conformément aux lois et réglementations locales, ce produit ne doit pas être éliminé avec les déchets domestiques mais recyclé. Veuillez le rapporter à un point de collecte prévu à cet effet par les autorités locales; certains accepteront vos produits gratuitement. En recyclant le produit et son emballage de cette manière, vous aidez à préserver l'environnement et à protéger la santé de l'homme.

D-Link et l'environnement

Chez D-Link, nous sommes conscients de l'impact de nos opérations et produits sur l'environnement et nous engageons à le réduire. Pour limiter cet impact, D-Link conçoit et fabrique ses produits de manière aussi écologique que possible, en utilisant des matériaux recyclables et faiblement toxiques, tant dans ses produits que ses emballages.

D-Link recommande de toujours éteindre ou débrancher vos produits D-Link lorsque vous ne les utilisez pas. Vous réaliserez ainsi des économies d'énergie et réduirez vos émissions de CO₂.

Pour en savoir plus sur les produits et emballages respectueux de l'environnement, veuillez consulter le www.dlinkgreen.com.

ESPAÑOL**ES**

Este símbolo en el producto o el embalaje significa que, de acuerdo con la legislación y la normativa local, este producto no se debe desechar en la basura doméstica sino que se debe reciclar. Llévelo a un punto de recogida designado por las autoridades locales una vez que ha llegado al fin de su vida útil; algunos de ellos aceptan recogerlos de forma gratuita. Al reciclar el producto y su embalaje de esta forma, contribuye a preservar el medio ambiente y a proteger la salud de los seres humanos.

D-Link y el medio ambiente

En D-Link, comprendemos y estamos comprometidos con la reducción del impacto que puedan tener nuestras actividades y nuestros productos en el medio ambiente. Para reducir este impacto, D-Link diseña y fabrica sus productos para que sean lo más ecológicos posible, utilizando materiales reciclables y de baja toxicidad tanto en los productos como en el embalaje.

D-Link recomienda apagar o desenchufar los productos D-Link cuando no se estén utilizando. Al hacerlo, contribuirá a ahorrar energía y a reducir las emisiones de CO₂.

Para obtener más información acerca de nuestros productos y embalajes ecológicos, visite el sitio www.dlinkgreen.com.

ITALIANO**IT**

La presenza di questo simbolo sul prodotto o sulla confezione del prodotto indica che, in conformità alle leggi e alle normative locali, questo prodotto non deve essere smaltito nei rifiuti domestici, ma avviato al riciclo. Una volta terminato il ciclo di vita utile, portare il prodotto presso un punto di raccolta indicato dalle autorità locali. Alcuni questi punti di raccolta accettano gratuitamente i prodotti da riciclare. Scegliendo di riciclare il prodotto e il relativo imballaggio, si contribuirà a preservare l'ambiente e a salvaguardare la salute umana.

D-Link e l'ambiente

D-Link cerca da sempre di ridurre l'impatto ambientale dei propri stabilimenti e dei propri prodotti. Allo scopo di ridurre al minimo tale impatto, D-Link progetta e realizza i propri prodotti in modo che rispettino il più possibile l'ambiente, utilizzando materiali riciclabili a basso tasso di tossicità sia per i prodotti che per gli imballaggi.

D-Link raccomanda di spegnere sempre i prodotti D-Link o di scollegarne la spina quando non vengono utilizzati. In questo modo si contribuirà a risparmiare energia e a ridurre le emissioni di anidride carbonica.

Per ulteriori informazioni sui prodotti e sugli imballaggi D-Link a ridotto impatto ambientale, visitate il sito all'indirizzo www.dlinkgreen.com.

NEDERLANDS**NL**

Dit symbool op het product of de verpakking betekent dat dit product volgens de plaatselijke wetgeving niet mag worden weggegooid met het huishoudelijk afval, maar voor recyclage moeten worden ingeleverd. Zodra het product het einde van de levensduur heeft bereikt, dient u het naar een inzamelpunt te brengen dat hiertoe werd aangeduid door uw plaatselijke autoriteiten, sommige autoriteiten accepteren producten zonder dat u hiervoor dient te betalen. Door het product en de verpakking op deze manier te recyclen helpt u het milieu en de gezondheid van de mens te beschermen.

D-Link en het milieu

Bij D-Link spannen we ons in om de impact van onze handelingen en producten op het milieu te beperken. Om deze impact te beperken, ontwerpt en bouwt D-Link zijn producten zo milieuvriendelijk mogelijk, door het gebruik van recycleerbare producten met lage toxiciteit in product en verpakking.

D-Link raadt aan om steeds uw D-Link producten uit te schakelen of uit de stekker te halen wanneer u ze niet gebruikt. Door dit te doen bespaart u energie en beperkt u de CO₂-emissies.

Breng een bezoek aan www.dlinkgreen.com voor meer informatie over onze milieuverantwoorde producten en verpakkingen.

POLSKI**PL**

Ten symbol umieszczony na produkcie lub opakowaniu oznacza, że zgodnie z miejscowym prawem i lokalnymi przepisami niniejszego produktu nie wolno wyrzucać jak odpady czy śmieci z gospodarstwa domowego, lecz należy go poddać procesowi recyklingu. Po zakończeniu użytkowania produktu, niektóre odpowiednie do tego celu podmioty przyjmą takie produkty nieodpłatnie, dlatego prosimy dostarczyć go do punktu zbiórki wskazanego przez lokalne władze. Poprzez proces recyklingu i dzięki takiemu postępowaniu z produktem oraz jego opakowaniem, pomogą Państwo chronić środowisko naturalne i dbać o ludzkie zdrowie.

D-Link i środowisko

D-Link podchodzimy w sposób świadomy do ochrony otoczenia oraz jesteśmy zaangażowani w zmniejszanie wpływu naszych działań i produktów na środowisko naturalne. W celu zminimalizowania takiego wpływu firma D-Link konstruuje i wytwarza swoje produkty w taki sposób, aby były one jak najbardziej przyjazne środowisku, stosując do tych celów materiały nadające się do powtórnego wykorzystania, charakteryzujące się małą toksycznością zarówno w przypadku samych produktów jak i opakowań.

Firma D-Link zaleca, aby Państwo zawsze prawidłowo wyłączali z użytku swoje produkty D-Link, gdy nie są one wykorzystywane. Postępując w ten sposób pozwalają Państwo oszczędzać energię i zmniejszać emisje CO₂.

Aby dowiedzieć się więcej na temat produktów i opakowań mających wpływ na środowisko prosimy zapoznać się ze stroną Internetową www.dlinkgreen.com.

ČESKY**CZ**

Tento symbol na výrobku nebo jeho obalu znamená, že podle místně platných předpisů se výrobek nesmí vyhazovat do komunálního odpadu, ale odeslat k recyklaci. Až výrobek doslouží, odnešte jej prosím na sběrné místo určené místními úřady k tomuto účelu. Někteřá sběrná místa přijímají výrobky zdarma. Recyklací výrobku i obalu pomáháte chránit životní prostředí i lidské zdraví.

D-Link a životní prostředí

Ve společnosti D-Link jsme si vědomi vlivu našich provozů a výrobků na životní prostředí a snažíme se o minimalizaci těchto vlivů. Proto své výrobky navrhujeme a vyrábíme tak, aby byly co nejekologičtější, a ve výrobcích i obalech používáme recyklovatelné a nízkotoxické materiály.

Společnost D-Link doporučuje, abyste své výrobky značky D-Link vypnuli nebo vytáhli ze zásuvky vždy, když je nepoužíváte. Pomůžete tak šetřit energii a snížit emise CO₂.

Více informací o našich ekologických výrobcích a obalech najdete na adrese www.dlinkgreen.com.

MAGYAR**HU**

Ez a szimbólum a terméken vagy a csomagoláson azt jelenti, hogy a helyi törvényeknek és szabályoknak megfelelően ez a termék nem semmisíthető meg a háztartási hulladékkal együtt, hanem újrahasznosításra kell küldeni. Kérjük, hogy a termék élettartamának elteltét követően vigye azt a helyi hatóság által kijelölt gyűjtőhelyre. A termékek egyes helyeken ingyen elhelyezhetők. A termék és a csomagolás újrahasznosításával segíti védeni a környezetet és az emberek egészségét.

A D-Link és a környezet

A D-Linknél megértjük és elköteleztük magunkat a műveleteink és termékeink környezetre gyakorolt hatásainak csökkentésére. Az ezen hatás csökkentése érdekében a D-Link a lehető leginkább környezetbarát termékeket tervez és gyárt azáltal, hogy újrahasznosítható, alacsony károsanyag-tartalmú termékeket gyárt és csomagolásokat alkalmaz.

A D-Link azt javasolja, hogy mindig kapcsolja ki vagy húzza ki a D-Link termékeket a tápforrásból, ha nem használja azokat. Ezzel segít az energia megtakarításában és a széndioxid kibocsátásának csökkentésében.

Környezetbarát termékeinkről és csomagolásainkról további információkat a www.dlinkgreen.com weboldalon tudhat meg.

NORSK**NO**

Dette symbolet på produktet eller forpakningen betyr at dette produktet ifølge lokale lover og forskrifter ikke skal kastes sammen med husholdningsavfall, men leveres inn til gjenvinning. Vennligst ta det til et innsamlingssted anvist av lokale myndigheter når det er kommet til slutten av levetiden. Noen steder aksepteres produkter uten avgift. Ved på denne måten å gjenvinne produktet og forpakningen hjelper du å verne miljøet og beskytte folks helse.

D-Link og miljøet

Hos D-Link forstår vi oss på og er forpliktet til å minske innvirkningen som vår drift og våre produkter kan ha på miljøet. For å minimalisere denne innvirkningen designer og lager D-Link produkter som er så miljøvennlig som mulig, ved å bruke resirkulerbare, lav-toksiske materialer både i produktene og forpakningen.

D-Link anbefaler at du alltid slår av eller frakobler D-Link-produkter når de ikke er i bruk. Ved å gjøre dette hjelper du å spare energi og å redusere CO2-utslipp.

For mer informasjon angående våre miljøansvarlige produkter og forpakninger kan du gå til www.dlinkgreen.com.

DANSK**DK**

Dette symbol på produktet eller emballagen betyder, at dette produkt i henhold til lokale love og regler ikke må bortskaffes som husholdningsaffald, mens skal sendes til genbrug. Indlever produktet til et indsamlingssted som angivet af de lokale myndigheder, når det er nået til slutningen af dets levetid. I nogle tilfælde vil produktet blive modtaget gratis. Ved at indlevere produktet og dets emballage til genbrug på denne måde bidrager du til at beskytte miljøet og den menneskelige sundhed.

D-Link og miljøet

Hos D-Link forstår vi og bestræber os på at reducere enhver indvirkning, som vores aktiviteter og produkter kan have på miljøet. For at minimere denne indvirkning designer og producerer D-Link sine produkter, så de er så miljøvenlige som muligt, ved at bruge genanvendelige materialer med lavt giftighedsniveau i både produkter og emballage.

D-Link anbefaler, at du altid slukker eller frakobler dine D-Link-produkter, når de ikke er i brug. Ved at gøre det bidrager du til at spare energi og reducere CO₂-udledningerne.

Du kan finde flere oplysninger om vores miljømæssigt ansvarlige produkter og emballage på www.dlinkgreen.com.

SUOMI**FI**

Tämä symboli tuotteen pakkauksessa tarkoittaa, että paikallisten lakien ja säännösten mukaisesti tätä tuotetta ei pidä hävittää yleisen kotitalousjätteen seassa vaan se tulee toimittaa kierrätettäväksi. Kun tuote on elinkaarensa päässä, toimita se lähimpään viranomaisten hyväksymään kierrätyspisteeseen. Kierrättämällä käytetyn tuotteen ja sen pakkauksen autat tukemaan sekä ympäristön että ihmisten terveyttä ja hyvinvointia.

D-Link ja ympäristö

D-Link ymmärtää ympäristönsuojelun tärkeyden ja on sitoutunut vähentämään tuotteistaan ja niiden valmistuksesta ympäristölle mahdollisesti aiheutuvia haittavaikutuksia. Nämä negatiiviset vaikutukset minimoidakseen D-Link suunnittelee ja valmistaa tuotteensa mahdollisimman ympäristöystävällisiksi käyttämällä kierrätettäviä, alhaisia pitoisuuksia haitallisia aineita sisältäviä materiaaleja sekä tuotteissaan että niiden pakkauksissa.

Suosittellemme, että irrotat D-Link-tuotteesi virtalähteestä tai sammutat ne aina, kun ne eivät ole käytössä. Toimimalla näin autat säästämään energiaa ja vähentämään hiilidioksiidipäästöjä.

Lue lisää ympäristöystävällisistä D-Link-tuotteista ja pakkauksistamme osoitteesta www.dlinkgreen.com.

SVENSKA**SE**

Den här symbolen på produkten eller förpackningen betyder att produkten enligt lokala lagar och föreskrifter inte skall kastas i hushållssoporna utan i stället återvinnas. Ta den vid slutet av dess livslängd till en av din lokala myndighet utsedd uppsamlingsplats, vissa accepterar produkter utan kostnad. Genom att på detta sätt återvinna produkten och förpackningen hjälper du till att bevara miljön och skydda människors hälsa.

D-Link och miljön

På D-Link förstår vi och är fast beslutna att minska den påverkan våra verksamheter och produkter kan ha på miljön. För att minska denna påverkan utformar och bygger D-Link sina produkter för att de ska vara så miljövänliga som möjligt, genom att använda återvinningsbara material med låg gifthalt i både produkter och förpackningar.

D-Link rekommenderar att du alltid stänger av eller kopplar ur dina D-Link produkter när du inte använder dem. Genom att göra detta hjälper du till att spara energi och minska utsläpp av koldioxid.

För mer information om våra miljöansvariga produkter och förpackningar www.dlinkgreen.com.

PORTUGUÊS**PT**

Este símbolo no produto ou embalagem significa que, de acordo com as leis e regulamentações locais, este produto não deverá ser eliminado juntamente com o lixo doméstico mas enviado para a reciclagem. Transporte-o para um ponto de recolha designado pelas suas autoridades locais quando este tiver atingido o fim da sua vida útil, alguns destes pontos aceitam produtos gratuitamente. Ao reciclar o produto e respectiva embalagem desta forma, ajuda a preservar o ambiente e protege a saúde humana.

A D-Link e o ambiente

Na D-Link compreendemos e comprometemo-nos com a redução do impacto que as nossas operações e produtos possam ter no ambiente. Para minimizar este impacto a D-Link concebe e constrói os seus produtos para que estes sejam o mais inofensivos para o ambiente possível, utilizando materiais recicláveis e não tóxicos tanto nos produtos como nas embalagens.

A D-Link recomenda que desligue os seus produtos D-Link quando estes não se encontrarem em utilização. Com esta acção ajudará a poupar energia e reduzir as emissões de CO₂.

Para saber mais sobre os nossos produtos e embalagens responsáveis a nível ambiental visite www.dlinkgreen.com.