

INSTRUCTION MANUAL



43347 RTD Temperature Probe, **43502 and 41003-5 Radiation** **Shields**

Revision: 1/17



Copyright © 1994-2017
Campbell Scientific, Inc.

WARRANTY AND ASSISTANCE

This equipment is warranted by CAMPBELL SCIENTIFIC (CANADA) CORP. ("CSC") to be free from defects in materials and workmanship under normal use and service for **twelve (12) months** from date of shipment unless specified otherwise. ***** **Batteries are not warranted.** ***** CSC's obligation under this warranty is limited to repairing or replacing (at CSC's option) defective products. The customer shall assume all costs of removing, reinstalling, and shipping defective products to CSC. CSC will return such products by surface carrier prepaid. This warranty shall not apply to any CSC products which have been subjected to modification, misuse, neglect, accidents of nature, or shipping damage. This warranty is in lieu of all other warranties, expressed or implied, including warranties of merchantability or fitness for a particular purpose. CSC is not liable for special, indirect, incidental, or consequential damages.

Products may not be returned without prior authorization. To obtain a Return Merchandise Authorization (RMA), contact CAMPBELL SCIENTIFIC (CANADA) CORP., at (780) 454-2505. An RMA number will be issued in order to facilitate Repair Personnel in identifying an instrument upon arrival. Please write this number clearly on the outside of the shipping container. Include description of symptoms and all pertinent details.

CAMPBELL SCIENTIFIC (CANADA) CORP. does not accept collect calls.

Non-warranty products returned for repair should be accompanied by a purchase order to cover repair costs.



Campbell Scientific (Canada) Corp.
14532 131 Avenue NW | Edmonton AB T5L 4X4
780.454.2505 | fax 780.454.2655 | campbellsci.ca

Assistance

Products may not be returned without prior authorization. The following contact information is for Canadian and international clients residing in countries served by Campbell Scientific (Canada) Corp. directly. Affiliate companies handle repairs for clients within their territories. Please visit www.campbellsci.ca to determine which Campbell Scientific company serves your country.

To obtain a Returned Materials Authorization (RMA), contact CAMPBELL SCIENTIFIC (CANADA) CORP., phone (780) 454-2505. After a measurement consultant determines the nature of the problem, an RMA number will be issued. Please write this number clearly on the outside of the shipping container. Campbell Scientific's shipping address is:

CAMPBELL SCIENTIFIC (CANADA) CORP.

RMA# _____
14532 131 Avenue NW
Edmonton, Alberta T5L 4X4
Canada

For all returns, the client must fill out a "Statement of Product Cleanliness and Decontamination" form and comply with the requirements specified in it. The form is available from our web site at www.campbellsci.ca/repair. A completed form must be either emailed to repair@campbellsci.ca or faxed to (780) 454-2655. Campbell Scientific (Canada) Corp. is unable to process any returns until we receive this form. If the form is not received within three days of product receipt or is incomplete, the product will be returned to the client at the client's expense. Campbell Scientific (Canada) Corp. reserves the right to refuse service on products that were exposed to contaminants that may cause health or safety concerns for our employees.

Precautions

DANGER — MANY HAZARDS ARE ASSOCIATED WITH INSTALLING, USING, MAINTAINING, AND WORKING ON OR AROUND TRIPODS, TOWERS, AND ANY ATTACHMENTS TO TRIPODS AND TOWERS SUCH AS SENSORS, CROSSARMS, ENCLOSURES, ANTENNAS, ETC. FAILURE TO PROPERLY AND COMPLETELY ASSEMBLE, INSTALL, OPERATE, USE, AND MAINTAIN TRIPODS, TOWERS, AND ATTACHMENTS, AND FAILURE TO HEED WARNINGS, INCREASES THE RISK OF DEATH, ACCIDENT, SERIOUS INJURY, PROPERTY DAMAGE, AND PRODUCT FAILURE. TAKE ALL REASONABLE PRECAUTIONS TO AVOID THESE HAZARDS. CHECK WITH YOUR ORGANIZATION'S SAFETY COORDINATOR (OR POLICY) FOR PROCEDURES AND REQUIRED PROTECTIVE EQUIPMENT PRIOR TO PERFORMING ANY WORK.

Use tripods, towers, and attachments to tripods and towers only for purposes for which they are designed. Do not exceed design limits. Be familiar and comply with all instructions provided in product manuals. Manuals are available at www.campbellsci.ca or by telephoning (780) 454-2505 (Canada). You are responsible for conformance with governing codes and regulations, including safety regulations, and the integrity and location of structures or land to which towers, tripods, and any attachments are attached. Installation sites should be evaluated and approved by a qualified personnel (e.g. engineer). If questions or concerns arise regarding installation, use, or maintenance of tripods, towers, attachments, or electrical connections, consult with a licensed and qualified engineer or electrician.

General

- Prior to performing site or installation work, obtain required approvals and permits.
- Use only qualified personnel for installation, use, and maintenance of tripods and towers, and any attachments to tripods and towers. The use of licensed and qualified contractors is highly recommended.
- Read all applicable instructions carefully and understand procedures thoroughly before beginning work.
- Wear a **hardhat** and **eye protection**, and take **other appropriate safety precautions** while working on or around tripods and towers.
- **Do not climb** tripods or towers at any time, and prohibit climbing by other persons. Take reasonable precautions to secure tripod and tower sites from trespassers.
- Use only manufacturer recommended parts, materials, and tools.

Utility and Electrical

- **You can be killed** or sustain serious bodily injury if the tripod, tower, or attachments you are installing, constructing, using, or maintaining, or a tool, stake, or anchor, come in **contact with overhead or underground utility lines**.
- Maintain a distance of at least one-and-one-half times structure height, 6 meters (20 feet), or the distance required by applicable law, **whichever is greater**, between overhead utility lines and the structure (tripod, tower, attachments, or tools).
- Prior to performing site or installation work, inform all utility companies and have all underground utilities marked.
- Comply with all electrical codes. Electrical equipment and related grounding devices should be installed by a licensed and qualified electrician.

Elevated Work and Weather

- Exercise extreme caution when performing elevated work.
- Use appropriate equipment and safety practices.
- During installation and maintenance, keep tower and tripod sites clear of un-trained or non-essential personnel. Take precautions to prevent elevated tools and objects from dropping.
- Do not perform any work in inclement weather, including wind, rain, snow, lightning, etc.

Maintenance

- Periodically (at least yearly) check for wear and damage, including corrosion, stress cracks, frayed cables, loose cable clamps, cable tightness, etc. and take necessary corrective actions.
- Periodically (at least yearly) check electrical ground connections.

WHILE EVERY ATTEMPT IS MADE TO EMBODY THE HIGHEST DEGREE OF SAFETY IN ALL CAMPBELL SCIENTIFIC PRODUCTS, THE CLIENT ASSUMES ALL RISK FROM ANY INJURY RESULTING FROM IMPROPER INSTALLATION, USE, OR MAINTENANCE OF TRIPODS, TOWERS, OR ATTACHMENTS TO TRIPODS AND TOWERS SUCH AS SENSORS, CROSSARMS, ENCLOSURES, ANTENNAS, ETC.

PLEASE READ FIRST

About this manual

Please note that this manual was originally produced by Campbell Scientific Inc. (CSI) primarily for the US market. Some spellings, weights and measures may reflect this origin.

Some useful conversion factors:

Area:	1 in ² (square inch) = 645 mm ²
Length:	1 in. (inch) = 25.4 mm
	1 ft (foot) = 304.8 mm
	1 yard = 0.914 m
	1 mile = 1.609 km
Mass:	1 oz. (ounce) = 28.35 g
	1 lb (pound weight) = 0.454 kg
Pressure:	1 psi (lb/in ²) = 68.95 mb
Volume:	1 US gallon = 3.785 litres

In addition, part ordering numbers may vary. For example, the CABLE5CBL is a CSI part number and known as a FIN5COND at Campbell Scientific Canada (CSC). CSC Technical Support will be pleased to assist with any questions.

About sensor wiring

Please note that certain sensor configurations may require a user supplied jumper wire. It is recommended to review the sensor configuration requirements for your application and supply the jumper wire is necessary.

Table of Contents

PDF viewers: These page numbers refer to the printed version of this document. Use the PDF reader bookmarks tab for links to specific sections.

1. Introduction	1
2. Precautions	1
3. Initial Inspection.....	1
4. QuickStart.....	1
4.1 Uncalibrated 43347	2
4.2 Calibrated 43347	4
5. Overview	7
6. Specifications.....	7
6.1 43347 Rtd Temperature Probe	8
6.2 43502 Aspirated Radiation Shield	8
6.3 41003-5 Radiation Shield.....	9
7. Installation.....	9
7.1 Siting	9
7.2 Required Tools.....	10
7.3 Radiation Shield Installation	10
7.3.1 43502 Radiation Shield Mounting	10
7.3.2 41003-5 Radiation Shield Mounting.....	15
7.4 Wiring	16
7.4.1 43347 Sensor Wiring	16
7.4.1.1 –VX Wiring.....	17
7.4.1.2 –IX Wiring	18
7.4.2 43502 Aspirated Radiation Shield Wiring	19
7.5 Datalogger Programming	20
7.5.1 Program Structure	20
7.5.2 BRHalf4W() CRBasic Instruction	21
7.5.3 Resistance() CRBasic Instruction	21
7.5.4 Calibration Equation	21
7.5.5 PRT() CRBasic Instruction	22
7.5.6 Pulse() CRBasic Instruction.....	22
8. Operation	22
8.1 Resistance Measurement Instruction Details	22
8.1.1 Determining the Excitation Current	23
8.1.2 Reducing Measurement Noise	24
9. Troubleshooting and Maintenance	24

9.1	Maintenance	24
9.2	Troubleshooting	24
9.3	43347 Probe Calibration.....	25

10. Attributes and References.....25

Appendices

A. Importing *Short Cut* Code Into *CRBasic Editor* ... A-1

B. Example Programs..... B-1

B.1	43347-VX Programs	B-1
B.1.1	CR1000 Example for Calibrated 43347-VX Probes	B-1
B.1.2	CR1000 Example for Uncalibrated 43347-VX Probes	B-2
B.2	43347-IX Programs	B-3
B.2.1	CR3000 Example for Calibrated 43347-IX Probe	B-4
B.2.2	CR3000 Example for Uncalibrated 43347-IX Probe	B-4

C. 43502 Aspirated Radiation Shield..... C-1

D. 43408 Aspirated Radiation Shield..... D-1

D.1	Specifications	D-2
D.2	Installation.....	D-3

E. Measure Two 43347-IX Probes Using One Current Excitation Channel E-1

E.1	Wiring	E-2
E.2	Example Program for Two Calibrated 43347-IX Probes	E-3

Figures

7-1.	43502 Radiation Shield mounted to tripod mast	10
7-2.	43502 Radiation Shield mounted to a CM200-series Crossarm.....	11
7-3.	43347 probe and bushing	12
7-4.	43347 probe mounted inside the 43502 shield	12
7-5.	43502 shield terminals.....	13
7-6.	Closeup of terminal box	14
7-7.	41003-5 Radiation Shield mounted to tripod mast	15
7-8.	41003-5 Radiation Shield mounted to a CM200-series Crossarm	16
7-9.	43347-VX Temperature Probe wiring	17
7-10.	43347-IX Temperature Probe schematic	18
7-11.	43502 Aspirated Shield wiring.....	19
D-1.	43347 RTD Temperature Probe and 43408 Aspirated Radiation Shield	D-2
D-2.	PN 7515 10 m Aspirated Shield Mounting Bracket	D-3
D-3.	43408 Aspirated Radiation Shield wiring	D-4
E-1.	Schematic for two 43347-IX Temperature Probes	E-2

Tables

7-1.	Datalogger Connections for –VX option	17
7-2.	Datalogger Connections for –IX Option	18
7-3.	43502 Blower/Tachometer Connections	19
7-4.	CRBasic Instructions Used to measure the 43347	20
B-1.	Wiring for Measurement Examples	B-1
B-2.	Wiring for Measurement Examples	B-2
B-3.	Wiring for Measurement Examples	B-3
E-1.	Wiring for Two 43347-IX Probes Example	E-3

CRBasic Examples

B-1.	CR1000 Example for Calibrated 43347-VX Probes	B-2
B-2.	CR1000 Example for Uncalibrated 43347-VX Probes	B-3
B-3.	CR3000 Example for Calibrated 43347-IX Probe	B-4
B-4.	CR3000 Example for Uncalibrated 43347-IX Probe	B-4
E-1.	CR3000 Example for Two Calibrated 43347-IX Probes	E-3

43347 RTD Temperature Probe, 43502 and 41003-5 Radiation Shields

1. Introduction

The 43347 is a highly-accurate RTD that often provides delta temperature measurements for air quality applications. Typically, it is housed in the 43502 fan-aspirated radiation shield, which greatly reduces radiation errors. It may also be used with the 41003-5 10-plate naturally-aspirated radiation shield.

NOTE

This manual provides information only for CRBasic dataloggers. It is also compatible with many of our retired Edlog dataloggers. For Edlog datalogger support, see an older manual at www.campbellsci.com/old-manuals.

2. Precautions

- READ AND UNDERSTAND the [Safety](#) section at the front of this manual.
- Care should be taken when opening the shipping package to not damage or cut the cable jacket. If damage to the cable is suspected, contact Campbell Scientific.
- Although the 43347 and 43502 are rugged, they should be handled as a precision scientific instrument.
- The black outer jacket of the cable is Santoprene® rubber. This compound was chosen for its resistance to temperature extremes, moisture, and UV degradation. However, this jacket will support combustion in air. It is rated as slow burning when tested according to U.L. 94 H.B. and will pass FMVSS302. Local fire codes may preclude its use inside buildings.

3. Initial Inspection

- Upon receipt of the 43347 and 43502, inspect the packaging and contents for damage. File damage claims with the shipping company.
- Immediately check package contents against the shipping documentation. Contact Campbell Scientific about any discrepancies.

4. QuickStart

Short Cut is an easy way to program your datalogger to measure the CS106 and assign datalogger wiring terminals. Use the following procedures to get started.

NOTE

Short Cut only supports the –VX option. Programming and wiring information is provided for the –IX option in Section 7, *Installation* (p. 9).

4.1 Uncalibrated 43347

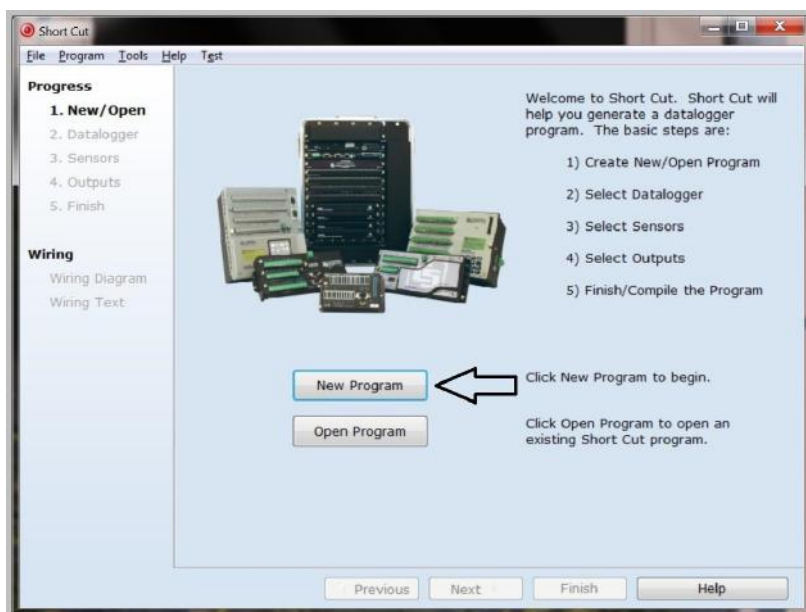
1. Install *Short Cut* by clicking on the install file icon. Get the install file from either www.campbellsci.com, the ResourceDVD, or find it in installations of *LoggerNet*, *PC200W*, *PC400*, or *RTDAQ* software.



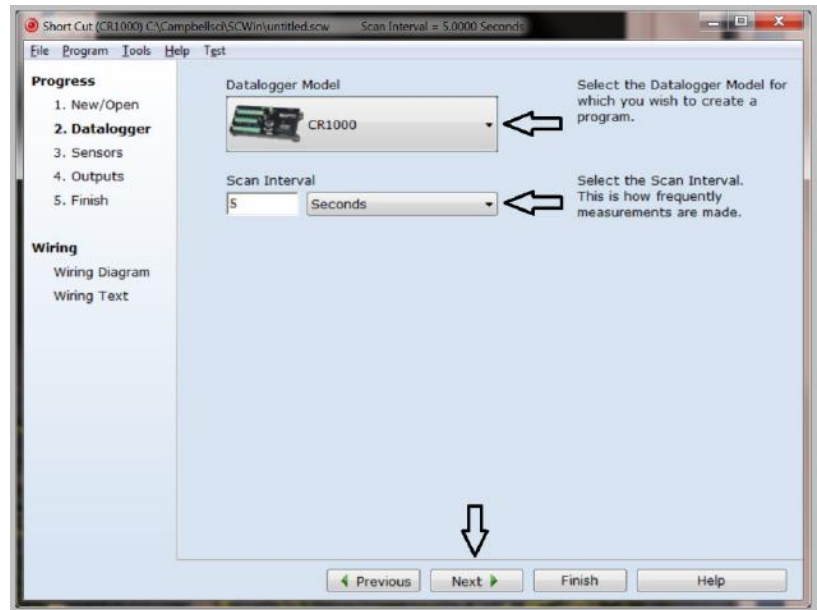
2. The *Short Cut* installation should place a *Short Cut* icon on the desktop of your computer. To open *Short Cut*, click on this icon.




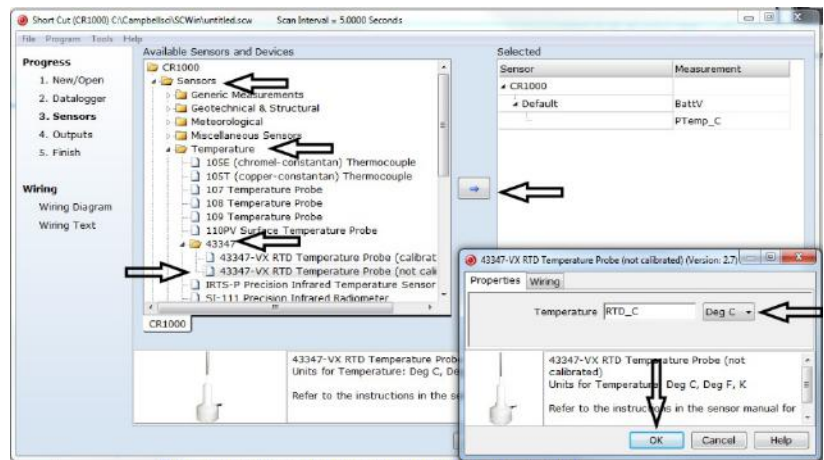
3. When *Short Cut* opens, select New Program.



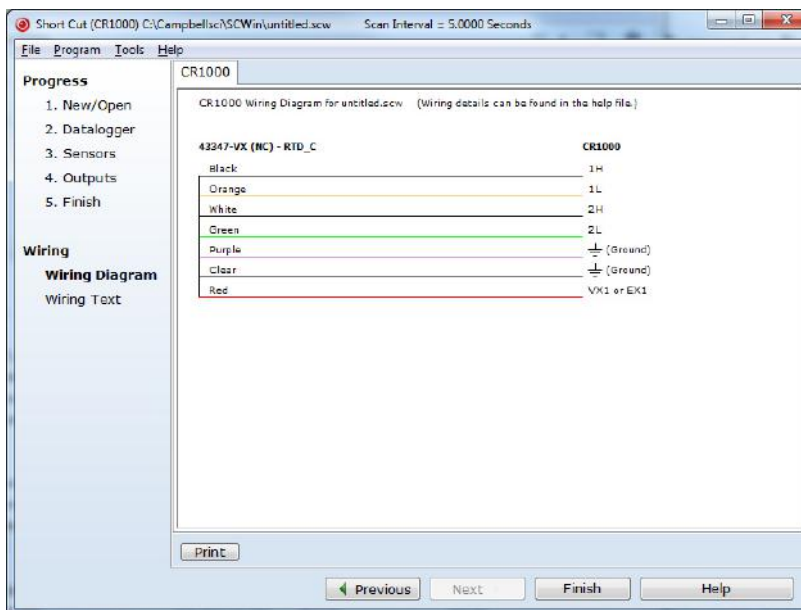
4. Select **Datalogger Model** and **Scan Interval** (default of 5 seconds is OK for most applications). Click **Next**.



5. Under the **Available Sensors and Devices** list, select **Sensors | Temperature | 43347** folder. Select **43347-VX RTD Temperature Probe (not Calibrated)**. Click  to move the selection to the Selected device window. Data defaults to degrees Celsius. This can be changed by clicking the **Deg C** box and selecting **Deg F**, for degrees Fahrenheit, or **K** for Kelvin.



6. After selecting the sensor, click at the left of the screen on **Wiring Diagram** to see how the sensor is to be wired to the datalogger. The wiring diagram can be printed out now or after more sensors are added.



7. Select any other sensors you have, then finish the remaining *Short Cut* steps to complete the program. The remaining steps are outlined in *Short Cut Help*, which is accessed by clicking on **Help | Contents | Programming Steps**.
8. If *LoggerNet*, *PC400*, *RTDAQ*, or *PC200W* is running on your PC, and the PC to datalogger connection is active, you can click **Finish** in *Short Cut* and you will be prompted to send the program just created to the datalogger.
9. If the sensor is connected to the datalogger, as shown in the wiring diagram in step 6, check the output of the sensor in the datalogger support software data display to make sure it is making reasonable measurements.

4.2 Calibrated 43347

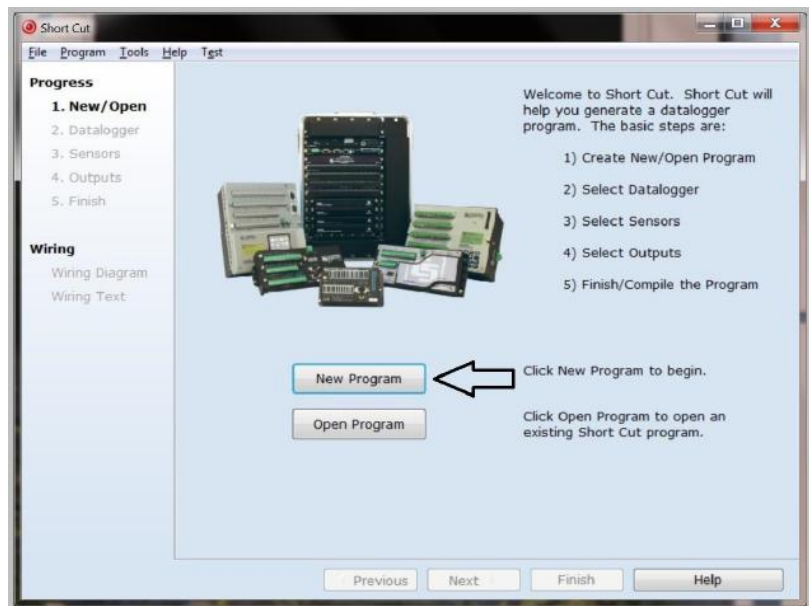
1. Install *Short Cut* by clicking on the install file icon. Get the install file from either www.campbellsci.com, the ResourceDVD, or find it in installations of *LoggerNet*, *PC200W*, *PC400*, or *RTDAQ* software.



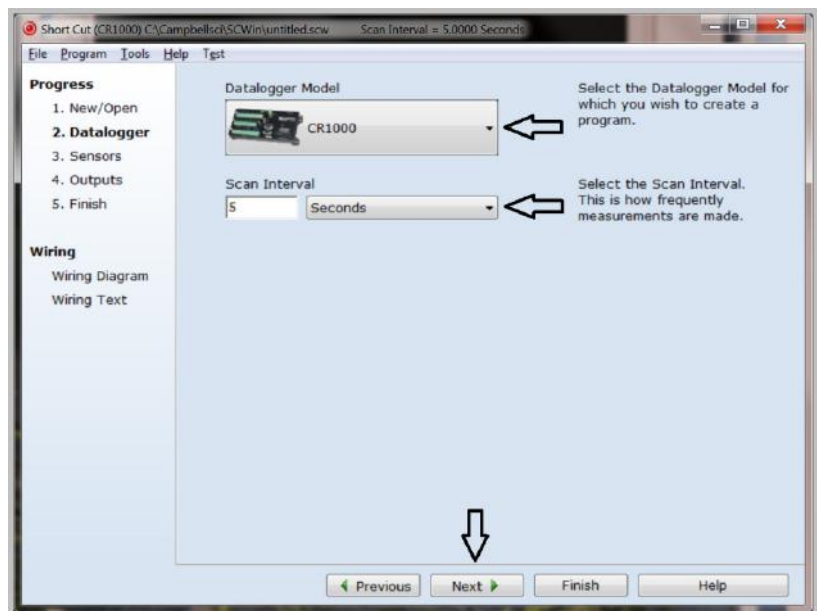
2. The *Short Cut* installation should place a *Short Cut* icon on the desktop of your computer. To open *Short Cut*, click on this icon.




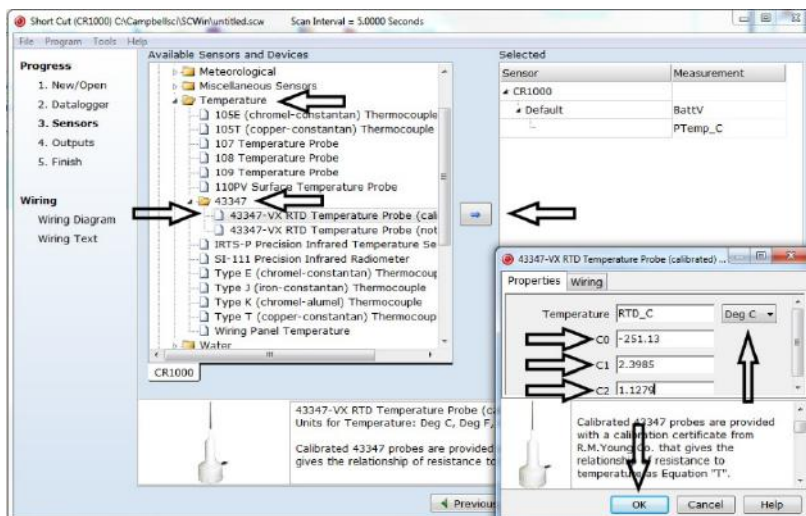
3. When *Short Cut* opens, select **New Program**.



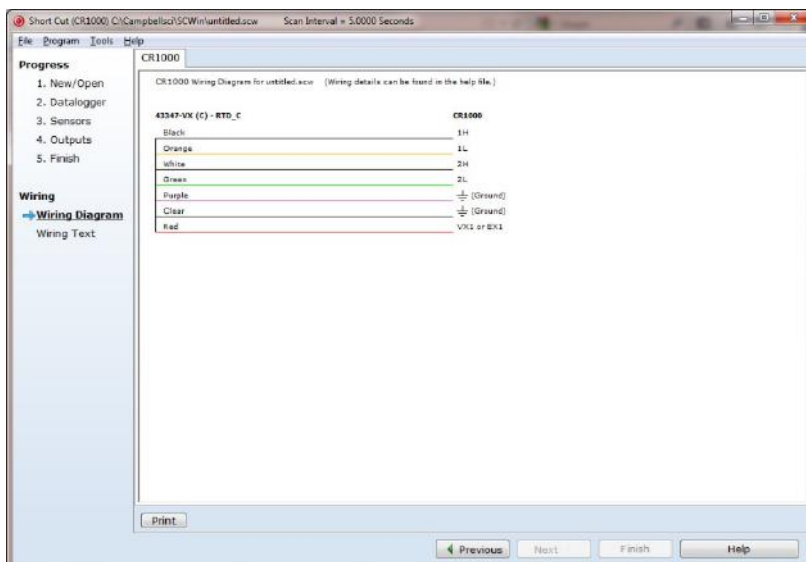
4. Select **Datalogger Model** and **Scan Interval** (default of 5 seconds is OK for most applications). Click **Next**.



5. Under the **Available Sensors and Devices** list, select **Sensors | Temperature | 43347** folder. Select **43347-VX RTD Temperature Probe (Calibrated)**. Click  to move the selection to the Selected device window. Data defaults to degrees Celsius. This can be changed by clicking the **Deg C** box and selecting **Deg F**, for degrees Fahrenheit, or **K** for Kelvin. Enter **C0**, **C1**, and **C2** values for **C0**, **C1**, and **C2** are provided the calibration certificate from R.M.Young that was shipped with the sensor. These values are unique for each sensor.



6. After selecting the sensor, click at the left of the screen on **Wiring Diagram** to see how the sensor is to be wired to the datalogger. The wiring diagram can be printed out now or after more sensors are added.



7. Select any other sensors you have, then finish the remaining *Short Cut* steps to complete the program. The remaining steps are outlined in *Short Cut Help*, which is accessed by clicking on **Help | Contents | Programming Steps**.

8. If *LoggerNet*, *PC400*, *RTDAQ*, or *PC200W* is running on your PC, and the PC to datalogger connection is active, you can click **Finish** in *Short Cut* and you will be prompted to send the program just created to the datalogger.
9. If the sensor is connected to the datalogger, as shown in the wiring diagram in step 6, check the output of the sensor in the datalogger support software data display to make sure it is making reasonable measurements.

5. Overview

The 43347 is a 1000 Ω resistance temperature device (RTD) used to measure ambient air temperature and delta or gradient air temperature. The standard 43347 probe has an uncertainty of ± 0.3 °C. For increased accuracy, the 43347 probe can be ordered with a three point calibration with an uncertainty of ± 0.1 °C.

There are two cable options for the 43347. Option –VX configures the probe as a 4-wire half bridge that requires a voltage excitation and two differential input channels, and can be used with all Campbell Scientific dataloggers except the CR200(X). Option –IX configures the probe for use with the CR6, CR3000, or CR5000 dataloggers, and requires a current excitation and one differential input channel.

The 43347 is typically housed in the 43502 motor aspirated radiation shield, but can also be housed in the 41003-5 naturally aspirated radiation shield. The 43502 radiation shield employs concentric downward facing intake tubes and a small canopy shade to isolate the temperature probe from direct and indirect radiation. The 43347 probe mounts vertically in the center of the intake tubes. A brushless 12 Vdc blower motor pulls ambient air into the shield and across the probe to reduce radiation errors.

The 43502 blower operates off a 115 Vac/12 Vdc transformer that is included with the shield, or from a user-provided 12 Vdc source. The blower has a Tachometer output that is measured with a control port or pulse counter input on the datalogger, and the output frequency stored as part of the data to insure the blower was operational.

Lead length for the 43347 and 43502 is specified when the probe/shield is ordered. Maximum cable length for the 43502 is 22.8 m (75 ft), which is based upon 22 AWG wire, 500 mA current draw, and an allowance for a 1 V voltage drop across the cable. Larger diameter wire could be used for longer cable lengths. With 18 AWG wire, the maximum length is 60.9 m (200 ft).

6. Specifications

Features:

- Uses 1000 Ω PRT for highly accurate air temperature measurements
- Well-suited for air quality applications
- 43502 fan-aspirated radiation shield reduces radiation errors for more accurate measurements
- Ideal for delta temperature measurements used in calculating atmospheric stability class
- Compatible with Campbell Scientific CRBasic dataloggers: CR6, CR800 series, CR1000, CR3000, CR5000, and CR9000(X)

6.1 43347 Rtd Temperature Probe

RM Young Model Number:	41342
Probe Tip Stainless Steel Sheath Diameter:	0.478 cm (0.188 in)
Stainless Steel Sheath Length:	6.12 cm (2.41 in)
Total Probe Tip Length (stainless steel sheath and molded plastic):	10.08 cm (3.97 in)
Overall Length:	17.8 cm (7 in)
Sensing Element:	HY-CAL 1000 Ω Platinum RTD
Temperature Range:	± 50 °C
Accuracy:	± 0.3 °C at 0 °C ± 0.1 °C with NIST calibration
Temperature Coefficient:	0.00375 $\Omega/\Omega/^{\circ}\text{C}$

6.2 43502 Aspirated Radiation Shield

Sensor Types:	Accommodates sensors up to 24 mm (0.9 in) diameter
Radiation Error Ambient Temperature: Delta T:	<0.2 °C (0.4 °F) RMS (@1000 W/m ² intensity) <0.05 °C (0.1 °F) RMS with like shields equally exposed
Aspiration Rate:	5 to 11 m/s (16 to 36 fps) depending on sensor size
Power Requirement:	12 to 14 Vdc @ 500 mA for blower
Tachometer Output:	0 to 5 Vdc square wave pulse, 2 pulses per revolution Approximately 146 Hz (4380 rpm) @ 12 Vdc
Overall Height: Diameter:	33 cm (13 in) 20 cm (8 in)
Shield Diameter: Length:	7 cm (2.7 in) 12 cm (4.7 in)

Blower Housing

Diameter:	17 cm (6.7 in)
Length:	11 cm (4.3 in)

Mounting:	V-block and U-bolt fits vertical pipe with 25 to 50 mm (1.0 to 2.0 in) outer diameter
------------------	---

6.3 41003-5 Radiation Shield

Sensor Types:	Accommodates temperature and humidity sensors up to 26 mm (1 in) diameter
----------------------	---

Radiation Error:	@1080 W/m ² intensity – Dependent on wind speed 0.4 °C (0.7 °F) RMS @ 3 m/s (6.7 mph) 0.7 °C (1.3 °F) RMS @ 2 m/s (4.5 mph) 1.5 °C (2.7 °F) RMS @ 1 m/s (2.2 mph)
-------------------------	---

Construction:	UV stabilized white thermoplastic plates Aluminum mounting bracket, white powder coated Stainless steel U-bolt clamp
----------------------	--

Diameter:	13 cm (5.1 in)
------------------	----------------

Height:	26 cm (10.2 in)
----------------	-----------------

Mounting:	Fits vertical pipe with 25 to 50 mm (1 to 2 in) outer diameter
------------------	--

Weight

Net Weight:	0.7 kg (1.5 lb)
Shipping Weight:	1.4 kg (3 lb)

7. Installation

If you are programming your datalogger with *Short Cut*, skip Section 7.4.1, 43347 Sensor Wiring (p. 16), and Section 7.5, Datalogger Programming (p. 20). *Short Cut* does this work for you. See Section 4, QuickStart (p. 1), for a *Short Cut* tutorial. *Short Cut* only supports the –VX option and not the –IX option.

7.1 Siting

Sensors should be located over an open level area at least 9 m (EPA) in diameter. The surface should be covered by short grass, or where grass does not grow, the natural earth surface. Sensors should be located at a distance of at least four times the height of any nearby obstruction, and at least 30 m (EPA) from large paved areas. Sensors should be protected from thermal radiation, and adequately ventilated.

Standard measurement heights:

- 1.5 m ±1.0 m (AASC)
- 1.25 to 2.0 m (WMO)
- 2.0 m (EPA)
- 2.0 m and 10.0 m temperature difference (EPA)

7.2 Required Tools

- 1/2-inch open-end wrench
- small screw driver provided with datalogger
- small Phillips screw driver
- UV resistant cable ties
- small pair of diagonal-cutting pliers

7.3 Radiation Shield Installation

The 43347 is typically housed in the 43502 motor aspirated radiation shield, but can also be housed in the 41003-5 naturally aspirated radiation shield. These radiation shields are configured for attaching the shield to a vertical tripod mast or tower leg. By moving the U-bolt to the other set of holes the radiation shields can be attached to a CM200-series crossarm. The crossarm includes a CM210 Mounting Kit for attaching the crossarm to a tripod mast or tower leg. For triangular towers such as the UT30, an additional CM210 Crossarm Mounting Kit can be ordered for attaching the crossarm to two tower legs, increasing the stability.

7.3.1 43502 Radiation Shield Mounting

Appendix C, *43502 Aspirated Radiation Shield (p. C-1)*, provides names and locations of shield components and position of sensor within the shield.

1. Loosen the captive screw in the blower cover (see FIGURE 7-1).



FIGURE 7-1. 43502 Radiation Shield mounted to tripod mast

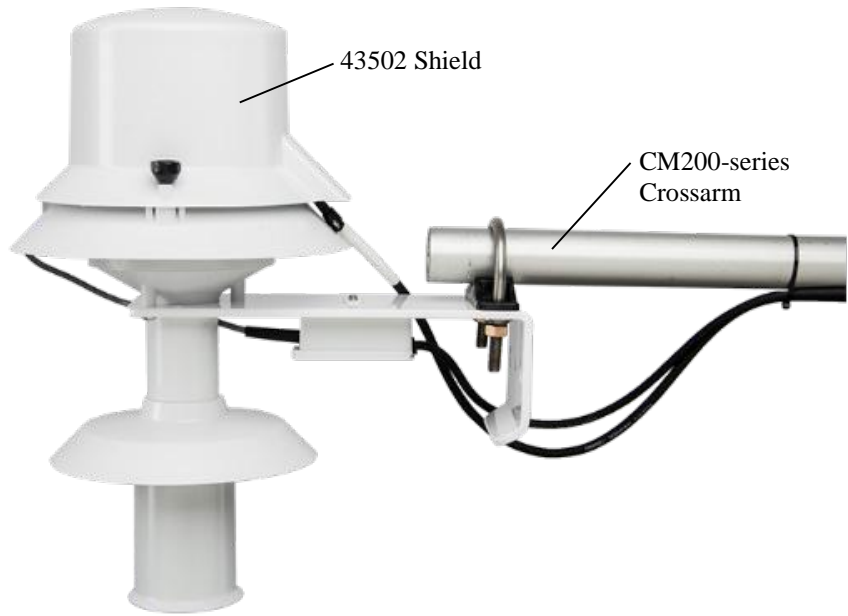


FIGURE 7-2. 43502 Radiation Shield mounted to a CM200-series Crossarm

2. Open the blower cover, which is hinged to allow easy access for sensor installation and cable connections.
3. Insert the 43347 probe inside the 43502 shield using the sensor mounting bushing (supplied with the 43502) as shown in [FIGURE 7-3](#).
4. Route the sensor cable through the notch in the blower's housing. The black grommet provides a seal ([FIGURE 7-3](#) and [FIGURE 7-4](#)).
5. Clamp the sensor cable using the sensor cable clamp to keep it in proper position when the cover is closed ([FIGURE 7-4](#)).

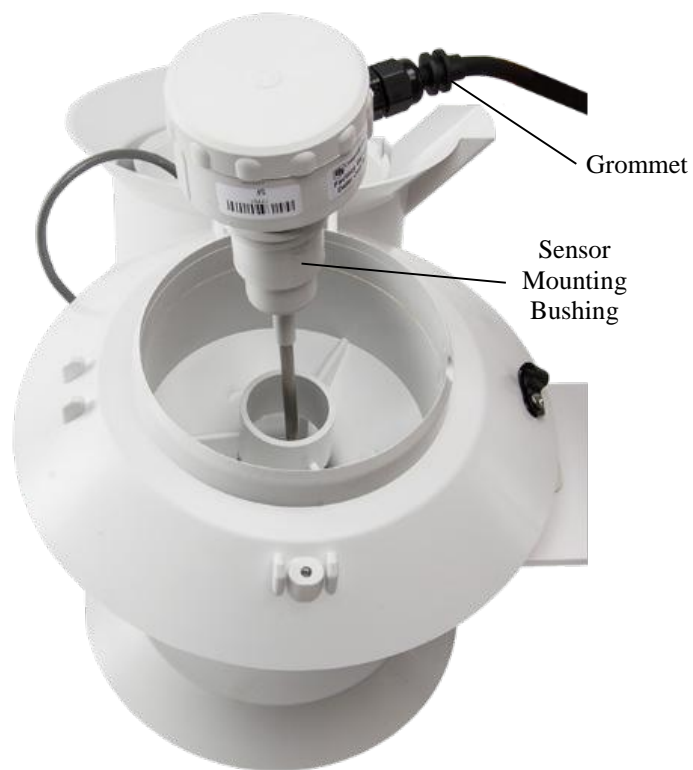


FIGURE 7-3. 43347 probe and bushing



FIGURE 7-4. 43347 probe mounted inside the 43502 shield

6. Turn the sensor over to access the fan power terminal box. Remove the screw holding the lid in place and slide the lid towards the shield as shown in FIGURE 7-5.



FIGURE 7-5. 43502 shield terminals

7. Remove the grommet from the edge of the box and slide it over the power cable. Push it down around 8 to 10 cm (3 to 4 in) past the end of the outer jacket.
8. Remove the screw holding the cable clamp in place and slide the clamp over the cable just past the end of the outer jacket.
9. The terminal blocks are labeled on the printed circuit board. Connect the wires as follows.

Terminal Block Lettering	Wire Color
TACH	White
POS	Red
NEG	Black

10. Gently bend the wires and cable and screw down the cable clamp as shown in FIGURE 7-6.

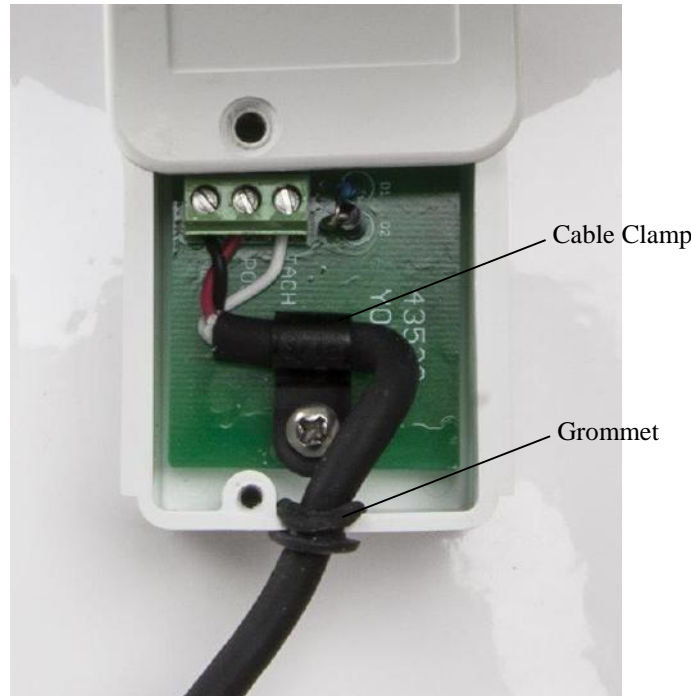


FIGURE 7-6. Closeup of terminal box

11. Slide the grommet into place and push it down into the mating notch on the edge of the box. Slide the lid back into place. Screw the lid back into place. The lid will squeeze down on the grommet.

CAUTION

Be sure to observe correct polarity. Red is positive; black is negative.

CAUTION

The blower motor draws approximately 420 mA to 480 mA. Use sufficiently heavy gauge wire between the power supply adapter and the blower motor terminals to avoid significant voltage drop.

12. Clamp the blower power cable with the power cable clamp provided at the edge of the printed circuit card (FIGURE 7-6).
13. Plug the ac adapter into the junction box or ac outlet, and use cable ties to secure the power cable to the mounting structure.

CAUTION

Ensure that there is a sufficient loop in the power cable to allow the blower cover to be opened and closed easily.

14. Route the sensor cable to the instrument enclosure and secure the cable to the tripod/tower using cable ties.
15. Close the blower cover and tighten the captive screw.

7.3.2 41003-5 Radiation Shield Mounting

1. Attach the 41003-5 to the tripod/tower or crossarm using its U-bolt. Tighten the nuts on the U-bolt sufficiently for a secure hold (see [FIGURE 7-7](#) and [FIGURE 7-8](#)).
2. Loosen the 27251 split-nut on the bottom plate of the 41003-5, and insert the 43347 into the shield. Tighten the split-nut to secure the sensor in the shield.
3. Route the sensor cable to the instrument enclosure. Secure the cable to the tripod/tower using cable ties.

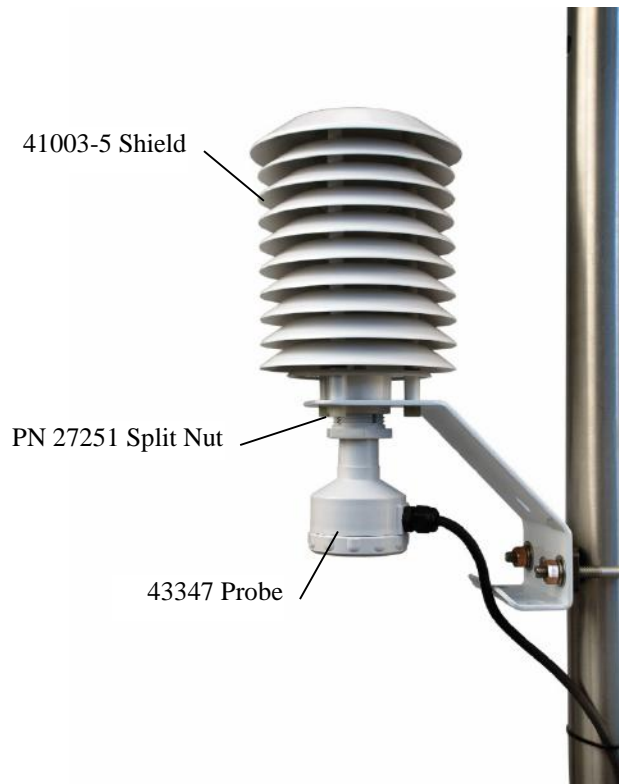


FIGURE 7-7. 41003-5 Radiation Shield mounted to tripod mast

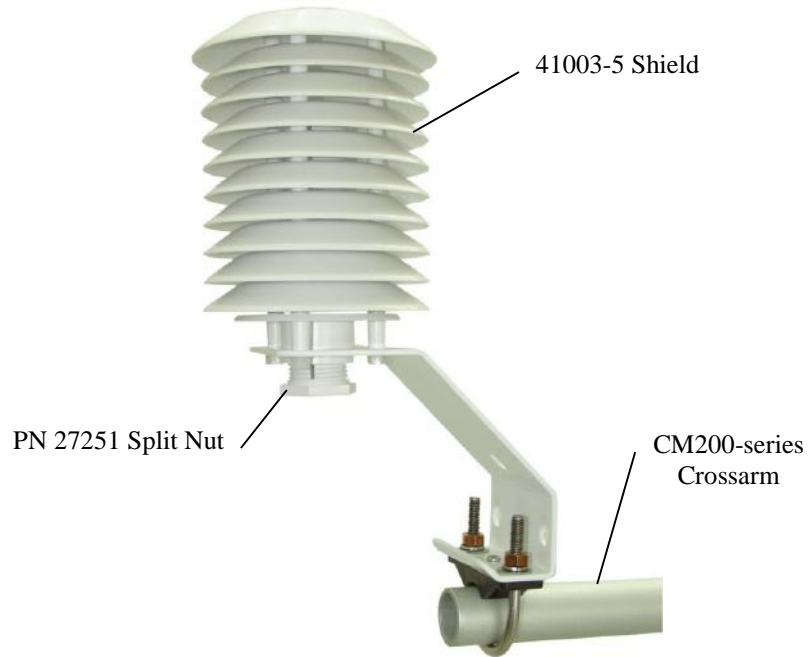


FIGURE 7-8. 41003-5 Radiation Shield mounted to a CM200-series Crossarm

7.4 Wiring

To wire an Edlog datalogger, see an older manual at www.campbellsci.com/old-manuals, or contact Campbell Scientific for assistance.

7.4.1 43347 Sensor Wiring

The 43347 has two wiring configuration options—the VX option and the IX version. The VX option can connect directly to most of our dataloggers using a voltage excitation port. The IX option can directly connect to dataloggers that have a current excitation port (CR6, CR3000, CR5000).

43347 probes with the –VX option are wired to the datalogger as described in Section 7.4.1.1, –VX Wiring (p. 17). 43347 probes with the –IX option are wired to the CR6, CR3000 or CR5000 dataloggers as described in Section 7.4.1.2, –IX Wiring (p. 18).

NOTE

Occasionally, a customer may need to connect an IX version of the sensor to a datalogger that has voltage excitation only (e.g., CR800, CR1000). The customer can do this by using a 4WPB1K terminal input module (refer to the 4WPB1K manual for more information).

7.4.1.1 –VX Wiring

The 43347-VX probe is configured as a four wire half bridge as shown in FIGURE 7-9. Each probe requires two differential inputs and one voltage excitation channel (one excitation channel can be used for two probes). The black and orange wires connect to the first of two contiguous input channels. For example, if channels 1 and 2 are used, the black and orange wires connect to 1H and 1L respectively, and the white and green wires connect to 2H and 2L respectively.

Connections to Campbell Scientific dataloggers are given in TABLE 7-1. When *Short Cut* software is used to create the datalogger program, wire the sensor to the channels shown on the wiring diagram created by *Short Cut*.

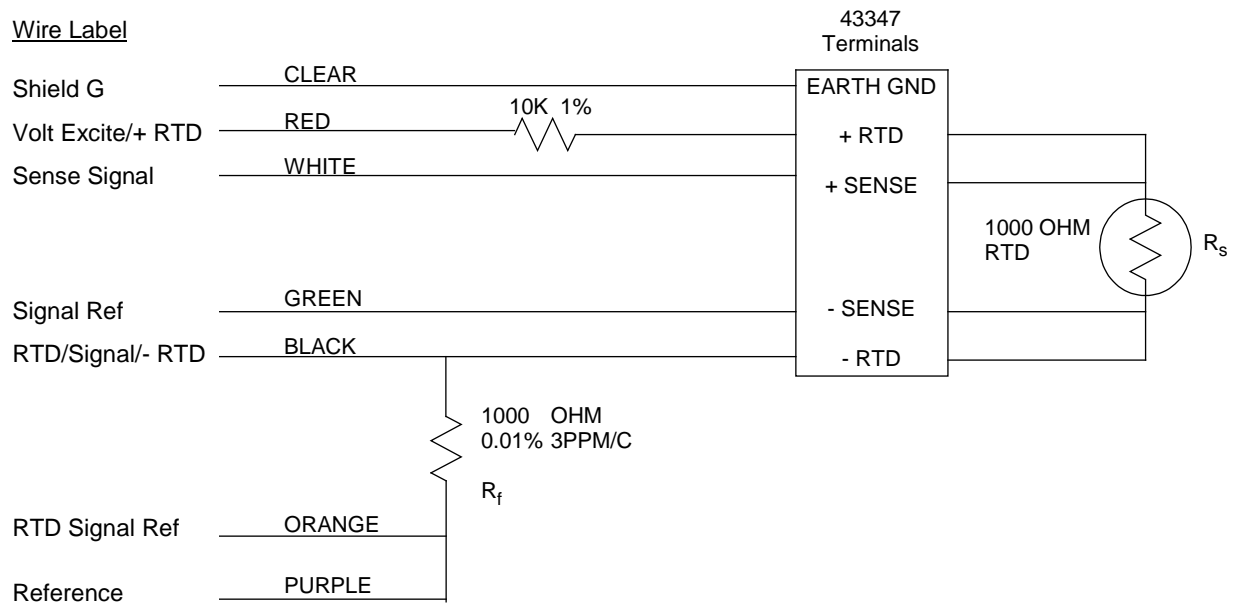


FIGURE 7-9. 43347-VX Temperature Probe wiring

TABLE 7-1. Datalogger Connections for –VX option		
Color	Wire Label	Datalogger
Red	Volt Excite/+ RTD	Switched Excitation
White	Sense Signal	Differential (high)
Green	Sense Signal Ref	Differential (low)
Black	RTD Signal/– RTD	Differential (high)
Orange	RTD Signal Ref	Differential (low)
Purple	Excitation Reference	⊥
Clear	Shield G	⊥

7.4.1.2 –IX Wiring

The 43347-IX probe is configured as shown in FIGURE 7-10. Connections to the CR6, CR3000, and CR5000 dataloggers are shown in TABLE 7-2.

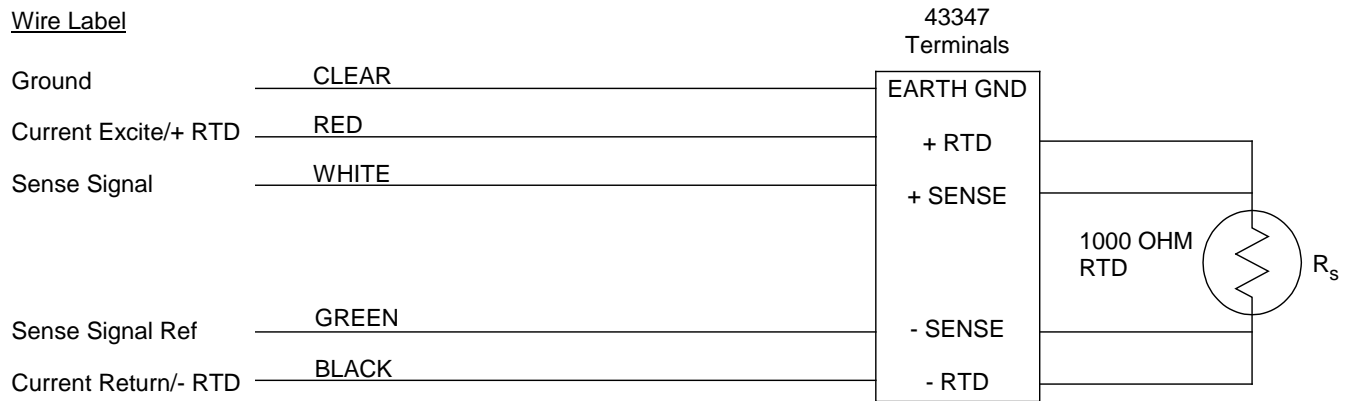


FIGURE 7-10. 43347-IX Temperature Probe schematic

TABLE 7-2. Datalogger Connections for –IX Option		
Color	Wire Label	CR6, CR3000, CR5000
Red	Current Excite/+ RTD	Switched Current Excitation
White	Sense Signal	Differential (high)
Green	Sense Signal Ref	Differential (low)
Black	Current Return/– RTD	Switched Current Excitation Return
Clear	Ground	Ground (\perp)

7.4.2 43502 Aspirated Radiation Shield Wiring

The shield includes a 115 Vac/12 Vdc transformer. In most applications AC power is run to the tower or tripod and terminated in a junction box that is large enough to house the transformer(s) as shown in FIGURE 7-11.

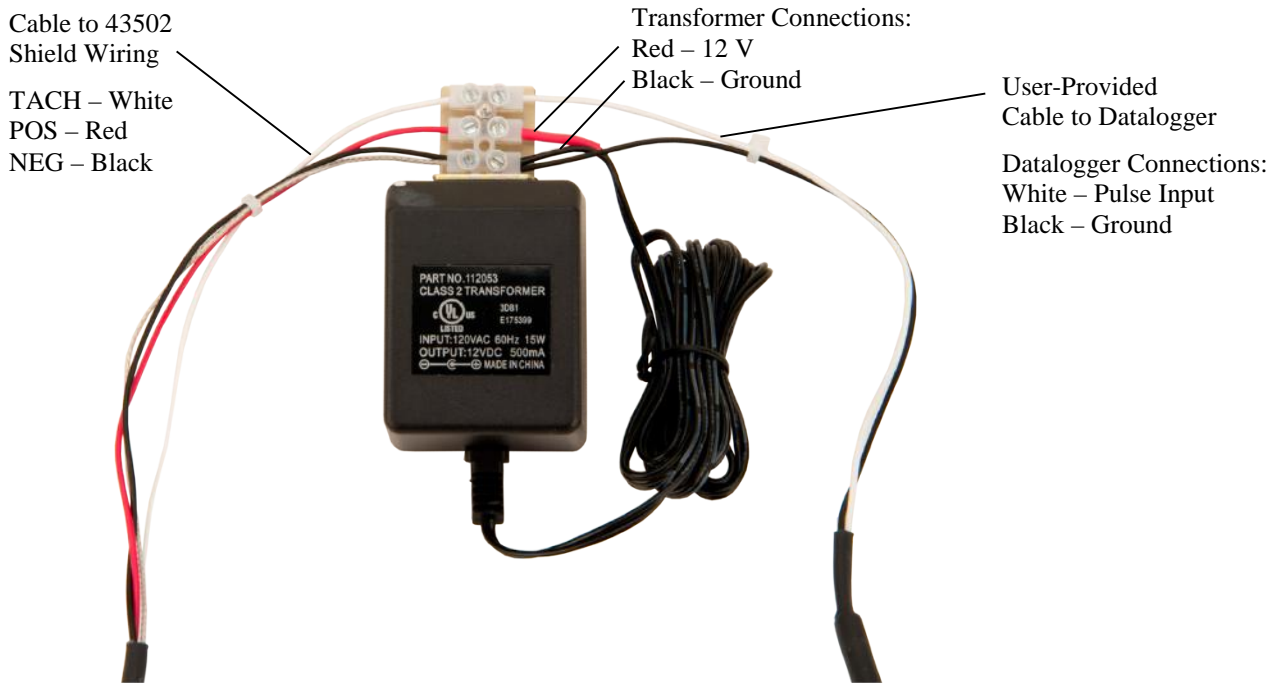


FIGURE 7-11. 43502 Aspirated Shield wiring

TABLE 7-3. 43502 Blower/Tachometer Connections			
Color	43502	115 Vac/12 Vdc Transformer	Datalogger ¹
Red	POS	terminal/wire with red heat shrink	
Black	NEG	terminal/wire without heat shrink	G
White	TACH	spare terminal	Control Port/ Pulse
Clear	No Connect	terminal/wire without heat shrink	⏏
¹ using Campbell Scientific pn CABLE2CBL-L, or user-provided 2-conductor shielded cable			

7.5 Datalogger Programming

Short Cut can be used to program a 43347 with the –VX option but not the –IX option. *Short Cut* is the best source for up-to-date datalogger programming code. Programming code is needed,

- when creating a program for a new datalogger installation
- when adding sensors to an existing datalogger program

If measuring the 43347-VX and your data acquisition requirements are simple, you can probably create and maintain a datalogger program exclusively with *Short Cut*. If your data acquisition needs are more complex, the files that *Short Cut* creates are a great source for programming code to start a new program or add to an existing custom program.

NOTE

Short Cut cannot edit programs after they are imported and edited in *CRBasic Editor*.

A *Short Cut* tutorial is available in Section 4, *QuickStart* (p. 1). If you wish to import *Short Cut* code into *CRBasic Editor* to create or add to a customized program, follow the procedure in Appendix A, *Importing Short Cut Code Into CRBasic Editor* (p. A-1).

Programming basics for CRBasic dataloggers are provided in the following sections. Complete program examples for select dataloggers can be found in Appendix B, *Example Programs* (p. B-1).

7.5.1 Program Structure

TABLE 7-4 shows the instructions used a 43347 CRBasic program.

TABLE 7-4. CRBasic Instructions Used to measure the 43347				
Function	Calibrated 43347-VX	Uncalibrated 43347-VX	Calibrated 43347-IX	Uncalibrated 43347-IX
Measure Sensor	BRHalf4W (Section 7.5.2, <i>BRHalf4W()</i> CRBasic Instruction (p. 21))		Resistance (see Section 7.5.3, <i>Resistance()</i> CRBasic Instruction (p. 21))	
Convert to temperature	Mathematical expression (Section 7.5.4, <i>Calibration Equation</i> (p. 21))	PRT (Section 7.5.5, <i>PRT()</i> CRBasic Instruction (p. 22))	Mathematical expression (Section 7.5.4, <i>Calibration Equation</i> (p. 21))	PRT (Section 7.5.5, <i>PRT()</i> CRBasic Instruction (p. 22))
43502 TACH (optional)	PulseCount (Section 7.5.6, <i>Pulse()</i> CRBasic Instruction (p. 22))			

7.5.2 BRHalf4W() CRBasic Instruction

The –VX option specifies that the probe/cable is configured for a 4-wire half bridge measurement using an excitation voltage. With this configuration, the **BRHalf4W()** CRBasic instruction is used to measure the sensor. The measurement applies an excitation voltage and makes two differential voltage measurements. The first measurement is made across the fixed resistor (Rf), the second is made across the RTD (Rs). The result is the ratio of the two resistances (Rs/Rf), which is not affected by lead length.

The result needs to be converted to temperature. The method used to do this depends on whether the probe is calibrated or uncalibrated. For calibrated probes, see Section 7.5.4, *Calibration Equation* (p. 21). For uncalibrated probes, see Section 7.5.5, *PRT() CRBasic Instruction* (p. 22).

The **BRHalf4W()** instruction has the following form:

```
BrHalf4W(Dest, Reps, Range1, Range2, DiffChan, ExChan, MeasPEx,
          ExmV, RevEx, RevDiff, SettlingTime, Integ, Mult, Offset)
```

Variations:

- Set *Mult* to 1000 if measuring a calibrated sensor.
- Set *Mult* to 1.0 if measuring an uncalibrated sensor

7.5.3 Resistance() CRBasic Instruction

CRBasic dataloggers compatible with the –IX option are the CR6, CR3000, and CR5000. The 43347-IX is measured with the **Resistance()** instruction. This CRBasic instruction applies a switched current excitation and measures the voltage across the 1000 Ω RTD. The *result*, with a *multiplier* of 1 and an *offset* of 0, is the RTD resistance in ohms.

The result needs to be converted from ohms to temperature. The method used to do this depends on whether the probe is calibrated or uncalibrated. For calibrated probes, see Section 7.5.4, *Calibration Equation* (p. 21). For uncalibrated probes, see Section 7.5.5, *PRT() CRBasic Instruction* (p. 22).

The **Resistance()** instruction with its parameters is listed below:

```
Resistance(Dest, Reps, Range, DiffChan, IexChan, MeasPEx, EXuA,
           RevEx, RevDiff, SettlingTime, Integ, Mult, Offset)
```

Details on determining the excitation current and other parameter options are described in Section 8.1, *Resistance Measurement Instruction Details* (p. 22).

7.5.4 Calibration Equation

For calibrated 43347 probes, a mathematical equation is used to convert the result to temperature. The mathematical equation is provided with the R.M. Young Co. calibration certificate that is included with each calibrated probe. This certificate gives the relationship of resistance to temperature (°C). The equation will be in the form of:

$$T = C_0 + R \cdot C_1 + R^2 \cdot C_2$$

T is the temperature in degrees Celsius.

The values for C₀, C₁, and C₂ are unique for each sensor.

When using the **BRHalf4W()** instruction, R is the measured result if *Mult* is set to 1000 and *Offset* is set to 0.0. When using the **Resistance()** instruction, R is the measured result if *Mult* is set to 1.0 and *Offset* is set to 0.0.

7.5.5 PRT() CRBasic Instruction

For uncalibrated probes, the **PRT()** instruction is used to convert the ratio R_s/R₀ to temperature in accordance with DIN Standard 43760, where R_s is the measured resistance of the RTD, and R₀ is the resistance of the RTD at 0 degrees Celsius (1000 Ω). Because the alpha of the 43347 is 0.00375 and the alpha of DIN standard is 0.00385, a *multiplier* of 1.0267 (0.00385/0.00375) is required in the **PRT()** instruction.

The **PRT()** instruction with its parameters is listed below:

PRT(Dest, Reps, Source, Mult, Offset)

7.5.6 Pulse() CRBasic Instruction

The **Pulse()** CRBasic instruction can be used to measure and store the tachometer output frequency (Hz) of the 43502 aspirated radiation shield. Storing the output frequency is a way to insure the blower is operational.

The **PulseCount()** instruction with its parameters is listed below:

PulseCount(Dest, Reps, PChan, PConfig, POption, Mult, Offset)

For the *PConfig* parameter, use high frequency.

See Appendix B, *Example Programs (p. B-1)*, for more information.

8. Operation

8.1 Resistance Measurement Instruction Details

The **Resistance()** instruction applies a switched current excitation to the 43347 probe, and makes two differential voltage measurements. The first differential voltage measurement is made across the RTD; the second is made across a precision 1000 Ω resistor in the datalogger's current excitation circuitry. The measurement result (X) = V_s/I_x = RTD resistance in ohms, where V_s is the measured voltage and I_x is the excitation current.

The maximum excitation current is ±2.5 mA. The parameters for the excitation current, measurement range, differential channel, and options to reverse the excitation current and switch the differential inputs are configurable, as discussed in the following sections.

When relatively large resistances are measured (> 1000 ohms), or relatively long cable lengths are used (> 50 feet) with sensors requiring current excitation, a 0.1 µf capacitor should be placed between the IX and IXR to prevent excessive ringing. The capacitor serves a feed-forward function. With this capacitor present, a minimum of 3 ms is recommended for the *Settling*

Time parameter in the measurement instruction. The capacitor simply connects between the IX terminal and the IXR terminal. The capacitor has no polarity. Campbell Scientific offers a 0.1 μf capacitor, pn 10721.

8.1.1 Determining the Excitation Current

Current passing through the RTD causes heating within the RTD (referred to as self-heating) resulting in a measurement error. To minimize self-heating errors, use the minimum current that will still give the desired resolution. The best resolution is obtained when the excitation is large enough to cause the signal voltage to fill the measurement range.

The following example determines an excitation current that keeps self-heating effects below 0.002 °C in still air.

Self heating can be expressed as

$$\Delta T = (I_x^2 R_{\text{RTD}}) \theta$$

Where: ΔT = self-heating in °C

I_x = current excitation

R_{RTD} = 1000 Ω RTD resistance

θ = 0.05°C/mW self-heating coefficient

Solving the above equation for I_x :

$$I_x = (\Delta T / R_{\text{RTD}} \theta)^{1/2}$$

To keep self-heating errors below 0.002 °C, the maximum current I_x is:

$$I_x = (.002 \text{ °C} / (1000 \Omega \cdot .05 \text{ °C} / .001\text{W}))^{1/2}$$

$$I_x = 200 \mu\text{A}$$

The best resolution is obtained when the excitation is large enough to cause the signal voltage to fill the measurement full scale range (the possible ranges are ± 5000 , 1000, 200, 50 and 20 mV).

The maximum voltage would be at the high temperature or highest resistance of the RTD. At +40°C, a 1000 Ω RTD with $\alpha = 3.75 \text{ } \Omega/\text{°C}$ is about 1150 Ω .

Using Ω 's law to determine the voltage across the RTD at 40°C.

$$V = I_x R$$

Using an I_x value of 200 μA , the voltage is:

$$V = 200 \mu\text{A} \cdot 1150 \Omega$$

$$V = 230 \text{ mV}$$

This is just over the ± 200 mV input voltage range of the CR3000. For a maximum voltage of 200 mV, the current I_x is:

$$I_x = 200 \text{ mV} / 1150 \Omega$$

$$I_x \sim 170 \mu\text{A}$$

8.1.2 Reducing Measurement Noise

AC power lines, pumps, and motors can be the source of electrical noise. If the 43347 probe or datalogger is located in an electrically noisy environment, the measurement should be made with the 60 or 50 Hz rejection options.

Offsets in the measurement circuitry may be reduced by reversing the current excitation (*RevEx*), and reversing the differential analog inputs (*RevDiff*), as shown in the program examples in Appendix B.2, *43347-IX Programs (p. B-3)*.

9. Troubleshooting and Maintenance

NOTE

All factory repairs and recalibrations require a returned material authorization (RMA) and completion of the “Declaration of Hazardous Material and Decontamination” form. Refer to the [Assistance](#) page at the beginning of this manual for more information.

9.1 Maintenance

Inspect and clean the shield and probe periodically to maintain optimum performance. When the shield becomes coated with a film of dirt, wash it with mild soap and warm water. Use alcohol to remove oil film. Do not use any other solvent. Check mounting bolts periodically for possible loosening due to tower vibration.

9.2 Troubleshooting

-99999, NAN displayed in input location:

Make sure the temperature probe is connected to the correct input channels (see Section 7.5, *Datalogger Programming (p. 20)*). The input channel refers to the channel that the black and orange wires are connected to. The white and green wires connect to the next (higher) contiguous channel.

Unreasonable value displayed in variable:

Make sure the multiplier and offset values for the CRBasic instructions are correct (see Section 7.5, *Datalogger Programming (p. 20)*). For calibrated temperature probes (Section 7.5.4, *Calibration Equation (p. 21)*), make sure the coefficients have been properly scaled and entered. For uncalibrated temperature probes, make sure the multiplier and offset values have been properly entered (Section 7.5.5, *PRT() CRBasic Instruction (p. 22)*).

Temperature reading too high:

Make sure the blower is working properly and there are no obstructions to the air flow in the sensor shield, telescoping arm, or vent holes. Also, check that the probe end of the shield points toward the prevailing wind.

9.3 43347 Probe Calibration

Calibration should be checked every 12 months. Probes used to measure a temperature gradient should be checked with respect to absolute temperature, and with respect to zero temperature difference. An excellent discussion on calibration procedures can be found in the Quality Assurance Handbook for Air Pollution Measurement Systems, Volume IV Meteorological Measurements¹.

10. Attributes and References

Refer to the RM Young 43502 Instruction Manual for additional information such as replacement parts, assembly drawings, and electrical schematics.

¹EPA, (1989). *Quality Assurance Handbook for Air Pollution Measurement Systems Volume IV - Meteorological Measurements*, EPA Office of Research and Development, Research Triangle Park, North Carolina 27711.

Appendix A. Importing Short Cut Code Into CRBasic Editor

This tutorial shows:

- How to import a *Short Cut* program into a program editor for additional refinement
- How to import a wiring diagram from *Short Cut* into the comments of a custom program

Short Cut creates the following files, which can be imported into *CRBasic Editor*. Assuming defaults were used when *Short Cut* was installed, these files reside in the C:\campbellsci\SCWin folder:

- .DEF (wiring and memory usage information)
- .CR6 (CR6 datalogger code)
- .CR1 (CR1000 datalogger code)
- .CR8 (CR800 datalogger code)
- .CR3 (CR3000 datalogger code)
- .CR5 (CR5000 datalogger code)
- .CR9 (CR9000(X) datalogger code)

Use the following procedure to import *Short Cut* code and wiring diagram into *CRBasic Editor*.

1. Create the *Short Cut* program following the procedure in Section 4, *QuickStart* (p. 1). Finish the program and exit *Short Cut*. Make note of the file name used when saving the *Short Cut* program.
2. Open *CRBasic Editor*.
3. Click **File | Open**. Assuming the default paths were used when *Short Cut* was installed, navigate to C:\CampbellSci\SCWin folder. The file of interest has the .CR6, .CR1, .CR8, .CR3, .CR5, or .CR9 extension. Select the file and click **Open**.
4. Immediately save the file in a folder different from C:\Campbellsci\SCWin, or save the file with a different file name.

NOTE

Once the file is edited with *CRBasic Editor*, *Short Cut* can no longer be used to edit the datalogger program. Change the name of the program file or move it, or *Short Cut* may overwrite it next time it is used.

5. The program can now be edited, saved, and sent to the datalogger.
6. Import wiring information to the program by opening the associated .DEF file. Copy and paste the section beginning with heading “-Wiring for CRXXX-” into the CRBasic program, usually at the head of the file. After pasting, edit the information such that an apostrophe (') begins each line. This character instructs the datalogger compiler to ignore the line when compiling.

Appendix B. Example Programs

B.1 43347-VX Programs

B.1.1 CR1000 Example for Calibrated 43347-VX Probes

TABLE B-1 shows the sensor wiring for this example.

TABLE B-1. Wiring for Measurement Examples		
Color	Function	CR1000
Clear	Shield	\perp
Red	Switched Excitation	E1
White	Differential High	2H
Green	Differential Low	2L
Black	Differential High	1H
Orange	Differential Low	1L
Purple	Analog Reference	\perp
43502 Shield		
White	Tachometer	C1
Red	12V Power ¹	
Black	Ground	
¹ wired to the 115 Vac/12 Vdc transformer supplied with the 43502, or separate 12 Vdc supply		

Because the calibration coefficients are to convert sensor resistance (Rs) to temperature, the **BrHalf4W()** measurement result (Rs/Rf) must be multiplied by 1000 (Rf), before the coefficients are applied. To do this, the **BrHalf4W** uses *1000* for the *Mult* parameter.

This program includes an instruction to measure and store the tachometer output frequency (Hz) of the 43502 aspirated radiation shield. Storing the output frequency is a way to insure the blower is operational.

CRBasic Example B-1. CR1000 Example for Calibrated 43347-VX Probes

```
'CR1000

'Declare Variables and Units
Public RTD_Res
Public RTD_Cal_C
Units RTD_Cal_C = Deg C
Public Tach_Hz
Units Tach_Hz = Hz

'Define Data Tables
DataTable(Table1,True,-1)
  DataInterval(0,60,Min,10)
  Average(1,RTD_Cal_C,FP2,False)
  Sample (1,Tach_Hz,FP2)
EndTable

'Main Program
BeginProg
  Scan(5,Sec,1,0)

  'Measure 43347 (calibrated) probe and convert Rs/Rf to Rs
  BrHalf4W(RTD_Res,1,mV250,mV250,1,1,1,2500,True,True,0,_60Hz,1000,0)

  'Apply calibration coefficients (probe specific)
  '43347 calibration  $T = -250.052585 + (R * 2.375187e-1) + (R^2 * 1.258482e-5)$ 
  RTD_Cal_C = -250.052585 + ((RTD_Res)*2.375187e-1) + ((RTD_Res^2)* 1.258482e-5)

  'Measure the 43502 tachometer output
  PulseCount (Tach_Hz,1,11,0,1,1.0,0)

  'Call Data Tables and Store Data
  CallTable(Table1)
NextScan
EndProg
```

B.1.2 CR1000 Example for Uncalibrated 43347-VX Probes

TABLE B-2 shows the sensor wiring for this example.

TABLE B-2. Wiring for Measurement Examples		
Color	Function	CR1000
Clear	Shield	\perp
Red	Switched Excitation	E1
White	Differential High	2H
Green	Differential Low	2L
Black	Differential High	1H
Orange	Differential Low	1L
Purple	Analog Reference	\perp

CRBasic Example B-2. CR1000 Example for Uncalibrated 43347-VX Probes

```

'CR1000

'Declare Variables
Public RTD_C

'Define Data Tables
DataTable(One_Hour,True,-1)
  DataInterval(0,60,Min,0)
  Sample(1,RTD_C,IEEE4)
EndTable

'Main Program
BeginProg
  Scan(1,Sec,1,0)
    '43347 RTD Temperature Probe (not calibrated) measurement RTD_C:
    BrHalf4W(RTD_C,1,mV250,mV250,1,Vx1,1,2500,True,True,0,_60Hz,1,0)
    PRT(RTD_C,1,RTD_C,1.0267,0)
    'Call Data Tables and Store Data
    CallTable(One_Hour)
  NextScan
EndProg

```

B.2 43347-IX Programs

TABLE B-3 shows the sensor wiring for Appendix B.2.1, *CR3000 Example for Calibrated 43347-IX Probe (p. B-4)*, and Appendix B.2.2, *CR3000 Example for Uncalibrated 43347-IX Probe (p. B-4)*.

These programs include an instruction to measure and store the tachometer output frequency (Hz) of the 43502 aspirated radiation shield. Storing the output frequency is a way to insure the blower is operational.

TABLE B-3. Wiring for Measurement Examples

Color	Function	CR3000
Red	Switched Current Excitation	IX1
White	Differential High	1H
Green	Differential Low	1L
Black	Excitation Return	IXR
Clear	Shield	⊥
43502 Shield		
White	Tachometer	
Red	12V power ¹	
Black	Ground ¹	
¹ wired to the 115 Vac/12 Vdc transformer supplied with the 43502, or separate 12 Vdc supply		

B.2.1 CR3000 Example for Calibrated 43347-IX Probe

The following example program measures a calibrated 43347-IX probe every 1 second and stores a 15 minute average temperature in degrees Celsius.

CRBasic Example B-3. CR3000 Example for Calibrated 43347-IX Probe
<pre> 'CR3000 'Declare Variables and Units Public RTD_Res Public RTD_Cal_C Public Tach_Hz Units Tach_Hz = Hz 'Define Data Tables DataTable(PRT_Data,1,1000) DataInterval(0,15,Min,1) Average (1,RTD_Cal_C,IEEE4,False) Sample (1,Tach_Hz,FP2) Endtable 'Main Program BeginProg Scan(1,Sec,10,0) 'Measure the 43347-IX probe Resistance (RTD_Res,1,mV200,1,Ix1,1,170,True,True,0,_60Hz,1,0) 'Convert RTD resistance to temperature '43347 calibration $T = -250.052585 + (R * 2.375187e-1) + (R^2 * 1.258482e-5)$ RTD_Cal_C = -250.052585 + ((RTD_Res) * 2.375187e-1) + ((RTD_Res^2) * 1.258482e-5) 'Measure the 43502 tachometer output PulseCount (Tach_Hz,1,11,0,1,1.0,0) CallTable PRT_Data NextScan EndProg </pre>

B.2.2 CR3000 Example for Uncalibrated 43347-IX Probe

The following example program measures an uncalibrated 43347-IX probe every 1 second and stores a 15 minute average temperature in degrees Celsius.

CRBasic Example B-4. CR3000 Example for Uncalibrated 43347-IX Probe
<pre> 'CR3000 'Declare Variables and Units Public RTD_Res Public RTD_RsRo Public RTD_C Public Tach_Hz Units Tach_Hz = Hz Const RTD_Ro = 1000.00 'This is the actual RTD resistance for this sensor at 0.0°C 'Define Data Tables DataTable(PRT_Data,1,1000) DataInterval(0,10,Min,1) Average (1,RTD_C,IEEE4,False) </pre>

```
Sample (1,Tach_Hz,FP2)
Endtable

'Main Program
BeginProg
Scan(3,Sec,10,0)

'Measure the 43347-IX Probe
Resistance (RTD_Res,1,mV200,1,Ix1,1,170,True,True,0,_60Hz,1,0)

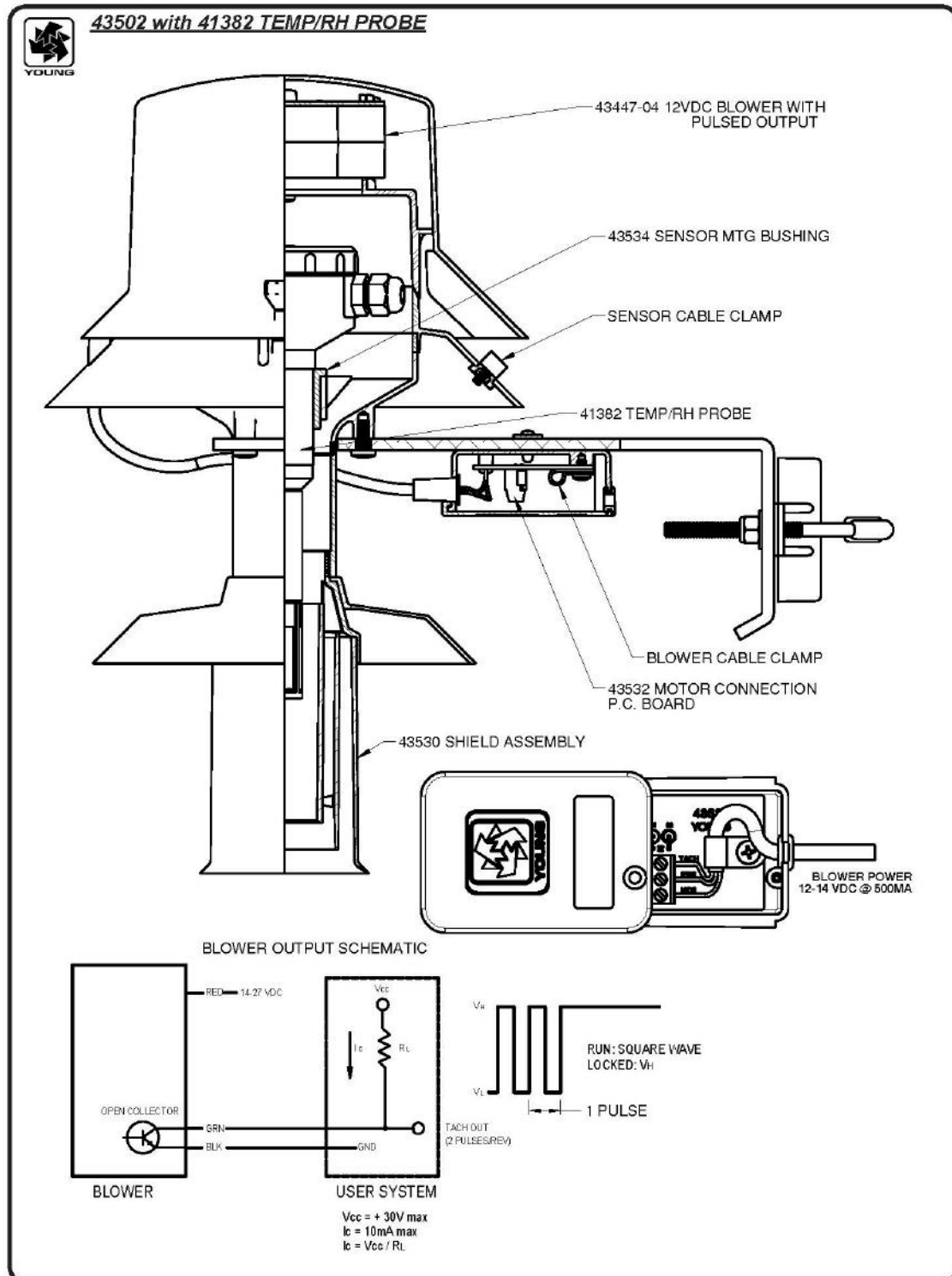
'Convert RTD resistance to temperature
RTD_RsRo = (RTD_Res / RTD_Ro)
PRT (RTD_C,1,RTD_RsRo,1.0267,0.0)

'Measure the 43502 tachometer output
PulseCount (Tach_Hz,1,11,0,1,1.0,0)

CallTable PRT_Data

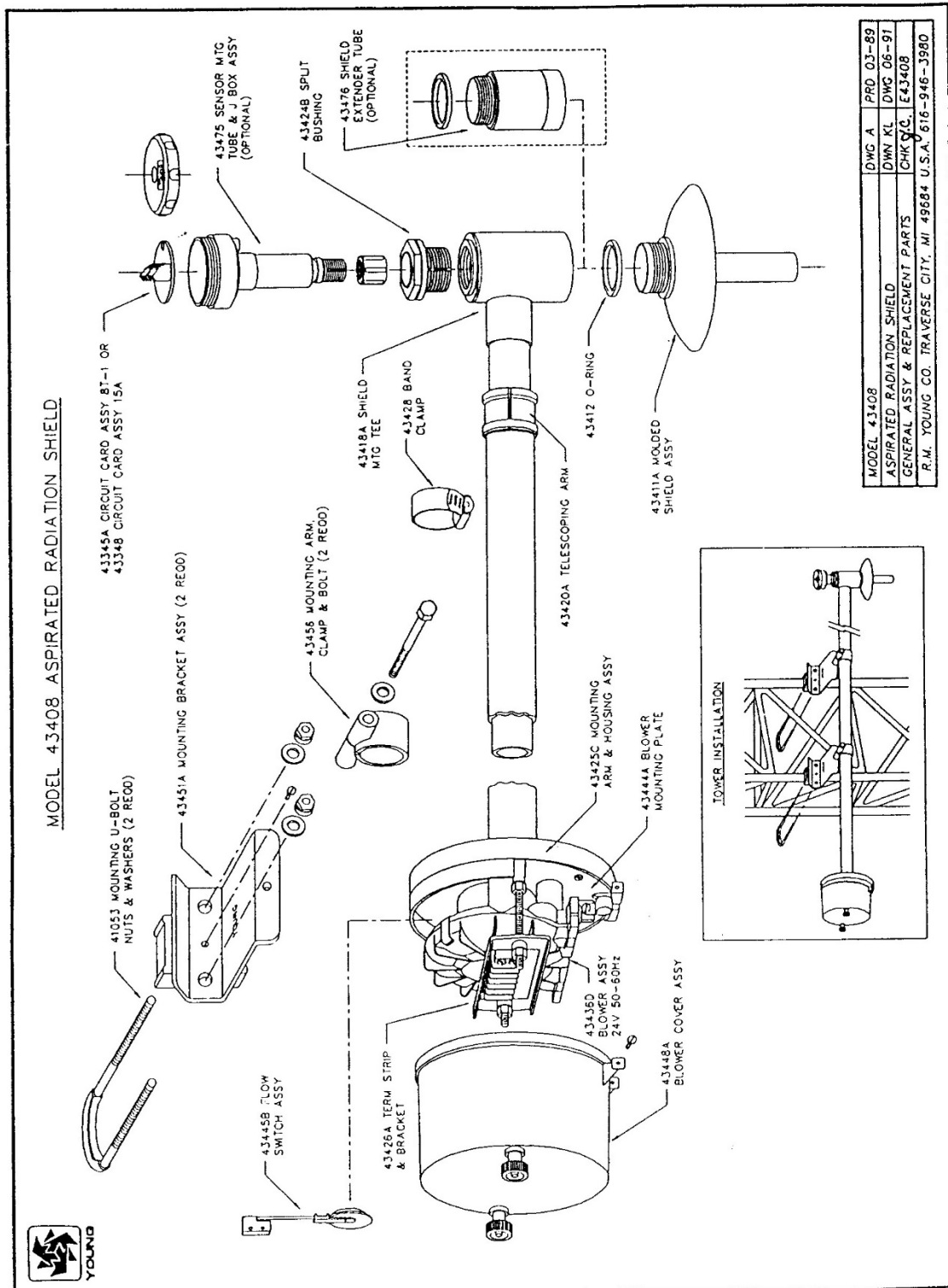
NextScan
EndProg
```


Appendix C. 43502 Aspirated Radiation Shield



43502-90(E)

Appendix D. 43408 Aspirated Radiation Shield



The 43408 radiation shield employs concentric downward facing intake tubes and a small canopy shade to isolate the temperature probe from direct and indirect radiation. The 43347 temperature probe mounts vertically in the center of the intake tubes.

A brushless 12 Vdc blower motor pulls ambient air into the shield and across the temperature probe to reduce radiation errors. The blower operates off a 115 Vac/12 Vdc transformer that is included with the shield.

D.1 Specifications

43408 ASPIRATED RADIATION SHIELD:

DIMENSIONS:

Length: 44 in, extendable to 75 in

Diameter of Blower Housing: 6 in

AIR FLOW RATE:

3 to 7 m/s depending on sensor size

TEMPERATURE RANGE: $\pm 50^{\circ}\text{C}$

POWER REQUIRED:

12 to 14 Vac @ 420 to 480 mA

115 Vac/12 Vdc - 800 mA transformer supplied

RADIATION ERROR:

$< 0.2^{\circ}\text{C}$ radiation @ 1100 W/m^2 irradiance

LIFE EXPECTANCY ON BLOWER:

80,000 hrs @ 25°C

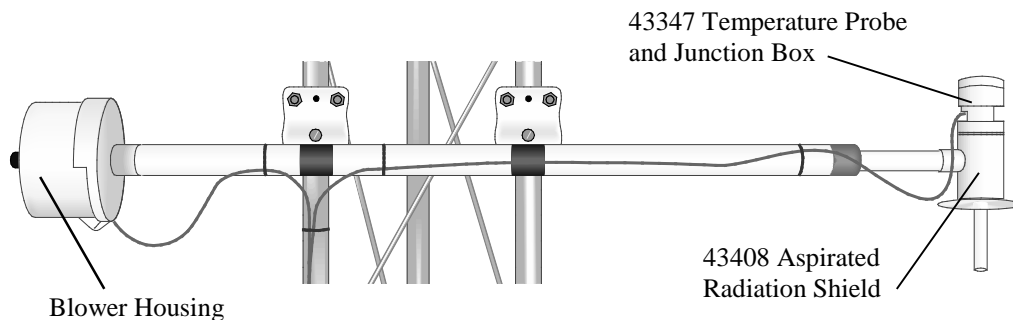


FIGURE D-1. 43347 RTD Temperature Probe and 43408 Aspirated Radiation Shield

D.2 Installation

Refer to the General Assembly drawing in the RM Young 43408 Instruction Manual (included) for reference to the names of shield components.

Thread the molded shield assembly into the appropriate threaded opening in the shield mounting tee at the end of the telescoping arm. Hand-tighten the shield to slightly compress the O-ring seal; do not cross thread or over tighten.

Insert the sensor mounting tube and junction box with its split bushing into the shield mounting tee. Tighten the threaded split bushing to secure the junction box in place; do not over tighten.

Two U-bolt brackets attach the radiation shield to horizontal, vertical, or diagonal tower members up to 2 inches in diameter, spaced 12 to 30 inches apart. Campbell Scientific pn 7515 10 m Aspirated Shield Mounting Bracket can be used to mount the shield to a single vertical pipe or mast, as shown in FIGURE D-2.

The mounting arm should be horizontal with the vent holes facing downward, with the probe end pointing towards the prevailing wind. Tighten the U-bolt brackets sufficiently for a secure hold without distorting the plastic v-blocks. Loosen the band clamp and extend the arm at least 24 inches. Rotate the shield so the intake tube is oriented vertically with the intake opening facing down. Tighten the band clamp and secure the sensor lead to the arm using UV resistant cable ties.

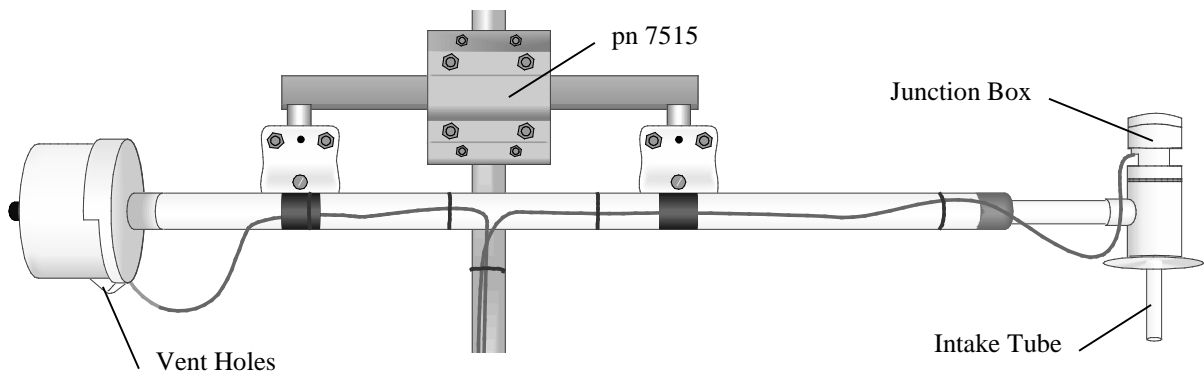


FIGURE D-2. PN 7515 10 m Aspirated Shield Mounting Bracket

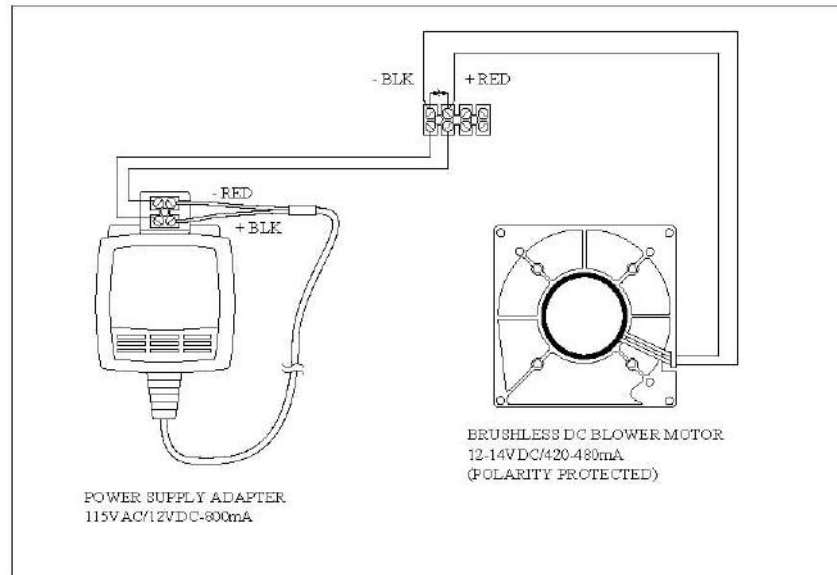


FIGURE D-3. 43408 Aspirated Radiation Shield wiring

Appendix E. Measure Two 43347-IX Probes Using One Current Excitation Channel

One current excitation channel can excite multiple 43347 probes if the “Current Return” wire of the first probe is connected to the “Current Excitation” wire of the second probe.

In theory, a single Ix channel can excite up to 25 of the 43347-IX probes with 170 μ A if all probes are at a temperature less than or equal to 45 °C. At 45 °C, the 43347 has a resistance of ~1175 Ω s. The resistance increases as more probes are connected in series. The increase of resistance requires the Ix channel to raise the driving voltage to maintain the same current. The maximum voltage the Ix channel can drive is ± 5 Vdc. Therefore, the maximum number of 43347 probes is:

$$\text{Max. voltage}/(\text{current} \cdot \text{resistance per probe at } 45^\circ\text{C})$$

$$5 \text{ V}/(0.00017 \text{ A} \cdot 1175 \Omega) = 25$$

The CR3000’s differential channel count limits the number of probes to 14 without a multiplexer.

One disadvantage to driving multiple probes with a single Ix channel is that if one probe shorts or opens then the measurements of all the probes on that Ix channel will be bad. If, for example, there are two probes at each of three levels, it might be best to drive one probe from each level on one Ix and then drive the remaining probes on a second Ix. This creates separate A and B systems, which allow maintenance to be done on one system while the other system continues to make good measurements.

E.1 Wiring

Wiring for two 43347-IX probes is shown in FIGURE E-1.



FIGURE E-1. Schematic for two 43347-IX Temperature Probes

E.2 Example Program for Two Calibrated 43347-IX Probes

This section includes an example CR3000 program that measures two calibrated 43347-IX probes. A CR5000 is programmed similarly. Wiring for the example program is shown in TABLE E-1.

TABLE E-1. Wiring for Two 43347-IX Probes Example		
Color	Function	CR3000
Probe #1		
Red	Switched Current Excitation	IX1
White	Differential High	1H
Green	Differential Low	1L
Black	Excitation Return	Red of Probe #2
Clear	Shield	\perp
Probe #2		
Red	Switched Current Excitation	Black of Probe #1
White	Differential High	2H
Green	Differential Low	2L
Black	Excitation Return	IXR
Clear	Shield	\perp
(2) 43502 Shields		
White	Tachometer	C1 for first probe, C2 for second
Red	12V power ¹	
Black	Ground ¹	
¹ wired to the 115 Vac/12 Vdc transformer supplied with the 43502, or separate 12 Vdc supply		

CRBasic Example E-1. CR3000 Example for Two Calibrated 43347-IX Probes

```
'CR3000 Series Datalogger

'Declare Variables and Units
Public RTD1_Res, RTD1_Cal_C
Public RTD2_Res, RTD2_Cal_C
Public Tach
Public Tach_1
Units Tach = Hz
Units Tach_1 = Hz

'Define Data Tables
DataTable (PRT_Data,1,1000)
DataInterval (0,15,Min,1)
Average(1,RTD1_Cal_C,IEEE4,False)
```

```

Average(1,RTD2_Cal_C,IEEE4,False)
Sample (1,Tach,FP2)
Sample (1,Tach_1,FP2)
EndTable

'Main Program
BeginProg
Scan (1,Sec,0,0)

    'Measure the 43347-IX probes
    Resistance(RTD1_Res,1,mV200,1,Ix1,1,170,True,True,0,_60Hz,1,0)
    Resistance(RTD2_Res,1,mV200,2,Ix1,1,170,True,True,0,_60Hz,1,0)

    'Convert RTD resistance to temperature
    '43347 #1 calibration  $T = -250.052585 + (R * 2.375187e-1) + (R^2 * 1.258482e-5)$ 
    RTD1_Cal_C = -250.052585 + ((RTD1_Res)*2.375187e-1) + ((RTD1_Res^2)*1.258482e-5)
    '43347 #2 calibration  $T = -250.152585 + (R * 2.475187e-1) + (R^2 * 1.358482e-5)$ 
    RTD2_Cal_C = -250.152585 + ((RTD1_Res)*2.475187e-1) + ((RTD1_Res^2)*1.358482e-5)
    CallTable PRT_Data

    'Measure the 43502 tachometer outputs
    PulseCount (Tach,1,11,0,1,1.0,0)
    PulseCount (Tach_1,1,12,0,1,1.0,0)

NextScan
EndProg

```


Campbell Scientific Companies

Campbell Scientific, Inc.

815 West 1800 North
Logan, Utah 84321
UNITED STATES

www.campbellsci.com • info@campbellsci.com

Campbell Scientific Canada Corp.

14532 – 131 Avenue NW
Edmonton AB T5L 4X4
CANADA

www.campbellsci.ca • dataloggers@campbellsci.ca

Campbell Scientific Africa Pty. Ltd.

PO Box 2450
Somerset West 7129
SOUTH AFRICA

www.campbellsci.co.za • cleroux@csafrica.co.za

Campbell Scientific Centro Caribe S.A.

300 N Cementerio, Edificio Breller
Santo Domingo, Heredia 40305
COSTA RICA

www.campbellsci.cc • info@campbellsci.cc

Campbell Scientific Southeast Asia Co., Ltd.

877/22 Nirvana@Work, Rama 9 Road
Suan Luang Subdistrict, Suan Luang District
Bangkok 10250
THAILAND

www.campbellsci.asia • info@campbellsci.asia

Campbell Scientific Ltd.

Campbell Park
80 Hathern Road
Shepshed, Loughborough LE12 9GX
UNITED KINGDOM

www.campbellsci.co.uk • sales@campbellsci.co.uk

Campbell Scientific Australia Pty. Ltd.

PO Box 8108
Garbutt Post Shop QLD 4814
AUSTRALIA

www.campbellsci.com.au • info@campbellsci.com.au

Campbell Scientific Ltd.

3 Avenue de la Division Leclerc
92160 ANTONY
FRANCE

www.campbellsci.fr • info@campbellsci.fr

Campbell Scientific (Beijing) Co., Ltd.

8B16, Floor 8 Tower B, Hanwei Plaza
7 Guanghua Road
Chaoyang, Beijing 100004
P.R. CHINA

www.campbellsci.com • info@campbellsci.com.cn

Campbell Scientific Ltd.

Fahrenheitstraße 13
28359 Bremen
GERMANY

www.campbellsci.de • info@campbellsci.de

Campbell Scientific do Brasil Ltda.

Rua Apinagés, n.br. 2018 — Perdizes
CEP: 01258-00 — São Paulo — SP
BRASIL

www.campbellsci.com.br • vendas@campbellsci.com.br

Campbell Scientific Spain, S. L.

Avda. Pompeu Fabra 7-9, local 1
08024 Barcelona
SPAIN

www.campbellsci.es • info@campbellsci.es

Please visit www.campbellsci.com to obtain contact information for your local US or international representative.