



ethereal

HELIOS

VELOX

SPYCLOPS
SURVEILLANCE SYSTEMS

InstallBay
INSTALLATION SERVICES

PREMIUM HOME THEATER PRODUCTS

Metra[®]
HOME THEATER GROUP

AT YOUR FINGERTIPS



• **NEW PRODUCTS**

• **INSTRUCTION VIDEOS**



Follow Us!



www.facebook.com/EtherealHometheater



www.twitter.com/MetraHome



www.youtube.com/user/EtherealHomeTheater



www.instagram.com/MetraHome



Order Anytime Day or Night at www.MetraHomeTheater.com



Download all our New Catalogs at www.MetraHomeTheater.com

• **FEATURES**

• **SHOW DATES**

• **Q & A**

TABLE OF CONTENTS

CABLES

HDMI® Cables	1-13
Audio Cables	14-18

ELECTRONICS

HDMI® Solutions	19-20
HDMI® Extenders	21-22
HDMI® Splitters	23-24
HDMI® Switches	25-28
Converters	29-31
IR Kits Accessories	32-35
Volume Control & Speaker Selectors	36

MOUNTS & STRUCTURED WIRING

Full Motion Mounts	37-39
Tilt Mounts	40-41
Fixed Mounts	42-44
Specialty Mounts	45-47
Speaker Mounts	48-49
Structured Wiring	50-55
Wall Plates & Inserts	56-58

POWER

Power Solutions	60
Power Surge	61-62
Power Wall Taps	63
Power Surge Strips	64-65
Power Accessories	66-68
Power Cables	69-70

SURVEILLANCE

8MP NVRs	71-73
Security NVR	74
Security POE NVR	75-76
Wireless NVR Kit	77
DVRs	78-80
Security Cameras	81-85
Junction Boxes	86
Power Distribution	87
Accessories	88

ADAPTERS & ACCESSORIES

Adapters & Accessories	89-94
------------------------	-------

CONNECTORS & TOOLS

Connectors	95
Tools	96-98

BULK WIRE

Bulk Wire	99-104
-----------	--------

HELIOS®

Cables	105-107
Electronics	108-111
Mounts	112-122
Power Solutions	123-131
Screen Cleaners	132
Power & A/V Kits	133-134
Bulk Wire	135-136

MERCHANDISE

Merchandise	137-140
-------------	---------

TERMS AND CONDITIONS

141

WARNING: This catalog does not advise whether a State of California Proposition 65 warning is required for a particular item of merchandise. To learn whether a particular item of merchandise requires a California Proposition 65 warning, please be sure to look up and read the particular merchandise's listing on Metra's website www.MetraOnline.com, as well as read the particular merchandise's packaging. When a California Proposition 65 warning is present on Metra's website listing for the particular merchandise, or on the particular merchandise's packaging, a compliant California Proposition 65 warning is to be provided to the purchasing California consumer prior to the sale of the particular merchandise.

Metra[®]
HOME THEATER GROUP

CABLES

PREMIUM HOME THEATER PRODUCTS



Fix HDMI® Problems **INSTANTLY**



Say Goodbye to Black Screens & Error Messages!

Ethereal's HDMI® diagnostic and repair tools save you from unnecessary truck rolls and long troubleshooting sessions, thanks to their ability to resolve the most common HDMI® problems.

Keep our HDMI repair products in your toolbox at all times for a quick fix that will get you out of a problem project fast!



ethereal

Exclusively Engineered

Metra
HOME THEATER GROUP

MetraHomeTheater.com 386.255.0234 The Installer's Choice®

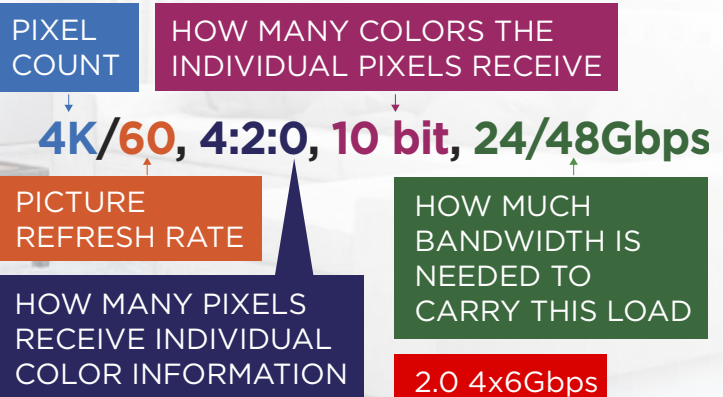


LEARN THE TRUTH...

There's a myth that all HDMI® cables are the same, from your \$5 cable to your \$500 cable. Well, that's **NOT** true. HDMI® has changed the way our cable technology must work in order to see true 4K / HDR content at 18Gbps.



If you're investing in a 4K/HDR home theater system, you'll need to also invest in the right 4K cables. Otherwise, you'll never actually experience true 4K or HDR. Which means that even with the most expensive TV or projector, you would never see the same performance as when you saw it in the showroom.



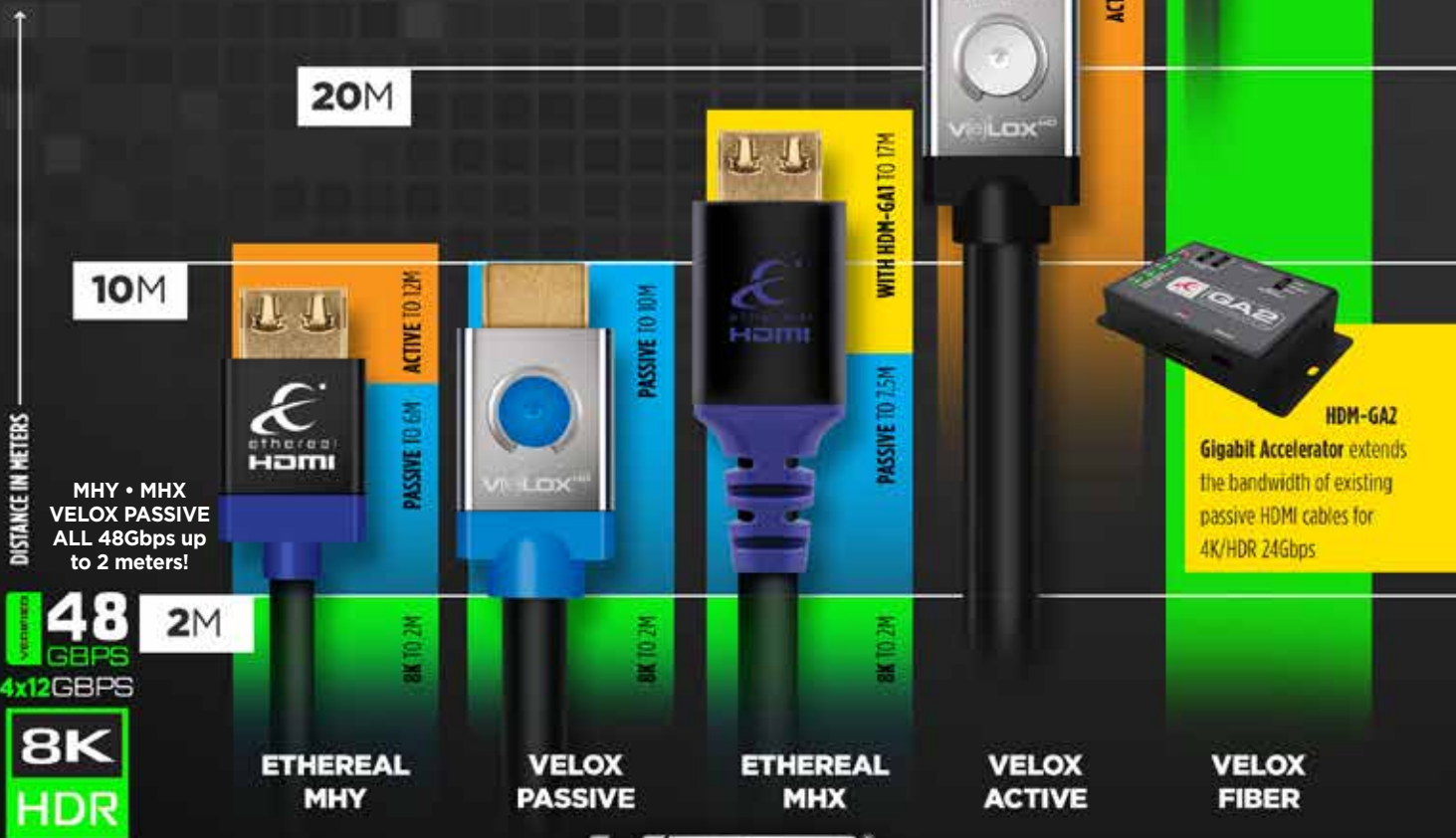
* As of 12/1/2019 the CTS for HDMI 2.1 has not been released.
Contact us directly to learn more about where we are headed with 8K!



FOR THE **BEST** PICTURE QUALITY, MAKE SURE YOUR CABLES ARE **DPL 4K CERTIFIED**

True **4K/8K HDR 24-48Gbps** HDMI® Cables that Go the Distance

Prepare for the future with HDMI® cables that can support up to 48Gbps, taking you to 4K, 8K and beyond! Take passive copper cables even farther or expand their bandwidth with the HDM-GA1 and HDM-GA2 Gigabit Accelerator. Metra Home Theater Group offers the highest-quality active and passive copper, along with active optical fiber cables to support any project's length and budget requirements. Velox provides the ultimate in performance for today's high-end systems and long-reaching needs while Ethereal's MHY and MHX are a reliable choice for shorter distance requirements.



MetraHomeTheater.com 386.255.0234

* As of 12/1/2019 the CTS for HDMI 2.1 has not been released. Contact us directly to learn more about where we are headed with 8K!



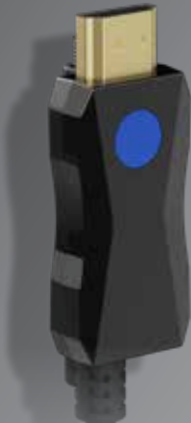
THE LINE OF INNOVATION: DOES YOUR SUPPLIER CROSS IT?

TYPE	RESOLUTION	FRAME RATE (FPS)	COLOR COMPRESSION	DEEP COLOR BIT DEPTH	HDR	WIDE COLOR GAMUT (BT2020)	HDMI VERSION	DATA RATE
HD	1920 X 1080	24	4:2:2	8 BIT	NO	NO	1.4	2.23 Gbps
HD	1920 X 1080	60	4:2:2	8 BIT	NO	NO	1.4	4.45 Gbps
HD	1920 X 1080	60	4:4:4	16 BIT	NO	NO	1.4	5.91 Gbps
UHD	3840 X 2160	24	4:2:0	8 BIT	NO	NO	1.4	8.91 Gbps
UHD	3840 X 2160	24	4:4:4	8 BIT	NO	NO	1.4	8.91 Gbps
4K	4096 X 2160	24	4:4:4	8 BIT	NO	NO	1.4	8.91 Gbps
UHD OR 4K	3840 X 2160	60	4:2:0	8 BIT	NO	NO	1.4/2.0	8.91 Gbps
UHD OR 4K	3840 X 2160	24	4:2:0	10 BIT	YES	YES	2.0 (A/B)	8.91 Gbps
LINE OF INNOVATION								
UHD OR 4K	3840 X 2160	24	4:2:2	12 BIT	YES	YES	2.0 (A/B)	11.14 Gbps
UHD OR 4K	3840 X 2160	24	4:4:4	10 BIT	YES	YES	2.0 (A/B)	11.14 Gbps
UHD OR 4K	3840 X 2160	24	4:4:4	12 BIT	YES	YES	2.0 (A/B)	13.37 Gbps
UHD OR 4K	3840 X 2160	60	4:2:0	10 BIT	YES	YES	2.0 (A/B)	13.37 Gbps
UHD OR 4K	3840 X 2160	60	4:2:0	12 BIT	YES	YES	2.0 (A/B)	13.37 Gbps
UHD OR 4K	3840 X 2160	60	4:2:2	12 BIT	YES	YES	2.0 (A/B)	17.82 Gbps
UHD OR 4K	3840 X 2160	60	4:4:4	8 BIT	YES	YES	2.0 (A/B)	17.82 Gbps
UHD OR 4K	3840 X 2160	60	4:2:2	10 BIT	YES	YES	2.1 (A/B)	22+ Gbps

NEW!

8K FIBER HDMI® CABLES

48
GBPS
4x12GBPS
8K
HDR



POLY BAG	LENGTH	
EHV-HDG2-010	10M	48Gbps* ULTRA HIGH SPEED
EHV-HDG2-015	15M	48Gbps* ULTRA HIGH SPEED
EHV-HDG2-020	20M	48Gbps* ULTRA HIGH SPEED
EHV-HDG2-025	25M	48Gbps* ULTRA HIGH SPEED
EHV-HDG2-030	30M	48Gbps* ULTRA HIGH SPEED
EHV-HDG2-050	50M	48Gbps* ULTRA HIGH SPEED
EHV-HDG2-065	65M	48Gbps* ULTRA HIGH SPEED
EHV-HDG2-080	80M	48Gbps* ULTRA HIGH SPEED
EHV-HDG2-100	100M	48Gbps* ULTRA HIGH SPEED

HDMI® CABLES

5

8K FIBER HDMI®

Velox's ultra-premium construction and high-tech engineering results in clean, reliable performance for the demands of higher bandwidth 8K content in long runs. These ultra high speed fiber HDMI® cables with Ethernet are engineered with an expected bandwidth capability up to 48Gbps for 8K content*. Multi-layer shielding prevents electromagnetic interference, maximizing noise isolation and protecting components from HDMI® ultra-low speed emanations. A thin cable diameter with a matte black jacket and 24K gold plated corrosion-resistant contact connectors provide the ultimate combination of beauty and performance. These active optical cables allow integrators to provide solutions engineered for the future of high-end, longer run home theater systems that will require 8K performance. Available in lengths from 10 to 100M/ 32.8 to 328FT.

- Expected capability of 48Gbps* bandwidth for uncompressed ultra high speed video performance
- Expected capability to support up to 8K resolutions, designed at 12Gbps per channel x 4 channels*
- Includes ethernet
- Supports all color subsampling
- Supports Dynamic HDR
- Backward compatible with HDMI® 2.0, HDCP 2.2 and all earlier versions
- 24K gold plated, corrosion-resistant contact connectors
- Multi-layer shielding to prevent electromagnetic interference, maximizing noise isolation and protecting components from HDMI® ultra low speed emanations
- Input impedance of 100 ohms
- CL-listed for in-wall installations and powered with USB on display side
- Lifetime warranty

DEEP
COLOR

DUAL
VIEW
TECH

AUDIO
32
CHANNEL

4x12
GBPS
VERIFIED

**As of this date, Compliance Test Certification (CTS) for HDMI version 2.1 has not been officially released. Specifications will be confirmed after the CTS for HDMI 2.1 has been released and the cables can be tested and certified. 8K up to 48Gbps is the anticipated resolution/bandwidth supported but may vary once final CTS has been released.*

IMPROVED DESIGN

PASSIVE HDMI® CABLES

VERIFIED **48**
GBPS
4x12GBPS

8K
HDR

VERIFIED **24**
GBPS
4x6GBPS

4K
HDR



POLY BAG LENGTH

48Gbps ULTRA HIGH SPEED

EHV-HDP1 1M 48Gbps ULTRA HIGH SPEED

EHV-HDP2 2M 48Gbps ULTRA HIGH SPEED

24Gbps HIGH SPEED

EHV-HDP3 3M 24Gbps HIGH SPEED

EHV-HDP4 4M 24Gbps HIGH SPEED

EHV-HDP5 5M 24Gbps HIGH SPEED

EHV-HDP6 6M 24Gbps HIGH SPEED

EHV-HDP8 8M 24Gbps HIGH SPEED

EHV-HDP10-R2 10M 24Gbps HIGH SPEED

PASSIVE PREMIUM HIGH SPEED

Through a proprietary design, Metra Home Theater's product team has incorporated In-Visions Technology Quiksilver Transmission Line™ into the high performance, passive, CL-rated HDMI® cable for integrators wanting the best for their clients. Supporting 24Gbps, 4K/60, 4:4:4 and HDR transmission for 10 meters, the Velox Passive HDMI® Cable removes the potential future speed cap created by integrated electronics that are in active cables.

Top features include a uniquely designed HDMI® transmission cable with advanced features in metallurgy, topology, dielectric and shielding. This new microwave RF design allows for up to 4dB less insertion loss over long distances by establishing a near linear response performance increase specifically for HDMI's TMDs High Speed Signaling. No speed cap from integrated electronics as compared to active cables. Offers the highest bandwidth performance of any passive cable available.

DIGITAL PERFORMANCE LABS (DPL) TESTED

These cables are DPL Labs (<http://www.dpplabs.com>) tested to ensure long term usability and performance. DPL testing clears away the "smoke and mirrors" common in the HDMI® cable business by creating a fair but tough comparative standard against which all HDMI® products can be tested.

**As of this date, Compliance Test Certification (CTS) for HDMI version 2.1 has not been officially released. Specifications will be confirmed after the CTS for HDMI 2.1 has been released and the cables can be tested and certified. 8K up to 48Gbps is the anticipated resolution/bandwidth supported but may vary once final CTS has been released.*



ACTIVE HDMI® CABLES

VERIFIED 24 GBPS
4x6GBPS

4K HDR



POLY BAG	LENGTH	
EHV-HDT10	10M	24Gbps HIGH SPEED
EHV-HDT12	12M	24Gbps HIGH SPEED
EHV-HDT15	15M	24Gbps HIGH SPEED
EHV-HDT20	20M	24Gbps HIGH SPEED
EHV-HDT25	25M	24Gbps HIGH SPEED
EHV-HDT30	30M	24Gbps HIGH SPEED

** 30M IS NOT DPL CERTIFIED*



HDMI® CABLES

7

ACTIVE HIGH SPEED

VELOX Active CL-rated cables combine evolutionary design and engineering techniques to support the new generation of 4K/HDR video applications. VELOX Active cables deliver a verified 24Gbps HD signal for higher resolutions, frame rates and colors over HD digital interconnects thanks to the patented Titan Chip.

VELOX Active cables OPERATE WITH THE ENTIRE 24Gbps envelope. They incorporate an innovative new version of our symmetrical HDCP and EDID rise time accelerator for both the data and clock lines on the I2C bus (the Display Data Channel). This eliminates EDID errors and, because this repair is bidirectional, ensures that the HDCP handshaking occurs reliably.

To ensure signal integrity and synchronization, VELOX cables incorporate clock amplification and intra-pair skew correction necessary for delivering the latest video and audio formats reliably. Additionally, a 100-millisecond delay on the Hot Plug Detect signal assures that the HDMI® source device receives the EDID information correctly from the sync. They are constructed of the highest quality materials, with 100% pure copper.

These cables also include VELOX's unique interchangeable color-coding scheme for easy cable identification and management.

DIGITAL PERFORMANCE LABS (DPL) TESTED

These cables are DPL Labs (www.dpllabs.com) tested to ensure long term usability and performance. DPL testing clears away the "smoke and mirrors" common in the HDMI® cable business by creating a fair but tough comparative standard against which all HDMI® products can be tested.



VALUE SERIES: GOOD BETTER BEST

HDMI® CABLES

8

MHY HDMI® CABLES

VERIFIED **48** GBPS
4x12GBPS

8K
HDR

VERIFIED **24** GBPS
4x6GBPS

4K
HDR

CL
FT4
RATED



POLY BAG LENGTH
48Gbps ULTRA HIGH SPEED

MHY-LHDME-5	0.5M	24Gbps HIGH SPEED + ETHERNET
MHY-LHDME1	1M	24Gbps HIGH SPEED + ETHERNET
MHY-LHDME1-5	1.5M	24Gbps HIGH SPEED + ETHERNET
MHY-LHDME2	2M	24Gbps HIGH SPEED + ETHERNET
24Gbps HIGH SPEED + ETHERNET		
MHY-LHDME3	3M	24Gbps HIGH SPEED + ETHERNET
MHY-LHDME4	4M	24Gbps HIGH SPEED + ETHERNET
MHY-LHDME5	5M	24Gbps HIGH SPEED + ETHERNET
MHY-LHDME6	6M	24Gbps HIGH SPEED + ETHERNET
MHY-LHDME7	7M	24Gbps HIGH SPEED + ETHERNET
MHY-LHDME8	8M	24Gbps HIGH SPEED + ETHERNET
MHY-LHDME10	10M	24Gbps HIGH SPEED + ETHERNET
MHY-LHDME12	12M	24Gbps HIGH SPEED + ETHERNET
MHY-LHDME15	15M	10.2Gbps HIGH SPEED + ETHERNET

ULTRA-FLEX SLIM HIGH SPEED WITH ETHERNET

By adding the active technology to our extended length CL-rated HDMI® cables Ethereal is now able to provide a very high level of assured high definition performance. Starting now you can do your long distance installation without having to worry whether or not the system will work. Active cables do a tremendous job of repairing the signal faults caused by copper cables. Copper cables are certainly adequate for passing low frequency signals (standard analog and traditional digital audio formats). However, high frequency signals such as those used in HDMI® high definition video and audio do not fare as well. The amount of this attenuation over longer distances is what causes the vast majority of grief that is faced in custom A/V installation profession today. Consequently providing a readable high speed signal at the end of the line has in the past required a number of different “little black boxes”. The active cable technology removes the distance roadblock by rebuilding the high speed data to a display readable quality.

- Supports 4K@60Hz HDR
- 24K gold plated Grip-Lox™ connector for securing cable to source and display devices
- Increased tensile pull tension without the risk of damaging connected equipment
- Multi-layer shielding
- Audio Return Channel (ARC)

DIGITAL PERFORMANCE LABS (DPL) TESTED

These cables are DPL Labs (www.dpllabs.com) tested to ensure long term usability and performance. DPL testing clears away the “smoke and mirrors” common in the HDMI® cable business by creating a fair but tough comparative standard against which all HDMI® products can be tested.

**As of this date, Compliance Test Certification (CTS) for HDMI version 2.1 has not been officially released. Specifications will be confirmed after the CTS for HDMI 2.1 has been released and the cables can be tested and certified. 8K up to 48Gbps is the anticipated resolution/bandwidth supported but may vary once final CTS has been released.*



24
GBPS
4x6GBPS

SPEED

4K
60 FPS

RESOLUTION

GRIP LOX

CONNECTOR

eARC

VALUE SERIES: GOOD BETTER BEST

IMPROVED DESIGN

MHX HDMI® CABLES

48
VERIFIED
 GBPS
 4x12GBPS

8K
 HDR

24
VERIFIED
 GBPS
 4x6GBPS

4K
 HDR
CL
 FT4
 RATED

POLY BAG LENGTH

48Gbps ULTRA HIGH SPEED

MHX-LHDME-5	0.5M	24Gbps HIGH SPEED + ETHERNET
MHX-LHDME1	1M	24Gbps HIGH SPEED + ETHERNET
MHX-LHDME2	2M	24Gbps HIGH SPEED + ETHERNET
		24Gbps HIGH SPEED + ETHERNET
MHX-LHDME3	3M	24Gbps HIGH SPEED + ETHERNET
MHX-LHDME4	4M	24Gbps HIGH SPEED + ETHERNET
MHX-LHDME5	5M	24Gbps HIGH SPEED + ETHERNET
MHX-LHDME6	6M	24Gbps HIGH SPEED + ETHERNET
MHX-LHDME7	7M	24Gbps HIGH SPEED + ETHERNET
MHX-LHDME7-5	7.5M	24Gbps HIGH SPEED + ETHERNET
		10Gbps HIGH SPEED* + ETHERNET
MHX-LHDME8	8M	10.2Gbps HIGH SPEED* + ETHERNET
MHX-LHDME10	10M	10.2Gbps HIGH SPEED* + ETHERNET
MHX-LHDME12	12M	10.2Gbps HIGH SPEED* + ETHERNET
MHX-LHDME15	15M	6.75Gbps HIGH SPEED* + ETHERNET
MHX-LHDME17	17M	6.75Gbps HIGH SPEED*

* 24Gbps achieved with use of the HDM-GA1 (sold separately)



HDMI® CABLES

9

DURA-PULL HIGH SPEED WITH ETHERNET

Ethereal's MHX Series CL-rated HDMI® cables with ethernet incorporate advanced engineering, quality materials and expert construction to give you high performance at an affordable price. With the ability to deliver the full 24Gbps, 4K / HDR, 4:4:4 color space experience at distances up to 7.5 meters (and at lengths of up to 17 meters when used with the HDM-GA1 Gigabit Accelerator), the MHX cable line is the answer for your 4K / HDR home theater.

All MHX cables come in a CL-rated jacket to provide behind the wall installation at an economical price without compromising video and audio performance. New 24K gold plated Grip-Lox™ connectors help secure the cable without risk of damaging connected equipment. These cables offer a premium quality abrasion resistant, high temperature PVC jacket for maximum durability, as well as low loss foam-skin polyethylene dielectric for maximum signal transfer and superior picture quality. Multiple layers of shielding prevent electromagnetic interference to maximize noise isolation as well as protecting the other components from HDMI® high speed emanations. The HDMI® ethernet channel allows you to support a wide range of IP-enabled home entertainment devices without the clutter caused by the additional network cables, eliminating the need for separate ethernet cables to enjoy high speed, bi-directional networking with speeds up to 100 Mb/sec. All MHX Series cables are DPL certified and come with a lifetime warranty.

- Supports 4K@60Hz HDR
- 24K gold plated Grip-Lox™ connector for securing cable to source and display devices
- Increased tensile pull tension without the risk of damaging connected equipment
- Multi-layer shielding
- Audio Return Channel (ARC)

DIGITAL PERFORMANCE LABS (DPL) TESTED

These cables are DPL Labs (www.dpllabs.com) tested to ensure long term usability and performance. DPL testing clears away the "smoke and mirrors" common in the HDMI® cable business by creating a fair but tough comparative standard against which all HDMI® products can be tested.


24
 GBPS
 4x6GBPS

SPEED

4K
 60 FPS

RESOLUTION

GRIP
LOX

CONNECTOR

eARC

DPL LABS™

“Integrators Most Important HDMI® Issue is RELIABILITY”

Although the HDMI® interface was introduced many years ago, the resounding ring by integrators through all those years is why can't we just put an HDMI® cable in a system and “IT WORK EACH and EVERY TIME.” This one question led to the birth of DPL Laboratories!

Who is DPL Laboratories?

- DPL Labs is the industry's premier independent Digital-HD (DHD) technology testing laboratory specializing in digital connectivity solutions - such as HDMI®
- Founded in 2008, Jeffrey Boccaccio is the Industry's foremost expert in High Speed Digital Signaling.
- DPL Labs' tests exceeds all other testing procedure standards improving the Reliability of those products with the DPL Seal of Approval Program.

What is the DPL Seal of Approval Program?

- DPL Labs' engineering team created a custom suite of tests that fully exposes 3 products strengths and weaknesses.
- Through hundreds and hundreds of field case studies, a custom testing “Argumentative Matrixm” was developed that is exclusive to the DPL Labs.
- That suite of testing procedures cover all relevant aspects of the Digital-HD (DHD) product performance and meets and/or exceeds any current testing and certification method.



What Does the DPL 4K-18DC Logo Mean?



A product bearing the DPL Seal of Approval is guaranteed to meet or exceed DPL's standards and assures the highest quality product that will give an HDMI® system years of reliable performance. DPL thoroughly tests the digital products over numerous hours of that rigorous multi-element testing regime that clearly establishes the product's performance capability. This specific logo means that the cable can handle a full 18Gbps of bandwidth and satisfies all other attributes required to meet any features offered under the current HDMI® Rev2.0 specifications. Only top quality products are able to earn that Seal of Approval.

Why Should I Buy DPL Seal of Approval Products?

With so many marketing claims that accompany cable products, it is very difficult to determine what is Real and What is pure Fiction. Rest assured that a product that has passed the DPL Seal of Approval testing regime is stating more than a marketing claim — it's Fact and has been independently tested and verified.

Follow the link to DPL website to view more of their DPL Approved Products.
<http://www.dpllabs.com/page/dpl-member-metra-home-theater-group-ethereal>

NEW!

InstallBay HDMI® CABLES
INSTALLATION HARDWARE

VERIFIED **18** GBPS
4K
HDR



POLY BAG	LENGTH	
MHY-LHDME-1-5FT	1.5FT	18Gbps HIGH SPEED + ETHERNET
MHY-LHDME-3FT	3FT	18Gbps HIGH SPEED + ETHERNET
MHY-LHDME-6FT	6FT	18Gbps HIGH SPEED + ETHERNET
MHY-LHDME-8FT	8FT	18Gbps HIGH SPEED + ETHERNET

HDMI® CABLES

11

ULTRA SLIM HIGH SPEED WITH ETHERNET

Install Bay Ultra Slim Series CL-rated HDMI® Cables with Ethernet have the greatest flexibility possible for ease of rack prep. With incredible data transfer speeds, ARC (Audio Return Channel), and ethernet support, Install Bay Ultra Slim Series HDMI® cables let you plug into a better home theater experience. Supporting resolutions up to 4K/60, HDR, at 18Gbps (on cables 8 feet or less in length), the Install Bay Ultra Slim Series HDMI® cables are ready for 4K, UHD Blu-ray, HD/4K satellite, HD cable, 4K gaming and HD internet..

New 24K gold plated locking connectors help secure the cable without risk of damaging connected equipment. Multiple layers of shielding prevent electromagnetic interference to maximize noise isolation as well as protecting the other components from HDMI® high speed emanations.

18 GBPS
SPEED

4K 60 FPS
RESOLUTION

eARC

InstallBay HDMI® CABLES
INSTALLATION HARDWARE



24
GBPS
4x6 GBPS
4K
HDR



FIBER CL3

POLY BAG	LENGTH	
IB-HDAOC-015	15FT	24Gbps HDMI® AOC + CL3 RATED
IB-HDAOC-030	30FT	24Gbps HDMI® AOC + CL3 RATED
IB-HDAOC-050	50FT	24Gbps HDMI® AOC + CL3 RATED
IB-HDAOC-065	65FT	24Gbps HDMI® AOC + CL3 RATED
IB-HDAOC-080	80FT	24Gbps HDMI® AOC + CL3 RATED
IB-HDAOC-100	100FT	24Gbps HDMI® AOC + CL3 RATED
IB-HDAOC-130	130FT	24Gbps HDMI® AOC + CL3 RATED
IB-HDAOC-200	200FT	24Gbps HDMI® AOC + CL3 RATED
IB-HDAOC-260	260FT	24Gbps HDMI® AOC + CL3 RATED

PLENUM FIBER

POLY BAG	LENGTH	
18Gbps HDMI® AOC PLENUM		
IB-HDAOCP-030	30FT	24Gbps HDMI® PLENUM + CMP RATED
IB-HDAOCP-065	65FT	24Gbps HDMI® PLENUM + CMP RATED
IB-HDAOCP-100	100FT	24Gbps HDMI® PLENUM + CMP RATED
IB-HDAOCP-160	160FT	24Gbps HDMI® PLENUM + CMP RATED

DETACHABLE CL3

POLY BAG	LENGTH	
IB-HDAOCD-030	30FT	24Gbps HDMI® AOC + CL3 RATED
IB-HDAOCD-035	35FT	24Gbps HDMI® AOC + CL3 RATED
IB-HDAOCD-050	50FT	24Gbps HDMI® AOC + CL3 RATED
IB-HDAOCD-065	65FT	24Gbps HDMI® AOC + CL3 RATED
IB-HDAOCD-080	80FT	24Gbps HDMI® AOC + CL3 RATED
IB-HDAOCD-100	100FT	24Gbps HDMI® AOC + CL3 RATED
IB-HDAOCD-130	130FT	24Gbps HDMI® AOC + CL3 RATED
IB-HDAOCD-200	200FT	24Gbps HDMI® AOC + CL3 RATED
IB-HDAOCD-260	260FT	24Gbps HDMI® AOC + CL3 RATED

ACTIVE FIBER + PLENUM HIGH SPEED FIBER

The Install Bay Active Fiber Cables create a whole new level of value and performance with the 24Gbps HDMI 2.0 specifications. The IB-HDAOC do things a little differently than your typical fiber cable. They use an ultra-energy efficient Rx/Tx chipsets they do not need any added external power, this allows for a cleaner and simpler installation. Robust head shell and jacket designs also help make for a better install by protecting the cable and its built in electronics.

- Full 24Gbps support (4K/60, 4:4:4, Deep Color & HDR)
- ARC (Audio Return Channel) support
- Ethernet over HDMI® support
- CL3 or CMP plenum rating available

24
GBPS
4x6 GBPS
SPEED

4K
60 FPS
RESOLUTION

eARC

InstallBay HDMI® CABLES
INSTALLATION HARDWARE



18 GBPS
4K
HDR

SHELF BOX

POLY BAG LENGTH

18Gbps HIGH SPEED + ETHERNET

IB-HD015	1.5FT	50 PACK SHELF BOX
IB-HD030	3FT	35 PACK SHELF BOX
IB-HD060	6FT	24 PACK SHELF BOX
IB-HD090	9FT	15 PACK SHELF BOX
IB-HD120	12FT	13 PACK SHELF BOX
IB-HD150	15FT	10 PACK SHELF BOX
IB-HD200	20FT	10 PACK SHELF BOX
IB-HD250	25FT	10 PACK SHELF BOX

10.2Gbps HIGH SPEED + ETHERNET

IB-HD350	35FT	6 PACK SHELF BOX
IB-HD500	50FT	6 PACK SHELF BOX

HD HIGH SPEED WITH ETHERNET

The Install Bay line of HDMI® cables support the latest in video technologies ideal for integrators, home builders, distributors and retailers. Each length is sold by the case pack and has a convenient tear away box top feature to easily stock your shelves with clearly marked and identifiable cable type package markings. Each cable is individually packaged with clear feature markings in resealable bags.

- IB-HD015 - IB-HD250 all support 18Gbps/4K HDR and the IB-HD350 & IB-HD500 support 10.2Gbps/4K UHD
- 24K gold plated connector
- Multi-layer shielding
- Audio Return Channel (ARC)

18 GBPS SPEED
4K 60 FPS RESOLUTION
eARC

VALUE SERIES: GOOD BETTER BEST



A
**PREMIUM OPTICAL
AUDIO CABLE**

- 24K gold plated contact connectors
- Black cotton, flexible jacket
- Colored logo for wire management

EHV-T1 1M
EHV-T2 2M
EHV-T3 3M

B
**PREMIUM STEREO
RCA AUDIO CABLE**

- 24K gold plated contact connectors
- Black cotton, flexible jacket
- Compression RCA connectors
- Colored logo for wire management

EHV-A1 1M
EHV-A2 2M

C
**PREMIUM SUBWOOFER
AUDIO CABLE**

- 24K gold plated contact connectors
- Black cotton, flexible jacket
- Compression RCA connectors
- Colored logo for wire management

EHV-SUB3 3M
EHV-SUB4 4M
EHV-SUB5 5M

D
**PREMIUM BALANCED
XLR CABLES**

- Quality analog interconnects
- True “two-channel” analog
- Woven, flexible jacket
- Lifetime warranty

EHV-XLR1 1M
EHV-XLR2 2M

VALUE SERIES: GOOD BETTER BEST

A



B



A

MHY OPTICAL

- 24K gold plated contacts
- Black cotton, flexible jacket
- Colored strain reliefs

MHY-T1	1M
MHY-T2	2M
MHY-T3	3M
MHY-T4	4M

B

MHY AUDIO

- 24K gold plated contacts
- Black cotton, flexible jacket
- Colored strain reliefs

MHY-A1	1M
MHY-A2	2M
MHY-A3	3M

24K GOLD PLATED CONTACT CONNECTORS

Not only do these cables look attractive but they are designed to deliver stunning sound year after year. These cables are tested for heavy duty use and made out of the best materials. Our 24K gold plated contacts ensure the highest signal integrity and they are corrosion resistant and provide maximum signal transfer over the life of your system.

OVERSIZED CONNECTOR PINS

An oversized 24K gold plated solid center pin is the contact that picks up and delivers the signal at each end.

HIGHLY VISIBLE COLOR MARKING

Red and white color strain reliefs make it easier to see what is connected and where, without having to unplug anything.

VALUE SERIES: GOOD BETTER BEST



A
HIGH FIDELITY BALANCED

MHX-ST1	1M	NEW!	MHX-ST4	4M
MHX-ST2	2M	NEW!	MHX-ST5	5M
MHX-ST3	3M			

ULTRA SLIM TOSLINK CABLES

- Unaffected by most common noise sources
- Finest quality optical fiber for maximum resolution
- Gold plated termination
- Ultra-low profile head shell design
- Lengths: 1, 2 & 3 meters

B
MHX OPTICAL AUDIO

MHX-T-5	0.5M	MHX-T6	6M
MHX-T1	1M	MHX-T8	8M
MHX-T2	2M	MHX-T10	10M
MHX-T3	3M	NEW! MHX-T15	15M
MHX-T4	4M		

OPTICAL AUDIO CABLES

Ethereal's MHX optical cables offer excellent value and performance. The MHX Series of optical cables are designed and manufactured to deliver the impact and dynamics of the theater and concert hall to your home.

HIGHLY VISIBLE COLOR MARKING

Purple color grips make it easier to see what is connected and where it is connected without having to unplug anything.

C **NEW!**
MHX DIGITAL COAX

MHX-D-5	0.5M
MHX-D1	1M
MHX-D2	2M

DIGITAL COAX CABLES

- 24K gold plated contact connectors
- High signal integrity
- Corrosion resistant
- Maximum signal transfer
- Convenient flexibility
- Highly visible color marking

VALUE SERIES: GOOD BETTER BEST

A

B

C

A
MHX STEREO AUDIO

MHX-A1	1M
MHX-A2	2M
MHX-A3	3M
MHX-A4	4M

B
MHX "Y" AUDIO

MHX-Y1	0.2M
MHX-Y2	0.2M

C
MHX MINI AUDIO

MHX-M1	1M
MHX-M2	2M
MHX-M2MF	2M

MHX CABLES

We have designed and built the MHX Series analog cables using the best technology available for a value based interconnect. Premium materials and shielding ensure optimal sound quality and durability. These cables are a great way to split an analog signal while still providing the best in high definition sound quality and carry a lifetime warranty. So sit back and enjoy the music - it is all there.

HIGHLY VISIBLE COLOR MARKINGS

Red and white color grips make it easier to see what is connected and where without having to unplug anything.

24K GOLD PLATED CONTACT CONNECTORS

Not only do these cables look attractive but they are designed to deliver stunning sound year after year. These cables are tested for heavy duty use and made out of the best materials. Our 24K gold plated contacts ensure the highest signal integrity and they are corrosion resistant and provide maximum signal transfer over the life of your system.

CONVENIENT FLEXIBILITY

Our highly flexible cable jackets make your install easier than ever, allowing the flexibility you need in tight places.

NEW!



SNAGLESS PATCH CABLE

CS-C512INWT	12IN	CAT5E	WHITE
CS-C512INBL	12IN	CAT5E	BLUE
CS-C53BL	3FT	CAT5E	BLUE
CS-C53WT	3FT	CAT5E	WHITE
CS-C56BL	6FT	CAT5E	BLUE
CS-C56WT	6FT	CAT5E	WHITE
CS-C59BL	9FT	CAT5E	BLUE
CS-C59WT	9FT	CAT5E	WHITE
CS-C512BL	12FT	CAT5E	BLUE
CS-C612INBL	12IN	CAT6	BLUE
CS-C618INBL	18IN	CAT6	BLUE
CS-C63WT	3FT	CAT6	WHITE
CS-C66LB	6FT	CAT6	BLUE
CS-C66WT	6FT	CAT6	WHITE
CS-C69LB	9FT	CAT6	BLUE
CS-C69WT	9FT	CAT6	WHITE
CS-C612WT	12FT	CAT6	WHITE

Metra[®]
HOME THEATER GROUP

ELECTRONICS

PREMIUM HOME THEATER PRODUCTS

Metra[®]
HOME THEATER GROUP



A

GIGABIT ACCELERATOR

- 12Gbps bandwidth X 4 channels up to 9 meters
- Greater than 30 dB of gain on the high speed video channels
- DDC (I2C) bi-direction acceleration and recovery
- Full output limiting to prevent input saturation
- Video data input indicators & system power indicator
- 8 programmable equalization settings for distance equalization
- Selectable input threshold control capability
- Extends 18Gbps capability up to 20 meters & 48Gbps capability anticipated up to 9 meters (depending on cable quality)
- Supports all features of the new HDMI® 2.0b & 2.1 specification
- 5 volt power supply and USB cable included

HDM-GA2

C NEW!

HDMI® LOW SPEED DATA CORRECTION TOOL

The Ethereal HDM-JR3 is the latest in our long line of HDMI® repair products. It continues to support and builds on our core belief that HDMI® can work correctly

- The HDM-JR3 strips capacitive loading off of the DDC (EDID) Bus, this reduces the Data Rise and improves the consistency and reliability of the low speed communications
- Small and easy to install (usually at the source side) with no extra cables needed
- Supporting 24Gbps (4 x 6Gbps per channel)
- Bi-directional EDID Repair benefits for both input and output stages

HDM-JR3

B

HDMI® ACCELERATOR

- 24 Gigabit Accelerator for passive HDMI® cables
- Works with most cables up to 15 meters, MHX up to 17 meters and Velox passive up to 22 meters
- Supports up to 24Gbps (4 x 6Gbps)
- Powered by USB cable
- Small, easy to install

HDM-GA1

D NEW!

HDMI® SURGE PROTECTOR

The HDM-SP3 is designed to clamp ESD spikes up to 8000 volts (IEC 61000) down all channels including the TMDS and DDC lines. Excellent protection from the ESD spikes that enter your systems through any of the data ports (Coax, Ethernet and Serial), usually from your CATV/ Internet provider. Please note that the HDM-SP3 does not protect you from direct lightning strikes & minor over voltage. Supporting 24 Gbps (4 x 6 Gbps per channel)

HDM-SP3





A

HDMI® EDID BLOCKER

The HDM-EDIDB EDID Blocker from Metra Home Theater Group allows most computers (PC's) and security DVRs/ NVRs to send an HDMI signal, both audio and video, to multiple displays simultaneously, making it ideal for schools, churches, recreational buildings and more. The EDID Blocker connects to the HDMI® port of a PC or security DVRs/NVRs to block the EDID communication between the source and multiple displays to eliminate failure. Many HDMI® outputs on computers (PC's) and security DVRs/NVRs only want to see one screen and fail once other displays are added to the mix, the EDID Blocker resolves the problem between sources by turning off the return data from other devices and blocking input and output.

HDM-EDIDB

B

HDM ALL-IN-ONE CORRECTION TOOL

The HDM All-in-One (HDM-AIO) is the ultimate EDID problem-solving solution. The digital analysis component can correct audio and video timing issues found in HDMI® components, including audio drop outs. Additionally, the HDM-AIO includes a voltage control trigger used to break the signal between the 5-volt and hot plug signal to create an EDID reset and provide a hot return delay of 100ms. The HDM-AIO encompasses all the correction solutions from the HDM-JR, the HDM-VI2, the HDM-ACVS and the HDM VCT.

- Supports all HDMI® 2.0b features
- Supports all HDCP formats
- Supports 18Gbps & 24Gbps (4 x 6Gbps)
- Controlled 5 volt injection
- Controlled hot plug injection
- Hot return delay of 100ms
- TMDS power insertion
- EDID capacitive stripping
- Corrects most common audio drop-outs
- Faster input switching
- Impulse synchronization
- Hot plug control with external relay
- Requires USB power

HDM-AIO2

A



B



C



D



A

HDMI® EXTENDER OVER FIBER

300M, 4K/60, HDR, RS232 & BI-DIRECTIONAL IR

- Supports HDMI® 2.0 & HDCP 2.2
- Resolutions supported: up to 4k@60Hz HDR
- Compatible with multimode fiber with LC connectors
- Transmission distance: up to 300M/984' over OM3 multimode
- Supports bi-directional IR with included IR receiver & emitter
- RS232 pass-through
- LC SFP modules included
- Mounting tabs included

CS-HDFBREXT-VLC

C

HDMI® EXTENDER

HDBASET 2.0 70M WITH US

- Supports HDMI® 2.0 & HDCP 2.2 (and earlier versions)
- Supported: 4k/60Hz 4:4:4, HDR, Deep Color
- Compatible with CAT5e/CAT6/CAT6A
- Transmission distance: up to 70M/229' over CAT6
- Supports bi-directional IR 20-60Hz with included US standard IR receiver & emitter
- Supports bi-directional RS232
- HDR & USB device support & powers from single side
- Wall mountable with included mounting tabs

CS-HDBTP2UK-70

B

HDMI® EXTENDER

HDBASET 2.0 70M + USB, ARC & DIGITAL AUDIO PASSBACK

- Supports HDMI® 2.0 & HDCP 2.2 (and earlier versions)
- Supported: 4k/60Hz 4:4:4, HDR, Deep Color
- Compatible with CAT5e/CAT6/CAT6A
- Transmission distance: up to 70M/229' over CAT6
- Supports bi-directional IR 20-60Hz with included US standard IR receiver & emitter
- Supports bi-directional RS232
- Send optical audio from TX to RX, RX to TX, Optical from RX to ARC HDMI® & traditional ARC supported
- HDR & USB device support & power from single side
- Wall mountable with included mounting tabs

CS-HDBTP2UKA-70

D

HDMI® EXTENDER OVER FIBER

HDBASET 70M OVER SINGLE CAT6

- Supports HDMI® 2.0 & HDCP 2.2 (and earlier versions)
- Supported: 4k/60Hz 4:4:4, HDR, Deep Color
- HDR support & power from single side
- Compatible with CAT5e/CAT6/CAT6A
- Transmission distance: 1080P up to 70M; 4K/30 up to 40M over CAT6
- Supports bi-directional IR 20-60Hz with included US standard IR receiver & emitter
- Wall mountable with integrated mounting tabs

CS-HDBTLPOEU-70



A
HDMI® EXTENDER OVER SINGLE CAT5E 60M WITH IR 4K

- Supports HDMI® 2.0 & HDCP 2.2
- Resolutions supported: up to 4k@60Hz
- Compatible with CAT5e/CAT6/CAT6A
- Transmission distance: up to 60M/196' over CAT6
- Supports IR pass back 20-60Hz with included IR receiver & emitter
- Powered from single side
- Wall mountable

CS-HDC5EXT4KPOE

B
HDMI® EXTENDER OVER SINGLE CAT5E 60M WITH IR, POE & LOOP OUT

- Carries HDMI® signals up to 60M over single CAT6
- 7 built-in adjustable EDID settings
- HDMI loop out on transmitter
- Includes IR blaster & IR receiver
- Power only required on single side

CS-HDC5EXTSRPOE

C
HDMI® EXTENDER OVER SINGLE CAT6

- Carries 1080p HDMI® signals up to 50M over single CAT6
- HDMI® loop out on transmitter
- Supports IR pass back, IR blaster & IR receiver
- Extender kit is powered on the transmitter

CS-HDEXTSRPOE

D
HDMI® OVER SINGLE COAX EXTENDER

- HDMI® over single coax
- Carries signals up to 100M with RG6
- 3G 1080p SDI technology
- Incredibly compact size (smaller than a business card)

CS-MINISDI

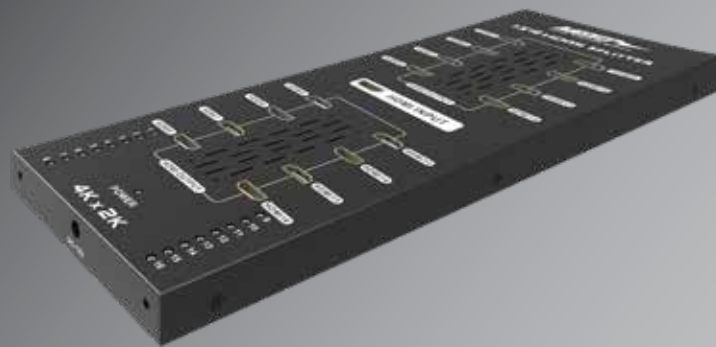
A



1X2

1X4

B



A

HDMI® SPLITTER

- Supports HDMI® 2.0 and HDCP 2.2 (and earlier versions)
- Supports 1080p, 3D, 4K/60Hz 4:4:4 up to 18Gbps
- Supports all HDR formats

- CS-1X2HDMSPL5** 2 DISPLAYS
- CS-1X4HDMSPL5** 4 DISPLAYS

B

1X16 HDMI® SPLITTER

- Distribute 1 HDMI® source to 16 HDMI® displays
- Supports HDMI® 2.0 & HDCP 2.2
- Resolution supported: up to 4K@10.2 Gbps
- HDCP compliant: HDCP 2.2
- Wall mountable

- CS-1X16HDMSPL**



A

1X2 HDMI® SPLITTER EXTENDER

- Distribute 1 HDMI® source to 2 HD displays over category cable simultaneously
- HDMI Loop-Out: 1
- Compatible with CAT5e/CAT6/CAT6A
- Transmission distance: up to 60M/196'
- Resolution supported: up to 1080p@60Hz
- Supports IR pass back 20-60Hz with included IR receivers & emitter
- Power over transmitter built-in
 - Power not required for receivers
- Wall mountable

CS-1X2HDSPLEXT

B

1X4 HDMI® SPLITTER EXTENDER

- Distribute 1 HDMI® source to 4 HD displays over category cable simultaneously
- HDMI Loop-Out: 1
- Compatible with CAT5e/CAT6/CAT6A
- Transmission distance: up to 60M/196'
- Resolution supported: up to 1080p @ 60Hz
- Supports IR pass back 20-60Hz with included IR receivers & emitter
- Power over transmitter built-in - Power not required for receivers
- Wall mountable

CS-1X4HDSPLEXT

C

1X8 HDMI® SPLITTER EXTENDER

- Distribute 1 HDMI® source to 8 HD displays over category cable simultaneously
- HDMI loop-out: 1
- Compatible with CAT5e/CAT6/CAT6A
- Transmission distance: up to 60M/196'
- Resolution supported: up to 1080p@60Hz
- Supports IR pass back 20-60Hz with included IR receivers & emitter
- Power over transmitter built-in - Power not required for receivers
- Wall mountable

CS-1X8HDSPLEXT

A

3X1



5X1



B



C



A

HDMI® SWITCHES

- Supports HDMI® 2.0 and HDCP 2.2 (and earlier versions)
- Supports 1080p, 3D, 4K/60Hz up to 18Gbps
- Supports all HDR formats
- Supports control with IR & RS232

CS-HDM3X1SW4 3 SOURCES
CS-HDM5X1SW4 5 SOURCES

B

HDMI® SWITCHES

- HDMI® switch with 5 inputs and 1 output
- Supports 480i/576i/480p/576p/720p/1080i/1080P resolutions
- Supports control with IR

AS-HDM-5X1SW 5 SOURCES

C

HDMI® SWITCH

4 INPUTS + 1 OUTPUT

- Supports HDMI 2.0 and HDCP 2.2 (and earlier versions)
- Supports 1080p, 3D, 4K/60Hz, up to 18Gbps
- Supports all HDR formats
- Includes audio break out: stereo, Toslink, digital coax & ARC support
- Supports control with IR

CS-HDM4X1ASW4



A NEW!

4X4 / 8X8 HDBaseT HDMI® MATRIX WITH SCALING

Integrators can now provide video distribution without defaulting to the lowest resolution in the system, allowing legacy and new 4K technology to co-exist. The 4x4 or 8x8 HDMI® Matrix provides your HDMI® distribution system with the technology required to send up to 4/8 separate sources at different resolutions to 4/8 displays. This is a very flexible matrix! It supports 4K/60, HDR, HLG and Dolby Vision as well as digital coax multi-channel output and/or 3.5mm stereo PCM connections, plus resolution scaling on the mirrored HDBaseT outputs.

- HDMI® and HDBaseT (mirrored) outputs
- 18Gbps uncompressed on HDMI® outputs
- 18Gbps with minimal loss compression on HDBaseT outputs
- 4K/60, HDR@70M on HDBaseT outputs
- Supports HDCP, all versions up to and including 2.2
- Built-in EDID management
- Digital coax multi-channel and PCM analog audio outputs
- 4/8 IR inputs (sending to display)
- 4/8 IR outputs (receiving from display)
- IP, RS232 and IR control + direct front panel control
- Rack ears included
- Pre-built drivers for most control systems: Crestron, C4, RTI and more
- Receiver sold separately: CS-RECHDBT

CS-44MHDBTS 4x4 HDBaseT Matrix

CS-88MHDBTS 8x8 HDBaseT Matrix



B

B NEW!

HDBASE RECEIVER FOR HDBASET MATRIX

Take full advantage of all features offered from our Matrix models by adding this accessory, the CS-RECHDBT receiver.

- No need for external power
- Sold 1 per package

CS-RECHDBT

A

4x4



8x8

**A****NEW!**

4X4 HDMI® MATRIX QUICK SWITCHING

The 4x4 or 8x8 HDMI® Quick Switching Matrix provides your HDMI® distribution system with the technology required to send up to 4/8 sources to 4/8 displays. Supporting 4K/60, HDR, HLG and Dolby Vision as well as digital coax multi-channel output and/or 3.5MM stereo connections. Since your system setup and testing is a vital part of your installation, we also include a built-in signal generator to make your job even simpler. Pre-built drivers for the most commonly used control systems make smart-home integration easy.

- Quick switching capability reduces user wait
- 18Gbps uncompressed on HDMI® outputs
- 4K/60, HDR, HLG and Dolby Vision
- Supports HDCP, all versions up to and including 2.2
- Built-in EDID management
- Digital coax multi-channel and PCM analog audio outputs
- 4/8 IR inputs (sending to display)
- 4/8 IR outputs (receiving from display)
- IP, RS232 and IR control
- Rack ears included
- Pre-built drivers for most control systems: Crestron, C4, RTI and more

CS-44M 4x4 Matrix

CS-88M 8x8 Matrix



A NEW!

HDMI® 4X1 MULTI-VIEWER

The all new CS-4X1MVU gives you the ability to simultaneously show up to 4 sources with different resolutions on one display. For example, show multiple sports games on one screen or a computer display and a Blu-ray player, or show a video game and a cable box at the same time. This also allows you to select which input's audio is sent to the display.

- View up to 4 sources simultaneously on one display
- Selectable audio with included IR remote
- Inputs supports 720p, 1080p, 1440p & 4K@30Hz
- Multiple split screen viewing modes
- Supports HDMI® 1.4
- Output supports 720p, 1080p, 1440p & 4K@30Hz

CS-4X1MVU

VIEW OPTIONS:



A



B



C



D



E



A

STEREO 3.5MM OVER CAT5 EXTENDER

- Extends up to 150'
- 3.5MM stereo to RJ45 connector

CS-C535 1 PACK

B

USB OVER CAT5 EXTENDER

- Extends up to 150'
- USB male/female to RJ45 connector
- Supports USB1.1 speeds
- Ideal for peripheral connections such as keyboard, mouse and printers

CS-C5USB 1 PAIR

C

STEREO RCA OVER CAT5 EXTENDER

- Extends up to 150ft
- RCA (L/R) to RJ45 connector

CS-C5RCA 1 PACK

D

ANALOG AUDIO BALUN

- Extends audio over standard CAT5e/CAT6 cables
- 20Hz to 20KHz bandwidth
- Distance supported: Up to 3280' (1000M)
- Insertion Loss: Less than 2 dB over frequency range

CS-C5SA1

E

DIGITAL AUDIO EXTENDER

- Extends up to 328'
- Supports optical and digital coax
- Powered from single side

CS-C5DE



A
ANALOG TO DIGITAL CONVERTER

- Converts analog to digital signal (PCM)
- Supports optical & digital coax outputs
- Stereo RCA input

CS-ATD

B
DIGITAL TO ANALOG CONVERTER

With the removal of analog connections on source devices, our new digital to analog converter becomes a must have in the field.

- Converts digital signal (PCM) to analog
- Supports optical and digital coax inputs
- Stereo RCA output

CS-DAC

C
**DIGITAL TO DIGITAL
FORMAT CONVERTER**

- Coaxial or digital audio
- Supports S/PDIF audio & extends transferring distance
- 1x coaxial jack & 1x optical jack inputs
- 1x coaxial jack & 1x optical jack outputs

CS-D2D

D
HDMI® AUDIO BREAKOUT

Easily obtain an analog or digital audio output connection from an existing HDMI® source.

- HDMI® pass through with un-embedded audio
- Selectable HDMI® audio on HDMI® output for native pass through, 5.1 CH or 2 CH
- Breaks out PCM audio output for toslink, digital coax and 3.5MM stereo analog

CS-HDMABO

E **NEW!**
HDMI® AUDIO DE-EMBEDDER

- Easily obtain an analog or digital audio output connection from an existing HDMI® source
- HDMI® pass-through with de-embedded audio
- Selectable HDMI® audio on HDMI® output for native pass-through, 5.1 CH or 2 CH
- Audio outputs: optical audio Toslink and 3.5MM stereo analog
- Optical digital audio supports multi-channel + 2 CH
- Supports HDMI® 2.0 and HDCP 2.2 (and earlier versions)
- Supports 1080p, 3D, 4K/60Hz 4:4:4 up to 18Gbps
- * Does not de-embed Dolby Atmos

CS-HDMABO3

A



B



C



D



E



A

HDMI® TO COMPOSITE CONVERTER

- HDMI® to composite video - plus L/R Audio A/V converter
- Powered by USB
- USB power cable included
- 1A minimum USB power supply required (not included) EHD-USBPWR recommended

CS-HDMAV

B

HDMI® TO VGA CONVERTER

- Powered by USB
- USB power cable included
- 1A minimum USB power supply required (not included) EHD-USBPWR recommended

CS-HDMVGA

C

VGA AND 3.5MM STEREO AUDIO TO HDMI® CONVERTER

- Converts VGA video and stereo audio to HDMI®
- Powered by USB
- USB power cable included
- 1A minimum USB power supply required (not included) EHD-USBPWR recommended

CS-VGAHDM

D

COMPOSITE TO HDMI® VIDEO CONVERTER

- Composite video + L/R Audio A/V to HDMI® converter
- Selectable 720p & 1080p outputs
- Powered by USB
- USB power cable included
- 1A minimum USB power supply required (not included) EHD-USBPWR recommended

CS-AVHDM

E

COMPONENT TO HDMI® CONVERTER

- YPbPr (component) video + L/R audio to HDMI® converter
- Integrate older analog devices into the modern home theater

CS-CVHDM



A

IR KIT WITH 1 BAR RECEIVER & 4 EMITTERS

- Receive frequency range: 38KHz & 56KHz
- Transmit frequency range: 38KHz & 56KHz
- Multi-input for IR receivers
- 6 port IR connecting block
- 4 IR emitters 3M/9.84'
- 12 volt power supply

CS-IRKITIUS

B

IR KIT WITH IR CONTROLLED CONTACT CLOSURE

A "US 12V IR standard" plus a built-in "contact closure" relay with "IR Code Learning" for its Open and Close states. This gives the CS-IRKITCCUS the ability to control a wide variety of products including TV lifts, projection screens, curtains and the Ethereal HDM-AIO and HDM-VCT HDMI® repair devices.

CS-IRKITCCUS

A



B



C



D



A

**IR CONNECTING CABLE
STEREO TO MONO**

- 3.5MM stereo plug to 3.5MM mono plug
- For use when adding connecting block to control systems
- Cable length is 1M/3.28'

CS-IRCC

B

IR SINGLE EMITTER

- Works with major US IR repeating systems
- Transmit frequency range: 38KHz & 56KHz
- Cable length is 3M/9.84'
- 3.5MM mono mini plug

CS-IR1EUS WITHOUT RED LED FEEDBACK
CS-IR1EFUS WITH RED LED FEEDBACK

C

IR DUAL EMITTER

- Works with major US IR repeating systems
- Transmit frequency range: 38KHz & 56KHz
- Cable length is 3M/9.84'
- 3.5MM mono mini plug

CS-IR2EUS DUAL EMITTER

D

IR BAR RECEIVER

- Works with major US IR repeating systems
- Receive frequency range: 38KHz & 56KHz
- Cable length is 3M/9.84'
- 3.5MM stereo mini plug

CS-IRBR1US



A
IR CONNECTING BLOCK

- Works with major US IR repeating systems
- Receive frequency range: 38KHz & 56KHz
- Transmit frequency range: 38KHz & 56KHz
- Multi-input for IR receivers
- 6-port IR connecting block
- Expansion capability

CS-IRCB1US

B
IR SYSTEM 12V POWER SUPPLY

- 12 volt power supply for CS-IRCB1US

CS-IRPST1US

C
INFRA-RED KIT

Hide AV equipment and take control of up to 8 devices with Helios' new Plasma proof IR kit. The AS-IRKIT includes:

- (1) IR repeater hub
- (1) IR receiver
- (4) dual IR emitters (30-60kHz)
(1) 1M & (3) 2M
- 1 AC adapter

AS-IRKIT

A



B



C



D



A

USB POWERED IR EXTENDER

Keep your A/V devices hidden without sacrificing control

- 6' USB IR receiver with LED feedback supports 20-60kHz frequencies
- 4 compact IR emitters with 3' extension cables
- Easily powered with televisions USB port or use separate USB power

AS-IRUSB4

B

IR EMITTER COVER

- Ideal preventing IR bleed and additional holding strength for IR emitters
- Color: Black

CS-IRECUS 10 PACK

C

IR EMITTER ADHESIVE PADS

- Ideal to replace worn emitter sticky pads
- Pre-cut 3M double sided adhesive pads

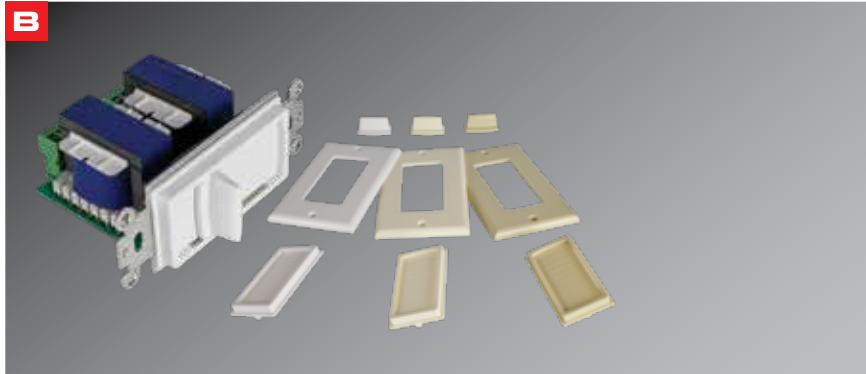
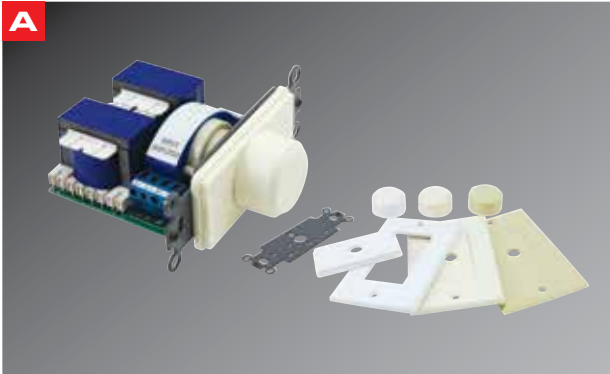
CS-IRPADUS 25 PACK

D

3.5MM STEREO MINI BREAKOUT

- Save money
- Simplify wiring requirements
- Connect pretty much any bare 16-24 gauge into a 3.5MM stereo jack
- The pin-out configuration on the 3.5MM receptacle port and the EHT-3-5SBO is all that is needed

EHT-3-5SBO



A

ROTARY VOLUME CONTROL

The VC700 feature selectable impedance setting at 2X, 4X and 8X the speaker's nominal impedance. Both are shipped with white, ivory and bone colored wall plates. The VC700 can be installed in either standard single plate or decora style applications.

VC700

B

SLIDER VOLUME CONTROL

The VS100 feature selectable impedance setting at 2X, 4X and 8X the speaker's nominal impedance. Both are shipped with white, ivory and bone colored wall plates. The VC700 can be installed in either standard single plate or decora style applications.

VS100

C

LOW PROFILE 4 ZONE SPEAKER SELECTOR

- Route speaker cables from each listening zone to the speaker selector
- Route speaker cables from the amplifier to the speaker selector
- Remove approximately 8" of the outer jacket from the speaker cable (if necessary)
- Strip approximately 3/8" of insulation from each conductor and twist the exposed strands together to avoid fraying
- Press the push terminal and insert the conductor; release to make contact
- Set impedance protection to ON and OFF as necessary

AS-SS4

D

LOW PROFILE 6 ZONE SPEAKER SELECTOR

- Route speaker cables from each listening zone to the speaker selector
- Route speaker cables from the amplifier to the speaker selector
- Remove approximately 8" of the outer jacket from the speaker cable (if necessary)
- Strip approximately 3/8" of insulation from each conductor and twist the exposed strands together to avoid fraying
- Press the push terminal and insert the conductor; release to make contact
- Set impedance protection to ON and OFF as necessary

AS-SS6

**MOUNTS &
STRUCTURED WIRING**

PREMIUM HOME THEATER PRODUCTS



MOUNTS &
STRUCTURED WIRING

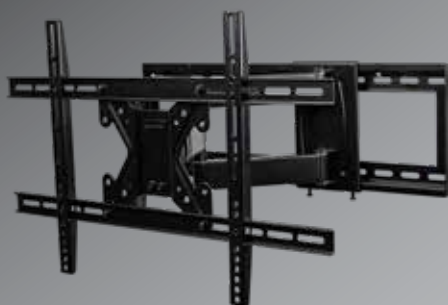
PREMIUM HOME THEATER PRODUCTS

Metra[®]
HOME THEATER GROUP

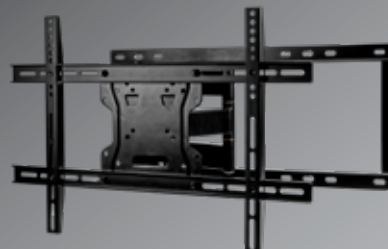
A



B



C



A

MEDIUM SINGLE STUD FULL-MOTION MOUNT

- Fits TVs 26"-60"
- Tilting angle: +5°/-15°
- Extension: 64 - 484MM (2.5"- 19.1")
- Swivel angle: +90°/-90°/-
- Weight capacity: 66 lbs.
- VESA compliant: 100x100, 200x100, 200x200, 200x400, 400x200, 400x400
- Single stud installation
- All steel construction
- All hardware & mounting level included
- Durable black powder coat finish
- Replaces FM2642
- UL listed

FMM44

B

FULL MOTION MOUNT

- Fits TVs 32"-65"
- Tilt angle +5°/-15°
- Swivel angle +/-45°
- Adjustable center position for pivot arm
- Weight capacity: 75 lbs.
- VESA compliant: 200x200 - 600x400
- Heavy gauge steel
- All hardware & mounting level included

FML64PL

C

LARGE FULL MOTION SIDE EXTENSION MOUNT

- Fits TVs 42"-84"
- Tilting angle: +5°/-15°
- Extension: 80 - 550MM (3.2"- 21.7")
- Swivel angle: +90°/-90°/-
- Weight capacity: 132 lbs.
- VESA compliant: 100x100, 200x100, 200x200, 400x200, 400x400, 600x400
- Dual stud installation with 16" or 24" on center studs
- All steel construction
- All hardware & mounting level included
- Durable black powder coat finish
- UL listed
- Replaces FM2260

FML64S



A
**LARGE FULL MOTION CENTER
 EXTENSION MOUNT**

- Fits TVs 42"-84"
- Tilting angle: +5°/-15°
- Extension: 70 - 470MM (2.8"- 18.5")
- Swivel angle: +45°/-45°/-
- Weight capacity: 132 lbs.
- VESA compliant: 200x200, 400x200, 400x400, 600x400
- Dual stud installation with 16" or 24" on center studs
- All steel construction
- All hardware & mounting level included
- Durable black powder coat finish
- UL listed
- Replaces FM3260

FML642

B
**FULL MOTION
 IN-WALL 400X400**

- Fits TVs 32"-60"
- Tilting angle: +5°/-15°
- Extension: up to 381MM (15")
- Swivel angle: +90°/-90°/
- Weight capacity: 75 lbs.
- VESA compliant: 100x100, 200x200, 400x400
 (See additional VESA options with the CS-2264ADPT below)
- In wall installation between 16" on center studs
- All steel construction
- All hardware included
- Durable black powder coat finish
- ETL listed

FM44IW

MOUNT ADAPTER BRACKET

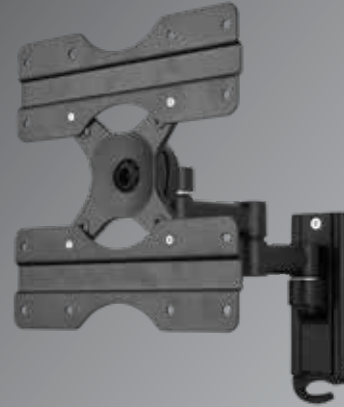
- Convert the FM44IW to support more options
- Adds 300x300 to 600x400 VESA mount capabilities. Seen on page 47

CS-2264ADPT

A



B



A

EXTRA LARGE FULL MOTION

- Fits TVs 42"-90"
- Swivel angle +/-90°
- Weight capacity: 150 lbs.
- VESA compliant up to 700x500 including 200x100, 200x200, 200x300, 300x200, 300x300, 400x200, 400x300, 400x400, 600x400 & 700x500
- Depth from wall: 3.6"
- Extends 31" from wall
- UL listed

FMXL75

B

SWIVEL FULL MOTION

- Fits TVs 24"-32"
- Tilt angle: +/-13.8°
- Swivel angle: up to 180°
- Weight capacity: 55 lbs.
- VESA compliant: 75x75, 100x100, 200x100, 200x200
- Extension: 3.1" to 10.8"
- Heavy gauge steel
- Includes hardware & level
- UL listed

EAM32



A

TILT MOUNT

- Fits TVs 26"-42"
- Tilt angle +0°/-15°
- Distance to wall 55MM
- Weight capacity: 66 lbs.
- VESA compliant: 100x100, 100x200, 200x200
- Heavy gauge steel
- All hardware & mounting level included
- ETL listed

T2642-E

B

TILT MOUNT

- Fits TVs 32"-55"
- Supports up to 100 lbs.
- 1.97" from the wall
- Tilting angle: +0°/-7°
- VESA compliant: 100x100 - 400x400
- Sturdy steel construction
- UL listed

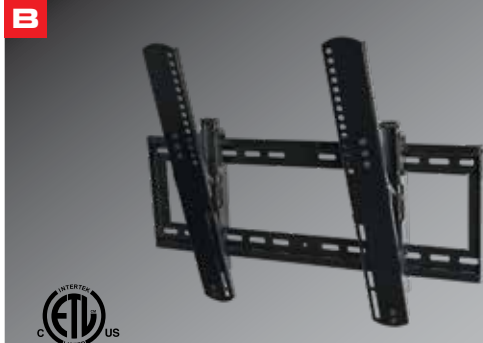
CS-TM44E

C

TILT MOUNT

- Fits TVs 32"-80"
- Supports up to 150 lbs.
- 1.97" from the wall
- Tilting angle: +0°/-7°
- VESA compliant: 100x100 - 600x400
- Sturdy steel construction
- UL listed

CS-TL64E



A
TILT MOUNT
LARGE DISPLAYS

- Fits TVs 32"-60"
- Tilt angle: +0°/-15°
- Distance to wall: 42MM
- Weight capacity: 88 lbs.
- VESA compliant: 200x200, 600x400
- Heavy gauge steel
- Sold as case packs of 4
- ETL listed

TL64

B
TILT MOUNT

- Fits TVs 26"-42"
- Tilt angle: +0°/-20°
- Distance to wall: 27MM
- Weight capacity: 70 lbs.
- VESA compliant: 100x100/200, 200x200, 400x400
- Heavy gauge steel
- All hardware & mounting level included
- ETL listed

T2642

C
TILT MOUNT
POST LEVELING

- Fits TVs 32"-65"
- Post leveling +/- 10MM
- Tilt angle: +0°/-15°
- Distance to wall: 43MM
- Weight capacity: 99 lbs.
- VESA compliant: 200x200, 600x400
- Heavy gauge steel

TL64PL

D
TILT MOUNT

- Fits TVs 32"-60"
- Tilt angle: +0°/-15°
- Distance to wall: 68MM
- Weight capacity: 110 lbs.
- VESA compliant: 200x200, 200x400, 600x400
- Heavy gauge steel
- All hardware & mounting level included
- ETL listed

T3260

LOW PROFILE MOUNTS

FIXED MOUNTS

42



A

LOW PROFILE MOUNT

- Fits TVs 23"-55"
- Supports up to 100 lbs.
- 1.1" from the wall
- VESA compliant:
100x100 - 400x400
- Sturdy steel construction
- UL listed

CS-LP44E

B

LOW PROFILE MOUNT

- Fits TVs 32"-80"
- Supports up to 150 lbs.
- 1.1" from the wall
- VESA compliant:
100x100 - 400x600
- Sturdy steel construction
- UL listed

CS-LP64E

A



B



C



A

**FIXED
LOW PROFILE**

- Fits TVs 26"-42"
- Distance to wall: 28MM
- Weight capacity: 100 lbs.
- VESA compliant:
100x100, 100x200,
200x200, 200x400,
300x400/400
- Heavy gauge steel
- All hardware &
mounting level included
- ETL listed

LP2642

B

**FIXED
LOW PROFILE**

- Fits TVs 32"-60"
- Distance to wall: 32MM
- Weight capacity: 132 lbs.
- VESA compliant:
200x200, 200x400,
400x400, 600x400
- Heavy gauge steel
- All hardware &
mounting level included
- ETL listed

LP3260

C

**ULTRA LOW
PROFILE FIXED MOUNT**

- Fits TVs 42"-84"
- Depth from wall: 14MM (0.55")
- Weight capacity: 99 lbs.
- VESA compliant: 100x100,
200x100, 200x200, 400x200,
400x400, 600x400
- Dual stud installation with 16" or
24" on center studs
- All steel construction
- All hardware & mounting
level included
- Durable black powder coat finish
- UL listed

LPU64

LOW PROFILE MOUNTS

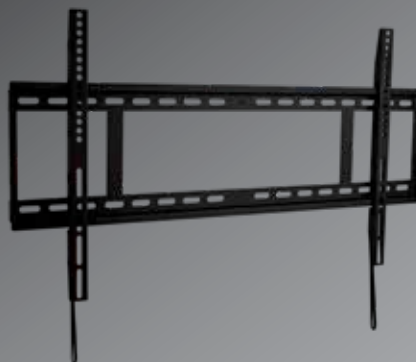
FIXED MOUNTS

44

A



B



A

POST LEVELING

- Fits TVs 32"-80"
- Post leveling: +/- 10MM
- Distance to wall: 35MM
- Weight capacity: 132 lbs.
- VESA compliant:
200x200 - 600x400
- Heavy gauge steel
- All hardware & mounting level included

LP64PL

B

FIXED LOW PROFILE

- Fits TVs 47"-85"
- Distance to wall: 30MM
- Weight capacity: 176 lbs.
- VESA compliant:
200x200, 200x400, 400x400,
600x400, 800x400
- Heavy gauge steel
- All hardware & mounting level included
- ETL listed

LP3265

A



B



A

CEILING MOUNT

- Fits TVs 32"-60"
- Tilt angle: +5°/-15°
- Rotary angle: +/- 180°
- Height adjustable: 800-1500MM
- Weight capacity: 132 lbs.
- VESA compliant:
200x200 - 400x400
- Heavy gauge steel
- All hardware & mounting level included
- ETL listed

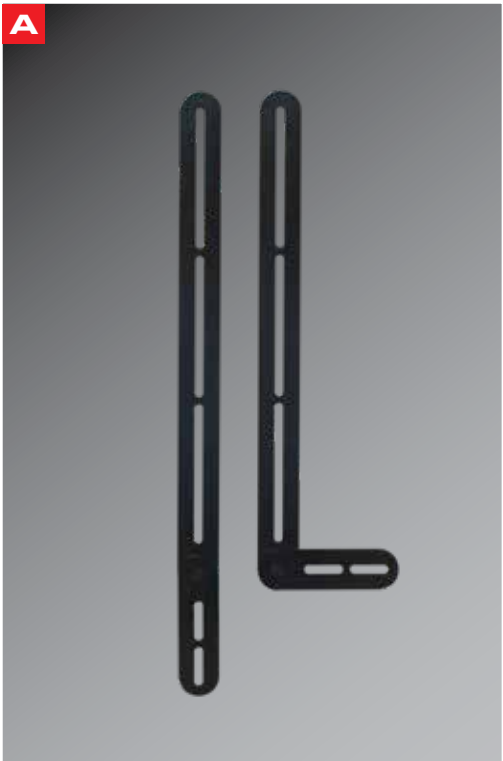
AS-CM3260

B

**CEILING MOUNT
PROJECTOR**

- Tilt angle: +/-30°
- Rotary angle: 360°
- Weight capacity: 30 lbs.
- Heavy gauge steel
- All hardware & mounting level included
- UL listed

EPM-UNI



A

SOUND BAR MOUNT

- VESA compliant: up to 600x400
- Weight capacity: up to 33 lbs.
- Extra flexible design allows sound bar installation above or below on most televisions
- Sturdy steel construction

SBMSW

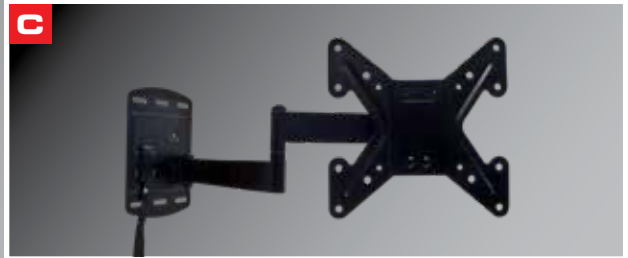
B

TAILGATE TV MOUNT

Turn your tailgate or trailer hitch into an instant entertainment center! This sturdy TV mount is compatible with most 32" to 55" flat screen televisions and hooks into a standard 2" trailer hitch receiver, found on most vehicles. It's easy to assemble, install and break down. You can extend the arm and adjust the pole up or down to find the perfect position for your ideal TV viewing position. The weatherproof black powder coat finish is durable to withstand the elements, rain or shine, and this mount is designed with clearance to allow for tailgate up or down configurations. When you're done watching TV, simply loosen the lock nut, slide the TV off the pole, and you're ready to go. The mount must be secured to your vehicle's trailer hitch using a hitch pin (not included). All other TV mounting hardware, including brackets, spacers, screws, bolts and a lock pin are included for assembly with the mount to create a robust tailgate entertainment solution.

- Supports: up to 60 lbs.
- VESA compliant with 100x100, 200x200, 400x400 & 600x400 patterns
- Compatible with 2" hitch receiver (requires adapter for use with 1.25")

TGML64



A

ROLLING CART

- Fits TVs 32"-60"
- Adjustable height: 1200-1800MM
- Supports up to 132 lbs.
- Locking wheels
- VESA compliant: 200x200, 400x400, 600x480
- Heavy gauge steel
- All hardware included
- 5 year limited warranty
- ETL listed

AS-RC3260

C

RV/BOAT MOUNT

RV/BOAT

- Fits TVs 26"-42"
- Locks into flush position for safe transport on RVs and boats/yachts
- VESA compliant: 100x100 - 200x200
- Weight capacity: 33 lbs.
- Sturdy steel construction

FML22-R2

B

RV/BOAT MOUNT

RV/BOAT

- Fits TVs 26"-42"
- Locks into flush position for safe transport on RVs and boats/yachts
- VESA compliant: 100x100 - 200x200
- Weight capacity: 40 lbs.
- Sturdy steel construction

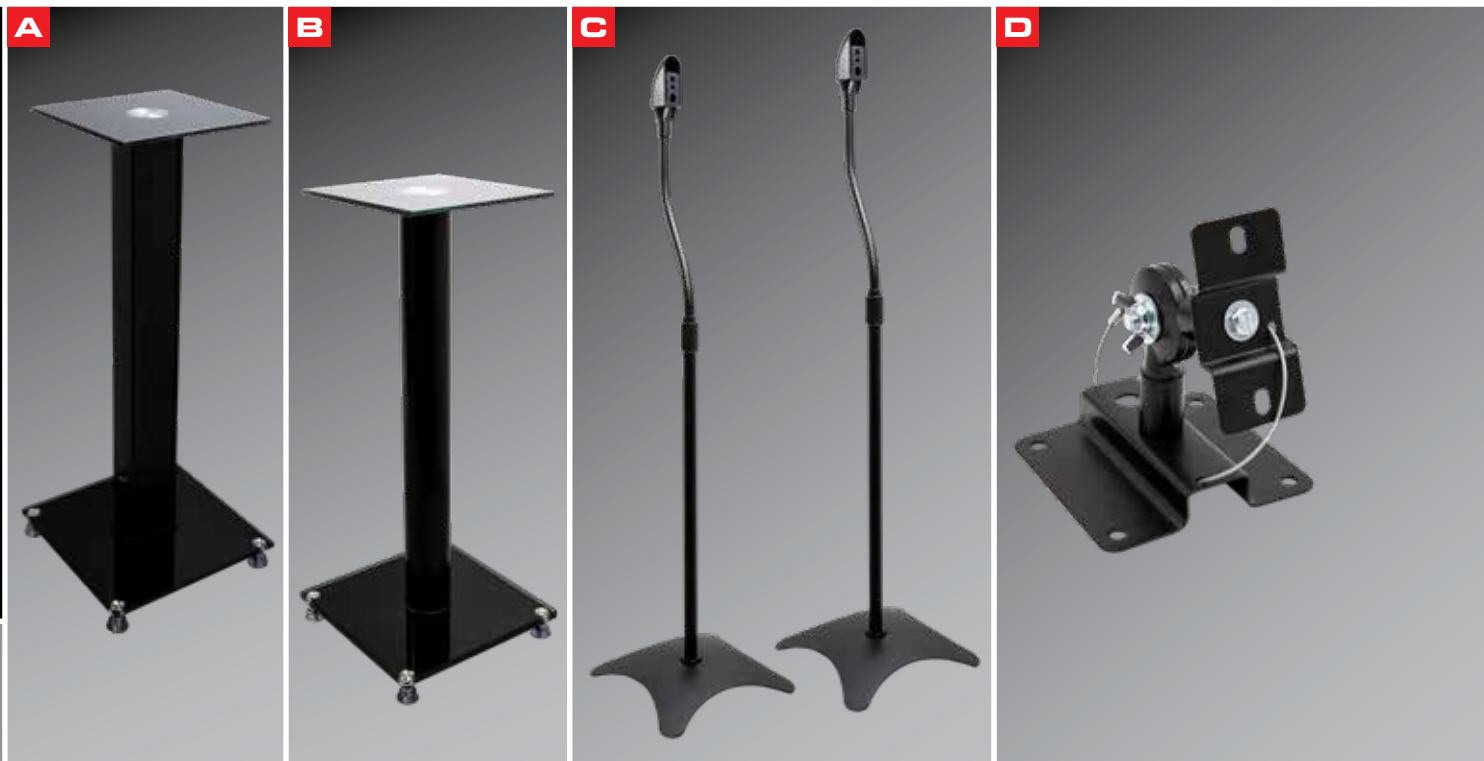
FML22

D

MOUNT ADAPTER BRACKET

- Convert mounts limited in VESA pattern support to support more options
- Mount this adapter to an existing 200x200 VESA mount and add 300x300 to 600x400 VESA mount capabilities

CS-2264ADPT



A

**BOOKSHELF
SPEAKER STAND**

- Supports up to 22 lbs
- 26" tall
- Material: Aluminum & tempered glass
- Square upright post
- Color: Black

AS-SPKR-5

B

**BOOKSHELF
SPEAKER STAND**

- Supports up to 22 lbs
- 26" tall
- Material: Aluminum & tempered glass
- Round upright post
- Color: Black

AS-SPKR-8

C

SATELLITE SPEAKER STAND

- Steel satellite speaker stand
- Supports up to 10 lbs
- 28.5"-42" adjustable
- Material: Steel
- Color: Black

AS-SPKR-11

D

ANTI-THEFT SPEAKER MOUNT

- Anti-theft speaker wall/ceiling mount
- Supports up to 33 lbs
- Material: Steel
- Color: Black

AS-SPKR-18

A



B



C



D



A

SMALL SPEAKER MOUNT

- Small speaker wall/ceiling mount
- Supports up to 7.7 lbs
- Material: Nylon
- Color: Black

AS-SPKR-19

B

SMALL SPEAKER MOUNT

- Small speaker wall mount
- Supports up to 7.7 lbs
- Material: Nylon
- Color: Black

AS-SPKR-20

C

MEDIUM SPEAKER MOUNT

- Medium speaker wall mount
- Supports up to 22 lbs
- Material: Steel & ABS
- Color: Black

AS-SPKR-24

D

BOOKSHELF SPEAKER WALL MOUNT

- Supports up to 33 lbs
- Material: Steel
- Color: Black

AS-SPKR-26



A
14" STRUCTURED PANE

- Grommets included
- Flexible mounting for stud spacing variations
- Recessed or surface mount
- Durable white powder coat finish
- Solid steel construction
- Includes mounts and 10 cable ties
- Door sold separately

CS-SP14

B
14" STRUCTURED PANEL DOOR

- Hinged metal door
- Lock & 2 keys included for added security
- Integrated louvered ventilation
- Can support up to (4) 120MM cooling fans with preset mounting holes for improved cooling
- Durable white powder coat finish
- Solid steel construction

CS-SPD14

C
20" STRUCTURED PANEL

- Grommets included
- Flexible mounting for stud spacing variations
- Recessed or surface mount
- Durable white powder coat finish
- Solid steel construction
- Includes mounts and 10 cable ties
- Door sold separately

CS-SP20

A



B



C



A

20" STRUCTURED PANEL DOOR

- Hinged metal door
- Lock & 2 keys included for added security
- Integrated louvered ventilation
- Can support up to (4) 120MM cooling fans with preset mounting holes for improved cooling
- Durable white powder coat finish
- Solid steel construction

CS-SPD20

B

28" STRUCTURED PANEL

- Grommets included
- Flexible mounting for stud spacing variations
- Recessed or surface mount
- Durable white powder coat finish
- Solid steel construction
- Includes mounts and 10 cable ties
- Door sold separately

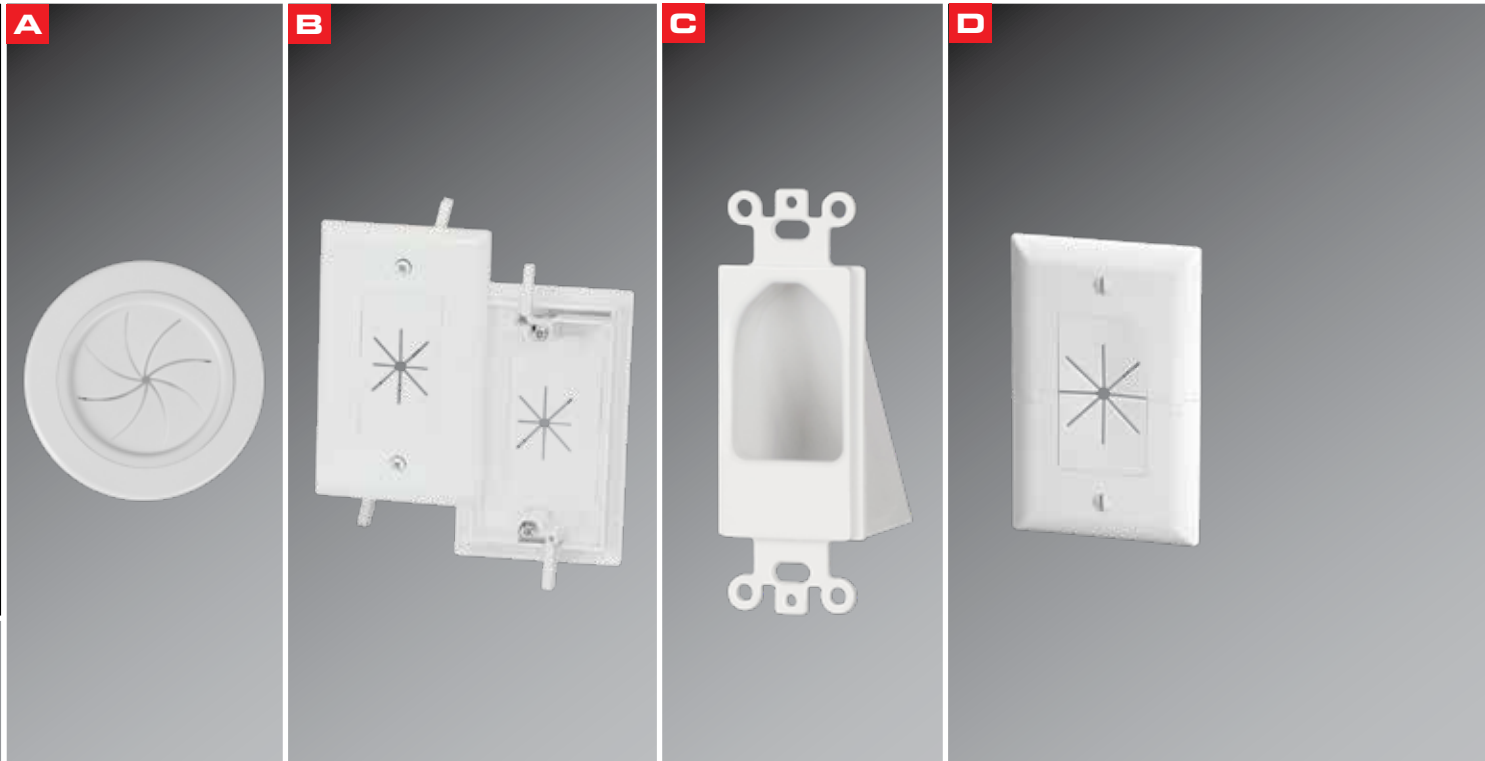
CS-SP28

C

28" STRUCTURED PANEL DOOR

- Hinged metal door
- Lock & 2 keys included for added security
- Integrated louvered ventilation
- Can support up to (4) 120MM cooling fans with preset mounting holes for improved cooling
- Durable white powder coat finish
- Solid steel construction

CS-SPD28



A
3" ACCESS PORT
 • Easy installation
 • Use 3" hole saw
CS-3RAP

C
REVERSE NOSE DÉCOR INSERT
 Use the Reverse Nose Décor Insert to install low voltage cables behind your HDTV, amplifier or other audio video devices. This insert is designed to be installed into a low voltage mounting bracket (sold separately) that is installed into the wall.
 • Low profile design fits behind thin mounts and TVs
 • Conceal multiple low voltage cables behind your HDTV
 • Easily holds up to 6 cables
 • Mounts flush with a décor style wall plate
 • Mounts to a standard low voltage mounting ring, old work ring
 • Allows internal cable management
 • Perfect for eliminating connections at the wall
 • Quick and easy install
45-0004-WH

B
CABLE PLATE - FLEXIBLE OPENING
 DataComm Electronics' patented Cable Plate with Flexible Opening is used to install low voltage cables behind your flat panel TV, your amplifier or other audio video devices. This cable plate allows you to pass low voltage cables through the wall, while keeping the opening in the wall covered. No low voltage mounting plate is required for installation; mounting wings are attached to the rear of the cable plate and fasten tightly against the back of drywall.
45-0014-WH

D
FLEXIBLE SPLIT PLATE
 • Allows additional cables without disconnecting existing cables
 • Installs onto a 1-gang low voltage mounting bracket
45-0017-WH

A



B



C



STRUCTURED WIRING

53

A

**PRO POWER KIT
W/ STRAIGHT BLADE
INLET**

- Recessed top plate with a 15 amp clock receptacle
- Recessed bottom plate with straight blade inlet
- Includes 2 outlet boxes, 6' of 16/s with ground electrical building wire, and wire nuts
- Quick and easy to install
- ETL listed

45-0023-WH

B

DÉCOR DUPLEX USB CHARGER

DataComm Décor Duplex 4.0A USB Charger with 15A/125V tamper resistant outlet. DataComm Electronics' Décor Duplex 4.0A USB Charger is designed to quickly and easily replace existing outlets allowing you to charge multiple devices at once without sacrificing power outlets. Simply connect the USB end of your device's charging cable into either of the USB ports, then connect the charging end of the cable to your smartphone, tablet, or other device.

- Use in residential applications
- Vertically positioned USB ports allow for more flexibility and reduce stress on USB cables
- Fits in a standard wallbox, is compatible with standard wallplates and can be multi-ganged with other devices
- Designed to easily replace existing outlets
- Compatible with USB 2.0 devices
- Fits in most major décor style wallplates
- 4.0 A total USB charging capacity (2.0 A per USB Port)
- Two 15 amp / 125 volt tamper-resistant receptacles
- ETL Listed

48-0204-WH

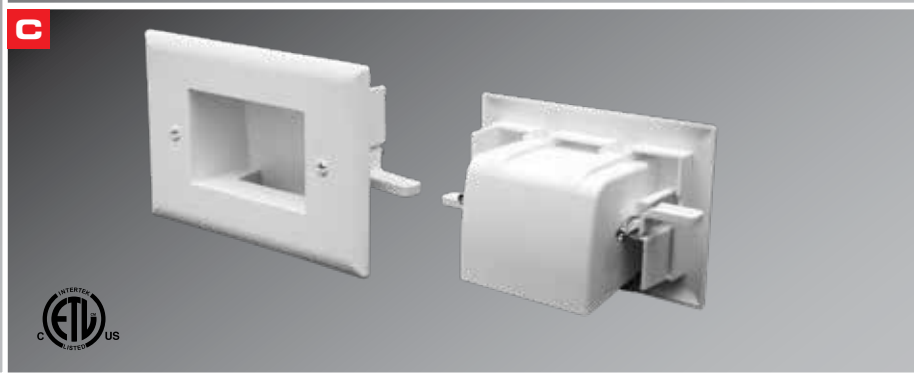
C

HOLE SAW PLATE

Small 2" square design intended for managing cables & hiding behind components

- Brush opening allows an HDMI® cable to fit through
- Metal mounting wings molded onto plate
- 1-piece design for use with 1.75" hole saw

45-0006-WH



A
**RECESSED MEDIA BOX II
 SURGE SUPPRESSOR**

UL Listed, 15 amp/125 volt Duplex Receptacle:

- Maximum surge current: 15,000 amps
- Clamping response time: 1 nanosecond
- Hot/Neutral, Hot/Ground, Neutral/Ground
- Total maximum surge dissipation: 480 joules
- ETL listed

45-0063-WH

B
**PRO POWER KIT
 W/ DUPLEX RECEPTACLE
 & STRAIGHT BLADE INLET**

- Tamper resistant, 15 amp/125 volt duplex receptacle included
- Mounting wings are attached to the back of the top and bottom plate to fasten against the drywall as you tighten down
- ETL listed

45-0024-WH

C
EASY MOUNT CABLE PLATE

- Mounting wings are molded onto the plate - no low voltage mounting bracket
- Designed for standard wall depth
- ETL listed

45-0008-WH

A



B



C



A

RECESSED LOW VOLT CBL PLATE/REC

This double gang recessed wall plate with cable management fits flush to the wall and includes a power outlet for low voltage in-wall cable management. Install behind your flat panel television or other audio/video equipment to direct low voltage cables behind walls. Install upright or upside down. ETL listed.

EDC-LVCP-WH

B

1-GANG PASS THROUGH

- 1-gang recessed low voltage
- White

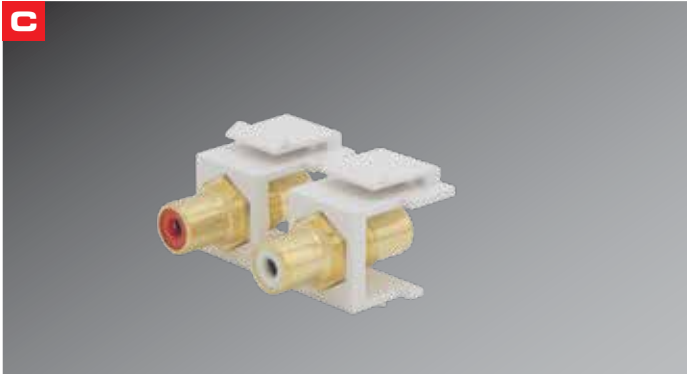
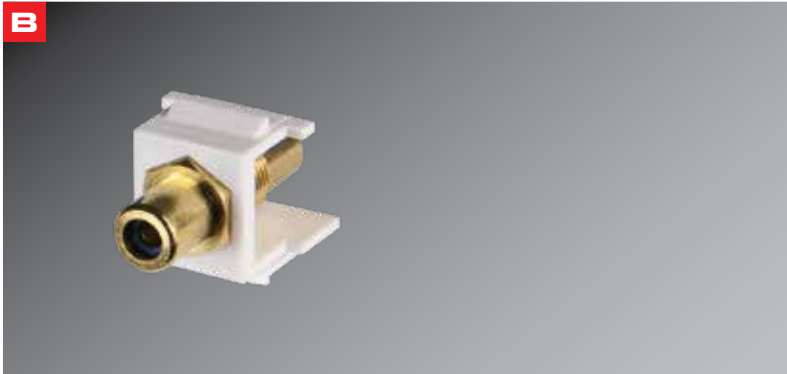
EDC-1GW

C

2-GANG PASS THROUGH

- 2-gang recessed low voltage
- White

EDC-2GW



A

CABLE PASS THROUGH PLATE

Streamline your wire management with this easy-to-install plate. Keep cables under control and avoid unsightly holes in the wall with this multi-cable port. For use with single-gang or multi-gang cable boxes, this plate keeps your excess cable out of sight for a professional look.

IHT-BULKSGLW

B

RCA TO F KEYSTONE INSERTS

- Female RCA to female F connection
- Gold-plated connectors
- Excellent signal fidelity
- Sold in two-packs
- Color: White

IHT-RCAFKSW

C

RCA COMPONENT KEYSTONE INSERT

This package of two female RCA to female RCA connection Keystone inserts are compatible with most Keystone wall plates, including the line of Keystone style wall plates (IHT-KEY). With one red and one white color coded connector, this set is coded for use with standard RCA audio cables.

IHT-RCAKSWA

D

3.5MM KEYSTONE INSERTS

- 3.5MM

5 PACK

- CS-KEY35-2C** 2 CONDUCTOR WHITE
- CS-KEY35-3C** 3 CONDUCTOR WHITE

A



B



C



A

HDMI® WALL PLATE

This Decora style plate features either one or two double-female ports designed to run an HDMI® audio/video source from a remote entertainment center to your HDTV. Constructed with 24K gold plated female HDMI® connectors, the IHT-HDMWP wall plates support high definition resolutions up to and including 1080p/3D, with maximum quality signal transfer.

IHT-HDMWPDBL **DOUBLE**

C

SPEAKER BINDING POST DECORA STYLE WALL PLATE

Available in 2, 4 and 8 port options, our Speaker Binding Post Wall Plates fit in a single-gang box or low-voltage mounting bracket and are easy to install. The white Decora style wall plates include color matched screws to maintain the high-end look of your installation. Spring loaded push terminals for easy connection.

IHT-SLBDPT2 **2 PORT**
IHT-SLBDPT4 **4 PORT**
IHT-SLBDPT8 **8 PORT**

B

HDMI® WALL PLATE WITH F CONNECTORS

- HDMI® pass thru
- F 81 pass thru

IHT-HDFWP



SPEAKER BINDING POST DECORA STYLE WALL PLATE

Available in 2, 4 and 8 port options, our speaker binding post wall plates fit in a single-gang box or low-voltage mounting bracket and are easy to install. The white Decora style wall plates include color matched screws to maintain the high-end look of your installation.

- IHT-BNDPSTX2** **2 PORT**
- IHT-BNDPSTX4** **4 PORT**
- IHT-BNDPSTX6** **6 PORT**
- IHT-BNDPSTX8** **8 PORT**
- IHT-BNDPSTX10** **10 PORT**

PREMIUM HOME THEATER PRODUCTS

Metra[®]
HOME THEATER GROUP

POWER

PREMIUM HOME THEATER PRODUCTS

Metra[®]
HOME THEATER GROUP

POWER

Helios Now Offers a New Look for Home Office Surge Protection Power Solutions

Dark or Light?

Giving customers an option in power product colors opens a new door for retailers. Color coordinate office and home decor with the new Helios power solutions product line, available in white with clean new packaging designs that complement the original black A/V product line colors. This brighter option has eye-catching white and black packaging to appeal to today's home office retail consumer.



CELEBRATING **70** YEARS OF INNOVATION
YEARS

Quality Products | Competitive Pricing | Award Winning Tech Support

Metra[®]
HOME THEATER GROUP

MetraHomeTheater.com 386.255.0234



© 2020 Metra Home Theater Group. All Rights Reserved.



SURGE + CONDITIONER

- 9 outlets total
- Integrated volt & current meters & LED indicators for grounding, protected & digital outlet status
- Free app for control of smart outlets
- 5 digital outlets (1 front always on and 4 rear individually controlled smart outlets)
- 2 switched analog outlets
- 2 switched high current outlets
- 1 USB type A & 1 USB type C, total 4.8A
- 2 pair coax surge protection
- (1) 12 volt DC trigger
- 2160 joules
- 120V/15A rated
- EMI/RFI 65 dB of shielding
- 8' power cable
- Includes ears for rack mounting
- UL listed
- Black and red packaging

AS-P-603W

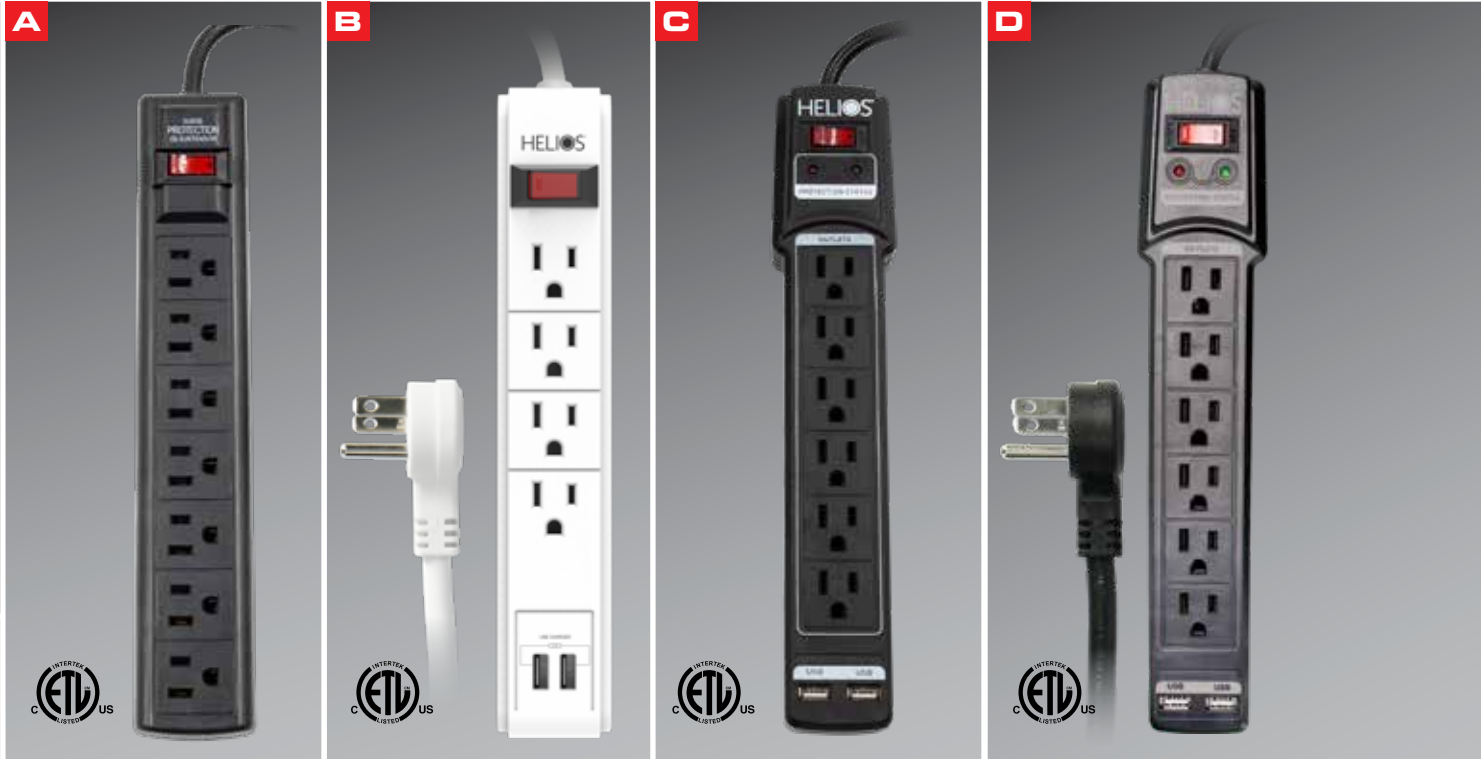


A
SURGE STRIP
 • 6 outlets
 • 4' power cord
 • UL listed
 • Black and red packaging
AS-LTS-6

B
SURGE STRIP
 • 6 outlets
 • 4' flat head power cable
 • UL listed
 • White and black packaging
AS-HLTS-6

C
SURGE STRIP
 • 3 A/C outlets
 • 2 USB 2.1A outlets
 • 900 joules
 • 4' power cable
 • ETL listed
 • Black and red packaging
AS-P-103U

D
SURGE STRIP
 • 4 outlets
 • 300 Joules
 • 1.5' power cable
 • ETL listed
 • Black and red packaging
AS-P-104



A
SURGE STRIP
 • 7 A/C outlets
 • 900 joules
 • 4' power cable
 • ETL listed
 • Black and red packaging

AS-P-107

B
SURGE STRIP
 • 4 outlets
 • 450 Joules
 • Two 2.1A USB ports
 • 6' flat head power cable
 • ETL listed
 • White and black packaging

AS-HP-204U

C
SURGE STRIP
 • 6 outlets
 • 1080 joules
 • Two 2.1A USB ports
 • 6' power cable
 • ETL listed
 • Black and red packaging

AS-P-206

D
SURGE STRIP
 • 6 outlets
 • 1080 Joules
 • Two 2.1A USB ports
 • 6' flat head power cable
 • ETL listed
 • White and black packaging

AS-HP-206U

A



C



B



D



A

WALL TAP

- 6 outlets
- 90° rotatable outlets
- Surge protection: up to 450 joules
- LED indicators
- ETL listed
- Black and red packaging

AS-P-6R

C

WALL TAP

- 5 outlets
- 90° rotatable outlets
- Surge protection: up to 450 joules
- 2 USB charging ports 2.1A
- LED indicators
- ETL listed
- Black and red packaging

AS-P-5R

B

WALL TAP

- 6 outlets
- 90° rotatable outlets
- Surge protection: up to 450 joules
- LED indicators
- ETL listed
- White and black packaging

AS-HP-6R

D

WALL TAP

- 5 outlets
- 90° rotatable outlets
- Surge protection: up to 450 joules
- 2 USB charging ports 2.1A
- LED indicators
- ETL listed
- White and black packaging

AS-HP-5R



A

SURGE STRIP

- 7 outlets
- 900 joules
- Cable: 14AWG 6'
- AC 15A 125V 60Hz 1875W
- ETL/CETL listed
- Black and red packaging

AS-P-207

B

SURGE STRIP

- 7 outlets
- Surge protection: up to 900 joules
- 6' flat head power cable
- ETL listed
- White and black packaging

AS-HP-207

C

SURGE STRIP

- 8 outlets
- Surge Protection: up to 2160 joules
- USB: DC5V 2.1A 2 USB
- Cable: 14AWG 6'
- AC 15A 125V 60Hz 1875W
- ETL/CETL listed
- Black and red packaging

AS-P-208U

A



B



C



A

SURGE STRIP

- 8 outlets
- 2160 joules
- Two 2.1A USB ports
- 6' flat head power cable
- ETL listed
- White and black packaging

AS-HP-208U

B

SURGE PROTECTION

- 12 outlets
- Surge protection: 3420 joules
- Coax protection
- Two 3.4A USB ports
- 6' power cable
- ETL listed
- Black and red packaging

AS-P-61200

C

SURGE PROTECTION

- 12 outlets
- 4050 joules
- 2 USB ports 2.1A
- Coax protection
- Flat head plug
- ETL listed
- White and black packaging

AS-HP-612004U



A
SURGE PROTECTION

- 3 outlets
- 900 joules
- 2 USB charging ports 3.1A
- ETL listed
- Black and red packaging

AS-P-3WTU

C
SURGE PROTECTION

- 2 outlets
- 245 joules
- 2 USB ports 2.1A
- ETL listed
- Black and red packaging

AS-P-2WTU

D
SURGE PROTECTION

- 4 outlets
- Five 2.4A USB ports (8A/40W maximum)
- 5' power cable
- ETL listed
- Black and red packaging

AS-P-25U

B
SURGE PROTECTION

- 3 outlets
- 900 joules
- 2 USB charging ports 3.1A
- ETL listed
- White and black packaging

AS-HP-3WTU

A



B



C



D



E



A

USB CHARGER

- One QC 3.0 USB quick charge port
- One 2.4A USB port
- UL listed
- Black and red packaging

AS-P-24U

B

CAR CHARGER

- 2 USB ports 3.1A
- Black and red packaging

AS-P-DC2U

C

AC TO USB POWER ADAPTOR

- AC to USB power adaptor
- 1A output
- UL listed

EHD-USBPWR

D

AC AND USB POWER WALL TAP

- 6 outlets
- 125V/15A electrical rating
- USB overload protection
- 1875 watt output
- ETL listed
- Black and red packaging

AS-P-6WTU

E

POWER RELOCATION

- Dual 110V outlets
- Relocate power and AV cables
- Tools, inwall and extension power cables included
- ETL listed

AS-PWRL0DBL



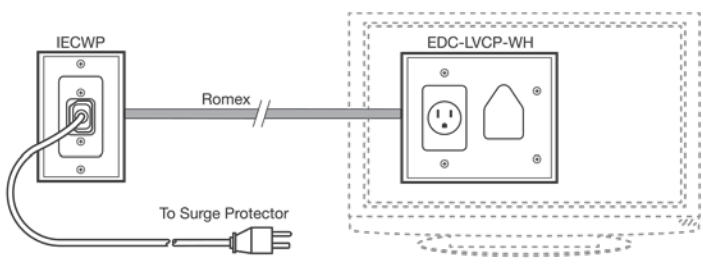
A
POWER RELOCATION
 Hide your wires and clean up your TV install

- Hole saw with t-handle
- 3M fish tape
- 2M extension power cable
- 2M extension power cable
- 2 each wall ports
- 3M in-wall power cable
- ETL listed

AS-PWRLOCATE

B
IEC WALL PLATE WITH PIGTAIL
 Fits flush to the wall and is the ideal solution for providing surge protected power to your flat screen TV or projector. Use this wall plate to connect to the EDC-LVCP behind your display.

IECWP



A



B



C



A

FIGURE 8 RIGHT ANGLE POWER CORD

- Straight to right angle (1-15P - C7P)
- UL listed

18 AWG

- CS-P188PSRA-1** 1M (3.28')
- CS-P188PSRA-2** 2M (6.56')
- CS-P188PSRA-4** 4M (13.12')

B

FIGURE 8 POWER CORD

- Straight to straight (1-15 - C7)
- UL listed

18 AWG

- CS-P188SS-1** 1M (3.28')
- CS-P188SS-2** 2M (6.56')

C

POLARIZED FIGURE 8 POWER CORD

- Straight to straight (1-15 - C7P)
- UL listed

18 AWG

- CS-P188PSS-1** 1M (3.28')
- CS-P188PSS-2** 2M (6.56')



A
**STRAIGHT TO RIGHT
 ANGLE IEC POWER CORD**

- UL listed

18 AWG

- CS-P18SRA-1** 1M (3.28')
- CS-P18SRA-2** 2M (6.56')
- CS-P18SRA-4** 4M (13.12')

B
**IEC EXTENSION
 POWER CORD**

- Straight to straight (C14 - C13)
- UL listed

18 AWG

- CS-P18SSS-1** 1M (3.28')

C
**STRAIGHT TO STRAIGHT
 IEC POWER CORD**

- Straight to straight (5-15 - C13)
- UL listed

18 AWG

- CS-P18SS-1** 1M (3.28')
- CS-P18SS-2** 2M (6.56')
- CS-P18SS-4** 4M (13.12')

PREMIUM HOME THEATER PRODUCTS

Metra[®]
HOME THEATER GROUP

SURVEILLANCE

PREMIUM HOME THEATER PRODUCTS

Metra[®]
HOME THEATER GROUP

SURVEILLANCE

OUR VERSATILE **SURVEILLANCE SYSTEMS** JUST GOT BETTER

SPYCLOPS
SURVEILLANCE SYSTEMS

Simple to Install Kits, Camera and DVR Options

Spyclops Surveillance Systems has IP cameras with wireless and POE options available! Designed to work with our versatile hybrid DVRs & NVRs. For a complete security solution, our 4 or 8 channel NVR kits will have everything needed in the box, including pre-terminated Ethernet cables. Pair with our new camera junction boxes and IP POE Cameras and you'll have an organized and clean installation.



No Monthly Fees

Store footage directly to the DVR hard drive use the **FREE Spyclops remote viewing app**. This flexibility allows installers to upsell additional storage space or maintenance plans based on customer needs.

CELEBRATING **70** YEARS OF INNOVATION
YEARS

Quality Products | Competitive Pricing | Award Winning Tech Support

Metra
HOME THEATER GROUP

Leading the Industry in Home Theater and Surveillance Solutions

Learn more at SpyclopsUSA.com 386.255.0234



4 CHANNEL 8MP SECURITY NVR



Free App for Remote Viewing



• Monitor not included

DVR

- Embedded LINUX operating system
- Free remote view app for Android™ and iOS®
- Image compression - H.265

RECORDING QUALITY

- 4 or 8 channels 8MP, 5MP, 4MP, 3MP, 2MP, 960P, 720P
- Up to 30 frames per second recording per channel

PLAYBACK QUALITY

- 1 channel 8MP, 5MP, 4MP, 3MP
- 4 channels 2MP, 960P, 720P
- Displays single, 4 or 8 cameras

HARDWARE

- HDMI® video output
- (1) audio output
- CAT6 network port
- SATA ports: (1) 1 TB HD included (supports 6 TB max)
- USB 2.0 ports (for USB backup and mouse)

Note: Network switch required

SPY-NVR45MP1

**4-CHANNEL SECURITY NVR
MONITOR NOT INCLUDED**

**ALSO AVAILABLE
WITH NO HARD DRIVE
PART # SPY-NVR45MPND**

- No HDD included
- Supports up to 6 TB



• Includes power supply, mouse and remote

8 CHANNEL 8MP SECURITY NVR



Free App for
Remote Viewing



• Monitor not included

DVR

- Embedded LINUX operating system
- Free remote view app for Android™ and iOS®
- Image compression - H.265

RECORDING QUALITY

- 4 or 8 channels 8MP, 5MP, 4MP, 3MP, 2MP, 960P, 720P
- Up to 30 frames per second recording per channel

PLAYBACK QUALITY

- 1 channel 8MP, 5MP, 4MP, 3MP
- 4 channels 2MP, 960P, 720P
- Displays single, 4 or 8 cameras

HARDWARE

- HDMI video output
- (1) audio output
- CAT6 network port
- SATA ports: (2) 1 TB HD included (supports 2 x 6 TB, 12 TB max)
- USB 2.0 ports (for USB backup and mouse)

Note: Network switch required

SPY-NVR85MP1

**8-CHANNEL SECURITY NVR
MONITOR NOT INCLUDED**

ALSO AVAILABLE WITH NO HARD DRIVE

PART # **SPY-NVR85MPND**

- No HDD included
- Supports up to 2 x 6 TB



• Includes power supply, mouse and remote

16 CHANNEL SECURITY NVR



Free App for Remote Viewing



• Monitor not included

DVR

- Embedded LINUX operating system
- Free remote view app
- Image compression - H.265

RECORDING QUALITY

- 16 channels 5MP, 4MP, 3MP, 2MP, 960P, 720P
- Up to 30 frames per second recording per channel

PLAYBACK QUALITY

- 2 channels 5MP, 4MP, 3MP
- 4 channels 2MP, 960P, 720P
- Displays single or 8 cameras

HARDWARE

- HDMI® video output
- (1) audio output
- CAT6 network port
- SATA ports: (2) 2 TB HD included (supports 2 x 4 TB, 8 TB max)
- USB 2.0 ports (for USB backup and mouse)

Note: Network switch required

SPY-NVR165MP1

**16-CHANNEL SECURITY NVR
MONITOR NOT INCLUDED**

ALSO AVAILABLE WITH NO HARD DRIVE PART # **SPY-NVR165MPND**

- No HDD included
- Supports up to 8 TB



• Includes power supply, mouse and remote

4/8 CHANNEL SECURITY NVR



Free App for Remote Viewing



• Monitors not included



• Includes power supply, mouse and remote



FEATURES

- 4-channel POE LAN ports connection
- HD 1080P recording resolution all cameras
- VGA and HDMI® outputs
- Free remote view app for Android™ and iOS®
- (1) drive bay supports up to 4 TB HDD
- 1 TB hard drive pre-installed
- ONVIF compliant

RECORDING QUALITY

- HD 1080p all channels

SPY-NVR4POE

4-CHANNEL SECURITY NVR MONITOR NOT INCLUDED

* AVAILABLE WITH NO HARD DRIVE AS *SPY-NVR4POEND*

HARDWARE

- (1) HDMI® port
- (1) VGA video output
- (4) POE LAN ports
- (1) WAN port
- (1) SATA port supports up to 1 x 4 TB)
- (2) USB 2.0 ports (for USB backup and mouse)

FEATURES

- 8-channel POE LAN ports connections
- 8MP 4K recording resolution all cameras
- VGA & HDMI® output
- Free remote view app for Android™ and iOS®
- (2) drive bays support up to 8 TB (2 x 4 TB)
- 1 TB hard drive pre-installed
- ONVIF compliant

RECORDING QUALITY

- 8MP 4K recording resolution all cameras

SPY-NVR8POE4K

8 CHANNEL 4K SECURITY NVR MONITOR NOT INCLUDED

* AVAILABLE WITH NO HARD DRIVE AS *SPY-NVR8POE4KND*

HARDWARE

- (1) HDMI® port
- (2) VGA video output
- (8) POE LAN ports
- (1) WAN port
- (2) SATA port (supports up to 2 x 4 TB)
- (2) USB 2.0 ports (for USB backup and mouse)

Note: No network switch required

4/8 CHANNEL POE NVR KITS



Free App for Remote Viewing



NVR FEATURES

- 4 or 8 channel POE LAN ports connection
- HD 1080P resolution all cameras
- VGA and HDMI® outputs
- Free remote view app for Android™ and iOS®
- 1 TB hard drive included

CAMERA FEATURES

- HD 1080P resolution
- 3.6MM fixed lens
- IR LEDs for night vision
- Auto 3D-DNR
- RJ45 POE connection
- IP66 rated for indoor/outdoor installations
- Includes 18M (59') pre-terminated CAT5 cables for each camera

Please Note this NVR kit is a closed system and is not compatible with other camera models and the included cameras are not compatible with other systems

SPY-NVR4POEKIT1

4-CHANNEL SECURITY NVR KIT
MONITOR NOT INCLUDED

SPY-NVR8POEKIT1

8-CHANNEL SECURITY NVR KIT
MONITOR NOT INCLUDED



- Includes power supply, mouse, remote and (4) or (8) 18M Cat5 cables

4/8 CHANNEL WIRELESS NVR KITS



WIRELESS NVR KIT

77

NVR FEATURES

- 4 or 8 channel wireless connection
- HD 720P resolution
- VGA and HDMI® outputs
- (1) WAN network port
- Free remote view app for Android™ and iOS®
- 1 TB hard drive included

CAMERA FEATURES

- 1/4" 3.6MM fixed lens
- Auto 3D-DNR
- RJ45 & WiFi 802.11b/g/n interface
- HD 720P resolution
- IP66 rated

Please Note this NVR kit is a closed system and is not compatible with other camera models and the included cameras are not compatible with other systems

SPY-NVR4720WB 4-CHANNEL SECURITY NVR KIT

SPY-NVR8720W 8-CHANNEL SECURITY NVR KIT



- Includes power supply and mouse

SPY-NVRWANT RANGE EXTENDING ANTENNA



Remotely locate your antenna to another location to get a better line of sight path for your wireless signal.
✓ Cable length: 3 meters (9.84')

4 CHANNEL 4 IN 1 HYBRID DVR



Free App for Remote Viewing



• Monitor not included

78

DVR

- Embedded LINUX operating system
- Image compression: H.264
- Supports analog 960H, AHD, TVI, CVI (1080P) & IP (up to 1080P) cameras

RECORDING QUALITY

- 1080P all channels (1920x1080)
- Up to 30 frames per second recording per channel

PLAYBACK QUALITY

- Plays back in recorded resolution
- Displays single camera or 4 camera

HARDWARE

- (1) HDMI® and (1) VGA video output
- (1) audio input / (1) audio output
- CAT6 network port
- RS485 port for PTZ cameras
- (1) SATA port - 1 TB HD included (supports 4 TB)
- (2) USB 2.0 ports (for USB backup and mouse)

SPY-DVR4HYB2 4 CHANNEL HYBRID DVR MONITOR NOT INCLUDED

ALSO AVAILABLE WITH NO HARD DRIVE

PART # **SPY-DVR4HYB2ND**

- No HDD included
- Supports up to 1 x 4 TB



• Includes power supply, mouse and remote

8 CHANNEL 4 IN 1 HYBRID DVR



Free App for
Remote Viewing



• Monitor not included

HYBRID DVR

79

DVR

- Embedded LINUX operating system
- Image compression: H.264
- Supports analog 960H, AHD, TVI, CVI (1080P) & IP (up to 1080P) cameras

RECORDING QUALITY

- 1080P all channels (1920x1080)
- Up to 30 frames per second recording per channel

PLAYBACK QUALITY

- Plays back in recorded resolution
- Displays single camera, 4 camera, or 8 camera view
- 4 channel maximum for simultaneous recorded playback

HARDWARE

- (1) HDMI® and (1) VGA video output
- (1) audio input / (1) audio output
- CAT6 network port
- RS485 port for PTZ cameras
- (2) SATA port - 1 TB HD included (supports up to 2 x 4 TB)
- (2) USB 2.0 ports (for USB backup and mouse)

SPY-DVR8HYB2

**8 CHANNEL HYBRID DVR
MONITOR NOT INCLUDED**

ALSO AVAILABLE WITH NO HARD DRIVE

PART # **SPY-DVR8HYB2ND**

- No HDD included
- Supports up to 2 x 4 TB



• Includes power supply, mouse and remote

16 CHANNEL 4 IN 1 HYBRID DVR



Free App for
Remote Viewing



• Monitor not included

80

DVR

- Embedded LINUX operating system
- Image compression: H.264
- Supports analog 960H, AHD, TVI, CVI (1080P) & IP (up to 1080P) cameras

RECORDING QUALITY

- Up to 1080P-H all channels (960x1080)
- TVI/AHD/Analog up to 15 frames per second per channel
- IP cameras up to 25 frames per second per channel

PLAYBACK QUALITY

- Plays back in recorded resolution
- Displays single camera, 4, 8 or 16 camera view
- 4 channel maximum for simultaneous recorded playback

HARDWARE

- (1) HDMI® and (1) VGA video output
- (2) audio inputs / (1) audio output
- (16) BNC connections
- Network port
- RS485 port for PTZ cameras
- (2) SATA ports 2 TB HDD included (supports up to 2 x 4 TB)
- (2) USB 2.0 ports (for USB backup and mouse)

SPY-DVR16HYB2

**16-CHANNEL HYBRID DVR
MONITOR NOT INCLUDED**

ALSO AVAILABLE WITH NO HARD DRIVE

PART # SPY-DVR16HYB2ND

- No HDD included
- Supports up to 2 x 4 TB



• Includes power supply, mouse and remote

A



B



C



A

AUTOFOCUS IP BULLET CAMERA

- ONVIF compliant IP camera
- 5X optical zoom/autofocus (f=2.7-13.5MM)
- 5MP CMOS sensor
- HISILICON DSP, wide dynamic range
- Main stream: 4MP@20fps, 3MP/1080P @ 30fps
- Built-in POE
- IP66 water-resistant with adjustable sunshade
- IR LEDs for up to 40M at night

SPY-BLTG3IP5AF GRAY
SPY-BLTW3IP5AF WHITE

C

MINI BULLET IP CAMERA

- ONVIF compliant IP camera
- 2.8 fixed lens
- 5MP CMOS sensor
- HISILICON DSP, wide dynamic range
- Main stream: 5MP/4MP@20fps/3MP/1080P @ 30fps
- Built in POE
- Adjustable sunshade
- IP66 water resistant
- IR LEDs for up to 30 meters at night

SPY-MNBLTGIP5 GRAY 5MP
SPY-MNBLTWIP5 WHITE 5MP

B

MANUAL VARIFOCAL IP BULLET CAMERA

- ONVIF compliant IP camera
- 2.8-12MM manual varifocal lens
- 5MP CMOS sensor
- HISILICON DSP, wide dynamic range
- Main stream: 4MP OR 5MP@20fps/3MP/1080P @ 30fps
- Built-in POE
- Adjustable sunshade
- IP66 water-resistant
- IR LEDs for up to 40M at night

SPY-BLTG3IP5 GRAY 5MP
SPY-BLTW3IP5 WHITE 5MP



A
WIFI MINI BULLET CAMERA

- ONVIF compliant
- 2.8MM fixed lens
- HISILICON DSP, wide dynamic range
- Main stream: 4MP@20fps/3MP/2MP/1080P@30fps
- Support WiFi up to 300M
- IP66 water-resistant
- IR LEDs for up to 30M at night

SPY-MNBLTWIP2W 2MP CMOS sensor
SPY-MNBLTWIP4W 4MP CMOS sensor

C
PAN/TILT/ZOOM CAMERA

- 5" HD-IP medium speed dome camera
- 6PCS IR LEDs, IR range: 60M
- 22X Optical Zoom (f=3.9-85.5MM)
- 2.1MP/1080P CMOS sensor
- Pan Range: 0°-360° continue; Tilt Range: 0°-93° flip
- Pan Speed: 45°/sec; Tilt Speed: 30°/sec
- Preset Points: 220
- Guard Tours: 3 groups | Guard Points: max 16 points
- TCP/IP, HTTP, FTP, RTSP support
- ONVIF compliant
- IP66 water-resistant
- Power: Internal POE
- Lightning Protection: Transient voltage 6000V

SPY-PTZWIP3

B
MINI BULLET IP CAMERA

- ONVIF compliant IP camera
- 4MM fixed lens
- Sony Starvis back-illuminated 8MP CMOS sensor
- HISILICON DSP, wide dynamic range
- Main Stream: 8MP@15fps, 6/5/4/1080P@30fps
- Built-in POE
- IP66 water-resistant
- IR LEDs for up to 20M at night

SPY-MNBLTWIP8

D
PAN/TILT/ZOOM CAMERA

- HD-IP Pan/Tilt/Zoom bullet camera
- 4PCS Array IR LEDs + 2PCS Laser Lamp , IR Range: 100M
- 5X Optical Zoom (f=2.7-13.5MM)
- 5MP CMOS sensor
- Pan Range: 0°-200°, Pan Speed: 30°/sec
- Tilt Range: -45°-40°, Tilt Speed: 25°/sec
- Preset Points: 220
- Guard Tours: 3 groups | Guard Points: max 16 points
- TCP/IP, HTTP, FTP, RTSP support
- ONVIF compliant
- IP66 water-resistant
- Power: Internal POE
- Lightning Protection: Transient voltage 6000V

SPY-PTZBWIP5

A



B



C



D



A

MANUAL VARIFOVAL DOME CAMERA

- ONVIF compliant
- 2.8-12MM manual varifocal lens
- 5MP CMOS sensor
- HISILICON DSP, wide dynamic range
- Main stream: 5MP/4MP@20fps/3MP/1080P@30fps
- Built-in POE
- IP66 water-resistant
- IR LEDs for up to 30M at night

SPY-DOMEGIP5 GRAY 5MP

SPY-DOMEWIP5 WHITE 5MP

B

MINI DOME CAMERA

- ONVIF compliant
- 2.8MM fixed lens
- 5MP CMOS sensor
- HISILICON DSP, wide dynamic range
- Main stream: 5MP/4MP@20fps/3MP/1080P@30fps
- Built-in POE
- IP66 water-resistant
- IR LEDs for up to 20M at night

SPY-MNDMGIP5 GRAY 5MP

SPY-MNDMWIP5 WHITE 5MP

C

MINI DOME IP CAMERA

- ONVIF compliant IP camera
- 4MM fixed lens
- Sony Starvis back-illuminated 8MP CMOS sensor
- HISILICON DSP, wide dynamic range
- Main Stream: 8MP@15fps, 6/5/4/1080P@30fps
- Built-in POE
- IP66 water-resistant
- IR LEDs for up to 20M at night

SPY-MNDMWIP8

D

DOME SECURITY CAMERA

- ONVIF compliant IP camera
- 5X optical zoom/autofocus (f=2.7-13.5MM)
- 5MP CMOS sensor
- HISILICON DSP, wide dynamic range
- Main stream: 4MP@20fps, 3MP/1080P@30fps
- Built-in POE
- IP66 water-resistant
- IR LEDs for up to 30 meters at night

SPY-DOMEGIP5AF GRAY

SPY-DOMEWIP5AF WHITE



A

MINI BULLET CAMERA

- 3.6MM lens for wide view
- Sony 2.4MP CMOS sensor
- 1080P resolution
- IP66 water-resistant
- IR LEDs for up 20M at night
- 4-in-1 compatible with TVI/AHD/CVI/CVBS

SPY-MNBLTG4N124 GRAY
SPY-MNBLTW4N124 WHITE

B

MANUAL VARIFOVAL BULLET CAMERA

- 2.8-12MM manual varifocal lens
- Sony 2.1MP CMOS sensor
- 1080P resolution
- IP66 water-resistant
- IR LEDs for up 60M at night
- 4-in-1 compatible with TVI/AHD/CVI/CVBS

SPY-BLTG34N124 GRAY
SPY-BLTW34N124 WHITE

C

LOW PROFILE DOME STYLE CAMERA

- Low profile dome camera
- 3.6MM lens for wide view
- Sony 2.4MP CMOS sensor
- 1080P resolution
- Indoor use only
- 12 IR LEDs for up to a 20M distance in darkness
- OSD provides more camera adjustment settings
- 4-in-1 compatible with TVI/AHD/CVI/CVBS

SPY-LPDM4N124

A



4in1
TVI/AHD/
CVI/CVBS



B



4in1
TVI/AHD/
CVI/CVBS



A

MINI DOME CAMERA

- 2.8MM lens for ultra wide view
- Sony CMOS sensor
- 1080P resolution
- IP66 water-resistant
- 18 IR LEDs for up to a 20M distance in darkness
- 4-in-1 compatible with TVI/AHD/CVI/CVBS

SPY-MNDMG4N124 GRAY

SPY-MNDMW4N124 WHITE

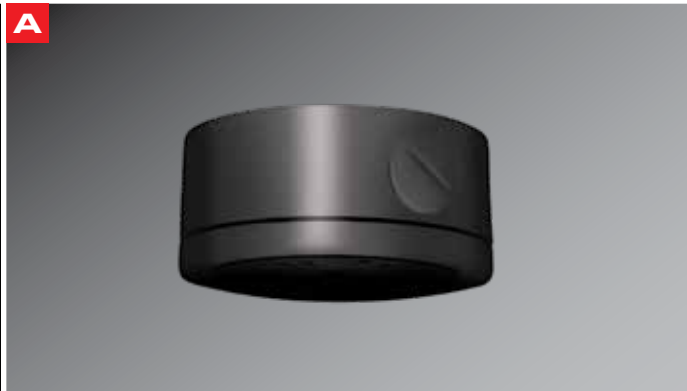
B

MANUAL VARIFOCAL DOME CAMERA

- 2.8-12MM varifocal lens
- Sony 2.4MP CMOS sensor
- 1080P resolution
- IP66 water-resistant
- 36 IR LEDs for up 30M at night
- 4-in-1 compatible with TVI/AHD/CVI/CVBS

SPY-DOMEG4N124 GRAY

SPY-DOMEW4N124 WHITE



A
SMALL JUNCTION BOX
• Designed for use with all mini size dome & bullet Spyclops cameras
SPY-JB310G GRAY

B
LARGE JUNCTION BOX
• Designed for use with all full size dome & bullet Spyclops cameras
SPY-JB320G GRAY

C
SMALL JUNCTION BOX
• Designed for use with all mini size dome & bullet Spyclops cameras
SPY-JB310W WHITE

D
LARGE JUNCTION BOX
• Designed for use with all full size dome & bullet Spyclops cameras
SPY-JB320W WHITE

A

B

C

D



A

5-WAY POWER DISTRIBUTION BOX

- 110 volt to 12 volt, 5 amp power supply
- Lockable door - includes two keys
- Status LED is on when 12 volt power supply is ON; LED is off when there is no power from the power supply
- 1 amp PTC fuses protect the cameras/power supply
- Removable power connections make wiring cameras easier
- Rubber grommets included to run wires through knockouts on top and side of power supply box

SPY-DB5W5A

B

9-WAY POWER DISTRIBUTION BOX

- 110 volt to 12 volt, 10 amp power supply
- Lockable door - includes two keys
- Status LED is on when 12 volt power supply is ON; LED is off when there is no power from the power supply
- 1 amp PTC fuses protect the cameras/power supply
- Removable power connections make wiring cameras easier
- Rubber grommets included to run wires through knockouts on top and side of power supply box

SPY-DB9W10A

C

18-WAY POWER DISTRIBUTION BOX

- 110 volt to 12 volt, 20 amp power supply
- Lockable door - includes two keys
- Status LED is on when 12 volt power supply is ON; LED is off when there is no power from the power supply
- 1 amp PTC fuses protect the cameras
- Removable power connections make wiring cameras easier
- Rubber grommets included to run wires through
- Knockouts on top and side of power supply box

SPY-DB18W20A

D

12 VOLT POWER SUPPLY

- 110 volt to 12 volt, 1 amp power supply
- Ideal to power a single camera
- UL listed
- 1M (3.28') cable length

SPY-PS12V1A



A
4 FEMALE TO 1 MALE 12V DC SPLITTER

- 16" length
- Connect up to 4 cameras to one power supply
- Can also be used with LED lighting

SPY-SPLIT4

8 FEMALE TO 1 MALE 12V DC SPLITTER

- 16" length
- Connect up to 8 cameras to one power supply
- Can also be used with LED lighting

SPY-SPLIT8

16 FEMALE TO 1 MALE 12V DC SPLITTER

- 16" length
- Connect up to 16 cameras to one power supply
- Can also be used with LED lighting

SPY-SPLIT16

B
VIDEO CABLE WITH BNC & 12V CONNECTIONS

- All-in-one cable for cleaner installation
- Use with all Spyclops coax cameras
- Available in 20', 30' & 40'

SPY-*20*30*40MBNDCDC

C
12 VOLT FEMALE DC PIG TAIL

- 6" length
- Same power plug included with Spyclops cameras

SPY-12VC10PK (10 pack)

D
BALUN CAT 5 TO BNC WITH 12V DC

- Use Cat 5/6 to connect cameras to DVR
- Run up to 100M in length
- Receiver side of balun has BNC pigtail to fit into tight spaces behind DVR
- 568-B Cat 5/6 termination recommended

SPY-CAT5BNC12V

E
PASSIVE CCTV BNC HD VIDEO BALUN

- UTP screw terminal to BNC pigtail
- Compatible with standard analog (960H) & HD CCTV video signals
- Analog (960H) up to 1475' (450M)/AHD/CV/TVI 720P up to 984' (300M)/AHD/CVI/TVI 1080p up to 656' (200M)
- Wire type: unshielded twisted pair 24-16AWG (0.5-1.31MM)
- Frequency response: DC-6MHz
- Rejection: 15KHz-6MHz 60dB
- Impedance: BNC 75ff terminal 100ff
- Operation temp: 14° F to 122° F (10°C - 50°C)
- Operation humidity: 0-95%

SPY-BNCBAL (2 pack)

F
POWER SUPPLY

- 12volt 6 amp power supply

HE-PS6 Not UL listed **HE-PS6UL** UL listed



ADAPTERS &
ACCESSORIES

PREMIUM HOME THEATER PRODUCTS

Metra[®]
HOME THEATER GROUP

A**A****HDMI® COUPLER**

A great adapter when you need to connect two HDMI® cables.

IHT-HDMCP**B****C****B****HDMI® RIGHT ANGLE DOWN ADAPTER**

A great adapter when installing flat panel TVs in tight places, or for today's ultra thin TVs that leave little room for cables.

AS-HDMRAD**C****HDMI® RIGHT ANGLE UP ADAPTER**

A great adapter when installing flat panel TVs in tight places, or for today's ultra thin TVs that leave little room for cables.

AS-HDMRAU



A
ETHEREAL BANANA PLUGS
10 PACK

- Female - large banana plug
- 5 red - 5 black

WBAN

B
BANANA PLUGS

- Gold plated

- CS-BAN1** ENTRY LEVEL - 2 PACK
- CS-BAN2** MID LEVEL - 2 PACK
- CS-BAN2-2PR** MID LEVEL - 4 PACK
- CS-BAN3** PREMIUM LEVEL - 2 PACK
- CS-BAN3-2PR** PREMIUM LEVEL - 4 PACK
- CS-BANRA** RIGHT ANGLE - 2 PACK
- CS-BAN4-50** TOP COVER - 50 PACK

C
DOUBLE BANANA PLUGS

- Gold plated

- CS-DBANRG** RED
- CS-DBANBG** BLACK

D
3.5MM MALE TO 1/4" FEMALE

- Stereo
- Nickel plated

CS-ADPT35SMQISF



A
1/4" MALE TO 3.5MM FEMALE

- Stereo
- Nickel plated

CS-ADPTQISM35SF
CS-QISM35SF-4PK 4 PACK

B
1/4" MALE TO RCA MONO FEMALE

- Stereo
- Nickel plated

CS-ADPTQISRCA

C
**(2)RCA FEMALE TO
 (2)RCA FEMALE**

- Stereo
- Barrel (connects four RCA cables together)
- Nickel plated

CS-ADPTRCADBLBR
CS-RCADBLBR-4PK 4 PACK

D
S VIDEO FEMALE TO RCA MALE

- Video adapter
- Nickel plated

CS-SFRCAM

E
3.5MM MALE TO RCA FEMALE

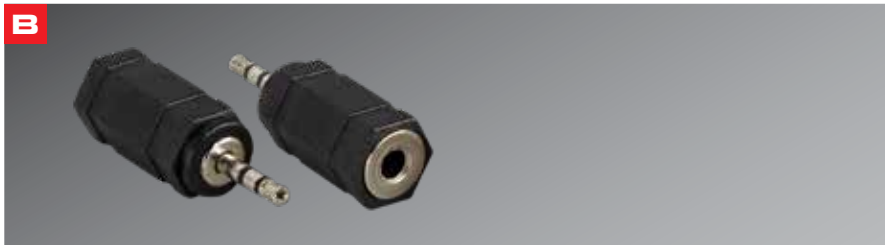
- Stereo

CS-35RCAF1 3 FT
CS-35RCAF2 6 FT

F
3.5MM MALE TO RCA MALE

- 2 meter

CS-35RCAM2



A
3.5MM FEMALE TO 3.5MM FEMALE
 • Stereo
 • Barrel (connects to 3.5mm cables together)
 • Nickel plated
CS-35SBARREL
CS-35SBARREL4PK 4 PACK

B
1/4" MALE TO (2) RCA MALE
 • Stereo
 • Nickel plated
CS-ADPQISMRCASM

C
2.5MM MALE TO 3.5MM MALE
 • Stereo
 • Nickel plated
CS-ADPT25SM35SF

D
3.5MM MALE TO 2.5MM FEMALE
 • Stereo
 • Nickel plated
CS-ADPT35SM25SF

E
3.5MM MALE TO RCA FEMALE
 • Stereo
 • Nickel plated
CS-ADPT35SRCAM

F
3.5MM MALE TO (2) RCA FEMALE
 • Stereo
 • Nickel plated
CS-ADPT35SRCAS

A**B****C****D****E**

93

A**1/4" MALE TO 1/4" FEMALE**

- Stereo
- Nickel plated

CS-ADPTQISMQISF**B****RCA FEMALE TO RCA FEMALE**

- Barrel (connects two RCA cables together)
- Nickel plated

CS-ADPTRCAMRCAM**C****3.5MM MALE TO
(2) 3.5MM FEMALE**

- Stereo
- Splitter

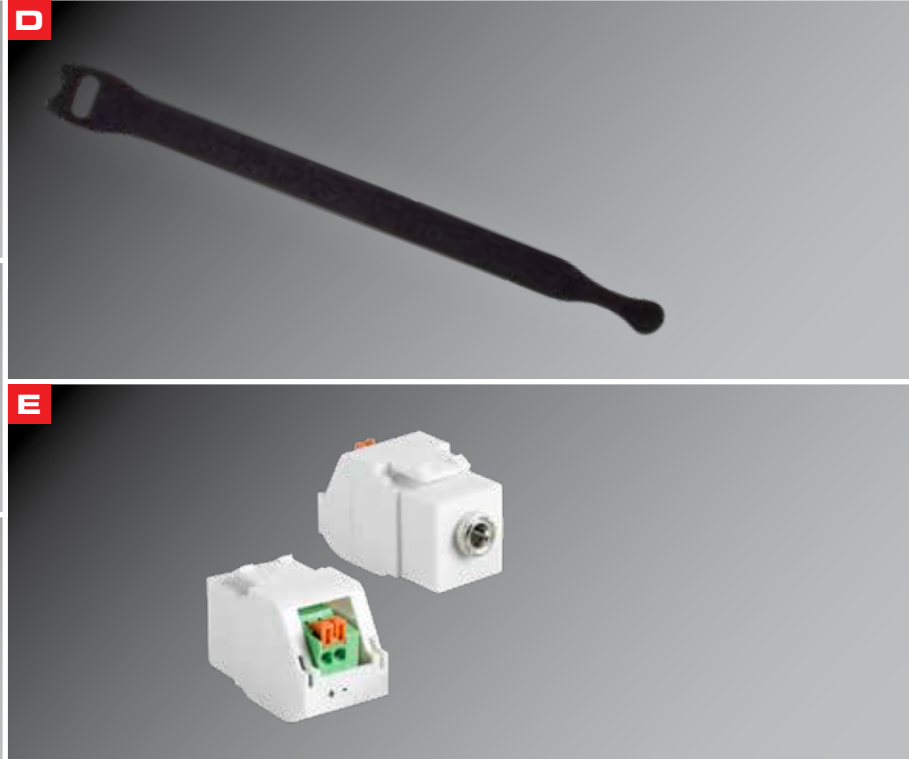
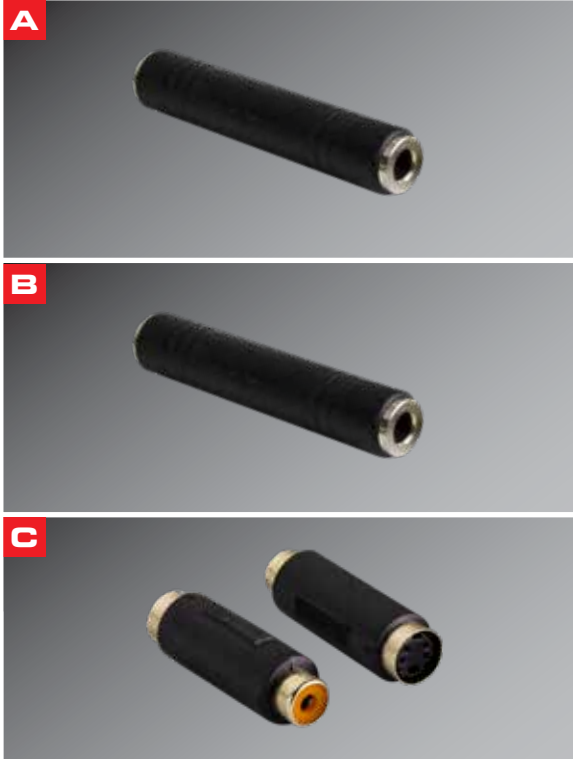
CS-ADPT35SSPLIT**D****(1) RCA MALE TO (2)RCA MALE**

- Splitter
- Nickel plated

CS-ADPTRCASPLIT**E****3.5MM STEREO MINI BREAK OUT**

- 3-pin break out
- For use with infrared

EHT-3-5SBO



A
1/4" FEMALE TO 1/4" FEMALE
 • Mono
 • Barrel (connects two 1/4" cables together)
 • Nickel plated
CS-QIMBARREL

B
1/4" FEMALE TO 1/4" FEMALE
 • Stereo
 • Barrel (connects two 1/4" cables together)
 • Nickel plated
CS-QISBARREL

C
S VIDEO FEMALE TO RCA FEMALE
 • Video adapter
 • Nickel plated
CS-SFRCAF

D
VELCRO WRAP
50PK ROLL
CS-WRAPBLK BLACK 8"

E
3.5MM KEYSTONE INSERTS
 • 3.5MM
5 PACK
CS-KEY35-2C 2 CONDUCTOR WHITE
CS-KEY35-3C 3 CONDUCTOR WHITE

**CONNECTORS
& TOOLS**

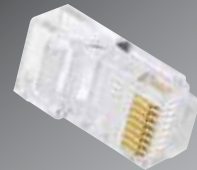
PREMIUM HOME THEATER PRODUCTS

Metra[®]
HOME THEATER GROUP

CONNECTORS
& TOOLS

PREMIUM HOME THEATER PRODUCTS

Metra[®]
HOME THEATER GROUP

A**B****C****G****D****E****F****H****I**

CONTRACTOR SERIES UNIVERSAL TERMINATIONS

Incorporating ease of termination, durability and a true 75 ohm architecture. The RG/6 and the RG/59 Universal BNC, RCA and F terminations are the choice for the best in high quality terminals at a moderate price.

A

RG6 F CONNECTOR

50 PACK

CS-CCRG6F BRASS

100 PACK

CS-CCRG6F-E ZINC**B**

RG6 QUAD CONNECTOR

50 PACK

CS-CCRG6QF

10 PACK

CS-CCRG6QF-10**C**

RG6 RCA CONNECTOR

50 PACK

CS-CCRG6RCA

RG6 RCA

10 PACK

CS-CCRG6RCA-10**D**

RG59 RCA CONNECTOR

50 PACK

CS-CCRG59RCA**E**

RG59 BNC CONNECTOR

50 PACK

CS-CCRG59BNC**F**

RG6 BNC CONNECTOR

50 PACK

CS-CCRG6BNC**G**

CAT TERMINATIONS

50 PACK

C5T CAT5**C6T** CAT6**H**

SHIELDED CAT6 8P8C RJ45'S FOR SHIELDED CAT6 CABLE

100 PACK

• Shielded CAT6 8P8C RJ45's

• For shielded CAT6 cable

C6T-SH**I**

CAT6A TERMINATIONS

10 PACK

• Tool free design

• 10GBaseT support

C6ATTf-10



A

COMPRESSION TOOL

Flexibility is the hallmark of the CS-COMPTOOL. Working with our CS Series Coax Compression Terminations as well as the vast majority of other brands, the CS-COMPTOOL comes complete with the tips necessary for terminating BNC, RCA and F Connectors.

CS-COMPTOOL

B

COAX CABLE STRIPPER

This is a great coax stripping tool. With an interchangeable stripping blade and multiple cutting surfaces, the CS-STRIP is a great choice for your field terminations.

CS-STRIP

C

DUAL-MODULAR CRIMPING TOOL

- For 8P8C/RJ45, 6P6C/RJ-12 & 6P4C/RJ-11 connectors
- Cuts
- Strips
- Crimps terminations

CS-CRIMPTOOL

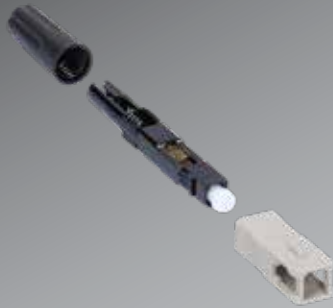
D

3" HOLE SAW

- Includes guide bit and locking collar
- Use on: Natural wood, hardwood, plywood, chip-board-raw, veneered and laminated, fiber reinforced composites, sandwich materials, plastics, or thin sheet metals. Use with our CS-3RAP.

CS-3HS

A



B



C



D



A

**OM3 CONNECTORS
SC 50/125**

- Quick connect design allows for incredibly easy fiber termination
- Pack of 10

CS-FBRSCCT

B

**OM3 CONNECTORS
LC 50/125**

- Quick connect design allows for incredibly easy fiber termination
- Pack of 10

CS-FBRLCT

C

**FIBER CLEAVER
HIGH PRECISION**

- Fully adjustable
- Integrated waste container for safe handling of fiber scraps

CS-FBRCLVR

D

**FIBER STRIPPER TOOL
HIGH QUALITY**

- 3-stage stripping
- Soft grip handles
- Adjustable cutting diameter

CS-FBRSTRPR



A

**FIBER KEVLAR SCISSORS
HIGH QUALITY**

- Easily cuts through Kevlar fibers
- Soft grip handles
- A must have fiber preparation tool

CS-FBRSCSR

B

**FIBER VISUAL FAULT LOCATOR
HIGH QUALITY**

- High precision laser to detect damage to fiber cabling
- Compatible with SC and other connectors
- Requires optional adapter for use with LC connectors

CS-FBRVFL

C

**ADAPTER
LC FEMALE TO SC MALE**

- Adapter used for testing LC terminated cable with visual fault locator

CS-FBRLCFSCM

PREMIUM HOME THEATER PRODUCTS

BULK WIRE

Metra[®]
HOME THEATER GROUP

PREMIUM HOME THEATER PRODUCTS

Metra[®]
HOME THEATER GROUP

BULK WIRE

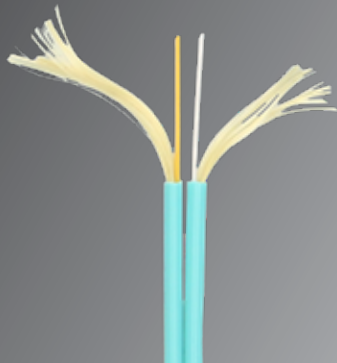
A



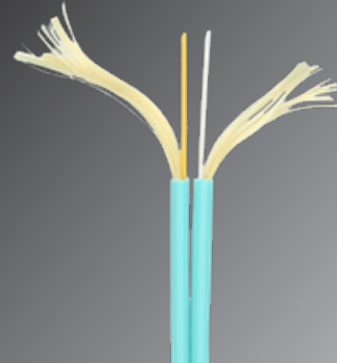
C



B



D



**A OM3 SIMPLEX FIBER
MULTI-MODE**

- 3.0mm diameter
- Easy pull reel in box
- 1000' (305m)
- OFNR Riser-rated

FBR-SOM3-OFNR

**C OM3 SIMPLEX FIBER
MULTI-MODE**

- 3.0mm diameter
- Easy pull reel in box
- 1000' (305m)
- OFNP Plenum-rated

FBR-SOM3-OFNP

**B OM3 DUPLEX FIBER
MULTI-MODE**

- 3.0mm diameter X2
- Easy pull reel in box
- 1000' (305m)
- OFNR Riser-rated

FBR-DOM3-OFNR

**D OM3 DUPLEX FIBER
MULTI-MODE**

- 3.0mm diameter X2
- Easy pull reel in box
- 1000' (305m)
- OFNP Plenum-rated

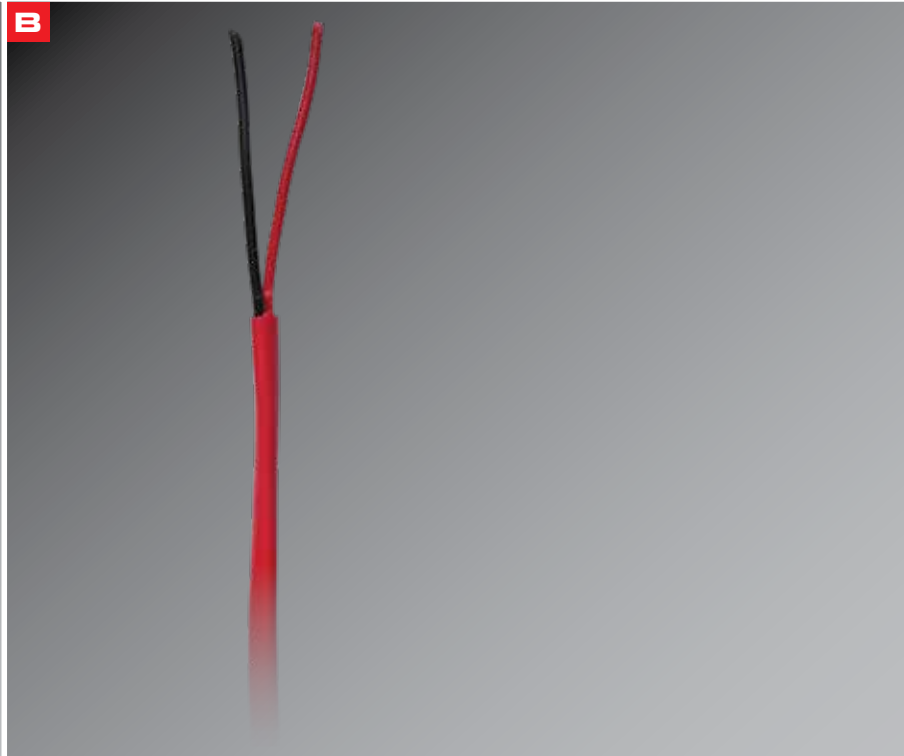
FBR-DOM3-OFNP

* Call for additional fiber options

BULK SPEAKER WIRE

BULK WIRE

100



A

BULK SPEAKER WIRE

- 12-2C-T** 500' REEL WHITE
14-2C 105 Strand, Oxygen Free
- 14-2C-BW** 500' BOX WHITE
14-2C 105 Strand, Oxygen Free
- 14-2C-BBK** 500' BOX BLACK
14-2C 105 Strand, Oxygen Free
- 14-2C-DB** 500' REEL BLACK
14-2C Direct Burial
- 14-2C-DB-250** 250' REEL BLACK
14-2C Direct Burial
- 14-4C-BBK** 500' BOX BLACK
14-4C 105 Strand, Oxygen Free
- 14-4C-BW** 500' BOX WHITE
14-4C 105 Strand, Oxygen Free
- 14-4C-DB** 500' BOX BLACK
14-4C Direct Burial
- 14-4C-DB-250** 250' BOX BLACK
14-4C Direct Burial
- 16-2C-B-1000-BK** 1000' BOX BLACK
16-2C 65 Strand, Oxygen Free
- 16-2C-B-BLK** 500' BOX BLACK
16-2C 65 Strand, Oxygen Free

- 16-2C-BG-500** 500' BOX GREEN
16-2, 26/30 SR CMR, Oxygen Free
- 16-2C-BW** 1000' BOX WHITE
16-2C 65 Strand, Oxygen Free
- 16-2C-BW-500** 500' BOX WHITE
16-2C 65 Strand, Oxygen Free
- 16-2C-BW-DB** 1000' BOX BLACK
16-2C 65 Strand, Oxygen Free,
- 16-2C-BW-HD** 500' BOX WHITE
16-2C 65 Strand, Oxygen Free, Heavy Duty
- 16-2C-W-PL** 1000' REEL WHITE
16-2C Plenum, Oxygen Free
- 16-4C-BW** 500' BOX WHITE
16-4C 65 Strand, Oxygen Free
- 16-4C-BW-BK** 500' BOX BLACK
16-4C 65 Strand, Oxygen Free
- 16-4C-BW-DB** 500' BOX WHITE
16-4C Direct Burial, Oxygen Free,
- 16-4C-BW-HD** 500' BOX WHITE
16-4C 65 Strand, Oxygen Free, Heavy Duty
- 16-4C-BW-OR** 500' BOX ORANGE
16-4C 65 Strand, Oxygen Free

B

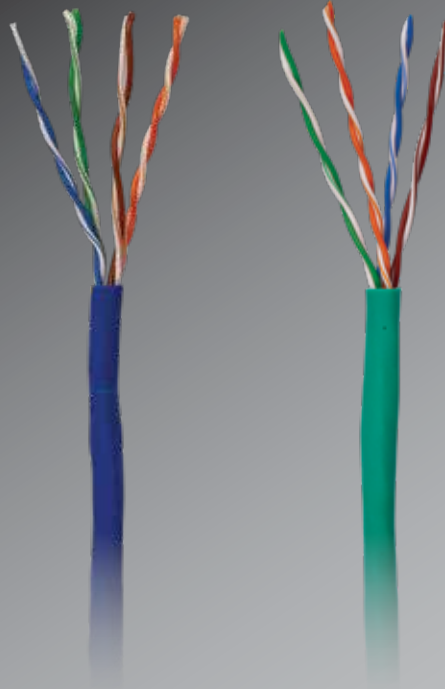
18-2 SECURITY WIRE

- 18-2-SD-FWR** 1000' REEL WHITE
18-2 C Solid UL
- 18-2-SD-WH-T** 500' REEL WHITE
18-2 C Solid T-Stat
- 18-2C-1000-GRY** 1000' REEL GREY
18-2 C Stranded

A



B



BULK WIRE

101

A

22-2/22-4 SECURITY WIRE

- 22-2-SR-GR** 500' BAG GREEN
22-2 Stranded CMR
- 22-2-SR-GY** 500' BAG GREY
22-2 Stranded CMR
- 22-2-SR-WH-500** 500' BAG WHITE
22-2 Stranded
- 22-2-SR-WH500-R** 500' BAG WHITE
22-2 Stranded CMR
- 22-2-SR-YL-500** 500' BAG YELLOW
22-2 Stranded CMR
- 22-4-SR-WH** 500' BAG WHITE
22-4 Stranded CMR
- 22-4-SR-RGBB-BK** 500' BAG BLACK
22-4 Stranded Red-Green-Blue-Black

- 22-4-SD-B** 500' BAG BLUE
22-4 Stranded
- 22-4-SD-FWR1000** 1000' REEL YELLOW
22-4 Solid UL FPLR
- 22-4-SD-FWR-500** 500' REEL YELLOW
22-4 Solid UL FPLR
- 22-4-SD-GR** 500' BAG GREEN
22-4 Solid
- 22-4-SD-GY** 500' BAG GREY
22-4 Solid
- 22-4-SD-WH** 500' BAG WHITE
22-4 Solid

B

CAT5 BULK WIRE

- CAT5E350-B-500** 500' BOX BLUE
24-4 Pair Cat5, 350MHz
- CAT5E350-BK-R** 1000' BOX BLACK
24-4 Pair Cat5, 350MHz CMR
- CAT5E350-B-R** 1000' BOX BLUE
24-4 Pair Cat5, 350MHz CMR
- CAT5E350-BRN** 1000' BOX BROWN
24-4 Pair Cat5, 350MHz
- CAT5E350-G-R** 1000' BOX GREY
24-4 Pair Cat5, 350MHz CMR
- CAT5E350-GR-R** 1000' BOX GREEN
24-4 Pair Cat5, 350MHz CMR
- CAT5E350-OR-R** 1000' BOX ORANGE
24-4 Pair Cat5, 350MHz CMR
- CAT5E350-PNK-R** 1000' BOX PINK
24-4 Pair Cat5, 350MHz CMR

- CAT5E350-RD** 1000' BOX RED
24-4 Pair Cat5, 350MHz
- CAT5E350-V** 1000' BOX VIOLET
24-4 Pair Cat5, 350MHz
- CAT5E350-W-R** 1000' BOX WHITE
24-4 Pair Cat5, 350MHz CMR
- CAT5E350-Y-R** 1000' BOX YELLOW
24-4 Pair Cat5, 350MHz CMR
- CAT5E350-DB** 1000' BOX BLACK
24-4 Pair Cat5, 350MHz, Direct Burial
- CAT5E350-SH-GR** 1000' BOX GREEN
24-4 Pair Cat5, 350MHz, Shielded
- CAT5E350-SH-GY** 1000' BOX GREY
24-4 Pair Cat5, 350MHz, Shielded
- CAT5E350-SH-Y** 1000' BOX YELLOW
24-4 Pair Cat5, 350MHz, Shielded



A

CAT6 BULK WIRE

- CAT653-GR-R** 1000' BOX GREEN
23-4 Pair Cat6, 550MHz CMR
- CAT6-BK-R** 1000' BOX BLACK
23-4 Pair Cat6, 550MHz CMR
- CAT6-B-R** 1000' BOX BLUE
23-4 Pair Cat6, 550MHz CMR
- CAT6-GR-R** 1000' BOX GREEN
23-4 Pair Cat6, 550MHz CMR
- CAT6-GY-R** 1000' BOX GREY
23-4 Pair Cat6, 550MHz CMR
- CAT6-OR-R** 1000' BOX ORANGE
23-4 Pair Cat6, 550MHz CMR
- CAT6-W-R** 1000' BOX WHITE
23-4 Pair Cat6, 550MHz CMR
- CAT6-R-R** 1000' BOX RED
23-4 Pair Cat6, 550MHz CMR
- CAT6-Y-R** 1000' BOX YELLOW
23-4 Pair Cat6, 550MHz CMR
- CAT6-500-BO** 500' BOX BURNT ORANGE
23-4 Pair Cat6, 550MHz CMR
- CAT6-SIAM-B1000** 1000' REEL BLUE
CAT6 X2CM
- CAT6-DB** 1000' REEL BLACK
23-4 Pair Cat6, Direct Burial

- CAT6-BK-SH** 1000' REEL BLACK
Cat6 Shielded CMR
- CAT6-GR-SH** 1000' REEL GREEN
Cat6 Shielded CMR
- CAT6-R-SH** 1000' REEL RED
Cat6 Shielded CMR
- CAT6-SH** 1000' REEL BLUE
Cat6 Shielded CMR
- CAT6-W-SH** 1000' REEL WHITE
Cat6 Shielded CMR

B

CAT6A BULK WIRE

- CAT6A-B-BX** 1000' BOX BLUE
23-4 Pair Cat6A, UTP, 600MHz
- CAT6A-GR-BX** 1000' BOX GREEN
23-4 Pair Cat6A, UTP, 600MHz
- CAT6A-GY-BX** 1000' BOX GREY
23-4 Pair Cat6A, UTP, 600MHz
- CAT6A-R-BX** 1000' BOX RED
23-4 Pair Cat6A, UTP, 600MHz
- CAT6A-W-BX** 1000' BOX GREEN
23-4 Pair Cat6A, UTP, 600MHz
- CAT6A-Y-BX** 1000' BOX YELLOW
23-4 Pair Cat6A, UTP, 600MHz

A



BULK WIRE

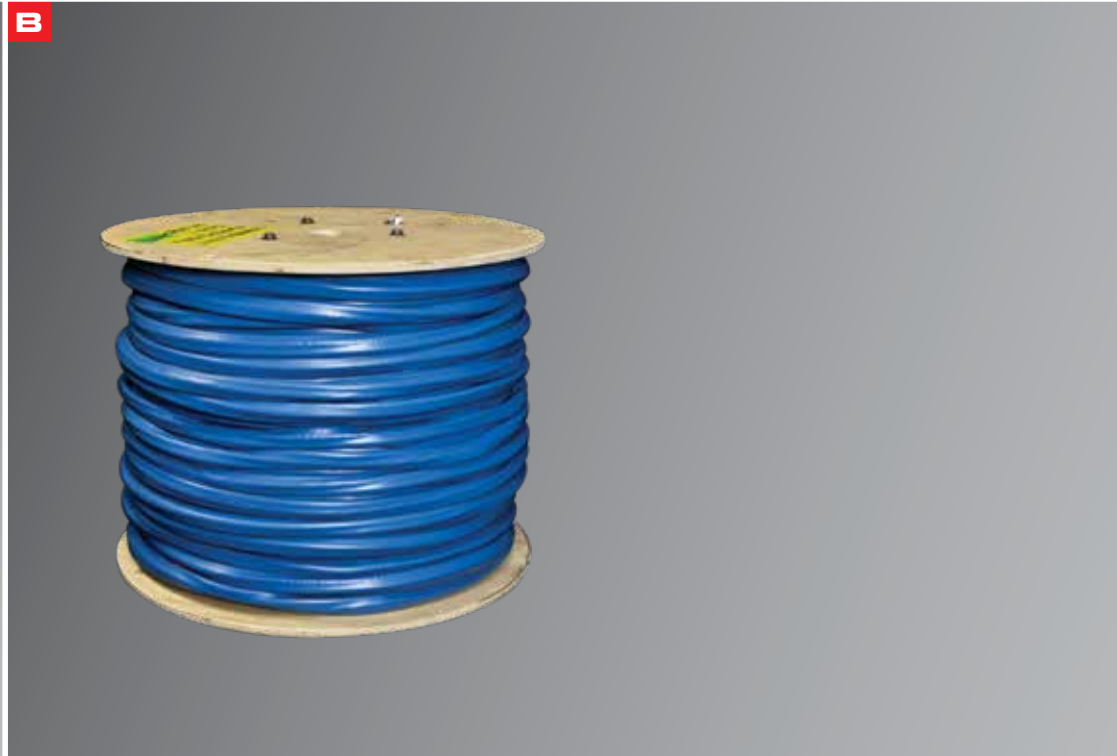
103

A

COAX BULK WIRE

- RG6BC** 1000' REEL BLACK
RG6 Dual BC + 60% Braid 100% Foil, 3.0GHz
- RG6BC-B-500** 500' BOX BLACK
RG6 Dual BC + 60% Braid 100% Foil, 3.0GHz
- RG6BC-BW** 1000' BOX WHITE
RG6 Dual BC + 60% Braid 100% Foil, 3.0GHz
- RG6BC-BW-500** 500' BOX WHITE
RG6 Dual BC + 60% Braid 100% Foil, 3.0GHz
- RG6BC-W** 500' BOX WHITE
RG6 Dual BC + 60% Braid 100% Foil, 3.0GHz
- RG6CCS** 1000' BOX BLACK
RG6 Dual CCS
- RG6Q-BW** 1000' BOX WHITE
RG6 Quad CCS, 3.0GHz CL2
- RG6Q-BW** 500' BOX WHITE
RG6 Quad CCS, 3.0GHz CL2
- RG6Q-B** 1000' BOX BLACK
RG6 Quad CCS, 3.0GHz CL2
- RG6Q-B-100** 100' BOX BLACK
RG6 Quad CCS, 3.0GHz CL2
- RG6Q-B-250** 250' BOX BLACK
RG6 Quad CCS, 3.0GHz CL2
- RG6Q-B-50** 50' BOX BLACK
RG6 Quad CCS, 3.0GHz CL2

- RG6Q-B-500** 500' BOX BLACK
RG6 Quad CCS, 3.0GHz CL2
- RG6Q-BC** 1000' REEL BLACK
RG6 Quad BC, 3.0GHz
- RG6Q-BC-B** 1000' BOX BLACK
RG6 Quad BC, 3.0GHz
- RG6Q-BC-BW** 1000' BOX WHITE
RG6 Quad BC, 3.0GHz
- RG6Q-BC-W** 1000' REEL WHITE
RG6 Quad BC, 3.0GHz
- RG6Q-DB** 1000' BOX
RG6 Quad BC, 3.0GHz Direct Burial



A

BULK CCTV WIRE

RG59+18-2C 500' BOX
RG59 BC/BC 95% Copper Braid + 18-2C
RG59CCA+18-2C 500' BOX
RG59 CCA + 18-2C

B

BULK COMBO CABLE

2+2-CAT6 500' REEL
2 X RG6 QUAD + 2 X CAT6
* COLORS MAY VARY



PREMIUM HOME THEATER PRODUCTS

Metra[®]
HOME THEATER GROUP

HELIOS

PREMIUM HOME THEATER PRODUCTS

Metra[®]
HOME THEATER GROUP

HELIOS

A

GREAT FOR GAMING!



24 GBPS
4x6GBPS

4K 60

eARC

4K HDR

B



24 GBPS
4x6GBPS

DPI4K

4K 60

eARC

4K HDR

C



24 GBPS
4x6GBPS

DPI4K

4K 60

eARC

4K HDR

D



24 GBPS
4x6GBPS

eARC

4K HDR

HELIOS® CABLES

105

A VALUE SERIES: GOOD BETTER BEST

**HDM AOC SERIES
HIGH SPEED HDMI CABLE**

The Helios® Active Fiber Cables create a whole new level of value and performance with the 18 Gbps HDMI 2.0 specifications. The AS-HDAOC do things a little differently than your typical fiber cable. They use an ultra-energy efficient Rx/Tx chipsets they do not need any added external power which allows for a cleaner and simpler installation. Robust head shell and jacket designs also help to make for a better install by protecting the cable and its built-in electronics. Perfect for zero latency gaming

AS-HDAOC3	3FT	AS-HDAOC9	9FT
AS-HDAOC6	6FT	AS-HDAOC15	15FT

C VALUE SERIES: GOOD BETTER BEST

**2000 SERIES
FLAT HDMI CABLE**

Premium HDMI® quality in a smaller package. The flat cables are designed for easy installation to route with today's intricate wall mounts for a "hidden wire" look. These high speed cables fully support 4K/60*, 3D, ethernet & audio return.

AS-HDM-2003	3FT	AS-HDM-2013*	13FT
AS-HDM-2006	6FT	AS-HDM-2019*	19FT
AS-HDM-2010*	10FT		

B VALUE SERIES: GOOD BETTER BEST

**HDM18 SERIES
HIGH SPEED HDMI CABLE**

HDMI® High Speed cable designed for HD connections utilizing displays with 4K/60* capability for superior high definition picture and sound. These high speed cables fully support 18Gbps, 4K/60 12bit, dual view, 3D, 48bit deep color, 32 audio channels, ethernet & audio return.

AS-HD18-3	3FT	AS-HD18-12*	12FT
AS-HD18-6	6FT		

D VALUE SERIES: GOOD BETTER BEST

HD VIDEO CABLE

- 4k/60 resolution 18Gbps 3D ready
- Supports HDCP2.2
- Digital audio high speed ethernet

ASH-HDM803	3FT
ASH-HDM806	6FT
ASH-HDM806	12FT



A VALUE SERIES: GOOD BETTER BEST

DIGITAL COAX CABLE

- Color-coded
- Easy grip terminals
- Braided

BRAIDED
AS-D-2006 6FT

B VALUE SERIES: GOOD BETTER BEST

OPTICAL DIGITAL AUDIO CABLE

Providing a simple one cable connection for digital audio, the Helios Toslink cable is a great way to get the best possible sound through an optical digital audio cable. Color-coded, easy-grip terminals simplify hook up.

BRAIDED
AS-T-2003 3FT
AS-T-2006 6FT
AS-T-2013 13FT

C VALUE SERIES: GOOD BETTER BEST

SUBWOOFER CABLE

Providing a simple one cable connection for subwoofers. Color-coded, easy-grip terminals simplify hook up.

BRAIDED
AS-S-2006 6FT
AS-S-2010 10FT
AS-S-2016 16FT
AS-S-2019 19FT

D VALUE SERIES: GOOD BETTER BEST

STEREO AUDIO CABLES

Color-coded, easy-grip terminals simplify hook up along with matching adapters for splitting signals or to use with MP3 devices.

NON-BRAIDED
AS-A-1003 3FT
AS-A-1006 6FT
AS-A-1013 13FT

**All HELIOS Cables Carry a Limited Lifetime Warranty*



A

DISPLAYPORT 1.4 CABLE

- Supports video resolutions up to 8K:
 - 8K - 7680x4320 @ 60Hz, 10-bit color, RGB 4:4:4, HDR, DSC
 - 4K - 3840x2160 @ 120Hz, 10-bit color, RGB 4:4:4, HDR
 - 2K - 2560x1440 @ 60Hz, 120Hz, 144Hz, 165Hz
 - HD - 1920x1080 @ 60Hz, 120Hz, 144Hz, 165Hz
- Zero latency for exceptional picture quality and sound
- Supports highest quality audio pass-through for uncompressed digital 7.1, 5.1 or 2 channels
- Connects GTX video graphics card to 165Hz gaming monitor
- Supports multi-monitor configuration with the Display Port 1.4 cable; Backwards compatible with DisplayPort 1.2 cable and USB C to DisplayPort adapter for laptops with USB-C or Thunderbolt 3
- Compatible with PCs and some Apple products with DisplayPorts support version 1.4.
- High-quality construction with gold plated connectors, bare copper conductors, individual wire insulation and shielding
- Plug-and-play ready

AS-P-3003 3FT **AS-P-3006** 6FT **AS-P-3009** 9FT

B

OPTICAL DIGITAL RIGHT ANGLE ADAPTOR

This optical digital right angle adaptor is designed and engineered to deliver the dynamics and subtleties of your music. This handy right angle adaptor gives you flexibility in tight places making sure your optical digital cable is routed where you need it without damaging the cable.

AS-ADPT-TRA

C

ACTIVE TOSLINK SPLITTER

- Digital optical audio splitter
- Splits one input signal to three SPDIF/Toslink output signals
- Supports LPCM2.0/DTS/Dolby-AC3 audio
- Supports signal retiming
- Uses fiber optic cable
- Over-voltage protection
- Plug-and-play ready

AS-1X3TSPLIT

D

ADAPTER CABLES

- AS-ADPT-35RCA** 3.5MM PLUG TO RCA - 6 FT
- AS-ADPT-Y1** 1 MALE - 2 FEMALE
- AS-ADPT-Y2** 2 MALE - 1 FEMALE



A

BLUETOOTH® RECEIVER

The AS-BTR converts Bluetooth® audio to analog stereo giving you the ability to turn any audio system with analog inputs into a Bluetooth® speaker system.

Functions & Features:

- Play high quality music wirelessly without cables
- Wide applications with the ability to receive stereo music from mobile devices, PC's and other devices with Bluetooth® functions
- Connect speakers with 3.5mm audio inputs converting ordinary speakers to wireless Bluetooth® speakers instantly
- Auto-connect after first connection
- Power supplied by USB interfaces including a computer USB port and other power supplies that are compatible with USB
- 10 meters (32.8') Bluetooth® wireless connection distance in typical home and office applications and up to 20 meters (65.6') line of sight without any obstructions
- Compact size like a matchbox and easy to carry

AS-BTR

B

HDMI® SWITCHES

- HDMI® switch with 5 inputs and 1 output
- Supports 480i/576i/480p/576p/720p/1080i/1080P resolutions
- Supports control with IR

AS-HDM-5X1SW 5 SOURCES

C

COMPONENT TO HDMI® CONVERTER

- YPbPr (component) video + L/R audio to HDMI® converter
- The Helios component to HDMI® converter allows older analog devices to be integrated seamlessly into the modern home theater

CS-CVHDM

A



B



C



D



A

COMPOSITE VIDEO TO HDMI® CONVERTER

- Composite video + L/R audio A/V to HDMI® converter
- Selectable 720P & 1080P outputs
- Powered by USB

CS-AVHDM

B

HDMI® TO COMPOSITE VIDEO CONVERTER

- HDMI® to composite video + L/R audio A/V converter
- Powered by USB

CS-HDMAV

C

HDMI® TO VGA AND 3.5MM STEREO AUDIO CONVERTER

- Powered by USB

CS-HDMVGA

D

VGA & 3.5MM STEREO AUDIO TO HDMI® CONVERTER

- Powered by USB

CS-VGAHDM



A

USB POWERED IR EXTENDER

Keep your A/V devices hidden without sacrificing control

- 6' USB IR receiver with LED feedback supports 20-60kHz frequencies
- (4) compact IR emitters with 3' extension cables
- Easily powered with television's USB port or use separate USB power

AS-IRUSB4

B

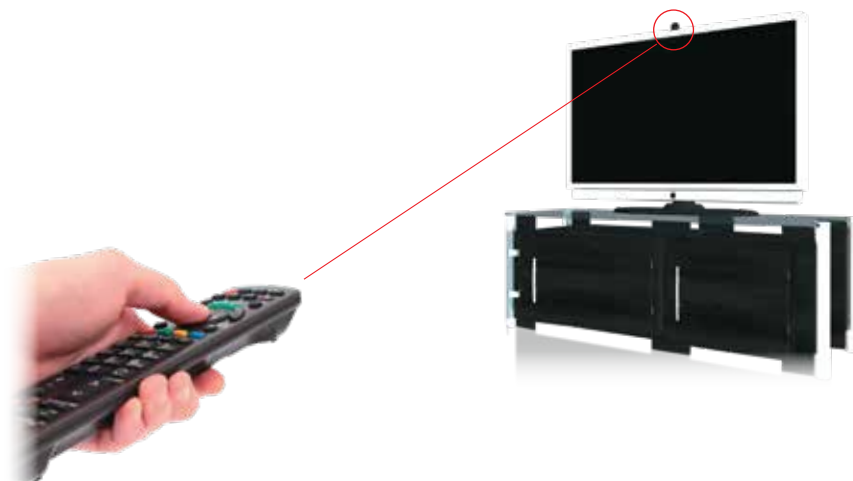
INFRA-RED KIT

Hide AV equipment and take control of up to 8 devices with Helios' new plasma-proof IR kit.

The AS-IRKIT includes:

- (1) IR repeater hub
- (1) IR receiver
- (4) dual IR emitters (30-60kHz)
(1) 1M & (3) 2M
- 1 AC adapter

AS-IRKIT



A**B****A**

LOW PROFILE 4 ZONE SPEAKER SELECTOR

- Route speaker cables from each listening zone to the speaker selector
- Route speaker cables from the amplifier to the speaker selector
- Remove approximately 8 inches of the outer jacket from the speaker cable (if necessary)
- Strip approximately 3/8 inches of insulation from each conductor and twist the exposed strands together to avoid fraying
- Press the push terminal and insert the conductor; release to make contact
- Set impedance protection to ON and OFF as necessary

AS-SS4**B**

LOW PROFILE 6 ZONE SPEAKER SELECTOR

- Route speaker cables from each listening zone to the speaker selector
- Route speaker cables from the amplifier to the speaker selector
- Remove approximately 8 inches of the outer jacket from the speaker cable (if necessary)
- Strip approximately 3/8 inches of insulation from each conductor and twist the exposed strands together to avoid fraying
- Press the push terminal and insert the conductor; release to make contact
- Set impedance protection to ON and OFF as necessary

AS-SS6

A



B



A

MEDIUM SINGLE STUD FULL-MOTION MOUNT

- Fits TV's 26" - 60"
- Tilting angle: +5°/-15°
- Extension: 64-484MM (2.5" - 19.1")
- Swivel angle: +90°/-90°/-
- Weight capacity: 66 lbs.
- VESA compliant: 100x100, 200x100, 200x200, 200x400, 400x200, 400x400
- Single stud installation
- All steel construction
- All hardware & mounting level included
- Durable black powder coat finish
- UL listed
- Replaces FM2642

FMM44

B

FULL MOTION MOUNT

- Fits TV's 32" - 65"
- Tilt angle: +5°/-15°
- Swivel angle: +/-45°
- Adjustable center position for pivot arm
- Weight Capacity: 75 lbs.
- VESA compliant: 200x200 - 600x400
- Heavy gauge steel
- All hardware & mounting level included

FML64PL

A



B



A

LARGE FULL MOTION SIDE EXTENSION MOUNT

- Fits TV's 42"- 85"
- Tilting angle: +5°/-15°
- Extension: 80-550MM (3.2"- 21.7")
- Swivel angle: +90°/-90°/-
- Weight capacity: 132 lbs.
- VESA compliant: 100x100, 200x100, 200x200, 400x200, 400x400, 600x400
- Dual stud installation with 16" or 24" on center studs
- All steel construction
- All hardware & mounting level included
- Durable black powder coat finish
- UL listed
- Replaces FM2260

FML64S

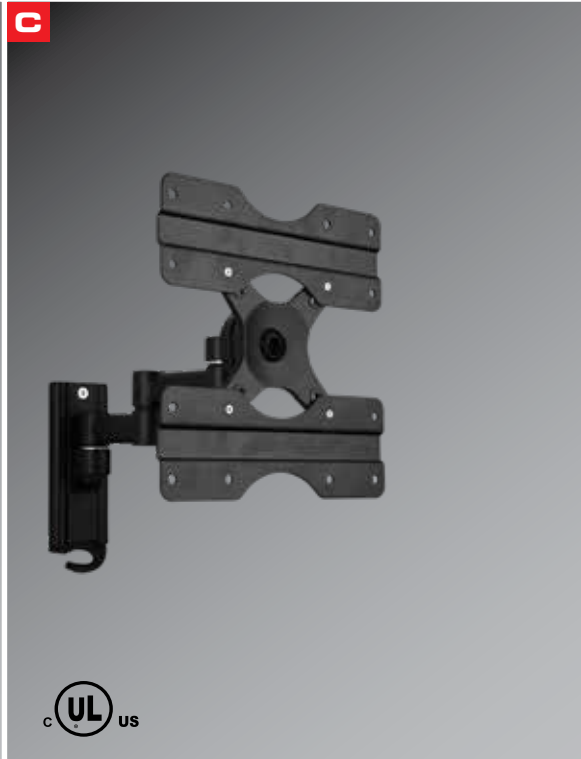
B

LARGE FULL MOTION CENTER EXTENSION MOUNT

- Fits TV's 42"- 85"
- Tilting angle: +5°/-15°
- Extension: 70-470MM (2.8"- 18.5")
- Swivel angle: +45°/-45°/-
- Weight capacity: 132 lbs.
- VESA compliant: 200x200, 400x200, 400x400, 600x400
- Dual stud installation with 16" or 24" on center studs
- All steel construction
- All hardware & mounting level included
- Durable black powder coat finish
- UL listed
- Replaces FM3260

FML642

FULL MOTION MOUNTS



A
**FULL MOTION
 IN-WALL 400X400**

- Fits TV's 32"- 60"
- Tilting angle: +5°/-15°
- Extension: up to 381MM (15")
- Swivel angle: +90°/-90°/
- Weight capacity: 75 lbs.
- VESA compliant: 100x100, 200x200, 400x400
- In wall installation between 16" on center studs
- All steel construction
- All hardware included
- Durable black powder coat finish
- ETL listed

FM44IW

B
**EXTRA LARGE
 FULL MOTION**

- Fits TV's 42"- 90"
- Swivel angle: +/-90°
- Weight capacity: 150 lbs.
- VESA compliant: 700x500 including 200x100, 200x200, 200x300, 300x200, 300x300, 400x200, 400x300, 400x400, 600x400 & 700x500
- Depth from wall: 3.6"
- Extends 31" from wall
- UL listed

FMXL75

C
**SWIVEL
 FULL MOTION**

- Fits TV's 24"- 65"
- Tilt angle: +/-13.8°
- Swivel angle: up to 180°
- Weight capacity: 55 lbs.
- Extension: 3.1" to 10.8"
- Heavy gauge steel
- Includes hardware & level
- UL listed

EAM32

A



B



C



A

TILT MOUNT

- Fits TV's 26" - 65"
- Tilt angle: +0°/-15°
- Distance to wall: 55MM
- Weight capacity: 66 lbs.
- VESA compliant:
100x100, 100x200,
200x200
- Heavy gauge steel
- All hardware &
mounting level included
- ETL listed

T2642-E

B

TILT MOUNT

- Fits TV's 36" - 85"
- Supports up to 100 lbs.
- 1.97" From the wall
- Tilt angle: +0°/-7°
- VESA compliant:
100x100 - 400x400
- Sturdy steel construction
- UL listed

CS-TM44E

C

TILT MOUNT

- Fits TV's 36" - 85"
- Supports up to 150 lbs.
- 1.97" From the wall
- Tilt angle: +0°/-7°
- VESA compliant:
100x100 - 600x400
- Sturdy steel construction
- UL listed

CS-TL64E

TILT MOUNTS



A

TILT MOUNT

- Fits TV's 26"- 65"
- Tilt angle: +0°/-20°
- Distance to wall: 27MM
- Weight capacity: 70 lbs.
- VESA compliant: 100x100/200, 200x200, 400x400
- Heavy gauge steel
- All hardware & mounting level included
- ETL listed

T2642

C

TILT MOUNT

POST LEVELING

- Fits TV's 42"- 85"
- Post leveling: +/- 10MM
- Tilt angle: +0°/-15°
- Distance to wall: 43MM
- Weight capacity: 99 lbs.
- VESA compliant: 200x200, 600x400
- Heavy gauge steel

TL64PL

B

TILT MOUNT

LARGE DISPLAYS

- Fits TV's 42"- 85"
- Tilt angle: +0°/-15°
- Distance to wall: 42MM
- Weight capacity: 88 lbs.
- VESA compliant: 200x200, 600x400
- Heavy gauge steel
- Sold as case packs of 4
- ETL listed

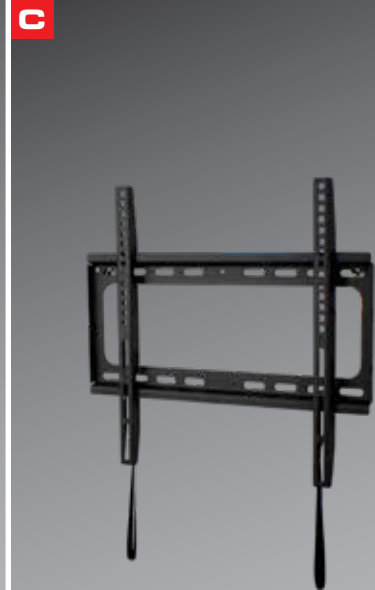
TL64

D

TILT MOUNT

- Fits TV's 42"- 85"
- Tilt angle: +0°/-15°
- Distance to wall: 68MM
- Weight capacity: 110 lbs.
- VESA compliant: 200x200, 200x400, 600x400
- Heavy gauge steel
- All hardware & mounting level included
- ETL listed

T3260



A
LOW PROFILE MOUNT

- Fits TV's 42"- 85"
- Supports up to 100 lbs.
- 1.1" From the wall
- VESA compliant:
100x100 - 400x400
- Sturdy steel construction
- UL listed

CS-LP44E

B
LOW PROFILE MOUNT

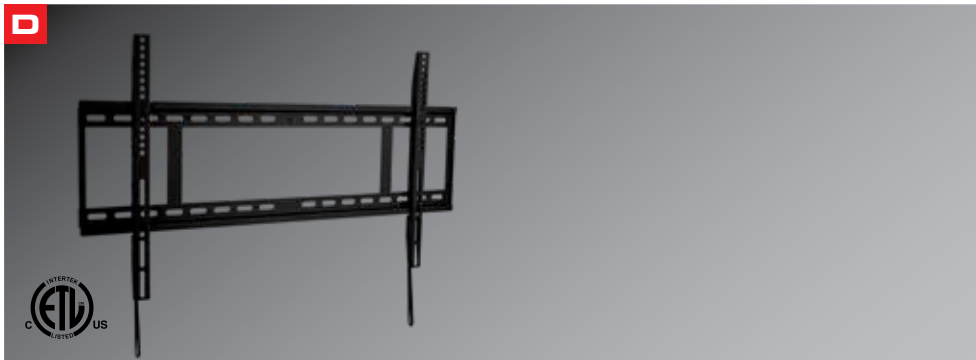
- Fits TV's 42"- 85"
- Supports up to 150 lbs.
- 1.1" From the wall
- VESA compliant:
100x100 - 400x600
- Sturdy steel construction
- UL listed

CS-LP64E

C
FIXED LOW PROFILE

- Fits TV's 26"- 65"
- Distance to wall: 28MM
- Weight capacity: 100 lbs.
- VESA compliant:
100x100, 100x200,
200x200, 200x400,
300x400/400
- Heavy gauge steel
- All hardware & mounting
level included
- ETL listed

LP2642



A
**FIXED
LOW PROFILE**

- Fits TV's 32"- 85"
- Distance to wall: 32MM
- Weight capacity: 132 lbs.
- VESA compliant: 200x200, 200x400, 400x400, 600x400
- Heavy gauge steel
- All hardware & mounting level included
- ETL listed

LP3260

C
POST LEVELING

- Fits TV's 32"- 85"
- Post leveling: +/- 10MM
- Distance to wall: 35MM
- Weight capacity: 132 lbs.
- VESA compliant: 200x200 - 600x400
- Heavy gauge steel
- All hardware & mounting level included

LP64PL

B
**ULTRA LOW
PROFILE FIXED MOUNT**

- Fits TV's 42"- 85"
- Depth from wall: 14MM (0.55")
- Weight capacity: 99 lbs.
- VESA compliant: 100x100, 200x100, 200x200, 400x200, 400x400, 600x400
- Dual stud installation with 16" or 24" on center studs
- All steel construction
- All hardware & mounting level included
- Durable black powder coat finish
- UL listed

LPU64

D
FIXED LOW PROFILE

- Fits TV's 47"- 85"
- Distance to wall: 30MM
- Weight capacity: 176 lbs.
- VESA compliant: 200x200, 200x400, 400x400, 600x400, 800x400
- Heavy gauge steel
- All hardware & mounting level included
- ETL listed

LP3265

A



B



C



A

CEILING MOUNT

32"-60"

- Fits TV's 32" - 85"
- Tilt angle: +5°/-15°
- Rotary angle: +/- 180°
- Height adjustable: 800-1500MM
- Weight capacity: 132 lbs.
- VESA compliant: 200x200 - 400x400
- Heavy gauge steel
- All hardware & mounting level included
- ETL listed

AS-CM3260

B

SOUND BAR MOUNT

- VESA compliant: up to 600x400
- Weight capacity: up to 33 lbs.
- Extra flexible design allows sound bar installation above or below on most televisions.
- Sturdy steel construction

SBMSW

C

TAILGATE TV MOUNT

Durable and functional mount that's compatible with most televisions ranging from 32" to 55" and weighing up to 60 lbs. The simple plug and play mount attaches directly to a 2" trailer receiver hitch for quick and easy installation. With durable black powder coat finish, the Helios Tailgate Mount is weatherproof for rain or shine and designed with clearance to allow tailgate up or down configurations. The Helios Tailgate Mount is made VESA Compliant with 100x100, 200x200, 400x400 and 600x400 patterns and all television mounting accessories come included with the mount to create a robust tailgate entertainment solution.

- Supports up to 60 lbs.
- VESA compliant: 100x100, 200x200, 400x400 & 600x400
- Compatible with 2" hitch receiver (requires adapter for use with 1.25")

TGML64



A

ROLLING CART

- Fits TV's 32" - 65"
- Adjustable height: 1200-1800MM
- Supports up to 132 lbs.
- Locking wheels
- VESA compliant: 200x200, 400x400, 600x480
- Heavy gauge steel
- All hardware included
- 5 year limited warranty
- ETL listed

AS-RC3260

B

RV/BOAT MOUNT

- Locks into flush position for safe transport on RVs and boats/yachts
- VESA compliant: 100x100 - 200x200
- Weight capacity: 40 lbs.
- Sturdy steel construction

FML22

C

RV/BOAT MOUNT

- Locks into flush position for safe transport on RVs and Boats/Yachts
- VESA compliant: 100x100 - 200x200
- Weight capacity: 33 lbs.
- Sturdy steel construction

FML22-R2



A

**BOOKSHELF
SPEAKER STAND**

- Supports up to 22 lbs.
- Square upright post
- Material: Aluminum & tempered glass
- Color: Black

AS-SPKR-5 PAIR

B

**BOOKSHELF
SPEAKER STAND**

- Supports up to 22 lbs.
- Round upright post
- Material: Aluminum & tempered glass
- Color: Black

AS-SPKR-8 PAIR

C

SATELLITE SPEAKER STAND

- Steel satellite speaker stand
- Supports up to 10 lbs.
- Material: Steel
- Color: Black

AS-SPKR-11 PAIR

D

ANTI-THEFT SPEAKER MOUNT

- Anti-theft speaker wall/ceiling mount
- Supports up to 33 lbs.
- Material: Steel
- Color: Black

AS-SPKR-18 PAIR



A

SMALL SPEAKER MOUNT

- Small speaker wall/ceiling mount
- Supports up to 7.7 lbs.
- Material: Nylon
- Color: Black

AS-SPKR-19 PAIR

B

SMALL SPEAKER MOUNT

- Small speaker wall mount
- Supports up to 7.7 lbs.
- Material: Nylon
- Color: Black

AS-SPKR-20 PAIR

C

MEDIUM SPEAKER MOUNT

- Medium speaker wall mount
- Supports up to 22 lbs.
- Material: Steel & ABS
- Color: Black

AS-SPKR-24 PAIR

D

BOOKSHELF SPEAKER WALL MOUNT

- Supports up to 33 lbs.
- Material: Steel
- Color: Black

AS-SPKR-26 PAIR

A



B



C



HELIOS® POWER

123

A

SURGE + CONDITIONER

- 9 outlets total
- Integrated volt & current meters & LED indicators for grounding, protected & digital outlet status
- Free app for control of smart outlets
- 5 digital outlets (1 front always on and 4 rear individually controlled smart outlets)
- 2 switched analog outlets
- 2 switched high current outlets
- 1 USB type A & 1 USB type C, total 4.8A
- 2 pair coax surge protection
- (1) 12 volt DC trigger
- 2160 joules
- 120V/15A rated
- EMI/RFI 65 dB of shielding
- 8' power cable
- Includes ears for rack mounting
- UL listed
- Black and red packaging

AS-P-603W

B

SURGE STRIP

- 6 outlets
- 4' power cord
- UL listed
- Black and red packaging

AS-LTS-6

C

SURGE STRIP

- 6 outlets
- 4' flat head power cable
- UL listed
- White and black packaging

AS-HLTS-6



- A**
- SURGE STRIP**
- 3 A/C outlets
 - 2 USB 2.1A outlets
 - 900 joules
 - 4' power cable
 - ETL listed
 - Black and red packaging

AS-P-103U

- B**
- SURGE STRIP**
- 4 outlets
 - 300 Joules
 - 1.5' power cable
 - ETL listed
 - Black and red packaging

AS-P-104

- C**
- SURGE STRIP**
- 7 A/C outlets
 - 900 joules
 - 4' power cable
 - ETL listed
 - Black and red packaging

AS-P-107



POWER SURGE

125

- A**
- SURGE STRIP**
- 4 outlets
 - 450 Joules
 - Two 2.1A USB ports
 - 6' flat head power cable
 - ETL listed
 - White and black packaging

AS-HP-204U

- B**
- SURGE STRIP**
- 6 outlets
 - 1080 joules
 - Two 2.1A USB ports
 - 6' power cable
 - ETL listed
 - Black and red packaging

AS-P-206

- C**
- SURGE STRIP**
- 6 outlets
 - 1080 Joules
 - Two 2.1A USB ports
 - 6' flat head power cable
 - ETL listed
 - White and black packaging

AS-HP-206U



A

WALL TAP

- 6 outlets
- 90° rotatable outlets
- Surge protection: up to 450 joules
- LED indicators
- ETL listed
- Black and red packaging

AS-P-6R

C

WALL TAP

- 5 outlets
- 90° rotatable outlets
- Surge protection: up to 450 joules
- 2 USB charging ports 2.1A
- LED indicators
- ETL listed
- Black and red packaging

AS-P-5R

B

WALL TAP

- 6 outlets
- 90° rotatable outlets
- Surge protection: up to 450 joules
- LED indicators
- ETL listed
- White and black packaging

AS-HP-6R

D

WALL TAP

- 5 outlets
- 90° rotatable outlets
- Surge protection: up to 450 joules
- 2 USB charging ports 2.1A
- LED indicators
- ETL listed
- White and black packaging

AS-HP-5R

A



B



C



A

SURGE STRIP

- 7 outlets
- 900 joules
- Cable: 14AWG 6'
- AC 15A 125V 60Hz 1875W
- ETL/CETL listed
- Black and red packaging

AS-P-207

B

SURGE STRIP

- 7 outlets
- Surge protection: up to 900 joules
- 6' flat head power cable
- ETL listed
- White and black packaging

AS-HP-207

C

SURGE STRIP

- 8 outlets
- Surge Protection: up to 2160 joules
- USB: DC5V 2.1A 2 USB
- Cable: 14AWG 6'
- AC 15A 125V 60Hz 1875W
- ETL/CETL listed
- Black and red packaging

AS-P-208U



A
SURGE STRIP

- 8 outlets
- 2160 joules
- Two 2.1A USB ports
- 6' flat head power cable
- ETL listed
- White and black packaging

AS-HP-208U

B
SURGE PROTECTION

- 12 outlets
- Surge protection: 3420 joules
- Coax protection
- Two 3.4A USB ports
- 6' power cable
- ETL listed
- Black and red packaging

AS-P-61200

C
SURGE PROTECTION

- 12 outlets
- 4050 joules
- 2 USB ports 2.1A
- Coax protection
- Flat head plug
- ETL listed
- White and black packaging

AS-HP-612004U

A



B



C



POWER SURGE

129

A

SURGE PROTECTION

- 2 outlets
- 245 joules
- 2 USB ports 2.1A
- ETL listed
- Black and red packaging

AS-P-2WTU

B

SURGE PROTECTION

- 3 outlets
- 900 joules
- 2 USB charging ports 3.1A
- ETL listed
- Black and red packaging

AS-P-3WTU

C

SURGE PROTECTION

- 3 outlets
- 900 joules
- 2 USB charging ports 3.1A
- ETL listed
- White and black packaging

AS-HP-3WTU



A
SURGE PROTECTION

- 4 outlets
- Five 2.4A USB ports (8A/40W maximum)
- 5' power cable
- ETL listed
- Black and red packaging

AS-P-25U

- B**
USB CHARGER
- One QC 3.0 USB quick charge port
 - One 2.4A USB port
 - UL listed
 - Black and red packaging

AS-P-24U

- C**
CAR CHARGER
- 2 USB ports 3.1A
 - Black and red packaging

AS-P-DC2U

A



B



A

DOUBLE OUTLET POWER RELOCATION KIT

- Dual 110V outlets
- Relocate power and AV cables
- Tools, inwall and extension power cables included
- ETL listed

AS-PWRLODBL

B

POWER RELOCATION

Hide your wires and clean up your TV install

- Hole saw with t-handle
- 3M fish tape
- 2M extension power cable
- (2) wall ports
- 3M in-wall power cable
- ETL listed

AS-PWRLOCATE



A

SCREEN CLEANING KIT

- Includes 200ml alcohol free spray & microfiber cleaning cloth
- Safely cleans laptop, mobile device, TV and computer screens
- Remove dust and fingerprints without streaking
- Stops bacteria where it grows

AS-SC002

B

SCREEN CLEANING KIT

- Includes 45ml alcohol free spray & microfiber cleaning cloth
- Safely cleans mobile and PDA screens
- Remove dust and fingerprints without streaking
- Stops bacteria where it grows

AS-SC005

C

SCREEN CLEANING KIT

- Includes 200ml alcohol free spray, microfiber cleaning cloth & anti-static dust brush
- Safely cleans laptop, mobile device, TV and computer screens
- Remove dust and fingerprints without streaking
- Stops bacteria where it grows

AS-SC006



A

POWER & AV KIT

Connect and clean home theater devices with the Helios retail AV Kit, combining four products into one kit for unmatched quality and convenience. This kit includes:

ASH-HDM809 - 4K HDMI® + Ethernet Cable - 9'

- 4K/60Hz Super Ultra HD and 18Gbps High Speed Rated: provides the maximum bandwidth
- HDR compatible: provides a richer, wider range of colors with 32 audio channels to enhance sound quality
- Universally compatible: supports HDMI® 2.0, HDCP 2.2 and is backwards compatible with older versions
- Supports ethernet: share an internet connection without the need for a separate ethernet cable

AS-USB-MICRO - USB-Micro to USB cable - 6'

- Certified high-speed support for USB 2.0
- Syncs data at 480Mbps
- Charges Android Micro-USB connecting devices (not compatible with Apple® devices)
- USB-IF certified for full USB 2.0 support

AS-USB-C - USB-C to USB Cable - 6'

- Certified high-speed support for USB 2.0
- Sync data at 480Mbps
- Charges Android™ type C USB connecting devices
- USB-IF certified for full USB 2.0 support

AS-SC002 - Screen cleaning kit

- Safely clean any LCD screen or glass surface
- Non-aerosol cleaner removes fingerprints and smudges without harsh solvents
- Soft, lint-free microfiber cloth cleans, dries and polishes for a clear, non-streak finish

AS-P-206 - Surge Protection Power Strip - 6'

- 1080 joules of surge protection
- (6) power outlets and two USB 2.1A ports
- 6' power cord
- Includes a \$110,000 equipment protection warranty

AS-AVKIT2

A



134

A

POWER & AV KIT

Connect and clean home theater devices with the Helios retail AV Kit, combining four products into one kit for unmatched quality and convenience. This kit includes:

ASH-HDM809 - 4K HDMI® + Ethernet Cable - 9'

- 4K/60Hz Super Ultra HD and 18Gbps High Speed Rated: provides the maximum bandwidth
- HDR compatible: provides a richer, wider range of colors with 32 audio channels to enhance sound quality
- Universally compatible: supports HDMI® 2.0, HDCP 2.2, and is backwards compatible with older versions
- Supports Ethernet: share an internet connection without the need for a separate Ethernet cable

AS-T-200 - Optical Digital Audio Cable - 9'

- Precision polished terminals for maximum light transmission
- Supports 24bit 48Hz audio
- Male to male connector
- Compatible with receivers, DVD/Blu-ray players, TVs, satellite systems, soundbars and gaming consoles
- Braided jacket and durable terminals

AS-SC001 - Screen Cleaning Kit

- Safely clean any LCD screen or glass surface without leaving lint, scratches or streaks behind
- (2) 45 ml/ 1 oz bottles of screen cleaner
- Anti-static and no run formula with no ammonia or alcohol
- Safe and effective for delicate screens
- 8" scratch-free microfiber cloth included

AS-P-206 - Surge Protection Power Strip - 6'

- 1080 joules of surge protection
- (6) power outlets and two USB 2.1A ports
- 6' power cord
- Includes a \$110,000 equipment protection warranty

AS-AVKIT2

A



B



BULK WIRE

135

A

BULK RG6 QUAD CABLE

50' REEL

RG6Q-B-50

RG6 Quad CCS, Coax

100' REEL

RG6Q-B-100

RG6 Quad CCS, Coax

250' REEL

RG6Q-B-250

RG6 Quad CCS, Coax

B

SPEAKER WIRE

50' REEL

AS-SW12-50

12 AWG, 2 Conductor

100' REEL

AS-SW12-100

12 AWG, 2 Conductor

250' REEL

AS-SW12-250

12 AWG, 2 Conductor

SPEAKER WIRE

SPEAKER WIRE

136

A



B



A

SPEAKER WIRE

50' REEL

AS-SW14-50

14 AWG, 2 Conductor

100' REEL

AS-SW14-100

14 AWG, 2 Conductor

250' REEL

AS-SW14-250

14 AWG, 2 Conductor

B

SPEAKER WIRE

50' REEL

AS-SW16-50

16 AWG, 2 Conductor

100' REEL

AS-SW16-100

16 AWG, 2 Conductor

250' REEL

AS-SW16-250

16 AWG, 2 Conductor

500' REEL

AS-SW16-500

16 AWG, 2 Conductor

PREMIUM HOME THEATER PRODUCTS

Metra[®]
HOME THEATER GROUP

POINT OF PURCHASE

PREMIUM HOME THEATER PRODUCTS

Metra[®]
HOME THEATER GROUP

POINT OF PURCHASE

A



B



C



D



ETHEREAL T-SHIRT

MHTGSHIRT-S

- Small

MHTGSHIRT-M

- Medium

MHTGSHIRT-L

- Large

MHTGSHIRT-XL

- Extra large



A

ETHEREAL DISPLAYS

- Large or small black powder coated metal display
- Metal pegboard for high strength
- Dimensions: L - 78”H x 39.5”W x 13.5”D
S - 72”H x 20”w x 13.5”D
- Product not included

RACK700

ETH-RACK700-STK

SMALL DISPLAY

ETHEREAL SMALL TOP AND BOTTOM DECALS

RACK750

ETH-RACK750-STK

LARGE DISPLAY

ETHEREAL LARGE TOP DECAL AND BOTTOM SMALL DECAL

B

ETHEREAL OUT OF STOCK CARD

- Pack of 25

MHTG-STKCD

C

ETHEREAL BANNER

- High quality printed banner
- Includes reinforced holes for hanging
- Dimensions: 48” x 24”

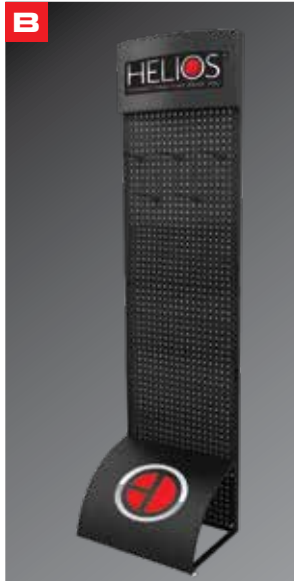
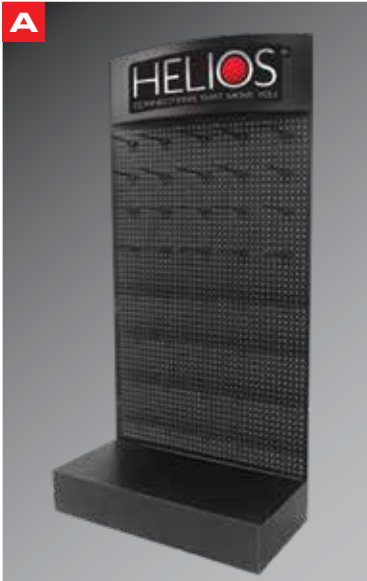
ETH-BANNER16

D

ETHEREAL SLAT WALL HEADER

- High quality printed logo graphic
- Lightweight rigid material
- Dimensions: 48” x 8”

ETH-SLATHDR16



A

HELIOS XL DISPLAY

- Large black powder coated metal display
- Metal pegboard for high strength
- Dimensions: 78”H x 39.5”W x 13.5”D
- Product NOT included

RACK750 **XL DISPLAY**
HS-RACK750-STK **HELIOS LARGE TOP DECAL**

B

HELIOS SKINNY DISPLAY

- Black powder coated metal
- Metal pegboard for high strength
- Dimensions each: 72”H x 20”w x 13.5”D
- Product NOT included

RACK700 **SKINNY DISPLAY**
HS-RACK700-STKT **HELIOS SMALL TOP DECAL**
HS-RACK700-STKB **HEISE SMALL BOTTOM DECAL**

C

HELIOS SLAT WALL HEADER

- High quality printed logo graphic
- Lightweight rigid material
- Dimensions: 48” x 8”

HS-SLATWALL

A



B



C



D



E



A

SPYCLOPS BANNER

- High quality printed banner
- Includes reinforced holes for hanging
- Dimensions: 48" x 24"

SPY-BANNER

B

**SPYCLOPS WINDOW CLING
"MONITORED BY"**

- High quality printed banner
- Includes reinforced holes for hanging
- Dimensions: 48" x 24"

SPY-SURV14

C

SPYCLOPS SLAT WALL HEADER

- High quality printed logo graphic
- Lightweight rigid material
- Dimensions: 48" x 8"

SPY-SLATWALL

D

SPYCLOPS WINDOW CLING

- High quality printed logo graphic
- Lightweight rigid material
- Dimensions: 48" x 8"

SPY-CLING

E

SPYCLOPS T-SHIRT

- Grey

SPY-TEE-S

SPY-TEE-M

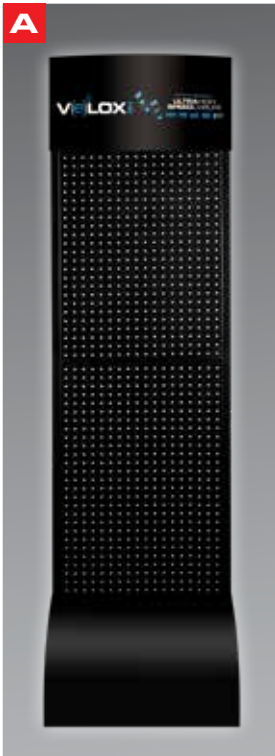
SPY-TEE-L

SPY-TEE-XL

SPY-TEE-XXL

VELOX® POP

140



A

VELOX DISPLAYS

- Large or small black powder coated metal display
- Metal pegboard for high strength
- Dimensions: L - 78”H x 39.5”W x 13.5”D
S - 72”H x 20”w x 13.5”D
- Product not included

RACK700
VLX-700TOP
VLX-700BOT

SKINNY DISPLAY
SMALLER DISPLAY, INCLUDES
TOP AND BOTTOM STICKER

B

VELOX SLAT WALL HEADER

- High quality printed logo graphic
- Lightweight rigid material
- Dimensions: 48” x 8”

VLX-SLATHDR

TERMS:

NET 30 DAYS FROM DATE OF INVOICE ON APPROVED ACCOUNTS. MINIMUM ORDER: \$50 PER INVOICE, ORDERS LESS THAN REQUIRED MINIMUM INCUR A \$20 SERVICE CHARGE.

FREIGHT:

FREIGHT ON BOARD (F.O.B.) FROM POINT OF SHIPMENT. FREIGHT WILL BE CHARGED ON ALL DROP-SHIPMENT ORDERS.

CREDIT:

IN ORDER TO ESTABLISH A CREDIT LINE WITH METRA, AN APPLICATION FOR CREDIT MUST BE SUBMITTED LISTING A MINIMUM OF FIVE (5) TRADE REFERENCES AND A BANK WITH THEIR ADDRESSES AND PHONE NUMBERS AND MUST BE SIGNED BY A PRINCIPAL OR AUTHORIZED OFFICER OF THE COMPANY. A CREDIT LINE WILL BE ESTABLISHED BY OUR CREDIT MANAGER AND MUST BE MAINTAINED IN A CURRENT STATUS ACCORDING TO OUR TERMS (NET 30 DAYS). CREDIT NOT ESTABLISHED OR REVOKED REQUIRES REMITTANCE WITH ORDER. RETURNED CHECKS ARE SUBJECT TO A FEE OF \$32.00.

RESALE TAX EXEMPTION CERTIFICATE:

CA, TX, KY, NJ & FL CUSTOMERS MUST PROVIDE A VALID RESALE CARD BEFORE AN ORDER CAN BE PLACED.

CLAIMS:

TITLE AND RISK OF LOSS PASSES TO BUYER AT F.O.B. SHIPPING POINT AND ALL CLAIMS MUST BE FILED WITH CARRIER. ANY DISCREPANCIES MUST BE REPORTED TO METRA WITHIN TEN (10) DAYS OF RECEIPT OF SHIPMENT.

RETURNS:

ALL SALES ARE FINAL. NO RETURNS OR EXCHANGES WILL BE ALLOWED WITHOUT PRIOR WRITTEN AUTHORIZATION FROM METRA. ALL RETURNS ARE SUBJECT TO A 20% HANDLING CHARGE, MUST BE IN A SALEABLE CONDITION, AND MUST HAVE BEEN PURCHASED WITHIN SIXTY (60) DAYS OF RETURN REQUEST. NO STOCK BALANCING PERMITTED. COPIES OF INVOICES MUST BE MAILED IN ADVANCE FOR ANY RETURN AUTHORIZATION (R.A.).

LIMITED WARRANTY:

THIS LIMITED WARRANTY IS PROVIDED BY METRA ELECTRONICS CORPORATION AND THERE ARE NO OTHER WARRANTIES, EXPRESSED OR IMPLIED, EXCEPT AS REQUIRED BY LAW, INCLUDING WARRANTIES OF MERCHANTABILITY AND FITNESS FOR A SPECIFIC PURPOSE, THAT ARE PROVIDED FOR HEREIN, HOWEVER ALL SUCH IMPLIED WARRANTIES, IF ANY, ARE LIMITED TO THE DURATION OF THIS SPECIFIC LIMITED PRODUCT WARRANTY. SOME STATES DO NOT ALLOW LIMITATIONS ON HOW LONG AN IMPLIED WARRANTY LASTS, SO THE ABOVE LIMITATIONS MAY NOT APPLY TO YOU.

METRA ELECTRONICS CORPORATION SHALL NOT BE LIABLE, UNDER ANY CIRCUMSTANCES, FOR INCIDENTAL, INDIRECT, SPECIAL, CONSEQUENTIAL OR MULTIPLE DAMAGES AS A RESULT OF THE SALE OR USE OF THIS PRODUCT. SOME STATES/ COUNTRIES DO NOT ALLOW THE EXCLUSION OR LIMITATION OF INCIDENTAL OR CONSEQUENTIAL DAMAGES, SO THE ABOVE LIMITATION OR EXCLUSION MAY NOT APPLY TO YOU.

1-YEAR LIMITED WARRANTY

WARRANTY PERIOD: WARRANTED FOR 1 YEAR FROM THE ORIGINAL PURCHASE DATE FOR MANUFACTURING DEFECTS. RUST AND CORROSION ARE NOT COVERED. DAMAGED, MODIFIED OR CUT HARNESSSES VOID THIS WARRANTY.

THIS IS A LIMITED WARRANTY, SUBJECT TO THE CONDITIONS, LIMITATIONS AND EXCLUSIONS IDENTIFIED HEREIN. METRA ELECTRONICS CORPORATION WARRANTS TO THE ORIGINAL PURCHASER OF THE REGISTERED FOR THE PERIOD OF TIME SPECIFIED FOR EACH PRODUCT FROM THE DATE OF PURCHASE, THAT THE PRODUCT SHALL BE FREE OF DEFECTS IN DESIGN, MATERIAL AND WORKMANSHIP, AND SUBJECT TO THE LIMITATIONS SET FORTH BELOW, METRA ELECTRONICS CORPORATION WILL REPAIR OR REPLACE, AT ITS OPTION, ANY DEFECTIVE UNIT.

CONDITIONS AND LIMITATIONS:

1. PROOF OF PURCHASE IS REQUIRED (I.E. THE SALES RECEIPT OR OTHER PROOF OF PAYMENT)
2. DAMAGE CAUSED BY ACCIDENTS, ABUSE, MISUSE OR MODIFICATION OF THE PRODUCT WILL RENDER THIS WARRANTY NULL AND VOID.
3. THIS WARRANTY IS APPLICABLE ONLY TO THE ORIGINAL PURCHASER AND IS NOT ASSIGNABLE OR TRANSFERABLE.
4. THE PURCHASER IS REQUIRED TO SEND THE PRODUCT BACK TO METRA ELECTRONICS IN ACCORDANCE WITH THE INSTRUCTIONS SET FORTH IN THE WARRANTY INFORMATION ENCLOSED WITH THE PRODUCT

NOTICE: THE WARRANTY DOES NOT COVER ANY DAMAGE OR MALFUNCTIONS OCCUR DUE TO SHIPPING; IMPROPER INSTALLATION OR REMOVAL; IMPROPER REPAIR; COSMETIC DAMAGE DUE TO WEAR AND TEAR, AND OTHER CAUSES NOT ASSOCIATED WITH THE MANUFACTURING AND ASSEMBLY OF THE PRODUCT.

BACK ORDERS:

IF AN ITEM IS TEMPORARILY UNAVAILABLE FOR IMMEDIATE SHIPMENT, WE WILL BACK-ORDER THE ITEM AND SHIP AS SOON AS POSSIBLE FROM THE NEAREST AVAILABLE WAREHOUSE, UNLESS OTHERWISE INSTRUCTED.

METRA RESERVES THE RIGHT TO MAKE CHANGES IN OR DELETIONS OF PRODUCTS OR PRICES WITHOUT PRIOR NOTICE.

*METRA WILL NOT ASSUME ANY RESPONSIBILITY FOR DAMAGES TO PERSON OR PROPERTY DUE TO INCORRECT INTERPRETATION OF THE MATERIAL IN THIS PUBLICATION. METRA IS NOT RESPONSIBLE FOR TYPOGRAPHICAL OR PRINTING ERRORS. REPRODUCTIONS OF EDITORIAL OR PICTORIAL CONTENT IS STRICTLY PROHIBITED WITHOUT PRIOR CONSENT FROM METRA.



WARNING: This catalog does not advise whether a State of California Proposition 65 warning is required for a particular item of merchandise. To learn whether a particular item of merchandise requires a California Proposition 65 warning, please be sure to look up and read the particular merchandise's listing on Metra's website www.MetraOnline.com, as well as read the particular merchandise's packaging. When a California Proposition 65 warning is present on Metra's website listing for the particular merchandise, or on the particular merchandise's packaging, a compliant California Proposition 65 warning is to be provided to the purchasing California consumer prior to the sale of the particular merchandise.



www.facebook.com/EtherealHometheater



www.twitter.com/MetraHome



www.youtube.com/user/EtherealHomeTheater



www.instagram.com/MetraHome



Order Anytime Day or Night at www.MetraHomeTheater.com



Download all our New Catalogs at www.MetraHomeTheater.com

CORPORATE HEADQUARTERS

Metra Electronics Corporation
460 Walker Street
Holly Hill, FL 32117-2699

Metra Corporate: 386.257.1186
Metra Home Theater Sales: 386.255.0234

WAREHOUSE OPERATIONS

Daytona Beach, FL
Dallas, TX
Freehold, NJ
Lexington, KY
Fresno, CA
Long Beach, CA

OVERSEAS OPERATIONS

Taipei, Taiwan R.O.C. • Hong Kong



MetraHomeTheater.com
ORDERS: 386.255.0234

CORPORATE HEADQUARTERS:

Metra Electronics Corporation
460 Walker Street
Holly Hill, FL 32117-2699

© Copyright 2020 - Metra Electronics Corporation



MHTGCAT-20