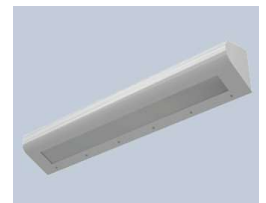




# Patient Safety Standards, Materials and Systems Guidelines

Recommended by the  
**New York State Office of Mental Health**

With respect to NYS-OMH operated facilities, these Guidelines apply solely to new construction and major renovation projects. Existing facilities should use these Guidelines as a reference document whenever they make improvements.



# Division 08 | Openings

## Glazing, Exterior Windows, Polycarbonate Glazing

### General Notes

Glazing products other than polycarbonate or laminated safety glazing should never be used in patient areas.

In all patient areas where the applicable codes and regulatory authority permit the use of polycarbonate glazing, polycarbonate glazing provides the best protection for the patient against the previously listed risks.



### Sabic Innovative Plastics

[www.sabic-ip.com](http://www.sabic-ip.com)

**FOR USE AS INNERMOST SURFACE OF EXTERIOR WINDOWS**

### Lexan SL-4855 Polycarbonate Glazing

1/2" thick with Marguard II-UV coating. Specify MR10 with 10 year warranty.



### Plaskolite, LLC

[www.plaskolite.com](http://www.plaskolite.com)

**FOR USE AS INNERMOST SURFACE OF EXTERIOR WINDOWS**

### Tuffak 15 Polycarbonate Glazing

1/2" thick. Use with NYS-OMH 15 year warranty.

# Division 08 | Openings

## Glazing, Interior Windows, Glazing

### General Notes

Glazing products other than polycarbonate or laminated safety glazing should never be used in patient areas.

Laminated safety glazing, other than the laminate specifically identified, should be used with caution.

3/8" polycarbonate is recommended where ingesting, laceration, and weaponization are the risks to be mitigated.

1/2" polycarbonate is recommended where escape or jumping are the risks to be mitigated.



### Sabic Innovative Plastics

[www.sabic-ip.com](http://www.sabic-ip.com)

#### Lexan SL-4855 Polycarbonate Glazing

3/8" or 1/2" thick with Marguard II-UV coating. Specify MR10 with a 10 year warranty. Install in hollow metal frames with a 1" continuous edge bite.



### Plaskolite, LLC

[www.plaskolite.com](http://www.plaskolite.com)

#### Tuffak 15 Polycarbonate Glazing

1/2" thick. Use with NYS-OMH 15 year warranty. Install in hollow metal frames with a 1" continuous edge bite.

### Oldcastle Building Envelope

[www.oldcastlebe.com](http://www.oldcastlebe.com)

#### ArmorProtect Plus 161000 Laminated Security Glazing

3/8" thick. 3M film is scratchable and may be removed from the laminated glass panel and new film installed by trained maintenance staff. Curing time for the film installation is two weeks minimum. Maintenance staff should be advised to keep spare stock that is fully cured to eliminate down time. Install in hollow metal frames with a 1" continuous edge bite if dry glazed or 1/2" continuous edge bite if silicone glazed.

- No. 1 Surface:  
3M Ultra S600 anti-spall film installed to edge of glass
- No. 2 Surface:  
5/32" heat-strengthened glass
- No. 3 Surface:  
0.090" DuPont SentryGlas Plus interlayer
- No. 4 Surface:  
5/32" heat-strengthened glass
- No. 5 Surface:  
3M Ultra S600 anti-spall film installed to edge of glass

**Caution: Wet-glazing compounds and cleaning agents have been known to compromise the integrity of the interlayer, and care should be taken with their use. Care should be taken to properly identify the tin side of the glass and to handle it according to manufacturers' instructions.**

# Division 08 | Openings Glazing, Observation Mirrors

## Installation Notes

Installation Option 1:  
Install glazing in a hollow metal frame with glazing stops that provide a 5/8" continuous edge bite.



Installation Option 2:  
Install glazing in a hollow metal frame with glazing stops that provide a 1/2" continuous edge bite with structural silicone sealant at the full perimeter.



## Plaskolite, Inc.

[www.plaskolite.com](http://www.plaskolite.com)

### See-Thru Mirror

Two-way observation polycarbonat mirror, 0.236" thick minimum. Product is semi-transparent.



Transparency



Reflectivity

