



**Kubota®**

# 2021 FULL LINE BROCHURE

TRACTORS / HAY TOOLS / CONSTRUCTION EQUIPMENT / UTILITY VEHICLES / MOWERS







You know that feeling of accomplishment after a long day of working the land?

Whether it's turning soil, pushing dirt, making hay or mowing grass, that feeling lingers on when you're confident that you have the right equipment for the job, doing its part right along with you, day after day.

It's that confidence that leads to a whole new level of productivity, ultimately helping you achieve your vision.

At Kubota, we have a near 50-year history of providing precisely engineered machines with confidence-backed quality to ensure our customers can do more every day.

We know doing your homework is part of the job because it leads to making informed choices about your equipment and its ability to perform when you need to get the job done.

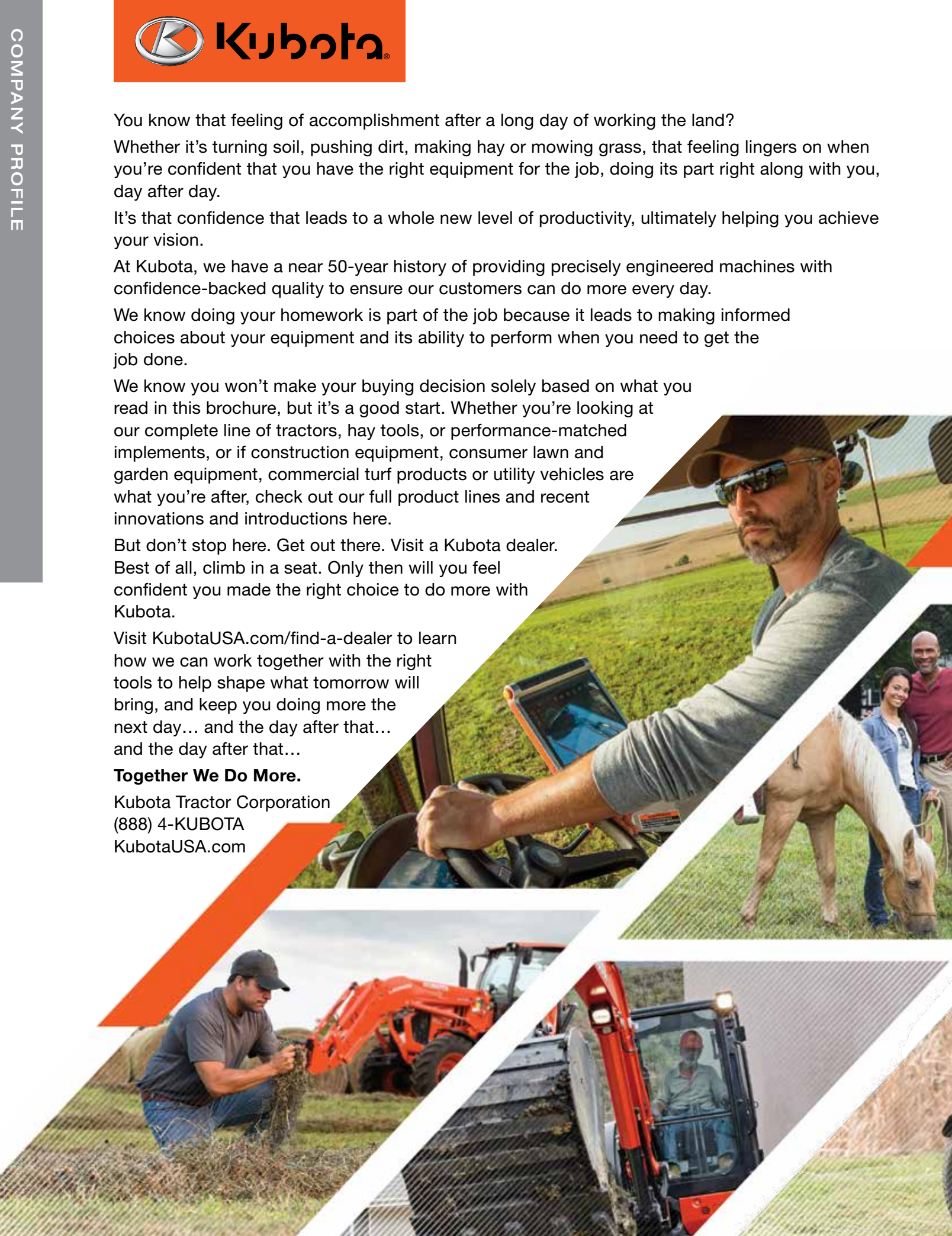
We know you won't make your buying decision solely based on what you read in this brochure, but it's a good start. Whether you're looking at our complete line of tractors, hay tools, or performance-matched implements, or if construction equipment, consumer lawn and garden equipment, commercial turf products or utility vehicles are what you're after, check out our full product lines and recent innovations and introductions here.

But don't stop here. Get out there. Visit a Kubota dealer. Best of all, climb in a seat. Only then will you feel confident you made the right choice to do more with Kubota.

Visit [KubotaUSA.com/find-a-dealer](http://KubotaUSA.com/find-a-dealer) to learn how we can work together with the right tools to help shape what tomorrow will bring, and keep you doing more the next day... and the day after that... and the day after that...

**Together We Do More.**

Kubota Tractor Corporation  
(888) 4-KUBOTA  
[KubotaUSA.com](http://KubotaUSA.com)



**2021 FULL LINE BROCHURE****SUB-COMPACT TRACTORS**

2 BX Series

**COMPACT TRACTORS**

6 B01 Series

8 LX Series

12 Standard L01 Series

14 L60LE Series

18 Grand L60 Series

**STANDARD UTILITY AG TRACTORS**

22 MX Series

24 M60 Series

**UTILITY AG TRACTORS**

26 M4 Series

28 M5 Series

**MID-SIZE UTILITY TRACTORS**

30 M6S Series

32 M6 Series

**AG TRACTORS**

34 M7 Series Gen 2

**UTILITY/SPECIALTY AG TRACTORS**

36 Narrow Models

38 Low-Profile Models

40 High-Clearance Models

**HAY TOOLS**

42 Disc Mowers

44 Disc Mower Conditioners

48 Tedders

50 Rotary Rakes

52 Wheel Rakes

54 Balers

56 Wrappers

58 VS Series

**CONSTRUCTION EQUIPMENT**

60 Loaders/Landscapers

62 SCL1000 Series

64 SSV Compact Skid Steer Loaders

66 SVL Compact Track Loaders

70 Excavators

76 Wheel Loaders

**UTILITY VEHICLES**

78 RTV Series

80 Sidekick Series

84 RTV-X Series

**MOWERS**

92 T Series

94 GR Series

96 New Z200 Series

98 Z400 Series

100 Z700 Series

102 SZ Series

104 W Series

106 ZG200 Series

108 ZG300 Series

110 ZD1000 Series

112 ZD1200 Series

114 ZD1500 Series

116 F Series

**KUBOTA SERVICES**

118 Kubota Services







## BX Series

BX1880 | BX2380 | BX2680

### Easy operation, superior comfort, and simple operation.

- › Kubota's Swift-Tach Loader allows for quick and easy removal and installation of the front loader without tools and without getting off the operator station
- › With an overall height of less than 7', the BX1880, BX2380, and BX2680 make storage a breeze— not having to fold the ROPS to park your tractor in a standard garage saves time and hassle
- › With a Standard Category I 3-point hitch, optional mid-mount mower decks, and an available front hitch, the BX Series can be equipped with an implement to quickly and easily handle most any task
- › The BX2380 and BX2680 deluxe operator's station with tilt steering and a deluxe high-back seat with armrests create a comfortable operator experience, making any chore seem less like work and more like fun
- › Equipped with a Hydrostatic Transmission (HST), the BX Series tractors are easy to use— simply press the pedal forward to go forward, press the pedal backwards for reverse— our treadle pedal system will have even first-time owners operating like professionals in no time
- › Got snow? The Kubota Heated Cab is a great dealer-installed option to add to your BX Series to improve comfort and protect yourself during those cold winter months



# BX Series

	BX1880	BX2380	BX2680
<b>Engine Type</b>	Kubota, liquid-cooled, diesel, 3-cylinder		
<b>Horsepower (gross)*</b>	16.6	21.6	24.8
<b>Horsepower (PTO)*</b>	13.7	17.7	19.5
<b>Displacement (cu. in.)</b>	43.9	54.8	61.1
<b>Length (w/ 3-point)</b>	95.5"		
<b>Width (min. tread)</b>	44.1"	45.1"	
<b>Height (with ROPS)</b>	81.9"	83.1"	
<b>Wheelbase</b>	55.1"		
<b>Ground Clearance (front axle)</b>	5.8"	6.5"	
<b>Speed (mph) (front/reverse)</b>	0-7.8 / 0-5.9	0-8.4 / 0-6.5	
<b>Rear 3-point hitch</b>	Category I		
<b>Lift capacity 24" behind pin lbs. (kg)</b>	680 (310)		
<b>Transmission</b>	HST, high-low gear shift (2 forward/reverse)		
<b>Tractor Weight (lbs.)</b>	1,404	1,454	1,520

## KEY ATTACHMENTS

<b>Front Loader</b>	LA344 – Pin-on Style Bucket LA344S – Two Lever Quick Attach Bucket		
<b>Mid-Mount Mower</b>	48", 54"	54", 60"	
<b>Easy-Over Mower</b>	N/A	54", 60"	

## FRONT LOADER SPECIFICATIONS

	LA344		LA344S	
	BX1880	BX2380/BX2680	BX1880	BX2380/BX2680
<b>Maximum Lift Height</b>	70.7"	71.0"	70.7"	71.0"
<b>Lift Capacity at Pivot Pin (1500 mm height) (lbs.)</b>	820		699	
<b>Breakout Force (bucket pivot pin) (lbf.)</b>	1,407		1,286	

## MOWER SPECIFICATIONS

	MID-MOUNT			EASY-OVER	
<b>Cutting Width</b>	48"	54"	60"	54"	60"
<b>Discharge</b>	Side				
<b>Mounting Method</b>	Suspended				
<b>Adjustment of Cutting Height</b>	Dial				

\* SAE J1995







## BX Series

BX23S

### Easy operation, superior comfort, and simple operation.

- › Kubota's Swift-Tach Loader allows for quick and easy removal and installation of the front loader without tools and without getting off the operator station
- › The Kubota Swift-Connect Backhoe on the BX23S is designed to match perfectly with the tractor and loader: not only designed to tackle tough digging jobs, but also designed to be versatile, the BX23S can be converted from a backhoe to a tractor with a 3-point hitch quickly, easily, and without tools
- › With an optional Category I 3-point hitch, optional mid-mount mower decks, and an available front hitch, the BX Series can be equipped with an implement to quickly and easily handle most any task
- › The BX23S has a deluxe high-back seat with armrests, tilt steering, and reversible seat for comfort when operating the tractor, loader, or backhoe
- › The ROPS operator opening has been widened, giving the operator additional room and comfort when operating the backhoe
- › Equipped with a Hydrostatic Transmission (HST), the BX Series tractors are easy to use — simply press the pedal forward to go forward, press the pedal backwards for reverse — our treadle pedal system will have even first-time owners operating like professionals in no time
- › Got snow? The Kubota Heated Cab is a great dealer-installed option to add to your BX Series to improve comfort and protect yourself during those cold winter months



## BX Series

### BX23S

Engine Type	Kubota, liquid-cooled, diesel, 3-cylinder
Horsepower (gross)*	21.6
Horsepower (PTO)*	17.7
Displacement (cu. in.)	54.8
Length (w/ 3-point)	99.0" w/ front guard
Width (min. tread)	45.1"
Height (w/ ROPS)	86.2"
Wheelbase	55.1"
Ground Clearance (front axle)	6.5"
Speed (mph) (front/reverse)	0–8.4 / 0–6.5
Transmission	HST, high-low gear shift (2 forward/reverse)
Tractor Weight (lbs.)	1,598

#### KEY ATTACHMENTS

Front Loader	Included
Backhoe	Included
Mid-Mount Mower	54", 60"
Easy-Over Mower	54", 60"

#### FRONT LOADER SPECIFICATIONS

	LA340 Pin-on Style Bucket	LA340S Two Lever Quick Attach Bucket
Maximum Lift Height	71"	
Lift Capacity at Pivot Pin (1500 mm height) (lbs.)	820	699
Breakout Force (bucket pivot pin) (lbf.)	1,407	1,286

#### BACKHOE SPECIFICATIONS

### BT603

Digging Depth	6' 2"
Transport Height	67.7"
Reach from Swing Pivot	102.8"
Bucket Size	8", 12", 16"
Thumb	Optional – Mechanical

#### MOWER SPECIFICATIONS

	MID-MOUNT		EASY-OVER	
Cutting Width	54"	60"	54"	60"
Discharge	Side			
Mounting Method	Suspended			
Adjustment of Cutting Height	Dial			

\* SAE J1995





## B01 Series

B2301HSD | B2601HSD | B2401DT | B2401DTN

### Ease of use, versatile, and reliable.

- › The Standard B Series can be equipped with a Kubota engineered and built Front End Loader, which is designed to meet all your task needs and can be removed from the tractor easily, no tools required
- › Kubota's Swift-Tach Loader, the LA435, allows for quick and easy removal and installation of the front loader without tools and without getting off the operator station
- › Available with a 54" or 60" mid-mount mower deck, the Standard B Series is designed to meet all your turf mowing needs
- › Available Kubota front hitch allows for easy attachment or removal of front blade, front sweeper and front snow blower
- › Both the B2301HSD and B2601HSD models are designed to be comfortable throughout the entire day with features such as an easy-to-use HST transmission, a large semi-flat operator deck, tilt steering and a high-back suspension seat with standard arm rests
- › The all new B2401 model provides power and functionality at an affordable price with features such as a gear-drive transmission, large semi-flat operator deck, easy-to-use control levers and the unmatched Kubota quality.
- › A Category I 3-point hitch with a quarter inching valve allows for a multitude of rear implements to meet any customer needs
- › New R14 tires give you the versatility of a R1 (AG) and R4 (Industrial Tire) but provide less vibration than the R1 and more traction than the R4

	B2301HSD	B2601HSD	B2401DT	B2401DTN
<b>Engine Type</b>	Kubota, liquid-cooled, diesel, 3-cylinder, Engine gross HP is 20.9HP for B2301 and 24.3HP for B2601		Kubota liquid cooled, diesel, 3-cylinder	
<b>Horsepower (gross)*</b>	20.9	24.3	21.9	
<b>Horsepower (PTO)*</b>	17.5	19.5	19.2	
<b>Displacement (cu. in.)</b>	68.5		68.5	
<b>Length (w/o 3-point)</b>	93.7"	94.9"	93.7"	92.8"
<b>Width (min. tread)</b>	45.3"	49"	48.8"	35.6"
<b>Wheelbase</b>	61.4"		61.4"	
<b>Ground Clearance</b>	12"	12.8"	12.2"	11"
<b>Speed (mph) (front/reverse) with standard tires</b>	0–11.8 / 0–8.9	0–12.7 / 0–9.5	0–11.7 / 0–6.0	0–10.9 / 0–5.6
<b>Rear-3 point hitch</b>	Category I			
<b>Lift capacity 24" behing LP lbs. (kg)</b>	1411		1290	
<b>Transmission (HST)</b>	HST (3-range)		Gear (9F/3R)	
<b>Tractor Weight (lbs.)</b>	1,566	1,632	1,521	1,433

## KEY ATTACHMENTS

<b>Front Loader</b>	LA435
<b>Backhoe</b>	BH70
<b>Mid-Mount Mower</b>	54", 60"

## FRONT LOADER SPECIFICATIONS

### LA435

<b>Maximum Lift Height at Pivot Pin</b>	78.5"
<b>Lift Capacity at Pivot Pin (1500 mm height) (lbs.)</b>	1,175
<b>Breakout Force (bucket pivot pin) (lbf.)</b>	2,146

## BACKHOE SPECIFICATIONS

### BH70

<b>Digging Depth (2 ft. flat bottom)</b>	85.2"
<b>Loading Height</b>	61.6"
<b>Reach from Swing Pivot</b>	116.8"
<b>Bucket Size</b>	10", 12", 16"
<b>Thumb</b>	Optional – Mechanical

## MID-MOUNT MOWER SPECIFICATIONS

<b>Cutting Width</b>	54", 60"
<b>Discharge</b>	Side
<b>Mounting Method</b>	Suspended
<b>Adjustment of Cutting Height</b>	Dial





All NEW LX Series

## LX Series

LX2610SUHSD | LX2610HSD | LX3310HSD

### Quality. Comfort. Versatility.

- › The all new LX2610HSD & LX3310HSD optimizes operator station comfort with deluxe features such as a wide, spacious flat deck, reclining high-back suspension seat with standard armrests, tilt-steering, cruise control, telescopic stabilizers, mid and rear PTO, integrated loader joystick and easy-to-use color-coded controls
- › The all new affordable LX2610SUHSD Special Utility model offers both value and quality in deluxe features such as the wide, spacious flat deck, rubber floor-mat, integrated loader joystick, easy-to-use color-coded controls, telescopic stabilizers and live-independent PTO
- › The new LX Series offers a wide variety of tires and sizes to fit your needs. The all new Goodyear R14T hybrid tires maximize versatility by providing more traction than R4 (Industrial) tires, but less vibration than R1 (Ag) tires for a smoother ride
- › Continuing Kubota's reputation for quality, the new LX Series is Kubota-built front to rear. Features include Kubota-built diesel engines such as the new 4-cylinder, turbo-charged common rail (CRS) diesel engine (LX3310 models only), a Kubota-built transmission, one-piece full-open steel hood, steel platform and steel fenders
- › The LX Series can be equipped with the new Kubota-built, performance-matched LA535 Front Loader. Features include a standard 2-lever Quick Coupler for universal attachments, an optional industry-exclusive Swift-tach kit with a One-Lever Quick Coupler for faster loader removal, and an optional industry-exclusive Mechanical Self-Leveling kit for easier material handling including pallet fork applications
- › Designed to be versatile, the LX Series can be equipped for a wide variety of applications. Additional implements available include Kubota-built 60" or 72" Mid-Mount Mower decks, the Kubota-built BH77 backhoe, Kubota's new 4-Point Quick Connect Front Hitch with front blades, front sweeper and front snow blower options, plus a full lineup of Land Pride's Performance-Matched implements

# LX Series

	LX2610SUHSD	LX2610HSD	LX3310HSD
Engine Type	Kubota liquid cooled, diesel, 3-cylinder, Direct Injection		Kubota liquid cooled, diesel, common rail system, turbo-charged, 4-cylinder, direct injection
Horsepower (gross)*	24.8		30.8
Horsepower (PTO)*	19.5		27
Displacement (cu. in.)	77.0		91.5
Transmission	HST: 3-range speed		
Speed (mph) (front/reverse) with standard tires	0-11.2 / 0-8.4		0-13.6 / 0-10.3
Rear 3-point hitch	Category I		
Lift capacity 24" behind lift point (lbs)	1,676		
Length	101.2"		
Width	53.7"		
Wheelbase	65.6"		
Min. Ground Clearance	14.6"		
Tractor Weight (lbs.)	1786		1918

## KEY ATTACHMENTS

Front Loader	LA535	
Backhoe	BH77	
Mid-Mount Mower	N/A	60" & 72"

## FRONT LOADER SPECIFICATIONS

	LA535
Maximum Lift Height at Pivot Pin	84.6"
Maximum Lift Capacity at Pivot Pin (1500 mm height) (lbs.)	1,324
Breakout Force (bucket pivot pin) (lbf.)	2,245

## BACKHOE SPECIFICATIONS

	BH77
Digging Depth (2 ft. flat bottom)	91.8"
Loading Height (length of dipper cyl. = 680 mm.)	66.7"
Reach from Swing Pivot	124.6"
Bucket Sizes	10", 12", 16", 24"
Thumb	Optional – Mechanical

## MID-MOUNT MOWER SPECIFICATIONS

Cutting Width	60" & 72"
Discharge	Side
Mounting Method	Floating
Adjustment of Cutting Height	Gauge wheel

\* SAE J1995





All NEW LX Series

## LX Series

LX2610HSDC | LX3310HSDC

## Quality. Comfort. Versatility. - never miss a beat with a cab year-round

- › The all new LX2610HSD & LX3310HSD factory-installed cabs optimize operator comfort year-round with deluxe features such as A/C and heater, front LED work lights, a wide, spacious flat deck, reclining high-back suspension seat with standard armrests, tilt-steering, cruise control, telescopic stabilizers, mid and rear PTO, integrated loader joystick and easy-to-use color-coded controls
- › The new LX Series offers a wide variety of tires and sizes to fit your needs. The all new Goodyear R14T hybrid tires maximize versatility by providing more traction than R4 (Industrial) tires, but less vibration than R1 (Ag) tires for a smoother ride
- › The LX Series can be equipped with the new Kubota-built, performance-matched LA535 Front Loader. Features include a standard 2-lever Quick Coupler for universal attachments, an optional industry-exclusive Swift-tach kit with a One-Lever Quick Coupler for faster loader removal, and an optional industry-exclusive Mechanical Self-Leveling kit for easier material handling including pallet fork applications
- › Continuing Kubota's reputation for quality, the new LX Series is Kubota-built front to rear. Features include Kubota-built diesel engines such as the new 4-cylinder, turbo-charged common rail (CRS) diesel engine (LX3310 models only), a Kubota-built transmission, one-piece full-open steel hood, steel platform and steel fenders
- › Kubota's new 4-Point Quick Connect Front Hitch allows for quick and easy attaching and removal of performance-matched front snow attachments with options such as front blades, a front sweeper and front snow blowers
- › Designed to be versatile, the LX Series can be equipped for a wide variety of applications. Additional implements available include Kubota-built 60" or 72" Mid-Mount Mower decks, the Kubota-built BH77 backhoe, and a full lineup of Land Pride's Performance-Matched implements

# LX Series

	LX2610HSDC	LX3310HSDC
<b>Engine Type</b>	Kubota liquid cooled, diesel, 3-cylinder, direct Injection	Kubota liquid cooled, diesel, common rail system, turbo-charged, 4-cylinder, direct injection
<b>Horsepower (gross)*</b>	24.8	30.8
<b>Horsepower (PTO)*</b>	19.5	27
<b>Displacement (cu. in.)</b>	77.0	91.5
<b>Transmission</b>	HST: 3-range speed	
<b>Speed (mph) (front/reverse) with standard tires</b>	0-11.2 / 0-8.4	0-13.6 / 0-10.3
<b>Rear 3-point hitch</b>	Category I	
<b>Lift capacity 24" behind lift point (lbs)</b>	1,676	
<b>Length</b>	103.9"	
<b>Width</b>	53.7"	
<b>Wheelbase</b>	65.6"	
<b>Min. Ground Clearance</b>	14.6"	
<b>Tractor Weight (lbs.)</b>	2293	2469

## KEY ATTACHMENTS

<b>Front Loader</b>	LA535
<b>Backhoe</b>	BH77
<b>Mid-Mount Mower</b>	60" & 72"

## FRONT LOADER SPECIFICATIONS

	LA535
<b>Maximum Lift Height at Pivot Pin</b>	84.6"
<b>Maximum Lift Capacity at Pivot Pin (1500 mm height) (lbs.)</b>	1,324
<b>Breakout Force (bucket pivot pin) (lbf.)</b>	2,245

## BACKHOE SPECIFICATIONS

	BH77
<b>Digging Depth (2 ft. flat bottom)</b>	91.8"
<b>Loading Height (length of dipper cyl. = 680 mm.)</b>	66.7"
<b>Reach from Swing Pivot</b>	124.6"
<b>Bucket Sizes</b>	10", 12", 16", 24"
<b>Thumb</b>	Optional – Mechanical

## MID-MOUNT MOWER SPECIFICATIONS

<b>Cutting Width</b>	60" & 72"
<b>Discharge</b>	Side
<b>Mounting Method</b>	Floating
<b>Adjustment of Cutting Height</b>	Gauge wheel

\* SAE J1995





## Standard L01 Series

L2501F/DT/HST | L3301F/DT/HST L3901F/DT/HST  
L4701F/DT/HST

### Affordable, durable, versatile, and easy to use.

- › All L01 Series can be equipped with a Kubota engineered and built Front End Loader, designed to safely and efficiently meet all your front loader needs; add to this the fact that all L01 Front Loaders come standard with tool-less front loader removal, and you know you have the best tool for the job
- › All L01 Series can be equipped with a backhoe that has been engineered and built by Kubota
- › Available with an efficient and cost-effective gear transmission or an easy-to-use hydrostatic transmission (HST)
- › With four different horsepower models available in 2- or 4-wheel drive, you are sure to find an L01 that can fit your specific needs
- › Semi-flat operator station with ergonomic controls, suspension seat, and an easy-to-read dash panel increases operator comfort and decreases fatigue
- › Strong cast steel axles and rear end housing along with steel hood and fenders create a tough, durable tractor that is sure to provide years of use, even in the toughest job conditions

## Standard L01 Series

	L2501F (2WD) / DT (4WD) / HST (4WD)	L3301F (2WD) / DT (4WD) / HST (4WD)	L3901F (2WD) / DT (4WD) / HST (4WD)	L4701F (2WD) / DT (4WD) / HST (4WD)
<b>Engine Type</b>	Kubota, liquid-cooled, diesel, 3-cylinder		Kubota, liquid-cooled, diesel, 3-cylinder	Kubota, liquid-cooled, diesel, 4-cylinder
<b>Horsepower (gross)*</b>	24.8	33	37.5	47.3
<b>Horsepower (PTO)*</b>	20.5 (F/DT) 19.0 (HST)	27.7 (F/DT) 26.2 (HST)	32.1 (F/DT) 30.6 (HST)	39.3 (F/DT) 37.8 (HST)
<b>Displacement (cu. in.)</b>	100.4	111.4		148.5
<b>Transmission</b>	Gear Drive or HST (3-range)			
<b>Width (min. tread)</b>	55.1"			62.4"
<b>Wheelbase (2WD/4WD)</b>	63.3"			72.8"/72.6"
<b>Ground Clearance</b>	13.6" 2WD / 13.4" 4WD			15.2"
<b>Speed (mph) (front/reverse)</b>	0.9–10.7 / 1.2–3.9 HST: 0–11.5 / 0–10.3	1.1–13.2 / 1.1–13.1 HST: 0–14.1 / 0–12.7		1.4–14.9 / 1.3–14.3 HST: 0–15.8 / 0–14.2
<b>Tractor Weight (lbs.)</b>	2,425 / 2,601 / 2,623	2,557 / 2,734 / 2,778	2,590 / 2,767 / 2,778	3,219 / 3,296 / 3,307

### KEY ATTACHMENTS

<b>Front Loader</b>	LA525	LA765
<b>Backhoe</b>	BH77	BH92

### FRONT LOADER SPECIFICATIONS

	LA525	LA765
<b>Maximum Lift Height at Pivot Pin</b>	94.3"	105.2"
<b>Lift Capacity at Pivot Pin (Max Height) (lbs.)</b>	1,082	1,684
<b>Lift Capacity at Pivot Pin (1500 mm height) (lbs.)</b>	1,431 (L2501) 1,490 (L3301/L3901)	2,154
<b>Breakout Force (bucket pivot pin) (lbf.)</b>	2,373 (L2501) 2,462 (L3301/L3901)	3,153

### BACKHOE SPECIFICATIONS

	BH77	BH92
<b>Digging Depth (2 ft. flat bottom)</b>	91.8"	109.8"
<b>Loading Height</b>	66.7"	84.3"
<b>Reach from Swing Pivot</b>	124.6"	150.4"
<b>Bucket Sizes</b>	10", 12", 16", 24"	12", 16", 18", 24", 30", 36"
<b>Thumb</b>	Optional – Mechanical	Optional – Mechanical or Hydraulic

\* SAE J1995





NEW L60LE Series

## L60LE Series

L3560LE | L4060LE

### Affordability. Quality. Comfort.

- › New to the Kubota lineup, the L60LE series with HST Plus Transmission provides deluxe Grand L features at an affordable price
- › With ROPS and cab options ranging from 37.0 to 42.0 gross horsepower, Kubota's L60LE Series offers four affordable horsepower models to choose from based on your application and implements requirements
- › The L60LE Series is equipped with a heavy duty front axle, cast steel transmission and rear end, as well as steel hood and fenders, making them built to last
- › HST Plus Transmission comes standard with productivity-increasing features like Stall Guard, H-DS (Hydraulic-Dual Speed), Auto-Throttle Advance, and an engine Throttle-Up Button — all of these features can be turned on or off easily based on the operator's needs and preferences
- › All L60LE Series have a deluxe operator's station that includes a premium seat with armrests and adjustable suspension seat, air-ride seat option, tilt steering, Kubota IntelliPanel dash display, and a flat operator station with excellent legroom. Additionally, enjoy year round comfort with the L60LE Series wide, spacious deluxe cab models
- › Performance matched Kubota front loaders, backhoes, and front mounted snow attachments available plus a full line up of Land Pride performance matched implements

# L60LE Series

## L3560HST-LE (4WD) / L3560HSTC-LE (4WD, Cab)

## L4060HST-LE (4WD) / L4060HSTC-LE (4WD, Cab)

<b>Engine Type</b>	Kubota, liquid-cooled, diesel, 3-cylinder	Kubota, liquid-cooled, diesel, 4-cylinder
<b>Horsepower (gross)*</b>	37	42
<b>Horsepower (PTO)*</b>	28 (HST/HSTC)	32.5 (HST/HSTC)
<b>Displacement (cu. in.)</b>	114.4	148.5
<b>Transmission</b>	HST PLUS (3-range)	
<b>Width (min. tread)</b>	59.8"	66.5"
<b>Wheelbase</b>	71.1"	74.6"
<b>Min. Ground Clearance</b>	13.5"	14.4"
<b>Tractor Weight (lbs.) (ROPS or cab)</b>	3,505 (HST) / 3,880 (HSTC)	3,759 (HST) / 4,134 (HSTC)

### KEY ATTACHMENTS

<b>Front Loader</b>	LA555/LA805 <sup>1</sup>	LA805
<b>Backhoe</b>	BH77 <sup>2</sup> /BH92	BH92

### FRONT LOADER SPECIFICATIONS

	<b>LA555</b>	<b>LA805</b>
<b>Maximum Lift Height at Pivot Pin</b>	96.4"	104.7"
<b>Lift Capacity at Pivot Pin (Max Height) (lbs.)</b>	1,190	1,715
<b>Lift Capacity at Pivot Pin (1500 mm height) (lbs.)</b>	1,603	2,202
<b>Breakout Force (bucket pivot pin) (lbf.)</b>	2,677	3,301
<b>Mechanical 2-Lever Quick Coupler</b>	Standard	

### BACKHOE SPECIFICATIONS

	<b>BH77</b>	<b>BH92</b>
<b>Digging Depth (2 ft. flat bottom)</b>	91.8"	109.8"
<b>Loading Height</b>	66.7"	84.3"
<b>Reach from Swing Pivot</b>	124.6"	150.4"
<b>Bucket Sizes</b>	10", 12", 16", 24"	12", 16", 18", 24", 30", 36"
<b>Thumb</b>	Optional – Mechanical	Optional – Mechanical or Hydraulic



## L60 HST ROP's VS L60LE HST ROP's Standard Feature Comparison

Standard Feature	L60 Series (HST ROP's Models)	L60LE Series (HST ROP's Models)
Wide, Spacious Flat Operator Platform	✓	✓
Rubber Floor Mat	✓	✓
Deluxe Seat w/ Mechanical Suspension and Armrests	✓	✓
Tilt Steering	✓	✓
<b>HST Plus Transmission:</b>		
Hydro Dual Speed		
Stall Guard	✓	✓
Throttle-Up		
Auto Throttle Advance		
HST Response Control		
Telescoping Lower Link Ends	✓	✓
Telescoping Stabilizers	✓	
Cruise Control	✓	
Stationary PTO Switch	✓	

## L60 CAB's VS L60LE CAB's Standard Feature Comparison

Standard Feature	L60 Series (HST CAB Models)	L60LE Series (HST CAB Models)
Grand L Factory Cab	✓	✓
Heating and Air Conditioning	✓	✓
Deluxe Seat w/ Mechanical Suspension and Armrests	✓	✓
Tilt Steering	✓	✓
<b>HST Plus Transmission:</b>		
Hydro Dual Speed		
Stall Guard	✓	✓
Throttle-Up		
Auto Throttle Advance		
HST Response Control		
Telescoping Link Ends Stabilizers	✓	✓
Cruise Control	✓	
Front Work Lights		
Left and Right Side Mirrors		
Stationary PTO Switch	✓	







## Grand L60 Series

L3560 | L4060 | L4760 | L5060 | L5460 | L6060

### Unmatched comfort and full-featured design.

- › All Grand L60 Series Tractors can be equipped with performance-matched Front End Loaders and Backhoes that are engineered and built to maximize performance and increase efficiency
- › Available 4-Point Front hitch offers increased versatility. Customers can quickly and easily add a front blade, front snow blower, front broom, or front flail mower to their Grand L60
- › Available with an HST Plus (Hydrostatic Transmission), GST (Glide Shift Transmission), or FST (Fully Synchronized Main and Shuttle Transmission), the Kubota Grand L60 Series offers the choices you need to maximize your productivity
- › Factory Cab (heat and A/C) is available on all Hydrostatic Transmission (HST) models
- › HST Plus Transmission comes standard with productivity-increasing features like Stall Guard, H-DS (Hydraulic-Dual Speed), Auto-Throttle Advance, and an engine Throttle-Up Button — all of these features can be turned on or off easily based on the operator's needs and preferences
- › All L60 Series have a deluxe operator's station that includes a premium seat with armrests and adjustable suspension seat, air-ride seat option, tilt steering, Kubota IntelliPanel dash display, and a flat operator station with excellent legroom — these key features and many more help to make the Grand L60 a pleasure to operate

## Grand L60 Series

	L3560DT (4WD) / GST (4WD) / HST (4WD) / HSTC (4WD, Cab)	L4060DT (4WD) / GST (4WD) / HST (4WD) / HSTC (4WD, Cab)	L4760GST (4WD) / HST (4WD) / HSTC (4WD, Cab)
<b>Engine Type</b>	Kubota, liquid-cooled, diesel, 3-cylinder		Kubota, liquid-cooled, diesel, 4-cylinder
<b>Horsepower (gross)*</b>	37	42	49
<b>Horsepower (PTO)*</b>	29.5 (DT/GST) 28 (HST/HSTC)	34 (DT/GST) 32.5 (HST/HSTC)	41 (GST) 39.5 (HST/HSTC)
<b>Displacement (cu. in.)</b>	114.4	148.5	
<b>Transmission</b>	FST: 8F/8R GST: 12F/8R HST PLUS (3-range)		GST: 12F/8R HST PLUS (3-range)
<b>Width (min. tread)</b>	59.8"	66.5"	
<b>Wheelbase</b>	71.1"	74.6"	
<b>Min. Ground Clearance</b>	13.5"	14.4"	14.2"
<b>Tractor Weight (lbs.) (ROPS or cab)</b>	3,483 (DT) / 3,494 (GST) 3,505 (HST) / 3,880 (HSTC)	3,737 (DT) / 3,748 (GST) 3,759 (HST) / 4,134 (HSTC)	3,836 (GST) / 3,847 (HST) 4,222 (HSTC)

### KEY ATTACHMENTS

<b>Front Loader</b>	LA555/LA805 <sup>1</sup>	LA805	LA1055
<b>Backhoe</b>	BH77 <sup>2</sup> /BH92	BH92	

### FRONT LOADER SPECIFICATIONS

	LA555	LA805	LA1055
<b>Maximum Lift Height at Pivot Pin</b>	96.4"	104.7"	112.7"
<b>Lift Capacity at Pivot Pin (Max Height) (lbs.)</b>	1,190	1,715	2,361
<b>Lift Capacity at Pivot Pin (1500 mm height) (lbs.)</b>	1,603	2,202	2,974
<b>Breakout Force (bucket pivot pin) (lbf.)</b>	2,677	3,301	4,074
<b>Mechanical 2-Lever Quick Coupler</b>	Standard		

### BACKHOE SPECIFICATIONS

	BH77	BH92
<b>Digging Depth (2 ft. flat bottom)</b>	91.8"	109.8"
<b>Loading Height</b>	66.7"	84.3"
<b>Reach from Swing Pivot</b>	124.6"	150.4"
<b>Bucket Sizes</b>	10", 12", 16", 24"	12", 16", 18", 24", 30", 36"
<b>Thumb</b>	Optional – Mechanical	Optional – Mechanical or Hydraulic

\* SAE J1995; 1 - LA805 must be used in conjunction with BH92 due to weight distribution; 2 - BH77 cannot be used on L3560HSTC model

## Grand L60 Series *(continued)*

	L5060GST (4WD)	L5460HST (4WD) / HSTC (4WD, Cab)	L6060HST (4WD) / HSTC (4WD, Cab)
Engine Type	Kubota, liquid-cooled, diesel, 4-cylinder		
Horsepower (gross)*	52	56	62
Horsepower (PTO)*	44	46.5	53
Displacement (cu. in.)	148.5		
Transmission	12F/8R	HST PLUS (3-range)	
Width (min. tread)	67.3"		
Wheelbase	75.4"		
Min. Ground Clearance	15.4"		
Tractor Weight (lbs.) (ROPS/cab)	3,979 / N/A	3,990 (HST) / 4,365 (HSTC)	

### KEY ATTACHMENTS

Front Loader	LA1055
Backhoe	BH92

### FRONT LOADER SPECIFICATIONS

	LA1055
Maximum Lift Height at Pivot Pin	112.7"
Lift Capacity at Pivot Pin (Max Height) (lbs.)	2,361
Lift Capacity at Pivot Pin (1500 mm height) (lbs.)	2,974
Breakout Force (bucket pivot pin) (lbf.)	4074
Mechanical 2-Lever Quick Coupler	Standard

### BACKHOE SPECIFICATIONS

	BH92
Digging Depth (2 ft. flat bottom)	109.8"
Loading Height	84.3"
Reach from Swing Pivot	150.4"
Bucket Sizes	12", 16", 18", 24", 30", 36"
Thumb	Optional – Mechanical or Hydraulic

\* SAE J1995









NEW MX Series

## MX Series

MX5400 | MX6000

### Affordable. Comfort. Versatility.

- › Achieve year-round comfort with the all new MX cab. This wide, spacious cab features a flat platform with plenty of legroom, tilt-steering, A/C & heating, easy access and use of operator levers and controls as well as the ability to accessorize it to fit your needs
- › Kick back and relax in the new MX ROPS with features such as a wide, spacious flat rubber floor-mat deck, suspension seat and easy-to-use, ergonomically located color-coded controls
- › Whether your needs are to maximize productivity with the cost-effective gear-drive transmission, or to have smoother performance, greater operator comfort and ease-of use with the HST Transmission, the MX series offers you affordable choices in both CAB and ROPS models
- › Specifically designed to match the MX Series for maximum performance, the Kubota-built LA1065 Front Loader provides the power needed for heavy-duty jobs with its high lift capacity, lift height and breakout force
- › Versatility is unmatched with the new MX Series. With a tight turning radius, Cat. 1 & 2 Three-Point Hitch, Kubota's LA1065 Front Loader and BH92 Backhoe plus a full lineup of Land Pride performance-matched implements, the MX Series was made for both big and small applications
- › Affordability isn't just the upfront purchase, it's there for the long haul. The MX Series feature strong, cast steel axles and rear end housing, a steel platform and fenders, a one-piece full-open steel hood, the world renowned Kubota Diesel Engine and protected hydraulic hoses. The MX Series is built to minimize maintenance cost by withstanding heavy loads or potential wear and tear over the years



## New MX Series

MX5400F (2WD) / DT (4WD) / DTC (4WD, Cab) / HST  
(4WD) / HSTC  
(4WD, Cab)MX6000HST (4WD) / HSTC  
(4WD, Cab)

Engine Type	Kubota liquid cooled, diesel, CRS, Direct Injection	
Horsepower (gross)*	55.5 (F/DT/DTC) / 57.0 (HST/HSTC)	63.4
Horsepower (PTO)*	46.5 / HST: 39.0	51.7
Displacement (cu. in.)	148.6	
Transmission	F/DT: Partially synchronized (3rd & 4th) Shuttle: Synchronized HST: Hydrostatic pedal operate	HST: Hydrostatic pedal operate
Number of Speeds (forward/reverse)	F/DT: 8F/8R HST: 3-range speed	3-range speed
Hydraulic Flow (gpm) (remotes/3-point hitch)	9.5	
Width	69.7"	
Wheelbase	74.6"	
Min. Ground Clearance	15.2"	
Tractor Weight (lbs.)	3,474 / 3,716 / 4,251 / 3,734 / 4,268	3,734 / 4,268

## KEY ATTACHMENTS

Front Loader	LA1065
Backhoe	BH92 <sup>1</sup>

## FRONT LOADER SPECIFICATIONS

	LA1065
Maximum Lift Height at Pivot Pin	111.2"
Lift Capacity at Pivot Pin (Max Height) (lbs.)	2,275
Lift Capacity at Pivot Pin (1500 mm height) (lbs.)	2,864
Breakout Force (bucket pivot pin) (lbf.)	3,981

## BACKHOE SPECIFICATIONS

	BH92 <sup>1</sup>
Digging Depth (2 ft. flat bottom)	109.8"
Loading Height (length of dipper cyl. = 680 mm)	84.3"
Reach from Swing Pivot	150.4"
Bucket Sizes	12", 16", 18", 24", 30", 36"
Thumb	Optional – Mechanical or Hydraulic

<sup>1</sup> BH92 Backhoe cannot be used with cab models

\* SAE J1995



## M60 Series

M5660SU | M6060 | M7060

### These diesel tractors were designed and built with both you and the environment in mind.

- › Kubota's revolutionary Common Rail System (CRS) with Exhaust Gas Recirculation system (EGR) and Diesel Particulate Filter (DPF) muffler combine more torque at low RPM with less emissions and better fuel efficiency
- › These engines take tractor performance to the next level and comply with the latest Tier 4 Final EPA emission regulations
- › State-of-the-art external hydraulic cylinders improve lifting power and offer easier maintenance
- › The innovative and stylish design of the cab gives the operator a more comfortable and spacious environment year-round, with a curved upper windshield to increase upward visibility and rounded glass—ideal for long days inside the cab
- › Engines feature electronic control of engine RPM—with the push of a button, the system keeps engine revolution constant, making working with PTO-driven implements much more efficient
- › Hydraulic Shuttle Transmission is standard on all models for effortless shifting between forward and reverse
- › The M5660SU offers an ample 17.2-gallon (65 L) capacity fuel tank to keep you working longer between fill-ups

# M60 Series

	M5660SUH (2WD) / SUHD (4WD)	M6060HFC (2WD, Cab) / HD (4WD) / HDC (4WD, Cab)	M7060HFC (2WD, Cab) / HD (4WD) / HDC (4WD, Cab) / HD12 (4WD) / HDC12 (4WD, Cab)
<b>Engine Type</b> (Kubota Injection, diesel)	V2403-CR-TE4, 4-cylinder, Common Rail System	E-CDIS, V3307-CR-TE4, 4-cylinder	E-CDIS, V3307-CR-TE4, 4-cylinder
<b>Horsepower (gross)*</b>	58.7	66.4	74.3
<b>Horsepower (PTO)*</b>	50	56	64
<b>Displacement (cu. in.)</b>	148.5	203.0	
<b>EPA Emission</b>	Tier 4 Final		
<b>Alternator (amps)</b>	45	45 (ROPS) / 60 (cab) (100 optional)	
<b>Transmission/Shuttle</b>	Fully synchronized hydraulic shuttle		
<b>Height (top of ROPS / cab)</b>	95.3"	96.9" / 100.6"	97.2" / 101"
<b>Overall Width</b>	73.2"	73"	
<b>Overall Length (2WD / 4WD)</b>	138.7" / 136"	142.7" / 138"	
<b>Crop Clearance (front axle)</b>	16.9"	18.1"	
<b>Wheelbase (2WD / 4WD)</b>	82" / 80.7"	84.4" / 83.1"	
<b>Std. Speeds (forward/reverse)</b>	F8/R8	F8/R8	F8/R8, F12/R12
<b>Tread Width</b> (2WD / 4WD) (front)	55.9", 71.7" / 51.2", 55.1"	55.9–71.7" / 55.9, 59.8"	
<b>Tread Width (rear)</b>	52.0", 67.7"	55.9–67.7"	
<b>Turning Radius</b> (2WD / 4WD) (w/o brake)	11.1' / 12.8'	10.8' / 11.8'	
<b>Tire Size (front)</b>	6.5–16 / 8.3–24	7.5–16 / 9.5–24	
<b>Tire Size (rear)</b>	14.9–28	16.9–28	16.9–30
<b>Hydraulic (gpm)</b>	10.6	11.0	11.0 (16.0 on 12-speed models)
<b>Hydraulic PTO (rpm)</b>	540 (540/540E optional)		540 (540/540E optional) (540/540E standard on 12-speed)
<b>Category I/II, 3-Point Hitch</b>	Yes		
<b>Lift Capacity at 24 in.</b> <b>behind lift points (lbs.)</b>	3,307		
<b>Tractor Weight – ROPS Models</b> (2WD / 4WD) (lbs.)	4,189 / 4,387	N/A / 5,005	N/A / 5,027
<b>Tractor Weight – Cab Models</b> (2WD / 4WD) (lbs.)	N/A	5,226 / 5,358	5,248 / 5,380
<b>Compatible Front Loader</b>	LA1154SU	LA1154	

\* SAE J1995







## M4 Series

M4D-061 | M4-071 | M4D-071

### Two deluxe models and one standard model, all featuring wide cabs ergonomically designed to maximize your comfort and productivity.

- › The upgraded, category II cab is one of the largest in its class; it comes standard with a high visibility roof panel, is pressurized for dust resistance, and designed for optimal functionality
- › The economy PTO reduces fuel consumption and operating cost
- › With 16.7 gallons per minute of hydraulic flow, operators can complete more work in less time, especially for loader work
- › The interior console light delivers better visibility of controls while operating at night. With an electro hydraulic shuttle and Declutch button, Kubota delivers transitions between gears with simplicity and ease
- › Two remote valves, One Self-Canceling Detent and one Float valve, come standard on the Deluxe models
- › The M4 Series tractors are built tough with over 3300 pounds of 3-point lift capacity at 24 in. behind the lift points
- › The instructor seat comes standard on the Deluxe model and is optional on the Standard model

# M4 Series

	M4D-061HDC12 / 4WD	M4-071HDC12 / 4WD	M4D-071HDC12 / 4WD
<b>Engine</b>	V3307-CR-TE4		
<b>No. of Cylinders/Aspiration</b>	4 / turbocharged		
<b>Horsepower (gross)*</b>	65.4		73.2
<b>Horsepower (PTO)*</b>	52		60
<b>Total Displacement (cu. in.)</b>	203		
<b>Rated Engine (rpm)</b>	2,400		
<b>Fuel Tank Capacity (gal.)</b>	23.8		
<b>Alternator (amps)</b>	130		
<b>Transmission No. of Speeds</b>	F12 / R12 (option: F18 / R18 with Creep)		
<b>Shuttle Shift</b>	Hydraulic shuttle		
<b>4WD Clutch Type</b>	Electro-hydraulic on-the-go	Mechanical on-the-go	Electro-hydraulic on-the-go
<b>Compatible Front Loader</b>	LA1154		
<b>HYDRAULICS</b>			
<b>Pump Capacity (3-Point Hitch) (gpm)</b>	16.7		
<b>3-Point Hitch (Category II)</b>	Telescopic lower link ends, telescopic stabilizers		
<b>Control System</b>	Position, draft (top link sensing) & mixed control		
<b>Lift Capacity (lbs.) (24 in. behind lift point ISO)</b>	3,307		
<b>Standard Remote Valves</b>	2 (SCD / FD) Max 3	1 (SCD), Max 3	2 (SCD / FD), Max 3
<b>PTO Speed (rpm)</b>	540 / 540E	540 (540/540E: OPT)	540 / 540E
<b>DIMENSIONS AND WEIGHT</b>			
<b>Wheelbase</b>	84.1"		
<b>Overall Width</b>	75.6"		
<b>Overall Length</b>	144"		
<b>Overall Height (top of ROPS or cab)</b>	101"		
<b>Weight (lbs.)</b>	6,117		

\* 97/68/EC







## M5 Series

M5-091 | M5-111

### The M5 Series tractors have been engineered inside and out to be spacious and versatile.

- › The M5-091 and M5-111 combine Kubota's DPF (Diesel Particulate Filter) with SCR (Selective Catalytic Reduction) technologies to create an exceptionally clean engine that meets Tier 4 Final regulations
- › Using the Constant RPM Management switch keeps engine revolution constant, preventing drops in PTO speed and enabling stable, more efficient operation
- › We bring you luxury with the Ultra Grand Cab II: a fully enclosed cab with air conditioning, a sunroof with a retractable sunshade, rubber cushions under the cab, and an optional instructor's seat for new levels of comfort
- › Electro Hydraulic Shuttle for smooth shifting between forward and reverse eliminates the need to depress the clutch every time you change directions
- › Hydraulic Wet Disc Brakes increase overall tractor longevity
- › Bevel-gear front axle provides greater all-around maneuverability
- › A category II 3-point hitch allows fast and simple attachment of rear-mounted implements
- › Floating lift rods come standard for a smoother ride and enhanced traction while using the 3-point hitch



# M5 Series

	M5-091						M5-111						
	HF (ROPS)	HFC (Cab)	HD (ROPS)	HD12 (ROPS)	HDC (Cab)	HDC12 (Cab)	HF (ROPS)	HFC (Cab)	HD (ROPS)	HD12 (ROPS)	HDC (Cab)	HDC12 (Cab)	HDC24 (Cab)
<b>2WD/4WD</b>	2WD		4WD				2WD		4WD				
<b>Engine</b>	V3800CR-TIEF4												
<b>No. of Cylinders/Aspiration</b>	4 / turbocharged												
<b>Horsepower (gross)*</b>	92.5						105.6						
<b>Horsepower (PTO)* at rated engine RPM</b>	76						89						
<b>Total Displacement (cu. in.)</b>	230												
<b>Rated Engine (rpm)</b>	2,400	2,600	2,400		2,600		2,400	2,600	2,400			2,600	
<b>Fuel Tank Capacity (gal.)</b>	27.7												
<b>Alternator (amps)</b>	60	80	60		80		60	80	60			80	
<b>Transmission No. of Speeds</b>	F8/R8		F12/ R12	F8/R8	F12/ R12		F8/R8		F12/ R12	F8/R8	F12/ R12	F24/ R24	
<b>Shuttle Shift</b>	Electro-hydraulic shuttle												
<b>Max. Traveling Speed (mph)</b>	17.7	19.2	17.7	22.6	19.2	22.6	18.6	20.1	18.6	23.6	20.1	23.6	23.4
<b>Main Clutch Type</b>	Multiple wet disc												
<b>Compatible Front Loader</b>	LA1854												

## HYDRAULICS

<b>Rater Flow at Remote Outlets (gpm)</b>	15.7	17.0	15.7		17.0		15.7	17.0	15.7			17.0	
<b>3-Point Hitch (Category II)</b>	Telescopic lower link ends, telescopic stabilizers												
<b>Control System</b>	Position, draft (top link sensing) & mixed control												
<b>Lift Capacity (lbs.) (24 in. behind lift point ISO)</b>	4,630		6,063	4,630	6,063		4,630		6063	4,630		6063	
<b>Standard Remote Valves</b>	2 (Max 3)												
<b>PTO Speed (rpm)</b>	540 <sup>1</sup>		540/ 540E <sup>2</sup>	540 <sup>1</sup>	540/ 540E <sup>2</sup>		540 <sup>1</sup>		540/ 540E <sup>2</sup>	540 <sup>1</sup>		540/540E <sup>2</sup>	

## DIMENSIONS AND WEIGHT

<b>Wheelbase</b>	90"		88.6"				90"		88.6"				
<b>Overall Width</b>	77.2"		78.3"				78.3"		79.1"				
<b>Overall Length</b>	156.5"		155.9"				156.5"		155.9"				
<b>Overall Height (top of ROPS or cab)</b>	98.9"	100.2"	98.9"		100.2"		99.8"	101.2"	99.8"			101.2"	
<b>Weight (lbs.)</b>	5,732	6,482	6,151		6,900		5,865	6,615	6,283			7,033	

\* 97/68/EC 1 – Optional 540E, Optional 540/1000; 2 – Optional 540/1000



## M6S Series

M6S-111

**A clean-running engine with the power and speeds to tackle a wide range of jobs, and an ergonomic design for comfort during those long hours.**

- › Technology-driven V-3800 Tier 4 Final engine features a Common Rail System (CRS), intercooler, and Exhaust Gas Recirculation (EGR), and uses a Diesel Particulate Filter (DPF) and Selective Catalytic Reduction (SCR) for minimized emissions
- › Design of the main shift lever provides a comfortable, easy-to-use feel and better visibility of the lever's shift stages (Hi-Lo, etc.) to increase operator efficiency
- › Kubota Swing Shift provides you access to 16 speeds, and an optional creep provides eight additional slower speeds
- › Swing Shift Plus Transmission models give you 32F/32R speeds and allow you to operate the Swing Shift as well as the Dual speed with just one lever
- › De-clutch button is available on all models, allowing you to shift a gear without using the clutch pedal
- › This tractor is ready to accept implements requiring multiple valves with the M6S now having two standard rear remote valves — one self-canceling detent valve and one floating detent valve — and an optional third remote valve

## M6S Series

	M6S-111SHF (2WD) / SHC (2WD, Cab)	M6S-111SHD (4WD) / SHDC (4WD, Cab) / SHDC2 (4WD, Cab)	M6S-111SDS2 (4WD) / SDSC (4WD, Cab) / SDSC2 (4WD, Cab)
Engine	V-3800-CR-TIEF4		
No. of Cylinders / Aspiration	4 / Turbocharger with intercooler		
Total Displacement (cu. in.)	230		
Rated Speed (rpm)	2,600		
Horsepower (gross)*	114.1		
Horsepower (PTO)* at rated engine RPM	95		
PTO Speed (rpm)	540 (540/1000 factory option)		
Fuel Tank Capacity (gal.)	46.2		
Alternator (amps)	80		
Transmission – No. of Speeds	16F/16R (24F/24R w/creep)	32F/32R (48F/48R w/creep)	
Shuttle Shift	Electro-hydraulic		
Max. Traveling Speed (mph)	23.34 (ROPS) / 23.16 (cab)		
Main Clutch Type	Wet disc electro-hydraulic operated		

### HYDRAULICS

Type	Internal cylinder (external cylinder option)		
Control System	Top link		
Lift Capacity (lbs.) (24 in. behind lift point OECD)	3,858 (5732 optional)		
Rear remotes	2 standard (3rd optional)		

### DIMENSIONS AND WEIGHT

Wheelbase	95.9"		
Overall Width (min. tread)	91.5" (ROPS) / 92.5" (cab)		
Overall Length	163.2"		
Overall Height (top of ROPS / cab)	105.1" / 105.5"		
Weight (ROPS / cab) (lbs.)	6,834 / 7,341	8,466 / 8,973	

\* 97/68/EC







## M6 Series

M6-101 | M6-111 | M6-131 | M6-141

### Take full advantage of the M6 Series tractors' performance with control, maneuverability, and clean engines that don't sacrifice power.

- › Measuring 65.5" by 61.4", the Grand X Cab offers more headroom and legroom for a higher level of comfort and greater visibility
- › All M6 models include the 24F/24R Intelli-Shift Transmission, featuring an 8-speed power shift with a 3-speed hi/mid/low range for 24 gears in forward and reverse
- › Tilt and telescopic power steering
- › The M6-141 DTSC-F model comes with a front suspended axle which provides the operator with a smoother ride, increased tractor stability and higher productivity
- › When the M6 Series' Work Kruiise is turned on, there is no need for throttle adjustment
- › A Kubota-exclusive bevel-gear front axle ensures easy tight-turning radius and excellent maneuverability
- › M6 series tractors have 18.7 gpm (M6-101/M6-111) and 20.4 gpm (M6-131/M6-141) hydraulic pumps



## M6 Series

	M6-101	M6-111	M6-131	M6-141
Engine	V3800-TI-CRS		V6108-TI-CRS	
No. of Cylinders / Aspiration	4 / Turbocharger with intercooler			
Total Displacement (cu. in.)	230		374	
Rated Speed (rpm)	2,600		2,200	
Horsepower (gross)*	104.5	114.1	131.6	141.4
Horsepower (PTO)*	82	92	104	114
Fuel Tank Capacity (gal.)	50.2			
Alternator (amps)	130			
Transmission – No. of Speeds	Intelli-Shift – 24F/24R (32F/32R w/ creep)			
Main Gear Shift	8-speed power shift			
Range Gear Shift	3-speed mechanical			
Shuttle Shift	Microprocessor-controlled electro-hydraulic shuttle			
Max. Traveling Speed (mph)	20.72		22.73	
Main Clutch Type	Multiple wet disc			

### HYDRAULICS

3-Point Hitch (Category II)	Telescopic lower link ends, telescopic stabilizers			
Control System	Electronic draft control, lower link sensing			
Lift Capacity (lbs.) (24 in. behind lift point OECD)	6,834 (9,447 optional)			
Remote Valves (mechanical)	2 standard (3rd, 4th optional) w/ built-in flow control			
PTO Speed (rpm)	540 / 1,000			

### DIMENSIONS AND WEIGHT

Wheelbase	95.9"	105.9"	105.9" / 105.5"	
Overall Width (min. tread)	82.7"	85.8"		
Overall Length	165.4"	171.7"	171.7", 171.3"	
Overall Height	109.8"	111.8"	113.2"	
Weight (lbs.)	9,601	9,788	10,945	10,945 / 11,387

### FRONT LOADER SPECIFICATIONS

	LA1955***	LA2255***
Maximum Lift Height	145.7"	161.4"
Overall Height in Carrying Position	66.9"	74"
Lift Capacity at High Position (full height @ pivot pin) (lbs.)	4,299	4,877
Roll Back Angle	40	
Maximum Dump Angle	63° / 52° (at height position)	60° / 50° (at height position)

\* 97/68/EC \*\*\* Euro Quick Attach Coupler Type optional





## M7 Series Gen 2

M7-132 | M7-152 | M7-172

### M7 Generation 2 Tractors: More power, productivity, and comfort with the same Kubota quality, as well as new options and features for your operation.

- › M7 Gen 2 Deluxe models with high performing CCLS hydraulics, mechanical rear remotes, and optional bar axles. High performance with less electronics and simplified controls.
- › 30 x 15 with available factory installed creep for a total of 54 forwards gears, transmissions with 5 ranges and 6 speeds. Widening the working range for increased in-field performance. Enhanced auto shifting with Range Advance for better travel operation.
- › Kubota V6108 engines with redefined torque curves and lower operating RPM for increased torque, performance, and fuel economy.
- › Improved KVT transmission control with more responsive multifunction handle and smoother shuttle operation.
- › All M7 Gen 2 tractors have loader ready features standard.
- › Optional front field installed and PTO available on all M7-2 models.
- › 7" K-Monitor and optional 12" K-Monitor Pro add fingertip control for all tractor functions and ISOBus compatibility on all Premium and Premium KVT tractors.
- › Models Available:  
M7-132, M7-152 & M7-172 Deluxe  
M7-152 & M7-172 Premium  
M7-152 & M7-172 Premium KVT



# M7 Series Gen 2

Model	M7-132	M7-152	M7-172
Engine	V6108-CR-TIEF4		
Type	Direct Injection, with Intercooler turbocharger, water-cooled 4 cycle diesel engine		
No. of Cylinders	4 cylinders		
Total Displacement (cu. in.)	374		
Max Engine Power (97/68EC) HP@RPM	128 @ 1,900	148 @ 1,900	168 @ 1,900
Boost HP	20		5
Rated PTO HP @ 2000 engine RPM (OECD Code 2)	100	120	140
Alternator (amps)	200 Amp		
Fuel Tank Capacity (gal.)	87		
DEF Tank Capacity (gal.)	10		

GRADE	DELUXE	PREMIUM	PREMIUM KVT
Transmission Type	Semi-Powershift		CVT
Main Gear Shift	6-Speed Powershift		CVT
Range Gear Shift	5-Speed Synchronized (GST)		CVT
No. of speeds	F30 / R15 (F54 / R27 w/optional creep)		CVT
Shuttle Shift	Electro-hydraulic shuttle		
Main Clutch	Hydraulic multi-plate wet disc		

HYDRAULICS			
Hydraulic System	Closed center, load sensing (CCLS)		
Pump Capacity (gpm)	29		
3-Point Hitch	Telescopic lower link, Category 3, 3N		
Control System	Electronic draft control / Lower-link sensing		
Lift Capacity at 24" (lbs.)	11,797		
No. of Remote Valves	Max. 4 valves (mechanical valve)	Max. 5 valves (electronic valve)	
Rear PTO Speed (rpm)	540/540E/1,000/1,000E		
Front PTO Speed (rpm)	1,000		
Rear Axle Type	Flanged axle or bar axle	110" bar axle	

DIMENSIONS AND WEIGHT			
Overall Length (in.)	188"		
Overall Height (in.)	119"		
Overall Width (in.)	98.4" or 111"	111"	
Wheelbase (in.)	107"		
Weight (lbs.)	14,840	15,390	

LOADER	
Model	LM2605 Mechanical self-leveling loader, with Z-bar linkage

COMPATIBILITY		
Control Type	Mechanical Lever	Electrical Joy Stick
Max. Lift Height at Pivot Pin	167"	
Lift Capacity at 800 mm forward Forward (lbs.) (max. height)	5,765	
Standard Equipment	Third function valve, Single-lever hydraulic quick coupler, Accumulator (KSR: Kubota Shockless Ride)	



## Narrow Models

M4N-071 | M5N-091PK | M5N-091 | M5N-111

**The M4N/M5N are engineered specifically for work in vineyards, orchards, or anywhere else that might require a narrow tractor that features M Series power.**

- › Narrow models (M4N-071/M5N-091/M5N-091PK/M5N-111) measure just 48" outside to outside at rear axle with standard tires
- › The 4WD M5N-091PK (Power Krawler), with its powerful engine and independently oscillating left and right rear tracks, ensures greater traction and sure-footed climbing in vineyards and other hilly terrain
- › Electro-hydraulic Shuttle Transmission is standard on all M Series models and makes shifting between forward and reverse a smooth and quick operation
- › Bevel Gear Front Wheel Drive with Bi-Speed Turn on the M Series narrow tractors delivers greater strength, maneuverability, and durability
- › Automatic 4WD braking on all M4N/M5N models from 2WD mode
- › The M4N and M5N have a V-3800 Tier 4 engine, increased alternator capacity, larger radiator, larger diameter cooling fan, and RPM memory for repetitious actions
- › To promote operator efficiency, all main controls are on the right-hand side of the operator while the steering wheel now has up to 25 degrees of tilt
- › Tracks offer an alternative to keep the narrow profile of the tractor while maintaining and improving the field performance. These benefits include increased traction and stability while minimizing ground compaction and damage to soil

## Narrow Models

	M4N-071 HD12 / HDC12	M5N-091PK Power Krawler	M5N-091 HD12 (HD24) / HDC12 (HDC24)	M5N-111 HD12 (HD24) / HDC12 (HDC24)
<b>Engine Type</b> (Kubota, liquid-cooled, diesel)	CRS, Direct Injection, 4-cylinder, turbocharged, Tier 4	CRS, Direct Injection, 4-cylinder, turbocharged w/intercooler, Tier 4		
<b>Horsepower (gross)*</b>	72.6	92.5	105.7	
<b>Horsepower (PTO)**</b>	61	78	HD(C)12: 78 HD(C)24: 75	HD(C)12: 91 HD(C)24: 88
<b>Displacement</b> (cu. in.)	230			
<b>Alternator (amps)</b>	100 (130 opt. on cab model)	80 (130 opt. on cab models)		
<b>Transmission</b> (fully synchronized)	F12/R12 (F18/R18 w/creep)		HD(C)12: F12/R12 (F18/R18 w/creep) / HD(C)24: F24/R24 (F36/R36 w/creep)	
<b>Height</b> (top of hood / cab)	54.7"/90.2"	N/A/93.3"	59.8"/90.2"	
<b>Overall Width</b> (ROPS / cab)	51.6"/53.9"	N/A/48"	53.5"/53.9"	
<b>Overall Length</b>	147.6" / 149.2"	155.5"		
<b>Crop Clearance</b> (front axle)	12" (ROPS) / 14.6" (cab)			
<b>Wheelbase</b>	83.9"			
<b>Tractor Weight</b> (ROPS/cab)(lbs.)	5,049/5,291	N/A/7,275	5,357/5,622	

\* SAE J1995; \*\* OECD Code 2







## Low-Profile<sup>1</sup> Models M5L-111 | M6L-111

### The M5L/M6L combine low clearance versatility with full-size features and capabilities.

- › Designed specifically for fruit and nut orchard applications, the M Series low-profile tractors are versatile enough to be used in poultry operations or anywhere low clearance operation is required
- › The M5L and M6L are equipped with a Kubota turbocharged V3800 Tier IV Final engine, which has a Common Rail System (CRS), intercooler, and Exhaust Gas Recirculation (EGR), while a Diesel Particulate Filter (DPF) and a Selective Catalytic Reduction (SCR) system minimize emissions
- › An RPM Memory switch recalls preferred engine RPM with the touch of a button, and Constant RPM Management keeps the engine speed constant for stable operation
- › To promote operator efficiency and comfort, all controls are conveniently located on the right side, the floor pedals have been adjusted for better comfort, and the floor area has been increased along with ergonomic steps
- › Right-hand steel operator's guard helps keep low hanging branches from contacting the operator or inadvertently contacting critical controls
- › Kubota continues to use heavy-duty, wide steel fenders along with a steepl sloping hood designed to reduce crop damage and gently deflect the branches of trees while protecting the operator and key controls
- › Lowered ROPS frames reduce the total height of the M5L to 66.3" and the M6L to a height of 89" with standard tires



## Low-Profile<sup>1</sup> Models

	M5L-111	M6L-111
<b>Engine Type</b> (Kubota, liquid-cooled, diesel)	V3800-TIEF4, CRS, Direct Injection, 4-cylinder, turbocharged, w/intercooler	
<b>Horsepower (gross)*</b>	105.6	114.1
<b>Horsepower (PTO)**</b>	89	95
<b>Displacement (cu. in.)</b>	230	
<b>Alternator (amps)</b>	60 (80 amp opt.)	80
<b>Transmission (fully synchronized)</b>	F12/R12 (F18/R18 w/creep)	F32/R32 (F48/R48 w/creep)
<b>Traveling Speed (mph)</b>	20.1	0.86–18.56
<b>Height (front of hood)</b>	90.6" (ROPS) / 66.3" (ROPS folded)	89.4" (ROPS)
<b>Overall Width</b>	77.6"	83.5"
<b>Overall Length</b>	155.9"	163.2"
<b>Crop Clearance (front axle)</b>	16.3"	18.5"
<b>Wheelbase</b>	88.6"	95.9"
<b>Tractor Weight (lbs.)</b>	5,908	7,077
<b>Front Loader</b>	LA1854	LA1944A

1 - Based on Kubota specifications; \* 97/68/EC; \*\* OECD Code 2





## High-Clearance Models

M6H-101

**The M6H tractor is engineered with high clearance and more speeds to enhance performance in planting, spraying, and harvesting applications.**

- › The M6H-101 high-clearance tractor is designed with best-in-class standard crop clearance — at 25.8" of ground clearance, the M6H will clear crops and ensure less damage, meaning more productivity for you
- › Slow ground speed is key in most high-clearance, specialty crop applications — with a standard, factory-installed creep speed, the M6H-101 has a minimum ground speed of 0.11 MPH at rated engine RPM
- › A 24-speed transmission gives the operator a wide variety of speed selections: from creep speed in the field, to high range on the road, the M6H's 3-range, 8-gear transmission will match the proper speed to the task being taken on
- › A left-hand, electro-hydraulic shuttle makes changing directions simple, with fingertip control
- › The M6H-101 comes with 2 standard rear remote valves, a self-canceling detent, and float detent — with 17.6 gpm of hydraulic flow, the M6H is ready to be productive, straight from the factory



## High-Clearance Models

### M6H-101

<b>Engine Type</b> (Kubota, liquid-cooled, diesel)	V3800-TIEF4, 4 cylinders in-line, Common Rail System, Direct Injection, DPF, DOC, SCR
<b>Horsepower (gross)*</b>	104.4
<b>Horsepower (PTO)* at rated engine RPM</b>	84
<b>Displacement (cu. in.)</b>	230
<b>Alternator (amps)</b>	80
<b>Transmission (fully synchronized)</b>	F24/R24 w/creep
<b>Traveling Speed (mph)</b>	0.11–16.37
<b>Overall Height (ROPS unfolded)</b>	111.6"
<b>Overall Width</b>	79.9"
<b>Overall Length</b>	168.3"
<b>Minimum Ground Clearance***</b>	25.8"
<b>Wheelbase</b>	95.3"
<b>Standard Tire Size</b>	13.6-38
<b>Tread Width (front)***</b>	61.6", 65.6", 72.0", 75.8", 79.7"
<b>Tread Width (rear)***</b>	60.8", 64.8", 73.4", 77.2", 81.1"
<b>Weight (lbs.)</b>	8,157

\* 97/68/EC \*\*\* When standard tires are equipped





## Disc Mowers

DM1017 | DM1022 | DM1024 | DM2028 | DM2032  
DM3087 | DM4032 | DM5032 | DM5040

**The tough and reliable Disc Mower Series is built with no compromises for maximum cutting performance.**

- › Fully welded cutter bar with overlapping C channels creates a strong, and durable machine
- › High oil efficiency by using a low volume of oil ensures low working temperature for efficient cooling and lubrication of the entire cutter bar in all operating ranges
- › 3-bladed discs increases your cutting efficiency by 50%, producing a neat, cleanly cut crop
- › Even number of counter-rotating discs allows for improved overlap and a smooth, even crop flow
- › Specially machined gears with a rounded design and long teeth allow for quiet operation and efficient power transmission
- › DM Series disc mowers offer flexible suspension, well-suited for work on slopes and hilly conditions
- › DM5000 Series mowers offer larger working widths, while its trailed-type design is ideal for lower horsepower tractors



## Disc Mowers

	DM1017	DM1022	DM1024	DM2028	DM2032	DM3087	DM4032	DM5032	DM5040
Cutting Width	5' 6"	7' 2"	7' 10"	9' 2"	10' 6"	28' 7"	10' 6"		13' 1"
Weight (approx., lbs.)	860	948	992	1,345	1,510	3,110	1,566	2,513	2,756
Transport Width	3' 9"			4' 7"		9' 7"	9' 10"		12' 5"

### ATTACHMENT

Hitch	Cat. I	Cat. II				Cat. II, III	Cat. II Optional		
Drawbar Hitch	N/A						Std.		
PTO (rpm)	540				1000		540		
Min. PTO Horsepower Req.	36	42	46	50	55	120	40	63	85

### OPERATION

Number of Discs and Blades	4 / 12	6 / 18		8 / 24		16 / 48	8 / 24		10 / 30
Remotes	1				2		1	2	
Cutter Bar Operating Range	±45°			±35°			±17°		
Stubble Height	0.78"–1.97"								

### OPTIONAL EQUIPMENT

Swath Boards (RH)	Standard				Optional		N/A		
Swath Discs (RH/LH)	Optional / N/A				Optional / Optional		N/A		
High Skids	Standard / Optional / Optional				Optional		Standard / Optional / Optional		
Lighting Kit	Optional						Standard		







## Disc Mower Conditioners

DMC8028T | DMC8028R | DMC8032T  
 DMC8032R | DMC8036T | DMC8036R  
 DMC8532T | DMC8532R | DMC8536T  
 DMC8536R | DMC8540T | DMC8540R

### Trailed mower conditioners are a cut above the rest in new dimensions and pivot drawbar options.

- › DMC8000 and DMC8500 series range from 9' 2" to 13' 1"
- › High oil efficiency using a low volume of oil ensures low working temperature for efficient cooling and lubrication of the entire cutter bar in all operating ranges
- › Choose between a left-hand drawbar or center-pivot models
- › Long, curved gears run smoothly in oil and make for a low-noise cutter bar
- › Counter-rotating discs improve overlap and ensure an even flow of crop into the conditioning unit
- › Full width conditioning ensures an evenly conditioned crop as well as a consistent windrow
- › Cutterbar gear protection is done to Top Service Hubs that have a built in shear protection and are designed to quick and easy maintenance
- › With 3 blades and counter rotating disc, Kubota mowers have one blade in the crop at all times, making for cleaner cut and uses less HP as well increases blade life
- › Kubota's Patented SemiSwing tine conditioning system allows for more consistent conditioning action in a wide variety of crop conditions
- › Chevron roller conditioners with full width conditioning provide yet effective conditioning of fragile crops



## Mounted Disc Mower Conditioners

DMC6332R | DMC6332T | DMC6336TVARIO  
 DMC63100R | DMC63100T | DMC7332R  
 DMC7332T | DMC7336R | DMC7336T

- > DMC7300 Front and DMC6300 Rear 3-Point Series mowers range from 10'6" to 33'6"
- > High oil efficiency using a low volume of oil ensures low working temperature for efficient cooling and lubrication of the entire cutter bar in all operating ranges
- > Cutterbar gear protection is done to Top Service Hubs that have a built in shear protection and are designed to quick and easy maintenance Choose between a left-hand drawbar or center-pivot models
- > Long, curved gears run smoothly in oil and make for a low-noise cutter bar
- > With 3 blades and counter rotating disc, Kubota mowers have one blade in the crop at all times, making for cleaner cut and uses less HP as well increases blade life
- > Counter-rotating discs improve overlap and ensure an even flow of crop into the conditioning unit
- > Full width conditioning ensures an evenly conditioned crop as well as a consistent windrow
- > Kubota's Patented SemiSwing tine conditioning system allows for more consistent conditioning action in a wide variety of crop conditions
- > Chevron roller conditioners with full width conditioning provide yet effective conditioning of fragile crops

## Disc Mowers Conditioners

	DMC 8028T	DMC 8028R	DMC 8032T	DMC 8032R	DMC 8036T	DMC 8036R	DMC 8532T	DMC 8532R	DMC 8536T	DMC 8536R	DMC 8540T	DMC 8540R
<b>Drawbar</b>	Left Hand						Center Pivot					
<b>Conditioner</b>	Semi Swing	Roller cond.	Semi Swing	Roller cond.	Semi Swing	Roller cond.	Semi Swing	Roller cond.	Semi Swing	Roller cond.	Semi Swing	Roller cond.
<b>Cutting Width</b>	9' 2"		10' 6"		11' 5"		10' 6"		11' 5"		13' 1"	
<b>Weight (approx., lbs.)</b>	4,013	4,212	4,348	4,543	4,740	4,938	5,225	5,401	5,349	5,546	5,513	5,976
<b>Transport Width</b>	8' 10"		9' 8"		11' 2"		9' 10"		11' 2"		12' 6"	
<b>ATTACHMENT</b>												
<b>Hitch</b>	Drawbar Hitch Standard / Cat. II Swivel Hitch Optional						Cat. II Swivel Hitch Standard / Drawbar Hitch Optional					
<b>PTO (rpm)</b>	540 Standard / 1000 Optional								540 Optional / 1000 Standard			
<b>Min. PTO Horsepower Req. (hp/kW)</b>	70/50		80/60		60/80		90/66		100/74			
<b>OPERATION</b>												
<b>Number of Discs</b>	8				10		8		10			
<b>Remotes Double Acting</b>	2											
<b>Stubble Height</b>	1.18"-2.36"											
<b>Cond. Rotor Speed</b>	900/600	900	900/600	900	900/600	900	900/600	900	900/600	900	900/600	900
<b>Tires</b>	31 x 13.5 - 15 Standard											
<b>ACCESSORIES</b>												
<b>Wide Spreading Kit</b>	Optional											
<b>High Skids</b>	Optional											
<b>Lighting Kit</b>	Standard											
<b>Alternative Cond. Speed Kit</b>	1015/500	1200/750	1015/500	1200/750	1015/500	1200/750	1015/500	1200/750	1015/500	1200/750	1015/500	1200/750



	DMC 6332R	DMC 6332T	DMV 6336T VARIO	DMC 7332T	DMC 7332R	DMC 7336T	DMC 7336R	DMC 63100T VARIO	DMC 63100R VARIO
<b>Drawbar</b>									
<b>Conditioner</b>	Roller cond.		Semi Swing		Roller cond.	Semi Swing	Roller cond.	Semi Swing	Roller cond.
<b>Cutting Width</b>	10'6"		11'5"	10' 6"		11' 5"		32' 1" - 33' 4"	
<b>Weight (approx., lbs.)</b>	32,180	3,086	3,351	1,250	1,286	1,380	1,440	3,070	3,190
<b>Transport Width</b>	9'10"			9' 8"		11'		9' 5"	
<b>Hitch</b>	Cat II 3 Point			Cat. II					
<b>PTO (rpm)</b>				1000					
<b>Min. PTO Horsepower Req. (hp/kW)</b>	66/90		90/120	75/55		80/60		200/150	
<b>Number of Discs</b>	8		10	8		10		2x10	
<b>Remotes</b>	2			1S				LS	
<b>Stubble Height</b>	1.18"-2.36"								
<b>Cond. Rotor Speed</b>	900	900/600		1000			950	1000/700	950
<b>Tires</b>	31x13.5-15 Standad								
<b>Wide Spreading Kit</b>	Optional								
<b>High Skids</b>	Optional								
<b>Lighting Kit</b>	Standard								
<b>Alternative Cond. Speed Kit</b>	1200/750	1015/500							



## Tedders

TE4052T | TE6576CD | TE6583T | TE8511T | TE8511C

### Speed up your drying process with Kubota's versatile range of FarmLine and ProLine tedders.

- › Kubota tedders have working widths that range from 17' 1" to 36' 1"
- › Our symmetric Kubota Super-C tines allow for an efficient and even-spread crop flow that ensures the wet crop is placed on top of dry crop
- › Kubota Super-C tines are made from 0.39" shot-peened spring steel, and the spring coil diameter has a 20% larger diameter than conventional designs
- › FarmLine tedders are fitted with a 1 time per season maintenance gearbox and the ProLine is fitted with a maintenance free gearbox
- › Kubota's FarmLine tedders feature a pull-type design, making it the ideal tool for low-horsepower tractors
- › Kubota's ProLine tedders offer unique transport solutions—with hydraulically controlled transport wheels, these machines can quickly move from one field to another



## Tedders

	TE4052T	TE6576CD	TE6583T	TE8511T	TE8511C
<b>Kubota Model</b>	FarmLine	ProLine	FarmLine		ProLine
<b>Working Width</b>	17' 9"	25' 7"	28' 5"	37' 1"	
<b>Transport Width</b>	9' 6"	9' 9"	9' 10"	9' 6"	9' 9"
<b>Transport Length</b>	9' 6"	14' 9"	19' 4"	23' 8"	19' 6"
<b>Storage Height</b>	8' 8"	13' 7"	4' 1"		10' 10"
<b>Weight (approx., lbs.)</b>	1,014	2,822	1,984	2,679	3,985
<b>Capacity Theor. (acres/h)</b>	10.4	15.1	16.3	21.7	
<b>ATTACHMENT</b>					
<b>3-Point, Tracking</b>	N/A				
<b>Linkage Drawbar</b>	Standard				N/A
<b>2-Point, Linkage Arms</b>	N/A				Category II
<b>Vibration Damper/Integral Lock</b>	N/A				
<b>ROTORS, TINES, GUARDS</b>					
<b>Number of Rotors</b>	4	6		8	
<b>Number of Tine Arms/Rotor</b>	6	7			
<b>Tine Adjustment System</b>	Standard				
<b>Adjustment of Spreading Angle</b>	N/A	Standard	N/A		Standard
<b>Cab Contr. Border Clearing System – Mech.</b>	N/A				
<b>Cab Contr. Border Clearing System – Hydr.</b>	N/A	Standard	Optional	N/A	Standard
<b>Reduc. Gearbox for Night Swaths</b>	Optional				
<b>TIRES, AXLES, LIGHTS</b>					
<b>Wheels</b>	16 x 6.5-8				
<b>Tires on Central Unit</b>	N/A	18.5 x 8.5-8	N/A		18.5 x 8.5-8
<b>Front Wheel (16 x 6.5-8)</b>	N/A	Standard	N/A		
<b>Tandem Axles</b>	Optional	N/A			
<b>Warning Panels</b>	Optional	N/A			
<b>Warning Panels w/ Integrated Lighting</b>	Optional	Standard			



## Rotary Rakes

RA1035 | RA1042T | RA1047T | RA2071T EVO  
RA2072 | RA2076 | RA2577 | RA2584

**Durability is exemplified in Kubota rakes, with their maintenance-free gear boxes and the patented TerraLink flexibility system.**

- › Kubota rakes are equipped to perform with up to 13 double tangential tine arms and up to 5 double tines per arm which ensures a uniform swath for faster drying and even feeding into the baler
- › Kubota's rakes feature patented TerraLink Quattro flexibility system, which allows the rake to follow a variety of ground contours
- › The FarmLine rakes feature 0.35" wire diameter tines
- › A maintenance-friendly FarmLine rotor head operates within a fully enclosed oil-filled housing
- › The ProLine rakes feature heavy-duty 0.39" wire diameter tines
- › All ProLine machines come standard with the renowned fully enclosed gearbox and its maintenance-free oil bath solution
- › With the ability to make either one or two windrows, the RA2071T EVO can make two smaller windrows in heavy crop conditions or one windrow in light crop conditions
- › Kubota's center delivery rake models feature rear-controlled steering, allowing the rake to make headland turns of up to 80 degrees

# Rotary Rakes

	RA1035	RA1042T	RA1047T	RA2071T EVO	RA2072	RA2076	RA2577	RA2584
<b>Kubota Model</b>	FarmLine						ProLine	
<b>Working Width</b>	11' 6"	13' 9"	15' 5"	9' 10" – 22' 3"	20' 4" / 23' 7"	23' / 25' 7"	25' 3"	24' 11" / 27' 7"
<b>Transport Width</b>	5' 9"	6' 7"	7' 10"	9' 10"	9' 2"		9' 9"	
<b>Transport Length</b>	11'	13' 2"	15' 9"	26' 11"*	19' 4"		20' 6"	
<b>Parking Height</b>	5' 7"	7' 7"	8' 8"	7' 10" – 9' 6"	12' 8"	11' 4"* / 13' 5"	12' 4"* / 14' 5"	11' 4"* / 13' 5"
<b>Weight (lbs.)</b>	926	1,257	1,466	2,976	3,616	2,557	5,049	4,299
<b>Swath Width</b>	N/A	N/A	N/A	N/A	N/A	4' 3"–7' 3"	N/A	4' 3"–7' 3"

## HITCHING SYSTEM

<b>Pivoting 3-Point Headstock</b>	Cat. I & II	N/A						
<b>Lower Links (2-point)</b>	N/A				Standard			
<b>Linkage Drawbar</b>	N/A	Standard				N/A		
<b>Gauge Wheel 16°</b>	Optional		N/A	Optional	N/A			

## ROTORS/TINE ARMS/TINES

<b>Rotor Diameter</b>	9' 2"	11'	12'	9' 8"	11'	12'	
<b>Swath Delivery</b>	Left		Slide	Left	Center	Left	Center
<b>Number of Rotors</b>	1			2			
<b>Number of Arms/Rotor</b>	10	11	12	11/12	11	12/13	2 x 12
<b>Number of Double Tines/Arm</b>	4					4/5	4
<b>Tine Diameter</b>	0.35"		9mm	0.35"		0.39"	
<b>Detachable Tine Arms</b>	Standard				N/A	Standard	
<b>Height Adjustment</b>	Mechanical			Hydr./Mech.	Mechanical		

## WHEELS AND AXLES

<b>Tires (rotors)</b>	16 x 6.50-8	18.5 x 8.50-8			16 x 6.50-8		
<b>Fixed Tandem Axle</b>	Optional	Standard	(rear) Optional	Optional	N/A	Optional	
<b>Pivoting Tandem Axle</b>	N/A						
<b>Stand. Tires (carrying frame)</b>	N/A				10.0/75-15.3	380/55-17	

## OPTIONAL EQUIPMENT

<b>Warning Panels</b>	Optional			Standard			
<b>Road Lights</b>	Optional			Standard			

\* With detached tine arms and lowered headstock





## NEW Wheel Rakes

RA108CR | RA110CR | RA210CR | RA212CR

### The Kubota RA Series wheel rakes are fast and productive for handling dry hay.

- › Transport is safe and easy on the road or through narrow gates and openings. Ranging in transport widths from 9'2" to 9'6"
- › Wing frame is adjustable for a wider range of windrow widths on our 200 Series
- › Adjustable for 12 different tractor drawbar heights to ensure proper working angles of the rake wheels
- › Independent Wing Cylinder Lockouts allow for single sided, left or right only raking in addition to providing safety and security when both sides are engaged in transport mode
- › Individual Rake Wheel Suspension is ideal for rough and uneven hay fields allowing each wheel to act independently and follow ground contour

## NEW WheelRakes

	RA108CR	RA110CR	RA210CR	RA212CR
Transport Length	21' 2"	21' 2"	24' 10"	24' 10"
Working Length (Max)	21' 6"		25' 4"	
Transport Width	9' 4"	9' 6"	9' 2"	9' 3"
Transport Height, Min.	8'	8'	8' 4"	8' 4"
Transport Height, Max.	8' 5"	8' 9"	9' 7"	9' 11"
Min. Working Width	15' 8"	18' 4"	18"	21"
Max. Working Width	16' 8"	20' 4"	21'	25'
Min. Window	34"		36"	
Max. Window	72"		89"	
Working Height	55"			
Typical Weight w/o Options	1,460	1,640	1,790	1,970
Wing Spread	N/A		One hole changes window and working width 6" – 7"	
Hydraulic Circuits	Closed-center or Open-center, one remote			
Hydraulic Power Required	1,880 psi, 10 gpm			
Minimum Tractor HP	30	40	40	50





## Balers

BV4160 ECONO | BV4160 | BV4160SS | BV4180 | BV4180SS  
 BV4580 | BV5160 | BV5160R

## Global expertise and proven performance for more than 135 years.

- › 4' wide and 5' 5" tall variable chamber round balers for more value in your bales
- › All Kubota Balers come equipped with Intelligent Density 3-D that gives you the ability to adjust the bale density in 3 areas to match any crop or crop condition
- › The BV4160 and BV4180 are available as silage special balers and the BV4580 comes standard silage capable
- › Kubota's BV5160 SC14 and BV5160RN Drop Floor enables the operator to clear blockages easily from the tractor cab
- › The Kubota BV5160 is equipped with the SuperCut-14 knife roller — an ideal solution for silage applications — featuring a chopping length of 2.75" that produces dense and airtight bales that reduce mixing time and are more digestible for nutrient absorption for livestock.
- › Kubota's BV4160 and BV4180 models are fitted with an efficient fork feeder intake system, which provides direct feed into the bale chamber, allowing for fast and efficient baling
- › Kubota's balers that are equipped with the front mounted PowerBind net wrap technology are efficient and feature simple loading, routing, and net that is applied tight on the bale time after time
- › The BV4580 round baler features a low-profile 86" wide pickup designed to deliver high crop volumes into the full-width rotary feeding system, producing high quality 5' x 6' bales
- › The Kubota BV5160R is equipped with a Rotor Intake - ideale for silage applications where chopping is not needed or working in high volume crops for silage or dry hay.



# Balers

	BV4160 ECONO	BV4160 / BV4160SS	BV4180 / BV4180SS	BV4580	BV5160R	BV5160	
<b>Length</b>	176"						
<b>Width</b>	99"		116"		99"	99"	
<b>Height</b>	106"	112"		106"		106"	
<b>Weight (lbs.)</b>	5864	6305		7275	6592	7187	
<b>BALE CHAMBER</b>							
<b>Diameter Min.</b>	31"						
<b>Diameter Max.</b>	65"	71"		65"		65"	
<b>Bale Width</b>	47"		62"		47"		
<b>Bale Formation</b>	5 belts + 3 rollers		8 belts + 3 rollers		5 belts + 3 rollers		
<b>Endless Belts</b>	N/A			Standard			
<b>PICK-UP</b>							
<b>Working Width</b>	67"	79"		86"			
<b>Number of Tine Rows</b>	4			5			
<b>Tine Spacing</b>	2.36"						
<b>Wind Guard</b>	Crop Deflector			Roller Wind Guard			
<b>Pneumatic Gauge Wheel</b>	(2) Standard						
<b>INTAKE SYSTEM</b>							
<b>Open Throat</b>	Standard				N/A		
<b>Intake System</b>	Feeder Fork		Easy Feed		Rotor		
<b>SuperCut-14 Knives</b>	N/A				N/A	Standard	
<b>Single Knife Protection</b>	N/A						
<b>Knife Group Selection</b>	N/A				Standard		
<b>Unblocking System</b>	N/A			Drop floor			
<b>DRIVELINE</b>							
<b>1¼" Chains</b>	Standard						
<b>W-A PTO Shaft</b>	Standard						
<b>Shear Bolt Protection</b>	Standard				N/A		
<b>Cam Clutch Protection</b>	Standard						
<b>BINDING</b>							
<b>Twine Only</b>	Standard	N/A					
<b>Net Only</b>	N/A	BV4160N	BV4180N	BV4580N	BV5160RN	BV5160SC14N	
<b>Twine and Net</b>	N/A	BV4160NT	BV4180NT	BV4580NT	N/A	BV5160SC14NT	
<b>OPERATIONS</b>							
<b>ISOBUS</b>	N/A	Optional			Standard		
<b>Operating Terminal</b>	Standard				Tellus GO		
<b>IsoMatch Tellus</b>	N/A	Optional					
<b>Hydraulic Outlets</b>	1SA + 1DA						
<b>PTO (rpm)</b>	540		540/1000		540		
<b>Min. Power Requirement (hp)</b>	55	64	70		75		
<b>WHEELS AND AXLES</b>							
<b>Standard Wheel Size</b>	11.5 x 15 Std.	PREM 31 x 13.5 x 15 Std.	PREM 31 x 13.5 x 15 Std.	14L-16.1SL	31 x 13.5 x 15 Std.		
<b>Optional Wheel Sizes</b>	19.0/45-17	19.0/45-17	19.0/45-17	16.5-16.1SL, 19L-16.1SL	19.0/45-17		



## Wrappers

WR1100 | WR1400 | WR1600C

**With remote-controlled, three-point mounted turntable wrappers, the perfectly wrapped bale is right at hand.**

- › The entire wrapping process of the Kubota WR1100 can be controlled via an optional handheld remote from the loading tractor
- › The Kubota WR1100 is ideal for “wrap and stack” operations, as it can be mounted on the rear or front hydraulics of the tractor, or used as a static machine with an external power pack unit
- › For smaller tractors, the extendable wheel arm of the Kubota WR1400 allows bales up to 2650 lbs. to be loaded without any counterweights on the machine
- › Turntable with two driven rollers is designed for high bale stability and smooth, even rotation
- › The low design of the Kubota WR1400 ensures fast and gentle unloading of the bale with no need for an extra fall damper
- › The turntable may be tilted until it nearly touches the ground, reducing chance of film damage
- › The Kubota WR1600C is a high capacity wrapper, capable of wrapping one bale while carrying another one. And it features 2 Film Applicators this cuts your wrapping time in half.

# Wrappers

	WR1100C	WR1400C	WR1400M	WR1600C
Transport Length	108"	170"		
Transport Width	63"	99"	105"	
Transport Height	69"	76"	81"	
Weight (lbs.)	1,653	2,249	4,189	
<b>BALE</b>				
Max. Bale Size (L x D)	47" x 60"			
Max. Bale Weight (lbs.)	2,205		2,646	
<b>WRAPPING TABLE</b>				
Mounted Wrapper	Standard	N/A		
Pull-Type Wrapper	N/A	Standard		
Support Rollers/Belts	2/4		4/2	
Automatic Film Cutter	Standard			
Max. Wrapping Speed (rpm)	30			
<b>PRE-STRETCHER</b>				
Pre-stretcher 29.5" (750 mm)	Standard			
Double Pre-stretchers 29.5" (750 mm)	N/A			
<b>OPERATIONS</b>				
Manual Cable Control (M)	N/A	Standard		N/A
Programmable Computer (C)	Standard		N/A	Standard/ Joystick
Remote Control (C)	Standard		N/A	
Oil Consumption (gal/min)	7.4 (gal/min)			
<b>WHEELS AND AXLES</b>				
10.0/80-12	N/A	Standard		N/A
11.5/80-15	N/A			
15.0/55-17	N/A		Standard	
<b>OPTIONS</b>				
Fill Roll Magazine	N/A	Optional		Standard
Adapter Kit for 20" (500 mm) Film Spool	Optional			
Bale and Wrap Counter	Standard			
Auto-stop at End of Cycle	Standard			
Film End/Tear Sensor	Optional	N/A		
Road Lights	N/A	Optional		





## VS Series

VS220 | VS330 | VS400VITI | VS500VITI  
 VS400 | VS500 | VS600 | VS800 | VS1000

**The VS Series offers a unique pendulum spreader range for maximum accuracy, spreading quality, and ease of operation.**

- › Pendulum movement of the spout ensures the application rate is always identical on both sides for excellent overlap
- › Available with manual control, hydraulic remote control from the cabin, or electronic control from the cab
- › Minimum wind influence on the spreading pattern ensures the tractor does not get covered with fertilizer
- › Easy setting of the application rate with the scale allows continuous adjustment in pounds per acre, minimizing the risk of spreading errors
- › Low filling height makes refilling fertilizer easy, as the hopper can be moved under a tipping trailer or silo, or filled by hand
- › Agitator ensures an even material feed to the spreading unit, so there is no risk of crushing the fertilizer

## VS Series

	VS220*	VS330*	VS400VITI*	VS500VITI*	VS400*
Basic Unit	N/A	220	N/A	400VITI	N/A
Hopper Capacity (lbs.)	485	730	880	1,100	880
Hopper Capacity (cu. ft.)	7.8	11.7	14.1	17.7	14.1
Hopper Width	42"		45"		57"
Filling Height	30"	39"	35"	40"	35"
Weight (lbs.)	183	187	276	278	276
Required PTO HP	10	15	20	25	20
Hitch Category	Cat. I		Cat. I & II		

	VS500*	VS600*	VS800*	VS1000*
Basic Unit	400	N/A	600	
Hopper Capacity (lbs.)	1,100	1,300	1,750	2,200
Hopper Capacity (cu. ft.)	17.7	21.2	28.3	35.3
Hopper Width	57"	69"		
Filling Height	40"	38"	42"	46"
Weight (lbs.)	278	327	342	364
Required PTO HP	25	35	40	45
Hitch Category	Cat. I & II		Cat. II	

\* Spreads both powder and granules







## Loaders/Landscapers

B26 | L47 | M62

**Our unique line of 4WD utility tractors is versatile and rugged enough to landscape or load up the farm, the front yard, or the ground floor of any construction site.**

- › E-TVCS diesel engines provide a total balance of high torque, low noise, low vibration, low emissions, and quick starts on cold mornings
- › Tractors are available as either tractor/loaders (TL) or tractor/loader/backhoes (TLB)
- › Backhoes are quick-attach, exposing a Cat. I or Cat. II (depending on model) hydraulic, independent, 3-point hitch
- › Powered by reliable Kubota diesel engines
- › Side-positioned loader controls, engine controls, and display provide operator ease and information at a glance whether using the loader or the backhoe
- › Sloped loader arms match the slanted hood for improved visibility in tight working areas
- › Quick couplers combine with auxiliary hydraulics for quick attachment changes and a variety of tools for both the loader and backhoe



## Loaders/Landscapers

	B26	L47	M62
<b>Engine Type</b> (Kubota, liquid-cooled, diesel)	E-TVCS, 3-cylinder, Tier 4 Final	EPA Tier 4 Final	
<b>Horsepower (gross)*</b>	25.5	47.1	63
<b>Displacement (cu. in.)</b>	68.5	148.5	
<b>Overall Length (w/ backhoe)</b>	198.0"	233.9"	252.9"
<b>Overall Width (w/ loader)</b>	60"	72.5"	84.8"
<b>Wheelbase</b>	62.2"	72.5"	80.7"
<b>Transmission</b>	Hydrostatic (HST) infinite 3-range	HST Plus 6-range	
<b>Tractor Weight (lbs.)</b> (w/ loader, backhoe, and ROPS/FOPS)	4,001	7,205	8,925
<b>COMPATIBLE IMPLEMENTS</b>			
<b>Backhoe</b>	BT820	BT1000B	BT1400
<b>Front Loader</b>	TL500	TL1300	TL1800
<b>ADDITIONAL IMPLEMENTS</b>			
<b>Ballast Box</b>	Optional		
<b>Hydraulic Breaker</b>	200 Class	300 Class	400 Class
<b>Pallet Fork</b>	36"	42", 48"	
<b>Hydraulic Thumb</b>	Optional		
<b>4-in-1 Bucket</b>	N/A	Optional	N/A
<b>BACKHOE SPECIFICATIONS</b>			
	<b>BT820</b>	<b>BT1000B</b>	<b>BT1400</b>
<b>Digging Depth</b>	99.8"	121"	169.8"
<b>Loading Height</b>	77.3"	92.9"	130.9"
<b>Bucket Sizes</b>	12", 18", 24"	12–36"	12–36"
<b>FRONT LOADER SPECIFICATIONS</b>			
	<b>TL500</b>	<b>TL1300</b>	<b>TL1800</b>
<b>Maximum Lift Height</b>	94.5"	113.9"	126.1"
<b>Lift Capacity (lbs.) at Full Height/Pivot Point</b>	1,301	2,848	3,960
<b>Material Bucket</b>	60"	72"	84"
<b>Loader Feature</b>	Mechanical spill guard	Automatic hydraulic self-leveling	

\* SAE J1995



## SCL1000

**Compact in Size, packed with performance and new features, Kubota's new Stand-on Compact Loader conquers the toughest of tasks yet is nimble enough to get in tight spaces.**

- › 24.8 HP Turbo-charged Kubota engine provides quiet operation, high altitude performance and requires no DPF
- › Vertical lift loader arms reach higher and further than the competition with a hinge pin height of 84.7" and a reach of 26" (at 45° dump angle).
- › 1000 lbs. ROC combined with 15 gpm auxiliary hydraulic flow make for a powerful and productive compact utility loader.
- › 4.3" Color LCD monitor includes Keyless start with passcode protection and easy to read consolidated machine monitoring with service reminders. A convenient 12 Volt charging port is also standard.
- › The patent pending T-drive handle provides intuitive and ergonomic steering. Hydraulic pilot-operated loader and drive control valves offer precise and responsive control of the machine
- › Right hand joystick controls loader arm and bucket movement. Auxiliary hydraulics are easily operated without removing your hand from the loader joystick. Continuous flow in either direction is as simple as pushing a button
- › Easy to access centralized filters and everyday maintenance items. Dash indicator light alerts when the air filter needs cleaned, and service information is readily available at the touch of a button.
- › Heavy-duty cast CII coupler and protective cover for bucket cylinder fittings. CII coupler is standard. Optional welded 2-lever style coupler
- › Works in zero clearance yards with low impact wide track design (4.0 psi) minimizing damage to grass or landscaping. 4.9 mph Best in class travel speed
- › Auxiliary hydraulic lines are routed inside the loader arm for optimal protection. Case drain is standard. Auxiliary hydraulic couplers are pressure

# SCL1000

## ENGINE

<b>Engine Type</b>	Water cooled 4 cycle diesel engine with 3 cylinder, turbo, EPA Tier 4
<b>Model Name</b>	KUBOTA D902-T
<b>Total Displacement</b>	54.8 cu.in. (898 cm <sup>3</sup> )
<b>Engine Power - SAE J1995 Gross</b>	24.8 HP (18.5 kW/rpm)
<b>Rated Speed</b>	2,800 rpm
<b>Low Idling Speed</b>	1,250 rpm

## DIMENSIONS

<b>Overall Length - Transport (w/Std Bucket Parallel to Ground)</b>	107.7" (2.74 m)
<b>Overall Length (w/o Bucket)</b>	84.9" (2.16 m)
<b>Overall Height</b>	55.7" (1.41 m)
<b>Overall Width w/Std Bucket</b>	36" (91.44 cm)
<b>Operating Weight (w/o Operator) lbs</b>	3,035 (1,376 kg)
<b>Rated Operating Capacity (35%)</b>	1,000 lb (453 kg) ROC
<b>Tipping Load</b>	2,857 lbs (1,296 kg)
<b>Wheelbase</b>	40.5" (1.03 m)
<b>Hinge Pin Height at Max. Lift</b>	84.7" (2.15 m)
<b>Reach at Max. Lift and 45° Dump</b>	26" (66 cm)
<b>Track Width</b>	9.8" (24.9 cm)
<b>Ground Clearance</b>	7.4" (18.8 cm)
<b>Angle of Departure</b>	25.2°

## PERFORMANCE

<b>Attachment Mounting System</b>	CII (Common Industry Interface) or 2 Lever Quick-Attach
<b>Travel Speed (Fwd/Rev)</b>	4.9 mph (7.9 km/h)
<b>Ground Pressure (with Operator)</b>	4.0 psi, 28.0 kPa (0.28 kgf/cm <sup>2</sup> )
<b>Battery Capacity</b>	12V, RC 80, 540 CCA
<b>Auxiliary Hydraulic Flow</b>	15 gal/min (56.7812 L/min)
<b>Auxiliary Hydraulic Pressure</b>	2,800 psi (19.3 mPa) (196.8 kgf/cm <sup>2</sup> )

## SERVICE & FILL CAPACITIES

<b>Fuel Tank Capacity</b>	7.75 gal (29.3 L)
<b>Hydraulic System</b>	6 gal (22.7 L)







## SSV Compact Skid Steer Loaders

SSV65 | SSV75

**Greater power now comes in a smaller package. Our new SSV skid steer loader is easier to transport from site to site and easier to maneuver in tight spaces.**

- › Increase operator comfort in our roomy fatigue- and stress-reducing cabin, encouraging all-day alertness
- › The sliding front entry door can be opened or closed regardless of loader position
- › Dust-resistant, pressurized cabin has an optimized air conditioning and climate control system for all-year-round operator comfort
- › Move more material faster in applications such as agriculture, construction, and landscaping
- › An optional multi-function lever allows fingertip control of all major vehicle and implement operations
- › The closed cab is radio-ready with speakers, wiring, and antenna standard equipment
- › Flip a switch on the hydraulic quick coupler to hook up or remove attachments without leaving your seat
- › Discover the increased lifting capacity, higher lift heights, and overall higher productivity of the SSV Series

## Skid Steer Loaders

	SSV65	SSV75
<b>Operator Station</b>	Open cab / Closed cab	
<b>Operating Weight (lbs.) (inc. operator weight 175 lbs.)</b>	6,790 / 7,055	8,157 / 8,422
<b>ENGINE</b>		
<b>Model</b>	V2607-CR-TE4	V3307-CR-TE4
<b>Emission Certification</b>	Tier 4	
<b>Gross HP (hp/rpm)*</b>	64/2,700	74.3/2,600
<b>Displacement (cu. in.)</b>	159.7	203.3
<b>Cylinders</b>	4	
<b>Bore Stroke</b>	3.5 x 4.4"	3.8 x 4.8"
<b>Aspiration</b>	Turbocharged	
<b>LOADER PERFORMANCE</b>		
<b>Rated Operating Capacity 50% Tipping Load (lbs.)</b>	1,950	2,690
<b>Tipping Load (lbs.)</b>	3,900	5,380
<b>Breakout Force – Bucket (lbf.)</b>	4,839	5,884
<b>Breakout Force – Lift Arm (lbf.)</b>	3,858	4,850
<b>Lift Arm Path</b>	Vertical	
<b>UNDERCARRIAGE</b>		
<b>Standard Tire Size</b>	10-16.5-8PR	12-16.5-10PR
<b>Chain Size ASA#</b>	80	100
<b>Travel Speed – Low (mph)</b>	6.9	7.4
<b>Travel Speed – High (mph)</b>	11.1	11.8
<b>Traction Force (lbf)</b>	7,339	8,494
<b>Ground Clearance</b>	7.6"	8.1"
<b>HYDRAULIC SYSTEM</b>		
<b>Loader Hydraulic Pressure (psi)</b>	3271	
<b>Aux. Hydraulic Flow (standard/high) (gpm)</b>	18.0 / 28.0	20.9 / 30.4
<b>Hydraulic Tank (gal.)</b>	4.2	
<b>Fuel Tank (gal.)</b>	25.4	26.9

\* SAE J1995







## SVL Compact Track Loaders

SVL65-2 | SVL75-2 | **NEW MODEL** SVL97-2

**The SVL Series offers best-in-class bucket breakout force and lifting capacity for groundbreaking new levels of performance and productivity.**

- › Powered by 4-cylinder Kubota CRS-TE4 turbocharged engines with 68.3, 74.3 and 96.4 horsepower, these best-in-class engines are equipped with common rail fuel injection and diesel particulate filters to match outstanding performance with increased fuel economy and greatly reduced exhaust emissions—the SVL97-2 is equipped with a selective catalytic reduction after-treatment
- › Vertical lift design and low center of gravity deliver exceptional stability
- › Standard-equipped 2-speed travel and high ground clearance ensure excellent travel performance on difficult terrains
- › Comfortable and spacious cab area features a luxurious, adjustable full-suspension seat and plenty of legroom
- › Angled track frame cover prevents soil from accumulating during operation
- › Easy maintenance features include a large engine compartment door to access all components for daily routine checks
- › The variable high flow setting of the SVL97-2 and the SVL65-2 & SVL75-2's optional high flow system takes performance and productivity to new levels.

### **New SVL97-2**

- › KubotaNOW Telematics (Standard)
- › Rearview Camera (Standard)
- › LED Lights (Optional)



## Compact Track Loaders

	SVL65-2	SVL75-2	SVL97-2
<b>Engine Type</b> (Kubota, liquid-cooled, diesel)	V2607-CR-TE4 turbocharged 4-cylinder	V3307 CRS-TE4 turbocharged 4-cylinder	V3800 CRS-TE4 turbocharged 4-cylinder
<b>Horsepower (gross)*</b>	68.3	74.3	96.4
<b>Displacement (cu. in.)</b>	159.6	203.3	230
<b>Overall Length</b> (w/ bucket on the ground)	136.4"	140.8"	154.6"
<b>Overall Height (top of cab)</b>	79.9"	82"	83.3"
<b>Overall Width (w/ bucket)</b>	68" / 74"	68" / 74"	80"
<b>Operating Weight (lbs.)</b> (ROPS/cab)	8,035 / 8,465	9,039 / 9,315	11,299 / 11,574
<b>Operator Station</b>		Open cab / Closed cab	
<b>LOADER PERFORMANCE</b>			
<b>Rated Operating Capacity (ROC)</b> 35% Tipping Load (lbs.)	2,100	2,300	3,200
<b>Tipping Load (lbs.)</b>	6,000	6,570	9,143
<b>Breakout Force – Bucket (lbf.)</b>	4,614	6,204	7,961
<b>Breakout Force – Lift Arm (lbf.)</b>	4,266	4,766	6,742
<b>Lift Arm Path</b>		Vertical	
<b>UNDERCARRIAGE</b>			
<b>Track Width (standard/wide)</b>	12.6" / 15"	12.6" / 15"	17.7"
<b>Ground Pressure (psi)</b> (standard/wide)	5.0 / 4.2	5.6 / 4.7	4.4
<b>Track Rollers (per side)</b>	4	4	5
<b>Track Ground Contact Length</b>	57.9"	56.5"	65.6"
<b>Travel Speed (mph) (low/high)</b>	4.9 / 7.1	4.7 / 7.1	5.0 / 7.3
<b>Traction Force (lbs.)</b>	8,408	9,678	12,178
<b>Minimum Ground Clearance</b>	9.1"	11.7"	11.5"
<b>AUXILIARY HYDRAULIC POWER</b>			
<b>Aux. Hydraulic Pressure (psi)</b>	3,263	3,185	3,553
<b>Aux. Hydraulic Flow (gpm)</b> (standard/high)	17.4 / 27.0	17.4 / 29.3	23.1 / 40

\* SAE J1995

## ADDITIONAL LOADER ATTACHMENTS

	SSV65	SSV75	SVL65-2	SVL75-2	SVL97-2
Standard and Heavy-Duty Buckets	68", 74"	74"	68", 74"	68", 74"	80"
4-in-1 Bucket	68", 74"	74", 80"	66", 72", 78"	68", 74", 80"	80"
Rock Bucket	66", 72"	72", 78"	66", 72", 78"	66", 72", 78"	78"
Utility Stump Bucket	Available for all SSVs and SVLs				
Pallet Forks	48", 60"				
Tilt Hitch	Available for all SSVs / SVLs				
Skid Steer 3 pt Hitch	Available for all SSVs / SVLs				
Grapple – Claw	72"		72", 84"		84"
Grapple – Rock	66", 72"	72", 78"	66", 72"	66", 72"	78"
Grapple – Manure	66", 72"	72", 78"	66", 72"	66", 72"	78"
Scrap Grapple	68", 74"	74", 80"	68", 74", 80"	68", 74", 80"	80"
Root Grapple	68", 74"	74", 80"	68", 74", 80"	68", 74", 80"	80"
6-Way Dozer Blade	84"		84", 96"		
Trencher	48", 60"				
Post Hole Digger	Two models available up to 30 gpm				
Tree Auger	24", 30", 36"				
Rock Auger	6", 9", 12", 15", 18", 24"				
Box Blade	72", 84", 96"				
Concrete Claw	Available for all SSV's and SVL's				
Hydraulic Hammer	500 energy class				750 energy class
Loader Boom JIB	6000 lb capacity				
Angle Broom	74", 84"				84"
Hopper Broom	74", 84"				84"
Soil Conditioner (Power Rake)	72"				90"
Skid Grader	72", 84"				
Vibratory Rollers ( Smooth & Padded)	72", 84"				
Rotary Cutter (2" & 4" Cap.)	60", 72"				
Rotary Cutter (6" Cap.)	N/A			72"	
Rotary Cutter (7" Cap.)	N/A				72"
Rotary Tiller	62", 76"				
Stump Grinder	24"				
Tree Pullers	15 Series	25 Series			
Tree Carrier	36", 42", 48"				
Snow Pusher	72", 84", 96"				84", 96"
Snow Trip Edge Blade	96", 108"				
Snow Blower	66", 74"	74", 84"	66", 74"	66", 74", 84"	84"
Snow/Light Material Bucket	84", 96", 108"				
Cold Planer	18", 24", 30"				18", 24", 30", 40", 48"
Road Saw	10"				10", 18"
Silaage Defacer	96"				
Primary Seeder	72", 84"				
Ripper	5 Shank Ripper				









## Excavators

K008-3T4 | KX018-4 | KX71-3ST4 | KX033-4

**Kubota's compact excavators combine maneuverability, power, and reliability with economy to help you haul away more pay dirt on every job.**

- › Low sound level increases operator comfort and allows more work in residential areas
- › Unique compact size increases productivity in confined areas
- › Superior stability with long tumbler distance and wide variable track width (KX018-4) enables you to safely perform jobs using a host of Kubota attachments
- › Variable-width track frame can be hydraulically retracted with the switch of a lever to fit through most doorways (K008-3T4) and gates (KX018-4)
- › One of the largest cabs in its class, the KX018-4 features ample legroom, adjustable seating, and a wide door to bring comfort to tough work
- › New digital display allows easy access and operation (KX018-4)
- › Two-pattern selection system lets operator choose ISO or SAE operating pattern
- › Easy access makes engine maintenance simple
- › With the stability and lifting capacity of a much bigger machine, the 3-ton KX033-4 offers a level of performance to efficiently handle a wide variety of tough excavating jobs
- › With a larger entrance, more legroom, and enhanced ergonomics that simplify routine operations, the KX033-4's luxurious cabin redefines operator efficiency

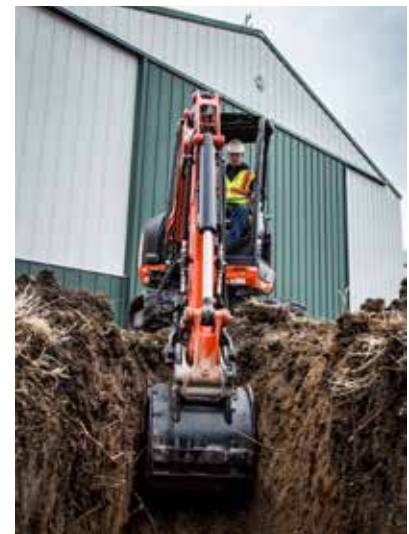
# Standard Tail Swing Excavators

	K008-3T4	KX018-4	KX71-3ST4	KX033-4 <sup>1</sup>
<b>Engine Type (Kubota)</b>	3-cylinder, Tier 4 Final		4-cylinder, Tier 4 Final	3-cylinder, Tier 4 Final
<b>Horsepower (gross)<sup>2</sup></b>	10.3	16.1	24.4	24.8
<b>Displacement (cu. in.)</b>	44	54.8	91.4	100.5
<b>Overall Length (transport)</b>	9' 0"	12' 2.1"	14' 11"	15' 6"
<b>Overall Height</b>	7' 4"	7' 7"	8' 0"	8' 1"
<b>Overall Width</b>	2' 10" / 2' 4" <sup>3</sup>	4' 3.2" / 3' 3" <sup>3</sup>	4' 11"	5' 1"
<b>Operating Weight (lbs.)<sup>4</sup></b>	2,200	3,747	6,305	7,420
<b>Rear Swing Clearance</b>	12.6"	16.5"	18.1"	18.7"
<b>Maximum Digging Depth</b>	5' 8"	7' 9.7"	9' 9"	10' 6" / 12' 2" <sup>1</sup>
<b>Maximum Dumping Height</b>	6' 8"	7' 9.7"	10' 5"	11' 7"
<b>Pump Capacity (gpm)</b>	5.6	12.0	21.9	26.5
<b>Auxiliary Hydraulic Line Flow Rate (gpm)</b>	5.6	7.4	13.4	15.8
<b>Bucket Breakout Force (lbf.)</b>	2,200	3,594	6,350	8,138
<b>Maximum Traveling Speed (mph)</b>	1.2 / 2.5	1.4 / 2.6	1.6 / 2.8	1.9 / 2.9
<b>Ground Contact Pressure (psi)<sup>4</sup></b>	3.41	3.7	3.9	4.365

## OPTIONAL IMPLEMENTS

<b>Hydraulic Breaker (ft./lb.)</b>	200	300	350	500
<b>Hydraulic Thumb</b>	N/A		Optional	
<b>Pin-On Bucket</b>	8–16"	9–18"	12–24"	
<b>Quick Attach Buckets</b>	N/A	9–18"	12–36"	
<b>Quick Coupler</b>	N/A		Mechanical	

1 – KX033-4 available with an extendable dipper arm; 2 – SAE J1995; 3 – Variable width tracks; 4 – Canopy, rubber







## Excavators

KX040-4 | **NEW MODEL** KX057-5 | KX080-4S2

**Get down to bedrock with these powerhouse excavators. The KX series has earned high market acclaim for outstanding utility and exceptional, efficient operation.**

- › Remarkable breakout force of 14,660 lbs. ensures high productivity in the toughest of applications (KX080-4)
- › Advanced Load-Sensing Hydraulic System provides optimum oil flow to each cylinder, making operation under any load easier and smoother
- › Kubota's original ECO PLUS® prioritizes fuel economy and helps support the environment (KX040-4)
- › Hydraulic 6-in-1 blade for KX040-4 angles 25 degrees and tilts 10 degrees to make leveling and backfilling work incredibly easy
- › Oil-flow settings are adjusted and stored via a new digital panel for quick retrieval from job to job
- › Superior cabin design features air conditioner, two-pattern selection system, 2-speed travel switch, deluxe suspension seat, and retractable seat belt
- › Triple Open Covers, ground-level access, and angle track frame give you easy, hassle-free maintenance

### **NEW to KX057-5 Excavators**

- › NEW 7" LCD Color Display
- › LED Lights (Standard)
- › Keyless Start (Optional)
- › Rearview Camera (Optional)
- › Dual adjustable seat and console
- › Improved AC system
- › Quieter cab



# Standard Tail Swing Excavators

	KX040-4	KX057-5	KX080-4S2
<b>Engine Type (Kubota)</b>	3-cylinder, turbocharged, Tier 4 Final		4-cylinder, Tier 4 Final
<b>Horsepower<sup>1</sup></b>	40.4	47.6	66.6
<b>Displacement (cu. in.)</b>	111.4	159.6	203.3
<b>Overall Length (transport)</b>	16' 8.2"	18' 1.3"	21' 1.9"
<b>Overall Height</b>	8' 1.8"	8' 4.4"	8' 4"
<b>Overall Width</b>	5' 6.9"	6' 5.2"	7' 2.6"
<b>Operating Weight (lbs.)</b>	9,195 <sup>2</sup>	12,346 <sup>2</sup>	18,596 <sup>3</sup>
<b>Rear Swing Clearance</b>	17.7"	11.4"	14.2"
<b>Maximum Digging Depth</b>	11' 2.7"	12' 9"	15' 1.1"
<b>Maximum Dumping Height</b>	12' 9.5"	13' 8.6"	17' 2.7"
<b>Pump Capacity (gpm)</b>	24.4	39.4	44.6
<b>Auxiliary Hydraulic Line Flow Rate (gpm)</b>	17.2 / 9.8	19.8 / 9.8	26.4 / 14.7
<b>Bucket Breakout Force (lbf.)</b>	9,535	10,172	14,660
<b>Maximum Traveling Speed (mph)</b>	1.8 / 3.1	1.8 / 3.1	1.7 / 3.0
<b>Ground Contact Pressure (psi)</b>	4.53 <sup>2</sup>	4.6 <sup>2</sup>	5.25 <sup>3</sup>

## OPTIONAL IMPLEMENTS AND ACCESSORIES

<b>Hydraulic Breaker (ft./lb.)</b>	500	750	750 / 1200
<b>Hydraulic Thumb</b>		Optional	
<b>Pin-On Bucket</b>	12–36"	N/A	18–60"
<b>Quick Attach Buckets</b>	12–39"	12–48"	18–60"
<b>Quick Coupler</b>	Mechanical/Hydraulic		Mechanical
<b>Hydraulic Augers</b>		9"–36"	
<b>Canopy Lights</b>		Optional	
<b>Travel Alarm</b>		Optional	
<b>Angle Blade</b>		Optional	

1 – SAE J1995; 2 – Canopy, rubber; 3 – Cab, rubber





## Excavators

U17 | U25 | U27-4 | U35-4 | All New Model U48-5 | U55-5 New Model

**The U Series excavators offer performance, durability, convenience, and comfort to help you tackle tougher jobs in even tighter spaces.**

- › Two-pattern selection system lets operator choose ISO or SAE operating pattern
- › Zero and tight tail swing offer excellent balance, stability, and faster operations in confined areas
- › Hydraulic variable-width track frame retracts to fit through gates, expands for stable operation (U17)
- › Kubota diesel engine improves fuel efficiency, increases output and torque rise, and decreases noise and vibration
- › Unique hydraulic system and large-capacity variable displacement pumps deliver the best performance-matched boom, arm, and bucket movements in the industry
- › The new U27-4 has a best-in-class dig depth of 9' 5" and provides one of the largest operator stations in the industry with a tight tail swing design
- › Optional cabs offer spacious operator area with air conditioning, interior light, and windshield wiper/washer for comfortable and efficient all-weather operation ((U35-4, U48-5, and U55-5)
- › Digital display enhances productivity and makes operation easier

### **NEW to U48-5 and U55-5:**

- › NEW 7" LCD Color Display
- › LED Lights (Standard)
- › Keyless Start (Optional)
- › Rearview Camera (Optional)



## Zero and Tight Tail Swing Excavators

	U17	U25	U27-4	U35-4	U48-5	U55-5
<b>Engine Type (Kubota)</b>	3-cylinder, Tier 4 Final	Kubota D1105-E4	3-cylinder, Tier 4 Final		Kubota V2607	4-cylinder, Tier 4 Final
<b>Horsepower<sup>1</sup></b>	16.1	20.9	20.8	24.8	38.8	47.6
<b>Displacement (cu. in.)</b>	54.8	68.5	68.5	100.5	159.6	159.6
<b>Overall Length (transport)</b>	11' 7"	13' 7"	13' 6"	15' 7"	211.4	18' 0"
<b>Overall Height</b>	7' 8"	7' 11"	7' 11"	8' 1.2"	100.4	8' 4"
<b>Overall Width</b>	3' 3" / 4' 1" <sup>2</sup>	4' 11"	4' 11"	5' 6.9"	77.2	6' 5"
<b>Operating Weight (lbs.)<sup>3</sup></b>	3,703	5,625		8,129	10,593	12,247
<b>Rear Swing Clearance</b>	0"		1.6"	2"	1.2"	2.5"
<b>Maximum Digging Depth</b>	7' 7"	9' 3"	9' 5"	9' 8.9"	11' 1"	11' 11"
<b>Maximum Dumping Height</b>	8'	10' 6"	10'	11' 0.7"	12' 5"	13' 1"
<b>Pump Capacity (gpm)</b>	11.9	7.6 / 5.1	20.3	26.5	31.4	39.4
<b>Auxiliary Hydraulic Line Flow Rate (gpm)</b>	7.32	12.7		15.8	18.5	19.8 / 9.8
<b>Bucket Breakout Force (lbf.)</b>	3,417	5,765	7,014	7,924	7,419	10,172
<b>Maximum Traveling Speed (mph)</b>	1.4 / 2.6	1.3 / 2.9	1.6 / 2.7	1.9 / 2.9	1.7/3.1	1.8 / 3.1
<b>Ground Contact Pressure (psi)<sup>2</sup></b>	3.8	3.32	3.321	4.89	---	4.6,

### OPTIONAL IMPLEMENTS AND ACCESSORIES

<b>Canopy Lights</b>	Optional					
<b>Hydraulic Hammer (ft./lb.)</b>	300	350	500		750	
<b>Hydraulic Thumb</b>	N/A	Optional				
<b>Pin-On Buckets</b>	9-18"	12-24"			N/A	
<b>Quick-Attach Buckets</b>	9-18"	9-24"	12-36"	12-39"	12-48"	
<b>Quick Coupler</b>	Mechanical					
<b>Spark Arrest Muffler</b>	Optional				DPF	
<b>Steel Tracks</b>	N/A	11.8"			15.7"	
<b>Hydraulic Augers</b>	9" - 36"					
<b>Travel Alarm</b>	Optional					

1 – SAE J1995; 2 – Variable Width Track; 3 – Canopy, rubber





## Wheel Loaders

R430 | New R540 and R640 Models

**Our highly versatile R Series wheel loaders are equipped with state-of-the-art features to offer unrivaled visibility, unrelenting power, and unmatched productivity for many worry-free years to come.**

- › 4-wheel drive, 100% on-demand differential lock, and rear frame oscillation provide excellent traction and stability
- › The ultra-comfortable, enclosed cab ensures year-round comfort with great visibility, a suspension seat, and hanging-type foot pedals
- › Easy access makes engine maintenance simple
- › Equipped with Kubota's own powerful Tier 4 Final diesel engine
- › Joystick mounted FnR switch allows on-the-go directional changes without clutching or braking (Only on the R540 and R640 models)
- › Make fast, safe, and easy attachment changes with the Quick Coupler

### **New R40 Wheel Loader**

- › Improved visibility - larger front window; full size right window (door size); new delta shaped wheel loader arms
- › Operator comfort - moved console of switches to the right side of the cab increasing foot and leg space; R540 multi function control lever is now standard
- › Performance - added operating weight increases stability and lift performance

# Wheel Loaders

	R430 Canopy / Cab	R540 Canopy / Cab	R640 Canopy / Cab
<b>Engine Type</b> (Kubota, liquid-cooled, diesel)	3-cylinder, Turbocharged, Tier 4 Final	4-cylinder, Tier 4 Final	4-cylinder, turbocharged, Tier 4 Final
<b>Horsepower (gross)*</b>	47.6	51.0	64.3
<b>Operating Weight (lbs.)</b>	7,758 / 8,232	9,888 / 10,285	11,177 / 11,563
<b>Bucket Breakout Force (lbf.)</b>	5,215	7,761	10,415
<b>Loader Boom Linkage</b>	Hybrid Link		Hybrid
<b>Standard Bucket Capacity (cu. yd.)</b>	0.5	0.85	1.0
<b>Tipping Load Straight w/ Bucket (lbs.)</b>	5,335 / 5,743	6,437 / 6,768	7,452 / 7,760
<b>Tipping Load Straight w/ Pallet Forks (lbs.)</b>	3,494 / 3,770	4,960 / 5,202	5,820 / 6,063
<b>Tipping Load Full Turn w/ Bucket (lbs.)</b>	4,596 / 4,949	5,644 / 5,930	6,526 / 6,812
<b>Tipping Load Full w/ Pallet Forks (lbs.)</b>	3,009 / 3,251	4,365 / 4,586	5,115 / 5,313
<b>Rated Operating Capacity (SAE 50%) w/ Bucket (lbs.)</b>	1,504 / 1,625	2,822 / 2,965	3,263 / 3,406
<b>Rated Operating Capacity w/ Pallet Forks (lbs.)</b>	2,298 / 2,474 w/bucket	2,183 / 2,293	2,558 / 2,657
<b>Angle of Articulation</b>	40°		±40°
<b>Frame Oscillation</b>	±8°		±8°
<b>Dump Clearance</b>	7' 2"	8' 0"	7' 9"
<b>Hinge Pin Height</b>	9' 2"	10' 7"	10' 8"
<b>Reach Fully Raised</b>	2' 9"	2' 7"	2' 9"
<b>Turn Radius (loader clearance)</b>	12' 1"	13' 8"	13' 10"
<b>Turn Radius (tire clearance)</b>	10' 1"	11' 1"	12' 0"
<b>Overall Length w/ Bucket</b>	14' 4"	17' 8"	18' 0"
<b>Overall Width w/o Bucket</b>	4' 12"	5' 7"	5' 11"
<b>Overall Height</b>	8' 3"	8' 1"	8' 2"
<b>Tread</b>	3' 10"	4' 5"	4' 7"
<b>Wheelbase</b>	5' 10"	6' 5"	6' 7"
<b>Auxiliary Hydraulic Flow (gpm)</b>	11.2	14.2	17.8
<b>Brakes – Service</b>	Enclosed wet disc		Enclosed, self-adjusting, wet disc
<b>Brakes – Parking</b>	Spring applied hydraulic released wet disc		Spring applied, hydraulic release, wet disc
<b>Front/Rear Axle Traction Lock</b>	Limited slip differential		Diff-lock (both axles), 100%, on-demand
<b>Transmission Type</b>	Hydrostatic	HST, 2-speed	4 mode, HST, 5-speed
<b>Traction Force (lbs.)</b>	5,485	6,541	8,588
<b>Travel Speed (mph)</b>	3.0 - 4.8 / 12.4 / 20.0		12.4
<b>ADDITIONAL IMPLEMENTS AND ACCESSORIES</b>			
<b>Backhoe</b>	Rear		N/A
<b>Light Material Bucket (cu. yd.)</b>	0.75	1.0	1.5
<b>Pallet Fork</b>			48"
<b>Scrap Grapple Bucket</b>			72"

\* SAE J1995





## The New RTV520

### Mighty Capability. Nimble Package.

- › Powerful Kubota Liquid-Cooled EFI Engine. A more powerful 2-cylinder engine provides increased horsepower, with quiet and reliable muscle for any job. Kubotabuilt, the durable engine is liquid-cooled to improve efficiency and ensure consistent performance throughout the day. Electronic Fuel Injection (EFI) makes starting the engine in cold-weather easier, and provides instant power with greater throttle control
- › Capable Towing Capacity. The reliable engine delivers capable towing capacity, made simple with a standard trailer hitch for greater versatility and an ability to attach trailers or pull-behind equipment. For those who refuse to compromise, the mighty RTV520 can tackle even the toughest jobs with its 1,168 lbs towing capacity
- › Comfortable Seat Design. The stylish matte-black and contoured seats have been redesigned with a 30% softer padding material, to provide better comfort during long rides
- › Quiet Engine. A new, water-cooled 2-cylinder engine produces less noise than both the competition and previous models, making for a quiet and enjoyable ride
- › Narrow Stance. The RTV520's compact dimensions let you nimbly maneuver into and out of tight spaces with ease
- › Tight Turning Radius. With a tight turning diameter of just 21.7 ft., the RTV520 can work in narrow sites where bigger utility vehicles can't go
- › Metal Cargo Bed. Unlike the plastic cargo beds found on competing utility vehicles, the RTV520 features a durable metal cargo bed that can withstand hard use
- › New Radiator with Screen. The RTV520's radiator features a screen that prevents mud and grass from sticking to the radiator. A window provide superior accessibility for cleaning and maintenance

## RTV520

## RTV520

	GENERAL PURPOSE	DELUXE
<b>Engine Type (Kubota)</b>	2-cylinder, gasoline, water-cooled, EFI	
<b>Horsepower (net)*</b>	17.4	
<b>Transmission</b>	Variable Hydro Transmission (VHT Plus)	
<b>Brakes (front/rear)</b>	Dry disc brake	
<b>Fuel Capacity (gal.)</b>	5.1	
<b>Towing Capacity (lbs.)</b>	1,168	
<b>Cargo Bed Capacity (lbs.)</b>	935	
<b>Weight (lbs.)</b>	1,378	1,393
<b>Length (in.)</b>	105.1	111.2* including front guard
<b>Overall Height (in.)</b>	74"	
<b>Width (in.)</b>	54.7"	
<b>Ground Clearance (front/rear axle in.)</b>	8.9" / 6.7"	
<b>Color</b>	Orange/Camouflage (Realtree® *2 Hardwoods®)	Orange

## ADDITIONAL IMPLEMENTS AND ACCESSORIES

<b>Alloy Wheels</b>	Optional	Standard
<b>Steel Front Guard</b>	Optional	Standard
<b>Speedometer</b>	Optional	
<b>Cab Systems</b>	Optional	
<b>Canopy and Windshield</b>	Optional	
<b>3,500 lb. Winch</b>	Optional	

\* SAE J 1940 Net; \*\* Realtree® Hardwoods Camouflage is a registered trademark of Jordan Outdoor Enterprises, Ltd.







## RTV-XG850 - SIDEKICK

### The gas-powered, large chassis RTV-XG850 Sidekick is where “Durability Meets Speed”

- › The Sidekick is built upon the robust, heavy-duty RTV-X platform to provide proven durability and performance
- › Electronic Fuel Injection (EFI) and a powerful 48 HP gasoline, water-cooled engine provide plenty of torque, astonishingly quick acceleration, and high transport speed (up to 40 mph)
- › Idle Speed Control (ISC) and highland correction ensure stable power for any situation
- › The Continuously Variable Transmission with centrifugal clutch (CVT-Plus) provides faster acceleration, smoother operation, and controlled braking with engine-assisted deceleration
- › The cogged belt on the CVT-Plus is kept tight for minimal slippage and excellent durability, fully shielded to keep out dust and water, and cooled with a large fan for even greater longevity
- › Light at low speeds and firm at high speeds, the Sidekick's speed-sensitive 45A Electronic Power Steering (EPS) is standard on all models and offers exceptional steering control, improving not only handling, but also stability
- › EPS ensures outstanding performance even when the cabin/cargo box is heavily loaded or the snow blade is attached—operating at higher speeds, EPS safeguards against over-steering, increasing stability and control
- › Even when fully loaded, the Sidekick won't bottom out—front and rear adjustable independent suspension delivers a smooth ride with plenty of clearance
- › The aggressive style is offered in four distinct colors, including the Special Edition Black Model, which comes with alloy wheels, spray-on bed liner, and visually distinct design and graphics to signify being “ready for anything”











# RTV-XG850 - SIDEKICK

	RTV-XG850 General Purpose		RTV-XG850 Worksite		RTV-XG850 Special Edition
Engine Type (Kubota)	2-cylinder, 4-cycle, Gas, DOHC				
Horsepower (gross)*	48.3				
Transmission	CVT PLUS (CVT with centrifugal clutch)				
Power Steering	Speed sensitive Electric Power Steering				
Brakes (front/rear)	4-wheel hydraulic disc brake				
Fuel Capacity (gal.)	8.64				
Weight (lbs.)	1761				
Overall Height	79.5"				
Ground Clearance (rear axle)	9.9"				
Width	63.2"				
Body Color	Orange	Orange/Green	Camouflage**	Black	
<b>ADDITIONAL ACCESSORY OPTIONS</b>					
Alloy Wheels	Optional			Standard	
Hydraulic Bed Lift	Optional electric hydraulic power lift				
Steel Front Guard	Optional	Standard			
Spray-On Bed Liner	N/A	Optional	Standard		

\* SAE J1995; \*\* Realtree® AP Camouflage is a registered trademark of Jordan Outdoor Enterprises, Ltd.

Visit [KubotaUSA.com](http://KubotaUSA.com) for a full listing of accessories and attachments.





## RTV-X900

Whether you're hauling half a ton of cargo on the job site or feeding livestock out in the pastures, the smooth-riding, hard-charging RTV-X900 gets it done.

- › Our RTV-X900 offers a 3-cylinder, liquid-cooled, 21.6-horsepower\* Kubota diesel engine and has a well-earned reputation for dependable performance even in the harshest terrains
- › 1,300 lbs. towing capacity with standard front and rear two-inch hitch receivers at the front and back
- › Up to 15.2 cubic feet of cargo — heavy-duty steel cargo box can carry up to a half-ton (1,102 lbs.) of tools, firewood, gear, supplies, and whatever you need to haul from here to there and back again
- › 2-speed in-line shift allows you to shift less often and maintain better control
- › Front and rear height-adjustable independent suspension ensures an exceptional ride, and Extra Duty IRS (Independent Rear Suspension) sets a new standard for durability
- › Kubota's advanced VHT-X (Variable Hydraulic Transmission) offers a wide torque band, advanced designed HST motor, and large oil coolers to boost durability and increase performance
- › VHT-X transmission's Dynamic Braking provides additional braking power and greater driving control, making you feel more secure, especially when traveling down long inclines



# RTV-X900

	RTV-X900 General Purpose	RTV-X900 Worksite
Engine Type (Kubota)	3-cylinder, diesel	
Horsepower (gross)**	21.6	
Transmission	Variable Hydro Transmission (VHT-X)	
Power Steering	Hydrostatic power	
Brakes (front/rear)	Wet disc brake	
Fuel Capacity (gal.)	7.9	
Weight (lbs.)	1907	1973
Overall Height	79.5"	
Ground Clearance	10.4"	
Width	63.2"	
Cargo Capacity (lbs.)	1,102	
Body Color	Orange	Orange/Camouflage***

## ADDITIONAL ACCESSORY OPTIONS

Alloy Wheels	Optional	
Hand Throttle	Optional	
Hydraulic Bed Lift	Optional	Standard
Steel Front Guard	Simple, center only	Center and bumper
Spray-On Bed Liner	N/A	Optional

\* Manufacturer estimate; \*\* SAE J1995; \*\*\* Realtree® AP Camouflage is a registered trademark of Jordan Outdoor Enterprises, Ltd.

Visit [KubotaUSA.com](http://KubotaUSA.com) for a full listing of accessories and attachments.





## RTV-X1120

**A step up in power, torque, performance, and style, the RTV-X1120 has everything you need to get the job done.**

- › The RTV-X1120 boasts a 24.8-horsepower\* Kubota diesel engine, providing a top speed of 29 mph, for demanding jobs that require plenty of power
- › 1,300 lbs. towing capacity with standard front and rear two-inch hitch receivers
- › Up to 15.2 cubic feet of cargo — heavy-duty steel cargo box can carry up to a half-ton (1,102 lbs.) of tools, firewood, gear, supplies, and whatever you need to haul from here to there and back again
- › 2-speed in-line shift allows you to shift less often and maintain better control
- › Half doors help keep out the dirt, brush, and other external objects while letting you enter and exit with ease
- › Front and rear height-adjustable independent suspension ensures an exceptional ride, and Extra Duty IRS (Independent Rear Suspension) sets a new standard for durability
- › Kubota's advanced VHT-X (Variable Hydraulic Transmission) offers a wide torque band, advanced designed HST motor, and large oil coolers to boost durability and increase performance
- › VHT-X transmission's Dynamic Braking provides additional braking power and greater driving control, making you feel more secure, especially when traveling down long inclines



# RTV-X1120

	RTV-X1120 General Purpose	RTV-X1120 Worksite	RTV-X1120 Deluxe
Engine Type (Kubota)	3-cylinder, diesel		
Horsepower (gross)**	24.8		
Transmission	Variable Hydro Transmission (VHT-X)		
Power Steering	Hydrostatic power		
Brakes (front/rear)	Wet disc brake		
Fuel Capacity (gal.)	7.9		
Weight (lbs.)	1995	2061	
Overall Height	79.5"		
Ground Clearance	10.4"		
Width	63.2"		
Cargo Capacity (lbs.)	1,102		
Body Color	Orange	Orange/Camouflage***	Orange/Camouflage***
<b>ADDITIONAL ACCESSORY OPTIONS</b>			
Alloy Wheels	N/A	Optional	Standard
Hand Throttle	Optional		
Hydraulic Bed Lift	Optional	Standard	
Steel Front Guard	Simple, center only	Center and bumper	Center, bumper, and lens
Spray-On Bed Liner	N/A	Standard	

\* Manufacturer estimate; \*\* SAE J1995; \*\*\* Realtree® AP Camouflage is a registered trademark of Jordan Outdoor Enterprises, Ltd.

Visit [KubotaUSA.com](http://KubotaUSA.com) for a full listing of accessories and attachments.





## RTV-X1100C

**Experience luxurious driving comfort in the first utility vehicle in the industry to offer a factory-installed, climate-controlled cab.**

- › RTV-X1100C features a premium grand cab that is built around a unibody chassis frame that's virtually airtight, soundproof, and rattle-free — the standard, factory-installed A/C, heat, and defrost ensures that you'll ride in comfort year round
- › The RTV-X1100C boasts 24.8-horsepower\* Kubota diesel engine for demanding jobs that require plenty of power
- › 1,300 lbs. towing capacity with standard front and rear two-inch hitch receivers at the front and back
- › Up to 15.2 cubic feet of cargo — heavy-duty steel cargo box can carry up to a half-ton (1,102 lbs.) of tools, firewood, gear, supplies, and whatever you need to haul from here to there and back again
- › Front PTO attachment options take your RTV-X1100C to a new level of versatility and performance
- › 2-speed in-line shift allows you to shift less often and maintain better control
- › Front and rear independent suspension ensures an exceptional ride, and Extra Duty IRS (Independent Rear Suspension) sets a new standard for durability
- › Kubota's advanced VHT-X (Variable Hydraulic Transmission) offers a wide torque band, advanced designed HST motor, and large oil coolers to boost durability and increase performance
- › VHT-X transmission's Dynamic Braking provides additional braking power and greater driving control, making you feel more secure, especially when traveling down long inclines



# RTV-X1100C

		RTV-X1100C	
Engine Type (Kubota)		3-cylinder, diesel	
Horsepower (gross)**		24.8	
Transmission		Variable Hydro Transmission (VHT-X)	
Power Steering		Hydrostatic power	
Brakes (front/rear)		Wet disc brake	
Fuel Capacity (gal.)		7.9	
Weight (lbs.)		2370	
Overall Height		82.3"	
Ground Clearance		10.4"	
Width		65.4"	
Cargo Capacity (lbs.)		1,102	
Body Color		Orange	Camouflage***

## ADDITIONAL ACCESSORY OPTIONS

Alloy Wheels	Optional or Standard	Optional
Hand Throttle		Standard
Hydraulic Bed Lift		Standard
Steel Front Guard		Center, bumper, and lens
Spray-On Bed Liner		Optional

\* Manufacturer estimate; \*\* SAE J1995; \*\*\* Realtree® AP Camouflage is a registered trademark of Jordan Outdoor Enterprises, Ltd.

Visit [KubotaUSA.com](http://KubotaUSA.com) for a full listing of accessories and attachments.





## RTV-X1140

**From industry-leading cargo capacity to generous seating for up to four adults, this best-selling utility workhorse has been improved top to bottom to give you the best possible performance and comfort across a wide range of jobs.**

- › K-vertible Cargo Transformation System — two- and four-passenger configuration in less than a minute
- › Powerful Kubota 3-cylinder, liquid-cooled, 4-cycle, 24.8-horsepower\* diesel engine
- › Exclusive Kubota 2-range VHT-X (Variable Hydraulic Transmission)
- › Top speed of 25 mph and 1,300 lbs. towing capacity
- › Quick, responsive hydrostatic power steering
- › Dealer-installed full cab enclosure available
- › Newly designed OSHA+SAE Rollover Protection System for both front and back row seats provides cleaner look and easier cargo loading
- › 20% larger, clog-resistant radiator for simpler maintenance and improved performance
- › Wet disc brakes for smooth, consistent braking and excellent durability
- › Independent front and independent rear suspensions and a long wheelbase deliver a smooth, stable ride
- › Standard 19.1 cu. ft./9.9 cu. ft. (two-seat/four-seat configurations) cargo bed with hydraulic lift capability in either configuration (up to 1,102 lbs. capacity)



# RTV-X1140

## RTV-X1140

<b>Engine Type (Kubota)</b>	3-cylinder, 4-cycle, diesel, OHV	
<b>Horsepower (gross)*</b>	24.8	
<b>Transmission</b>	Variable Hydro Transmission (VHT-X)	
<b>Power Steering</b>	Hydrostatic power	
<b>Brakes (front/rear)</b>	Wet disc brake	
<b>Fuel Capacity (gal.)</b>	7.9	
<b>Weight (lbs.)</b>	2370	
<b>Overall Height</b>	79.7"	
<b>Ground Clearance (rear axle)</b>	9.4"	
<b>Width</b>	63.2"	
<b>Cargo Capacity (lbs.)</b>	1,102 (long) / 661 (short)	
<b>Body Color</b>	Orange	Camouflage**

### ADDITIONAL ACCESSORY OPTIONS

<b>Alloy Wheels</b>	Optional or Standard	Optional
<b>Hand Throttle</b>	Standard	
<b>Hydraulic Bed Lift</b>	Standard	
<b>Steel Front Guard</b>	Center and bumper	Center, bumper, and lens
<b>Spray-On Bed Liner</b>	Optional	

\* SAE J1995; \*\* Realtree® AP Camouflage is a registered trademark of Jordan Outdoor Enterprises, Ltd.

Visit [KubotaUSA.com](http://KubotaUSA.com) for a full listing of accessories and attachments.





## T Series

T2090BR | T2290KW | T2290KWT

**Easy to operate, fun to drive, the ALL improved Kubota T Series is durable, and packed with premium features to keep you mowing efficiently and comfortably.**

- › Equipped with high power 20- and 21.5-horsepower gasoline engines
- › All models are equipped with hydrostatic transmissions (HST) for precise control
- › High-back seat (with suspension on T2290) provides extra cushioning and support, with dual armrests (optional on T2090) for comfort
- › The thicker and higher-positioned steering wheel reduces fatigue and enhances operator comfort and control
- › Convenient 12V power outlet lets you charge your phone or power accessories like an air compressor
- › Short 14" turning radius allows easy maneuvering around difficult objects
- › Mower height adjusts from 1" to 4" right from the operator's seat with simple dial-cam setting
- › Upgraded fabricated mower deck, along with new tubular-frame structure, improves strength, rigidity, and durability
- › Ductile cast iron front axle is strong and durable, handling all sorts of bumps & shocks
- › Compatible with a full line of performance-matched, quick-attach front implements



# T Series

	T2090BR	T2290KW	T2290KWT
<b>Engine Type</b>	OHV, air-cooled, gasoline, 2-cylinder, V-twin		
<b>Engine Model</b>	Briggs & Stratton Professional 40S8	Kawasaki FR651V	
<b>Horsepower (gross)</b>	20*	21.5**	
<b>Transmission</b>	Hydrostatic		
<b>Fuel Capacity (gal.)</b>	3.6		
<b>Speed (mph) (forward)</b>	0-5.7		0-6.7
<b>Length</b>	74.8"	75.2"	
<b>Deck Size</b>	42"		48"
<b>Width (w/ mower)</b>	54.8"	60.6"	
<b>Weight (lbs.)</b>	595	622	661

## ADDITIONAL IMPLEMENTS AND ACCESSORIES

<b>Armrest Kit</b>	ZG1341	Standard	
<b>Grass Catcher (blower not necessary)</b>	GCK42-90T		GCK48-90T
<b>Mulching Kit</b>	T2832		T2838
<b>Front Push Blade (48")</b>	T2833		
<b>Two-Stage Snowblower (46")</b>	T2834		

## MID-MOUNT MOWER SPECIFICATIONS

	RCK42P-90T	RCK48P-90T
<b>Number of Blades</b>	2	3
<b>Cutting Width</b>	42"	48"
<b>Cutting Height</b>	1-4"	
<b>Height Adj. Increments</b>	1/4"	
<b>Lift System</b>	Manual w/gas assist	

\* SAE J1940; \*\* SAE J1995





## GR Series

GR2020G | GR2120

**With Kubota's revolutionary Glide Steer, all-wheel drive, plus tight turning, even difficult mowing conditions are now effortless.**

- › Your choice of a 3-cylinder, 17-horsepower Kubota diesel engine or a 2-cylinder, 20-horsepower Kohler gasoline engine
- › Glide Steer provides excellent turning maneuverability with front wheels that turn up to 70 degrees while preventing turf damage
- › All-Wheel Drive (AWD) characteristics provide outstanding traction needed for mowing on rolling terrain
- › Versatile HST transmission is controlled by a single foot pedal for a smooth and comfortable ride
- › Shaft-driven mower, transmission, and PTO offer smooth, virtually trouble-free operations
- › Cruise control, full-flat operator platform and a comfortable high-back, adjustable suspension seat increase operator comfort
- › 5" deep, 48" and 54" contoured design mower decks produce professional results every time
- › Equipped with Kubota's Reverse Awareness System (KRA) for additional safety when mowing in reverse
- › Variety of implements available for year-round versatility, including a grass catcher, two-stage snowblower, front blade, and mulching kit



## GR Series

	GR2020G	GR2120
Engine Type	Air-cooled, gasoline, 2-cylinder	Liquid-cooled, diesel, 3-cylinder
Engine Model	Kohler	Kubota
Horsepower (gross)	20.5*	17**
Transmission	Hydrostatic	
Steering System	Glide Steer, hydrostatic power steering	
Deck Size	48"	48" / 54"
Overall Length	77.2"	
Overall Width (w/mower)	61" (w/48")	66.9" (w/54")
Weight (lbs.) (w/mower)	871 (w/48")	970 (w/54")

## ADDITIONAL IMPLEMENTS AND ACCESSORIES

Front Blade	48"
Grass Catcher	3-bag, 10-bushel capacity
Mulching Kit	Optional
Snowblower	2-stage 46"
Rear Weight Bracket	Optional
Suitcase Weights	Optional

## MOWER SPECIFICATIONS

	RCK48-GR	RCK54-GR
Number of Blades	3	
Cutting Width	48"	54"
Cutting Height	1–4"	
Height Adj. Increments	1/4"	
Lift System	Hydraulic	

\* SAE J1940; \*\* SAE J1995





NEW Z200 Series

## New Z200 Series

Z231KW | Z231BR | Z231KH | Z251BR | Z251KH

## The ultimate residential zero-turn mower — combining style, comfort, and performance.

- › Zero-turn steering for superior machine control and precision mowing
- › A 10-gauge steel, welded mower deck provides professional-level cutting performance for homeowners
- › Storage boxes on either side give you a place for tools, lunch, and anything else
- › Cup holders keep your drinks at hand
- › LED headlights allow you to continue mowing in lowlight conditions and come standard on the KH models and is an option on the KW and BR models
- › Wide-tread tires give you better traction and weight distribution to help protect your lawn
- › The K-Lift (mechanical one-push deck-lift pedal) makes adjusting the cutting height simple
- › Z231KW comes with a 42-inch deck to maneuver in and out of intricate spaces smoothly and with ease
- › KH-models are equipped with full seat suspension
- › The Z200 series is covered by a comprehensive four-year, 300-hour factory warranty



## New Z200 Series

	Z231KW-42	Z231BR-48	Z231KH-48	Z251BR-54	Z251KH-54
<b>Engine Type</b>	Air-cooled, gasoline, V-Twin				
<b>Engine Model</b>	Kawasaki FR	Briggs & Stratton Professional Series		Kohler Courage Pro	
<b>Horsepower (gross)</b>	21.5*	22**	25**	21**	25**
<b>Displacement (cu. cm.)</b>	726	724		747	
<b>Transmission</b>	Hydro-Gear™ Commercial ZT2200 Integrated Zero-Turn Transaxle	Hydro-Gear™ Commercial ZT3100 Integrated Zero-Turn Transaxle			
<b>Fuel Tank Capacity (gal.)</b>	3.6	4.3			
<b>Speed (mph) (forward/reverse)</b>	0–6.5 / 0–4	0–8 / 0–4			
<b>Overall Length</b>	74.4"	76.4"			
<b>Overall Width (w/ mower chute down)</b>	55.1"	61.1"	67.3"	61.1"	67.3"
<b>Overall Height</b>	65.3"	65"			
<b>Wheel Base</b>	48.5"	45.5"			
<b>Weight (lbs.)</b>	621	737	749		771

### MOWER SPECIFICATIONS

<b>Mower Deck Type</b>	Pro performance fabricated deck				
<b>Mower Lift System</b>	Mechanical				
<b>Mower Height, Increment</b>	1.5–4.25", 1/4"	1.5–4.5", 1/4"			
<b>Mower Deck Width</b>	42"	48"	54"	48"	54"

### IMPLEMENTS AND ACCESSORIES

<b>Grass Catcher</b>	Optional				
<b>Mulching Kit</b>	Optional				
<b>Seat Suspension Kit</b>	N/A	Optional		Standard	
<b>LED Working Light Kit</b>	Optional			Standard	
<b>Canopy Sunshade &amp; Deck Lift Assist Kit</b>	N/A	Optional			
<b>Arm Rest Kit</b>	Optional	N/A			
<b>Hitch Kit</b>	Optional	N/A			

\* These Kawasaki engines have been tested in accordance with SAE J1995, verified by TÜV Rheinland Group, and certified by SAE International. The gross power ratings of these engines were determined by using measurements according to SAE J1995 which were witnessed by SAE-approved witnesses from TÜV Rheinland Group. Torque ratings of these engines were not certified, determined by using measurements according to SAE J1995 which were witnessed by SAE-approved witnesses from TÜV Rheinland Group. Torque ratings of these engines were not certified by SAE. Actual power and torque output will vary depending on numerous factors, including, but not limited to, the operating speed of the engine in application, environmental conditions, maintenance, and other variables.

\*\* Power (hp) specifications for individual gasoline engine models are rated pursuant to Society of Automotive Engineers (SAE) J1940 or J2723 based on gross output testing performed in accordance with SAE J1995 without the air cleaner and muffler. Gross engine hp will be higher than actual engine power which is affected by accessories, application, engine speed, ambient operating conditions and other factors. The gross engine horsepower information is for comparison purposes only.



## Z400 Series

**NEW MODELS** Z412KW | Z422KW | Z422KWT  
Z411KW | Z421KW | Z421KWT

**Designed for the prosumer who seeks professional performance and durability, as well as comfort and convenience.**

### NEW Z412 and Z422 Features

- › Premium adjustable suspension seat offers thick cushion with high back and a 4" adjustable seat slide that improves comfort and reduces fatigue
- › All deck sizes have 13"x6.5"-6" Front pneumatic tires
- › Powered by the highly acclaimed Kawasaki FS-Series Engines, the Z400 provides the torque you need to power through tall grass and rugged environments
- › Light and smooth steering lever operation with dampers that have three adjustment positions
- › The Z400 is driven by the new Hydro-Gear ZT-3600 transmission, a Kubota exclusive, the most dependable and durable in the product class
- › Simple operation of the mower lift pedal efficiently raises the mower deck
- › Maximum forward travel speed of 10 mph contributes to quickly completing the job at hand
- › The operation panel is conveniently and integrally located on the right fender and features a simple, easy-to-operate design
- › With a generous fuel tank capacity of 6.8 U.S. gallons (25.7 L), the Z400 is able to continue operations for up to six hours
- › Convenient 12V power outlet lets you charge your phone or power accessories like an air compressor
- › The seat features a thick cushion construction and slides a full 6" forward and back, allowing even prolonged operations to be undertaken in maximum comfort (Z411 & Z421)



## Z400 Series

	Z412KW-48 Z411KW-48	Z422KW-54 Z421KW-54	Z422KWT-60 Z421KWT-60
Engine Type	Air-cooled, gasoline, 2-cylinder		
Engine Model	Kawasaki FS 651V	Kawasaki FS 730V	
Horsepower (gross)*	22	24	
Displacement (cu. cm.)	726		
Transmission	Hydro-Gear ZT-3600		
Front Tire	13" x 6.5"-6" (Z412 & Z422)		13" x 6.5" - 6"
	13" x 5" x 6"		
Rear Tire	24" x 9.5"-14"		24" x 12"-14"
Fuel Capacity (gal.)	6.8		
Speed (mph) (forward/reverse)	0-10 / 0-5		
Overall Length	48.7"		54.2"
Overall Width (w/ mower chute)	61.1"	67.3"	73.6"
Overall Height (w/ROPS upright)	69.8"		
Weight (lbs.) (w/ mower)	856	870	904

### MOWER SPECIFICATIONS

	RCK48P-400Z	RCK54P-400Z	RCK60P-400Z
Mower Deck Type	Kubota Side Discharge		
Mower Lift System	Mechanical / Foot pedal		
Deck Depth	5"		
Cutting Height	1.5-5"		
Cutting Width	48"	54"	60"
Blade Tip Speed (fpm) (max.)	18,880	18,700	18,300

### ADDITIONAL IMPLEMENTS AND ACCESSORIES

	Z400 Series
Grass Catcher Kit	Optional
Mulching Kit	Optional
Chute Block Kit	Optional
Suspension Seat Kit	Optional
LED Work Light Kit	Optional
Operator Controlled Discharge Chute	Optional
Canopy Sunshade	Optional
Maintenance Lift Kit	Optional

\* SAE J1995

These Kawasaki engines have been tested in accordance with SAE J1995, verified by TÜV Rheinland Group, and certified by SAE International. The gross power ratings of these engines were determined by using measurements according to SAE J1995 which were witnessed by SAE-approved witnesses from TÜV Rheinland Group. Torque ratings of these engines were not certified, determined by using measurements according to SAE J1995 which were witnessed by SAE-approved witnesses from TÜV Rheinland Group. Torque ratings of these engines were not certified by SAE. Actual power and torque output will vary depending on numerous factors, including, but not limited to, the operating speed of the engine in application, environmental conditions, maintenance, and other variables.

Power (hp) specifications for individual gasoline engine models are rated pursuant to Society of Automotive Engineers (SAE) J1940 or J2723 based on gross output testing performed in accordance with SAE J1995 without the air cleaner and muffler. Gross engine hp will be higher than actual engine power which is affected by accessories, application, engine speed, ambient operating conditions and other factors. The gross engine horsepower information is for comparison purposes only.



## Z700 Series

Z751KWi | Z781KWi | Z781KWTi  
 Z724XKW | Z726XKW  
 Z723KH | Z724KH | Z725KH

**Designed for the commercial landscape professional, the Z700 Series offers best in class performance, productivity, comfort and the durability that Kubota is known for.**

### Z700EFI Model Features

- › Kawasaki FX EFI engines feature a fully integrated electronic governor (E-GOV) and a cutting edge ECU control unit. They deliver outstanding performance without power loss
- › EFI Dial Throttle control, delivers infinite effortless engine control
- › LCD Engine Meter, provides all the information you need to keep your Z700 EFI unit running at optimum efficiency
- › 24" Low Profile tires improve hill side stability
- › 12V Power outlet can charge or power many devices

### All Model Features

- › Premium adjustable suspension seat offers a thick cushion with a 19.6" high back and a 6" adjustable seat slide that allows you to find the ideal seating position for maximum comfort
- › New Deck Step indicator provides easier access
- › New Water and Dust Proof safety switches eliminate those failures
- › 6"-deep mower deck and anti-scalp rollers provide fast, clean, superior grass-cutting performance
- › With an 11.2 mph maximum speed, it's Kubota's fastest zero-turn mower
- › Dual Parker® transmission with an integrated pump and motor designed for increased efficiency and simplified maintenance



# Z700 Series

Z751KWi-48
Z781KWTi-60
Z724XKW-3-54
Z726XKW-3-60
Z723KH-3-48
Z724KH-3-54
Z725KH-3-60

<b>Engine Type</b>	Air-cooled, gasoline, V-Twin						
<b>Engine Model</b>	Kawaski FX 730V EFI	Kawaski FX 850V EFI	Kawasaki FX FX 730V	Kawasaki FX FX 801V	KOHLER Command Pro® CV682	KOHLER Command Pro® CV732	KOHLER Command Pro® CV742
<b>Horsepower (gross)</b>	25.5*	29.5*	23.5*	25.5*	22.5**	23.5**	25**
<b>Displacement (cu. cm.)</b>	726	852	726	852	694	694	747
<b>Transmission</b>	Parker HTG14						
<b>Fuel Capacity (gal.)</b>	11.6						
<b>Speed (mph) (forward/reverse)</b>	0–11.2 / 0–5.6						
<b>Overall Length</b>	83.9"						
<b>Overall Width (w/ mower)</b>	61.3"	67.3"/ 73.8"	61.3"/ 67.3"	73.8"	61.3"	67.3"	73.8"
<b>Overall Height (w/ROPS upright)</b>	70.1"						
<b>Wheel Base</b>	50.9"						
<b>Weight (lbs.) (w/ mower)</b>	1,215	1,254/1,285	1,207 / 1,223	1,276	1,212	1,226	1,257

## MOWER DECK SPECIFICATIONS

<b>Mower Deck Type</b>	Commercial fabricated deck						
<b>Mower Deck Width, Lift System</b>	48" Mechanical	54"/60" Mechanical	48" / 54" Mechanical	60" Mechanical	48" Mechanical	54" Mechanical	60" Mechanical
<b>Cutting Height</b>	1–5"						
<b>Height Adj. Increments</b>	1/4"						
<b>Mower Deck Depth</b>	6"						

## IMPLEMENTS AND ACCESSORIES

<b>Premium Suspension Seat</b>	Standard
<b>Grass Catcher</b>	Optional – 10 bushels (48" / 54"), 11 bushels (60")
<b>Mulching Kit</b>	Optional
<b>Operator-Controlled Discharge Chute</b>	Optional
<b>Towing Hitch</b>	Optional
<b>LED Working Light Kit</b>	Optional
<b>Maintenance Lift Kit</b>	Optional
<b>Canopy Sunshade</b>	Optional
<b>Karu Mulching Blade</b>	Optional, 60" only

\* SAE J1995

These Kawasaki engines have been tested in accordance with SAE J1995, verified by TÜV Rheinland Group, and certified by SAE International. The gross power ratings of these engines were determined by using measurements according to SAE J1995 which were witnessed by SAE-approved witnesses from TÜV Rheinland Group. Torque ratings of these engines were not certified, determined by using measurements according to SAE J1995 which were witnessed by SAE-approved witnesses from TÜV Rheinland Group. Torque ratings of these engines were not certified by SAE. Actual power and torque output will vary depending on numerous factors, including, but not limited to, the operating speed of the engine in application, environmental conditions, maintenance, and other variables.

\*\* SAE J1940

Power (hp) specifications for individual gasoline engine models are rated pursuant to Society of Automotive Engineers (SAE) J1940 or J2723 based on gross output testing performed in accordance with SAE J1995 without the air cleaner and muffler. Gross engine hp will be higher than actual engine power which is affected by accessories, application, engine speed, ambient operating conditions and other factors. The gross engine horsepower information is for comparison purposes only.



## SZ Series

**NEW SZ19-36-2 | SZ22-48-2 | SZ26-52-2 | SZ26-61-2**  
 SZ19-36 | SZ22-48 | SZ26-52 | SZ26-61

The Kubota SZ series commercial stand-on is the answer to get more done, faster and more efficiently, in even the tightest spaces while delivering superior comfort and durability.

### All Models

- › Commercial-grade Kawasaki FX & FT EFI gas engines equipped with Hydro-Gear integrated transmissions
- › **Adjustable front baffle on cutting decks (On -2 models: 48", 52" and 61")**
- › Smooth 3-position adjustable dampened controls
- › Tool-less adjustable front reference bar
- › Large operator platform (48-, 52- and 61-inch models)
- › Tool-less tracking adjustment
- › Ergonomic cushion pad
- › No-flat front castors



## SZ Series

	<b>SZ19-36-2</b> <b>SZ19-36</b>	<b>SZ22-48-2</b> <b>SZ22-48</b>	<b>SZ26-52-2</b> <b>SZ26-52</b>	<b>SZ26-6-2</b> <b>SZ26-61</b>
<b>Engine Type</b>	Kawasaki FX600V	Kawasaki FX691V	Kawasaki FT730V-EFI	
<b>Horsepower (gross)*</b>	19 HP	22 HP	26 HP	
<b>Transmission</b>	Hydro-Gear ZT3100	Hydro-Gear ZT3600		
<b>Speed</b>	9 MPH	11 MPH		
<b>Fuel Capacity (gal.)</b>	5.1	6.5		
<b>Deck Type</b>	Fabricated Floating			
<b>Deck (ga)</b>	7 ga top and side skirts w/ 3 ga reinforcement	10 ga top and 7 ga side skirts w/ 3 ga reinforcement w/ adjustable front baffle (on -2 models)		
<b>Deck Spindle &amp; Bearings</b>	1" Shaft w/ Maintenance-Free Seal Bearings			
<b>Deck Size</b>	36"	48"	52"	61"
<b>Cutting Height</b>	Adjustable 1.5" - 4.5"			
<b>Front Tires (Flat-Free)</b>	11" x 6"-5" (-2 models) 11" x 4.0"-5"	13" x 6.5"-6" (-2 models) 13" x 5"-6"		
<b>Rear Tire</b>	20" x 8"-10"	23" x 8.5"-12"	23" x 10.5"-12"	
<b>Weight (lbs.)</b>	831	965	997	1015
<b>Length</b>	62.5"	63.75"		
<b>Height</b>	45"	45.75"		
<b>ATTACHMENTS</b>				
<b>Mulch Kit</b>	SMK36	SMK48	SMK52	SMK61
<b>Discharge Plate</b>	SBP36	SBP48	SBP52	SBP61
<b>Weight Kit</b>	SWK36	SWK48		
<b>Striping Kit</b>	N/A	SSK48	SSK52-61	

\* SAEJ1995





## W Series

WG6 | WGC6 | WG14 | WH15 | WHF19

**Kubota's durable Commercial Walk-Behind Mowers offer options for all commercial mowing, small and large.**

### WG6 / WGC6

- > Die-cast aluminum deck
- > 2.5 bushel bag capacity
- > Zone Start and Blade Brake Clutch models
- > Die-cast aluminum wheels with dual ball bearings
- > Replaceable steel deck edge guards

### WG14 / WH15 / WHF19

- > Electric clutch
- > Operator-adjustable control forces
- > B-Section Aramid Fiber deck belts
- > Electric-start options available
- > Precision-ground double-sealed bearings standard on all models



## Walk-Behind Mowers

	<b>WG6 / WGC6 21" Deck</b>	<b>WG14 – 36" Deck</b>	<b>WH15 – 48" Deck</b>	<b>WHF19 – 52" Deck</b>
<b>Engine Type</b>	Kawasaki FJ180	Kawasaki FS481V	Kawasaki FS541V	Kawasaki FX600V
<b>Horsepower (gross)*</b>	5.5	14.5	15	19
<b>Fuel Capacity (gal.)</b>	0.5	5		
<b>Speed (mph)</b>	4.1	5.1	6	6.7
<b>Transmission</b>	3-speed Gear Drive	5-speed Peerless gear box	2-Hydro-Gear 10cc Variable Displacement Pumps with oil cooler and Parker Wheel Motors	
<b>Mower Deck Type</b>	High Vacuum, Rear Discharge	Fabricated fixed	Fabricated fixed with wear band	Fabricated float with wear band
<b>Deck (ga)</b>	Heavy-duty cast aluminum	7 ga deck with 7 ga skirts		10 ga deck with 10 ga top, 7 ga skirts
<b>Blade Tip Speed (fpm)</b>	N/A	18,784	15,315	18,600
<b>Cutting Height</b>	.75–4"	1.5–4.5"	1.375–4.625"	1.5–5"
<b>Starter</b>	Manual	Manual	Electric	
<b>Hand Controls</b>	Zone Start / Blade Brake Clutch	Pistol Grip	Dual-Lever Hydro Control	
<b>Deck Spindle</b>	N/A	Maintenance-free with 1" shaft		
<b>Spindle Bearings</b>	N/A	Precision-ground double-sealed bearings		
<b>Deck Drive</b>	Direct Drive / Blade Brake Clutch	Warner Mag Stop 125 ft-lb. electric clutch		Warner Mag Stop 175 ft-lb. electric clutch
<b>Front Tires</b>	9 x 2.25	9 x 3.50-4 No-Flat		11 x 4.00-5 No-Flat
<b>Rear Tires</b>	9 x 2.25	13 x 5-6 4-ply	16 x 7.50-8 4-ply	18 x 7.50-8 4-ply
<b>Brakes</b>	N/A	Drum Type	Hydrostatic Dynamic Braking	
<b>Weight (lbs.)</b>	125 / 130	464	660	785
<b>Length</b>	64"	78"		80.7"
<b>Height</b>	38–43"	40.3"	43"	

\* SAE J1995





## ZG200 Series

ZG222 | ZG227

**The professional-quality performance, exceptional comfort, and outstanding reliability of the ZG200 Series make it the ultimate mowing machine for both professionals and homeowners.**

- › Powered by durable 21.1- and 26-horsepower air-cooled Kubota gasoline engines
- › Zero-turn steering for superior navigation
- › Reliable, ultra-smooth, hydrostatic transmission offers superior durability and performance
- › Heavy-duty Pro Commercial Mower Deck features a unique baffling system that improves airflow to discharge grass clippings and an anti-overflow system for professional-looking results
- › Optional mulching system provides a beautiful finish, even in thick grass
- › Foot-operated hydraulic deck-lift system for easy adjustment
- › Spacious platform, comfortable and supportive seating, and an easy-to-reach cup holder for operator comfort
- › Operator-friendly instrument panel puts everything within close reach
- › Convenient mower, HST, and engine access for hassle-free maintenance
- › Foldable ROPS standard



## ZG200 Series

	ZG222-48	ZG227-54/60
<b>Engine Type</b>	Kubota air-cooled, gasoline, 2-cylinder	
<b>Engine Model</b>	Kubota KGZ770-M3	Kubota KGZ770-M2
<b>Horsepower (gross)*</b>	21.1	26
<b>Displacement (cu. cm.)</b>	768	
<b>Transmission</b>	2-HST w/gear reduction	
<b>Fuel Capacity (gal.)</b>	7.1	
<b>Speed (mph) (forward/reverse)</b>	0-9 / 0-5	
<b>Overall Length</b>	82.5"	82.5" / 83.7"
<b>Overall Width (w/mower chute)</b>	61"	67.3" / 75.2"
<b>Overall Height (w/ROPS upright)</b>	69.9"	
<b>Overall Height (w/ROPS folded)</b>	52.8"	
<b>Weight (lbs.) (w/mower)</b>	1,102 / 1,168	1,190 / 1,235

### MOWER SPECIFICATIONS

	ZG222-48	ZG227-54/60
<b>Mower Deck Type</b>	Welded, side discharge	Welded, side discharge
<b>Mower Deck Width / Lift System</b>	48" / Hydraulic	54 or 60" / Hydraulic
<b>Cutting Height</b>	1-5"	
<b>Height Adj. Increments</b>	1/4"	
<b>Mower Deck Depth</b>	6" (48)	6"

### ADDITIONAL IMPLEMENTS AND ACCESSORIES

#### ZG200 Series

<b>Canopy Sunshade</b>	Optional
<b>Grass Catcher</b>	Optional
<b>Mulching Kit</b>	Optional
<b>Working Light Kit</b>	Optional

\* SAE J 1940





## ZG300 Series

ZG327P | ZG327RP

**Built for power, durability, and performance, the ZG300 Series features deep mower decks for exceptional cutting performance.**

- › ZG300 mowers are available with durable Kubota deck air-cooled gasoline engines with 26 gross horsepower
- › Durable HST transmission optimizes performance to achieve maximum results
- › Pro commercial deck is a superior deep mower deck that ensures excellent cutting performance
- › Anti-scalp swivel rollers can rotate a full 360 degrees preventing unsightly turf damage
- › Large-capacity dual fuel tanks on ZG300 Series models
- › Foot-controlled hydraulic deck lift and PTO wet disc clutch make tough jobs easy
- › Unique maintenance lift system allows easy mower access (optional on ZG300 models)
- › Radiator screen is integrated into hood for better sealing performance and reduced likelihood of grass clippings finding their way into the radiator (diesel models)
- › Tie-down for securing onto flatbed truck or trailer for convenient transportation
- › “Flat-free” front caster tires are standard with ZG300 and enable mowing operation without worrisome flat-tire downtime



## ZG300 Series

### ZG327P-60 ZG327RP-60R

Engine Type	Kubota air-cooled, gasoline, 2-cylinder
Engine Model	Kubota KGZ770
Horsepower (gross)*	26
Displacement (cu. cm.)	768
Transmission	2-HST w/gear reduction
Fuel Capacity (gal.)	12.7
Speeds (mph) (forward/reverse)	0–10.6 / 0–5.3
Overall Length	87.8"
Overall Width (w/ mower)	75.2"
Overall Height	75.4"
Weight (lbs.)	1,565

#### MOWER SPECIFICATIONS

Mower Deck Type	Welded, side, or rear discharge
Mower Deck Width / Lift System	60" / Hydraulic
Mower Height / Increment	1–5" / 1/4"
Mower Deck Depth	6.5"

#### ADDITIONAL IMPLEMENTS AND ACCESSORIES

ZG300 Series	
Canopy Sunshade	Optional
Front Utility Blade	Optional
Grass Catcher**	Optional
Mulching Kit	Optional
Spark Arrester	Optional
Striping Kit	Optional
Working Light Kit	Optional
Karu Mulching Blade	Optional

\* SAE J 1940





Product may be shown with optional equipment

## ZD1000 Series | ZD1011 | ZD1021

**Top to bottom, front to back, and inside and out, Kubota's ZD Series of zero-turn mowers is engineered for quality. Versatile and reliable, the ZD1000 compact mower can handle jobs big and small.**

- › The Kubota ProDeck with ACS (Aerodynamic Cutting System™) has smoother airflow and more powerful rotation to ensure more efficient cutting, meaning you can get the job done better and faster
- › Redesigned clean-cut blades have a new shape that improves overall load balance and provides a longer service life
- › Discharge chute has been redesigned with a flexible yet strong material, ensuring a smoother and more uniform discharge of clippings
- › Improved fuel efficiency—up to 22% better
- › Low center of gravity helps improve the weight/balance and provides stability on slopes and uneven ground
- › A two-pedal hydraulic deck-lift system keeps you mowing in spite of obstacles by letting you easily raise and lower the deck with your foot



## ZD1000 Series

	ZD1011-48 / ZD1011-54	ZD1021-60
<b>Engine Type</b>	Kubota liquid-cooled, diesel, 3-cylinder	
<b>Engine Model</b>	Kubota D782-E4-ZD-3	Kubota D902-E4-ZD-2
<b>Horsepower (gross)*</b>	19.3	21.6
<b>Displacement (cu. cm.)</b>	778	898
<b>Transmission</b>	2-HST w/gear reduction	
<b>Fuel Capacity (gal.)</b>	6.0	
<b>Speed (mph) (forward/reverse)</b>	0-9 / 0-5	
<b>Overall Length</b>	87.8"	88.8"
<b>Overall Width (w/mower chute)</b>	61.6" / 67.3"	73.8"
<b>Overall Height (w/ROPS upright)</b>	74.4"	
<b>Front Tires</b>	13 x 5.0-6 smooth pneumatic	13 x 6.5-6 smooth pneumatic
<b>Rear Tires</b>	24 x 9.5-14 low-profile tire	24 x 12.0-14 low-profile tire
<b>Brakes</b>	Wet multi-disks, foot applied, released	
<b>Weight (lbs.) (w/mower)</b>	1,296 / 1,323	1,389

### MOWER DECK SPECIFICATIONS

	RCK48P-1000Z	RCK54P-1000Z	RCK60P-1000Z
<b>Mower Deck Type</b>	Kubota ProDeck with ACS		
<b>Mower Lift System</b>	Hydraulic		
<b>Deck Depth</b>	6"		
<b>Cutting Height</b>	1-5"		
<b>Cutting Width</b>	48"	54"	60"
<b>Blade Tip Speed (fpm) (max.)</b>	17100		18200

### ADDITIONAL IMPLEMENTS AND ACCESSORIES

	ZD1011-48 / ZD1011-54	ZD1021-60
<b>"Catch All" 2-Bag Style Grass Catcher</b>	Optional	
<b>Hitch Kit</b>	Optional	
<b>Operator-Controlled Discharge Chute</b>	Optional	
<b>Work Light Kit</b>	Optional	
<b>Canopy Sunshade</b>	Optional	

\* SAE J1995



## ZD1200 Series

ZD1211 | ZD1211R | ZD1211L | ZD1211RL

**With a bigger engine and wider mower deck, the ZD1200 gets the job done with speed and efficiency. These premium mowers incorporate the best of Kubota's advanced technology in every detail and ensure both superior mowing performance and supreme operator comfort.**

- › The biggest LCD meter in its class shows all of the key indicators you need to maximize cutting performance and operability
- › For faster operation and better ergonomics, the mower deck controls are on the right side within easy reach of your hand, letting you quickly and easily adjust the cutting height
- › Low-profile tires at the rear improve the stability and traction on turns
- › Redesigned HST levers not only provide more legroom but more settings to choose from, ensuring smoother operation, better zero-turn maneuverability, and greater job efficiency
- › A more comfortable, fully padded and reclining bucket seat means less operator fatigue and greater productivity — with dual adjustable armrests, higher backrest, and lumbar support
- › The optional "Catch All" hopper-style grass catcher holds 11.4 bushels of clippings and can be emptied while the operator remains seated



## ZD1200 Series

	ZD1211-60 / ZD1211R-60R	ZD1211L-72 / ZD1211RL-72R
Engine Type	Kubota liquid-cooled, diesel, 3-cylinder	
Engine Model	Kubota D1105-E4-ZD-2	
Horsepower (gross)*	24.8	
Displacement (cu. cm.)	1,123	
Transmission	2-HST w/gear reduction	
Fuel Capacity (gal.)	13.0	
Speed (mph) (forward/reverse)	0–10.6 / 0–5.3	
Overall Length	89"	93.7"
Overall Width (w/mower chute)	73.8" / 63"	85.8" / 75.2"
Overall Height (w/ROPS upright)	78.7"	
Front Tires	15 x 6.5-8 smooth semi-pneumatic	
Rear Tires	26 x 12.0-16 low-profile tire	
Brakes	Wet multi-disks, foot applied, released	
Weight (lbs.) (w/mower)	1,687 / 1,720	1,764 / 1,786

### MOWER DECK SPECIFICATIONS

	RCK60P-1200Z	RCK60RP-1200Z	RCK72P-1200Z	RCK72RP-1200Z
Mower Deck Type	Kubota ProDeck with ACS	Kubota ProDeck	Kubota ProDeck with ACS	Kubota ProDeck
Mower Lift System	Hydraulic			
Deck Depth	6.0"	5.5"	6.0"	5.5"
Cutting Height	1–5"			
Cutting Width	60"		72"	
Blade Tip Speed (fpm) (max.)	18,050	16,900	18,050	18,000

### ADDITIONAL IMPLEMENTS AND ACCESSORIES

	ZD1211-60 / ZD1211-60R	ZD1211L-72 / ZD1211RL-72R
“Catch All” Hopper-Style Grass Catcher	Optional	
“Catch All” 2-Bag Style Grass Catcher	Optional	
Karu Mulching Blade	Optional, 60" & 72"	
Hitch Kit	Optional	
Operator-Controlled Discharge Chute	Optional	
Work Light Kit	Optional	
Canopy Sunshade	Optional	

\* SAE J1995



## ZD1500 Series

ZD1511RL | ZD1511LF | ZD1511RFL

The ZD1511 stakes its place at the top of the line of Kubota's industry-leading diesel zero-turn mowers with the electronically controlled Kubota diesel engine and the Aerodynamic Cutting System to significantly enhance cutting performance.

- › The flexible discharge chute ensures superior scattering of clippings
- › Wider, thicker, and more durable blades contribute to optimized air flow
- › Compared to previous model ZD331, the ZD1511 features an enlarged flywheel that is responsible for an increase from 29.1 hp (21.7 kW) to 30.8 hp (23 kW)
- › The hydraulic transmission, a unique Kubota feature, ideally complements the V1505 Kubota diesel engine by transmitting engine power without loss, which contributes to a quick and smooth response
- › The 3.5" (88.9 mm) wide LCD Panel is the trade's largest and most comprehensive for models in this class
- › Two-pedal type hydraulic lift system enables the operator to easily and efficiently raise the mower deck when an obstacle is encountered
- › Operators never need to remove hands from levers to engage the parking brake through use of the conveniently located parking brake pedal
- › Two-pin type maintenance lift makes it simple and easy to efficiently lift the front portion of the mower deck to quickly deal with any situation as it is encountered—including needed maintenance



## ZD1500 Series

	ZD1511RL-60R	ZD1511LF-72 / ZD1511RLF-72R
Engine Type	Kubota liquid-cooled, diesel, 4-cylinder	
Engine Model	Kubota V1505-T-E4-ZD	
Horsepower (gross)*	30.8	
Displacement (cu. cm.)	1,498	
Transmission	2-HST w/gear reduction	
Fuel Capacity (gal.)	13.0	
Speed (mph) (forward/reverse)	0–10.6 / 0–5.3	
Overall Length	104.7"	
Overall Width (w/ mower chute)	63"	85.8" / 75.2"
Overall Height (w/ROPS upright)	78.7"	
Front Tires	15 x 6.5-8 smooth semi-pneumatic	
Rear Tires	26 x 12.0-16 low-profile tire	
Brakes	Wet multi-disks, foot applied, released	
Weight (lbs.) (w/ mower)	1,984	2,006 / 2,028

### MOWER DECK SPECIFICATIONS

	RCK60RP-1500Z	RCK72P-1500Z	RCK72RP-1500Z
Mower Deck Type	Kubota ProDeck	Kubota ProDeck with ACS	Kubota ProDeck
Mower Lift System	Hydraulic		
Deck Depth	5.5"	6.0"	5.5"
Cutting Height	1–5"		
Cutting Width	60"	72"	
Blade Tip Speed (fpm) (max.)	17,300	18,400	

### ADDITIONAL IMPLEMENTS AND ACCESSORIES

	RCK60RP-1500Z	RCK72P-1500Z	RCK72RP-1500Z
Mulch Kits	Optional		
Work Light Kit	Optional		
Canopy Sunshade	Optional		
Operator Controlled Discharge Chute (OCDC)	N/A	Optional	N/A
Karu Mulching Blade	Optional, 72"		

\* SAE J1995



## F Series

F2690E | F2690 | F3990

**The F Series sets a new standard for professional front-mount mowers with cleaner emissions and greater power, precision, and efficiency.**

- › Kubota diesel engines provide faster, more efficient job performance with high-torque rise that allows you to power through tall or wet grass
- › The F3990 offers the highest-ever horsepower among all Kubota front-mount mowers
- › 6" deep, side-discharge deck design lets tall grass stand up so it can be cut more efficiently with a cleaner appearance
- › Large operator's platform, deluxe high-back seat with four separate adjustments and operator levers, for maximum driving comfort and convenience
- › Hydrostatic power steering reduces operator fatigue and makes it easier to mow around trees and other obstacles
- › EPA compliance with Tier 4 emissions regulations, enhanced combustion efficiency, low vibration and noise levels, and reduced fuel costs



## F Series

	F2690E	F2690	F3990
Engine Type	Kubota liquid-cooled, diesel, 3-cylinder		Kubota liquid-cooled, diesel, 4-cylinder
Engine Model	Kubota D1105		Kubota V1505T-IDI+DPF
Horsepower (gross)*	24.8		36.9
Displacement (cu. cm.)	1,123		1,498
Transmission	Hydrostatic, 2-range		
Fuel Capacity (gal.)	16.1		
Speed (mph) (forward/reverse)	0–12 / 0–6.2	0–12.5 / 0–6.8	
Overall Length	96.5"		98.9"
Overall Width	48.8"	53.9"	
Overall Height	77.8"	78.1"	
Min. Ground Clearance	6.9"	7.3"	
Weight (lbs.)	1,594	1,606	1,716

### MOWER SPECIFICATIONS

	RCK60P-F39	RCK72P-F39	RCK60R-F36	RCK72R-F36
Mower Deck Type	Welded, side discharge		Welded, rear discharge	
Cutting Width	60"	72"	60"	72"
Cutting Height	1–5"			
Mower Deck Depth	6"		5.5"	

### ADDITIONAL IMPLEMENTS AND ACCESSORIES

	F2690E	F2690	F3990
Hard Cab Enclosure		Optional	
Cab Heater		Optional	
Grass Catcher 12-Bushel, Low-Dump Style		Optional	
Debris Blower		Optional	
60" Front Blade		Optional	
60" Rotary Sweeper		Optional	
Snow Blower		Optional	
Mulching Kit		Optional	

\* SAE J1995

## KUBOTA PARTS

Kubota Tractor Corporation (KTC) Parts operations provide customer parts support, parts, and manuals through Kubota's national dealer network. We support our dealers with four large warehouses located strategically throughout the United States and two super warehouses in Japan.

KTC Parts offers a full line of O.E.M. service and maintenance parts designed and engineered to original factory specifications to keep your Kubota equipment operating at peak performance.



## KUBOTA ORANGE PROTECTION PROGRAM®

The Kubota Orange Protection Program gives you the opportunity to extend your coverage, without interruption, by one or two years. You can purchase your warranty extension through your Kubota dealer any time before the expiration of the regular Kubota Limited Warranty.<sup>1</sup>

### BENEFITS AT A GLANCE

- › Extends Basic Limited Warranty Coverage
- › Protects your investment
- › Provides peace of mind
- › Reliability of genuine Kubota parts
- › Extends both the Basic and applicable Power Train coverage
- › Administered by Kubota Tractor Corporation
- › Sold and serviced by your Authorized Kubota Dealer
- › Financing available, if purchased at the same time as your tractor
- › No deductibles
- › Fully transferable – (Coverage stays with the machine)



**FOR MORE INFORMATION, VISIT YOUR LOCAL KUBOTA DEALER OR CALL 888-398-9782**

## KUBOTA CREDIT CORPORATION, U.S.A.

Since 1982, Kubota has extended a wide range of financing alternatives to customers through Kubota Credit Corporations, U.S.A. (KCC). KCC offers competitive interest rates, flexible down payments, monthly and seasonal payment terms, and a Kubota-sponsored property damage insurance program. Kubota dealers can tailor a variety of finance programs<sup>2</sup> to meet the specific requirements of their customers.

**FOR MORE INFORMATION, VISIT YOUR LOCAL KUBOTA DEALER OR [WWW.KUBOTACREDITUSA.COM](http://WWW.KUBOTACREDITUSA.COM)**

<sup>1</sup> - Orange Protection is available in Florida for Commercial Customers only.

<sup>2</sup> - Subject to credit approval through Kubota Credit Corporation, U.S.A.



## KTAC INSURANCE AGENCY

Created specifically for Kubota owners, KTAC Insurance is a Kubota-endorsed property damage insurance program providing “all risk” protection.

### BENEFITS AT A GLANCE

- › Coverage against flood, wind, infestation, upset and collision, falling objects, theft, fire, vandalism, and more
- › In-transit and off-property protection
- › Low \$250 deductible
- › Convenient payment options
- › Transportation reimbursement

KCC customers also receive original sales price protection (including taxes and fees)\* for the first 60 months of the finance agreement.

**FOR MORE INFORMATION, CONTACT A KTAC REPRESENTATIVE AT 800-348-5802 OR VISIT [WWW.KTACINSURANCEAGENCY.COM](http://WWW.KTACINSURANCEAGENCY.COM).**

\*This is a summary of the Kubota-Endorsed Property Damage Insurance Program. This information is descriptive only and is not intended to be a solicitation or an offer to sell any insurance product or service, nor is the information a complete description of all of the terms, conditions and exclusions applicable. Actual coverage is subject to the language of the policy issued. This policy is underwritten by Ohio Indemnity Company.

## KUBOTA LEASING

In this credit-tight economy, leasing is critical to getting the Kubota equipment your business needs to grow. With the new Kubota Leasing program, commercial customers have access to flexible leasing that makes the full Kubota product line more affordable.

### PROGRAM HIGHLIGHTS INCLUDE:

- › Affordable monthly payments
- › Fast, easy application process
- › Application only required up to \$150,000
- › Same-day credit decisions with complete information
  - › Transactions starting at \$3,000 and up
  - › 24-, 36-, 48- or 60-month terms
- › Flexible structures to match your cash flow and budget



Kubota Tractor Corporation reserves the right to change the stated specifications without notice. This brochure is for descriptive purposes only and reasonable efforts were used to set forth the contained information; some items shown may be optional and some products shown may not be available at all dealerships. Kubota disclaims all representations and warranties, express or implied, or any liability from the use of this brochure. For complete warranty, safety and product information, consult your local Kubota dealer and the operator's manual. Power (HP/KW) and other specifications are based on various standards or recommended practices. For your safety, Kubota strongly recommends the use of a Rollover Protective Structure (ROPS) and seat belt in almost all applications. This brochure is intended for the United States and US territories only. For information regarding Kubota products or services outside these areas, see Kubota Corporation's global web site. Kubota does not provide parts, warranty or service for any Product which is re-sold or retailed in any country other than the country for which the Product(s) were designed or manufactured.









**KUBOTA TRACTOR CORPORATION**

1000 Kubota Drive  
Grapevine, TX 76051  
KubotaUSA.com

